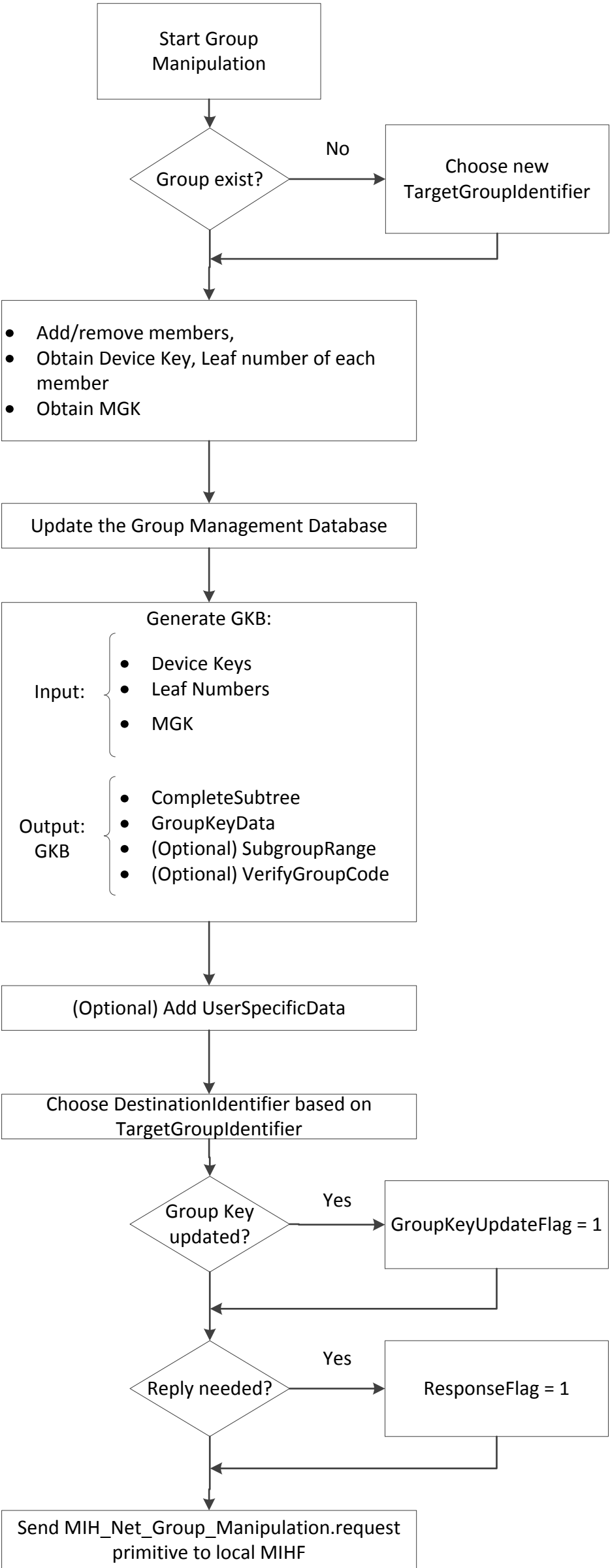


MIHF Sending MIH_Net_Group_Manipulate message | MIHF Receiving MIH_Net_Group_Manipulate message



Receive MIH_Net_Group_Manipulation.request

Generate the following TLVs based on the MIH_Net_Group_Manipulation.request:

- Source MIHF ID TLV
- Destination MIHF ID TLV
- (Optional) SubgroupRange TLV
- (Optional) Verify Group Key TLV
- (Optional) Aux Data TLV
- Complete Subtree TLV
- Group Key Data TLV

MulticastAddress present?

Yes

Is the Multicast Address belonging to TargetIdentifier in the Multicast Address Database?

?

Yes

Generate Multicast Address TLV

Obtain Multicast Address associated to TargetIdentifier from external entity or mechanism (out of scope)

Update Multicast Address Database with Multicast Address and TargetIdentifier

Obtain MGK from GKB (CompleteSubtree and GroupKeyData) and Device Key, denote this MGK as MGK1

Obtain from Multicast Address Database the MGK2 and SAID of group, denote this MGK as MGK2

MGK1==MGK2

Generate new SAID; Update Multicast Address Database with new SAID and MGK

Yes

Generate Signature TLV

ResponseFlag=1?

Yes

Send MIH_Net_Group_Manipulate request

Send MIH_Net_Group_Manipulate indication

