

~~DRAFT Amendment to IEEE Standard for
Local and metropolitan area networks~~

Part 16: Air Interface for Broadband Wireless Access Systems

Amendment for Multi-tier Networks

Sponsor-

~~LAN/MAN Standards Committee
of the
IEEE Computer Society~~

and the

~~IEEE Microwave Theory and Techniques Society~~



Copyright © 2011 by the IEEE.
Three Park Avenue
New York, New York 10016-5997, USA
All rights reserved.

This document is an unapproved draft of a proposed IEEE Standard. As such, this document is subject to change. USE AT YOUR OWN RISK! Because this is an unapproved draft, this document must not be utilized for any conformance/compliance purposes. Permission is hereby granted for IEEE Standards Committee participants to reproduce this document for purposes of international standardization consideration. Prior to adoption of this document, in whole or in part, by another standards development organization permission must first be obtained from the IEEE Standards Activities Department (stds.ipr@ieee.org). Other entities seeking permission to reproduce this document, in whole or in part, must also obtain permission from the IEEE Standards Activities Department.

Introduction

This introduction is not part of IEEE Std 802.16q, IEEE Standard for Interface for Broadband Wireless Access Systems - Amendment: Enhancements to Support Multi-tier Networks.

This amendment specifies support for Multi-tier Networks. As of the publication date, the current applicable version of IEEE Std 802.16 is IEEE Std 802.16-2012, as amended by IEEE 802.16n-2013.

Notice to users

Laws and regulations

Users of these documents should consult all applicable laws and regulations. Compliance with the provisions of this standard does not imply compliance to any applicable regulatory requirements. Implementers of the standard are responsible for observing or referring to the applicable regulatory requirements. IEEE does not, by the publication of its standards, intend to urge action that is not in compliance with applicable laws, and these documents may not be construed as doing so.

Copyrights

This document is copyrighted by the IEEE. It is made available for a wide variety of both public and private uses. These include both use, by reference, in laws and regulations, and use in private self-regulation, standardization, and the promotion of engineering practices and methods. By making this document available for use and adoption by public authorities and private users, the IEEE does not waive any rights in copyright to this document.

Updating of IEEE documents

Users of IEEE standards should be aware that these documents may be superseded at any time by the issuance of new editions or may be amended from time to time through the issuance of amendments, corrigenda, or errata. An official IEEE document at any point in time consists of the current edition of the document together with any amendments, corrigenda, or errata then in effect. In order to determine whether a given document is the current edition and whether it has been amended through the issuance of amendments, corrigenda, or errata, visit the IEEE Standards Association website at <http://ieeexplore.ieee.org/xpl/standards.jsp>, or contact the IEEE at the address listed previously.

For more information about the IEEE Standards Association or the IEEE standards development process, visit the IEEE SA website at <http://standards.ieee.org>.

Errata

Errata, if any, for this and all other standards can be accessed at the following URL: <http://standards.ieee.org/reading/ieee/updates/errata/index.html>. Users are encouraged to check this URL for errata periodically.

Interpretations

Current interpretations can be accessed at the following URL: <http://standards.ieee.org/reading/ieee/interp/index.html>.

Patents

~~*The following notice shall appear when the IEEE receives assurance from a known patent holder or patent applicant prior to the time of publication that a license will be made available to all applicants either without compensation or under reasonable rates, terms, and conditions that are demonstrably free of any unfair discrimination.*~~

Attention is called to the possibility that implementation of this standard may require use of subject matter covered by patent rights. By publication of this standard, no position is taken with respect to the existence or validity of any patent rights in connection therewith. A patent holder or patent applicant has filed a statement of assurance that it will grant licenses under these rights without compensation or under reasonable rates, with reasonable terms and conditions that are demonstrably free of any unfair discrimination to applicants desiring to obtain such licenses. Other Essential Patent Claims may exist for which a statement of assurance has not been received. The IEEE is not responsible for identifying Essential Patent Claims for which a license may be required, for conducting inquiries into the legal validity or scope of Patents Claims, or determining whether any licensing terms or conditions are reasonable or non-discriminatory. Further information may be obtained from the IEEE Standards Association.

~~*If the IEEE has not received letters of assurance prior to the time of publication, the following notice shall appear:*~~

Attention is called to the possibility that implementation of this standard may require use of subject matter covered by patent rights. By publication of this standard, no position is taken with respect to the existence or validity of any patent rights in connection therewith. The IEEE shall not be responsible for identifying patents or patent applications for which a license may be required to implement an IEEE standard or for conducting inquiries into the legal validity or scope of those patents that are brought to its attention.

Participants

This document was developed by the IEEE 802.16 Working Group on Broadband Wireless Access, which develops the WirelessMAN® Standard for Wireless Metropolitan Area Networks.

Roger B. Marks, *Chair*

Harry Bims, *Vice-Chair*

Harry Bims, *Secretary*

Tim Godfrey, *Treasurer*

The following members of the IEEE 802.16 Working Group on Broadband Wireless Access participated in the Working Group Letter Ballot in which the draft of this standard was prepared and finalized for IEEE Ballot:

~~Yan Xiu Zheng~~

~~Lei Zhou~~

~~Jing Zhu~~

~~Hua Zhou~~

~~Chenxi Zhu~~

~~Peiyong Zhu~~

Primary development was carried out by the Working Group's 802.16q Task Group.

802.16q TG Leadership Team:

Harry Bims, Chair

TBD, Vice Chair

TBD, Secretary

TBD, Editor

The following members of the [individual/entity] balloting committee voted on this standard. Balloters may have voted for approval, disapproval, or abstention.

1 When the IEEE-SA Standards Board approved this standard on XX Month 2015, it had the following
2 membership:

- | | | | |
|----|--|-----------------------|------------------------|
| 3 | Robert M. Grow, <i>Chair</i> | | |
| 4 | Thomas Prevost, <i>Vice Chair</i> | | |
| 5 | Steve M. Mills, <i>Past Chair</i> | | |
| 6 | Judith Gorman, <i>Secretary</i> | | |
| 7 | | | |
| 8 | | | |
| 9 | Victor Berman | Jim Hughes | Chuck Powers |
| 10 | Richard DeBlasio | Richard H. Hulett | Narayanan Ramachandran |
| 11 | Andy Drozd | Young Kyun Kim | Jon Walter Rosdahl |
| 12 | Mark Epstein | Joseph L. Koepfinger* | Robby Robson |
| 13 | Alexander Gelman | John Kuliek | Anne-Marie Sahazizia |
| 14 | William R. Goldbach | David J. Law | Malcolm V. Thaden |
| 15 | Arnold M. Greenspan | Glenn Parsons | Howard L. Wolfman |
| 16 | Kenneth S. Hanus | Ronald C. Petersen | Don Wright |

17
18 *Member Emeritus
19

20
21 Also included are the following nonvoting IEEE-SA Standards Board liaisons:
22

- | | |
|----|---|
| 23 | |
| 24 | Satish K. Aggarwal, <i>NRC Representative</i> |
| 25 | Michael H. Kelly, <i>NIST Representative</i> |

| | |
|----|---|
| 26 | |
| 27 | |
| 28 | Your name here |
| 29 | <i>IEEE Standards Program Manager, Document Development</i> |

| | |
|----|--|
| 30 | |
| 31 | |
| 32 | Your name here |
| 33 | <i>IEEE Standards Program Manager, Technical Program Development</i> |

34
35
36
37
38
39
40
41
42
43
44
45
46
47
48
49
50
51
52
53
54
55
56
57
58
59
60
61
62
63
64
65

Contents

| | | |
|----|-----|--|
| 1 | | |
| 2 | | |
| 3 | | |
| 4 | 1. | Overview..... 2 |
| 5 | | |
| 6 | | 1.9 Support for Multi-tier Networks..... 2 |
| 7 | | |
| 8 | 2. | Normative references..... 3 |
| 9 | | |
| 10 | | |
| 11 | 3. | Definitions..... 4 |
| 12 | | |
| 13 | 4. | Abbreviations and acronyms..... 5 |
| 14 | | |
| 15 | | |
| 16 | 6. | MAC common part sublayer..... 6 |
| 17 | | |
| 18 | | 6.3.2 MAC PDU formats..... 6 |
| 19 | | 6.3.2.3 MAC management messages..... 6 |
| 20 | | 6.3.2.3.5RNG-REQ (ranging request) message..... 6 |
| 21 | | 6.3.2.3.6RNG-RSP (ranging response) message..... 6 |
| 22 | | 6.3.2.3.23SBC-REQ (SS and RS basic capability request) message..... 7 |
| 23 | | 6.3.2.3.24SBC-RSP (SS and RS basic capability response) message..... 7 |
| 24 | | 6.3.2.3.42MOB_NBR-ADV (neighbor advertisement) message..... 7 |
| 25 | | 6.3.2.3.43MOB_SCN-REQ (scanning interval allocation request) message.. 7 |
| 26 | | 6.3.2.3.44MOB_SCN-RSP (scanning interval allocation response) message. 7 |
| 27 | | 6.3.2.3.45MOB_SCN-REP (scanning result report) message..... 8 |
| 28 | | 6.3.2.3.103IM_CT-REQ (IM Multi-BS CT request) message..... 8 |
| 29 | | 6.3.2.3.104IM_CT-RSP (IM Multi-BS CT response) message..... 13 |
| 30 | | 6.3.2.3.105IM_CT-CH-REQ (IM Multi-BS CT PHY Channel Measurement |
| 31 | | Request) message 16 |
| 32 | | 6.3.2.3.106IM-CT-CH-RSP (IM Multi-BS CT PHY Channel Measurement |
| 33 | | Response) message 17 |
| 34 | | |
| 35 | | |
| 36 | | |
| 37 | | |
| 38 | 10. | Parameters and constants..... 18 |
| 39 | | |
| 40 | | |
| 41 | 11. | TLV encodings..... 19 |
| 42 | | |
| 43 | | 11.1 Common encodings..... 19 |
| 44 | | 11.1.19CSGID..... 19 |
| 45 | | 11.3 UCD management message encodings..... 19 |
| 46 | | 11.3.1 UCD channel encodings..... 19 |
| 47 | | 11.4.1 DCD management encodings..... 20 |
| 48 | | 11.8 SBC-REQ/RSP management message encodings..... 23 |
| 49 | | 11.8.25Multi-BS CT support..... 24 |
| 50 | | 11.18MOB_NBR-ADV management message encodings..... 24 |
| 51 | | 11.18.3Neighbor FA information..... 24 |
| 52 | | 11.19MOB_SCN-REP management message encodings..... 24 |
| 53 | | 11.19.3Neighbor request..... 24 |
| 54 | | 11.19.4Scanning result..... 25 |
| 55 | | 11.20MOB_SCN-REQ/RSP message encodings..... 26 |
| 56 | | 11.20.4Recommended small BS information..... 26 |
| 57 | | 11.33IM-CT-CH-REQ management encodings..... 27 |
| 58 | | 11.34IM-CT-CH-RSP management encodings..... 28 |
| 59 | | |
| 60 | | |
| 61 | | |
| 62 | | |
| 63 | | |
| 64 | 14. | Management interface and procedures..... 30 |
| 65 | | |

| | | |
|----|--|----|
| 1 | 14.1 Service primitive template | 30 |
| 2 | 14.1.1 Universal naming schema for SAP service primitive | 30 |
| 3 | 14.1.2 SAP service primitive object format..... | 31 |
| 4 | 14.1.2.1 M-SAP/C-SAP operation service primitive..... | 31 |
| 5 | 14.1.2.2 M-SAP/C-SAP notification service primitive | 32 |
| 6 | 14.1.3 SAP service primitive flow diagram template..... | 33 |
| 7 | 14.2 Management and control functions..... | 34 |
| 8 | 14.2.12BS power management | 34 |
| 9 | 14.2.12.1 M-BPM-REQ..... | 35 |
| 10 | 14.2.12.1.1M-BPM-REQ (Action_Type = Duty-cycle mode) | 36 |
| 11 | 14.2.12.1.2M-BPM-REQ (Action_Type = Standby mode)..... | 37 |
| 12 | 14.2.12.2 M-BPM-RSP | 38 |
| 13 | 14.2.12.2.1M-BPM-RSP (Action_Type = Duty-cycle mode) | 38 |
| 14 | 14.2.12.2.2M-BPM-RSP (Action_Type = Standby mode)..... | 39 |
| 15 | 14.2.13Interference management..... | 40 |
| 16 | 14.2.13.1 C-IM-REQ | 42 |
| 17 | 14.2.13.1.1C-IM-REQ (Action_Type = IM_RM_Configuration)..... | 42 |
| 18 | 14.2.13.1.2C-IM-REQ (Action_Type = IM_CT_Configuration)..... | 45 |
| 19 | 14.2.13.2 C-IM-RSP | 50 |
| 20 | 14.2.13.2.1C-IM-RSP (Action_Type = IM_RM_Configuration)..... | 50 |
| 21 | 14.2.13.2.2C-IM-RSP (Action_Type = IM_CT_Configuration)..... | 53 |
| 22 | 14.2.13.3 C-IM-IND | 56 |
| 23 | 14.2.13.3.1C-IM-IND (Event_Type = IM_RM_Report)..... | 56 |
| 24 | 14.2.13.3.2C-IM-IND (Event_Type = IM_CT_Report)..... | 59 |
| 25 | 14.2.13.3.3C-IM-IND (Event_Type = IM_CT_Indication) | 61 |
| 26 | 17. Support for Multi-tier Networks | 63 |
| 27 | 17.1 General..... | 63 |
| 28 | 17.1.1 Small BS subscription types | 63 |
| 29 | 17.1.2 small BS state diagram | 63 |
| 30 | 17.1.3 Closed subscription group identifier (CSG ID) | 64 |
| 31 | 17.1.3.1 CSG white list..... | 64 |
| 32 | 17.1.4 Small BS initialization and network exit | 65 |
| 33 | 17.1.4.1 Small BS initialization | 65 |
| 34 | 17.1.4.2 Small BS network exit | 65 |
| 35 | 17.1.5 Network synchronization | 65 |
| 36 | 17.1.6 Network entry | 65 |
| 37 | 17.1.6.1 MS network entry with small BS..... | 65 |
| 38 | 17.1.6.2 Small BS reselection by the MS | 65 |
| 39 | 17.2 Mobility management..... | 66 |
| 40 | 17.2.1 Handover (HO) | 66 |
| 41 | 17.2.1.1 Network topology acquisition..... | 66 |
| 42 | 17.2.1.1.1Network topology advertisement..... | 66 |
| 43 | 17.2.1.1.2MS scanning neighbor small BSs | 67 |
| 44 | 17.2.1.2 HO decision | 67 |
| 45 | 17.2.2 Idle mode | 67 |
| 46 | 17.3 Interference management..... | 68 |
| 47 | 17.3.1 Resource Management..... | 68 |
| 48 | 17.3.1.1 Fractional Frequency Reuse (FFR)..... | 68 |
| 49 | 17.3.1.1.1DL FFR | 68 |
| 50 | 17.3.1.1.2UL FFR | 69 |
| 51 | 17.3.1.2 Time-Division Multiplexed Resource Scheduling | 69 |
| 52 | 17.3.1.3 Trigger Conditions..... | 70 |
| 53 | | |
| 54 | | |
| 55 | | |
| 56 | | |
| 57 | | |
| 58 | | |
| 59 | | |
| 60 | | |
| 61 | | |
| 62 | | |
| 63 | | |
| 64 | | |
| 65 | | |

| | | |
|----|--|----|
| 1 | 17.3.2 Multi-BS cooperative transmission | 71 |
| 2 | 17.3.2.1 DL Multi-BS cooperative transmission | 71 |
| 3 | 17.3.2.1.1 Multi-BS CT decision and initiation | 72 |
| 4 | 17.3.2.1.2 Multi-BS CT set management | 73 |
| 5 | 17.3.2.1.3 Multi-BS CT Anchor BS management | 74 |
| 6 | 17.3.2.1.4 STC encoding/decoding for Multi-BS CT | 74 |
| 7 | 17.3.2.1.5 Multi-BS diversity | 74 |
| 8 | 17.3.2.1.6 DL single-BS precoding with multi-BS coordination | 75 |
| 9 | 17.3.2.1.7 DL multi-BS joint processing | 76 |
| 10 | 17.3.2.1.8 Channel feedback for closed-loop transmit precoding | 77 |
| 11 | 17.3.2.1.9 Channel quality measurement and report | 77 |
| 12 | 17.3.2.1.10 Trigger conditions | 78 |
| 13 | 17.3.2.2 UL Multi-BS MIMO | 79 |
| 14 | 17.3.2.2.1 UL multi-BS joint processing | 79 |
| 15 | 17.3.2.2.2 Trigger conditions | 80 |
| 16 | 17.4 BS power management | 80 |
| 17 | 17.4.1 General Description | 80 |
| 18 | 17.4.2 Duty-cycle Mode | 80 |
| 19 | 17.4.2.1 Duty-cycle pattern | 82 |
| 20 | 17.4.3 Standby Mode | 82 |
| 21 | 17.4.3.1 Standby mode initiation | 83 |
| 22 | 17.4.3.2 Standby mode termination | 83 |
| 23 | 17.4.4 Cooperation of Base Stations for Power Management | 83 |
| 24 | | |
| 25 | | |
| 26 | | |
| 27 | | |
| 28 | | |
| 29 | | |
| 30 | | |
| 31 | | |
| 32 | | |
| 33 | | |
| 34 | | |
| 35 | | |
| 36 | | |
| 37 | | |
| 38 | | |
| 39 | | |
| 40 | | |
| 41 | | |
| 42 | | |
| 43 | | |
| 44 | | |
| 45 | | |
| 46 | | |
| 47 | | |
| 48 | | |
| 49 | | |
| 50 | | |
| 51 | | |
| 52 | | |
| 53 | | |
| 54 | | |
| 55 | | |
| 56 | | |
| 57 | | |
| 58 | | |
| 59 | | |
| 60 | | |
| 61 | | |
| 62 | | |
| 63 | | |
| 64 | | |
| 65 | | |

List of Figures

1
2
3
4 Figure 14-1—SAP service primitive Flow Diagram template 34
5 Figure 14-49—Primitive flow for duty-cycled mode transition 34
6 Figure 14-50—Primitive flow for NCMS-initiated standby mode transition 35
7 Figure 14-51—Primitive flow for BS-initiated standby mode transition 35
8 Figure 14-52—Primitive flow of C-IM-REQ/RSP 41
9 Figure 14-53—Primitive flow between IEEE 802.16 entity (BS) and NCMS (IM_RM_Report/
10 IM_CT_Report) 41
11 Figure 14-54—Primitive flow between IEEE 802.16 entity (BS) and NCMS when C-IM-RSP message is re-
12 ceived 42
13
14 Figure 17-1—Functional overview of small BS states and operational modes 64
15 Figure 17-2—A logical block example of local STC encoding for Multi-BS CT at BS 74
16 Figure 17-3—Example of frame structure during duty-cycle mode operation 81
17 Figure 17-4—Example of operation in duty-cycle mode 82
18 Figure R-1—BS operation mode transition 84
19
20
21
22
23
24
25
26
27
28
29
30
31
32
33
34
35
36
37
38
39
40
41
42
43
44
45
46
47
48
49
50
51
52
53
54
55
56
57
58
59
60
61
62
63
64
65

List of Tables

| | | |
|----|--|----|
| 1 | | |
| 2 | | |
| 3 | | |
| 4 | Table 6-51—MAC management messages | 6 |
| 5 | Table 6-227am—IM_CT-REQ message format..... | 9 |
| 6 | Table 6-227an—IM_CT-RSP message format..... | 14 |
| 7 | Table 6-227ao—IM_CT-CH-REQ message format..... | 17 |
| 8 | Table 227ap—IM_CT-CH-RSP message format..... | 17 |
| 9 | | |
| 10 | Table 10-1—Parameters and constants..... | 18 |
| 11 | Table 11-1 —Type values for common TLV encodings..... | 19 |
| 12 | Table 11-15—UCD PHY-specific channel encodings - WirelessMAN-OFDMA..... | 19 |
| 13 | Table 11-19—DCD channel encodings..... | 21 |
| 14 | Table 11-22a—Complementary trigger TLV description | 23 |
| 15 | Table 11-35—SBC-REQ/RSP management message encodings (OFDMA PHY-specific)..... | 23 |
| 16 | | |
| 17 | Table 14-1—M-SAP/C-SAP Operation Types..... | 32 |
| 18 | Table 14-2—M-SAP/C-SAP Event Types | 33 |
| 19 | | |
| 20 | | |
| 21 | | |
| 22 | | |
| 23 | | |
| 24 | | |
| 25 | | |
| 26 | | |
| 27 | | |
| 28 | | |
| 29 | | |
| 30 | | |
| 31 | | |
| 32 | | |
| 33 | | |
| 34 | | |
| 35 | | |
| 36 | | |
| 37 | | |
| 38 | | |
| 39 | | |
| 40 | | |
| 41 | | |
| 42 | | |
| 43 | | |
| 44 | | |
| 45 | | |
| 46 | | |
| 47 | | |
| 48 | | |
| 49 | | |
| 50 | | |
| 51 | | |
| 52 | | |
| 53 | | |
| 54 | | |
| 55 | | |
| 56 | | |
| 57 | | |
| 58 | | |
| 59 | | |
| 60 | | |
| 61 | | |
| 62 | | |
| 63 | | |
| 64 | | |
| 65 | | |

6
7 **Air Interface for Broadband Wireless**
8 **Access Systems —**
9
10
11
12
13
14
15
16
17

18
19 **Enhancements to Support Multi-tier Networks**
20
21
22
23
24

25 NOTE-The editing instructions contained in this amendment define how to merge the material contained
26 herein into the existing base standard IEEE Std 802.16. The editing instructions are shown in ***bold italic***.
27 Four editing instructions are used: ***change***, ***delete***, ***insert***, and ***replace***. ***Change*** is used to make small correc-
28 tions in existing text or tables. The editing instruction specifies the location of the change and describes what
29 is being changed by using strike through (to remove old material) and underscore (to add new material).
30 ***Delete*** removes existing material. ***Insert*** adds new material without disturbing the existing material. Inser-
31 tions may require renumbering. If so, renumbering instructions are given in the editing instruction. ***Replace***
32 is used to make large changes in existing text, subclauses, tables, or figures by removing existing material
33 and replacing it with new material. Editorial notes will not be carried over into future editions because the
34 changes will be incorporated into the base standard.
35
36
37
38
39
40
41
42
43
44
45
46
47
48
49
50
51
52
53
54
55
56
57
58
59
60
61
62
63
64
65

1. Overview

Insert new subclause 1.9

1.9 Support for Multi-tier Networks

Multi-tier networks are an overlay deployments which consists of macro base stations and a variety of overlaid smaller base stations in order to further improve network capacity and efficiently manage radio resource. In multi-tier networks, coordination techniques between devices, between base stations across the multiple tiers, and between base stations in the same tier are important aspects of multi-tier network design to achieve system capacity enhancements and interference mitigation techniques across tiers are also critical to achieving the user throughput enhancements.

MAC/PHY protocol is enhanced throughout this standard to support efficient cooperation among base stations in multi-tier networks to enhance interference mitigation, mobility management, and base station power management. The management protocol between base stations and between base stations and mobile stations is improved to enable efficient cooperation and coordination. However, PHY layer of mobile stations has not been changed.

2. Normative references

1
2
3
4
5
6
7
8
9
10
11
12
13
14
15
16
17
18
19
20
21
22
23
24
25
26
27
28
29
30
31
32
33
34
35
36
37
38
39
40
41
42
43
44
45
46
47
48
49
50
51
52
53
54
55
56
57
58
59
60
61
62
63
64
65

1 **3. Definitions**

2
3 *Insert the following definitions in alphabetical order:*

4
5
6 **BS power controller:** BS power controller is a network element that performs BS power management ser-
7 vices in the NCMS.
8
9

10
11
12
13
14
15
16
17
18
19
20
21
22
23
24
25
26
27
28
29
30
31
32
33
34
35
36
37
38
39
40
41
42
43
44
45
46
47
48
49
50
51
52
53
54
55
56
57
58
59
60
61
62
63
64
65

1 **4. Abbreviations and acronyms**
2

3 *Insert the following abbreviations in alphabetical order:*
4

5
6 ASN access service network
7

8 CSG closed subscriber group
9

10 CT cooperative transmission
11

12 IM interference management
13

14 OSG open subscriber group
15

16 SOHO small office/home office
17
18
19
20
21
22
23
24
25
26
27
28
29
30
31
32
33
34
35
36
37
38
39
40
41
42
43
44
45
46
47
48
49
50
51
52
53
54
55
56
57
58
59
60
61
62
63
64
65

6. MAC common part sublayer

6.3.2 MAC PDU formats

6.3.2.3 MAC management messages

Change the contents in Table 6-51 as indicated:

Table 6-51—MAC management messages

| Type | Message name | Message description | Connection |
|-------------------------------|---------------------|--|--------------|
| <u>144</u> | <u>IM_CT-REQ</u> | <u>IM Multi-BS CT Request</u> | <u>Basic</u> |
| <u>145</u> | <u>IM_CT-RSP</u> | <u>IM Multi-BS CT Response</u> | <u>Basic</u> |
| <u>146</u> | <u>IM_CT-CH-REQ</u> | <u>IM Multi-BS CT PHY Channel Measurement Request</u> | <u>Basic</u> |
| <u>147</u> | <u>IM_CT-CH-RSP</u> | <u>IM Multi-BS CT PHY Channel Measurement Response</u> | <u>Basic</u> |
| 140 <u>148-255</u> | | <i>Reserved</i> | |

6.3.2.3.5 RNG-REQ (ranging request) message

Insert the following texts at the end of 6.3.2.3.5 as indicated:

The following TLV may be included in the RNG-REQ message when the MS is attempting to perform initial network entry.

CSGID

CSGID is a common identifier used to identify the BSs belonging to the same CSG. (see 17.1.3)

6.3.2.3.6 RNG-RSP (ranging response) message

Insert the following texts at the end of 6.3.2.3.6 as indicated:

The following TLV may be included in the RNG-RSP message for the BS to redirect MS to neighbor BSs during network (re)entry.

CSGID

CSGID is a common identifier used to identify the BSs belonging to the same CSG. (see 17.1.3)

1 **6.3.2.3.23 SBC-REQ (SS and RS basic capability request) message**

2
3 *Insert the following text at the end of 6.3.2.3.23:*

4
5
6 The following parameter may be included if the MS supports the capability to support the Multi-BS CT.

7
8 **Multi-BS CT support (11.8.25)**

9
10
11 **6.3.2.3.24 SBC-RSP (SS and RS basic capability response) message**

12
13 *Insert the following text at the end of 6.3.2.3.24:*

14
15 The following parameter may be included in SBC-RSP.

16
17 **Multi-BS CT support (11.8.25)**

18
19
20 **6.3.2.3.42 MOB_NBR-ADV (neighbor advertisement) message**

21
22 *Insert the following texts at the end of 6.3.2.3.42*

23
24 The MOB_NBR-ADV message may include the following TLV.

25
26
27 **Neighbor FA information**

28
29 This TLV is used to provide the information required for the MS to scan neighbor small BSs
30 deployed on a different frequency.

31
32
33
34 **6.3.2.3.43 MOB_SCN-REQ (scanning interval allocation request) message**

35
36 *Insert the following texts at the end of 6.3.2.3.43 as indicated:*

37
38 The following TLV may be included in the MOB_SCN-REQ message to indicate CSGID of BSs to be
39 scanned.

40
41
42 **CSGID**

43
44 CSGID is a common identifier used to identify the BSs belonging to the same CSG. (see 17.1.3)

45
46 The following TLVs may be included in the MOB_SCN-REQ message to indicate neighbor small BSs of
47 which BSIDs are not defined in the MOB_NBR-ADV message or not shared with the serving BS.

48
49
50 **Recommended small BS information**

51
52 Information of the recommended small BS that the MS plans to scan. (see 11.20.4)

53
54
55
56
57
58 **6.3.2.3.44 MOB_SCN-RSP (scanning interval allocation response) message**

59
60 *Insert the following texts at the end of 6.3.2.3.44 as indicated:*

61
62 The following TLV may be included in the MOB_SCN-RSP message to indicate CSGID of BSs to be
63 scanned.

CSGID

CSGID is a common identifier used to identify the BSs belonging to the same CSG. (see 17.1.3)

The following TLVs may be included in the MOB_SCN-RSP message to indicate the neighbor small BSs of which BSIDs are not defined in the MOB_NBR-ADV message or not shared with the MS. If Recommended BSIDs of which BSIDs are not included in the MOB_NBR-ADV message or not shared with the MS is included in the MOB_SCN-RSP message, the following TLVs shall be included in the MOB_SCN-RSP message to provide further information of the neighbor small BSs.

Recommended small BS information

Information of the recommended small BS to be scanned. (see 11.20.4)

6.3.2.3.45 MOB_SCN-REP (scanning result report) message

Insert the following texts at the end of 6.3.2.3.45

The MOB_SCN-REP message may include the following TLV.

Neighbor request

This TLV is included in the MOB_SCN-REP to request a serving BS to unicast MOB_NBR-ADV message that contains system information of the neighbor BSs indicated by this TLV.

The following TLVs may be included in the MOB_SCN-REP message to indicate neighbor small BSs reported in this message and of which BSIDs are not shared with the serving BS.

Scanning result

Information of the scanning measurement of the recommended BS to be scanned. (see 11.19.4)

Insert the following new subclauses in 6.3.2.3

6.3.2.3.103 IM_CT-REQ (IM Multi-BS CT request) message

An MS capable of Multi-BS CT transmits an IM_CT-REQ message to the serving BS to request the serving BS to modify the Multi-BS CT candidate set by adding or deleting neighbor BS(s). Alternatively, an MS capable of Multi-BS CT transmits an IM_CT-REQ message to the serving BS to request the serving BS to trigger Multi-BS CT operation. A MS capable of Multi-BS CT may request a trigger for Multi-BS CT operation and add/delete neighbor BS(s) in the same IM_CT-REQ message.

The format of the message is shown in Table 6-227am.

Table 6-227am—IM_CT-REQ message format

| Syntax | Size (bit) | Notes |
|--|------------|---|
| IM_CT-REQ_Message_Format() { | - | - |
| Management Message Type = 144 | 8 | - |
| Action Type | 8 | Used to indicate the purpose of this message. Bit 0: Request to add the neighbor BS(s) to Multi-BS CT candidate set Bit 1: Request to delete the neighbor BS(s) from Multi-BS CT candidate set Bit 2: Request to update anchor BS Bit 3: Request to trigger Multi-BS CT Bit 4-7: <i>Reserved</i> |
| Report metric | 8 | Bitmap indicating presence of certain metrics (threshold values) on which the corresponding triggers are based: Bit 0: BS CINR mean Bit 1: BS RSSI mean Bit 2: Relative delay Bit 3-7: <i>Reserved</i> ; shall be set to zero |
| if(Action Type[Bit 0] == 1 Action Type[Bit 3] == 1) { | - | - |
| N_Neighbor_BS_Index | 8 | Number of neighbor BSs that are included in MOB_NBR-ADV message. |
| if(N_Neighbor_BS_Index != 0) { | - | - |
| Configuration change code for MOB_NBR-ADV | 8 | Configuration Change Count value of referring MOB_NBR-ADV message. |
| } | - | - |
| for(i=0; i<N_Neighbor_BS_Index; i++) { | - | - |
| Neighbor_BS_Index | 8 | BS index corresponds to position in MOB_NBR-ADV message. |
| if(Report metric[Bit 0] == 1) | - | - |
| BS CINR mean | 8 | - |

Table 6-227am—IM_CT-REQ message format

| Syntax | Size (bit) | Notes |
|--|------------|---|
| if(Report metric[Bit 1] == 1) | - | - |
| BS RSSI mean | 8 | - |
| if(Report metric[Bit 2] == 1) | - | - |
| Relative delay | 8 | - |
| } | - | - |
| N_Neighbor_BS_Full | 8 | Number of neighbor BSs that are using full 48bits BSID. |
| for($i=0; i < N_Neighbor_BS_Full; i++$) { | - | - |
| Neighbor BSID | 48 | - |
| if(Report metric[Bit 0] == 1) | - | - |
| BS CINR mean | 8 | - |
| if(Report metric[Bit 1] == 1) | - | - |
| BS RSSI mean | 8 | - |
| if(Report metric[Bit 2] == 1) | - | - |
| Relative delay | 8 | - |
| } | - | - |
| N_Temp_BSID | 4 | Number of BSs in the Multi-BS CT candidate set. |
| <i>Reserved</i> | 4 | Shall be set to zero. |
| for($i=0; i < N_Temp_BSID; i++$) { | - | - |
| Temp BSID | 4 | Member ID of the Multi-BS CT candidate set. |
| <i>Reserved</i> | 4 | Shall be set to zero. |
| if(Report metric[Bit 0] == 1) | - | - |
| BS CINR mean | 8 | - |
| if(Report metric[Bit 1] == 1) | - | - |
| BS RSSI mean | 8 | - |
| if(Report metric[Bit 2] == 1) | - | - |
| Relative delay | 8 | - |
| } | - | - |
| } | - | - |
| if(Action Type[Bit 1] == 1) { | - | - |

Table 6-227am—IM_CT-REQ message format

| Syntax | Size (bit) | Notes |
|--|------------|---|
| N_Temp_BSID | 4 | Number of BSs in the Multi-BS CT candidate set. |
| <i>Reserved</i> | 4 | Shall be set to zero. |
| for($i=0; i < N_Temp_BSID; i++$) { | - | - |
| Temp BSID | 4 | Member ID of the Multi-BS CT candidate set. |
| <i>Reserved</i> | 4 | Shall be set to zero. |
| if(Report metric[Bit 0] == 1) | - | - |
| BS CINR mean | 8 | - |
| if(Report metric[Bit 1] == 1) | - | - |
| BS RSSI mean | 8 | - |
| if(Report metric[Bit 2] == 1) | - | - |
| Relative delay | 8 | - |
| } | - | - |
| } | - | - |
| if(Action Type[Bit 2] == 1) { | - | - |
| Temp BSID | 4 | Member ID of the Multi-BS CT candidate set. |
| <i>Reserved</i> | 4 | Shall be set to zero. |
| } | - | - |
| if (Action Type[Bit 3] == 1) { | - | - |
| if (Report metric[Bit 0] == 1) | - | - |
| BS CINR mean | 8 | - |
| if (Report metric[Bit 1] == 1) | - | - |
| BS RSSI mean | 8 | - |
| if (Report metric[Bit 2] == 1) | - | - |
| Relative delay | 8 | - |
| } | | |
| } | | |

The following parameter shall be included if action type [Bit 0], [Bit 1], or [Bit 3] is set to “1”.

Report metric

1 Bitmap indicator of trigger metrics that the serving BS requests the MS to report. The serving BS
2 shall indicate only the trigger metrics agreed during SBC-REQ/RSP negotiation. For each bit loca-
3 tion, a value of 0 indicates the trigger metric is not included, while a value of '1' indicates the trig-
4 ger metric is included in the message. The bitmap interpretation for the metrics shall be as follows:
5

6
7 Bit 0: BS CINR mean

8
9 Bit 1: BS RSSI mean

10
11 Bit 2: Relative delay

12
13 Bits 3–7: *Reserved* ; shall be set to zero

14
15
16
17 **N_Neighbor_BS_Index**

18
19 Number of neighboring BS reported in this message and which are included in MOB_NBR-ADV
20 message.

21
22
23 **N_Neighbor_BS_Full**

24
25 Number of neighboring BS reported in this message that are using full 48 bits BSID.

26
27 **N_Temp_BSID**

28
29 Number of BSs currently in the Multi-BS CT candidate set;

30
31
32 **Configuration Change Count for MOB_NBR-ADV**

33
34 The value of Configuration Change Count in MOB_NBR-ADV message referred in order to com-
35 press neighbor BSID.

36
37
38 **Neighbor_BS_Index**

39
40 BS index corresponds to position of BS in MOB_NBR-ADV message.

41
42
43 **Neighbor BSID**

44
45 Same as the Base Station ID parameter in the DL-MAP message of neighbor BS.

46
47
48
49 According to the report metric that MS indicates, the following parameter may be included if action type is
50 set to 0b00 and 0b01:

51
52 **BS CINR mean**

53 The BS CINR Mean parameter indicates the CINR measured by the MS from the particular BS.
54 The value shall be interpreted as a signed byte with units of 0.5 dB. The measurement shall be
55 performed on the subcarriers of the frame preamble that are active in the particular BS's segment
56 and averaged over the measurement period.

57
58
59 **BS RSSI mean**

60 The BS RSSI Mean parameter indicates the Received Signal Strength measured by the MS from
61 the particular BS. The value shall be interpreted as an unsigned byte with units of 0.25 dB, e.g.,
62 0x00 is interpreted as -103.75 dBm. An MS shall be able to report values in the range -103.75
63 dBm to -40 dBm. The measurement shall be performed on the frame preamble and averaged over
64
65

1 the measurement period.

2
3 **Relative delay**

4 This parameter indicates the delay of neighbor DL signals relative to the serving BS, as measured
5 by the MS for the particular BS. The value shall be interpreted as a signed integer in units of
6 samples.
7

8
9
10 The following parameter shall be included if action type[Bit 0], [Bit 1], or [Bit 2] is set to “1”:
11

12 **Temp BSID**

13
14 Member ID of Multi-BS candidate set assigned to this BS.
15

16
17 **6.3.2.3.104 IM_CT-RSP (IM Multi-BS CT response) message**
18

19 In response to the IM_CT-REQ, a BS transmits to request neighbor BS(s) to update Multi-BS CT candidate
20 set and anchor BS. In addition, a BS transmits an IM_CT-RSP message to the MS after receiving from the
21 MS a request to trigger the Multi-BS CT operation.
22

23
24 The format of the message is shown in Table 6-227an.
25
26
27
28
29
30
31
32
33
34
35
36
37
38
39
40
41
42
43
44
45
46
47
48
49
50
51
52
53
54
55
56
57
58
59
60
61
62
63
64
65

Table 6-227an—IM_CT-RSP message format

| Syntax | Size (bit) | Notes |
|---|------------|---|
| IM_CT-RSP_Message_Format() { | - | - |
| Management Message Type = 145 | 8 | - |
| Action Type | 8 | Used to indicate the purpose of this message. Bit 0: Anchor BS update Bit 1: Multi-BS CT candidate set update Bit 2: CID update during anchor BS update or Multi-BS CT candidate set update Bit 3: Temp BS ID update Bit 4: Trigger response Bit 5-7: <i>Reserved</i> |
| if(Action Type[Bit 0] == 1) { | - | - |
| TEMP_BSID_Anchor | 4 | Temp BSID for the new anchor BS |
| } | - | - |
| if(Action Type[Bit 1] == 1) { | - | - |
| N_New_Temp_BSID | 4 | Number of new BSs to add in the Multi-BS CT candidate set. |
| <i>Reserved</i> | 4 | Shall be set to zero. |
| for($i=0; i < N_New_Temp_BSID; i++$) { | | |
| Neighbor BSID | 48 | - |
| Temp BSID | 4 | Member ID of the Multi-BS CT candidate set. |
| <i>Reserved</i> | 4 | Shall be set to zero. |
| } | - | - |
| N_Temp_BSID | 4 | Number of BSs which are the member of new Multi-BS CT candidate set. |
| <i>Reserved</i> | 4 | Shall be set to zero. |
| for($i=0; i < N_Temp_BSID; i++$) { | - | - |
| Temp BSID | 4 | Member ID of the Multi-BS candidate set. |
| <i>Reserved</i> | 4 | Shall be set to zero |

Table 6-227an—IM_CT-RSP message format

| Syntax | Size (bit) | Notes |
|--|------------|---|
| } | - | - |
| } | - | - |
| if(Action Type[Bit 2] == 1) { | - | - |
| N_CID_Add | 4 | Number of CIDs to add. |
| N_CID_Update | 4 | Number of CIDs to update. |
| N_CID_Delete | 4 | Number of CIDs to delete. |
| Reserved | 4 | Shall be set to zero. |
| for($i=0; i < N_CID_Add; i++$) { | - | - |
| New_CID_Add | 16 | New CID to use in the Multi-BS CT. |
| } | - | - |
| for($i=0; i < N_CID_Update; i++$) { | - | - |
| Current_CID_Update | 16 | Current CID to delete in the Multi-BS CT. |
| New_CID_Update | 16 | New CID to add in the Multi-BS CT. |
| } | - | - |
| for($i=0; i < N_CID_Delete; i++$) { | - | - |
| Current_CID_Delete | 16 | Current CID to delete from the Multi-BS CT. |
| } | - | - |
| } | - | - |
| if(Action Type[Bit 3] == 1) { | - | - |
| N_Temp_BSID_Update | 4 | Number of Temp BSID to update |
| for($i=0; i < N_Temp_BSID_Update; i++$) { | - | - |
| Current_Temp_BSID_Update | 16 | Current Temp BSID to delete in the Multi-BS CT. |
| New_Temp_BSID_Update | 16 | New Temp BSID to add in the Multi-BS CT. |
| } | - | - |
| } | - | - |

The following parameters shall be included if action type[Bit 0] is set to “1”.

TEMP_BSID_Anchor

New anchor BS Member ID of Multi-BS candidate set to update.

The following parameter shall be included if action type[Bit 1] is set to “1”:

N_New_Temp_BSID

Number of new BSs to add in the Multi-BS CT candidate set.

Neighbor BS ID

Same as the Base Station ID parameter in the DL-MAP message of neighbor BS.

Temp BS ID

Member ID of Multi-BS candidate set assigned to the BS.

The following parameter shall be included if action type[Bit 2] is set to “1”:

N_CID_Add

Number of CID to add.

N_CID_Update

Number of CID to update.

N_CID_Delete

Number of CID to delete.

New_CID_Add

New CID to use in the Multi-BS CT.

Current_CID_Update

Current CID to update in the Multi-BS CT.

Current_CID_Delete

Current CID to delete in the Multi-BS CT.

The following parameter shall be included if action type[Bit 3] is set to “1”:

N_Temp_BSID_Update

Number of Temp BSID to update.

Current_Temp_BSID_Update

Current Temp BSID to delete in the Multi-BS CT.

New_Temp_BSID_Update

New Temp BSID to add in the Multi-BS CT.

Insert the following new subclauses in 6.3.2.3

6.3.2.3.105 IM_CT-CH-REQ (IM Multi-BS CT PHY Channel Measurement Request) message

The BS may send the IM Multi-BS CT PHY Channel Measurement Request (IM_CT-CH-REQ) message to obtain measurement report for Multi-BS CT operation. To obtain measurement report for Multi-BS CT operation the IM_CT-CH-REQ message includes Cell ID and/or location to measure in unit of symbol offset. In addition, feedback type as well as the recommended and/or restricted feedback information may be included in the IM_CT-CH-REQ message.

1 Table 6-227ao shows the IM Multi-BS CT PHY Channel Measurement Request (IM_CT-CH-REQ) mes-
 2 sage.
 3
 4
 5
 6
 7

8 **Table 6-227ao—IM_CT-CH-REQ message format**
 9

| Syntax | Size (bit) | Notes |
|--------------------------------------|-----------------|-------|
| IM_CT-CH-REQ_Message_Format () { | - | - |
| Management Message Type = 146 | 8 | - |
| IM CT CH Report Request TVLs | <i>variable</i> | - |
| } | | |

10
 11
 12
 13
 14
 15
 16
 17
 18
 19
 20
 21
 22
 23 The IM Multi-BS CT PHY Channel Measurement Request (IM_CT-CH-REQ) message shall contain the
 24 following TLV encoded parameters:
 25
 26

27 **IM CT CH Report Request**
 28
 29
 30
 31

32 **6.3.2.3.106 IM-CT-CH-RSP (IM Multi-BS CT PHY Channel Measurement Response) message**
 33
 34

35 The IM Multi-BS CT PHY Channel Measurement Response (IM_CT-CH-RSP) message shall be used by
 36 the MS to respond to the channel measurements listed in the received IM Multi-BS CT PHY Channel Mea-
 37 surement Request (IM_CT-CH-REQ) message. Table 6-227ap shows the IM Multi-BS CT PHY Channel
 38 Measurement Response (IM_CT-CH-RSP) message.
 39
 40
 41

42 **Table 227ap—IM_CT-CH-RSP message format**
 43

| Syntax | Size (bit) | Notes |
|--------------------------------------|-----------------|-------|
| IM_CT-CH-RSP_Message_Format () { | - | - |
| Management Message Type = 147 | 8 | - |
| IM CT CH Report Response TLVs | <i>variable</i> | - |
| } | | |

44
 45
 46
 47
 48
 49
 50
 51
 52
 53
 54
 55
 56
 57 The IM Multi-BS CT PHY Channel Measurement Response (IM_CT-CH-RSP) message shall contain the
 58 following TLV encoded parameters:
 59
 60

61 **IM CT CH Report**
 62

63 Compound TLV that shall contain the measurement Report in accordance with the Report Request
 64 (see 11.34)
 65

1 **10. Parameters and constants**
 2
 3
 4

5 *Insert the following rows at the end of Table 10-1 as indicated:*
 6
 7
 8
 9

10 **Table 10-1—Parameters and constants**
 11

| System | Name | Time reference | Minimum value | Default value | Maximum value |
|--------|---------------------------|---|---------------|---------------|---------------|
| BS | Standby_Mode_Activation | The BS enters standby mode at the expiration of Standby_Mode_Activation timer | 30 min | - | - |
| BS | Standby_Mode_Deactivation | The BS terminates standby mode at the expiration of Standby_Mode_Deactivation | 30 min | - | - |

12
13
14
15
16
17
18
19
20
21
22
23
24
25
26
27
28
29
30
31
32
33
34
35
36
37
38
39
40
41
42
43
44
45
46
47
48
49
50
51
52
53
54
55
56
57
58
59
60
61
62
63
64
65

11. TLV encodings

11.1 Common encodings

Insert the following row at the end of Table 11-1 as indicated:

Table 11-1 —Type values for common TLV encodings

| Type | Name |
|------|-------|
| 115 | CSGID |

Insert the following new subclause 11.1.19 as indicated:

11.1.19 CSGID

This TLV specifies the CSG to which the BSs belong.

| Type | Length | Value | Scope |
|------|---------------------|---|---|
| 115 | <i>Variable (N)</i> | 0 to 256^N-1 , where N is [1,3] inclusive | DCD RNG-REQ RNG-RSP MOB_SCN-REQ MOB_SCN-RSP |

11.3 UCD management message encodings

11.3.1 UCD channel encodings

Insert the following parameter at the end of Table 11-15 as indicated:

Table 11-15—UCD PHY-specific channel encodings - WirelessMAN-OFDMA

| Name | Type (1 byte) | Length | Value |
|----------|---------------|--------|---|
| Cell bar | 225 | 1 | 0: this cell is allowed for network entry or reentry. |
| | | | 1: this cell is not allowed for network entry or reentry. |

1 **11.4.1 DCD management encodings**

2
3
4
5
6
7
8
9
10
11
12
13
14
15
16
17
18
19
20
21
22
23
24
25
26
27
28
29
30
31
32
33
34
35
36
37
38
39
40
41
42
43
44
45
46
47
48
49
50
51
52
53
54
55
56
57
58
59
60
61
62
63
64
65

Insert the following rows at the end of Table 11-19

Table 11-19—DCD channel encodings

| Name | Type (1byte) | Length | Value (variable length) | PHY scope |
|-----------------------|--------------|----------|---|-----------|
| CT_Add Threshold | 230 | 1 | Threshold used by the MS to add a neighbor BS to the Multi-BS CT candidate set. When the CINR of a neighbor BS is higher than CT_Add, the MS should send IM_CT-REQ to request adding this neighbor BS to the Multi-BS CT candidate set. This threshold is used for Multi-BS CT operation. It is in the unit of decibels. If the BS does not support Multi-BS CT, this value is not set. | OFDMA |
| CT_Delete Threshold | 231 | 1 | Threshold used by the MS to drop a BS from the Multi-BS CT candidate set. When the CINR of a BS is lower than CT_Delete, the MS should send IM_CT-REQ to request dropping this BS from the Multi-BS CT candidate set. This threshold is used for Multi-BS CT operation. It is in the unit of decibels. If the BS does not support Multi-BS CT, this value is not set. | OFDMA |
| Complementary trigger | 232 | variable | The Complementary trigger is a compound TLV value that indicates trigger metrics. The trigger in this encoding is defined for serving BS or commonly applied to a set of neighbor BSs. | OFDMA |
| CT_CINR_Th0 | 233 | 1 | Threshold used by the MS to generate a report of the physical channel quality of the serving BS. When CINR of the serving BS is lower than CT_CINR_Th0, the MS should send IM_CT-REQ message to request a trigger of the multi-BS CT operation, including CINR of the serving BS. It is in the unit of dB. If the BS does not support Multi-BS CT, this TLV is not present. | OFDMA |
| CT_RSSI_Th0 | 234 | 1 | Threshold used by the MS to generate a report of the physical channel quality of the serving BS. When RSSI of the serving BS is lower than CT_RSSI_Th0, the MS should send IM_CT-REQ message to request a trigger of the multi-BS CT operation, including RSSI of the serving BS. It is in the unit of dBm. If the BS does not support Multi-BS CT, this TLV is not present. | OFDMA |

Table 11-19—DCD channel encodings

| Name | Type (1byte) | Length | Value (variable length) | PHY scope |
|-------------|--------------|--------|--|-----------|
| CT_CINR_Th1 | 235 | 1 | Threshold used by the MS to generate a report the physical channel quality of a neighbor BS in the Multi-BS CT candidate set. When the CINR of a neighbor BS is higher than CT_CINR_Th1, the MS should send IM_CT-REQ, including BSID (or Temp BSID) and CINR of the N-BS. This threshold is used for Multi-BS CT operation. It is in the unit of dB. If the BS does not support Multi-BS CT, this TLV is not present. | OFDMA |
| CT_RSSI_Th1 | 236 | 1 | Threshold used by the MS to generate a report of the physical channel quality of a neighbor BS in the Multi-BS CT candidate set. When the RSSI of a neighbor BS is higher than CT_RSSI_Th1, the MS should send IM_CT-REQ, including BSID (or Temp BSID) and RSSI of the N-BS. This threshold is used for Multi-BS CT operation. It is in the unit of dBm. If the BS does not support Multi-BS CT, this TLV is not present. | OFDMA |
| CT_CINR_Th2 | 237 | 1 | Threshold used by the MS to generate a report of the physical channel quality of the serving BS. When CINR of the serving BS is higher than CT_CINR_Th2, the MS should send IM_CT-REQ message to request a trigger of the multi-BS CT operation, including CINR of the serving BS. It is in the unit of dB. If the BS does not support Multi-BS CT, this TLV is not present. | OFDMA |
| CT_RSSI_Th2 | 238 | 1 | Threshold used by the MS to generate a report of the physical channel quality of a neighbor BS in the Multi-BS CT candidate set. When the RSSI of a neighbor BS is higher than CT_RSSI_Th2, the MS should send IM_CT-REQ, including BSID (or Temp BSID) and RSSI of the N-BS. This threshold is used for Multi-BS CT operation. It is in the unit of dBm. If the BS does not support Multi-BS CT, this TLV is not present. | OFDMA |

Insert the following texts at the end of subclause 11.4.1 as indicated:

The Complementary trigger TLV (type 234) in Table 11-19 is encoded using the description in Table 11-22a.

Table 11-22a—Complementary trigger TLV description

| Name | Type | Length (1 byte) | Value |
|----------------------------|-------|-----------------|---|
| Cell type | 234.1 | 1 | See Table 11-19 for description |
| MS moving speed | 234.2 | 1 | MS moving speed 0x00: low (0-10 km/h) 0x01: medium (10-120 km/h) 0x02: high (above 120 km/h) 0x03~0xFF: <i>Reserved</i> |
| Type/Function/Action | 234.3 | 1 | See Table 11-21 for description |
| Trigger value | 234.4 | 1 | Trigger value is the Value used in comparing measured metric for determining a trigger condition |
| Trigger averaging duration | 234.5 | 1 | Trigger averaging duration in the time measured in number of frames over which the metric measurements are averaged |

The Type/function/action byte field of the Complementary trigger TLV description in Table 11-22a is described in Table 11-21. If the Complementary trigger TLVs are included in the DCD message, the MS may ignore Trigger TLVs having a metric that the MS and BS have not agreed to support during SBC-REQ/RSP message exchange.

11.8 SBC-REQ/RSP management message encodings

Insert the following rows at the end of table 11-35 in 11.8

Table 11-35—SBC-REQ/RSP management message encodings (OFDMA PHY-specific)

| Type | Parameter | Type | Parameter |
|------|-----------|------|---------------------|
| - | - | 227 | Multi-BS CT Support |

1 *Insert the following new subclause 11.8.25*

2
3 **11.8.25 Multi-BS CT support**

4
5
6 The Multi-BS CT support field indicates the availability of MS support for Multi-BS CT operation. A bit
7 value of 0 indicates “not supported” while 1 indicates “supported”.
8
9

10
11

| Type | Length | Value | Scope |
|------|--------|---|--|
| 227 | 1 | Bit 0: Multi-BS CT support Bit 1-7: Reserved; shall be set to zero | SBC-REQ (see 6.3.2.3.23) SBC-RSP (see 6.3.2.3.24) |

12
13
14
15
16
17
18
19
20
21

22
23 **11.18 MOB_NBR-ADV management message encodings**

24
25 *Insert the following new subclause 11.18.3*

26
27 **11.18.3 Neighbor FA information**

28
29
30 Neighbor FA information TLV may be included in MOB_NBR-ADV message to provide the information
31 required for an MS to scan neighbor small BSs deployed on a different frequency.
32
33
34
35
36

37

| Name | Type | Length | Value |
|-------------------------|------|----------|-------|
| Neighbor FA information | 23 | variable | |

38
39
40
41
42

43
44

| Name | Type | Length | Value |
|----------------------|------|--------|---|
| FA index | 23.1 | 1 | Index of FA on which small BSs are deployed. The bit-by-bit definition shall be determined by a service provider or a governmental body like FCC. |
| Preamble index range | 23.2 | 2 | The preamble index range of neighbor BSs deployed on the same FA. Bits 0-7: preamble index range start Bits 8-15: preamble index range end |

45
46
47
48
49
50
51
52
53
54
55

56
57 **11.19 MOB_SCN-REP management message encodings**

58
59 *Insert the following new subclause 11.19.3*

60
61 **11.19.3 Neighbor request**

62
63 Neighbor request TLV may be included in MOB_SCN-REP to request a serving BS to unicast MOB_NBR-
64 ADV message that contains system information of the neighbor BSs detected during scanning. The neighbor
65

request TLV may include request BS type and CSGID(s) and the serving BS may include a list of BSs that formed based on the reported BS type and CSGID(s).

| Name | Type | Length | Value |
|------------------|------|----------|-------|
| Neighbor request | 3 | variable | |

| Name | Type | Length | Value |
|-----------------|------|--------|--|
| Request BS type | 3.1 | 1 | Type of neighbor small BSs for which system information is requested Bit 0: CSG-closed small BS Bit 1: CSG-open small BS Bit 2: OSG small BS Bit 3-7: Reserved |
| CSGID | 3.2 | TBD | Identifier of CSG to which the BS belongs |

Insert the following new subclause 11.19.4

11.19.4 Scanning result

Scanning result TLV may be included in MOB_SCN-REP message to report scanning result of neighbor small BSs BSIDs are not shared with the serving BS. If the MS acquires BSID from the neighbor small BS during scanning, BSID TLV shall be present in this compound TLV. Otherwise, FA index TLV, Center frequency TLV and Preamble index TLV shall be present in this compound TLV instead of the BSID TLV to indicate the neighbor BS reported.

| Name | Type | Length | Value |
|-----------------|------|----------|-------|
| Scanning result | 4 | variable | |

| Name | Type | Length | Value |
|------------------|------|--------|--|
| BSID | 4.1 | 1 | BSID of the neighbor small BS reported in MOB_SCN-REP message. If BSID TLV is present, FA index TLV, Center frequency TLV and Preamble index TLV are not present in this compound TLV. |
| FA index | 4.2 | 1 | See 6.3.2.3.42 |
| Center frequency | 4.3 | 4 | See 11.4.1 |
| Preamble index | 4.4 | 1 | See 6.3.2.3.42 |
| BS CINR mean | 4.5 | 1 | See 6.3.2.3.45 |
| BS RSSI mean | 4.6 | 1 | See 6.3.2.3.45 |
| Relative delay | 4.7 | 1 | See 6.3.2.3.45 |

11.20 MOB_SCN-REQ/RSP message encodings

Insert the following new subclause 11.20.4

11.20.4 Recommended small BS information

This compound TLV may be included in the MOB_SCN-REQ/RSP message to indicate neighbor small BSs of which BSIDs are not defined in the MOB_NBR-ADV message or not shared between the MS and the serving BS.

| Name | Type | Length | Value |
|----------------------------------|------|----------|-------|
| Recommended small BS information | 4 | variable | |

| Name | Type | Length | Value |
|------------------|------|--------|---|
| BSID | 4.1 | 1 | BSID of the neighbor small BS. |
| FA index | 4.2 | 1 | If Recommended BS information TLV is included in the MOB_SCN-REQ message and BSID TLV is present in the Recommended BS information TLV, FA index TLV is not present. (See 6.3.2.3.42) |
| Center frequency | 4.3 | 4 | If Recommended BS information TLV is included in the MOB_SCN-REQ message and BSID TLV is present in the Recommended BS information TLV, Center frequency TLV is not present. (11.4.1) |
| Preamble index | 4.4 | 1 | If Recommended BS information TLV is included in the MOB_SCN-REQ message and BSID TLV is present in the Recommended BS information TLV, Preamble index TLV is not present. (6.3.2.3.42) |

Insert the following new subclause 11.33

11.33 IM-CT-CH-REQ management encodings

| Name | Type | Length | Value |
|-------------------------|------|-----------------|----------|
| IM CT CH Report Request | 1 | <i>variable</i> | Compound |

The IM CT CH Report Request consists on the following parameters:

| Name | Type | Length | Value |
|--------------------------------|------|--------|---|
| IDcell | 1.1 | 1 | Cell ID to measure the physical channel |
| Location of Midamble | 1.2 | 1 | OFDMA symbol offset to measure physical channel |
| Midamble physical CINR request | 1.3 | 1 | Midamble Physical CINR request is used with Channel Type Bit 0-3: α_{avg} in multiple of 1/16 (range is [1/16, 16/16]). Bit 4: 0: Report only mean of CINR. 1: Report both mean and standard deviation of CINR. Bit 5-6: 0b00: report CINR assuming 1 stream 0b01: report CINR assuming 2 streams 0b10: report CINR using number of streams determined by MS 0b11: <i>Reserved</i> Bit 7: <i>Reserved</i> ; shall be set to zero. |
| Feedback type | 1.4 | 1 | Feedback type to report of measured physical channel Bit 0: Recommended Bit 1: Restricted Bit 2-4: 0b000: MIMO coefficients feedback (for up to four antennas) 0b001: Long-term precoding feedback 0b010: Antenna grouping (see Table 8-337 of 8.4.11.7) 0b011: Antenna selection (see Table 8-338 of 8.4.11.7) 0b100: Quantized precoding weight feedback 0b101: Index to precoding matrix in codebook 0b110: Channel Matrix Information 0b111: Index to precoding matrix in codebook and Fast DL measurement Bit 5-7: <i>Reserved</i> |

11.34 IM-CT-CH-RSP management encodings

| Name | Type | Length | Value |
|-----------------|------|----------|----------|
| IM CT CH Report | 1 | variable | Compound |

The IM CT CH Report consists on the following parameters (see also 8.4.12 for details):

| Name | Type | Length | Value |
|--|------|--------|---|
| IDcell | 1.1 | 1 | Cell ID to report the measurement |
| Measurement location | 1.2 | 1 | Location (in unit of symbol offset) to report the measurement |
| The estimation of physical CINR measured from midamble in an STC zone with dedicated pilot | 1.3 | 2 | The estimation of physical CINR measured from midamble. Bit 15-Bit 8: mean (see also 8.4.12 for details) Bit 7-Bit 0: standard deviation |
| MIMO feedback type + feedback payload | 1.4 | 2 | CQI and MIMO feedback. The definition of MIMO feedback type (3 bits) and the corresponding feedback payload (6 bits) are the same as that defined in Table 8-192 and in 8.4.11.4, 8.4.11.5, 8.4.11.6, 8.4.11.7, 8.4.11.8, 8.4.11.9, and 8.4.11.10 for the enhanced fast-feedback channel. Bit 0-1: 0b00: <i>Reserved</i> 0b01: Recommended 0b10: Restricted 0b11: <i>Reserved</i> Bit 2-4: 0b000-0b010: <i>Reserved</i> 0b011: Quantized precoding weight feedback 0b100: Index to precoding matrix in codebook 0b101: Channel matrix Information 0b110: Index to precoding matrix in codebook and Fast DL measurement 0b111: <i>Reserved</i> Bit 5-Bit 10: Feedback payload Bit 11-Bit 15: <i>Reserved</i> |
| Number of index, L + L occurrences of Antenna index + MIMO coefficients | 1.5 | 2 | MIMO coefficients feedback up to four antennas. Number of index, L (2 bits) + L occurrences of Antenna index (2 bits) + MIMO coefficients (5 bits, see definition in 8.4.11.7) Bit 0-1: Number of index, L Bit 2-3: L occurrences of Antenna index Bit 4-5: 0b00: <i>Reserved</i> 0b01: Recommended 0b10: Restricted 0b11: <i>Reserved</i> Bit 6-Bit 11: MIMO coefficient (see 8.4.11.7) Bit 12-Bit 15: <i>Reserved</i> |

| Name | Type | Length | Value |
|--|------|--------|--|
| Long-term precoding feedback | 1.6 | 2 | Feedback of index to long-term precoding matrix in codebook (6 bits), rank of precoding codebook (2 bits) and FEC and QAM feedback (6 bits) according to Table 8-228. Bit 0-1: 0b00: <i>Reserved</i> 0b01: Recommended 0b10: Restricted 0b11: <i>Reserved</i> Bit 2-7: Index to long-term precoding matrix element in codebook Bit 8-9: Rank of precoding codebook Bit 10-15: FEC and QAM feedback |
| Antenna grouping feedback for CL MIMO | 1.7 | 2 | Antenna grouping index (6 bits) + average CQI (5 bits) Bit 0-Bit 5: Antenna grouping index 0b101110 ~ 0b110110 in Table 8-337 Bit 6-Bit 10: average CQI Bit 11-Bit 15: <i>Reserved</i> |
| Antenna selection feedback for CL MIMO | 1.8 | 2 | Number of streams (2 bits) + Antennas selection option index (3 bits) + average CQI (5 bits) of the selected antennas Bit 0-Bit 1: Number of streams Bit 2-Bit 7: Antenna selection option index (6 bits) 0b110000 ~ 0b110010 in Table 8-286 for 3 transmit antenna 0b110000 ~ 0b110101 in Table 8-287 for 4 transmit antenna Bit 8-Bit 12: average CQI of the selection antennas Bit 13-Bit 15: <i>Reserved</i> |

1
2
3
4
5
6
7
8
9
10
11
12
13
14
15
16
17
18
19
20
21
22
23
24
25
26
27
28
29
30
31
32
33
34
35
36
37
38
39
40
41
42
43
44
45
46
47
48
49
50
51
52
53
54
55
56
57
58
59
60
61
62
63
64
65

14. Management interface and procedures

This subclause defines the service primitives for use at C-SAP and M-SAP at BS and MS side of the radio interface. The specific mapping of service primitives to protocol messages in the backhaul network is out of scope of this standard.

Change subclause 14.1 as indicated:

14.1 Service primitive template

14.1.1 Universal naming schema for SAP service primitive

The primitive name defined on the SAP consists of three fields—SAP, Function, and Operation:

SAP

C = Control plane SAP

M = Management plane SAP

Function

ACM = Accounting Management

HO = Handover

IMM = Idle Mode Management

LBS = Location Based Services

MBS = Multicast Broadcast Service

NEM = Network Entry Management

RRM = Radio Resource Management

SFM = Service Flow Management

SM = Security Management

SMC = Secondary Management Connection

SSM = Subscriber Station Management

BPM = BS Power Management

IM = Interference Management

Operation

REQ = Request

RSP = Response to the REQ message

ACK = Acknowledgment to the reception of REQ or RSP or IND message

IND = Event Notification

These primitives are symmetrical between the IEEE 802.16 entity and the NCMS. That is, both the IEEE 802.16 entity (SS/MS or BS) and the NCMS can send these primitives depending on the functional behavior defined for M-SAP and C-SAP. ACK shall only be supported across the C-SAP.

- A service primitive of type REQ is used whenever a response to the primitive is solicited. If there is a REQ message on the radio interface, it is generally mapped to a REQ on C-SAP/M-SAP.
- A service primitive of type RSP is used in response to a REQ primitive. Moreover, if there is a RSP message on the radio interface, it is generally mapped to a RSP on C-SAP/M-SAP.
- A service primitive of type IND is used at C-SAP or M-SAP for event notification if a response to this primitive is not solicited, and if the primitive is not sent in response to a REQ primitive.
- A service primitive of type ACK can be used to acknowledge the receipt of a C-SAP primitive of type REQ, RSP, or IND.

1
2
3 The specific usage of these operation types for the respective control and management functions is specified
4 in the subsequent subclauses.

5 The IEEE 802.16 entity shall support the primitives that are delivered through C-SAP or M-SAP interfacing
6 with NCMS.
7
8
9

10 **14.1.2 SAP service primitive object format**

11
12 There are two types of services: M-SAP/C-SAP operation service primitive and M-SAP/C-SAP notification
13 service primitive. The REQ and RSP operations shall use the operation service primitive and the IND
14 operation shall use the notification service primitive. The ACK operation shall use the same primitive
15 format as the primitive it acknowledges.
16
17
18
19

20 **14.1.2.1 M-SAP/C-SAP operation service primitive**

21
22 This primitive is defined as Primitive_name () with a parameter list.
23
24

25 The format shall be:

```
26 Primitive_name  
27 (  
28     Operation_Type,  
29     Action_Type,  
30     Destination,  
31     Attribute_list  
32 )  
33  
34  
35  
36  
37  
38  
39  
40  
41  
42  
43  
44  
45  
46  
47  
48  
49  
50  
51  
52  
53  
54  
55  
56  
57  
58  
59  
60  
61  
62  
63  
64  
65
```

The parameters shall be described briefly in Table 14-1.

Table 14-1—M-SAP/C-SAP Operation Types

| Parameter name | Mandatory/Optional | |
|----------------|--------------------|--|
| Operation_Type | M | Create, Delete, Get, Set, Action |
| Action_Type | O | When Operation_Type is Action, valid values for Action_Type are: Certificate_Verification, Context_Transfer, Idle_Mode_Initiation, Network_Re-Entry_from_Idle_Mode, HO-Serving, HO-Target, HO-Mobile, Spare Capacity Report, PHY Report, Ranging, Registration, SS Basic Capability, Power On, Power Down, Reset, Hold, Normal, Deregistration, Location Update, <u>Duty-cycled mode.</u> <u>Standby mode.</u> <u>IM_RM_Configuration.</u> <u>IM_CT_Configuration</u> |
| Destination | M | This indicates the destination of the primitive. Allowed values are: SS or MS, BS, NCMS. |
| Attribute_list | <u>O</u> | Array of pair (Attribute_ID, Attribute_value). In Get request operation, Attribute_value is Null <u>If Operation_Type is set to Get for request operation, Attribute_list is array of only Attribute_ID.</u> <u>Otherwise if Attribute_list is present, Attribute_list is Array of the pair (Attribute_ID, Attribute_value)</u> |

14.1.2.2 M-SAP/C-SAP notification service primitive

This primitive shall be defined as Primitive_name () with a parameter list.

The format shall be:

```

Primitive_name
(
    Event_Type,

```

1 Destination,
2 Attribute_List
3)
4)
5)
6)

7 The parameters are described briefly in Table 14-2.
8
9

10
11
12 **Table 14-2—M-SAP/C-SAP Event Types**
13

| Parameter name | Mandatory/Optional | |
|----------------|--------------------|---|
| Event_Type | M | Specify the type of occurring event, valid values for Event_Type are: Accounting, EAP_Start, EAP_Transfer, Certificate_Information, SMC_PAYLOAD, IP_ALLOCATION, Paging_Announce, HO-Start, HO-Cancel, HO-Scan, HO-CMPLT, MIH-IND, Spare Capacity Report, Neighbor-BS Radio Resource Stations Update, NBR_BS_Update, Network_attached, Location_Update_CMPLT, Reset, Hold, Normal, MBS Portion Layout, LBS, <u>IM_RM_Report</u> , <u>IM_CT_Report</u> , <u>IM_CT_Indication</u> |
| Destination | M | This indicates the destination of the primitive. Allowed values are: SS or MS, BS, NCMS.. |
| Attribute_list | <u>O</u> | <u>If Attribute_list is present, Attribute_list is Array of pair (Attribute_ID, Attribute_value)</u> |

14
15
16
17
18
19
20
21
22
23
24
25
26
27
28
29
30
31
32
33
34
35
36
37
38
39
40
41
42
43
44
45
46
47
48
49
50
51
52
53
54
55
56
57
58
59
60
61
62 **14.1.3 SAP service primitive flow diagram template**
63
64

65 Four typical handshake scenarios shown in Figure 14-1. The procedures are applicable to BS and SS side.

1
2
3
4
5
6
7
8
9
10
11
12
13
14
15
16
17
18
19
20
21
22
23
24
25
26
27
28
29
30
31
32
33
34
35
36
37
38
39
40
41
42
43
44
45
46
47
48
49
50
51
52
53
54
55
56
57
58
59
60
61
62
63
64
65

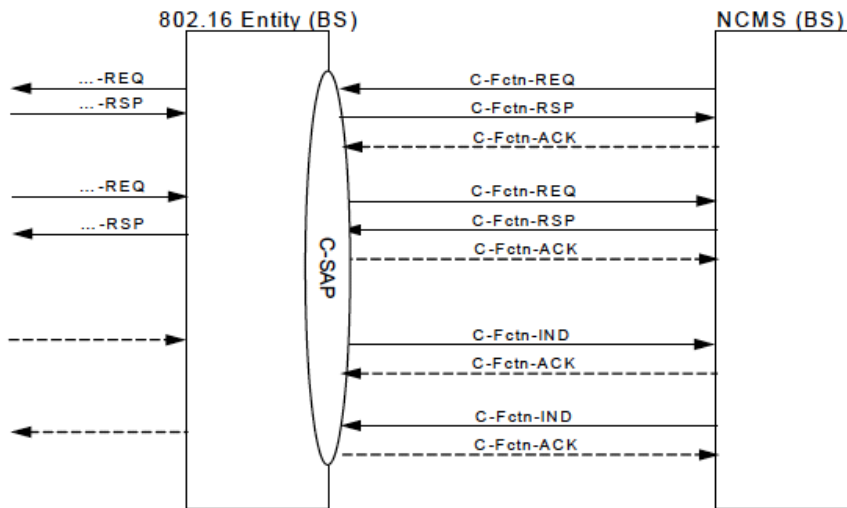


Figure 14-1—SAP service primitive Flow Diagram template

The figure is illustrative only and provides an example of correct formatting of primitive figures.

14.2 Management and control functions

Insert new subclause 14.2.12 as indicated:

14.2.12 BS power management

The BS power management primitives are a set of primitives for supporting BS power management between IEEE 802.16 entity and NCMS. BS power management uses BS power management Services in the NCMS.

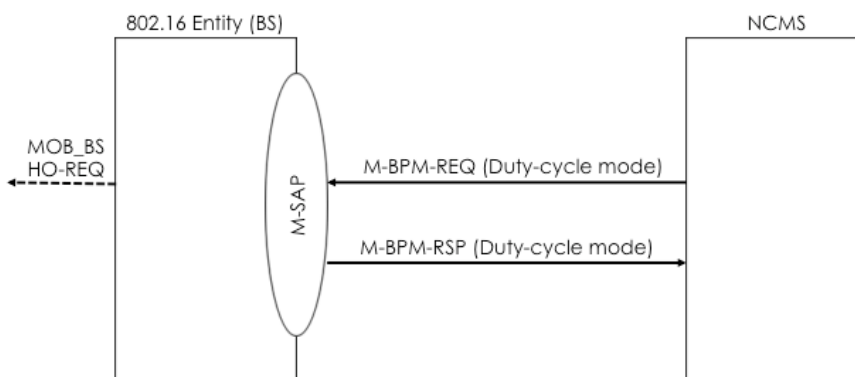


Figure 14-49—Primitive flow for duty-cycled mode transition

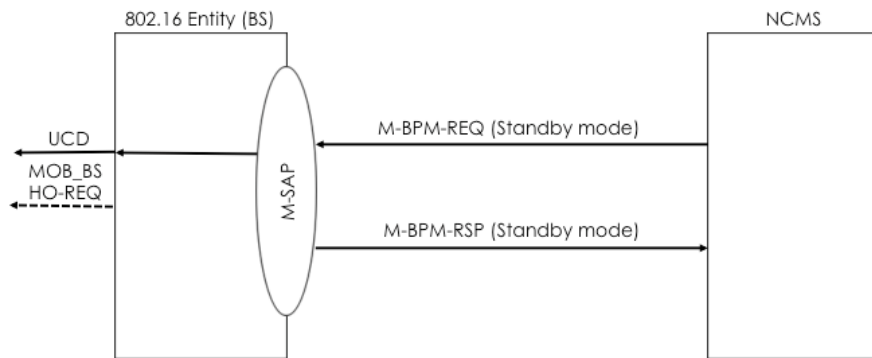


Figure 14-50—Primitive flow for NCMS-initiated standby mode transition

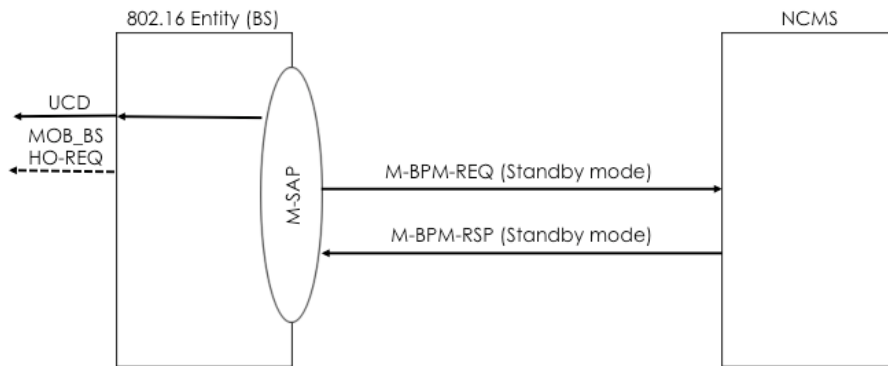


Figure 14-51—Primitive flow for BS-initiated standby mode transition

14.2.12.1 M-BPM-REQ

This primitive is used by a BS or an NCMS to control BS power management operation. The NCMS generates this primitive to request the IEEE 802.16 entity (BS) to perform operational mode transition and update of operation parameters for a specific operation mode. The possible Action_Types for this primitive are listed in table below:

| Action_Type | Description |
|-----------------|---|
| Duty-cycle mode | Duty-cycle mode transition procedure between BS and NCSM. |
| Standby mode | Standby mode transition procedure between BS and NCMS. |

14.2.12.1.1 M-BPM-REQ (Action_Type = Duty-cycle mode)

14.2.12.1.1.1 Function

This primitive is used by the NCMS to control an operational mode of a BS and to update operational parameters for duty-cycle mode. This primitive is also used by the BS to request a termination of duty-cycle mode to the NCMS. The primitive is only used between IEEE 802.16 entity and NCMS at BS side.

14.2.12.1.1.2 Semantics

The following parameters are included in this primitive:

```

M-BPM-REQ
(
  Operation_Type: Action,
  Action_Type: Duty-cycle mode,
  Destination: BS, NCMS,
  Attribute_List:
    Operation,
    Duty-cycle pattern,
    Action time,
    Reason,
    MS information
)

```

Operation

Indicates a type of operation

- 0: initiate duty-cycle mode
- 1: terminate duty-cycle mode
- 2: update of duty-cycle pattern

Duty-cycle pattern

Indicates a duty-cycle pattern that shall be used during duty-cycle mode. This parameter includes a length of an inactive interval, a length of an active interval and start frame offset. In case Operation is set to 2, the BS in duty-cycle mode shall update the current duty-cycle pattern with this duty-cycle pattern. This parameter is included in this primitive only when this parameter is generated by the NCMS.

Action time

Indicates a time when the BS initiates duty-cycle mode or updates duty-cycle pattern.

Reason

Indicates a reason for mode transition. This parameter is included in this primitive only when this primitive is generated by the BS in duty-cycle mode to request the termination of duty-cycle mode (e.g., due to MS initial network entry or network reentry during an active interval)

MS information

Information on the MS that performs initial network entry or network reentry (e.g., MS identifier, network entry type). This parameter is included in this primitive only when this primitive is generated by the BS in duty-cycle mode to request the termination of duty-cycle mode.

14.2.12.1.1.3 When generated

- NCMS to BS: When a BS power controller in the NCMS makes a decision on mode transition of a BS for some reasons (e.g., interference mitigation, BS power saving, etc), the BS power controller in the NCMS generates this primitive to request the BS to initiate or terminate the duty-cycle mode.

1 This primitive is also generated by the NCMS to request the BS in duty-cycle mode to update a
 2 duty-cycle pattern for an efficient operation of the duty-cycle mode.

- 3
 4 - BS to NCMS: When a BS in duty-cycle mode has to terminate the duty-cycle mode for some rea-
 5 sons (e.g., a new initial network entry or network reentry), the BS generates this primitive to request
 6 the termination of the duty-cycle mode to the BS power controller in NCMS.
 7

9 **14.2.12.1.1.4 Effect of receipt**

- 10
 11 - NCMS to BS: If the BS receives this primitive, it shall perform the operation indicated by Operation
 12 parameter included in this primitive. If the Operation parameter is set to 0 (initiate duty-cycle
 13 mode), the BS first triggers its attached MSs, if any, to handover to the neighbor cells. After the
 14 completion of the operation requested by the NCMS, the BS shall generate M-BPM-RSP primitive
 15 to respond to this primitive.
 16
 17 - BS to NCMS: If the NCMS receives this primitive, it makes a decision on the requested mode tran-
 18 sition. If the NCMS accepts the request, it transmits M-BPM-RSP primitive with “Result” set to suc-
 19 cess. Otherwise, it transmits M-BPM-RSP primitive with “Result” set to failure.
 20
 21

22 23 **14.2.12.1.2 M-BPM-REQ (Action_Type = Standby mode)**

24 25 **14.2.12.1.2.1 Function**

26
 27
 28 This primitive is used by the NCMS to request initiation or termination of standby mode or to update mode
 29 transition time. This primitive is also used by the BS to report periodic mode transition to the NCMS. The
 30 primitive is only used between IEEE 802.16 entity and NCMS at BS side.
 31

32 33 **14.2.12.1.2.2 Semantics**

34
 35
 36 The following parameters are included in this primitive :

37
 38 M-BPM-REQ

39
 40 (
 41 Operation_Type: Action,
 42 Action_Type: Standby mode,
 43 Destination: BS, NCMS,
 44 Attribute_List:
 45 Operation,
 46 Mode transition time
 47
 48
 49)

50
 51
 52 Operation

53 Indicates a type of operation
 54 0: initiate standby mode
 55 1: terminate standby mode
 56 2: update of standby mode parameter
 57

58
 59 Mode transition time

60 Indicates when the BS initiates or terminates standby mode. If this parameter is not included
 61 in this primitive, the BS shall initiate or terminate the standby mode as soon as it receives this
 62 primitive. Otherwise, the BS initiates or terminates the standby mode at the time specified by
 63 this parameter.
 64
 65

1 **14.2.12.1.2.3 When generated**

- 2
- 3
- 4 - NCMS to BS: When a BS power controller in the NCMS makes a decision on mode transition of a
- 5 BS for some reasons (e.g., interference mitigation, BS power saving, etc), the BS power controller in
- 6 the NCMS generates this primitive to request the BS to initiate or terminate the standby mode. This
- 7 primitive is also generated by the NCMS to specify when the BS performs standby mode initiation
- 8 or termination.
- 9
- 10 - BS to NCMS: This primitive is generated by the BS after performing standby mode initiation or ter-
- 11 mination at the time that was previously specified by the NCMS.
- 12

13 **14.2.12.1.2.4 Effect of receipt**

- 14
- 15
- 16 - NCMS to BS: If the BS receives this primitive, it shall perform the operation indicated by Operation
- 17 parameter included in this primitive. If the Operation parameter is set to 0 (initiate standby mode),
- 18 the BS first triggers its attached MSs, if any, to handover to the neighbor cells. After the completion
- 19 of the operation requested by the NCMS, the BS shall generate M-BPM-RSP primitive to respond to
- 20 this primitive. If the Operation parameter is set to 1 (terminate standby mode), the BS shall transit to
- 21 Initialization State after transmitting the M-BPM-RSP primitive. If the Operation parameter is set to
- 22 2 (update of standby mode parameter), the BS stays in the current operational mode and performs
- 23 mode transition at the time specified by the Mode transition time parameter in this primitive.
- 24
- 25
- 26 - BS to NCMS: If the NCMS receives this primitive, it updates the current operational mode of the BS
- 27 according to the Operation parameter in this primitive after generating M-BPM-RSP primitive.
- 28

29 **14.2.12.2 M-BPM-RSP**

30

31

32 This primitive is used by the BS or the NCMS in response to M-BPM-REQ primitive for BS power

33 management. The possible Action_Types for this primitive are listed in table below:

34

35

36

37

| Action_Type | Description |
|-----------------|---|
| Duty-cycle mode | Duty-cycle mode transition procedure between BS and NCMS. |
| Standby mode | Standby mode transition procedure between BS and NCMS. |

38

39

40

41

42

43

44

45

46

47

48

49 **14.2.12.2.1 M-BPM-RSP (Action_Type = Duty-cycle mode)**

50

51 **14.2.12.2.1.1 Function**

52

53

54 This primitive is used by the BS or the NCMS in response to M-BPM-REQ primitive for BS power manage-

55 ment.

56

57 **14.2.12.2.1.2 Semantics**

58

59

60 The following parameters are included in this primitive:

61

62 **M-BPM-RSP**

63 (

64 Operation_Type: Action,

65

1 Action_Type: Duty-cycle mode,
 2 Destination: NCMS, BS
 3 Attribute_List:
 4 Operation,
 5 Result,
 6 Reason
 7)
 8
 9
 10 Operation
 11 Indicates a type of operation. The value of this parameter shall be the same as one included in
 12 the received M-BPM-REQ primitive.
 13 0: initiate duty-cycle mode
 14 1: terminate duty-cycle mode
 15 2: update of duty-cycle pattern
 16
 17 Result
 18 Indicates a result of the operation indicated by the Operation parameter included in the
 19 received M-BPM-REQ primitive. This parameter may include 'success' or 'failure'.
 20
 21 Reason
 22 Indicates a reason for failure. This parameter is included in this primitive only when the
 23 Result parameter in this primitive is set to 'failure'.
 24
 25

26 **14.2.12.2.1.3 When generated**

- 27
 28
 29 - BS to NCMS: If the BS receives the M-BPM-REQ primitive, it generates this primitive after per-
 30 forming the operation indicated by Operation parameter included in the M-BPM-REQ primitive.
 31
 32 - NCMS to BS: If the NCMS receives the M-BPM-REQ primitive, it generates this primitive after
 33 making a decision on the requested mode transition. If the NCMS accepts the request, it generates
 34 M-BPM-RSP primitive with Result parameter set to 'success'. Otherwise, it generates M-BPM-RSP
 35 primitive with Result parameter set to 'failure'.
 36

37 **14.2.12.2.1.4 Effect of receipt**

- 38
 39
 40 - BS to NCMS: If the Result parameter is set to 'success', the NCMS updates a current operational
 41 mode of the BS. The NCMS may notify neighbor BSs of information on the BS's operational mode
 42 and relevant parameters. This information may be used by the neighbor BSs for radio resource man-
 43 agement. If the Result parameter is set to 'failure', the NCMS may re-generate M-BPM-REQ primi-
 44 tive or terminate the transaction according to service provider's policy. If the NCMS does not
 45 receive this primitive within a pre-defined time, the NCMS regards this transaction as failure.
 46
 47 - NCMS to BS: If the Result parameter in the received M-BPM-RSP primitive is 'success', the BS
 48 terminate duty-cycle mode and transmits a RNG-RSP message to accept an MS's network access. If
 49 the Result parameter in the received M-BPM-RSP primitive is 'failure', the BS continues to stay in
 50 duty-cycle mode and transmits a RNG-RSP message to reject an MS's network access.
 51
 52

53 **14.2.12.2.2 M-BPM-RSP (Action_Type = Standby mode)**

54 **14.2.12.2.2.1 Function**

55
 56
 57
 58
 59 This primitive is used by the BS or the NCMS in response to M-BPM-REQ primitive for BS power manage-
 60 ment.
 61

62 **14.2.12.2.2.2 Semantics**

63
 64
 65 The following parameters are included in this primitive:

M-BPM-RSP

```

1      (
2
3      Operation_Type: Action,
4      Action_Type: Standby mode,
5      Destination: BS, NCMS
6      Attribute_List:
7          Operation,
8          Result,
9          Reason
10     )
11
12
13
14

```

Operation

Indicates a type of operation.

- 0: initiate standby mode
- 1: terminate standby mode
- 2: update of standby mode parameter

Result

Indicates a result of the operation indicated by the Operation parameter included in the received M-BPM-REQ primitive. This parameter may include 'success' or 'failure'.

Reason

Indicates a reason for failure. This parameter is included in this primitive only when the Result parameter in this primitive is set to 'failure'.

14.2.12.2.2.3 When generated

- BS to NCMS: If the BS receives the M-BPM-REQ primitive, it generates this primitive after performing the operation indicated by Operation parameter included in the M-BPM-REQ primitive.
- NCMS to BS: If the NCMS receives the M-BPM-REQ primitive, the NCMS updates the current operational mode of the BS according to the Operation parameter in the received M-BPM-REQ primitive after generating this primitive.

14.2.12.2.2.4 Effect of receipt

- BS to NCMS: If the Result parameter is set to 'success', the NCMS updates a current operational mode of the BS. The NCMS may notify neighbor BSs of the BS's operational mode for them to manage neighbor BS list. If the Result parameter is set to 'failure', the NCMS may re-generate M-BPM-REQ primitive or terminate the transaction according to service provider's policy. If the NCMS does not receive this primitive within a pre-defined time, the NCMS regards this transaction as failure
- NCMS to BS: If the BS receives this primitive, it acknowledges the NCMS has received the mode transition of the BS.

Insert new subclause 14.2.13 as follows:

14.2.13 Interference management

The IM Primitives are a set of primitives for supporting IM procedure between IEEE 802.16 entity and NCMS, as well as between IEEE 802.16 entities. The IM Primitives include resource management for IM and cooperative transmission primitives.

Figure 14-52 to 54 shows the IM Control Primitives.

1
2
3
4
5
6
7
8
9
10
11
12
13
14
15
16
17
18
19
20
21
22
23
24
25
26
27
28
29
30
31
32
33
34
35
36
37
38
39
40
41
42
43
44
45
46
47
48
49
50
51
52
53
54
55
56
57
58
59
60
61
62
63
64
65

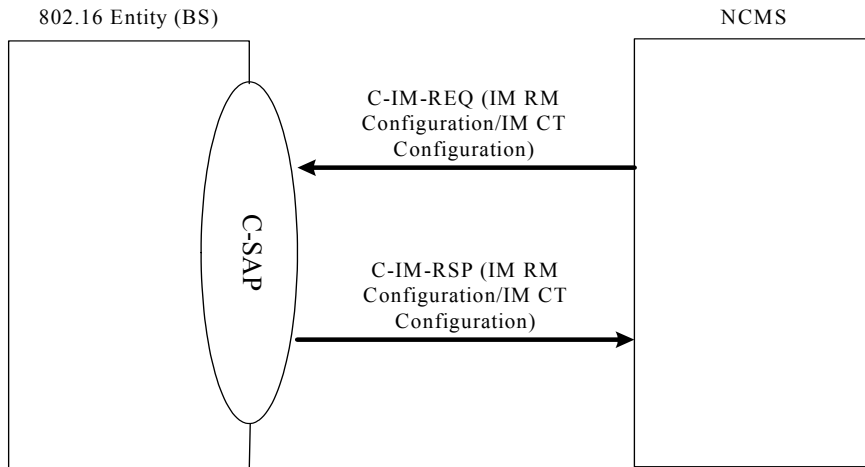


Figure 14-52—Primitive flow of C-IM-REQ/RSP

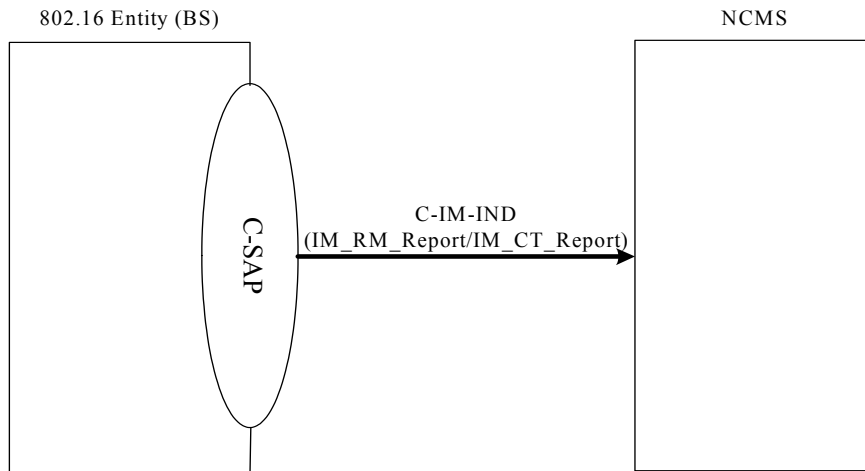


Figure 14-53—Primitive flow between IEEE 802.16 entity (BS) and NCMS (IM_RM_Report/IM_CT_Report)

1
2
3
4
5
6
7
8
9
10
11
12
13
14
15
16
17
18
19
20
21
22
23
24
25
26
27
28
29
30
31
32
33
34
35
36
37
38
39
40
41
42
43
44
45
46
47
48
49
50
51
52
53
54
55
56
57
58
59
60
61
62
63
64
65

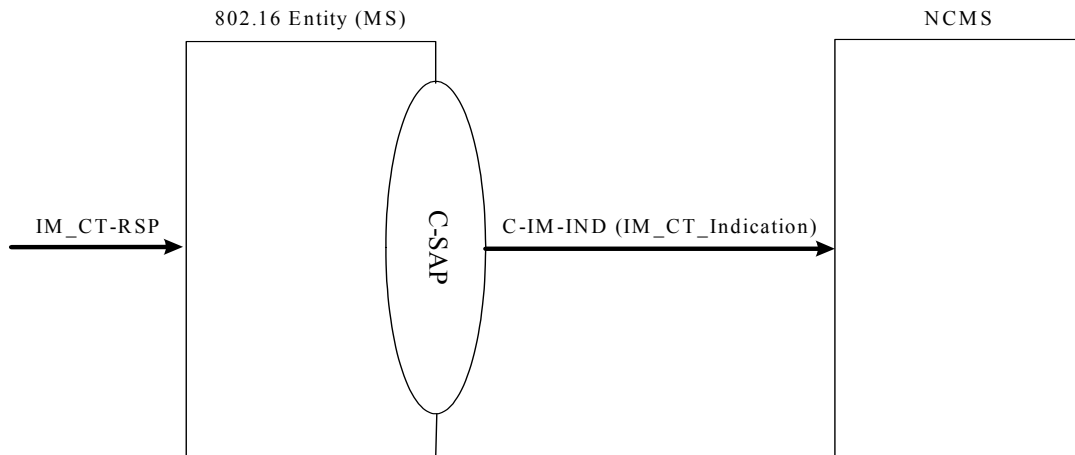


Figure 14-54—Primitive flow between IEEE 802.16 entity (BS) and NCMS when C-IM-RSP message is received

14.2.13.1 C-IM-REQ

This primitive is used by NCMS to request the IEEE 802.16 entity to perform interference management procedures. The Action_Types for this primitive are listed in the following table.

| Action_Type | Description |
|---------------------|--|
| IM RM Configuration | Configuration procedure between BS and NCMS on resource management for IM. |
| IM CT Configuration | Configuration procedure between BS and NCMS on Multi-BS CT for IM. |

14.2.13.1.1 C-IM-REQ (Action_Type = IM_RM_Configuration)

14.2.13.1.1.1 Function

This primitive is used by the NCMS to request a BS to provide information.

14.2.13.1.1.2 Semantics

C-IM-REQ

```

(
    Operation_Type: Action,
    Action_Type: IM_RM_Configure,
    Destination: BS,
    Attribute_List:
        Request Type,
        List of Configuration Attributes:
            (
    
```

```

1      N_PERMUTATION_ZONES,
2      for(i=0, i<N_PERMUTATION_ZONES; i++)
3      (
4          Permutation scheme,
5          Permutation Zone Subchannel Bitmap,
6          Use All SC,
7          DL_PermBase,
8          PRBS_ID,
9          AMC type,
10         OFDMA Symbol Offset,
11         Number of OFDMA Symbols,
12         Subchannel offset,
13         Number of Subchannels,
14         Tx Power
15     )
16 )
17 )
18 )
19 )
20 )
21 Action Time,
22 List of Report Attributes:
23 (
24     Report type,
25     Report Period P,
26     Report Threshold for Available Radio Resource (RT_RR),
27     Report Threshold for Radio Resource Fluctuation (RT_RF),
28     Absolute Report High Threshold for Available Radio Resource (ARHT_RR),
29     Absolute Report Low Threshold for Available Radio Resource (ARLT_RR),
30     Absolute Report High Threshold for Radio Resource Fluctuation (ARHT_RF),
31     Absolute Report Low Threshold for Radio Resource Fluctuation (ARLT_RF),
32     MS MAC Address
33 )
34 )
35 )
36 )
37 )
38 )

```

Request Type

Type of request; bitmap:
 Bit 0: Set the partition
 Bit 1: Report status

When Request Type is set to “Set the partition”, following attribute lists are valid:

N_PERMUTATION_ZONES

Number of radio frame subsections for which the resource partition will be indicated. A value of 1 indicates that the entire DL and UL radio subframe is considered to be a single permutation zone each.

Permutation scheme

Denotes permutation scheme used in the current permutation zone. The following types are possible:

- DL PUSC permutation
- DL FUSC permutation
- DL Optional FUSC permutation
- DL AMC
- DL TUSC1
- DL TUSC2
- UL PUSC
- UL AMC

Permutation Zone Subchannel Bitmap

Indicates the subchannels available for transmission in the current permutation zone

Use All SC

When set, this field indicates transmission on all available subchannels. For FUSC permutation, transmission is always on all subchannels.

DL_PermBase

DL Permutation base for the specified DL zone. DL_PermBase field shall be set to the 5 LSBs of IDcell as indicated by the frame preamble.

PRBS_ID

Values: 0..2. Refer to 8.4.9.4.1.

AMC type

Indicates the AMC type in case permutation type = 0b11, otherwise shall be set to 0.

AMC type (NxM = N bins by M symbols):

- 1x6

- 2x3

- 3x2

Note that only 2x3 band AMC subchannel type (AMC Type = 0b01) is supported by MS

OFDMA Symbol offset

Denotes the start of the current permutation zone in number of OFDMA symbols (counting from the frame preamble and starting from 0)

Number of OFDMA Symbols

Denotes the number of OFDMA symbols used in the current permutation zone.

Subchannel offset

Denotes the start of the current zone in number of OFDMA subchannels

Number of Subchannels

Denotes the number of OFDMA subchannels used in the current permutation zone.

Tx Power

Denotes the maximum transmit power used in the current permutation zone (in dBm).

Action Time

Denotes the time to start this action.

When Request Type is set to “Report status”, following attribute lists are valid:

Report type

Indicates the type to report the status:

- radio resource status

- report the link level quality for a specific MS

Report Characteristics

Indicates whether the report shall be sent periodically, or event driven.

- Bit 0: Periodically as defined by report period P.

- Bit 1: regularly whenever resource have changed as defined by RT since the last report.

Bit 2: Change of IM RM configuration (set the partition). This report shall be given whenever any of the parameters (Request type [bit 0] is set to “set the partition”) at the BS have changed.

Bit 3: Report shall be given per permutation zone.

Report Period P

The Time P is used by the BS as reporting period for producing the information requested by the NCMS.

Report Threshold for Available Radio Resource (RT_RR)

The threshold value RT_RR shall be used by the BS to send another report as soon as the value of the available radio resource to report increases by more than that threshold value or decreases by less than that threshold value.

Report Threshold for Radio Resource Fluctuation (RT_RF)

The threshold value RT_RF shall be used by the BS to send another report as soon as the value of the radio resource fluctuation to report increases by more than that threshold value or decreases by less than that threshold value.

Absolute Report High Threshold for Available Radio Resource (ARHT_RR)

The threshold value RT shall be used by the BS to send another report as soon as value of the available radio resource to report is greater than that threshold value.

Absolute Report Low Threshold for Available Radio Resource (ARLT_RR)

The threshold value RT shall be used by the BS to send another report as soon as value of the available radio resource to report is less than that threshold value.

Absolute Report High Threshold for Radio Resource Fluctuation (ARHT_RF)

The threshold value RT shall be used by the BS to send another report as soon as value of the radio resource fluctuation to report is greater than that threshold value.

Absolute Report Low Threshold for Radio Resource Fluctuation (ARLT_RF)

The threshold value RT shall be used by the BS to send another report as soon as value of the radio resource fluctuation to report is less than that threshold value.

MS MAC Address

48-bit unique identifier of the MS. Only valid when the report type is for “report the link level quality for a specific MS”

14.2.13.1.1.3 When generated

The NCMS at BS side may use this primitive at any time to order a BS to perform resource management operation for IM for subordinate MS(s).

14.2.13.1.1.4 Effect of receipt

The BS shall generate the required operation related to configure resource management, e.g., resource partitioning, report based on the report type for IM.

14.2.13.1.2 C-IM-REQ (Action_Type = IM_CT_Configuration)**14.2.13.1.2.1 Function**

This primitive is used by the NCMS to request a BS to provide information.

14.2.13.1.2.2 Semantics**C-IM-REQ**

```
(
  Operation_Type: Action,
  Action_Type: IM_CT_Configure,
  Destination: BS,
  Attribute_List:
    Request Type,
    N_PERMUTATION_ZONES
  List of Configuration Attributes:
    (
      N_PERMUTATION_ZONES,
      for(i=0, i<N_PERMUTATION_ZONES; i++)
        (
          Permutation scheme,
          Permutation Zone Subchannel Bitmap,
          Use All SC,
          DL_PermBase,
          PRBS_ID,
          AMC type,
```

```

1      OFDMA Symbol Offset,
2      Number of OFDMA Symbols,
3      Subchannel offset,
4      Number of Subchannels,
5      Tx Power,
6      STC,
7      Midamble presence,
8      Midamble boosting,
9      Dedicated Pilots,
10     N_CT,
11     for(j=0, j<N_CT; j++)
12     (
13         Multi-BS CT_ID,
14         Anchor Temp BSID,
15         Temp BSID,
16         N_BS_SETS,
17         for all BSs in the BS_SET List:
18             Neighbor BSID,
19             Neighbor Temp BSID,
20         List of Antenna configuration Attributes:
21         (
22             Matrix indicator
23             For all antennas of BS:
24                 Antenna index of BS,
25                 Antenna index for Multi-BS CT
26         )
27     )
28 )
29 )
30 )
31 )
32 )
33 )
34 )
35 )
36 CT Add Threshold,
37 CT Delete Threshold,
38 CT_C_Th0 Threshold,
39 CT_R_Th0 Threshold,
40 CT_C_Th1 Threshold,
41 CT_R_Th1 Threshold,
42 CT_C_Th2 Threshold,
43 CT_R_Th2 Threshold,
44 Action Time,
45 Report type,
46 Report Characteristics,
47 Report Period P,
48 Report Threshold for CINR (RT_CINR),
49 Report Threshold for RSSI (RT_RSSI),
50 Absolute Report High Threshold for CINR (ARHT_CINR),
51 Absolute Report Low Threshold for CINR (ARLT_CINR),
52 Absolute Report High Threshold for RSSI (ARHT_RSSI),
53 Absolute Report Low Threshold for RSSI (ARLT_RSSI),
54 MS MAC Address,
55 N_BS_SETS,
56 for all BSs in the BS_SET List:
57     BSID,
58     Temp BSID
59 )
60 )
61 )
62 )
63 )
64 )
65 )

```


Request Type

Type of request; bitmap:

Bit 0: Set the Multi-BS CT

Bit 1: Report status

When Request Type is set to “Set the Multi-BS CT”, following attribute lists are valid:

N_PERMUTATION_ZONES

Number of radio frame subsections for which the resource partition will be indicated. A value of 1 indicates that the entire DL and UL radio subframe is considered to be a single permutation zone each.

Permutation scheme

Denotes permutation scheme used in the current permutation zone. The following types are possible:

- DL PUSC permutation

- DL FUSC permutation

- DL Optional FUSC permutation

- DL AMC

- DL TUSC1

- DL TUSC2

- UL PUSC

- UL AMC

Permutation Zone Subchannel Bitmap

Indicates the subchannels available for transmission in the current permutation zone

Use All SC

When set, this field indicates transmission on all available subchannels. For FUSC permutation, transmission is always on all subchannels.

DL_PermBase

DL Permutation base for the specified DL zone. DL_PermBase field shall be set to the 5 LSBs of IDcell as indicated by the frame preamble.

PRBS_ID

Values: 0..2. Refer to 8.4.9.4.1.

AMC type

Indicates the AMC type in case permutation type = 0b11, otherwise shall be set to 0.

AMC type (NxM = N bins by M symbols):

- 1x6

- 2x3

- 3x2

Note that only 2x3 band AMC subchannel type (AMC Type = 0b01) is supported by MS

OFDMA Symbol offset

Denotes the start of the current permutation zone in number of OFDMA symbols (counting from the frame preamble and starting from 0)

Number of OFDMA Symbols

Denotes the number of OFDMA symbols used in the current permutation zone.

Subchannel offset

Denotes the start of the current zone in number of OFDMA subchannels

Number of Subchannels

Denotes the number of OFDMA subchannels used in the current permutation zone.

Tx Power

Denotes the maximum transmit power used in the current permutation zone (in dBm).

STC

Denotes the STC in the current permutation zone:

- No STC

- STC using 2 antennas

1 - STC using 3 antennas
2 - STC using 4 antennas
3 - FHDC using 2 antennas
4
5 **Midamble presence**
6 Indicates midamble presence in the first symbol of the current permutation zone with the
7 corresponding antenna configuration, as specified in 8.4.8.5.
8
9 **Midamble boosting**
10 Indicates whether the midamble is boosting when midamble presence is set.
11
12 **Dedicated Pilots**
13 Indicates whether the pilot symbols are broadcast or dedicated:
14 - broadcast
15 dedicate
16
17 **N_CT**
18 Indicates the number of Multi-BS CT supported in the current permutation.
19
20 **Multi-BS CT_ID**
21 Indicates identifier of the Multi-BS CT.
22
23 **Anchor Temp BSID**
24 Indicates the Temp BSID (member ID) of the anchor BS in the Multi-BS CT group (identi-
25 fied by Multi-BS CT ID)
26
27 **Temp BSID**
28 Indicates the Temp BSID(member ID) of the BS in the Multi-BS CT group (identified by
29 Multi-BS CT ID)
30
31 **N_BS_SETS**
32 Number of neighbor BSs in the current Multi-BS CT group (identified by Multi-BS CT ID).
33
34 **Neighbor BSID**
35 ID of the neighbor BS
36
37 **Neighbor Temp BSID**
38 Temp BSID of the neighbor BS in the Multi-BS CT group (identified by Multi-BS CT ID)
39
40 **Matrix indicator**
41 Indicates the STC matrix to be used in the Multi-BS CT.
42 - Matrix A
43 - Matrix B
44 - Matrix C
45
46 **Antenna index of BS**
47 Indicates the antenna index of the BS
48
49 **Antenna index for Multi-BS CT**
50 Indicates the antenna index to be used in the Multi-BS CT.
51
52 **CT Add Threshold**
53 Number of neighbor BSs in the current Multi-BS CT group (identified by Multi-BS CT ID).
54
55 **CT Delete Threshold**
56 Indicates the threshold values to delete the neighbor BS from the multi-BS candidate set.
57
58 **CT_C_Th0 Threshold**
59 Indicates the CINR threshold values to initiate a multi-BS operation.
60
61 **CT_R_Th0 Threshold**
62 Indicates the RSSI threshold values to initiate a multi-BS operation.
63
64 **CT_C_Th1 Threshold**
65 Indicates the CINR threshold values to initiate a single-BS precoding.
66
67 **CT_R_Th1 Threshold**
68 Indicates the RSSI threshold values to initiate a single-BS precoding.
69
70 **CT_C_Th2 Threshold**
71 Indicates the CINR threshold values to initiate a multi-BS joint processing.
72
73 **CT_R_Th2 Threshold**
74 Indicates the RSSI threshold values to initiate a multi-BS joint processing.
75
76 **Action Time**

Denotes the time to start this action.

When Request Type is set to “Report status”, following attribute lists are valid:

Report type

Indicates the type to report the status:

- report the link level quality for a specific MS

Report Characteristics

Indicates whether the report shall be sent periodically, or event driven.

- Bit 0: Periodically as defined by report period P.
- Bit 1: regularly whenever resource have changed as defined by RT since the last report.
- Bit 2: Change of IM CT configuration. This report shall be given whenever any of the parameters (Request type [bit 0] is set to “set the Multi-BS CT”) at the BS have changed.
- Bit 3: Report shall be given per permutation zone.
- Bit 4: Report shall include recommended PMI.
- Bit 5: Report shall include restricted PMI.

Report Period P

The Time P is used by the BS as reporting period for producing the information requested by the NCMS.

Report Threshold for CINR (RT_CINR)

The threshold value RT shall be used by the BS to send another report as soon as value of the CINR to report increases by more than that threshold value or decreases by less than that threshold value.

Report Threshold for RSSI (RT_RSSI)

The threshold value RT shall be used by the BS to send another report as soon as value of the RSSI to report increases by more than that threshold value or decreases by less than that threshold value.

Absolute Report High Threshold for CINR (ARHT_CINR)

The threshold value RT shall be used by the BS to send another report as soon as value to report is greater than that threshold value.

Absolute Report Low Threshold for CINR (ARLT_CINR)

The threshold value RT shall be used by the BS to send another report as soon as value to report is less than that threshold value.

Absolute Report High Threshold for RSSI (ARHT_RSSI)

The threshold value RT shall be used by the BS to send another report as soon as value to report is greater than that threshold value.

Absolute Report Low Threshold for RSSI (ARLT_RSSI)

The threshold value RT shall be used by the BS to send another report as soon as value to report is less than that threshold value.

MS MAC Address

48-bit unique identifier of the MS. Only valid when the report type is for “report the link level quality for a specific MS”

14.2.13.1.2.3 When generated

The NCMS at BS side may use this primitive at any time to order a BS to perform multi-BS CT operation for IM for subordinate MS(s).

14.2.13.1.2.4 Effect of receipt

The BS shall generate the required operation related to configure multi-BS CT operation, e.g., Multi-BS CT operational mode set/update, Multi-BS CT set update, anchor BS update, Temp BSID update for IM.

14.2.13.2 C-IM-RSP

This primitive is used by the IEEE 802.16 entity in response to the C-IM-REQ primitive. The Action_Types for this primitive are listed in the following table.

| Action_Type | Description |
|---------------------|--|
| IM RM Configuration | Configuration procedure between BS and NCMS on resource management for IM. |
| IM CT Configuration | Configuration procedure between BS and NCMS on Multi-BS CT for IM. |

14.2.13.2.1 C-IM-RSP (Action_Type = IM_RM_Configuration)

14.2.13.2.1.1 Function

This primitive is generated by the BS to provide information to the NCMS in response to C-IM-REQ message from the NCMS.

14.2.13.2.1.2 Semantics

C-IM-RSP

```
(
  Operation_Type: Action,
  Action_Type: IM_RM_Configure,
  Destination: NCMS,
  Attribute_List:
    Response Type,
    Response Result,
    Result Reason,
    Re-request Time,
    N_PERMUTATION_ZONES,
    List of Configuration Attributes:
      (
        N_PERMUTATION_ZONES,
        for(i=0, i<N_PERMUTATION_ZONES; i++)
          (
            Permutation scheme,
            Permutation Zone Subchannel Bitmap,
            Use All SC,
            DL_PermBase,
            PRBS_ID,
            AMC type,
            OFDMA Symbol Offset,
            Number of OFDMA Symbols,
            Subchannel offset,
```

```

1           Number of Subchannels,
2           Tx Power,
3           List of Resource Usage Report Attributes:
4           (
5             Available Radio Resource,
6             Radio Resource Fluctuation
7           )
8         )
9       )
10      )
11     )
12    List of PHY Report Attributes:
13    (
14      MS MAC Address,
15      Downlink Physical Service Level,
16      Downlink RSSI mean,
17      Downlink RSSI standard deviation,
18      Downlink CINR mean,
19      Downlink CINR standard deviation,
20      Uplink Physical Service Level,
21      Uplink RSSI mean,
22      Uplink RSSI standard deviation,
23      Uplink CINR mean,
24      Uplink CINR standard deviation
25    )
26  )
27 )
28 )
29 )
30 )

```

Response Type

Type of report profiles:

- Partitioning configuration complete
- Resource Usage Report
- PHY Report

Response Result

Indicates the result of the operation indicated by the Response Type parameter included in the received C-IM-REQ primitives. This parameter may include “success”, “failure”, or “re-request”

Result Reason

Indicates a reason for “failure” or “re-request.” This parameter is included in this primitive only when the “Response Result” in this primitive is set to “failure” or “re-request”

Re-request Time

Indicates a time to re-request the C-IM-REQ. This parameter may be included in this primitive only when the “Response Result” in this primitive is set to “re-request”

When Response Type is set to “Partitioning configuration complete” or “Resource Usage Report” and Response Result is set to “success”, following attribute lists are valid:

N_PERMUTATION_ZONES

Number of radio frame subsections for which the resource partition will be indicated. A value of 1 indicates that the entire DL and UL radio subframe is considered to be a single permutation zone each.

Permutation scheme

Denotes permutation scheme used in the current permutation zone. The following types are possible:

- DL PUSC permutation
- DL FUSC permutation
- DL Optional FUSC permutation

- 1 - DL AMC
- 2 - DL TUSC1
- 3 - DL TUSC2
- 4 - UL PUSC
- 5 - UL AMC

7 **OFDMA Symbol offset**

8 Denotes the start of the current permutation zone in number of OFDMA symbols (counting
9 from the frame preamble and starting from 0)

10
11
12 When Response Type is set to “Partitioning configuration complete”, following attribute lists are
13 valid:

14 **Permutation Zone Subchannel Bitmap**

15 Indicates the subchannels available for transmission in the current permutation zone

16 **Use All SC**

17
18 When set, this field indicates transmission on all available subchannels. For FUSC
19 permutation, transmission is always on all subchannels.

20 **DL_PermBase**

21 DL Permutation base for the specified DL zone. DL_PermBase field shall be set to the 5
22 LSBs of IDcell as indicated by the frame preamble.

23 **PRBS_ID**

24 Values: 0..2. Refer to 8.4.9.4.1.

25 **AMC type**

26 Indicates the AMC type in case permutation type = 0b11, otherwise shall be set to 0.
27 AMC type (NxM = N bins by M symbols):

- 28 - 1x6
- 29 - 2x3
- 30 - 3x2

31 Note that only 2x3 band AMC subchannel type (AMC Type = 0b01) is supported by MS

32 **Number of OFDMA Symbols**

33 Denotes the number of OFDMA symbols used in the current permutation zone.

34 **Subchannel offset**

35 Denotes the start of the current zone in number of OFDMA subchannels

36 **Number of Subchannels**

37 Denotes the number of OFDMA subchannels used in the current permutation zone.

38 **Tx Power**

39 Denotes the maximum transmit power used in the current permutation zone (in dBm).

40
41
42 When Response Type is set to “Resource Usage Report”, following attribute lists are valid:

43 **Available Radio Resource**

44 Percentage of reported average available subchannels and symbols resources (“slots”) per
45 frame. If N_PERMUTATION_ZONES > 1, the indicator covers a permutation zone instead
46 of the entire DL or UL radio subframe.

47 **Radio Resource Fluctuation**

48 Radio Resource Fluctuation is used to indicate the degree of fluctuation in DL and UL
49 channel data traffic throughputs. If N_PERMUTATION_ZONES > 1, the indicator covers a
50 permutation zone instead of the radio frame. When Radio Resource Fluctuation is set to 0, it
51 implies that the DL and UL data traffic is constant in data throughput. Hence, there is no
52 fluctuation in Available Radio Resource. When Radio Resource Fluctuation is set to
53 maximum value 255, the data traffic is very volatile in nature, which makes the Available
54 Radio Resource unpredictable. The Radio Resource Fluctuation for all traffic models should
55 be in the range of 0 to 255.

56
57
58 When Indication Type is set to “PHY report” and Response Result is set to “success”, following
59 attribute lists are valid:

MS MAC Address

48-bit unique identifier of the MS. Only valid when the report type is for “report the link level quality for a specific MS”

Downlink Physical Service Level

Channel rate available for the MS calculated as a multiple of 1/32 of nominal bandwidth in the correspondent direction assuming 1 bit/Hz. For example, if DL channel bandwidth is 10 MHz, value PSL=4 means $4 \times 1/32 \times 10 \text{ Mbps} = 1.25 \text{ Mbps}$. 1 PSL 96 (Number of subchannels in different OFDMA modes is multiple of 16 or 32; highest modulation (QAM64) provides 3 bits/Hz)

Downlink RSSI mean

As specified in 8.1.9.

Downlink RSSI standard deviation

As specified in 8.1.9.

Downlink CINR mean

As specified in 8.1.9.

Downlink CINR standard deviation

As specified in 8.1.9.

Uplink Physical Service Level

Channel rate available for the MS calculated as a multiple of 1/32 of nominal bandwidth in the correspondent direction assuming 1 bit/Hz. (see definition of Downlink Physical Service Level)

Uplink RSSI mean

As specified in 8.1.9.

Uplink RSSI standard deviation

As specified in 8.1.9.

Uplink CINRmean

As specified in 8.1.9.

Uplink CINR standard deviation

As specified in 8.1.9.

14.2.13.2.1.3 When generated

This primitive is generated by the BS to notify the NCMS of C-IM-REQ contents received from the NCMS.

14.2.13.2.1.4 Effect of receipt

The NCMS may use the received C-IM-RSP contents for any purpose, e.g., resource partitioning for IM.

14.2.13.2.2 C-IM-RSP (Action_Type = IM_CT_Configuration)**14.2.13.2.2.1 Function**

This primitive is generated by the BS to provide information to the NCMS in response to C-IM-REQ message from the NCMS.

14.2.13.2.2.2 Semantics**C-IM-RSP**

(
 Operation_Type: Action,
 Action_Type: IM_CT_Configure,
 Destination: NCMS,

1 Attribute_List:
 2 Response Type,
 3 Update Type,
 4 Update Result,
 5 Result Reason,
 6 Re-request Time,
 7 Multi-BS CT_ID,
 8 Anchor Temp BSID,
 9 N_Temp_ID,
 10 for all BSs in the Multi-BS CT set:
 11 Temp BSID,
 12 N_CID
 13 for all connection in the Multi-BS CT set:
 14 CID
 15 list of PHY Report Attributes:
 16 (
 17 MS MAC Address,
 18 list of PHY Report of the MS Attributes:
 19 (
 20 Temp BSID for PHY report,
 21 Downlink Physical Service Level,
 22 Downlink RSSI mean,
 23 Downlink RSSI standard deviation,
 24 Downlink CINR mean,
 25 Downlink CINR standard deviation,
 26 Uplink Physical Service Level,
 27 Uplink RSSI mean,
 28 Uplink RSSI standard deviation,
 29 Uplink CINR mean,
 30 Uplink CINR standard deviation,
 31 Restricted PMI
 32)
 33 Recommended PMI
 34)
 35)
 36)
 37)
 38)
 39)
 40)
 41)
 42)
 43)
 44)
 45)
 46)
 47)
 48)
 49)
 50)
 51)
 52)
 53)
 54)
 55)
 56)
 57)
 58)
 59)
 60)
 61)
 62)
 63)
 64)
 65)
 66)
 67)
 68)
 69)
 70)
 71)
 72)
 73)
 74)
 75)
 76)
 77)
 78)
 79)
 80)
 81)
 82)
 83)
 84)
 85)
 86)
 87)
 88)
 89)
 90)
 91)
 92)
 93)
 94)
 95)
 96)
 97)
 98)
 99)
 100)
 101)
 102)
 103)
 104)
 105)
 106)
 107)
 108)
 109)
 110)
 111)
 112)
 113)
 114)
 115)
 116)
 117)
 118)
 119)
 120)
 121)
 122)
 123)
 124)
 125)
 126)
 127)
 128)
 129)
 130)
 131)
 132)
 133)
 134)
 135)
 136)
 137)
 138)
 139)
 140)
 141)
 142)
 143)
 144)
 145)
 146)
 147)
 148)
 149)
 150)
 151)
 152)
 153)
 154)
 155)
 156)
 157)
 158)
 159)
 160)
 161)
 162)
 163)
 164)
 165)
 166)
 167)
 168)
 169)
 170)
 171)
 172)
 173)
 174)
 175)
 176)
 177)
 178)
 179)
 180)
 181)
 182)
 183)
 184)
 185)
 186)
 187)
 188)
 189)
 190)
 191)
 192)
 193)
 194)
 195)
 196)
 197)
 198)
 199)
 200)
 201)
 202)
 203)
 204)
 205)
 206)
 207)
 208)
 209)
 210)
 211)
 212)
 213)
 214)
 215)
 216)
 217)
 218)
 219)
 220)
 221)
 222)
 223)
 224)
 225)
 226)
 227)
 228)
 229)
 230)
 231)
 232)
 233)
 234)
 235)
 236)
 237)
 238)
 239)
 240)
 241)
 242)
 243)
 244)
 245)
 246)
 247)
 248)
 249)
 250)
 251)
 252)
 253)
 254)
 255)
 256)
 257)
 258)
 259)
 260)
 261)
 262)
 263)
 264)
 265)
 266)
 267)
 268)
 269)
 270)
 271)
 272)
 273)
 274)
 275)
 276)
 277)
 278)
 279)
 280)
 281)
 282)
 283)
 284)
 285)
 286)
 287)
 288)
 289)
 290)
 291)
 292)
 293)
 294)
 295)
 296)
 297)
 298)
 299)
 300)
 301)
 302)
 303)
 304)
 305)
 306)
 307)
 308)
 309)
 310)
 311)
 312)
 313)
 314)
 315)
 316)
 317)
 318)
 319)
 320)
 321)
 322)
 323)
 324)
 325)
 326)
 327)
 328)
 329)
 330)
 331)
 332)
 333)
 334)
 335)
 336)
 337)
 338)
 339)
 340)
 341)
 342)
 343)
 344)
 345)
 346)
 347)
 348)
 349)
 350)
 351)
 352)
 353)
 354)
 355)
 356)
 357)
 358)
 359)
 360)
 361)
 362)
 363)
 364)
 365)
 366)
 367)
 368)
 369)
 370)
 371)
 372)
 373)
 374)
 375)
 376)
 377)
 378)
 379)
 380)
 381)
 382)
 383)
 384)
 385)
 386)
 387)
 388)
 389)
 390)
 391)
 392)
 393)
 394)
 395)
 396)
 397)
 398)
 399)
 400)
 401)
 402)
 403)
 404)
 405)
 406)
 407)
 408)
 409)
 410)
 411)
 412)
 413)
 414)
 415)
 416)
 417)
 418)
 419)
 420)
 421)
 422)
 423)
 424)
 425)
 426)
 427)
 428)
 429)
 430)
 431)
 432)
 433)
 434)
 435)
 436)
 437)
 438)
 439)
 440)
 441)
 442)
 443)
 444)
 445)
 446)
 447)
 448)
 449)
 450)
 451)
 452)
 453)
 454)
 455)
 456)
 457)
 458)
 459)
 460)
 461)
 462)
 463)
 464)
 465)
 466)
 467)
 468)
 469)
 470)
 471)
 472)
 473)
 474)
 475)
 476)
 477)
 478)
 479)
 480)
 481)
 482)
 483)
 484)
 485)
 486)
 487)
 488)
 489)
 490)
 491)
 492)
 493)
 494)
 495)
 496)
 497)
 498)
 499)
 500)
 501)
 502)
 503)
 504)
 505)
 506)
 507)
 508)
 509)
 510)
 511)
 512)
 513)
 514)
 515)
 516)
 517)
 518)
 519)
 520)
 521)
 522)
 523)
 524)
 525)
 526)
 527)
 528)
 529)
 530)
 531)
 532)
 533)
 534)
 535)
 536)
 537)
 538)
 539)
 540)
 541)
 542)
 543)
 544)
 545)
 546)
 547)
 548)
 549)
 550)
 551)
 552)
 553)
 554)
 555)
 556)
 557)
 558)
 559)
 560)
 561)
 562)
 563)
 564)
 565)
 566)
 567)
 568)
 569)
 570)
 571)
 572)
 573)
 574)
 575)
 576)
 577)
 578)
 579)
 580)
 581)
 582)
 583)
 584)
 585)
 586)
 587)
 588)
 589)
 590)
 591)
 592)
 593)
 594)
 595)
 596)
 597)
 598)
 599)
 600)
 601)
 602)
 603)
 604)
 605)
 606)
 607)
 608)
 609)
 610)
 611)
 612)
 613)
 614)
 615)
 616)
 617)
 618)
 619)
 620)
 621)
 622)
 623)
 624)
 625)
 626)
 627)
 628)
 629)
 630)
 631)
 632)
 633)
 634)
 635)
 636)
 637)
 638)
 639)
 640)
 641)
 642)
 643)
 644)
 645)
 646)
 647)
 648)
 649)
 650)
 651)
 652)
 653)
 654)
 655)
 656)
 657)
 658)
 659)
 660)
 661)
 662)
 663)
 664)
 665)
 666)
 667)
 668)
 669)
 670)
 671)
 672)
 673)
 674)
 675)
 676)
 677)
 678)
 679)
 680)
 681)
 682)
 683)
 684)
 685)
 686)
 687)
 688)
 689)
 690)
 691)
 692)
 693)
 694)
 695)
 696)
 697)
 698)
 699)
 700)
 701)
 702)
 703)
 704)
 705)
 706)
 707)
 708)
 709)
 710)
 711)
 712)
 713)
 714)
 715)
 716)
 717)
 718)
 719)
 720)
 721)
 722)
 723)
 724)
 725)
 726)
 727)
 728)
 729)
 730)
 731)
 732)
 733)
 734)
 735)
 736)
 737)
 738)
 739)
 740)
 741)
 742)
 743)
 744)
 745)
 746)
 747)
 748)
 749)
 750)
 751)
 752)
 753)
 754)
 755)
 756)
 757)
 758)
 759)
 760)
 761)
 762)
 763)
 764)
 765)
 766)
 767)
 768)
 769)
 770)
 771)
 772)
 773)
 774)
 775)
 776)
 777)
 778)
 779)
 780)
 781)
 782)
 783)
 784)
 785)
 786)
 787)
 788)
 789)
 790)
 791)
 792)
 793)
 794)
 795)
 796)
 797)
 798)
 799)
 800)
 801)
 802)
 803)
 804)
 805)
 806)
 807)
 808)
 809)
 810)
 811)
 812)
 813)
 814)
 815)
 816)
 817)
 818)
 819)
 820)
 821)
 822)
 823)
 824)
 825)
 826)
 827)
 828)
 829)
 830)
 831)
 832)
 833)
 834)
 835)
 836)
 837)
 838)
 839)
 840)
 841)
 842)
 843)
 844)
 845)
 846)
 847)
 848)
 849)
 850)
 851)
 852)
 853)
 854)
 855)
 856)
 857)
 858)
 859)
 860)
 861)
 862)
 863)
 864)
 865)
 866)
 867)
 868)
 869)
 870)
 871)
 872)
 873)
 874)
 875)
 876)
 877)
 878)
 879)
 880)
 881)
 882)
 883)
 884)
 885)
 886)
 887)
 888)
 889)
 890)
 891)
 892)
 893)
 894)
 895)
 896)
 897)
 898)
 899)
 900)
 901)
 902)
 903)
 904)
 905)
 906)
 907)
 908)
 909)
 910)
 911)
 912)
 913)
 914)
 915)
 916)
 917)
 918)
 919)
 920)
 921)
 922)
 923)
 924)
 925)
 926)
 927)
 928)
 929)
 930)
 931)
 932)
 933)
 934)
 935)
 936)
 937)
 938)
 939)
 940)
 941)
 942)
 943

Result Reason

Indicates a reason for “failure” or “re-request.” This parameter is included in this primitive only when the “Update Result” in this primitive is set to “failure” or “re-request”

Re-request Time

Indicates a time to re-request the C-IM-REQ. This parameter may be included in this primitive only when the “Update Result” in this primitive is set to “re-request”

When Update Result is set to “success”, following attributes are valid:

Multi-BS CT_ID

Indicates identifier of the Multi-BS CT.

Anchor Temp BSID

Temp BSID of the anchor BS, which is the member ID of the Multi-BS CT set.

N_Temp_ID

The counter of the Temp BSID.

Temp BSID

Member identifier of the Multi-BS CT candidate set.

N_CID

The counter of the CID.

CID

Connection identifier

When Response Type is set to “PHY Report” and Update Result is set to “success”, following attribute lists are valid:

MS MAC Address

48-bit unique identifier of the MS.

Temp BSID for PHU report

Member identifier of the Multi-BS CT set for PHY report

Downlink Physical Service Level

Channel rate available for the MS calculated as a multiple of 1/32 of nominal bandwidth in the correspondent direction assuming 1 bit/Hz. For example, if DL channel bandwidth is 10 MHz, value PSL=4 means $4 \times 1/32 \times 10 \text{ Mbps} = 1.25 \text{ Mbps}$. 1 PSL 96 (Number of subchannels in different OFDMA modes is multiple of 16 or 32; highest modulation (QAM64) provides 3 bits/Hz)

Downlink RSSI mean

As specified in 8.1.9.

Downlink RSSI standard deviation

As specified in 8.1.9.

Downlink CINR mean

As specified in 8.1.9.

Downlink CINR standard deviation

As specified in 8.1.9.

Uplink Physical Service Level

Channel rate available for the MS calculated as a multiple of 1/32 of nominal bandwidth in the correspondent direction assuming 1 bit/Hz. (see definition of Downlink Physical Service Level)

Uplink RSSI mean

As specified in 8.1.9.

Uplink RSSI standard deviation

As specified in 8.1.9.

Uplink CINRmean

As specified in 8.1.9.

Uplink CINR standard deviation

As specified in 8.1.9.

Restricted PMI

Recommended list of PMI not to precode in the BS (corresponding to the member BS whose member ID is the Temp BSID)

Recommended PMI

Recommended list of PMI to precode in the BS

14.2.13.2.2.3 When generated

This primitive is generated by the BS to notify the NCMS of C-IM-REQ contents received from the NCMS.

14.2.13.2.2.4 Effect of receipt

The NCMS may use the received C-IM-RSP contents for any purpose, e.g., Multi-BS CT decision, mode selection, and anchor BS update for IM.

14.2.13.3 C-IM-IND

This primitive is used by the IEEE 802.16 entity to notify the NCMS complete the configuration related to operation for IM and the periodic/event-triggered report, which is not the immediate response to a C-IM-REQ received from the NCMS. The Action_Types for this primitives are listed in in the following table:

| Event_Type | Description |
|-------------------|---|
| IM RM Report | Indicating the report related to resource management for IM |
| IM CT Report | Indicating the report related to Multi-BS CT for IM |
| IM CT Indication | Indicating the complete of operation related to Multi-BS CT for IM. |

14.2.13.3.1 C-IM-IND (Event_Type = IM_RM_Report)

14.2.13.3.1.1 Function

This primitive is generated by the BS to notify the NCMS about the report related to resource management for IM, which is not the immediate response to a C-IM-REQ received from the NCMS.

14.2.13.3.1.2 Semantics

C-IM-IND

```
(
  Event_Type: IM_RM_Report,
  Destination: NCMS,
  Attribute_List:
    Indication Type,
    N_PERMUTATION_ZONES
  List of Configuration Attributes:
    (
      N_PERMUTATION_ZONES,
      for(i=0, i<N_PERMUTATION_ZONES; i++)
        (
          Permutation scheme,
```

```

1      Permutation Zone Subchannel Bitmap,
2      Use All SC,
3      DL_PermBase,
4      DL_PermBase,
5      PRBS_ID,
6      AMC type,
7      OFDMA Symbol Offset,
8      Number of OFDMA Symbols,
9      Subchannel offset,
10     Number of Subchannels,
11     Tx Power,
12     List of Resource Usage Report Attributes:
13     (
14     (
15     Available Radio Resource,
16     Radio Resource Fluctuation
17     )
18     )
19     )
20     )
21     )
22     List of PHY Report Attributes:
23     (
24     MS MAC Address,
25     Downlink Physical Service Level,
26     Downlink RSSI mean,
27     Downlink RSSI standard deviation,
28     Downlink CINR mean,
29     Downlink CINR standard deviation,
30     Uplink Physical Service Level,
31     Uplink RSSI mean,
32     Uplink RSSI standard deviation,
33     Uplink CINR mean,
34     Uplink CINR standard deviation
35     )
36     )
37     )
38     )
39     )
40     )

```

Indication Type

Type of report profiles:
Resource Usage Report
PHY Report

When Indication Type is set to “Partitioning configuration complete”, following attribute lists are valid:

N_PERMUTATION_ZONES

Number of radio frame subsections for which the resource partition will be indicated. A value of 1 indicates that the entire DL and UL radio subframe is considered to be a single permutation zone each.

Permutation scheme

Denotes permutation scheme used in the current permutation zone. The following types are possible:

- DL PUSC permutation
- DL FUSC permutation
- DL Optional FUSC permutation
- DL AMC
- DL TUSC1
- DL TUSC2

1 - UL PUSC

2 - UL AMC

3 **OFDMA Symbol offset**

4 Denotes the start of the current permutation zone in number of OFDMA symbols (counting
5 from the frame preamble and starting from 0)

6
7
8 When Indication Type is set to “Partitioning configuration complete”, following attribute lists are
9 valid:

10 **Permutation Zone Subchannel Bitmap**

11 Indicates the subchannels available for transmission in the current permutation zone

12 **Use All SC**

13 When set, this field indicates transmission on all available subchannels. For FUSC
14 permutation, transmission is always on all subchannels.

15 **DL_PermBase**

16 DL Permutation base for the specified DL zone. DL_PermBase field shall be set to the 5
17 LSBs of IDcell as indicated by the frame preamble.

18 **PRBS_ID**

19 Values: 0..2. Refer to 8.4.9.4.1.

20 **AMC type**

21 Indicates the AMC type in case permutation type = 0b11, otherwise shall be set to 0.
22 AMC type (NxM = N bins by M symbols):

23 - 1x6

24 - 2x3

25 - 3x2

26 Note that only 2x3 band AMC subchannel type (AMC Type = 0b01) is supported by MS

27 **Number of OFDMA Symbols**

28 Denotes the number of OFDMA symbols used in the current permutation zone.

29 **Subchannel offset**

30 Denotes the start of the current zone in number of OFDMA subchannels

31 **Number of Subchannels**

32 Denotes the number of OFDMA subchannels used in the current permutation zone.

33 **Tx Power**

34 Denotes the maximum transmit power used in the current permutation zone (in dBm).

35
36 When Indication Type is set to “Resource Usage report”, following attribute lists are valid:

37 **Available Radio Resource**

38 Percentage of reported average available subchannels and symbols resources (“slots”) per
39 frame. If N_PERMUTATION_ZONES > 1, the indicator covers a permutation zone instead
40 of the entire DL or UL radio subframe.

41 **Radio Resource Fluctuation**

42 Radio Resource Fluctuation is used to indicate the degree of fluctuation in DL and UL
43 channel data traffic throughputs. If N_PERMUTATION_ZONES > 1, the indicator covers a
44 permutation zone instead of the radio frame. When Radio Resource Fluctuation is set to 0, it
45 implies that the DL and UL data traffic is constant in data throughput. Hence, there is no
46 fluctuation in Available Radio Resource. When Radio Resource Fluctuation is set to
47 maximum value 255, the data traffic is very volatile in nature, which makes the Available
48 Radio Resource unpredictable. The Radio Resource Fluctuation for all traffic models should
49 be in the range of 0 to 255.

50
51 When Indication Type is set to “PHY report”, following attribute lists are valid:

52 **MS MAC Address**

53 48-bit unique identifier of the MS.

54 **Downlink Physical Service Level**

1 Channel rate available for the MS calculated as a multiple of 1/32 of nominal bandwidth in
 2 the correspondent direction assuming 1 bit/Hz. For example, if DL channel bandwidth is 10
 3 MHz, value PSL=4 means $4 \times 1/32 \times 10$ Mbps = 1.25 Mbps. 1 PSL 96 (Number of
 4 subchannels in different OFDMA modes is multiple of 16 or 32; highest modulation
 5 (QAM64) provides 3 bits/Hz)
 6

7 **Downlink RSSI mean**

8 As specified in 8.1.9.

9 **Downlink RSSI standard deviation**

10 As specified in 8.1.9.

11 **Downlink CINR mean**

12 As specified in 8.1.9.

13 **Downlink CINR standard deviation**

14 As specified in 8.1.9.

15 **Uplink Physical Service Level**

16 Channel rate available for the MS calculated as a multiple of 1/32 of nominal bandwidth in
 17 the correspondent direction assuming 1 bit/Hz. (see definition of Downlink Physical Service
 18 Level)
 19

20 **Uplink RSSI mean**

21 As specified in 8.1.9.

22 **Uplink RSSI standard deviation**

23 As specified in 8.1.9.

24 **Uplink CINRmean**

25 As specified in 8.1.9.

26 **Uplink CINR standard deviation**

27 As specified in 8.1.9.
 28
 29
 30
 31
 32

33 **14.2.13.3.1.3 When generated**

34 This primitive is generated by the BS to notify the NCMS of the periodic/event-triggered report, which is
 35 not the immediate response to a C-IM-REQ received from the NCMS.
 36
 37
 38

39 **14.2.13.3.1.4 Effect of receipt**

40 Upper layer entity acquires information of resource management for IM.
 41
 42
 43
 44
 45
 46

47 **14.2.13.3.2 C-IM-IND (Event_Type = IM_CT_Report)**

48 **14.2.13.3.2.1 Function**

49 This primitive is generated by the BS to notify the NCMS about the periodic/event-triggered report related
 50 to Multi-BS CT for IM, which is not the immediate response to a C-IM-REQ received from the NCMS.
 51
 52
 53
 54

55 **14.2.13.3.2.2 Semantics**

56 **C-IM-IND**

57 (
 58

59 Event_Type: IM_CT_Report,
 60

61 Destination: NCMS,
 62

63 Attribute_List:

64 Indication Type,
 65

List of PHY Report Attributes:

```

1      (
2          MS MAC Address,
3          List of PHY Report of the MS Attributes:
4      (
5          Temp BSID for PHY report,
6          Downlink Physical Service Level,
7          Downlink RSSI mean,
8          Downlink RSSI standard deviation,
9          Downlink CINR mean,
10         Downlink CINR standard deviation,
11         Uplink Physical Service Level,
12         Uplink RSSI mean,
13         Uplink RSSI standard deviation,
14         Uplink CINR mean,
15         Uplink CINR standard deviation,
16         Restricted PMI
17     )
18     )
19     Recommended PMI
20 )
21 )
22 )
23 )
24 )
25 )

```

Indication Type

Type of report profiles:
PHY Report

When Indication Type is set to “PHY Report”, following attribute lists are valid:

MS MAC Address

48-bit unique identifier of the MS.

Temp BSID for PHY report

Member identifier of the Multi-BS CT set for PHY report

Downlink Physical Service Level

Channel rate available for the MS calculated as a multiple of 1/32 of nominal bandwidth in the correspondent direction assuming 1 bit/Hz. For example, if DL channel bandwidth is 10 MHz, value PSL=4 means $4 \times 1/32 \times 10 \text{ Mbps} = 1.25 \text{ Mbps}$. 1 PSL 96 (Number of subchannels in different OFDMA modes is multiple of 16 or 32; highest modulation (QAM64) provides 3 bits/Hz)

Downlink RSSI mean

As specified in 8.1.9.

Downlink RSSI standard deviation

As specified in 8.1.9.

Downlink CINR mean

As specified in 8.1.9.

Downlink CINR standard deviation

As specified in 8.1.9.

Uplink Physical Service Level

Channel rate available for the MS calculated as a multiple of 1/32 of nominal bandwidth in the correspondent direction assuming 1 bit/Hz. (see definition of Downlink Physical Service Level)

Uplink RSSI mean

As specified in 8.1.9.

Uplink RSSI standard deviation

As specified in 8.1.9.

Uplink CINRmean

As specified in 8.1.9.

Uplink CINR standard deviation

As specified in 8.1.9.

Restricted PMI

Recommended list of PMI not to precode in the BS (corresponding to the member BS whose member ID is the Temp BSID)

Recommended PMI

Recommended list of PMI to precode in the BS

14.2.13.3.2.3 When generated

This primitive is generated by the BS to notify the NCMS of the periodic/event-triggered report, which is not the immediate response to a C-IM-REQ received from the NCMS.

14.2.13.3.2.4 Effect of receipt

Upper layer entity acquires information of Multi-BS CT for IM.

14.2.13.3.3 C-IM-IND (Event_Type = IM_CT_Indication)**14.2.13.3.3.1 Function**

This primitive is generated by the MS to notify the NCMS about the reception of IM_CT-RSP message from the serving/anchor BS.

14.2.13.3.3.2 Semantics**C-IM-IND**

```
(
  Event_Type: IM_CT_Indication
  Destination: NCMS,
  Attribute_List:
    Operator ID,
    Indication Type,
    Anchor Temp BSID,
    N_Temp_ID,
    for all BSs in the Multi-BS CT set:
      Temp BSID,
      N_CID
    for all connection in the Multi-BS CT set:
      CID
)
```

Operator ID

Identifier of the network provider

Indication Type

Type of indication; bitmap:

- Bit 0: Anchor BS update
- Bit 1: Multi-BS CT candidate set update
- Bit 2: CID update during anchor BS update or Multi-BS CT candidate set update
- Bit 3: Temp BS ID update
- Bit 4: Trigger for Multi-BS CT

1 **Anchor Temp BSID**
2 Temp BSID of the anchor BS, which is the member ID of the Multi-BS CT set.
3 **N_Temp_ID**
4 The counter of the Temp BSID.
5 **Temp BSID**
6 Member identifier of the Multi-BS CT candidate set.
7 **N_CID**
8 The counter of the CID.
9 **CID**
10 Connection identifier
11
12
13
14

15 **14.2.13.3.3.3 When generated**

16
17
18 This primitive is generated by the MS to notify the NCMS of IM_CT-RSP contents received from the
19 serving/anchor BS.
20

21 **14.2.13.3.3.4 Effect of receipt**

22
23
24 Upper layer entity acquires information of Multi-BS CT for IM.
25
26
27
28
29
30
31
32
33
34
35
36
37
38
39
40
41
42
43
44
45
46
47
48
49
50
51
52
53
54
55
56
57
58
59
60
61
62
63
64
65

1 *Insert the following new subclause 17*
2
3
4

5 **17. Support for Multi-tier Networks**

6 7 8 **17.1 General** 9

10
11 A small BS is a base station controlled by at least one macro BS or an ASN gateway, with smaller
12 transmission power/cell size than that of the macro base station. Small BSs provide different cell coverage
13 and perform different roles according to their types. For example, a Femto BS is typically installed by a
14 subscriber in the home or SOHO to provide the access to closed or open groups of users as configured by the
15 subscriber and/or the access provider. The Femto BS is typically connected to the service provider's network
16 via one (or multiple) wired and/or wireless broadband connection (cable, DSL, WirelessMAN-OFDMA
17 systems, etc.)
18
19

20
21 Small BSs operate in licensed spectrum and may use the same or different frequency as macro BSs. Their
22 coverage may overlap with a macro BS.
23
24

25 Small BSs are intended to serve public users like an Open Subscriber Group (OSG), or to serve a Closed
26 Subscriber Group (CSG), which is a set of subscribers authorized by the small BS owner or the network ser-
27 vice provider. CSG can be modified by the service level agreement between the subscriber and the network
28 service provider.
29
30

31 **17.1.1 Small BS subscription types** 32 33 34

35 A small BS may belong to one of the following subscription types:

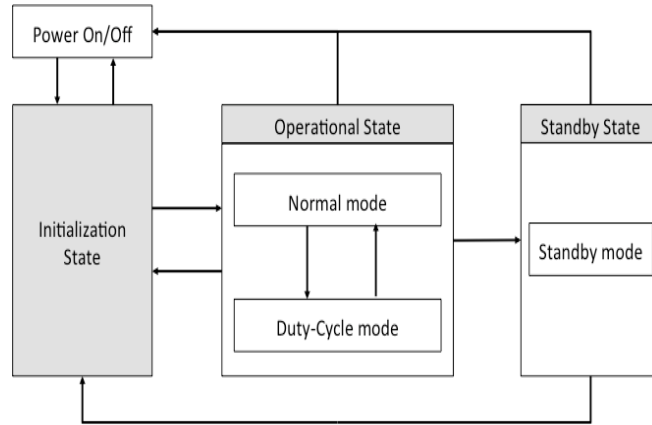
- 36
37 a) CSG-Closed small BS: A CSG-Closed small BS is accessible only to the MSs, which are in its CSG,
38 except for emergency services. MSs that are not the members of the CSG, should not try to access
39 CSG-Closed small BSs.
40
41 b) CSG-Open small BS: A CSG-Open small BS is primarily accessible to the MSs that belong to its
42 CSG, while other MSs, outside CSG, may also access such small BS, and will be served at lower pri-
43 ority. CSG-Open small BS will provide service to such MSs as long as the QoS of MS in its CSG is
44 not compromised.
45
46 c) OSG (Open Subscriber Group) small BS: An OSG small BS is accessible to any MS.
47
48

49 **17.1.2 small BS state diagram** 50 51

52 A small BS transitions through multiple states during its operation, as illustrated in Figure 17-1. On Power-
53 On, it enters the Initialization State. In this state, procedures such as configuration of radio interface
54 parameters and time/frequency synchronization should be performed. After attachment to the service
55 provider's core network, which may include synchronization to the Macro BS, it enters the Operational
56 State. In the Operational State, if the small BS becomes unattached to the service providers network or if it
57 fails to meet operational requirements (may include failed synchronization), it reverts to the Initialization
58 State.
59
60

61
62 In the Operational State, both normal mode and duty-cycle mode are supported. In duty-cycle mode, the
63 small BS reduces radio interface activity in order to reduce interference to neighbor cells. A further
64 functional description of duty-cycle mode of small BS can be found in 17.4.2.
65

1 In Standby State, only standby mode is supported. In standby mode, the small BS deactivates its air interface
 2 except backbone network interface to reduce power consumption and interference to neighbor cells. A fur-
 3 ther functional description of standby mode of small BS can be found in 17.4.3.
 4
 5
 6
 7



8
 9
 10
 11
 12
 13
 14
 15
 16
 17
 18
 19
 20
 21
 22
 23
 24
 25 **Figure 17-1—Functional overview of small BS states and operational modes**
 26
 27
 28
 29
 30
 31

32 **17.1.3 Closed subscription group identifier (CSG ID)** 33 34

35 A large number of small BSs may be configured with the same CSG, which has the same group of authorized
 36 MSs. A common identifier may be assigned to all CSG small BSs that are part of the same CSG. An MS may
 37 use this identifier for accessibility check for the CSG small BSs.
 38
 39
 40

41 The common identifier, CSG ID, is used to identify the BSs belonging to the same CSG. CSG ID shall be
 42 unique within the same operator ID. The CSG ID may be derived from the full BS ID as a part of the BS ID
 43 or may be provided by the CSG small BS through DCD message or may be pre-provisioned by the network.
 44 How to derive the CSG ID from BS ID is out of scope. The MS's CSG white list may contain the CSG ID
 45 and/or BS ID of allowable small BSs.
 46
 47
 48

49 **17.1.3.1 CSG white list** 50 51

52 The CSG white list, is a list of small BSs to which the MS is subscribed and can access. These small BSs are
 53 identified based on the common identifier defined in 17.1.3.
 54
 55

56 The MS's local white list may contain the allowable BS IDs or common identifiers of CSGs and relevant
 57 information to help derivation of the allowable BS IDs from common identifier. Besides this the whitelist
 58 may include absolute/relative location information of CSG small BS, such as GPS information and overlay
 59 Macro ABS BSID.
 60
 61

62 An MS subscribed to CSG(s) should be configured with a CSG White List for its accessibility check. The
 63 CSG white list may be provided to the MS by the service provider through the network using messaging that
 64 is outside the scope of this standard.
 65

17.1.4 Small BS initialization and network exit

17.1.4.1 Small BS initialization

The small BS shall perform small BS initialization procedures to register itself to the network and to configure itself through the backhaul connection. During the initialization procedure, the small BS obtains and configures small BS operation parameters from a network entity and negotiate the capabilities of the small BS, such as support of duty-cycle mode and standby mode with the network entity. The details of the small BS initialization procedure are out of scope of this specification.

17.1.4.2 Small BS network exit

The small BS network exit procedure is performed through the backhaul network and may be triggered either by the small BS or the other network entities. Before powering down or changing to the initialization state, the small BS may first trigger its attached MSs, if any, to handover to the neighbor cells, if feasible, or to proceed with MS network exit procedure. Which of the two procedures for MS the small BS should trigger before network exit depends on the network policy decision which is out of scope of this standard. When the backhaul link of the small BS is down or the connection with the service provider network is lost for a configurable pre-defined time, the small BS shall consider itself de-attached from the network. In such a case, the small BS shall follow the same procedure performed before power down or transition to Initialization State.

17.1.5 Network synchronization

A small BS shall be synchronized with the overlay BS network at least in all cases where interference in UL or DL can occur, where the synchronization means the aligned frame boundary, and the aligned DL / UL split in TDD systems. The network synchronization may be achieved by small BS scanning of the preamble transmitted by the Macro BSs. For this option, if the small BS can successfully detect the Macro BS preamble, it shall synchronize its downlink transmission with the received preamble signal from Macro BSs. The small BS scanning of Macro BS preamble for network synchronization may be performed before small BS activation or during the inactive interval of duty-cycle mode. The small BS may also achieve network synchronization from GPS or backhaul network (e.g., IEEE Std 1588™).

17.1.6 Network entry

The network entry procedure shall be the same as described in 6.3.9 with the exception of procedures described in this subclause.

17.1.6.1 MS network entry with small BS

An MS may prefer its subscribed CSG small BS, while other small BSs may also be chosen as candidates.

During network entry, the MS acquires the BS ID and cell type from the DCD message transmitted by the detected small BS. In addition to the BS ID and the cell type, the MS may also acquire CSGID from the DCD message. BSID or the acquired or derived CSGID is the identifier for the MS to determine whether it is authorized to access to the detected BS, and may help the MS to quickly exclude the CSG small BS to which it is not subscribed. If the MS supports CSG white-list capability, it may have BS IDs of all CSG small BSs to which the MS is subscribed and is authorized to access. If the small BS is excluded, the MS should continue the scanning until a suitable BS is detected.

17.1.6.2 Small BS reselection by the MS

When the MS performs initial network entry or network reentry with a small BS, it first performs initial

1 ranging by sending the RNG-REQ message. The MS may include one or more CSGID(s) as part of the
2 RNG-REQ message to the small BS, if one or more CSGID(s) is(are) provisioned in the MS. If the small BS
3 is a CSG small BS, it may have one or more CSGID(s) provisioned in it as well. If it is an OSG small BS,
4 then there shall be no CSGID provisioned for it.
5
6

7 If the small BS is an OSG small BS, then the small BS ignores the CSGID(s) (if sent by the MS) in the
8 RNG-REQ message and goes ahead with the next steps. If the small BS is a CSG small BS, the small BS
9 receives the RNG-REQ message and, if needed, it looks at the received CSGID(s) and checks if it matches
10 with at least one of its CSGID(s). If there is match of the CSGID, then the small BS knows that the MS is a
11 member of the small BS and goes ahead with the next steps.
12
13

14 If the received CSGID(s) from the MS does not match any of the CSGID(s) of the small BS itself and the
15 small BS is a CSG-Closed small BS, the small BS shall reject the access of the MS and abort the current
16 ranging by sending a RNG-RSP message with Ranging status TLV set to 2(abort). During initial network
17 entry, the small BS may decide to redirect the MS to another BS by sending a RNG-RSP message that
18 includes the TLV pairing of Offset frequency Adjust TLV and Preamble index override TLV, or the TLV
19 pairing of Downlink frequency override TLV and Preamble index override TLV pointing to the other BSs.
20 Since the small BS cannot be sure that the MS is not its member as the MS may not have included all the
21 CSGIDs in its white list in the RNG-REQ message, the small BS may also include its CSGID(s) in the
22 RNG-RSP message so that the MS can perform the accessibility check for the small BS.
23
24

25 If there are no CSGIDs included in the RNG-REQ message, then the normal network entry procedure as in
26 6.3.9 applies.
27

28 If the small BS has CSGID information of nearby small BSs, then it may filter the information included in
29 the RNG-RSP message for MS redirection based on the CSGID(s) provided by the MS in the RNG-REQ
30 message and only provide the OSG small BSs as well as CSG small BSs with matching CSGID(s) to the MS
31 in the RNG-RSP message. After receiving the RNG-RSP message with the instruction to move to new BSs,
32 the MS may attach to the other candidate BSs.
33
34
35
36
37

38 **17.2 Mobility management**

39 **17.2.1 Handover (HO)**

40
41
42 This subclause contains the procedures performed during HO. The HO procedures shall be the same as
43 described in 6.3.20 with the exception of procedures specified in this subclause.
44
45
46

47 **17.2.1.1 Network topology acquisition**

48 **17.2.1.1.1 Network topology advertisement**

49
50
51 A BS shall periodically broadcast the system information of the neighboring BSs using an MOB_NBR-
52 ADV message. A broadcast MOB_NBR-ADV message may include the information of Open Subscriber
53 Group (OSG) small BSs, but shall not include information of neighbor Closed Subscriber Group (CSG)
54 small BSs.
55
56
57

58 A serving BS may unicast a list of accessible neighboring small BSs through the MOB_NBR-ADV
59 message. The accessible small BSs may contain CSG-closed small BSs serving CSGs to which the MS
60 belongs to, and CSG-open small BSs. The MS may request the accessible small BS list from the BS by
61 sending the MOB_SCN-REP message.
62
63
64
65

17.2.1.1.2 MS scanning neighbor small BSs

For neighbor small BSs, an MS performs the scanning procedure as per 6.3.20.1.2 with exceptions described in this subclause. An MS may scan small BSs according to the neighbor FA information TLV included in the broadcast MOB_NBR-ADV message. In addition, an MS may scan allowed small BSs based on the CSG white list, which may include the absolute or relative location information of the CSG small BS, such as the GPS information or BSID of the overlay macro BS, respectively. Based on location information and/or speed, the MS may initiate the scanning procedure (see 6.3.20.1.2). For example, the MS may use the absolute or relative location information of the CSG BS to initiate scanning when the distance between the MS and the CSG small BS is less than a pre-configured threshold or the MS detects the overlay macro BS. Details of the threshold configuration are vendor specific and outside the scope of this specification. The MS may request an additional scanning opportunity by sending MOB_SCN-REQ including the detected preamble index and FA information. Upon reception of the MOB_SCN-REQ, the BS shall respond with an MOB_SCN-RSP, which may include a neighbor-accessible small BS list based on the preamble index and FA information.

When the MS has to scan the small BSs belonging to a CSG, the MS may provide the desired CSGID(s) in the MOB_SCN-REQ message to the serving BS. The serving BS responds with a list of BSs, addressed by full BSID belonging to the requested CSGID(s), with BS's FA, preamble index, in the MOB_SCN-RSP message.

The BS may send an unsolicited MOB_SCN-RSP for the MS to scan the small BS.

After scanning and identifying the existence of any small BSs, the MS may report FA, preamble index or BS IDs and measurement results according to the Trigger conditions included in the DCD message by sending MOB_SCN-REP. The MOB_SCN-REP may contain a neighbor request TLV. If the BS receives the MOB_SCN-REP that contains the neighbor request TLV, the BS unicast an MOB_NBR-ADV message that includes a system information of neighbor small BSs indicated by the neighbor request TLV in the MOB_SCN-REP.

17.2.1.2 HO decision

After a decision of HO, a serving BS recommends target BS list by including one or more possible target BSs in MOB_BSHO-REQ or MOB_BSHO-RSP messages. In case of macro BS only networks, serving BS criteria for recommendation of target BS may include factors such as expected MS performance at potential target BS, BS and network loading conditions, and MS QoS requirements. In case of multi-tier networks, serving BS criteria for recommendation of target BS may also include MS BS type preference, CSG membership, and MS moving speed in addition to the criteria above.

An MS may access unsubscribed CSG-Open small BS if no candidate BSs are available at the MS after scanning macro BS and accessible small BSs.

17.2.2 Idle mode

A small BS may support idle mode.

A small BS that supports idle mode shall follow the same procedure as specified in 6.3.22 for macro BSs with the exceptions given in this subclause.

A CSG-Closed BS shall not broadcast paging for a non-member MS.

An MS in Idle mode shall not attach to an unsubscribed CSG-Closed small BS.

17.3 Interference management

In multi-tier networks, a small cell overlaid by macro cell(s) may cause severe cross-tier interference to the macro cells, vice versa. A small cell may also cause cross-tier interference to macro cell(s), which are even not overlaying the small cell but adjacent to it, vice versa. In addition, a small/macro cell may generate co-tier interference to adjacent small/macro cell(s). In order to mitigate such interference among cells, mechanisms for resource management and multi-BS MIMO are provided in perspectives of interference mitigation.

17.3.1 Resource Management

The interference between small cells, and between macro cells and small cells may be mitigated by radio resource reservation and resource sharing using time-division and/or frequency-division resource management and/or downlink power control.

As a result of physical channel measurement and report by an MS, the BS reports the channel measurement to the coordinator (e.g., interference management network entity), if certain condition is met as defined in 17.3.1.3. In addition, the BS may report the traffic load. The coordinator, which receives the information such as channel measurement and traffic load, may configure the resource usage. Upon deciding the operation the resource management, management interface and procedure to perform cooperation and to manage resource cooperatively by multiple BSs shall be supported through C-SAP/M-SAP via backhaul link.

17.3.1.1 Fractional Frequency Reuse (FFR)

17.3.1.1.1 DL FFR

DL FFR allows different frequency reuse factors, different frequency partitions for each frequency reuse factor, and different transmit power levels on each frequency partition to enhance resource reuse and network throughput.

Based on the channel measurement from MS and report the result from BS to the coordinator, the coordinator may (re-)configure the partitioning information such as used and non-used subchannels, limited transmit power, and etc. If the DL resource is not partitioned currently, the corresponding zone may be partitioned using the partitioning information. Otherwise, the corresponding zone may be re-partitioned using the partitioning information. Configured partitioning information shall be exchanged through C-SAP/M-SAP via backhaul link.

When the usage of the subchannels in a DL zone is limited by a bitmap, all subcarriers including pilot subcarriers in the corresponding zones (i.e., segments in PUSC and physical bands in AMC) shall be boosted as described in 8.4.9.6 and are allocated to the segment in the DL. The bitmaps that limit subcarrier usage are “Used subchannel bitmap” in the FCH that applies to the first DL PUSC zone and to PUSC zones in which Use all SC field is set to ‘0’, “DL AMC allocated physical bands bitmap”, “TUSC1 permutation active subchannels bitmap”, and “TUSC2 permutation active subchannels bitmap” TLVs in the DCD.

When the subchannels in a DL zone are not limited by a bitmap (i.e., all subchannels bitmap is set to “1”), any subchannels in the corresponding zones are allowed to allocate resource to MSs. In addition, PUSC zones with all SC field is set to ‘1’ may be used to allocate resource to MSs. In the corresponding zone, the data to transmit to MSs shall be defined by the DL-MAP IE and/or “DL region definition” TLV in DCD.

In a DL frequency partition zone, the corresponding zone may also be further time-division multiplexed as defined in 17.3.1.2 and/or frequency-division multiplexed as defined earlier in this subclause.

17.3.1.1.2 UL FFR

UL FFR allows different frequency reuse factors, different frequency partitions for each frequency reuse factor, and different maximum per-tone power levels on each frequency partition to enhance resource reuse and network throughput.

When the usage of the subchannels in a UL zone is limited by a bitmap, all subcarriers including pilot subcarriers in the corresponding zones (i.e., segments in PUSC and physical bands in AMC) shall be used to allocate to the segment in the UL. The bitmaps that limit subcarrier usage are “UL allocated subchannels bitmap”, “Optional permutation UL Allocated subchannels bitmap”, and “UL AMC Allocated physical bands bitmap” TLVs in the UCD. The partitioning information (including allowed subchannels bitmap and etc.) shall be exchanged through C-SAP/M-SAP via backhaul link.

When the usage of the subchannels in a UL zone is not limited by a bitmap, any subchannels are allowed to allocate bandwidth to MSs. The partitioning information (including used/not used subchannels, limited per-tone power level, and etc.) shall be exchanged through C-SAP/M-SAP via backhaul link.

In a UL frequency partition zone, the corresponding zone may also be further time-division multiplexed as defined in 17.3.1.2 and/or frequency-division multiplexed as defined earlier in this subclause.

17.3.1.2 Time-Division Multiplexed Resource Scheduling

Based on the channel measurement from MS and report the result from BS to the coordinator, the coordinator may (re-)configure the partitioning information such as used and non-used OFDMA symbols for zone boundary. If the DL resource is not partitioned currently, the corresponding zone may be partitioned using the partitioning information. Otherwise, the corresponding zone may be re-partitioned using the partitioning information. Configured partitioning information shall be exchanged through C-SAP/M-SAP via backhaul link.

When the usage of the OFDMA symbols in a DL/UL frame is limited, as a result of coordination among BSs, the corresponding partition is blocked to allocate resource to subordinate MSs. A DL and UL Zone Switch IE or the start of the DL and UL frame shall indicate the start of DL and UL partition, respectively. The DL and UL corresponding partition shall span continuous OFDMA symbols until terminated by another Zone Switch IE or the end of the DL and UL frame, respectively.

In a TDM partitioned zone, the corresponding zone may also be further time-division multiplexed as defined in this subclause and/or frequency-division multiplexed as defined in 17.3.1.1.

A DL frame or a DL subframe is classified to resource allocation region, empty region and zero energy region, where the allocated portion to be occupied by data traffic and control signal such as FCH, MAP messages is referred to resource allocation region, the portion to be empty is referred to empty region, and a part or whole part of empty region is referred to zero energy region in which a BS does not transmit any signal.

The resource allocation region of a frame may include multiple zones (such as PUSC, FUSC, Optional FUSC, AMC, TUSC1, TUSC2, etc.). The empty region has no any data traffic or control signal, but it may have the subcarriers to be modulated as reference signal such as common pilot to be used as a DL channel measurement for MSs. The BS may be requested for the transmission power of radio signal such as common pilot in empty region.

In zero energy region, a BS shall not allocate, modulate and transmit any radio signal such as data subcarrier and common pilot, and then it may turn off the power of BS transceiver devices as a silent interval in DL transmission. The DL-MAP IE with DIUC = 13 as gap.safety zone indicates that the zero energy region is assigned in a DL frame or a DL subframe. The MS shall ignore any received signal and shall not perform measurement in this region.

1 A DL frame or a DL subframe can be normally configured to the resource allocation region and the empty
 2 region. In some cases, a DL frame or a DL subframe may be configured to different combinations with three
 3 regions of resource allocation region, empty region and zero energy region or two regions of resource allo-
 4 cation region and zero energy region. For interference mitigation of DL, the BS may make the best use of
 5 empty region to zero energy region. For example, if a BS has not heavily loaded with data traffic, it may
 6 convert empty regions to the zero energy region in next frames for the interference mitigation. Both the
 7 resource allocation region and the zero energy region can be assigned to one region or more in a DL frame or
 8 a DL subframe.
 9

10
 11 For interference mitigation, one or more different regions may be scheduled among BSs. This is intended to
 12 provide reduced interference zones within the coverage area of a BS. The reduced interference zones are
 13 useful when the BS interfere with other BS. In such situations, the reduced interference zones may be used
 14 by the interfered BS to transmit data to MS that are registered with it, which would otherwise suffer from
 15 interference.
 16

17
 18 If a BS suitably arranges the resource allocation region and the zero energy region by cooperation among
 19 neighbor BSs, it is possible to enhance the interference mitigation. Also the BS can additionally get the
 20 effect of the BS transmission power saving in DL.
 21
 22

23
 24 If it is needed to arrange the regions in a frame in order to interference mitigation among BSs in multi-tier
 25 networks or enhance BS power saving, the cooperative procedures such as region configuration are per-
 26 formed between the BS and NCMS.
 27
 28

29 **17.3.1.3 Trigger Conditions**

30
 31 A serving BS may send the BS_ID(s) to a subordinate MS and request the MS to scan the corresponding
 32 BS(s). The MS scans and reports the channel measurement result to the serving BS as defined in 6.3.16 and
 33 6.3.20.1.2. Based on the channel measurement report from the MS, the serving BS and its interfering BS(s)
 34 may perform resource management for interference mitigation, as a result of cooperation.
 35

36 To decide to configure the radio resource as defined in 17.3.1.1 and 16.3.1.2, the operation procedure of the
 37 resource management follows the steps below:
 38
 39

40
 41 a) PHY channel quality of serving BS and neighbor BS(s) is measured by the MS. Based on the request
 42 from the BS, the MS measures the physical channel quality as defined in 6.3.16 for the downlink CINR
 43 operation, and 6.3.20.1.2 for the scanning procedure.
 44

45 b) The measurement result of the physical channel quality is gathered by the serving BS. The serving
 46 BS forwards the gathered information (such as CINR, RSSI, BSID) to the IM coordinator through C-
 47 SAP/M-SAP via backhaul link. In addition, the serving BS reports the resource usage, including:
 48

- 49 - Available Radio Resource: average available subchannels and symbol resources (“slots”) per
 50 frame expressed as a percentage.
- 51 - Radio Resource Fluctuation: Degree of fluctuation in DL and UL channel data traffic throughput.
 52 When it is set to 0, it implies that the DL and UL data traffic is constant in data throughput.
 53

54
 55 The resource usage is reported if any of the following conditions are met:

- 56 - The C-IM-REQ primitive is received from the NCMS (when Report Period (P) is not included or
 57 set to 0)
- 58 - The Report Period (P) expires
- 59 - The Available Radio Resource in the serving BS increases by more than its Report Threshold
 60 value or decreases by less than its Report Threshold value.
- 61 - The Radio Resource Fluctuation in the serving BS increases by more than its Report Threshold
 62 value or decreases by less than its Report Threshold value.
- 63 - The Available Radio Resource in the serving BS increases by more than its Report Threshold
 64 value or decreases by less than its Report Threshold value.
- 65 - The Radio Resource Fluctuation in the serving BS increases by more than its Report Threshold
 value or decreases by less than its Report Threshold value.

1 value or decreases by less than its Report Threshold value

2
3 - The value of the resource usage is greater or less than the Absolute Report High Threshold value
4 and the Absolute Report Low Threshold value.
5

6
7 c) Multi-BS cooperation is performed between serving BS and neighbor BS(s), including IM
8 coordinator through C-SAP/M-SAP via backhaul link. The configuration of the radio resource is
9 determined by the IM coordinator based on the reported information. When “available radio resource”
10 of the serving BS is less than pre-defined threshold, radio resource management may be initiated.
11 During the cooperation, the IM coordinator may request to a BS to configure radio resource. In
12 response to the request from the IM coordinator, the BS accepts the request, rejects with the reason
13 (e.g., heavy traffic load), or requests to delay (re-request) the configuration. If the BS rejects the
14 request from the IM coordinator, the IM coordinator shall retransmit C-IM-REQ primitive with a new
15 radio resource information. If the BS requests to delay the configuration, the IM coordinator shall
16 retransmit C-IM-REQ primitive when the Re-request Time timer expires.
17
18

19 d) Those BSs (serving BS and neighbor BS(s)) perform the radio resource configuration.
20
21
22

23 **17.3.2 Multi-BS cooperative transmission**

24
25
26 Multi-BS cooperative transmission(CT) including Multi-BS diversity and Multi-BS MIMO techniques
27 improves sector throughput and cell-edge throughput through multi-BS cooperative signaling. Multi-BS
28 MIMO includes DL single-BS precoding with multi-BS coordination and DL/UL multi-BS joint processing.
29
30

31 **17.3.2.1 DL Multi-BS cooperative transmission**

32
33
34 To ensure proper cooperative transmission(CT), each BS capable of providing CT may belong to a certain
35 CT candidate set. Within the cooperative transmission candidate set, a set of BS is selected as a cooperative
36 transmission set and a common zone is assigned for those BSs operating cooperative transmission, where
37 those BSs may transmit the same data to certain MS(s), as a result of coordination among BSs. The common
38 zone used by the BSs shall be aligned over the same time-frequency radio resource region. For the Multi-BS
39 CT, the Multi-BS support is indicated in the SBC-REQ/RSP message exchange.
40
41

42 For the MS, which is not capable of Multi-BS CT, the MS and BS capable of providing Multi-BS CT perform
43 the following stages:
44

- 45 - Multi-BS CT Decision: A Multi-BS CT begins with a decision for an MS to receive from multiple
46 BSs at the same time.
47
- 48 - Multi-BS CT Set Selection/Update: An MS may scan the neighbor BS and report the channel mea-
49 surement result to the BS as defined in 6.3.16 and 6.3.20.1.2. Based on the threshold from the IM
50 coordinator, the BS includes neighbor BSs as a Multi-BS CT candidate set and reports those BS lists
51 to the IM coordinator. Within the CT candidate set, the IM coordinator selects a set of BS as a CT
52 set, and a common zone is assigned for those BSs operating CT, where those BSs may transmit the
53 same data to certain MS(s), as a result of coordination among BSs. The common zone used by the
54 BSs shall be aligned over the same time-frequency radio resource region.
55
56
- 57 - Multi-BS CT Anchor BS Selection/Update: An MS is required to continuously monitor the signal
58 strength of the BSs that are included in the Multi-BS CT set. The MS shall select one BS as a part of
59 HO as defined in 6.3.20 as the serving BS from the Multi-BS CT set and the serving BS is responsi-
60 ble for the Multi-BS CT Anchor BS.
61
62
63
64
65

With the Multi-BS CT supported, the MS capable of Multi-BS CT shall perform the following stages:

- 1 - Multi-BS CT Decision: A Multi-BS CT begins with a decision for an MS to receive from multiple
2 BSs at the same time.
- 3
- 4 - Multi-BS CT Set Selection/Update: An MS may scan the neighbor BS and select BSs that are suit-
5 able to be included in the Multi-BS CT candidate set. The MS shall report the selected BSs and the
6 Multi-BS CT candidate set update procedure shall be performed by the cooperation among BSs.
7 Within the CT candidate set, a set of BS is selected as a CT set and a common zone is assigned for
8 those BSs operating cooperative transmission, where those BSs may transmit the same data to cer-
9 tain MS(s), as a result of coordination among BSs. The common zone used by the BSs shall be
10 aligned over the same time-frequency radio resource region.
- 11
- 12 - Multi-BS CT Anchor BS Selection/Update: An MS is required to continuously monitor the signal
13 strength of the BSs that are included in the Multi-BS CT set. The MS shall select one BS from its
14 current Multi-BS CT set to be the anchor BS and reports the selected anchor BS.
15
- 16

17
18 For Multi-BS CT, the transmitting antennas simultaneously transmit the same data using the same time-
19 frequency resource, as a result of coordination among BSs. The total N antennas of Multi-BS CT BSs
20 constitute an antenna pool. The coordinator for CT shall perform antenna selection/grouping from the
21 antenna pool. The selected antennas are used to transmit data from multi-BS that operates in Multi-BS CT.
22

23 When a BS receives the result of physical channel measurement from an MS, the BS reports the channel
24 measurement results to the coordinator (e.g., interference management network entity). The coordinator,
25 which receives the channel measurement results, may (re-)configure a cooperative transmission. Upon
26 deciding the operation the cooperation transmission, management interface and procedure to perform
27 cooperation and to transmit the same data to the same MS cooperatively by multiple BSs shall be supported
28 through C-SAP/M-SAP via backhaul link.
29

30 31 32 **17.3.2.1.1 Multi-BS CT decision and initiation**

33
34 For an MS and a BS that support Multi-BS CT, the MS and the BS shall maintain a list of BSs that are
35 involved in Multi-BS CT with the MS. The list is called the Multi-BS candidate set. Among the BSs in the
36 Multi-BS candidate set, a Multi-BS CT anchor BS is defined. When operating in Multi-BS CT, the MS
37 communicates with all BSs in the Multi-BS CT set for DL messages and traffic.
38

39 The MS during the Multi-BS CT monitors only the anchor BS for DL control information and DL broadcast
40 messages. In this case, the DL-MAP and UL-MAP transmitted by the anchor BS may contain the burst
41 allocation information for the non-anchor BS in the Multi-BS CT set.
42

43 Multi-BS CT begins with a decision for an MS to transmit messages and traffic from multiple BSs at the
44 same time interval. For Multi-BS CT, two or more BSs provide synchronized transmission of MS DL data so
45 that Multi-BS diversity, single-BS precoding with multi-BS coordination, or multi-BS joint processing can
46 be performed by the MS.
47

48 The BS supporting Multi-BS CT shall broadcast the DCD message that includes the CT_Add Threshold and
49 CT_Delete Threshold. These thresholds may be used by an MS to determine if IM_CT-REQ should be sent.
50 To measure the physical channel and manage by the coordinator, Temp BSID is assigned to each BS in the
51 Multi-BS CT candidate set. When long-term CINR of an BS in the current Multi-BS CT candidate set is less
52 than CT_Delete Threshold, the MS shall send the corresponding Temp BSID in the IM_CT-REQ to requires
53 dropping this BS from the Multi-BS CT candidate set; when long-term CINR of a neighbor BS is higher
54 than CT_Add Threshold, the MS shall sent an IM_CT-REQ to require adding this neighbor BS to the Multi-
55 BS CT candidate set. In addition, the physical channel measurement of BSs in the current Multi-BS
56 candidate set are reported using IM_CT-REQ to maintain Multi-BS candidate set.
57

58 If an MS is not capable of Multi-BS CT, the MS may measure the physical channel of current serving/anchor
59 BS and its neighbor BS(s) and report the channel measurement result to the BS as defined in 6.3.16 and
60
61
62
63
64
65

1 6.3.20.1.2.

2
3 When a BS receives the report of channel measurement from the MS, the BS reports the BS lists including
4 channel measurement result to the IM coordinator to (re-)group (add to or delete from) the Multi-BS CT
5 candidate set.
6

7
8 The decision to update the Multi-BS CT candidate set may begin with a notification by the MS through the
9 IM_CT-REQ management message or by the BS through the IM_CT-RSP management message. The
10 process of anchor BS update may begin with IM-CT-REQ message from MS or IM-CT-RSP from the anchor
11 BS. In addition, decision to update is performed in the IM coordinator without any notification by the MS or
12 by the BS.
13

14
15 The BSs involving the Multi-BS CT with an MS shall use the same set of CIDs for the connections that are
16 established with the MS. The BS may assign a new set of CIDs to the MS during Multi-BS CT candidate set
17 update through IM_CT-REQ message and IM_CT-RSP message. The BS may also assign a new set of CID
18 to the MS through DSA procedure.
19

20
21 There are several conditions that are required to enable Multi-BS CT between MS and a group of BSs as
22 follows:
23

- 24
- 25 - The BSs involving in the Multi-BS CT are synchronized based on a common time source. The
26 frames sent by the BSs involving in the Multi-BS CT at a give time arrive at the MS within the pre-
27 fix interval.
28
 - 29 - BSs involving in the Multi-BS CT have synchronized frame structure
30
 - 31 - BSs involving in the Multi-BS CT have the same frequency assignment
32
 - 33 - BSs involving in the Multi-BS CT shall use the same set of CIDs for the connections that are estab-
34 lished with the MS.
35
 - 36 - The same MAC/PHY PDUs shall be sent by all the BSs involving in the Multi-BS CT to the MS.
37

38
39 **17.3.2.1.2 Multi-BS CT set management**
40

41
42 The MS may evaluate the possible list of BSs through the received MOB_NBR-ADV message, and
43 previously performed signal strength measurement, propagation delay measurement, scanning, ranging, and
44 association activity. When SCN-REP or IM_CT-REQ is sent by an MS, the BS may report the possible list
45 of BSs including the measured signal strength to the IM coordinator if the conditions are met as follows:
46

- 47
- 48 - If the BS receives SCN-REP or IM_CT-REQ from an MS
49
 - 50 - If the receive result is different from previous value, which increases or decreases by more than that
51 of the threshold.
52
 - 53 - If the timer expires (periodic report)
54

55 The IM coordinator decides/updates the Multi-BS CT candidate set based on the report result from the BS.
56 Then, the IM coordinator announces the BSs belong to the Multi-BS CT candidate set. The Multi-BS CT set
57 is a subset of the listed in the Multi-BS CT candidate set.
58

59
60 When IM_CT-REQ is sent by an MS, the IM_CT-REQ may include a possible list of BSs recommended to
61 be included in the MS's Multi-BS CT set. When IM_CT-RSP is sent by the anchor BS or BSs in the MS's
62 current Multi-BS CT candidate set, the BSs may provide a list of recommended BSs for incorporation into
63 the MS's Multi-BS CT candidate set. The Multi-BS CT set is a subset of the listed in the Multi-BS CT can-
64 didate set, which is transmitted in the IM_CT-RSP message.
65

1 **17.3.2.1.3 Multi-BS CT Anchor BS management**

2
3
4 When the Multi-BS CT begins, current servingBS is defined as the Multi-BS CT Anchor BS. During the
5 Multi-BS CT operation, the preferred anchor BSs shall be within the current Multi-BS CT set of the MS.
6 The MS may select the preferred anchor BS through the previously performed signal strength measurement.
7 The BS received the result of the signal strength measurement reports it to the IM coordinator (e.g., IM net-
8 work entity). The IM coordinator, which receives the signal strength measurement result, may select a BS as
9 the Multi-BS CT Anchor BS of the MS and transmits the information of the BS to the current Multi-BS CT
10 candidate set.
11

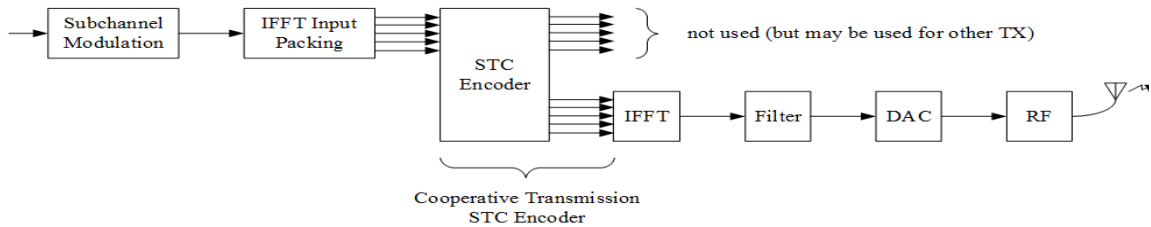
12
13 **17.3.2.1.4 STC encoding/decoding for Multi-BS CT**

14
15
16 In the Multi-BS CT, STC-encoded signals are transmitted across the transmitting antennas using the same
17 time-frequency resource (refer to 8.4.8 for a list of valid STCs). Figure 17-2 is an example of local STC
18 encoding at BS performing Multi-BS CT, where the STC Encoder is identical to the encoder in Figure 8-90
19 of 8.4.8.1. The unselected antennas are not used for the transmission, but they may be used for other
20 transmission.
21

22
23 In a STC DL Zone with STC not set to “0b00”, the BS operated in Multi-BC CT shall perform STC
24 encoding locally by using the STC Matrix as defined by STC_DL_Zone_IE (or MIMO DL Basic IE or
25 MIMO DL Enhanced IE or HARQ MAP) for its assigned antenna number(s), configured by the IM
26 coordinator. The pilot patterns for each BS antenna shall be based on the permutation, the number of
27 antennas as indicated in STC_DL_Zone_IE, and the antenna assignment. The antenna assignment shall be
28 effective until the next configuration from the IM coordinator.
29
30

31 An MS shall demodulate signal in the same procedure as define in 8.4.8if an MS does not receive
32 MIMO_in_Another_BS_IE() or Macro_MIMO_DL_Basic_IE(). The same data are transmitted from
33 multiple BSs in the same data regions, and then the MS performs RF or diversity combining.
34
35

36 MS shall perform soft data combining when it receives MIMO_in_Another_BS_IE(). In this case, the same
37 data are transmitted in the same or different data region.
38
39
40



51 **Figure 17-2—A logical block example of local STC encoding for Multi-BS CT at BS**

52
53
54
55
56
57 **17.3.2.1.5 Multi-BS diversity**

58
59
60 A DL zone may be a coordinated zone between the serving BS and its neighbor BSs that have the same zone
61 boundary, the same zone permutation type e.g., PUSC, STC PUSC, AMC, and STC AMC, and the same
62 values for the parameters, Use All SC and Dedicated Pilots, defined by STC DL Zone IE as shown in Table
63 8-123. In the coordinated zone, an MS receives a data transmission from multiple BSs in the same data
64 regions or different data regions.
65

17.3.2.1.6 DL single-BS precoding with multi-BS coordination

When DL single-BS precoding with multi-BS coordination is enabled, interference from adjacent BSs is mitigated by coordinating the precoders applied in the adjacent BSs.

Two types of single-BS precoding with multi-BS coordination may be supported. One is interference nulling and the other is PMI coordination, which are supported by channel feedback as defined in 17.3.2.1.8.

Single-BS precoding with multi-BS coordination may be enabled by the BS for one or several MSs, the inter-cell interference can be mitigated by coordinating the precoders applied in neighbor cells via higher layer signaling, based on the feedback from MSs to their respective serving BSs.

Inter-cell interference nulling can be done using overhearing neighboring cell's sounding signal to generate the precoding matrix that nulls the interference to neighboring cells.

DL single-BS precoding with multi-BS coordination may be performed as follows:

a) PHY channel quality of serving BS and neighbor BS(s) is measured using IM Multi-BS CT PHY Channel Measurement Request/Response (IM_CT-CH-REQ/RSP) message (see 6.3.2.3.105, 6.3.2.3.106) and/or using the sounding based estimation 17.3.2.1.9, and the result of the measurement is gathered. Restricted (and/or recommended) PMI may be included in the IM_CT-CH-RSP or be estimated in the BS based on the UL sounding signals from the MS. Then, the BS decides to forward the gathered info. (as a part of cooperation) and/or schedule the MS based on the result of the measurement on the downlink channel.

b) Multi-BS cooperation is performed to avoid interfering other cells among serving BS and neighbor BS(s), including IM coordinator (controller) through C-SAP/M-SAP via backhaul link. The cooperation for single-BS precoding is triggered, if the certain condition is met as defined in 17.3.2.1.10. Service Primitives (e.g., C-IM-REQ/RSP in 14.2.13.1 and 14.2.13.2) are exchanged among those BSs and IM controller, including following steps:

1) IM controller may request a BS to report the gathered result of the PHY channel measurement, including feedback type, expected information to report (e.g., channel info., PMI), and report condition.

2) In response to the request, a BS reports the corresponding measured (gathered) information of physical channel state information including PMI list for PMI coordination if the report condition is met. In addition, resource usage information may also be reported to assist coordination.

3) As a result of coordination, information (e.g., PMI and resource) to perform single-BS precoding is exchanged.

c) Each BS performs single-BS precoding. A BS performs STC encoding locally by using the STC matrix as defined by STC_DL_Zone_IE (or MIMO DL Basic IE or MIMO DL Enhanced IE or HARQ MAP) for its single-BS precoding, configured by the IM coordinator. When the BS performs STC encoding, the BS precodes with the recommended PMI, and/or without the restricted PMI for a certain amount of time till next configuration. An MS perform received the precoded data defined the DL control, and the MS shall demodulate signal in the same procedure as defined in 8.4.8. In addition, BS may resolve conflicted request (due to several restricted PMIs) using adaptive precoding between MS and BS. For example, a BS schedules whole frequency bands without the restricted PMI, and a BS does not schedule (or schedule with low priority) the MS reporting the restricted PMI.

17.3.2.1.7 DL multi-BS joint processing

When DL multi-BS joint processing is enabled, radio resource allocation, data mapping, and pilot pattern allocation shall be aligned among coordinating BSs. The same data packet is transmitted by the coordinating BSs on the same time and frequency resources.

Two types of multi-BS joint processing may be supported. One is for a single MS served jointly by multiple coordination BSs and the other is for several MSs served jointly by the multiple coordinating BSs, which are supported by channel feedback as defined in 17.3.2.1.8.

To support multi-BS joint processing enabled by the BS for one or multiple MSs, adaptive precoding may be applied in the serving and neighboring cells and user data is shared among those multiple cells.

DL multi-BS joint processing may be performed as follows:

a) PHY channel quality of serving BS and neighbor BS(s) is measured using IM Multi-BS CT PHY Channel Measurement Request/Response (IM_CT-CH-REQ/RSP) message (see 6.3.2.3.105, 6.3.2.3.106) and/or using the sounding based estimation 17.3.2.1.9, and the result of the measurement is gathered. Restricted (and/or recommended) PMI may be included in the IM_CT-CH-RSP or be estimated in the BS based on the UL sounding signals from the MS. Then, the BS decides to forward the gathered info. (as a part of cooperation) and/or schedule the MS based on the result of the measurement on the downlink channel.

b) Multi-BS cooperation is performed to transmit data cooperatively among serving BS and neighbor BS(s), including IM coordinator (controller) through C-SAP/M-SAP via backhaul link. The cooperation for single-BS precoding is triggered, if the certain condition is met as defined in 17.3.2.1.10. Service Primitives (e.g., C-IM-REQ/RSP in 14.2.13.1 and 14.2.13.2) are exchanged among those BSs and IM controller, including following steps:

1) IM controller may request a BS to report the gathered result of the PHY channel measurement, including feedback type, expected information to report (e.g., channel info., PMI), and report condition.

2) In response to the request, a BS reports the corresponding measured (gathered) information of physical channel state information including PMI list for PMI coordination if the report condition is met. In addition, resource usage information may also be reported to assist coordination.

3) As a result of coordination, information (e.g., PMI and resource) to perform multi-BS joint processing is exchanged.

c) Multiple BSs serve MS jointly. A BS performs STC encoding by using the STC matrix as defined by STC_DL_Zone_IE (or MIMO DL Basic IE or MIMO DL Enhanced IE or HARQ MAP) for its assigned antenna configuration, configured by the IM coordinator. When the BS performs STC encoding, the BS precodes with the recommended (or assigned) PMI for a certain amount of time till next configuration. An MS perform received the precoded data defined the DL control, and the MS shall demodulate signal in the same procedure as defined in 8.4.8 if the MS does not receive MIMO_in_Another_BS_IE() or Macro_DL_Basic_IE(). In the case of that the same data are transmitted from multiple BSs in the same data regions, and then the MS performs RF or diversity combining. In addition, MS shall perform soft data combining when it receive MIMO_in_Another_BS_IE(), where the same data are transmitted in the same or different data region.

17.3.2.1.8 Channel feedback for closed-loop transmit precoding

17.3.2.1.8.1 Sounding-based feedback

Multi-BS CT BS may measure the UL channel response and translate the measured UL channel response to an estimated DL channel response when the Tx and Rx hardware are appropriately calibrated. To measure the UL channel response from MS as defined in 8.4.6.2.7, the anchor BS/serving BS may allocate sounding for the channel based on the cooperation among the anchor BS and its neighbor BSs, where they are in the Multi-BS CT candidate set. Those neighbor BSs overhear the allocated UL sounding channel to support DL single-BS precoding and/or DL multi-BS joint processing as defined in 17.3.2.1.6 and 17.3.2.1.7, respectively. The anchor BS and neighbor BSs may perform interference management based on the received signal(s) from the MS(s). To perform interference management, those BSs may transmit preferred precoding based on the sounding signal to the IM coordinator. The IM coordinator may request the BS involved in the Multi-BS CT to perform interference nulling and/or precoding including applied PMI for Multi-BS CT. In addition, each BS received the sounding signal(s) from MS may perform precoding.

17.3.2.1.8.2 MIMO-coefficient-based feedback

A multi-BS CT BS may request its subordinate MS to report the MIMO coefficient that the multi-BS CT BS should use for best DL reception (see 8.4.11.2 and 8.4.11.7), with every instance of BS transmit antennas replaced by transmit antennas selected to use the transmission by BSs in the Multi-BS CT set. For example, if N is the number of transmit antennas selected for Multi-BS CT, (N-1) CQICH shall be allocated the MS, and MS shall report the desired antenna weights of antenna 1 through N-1 based on the antenna 0, where the MS considers each antenna is mapped logically through antenna 1 to N.

To perform interference management, the Multi-BS CT BS may transmit preferred and/or restricted precoding based on the feedback to the IM coordinator. The IM coordinator may request the BS involved in the Mutli-BS CT to perform interference nulling and/or precoding including applied PMI for Multi-BS CT. In addition, the BS received the feedback from MS may perform precoding.

17.3.2.1.8.3 Codebook-based feedback

A multi-BS CT BS may request its subordinate MS to report the precoding matrix index in codebook based on the estimated channel state information, with every instance of BS transmit antennas replaced by transmit antennas selected to use the transmission by BSs in the Multi-BS CT set. Codebooks listed in Table 8-343, Table 8-344, and Table 8-345 are defined for the feedback of single-BS precoding, whose codeword may be employed as the STC matrix in MIMO precoding in 8.4.8.3.6.

To perform interference management with multi-BS coordination, the BS may transmit the received codebook from MS(s) to the IM coordinator. The IM coordinator may request the BS involved in the Multi-BS CT to perform interference nulling and/or precoding including applied codeword for Multi-BS CT. In addition, the BS received the feedback from MS may perform precoding.

17.3.2.1.9 Channel quality measurement and report

When an MS is requested to measure and report the channel quality, the MS shall measure and report the channel quality of the serving BS and/or its neighbor BS(s). When a BS capable of providing cooperative transmission receives the report of the channel quality from the MS, the BS reports the channel quality to the coordinator, if certain conditions are met as defined in 17.3.2.1.10. Reported channel quality by the BS includes the channel quality of the BS itself and the neighbor BS(s).

1 When a serving BS requests a subordinate MS to scan the neighbor BS(s) which are participating in cooper-
2 ative transmission, the MS scans and reports the channel measurement result to the serving BS, if certain
3 conditions are met as defined in 17.3.2.1.10.
4

5 Multi-BS CT BS may instruct the MS to report the channel quality measurement from midamble as defined
6 in 17.3.2.1.9.1.
7

8
9 Multi-BS CT BS may measure the UL channel response and translate the measured UL channel response to
10 an estimated DL channel response. To support DL channel estimation in a mobile environment, sounding
11 based measurement is supported in 17.3.2.1.9.2.
12

13 14 **17.3.2.1.9.1 MIMO midamble measurement for Multi-BS CT**

15
16
17 Midamble is indicated whether it presents by “midamble presence” in STC DL Zone IE. If midamble is
18 presence in Multi-BS CT, the MS shall measure the physical channel quality measurement from the midam-
19 ble in the STC zone. Each transmit antenna of each BS in the Multi-BS CT set is mapped to a MIMO trans-
20 mission from the Multi-BS CT, configured by the IM coordinator. From the perspective of the MS, the
21 selected MIMO transmit antennas that are used will come from the Multi-BS CT set, even though the MS
22 assumes all selected antennas come from the same BS. Transmit antenna unselected antennas can be used
23 for transmission to another MS. For the physical channel measurement, BSs involved in the Multi-BS CT
24 candidate set may transmit same midamble sequence having a mapping to the same midamble ID cell indi-
25 vidually with different time. Instead, those BSs may transmit the midamble sequence having its own midam-
26 ble ID cell.
27
28
29
30

31 As a part of measurement request from BS, the MS measures the midamble and reports the result of physical
32 channel measurement. A Multi-BS CT BS may send the IM Multi-BS CT PHY Channel Measurement
33 Request (IM_CT-CH-REQ) message (see 6.3.2.3.105) to its subordinate MS to obtain measurement report
34 for Multi-BS CT operation. IM_CT-CH-REQ message may include Cell ID and/or symbol offset for mea-
35 surement. In addition, feedback type as well as the recommended and/or restricted feedback information
36 may be included in the IM_CT-CH-REQ message for DL single-BS precoding and/or DL multi-BS joint
37 processing as defined in 17.3.2.1.6 and 17.3.2.1.7, respectively.
38
39
40

41 The MS received the IM_CT-CH-REQ message shall send the IM Multi-BS CT PHY Channel Measurement
42 Response (IM_CT-CH-RSP) message (6.3.2.3.106), which shall be used to respond to the channel measure-
43 ments listed in the received IM Multi-BS CT PHY Channel Measurement Request (IM_CT-CH-REQ) mes-
44 sage.
45
46

47 **17.3.2.1.9.2 Sounding based estimation for Multi-BS CT**

48
49
50 To support DL channel estimation in a mobile environment, an MS may be instructed to transmit sounding
51 signals periodically. An MS capable of CSIT (as indicated by the SBC-REQ message, see 11.8) transmits
52 channel sounding waveforms as defined in 8.4.6.2.7 on the UL to enable the BS to determine the BS-to-MS
53 channel response under the assumption of TDD reciprocity. To enable sounding based measurement, the
54 anchor BS/serving BS only allocates sounding for the channel based on the cooperation among the anchor
55 BS and its neighbor BSs, where they are in the Multi-BS CT candidate set. Those neighbor BSs in the Multi-
56 BS CT candidate set may overhear the allocated UL sounding channel for DL single-BS precoding and/or
57 DL multi-BS joint processing as defined in 17.3.2.1.6 and 17.3.2.1.7, respectively.
58
59
60

61 **17.3.2.1.10 Trigger conditions**

1 Based on the physical channel quality measurement and report as defined in 17.3.2.1.9, the serving BS and
 2 its neighbor BS(s) in the Multi-BS CT candidate set may transmit data to the MS cooperatively, as a result of
 3 the Multi-BS cooperation.
 4

5
 6 The thresholds (i.e., CT_C_Th0, CT_R_Th0, CT_C_Th1, CT_R_Th1, CT_R_Th2, CT_C_Th2 thresholds)
 7 are used to decide whether to perform a Multi-BS CT operation. The CT_C_Th0 and CT_R_Th0 thresholds
 8 are used to decide to initiate multi-BS CT operation and the CT_C_Th1, CT_R_Th1, CT_C_Th2, and
 9 CT_R_Th2 thresholds are used to check and determine the multi-BS scheme between DL single-BS precod-
 10 ing and DL multi-BS joint processing as defined in 17.3.2.1.6 and 17.3.2.1.7, respectively. The operation
 11 procedure of the multi-BS cooperative transmission trigger follows the steps below:
 12

13
 14 a) PHY channel quality of S-BS and N-BS(s) is measured. Based on the request from the BS, the MS
 15 measures the physical channel quality as defined in 6.3.16, 6.3.20.1.2 and/or 17.3.2.1.9 or transmits UL
 16 sounding signals as defined in 8.4.6.2.7 for the sounding based estimation as defined in 17.3.2.1.9.2.
 17

18 b) The measurement result of the physical channel quality is gathered. The BS forwards the gathered
 19 information (such as CINR, RSSI, BSID) to the IM coordinator through C-SAP/M-SAP via backhaul
 20 link.
 21

22 c) Multi-BS cooperation is performed among the serving BS and its neighbor BS(s), including IM coor-
 23 dinator through C-SAP/M-SAP primitives transmitted and received via the backhaul link. Multi-BS CT
 24 operation is initiated based on the gathered information. When the long-term averages of the CINR
 25 and/or RSSI of the S-BS are less than CT_C_Th0 and CT_R_Th0 threshold, respectively, the Multi-BS
 26 CT operation may be initiated. If at least one long-term average of the CINR and/or RSSI of N-BS(s) is
 27 more than CT_C_Th1 and CT_R_Th1 threshold, respectively, PMI coordination may be initiated. Oth-
 28 erwise, if at least one long-term average of the CINR and/or RSSI of N-BS(s) is more than CT_C_Th2
 29 and CT_R_Th2 threshold, respectively, joint processing may be initiated. During the cooperation, the
 30 IM coordinator may request to a BS to initiate Multi-BS CT operation. In response to the request from
 31 the IM coordinator, the BS accepts the request, rejects with the reason (e.g., heavy traffic load), or
 32 requests to delay (re-request) the multi-BS CT operation.
 33
 34

35 d) Those BSs (S-BS and N-BS(s)) transmits data to the MS cooperatively.
 36
 37
 38

39 In addition, a S-BS may send the list of the neighbor BS(s), including the CINR mean and/or RSSI mean as
 40 indicated by the Report metric parameter, to a subordinate MS, and request a subordinate MS to measure the
 41 physical channel quality of the neighbor BS(s). The BS supporting Multi-BS CT operation shall broadcast a
 42 DCD message that may include the CT_CINR_Th0 Threshold, CT_RSSI_Th0 Threshold, CT_CINR_Th1
 43 Threshold, CT_RSSI_Th1 Threshold, CT_CINR_Th2 Threshold, and CT_RSSI_Th2 Threshold. The MS
 44 responds to this request by reporting the channel measurement of the requested BS(s) back to the requested
 45 BS(s), if the CINR (RSSI) of the S-BS is less than CT_CINR_Th0 (CT_RSSI_Th0) and/or the CINR (RSSI)
 46 of the N-BS is more than CT_CINR_Th1 (CT_RSSI_Th1) and/or CT_CINR_Th2 (CT_RSSI_Th2).
 47
 48
 49

50 **17.3.2.2 UL Multi-BS MIMO**

51 **17.3.2.2.1 UL multi-BS joint processing**

52
 53 When UL multi-BS joint processing is enabled, radio resource allocation, data mapping, and pilot pattern
 54 allocation shall be aligned among coordinating BSs. The same data packet is received by the coordinating
 55 BSs on the same time and frequency resources.
 56
 57
 58

59 A single MS may be served jointly by multiple coordination BSs based on the physical channel quality mea-
 60 surement and report as defined in 17.3.2.1.9. The serving BS and its neighbor BS(s) in the Multi-BS CT can-
 61 didate set may perform the macro diversity combining, as a result of the cooperation. With macro-diversity
 62 combining enabled, soft decision information in the form of log-likelihood ratios are generated at neighbor-
 63 ing BSs, transmitted to anchor BS accompanied with scheduling information (such as resource allocation
 64
 65

1 information, Matrix Indication, Pilot patterns, and etc.) through M-SAP/C-SAP primitives over backhaul
 2 network, and combined at anchor BS.
 3

4 **17.3.2.2.2 Trigger conditions**

5
 6
 7
 8
 9
 10 To decide to operate the multi-BS CT, the two thresholds (i.e., CT_Th0 and CT_Th1 thresholds) are used.
 11 CT_Th0 is a threshold to decide to initiate multi-BS CT operation and CT_Th1 is a threshold to check and
 12 determine the multi-BS scheme UL multi-BS joint processing as defined in 17.3.2.1. The operation proce-
 13 dure of the multi-BS cooperative transmission trigger follows the steps below:
 14

15 a) PHY channel quality of serving BS and neighbor BS(s) is measured. Based on the request from the
 16 BS, the MS measures the physical channel quality as defined in 6.3.16, 6.3.20.1.2 and/or 17.3.2.1.9 or
 17 transmits UL sounding signals as defined in 8.4.6.2.7 for the sounding based estimation as defined in
 18 17.3.2.1.9.2.
 19

20 b) The measurement result of the physical channel quality is gathered. The BS forwards the gathered
 21 information (such as CINR, RSSI, BSID) to the IM coordinator through C-SAP/M-SAP primitives via
 22 backhaul link.
 23

24 c) Multi-BS cooperation is performed jointly by serving BS and neighbor BS(s), including IM coordi-
 25 nator through C-SAP/M-SAP via backhaul link. Multi-BS CT operation is determined to initiate based
 26 on the gathered information. When the long-term average CINR (and/or RSSI) of the S-BS is less than
 27 CT_C_Th0 and CT_R_Th0 threshold, multi-BS CT may be initiated. If at least one CINR (and/or
 28 RSSI) of N-BS(s) is more than CT_C_Th1 and CT_R_Th1 threshold, Multi-BS CT operation (i.e., UL
 29 multi-BS joint processing) may be initiated after the cooperation. During the cooperation, the IM coordi-
 30 nator may request to a BS to initiate Multi-BS CT operation. In response to the request from the IM
 31 coordinator, the BS accepts the request, rejects with the reason (e.g., heavy traffic load), or requests to
 32 delay (re-request) the multi-BS CT operation. If the BS accepts the request, the Multi-BS CT operation
 33 is performed. If the BS rejects the request, the IM coordinator may request again at a later time deter-
 34 mined by the IM coordinator. If the BS requests to delay, the IM coordinator may request again after
 35 the delay specified by the BS in the Re-request Time timer.
 36

37 d) Those BSs (serving BS and neighbor BS(s)) perform the multi-BS cooperative transmission.
 38
 39
 40

41 **17.4 BS power management**

42 **17.4.1 General Description**

43 This subclause describes the power management functions of base stations for energy efficient operation.
 44 The power management function under this subclause details not only operation of single base station but
 45 also cooperative operations of adjacent base stations.
 46

47 Base stations including macro and small base stations always operate in Normal mode when the base station
 48 power management is not supported at the base stations.
 49

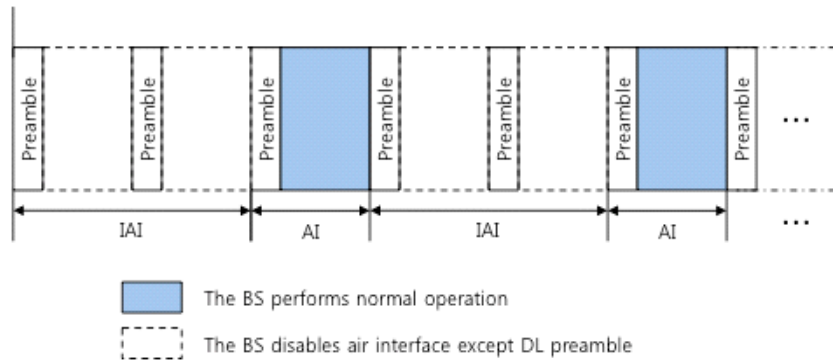
50 Base stations supporting the base station power management described in this subclause operate in one of
 51 the power saving operation modes such as Duty-cycled mode or Standby mode when the operation condition
 52 is met.
 53

54 **17.4.2 Duty-cycle Mode**

55 Besides the normal operation mode, BSs may support duty-cycle mode to reduce interference to neighbor
 56 cells and to conserve its power consumption. The support of duty-cycle mode is negotiated with a BS power
 57
 58
 59
 60
 61
 62
 63
 64
 65

1 controller during the BS initialization and configuration. Duty-cycle mode can be activated through negotia-
 2 tion between the BS and NCMS when the BS is in normal operation mode.
 3

4 The duty-cycle mode consists of Active Intervals (AI) and Inactive Intervals (IAI). When duty-cycle mode
 5 is active for the BS, the BS shall be in either AI or IAI. During the AI, the BS becomes active on the air
 6 interface for activities such as paging, transmitting system information, ranging, or data traffic transmission.
 7 During the IAI, the BS does not transmit anything on the air interface except DL preamble and may power
 8 down one or more physical operation components after the first symbol occupied by the DL preamble or
 9 perform other activities such as synchronization with the overlay macro BS or measurement of the
 10 interference from neighbor cells. Figure 17-3 depicts an example of frame structure during duty-cycle mode
 11 operation
 12
 13
 14



32 **Figure 17-3—Example of frame structure during duty-cycle mode operation**
 33
 34
 35

36 If a BS that supports duty-cycle mode receives a request from a BS power controller to enter duty-cycle
 37 mode, it shall respond to the request and perform the operations described below. If there are active MSs
 38 connected to the BS when it receives the request, the BS shall perform the BS-initiated handover as
 39 specified in 6.3.20.2 to ensure service continuity of the MSs prior to activating duty-cycle mode. After
 40 completion of handovers for the MSs, the BS activates duty-cycle mode at Action time specified in the
 41 received request. If the handovers are not completed before the Action time or if any MSs cancel or reject
 42 the handover requested by the BS, the BS shall transmit a response to notify the BS power controller of the
 43 failure and continue to stay in normal operation mode. If there aren't active MSs connected to the BS when
 44 the BS receives the request from the BS power controller and there is no new MS that attempts initial
 45 network entry or handover to the BS until the Action time, the BS enters duty-cycle mode at the Action time.
 46 Otherwise, the BS shall notify the BS power controller of the failure and continue to stay in normal
 47 operation mode.
 48
 49

50
 51 If a BS in duty-cycle mode receives a request from the BS power controller to terminate the duty-cycle
 52 mode, it shall terminate the duty-cycle and go back to the normal mode after transmitting a response to the
 53 BS power controller.
 54
 55

56 If a BS in duty-cycle mode receives a RNG-REQ message from an MS that performs initial network entry or
 57 network reentry during an AI of the duty-cycle mode, it shall transmit a request for termination of duty-cycle
 58 mode to the BS power controller. When the BS power controller receives the request from the BS, it deter-
 59 mines whether the requesting BS has to terminate the duty-cycle mode or not. Criteria for termination of the
 60 duty-cycle mode may include factors such as MS performance degradation, BS power saving performance,
 61 and inter-cell interference. For example, the BS power controller may accept the request triggered by net-
 62 work reentry from HO and may reject the request triggered by initial network entry. Algorithms or policies
 63 for determining the termination of duty-cycle mode are out of scope of this standard.
 64
 65

1 If the request is accepted by the BS power controller, the BS transits to the normal mode and proceed with
 2 initial network entry or network reentry by transmitting a RNG-RSP message with “Ranging Status” set to
 3 Success or Continue. If the request is rejected by the BS power controller, the BS continues to stay in duty-
 4 cycle mode and transmits the RNG-RSP message with “Ranging Status” set to Abort. In case the BS power
 5 controller rejects the request for termination of the duty-cycle mode, the BS may redirect the MS to a nearby
 6 BS by including the information of the nearby BS in the RNG-RSP message.
 7
 8

9
 10 A BS in the duty-cycle mode shall support all available intervals of a paging cycle if it supports idle mode
 11 operation. Figure 17-4 provides an example where a BS in the duty-cycle mode supports a single paging
 12 cycle.
 13

14
 15
 16
 17 **17.4.2.1 Duty-cycle pattern**
 18

19
 20 A sequence of active and inactive intervals forms a duty-cycle pattern. The duty-cycle pattern is the iteration
 21 of one inactive interval and one active interval.
 22

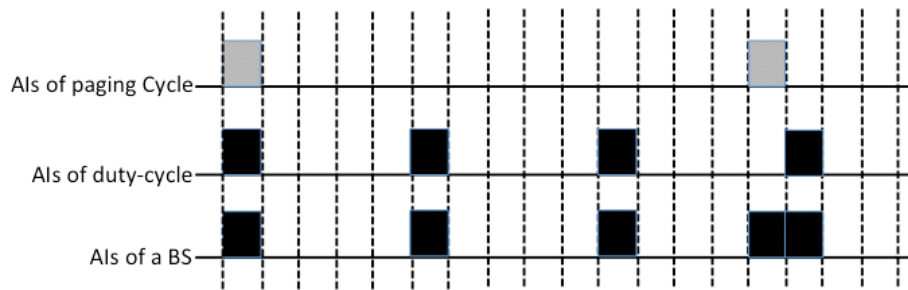
23 The duty-cycle pattern parameters include the following:

- 24 —Length of an active interval (in unit of frames)
- 25 —Length of an inactive interval (in unit of frames)
- 26 —Start frame offset
- 27
- 28

29 The inactive interval starts at the frame number “N”,

30
 31 where $N \text{ modulo } (\text{active interval} + \text{inactive interval}) = \text{Start frame Offset}$
 32

33
 34 Once a BS enters duty-cycle mode, the duty-cycle pattern of the BS is activated. The duty-cycle pattern
 35 parameters are assigned by a BS power controller when the BS power controller requests a BS in normal
 36 mode to activate the duty-cycle mode or requests a BS in the duty-cycle mode to change the current active
 37 duty-cycle pattern.
 38
 39
 40
 41



42
 43
 44
 45
 46
 47
 48
 49
 50
 51
 52
 53
Figure 17-4—Example of operation in duty-cycle mode
 54

55
 56
 57 **17.4.3 Standby Mode**
 58

59
 60 Besides the normal mode and duty-cycled mode, a BS may support standby mode to reduce power con-
 61 sumption and interference to neighbor cell. The BS may enter standby mode if there are no MSs attached to
 62 the BS or a small number of MSs are attached to the BS. If the BS enters standby mode, it deactivates its air
 63 interface to conserve energy consumption but keep its network interface active to exchange control informa-
 64 tion with neighbor BSs or network entities.
 65

17.4.3.1 Standby mode initiation

A BS that supports standby mode shall receive configuration information of standby mode from a BS power controller during its initialization or re-configuration phase, prior to operating in normal mode. If a time-based transition included in the configuration information is enabled, the BS shall initiate and terminate the standby mode based on activation and deactivation time included in the configuration information. If an event-based transition included in the configuration information is enabled, the BS shall initiate and terminate the standby mode based on a request from the BS power controller. A BS may support the time-based transition and event-based transition simultaneously.

If the time-based transition is enabled, the BS power controller shall assign activation and deactivation time of the standby mode to the BS. The activation and deactivation time for the BS is determined based on an algorithm that is outside the scope of this standard. This algorithm may use, for example, statistical information on user density, traffic load, interference to/from neighbor cells, etc. Algorithms or policies for determining activation/deactivation time of the standby mode are out of scope of this standard.

If the time-based mode transition is enabled and activation and deactivation time of standby mode is specified during configuration phase, the BS shall activate Standby_Mode_Activation timer with the assigned activation time as soon as it starts normal operation. If only event-based transition is enabled, the BS stays in normal mode until it receives a request from the BS power controller to transit to standby mode.

When the Standby_Mode_Activation timer expires or a request is received from a BS power controller to enter Standby Mode immediately, the BS shall complete the operations described below and disable its air interface. Before disabling the air interface, the BS shall set the cell bar TLV in UCD message to 1 to prevent MS (re)entry and may perform BS-initiated HO procedure as defined in 6.3.20 to hand over active MSs attached to the BS to neighbor BSs. When HO procedures for all MSs attached to the BS are completed, the BS shall disable the air interface and notify the BS power controller of the completion of the mode transition from normal mode to standby mode. If the mode transition is triggered by the expiration of Standby_Mode_Activation timer, the BS shall activate Standby_Mode_Deactivation timer with the deactivation time assigned by the BS power controller during configuration phase as soon as it enters the standby mode.

During standby mode, the air interface of the BS is disabled and the BS does not perform any PHY/MAC operation. But, the BS shall not disable a network interface with neighbor BSs or network entities to perform management operation.

17.4.3.2 Standby mode termination

A BS in standby mode shall go back to normal mode if Standby_Mode_Deactivation timer is expired or it receives a transition request from the BS power controller. The BS shall initialize and activate the air interface as specified in 17.1.4 before going back to normal mode. The BS shall activate Standby_Mode_Activation timer after the mode transition is completed if time-based transition is enabled.

17.4.4 Cooperation of Base Stations for Power Management

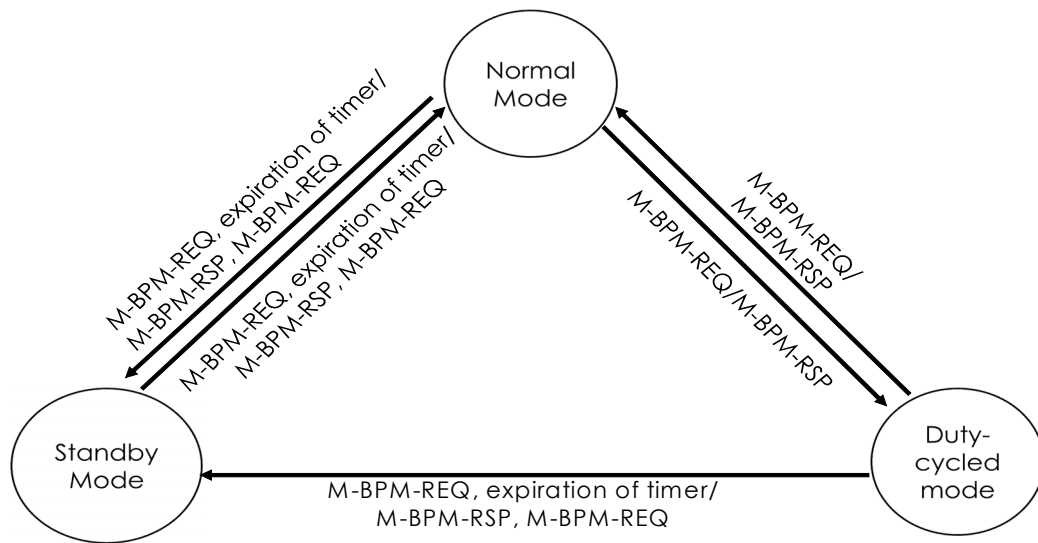
The base stations cooperate with other adjacent base stations and/or NCMS (Network Control and Management System) to increase the power saving performance and to prevent the performance degradation (e.g. throughput decreases and coverage holes) due to the power saving operation of base stations.

1
2
3 *Insert new Annex R as indicated:*
4
5
6

7 **Annex R**

8
9
10 (informative)

11
12
13 **BS operation mode transition diagram**
14
15



16
17
18
19
20
21
22
23
24
25
26
27
28
29
30
31
32
33
34
35
36
37
38
39
40
41 **Figure R-1—BS operation mode transition**
42
43
44
45
46
47
48
49
50
51
52
53
54
55
56
57
58
59
60
61
62
63
64
65