

**Project: IEEE P802.15 Working Group for Wireless Personal Area  
Networks (WPANs)**

**Submission Title: Coex Proposal by Meta to BT-SIG**

**Source:** Carlos Aldana (Meta), Guoqing Li (Meta), Connor Kennedy (Meta), Davide Magrin (Meta), Kumail Haider (Meta), Kanji Kerai (Meta)

**Address :** [1 Hacker Way, Menlo Park, CA 94025]

**E-Mail:** [caldana, guoqingli, connork, davidmagrin, haiderkumail, kanjikerai (at) meta.com]

**Re: Study Group 4ab: UWB Next Generation**

**Abstract:** [This provides the coex proposal made by Meta to BT-SIG]

**Purpose:** [This shows effects of LBT to both Wi-Fi and NB devices]

**Notice:** This document has been prepared to assist the IEEE P802.15. It is offered as a basis for discussion and is not binding on the contributing individual(s) or organization(s). The material in this document is subject to change in form and content after further study. The contributor(s) reserve(s) the right to add, amend or withdraw material contained herein.

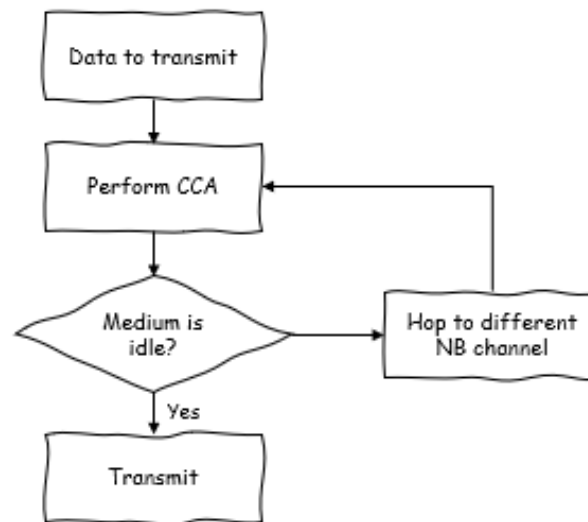
**Release:** The contributor acknowledges and accepts that this contribution becomes the property of IEEE and may be made publicly available by P802.15.

# Outline

- Background
- Proposal
- Simulation Results
- Conclusions

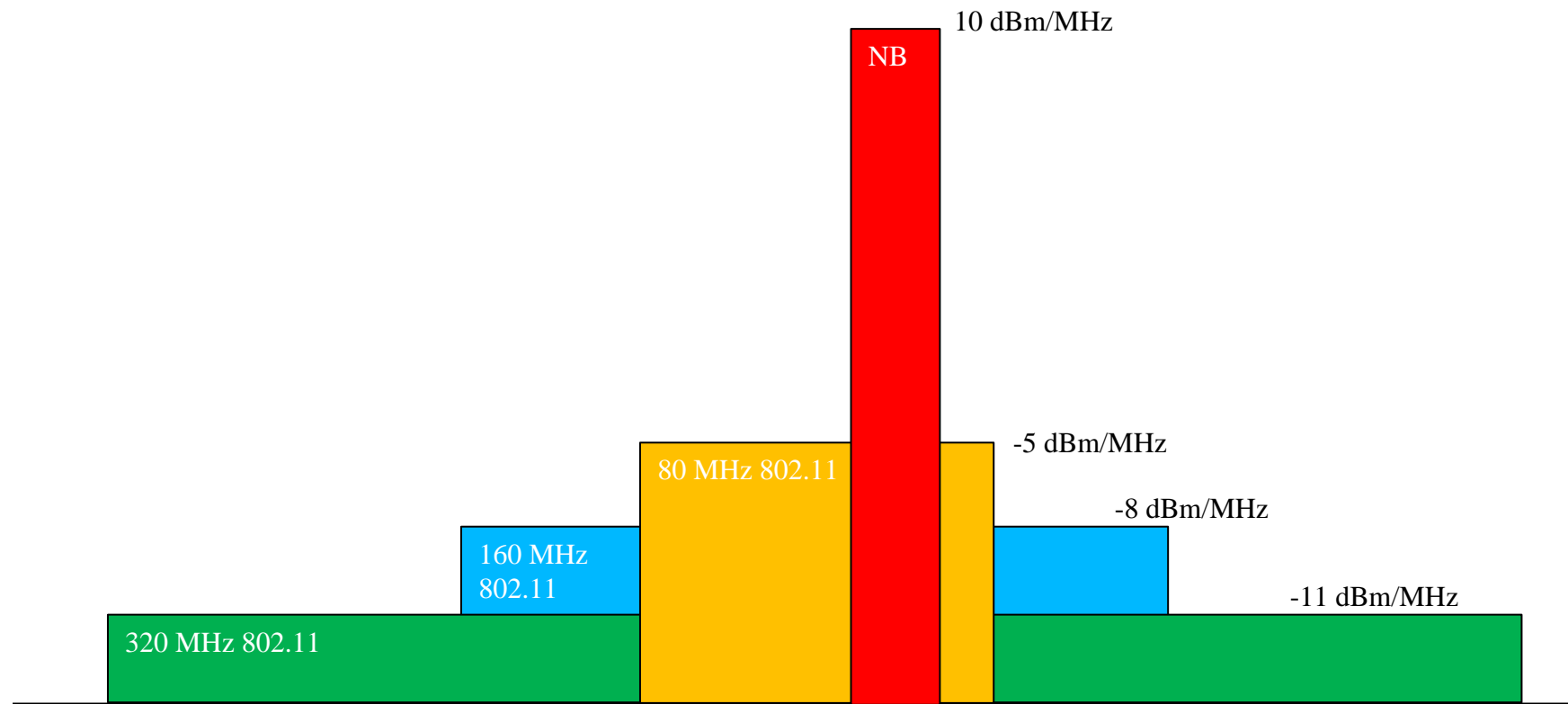
# Background

- NB technology is currently allowed in Europe as specified in EN 303687 with a 10dBm/MHz PSD and 14 dBm TX Power.
  - Wi-Fi VLP has the same TX Power but much reduced PSD: -5/-8/-11 dBm ( for 80/160/320 MHz) which means that NB has a 15/18/21 dB PSD advantage over Wi-Fi VLP using 80/160/320 MHz.
  - This implies that NB will significantly interfere with Wi-Fi VLP operations using 80/160/320 MHz, hence a coex scheme is required for NB technology in Higher Band.
- Bluetooth SIG made a channel access proposal to ETSI based on LBT in BRAN(24)123a003r1



# Background: Europe 6 GHz NB vs 802.11 VLP spectrum

NB with 14 dBm EIRP is 15/18/21 dB stronger than 802.11 VLP with 80/160/320 MHz



Note that skirts associated with NB spectrum are not shown and affect many 802.11 sub-carriers

# Background on Spectrum

- BLE covers 5 GHz (UNII-1, UNII-3, UNII-4) and 6 GHz (UNII-5)
  - 800 MHz of additional spectrum in UNII-1,3,4 and 5
  - Not Considered UNII 6-8 band - additional 700 MHz
- Potential occupancy of Wi-Fi in HB? See ref [here](#)
  - UNII-1: 80 MHz [20 MHz non-overlapping]
  - UNII-3: 100/115 MHz (up to ch 165/169) [24/10 MHz non-overlapping]
  - UNII-4: 45 MHz in US (if ch 169-177 used) [0 MHz non-overlapping in US]
    - 0? In Europe [24 MHz non-overlapping in Europe?]
  - UNII-5 : 500 MHz [0 MHz non-overlapping]

Frequency Range (MHz)	Bandwidth (MHz)	U-NII name
5150-5250	100	U-NII-1
5250-5350	100	U-NII-2A
5350-5470	120	U-NII-2B
5470-5725	255	U-NII-2C
5725-5850	125	U-NII-3
5850-5925	75	U-NII-4
5925-6425	500	U-NII-5
6425-6525	100	U-NII-6
6525-6875	350	U-NII-7
6875-7125	250	U-NII-8

# Location of non-overlapping spectrum shown in blue

In US, there is possibility to have ~13 2 MHz channels in UNII-1,3  
In Europe, there is possibility to have ~31 2 MHz channels in UNII-1,3, and 4

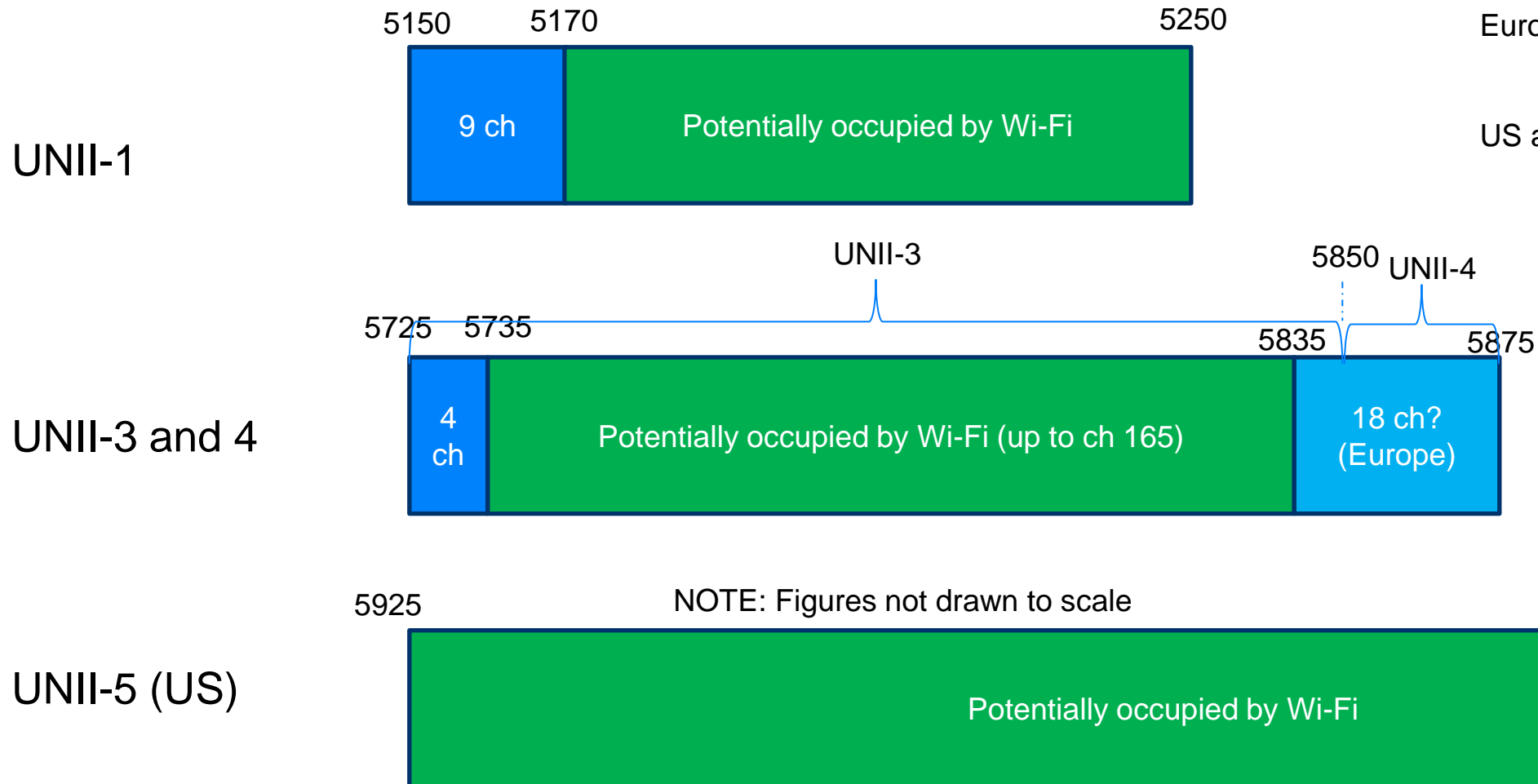
US only



Europe only



US and Europe



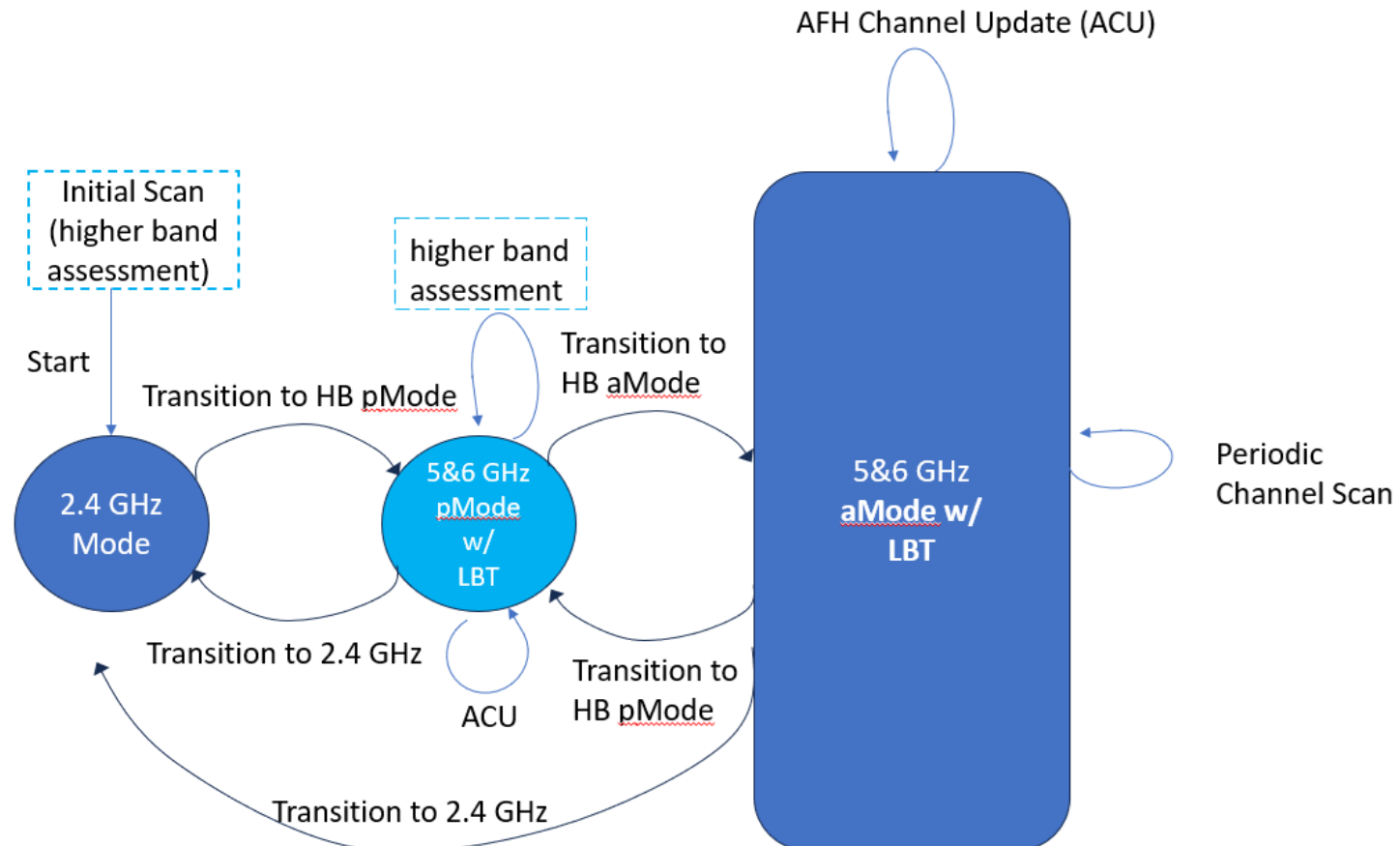
# Key Aspects

- The proposed coex mechanism is based on 4 concepts:
  - **Primary mode, called pMode**, uses “non-overlapping” non-802.11 channels called “primary channels”. **All-Channel mode, called aMode**, uses both the “non-overlapping” and “overlapping” channels. When the device enter HB, it first enters pMode.
  - **Mandatory LBT**
  - **A device entering aMode shall perform the following**
    - **Initial scan** - reliable scan in HB that detects occupied channels (WB, or both NB and WB),
    - **Ongoing scan** - HB scanning during data transmission provides more detailed information about channel utilization (CU) and detecting any new interference
  - A device may stay in pMode without doing either the initial scan or ongoing scan
  - If all HB overlapping channels deemed “occupied” or link budget is not met, BLE can either go back to the non-overlapping channels, 2.4 GHz, or go to least occupied overlapping 20 MHz segment(s)

# Meta's Proposed Block Diagram

Two modes - pMode & aMode. pMode is primary mode - NB operation using “non-overlapping” channels. aMode uses all channels

CCA in Higher band allows for deferral in both aMode and pMode.





# LBT Proposal

- Mandate LBT for Central device
- LBT by the Peripheral may not be needed if gap between central and peripheral transmissions is short enough (e.g. 25us)
- LBT with a CCA for a duration between 14-25us window before transmitting. If medium is sensed busy, defer; else transmit

# Proposal of Initial Scan for devices planning to use aMode

- Initial scanning to detect WB interference
  - BLE Central may use 20 MHz scan to improve accuracy and/or duration
    - Mandate a maximum channel switch time for scanning (e.g. 25, 50, 75us)
      - 75us improves scan duration ~ 2x over 150us switch time (see Appendix)
- To improve scan/detection accuracy
  - Require 99% success probability at each channel to detect CU (Channel Utilization)  $\geq 10\%$
- Testing of initial scan - test the DUT detects interference by confirming it does not transmit in “any” occupied 20 MHz channel

# Proposal for Ongoing Scan

- Ongoing Scanning
  - Periodically every channel that the device may use should be scanned
  - Periodic scan time (e.g. 2ms in a 10ms connection interval, every X ms)
    - For example, if X= 40ms, the scan duty cycle is 5%
  - Compute CU (Channel Utilization) metric during the Ongoing Scan
- To reduce ongoing scanning time
  - Central could use a 20 MHz scan to speed up channel scan and/or improve accuracy
  - A smaller channel switch time (e.g. 25us/50us/75us) can also help speed up channel scan
- To improve scan/detection accuracy
  - Require at least 99% success probability at each channel to detect CU (Channel Utilization)  $\geq$  10% within TBD ms
- Power save option
  - Period of Ongoing Scan (value of X above) can be configured
  - Another possibility to avoid ongoing scan is to stay in pMode

# Simulation Results



# Simulations

Case 1: BLE/BLE in 30 channels (pMode), with no overlap with Wi-Fi

Case 2: BLE/Wi-Fi coex in 70 channels (57% overlap with Wi-Fi)

- 30 non-overlapping channels
- 40 channels overlapping 100% with an 80 MHz Wi-Fi with ~20% CU
- CU information not available to BLE

Case 3: BLE/Wi-Fi coex in 70 channels (57% overlap with Wi-Fi)

- identical to case 2 above but CU information is available to BLE

- Case 1 examines BLE LBT vs no LBT
- Figures examine line of sight (LOS) vs. non-line of sight (NLOS) between a central and its peripherals.
- LOS Channel model includes free space loss with a coefficient of 2 up to a breakpoint distance ( $d_{BP}$ ), and 3.5 beyond  $d_{BP}$ .
  - $d_{BP} = 10$  to represent an indoor office scenario
- NLOS channel model adds an extra 30 dB of attenuation to LOS
- BLE throughput is normalized and Wi-Fi throughput, P50, P95 latency are shown.

# BLE Parameters

- 2 peripherals per central, 96 Kbps traffic to both, CIS traffic
- 10 ms ISO period
- 6 TX attempts over two ISO periods (NSE=3, FT=2)
- -75 dBm/MHz Energy Detection threshold
- Spectral mask with 35 dB drop in the adjacent 2 MHz channel and 50 dB drop in the next channel after that
- 14 dBm transmit power
- 25 us LBT before TX for both central and peripheral

# Wi-Fi Parameters

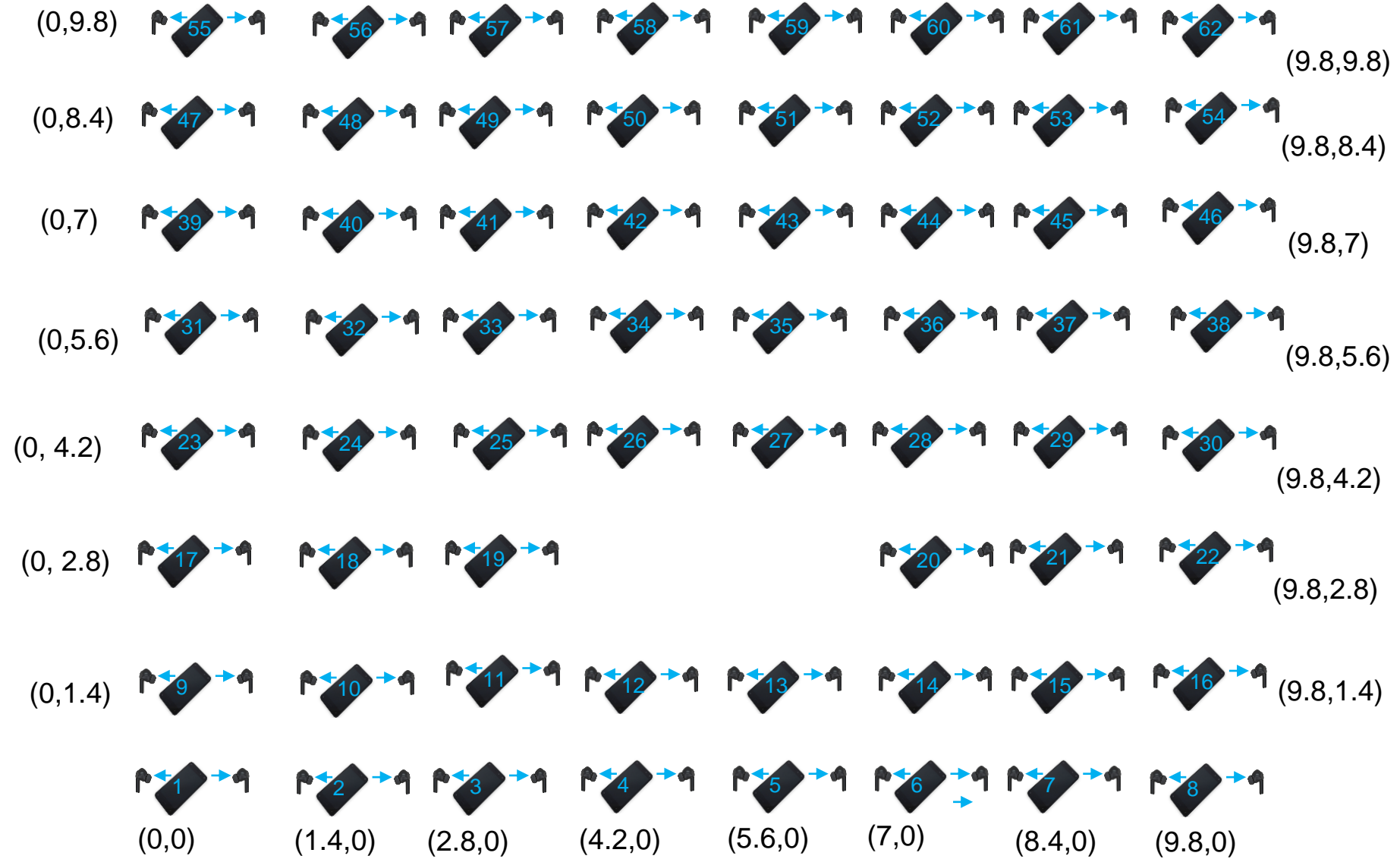
- 100 Mbps 72 Hz DL, 3 Mbps 500 Hz UL
- 802.11ax: 80 MHz, MCS 11, NSS 2, 0.8us GI ( ~1.2 Gbps PHY) ~21% Channel Utilization (CU)
- Size 256 BA window
- RTS/CTS on
- A-MSDU aggregation off
- 14 dBm TX power
- Beacons are included

Case 1 30 channel BLE/BLE



# BLE only

DL NB →



# 30 Channel BLE/BLE

- Examines LBT and no LBT in both LOS and NLOS scenarios where only BLE devices are present

## Takeaways:

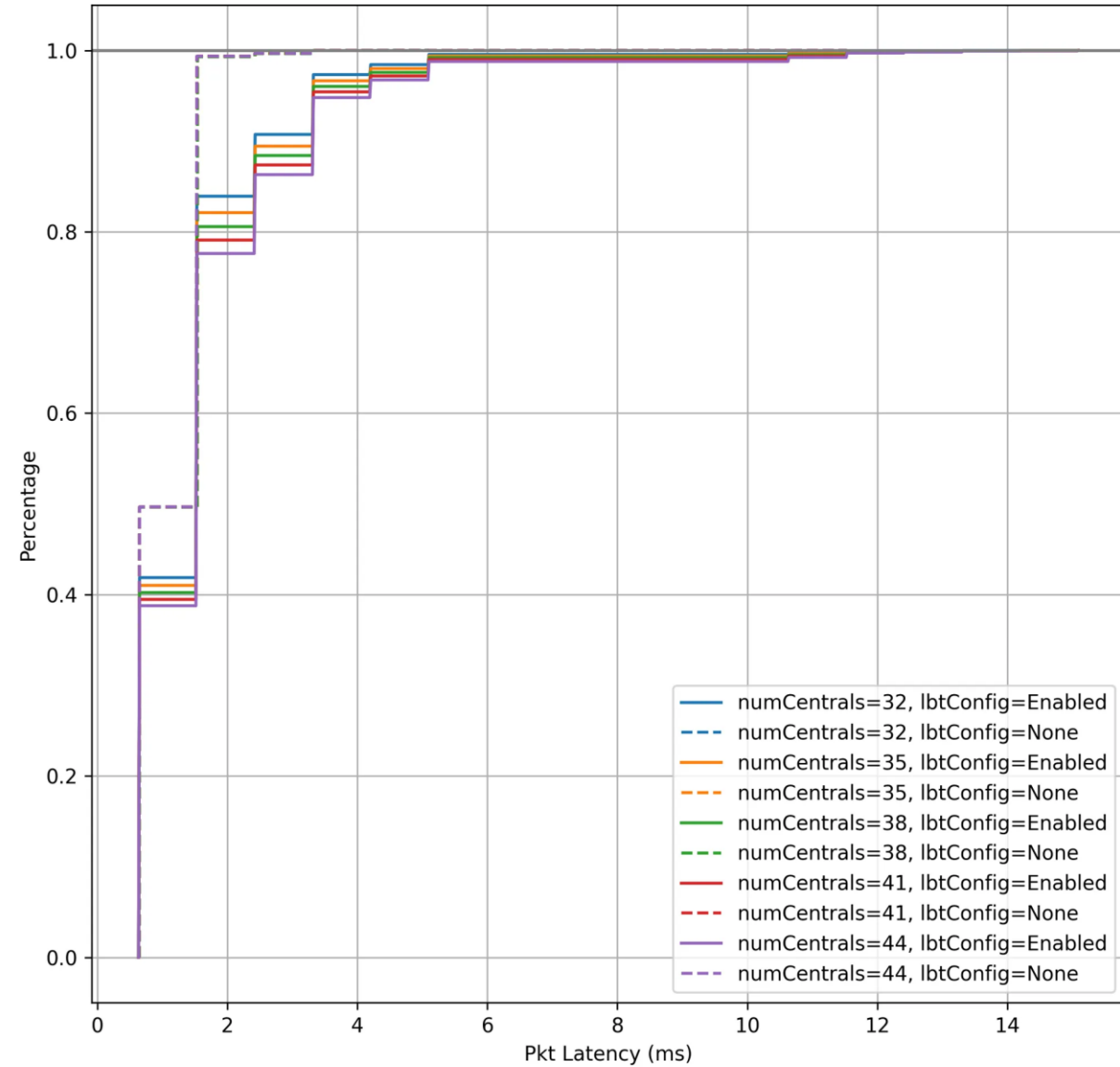
- LOS
  - No LBT slightly outperforms LBT
    - Most of the time both packets succeed, which is why no-LBT is better.
  - LBT can support ~ 30-40 centrals, depending on flush rate (e.g., ~39 centrals meet 0.01% flush rate)
- NLOS
  - LBT significantly outperforms no LBT
    - With LBT, when a collision happens, only 1 packet is “lost” whereas with no LBT both packets are “lost”.
  - LBT can support ~30-40 centrals, depending on flush rate (e.g., ~37 centrals meet 0.01% flush rate)

# BLE/BLE LOS Latency

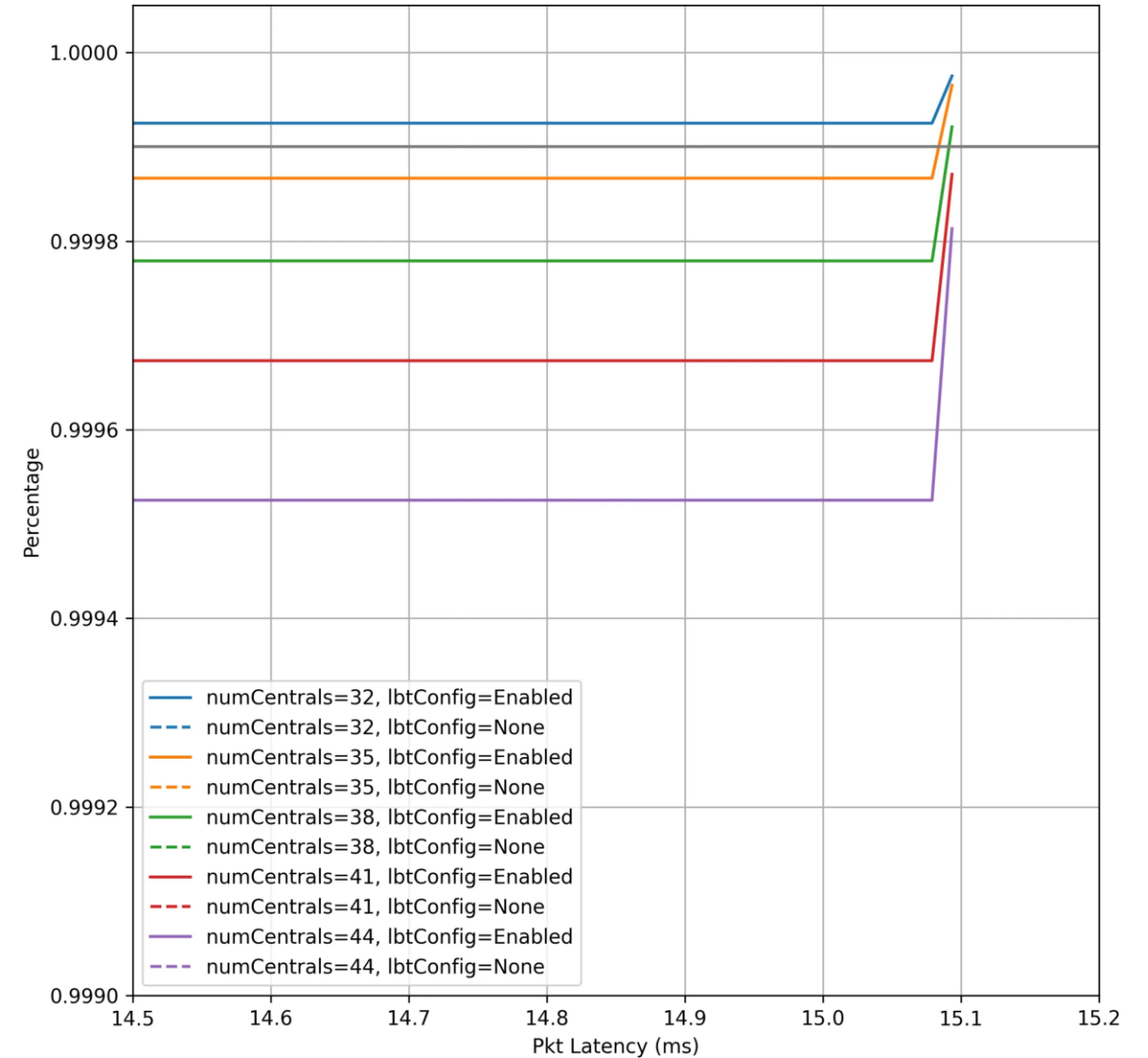
LBT is solid and no-LBT is dashed

\*Zoomed-in version of graph on left

CDF bleLOS:1 TX DL



CDF bleLOS:1 TX DL



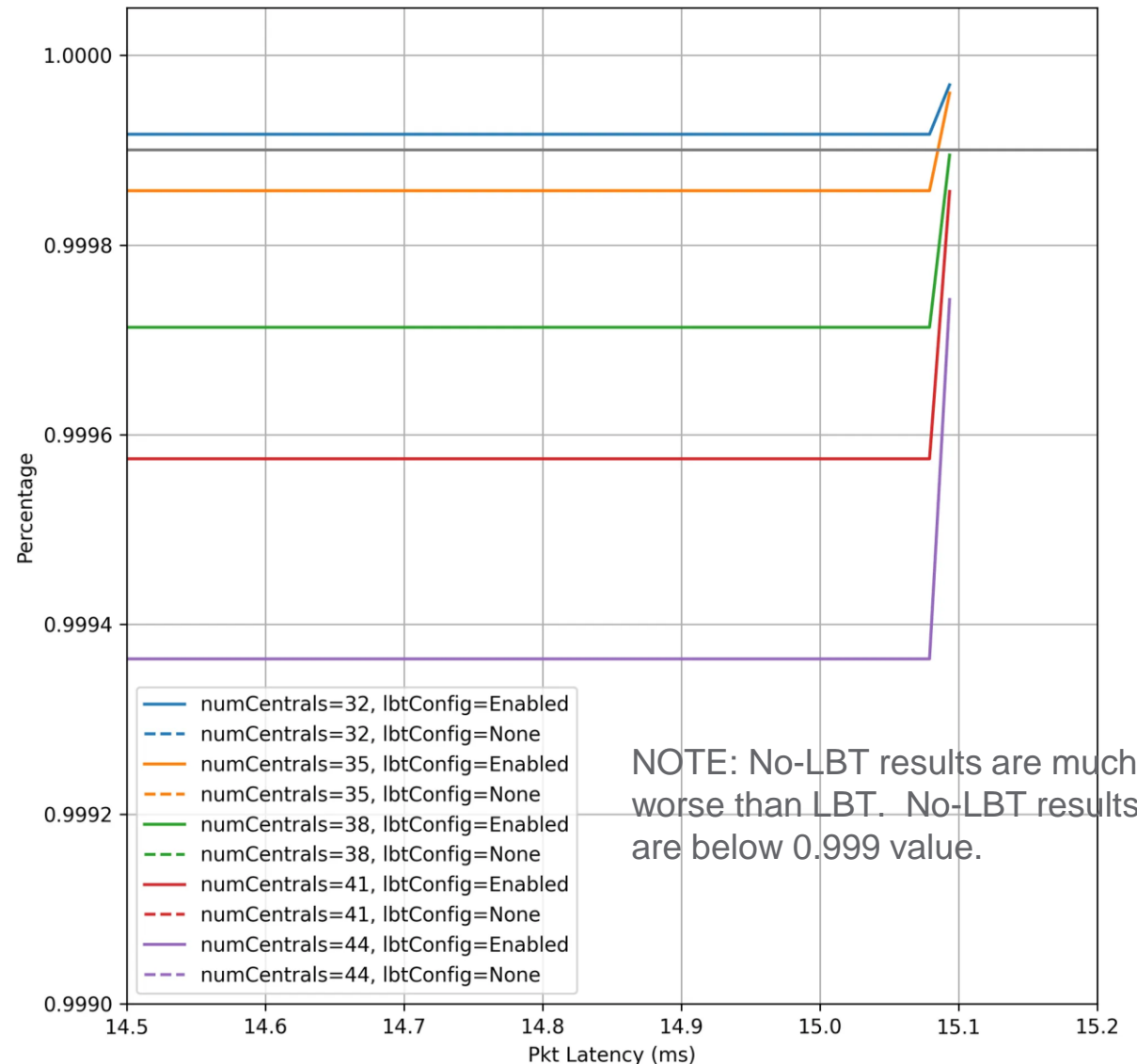
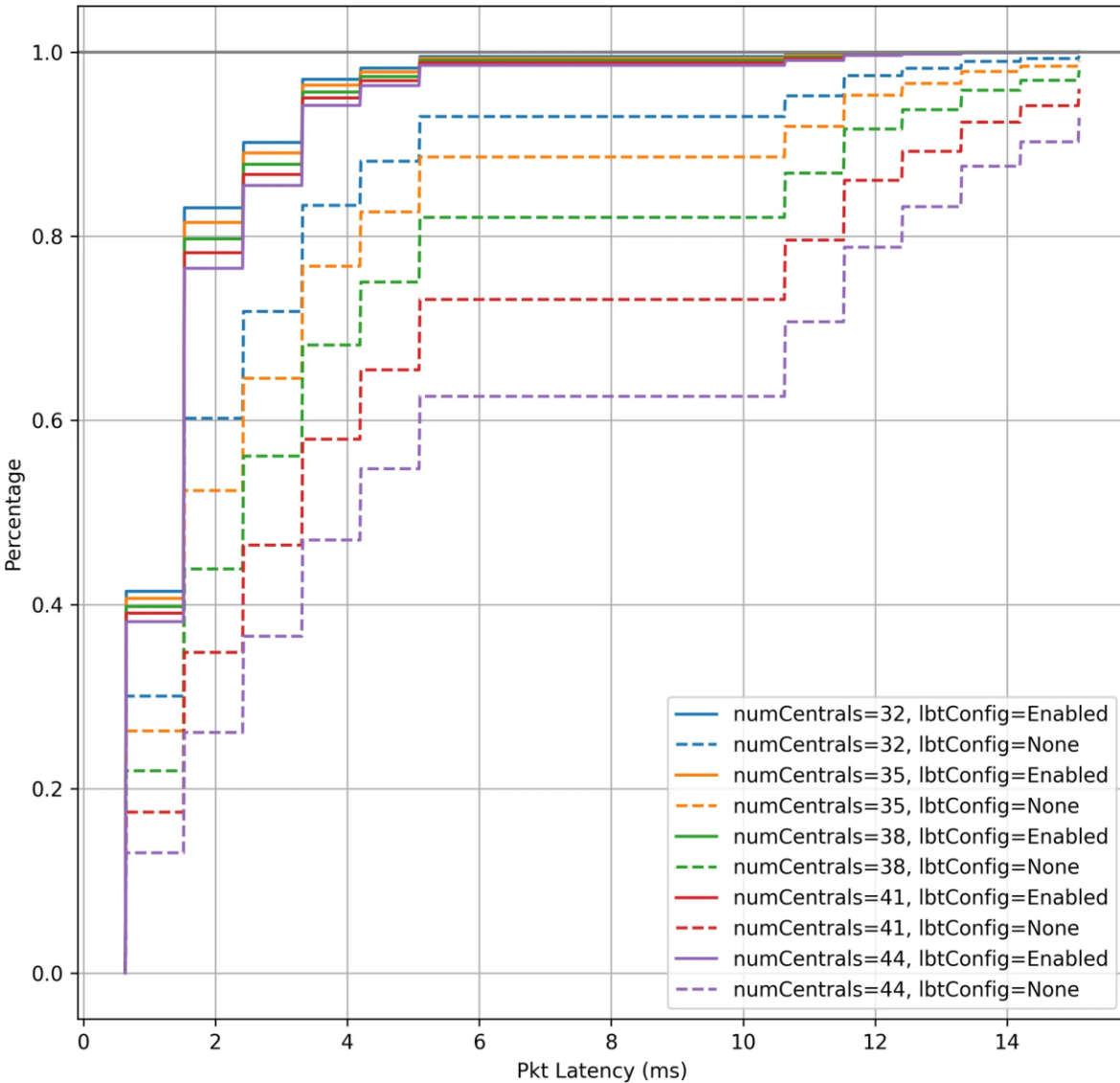
# BLE/BLE NLOS Latency

LBT is solid and no-LBT is dashed

\*Zoomed-in version of graph on left



CDF bleLOS:0 TX DL

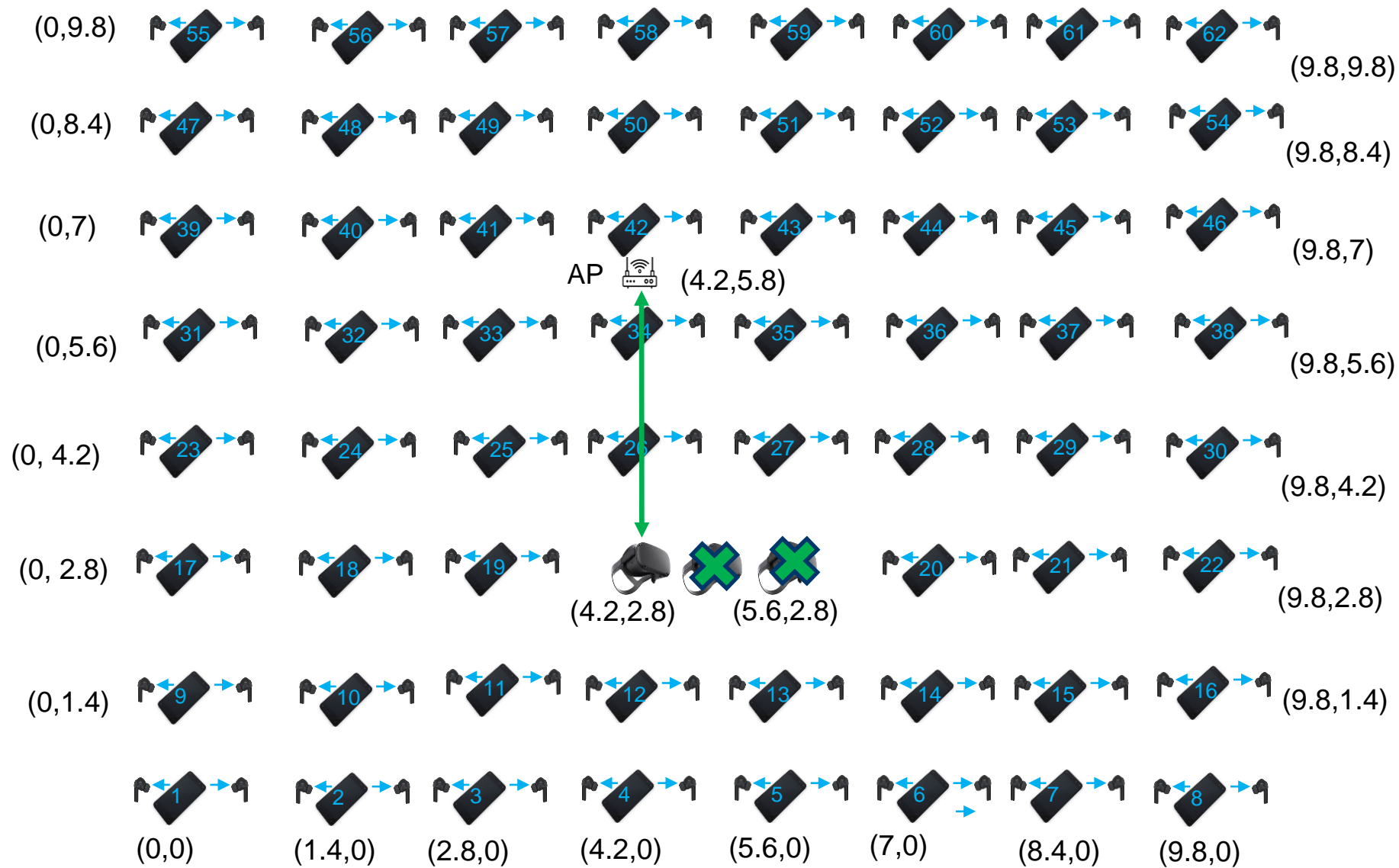
CDF bleLOS:0 TX DL



Case 2 BLE/Wi-Fi 57% Overlap with  
21%CU, CU information not available to BLE

# 1 STA Scenario

UL/DL 802.11   
DL NB 



# 70 Channel BLE/Wi-Fi 57% Overlap

- Examines only LBT in both LOS and NLOS scenarios
- No LBT causes unacceptable Wi-Fi degradation
- Clear channels used at a ratio of 1:1 compared to overlapped Wi-Fi channels

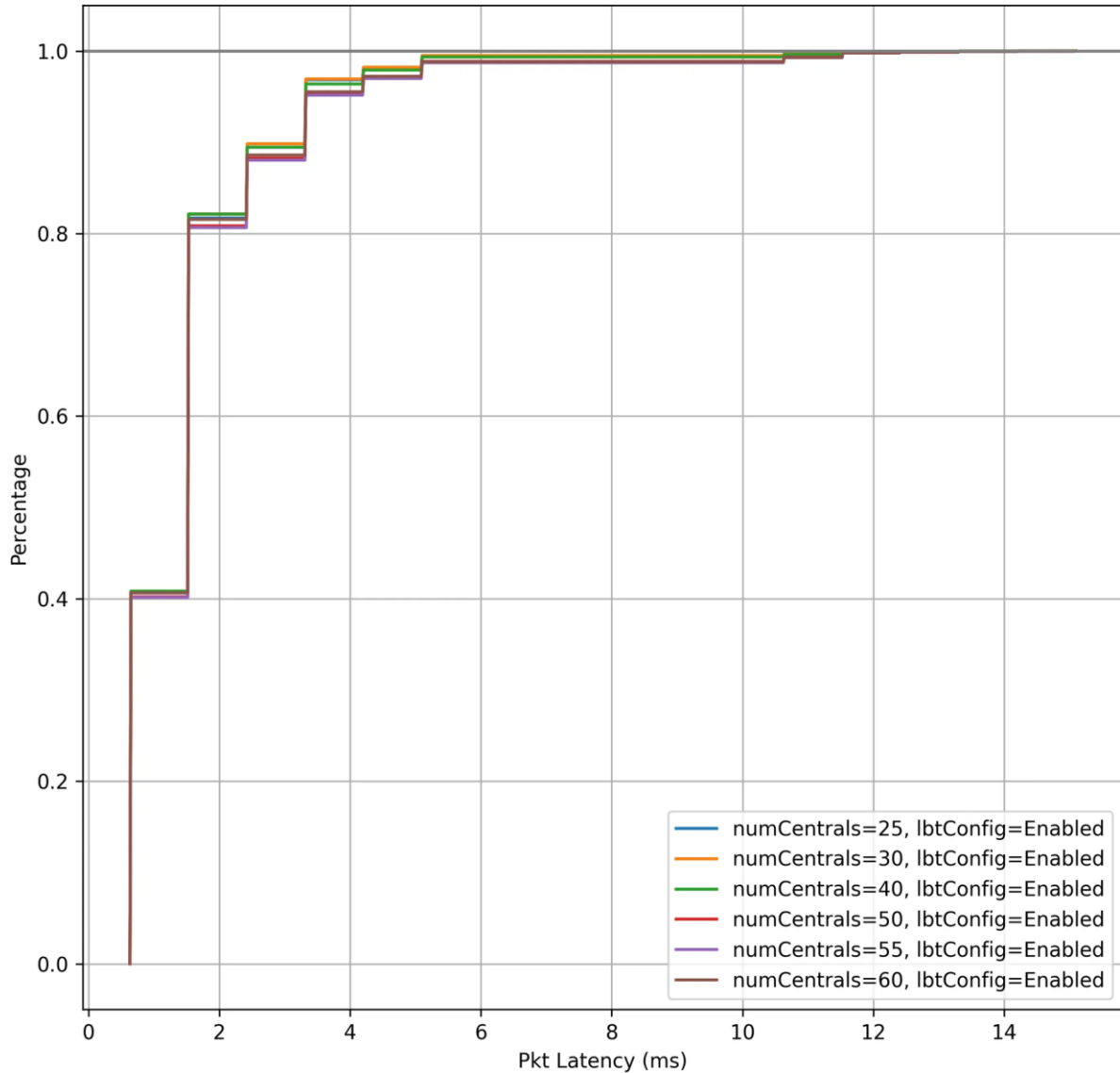
## Takeaways:

- **~27 BLE centrals can be supported due to Wi-Fi P95 latency constraints, which is worse than BLE/BLE 30 channel case, which can support around 38 BLE centrals**
- **At 50 centrals, P95 Wi-Fi burst latency is ~75ms**

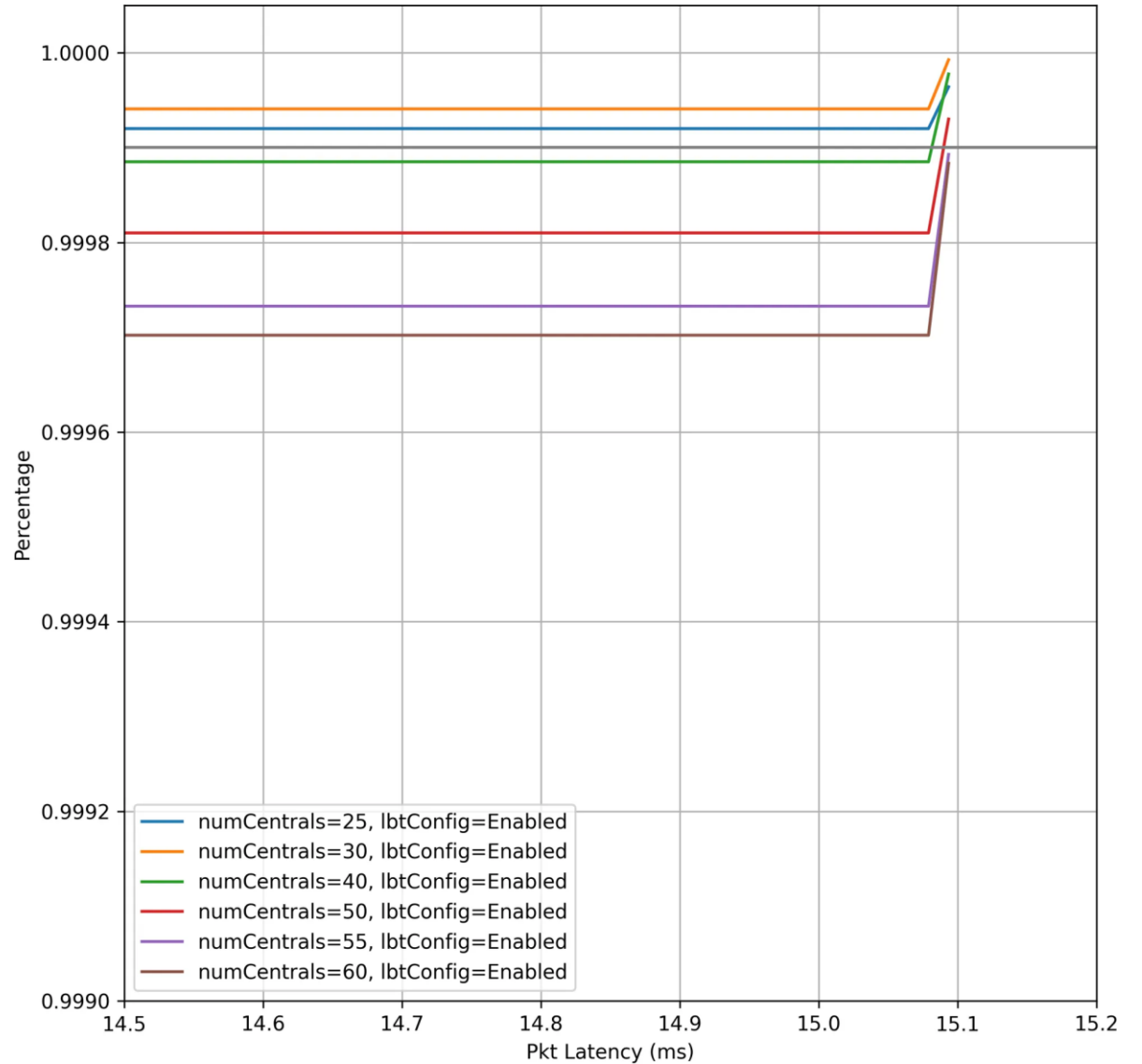
# BLE/Wi-Fi 57% Overlap Even Time Split LOS BLE Latency

\*Zoomed-in version of graph on left

CDF bleLOS:1 TX DL



CDF bleLOS:1 TX DL

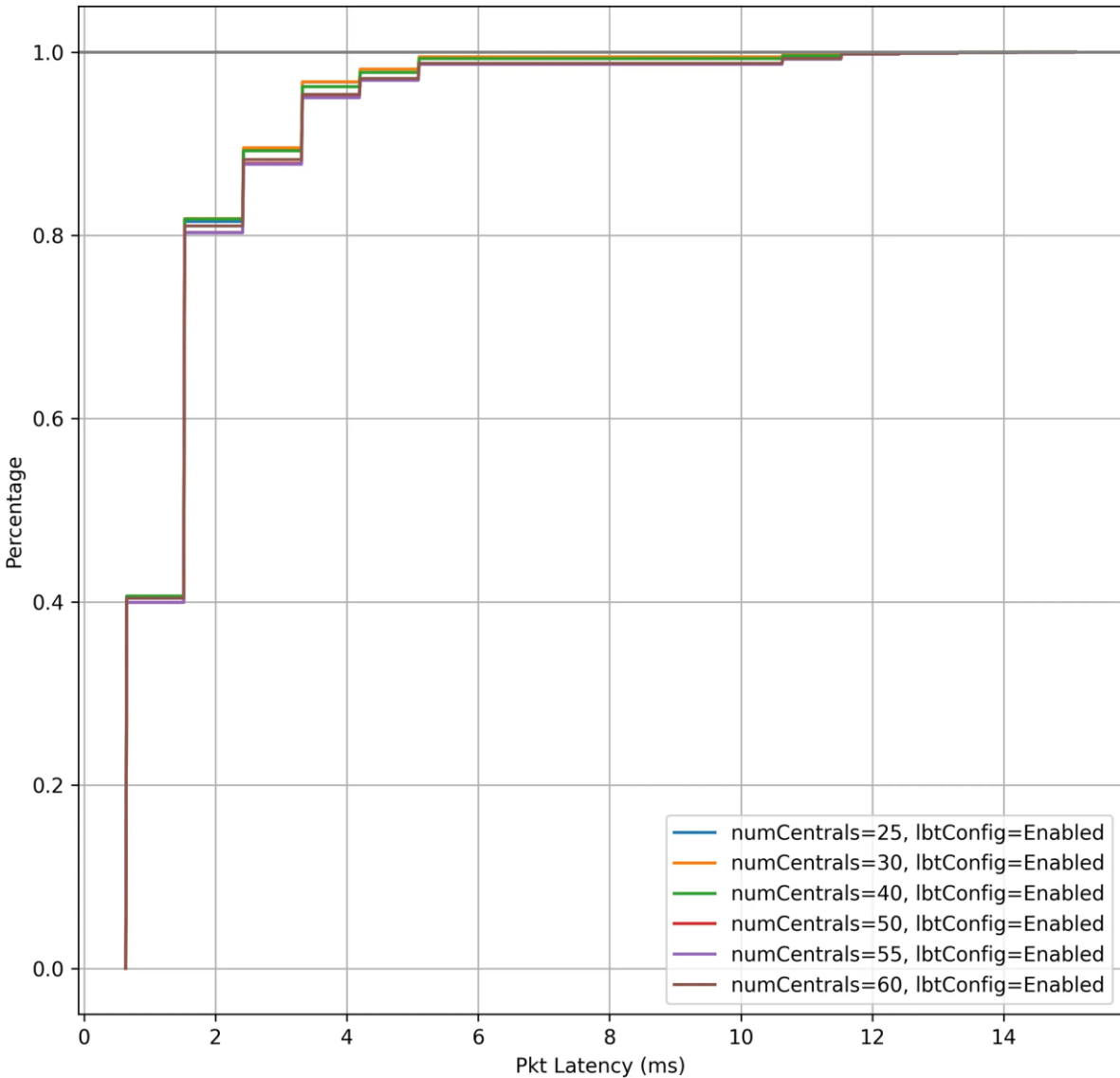




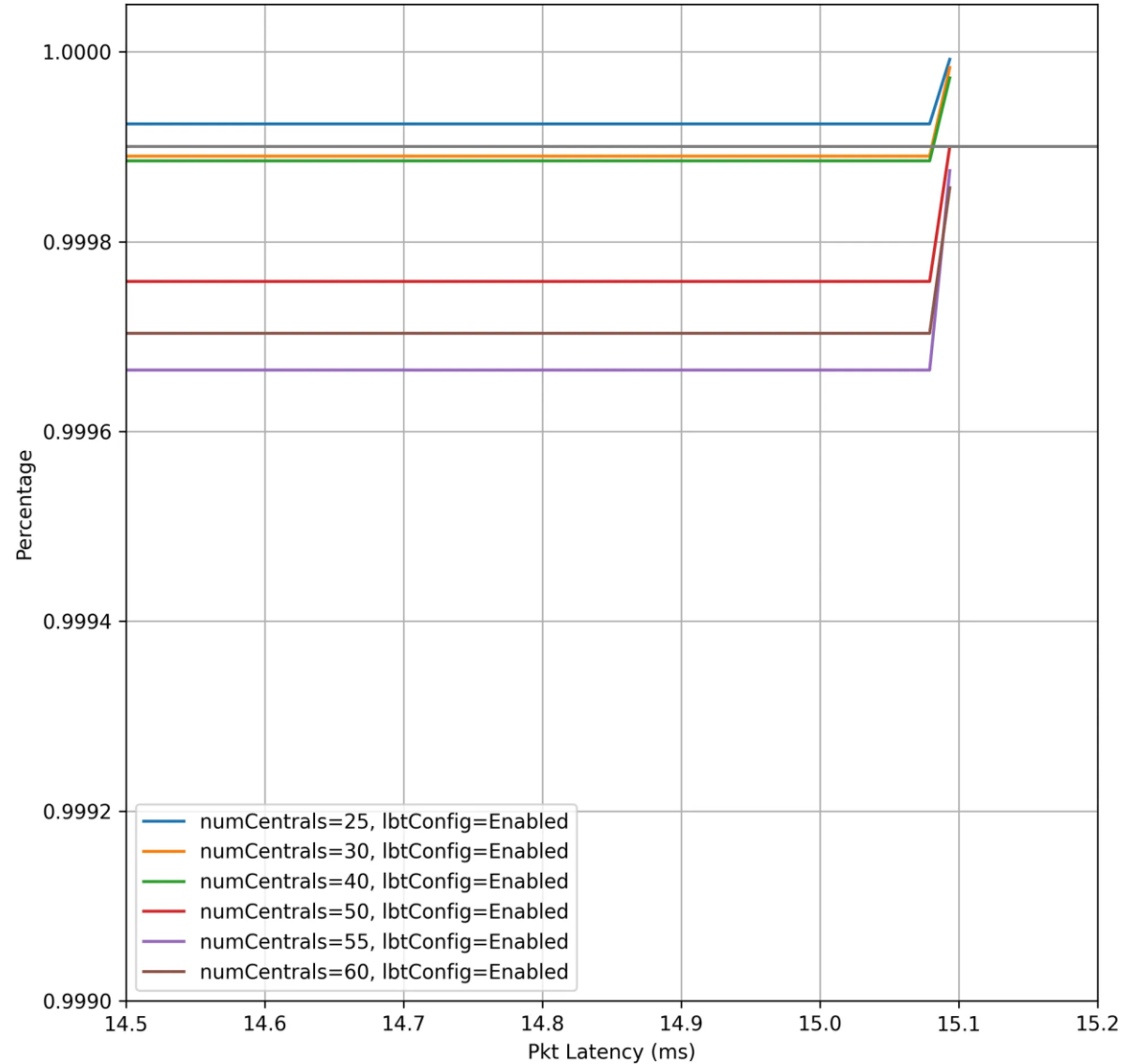
# BLE/Wi-Fi 57% Overlap Even Time Split NLOS BLE Latency

\*Zoomed-in version of graph on left

CDF bleLOS:0 TX DL

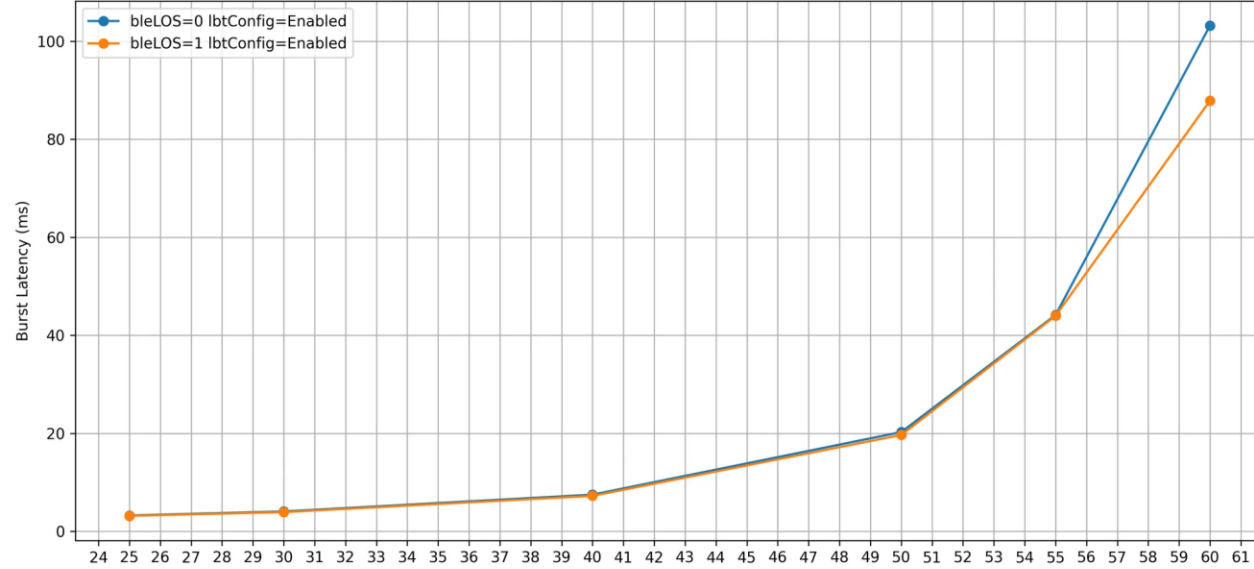


CDF bleLOS:0 TX DL

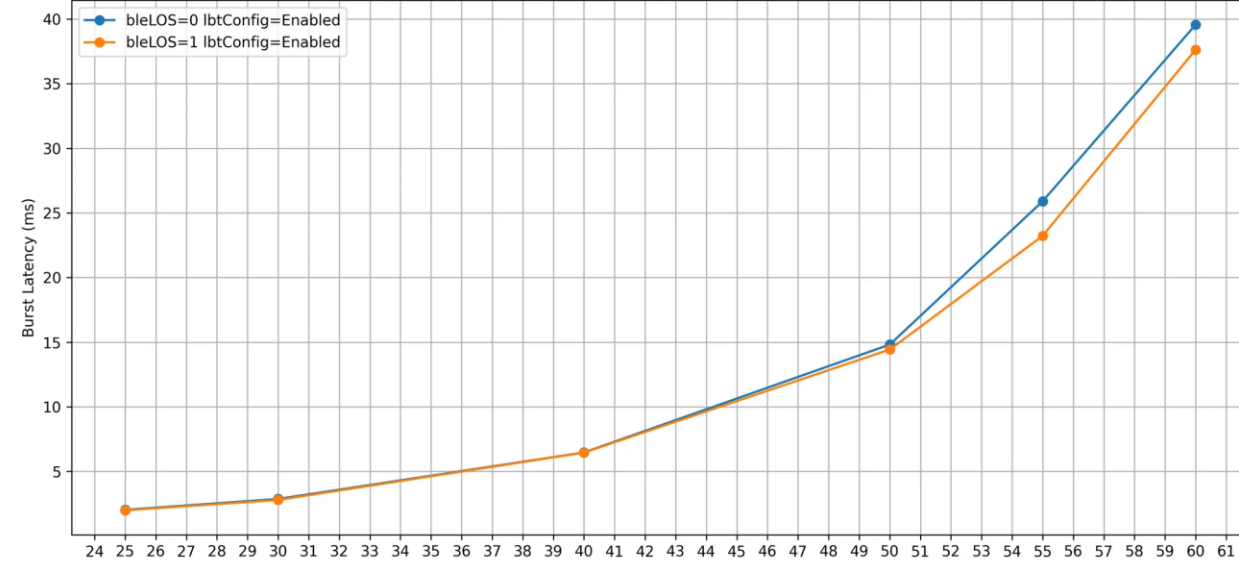


# BLE/Wi-Fi 57% Even Time Split Overlap Wi-Fi Latency

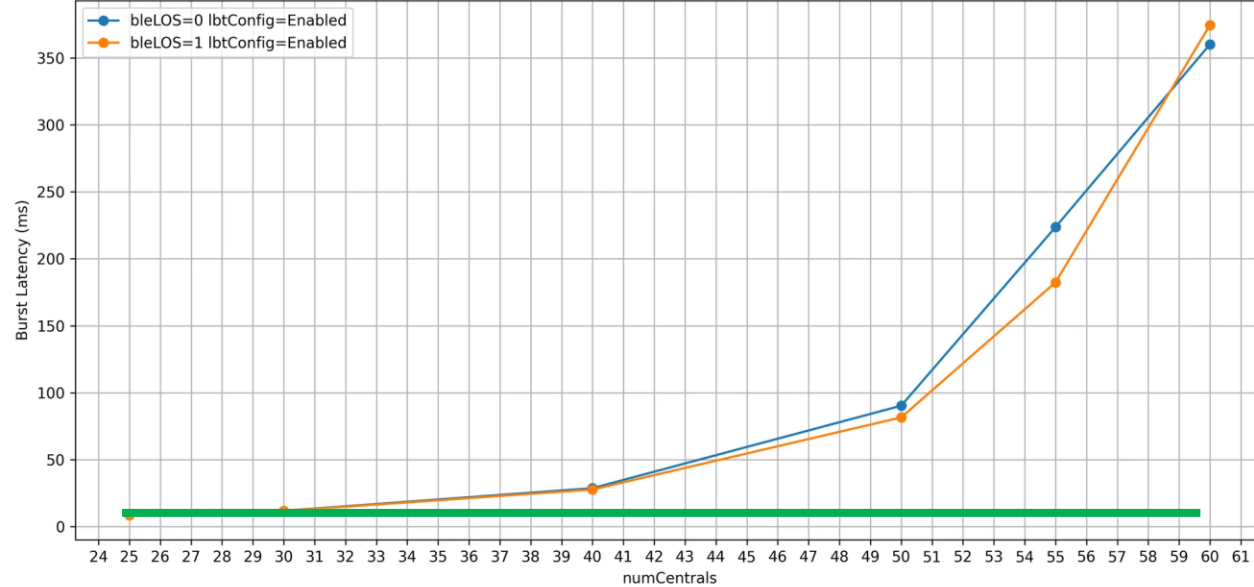
Percentile BTX DL  
0.5 Percentile



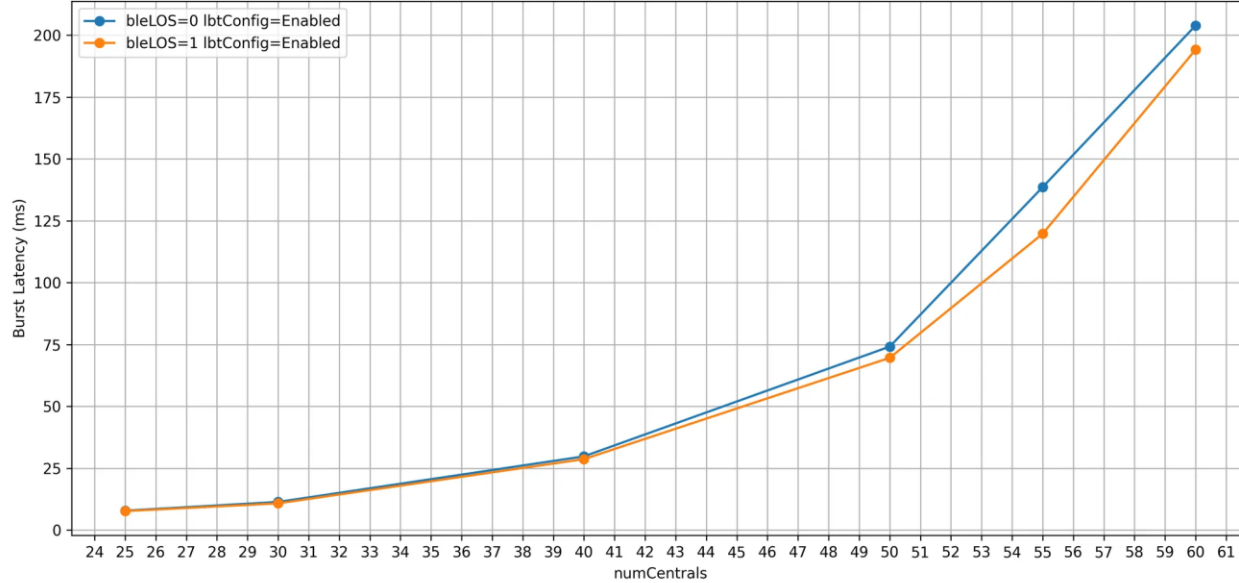
Percentile BTX UL  
0.5 Percentile



0.95 Percentile



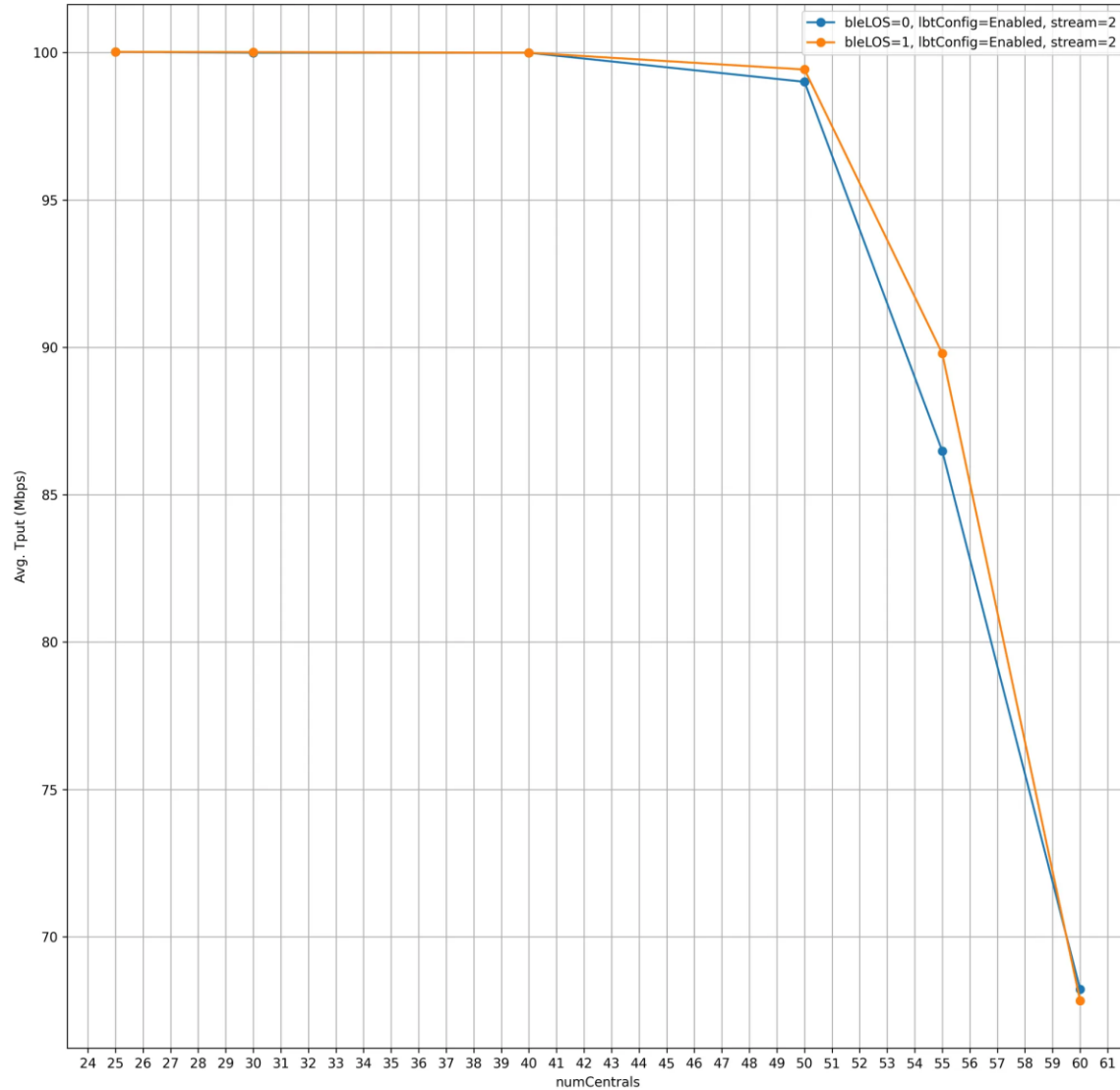
0.95 Percentile



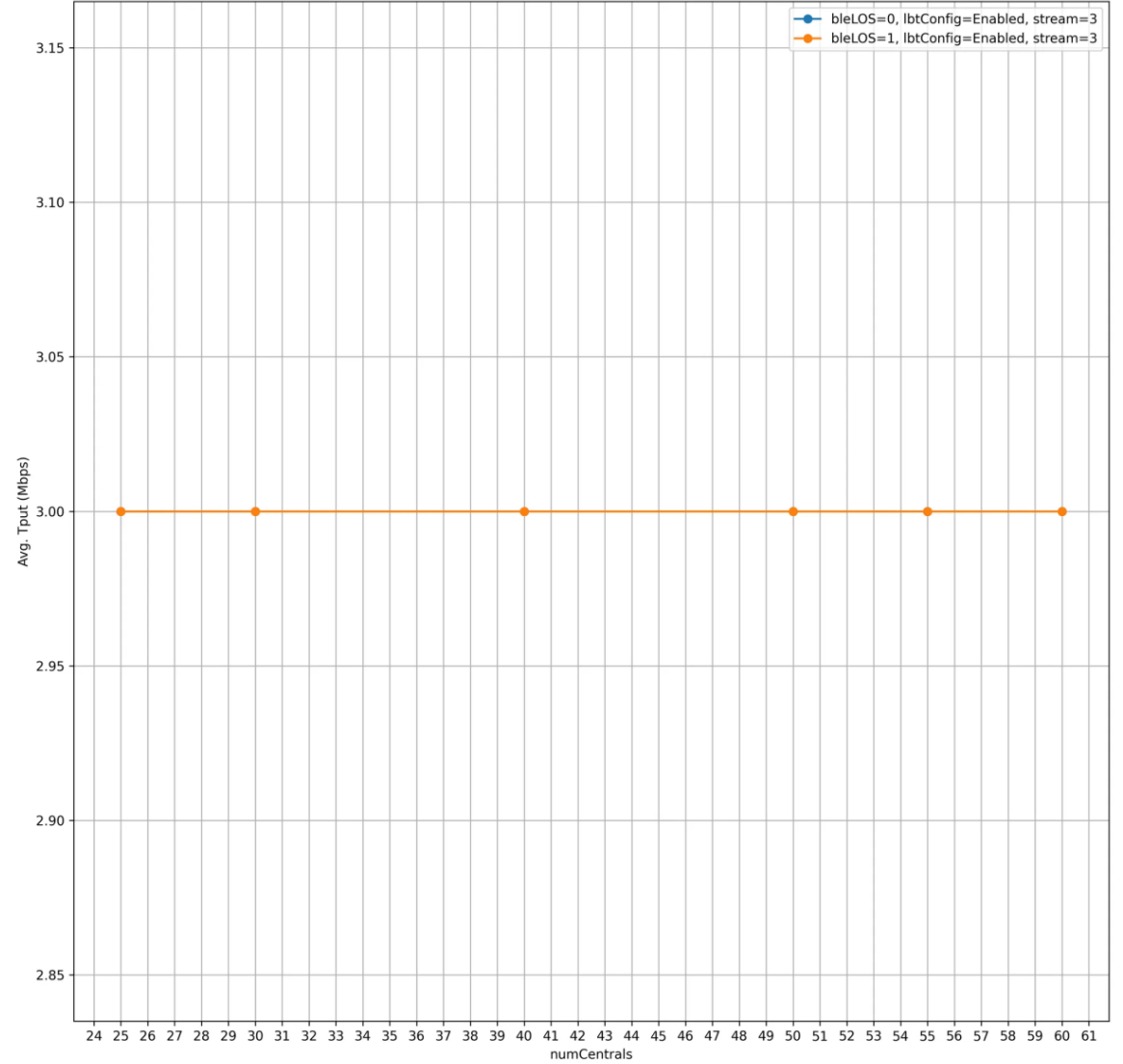
# BLE/Wi-Fi 57% Overlap Even Time Split Wi-Fi Throughput

Note that the y-axis is very small for both graphs

Average Throughput DL



Average Throughput UL



Case 3 BLE/Wi-Fi 57% Overlap with  
21%CU, CU information available to BLE

# 70 Channel BLE/Wi-Fi 57% Overlap

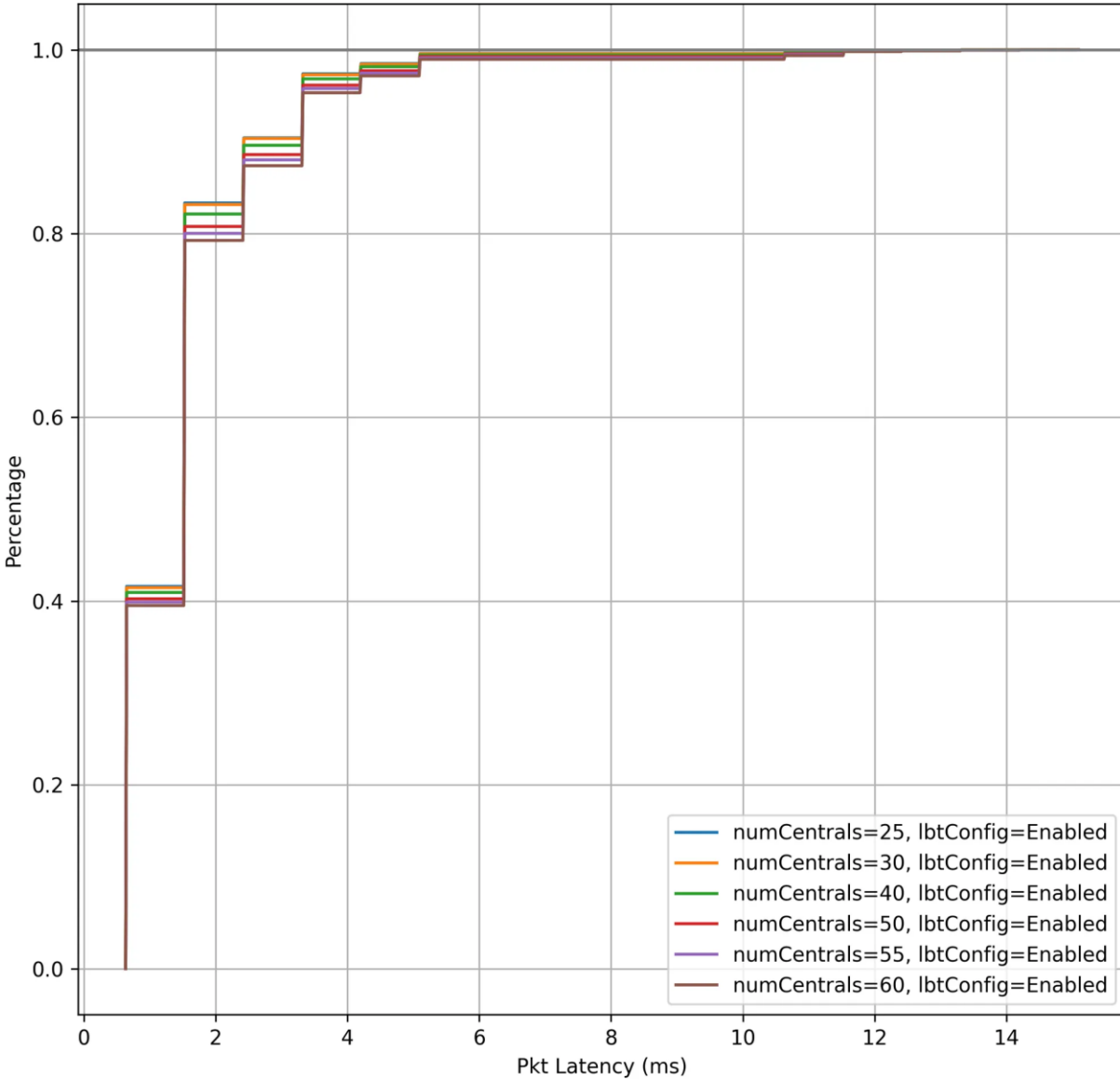
- Exact same as previous results but instead clear channels used at a ratio of 2:1 compared to Wi-Fi channels

## Takeaways:

- **~30% improvement in BLE links** over BLE/BLE case in both LOS/NLOS cases
- Smooth Wi-Fi latency degradation as the number of centrals is increased
  - Even at 50 centrals, P95 burst latency is < 20 ms, which is ~4x better than the previous case.
- **Applying CU information allows for ~40% increase in BLE centrals as the supported number goes from 27 to 37.**

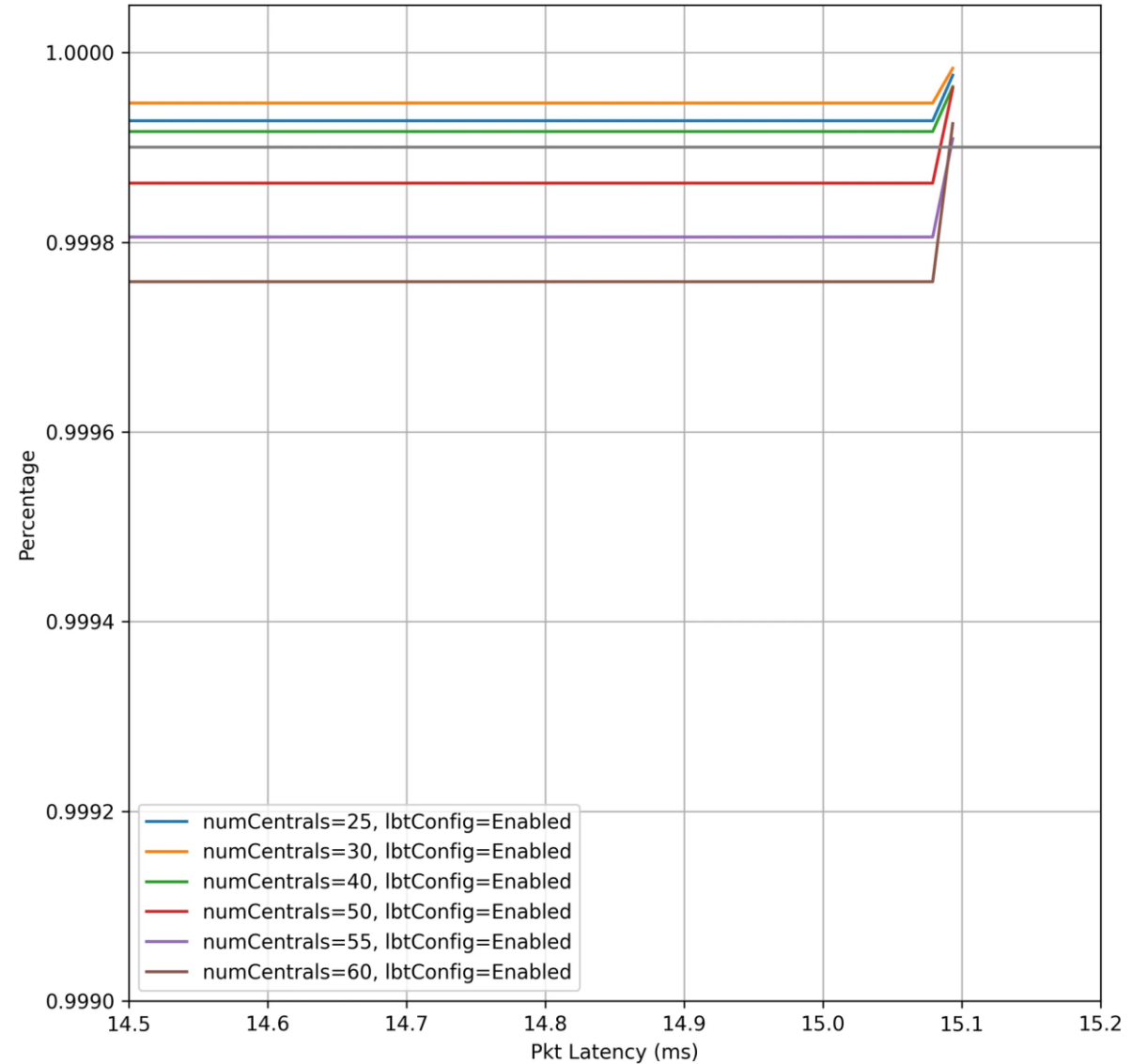
# BLE/Wi-Fi 57% Overlap LOS BLE Latency

CDF bleLOS:1 TX DL



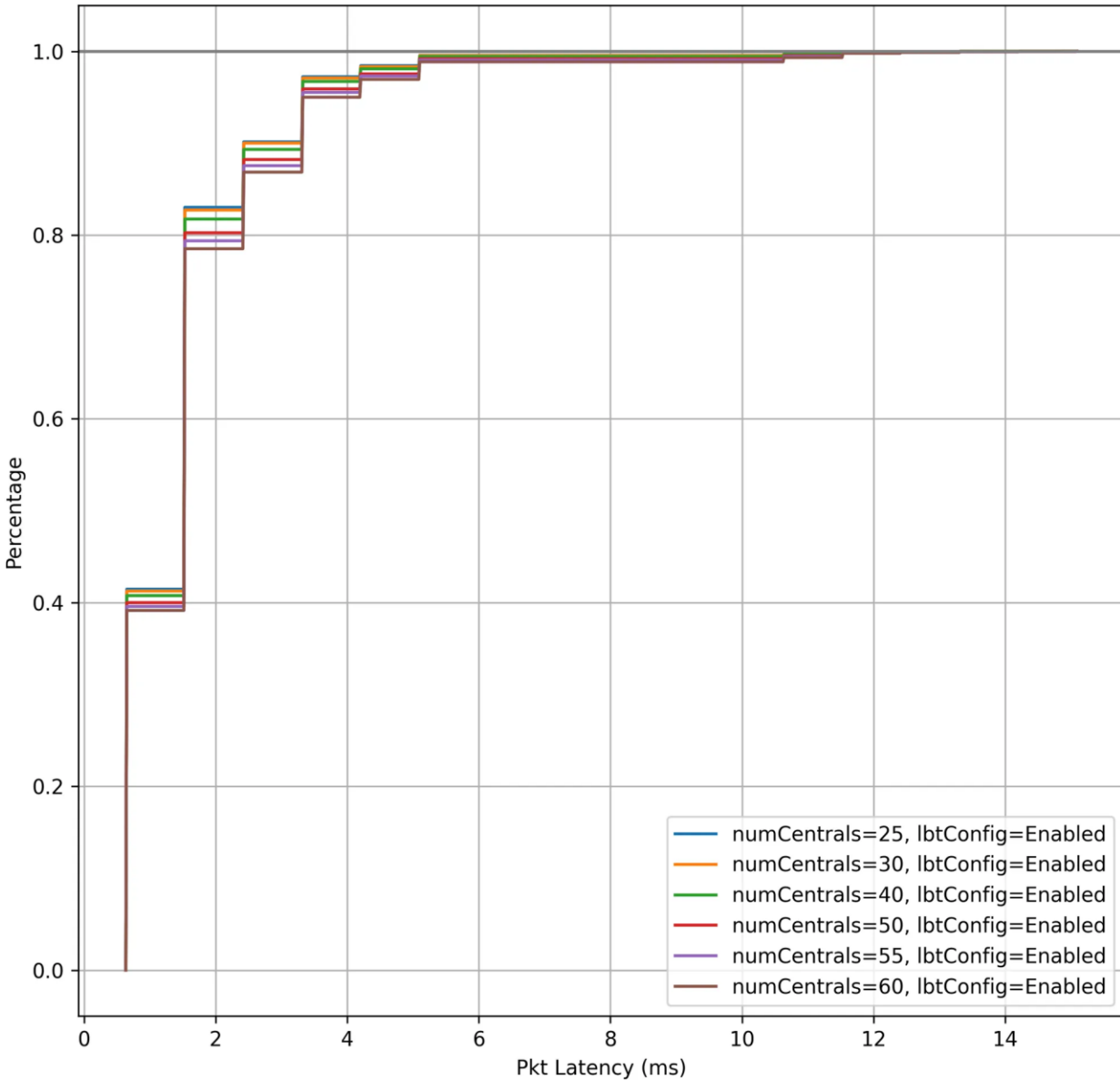
\*Zoomed-in version of graph on left

CDF bleLOS:1 TX DL



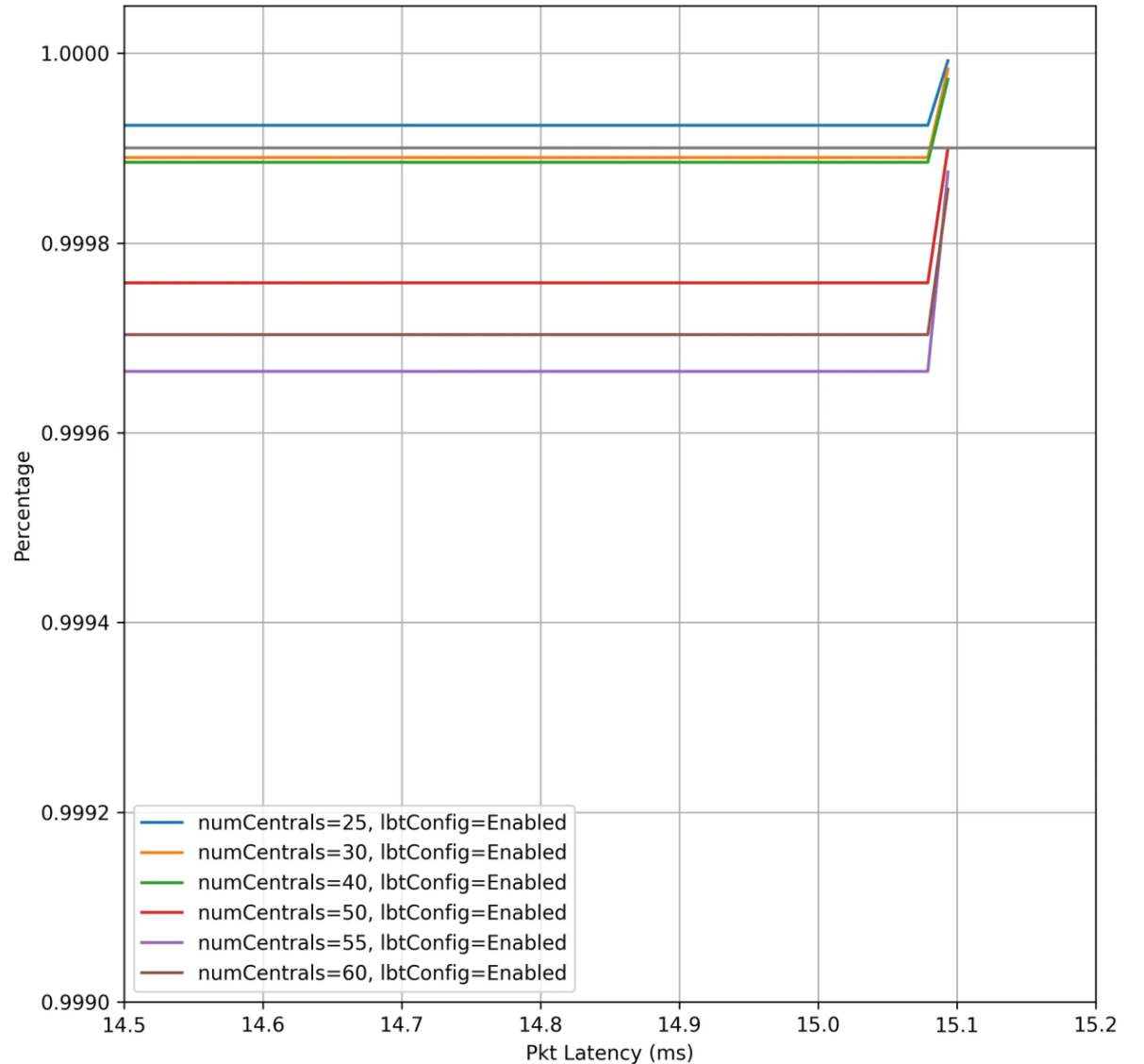
# BLE/Wi-Fi 57% Overlap NLOS BLE Latency

CDF bleLOS:0 TX DL



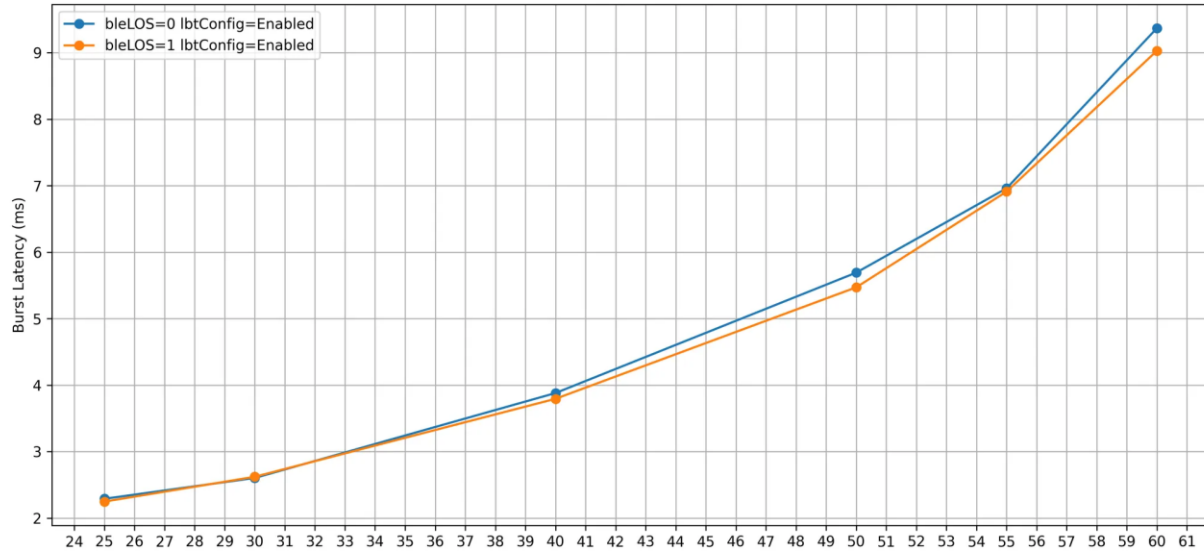
\*Zoomed-in version of graph on left

CDF bleLOS:0 TX DL

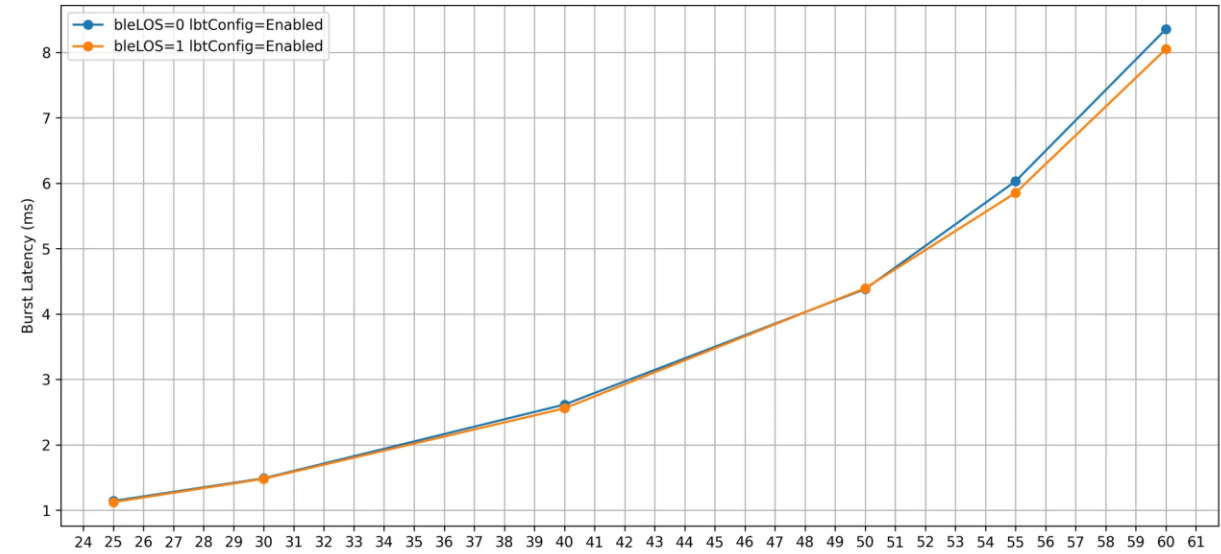


# BLE/Wi-Fi 57% Overlap Wi-Fi Latency

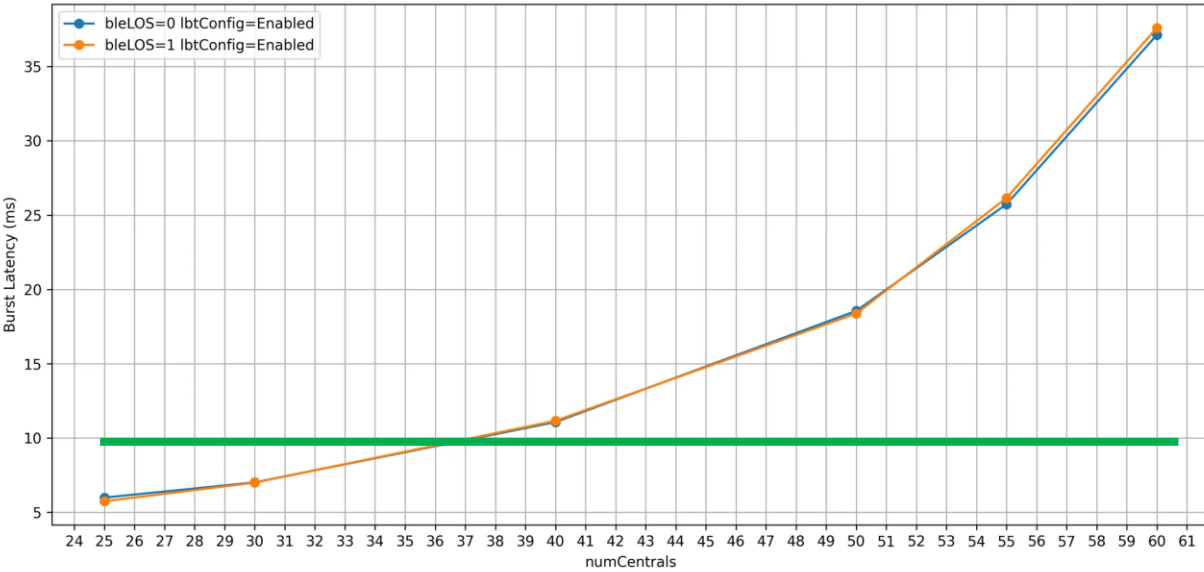
Percentile BTX DL  
0.5 Percentile



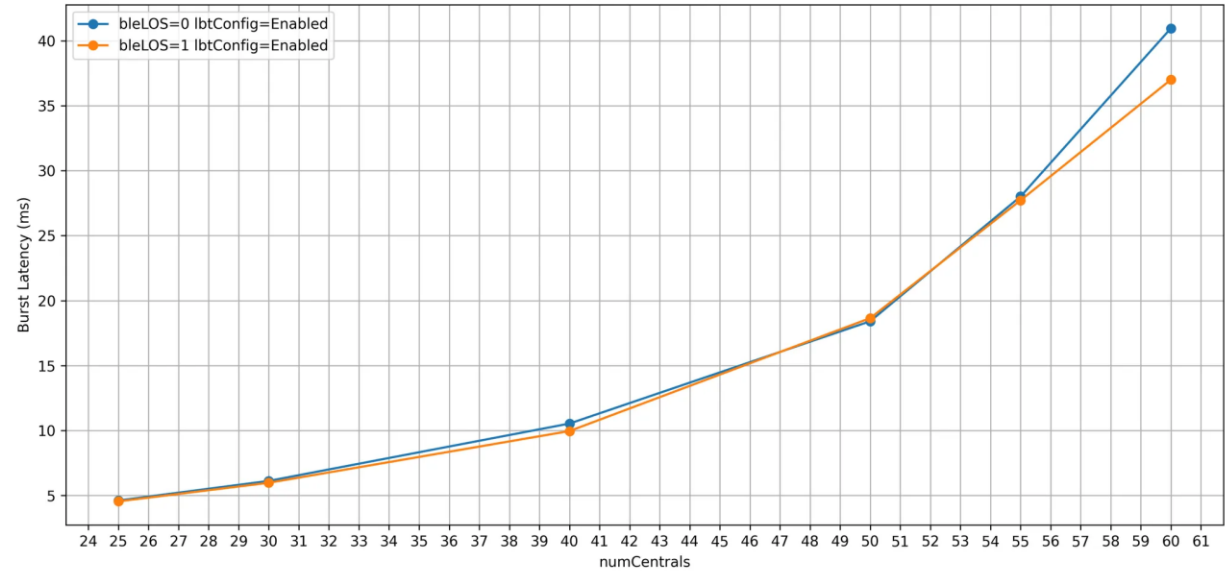
Percentile BTX UL  
0.5 Percentile



0.95 Percentile



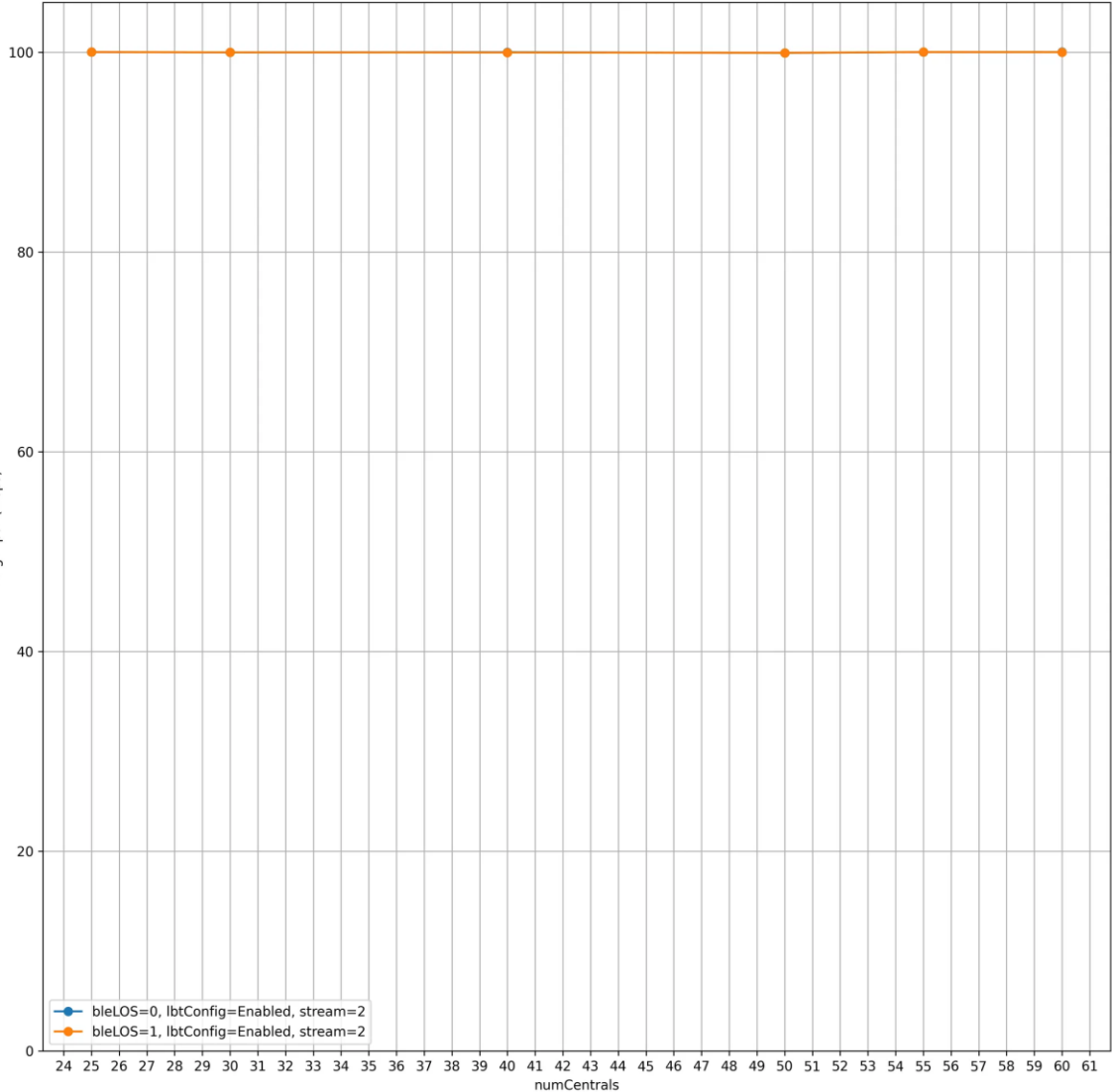
0.95 Percentile



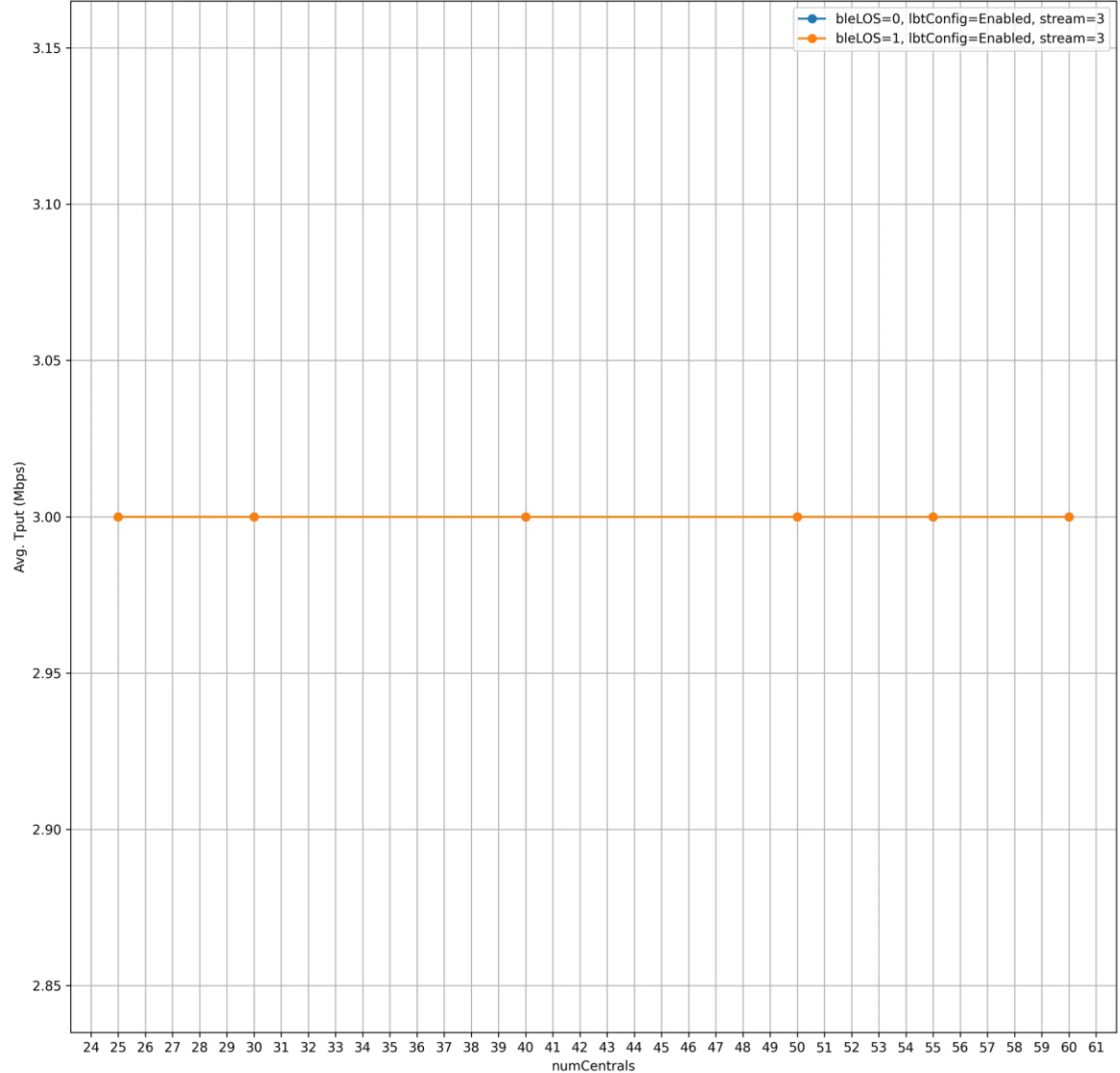


# BLE/Wi-Fi 57% Overlap Wi-Fi Throughput

Average Throughput DL



Average Throughput UL



# Summary of 21% CU Results

- The table below shows the number of central devices supported for LOS/NLOS configurations

LOS/NLOS	30 channels (BLE only)	70 channels + CU unavailable	70 channels + CU available
BLE	39/37	53/50	>60/60
Wi-Fi (10ms DL P95 latency)		27/27	37/37

From a BLE only perspective, adding 40 channels with CU information gains ~60% capacity (over 30 channel case)

From a Wi-Fi perspective, adding CU information gains ~40% capacity

# Conclusions

- LBT should be made mandatory to help BLE/BLE use case.
- Primary channels are used first and through appropriate offloading, the least occupied Wi-Fi channels should be used to minimize interference between the two technologies.
- An accurate scan allows the BLE device to distinguish between low-CU and high-CU Wi-Fi channels
- Low-CU Wi-Fi channels should not be completely avoided by BLE, but appropriately used instead
  - CU information from scans can be used to determine how often to visit the low-CU Wi-Fi channels. If properly used, a higher total number of BLE devices can be accommodated.
  - Not using the CU information appropriately makes performance worse for Wi-Fi.
- High-CU (e.g. ~60%) Wi-Fi channels should not be used by BLE (see appendix Cases 4 and 5) as it is detrimental for both BLE and Wi-Fi.

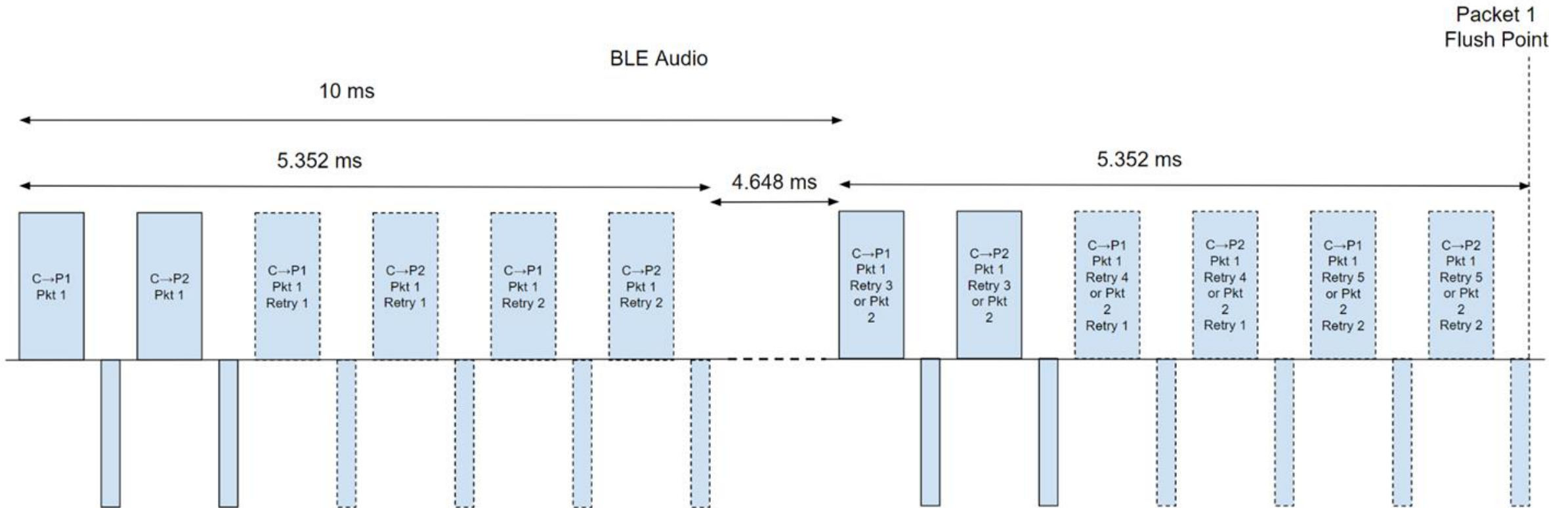
# Appendix

Author(s):

Presentation Type:

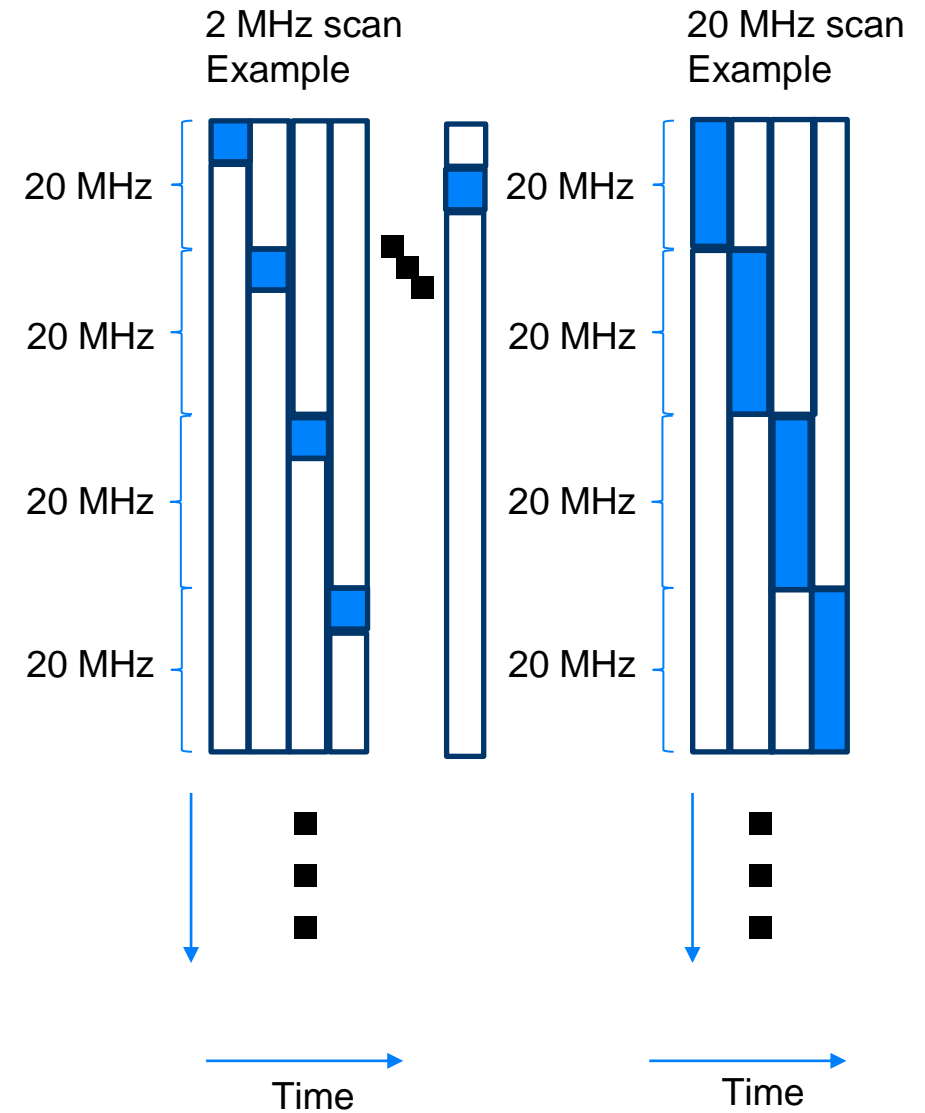
Date Submitted:

# BLE Audio profile (channel switch happens after Ack)



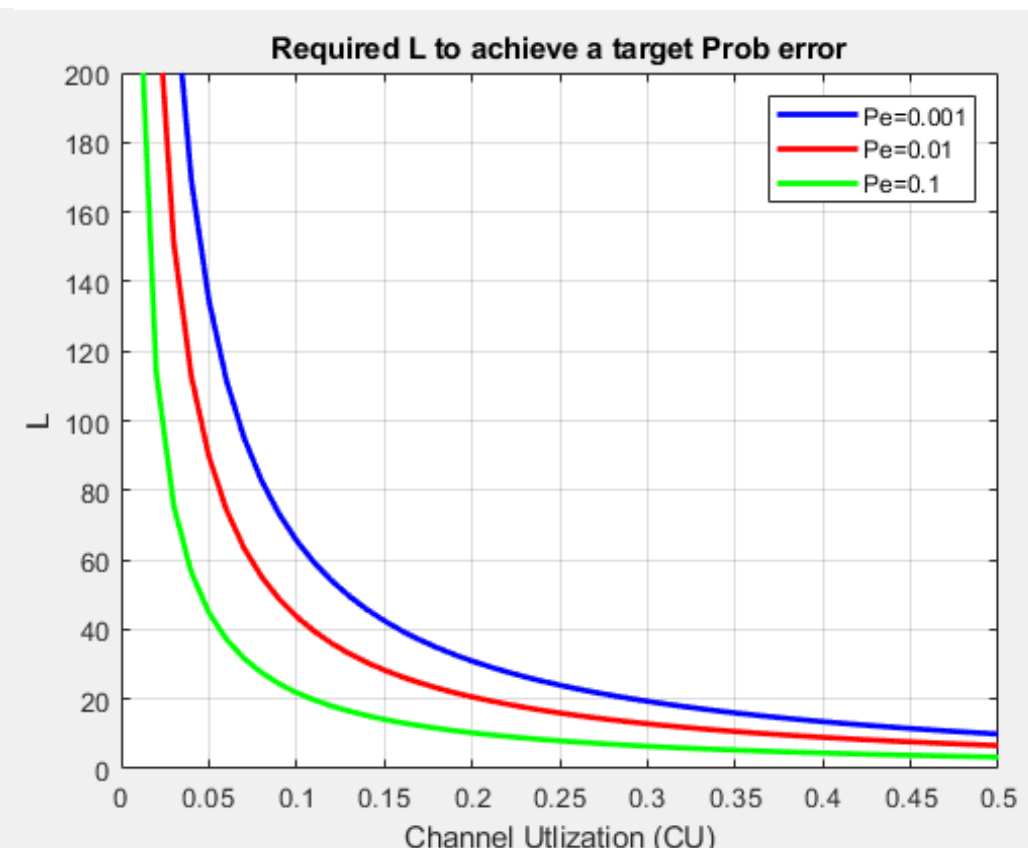
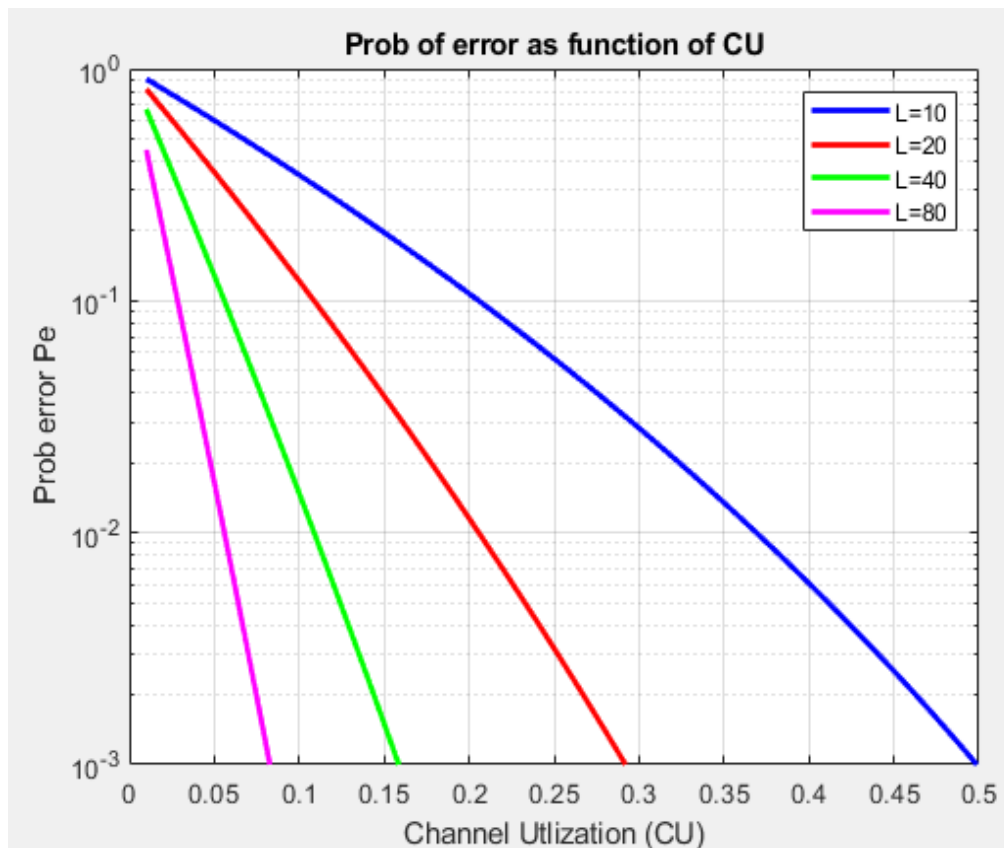
# Initial Scan to detect Wi-Fi

- UNII-1 (80 MHz), UNII-3 (100 MHz), and UNII-5 (480 MHz)
- Assume switching time is 150us and 25us scan on each channel
- 2 options: 2 MHz scan and 20 MHz scan
  - 2 MHz : 330 channels
    - 1 round scanning all channels takes 57.75ms
    - 44 rounds at each channel takes **2.541s**
      - Reducing switching to 75/50/25us reduces this to 1452/1089/726 ms
  - 20 MHz : 33 20 MHz channels
    - 1 round scanning all channels takes 5.775ms
    - 44 rounds at each channel takes 254.1 ms
      - Reducing switching to 75/50/25us reduces this to 145.2/108.9/72.6 ms



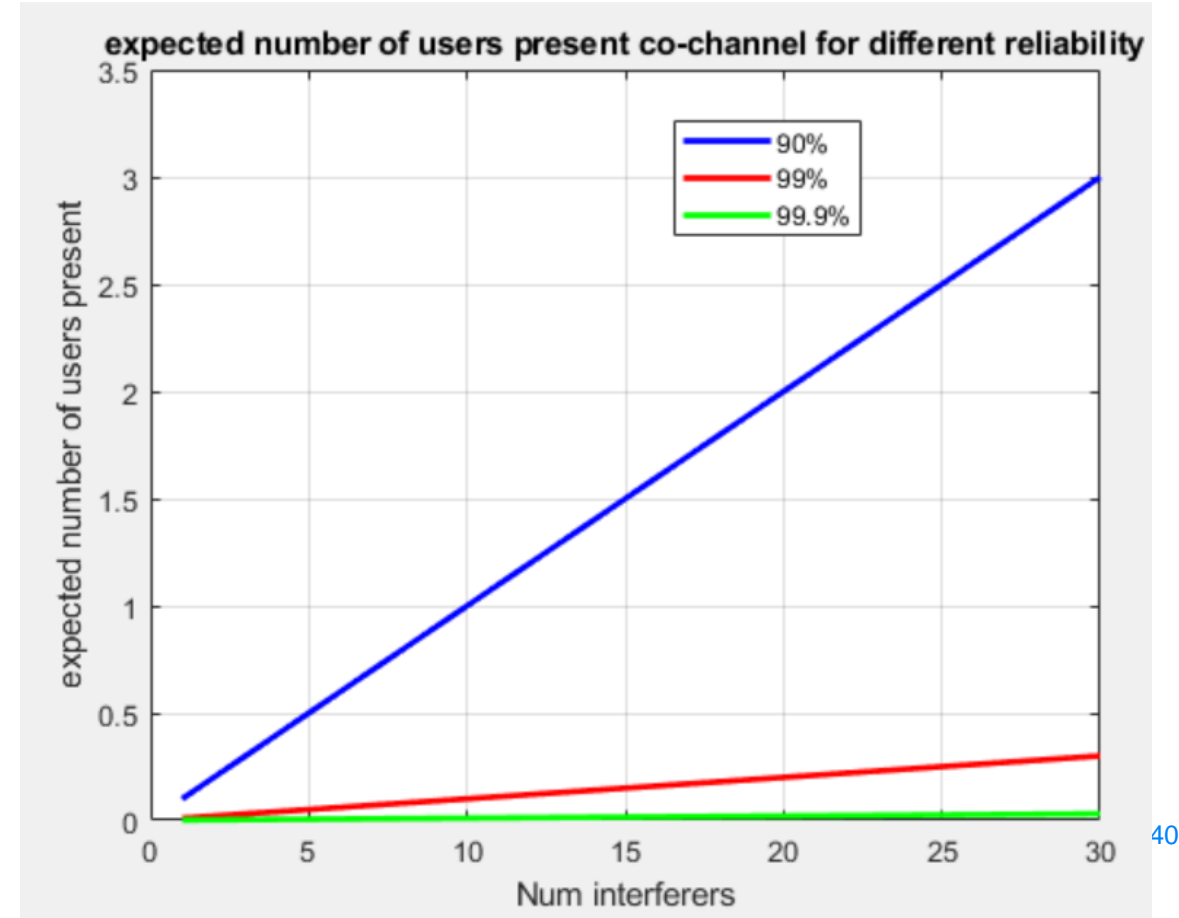
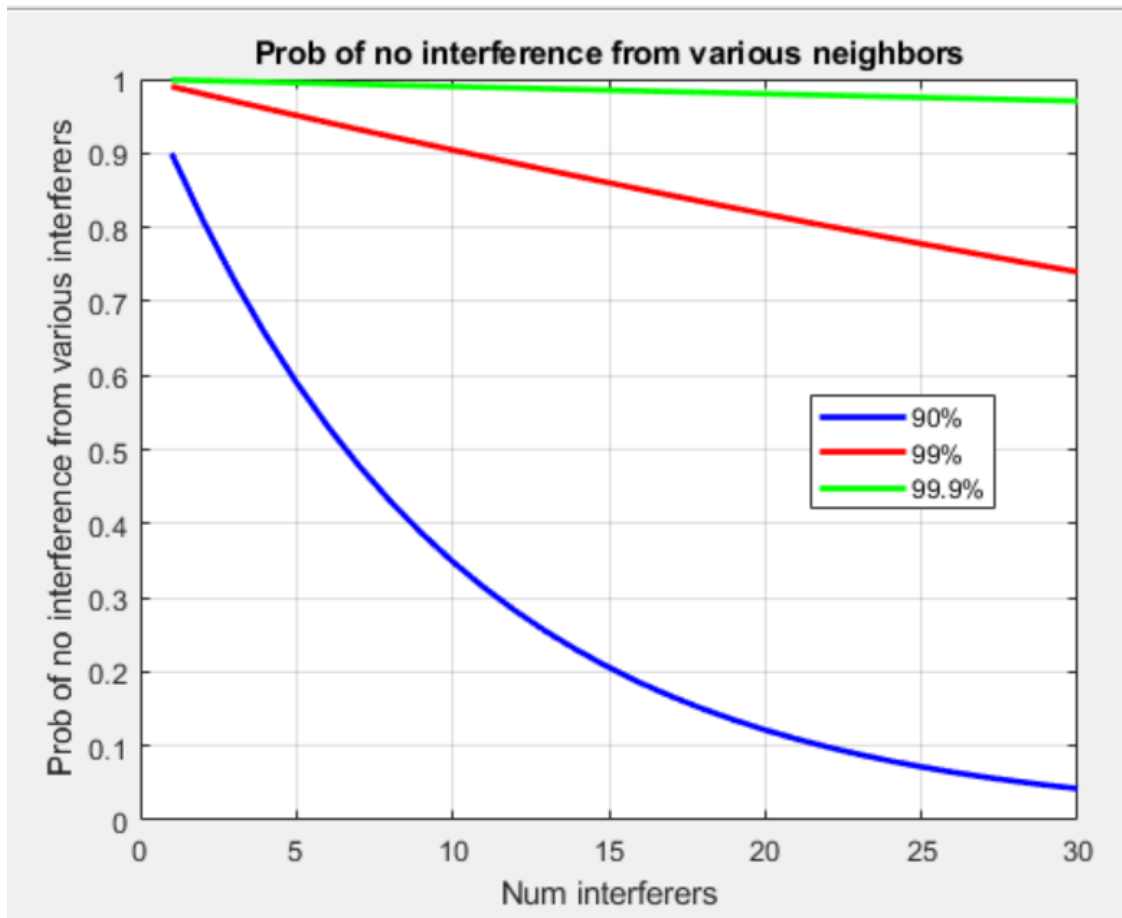
# Prob of declaring channel is free when it is not

- Assume there are  $L$  rounds, each is independent
- Prob of missing traffic =  $P_e = (1 - CU)^L$  where  $CU$  = channel utilization and is between 0 and 1, or  $L = \log_{(1-CU)} P_e$ .



# Target level of certainty for initial scan

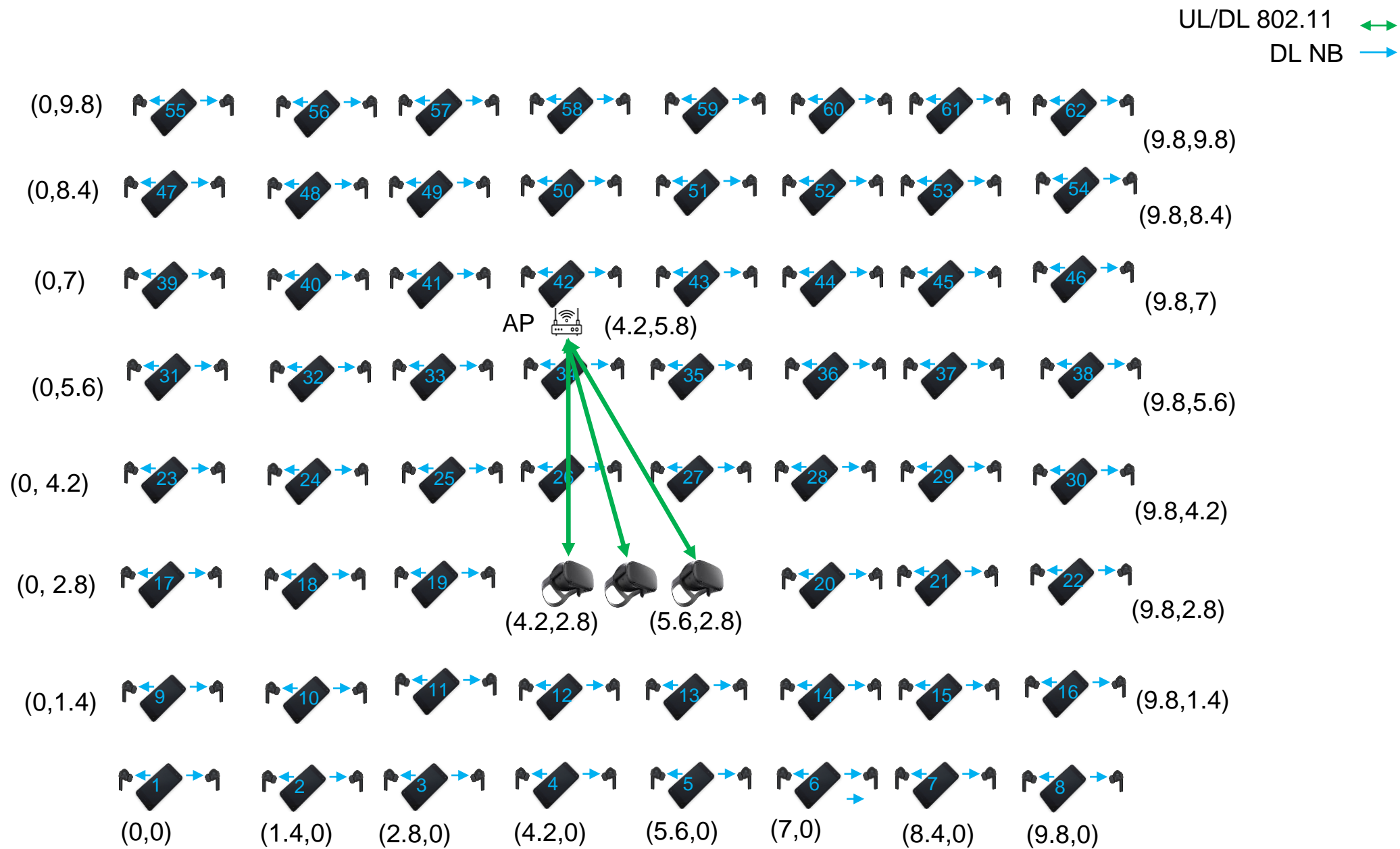
- (Left) Prob of no interference =  $(1 - p)^N$  where  $p = 0.1, 0.01, 0.001$
- (Right) Expected Number of Interferers present =  $\sum_{k=1}^N k \binom{N}{k} p^k (1 - p)^{N-k}$





Case 4: BLE/Wi-Fi 57% Overlap with 63%  
CU,  
CU information available to BLE

# 3 STA Scenario



# 70 Channel BLE/Wi-Fi 57% Overlap 63% CU

1 AP, 3 STAs, each running same 100 Mbps DL and 3 Mbps UL, resulting in ~63% channel utilization (CU)

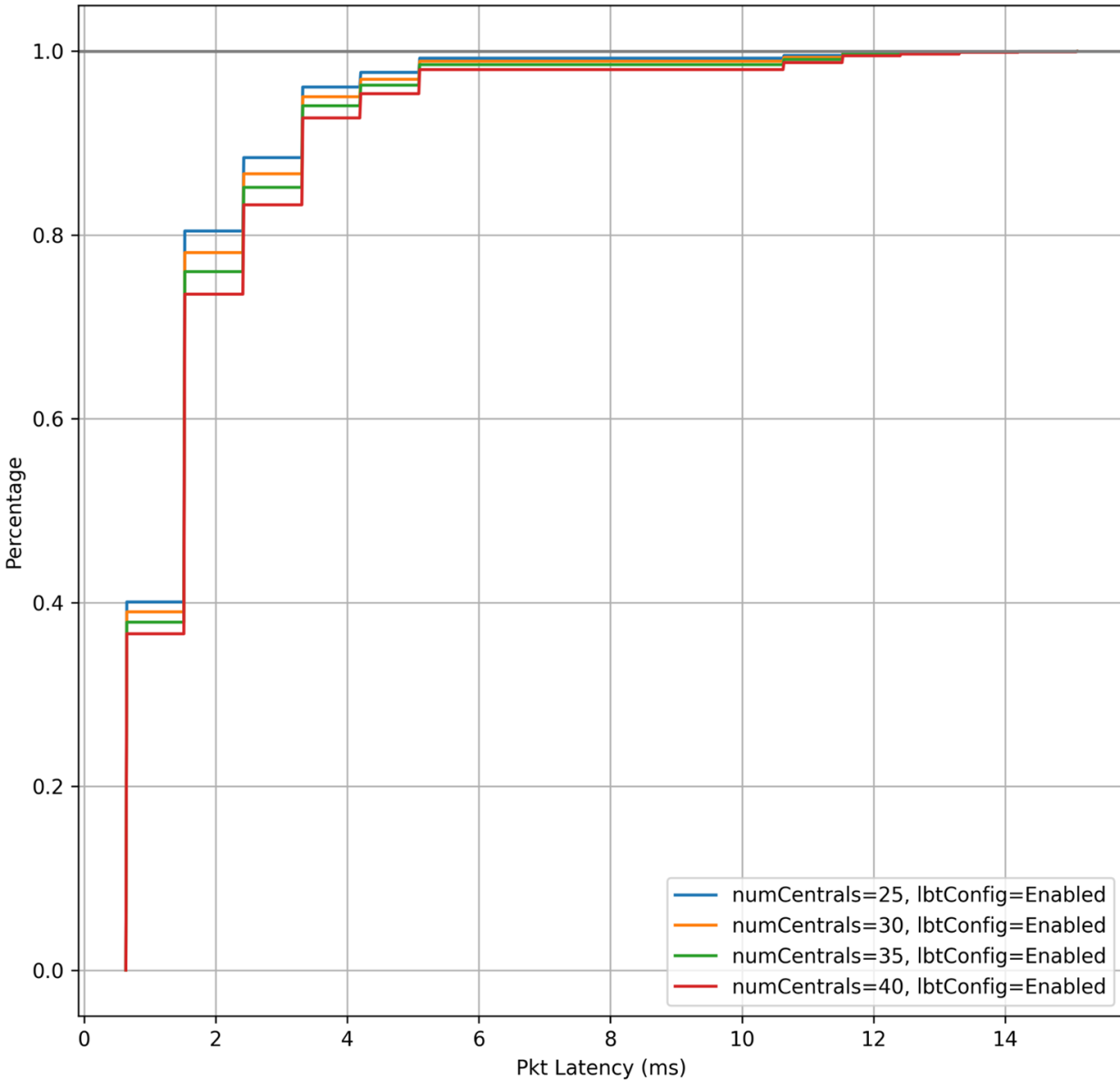
Examines only LBT in both LOS and NLOS scenarios

- No LBT causes unacceptable Wi-Fi degradation

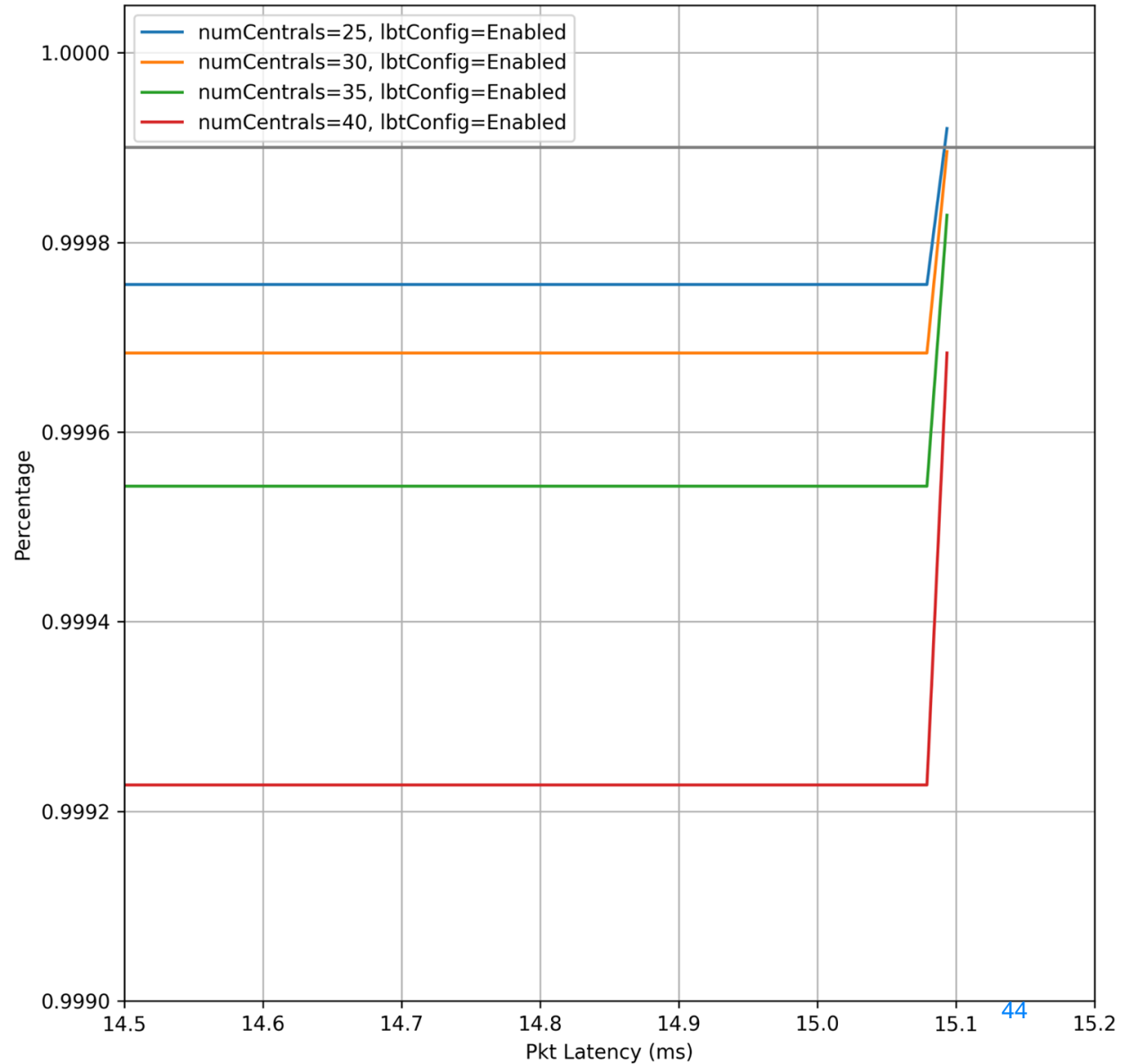
Clear channels used at a ratio of 37:1 compared to Wi-Fi channels

# BLE/Wi-Fi 57% Overlap 63% CU LOS BLE Latency

CDF bleLOS:1 TX DL

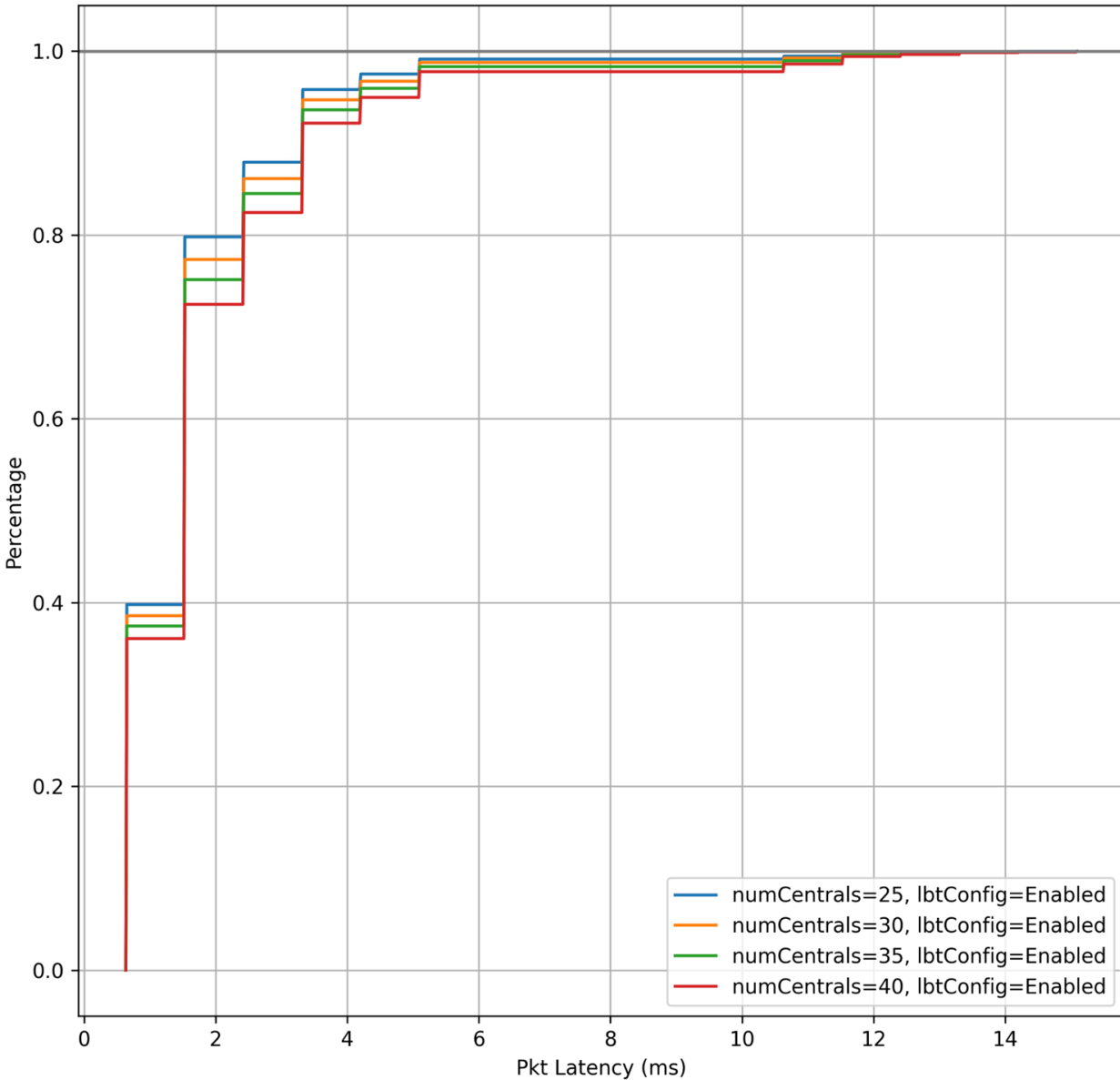


\*Zoomed-in version of graph on left CDF bleLOS:1 TX DL

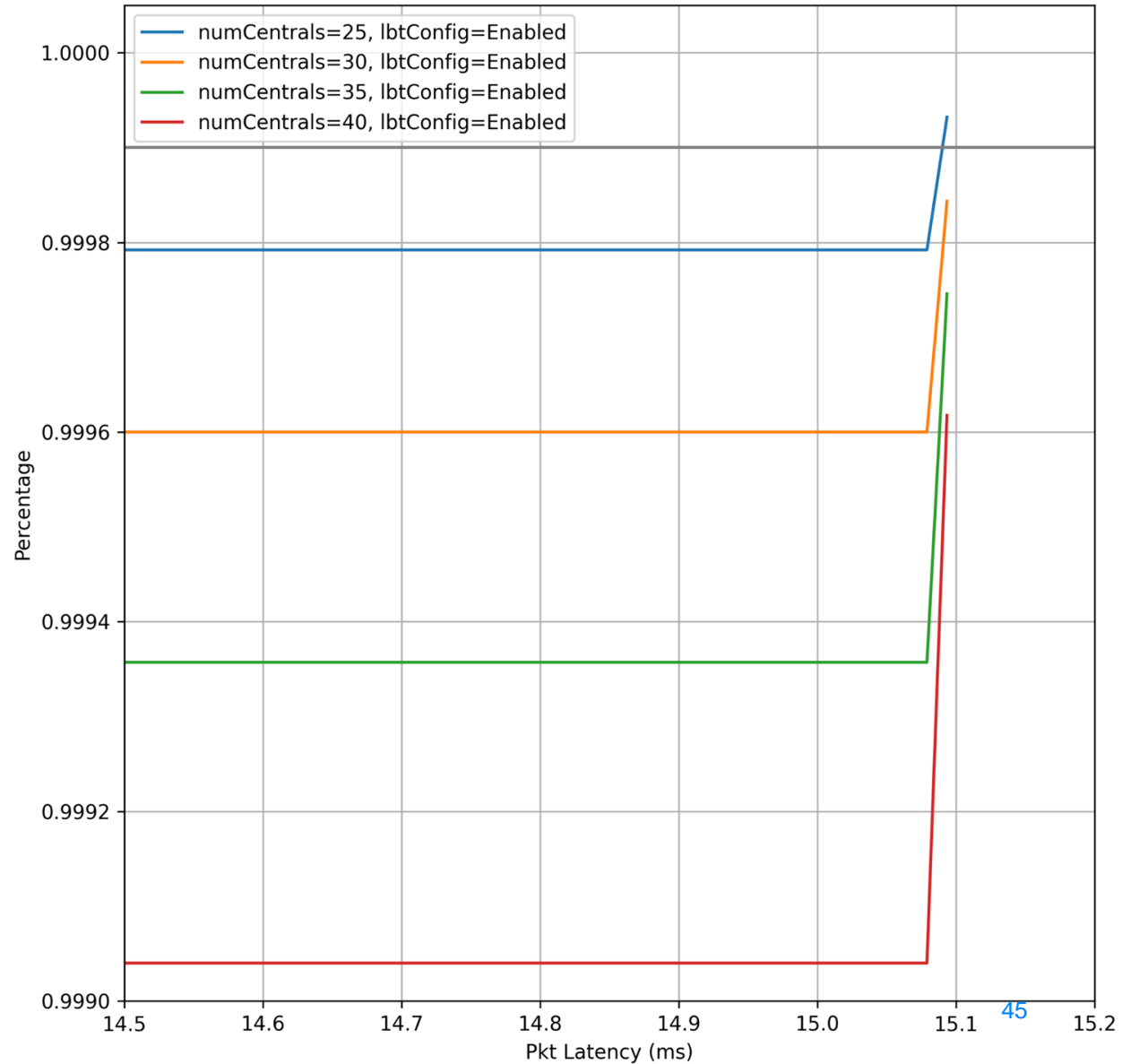


# BLE/Wi-Fi 57% Overlap 63% CU NLOS BLE Latency

CDF bleLOS:0 TX DL

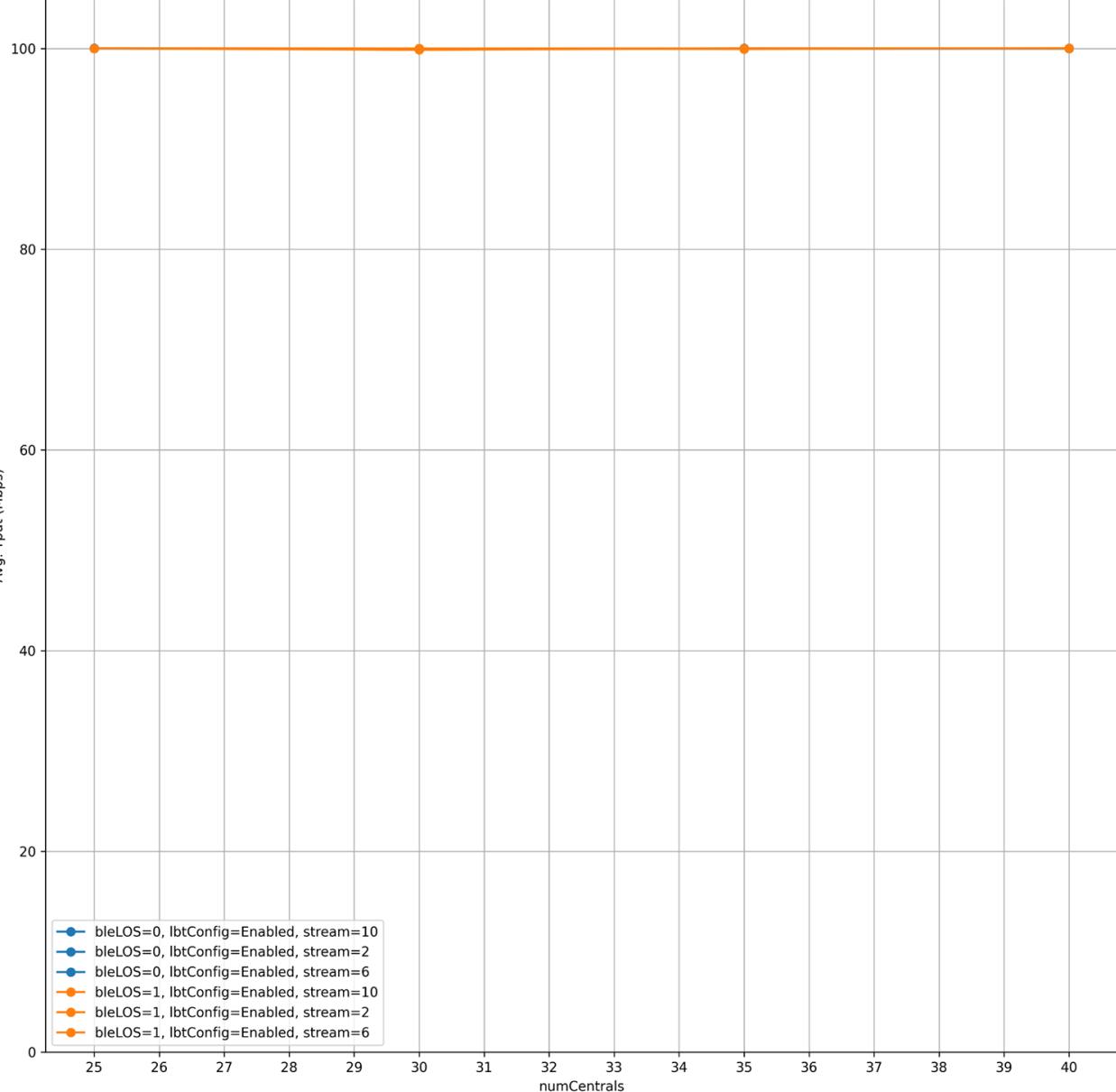


\*Zoomed-in version of graph on left CDF bleLOS:0 TX DL

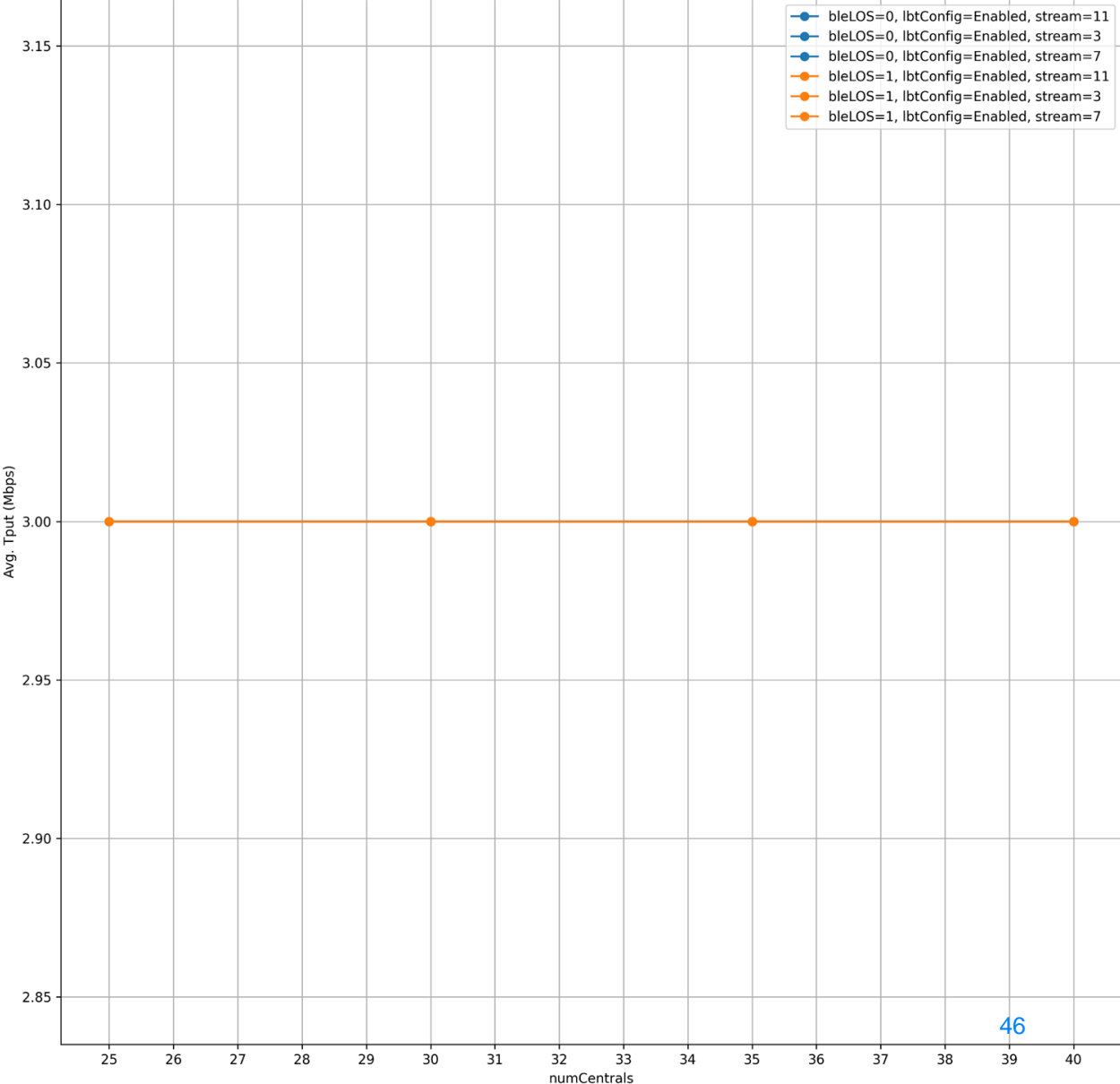


# BLE/Wi-Fi 57% Overlap 63% CU Wi-Fi Throughput

Average Throughput DL



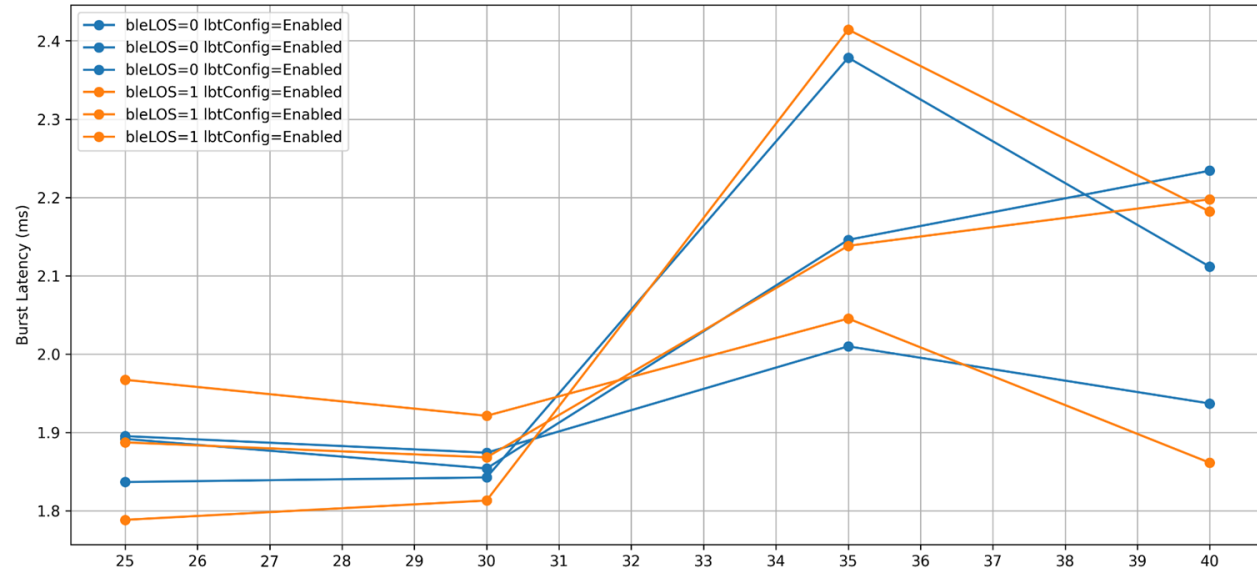
Average Throughput UL



# BLE/Wi-Fi 57% Overlap 63% CU Wi-Fi Latency

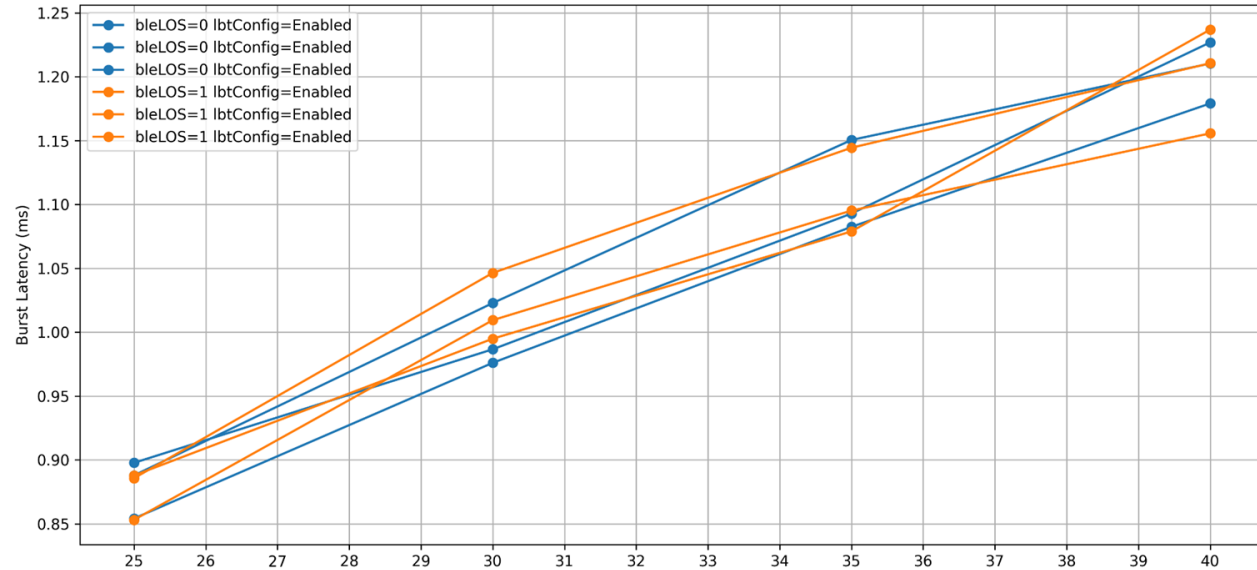
Percentile BTX DL

0.5 Percentile

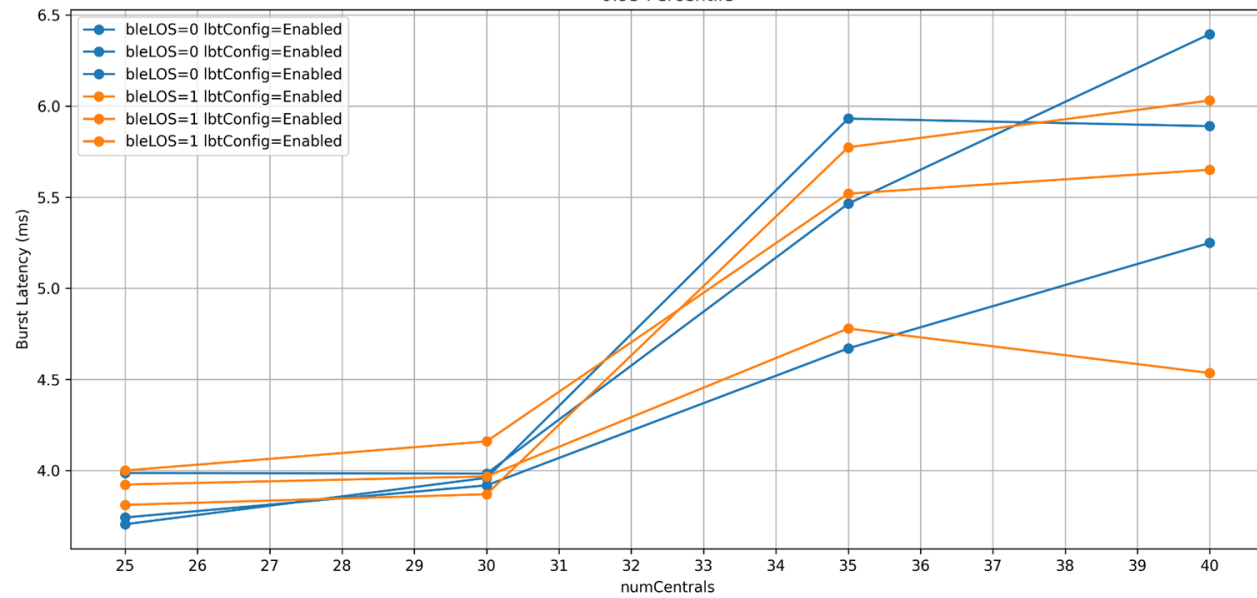


Percentile BTX UL

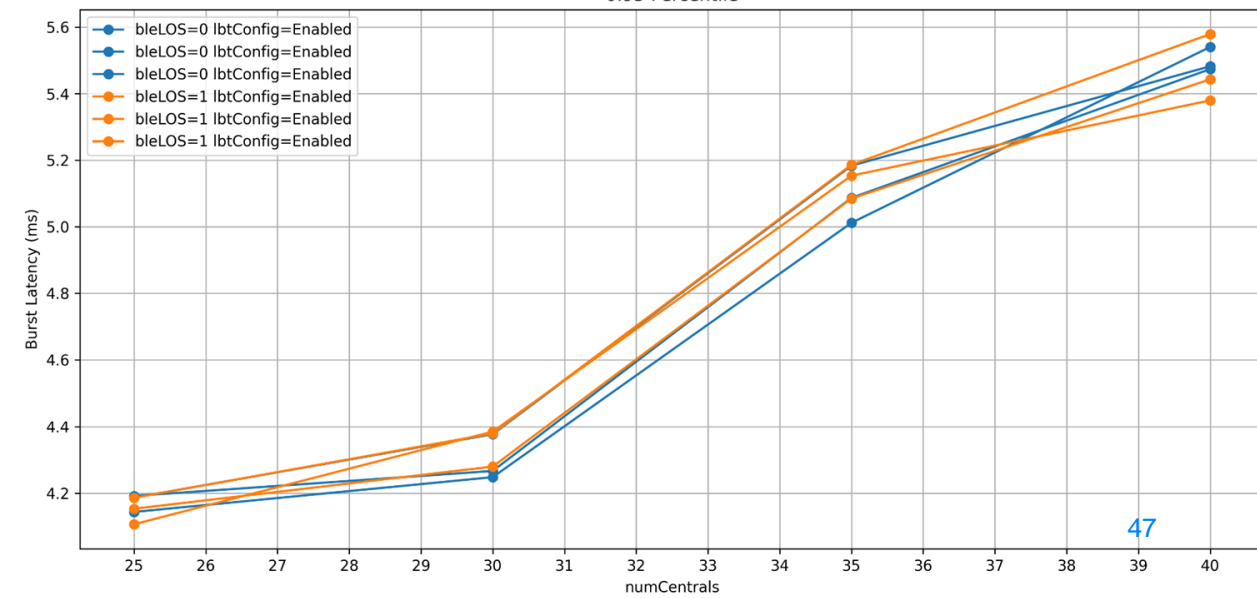
0.5 Percentile



0.95 Percentile



0.95 Percentile



Case 5: BLE/Wi-Fi 57% Overlap with 63%  
CU, CU information available to BLE

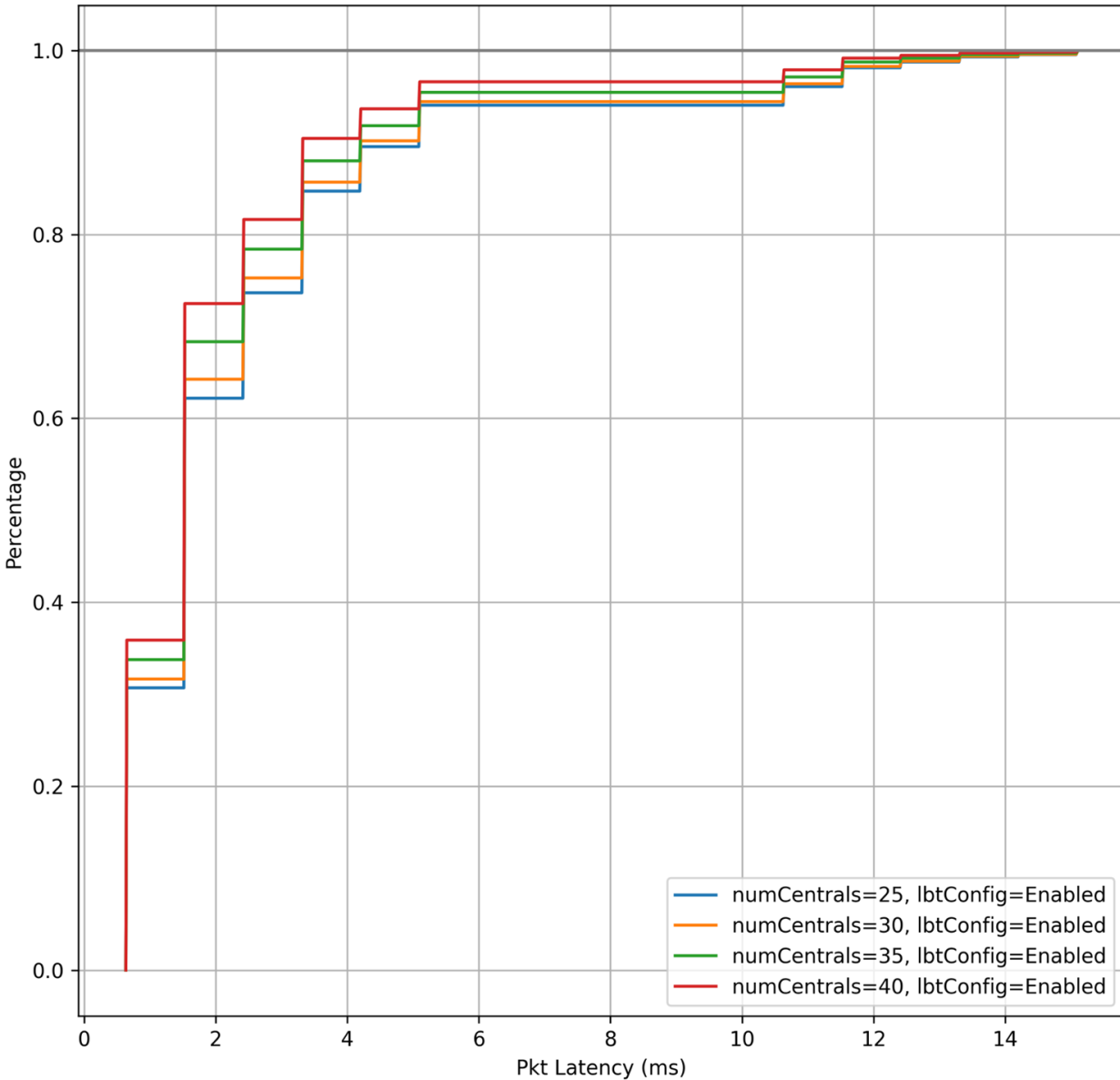


# 70 Channel BLE/Wi-Fi, 57% Overlap, 63% CU

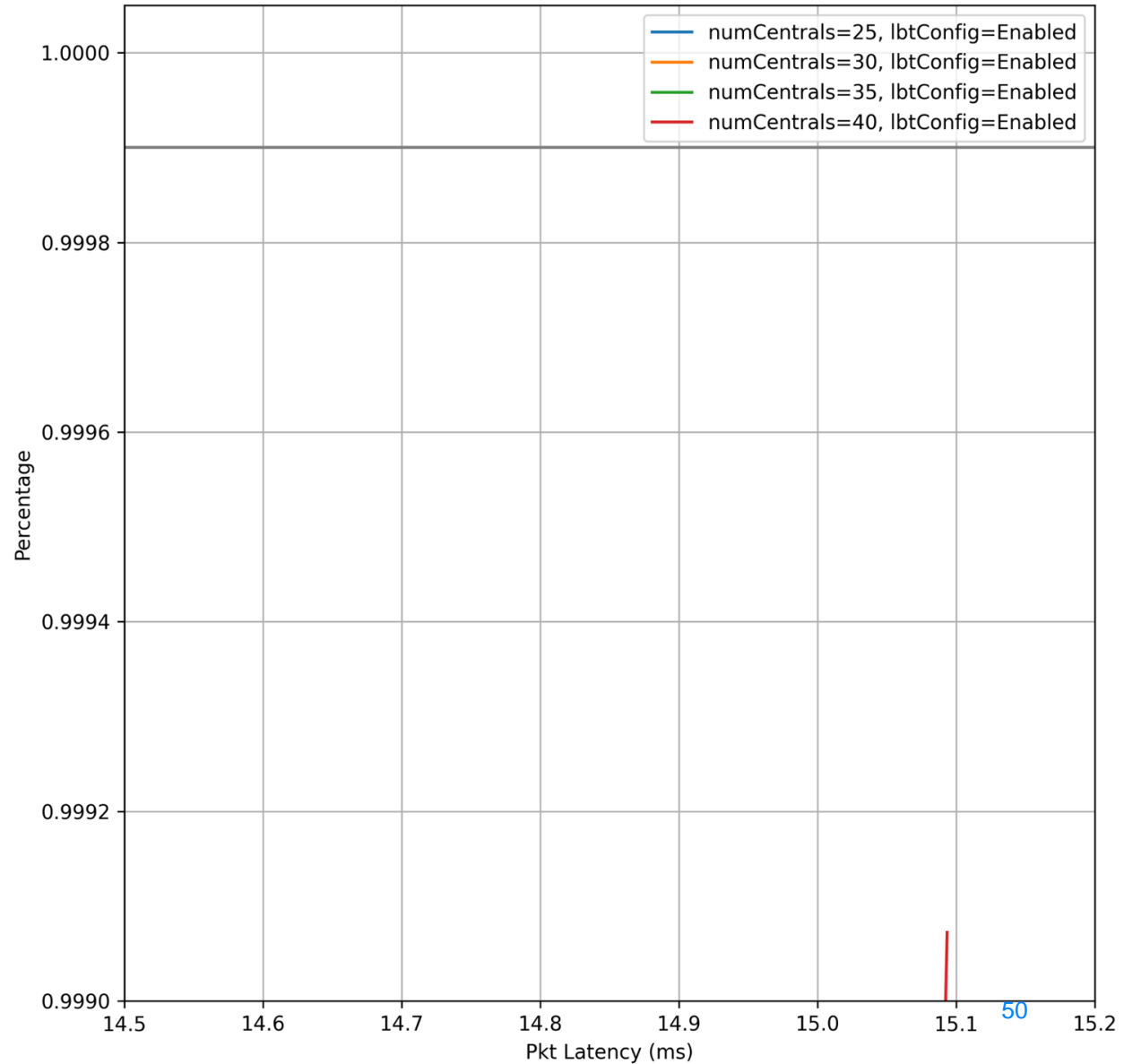
- Exact same as previous results but in these simulations, time is split evenly between all channels

# BLE/Wi-Fi 57% Overlap 63% CU Even Time Split LOS BLE

CDF bleLOS:1 TX DL

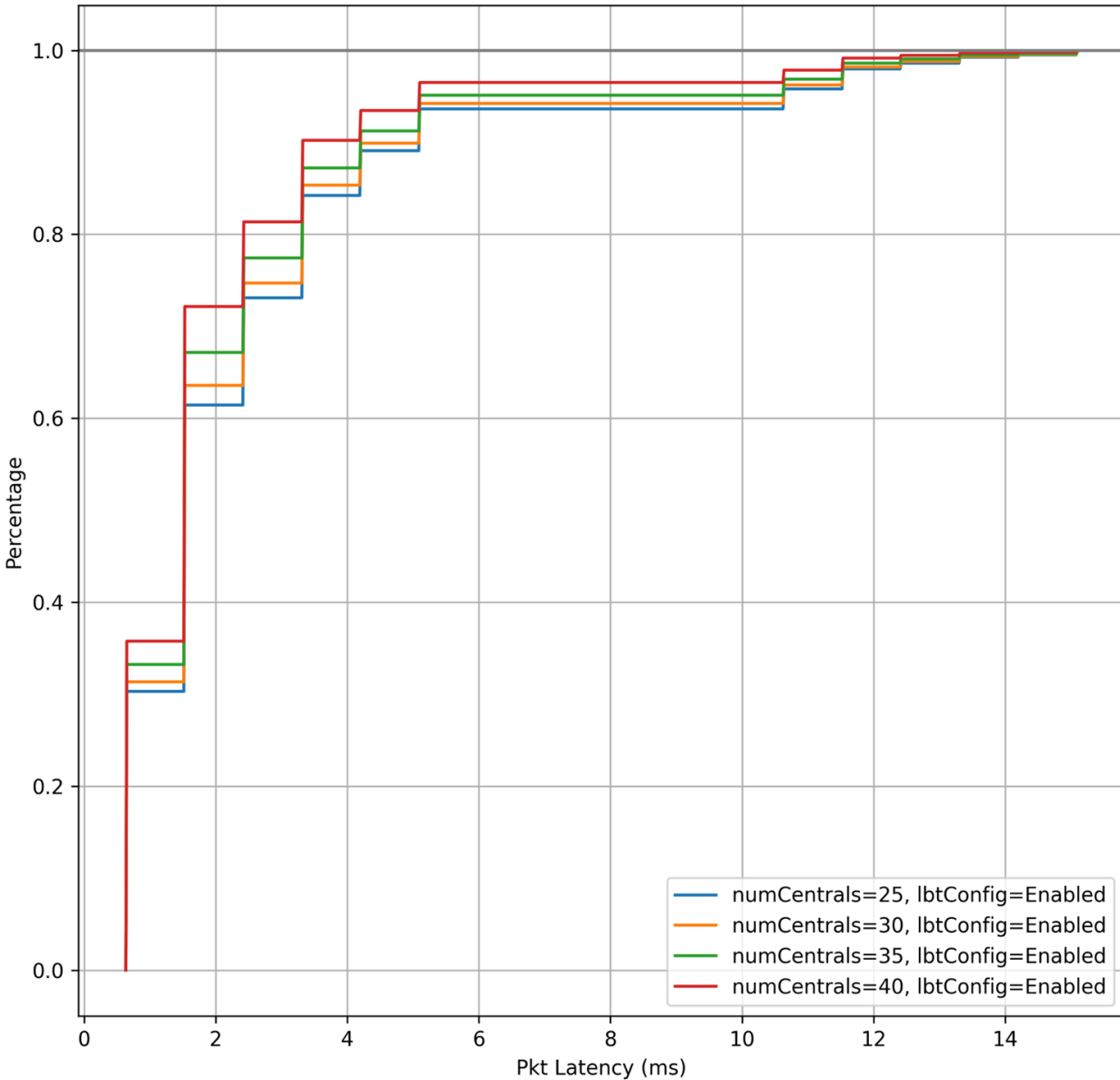


\*Zoomed-in version of graph on left CDF bleLOS:1 TX DL

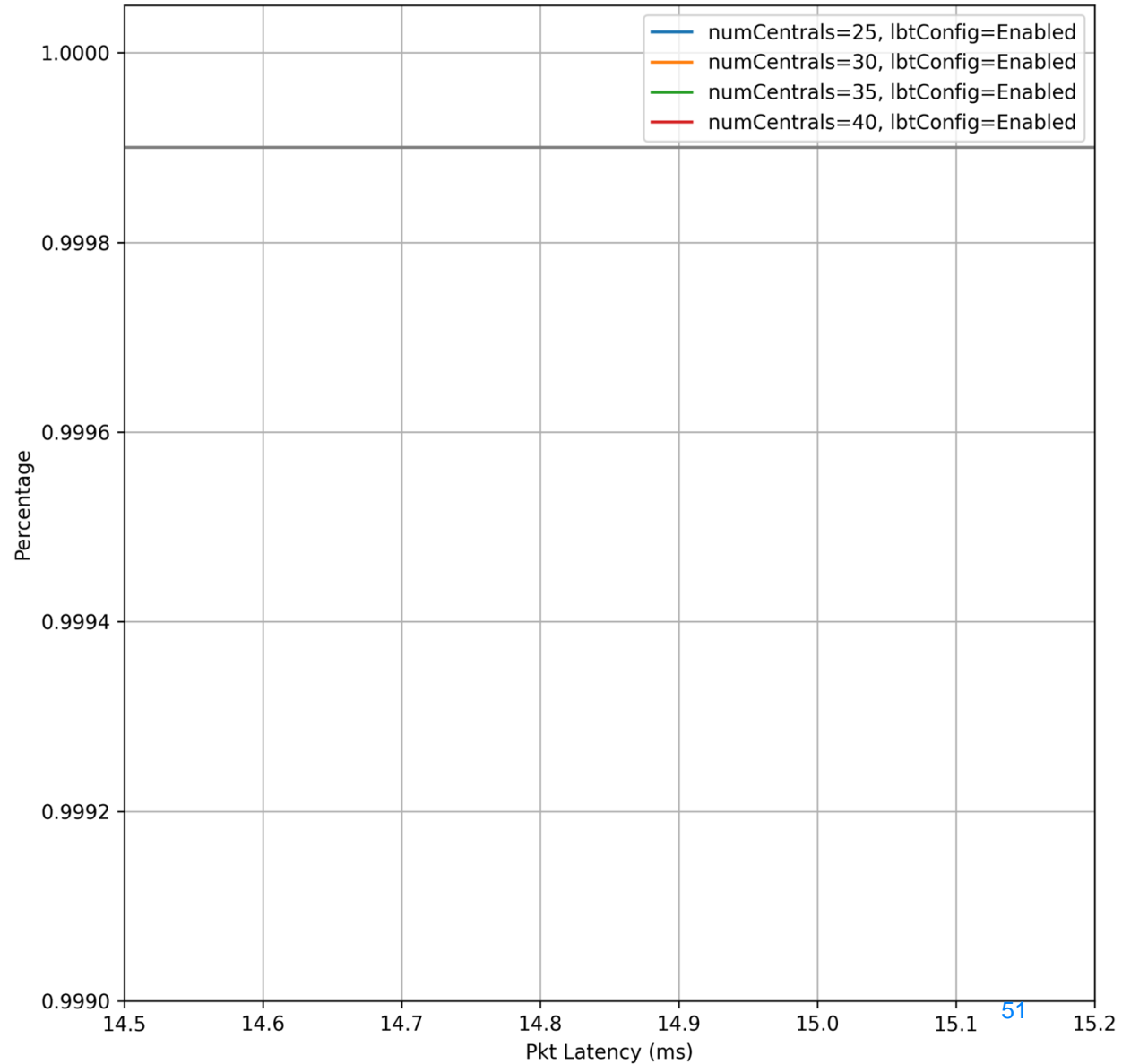


# BLE/Wi-Fi 57% Overlap 63% CU Even Time Split NLOS BLE

CDF bleLOS:0 TX DL

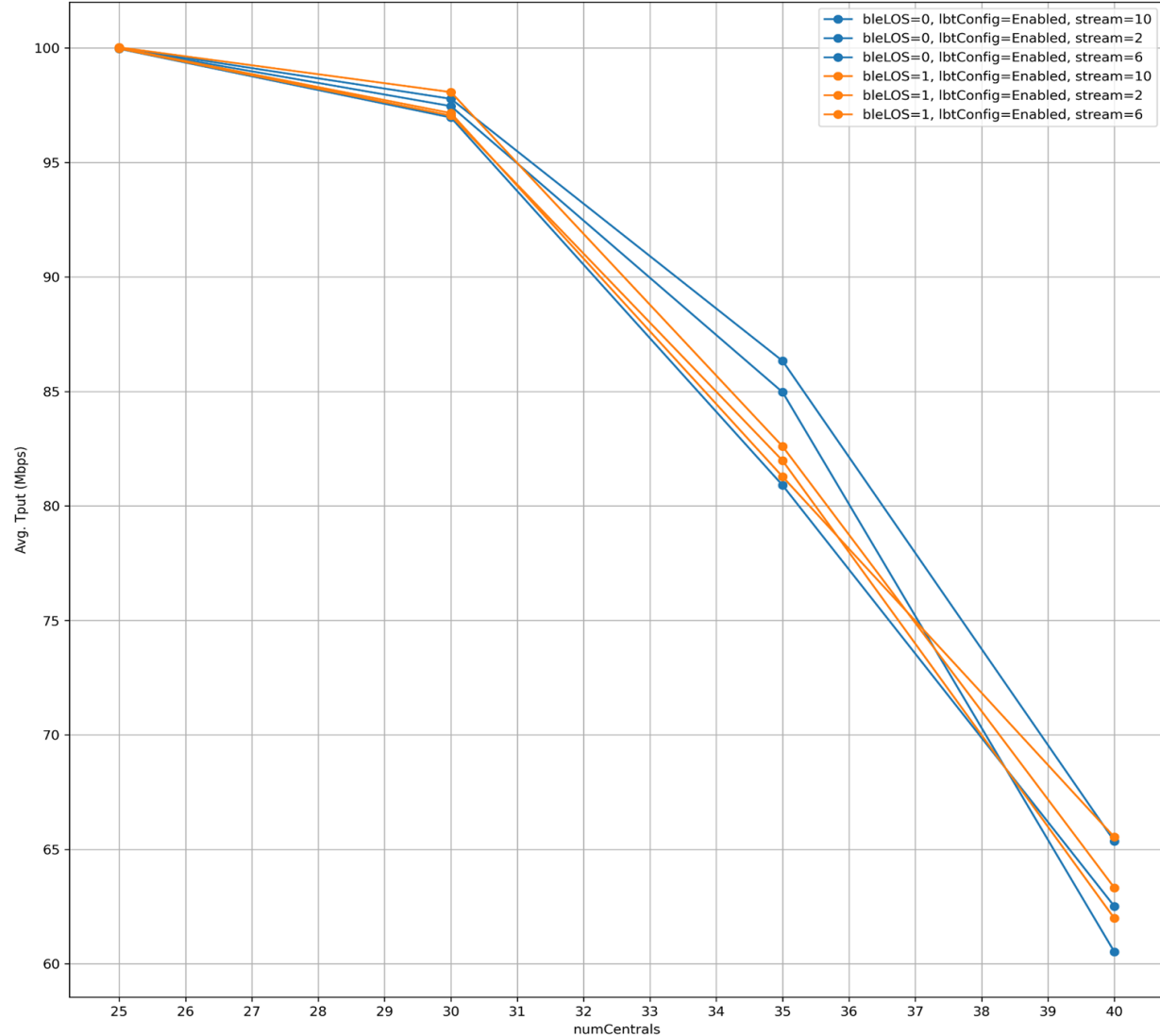


\*Zoomed-in version of graph on left CDF bleLOS:0 TX DL

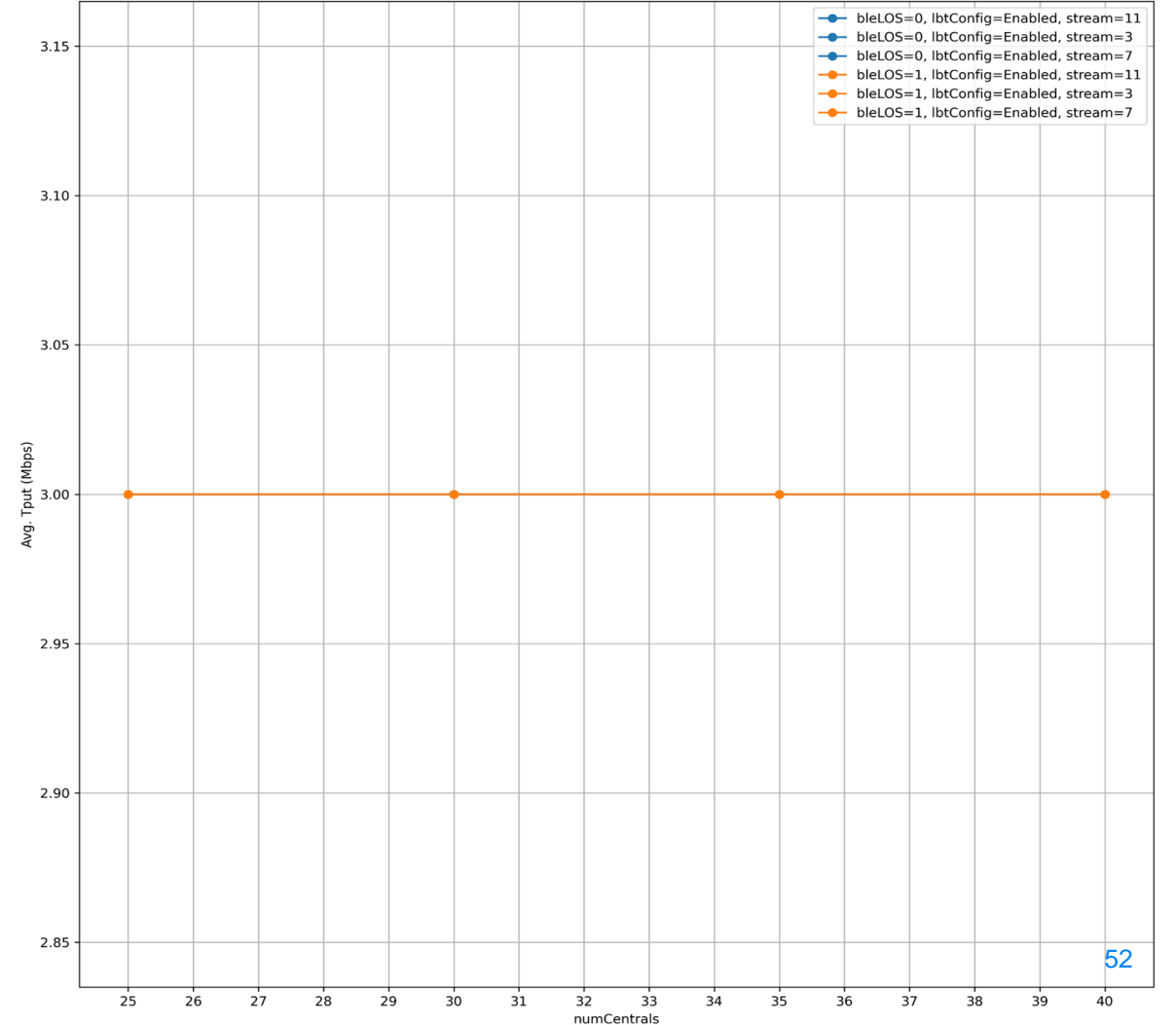


# BLE/Wi-Fi 57% Overlap 63% CU Even Time Split Wi-Fi Throughput

Average Throughput DL

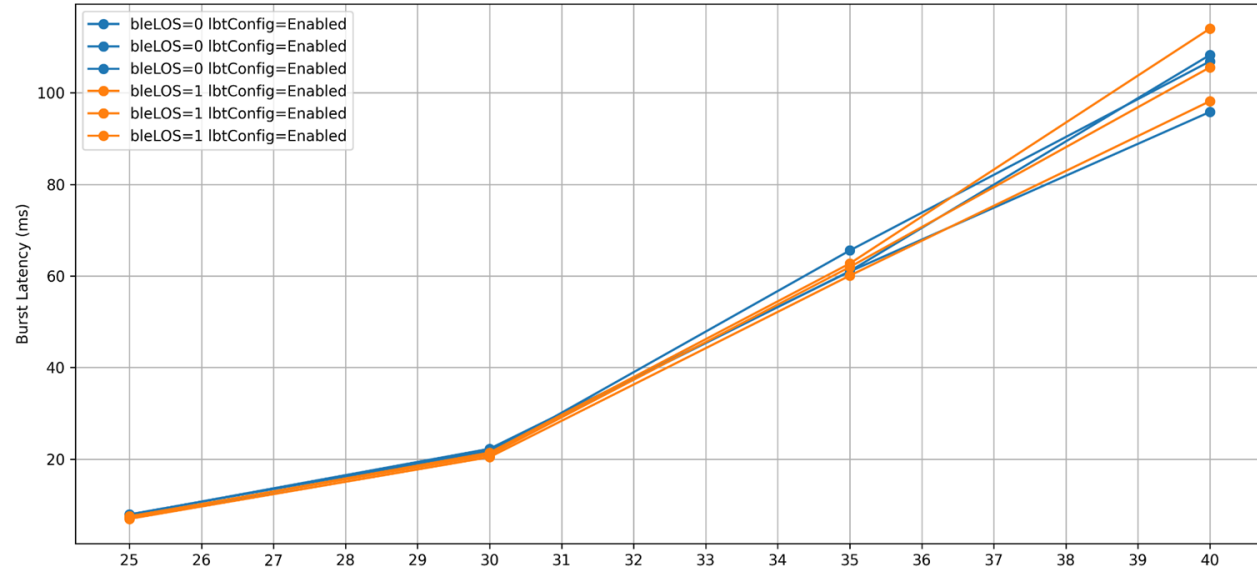


Average Throughput UL

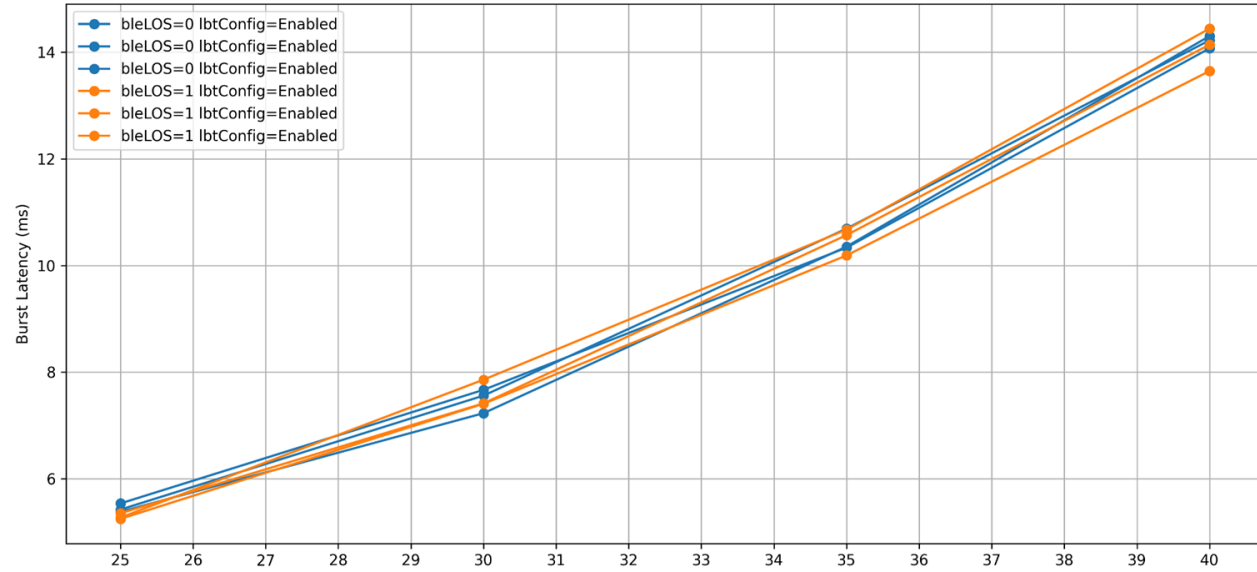


# BLE/Wi-Fi 57% Overlap 63% CU Even Time Split Wi-Fi Latency

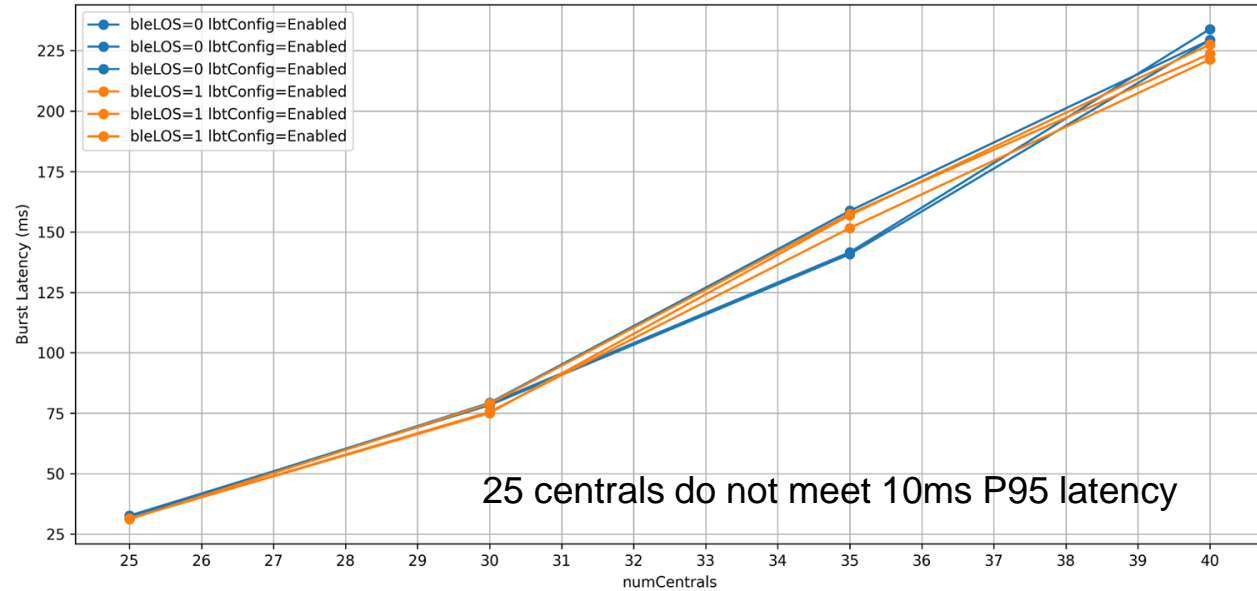
Percentile BTX DL  
0.5 Percentile



Percentile BTX UL  
0.5 Percentile



0.95 Percentile



0.95 Percentile

