

Project: IEEE P802.15 Working Group for Wireless Personal Area Networks (WPANs)

Submission Title: TERAPAN: Ultra-high Data Rate Transmission with steerable Antennas at 300 GHz

Date Submitted: 10 March, 2015

Source: Sebastian Rey, Technische Universität Braunschweig

Address: Schleinitzstr. 22, D-31806 Braunschweig, Germany

Voice: +49-531-391-2439, FAX: +49-531-391-5192, E-Mail: rey@ifn.ing.tu-bs.de

Abstract: Recent results from ongoing research activities at TU Braunschweig in the TERAPAN project are presented. In the first part an overview over the project and the key technologies is given. The second part deals with the developed demonstrator.

Purpose: To inform the Interest Group THz about recent developments.

Notice: This document has been prepared to assist the IEEE P802.15. It is offered as a basis for discussion and is not binding on the contributing individual(s) or organization(s). The material in this document is subject to change in form and content after further study. The contributor(s) reserve(s) the right to add, amend or withdraw material contained herein.

Release: The contributor acknowledges and accepts that this contribution becomes the property of IEEE and may be made publicly available by P802.15.

TERAPAN: Ultra-high Data Rate Transmission with steerable Antennas at 300 GHz

Sebastian Rey¹, Dominik Meier², Ingmar Kallfass², Thomas
Merkle³, Axel Tessmann³, Thomas Kürner¹

¹ Institut für Nachrichtentechnik, Technische Universität Braunschweig, Germany

² Institut für Robuste Leistungshalbleitersysteme, Universität Stuttgart, Germany

³ Fraunhofer-Institut für Angewandte Festkörperphysik IAF, Germany

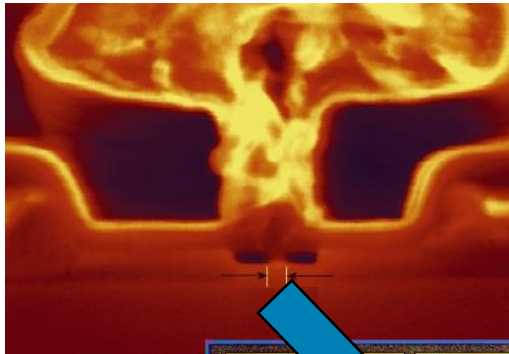
Outline

- Overview TERAPAN
- Enabling Technology
- Beamsteering
- Demonstrator Setup

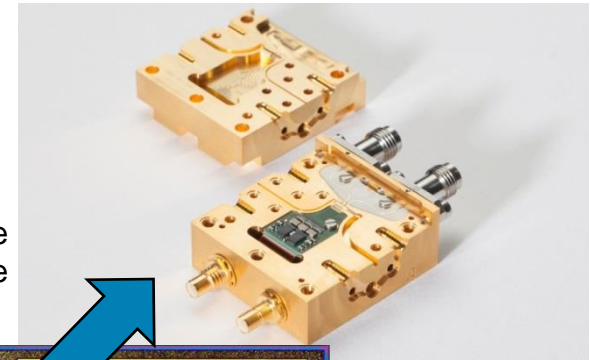
Project TERAPAN (Terahertz Communication for future Personal Area Networks)

- Project Goal: *Ultra High-Speed Wireless Communication Links Using Terahertz Frequencies*
- TERAPAN will demonstrate the feasibility of THz communication with data rates of up to *100 Gbps* over a distance of up to 10 m in indoor environments for *WLAN/WPAN types of applications* using monolithically integrated transceivers and beamsteering.
- Funded by the Federal Ministry of Education and Research (BMBF), Germany, with approx. 1.5 Mio Euro from the VIP (Validation Innovation Potential) Program.
- Collaboration project:
 - Institut für Robuste Leistungshalbleitersysteme, Universität Stuttgart
 - Fraunhofer-Institut für angewandte Festkörperphysik (Applied Solid State Physics)
 - Institut für Nachrichtentechnik, Technische Universität Braunschweig
- Runtime August 2013 to July 2016

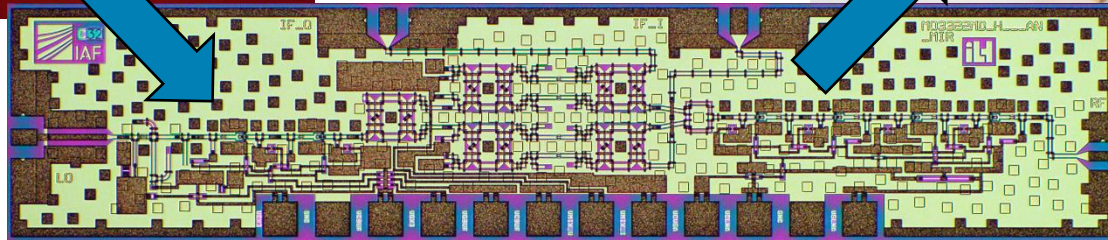
Enabling Technology



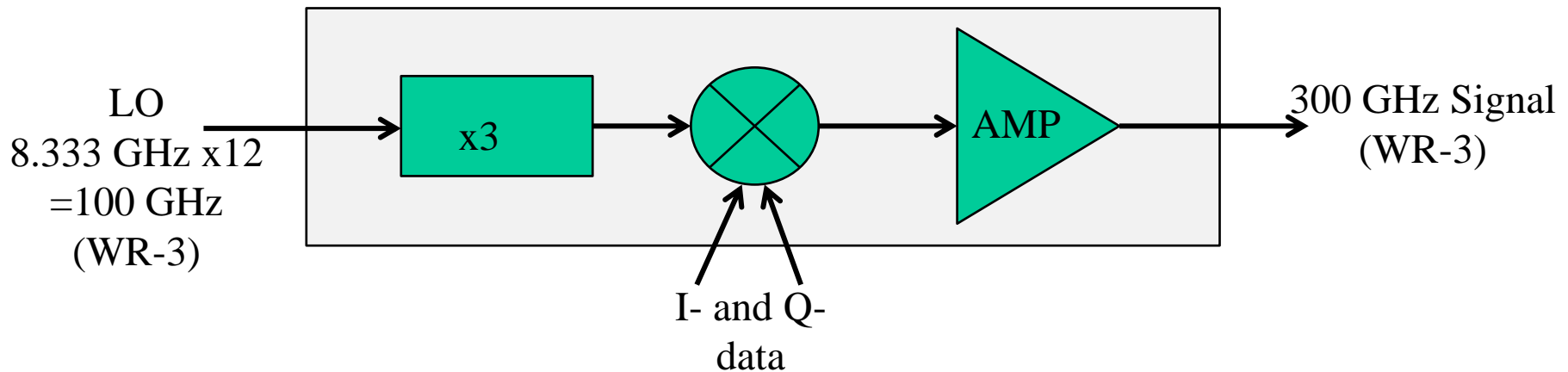
35 nm GaAs mHEMT technology with THz cutoff frequency



Compact high performance waveguide module



Fully integrated 300 GHz transmitter & receiver MMICs



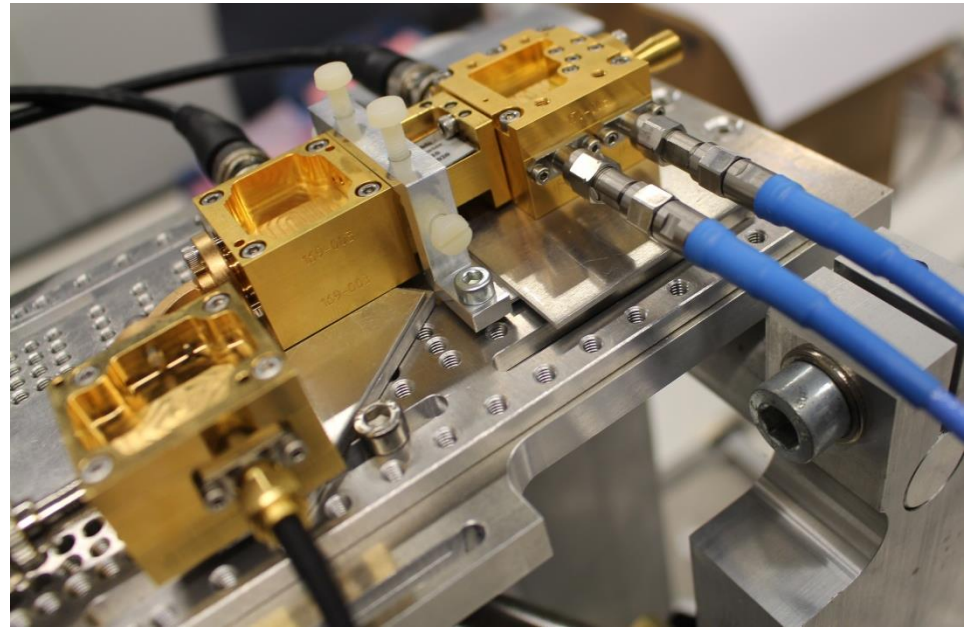
Outline

- Overview TERAPAN
- Enabling Technology
- **Beamsteering**
- Demonstrator Setup

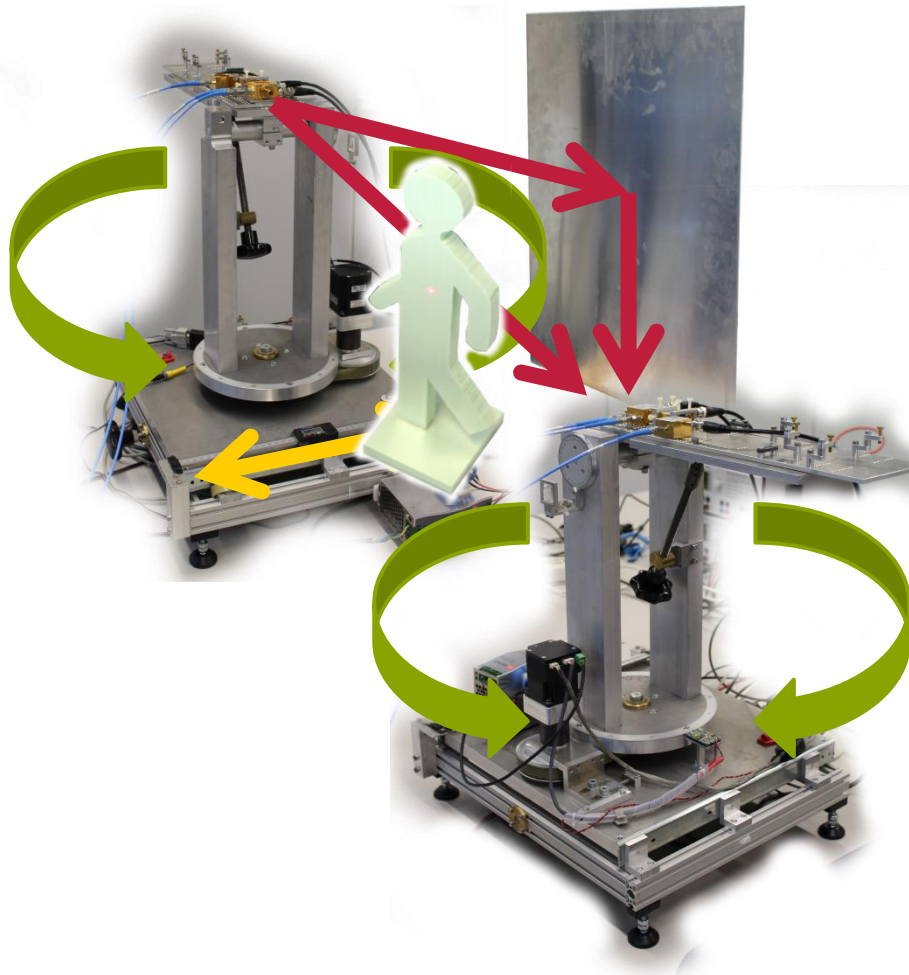
Why are high-gain antennas required at 300 GHz?

Current demonstrator:

- -10 dBm transmitted power @300GHz
- Free space loss @300GHz
 - ~82 dB @1m
 - ~102 dB @10m
- High directive antennas are required (as shown in IEEE802.15-13-0406-00-0thz)
 - Cylindrical horn antennas
 - 25 dBi gain with HPBW of 10°



Why are steerable Antennas required?



Why?

- To follow a moving Tx/Rx
- To maybe switch transmission paths

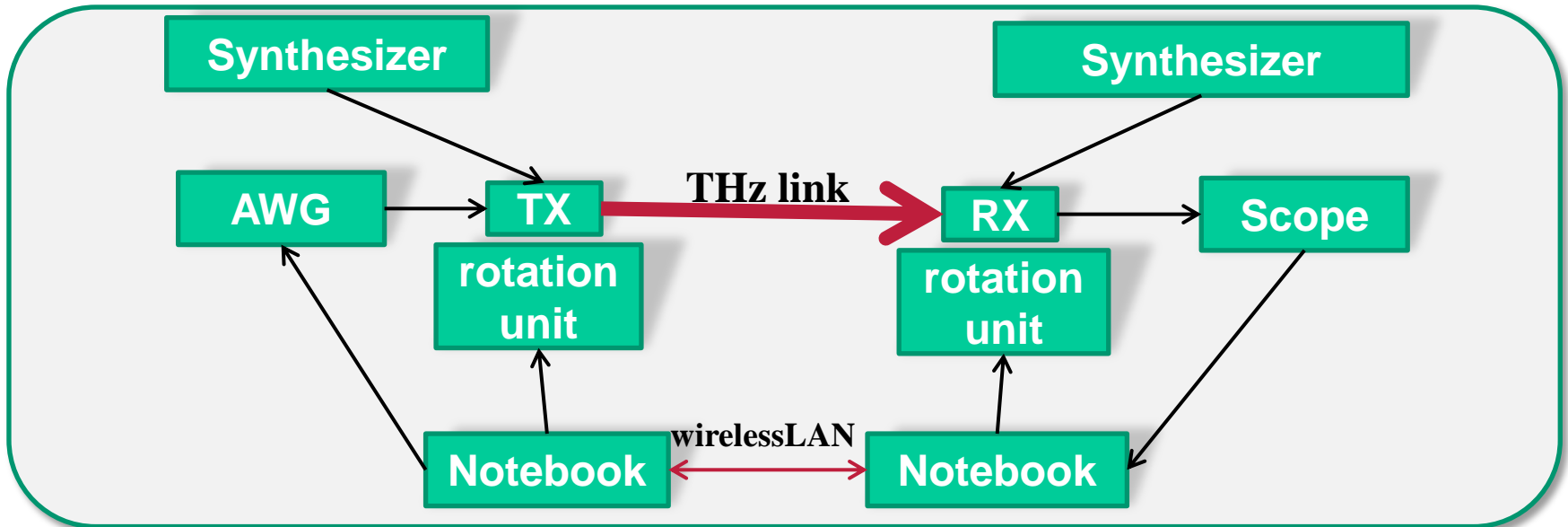
Why is electrical steering required?

- Mechanical approaches are to slow, bulky, ...

Outline

- Overview TERAPAN
- Enabling Technology
- Beamsteering
- **Demonstrator Setup**

Demonstrator Set-up

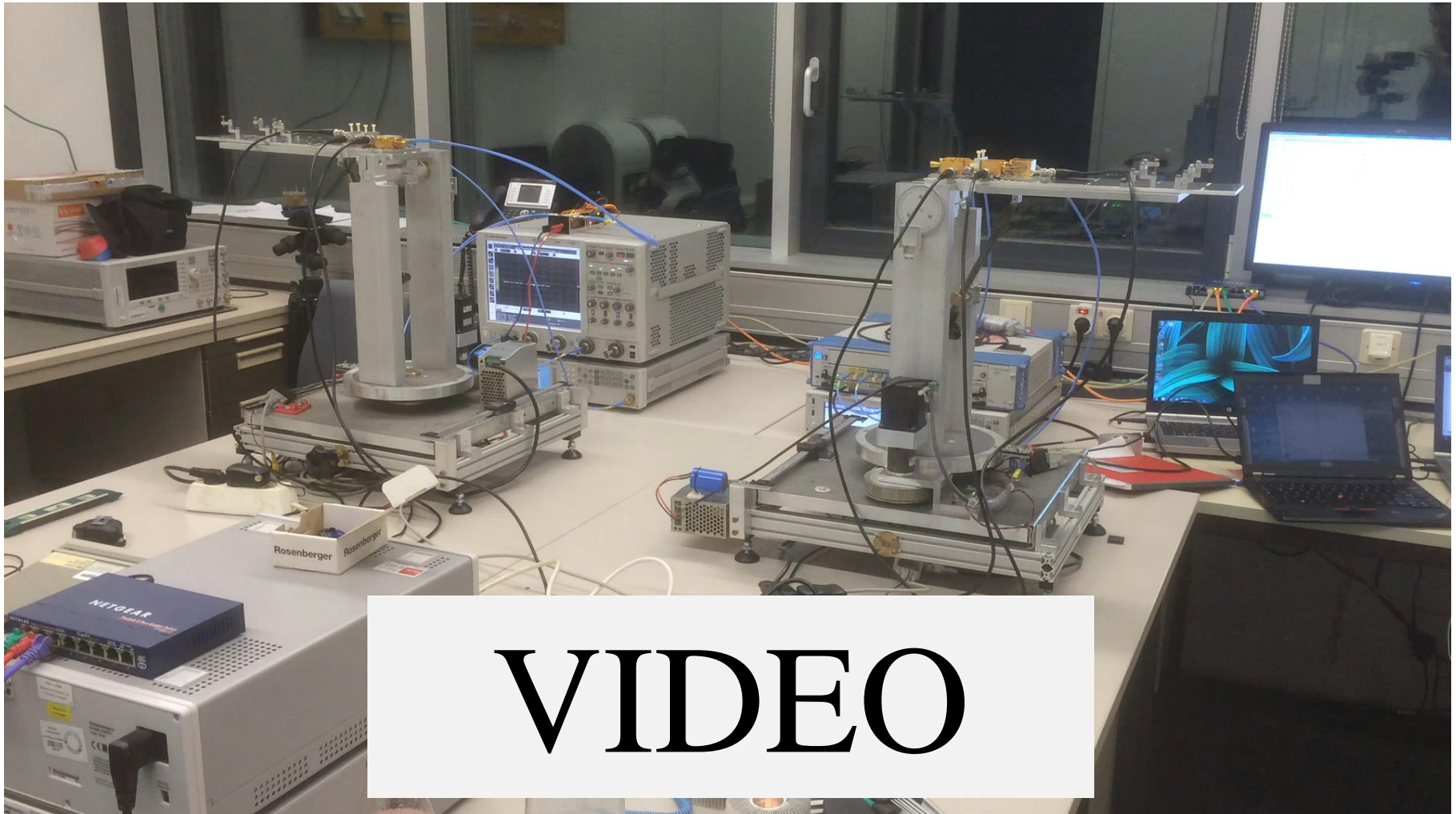


Current demonstrator

- 1st gen. of chip design
- Demonstrated data rate 10 Gbit/s
- Mechanical beam steering

Future demonstrator

- Optimised 2nd gen. of chip design
- Target data rate 100 Gbit/s
- Electronical beam steering



VIDEO

A nicer version will be available in approx. two weeks at: www.terapan.de
Live Presentation at the NGMN industry conference & exhibition 2015.

Danke für Ihre Aufmerksamkeit!
(Thank you for paying attention!)

Dipl.-Ing. Sebastian Rey
rey@ifn.ing.tu-bs.de