

**Project: IEEE P802.15 Working Group for Wireless Personal Area Networks (WPANs)**

**Submission Title:** [ETRI's response to document 11/243/r0]

**Date Submitted:** [17th March, 2011]

**Source:** [Sang-Kyu Lim, Il Soon Jang, Dae Ho Kim, You Jin Kim, Tae-Gyu Kang] Company [ETRI]

Address: [218 Gajeongno, Yuseong-Gu, Daejeon, Korea]

Voice:[+82-42-860-1573], FAX: [+82-42-860-5218], E-Mail:[sklim@etri.re.kr]

**Re:** [Response to the SB 1<sup>st</sup> recirculation for the IEEE 802.15.7 standard]

**Abstract:** [This document describes the response to document 11/243/r0.]

**Purpose:** [To resolve the comments 308 and 312 of the SB 1<sup>st</sup> recirculation ]

**Notice:** This document has been prepared to assist the IEEE P802.15. It is offered as a basis for discussion and is not binding on the contributing individual(s) or organization(s). The material in this document is subject to change in form and content after further study. The contributor(s) reserve(s) the right to add, amend or withdraw material contained herein.

**Release:** The contributor acknowledges and accepts that this contribution becomes the property of IEEE and may be made publicly available by P802.15.

# ETRI's response to document 11/243/r0

Sang-Kyu Lim  
sklim@etri.re.kr  
ETRI

# Summary of doc. 11/243/r0 related to comments 308 and 312

- Comments 308 and 312 relate to the blinking notification as well as the color function support
- Document 11/243/r0 say “Simplify color function and blinking notification support” to resolve the comments 308 and 312.
- According to the document 11/243/r0,
  1. Create the new primitives, MLME\_CF.send and MLME\_CF.confirm.
  2. Use only MLME\_CF.send and MLME\_CF.confirm primitives to simplify and unify the processes for various color function and blinking notification support.
  3. Introduce the new MAC PIB attributes, CVDR repetitions, CVDC color, CVDD duration, CVDC cycle length, to simplify and unify the processes for various color function and blinking notification support.
  4. And then, delete almost all the text of 5.1.12 (color function support) and 5.3.9 (blinking notification command).

# ETRI's Opinions on doc. 11/243/r0

- We have never seen the primitive called as “send”.
- 4.7 Concept of primitives

A primitive can be one of four generic types:

- a) Request: The request primitive is used to request a service to be initiated.
  - b) Confirm: The confirm primitive is used to convey the results of one or more associated previous service requests.
  - c) Indication: The indication primitive is used to indicate the next higher layer of an internal event.
  - d) Response: The response primitive is used to complete a procedure previously invoked by an indication primitive.
- So, we cannot understand “MLME\_CF.send” primitive.

## ETRI's Opinions on doc. 11/243/r0 (*cont.*)

- ETRI had already suggested the separate primitives (MLME\_Color.request and MLME\_Color.confirm) on Beijing Meeting on May last year to support the color function, the related mechanism, and the related text.
- See the document 10/348/r0.
- We had an experience which the document 10/348/r0 had continued to be discussed during June last year.
- See the conference call minutes (doc. 10/388/r6)
- We finally agreed to the conclusion that the color functions are supported only by the primitives (MLME-associate, MLME-scan, MLME-disassociate and so on), which already exist, not the separate primitives, on San Jose meeting on August last year.

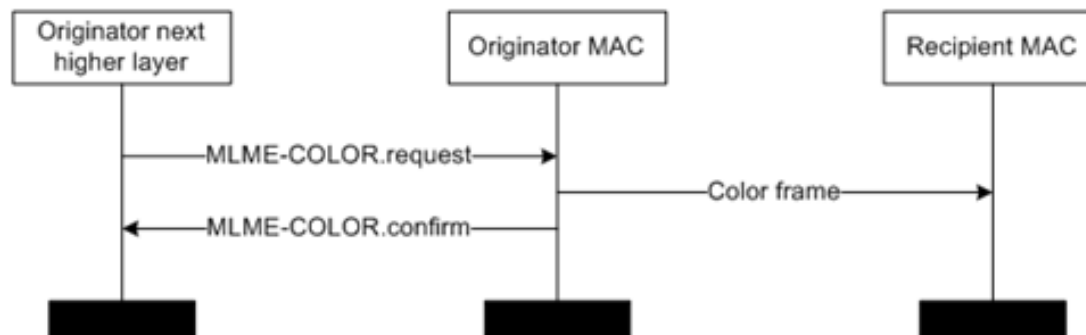
# Slide 8 in doc 10/348/r0

May 2010

doc.: IEEE 802.15-10-0348-00-0007

## New Clause 7.1.17 (CID 635)

- 7.1.17 Primitives for requesting color frame settings from DME
  - MLME-SAP color primitives defines how to request color packet function from a DME.



# ETRI's Opinions

## on comments 308 and 312 (*cont.*)

- So, his recommendation make us deny our achievements and big progress up to now and go back to D1 draft on May last year.
- TG 7 has shared the philosophy up to now which the color function is supported by only by the primitives (MLME-associate, MLME-scan, MLME-disassociate and so on), which already exist, not the separate primitives.
- If the CVD frame is sent by the cycle length, duration, and repetition times to be assigned to it, the situation which data should be sent but it cannot be sent may happen.

### Resolution

- Disagree

# ETRI's Conclusion on the other comments fully related to 5.1.12 (Color function support)

- If we do not accept the comments 308 and 312, we have 11 comments fully related 5.1.12 (color function support).
- The resolutions on these 11 comments were already presented the day before yesterday in document 11/241/r0
- 11 comments fully related to 5.1.12 are  
5, 80, 81, 82, 83, 84, 85, 313, 314, 316, and 317.

## Resolution

- See the document 11/241/r0