

Project: IEEE P802.15 Working Group for Wireless Personal Area Networks (WPANs)

Submission Title: MAC Proposal to IEEE 802.15.7

Date Submitted: September 24, 2009

Source: Kyeong Tae Kim and Myunghee Son, ETRI

E-Mail: ktkim@etri.re.kr and mhson@etri.re.kr

Re: Some technical system design details for 15.7 VLC.

Abstract: Some technical details for MAC are being proposed.

Purpose: To trigger discussion and initiate merger with other group members of TG 7.

Notice: This document has been prepared to assist the IEEE P802.15. It is offered as a basis for discussion and is not binding on the contributing individual(s) or organization(s). The material in this document is subject to change in form and content after further study. The contributor(s) reserve(s) the right to add, amend or withdraw material contained herein.

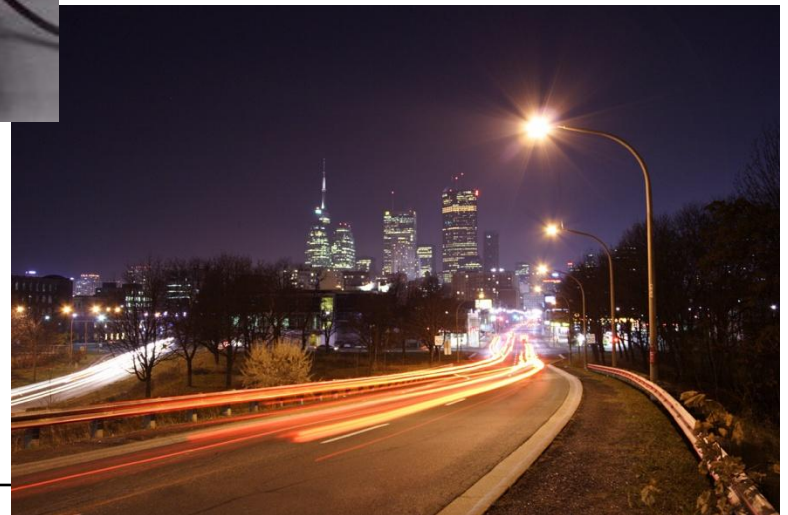
Release: The contributor acknowledges and accepts that this contribution becomes the property of IEEE and may be made publicly available by P802.15.

MAC Proposal to IEEE 802.15.7

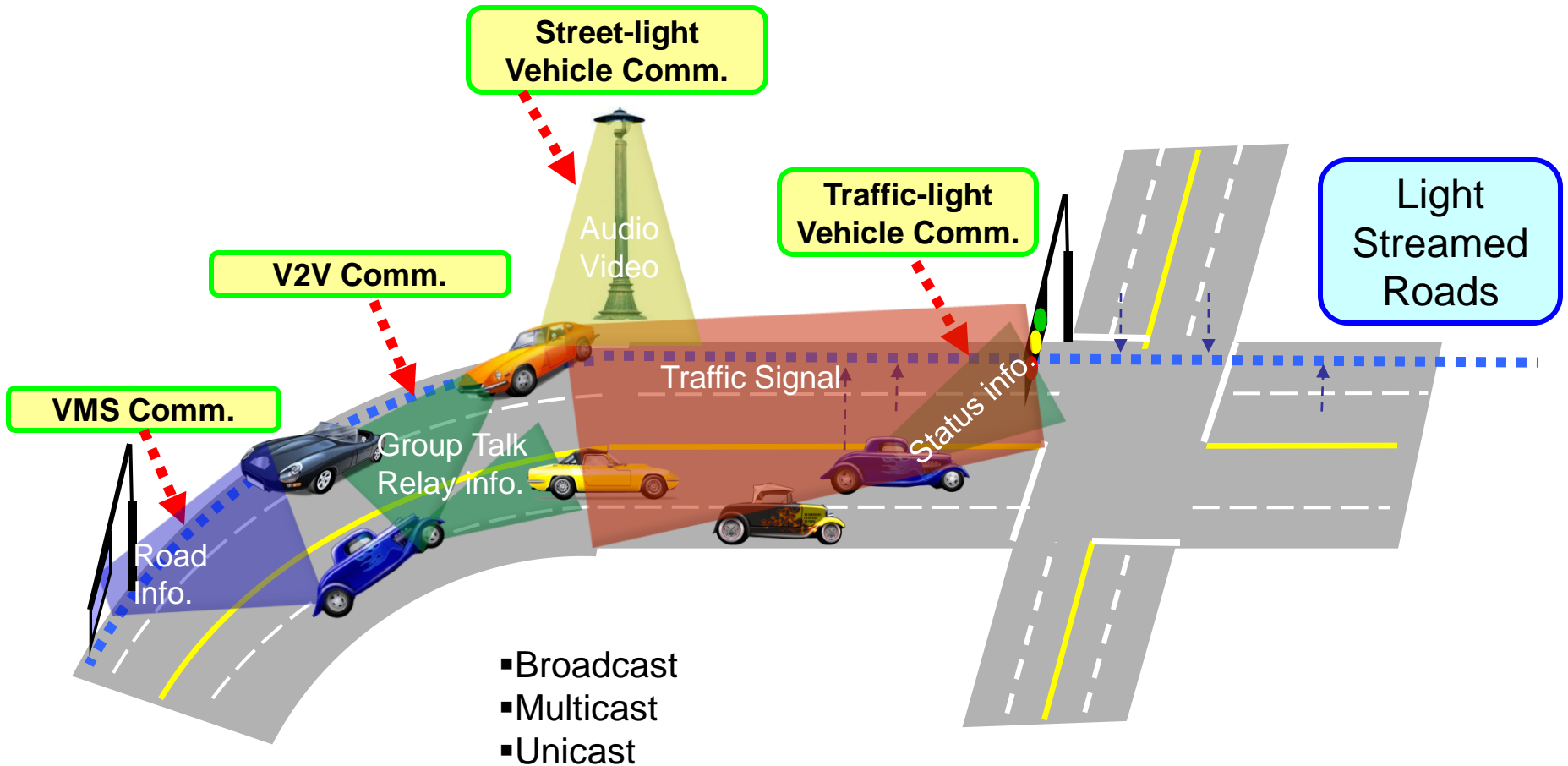
September 2009

Kyeong Tae Kim and Myunghee Son, ETRI

Automotive LED



Light Streamed Roads (Light make Roads)



Automotive Application Using VLC

- Between traffic-light(or infra) and vehicle
 - Traffic signal information broadcast
 - Proactive Idle-stop
 - Eco-driving
 - Vehicle reports road environment
 - Collecting and providing road information
 - Traffic status
 - Emergency situation
 - Road surface information
- Between vehicle and vehicle
 - Relaying traffic signal and road information
 - Guiding the direction
 - Maneuvering information

Broadcast/Multicast/Unicast

- Broadcast/Multicast
 - From traffic-light to vehicle (downlink)
 - From vehicle to vehicle
- Multicast Service
 - Accident announcement lane by lane
 - Group driving
 - Common interest sharing
- Unicast
 - From vehicle to traffic-light (uplink)
 - From vehicle to vehicle
- No Acknowledgements for Broadcast or Multicast frames

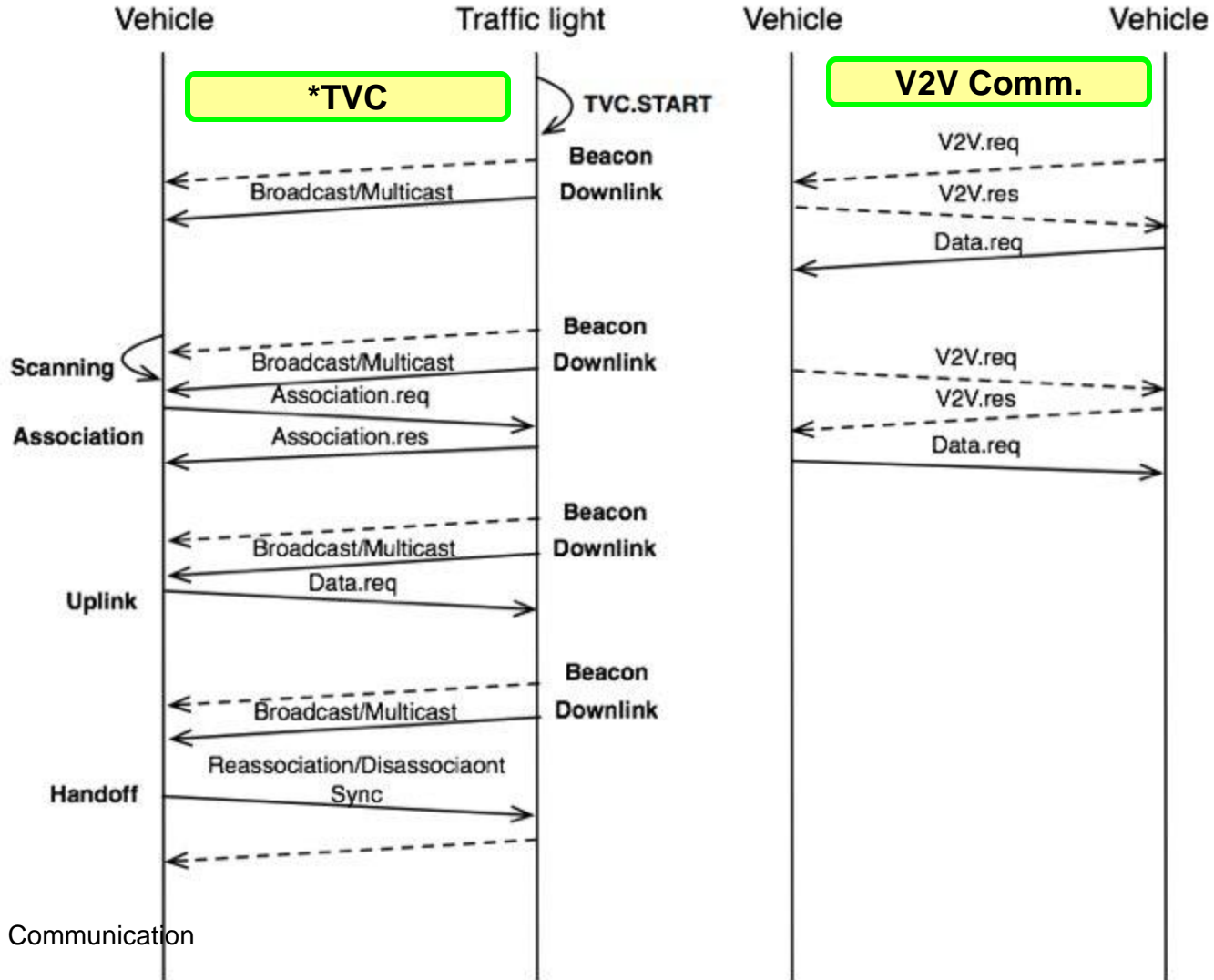
MAC Consideration

- Device
 - LEDs(Tx) & PDs(Rx) around cars
- Requirement
 - Support for the Light Streamed Road
 - Infra to Vehicle or Vehicle to Infra
 - Vehicle to Vehicle
 - Automotive adaptation
 - Upload request by many cars which approach to intersections
 - Relay data from vehicle to vehicle
 - High mobility

MAC Function

- Scanning
 - Search for a network (infra such as traffic-light, VMS, and street light or vehicle)
- Synchronization
 - Recognizing Beacon
 - Time Synchronization
 - Adopt PHY parameter
- Association/Reassociation
 - Integration into a network
 - **Multicast join**
 - Traffic-accident propagation
 - Road traffic information sharing
 - Road surface information announcement
 - Join/Leave, i.e. change networks
- Scheduling
 - Control data timing (ex. TDM)

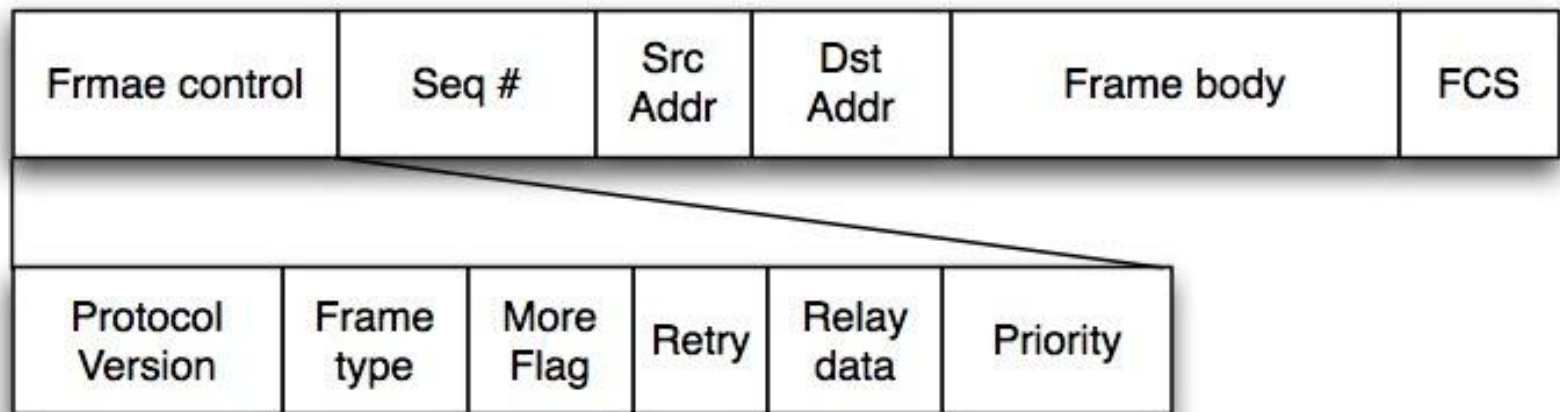
Communication Procedure



*TVC :
Traffic light Vehicle Communication

Framing Details : Format

- Generic 802.15.7 MAC



- Addressing

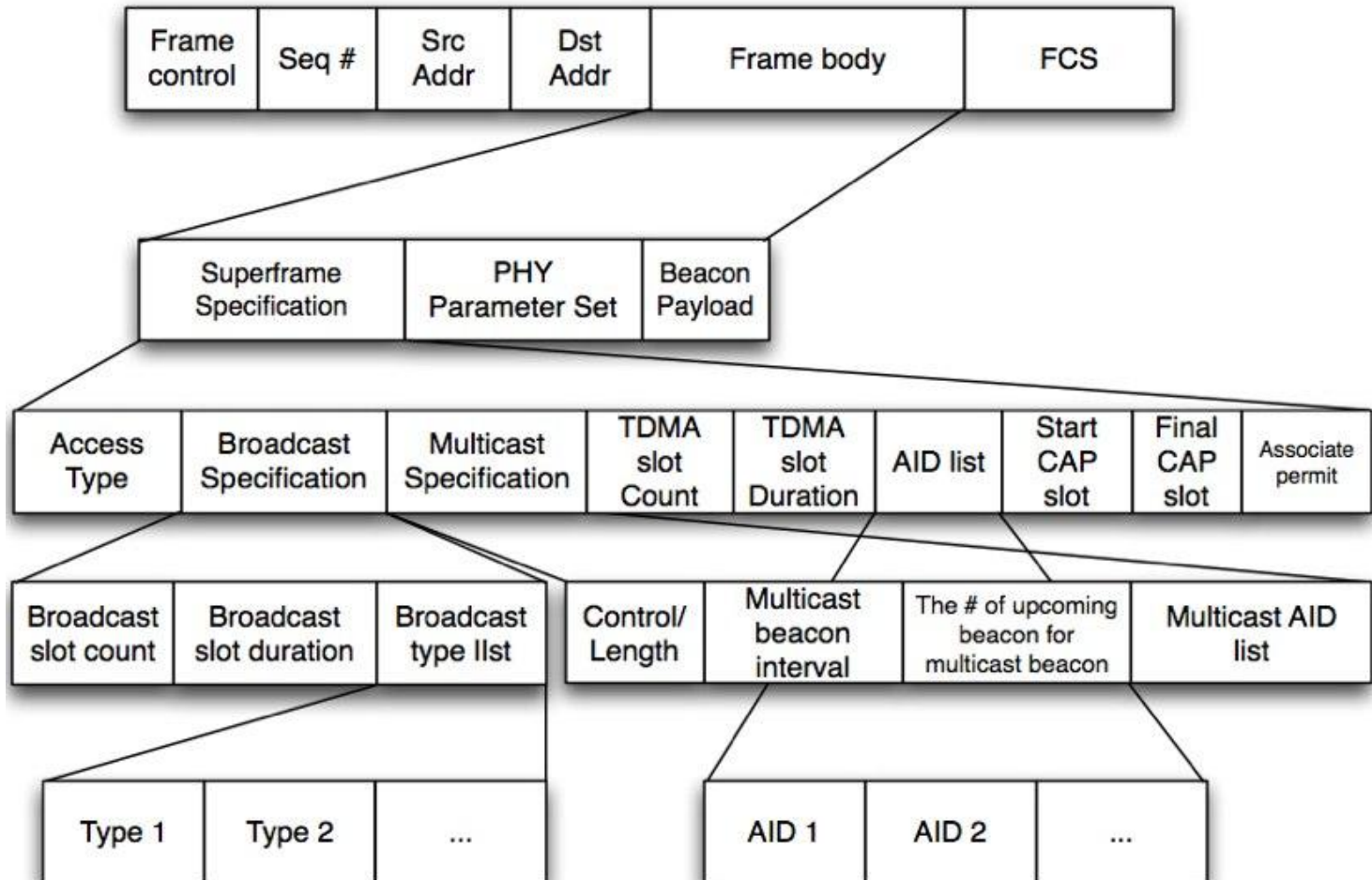
- Broadcast : 11111111 11111111
- Multicast : 10XXXXXX XXXXXXXX
- Unicast : 00XXXXXX XXXXXXXX

Framing Details : Frame Types

- Frame Types
 - Beacon
 - Data
 - TVC
 - From Traffic-light to Vehicle
 - **From Vehicle to Traffic-light**
 - V2V
 - **From Vehicle to Vehicle (like ad-hoc)**
 - ACK
 - Command
 - Scanning
 - **Association(TVC) / V2V(V2V)**
 - Reassociation/Disassociation
 - Sync

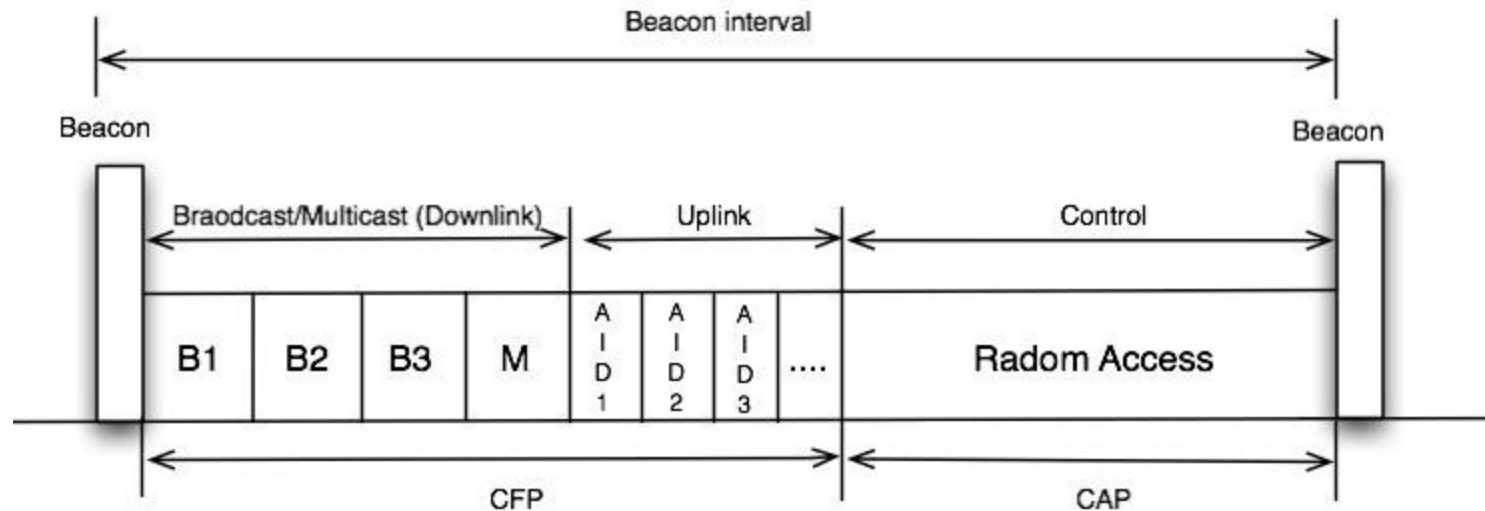
Beacon (1/3)

- Beacon Frame



Beacon (2/3)

- Superframe



- B1 : Broadcast slot 1
- B2 : Broadcast slot 2
- B3 : Reserved
- M : Multicast slot
- AID1 : Association ID 1
- AID2 : Association ID 2

Beacon (3/3)

- Message type : Beacon
- Message subtype : Beacon notify
- Information
 - Beacon Sequence Number (BSN)
 - Traffic-light descriptor
 - Traffic-light ID
 - Logical channel
 - Channel page
 - Timestamp
- Direction message
 - From Vehicle MAC to Vehicle upper layer

Data payload (1/2)

- Infra(Traffic light, VMS, Street light) to vehicle
 - Downlink
 - Broadcast/Multicast data

TYPE 1 (Traffic Signal Information) Downlink

Current Signal	Next Signal	Next Signal Remaining Time	Green Signal Remaining Time	Right Arrow Waiting/Passing	RightArrow Remaining Time
----------------	-------------	----------------------------	-----------------------------	-----------------------------	---------------------------

TYPE 2 (Road Status Information) Downlink

The total # of passing cars	The AVG # of passing cars/min	Emergency Description	Road Surface Status
-----------------------------	-------------------------------	-----------------------	---------------------

- Uplink
 - Unicast data

Road Status Information UPlink

Stop & Go Count	Avg Speed	Emergency Description	Road Surface Status
-----------------	-----------	-----------------------	---------------------

Data payload (2/2)

- V2V

- Broadcast/Multicast/Unicast

TYPE 1 (Traffic Signal Information) - Relay data

Current Signal	Next Signal	Next Signal Remaining Time	Green Signal Remaining Time	Right Arrow Waiting/Passing	RightArrow Remaining Time
----------------	-------------	----------------------------	-----------------------------	-----------------------------	---------------------------

TYPE 2 (Road Status Information) - Relay data

The total # of passing cars	The AVG # of passing cars/min	Emergency Description	Road Surface Status
-----------------------------	-------------------------------	-----------------------	---------------------

Type 3 (Road Status Information)

Stop & Go Count	Avg Speed	Emergency Description	Road Surface Status
-----------------	-----------	-----------------------	---------------------

Type 4 (Group Driving)

Common Interest	Guiding Information
-----------------	---------------------

Type 5 (Multimedia Information)

Audio	Video	Advisetisement
-------	-------	----------------

Scanning

- Message type : Command
- Message subtype : Scanning
- Information
 - Logical channel
 - Among Red, Yellow, Green Left, and Green
 - Channel page
 - Scan duration
- Direction message : From Vehicle to Traffic-light

Association (1)

- Message type : Command
- Message subtype : Association request
- Information
 - Logical channel
 - Among Red, Yellow, Green Arrow, and Green
 - Channel page
 - Listen interval
 - **Capability info**
 - Device type
 - Position (window shield, head light, tail light)
 - Property
 - Supported rate
 - **Direction**
 - **Access type**
 - TDM, Random Access
- Direction message : From Vehicle to Traffic-light

Association (2)

- Message type : Command
- Message subtype : Association Response
- Information
 - **Association ID**
 - Contact # : Sequential increase
 - Lane # : Green Left – 00, Green – 01, Right - 10
 - Step # : The volume number of cars which can pass the intersection
 - Traffic-light ID
 - **Mobility type**
 - Red – ISG (static), Approaching (low mobility)
 - Yellow – Adaptation (high mobility)
 - Green – Pass (High mobility)
 - Left or Right Arrow – Look around (mid mobility)
 - **Access type**
 - Status
- Direction message : From Traffic-light to Vehicle

Reassociation (1)

- Message type : Command
- Message subtype : Reassociation Request
- Information
 - **Current traffic-light ID**
 - Logical channel
 - Channel page
 - Listen interval
 - Capability info
 - Device type
 - Position (window shield, head light, tail light)
 - Property
 - Supported rate
 - Direction
 - Access type
 - TDM, Random Access
- Direction message
 - From Vehicle to Traffic-light

Reassociation (2)

- Message type : Command
- Message subtype : Reassociation Response
- Information
 - **Association ID**
 - Contact #
 - Lane #
 - Step #
 - Traffic-light ID
 - **Mobility type**
 - Red – PIS (static), Approaching (low mobility)
 - Yellow – Adaptation (high mobility)
 - Green – Pass (high mobility)
 - Left or Right Arrow – Look around (mid mobility)
 - Access type
 - Status
- Direction message
 - From Traffic-light to Vehicle

Disssociation

- Message type : Command
- Message subtype : Disassociation
- Information
 - Disassociation reason
 - **Current Traffic-light ID**
 - **Association ID**
- Direction message
 - From Traffic-light to Vehicle
 - From Vehicle to Traffic-light

Start

- Message type : Command
- Message subtype : Start
- Information
 - **Traffic-light descriptor**
 - Traffic-light ID
 - Logical channel
 - Channel page
 - Timestamap
 - Beacon
 - Superframe Specification
- Direction message
 - From Traffic-light to Vehicle

Sync (1/2)

- Message type : Command
- Message subtype : Sync request
- Information
 - **Traffic-light descriptor**
 - Traffic-light ID
 - Logical channel
 - Channel page
 - Timestamap
- Direction message
 - From Vehicle to Traffic-light

Sync (2/2)

- Message type : Command
- Message subtype : Sync loss indication
- Information
 - Loss reason
 - Traffic-light descriptor
 - Traffic-light ID
 - Logical channel
 - Channel page
 - Timestamap
- Direction message
 - From Vehicle MAC to Vehicle upper layer

V2V (1/2)

- Message type : Command
- Message subtype : V2V request
- Information
 - **Capacity info**
 - Device type
 - Supported rate
 - **Characteristic**
 - Duplex
 - Tx only / Rx only / Both
 - Type
 - Allocation / Deallocation
 - Access type
- Direction message
 - From Vehicle to Vehicle

V2V (2/2)

- Message type : Command
- Message subtype : V2V response
- Information
 - **V2V ID**
 - **Capacity info**
 - Device type
 - Supported rate
 - **Characteristic**
 - Duplex
 - Tx only / Rx only / Both
 - Type
 - Allocation / Deallocation
 - Access type
 - **Mobility type**
 - **Status**
- Direction message
 - From Vehicle to Vehicle

Conclusion

- Propose automotive MAC for VLC
 - Support for the Light Streamed Road
 - Infra to Vehicle or Vehicle to Infra
 - Vehicle to Vehicle
 - Hybrid media access scheme
 - TDM, Random Access
 - New frame format for the automotive adaptation