

# Wavelengths



## Volume 62 – Issue 02

### Contents

Upcoming Events	1
Chair's Column	2
Technical Activities Report	3
CFP:ECCE 2022	4
2022 Future City	5
CFP:EIT 2022	6
Officer Training 2022	7
CFP:PHM 2022	8
CFP:SusTech2022 Students Poster Competition	9
Member News	10
National Engineers Week	11
From NSPE: National Engineers Week	12
Need Science Fair Judges!	14
ORG UNITS cheat sheet	15
Profile: Section Vice Chair	17
RoboFest Update	18
Activities & Events	20
Executive Committee	21
ExCom Meeting Schedule	22
Editorial Corner	23
Web & Social Sites	25
Advertising Rates	26
Leadership Meetings	26

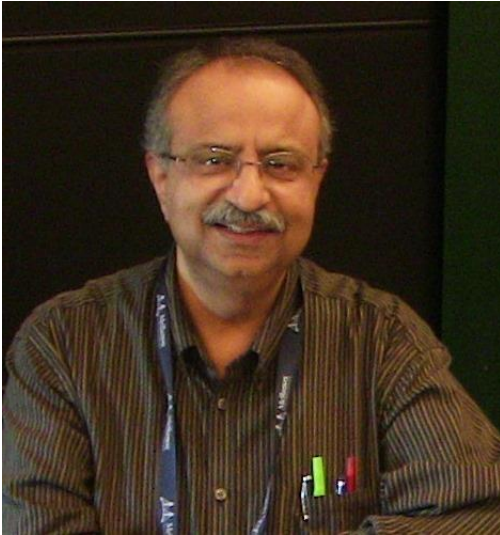
### Upcoming Events

We have several events coming up this month. Listed below are some of the events, FYI.

Event	Date	Time
<a href="#">Recent Advances in Data Center, Edge Computing Technologies</a>	01 Feb 2022	06:00 PM
<a href="#">Basics of Grounding Modeling and Design - Lunch &amp; Learn</a>	09 Feb 2022	12:00 PM
<a href="#">Ch8: AdCom Teleconference</a>	10 Feb 2022	11:00 AM
<a href="#">SEM Section ExCom Monthly Meeting (TELECONFERENCE) for February 2022</a>	10 Feb 2022	06:30 PM
<a href="#">Fundamental Tests with Antihydrogen Atoms</a>	16 Feb 2022	03:30 PM
<a href="#">EMC Society Monthly Technical Meeting</a>	17 Feb 2022	05:30 PM
<a href="#">Current Transformer ("CT") Basics for System Protection - Lunch &amp; Learn</a>	24 Feb 2022	12:00 PM
<a href="#">Winter22 Semester Break MOVIE NIGHT=&gt; Celebrating Hedy Lamarr: Icon, Immigrant, Inventor</a>	28 Feb 2022	06:00 PM

*Note: All times are EST/EDT. If any events are missed do kindly bring them to the attention of [wavelengths@ieee-sem.org](mailto:wavelengths@ieee-sem.org). Thank you!*

## Chair's Column



This is the second column I am now sharing with all of the IEEE Southeastern Michigan community. We have launched a number of activities in order to bring value to our members (and that includes students!). First of all, we have initiated a review of our website (<https://r4.ieee.org/sem/>) freshening things up a lot. Old links are being removed, new ones are being updated, lists are rearranged in alphabetical order, so things are easier to locate.

All of our social media sites:

- ✓ Facebook ~ <https://www.facebook.com/groups/ieeesemich>
- ✓ LinkedIn ~ <https://www.linkedin.com/groups/1766687/>
- ✓ Twitter ~ <https://www.twitter.com/ieeesemich>

...are receiving updates as much as possible given the time we have as volunteers. I would like to encourage all our members to consider volunteering to the role of our social media moderators, which is easy to do, and we would be happy to show you're the ropes. Essentially it involves noticing articles of EE technical interest and sharing it on those sites. Of

course, our Section events take top priority 😊! Feel free to reach out to any of the section officers and connect so we can put you in touch with the right people.

Upcoming events in our region are plenty. We have the annual R4 sponsored event **EIT 2022** coming up, this year being held in Minnesota. Also, the 9<sup>th</sup> global event – **SusTech 2022** takes place virtually and they are inviting student research posters competition (see the flyer on page 9 in this issue), there are substantial cash prizes for the winners. **ECCE 2022** takes place in Detroit this year (flyer on page 6). The IEEE Reliability Society is hosting **PHM 2022** also in Southeastern Michigan, folks should consider participating in it (flyer on page 8). National Engineers Week is celebrated in the month of February.

On January 13<sup>th</sup> we held our first ExCom meeting. Minutes will be published to Collabratec, which is the next thing I wanted to talk about. In the distant past, IEEE-HQ had a couple of forays or attempts at hosting an exclusive online community for our members and finally the IEEE-Collabratec product is the best of all worlds – it combines features of a bulletin board, discussion forum, elements of FaceBook-like and LinkedIn-themed style formats – all in 1 spot!. They served the purpose but were not terribly user friendly and clunky at best. Collabratec (<https://ieee-collabratec.ieee.org/>) – which is far more easier to navigate, offers lots of choices, is better integrated with your IEEE membership profile, and is monitored by IEEE folks, so you can search IEEE resources and connect with fellow members at the same time, w/o having to switch platforms. We even have our own Southeastern Michigan Workspace there! (See [LINK](#)). However, workspace is slightly different than community space. The former is geared towards *section specific activity*, whereas the latter is more *general in nature*.

I would love to hear from everyone, the full list of ExCom meetings and their links has been published. I also plan to reach out to all the Student branches and re-engage them with our Section. In these days of pandemic restrictions, it is important NOT to lose touch with our past, current, future potential members and remain engaged w/ our community!

**Sharan Kalwani**

Via email: sharan dot kalwani At IEEE dot org

Section members are encouraged to engage using any of these online platforms:



## Technical Activities Report

2022 IEEE SE Michigan Section Geo-unit Status (Till Jan 28th)

Ch's & AG's	Ave Tech Mtg. Attend	Ave Tech Mtg Guest	#L31 - Technical	#L31 -Admin	#L31 Professional	#L31 -Other	Geo-Unit Name	# Unreported	Total Mtgs
Cnslt	0	0	0	0	0	0	Consultants Network	0	0
LIFE	0	0	0	0	0	0	Life Members	0	0
WIE	0	0	0	0	0	0	Women In Engineering	0	0
YP	0	0	0	0	0	0	Young Professionals	0	0
1	0	0	0	0	0	0	Circuits & Systems, Signal Proc., Info Th.	0	0
2	0	0	0	0	0	0	Vehicular Technology	0	0
3	0	0	0	0	0	0	Aerospace & Elec. Sys., Communications	0	0
4	0	0	0	0	0	0	Trident (Ant, Elect Dev., uWave, Photo)	0	0
5	13	0	1	0	0	1	Computers	0	2
6	0	0	0	0	0	0	Geoscience & Remote Sensing	0	0
7	0	0	0	0	0	0	Power Engineering, Industrial App.	0	0
8	35	17	1	1	0	1	Electromagnetic Compatibility (EMC)	0	3
9	0	0	0	0	0	0	Power Electronics, Industrial Electronics	0	0
10	0	0	0	0	0	0	Engineering Management	0	0
11	55	37	1	0	0	0	Eng. in Medicine & Biology	0	1
12	0	0	0	0	0	0	Control Systems	0	0
13	13	0	1	0	0	1	Education	1	2
14	0	0	0	0	0	0	Robotics & Automation	0	0
15	55	37	1	0	0	0	Nuclear Plasma Science Society	0	1
16	0	0	0	0	0	0	Computational Intelligence / Sys.Man.Cyber.	0	0
17	0	0	0	0	0	0	Nano Technology Council	0	0
SEM	0	0	0	2	0	0	SEM (Section)	2	2

The monthly Section Health report now includes columns representing the numbers of Unreported Meetings see Column I, (#Unreported) as well as Total Meetings Column J see (Total Mtgs) for each GA. GA leaders are requested to review the report and clarify any unreported meeting activity by either submitting the appropriate L31 status report or by contacting the undersigned for assistance.

Our Section receives funds to support our technical meetings as a result of the reported meetings from our GAs. Let's start this year as strong as possible, by getting our meeting reports into the system. Remember that our technical chapters and societies can request Section funds for snacks and beverages etc. in support of live meetings. Please contact our Section Treasurer or myself

Please endeavor to engage your group membership by: 1. Meeting live or virtually to discuss IEEE presentations or other technical content germane to your group; 2. Invite members or outside speakers to present relevant technical achievements and or issues; and 3. Collaborate with other GAs on relevant joint technical topics of interest via webinar. These are just a few suggestions to maintain healthy technical interchanges within our Section. Your Technical Activities Committee (TACom) stands ready to assist as needed. Stay well and stay safe.

Jeff Mosley

Chair, Technical Activities Committee, R4 IEEE SE Michigan, [jvmosley@ieee.org](mailto:jvmosley@ieee.org)





IEEE ENERGY CONVERSION CONGRESS & EXPO **Detroit, Michigan, USA Oct. 9-13**

## IMPORTANT DATES

**January 15, 2022**

Digest submission

**May 1, 2022**

Author notification

**July 1, 2022**

Final papers with  
IEEE copyright forms

## Call for Papers



**General Chair**  
**Emmanuel Agamloh**  
*Baylor University, USA*

**ECCE 2022 Technical  
Program Co-Chairs**

**Navid R. Zargari**  
*Rockwell Automation, Canada*

**Annette Muetze**  
*Graz University of Technology,  
Austria*

**Andrea Cavagnino**  
*Politecnico di Torino, Italy*

**Mohammad Islam**  
*Halla Mechatronics, USA*

**Gerry Moschopoulos**  
*University of Western Ontario,  
Canada*

**Brandon Grainger**  
*University of Pittsburgh, USA*

**Contact email:**  
[ecce2022pc@gmail.com](mailto:ecce2022pc@gmail.com)

The Fourteenth Annual IEEE Energy Conversion Congress and Exposition (ECCE 2022) will be held in Detroit, Michigan, USA, from October 9 to October 13, 2022. ECCE is a pivotal international event on energy conversion. ECCE 2022 will feature both industry-driven and application-oriented technical sessions as well as an exposition. The conference will bring together practicing engineers, researchers and other professionals for interactive and multidisciplinary discussions on the latest advances in areas related to energy conversion.

Technical papers are solicited on any subject pertaining to the scope of the conference including, but not limited to, the following major topics:

### Energy Conversion Systems & Applications

- ▶ High power/voltage power conversion
- ▶ High voltage isolation techniques
- ▶ Energy harvesting
- ▶ Energy conversion for information technology and communication systems
- ▶ Energy efficiency for residential, commercial, and industrial applications
- ▶ Big data and artificial intelligence in energy conversion
- ▶ Renewable and alternative energy power electronic systems
- ▶ Smart grids, microgrids, and utility applications (HVDC, FACTS, and Solid State Transformers)
- ▶ Electrical energy storage
- ▶ Wireless power transfer

### Component, Converter & Subsystem Technologies

- ▶ Power electronic devices (silicon and wide bandgap) and applications
- ▶ Passive components and materials
- ▶ Power electronic packaging integration
- ▶ Reliability, advanced fault protection systems, diagnostics, prognostics, and health management
- ▶ Thermal management and advanced cooling technologies
- ▶ Electromagnetic interference and electromagnetic compatibility
- ▶ Power conversion topologies, modulation, and control
- ▶ Electrical drive systems and topologies and their control
- ▶ Rotating/linear electromechanical devices
- ▶ Enabling technologies for Industry 4.0: advanced manufacturing, additive manufacturing, digital twins, cloud design, big data analytics

**Digest Submission:** Prospective authors are requested to submit a single column, single spaced digest no longer than five (5) pages summarizing the proposed paper. The digest should include key equations, figures, tables, and references as appropriate, but no author names or affiliations. Digests not conforming to these requirements will be rejected without review. The digests must clearly state the objectives of the work, its significance in advancing the state of the art, and the methods and specific results in sufficient detail. All digests will go through a double-blind peer review process to ensure a confidential and fair review. The papers presented at the conference will be included in the IEEE Xplore Digital Library. Please refer to the conference website for a detailed list of technical topics and the digest submission method.

[www.ieee-ecce.org/2022](http://www.ieee-ecce.org/2022)

**Detroit, Michigan, USA – October 9–13, 2022**

**2022 Future City****2022 IEEE Judging for the Future City Competition**  
*By Don Bramlett, SMIEEE*IEEE Judging for the Michigan Regional Future City Competition 2022  
By Don C. Bramlett, SMIEEE, FESD, FMSPE

This is the 22<sup>nd</sup> year that the IEEE-SEM Section has provided a dedicated team of judges and a special professional organization award for the project having the most innovative application of electrotechnology in the design of the city in the future. This is one of the premier pre-university STEM programs for energized middle school students. The Future City Competition in 2022 had the theme of “A Waste-Free Future.”

The competition and judging were conducted in a virtual format again this year. The student teams still had to prepare an essay and a model of part of the city, but the presentations were a YouTube recording accompanied model slide show. Due to the continuing pandemic there were only 8 team projects rather than the usual 30 or so. IEEE was one of only a few professional organizations to give professional awards rather than the usual 30.

The IEEE-SEM Section judging team members were Don Bramlett, Colleen Chmielewski, Charles Cohen, Bill Quinlan and Kimball Williams.

The professional organization judging was completed on January 12. The IEEE-SEM Section sponsored “Electrotechnology Award” was presented to the St. John Lutheran School Future City team for their project entitled “Detroit-FC.”

The final Michigan Regional Future City Competition category judging was conducted on January 25. The St. John Lutheran School team took first place and will represent Michigan in the national competition in February.

## CFP:EIT 2022



# eit2022



ANNOUNCEMENT and CALL FOR PAPERS (version October 16, 2021)  
**2022 IEEE INTERNATIONAL CONFERENCE  
 on ELECTRO/INFORMATION TECHNOLOGY**  
 May 19-21, 2022  
 Minnesota State University  
 Mankato, MN 56001  
<http://www.eit-conference.org/eit2022>

#### ORGANIZING COMMITTEE

**R4 eit2022 Conference Administrator**  
 James Riess, [j\\_riess@ieee.org](mailto:j_riess@ieee.org)

**EIT Conferences Founding General Chair**  
 Hossein Mousavinezhad, [hossein.mousavinezhad@ieee.org](mailto:hossein.mousavinezhad@ieee.org)  
 Idaho State University

**2022 Conference General Chair**  
 Vincent Winstead, [vincent.winstead@mnsu.edu](mailto:vincent.winstead@mnsu.edu)

**Program Chairs**  
 Constantin Apostoiaia, [apostoai@pnw.edu](mailto:apostoai@pnw.edu)  
 Xuanhui Wu, [xuanhui.wu@mnsu.edu](mailto:xuanhui.wu@mnsu.edu)

**Finance Chair**  
 Steve Kerchberger, [s.kerchberger@ieee.org](mailto:s.kerchberger@ieee.org)

**Professional Development Program Chair**  
 Tarek Lahdhiri, [lahdhiri@yahoo.com](mailto:lahdhiri@yahoo.com)

**Exhibits/Industry/Sponsorship Chair**  
 Hamid Vakilzadian, [hvakilzadian@unl.edu](mailto:hvakilzadian@unl.edu)  
 University of Nebraska Lincoln

**Publicity Chair**  
 Qun Zhang, [qun.zhang@mnsu.edu](mailto:qun.zhang@mnsu.edu)

**Local Arrangements Chair**  
 P. Megat-Hamari, [puteri.megat-hamari@mnsu.edu](mailto:puteri.megat-hamari@mnsu.edu)

**Registration Chair**  
 Jianwu Zeng, [jianwu.zeng@mnsu.edu](mailto:jianwu.zeng@mnsu.edu)

**Publication Chairs**  
 Afshin Izadian, [aizadian@iupui.edu](mailto:aizadian@iupui.edu)  
 IUPUI  
 Rahul Gomes, [GOMESR@uwec.edu](mailto:GOMESR@uwec.edu)

#### International Liaisons

Chengying Xu, [chengying.xu@ncsu.edu](mailto:chengying.xu@ncsu.edu)  
 Peter Dittlich, [peter.dittlich@fh-jena.de](mailto:peter.dittlich@fh-jena.de)  
 Hongwei Zhang, [h.zhang@shu.ac.uk](mailto:h.zhang@shu.ac.uk)  
 Hsiao-Hwa Chen, [hshwchen@mail.nsysu.edu.tw](mailto:hshwchen@mail.nsysu.edu.tw)

**eit 2022 Webmaster**  
 Bob Evanich, [b.evanich@ieee.org](mailto:b.evanich@ieee.org)

**Awards Chairs**  
 Sat Basu, [satbasu@ieee.org](mailto:satbasu@ieee.org), Hossein Mousavinezhad, Subra Ganesan,  
[ganesan@oakland.edu](mailto:ganesan@oakland.edu)

**ELECTRICAL MATERIALS COMPANY**  
 Products for the Utility Industry

The IEEE 2022 International Electro/Information Technology Conference, sponsored by the IEEE Region 4 (R4), in collaboration with Minnesota State University, IEEE Section, is focused on basic/applied research results in the fields of electrical and computer engineering as they relate to Electrical and Computer Engineering, Information Technology, and related applications. The purpose of the conference is to provide a forum for **researchers and industrial investigators** to exchange ideas and discuss developments in these growing fields. There will also be exhibits where the latest electro/information technology tools and products will be showcased. This is also an opportunity for professional activities development, workshops and tutorials. Topics of interest include but are not limited to:

- Robotics and Mechatronics
- Intelligent Systems and Multi-agent Systems
- Control Systems and System Identification
- Reconfigurable and Embedded Systems
- Power Systems and Power Electronics
- Solid State, Consumer and Automotive Electronics
- Electronic Design Automation
- Biomedical Applications, Telemedicine
- Biometrics and Bioinformatics
- Nanotechnology
- Micro Electromechanical Systems
- Wireless communications and Networking
- Ad Hoc and Sensor Networks
- Cyber Security
- Computer Vision
- Signal/Image and Video Processing
- Distributed Data Fusion and Mining
- Cloud, Mobile, and Distributed Computing
- Software Engineering and Middleware Architecture
- Engineering Education

#### Important dates:

- Submission of full papers: February 15, 2022
- Notification of acceptance: March 15, 2022
- Final manuscript (PDF) due: March 29, 2022
- Early registration: April 1, 2022

Keynote Speakers:

**Dr. Ned Mohan, University of Minnesota**

**Dr. Vitaly Herasevich, Mayo Clinic**

For more information, ideas for organizing/chairing sessions, industry participation, tutorials, professional activities sessions, please contact:  
**Drs. Winstead or Mousavinezhad.**

IEEE eit2022 International Conference Announcement and CFP



## Officer Training 2022

At the beginning of 2022 we offered a series of 'virtual' Officer Training classes on Wednesday evenings and discussion sessions on Sunday afternoons where questions could be raised and 'deep dives' into particular issues could be taken. We realized that many officers may not be able to attend even virtual classes at the times offered, so the classes are being recorded and archived for later viewing. (Registration for the 'live' classes is closed.)

The timing of the release of the recorded materials is still being discussed.

The officer training classes are expected to conclude at the end of February when the total of 16 total hour-long classes has been completed.

At the same time, the IEEE vTools suite of officer tools created and maintained by MGA is continuing to change and grow. Keeping up with the changes means some occasional 'fast foot work' and we are attempting to update the voice over PowerPoint training modules hosted on the SEM website. For the present, the system of training we created on the website several years ago is now completely out of date, and the lessons there are no longer in the order described by the instructions for their use.

Also, the link to a site to send comments or questions to a Google Group for the SEM Website training is no longer functional, and you should direct your questions to me at [k.williams@ieee.org](mailto:k.williams@ieee.org).

For anyone wishing to view the material on the Website do not rely on the list of module numbers in the instructions. Instead search for the topic by the module name, and that should allow you to find what you are seeking.

The SEM Website Training Material may be accessed at: <https://r4.ieee.org/sem/about-sem/training/>

If you are seeking directed training on most officer related topics, we continue to recommend that you check into the IEEE Center for Leadership Excellence (CLE) at: <https://ieee-elearning.org/CLE/>

The site may seem daunting at first, but its depth and breadth should eventually lead you to discover the topics you need to review or learn.

For those truly serious about learning all that the IEEE CLE can provide are encouraged to consider enrolling in the "Volunteer Leadership Training Program" (VOLT). To enroll, officers are required to have a minimum of two years' experience in IEEE leadership and be prepared to devote the time and energy needed to complete the course of study.

kw

### IEEE SEM Section Mission

Inspire – Enable – Empower and Engage Members of IEEE at the local level for the purpose of:

- Fulfilling the mission of IEEE (...**foster technological innovation and excellence for the benefit of humanity.**),
- Enhancing the members' growth and development throughout their life cycle, and
- Providing a professional home,

### Section Goals

- Increase member engagement,
- Improve relationships with and among members,
- Increase operational efficiency and effectiveness, within the section and its interfaces,
- Enhance collaboration – serve as the local face of IEEE to the community,
- Increase membership, and
- Ensure the collection of appropriate information necessary to assist the IEEE to become a data driven organization.

CFP:PHM 2022



Photo courtesy of Visit Detroit

The IEEE Reliability Society is seeking original papers for presentation at the **12th IEEE International Conference on Prognostics and Health Management (ICPHM 2022)**

Remote sessions will be planned for authors who can not make to the onsite conference.

The 2022 IEEE International PHM Conference will be held in Detroit, Michigan on June 6-8, 2022. PHM is a wide-ranging, interdisciplinary field, that requires an energized exchange of ideas. This conference will match-up world-class expertise in the academic, engineering, and management disciplines to create synergistic exchanges of ideas and practices among academics and industry practitioners. Special attention has been paid to assure a sociable, professional environment to encourage networking, forge new relationships, and deepen existing ones.

**PHM topics and applications include but are not limited to:**

- |  |  |
|--|--|
| <input type="checkbox"/> Energy Systems                | <input type="checkbox"/> Structures and Materials            |
| <input type="checkbox"/> Electronics Prognostics       | <input type="checkbox"/> Economics of PHM                    |
| <input type="checkbox"/> Vehicle Health Management     | <input type="checkbox"/> Railway Systems                     |
| <input type="checkbox"/> Powertrains                   | <input type="checkbox"/> Gas Turbines and Rotating Machinery |
| <input type="checkbox"/> Battery Health Management     | <input type="checkbox"/> Multimode Systems                   |
| <input type="checkbox"/> Algorithms and Implementation | <input type="checkbox"/> Aerospace Systems                   |

**Important Dates:**

Draft Full Paper Due	February 4, 2022
Notification of Acceptance	March 18, 2022
Author Registration Due	April 15, 2022
Final Manuscript Due	April 15, 2022
Conference Dates	June 6-8, 2022

All presented conference papers will be submitted to IEEE Xplore® for publication.



## CFP:SusTech2022 Students Poster Competition

# IEEE SusTech2022

9th Annual Conference / Riverside, CA / Virtual on April 21-23, 2022  
This Year's Theme: How Emerging Technologies Are Driving Sustainability

## Student Poster Contest - Call for Abstracts



<b>Key Dates</b>	Feb 15, 2022	Submission deadline for poster abstract
	Feb 28, 2022	Notification of Acceptance
	Apr 21, 2022	Final ONLINE Poster Display During Conference

**>>> Accepted posters must register for the contest and pay a submission fee <<<.**

For more information, abstract upload, and registration, please visit <https://iee-sustech.org/>

**Topics: Technologies that contribute to sustainability in all applications affecting human life.**

Internet of Things – IOT	Agriculture & Food Technology	Smart Grid
Renewable / Alternate Energy	Water Resources Management	Energy Efficiency
Societal Implications	Intelligent Transportation Systems	Sustainable Electronics
Quality of Life / Public Policy	Ocean Waste & Pollution	eWaste
Smart Cities	Ecological Sustainability & Conservation	Air Pollution

**Prizes:**

Prizes will be awarded for first, second and third places as determined by the judges. First place \$1000; second \$500; third(x2) \$250. Information on the winners will be posted on the IEEE SusTech and IEEE Region 6 websites.

**How to Submit?**

To participate in the contest students should write a 2-page (500-700-word) description (extended abstract) of the poster, along with authors names, respective university and contact details; and submit it in PDF at <https://iee-sustech.org/student-poster-contest/> by the deadline. Contestants will need to prepare a poster of 48 x 36 inches in PDF for **online presentation**.

**Poster Contest Chair: Dr. Sean Monemi** [seanmonemi@iee.org](mailto:seanmonemi@iee.org)



Coastal Los Angeles, Foothill,  
Metro LA, Orange County,  
Oregon, Phoenix, and San  
Fernando Valley Sections



## Member News



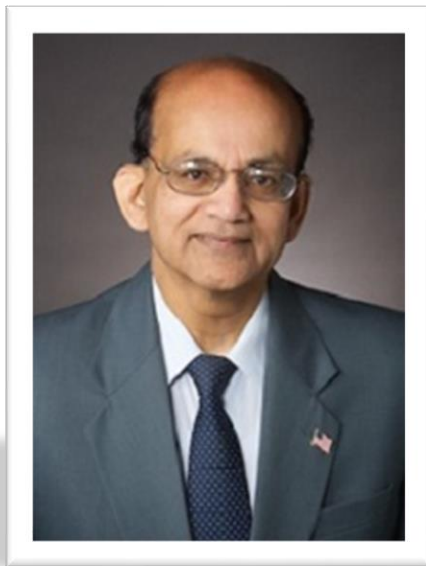
It is with great pleasure that we would like to share with all of our IEEE Southeastern Michigan community – that one of our own – Professor Subra Ganesan (w/ Oakland University) – was recently honored with the IEEE Region 4 “Outstanding Professional Award”. This was recently announced on their [LinkedIn](#) and R4 Facebook page.

From the Region 4 website the award description reads as follows:

*“Outstanding Professional Award*

*To recognize members of Region 4 who, through their technical abilities, have made outstanding contributions to their profession. It acknowledges the development of new technical concepts, significant patents, development of new devices, development of applications, new designs, considerable cost reductions using known techniques, etc.”*

Feel free to email Subra and congratulate him on this achievement!



## National Engineers Week

### National Engineers Week (U.S.)

In the United States, **National Engineers Week (aka Eweek)** is always the week in February which encompasses George Washington's actual birthday, February 22. It is observed by more than 70 engineering, education, and cultural societies, and more than 50 corporations and government agencies. The purpose of National Engineers Week is to call attention to the contributions to society that engineers make. It is also a time for engineers to emphasize the importance of learning math, science, and technical skills.

The celebration of National Engineers Week was started in 1951 by the National Society of Professional Engineers in conjunction with President George Washington's birthday, the nation's first engineer, notably for his survey work. Prior to the start of National Engineers Week, the [University of Missouri College of Engineering](#) began celebrating the world's first Engineers' Week in 1903, 48 years before the [National Society of Professional Engineers](#), with St. Patrick as the patron Saint of engineers.

The results of the [Federal Engineer of the Year Award](#) are also announced during the week.

This year 2022, it will occur the week of February 20-26. I will also be announcing via our IEEE SE Michigan Facebook, LinkedIn pages and Twitter posts about related upcoming Eweek events.

### References

1. ["Engineers Week | National Society of Professional Engineers" https://www.nspe.org/resources/partners-and-state-societies/engineers-week](https://www.nspe.org/resources/partners-and-state-societies/engineers-week)
2. ["2022 Theme: Reimagining the Possible" https://discovere.org/engage/engineers-week/](https://discovere.org/engage/engineers-week/)
3. <https://engineering.missouri.edu/current-students/engineers-week/>
4. "DiscoverE" (<http://www.discovere.org/our-programs/engineers-week>)
5. <https://asme.org/career-education/articles/students/engineering-go-brag>
6. <https://blog.cloudcalc.com/2016/03/15/saint-patrick-structural-engineer/>
7. Retrieved from '[https://en.wikipedia.org/w/index.php?title=National\\_Engineers\\_Week\\_\(U.S.\)&oldid=949638561](https://en.wikipedia.org/w/index.php?title=National_Engineers_Week_(U.S.)&oldid=949638561)

### Curated by

**Sharan Kalwani,**  
**Co-Editor, Wavelengths,**  
**2017~2018~2019~2020~2021~2022**  
**Email: [Sharan.Kalwani@ieee.org](mailto:Sharan.Kalwani@ieee.org)**



## From NSPE: National Engineers Week



Founded by NSPE in 1951, EWeek (February 20–26, 2022) is dedicated to ensuring a diverse and well-educated future engineering workforce by increasing understanding of and interest in engineering and technology careers.

Today, EWeek is a formal coalition of more than 70 engineering, education, and cultural societies, and more than 50 corporations and government agencies. Dedicated to raising public awareness of engineers' positive contributions to quality of life, EWeek promotes recognition among parents, teachers, and students of the importance of a technical education and a high level of math, science, and technology literacy, and motivates youth, to pursue engineering careers in order to provide a diverse and vigorous engineering workforce. Each year, EWeek reaches thousands of schools, businesses, and community groups across the U.S.

Quick short list of events:

February 20–26, 2022

Virtual vs In-Person

Each second Wednesday of the month.

On-demand Webinar

February 24, 2022

March 4, 2022

[Engineers Week](#)

[Future City Competition](#)

[DiscoverE Persist Series](#)

[Future of Engineering - NSPE Webinar](#)

[Federal Engineer of the Year Award Ceremony](#)

[World Engineering Day](#)



### DiscoverE Persist Series

**Each second Wednesday of the month.**

The DiscoverE Persist Series (formerly the Global Marathon) is a worldwide speaker series building staying power for women in engineering and tech.

Each second Wednesday of the month, join thousands of women around the world to hear inspiring stories and candidly discuss topics like inclusive workplace cultures, being an active bystander to casual bias, and developing a growth mindset.

[LEARN MORE](#)



### World Engineering Day

March 4, 2022

An international day with celebrations across the world is an opportunity to increase the profile of engineering. The Day is also an opportunity to engage with government and industry to address the need for engineering capacity and the quality of engineers around the world and develop strategic frameworks and best practices for the implementation of engineering solutions for sustainable development. The celebration of World Engineering Day is also about promoting engineering as a career and how it is an opportunity to change the world for better.

Learn more [here](#) and [here](#).



### Future City Competition®

Future City is continuing several adaptations that were made due to the COVID-19 pandemic. Visit the [Future City](#) for continued important updates throughout the program cycle!

Future City asks middle-school students to imagine, design, and build cities of the future. After four months of designing a virtual city (using SimCity), researching, designing, and writing up their solution to a city-wide issue and building a scale model of their city, teams will present their vision to a panel of judges. After the competition is over, student participants are not only prepared to be citizens of today's complex and technical world, they are poised to become the drivers of tomorrow.

[LEARN MORE](#)



### DiscoverE®

DiscoverE engineers share a common desire: to help grade school and high school students discover the exciting worlds of engineering and technology. Their goal is to relate practical applications of math, science, and engineering to the world around them. The information in this DiscoverE section will help you plan activities for Engineers Week or anytime you work with students. The Engineers Week Committee encourages you to continue your partnership with local schools throughout the year.

[LEARN MORE](#)

#### Curated by

**Sharan Kalwani,**  
**Co-Editor, Wavelengths,**  
**2017~2018~2019~2020~2021~2022**  
**Email: [Sharan.Kalwani@ieee.org](mailto:Sharan.Kalwani@ieee.org)**

## Need Science Fair Judges!

### IEEE-SEM MEMBERS NEEDED AS 2022 SCIENCE FAIR JUDGES

By Don C. Bramlett, LSMIEEE, FMSPE, FESD

Please volunteer to serve on the elite panel of judges for the **professional awards** being sponsored by the Southeastern Michigan Section of the Institute of Electrical and Electronics Engineer, Inc. (IEEE-SEM) at the 65th Annual Science and Engineering Fair of Metropolitan Detroit (SEFMD). This is the 27th straight year that the IEEE-SEM Section has provided judges and sponsored **professional awards** for projects associated with electrical, electronics, computer engineering and IEEE related fields.

The Science Fair and judging will again be conducted in a virtual manner. Students will provide a project presentation (up to 12 pages in a pdf format) and a short video link. There will be no interviews for the **professional awards**. The Science Fair and I will communicate further details to those that will be IEEE judges. Session 1 judging, which includes **professional awards** judging, will be completed prior to March 25, 2022.

It is necessary that if you are already registered as a Science Fair judge or a new judge, to go to the Science Fair website: <https://www.sefmd.org>

Judging: *Identify you will be judging as part of the IEEE **professional awards** judging team during Session 1. Also provide the information for a background check with the Michigan State Police. Inform me if you are registered to be an IEEE **professional awards** judge, at [d.bramlett@ieee.org](mailto:d.bramlett@ieee.org)*

Like last year, IEEE-SEM plans to provide judging for both the Junior (6<sup>th</sup> – 8<sup>th</sup> grade) Division and the Senior (High School) Division. IEEE-SEM will tentatively make three Grand Awards, including personalized certificates and cash prizes, and several Outstanding Achievement Awards, consisting of personalized certificates.

This year, like last year, some projects in the IEEE related fields may be found in the categories of Systems Software, Robotics & Intelligent Machines, Physics & Astronomy, Environmental Engineering, Engineering Mechanics, Energy: Physical, Energy: Chemical, Embedded Systems, etc. Students in Wayne, Oakland, Macomb, Lenawee, Livingston, Monroe, and Washtenaw counties will participate in the Science Fair. So, this year again will be a real interesting experience judging the Junior Division and Senior Division projects.

Based on the number and quality of the selected project displays, the judges may choose to use the supplied Project Evaluation and Judging Forms to grade the projects in each Division or to use a less formalized process, as deemed appropriate.

Please direct any questions you may have to me on my cell phone at 313-608-6223; or you may contact me at my e-mail address [d.bramlett@ieee.org](mailto:d.bramlett@ieee.org) .



## ORG UNITS cheat sheet

**Section Unit Name or Affinity Group or Chapter Name (Organizational Unit is in parentheses)**

Consultants Network Affinity Group: (CN40035)

Life Members: (LM40035)

Young Professionals: (YP40035)

Women in Engineering: (WE40035)

Chapter: 01 (CH04049) (SP01) Signal Processing Society,  
(CAS04) Circuits and Systems Society and  
(IT12) Information Theory Society

Chapter: 02 (CH04051) (VT06) Vehicular Technology Society

Chapter: 03 (CH04053) (AES10) Aerospace and Electronic Systems Society and  
(COM19) Communications SocietyChapter: 04 (CH04050) (AP03) Antennas and Propagation Society,  
(ED15) Electron Devices Society,  
(MTT17) Microwave Theory and Techniques Society,

Chapter: 05 (CH04055) (C16) Computer Society

Chapter: 06 (CH04056) (GRS29) Geosciences and Remote Sensing Society

Chapter: 07 (CH04057) (PE31) Power Engineering Society,  
(IA34) Industrial Applications Society

Chapter: 08 (CH04088) (EMC27) Electromagnetic Compatibility Society

Chapter: 09 (CH04087) (IE13) Industrial Electronics Society,  
(PEL35) Power Electronics Society

Chapter: 10 (CH04142) (TEM14) Technology and Engineering Management Society

Chapter: 11 (CH04099) (EMB18) Engineering in Medicine &amp; Biology

Chapter: 12 (CH04103) (CS23) Control Systems Society

Chapter: 13 (CH04113) (E25) Education Society

Chapter: 14 (CH04115) (RA24) Robotics And Automation Society

Chapter: 15 (CH04144) (NPS05) Nuclear Plasma Sciences Society

Chapter: 16 (CH04125) (CIS11) Computational Intelligence Society,  
(SMC28) Systems, Man and Cybernetics Society

Chapter: 17 (CH04128) (NANO42) Nanotechnology Council

**Section Unit Name or Affinity Group or Chapter Name (Organizational Unit is in parentheses)**

University Of Detroit-Mercy: (STB00531)

Michigan State University: (STB01111)

University Of Michigan-Ann Arbor: (STB01121)

Wayne State University: (STB02251)

Lawrence Technological University: (STB03921)

Oakland University: (STB06741)

Eastern Michigan University: (STB11091)

University of Michigan-Dearborn: (STB94911)

HKN Code	HKN Name (Student IEEE Honor Society)
HKN029	University of Michigan-Ann Arbor, Beta Epsilon
HKN042	University of Detroit-Mercy, Beta Sigma
HKN054	Michigan State University, Gamma Zeta
HKN073	Wayne State University, Delta Alpha
HKN163	University of Michigan-Dearborn, Theta Tau
HKN164	Lawrence Institute of Technology, Theta Upsilon
HKN190	Oakland University, Iota Chi
HKN244	Southeastern Michigan Alumni

Organization Unit IEEE Code	Student Technical Chapter name
SBC00531	University of Detroit-Mercy, Computer Society Chapter
SBC02251	Wayne State University, Computer Society Chapter
SBC03921	Lawrence Tech University, Computer Society Chapter
SBC06741	Oakland University, Engineering in Medicine & Biology

Why do we publish this? Well, this is most useful when searching the vTools page for entering L31s or creating new events or searching for existing events!

**Curated & Maintained By**

**Sharan Kalwani,**

**Chair, IEEE SE Michigan Education Society Chapter**

**Vice-Chair, IEEE SE Michigan Computer Society Chapter**

**Editor, Wavelengths,**

**2018~2019~2020~2021~2022**

**Profile: Section Vice Chair**

Introducing our IEEE Southeastern Michigan Section Vice-Chair: Dr. Mohamad Berri

Dr. Mohamad Berri is a product design and system engineer with over 30 years of expertise in a variety of product development disciplines including powertrain, multimedia, and chassis. He is also exceptionally skilled in control systems design, computer-aided engineering modeling, model-based system engineering, Cameo, Sysml Modeling, and electro-mechanical simulations.

Dr. Berri is a goal-oriented individual with an extensive understanding of system design approaches. He uses analytical reasoning and personal experience to overcome hurdles and achieve desired outcomes. Dr. Berri is a self-starter who works effectively with cross-functional teams, including those responsible for product development, engineering, production, and buying. As an International Service Employee for Ford Motor Company, Dr. Berri exemplified his leadership skills by supervising a team of 20 engineers in System Engineering and Electrical Distribution Systems in Chennai, India.

In addition to his professional experience as an engineer, Dr. Berri has served as adjunct professor and has taught various graduate and undergraduate level courses in Electrical Engineering and Control Systems at Wayne State University, the University of Michigan Dearborn, and Lawrence Technological University over the past two decades.

Dr. Berri is an IEEE Senior Member. He has served on the IEEE Southeastern Michigan (SEM) Section's Executive Committee for more than two decades. His various positions include the SEM Section's Director of Membership, Chair of the SEM History Committee, and Chair of the SEM Section's Vehicular Technology and Control Systems chapters. At the IEEE regional level, he has served as Chair of the IEEE Region 4 Membership and History Committees. He is presently a member of Region 4's Executive Committee and serves as Vice Chair of the Award Committee. He is also a member of the MGA's national Membership Committee.

Please consider joining IEEE as a member to take advantage of the many opportunities and experiences the organization offers while expanding your professional network. If you are a current IEEE member and have 10 years of significant performance in your profession, please consider applying for IEEE Senior membership elevation. Holding a Ph.D. degree is considered as five years of significant performance, whereas an M.S. degree is considered as three years of significant performance. If you are interested in becoming a new or senior member, please email Dr. Berri your curriculum vitae at [mberri@ieee.org](mailto:mberri@ieee.org) and he will initiate your online application. He will also provide you with additional information to complete your application, including submission of two references. For further information, email [mberri@ieee.org](mailto:mberri@ieee.org) or see the entire senior member criteria.

Additionally, we are seeking volunteers to join the Southeastern Michigan Section's Membership Committee. If you're interested in technical engagement, you may join Dr. Berri as an active volunteer and play a significant role on the membership committee. If interested, please don't hesitate to contact Dr. Berri at [mberri@ieee.org](mailto:mberri@ieee.org).



**RoboFest Update**

Robofest eNewsletter 01-12-22

- (1) Robofest World Championship Format Update
- (2) Kickoff II Meeting Saturday, January 15 at 10:00 am on Zoom
- (3) Robofest Beginner Workshop Dates Scheduled
- (4) Mentors looking for Teams in Plymouth-Canton, MI
- (5) 2022 Robofest Game \*OceanBots\* Rules to be Finalized Jan 18
- (6) Annual Report and Assessment Reports Posted
- (7) MCWT Grant for All-Girl Robofest Teams
- (8) Site Host Opportunity Returns for 2022
- (9) Warmup Competition/Judge Training February 12 at 1:00 pm at LTU
- (10) LTU Robofest Scholarship Opportunity

*Note: All times are listed in EST unless noted otherwise....*

-----

**(1) Robofest World Championship Format Update**

Due to the uncertainty of the pandemic variants, Lawrence Technological University has restricted all large gatherings of non-LTU student groups on campus. The In-Person, May 12-14, 2022 Robofest World Championship events will be moved to an online format. We are still committed to hosting Robofest Online World Championship events and are planning to have the 2022 season completed by mid-May. We will be releasing the updated ROWC schedule during the "Kickoff II" meeting (See Item 2) and in a subsequent general rules update.

**(2) Kickoff II Meeting Saturday, January 15 at 10:00 am on Zoom**

Site Hosts, coaches, volunteers, and corporate partners ~ please join us via Zoom on January 15 at 10:00 am for the kickoff meeting to introduce the rules and FINAL PLANS for the upcoming 23rd Robofest season. The meeting slides and link to the recorded meeting will be posted on the Get Involved/2022 Main Page.

To Join the Zoom Meeting, click: <https://ltu.zoom.us/j/95877755557?pwd=cWd2NnFEUThMWGZqcExocTJ0UjBadz09>

Or login directly with meeting ID: 958 7775 5557 and Passcode: 649126

**(3) Robofest Beginner Workshop Dates Scheduled**

The 2022 workshops will be held in-person in the Computer Science Robotics Lab - J234. Registration is free, but teams must be registered and paid for a qualifier. (Qualifier pre-registration is available)

Sat, Jan 22, 9:00am ~ Noon: VEX IQ with Robot Mesh

Sat, Jan 22, 1:00pm ~ 4:00pm: LEGO EV3 with Scratch for Game

Sat, Mar 12, 9:00am ~ Noon: LEGO Spike Prime / Robot Inventor with Scratch

Sat, Mar 12, 1:00pm ~ 4:00pm: VEX IQ with VEXcode

Sat, Mar 19, 9:00am ~ Noon: LEGO Spike Prime / Robot Inventor with Python

Registration is open. To register your students, select \*Available Workshops\* on the left menu of the registration page on [Robofest.net](http://Robofest.net).

**(4) Mentors looking for Teams in Plymouth-Canton, MI**

Do you have a Robofest team in need of mentorship? A group of Middle School and High School robotics students/competitors in the Plymouth Canton Community School district would like to offer their time and expertise to local Robofest teams. The students are district, state, and world champions in the FIRST Robotics Competition students are proficient in several different programming languages and algorithmic thinking, perfect for the style of LEGO Mindstorms coding that is present in Robofest. If you are interested in connecting with a student mentor for your Robofest team, please send an email to Shannan Palonis ([spalonis@ltu.edu](mailto:spalonis@ltu.edu)) with the subject line Mentor Wanted along with your contact information and we will forward it to the group.

(5) 2022 Robofest Game \*OceanBots\* Rules to be Finalized Jan 18

The 2022 Game rules have been modified slightly to add clarifications and FAQs. The updated version has been posted to the Robofest.net website. Click on the Get Involved/Game page. The US Final rules will be finalized on January 18. If you have any questions about the rules that you would like to have clarified, please send an email to Shannan Palonis ([spalonis@ltu.edu](mailto:spalonis@ltu.edu)) and we will answer them in the FAQ and/or update the rules to add clarity.

(6) Annual Report and Assessment Reports Posted

The 2020-2021 Robofest Annual Report and Assessment Report have been posted to the What's New section on the Robofest.net home page or directly at: <https://robofest.net/images/2021/robofest21report.pdf> and <https://robofest.net/images/2021/robofest21assessment.pdf>. The Annual Report includes site and team statistics and the Assessment Report includes links to the anonymous survey results.

(7) MCWT Grants for All-Girl Robofest Teams

The Michigan Council of Women in Technology Foundation, 18-year sponsor of Robofest, is once again providing \$500 grants for up to ten Michigan all-girl Robofest teams for the 2022 Robofest Game and Exhibition competitions. More information, the application and deadline will be posted to their webpage: <https://mcwt.org/programs/list/K-12-Initiatives/ROBOTICS-GRANTS>

(8) Site Host Opportunity Returns for 2022

Robofest is seeking site hosts for the following categories: Game Qualifiers, Exhibition Qualifiers, BottleSumo, RoboParade and other Open Category events during the Spring of 2022. Returning Site Hosts may contact the Robofest Office at [spalonis@ltu.edu](mailto:spalonis@ltu.edu) to start the registration process. The online application is available on the Registration page. Downloadable forms and What's New Site Host Information and FAQ documents are now available on the For Site Hosts page on the [Robofest.net](http://Robofest.net) website.

(9) Warmup Competition/Judge Training February 12 at 1:00 pm at LTU

This event is still scheduled to be hosted in-person on Saturday, Feb 12, 2022 from 1:00pm ~ 5:30pm in Room J234 in the Taubman Complex. Teams who would like to participate should send an email to [spalonis@ltu.edu](mailto:spalonis@ltu.edu). Check-in for registered teams begins at 1:00 pm and Judge training will start at 1:45 pm. We invite and encourage Michigan Site Hosts and Volunteer Game Judges to attend. Registration for judges will open on January 20.

(10) LTU Scholarship Opportunity for all Robofest Participants

High School students who have participated in Robofest at any time and who are planning to attend LTU, can apply for a \$3,000 renewable scholarship (Total of \$12,000). Submit a 400-word essay describing your Robofest experience and your career goals, a letter of recommendation from one of your Robofest adult coaches or mentors, and the Scholarship Application by April 1, 2022. To find more information visit: [https://www.ltu.edu/financial\\_aid/scholarships-freshmen.asp](https://www.ltu.edu/financial_aid/scholarships-freshmen.asp)

---

Lawrence Technological University / Robofest / J-233 / 21000 W. Ten Mile Rd, Southfield, MI 48075

Dr. Christopher Cartwright, Director, [cwright@ltu.edu](mailto:cwright@ltu.edu)

Elmer Santos, Assistant Director, [esantos@ltu.edu](mailto:esantos@ltu.edu)

Shannan Palonis, Coordinator, [spalonis@ltu.edu](mailto:spalonis@ltu.edu)

Pam Sparks, Coordinator, [psparks@ltu.edu](mailto:psparks@ltu.edu)

Dr. CJ Chung, Advisory Board Chairperson, [cchung@ltu.edu](mailto:cchung@ltu.edu)

<https://www.robofest.net/>

<https://facebook.com/robofest>

## Activities & Events

We try to publish IEEE events in several places to ensure that everyone who may want to attend has all the available relevant information. **NOTE: The IEEE SE Michigan section website is located at <http://r4.ieee.org/sem/>**

### SEM Wavelengths:

<https://r4.ieee.org/sem/about-sem/sem-history/wavelengths-magazine-archive/>

### SEM Calendar of events:

<https://r4.ieee.org/sem/sem-calendar/>

Select “SEM Calendar” button in the top row of the website. This is our ‘Active’ event listing site where everyone should look first to see what events are scheduled for our Section in the near future.

### SEM Collabratec Workspace:

<https://ieee-collabratec.ieee.org/app/workspaces/5979/IEEE-Southeastern-Michigan-Section/activities>

An IEEE supported space for online chat, discussions, connecting with other global IEEE entities, besides our local Michigan folks.

### vTools Meetings:

<http://sites.ieee.org/vtools/>

Select “Schedule a Meeting” button in the left-hand column of buttons.

## Other Happenings

Here are some of the non-IEEE functions that may be of interest to you or someone you know. Let us know if you have a special interest in a field that encourages technical study and learning, and wish to share opportunities for participation with members of the section. **NOTE: You may need to copy the URL and paste it into your browser address bar.**

Send details to: [wavelengths@ieee-sem.org](mailto:wavelengths@ieee-sem.org) OR [letters@ieee-sem.org](mailto:letters@ieee-sem.org)

.....

**Michigan Institute for Plasma Science and Engineering:** Seminars for the 2021-2022 academic year:

[https://mipse.umich.edu/seminars\\_2122.php](https://mipse.umich.edu/seminars_2122.php)

### Model RC Aircraft

<http://www.skymasters.org>

### Model Rocketry

<https://www.nar.org/find-a-local-club/nar-club-locator/>

### Astronomy

<http://www.go-astronomy.com/astro-clubs-state.php?State=MI>

### Experimental Aircraft Association

<https://www.eaa.org/en/ea/ea-chapters/find-an-eaa-chapter>

### Robots

<https://www.robofest.net/index.php/about/contact-us>

### Science Fiction Conventions

<https://2021.penguicon.org/>

<http://www.confusionsf.org/>

### Mad Science

<http://www.madscience.org/>

### ESD PE Review Class

<https://www.esd.org/programs/pe/>

### Maker Faire:

<https://swm.makerfaire.com/>

**Executive Committee**

The SEM Executive Committee is the primary coordination unit for Southeastern Michigan (SEM) IEEE operations. The basic organization chart below shows the 2019/2020/2021/2022 arrangement of communications links designed to provide inter-unit coordination and collaboration.

The SEM Executive Committee meets in a teleconference each month on usually on a Thursday at 6:30 pm. The specific meeting days, times, phone or WebEx numbers and log in codes are published on the IEEE SEM Website calendar: <http://r4.ieee.org/sem/> Click on the “Calendar” button in the top banner on the first page of the web site.

If you wish to attend, or just monitor the discussions, please contact **Bhupinder Mavi/Christopher Johnson**, the section secretary at: [bmavi@outlook.com](mailto:bmavi@outlook.com), [cgjohnson@ieee.org](mailto:cgjohnson@ieee.org) and request to be placed on the distribution list for a monthly copy of the agenda and minutes. More meeting details are available on the next page of this newsletter.

**Other Meetings:**

About half of our members maintain memberships in one or more of the IEEE technical societies, which automatically makes them members of the local chapter which is affiliated with that society. As a result, they should receive notices of the local chapter meetings each month.

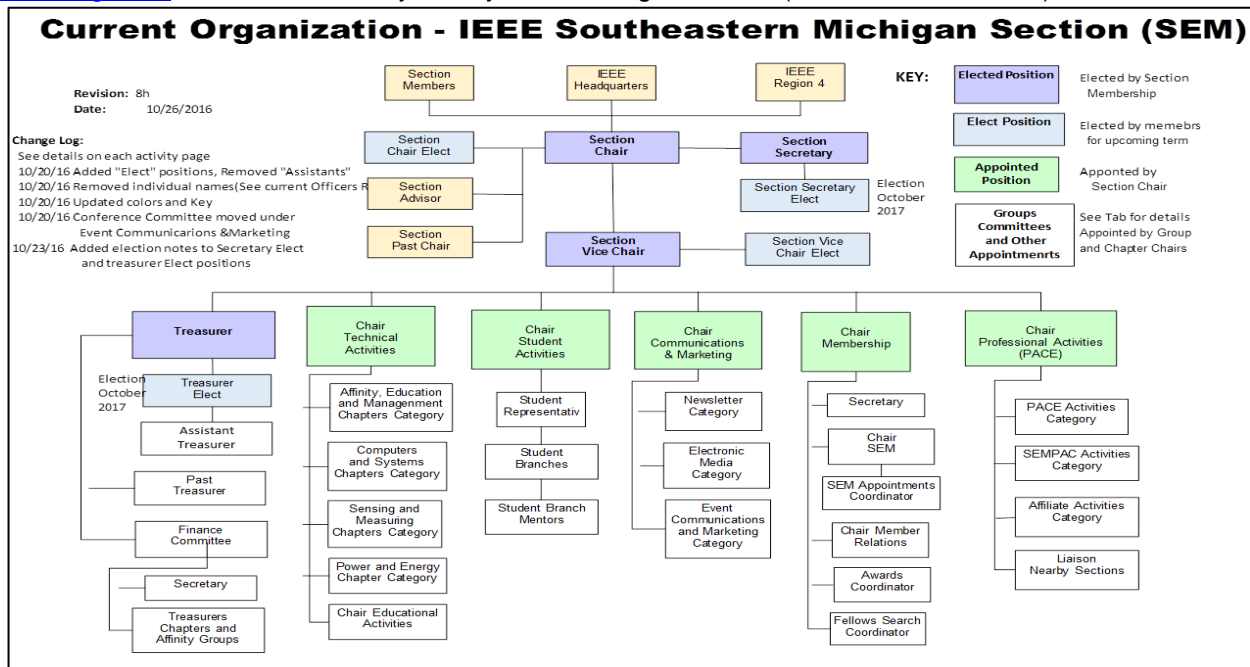
However, members of the section may have multiple technical interests and would like to have meeting information of other chapters. In order to communicate the meeting dates of all the chapters, affinity groups etc., to our members to facilitate their attendance, leaders of the groups are requested to send meeting information to our webmasters for posting on section’s calendar.

More detailed information on meetings may be found through the IEEE SEM Website: <http://r4.ieee.org/sem/> and clicking on the **SEM meetings list** button near the bottom of the left-hand banner.

Automatic e-mail notification of web updates may be received using the “**Email Notifications**” button at the top of the **SEM Tools/Links** side banner.

*Bhupinder Mavi, Christopher Johnson (Secy-Elect)*

If you wish to download the complete SEM Organization Chart, in PDF format, it will be made available soon at <http://r4.ieee.org/sem/> . In the meantime, you may use the diagram below (soon to be refreshed!)





## ExCom Meeting Schedule

**NOTE: All SEM members are invited to attend ALL ExCom (Executive Committee) meetings:**

Below is the 2022 schedule for the Section ExCom meetings with links to add the events to your calendar. It is important that at least one person from each Chapter/Affinity Group attends each scheduled ExCom meeting. Please mark your calendars for the 2022 meetings. Or, link your personal calendar to the SEM Web calendar.

### Section Administrative Committee (ExCom) Meeting Schedule for 2022:

**Note:** All IEEE Members are welcome at any IEEE meeting, at any time but please register so we can be sure to accommodate you. This month's meeting is highlighted in **Bold**.

<i>ExCom Meeting</i>	<i>Date &amp; Time</i>
<b>Feb 10,2022 - SEM Section ExCom Monthly Meeting (Teleconference) for February 2022</b> <a href="https://events.vtools.ieee.org/m/289866">https://events.vtools.ieee.org/m/289866</a>	6:30 PM
March 03,2022 - SEM Section ExCom Monthly Meeting (Teleconference) for March 2022 <a href="https://events.vtools.ieee.org/m/289867">https://events.vtools.ieee.org/m/289867</a>	6:30 PM
April 07,2022 - SEM Section ExCom Monthly Meeting (Teleconference) for April 2022 <a href="https://events.vtools.ieee.org/m/289868">https://events.vtools.ieee.org/m/289868</a>	6:30 PM
May 05,2022 - SEM Section ExCom Monthly Meeting (Teleconference) for May 2022 <a href="https://events.vtools.ieee.org/m/289869">https://events.vtools.ieee.org/m/289869</a>	6:30 PM
June 02,2022 - SEM Section ExCom Monthly Meeting (Teleconference) for June 2022 <a href="https://events.vtools.ieee.org/m/289870">https://events.vtools.ieee.org/m/289870</a>	6:30 PM
July 07,2022 - SEM Section ExCom Monthly Meeting (Teleconference) for July 2022 <a href="https://events.vtools.ieee.org/m/289871">https://events.vtools.ieee.org/m/289871</a>	6:30 PM
August 04,2022 - SEM Section ExCom Monthly Meeting (Teleconference) for August 2022 <a href="https://events.vtools.ieee.org/m/289872">https://events.vtools.ieee.org/m/289872</a>	6:30 PM
Sept 01,2022 - SEM Section ExCom Monthly Meeting (Teleconference) for September 2022 <a href="https://events.vtools.ieee.org/m/289873">https://events.vtools.ieee.org/m/289873</a>	6:30 PM
October 06,2022 - SEM Section ExCom Monthly Meeting (Teleconference) for October 2022 <a href="https://events.vtools.ieee.org/m/289875">https://events.vtools.ieee.org/m/289875</a>	6:30 PM
Nov 03,2022 - SEM Section ExCom Monthly Meeting (Teleconference) for November 2022 <a href="https://events.vtools.ieee.org/m/289876">https://events.vtools.ieee.org/m/289876</a>	6:30 PM
Dec 01,2022 - SEM Section ExCom Monthly Meeting (Teleconference) for December 2022 <a href="https://events.vtools.ieee.org/m/289877">https://events.vtools.ieee.org/m/289877</a>	6:30 PM

**Bhupinder Mavi (SEM Secretary 2021), Christopher Johnson (Secretary Elect)**  
[bmavi@outlook.com](mailto:bmavi@outlook.com) and [cgjohnson@ieee.org](mailto:cgjohnson@ieee.org)

**Editorial Corner**

Previous editions in this series may be found on the IEEE SEM website at: <http://r4.ieee.org/sem/>. Click on the “Wavelengths” button in the top row of selections.

Comments and suggestions may be sent to the editorial team at [wavelengths@ieee-sem.org](mailto:wavelengths@ieee-sem.org)

OR

[sharan.kalwani@ieee.org](mailto:sharan.kalwani@ieee.org)

[d.romanchik@ieee.org](mailto:d.romanchik@ieee.org)

[nilesh.dudhaia@ieee.org](mailto:nilesh.dudhaia@ieee.org)

[k.williams@ieee.org](mailto:k.williams@ieee.org)

[cjohnson@ieee.org](mailto:cjohnson@ieee.org)

[lunnmalcolm@me.com](mailto:lunnmalcolm@me.com)

[akio@emcsociety.org](mailto:akio@emcsociety.org)

We rely on our officers and members to provide the ‘copy’ that we finally present to readers of the newsletter.

The **Wavelengths Focus Plan and Personal Profiles** plan shown in the matrix below is presented to ensure coverage of section activities and events.

*We try to complete the newsletter layout a week before the first of the month to allow time for review and corrections. If you have an article or notice, please submit it two weeks before the first of the month or earlier if possible.*

The plan below relies on the contributions of our members and officers, so please do not be shy. If you have something that should be shared with the rest of the section, we want to give you that opportunity.

*We always encourage all chapters and student branches to share news of activities (both past and future) in their arenas. Please feel free to share any and all information so your peers, colleagues can hear about all the good work you do.*

Quote:

*“If a tree falls in a forest and no one hears it, how do you know it actually fell??”*

**So, publicize your work, one never knows when it can pay off!**

**Editors:**

We are always looking for members interested in helping to edit the newsletter. The process is always more fun with more people to share the duties. Having more participants and contributors also helps us keep the newsletter interesting.

**Join the Team:**

If you feel you might like to join the team, or would like to train with us, please contact one of us at:

[wavelengths@ieee-sem.org](mailto:wavelengths@ieee-sem.org)

**Sharan Kalwani,**  
**Chair, IEEE SE Michigan Education Society Chapter**  
**Vice-Chair, IEEE SE Michigan Computer Society Chapter**  
**Co-Editor, Wavelengths,**  
**2018~2019~2020~2021~2022**

*Wavelengths Annual Publication Plan for Articles*

Month	AG's	Ch's	Ch's	SB's	Special Notice	Reporting Events	Monthly Focus	Awards
Jan		1		OU	New Year Officers	Officer's Welcome	The Year Ahead	
Feb	Cons	2		MSU	Science Fair Judges	National Engrs Wk.	Surviving Winter	
Mar		3	13	EMU	Elections - Prep			
Apr		4		U/M-D		ESD Gold Awards	Chapter Focus	
May	Life	5	14			Science Fair		
Jun		6					Leadership Skills	
Jul		7	15				Students Issues	
Aug	WIE	8			Nominations Call		Womens Issues	
Sep		9	16	LTU	Ballots	Engineers Day?	Professional Skills	
Oct		10		U/M-AA	Elections!	IEEE Day		
Nov	YP	11	17	WSU	Election Results	New Fellows		
Dec		12		U/D-M	IEEE-Com Apmts.		Happy Holidays	R4 Nom

*Wavelengths Annual Publication Plan for Personal Profiles*

Month	Profiles	Profiles	Committees
Jan	Chair	New Officers	ExCom
Feb	Treasurer		Communications
Mar	Secretary		Conference
Apr	Stud-Rep		Education
May	V-Chair		Executive
Jun	Sect-Adviser		Finance
Jul	Sr Officers		Membership
Aug			Nominations
Sep			PACE
Oct			Student Activiies
Nov			Technical Activiies
Dec	Editor-WL		



## Web & Social Sites

### SEM Website

<http://r4.ieee.org/sem/>

Each of the sites below may be accessed through the SEM Website:

### Section Website Event Calendar

(Select the “SEM Calendar” button - top row)

### SEM Facebook Page

(Select the “” button under the top row)

<https://www.facebook.com/groups/ieeesemich>

### SEM LinkedIn Page

(Select the “” button under the top row)

<https://www.linkedin.com/groups/1766687/>

### SEM Twitter Account (new)

(Select the “” button under the top row)

<https://www.twitter.com/ieeesemich>

### SEM Collabratec Workspace (new)

<https://iee-collabratec.ieee.org/app/workspaces/5979/IEEE-Southeastern-Michigan-Section/activities>

### SEM Officers:

For a complete listing of all - Section - Standing Committee - Affinity Group - Chapter and Student Branch Officers, see the SEM Officers Roster on the SEM web page under the “About SEM” button and select “Organization Roster”

### Section Officers

#### Section Chair

Sharan Kalwani

#### Section Vice-Chair

Mohammad Berri

#### Section Secretary

Bhupinder Mavi & Chris Johnson

#### Section Treasurer

Colleen Chmielewski

### Standing Committees:

#### Section Adviser

Don Bramlett

#### Wavelengths Editor

Sharan Kalwani

#### Chair Educational

Christopher Guirlanda

#### Chair Finance Committee

Sharan Kalwani

#### Chair Membership

Development

Mohamad Berri

#### Chair Nominations &

Appointments

Kimball Williams

#### Chair PACE

Sharan Kalwani

#### Chair Student Activities

Mel Chi

#### Student Communications

Coordinator

Michael Anthony

#### Student Representative

*Open!*

#### Chair Technical Activities

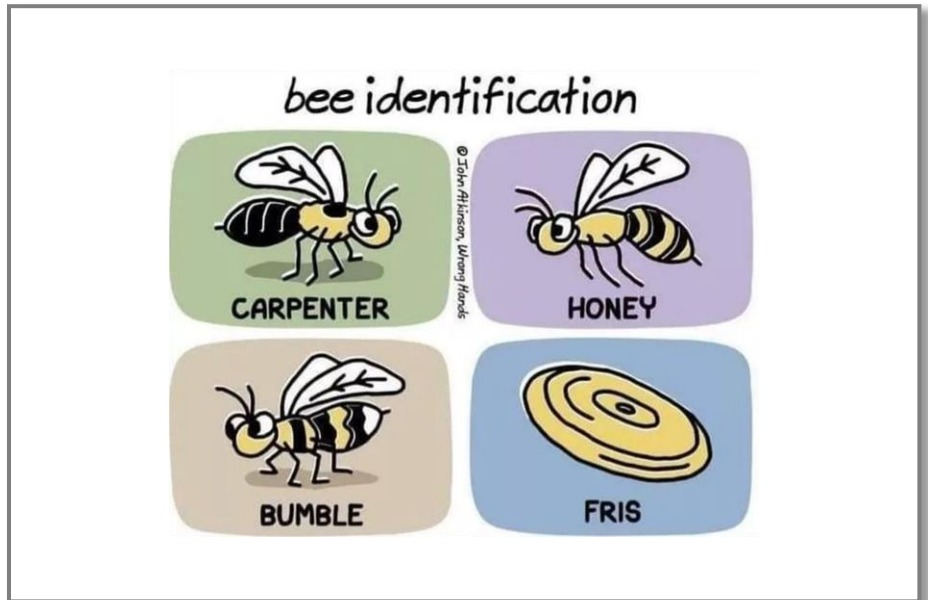
Jeffery Mosley





IEEE Southeastern Michigan

Visit Us on the Web at:  
<http://r4.ieee.org/sem>



### Advertising Rates

SEM Website & Newsletter

### Leadership Meetings

#### SEM Executive Committee Monthly Teleconferences:

- 1<sup>st</sup> Wednesday or Thursday of Each Month @ Noon
- Check the Section Web Calendar at:  
<http://r4.ieee.org/sem/sem-calendar/>  
(Select the “SEM Calendar” button in the top row.)

#### SEM Executive Committee Face-to-Face Meetings:

- Once every Qtr. Find the location, and Registration at:  
<http://bit.ly/sem-ieee>

#### SEM Standing Committee Meetings:

#### SEM Affinity Group Meetings:

#### SEM Technical Society/Chapter Meetings:

#### SEM University Student Branch Meetings:

- Meeting schedules are announced on SEM Calendar  
<http://r4.ieee.org/sem/>  
(Select the “SEM Calendar” button in the top row.)
- Registration for all at:  
<http://bit.ly/sem-upcoming>