



Wavelengths

Volume 55 - Issue 9
September 2015

Contents

Section Chair's Message	1
Student Activities	2
Nominations 2015:	3
Officer Appointments:	4
Membership Renewal:	4
LTU Seminar:	5
Consultants Workshop:	6
Fall Section Conference:	7
SEM Chapter 4:	8
Other Coming Events	10
Refer a Colleague:	11
Executive Committee	12
2015 Election & Terms	13
Section Mission & Goals	14
SEM Monthly Meetings	14
Editors Corner	15
Section Officers	16
Web & Social Sites	16
Leadership Meetings	17
Advertising Rates	17

Wavelengths Newsletter is produced by IEEE volunteers and published by Southeastern Michigan (SEM) Section for the members. Newsletter Archive: <http://sites.ieee.org/sem/>

Section Chair's Message



I met a group of fellows having breakfast on a Saturday morning the other day. Some were older and some were younger and I was curious what common interest brought them together. They were either retired or still employees of the same company. Obviously they all enjoyed working for this company and even if retired they were interested in what was going on.

The younger members of the group seemed to enjoy the war stories from the older fellows. There was a great deal of laughter. Notable was the desire to see each other face to face on Saturday mornings rather than just sending electronic communications. It was later in the day I began to compare this group to our IEEE SEM.

In many ways we are comparable. Our common interests bring us together. We encourage the younger men and women to be part of us. As older members we are interested in what the younger members have for ideas and interests.

A small difference is the younger members don't always want to hear our war stories. A larger difference is most of our communicating is electronic. We need to encourage coming together in face to face meetings at the Chapter and Affinity Group levels and at the Section Spring and Fall Conferences.

On to business;

Nominations are open for officer positions in our Section and in your Chapter and Affinity Groups. Please consider nominating yourself or someone you feel is qualified. Nominating another member requires their permission to do so. See details on page #3 of this newsletter.

Please remember, the positions of Section Chair and Section Vice-Chair are now two year terms for 2016 and 2017. The positions of Secretary and Treasurer are still one year terms for 2016. We will move to all officers being elected for two year terms when the Secretary and Treasurer are elected for 2017. (See details on page #13.)

Your current officers are planning, or should be planning, Chapter and Affinity Group meetings for this fall. A dedicated committee, headed by Basil Sherlund, is planning the Fall Conference. (See page #7)

Don't forget to check the calendar for upcoming meetings at www.ieee-sem.org and click the calendar tab. This can help you remain aware of what is happening and allows us to plan meetings that do not occur on top of other meeting that we want similar audience members to attend.

(Chair's Message – Continued)

I sync the SEM calendar to my personal calendar. If you are planning a meeting or event make sure it is shown on the calendar.

There are rewards, we all like rewards, for referring new members (see page #11).

I look forward to hearing from you and seeing you at our events. As always, your ideas and suggestions are encouraged and welcome.

Robert Neff
IEEE SEM Section Chair
RLNeff1@gmail.com

-30-

Student Activities



Nevrus Kaja is Chair of Student Activities at IEEE-Region 4- SEM, in addition he has also been the Chair of IEEE-University of Michigan Dearborn Student Branch as well as Co-Chair of 2015 Spring Conference.

As a very active member in IEEE, Nevrus is also a graduate student at University of Michigan Dearborn, where he also teaches a variety of classes and labs focused in embedded and control systems.

Nevrus is very active in his research activities. With recent grants from University of Michigan he currently conducts research in Cloud Computing Security and Robotic Sensors. He has published in domestically and internationally in peer-reviewed conferences as well as journals. During his college life Nevrus maintains an excellent academic record as shown by his achievements as well as honorary awards from multiple societies.

His success in professional life has been lined up very well with the motto of IEEE, advancing technology for humanity which he also holds it very valuable in his mission and continues to be committed to it. That is also his inspiration in volunteering activities.

Nevrus has been a member of IEEE since 2010. This is when he also moved to USA from his origin country, Albania. After transferring from Eastern Michigan University, Nevrus has been involved in many campus

organizations and research activities. Since he started at UM-Dearborn he has held many leadership positions such as President of ACC-Junior, Co-Founder and President of NAPEC Professional Club and official of Robotics Club, ect.

Currently he is the Chair of Student Activities where he has undertaken many projects to support and develop students as an integral part of our section.

An interesting fact for Nevrus is that he is now engaged and his proposal was in an IEEE Conference in front of many IEEE prestigious members. His fiancée is also part of IEEE and continues to volunteer with him.

His aspirations for the future include an active participation in IEEE Organization and a full time faculty at a research/teaching university in southeastern Michigan.

-30-

Nominations 2015:

The Nomination Site is now open:

[SEM-2015-Election-Nominations](#)

(Control + Click to follow the link.)

Nominations opened on August 3, and will close on September 21, 2015.

Each year we hold elections for the offices in our Section.

The elections include:

- Section Executive Committee (1)
- Affinity Groups (4)
- Chapters (17)

(Note:

Student Branches and HKN Branches hold their own elections at times selected by each.

Standing Committee officers are appointed by the Section Executive Committee and are not elected to their posts.)

The office positions to be elected are **Chair, Vice-Chair, Secretary and Treasurer.**

Terms:

This year our election for Section level officers are in transition between 1 to 2 year terms. A more detailed discussion may be found on page 12.

Job Descriptions:

Job Descriptions along with 'Quick Start Guides' for each position may be found in the **IEEE Center for Leadership Excellence** located at:

<https://ieee-elearning.org/CLE/>

Look in the "Volunteer Position Training" section for each office description.

Nominations:

The nomination process begins with the collection of candidates for each office, (Chair, Vice-Chair, Secretary and Treasurer).

To collect nominations for each office and Geo-unit in our Section, we use a vTools Survey. The nomination form is located at:

[SEM-2015-Election-Nominations](#)

Requirements:

IEEE requires that elected Section and Geo-unit officers meet the following criteria:

- active member status (i.e. dues paid),
- hold Graduate Student or higher membership status, namely, Member, Senior Member, Life Member or Fellow, and
- membership in the Geo-unit selected.

Note: All members residing in Southeastern Michigan are by default members of the IEEESEM Section and therefore may run for a Section Executive Committee office.

Candidates, for Affinity Groups or Chapters must be members of the corresponding Geo-unit.

If you are unsure of your particular Affinity Group or Chapter affiliation, please review the Officer Roster at:

http://sites.ieee.org/sem/files/2015/07/Officers_Roster_IEEE_SEM_7_14.2015.pdf

Each Geo-unit is listed along with its associated Affinity Group or Technical Society(s). Compare these to your current IEEE affiliations to determine the offices in the Geo-units you may seek using the candidate nomination process.

Self Nomination

When you begin the self-nomination process for a position, the information to have on hand to successfully complete the online nomination form includes:

- name as listed with IEEE,
- IEEE member number,
- e-mail address,
- phone number,
- member grade,
- Geo-unit and
- position.

Optional items:

You may also prepare the following optional items as part of the nomination package:

- biography or position statement (100 words or less) and
- photo (jpg 50kbytes or less).

Nominating someone else:

You may nominate someone. However, you must have their IEEE Member number and all the other relevant information required of any candidate. You must also identify yourself as the nominator.

(This is intended to prevent someone from being nominated for an office without their knowledge.)

Schedule:

The current schedule for nominations and elections this year is planned as follows:

- August 3 nominations open,
- September 21 nominations close,
- September 27 ballot ratification by the SEM Executive Committee *(completed electronically.)*,
- September 28 elections open,
- October 26 elections close and
- November 5 election ratification by the SEM Executive Committee,

The Nominations and Appointments Committee will present the final election results for review and final ratification at the November 5th Executive Committee teleconference meeting,

The final two steps in the nomination and election process are notifying each elected candidate and publishing the election results in the December issue of Wavelengths.

The facilities to begin collecting candidates are now open, and fully functional. We ask and invite all qualified Section members to consider placing their name 'in nomination' for an office(s) where they might be of greatest service to the Section during the coming year.

-30-

Officer Appointments:**Appointments:**

IEEESEM is a large and diverse section and experiences what is referred to as a 'churn' among our officer ranks.

'Churn' implies that IEEE SEM has an officer body that is in constant evolution and growth. The experience of serving as an officer tends to prepare an officer for greater work responsibilities. Consequently, they are requested to take on advanced job responsibilities which in turn results in moving into more demanding positions.

As a result of 'churn', offices may need to reduce their involvement in IEEE in order to address the additional challenges of their new position. IEEE is a volunteer organization and officers may also need focus on other life demands as they arise. In such situations, an officer may need to reduce involvement in IEEESEM and assist with finding and training a replacement.

One of the most productive training grounds for increased job responsibilities is that of an IEEE Secretary. Training is required in order to carry out the secretarial responsibilities.

Currently there are a number of secretarial positions open. One of the positions may be a good opportunity to improve your administrative and communications skills. Please consider the following opportunities:

Committee Secretary Positions:

- **Section Finance Committee**
- **Communications Committee**
- **Membership Committee**
- **Nominations Committee**
- **Professional Activities**

While the above section positions with section standing committees require a sincere interest and willingness to learn, the positions below require membership in the individual affinity group or technical society:

- **Women In Engineering**
- **Chapter 3 (Vehicle Technology)**
- **Chapter 10(Management)**
- **Chapter 12(Control Systems)**
- **Chapter 13(Education)**

Training:

Volunteering for a secretarial position may be your first experience serving on an IEEE committee. While previous experience is always an asset, if this is your first secretarial position, it may be helpful to review your skills and participate in training available from IEEE.

Several secretarial training modules have been posted on the IEEE SEM website. They are PowerPoint and Voice over Power Point (VoPPT) modules. The modules are located at: <http://sites.ieee.org/sem/about-sem/training/>

It is recommended, at a minimum, the following modules be reviewed:

- #32: [Secretary Controller of Operations](#), and
- #42: [Suggestions for Leading a Committee](#)

If you are interested in exploring one of these IEEE SEM positions, please contact:

Kimball Williams
k.williams@ieee.org
 313-355-4396

-30-

Membership Renewal:

The IEEE membership year is January through December. However, annual membership renewals are sent in September.

Members may find renewing in September a convenient way to avoid the end of the year rush to update records and memberships when they are involved in a number of professional organizations.

IEEE memberships should be renewed by December 31st. IEEE offers a short grace period at the beginning of the year before benefits and services are deactivated. Several notifications are sent before deactivating a membership.

Each member has an IEEE account that can be used to renew a membership. A username and/or password can be recovered from the login page in the event that either is forgotten. A new account should not be created because it will not link to your membership or renewal statement.

Check the following website if you have questions on the renewal process:

http://www.ieee.org/membership_services/membership/renew/renew_faq.html

-30-

LTU Seminar:



Friday Engineering Seminar

Sponsored by Eaton

Control of bipedal robot locomotion: theory and experiments

Jessy W. Grizzle, Ph.D.

Elmer G. Gilbert Distinguished University Professor
Jerry W. and Carol L. Levin Professor of Engineering
Electrical Engineering and Computer Science
University of Michigan, Ann Arbor

Friday, September 4, 2015

**12 PM-1 PM, Engineering Building, E211
Lawrence Technological University**

The fields of control and robotics are working hand-in-hand to development bipedal machines that can realize walking motions with the stability and agility of a human. Dynamic models for bipeds are hybrid nonlinear systems, meaning they contain both continuous and discrete elements, with switching events that are spatially driven by changes in ground contact. This talk will show how model-based feedback control and optimization methods are enhancing the ability to achieve highly dynamic locomotion in bipedal machines. The theory used in the talk will be amply illustrated with graphics and videos of our experiments to make the material accessible to a wide audience.

About the Presenter

Jessy W. Grizzle received the Ph.D. in electrical engineering from The University of Texas at Austin in 1983 and in 1984 held an NSF-NATO Postdoctoral Fellowship in Science in Paris, France. Since September 1987, he has been with The University of Michigan, Ann Arbor, where he is the Elmer G Gilbert Distinguished University Professor and the Jerry and Carol Levin Professor of Engineering. He jointly holds sixteen patents dealing with emissions reduction in passenger vehicles through improved control system design. Professor Grizzle is a Fellow of the IEEE and of IFAC. He received the Paper of the Year Award from the IEEE Vehicular Technology Society in 1993, the George S. Axelby Award in 2002, the Control Systems Technology Award in 2003, the Bode Lecture Prize in 2012, and the IEEE Transactions on Control Systems Technology (TCST) Outstanding Paper Award in 2014. His work on bipedal locomotion has been the object of numerous plenary lectures and has been featured in The Economist, Wired Magazine, Discover Magazine, Scientific American, Popular Mechanics and several television programs.

Lawrence Technological University

Founded in 1932 on the site where Henry Ford perfected the moving assembly line, Lawrence Technological University offers over 100 undergraduate, master's, and doctoral programs in Colleges of Architecture and Design, Arts and Sciences, Engineering, and Management. With a focus on leadership through theory and practice, LTU seeks to help students understand not only why something should work, but also how it works in real-life situations. Consequently, many of the University's programs encourage students to participate in professional projects in which they solve real problems facing practicing architects, engineers, managers, and scientists. Through co-op, part-time work, internships, student projects, and participation in professional organizations, students network with leaders in their chosen fields.

LTU alumni command salaries that rank in the highest 100 of all U.S. universities, and the Brookings Institution ranks LTU fifth in the country for providing the most value-added in preparing its graduates for well-paying occupations.

-30-

Consultants Workshop:

The 2nd Annual Consultant Workshop

IEEE Southeastern Michigan Consultants' Affinity Group: The Consultant Workshop

Date:

03 October 2015

\$20 IEEE Members; \$25 Non-Members

Time:

8:30 AM to 4:00 PM

Location:

Lawrence
Technological
University
Southfield, MI 48126
Room: UTLC T429

Agenda

8:30 – 9:00	Check In, Coffee & Muffins
9:00 – 9:10	Welcome Remarks
9:10 – 12:00	Morning Presentations
12:00 – 1:10	Lunch (not included) and Networking
1:10 – 3:00	Afternoon Presentations
3:00 – 4:00	Panel Discussion

Speakers / Presentation Titles

Bob Krause, IEEE-USA Alliance of IEEE Consultants' Networks Coordinating Committee

"How to Stimulate and Hone your Networking Skills"

Larry Nelson, IEEE-USA Alliance of IEEE Consultants' Networks Coordinating Committee

Gary Blank, IEEE-USA Past President

"How to Find Clients Using Networking and the Internet"

William R. Kassebaum P.E., IEEE-USA Alliance of IEEE Consultants' Networks Coordinating Committee

"Start-up Tactics"

Space is limited

To reserve your seat,
please register at

<https://meetings.vtools.ieee.org/m/34035>

Fall Section Conference:

Autonomous Vehicles, Their Legacy and Future

Date: November 17, 2015

Location:

U of M Dearborn – Fairlane Conference Center
(North Building)

Keynote Speaker:

Bob Neff – SEM Section Chair

Topic:

“Autonomous Vehicles, Their Legacy and Future”



What will our life be like with autonomous vehicles?

Will it be the anticipated utopia or will there are new concerns that have to be considered?

Autonomous vehicles are not a new idea. In 1925, the Houdina Radio Control Company demonstrated a driverless radio controlled called the "Linrrikan Wonder" at New York City. The General Motors Futurama Exhibit at the 1939 World's Fair depicted radio-controlled electric cars that were propelled with electromagnetic fields embedded in the roadway. Interest and research has continued thorough out the years up to the present time. Only since the 1990s has the development focus shifted to autonomous vehicles that have to operate in the current traffic patterns.

The presentation provides a brief history of Automated Vehicles and Highways and highlights the National Automated Highway Demonstration in 1997. Many automated features have evolved since the demonstration driven by many forces as shown in this presentation. The presentation will discuss the challenges facing the usage of these features including adoption and education, and show how vehicle to vehicle communication can facilitate the future of autonomous vehicles. Finally, the presentation will offer a vision of what life will be like with autonomous vehicles. The registration website is https://meetings.vtools.ieee.org/meeting_registration/register/34367

IEEESEM Fall Conference

The **Fall Conference Chair is Basil Sherlund** who has 40 years of experience in Computer Design and Information Technology. As a professional he received a BS in Electrical Engineering, with honors, and a MS in Computer Science. He is a life member of Eta Kappa Nu, the electrical engineering honor society.

Basil is a former member of the executive board of the IEEE Software Engineering Standards Committee, the Technical Committee on Software Engineering and has held two offices and three chapter positions in IEEE Region 4 and SEM; he is also a member of the Region 4 Educational Activities Committee. The conference committee, in support of Basil and the 2015 Fall Section Conference, also need volunteers to help this event achieve its full potential as an educational and networking opportunity for all our section members. Anyone who wishes to help out with the planning and preparation for the conference is encouraged to contact Basil and discuss positions on the planning Gantt Chart that he will be filling in the next few weeks.

If your interest is to be of help at the actual event, you are encouraged to contact Basil (bsherlund@ieee.org) and let him know that you wish to assist on the day of the conference. **-30-**

SEM Chapter 4:

The IEEE **Chapter 4** in Southeastern Michigan represents four IEEE societies:

**Antennas and Propagation,
Electron Devices,
Microwave Theory and Techniques, and
Photonics**

The aim of Chapter 4 is to provide a technical home to its members, where members can enhance their careers through networking and learning about the latest technical trends from chapter hosted lectures and sponsored workshops. Chapter 4 is one of the very active chapters in the IEEE Southeastern Michigan Section, with large member participation and dedicated officers. The chapter recently was awarded the Outstanding Chapter Award from the MTT society, which was presented at the 2015 IEEE International Microwave Symposium.

The 2015 IEEE Chapter 4 Officers are:

Lora Schulwitz,	Chair
Line Van Nieuwstadt,	Vice Chair of Technical Activities (MTT-S)
Anthony Grbic,	Vice Chair of Technical Activities (AP-S)
Becky Peterson,	Vice Chair of Technical Activities (EDS)
Somin Lee,	Vice Chair of Technical Activities (PHOS)
Michael Wu,	Vice Chair, Local Arrangements
Brian Tierney,	Secretary
Yang Liu,	Treasurer

Chapter Events:

The chapter regularly hosts events for its local IEEE members at the University of Michigan North Campus. The events typically begin at about 5 p.m. with networking followed by a technical presentation. The speakers are often IEEE distinguished lecturers belonging to one of the societies represented by Chapter 4, local technical experts, or visiting faculty. The attendees consists of university faculty, industry professionals and students.

Several examples of recent Chapter 4 events are listed below:

Spring 2015 Technical Meetings:

Patrick Fay, Professor, Department of Electrical Engineering at the University of Notre Dame, Notre Dame, Indiana and IEEE EDS Distinguished Lecturer, "Advances in III-V Heterostructure Devices and Integration for Millimeter-Wave and THz Sensing and Imaging." April 8, 2015

Michael Wu, Assistant Professor of Electrical Engineering at Wayne State University, Detroit, MI, "Active Integrated Metamaterial-Based Antennas and Microwave Components." April 28, 2015

Masataka Higashiwaki, Director for Green ICT Device Advanced Development Center at the National Institute of Information and Communications Technology, "Gallium Oxide Devices for the Next Revolution in Power Electronics." June 18, 2015

Continued on next page:

Ch4 Continued:

Summer 2015 Technical Meetings:

Oscar Quevedo-Teruel, Assistant Professor in the School of Electrical Engineering (EES)/Electromagnetic Engineering (ETK) at the KTH Royal Institute of Technology, "Transformation Optics and its Application to Antennas," July 2, 2015

Guido Valerio, Associate Professor in the Electronics and Electromagnetism Laboratory at Sorbonne Universités, Université Pierre et Marie Curie, in Paris, France, "Analytical and Numerical Techniques for Artificial Structures Embedded in Multilayered Media," July 9, 2015

Mauro Ettore, Research Scientist at the French National Center for Scientific Research (CNRS) in Rennes, France, "Non-Diffractive Radiation and Near-Field Focusing Techniques", July 16, 2015

Workshops:

In addition, the chapter organizes workshops approximately every two years. The last workshop was held in May 2013, which was a Microwave Design Seminar lead by Dr. Eisenhart, past IEEE MTT president, a leading expert in microwave design and former Hughes Aircraft Chief Scientist. The event featured the thoughts, tips and techniques for microwave circuit design, including information on using commercially available electromagnetic software to simulate microwave designs.



Photograph of the Chapter 4 Microwave Design Seminar

In November 2015, Chapter 4 will be hosting the Year of Light workshop, which celebrates the 150 years of Maxwell's equations. The event will take place during a Friday afternoon at the University of Michigan, and will host distinguished lecturers on Maxwell's equations and the history of Maxwell, a panel session on potential career opportunities, hands on demonstrations, and a poster session. Additional details about the event will be announced soon.

Join us:

If you are interested in becoming involved with Chapter 4, or would like to be added to the email list for announcements of future events, please contact the Chapter 4 Chair, Lora Schulwitz, at schulwitz@ieee.org

Other Coming Events

We try to publish IEEE events in several places to ensure that everyone who may want to attend has all the available relevant information.

SEM Web Calendar:

<http://sites.ieee.org/sem/>

Select "SEM Calendar" button in the top row of the website.

SEM Web Meetings:

<http://sites.ieee.org/sem/>

Select "SEM Meeting List" button in the left-hand column.

vTools Meetings:

<http://sites.ieee.org/vtools/>

Select "Schedule a Meeting" button in the left-hand column of buttons.

Other Happenings

However, since IEEE members tend to have eclectic interests, we want to give everyone a heads up for some of the non-IEEE events that may be of interest.

Let us know if you have a special interest in a field that encourages technical study and learning, and wish to share opportunities for participation with members of the section.

Send the particulars to k.williams@ieee.org and h.s.hill@ieee.org

An announcement may be placed in the newsletter.

Below are links to local SEM Clubs engaged in technical hobbies as well as links to sites that may be useful for locating clubs in the area.

Amateur Radio Clubs in Southeastern t Michigan

(This is a fairly comprehensive listing of all the 'Ham' clubs in SEM.)

<http://www.wa2hom.org/ham-radio-clubs-in-se-michigan/>

Model RC Aircraft

<http://www.skymasters.org/>

Model Rocketry

<http://team1.org/>

Astronomy

<http://www.go-astronomy.com/astro-clubs-state.php?State=MI>

Experimental Aircraft Association

<https://www.eaa.org/en/ea/ea-chapters/find-an-eea-chapter>

Robots

<http://therobotgarage.com/about-us.aspx>

Science Fiction Conventions

ConClave October 9-11, 2015, Dearborn, MI

<http://www.conclavesf.net/>

Mad Science

<http://www.madscience.org/>

ESD PE Review Class

www.esd.org

-30-

Links:

Refer a Colleague:

Refer a Colleague, Get Great Merchandise

In conjunction with IEEE-USA, we are pleased to continue this special offer for US members.

[Refer a colleague to join IEEE](#). They'll get a US\$25 discount off their first year membership, and you'll get a gift. But this discount expires on 28 February - submit your referrals now!

IEEE-USA gift items you can choose from include:

- Cooler backpack
- Computer backpack
- Portable battery charger
- Tablet case
- Portable speaker
- Parker pen and mechanical pencil set
- Parker ballpoint pen
- Travel coffee mug and tumbler set
- Golf balls
- Baseball hat
- Golf umbrella
- Travel umbrella

You will also be eligible to receive incentives through the IEEE Member-Get-a-Member (MGM) program.

How it works:

- Refer your colleague via the [online form](#).
- Your referral will receive an e-mail inviting them to join at a US\$25 discount off their first-year membership dues.
- This discount expires on 28 February.
- Your referral will provide your IEEE member number as they join.
- Within 1-3 weeks after your referral joins, you will receive an e-mail confirming your recruiting success, including a link to select your IEEE-USA merchandise item.
- You will receive a separate e-mail for each new member you recruit.

Please help spread the word and share your IEEE experience - no one knows how beneficial IEEE Membership is for technical and career development better than you, the member. [Refer your friends and colleagues today!](#)

Sincerely,

Elyn Perez

IEEE Member & Geographic Activities

Important to know: There is no limit to the number of merchandise items you can earn; as long as your referrals join as professional members. Student members and Society Affiliates are not eligible for this promotion. You also remain eligible for the [MGM incentive awards](#) given out once per year in September.

IEEE • 445 Hoes Lane, Piscataway, NJ 08854 USA

Executive Committee

The SEM Executive Committee is the primary coordination unit for Southeastern Michigan (SEM) IEEE operations. The basic organization chart below shows the 2015 arrangement of communications links designed to provide inter-unit coordination and collaboration.

The SEM Executive Committee meets in a teleconference each month on either the first Wednesday or first Thursday at noon. The specific meeting days, times, phone or WebEx numbers and log in codes are published on the IEEE SEM Website calendar: <http://sites.ieee.org/sem/> Click on the "Calendar" button in the top banner on the first page of the web site.

If you wish to attend, or just monitor the discussions, please contact David Mindham, the section secretary at: dmindham@ieee.org and request to be placed on the distribution list for a monthly copy of the agenda and minutes.

More meeting details are available on the next page of this newsletter.

Other Meetings:

Most of our members maintain memberships in one or more of the IEEE technical societies, which automatically makes them members of the local chapter which is affiliated with that society. As a result, they should receive notices of the local chapter meetings each month.

However, members of the section may have multiple technical interests and would like to have meeting information of

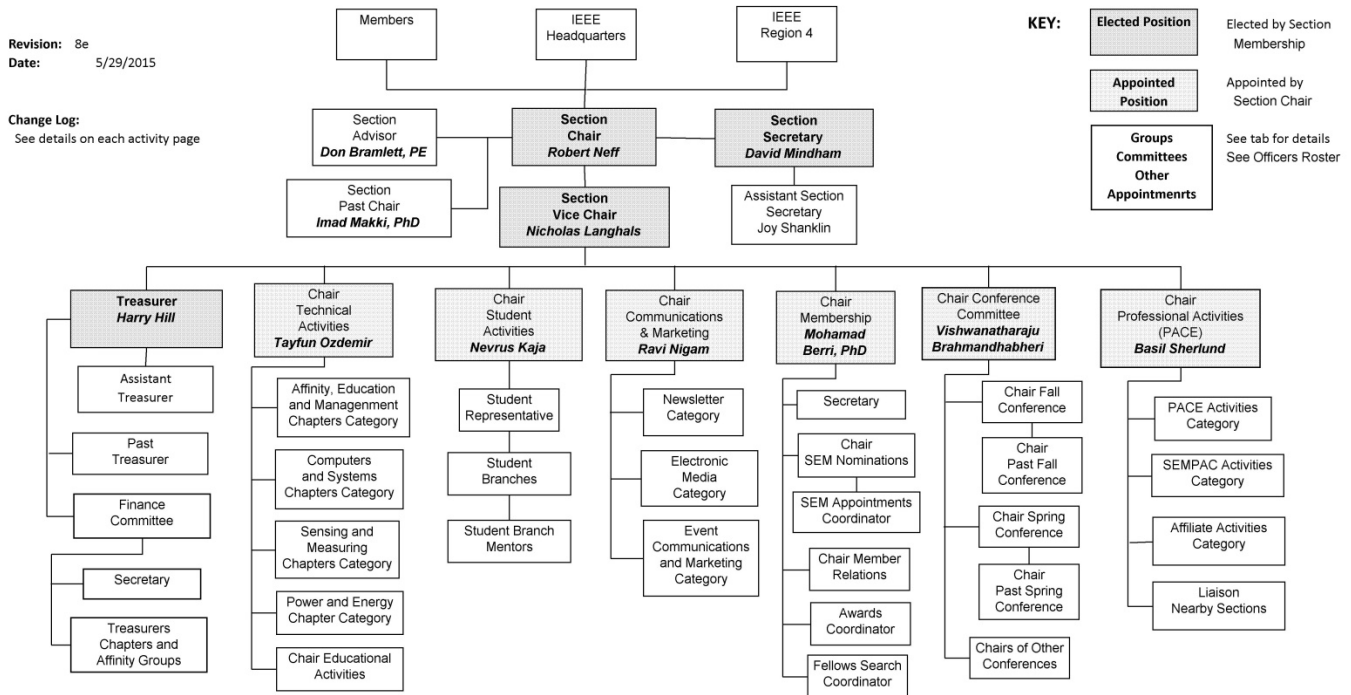
other chapters. In order to communicate the meeting dates of all the chapters, affinity groups etc., to our members to facilitate their attendance, leaders of the groups are requested to send meeting information to our webmasters for posting on section's calendar.

More detailed information on meetings may be found by using the IEEE meetings site. This may be found through the IEEE SEM Website: <http://sites.ieee.org/sem/> and clicking on the **SEM meetings list** button near the bottom of the left hand banner.

Automatic e-mail notification of web updates may be received using the "Email Notifications" button at the top of the **SEM Tools/Links** side banner.

David Mindham - SEM Secretary

Current Organization - IEEE Southeastern Michigan Section (SEM)



Download the complete SEM Organization Chart, in PDF format, from the SEM Website at: www.ieee-sem.com Then, click on "About SEM" Tab, followed by, click on "Current Officers"

2015 Election & Terms

2015 will be a 'transition' year for Section Executive Committee officers.

Please see the chart below:

IEEE SEM Officer Term					
Governance Level	Chair	Vice-Chair	Secretary	Treasurer	
Section Executive Committee	2	2	1	1	Note:
Chapter	1	1	1	1	
Affinity group	1	1	1	1	
Student Branch	1	1	1	1	
HLN Branch	1	1	1	1	
Standing Committee (Appointed)	2	2	2	n/a	

Note: SEM ExCom Officer Term Transition Plan:

2016: Chair & V-Chair serve 2 year terms:

2017: Secretary & Treasurer serve 2 year terms:

2018 forward: Even years elect Chair & V-Chair,

2018 forward: Odd years elect Sec. & Treas.

Term Limits: MGA guidelines suggest that all elected officers serve a maximum of 6 years without a 'break' in their service in any one position.

"All officers shall not serve in any one position, in any single organizational unit, more than six years in total."

Note that 'staggering' the terms of officers is done to provide an 'overlap' period so that newly elected officers will serve with continuing officers that will have a "corporate memory" and help the newly elected 'climb the learning curve'.

However, if SEM Geo-units believe staggering terms would be advantageous to their operation as well, discussion among your officers and members should be considered and a proposal or motion may be brought before the SEM Executive Committee at a regular meeting for discussion and potential action.

It should be understood that this revision to officer terms currently applies to the SEM Executive Committee only. All other Geo-units remain with their current 1 year officer terms.

Section Mission & Goals**Section Focus:**

The IEEE SEM Section Officers have reaffirmed the Mission and Goals of the section with the guidance of the Region 4 leadership. The Mission and Goals conform with those of IEEE worldwide.

You have probably seen the Mission and Goals before. However, it is important to keep these clearly in mind and remind ourselves often that this is what we are about and what we are trying to accomplish.

Section Mission

Inspire – Enable – Empower and Engage Members of IEEE at the local level.

For the purpose of:

- Fulfilling the mission of IEEE (... **foster technological innovation and excellence for the benefit of humanity.**),
- Enhancing the members' growth and development throughout their life cycle, and
- Providing a professional home,

Section Goals

- Increase member engagement,
- Improve relationships with and among members,
- Increase operational efficiency and effectiveness, within the section and its interfaces,
- Enhance collaboration – serve as the local face of IEEE to the community,
- Increase membership, and
- Ensure the collection of appropriate information necessary to assist the IEEE to become a data driven organization.

It is now the task of the section leadership to guide and coach all section officers and elements to focus their activities on achieving those goals.

SEM Monthly Meetings**Scheduled Meetings:**

The regular meetings of the SEM Leadership (Executive Committee) are scheduled well in advance to allow everyone to place them in their personal planning calendars, and then defend those dates against encroachment. (*Not always possible.*)

Two types of Monthly meetings are normally scheduled:

Monthly Teleconference / WebEx as well as:

Quarterly Face-to-Face (F2F). See schedule below.

Note: All IEEE meetings are 'Open' for all members to attend.

The only caveat is that you please register using the specific meeting form on the vTools site at:

<https://meetings.vtools.ieee.org/main>

Registering will ensure there is sufficient space, refreshments and support for attendees.

Teleconference Schedule

(held from 12-1 p.m.):

- September 3, 2015
- November 5, 2015
- December 2, 2015

F2F Meeting Schedule:

- October 7, 2015
- January 7, 2016

More information for F2F meetings will be emailed in a timely manner before the meeting dates.

Consider checking for additional information as the meeting dates approach at the SEM website (<http://sites.ieee.org/sem/>). The links to the SEM Facebook or LinkedIn pages on the SEM website may also be checked for updates.

All the normally scheduled meetings of each of the other section chapters, affinity groups etc. are listed each month in the vTools area of our SEM website at:

http://ewh.ieee.org/r4/se_michigan/calendar1.php

The information is for: **Standing Committee Meetings**
Affinity Group Meetings
Technical Chapter Meetings
University Student Branch Meetings

Calendar Schedule:

Meetings are also announced on the SEM Calendar web page

<http://sites.ieee.org/sem/>

(Select the "SEM Calendar" button in the top row.)

Note: Often meetings of the Executive Committees of Chapters and Affinity Groups (and standing committees, of course) are listed only in the SEM Calendar page, since it is felt that most members would not wish to sit through administrative meetings.

However, if this type of meeting is just your 'cup of tea', then contact the officers of the unit that is conducting the meeting, and ask to be 'linked' into their teleconference, SKYPE, Google Hangout, or WebEx meeting. They will be happy to have you as a participant.

Many volunteers become interested in section activities when they get a chance to attend a monthly meeting and 'peek under the hood' to find out how the machinery of the section actually runs. It can be a rewarding experience.

David Mindham

SEM Section Secretary.

dmindham@ieee.org

-30-

Editors Corner

Previous editions in this series may be found on the IEEE SEM website at: <http://sites.ieee.org/sem/>. Click on the "Wavelengths" button in the top row of selections.

Comments and suggestions may be sent to the editor at k.williams@ieee.org. We also recommend a cc to the chair of the Communications and Marketing Committee, Chaitanya Setti at: chaitanyagini@ieee.org.

The newsletter does not have a staff of reporters to 'investigate' what is going on in the section and write up informative articles.

We rely on our officers and members to provide the 'copy' that we finally present to readers of the newsletter.

The **Wavelengths Focus Plan and Personal Profiles** plan shown in the matrix below is presented to ensure coverage of section activities and events.

We try to complete the newsletter layout a week before the first of the month to allow time for review and corrections. If you have an article or notice, please submit it two weeks before the first of the month or earlier if possible.

The plan below relies on the contributions of our members and officers, so please do not be shy. If you have something that should be shared with the rest of the section, we want to give you that opportunity.

Co-Editors:

Harry Hill and I co-edit the monthly Wavelengths newsletter. However, we are always looking for members interested in helping to edit the newsletter. The process is always more fun with more members to share the duties, and help keep the newsletter alive and lively by providing alternative points of view.

If you feel you might join the team, or would like to train with us, please let us know.

h.s.hill@ieee.org

k.williams@ieee.org

-30-

Wavelengths Annual Publication Plan for Articles

Month	AG's	Ch's	Ch's	SB's	Special Notice	Reporting Events	Monthly Focus	Awards
Jan		1		OU	Future Cities Judges	Election Results	Resolutions	
Feb	Cons	2		MSU	Science Fair Judges	Officer's Welcome	Surviving Winter	Future Cities
Mar		3	13	EMU	Spring Conf. Flyer	Spring Conference	Spring Conference	Science Fair
Apr		4		U/M-D	National Engrs Wk.	Future Cities	Chapter Focus	GOLD Award
May	Life	5	14		Outstanding Eng Awd	Science Fair	Elections - Prep	New Fellows
Jun		6			IEEE-USA Apmts.	ESD Banquett	Leadership Skills	SEM Awards
Jul		7	15		Nominations Call	MD-Webcasts	Students Issues	Region 4
Aug	WIE	8			MGA - Apmts.	Tech-Webinars	Womens Issues	
Sep		9	16	LTU	Region 4 Apmts.	Engineers Day	Professional Skills	
Oct		10		U/M-AA	Fall Conf. Flyer		Fall Conference	
Nov	YP	11	17	WSU	ELECTIONS!		Humanitarian	
Dec		12		U/D-M	IEEE-Com Apmts.	Fall Conference	Happy Holidays	

Wavelengths Annual Publication Plan for Personal Profiles

Month	Profiles	Profiles	Committees
Jan	Chair	New Officers	
Feb	V-Chair	Secretary	Communications
Mar	Treasurer	Sect-Adviser	Conference
Apr	Stud-Rep		Education
May		Sr Officers	Executive
Jun			Finance
Jul			Membership
Aug			Nominations
Sep			PACE Activities
Oct			Student Activities
Nov			Technical Activities
Dec		Editor-WL	



-30-

Web & Social Sites

SEM Website

<http://sites.ieee.org/sem/>

Each of the sites below may be accessed through the SEM Website:

Section Website Event Calendar

(Select the “SEM Calendar” button - top row.)

SEM Facebook Page

(Select the “” button under the top row.)

SEM LinkedIn Page

(Select the “” button under the top row.)

SEM Officers:

For a complete listing of all - Section - Standing Committee - Affinity Group - Chapter and Student Branch Officers, see the SEM Officers Roster on the SEM web page under the “About SEM” button and select “Current Officers”.

SEM On Line Community

<http://sem.oc.ieee.org>

-30-

Section Officers

Section Chair
Robert Neff

Section Secretary
David Mindham

Section Vice-Chair
Nicholas Langhals

Section Treasurer
Harry Hill

Standing Committees:

Section Adviser
Don Bramlett

Chair Communications & Marketing
Ravi Nigam

Chair Conferences
Raju Brahmmandhabheri

Chair Educational Activities
Chaomin Luo

Chair Finance
Basil Sherlund

Chair Membership
Mohamad Berri

Chair Nominations
Kimball Williams

Chair Professional Activities
Basil Sherlund

Chair Student Activities
Nevrus Kaja

Student Representative
Samer Koda

Chair Technical Activities
Ali Eydgahi

Past Section Chair
Imad Makki



IEEE Southeastern Michigan

Visit Us on the Web at:
<http://sites.ieee.org/sem>

Leadership Meetings

All IEEE members are welcome to join us at any regularly scheduled meeting:

Advertising Rates

SEM Website & Newsletter
Advertising Rates / Month:

Our readers specify & purchase a wide range of electronic components, equipment and services.

Our sponsors come from industry, education, and nonprofit organizations.

Full page \$500,

Half page \$250

Quarter page \$125,

Eighth page \$65.

SEM Executive Committee Monthly Teleconferences:

- 1st Wednesday or Thursday of Each Month @ Noon
- Check the Section Web Calendar at:
<http://sites.ieee.org/sem/>
 (Select the "SEM Calendar" button in the top row.)

SEM Executive Committee Face-to-Face Meetings:

- 1/Qtr. Usually held at U/M-D Fairlane Center
- Registration at:
<https://meetings.vtools.ieee.org/main>

SEM Standing Committee Meetings:

SEM Affinity Group Meetings:

SEM Technical Chapter Meetings:

SEM University Student Branch Meetings:

- Meeting schedules are announced on SEM Web Calendar
<http://sites.ieee.org/sem/>
 (Select the "SEM Calendar" button in the top row.)
- Registration for all at:
<https://meetings.vtools.ieee.org/main>

-30-