



Wavelengths

Volume 55 - Issue 4
April 2015

Contents

Section Chair's Message	1
Leadership Skills	3
EMC Fest 2015	4
Detroit Science Fair:	5
Windsor Section Activity:	8
ESD Gold Awards:	9
Around the Section:	11
Section Conference Plans:	12
Other' Coming Events	14
Michigan Robotics Day:	15
Refer a Colleague:	16
Executive Committee	17
Section Mission & Goals	18
SEM Monthly Meetings	18
Editors Corner	19
Section Officers	20
Web & Social Sites	20
Leadership Meetings	21
Advertising Rates	21

Wavelengths Newsletter is produced by IEEE volunteers and published by Southeastern Michigan (SEM) Section for the members.
Newsletter Archive: <http://sites.ieee.org/sem/>

Section Chair's Message

I received several responses to last month's Chair's letter talking about "How Do I Volunteer?"

From the sounds of these comments, we should make it a lot easier to get involved. I request that all Section, Chapter and Affinity Group Officers and Committee Chairs make responding to such inquiries a high priority. Our future leaders are among this group of people that have taken the initiative to make contact and ask questions.

An entertaining, educational and enjoyable Spring Conference has been planned. You are encouraged to register as soon as possible to make the planning process easier. More information is on page # 2. The conference web site is www.ieee-sem.org/spring.

Recent appointments:

Harry Hill is our new Treasurer. Harry has served as our Assistant Treasurer until now. Praveen Kumar, our past Treasurer, is relocating out of Section at his employer's request. He has done a wonderful job as our Treasurer for several years and we appreciate his efforts and continued support during the transition, which opens the Assistant Treasurer's position. If you are interested please let Harry know.

Tafun Ozdemir, Former Chapter 4, Chair, has accepted an appointment as Chair of Technical Activities. In this role he will coordinate and facilitate the various Technical activities of our Chapters and Affinity Groups.



Ali Eydgahi, has agreed to take on the role of Nearby Section Liaison. In this role Ali will serve communicate with our neighbor Sections in N.E. Michigan, West Michigan, Toledo and Windsor. Ali will also be responsible for making these neighbors aware of activities and events in our section.

For a better understanding of the organization please visit our updated Organization Chart at the SEM web Site under the "About SEM" tab, and find their contact information in the Officers Roster at: www.ieee-sem.org

Additionally, we have launched Virtual Officers Training to better serve our Section officers. In the past we ran weekend training sessions that not all officers could attend. The virtual format enables us to reach all of our officers.

I look forward to hearing from you and seeing you at our events. As always, your ideas and suggestions are encouraged and welcome.

Robert Neff
IEEE SEM Section Chair
RLNeff1@gmail.com



SPRING CONFERENCE

Tuesday Evening, April 28, 2015

**University of Michigan - Dearborn
Fairlane Center – North Building**

19000 Hubbard Drive, Dearborn, Michigan 48126

Meeting Agenda:

- 4:00 PM – 5:15 PM Registration
Display Tables / Student Posters / Networking
- 5:15 PM – 5:30 PM Conference Overview / Recognitions
- 5:30 PM – 6:00 PM Panel Discussion
- 6:00 PM – 7:00 PM Breakout Technical Sessions (2 Speakers per session)
- 7:00 PM – 7:45 PM Dinner
- 7:45 PM – 8:45 PM Keynote Speech
- 8:45 PM – 9:00 PM Awards and Recognition



**Keynote Presentation:
Evolving State of Technology:
Trends and Effect on Higher Education**

Dr. A. W. (Tony) England

Dean, College of Engineering and Computer Science
University of Michigan - Dearborn

**Special Panel Discussion: You and Your Research
Panel Moderator: Dr. Harpreet Singh**



Conference Website: www.ieee-sem.org/spring

Leadership Skills

LEADERSHIP SKILLS WORKSHOP

Saturday, April 11, 2015 9:00 AM – 3:30 PM

Sterling Inn

34911 Van Dyke Avenue, Sterling Heights, MI 48312

Telephone: (586) 979-1400

Workshop Overview

Leadership is an important engineering tool, and learning to be an effective leader in various environments helps to guarantee your personal and professional success as an engineer. Leadership skills will definitely be part of your career when you are a leader or when you work with others who are leaders.

Leaders have vision and the ability to inspire others to accomplish great things. There are two reasons you will benefit by understanding the principles of leadership. First, you can apply these to leadership opportunities and achieve greater success. And second, you can work more effectively with leaders when you are part of their team. When you learn to be a leader and to work with other leaders you achieve greater success in your career and life.

The Leadership Skills workshop is intended to help participants develop and improve interpersonal, group, team and leadership skills. The workshop is targeted to those in management or leadership roles in business, industry, academia or volunteer organizations. However, anyone interested in further developing these skills in dealing with people and working within any type of organization will benefit from the workshop. The format for the workshop includes the presentation of the core material and interactive participation; using exercises, case studies and open discussion.

Workshop Content

- Leadership
- Interpersonal communications
- Conflict Management
- Problem Solving and Decision Making



DON C. BRAMLETT, PE, SMIEEE, FESD, FMSPE

Don Bramlett received his BSEE and MBA from the University of Detroit. He is a registered Professional Engineer. Don has spent his entire 40 year professional engineering career in the energy industry, 6 years in the natural gas industry, and then 34 years in the power generation segment of the electric utility industry. He is a Senior Project Engineer in Fossil Generation with the DTE Electric Company, a major subsidiary of DTE Energy, where he has overall responsibility for large capital projects at various power plants. Don has presented extensively at IEEE USA conferences and the IEEE Section Congress. Don has conducted many training workshops on leadership and professional skills for the IEEE Southeast Michigan section.

Registration

Register at the Workshop web site <https://meetings.vtools.ieee.org/m/31697>

IEEE Members	\$10
Non Members	\$15
Students.....	FREE

Workshop Website: <https://meetings.vtools.ieee.org/m/31697>

EMC Fest 2015

The Southeastern Michigan EMC Chapter (8)

Proudly Presents:

EMCFest '2015

“The Grounds for Grounding”

A Tutorial and Exhibition
With Honored Guest Speaker

Elya Joffe
EMC Society Past President

Thursday, May 7, 2015

At

Embassy Suites

19525 Victor Parkway, Livonia, MI 48152

734-462-6000

IEEE Electromagnetic Compatibility (EMC) Society.

EMCFest'2014 Home Page:

<http://www.emcfest.org>

Register On-Line!



Mr. Joffe has been employed since 1987 by K.T.M. Project Engineering which is located in Israel He is V.P. of Engineering and a Senior EMC Engineering Specialist and Consultant. He holds a BScEE in Electrical Engineering from the Ben Gurion University in Israel. Additionally, Elya is a Registered Professional Engineer; iNARTE certified Senior EMC Engineer, ESD Control Engineer; EMC Master Design Engineer; Chair of the Exemplar Global BoD;

Immediate Past Chairman of the iNARTE Advisory Committee; and author of "Grounds for Grounding: A Circuit to System Handbook", published by John E. Wiley & Sons, 2009.

Mr. Joffe is Senior Member of IEEE; Past President of the EMC Society; Immediate Past President of the IEEE Product Safety Engineering Society; Past Chairman of the Israel IEEE EMC Chapter; and Member of the Board of Governors and VP for Conferences of the Society for Social Implications of Technology (SSIT).

Program Outline - Thursday May 7, 2015

7:30	REGISTRATION, EXHIBITS & CONTINENTAL BREAKFAST
8:30	Fundamental Concepts: Paths of Current Return, Parasitic Paths, Grounds for Grounding and Why Grounding.
10:00	Break & Exhibits
10:30	Fundamental Grounding Schemes and The "Grounding Tree"
12:00	LUNCH
1:00	Ground Loops and their Mitigation (Who's afraid of the big bad (Ground) loops?): Power Distribution vs. Grounding Schemes Interrelationships
2:30	Break 7 Exhibits
3:00	Equipment and System Grounding Schemes: Cable Signals and Shields' Grounding, Grounding-Related Case Studies, Summary and Wrap Up
4:30	Ice Cream Reception
5:00	Close of EMCFest

FEE SCHEDULE

Before April 24 2015

IEEE Members,	\$40
Non IEEE Members,	\$50
Students W/Student I.D.	\$25
Unemployed IEEE Members	\$25
Retired IEEE Members	\$25
CEU Certificate Only	\$25
All after April 24th	\$100

For more details, and to register on-line, please visit the website at:

www.emcfest.org

Detroit Science Fair:

The 58th Annual Science and Engineering Fair of Metropolitan Detroit (SEFMD) was held from March 10 through March 14, 2015 in the Michigan Hall of the Cobo Conference Exhibition Center in downtown Detroit.

Judging of student projects was performed on Wednesday, March 11. This year the SEFMD had over 130 schools participate from Wayne, Oakland and Macomb counties with approximately 1,300 students having projects on display in two Divisions, the Junior Division (6th thru 8th grade students) and the Senior Division (9th thru 12th grade students). Exhibits were classified into 13 general categories for judging; including engineering, computer science, physics, and environmental science.



For the twentieth straight year the IEEE Southeastern Michigan (IEEE-SEM) Section has provided a team of volunteer judges to evaluate student projects associated with IEEE fields of interest. The Section would like to express its appreciation to the IEEE-SEM Section members who volunteered to be members of the IEEE professional awards judging team or serve in other roles this year.

Science Fair Judging Team:

The Section wishes to thank the eight (8) IEEE members, and their companies/institutions, for taking the time to volunteer and help to make the Science Fair a more pleasurable and meaningful experience for the middle school and high school students who participated.

The IEEE-SEM judging team was composed of the following seven (7) volunteers:

Don C. Bramlett, PE,
SMIEEE, FESD, FMSPE
DTE Electric (DTE Energy)

Laurence G. Dishman
Wayne State University

Robert Severinghaus,
Ph.D.
U.S Army TARDEC

Mansoor Nasir, Ph.D.
Lawrence Technological
University

Ralph Mackiewicz
SISCO, Inc.

Kimball Williams
DENSO – retired

James Rofe

(Sorry. The names and
photos are not in order.)



Other IEEE/SEM Section members served in other capacities at the SEFMD, such as:

Dave Morris, Ph.D. (General Category (Engineering) Judge)
Mitre

The judges had the opportunity to view and evaluate a number of exhibits, especially some interesting projects in areas pertinent to IEEE fields of interest. The judges and the high school students in the Senior Division had the pleasure to interface and discuss in depth some of the principles, scientific techniques, engineering approach, experimental results and applications pertinent to the projects.

Science Fair Awards:

The IEEE-SEM Section, based on the evaluations of the panel of judges, awarded four (4) First Place Grand Awards, consisting of a personalized certificate and a cash award for each awardee. These awards were presented to:

Senior Division:

Amina Mustafa, a sophomore at Dearborn Center for Math, Science & Technology in Dearborn Heights for her project entitled "Composing Music with Sign Language Pattern Recognition."

Sandra Alaziz, a sophomore at Dearborn Center for Math, Science & Technology in Dearborn Heights for her project entitled "Traffic Powered Street Lights."

Rishabh Parekh, a freshman at West Bloomfield High School in West Bloomfield for his project entitled "Talking Tweety – A Computer Algorithm to Convert Tweets to Audio for the Blind."

Junior Division Team:

Aasiyah Khan and Dana Alzohili, both in the 8th Grade at Huda School & Montessori in Franklin for their project entitled "Battle of the Blades."

The panel of judges also determined that the IEEE-SEM Section would provide a number of Outstanding Achievement Awards to other noteworthy projects in the Junior and Senior Divisions. Each outstanding Achievement Award consisted of a personalized certificate for each awardee. Some of these awardees include:

Leon Chen, in the 8th Grade at Novi Middle School in Novi for his project entitled "The Effect of Plate Geometry on Capacitance."

Amirah Aabed, in the 8th Grade at Crescent academy International in Canton for his project entitled "Stepping on the Solution."

Lahari Vavilala, in the 8th Grade at Novi Middle School in Novi for his project entitled "Generating Voltage with Bi-metal Couples."

Two of the IEEE Grand Award winners and one of the IEEE Outstanding Achievement Award winners were SEFMD Finalists and were exhibited at the Michigan Science Fair at the Michigan Science Center in Detroit on March 28.

For further information on the Science Fair judging, awards and project abstracts go to www.sefmd.org.

The IEEE/SEM Section plans to continue to staff other panels of special awards judges at both the Michigan Regional Future City Competition and the SEFMD in 2016, and in subsequent years.

These are just a couple of the pre-university education programs that the IEEE-SEM Section promotes.

-30-

Windsor Section Activity:

**THE IEEE STUDENT BRANCH
AT THE UNIVERSITY OF WINDSOR PRESENTS**

Autonomous Vehicles: Their Legacy and Future

A Lecture by Robert Neff

**February 23, 2015
5:00pm - 6:30pm**

Room 1100
Ed Lumley Centre for Engineering Innovation
University of Windsor

Review of the factors influencing automated features

- Military Involvement
- Automotive Manufacturers Involvement
- Federal Communications Commission Involvement
- US Department of Transportation Involvement
- Education of today's drivers with introductions of automated features
- How vehicle to vehicle communication will facilitate the future of autonomous vehicles
- What life could be like with autonomous vehicles.

ieeesb@uwindsor.ca
facebook.com/ieeeuwindsor

On February 23, 2015 Windsor Section members saw Southeastern Michigan Chair, Bob Neff present a lecture on Autonomous Vehicles. (See the 'flier' on the left.)

A goodly number of Windsor Section members turned out for the presentation as shown in the 'group photo' below.



Among the audience were both young student members....



As well as more seasoned professional IEEE Members.



Bob's relaxed presentation style places everyone at ease and promotes the full attention of the audience.

After the lecture, there are usually a few questions which answers, and also points folks to the appropriate references on the web.



ESD Gold Awards:

Several IEEE SEM Officers were honored at the annual Engineering Society of Detroit (ESD) GOLD Award Banquet. Below is the photo of the 'IEEE' Table attendees this year.



Around the table, beginning at the nearest:

- Scott Lytle,
- Kathy Lytle,
- Don Bramlett,
- Tayfun O
- Nick Langhals
- Dave Mindham,
- Kimball Williams
- C.J. Chung.

Our Section Vice-Chair, Nick Langhals, served as the IEEE Section presenting representative.

Among those receiving special notice for their long term significant contributions to the success of Southeastern Michigan Section at this event were:

Scott Lytle

Scott Lytle has held the position of chairman of the IEEE Southeastern Michigan, Chapter 8 Electromagnetic Compatibility Society continuously since 2008. His leadership has made this chapter the most successful chapter in the IEEE Southeastern Michigan Section. Membership, Technical programs, Section participation and financial strength are only some of the measures at which his chapter excels.





C.J. Chung

Dr. Chung began and grew robotics competition between schools at the elementary, middle, high and college levels as a fun way to learn STEM subjects. He is the founder and Director of Robofest at Lawrence Technological University. This year he held the World Robotic Olympiad national championships at LTU. Late this year he led 9 teams from the USA to the international championships in Sochi, Russia.

Tayfun Ozdemir

Dr. Ozdemir has been instrumental in guiding IEEE SEM Chapter4 to continued success and financial stability since 2004. In addition his leadership in establishing the Great Lakes Technology Symposium has identified him as both an exceptional organizer and manager but, a long range thinker and planner.



Kevin Taylor

Kevin Taylor led the IEEE Southeastern Michigan Chapter 7 from 2006 through 2014. In addition, Kevin has also brought several high profile conferences to Southeastern Michigan and established a financial base for his Chapter.

Kevin was unable to join us for the awards, so Nick accepted on his behalf. We plan to present this award, in person, to Kevin at the SEM Spring Conference on April 28, 2015.



Around the Section:

SEM Consultants Affinity Group:

Talk about serendipity! At the March meeting of the Consultants AG, the evenings' planned speaker could not attend the meeting. Instead everyone had a chance to network, discuss their favorite topics, verbally arm wrestle, and generally get better acquainted

I can honestly say this was one of the most enjoyable IEEE meetings I have attended in quite a long while. Officially, we chalked this one up as an administrative executive committee meeting, since we did talk about business.



However, for me, the best part of the meeting was just having a chance to talk at length with some very interesting and intelligent members. Thank you Consultants! I plan to be at the next one, and hope the speaker doesn't make it again.

University of Michigan – Dearborn: Student Branch

The U/M-D Student Branch, ably led by Jordan Rathwell, (Below on the left) the Branch Chair, assisted by Abhilash Reddy Lingala, (Below on the right) the Secretary under the guidance of their adviser, Stanley Baek (Below on the right) are moving the Branch to a position of security and stability.



Student Branch officer meetings are held every other week on Wednesday afternoons on campus, and a number of technical events for U/M-D students as well as social events for more than one Student Branch in the section are planned, or completed.

Currently in planning are the steps needed to ensure the election of an effective officer team in the next term, with sufficient officers in 'advisory' positions to help the new officers over any 'rough spots'.



Section Conference Plans:

Anyone who has gotten involved in the planning and execution of an SEM Section Conference can appreciate the work of our two co-chairs of the Spring Conference: **Nevrus Kaja** (on the left) and **Randy Boone** (at the right).



Both appear to be holding up well under the pressure. Anyone who wishes to help out at the actual event is encouraged to contact them using the information in the Officer Roster on the SEM Website and volunteer some of your time.

It can be a unique and valuable experience.



The conference committee is designed to support the conferences produced by Southeastern Michigan Section. These conferences are organized with the intent to provide number of IEEE related opportunities to the members with in the Southeastern Michigan.

In general, conference committee supports the two major conferences for every year: Spring and Fall conferences. The Spring and Fall Conferences serve several purposes one of which being to provide a forum for our Chapters to have technical meeting twice a year.

Also, the conferences provide a single place for a wealth of intellectual and network resources.

For each of these conferences, there is a chair, Vice Chair and Event Coordinator. These chairs report to the Chair of the Conference Committee. The Committee Chair is responsible for organizing the conference and ensuring the conference is held successfully.

Conference Committee establishes a series of subcommittees to handle different aspects of the conference planning. These committees may include: Treasurer, Technical Speakers, Facilities, Registration,

Marketing/Program Books, Sponsors, Posters and others. The chairs of these committees will serve on the conference committee.

Southeastern Michigan Section Conference committee helps to develop the technical program, speaker arrangements, arranging for posters, venues, marketing the event, registrations and publication of the Conference booklet.

The Conference Committee holds regular conference calls (2nd and 4th Thursday of the month @ Noon) necessary to ensure that satisfactory progress is being made and report regularly to the chair.

Following are the key activities of Conference Committee:

- Work with the Treasurer to generate a budget and to track the budget during the conference
- Identify venue for conference and work out a plan for ancillary items such as A/V setup, food, drinks, exhibit tables, space for speakers, poster)
- Work with Technical Activities group to arrange for keynote speaker, chapter speakers and any additional participants (i.e. panel, distinguished speaker, student posters)
- Develop a marketing plan generated for attendance, sponsorship
- Review and signoff on promotional materials generated (posters, flyers, etc.)
- Work with various sponsors to bring in funds for the conference
- Gather the required information to include in the registration site and verify the correct functionality of registration tool.
- Verify publication and distribution of conference advertising (program book etc.)

- Call for student posters in an effort to recognize student members for their work and also provide them an opportunity to network with other IEEE members in Southeastern Michigan
- Participate in the regular bimonthly conference calls to track conference planning and execution
- Follow 'real time' conference progress to catch and correct 'glitches'.
- Ensure conference runs smoothly (venue setup properly, adequate A/v, display, tables, etc.)
- Present final Report to Executive Committee, IEEE SEM.

Raju Brahmandhabheri, Chair, Conference Committee



Raju Brahmandhabheri has been the Chair of the Conference Committee since January 2013. Raju received the B.S. degree in Power Engineering from JNT University, India (2001), a MS degree in Power Engineering from Mississippi State University (2003). Raju has been employed with ITC Holdings, Corp, headquarter in Novi, Michigan from past 9 years holding numerous power engineering related assignments. He is currently working as the Manager, Regional Planning group. Raju is a senior member of IEEE and held various positions within IEEE SEM: Director of Student Activities: 2012-2013. Vice Chair, Power Engineering chapter 2013-2014.

IEEE SEM Spring Conference, Co-Chairs:



Dr. Randy Boone is the Chair of the Nanotechnology Chapter and Director of Industrial Relation for SEM IEEE Society. Randy received the B.S. degree in electrical and computer engineering from the University of Iowa (1988), a MS electrical engineering from Wayne State University (1992), a MS engineering management from University of Detroit-Mercy (1996) and completed a PhD in 2011. Randy has been employed with Ford Motor Company for the past 25 years holding numerous product development assignments. His current assignment is working in the Electrified Powertrain Engineering (EPE) organization developing both Hybrid and Electric Vehicle application for future products. Randy is also an adjunct professor with the Electrical and Computer Engineering Department at the University of Michigan – Dearborn and has taught a number of courses including: Automotive Sensors and Actuators, Engineering Mathematics, Embedded Systems and Active Automotive Safety Systems.

Nevrus Kaja has been a member of IEEE since 2010 when he moved to USA from his origin country, Albania. After transferring from Eastern Michigan University, Nevrus has been involved in many campus organizations and research activities. Since he started at UM-Dearborn he has held many leadership positions including the Section Student Representative for the IEEE-SEM Section. During this time he was a significant contributor to the success of the Student Network Project. This project has turned out to be a success for our Section and the Region has expressed interest to fund it and implement it in other sections as well. He currently is the Section Student Activities Chair



Other' Coming Events

We always try to publish IEEE events in several places to ensure that everyone who may want to attend has all the available relevant information.

SEM Web Calendar:

<http://sites.ieee.org/sem/>

Select "SEM Calendar" button in the top row of the website.

SEM Web Meetings:

<http://sites.ieee.org/sem/>

Select "SEM Meeting List" button in the left-hand column.

vTools Meetings:

<http://sites.ieee.org/vtools/>

Select "Schedule a Meeting" button in the left-hand column of buttons.

Other Happenings:

However, since IEEE members tend to have eclectic interests, we want to give everyone a heads up for some of the non-IEEE events that may be of interest.

Some events on various pages of this newsletter are not IEEE sponsored events. For example, there is an announcement of classes at three locations to prepare for the Amateur Radio Operator License test. Many Electrical Engineers began their early interest

in electronics through amateur radio. Others have pursued amateur radio later when they were well into their careers.

Let us know if you have a special interest in a field that encourages technical study and learning, and wish to share opportunities for participation with members of the section. Send the particulars to k.williams@ieee.org and an announcement may be placed in the newsletter.

*

Links:

Below are links to local SEM Clubs engaged in technical hobbies as well as links to sites that may be useful for locating clubs in the area.

Amateur Radio Clubs in Southeastern t Michigan

(This is a fairly comprehensive listing of all the 'Ham' clubs in SEM.)

<http://www.wa2hom.org/ham-radio-clubs-in-se-michigan/>

Model RC Aircraft:

<http://www.skymasters.org/>

Model Rocketry:

<http://team1.org/>

Astronomy:

<http://www.go-astronomy.com/astro-clubs-state.php?State=MI>

Experimental Association:

<https://www.eaa.org/en/ea/ea-chapters/find-an-eea-chapter>

Robots:

<http://therobotgarage.com/about-us.aspx>

Science Fiction Conventions:**Great Lakes Comic Expo**

Feb. 28, 2015

www.greatlakescomiccon.org

Fantasticon Toledo

April 11-12, 2015

www.fantasticon.net

Mad Science:

<http://www.madscience.org/>

ESD PE Review Class:

www.esd.org

Michigan Robotics Day:

National Center for Manufacturing Sciences
Collaboration That Works**2015 Michigan Robotics Day****SAVE THE DATE!****Thursday April 9, 2015- Ann Arbor, Michigan****SPACE IS LIMITED -> [REGISTER NOW!](#)**

Please join us at the North Campus Research Complex (NCRC) for an event co-hosted by the National Center for Manufacturing Sciences (NCMS) and the University of Michigan.

This free event ([registration required](#)) is open to all ages and has been recognized as the premier national event celebrating National Robotics Week.

Come experience the cutting-edge advances made by Michigan robotics' companies and research organizations, hear from leading minds in the field, and see how students at the collegiate and high school levels are involved with these exciting new technologies!

- Demonstrations
- Hundreds of flying, rolling, and swimming robots
- Breakout sessions for educators and industry

Interested in exhibiting? please contact philc@ncms.org

<http://www.mirobotics.org/>

Follow us on Twitter [@MiRobotics](#)

[Like us on Facebook](#)

#miroboday

Location: University of Michigan- North Campus
Building 18, North Campus Research Complex
2800 Plymouth Rd.
Ann Arbor MI, 48105

Sender Information

To be removed from future mailings please reply with "unsubscribe all" to be removed from ALL NCMS mailings.

National Center for Manufacturing Sciences
3025 Boardwalk
Ann Arbor, MI 48108

©2015 National Center for Manufacturing Sciences, Inc.

Refer a Colleague:

Refer a Colleague, Get Great Merchandise

In conjunction with IEEE-USA, we are pleased to continue this special offer for US members.

[Refer a colleague to join IEEE](#). They'll get a US\$25 discount off their first year membership, and you'll get a gift. But this discount expires on 28 February - submit your referrals now!

IEEE-USA gift items you can choose from include:

- Cooler backpack
- Computer backpack
- Portable battery charger
- Tablet case
- Portable speaker
- Parker pen and mechanical pencil set
- Parker ballpoint pen
- Travel coffee mug and tumbler set
- Golf balls
- Baseball hat
- Golf umbrella
- Travel umbrella

You will also be eligible to receive incentives through the IEEE Member-Get-a-Member (MGM) program.

How it works:

- Refer your colleague via the [online form](#).
- Your referral will receive an e-mail inviting them to join at a US\$25 discount off their first-year membership dues.
- This discount expires on 28 February.
- Your referral will provide your IEEE member number as they join.
- Within 1-3 weeks after your referral joins, you will receive an e-mail confirming your recruiting success, including a link to select your IEEE-USA merchandise item.
- You will receive a separate e-mail for each new member you recruit.

Please help spread the word and share your IEEE experience - no one knows how beneficial IEEE Membership is for technical and career development better than you, the member. [Refer your friends and colleagues today!](#)

Sincerely,

Elyn Perez

IEEE Member & Geographic Activities

Important to know: There is no limit to the number of merchandise items you can earn; as long as your referrals join as professional members. Student members and Society Affiliates are not eligible for this promotion. You also remain eligible for the [MGM incentive awards](#) given out once per year in September.

IEEE • 445 Hoes Lane, Piscataway, NJ 08854 USA

Executive Committee

The SEM Executive Committee is the primary coordination unit for Southeastern Michigan (SEM) IEEE operations. The basic organization chart below shows the 2015 arrangement of communications links designed to provide inter-unit coordination and collaboration.

The SEM Executive Committee meets in a teleconference each month on either the first Wednesday or first Thursday at noon. The specific meeting days, times, phone or WebEx numbers and log in codes are published on the IEEE SEM Website calendar: <http://sites.ieee.org/sem/> Click on the "Calendar" button in the top banner on the first page of the w.

If you wish to attend, or just monitor the discussions, please contact David Mindham, the section secretary at: dmindham@ieee.org and request to be placed on the distribution list for a monthly copy of the agenda and minutes.

More meeting details are available on the next page of this newsletter.

Other Meetings:

Most of our members maintain memberships in one or more of the IEEE Technical Societies, which automatically makes them members of the local chapter which is affiliated with that society. As a result, they should receive notices of the local chapter meetings each month.

However, members of the section may have multiple technical interest and would like to have meeting information of other

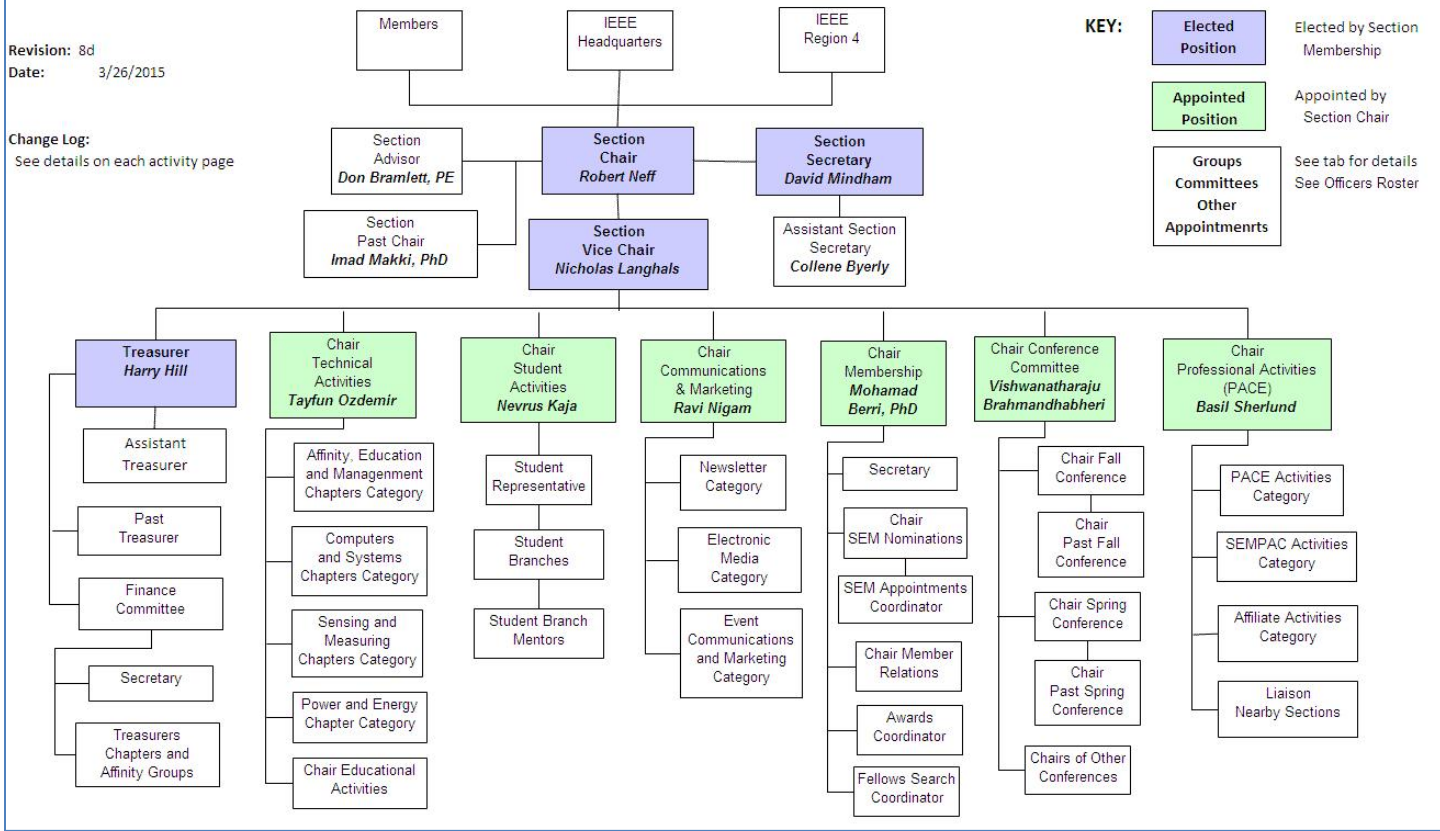
chapters. In order to communicate the meetings dates of all the chapters, affinity groups etc., to our members to facilitate their attendance, ur leaders of the groups are requested to send meeting information to our webmasters for posting on section's calendar.

More detailed information on meetings may be found by using the IEEE meetings site. This may be found through the IEEE SEM Website: <http://sites.ieee.org/sem/> and clicking on the SEM meetings list button near the bottom of the left hand banner.

Automatic e-mail notification of web updates may be received using the "Email Notifications" button at the top of the SEM Tools/Links side banner.

David Mindham - SEM Secretary

Current Organization - IEEE Southeastern Michigan Section (SEM)



Download the complete SEM Organization Chart, in PDF format, from the SEM Website at: www.ieee-sem.com Then, click on "About SEM" Tab, followed by, click on "Current Officers"

Section Mission & Goals**Section Focus:**

The IEEE SEM Senior Officers of the Section have reaffirmed the overall Mission and Goals of the Section, which align with the overall objectives of IEEE worldwide and with the guidance provided by our leadership in Region 4.

You have probably seen the Mission and Goals before. However, it is important to keep these clearly in mind and remind ourselves often that this is what we are about and what we are trying to accomplish.

Section Mission

Inspire – Enable – Empower and Engage Members of IEEE at the local level.

For the purpose of:

- Fulfilling the mission of IEEE (...**foster technological innovation and excellence for the benefit of humanity.**)
- Enhancing the members' growth and development throughout their life cycle
- Providing a professional home

Section Goals

- Increase member engagement,
- Improve relationships with and among members,
- Increase operational efficiency and effectiveness, within the section and its interfaces,
- Enhance collaboration – serve as the local face of IEEE to the community,
- Increase membership,
- Ensure the collection of appropriate information necessary to assist the IEEE to become a data driven organization.

It is now the task of the Section leadership to guide and coach all Section officers and elements to focus their activities on achieving those goals.

SEM Monthly Meetings**Scheduled Meetings:**

The regular meetings of the SEM 'Leadership' (Executive Committee) are scheduled well in advance to allow everyone to place them in their personal planning calendars, and then defend those dates against encroachment. (*Not always possible.*)

Two types of Monthly meetings are normally scheduled:

Monthly Teleconference / WebEx as well as:

Quarterly Face-to-Face. (See Below)

Note: All IEEE meetings are 'Open' for all members to attend.

The only caveat is that you please register using the specific meeting form on found on the vTools site at:

<https://meetings.vtools.ieee.org/main>

This will ensure we have sufficient space, refreshments and support for everyone who joins the meetings.

Teleconference Schedule

(held from 12-1 PM):

- May 6, 2015
- June 4, 2015
- August 5, 2015
- September 3, 2015
- November 5, 2015
- December 2, 2015

F2F Meeting Schedule:

- April 8, 2015
- July 9, 2015
- October 7, 2015
- January 7, 2016

More information for the f2f meetings will be sent out as the dates are approached. Keep in touch via the SEM Web site (<http://sites.ieee.org/sem/>) or use the links to the SEM Facebook or LinkedIn pages on the SEM Web page.

All the normally scheduled meetings of each of the other section chapters, affinity groups etc. are listed each month in the vTools area of our SEM website at:

http://ewh.ieee.org/r4/se_michigan/calendar1.php

These announcements refer to:

Standing Committee Meetings:
Affinity Group Meetings:
Technical Chapter Meetings:
University Student Branch Meetings:

Calendar Schedule:

Meetings are also announced on the SEM Web page Calendar

<http://sites.ieee.org/sem/>

(Select the "SEM Calendar" button in the top row.)

Note: Often meetings of the 'Executive Committees' of Chapters and Affinity Groups (and standing committees, of course) are listed only in the 'SEM Calendar' page, since it is felt that most members would not wish to sit through the 'administrative' meetings. However, if this type of meeting is just your 'cup of tea', then contact the officers of the unit that is conducting the meeting, and ask to be 'linked' into their teleconference, SKYPE, Google Hangout, or WebEx meeting. They would be happy to have you as a participant.

Many volunteers get interested in Section activities when they get a chance to attend a Monthly meeting and 'peek under the hood' to find out how the machinery of the Section actually runs. It can be a rewarding experience.

David Mindham

SEM Section Secretary.

dmindham@ieee.org

-30-

Editors Corner

Previous editions in this series may be found on the IEEE SEM Web page at: <http://sites.ieee.org/sem/>. Click on the "Wavelengths" button in the top row of selections.

Comments and suggestions may be sent to the editor at k.williams@ieee.org. We also recommend a cc to the Chair of the Communications and Marketing Committee, **Chaitanya Setti** at: chaitanyagini@ieee.org.

The newsletter does not have a staff of reporters to 'investigate' what is going on in the Section and write up informative articles.

We rely on our Officers and Members to provide the 'copy' that we finally present to our readers as the newsletter.

The **Wavelengths Focus Plan and Personal Profiles** plan shown in the matrix below is conceived as a method to ensure a reasonable coverage of normally expected Section activities and events.

We try to finish each issue assembly by the week before the first of each month to allow time for review and corrections. If you have an article or notice, please try to get it to us on time or early if possible.

The plan below relies on the contributions of our members and officers, so please do not be shy. If you have something that should be shared with the rest of the Section, we want to give you that opportunity.

Co-Editors:

I am selfishly looking for members interested in helping to edit the newsletter along with me who can learn the process, share in the duties, and help keep the newsletter alive and lively by providing alternative points of view.

If you feel you might be that person, or would like to train to become that person, please let me know.

k.williams@ieee.org

-30-

Wavelengths Focus Plan:

Month	AG's	Ch's	Ch's	SB's	Specal Notice	Reporting Events	Monthly Focus	Awards
Jan		1		U/D-M	Future Cities Judges	Election Results	Resolutions	
Feb	Cons	2		MSU	Science Fair Judges	Officer's Welcome	Surviving Winter	Future Cities
Mar		3	13	U/M-AA	Spring Conf. Flyer	Spring Conference	Spring Conference	Science Fair
Apr		4		WSU	National Engrs Wk.	Future Cities	Chapter Focus	GOLD Award
May	Life	5	14	LTU	Outstanding Eng Awd	Science Fair	Humanatarian	New Fellows
Jun		6		SCC	IEEE-USA Apmts.	ESD Banquett	Leadership Skills	SEM Awards
Jul		7	15	U/W	Nominations Call	MD-Webcasts	Students Issues	Region 4
Aug	WIE	8		OU	MGA - Apmts.	Tech-Webinars	Womens Issues	
Sep		9	16	EMU	Region 4 Apmts.	Engineers Day	Professional Skills	
Oct		10		ITT	Fall Conf. Flyer		Fall Conference	
Nov	YP	11	17	U/M-D	ELECTIONS!			
Dec		12			IEEE-Com Apmts.	Fall Conference	Happy Holidays	

Wavelengths – Personal Profiles:

Month	Profiles	Profiles	Committees
Jan	Chair	New Officers	
Feb	V-Chair	Secretary	Communications
Mar	Treasurer	Sect-Adviser	Conference
Apr	Stud-Rep		Education
May		Sr Officers	Executive
Jun			Finance
Jul			Membership
Aug			Nominations
Sep			PACE Activities
Oct			Student Activities
Nov			Technical Activities
Dec		Editor-WL	



Web & Social Sites

SEM Website

<http://sites.ieee.org/sem/>

Each of the sites below may be accessed through the SEM Website:

Section Website Event Calendar

(Select the "SEM Calendar" button - top row.)

SEM Facebook Page

(Select the "" button under the top row.)

SEM LinkedIn Page

(Select the "" button under the top row.)

SEM Officers:

For a complete listing of all - Section - Standing Committee - Affinity Group - Chapter and Student Branch Officers, see the SEM Officers Roster on the SEM web page under the "About SEM" button and select "Current Officers".

SEM On Line Community

<http://sem.oc.ieee.org>

Section Officers

Section Chair

Robert Neff

Section Secretary

David Mindham

Section Vice-Chair

Nicholas Langhals

Section Treasurer

Praveen Kumar

Section Adviser

Don Bramlett

Chair Communications & Marketing

Ravi Nigam

Chair Conferences

Raju Brahmandhabheri

Chair Educational Activities

Chaomin Luo

Chair Finance

Basil Sherlund

Chair Membership

Mohamad Berri

Chair Nominations

Kimball Williams

Chair Professional Activities

Basil Sherlund

Chair Student Activities

Nevrus Kaja

Student Representative

Samer Koda

Chair Technical Activities

Ali Eydgahi

Past Section Chair

Imad Makki



IEEE Southeastern Michigan

Visit Us on the Web at:
<http://sites.ieee.org/sem>



Leadership Meetings

All IEEE members are welcome to join us at any regularly scheduled meeting:

Advertising Rates

SEM Website & Newsletter
 Advertising Rates / Month:

Our readers specify & purchase a wide range of electronic components, equipment and services.

Our sponsors come from industry, education, and nonprofit organizations.

Full page \$500,

Half page \$250

Quarter page \$125,

Eighth page \$65.

SEM Executive Committee Monthly Teleconferences:

- 1st Wednesday or Thursday of Each Month @ Noon
- Check the Section Web Calendar at:
[http://sites.ieee.org/sem/](http://sites.ieee.org/sem)
 (Select the “SEM Calendar” button in the top row.)

SEM Executive Committee Face-to-Face Meetings:

- 1/Qtr. Usually held at U/M-D Fairlane Center
- Registration at:
<https://meetings.vtools.ieee.org/main>

SEM Standing Committee Meetings:

SEM Affinity Group Meetings:

SEM Technical Chapter Meetings:

SEM University Student Branch Meetings:

- Meeting schedules are announced on SEM Web Calendar
<http://sites.ieee.org/sem/>
 (Select the “SEM Calendar” button in the top row.)
- Registration for all at:
<https://meetings.vtools.ieee.org/main>