



# Wavelengths

Volume 55 – Issue 3  
March 2015

## Contents

<b>Section Chair's Message</b>	<b>1</b>
<b>Science Fair Judges:</b>	<b>2</b>
<b>New Standing Committee:</b>	<b>2</b>
<b>Section Spring Conference:</b>	<b>3</b>
<b>Officer Opportunities:</b>	<b>4</b>
<b>eit-2015 Conference:</b>	<b>4</b>
<b>Windsor Section!:</b>	<b>5</b>
<b>Officer Training:</b>	<b>6</b>
<b>LEADERSHIP SKILLS</b>	<b>7</b>
<b>Amateur Radio License Classes:</b>	<b>8</b>
<b>Refer a Colleague:</b>	<b>9</b>
<b>MGA Appointments:</b>	<b>10</b>
<b>EMC Fest 2015</b>	<b>11</b>
<b>Other' Coming Events</b>	<b>12</b>
<b>Michigan Robotics Day:</b>	<b>13</b>
<b>Refer a Colleague:</b>	<b>14</b>
<b>Executive Committee</b>	<b>15</b>
<b>Section Mission &amp; Goals</b>	<b>16</b>
<b>SEM Monthly Meetings</b>	<b>16</b>
<b>Editors Corner</b>	<b>17</b>
<b>Section Officers</b>	<b>18</b>
<b>Web &amp; Social Sites</b>	<b>18</b>
<b>Leadership Meetings</b>	<b>19</b>
<b>Advertising Rates</b>	<b>19</b>

Wavelengths Newsletter is produced by IEEE volunteers and published by Southeastern Michigan (SEM) Section for the members.  
Newsletter Archive: <http://sites.ieee.org/sem/>

## Section Chair's Message

I am frequently asked, "How do I get involved as a volunteer in the IEEE SEM Section or one of its chapters or affinity groups? If you wish to be involved in the section, please contact me or a chair of one of our chapters or affinity groups, if you are interested their technical area or professional activities. Their contact information can be found on our website, [www.ieee-sem.org](http://www.ieee-sem.org); click on the tabs "About SEM" and then "Current Officers". The chairs can provide information and answer questions on your particular interests. This newsletter is a great way to become familiar with the activities in our section, chapters and affinity groups.

The section, chapters and affinity groups are your local links to the valuable IEEE resources. Section and chapter activities include guest speakers, workshops, seminars, conferences and social activities. They provide members with a local network of individuals with occupations and interests similar to yours. Your professional and personal growth can be enhanced with involvement in these activities. However, you may have concerns about the level of involvement that is required. There is no requirement for the level of involvement; you can do as little or as much as you wish. Your involvement at any level will be most welcomed. We understand that our members have a range of responsibilities which play a role in the time that is available for volunteering. All volunteering efforts are welcomed and greatly appreciated. Please feel free to



contact me if I can be of any assistance.

Work on our Spring Conference is well underway and is planned to be a wonderful event. See page #3 of this newsletter for additional information. The conference web site is [www.ieee-sem.org/spring](http://www.ieee-sem.org/spring). This is but another way to network with your peers that have technical interests similar to yours. Who knows, you might even learn something in an area that lies outside of your current interests.

I am pleased to report that a new IEEE Section has been formed in Windsor; it has been recognized by IEEE Headquarters, officers have been elected and initial meetings held. Please see the article on page 5 of this newsletter About the Windsor Section

I look forward to hearing from you and seeing you at our events. As always, your ideas and suggestions are encouraged and welcomed.

**Robert Neff**  
IEEE SEM Section Chair  
[RLNeff1@gmail.com](mailto:RLNeff1@gmail.com)

**Science Fair Judges:****IEEE-SEM MEMBERS  
NEEDED AS SCIENCE FAIR  
JUDGES**

By Don C. Bramlett, PE, SMIEEE

Please volunteer to serve on the elite panel of judges for the professional awards being sponsored by the Southeastern Michigan Section of the Institute of Electrical and Electronics Engineer, Inc. (IEEE SEM) at the 58th Annual Science and Engineering Fair of Metropolitan Detroit (SEFMD). This is the twentieth straight year that IEEE SEM has provided judges and sponsored professional awards for projects associated with electrical, electronics and computer engineering.

Judging will be on Wednesday, March 11<sup>th</sup> at the Science Fair, to be held at Cobo Hall in downtown Detroit. The Science Fair will be in the Michigan Hall this year which is located on the Lower Level or Level (0). Please plan your arrival at the hall between 7:45 and 8:30 a.m. in order to have time to enjoy free coffee and muffins. We will be near the Professional Awards Judging Desk (front of hall near the muffins and coffee); bypass the normal judge check-in as you enter the front of Michigan Hall.

As last year, IEEE SEM plans to provide judging for both the Junior (5th – 7th grade) Division and the Senior (High School) Division. It is anticipated that the IEEE SEM awards judging will start at 8:45 a.m. and be completed by 11:30 a.m. IEEE SEM will tentatively present two Grand Awards with framed certificates and cash prizes; several Honorable Mention Recognition Awards with framed certificates will also be presented.

The planned routine is to separate into small groups and then quickly roam

through the assigned sections with the project displays and identify the projects related to electrical, electronics and computer engineering that are worthy of further review by the panel of IEEE SEM judges. It is anticipated that there will only be a small number of relevant projects. We will then form one team of judges to evaluate in greater detail the selected projects. Based on the number and quality of the selected project displays, the judges may choose to use either the supplied Project Evaluation and Judging Forms to grade the projects in each division, or use a less formal process, as deemed appropriate.

There is parking on the roof of Cobo Hall; free coffee and muffins will be available in the hall during the morning.

I look forward to seeing you at the 58<sup>th</sup> SEFMD. Please direct questions to me at my office, (313) 235-7549, during normal weekday business hours. At other times, I can be contacted at home, (734) 591-1452, or on my cell phone, 313-608-6223. I may also be contacted via e-mail at [d.bramlett@ieee.org](mailto:d.bramlett@ieee.org) or [bramlett@dteenergy.com](mailto:bramlett@dteenergy.com).

**Don Bramlett****New Standing Committee:**

A new Cross Section Liaison Committee is in the early stages of formation. IEEE SEM is recruiting a committee chair, as well as liaison officers to serve on the committee

The committee will establish and maintain mutually beneficial relationships between IEEE SEM and our four neighboring IEEE Sections, namely, Northeastern Michigan, Toledo, Windsor, Ontario and Western Michigan.

Due to the charge of the committee, a member with experience in section activities is preferred for committee chair. The committee will take its place in the SEM organizational chart as a sub-committee of the Membership Committee under the direction of Dr. Mohamad Berri.

If you would be interested in serving as the committee chair or as a liaison officer, please contact the Nominations & Appointments Committee Chair at [k.williams@ieee.org](mailto:k.williams@ieee.org).



# SPRING CONFERENCE

**Tuesday Evening, April 28, 2015**

**University of Michigan - Dearborn  
Fairlane Center – North Building**

19000 Hubbard Drive, Dearborn, Michigan 48126

**Meeting Agenda:**

- 4:00 PM – 5:15 PM Registration  
Display Tables / Student Posters / Networking
- 5:15 PM – 5:30 PM Conference Overview / Recognitions
- 5:30 PM – 6:00 PM Panel Discussion
- 6:00 PM – 7:00 PM Breakout Technical Sessions (2 Speakers per session)
- 7:00 PM – 7:45 PM Dinner
- 7:45 PM – 8:45 PM Keynote Speech
- 8:45 PM – 9:00 PM Awards and Recognition



**Keynote Presentation:  
Evolving State of Technology:  
Trends and Effect on Higher Education**

**Dr. A. W. (Tony) England**

Dean, College of Engineering and Computer Science  
University of Michigan - Dearborn

**Special Panel Discussion: You and Your Research  
Panel Moderator: Dr. Harpreet Singh**



**Conference Website: [www.ieee-sem.org/spring](http://www.ieee-sem.org/spring)**

**Officer Opportunities:**

The SEM Website <http://sites.ieee.org/sem/> holds the current Section Officer Roster under the "About SEM" top banner button, followed by the "Current Officers" button in the left hand panel. Selecting the most recent entry in the list on the main page will download the PDF version of the roster.

A careful read through of the listing shows two of our chapters are in need of volunteers to serve in leadership roles. Chapter 3 and Chapter 13 (shown below) each currently have only one officer who is struggling to keep the respective chapter active.

**CHAPTER 3 (AES10) Aerospace and Electronic Systems Soc., and (COM19) Communications Soc.**

Chapter 3	Officers
<i>Chair</i>	
<i>V-Ch. (AE Soc.)</i>	
<i>V-Ch. (Com Soc.)</i>	
<i>Secretary</i>	<b>Dmitry Dukhan</b>
<i>Treasurer</i>	

With a total SEM membership of 184, (31 in Aerospace Electronics Society and 157 in Communications Society) there should be members capable of assuming leadership roles in the chapter.

**CHAPTER 13 (E25) Education Soc.**

Chapter 13	Officers
<i>Temp Chair</i>	<b>Kenji Aono</b>
<i>V-Ch.</i>	
<i>Secretary</i>	
<i>Treasurer</i>	

While total SEM membership in the Education Society is only 27, we have a large contingent of senior educators in the section who could provide leadership.

Both of these chapters present significant volunteer opportunities for IEEE SEM members to gain leadership experience and contribute to technical educational programs for all levels of students in Southeastern Michigan, Both chapters are members of the corresponding national societies that have extensive resources to assist and support local operations

Participation as an officer in a chapter provides the framework in which to learn and practice the soft skills needed in order to establish and grow a successful engineering career. Think of this as a 'Post Graduate Studies' engineering course in which you will get some 'real world' experience in leadership, team building, communications, and command and control. Contact the chair of the Nominations & Appointments Committee at: [k.williams@ieee.org](mailto:k.williams@ieee.org) for more information and to discuss your options.

**EIT-2015 Conference:****2015 IEEE International Conference on Electro Information Technology.****Paper Submission Deadline Extended to March 2, 2015**

Submission of full papers: **March 2, 2015**

Notification of acceptance: **March 15, 2015**

Final manuscript (in PDF form): **March 29, 2015**

Author registration deadline: **April 1, 2015**

**Conference Website at:** <http://www.eit-conference.org/eit2015/>

Dr. Ibrahim Abdel-Motaleb at [ibrahim@niu.edu](mailto:ibrahim@niu.edu)

Dr. Hossein Mousavinezhad at [hossein.mousavinezhad@ieee.org](mailto:hossein.mousavinezhad@ieee.org) or

Jim Riess at [j.riess@ieee.org](mailto:j.riess@ieee.org)

**Windsor Section:**

The new IEEE Region 7 Windsor Section held its first section membership meeting on February 8<sup>th</sup> at the University of Windsor. Some photos from that event are shown below. Dr. Mohammed Khalid, University of Windsor Student Branch Adviser, welcomed the 80 members in attendance. He introduced Dr. Esam Abdel-Raheem, the 1<sup>st</sup> chair of the section who welcomed the attendees and outlined the bright and promising future of the section.



**University of Windsor Student Branch Adviser  
Dr. Mohammed Khalid**



**Dr. Esam Abdel-Raheem Welcoming Attendees**

One of the first order of business will be the organization of section's membership into IEEE Computer and Communication Chapters. There are a sufficient number of the section's members participating in these two societies to support local chapters. This is a great opportunity for Windsor IEEE members

to become "Keel Plate Owners" of the new chapters, creating significant memories in their lives,

To kick off the section's first technical meeting, an entertaining and enlightening talk was presented by two Windsor Section members, Ahmed El-Baba and Shawn Ruppert. The presentation was entitled: \_The Birth of a Product.



While IEEE Headquarters is working to fully integrate the section into the vTools and SAMIEEE database systems, the section leadership is planning technical meetings and student branch activities. IEEE SEM Chair Bob Neff gave a fascinating presentation at the February 23<sup>rd</sup> technical meeting on Autonomous Vehicles, Their Legacy and Future.



**Attendees at the 1<sup>st</sup> Windsor Section Membership Meeting.**

**Officer Training:****New Officer Training Options:**

Two new IEEE Section projects were begun in 2014 intended to help our chapters and affinity groups grow our local section activities and bring new section officers 'up to speed' on their functions and duties.

The first project was the creation of a Technical Activities Committee with experienced IEEE SEM volunteers to serve as technical activity coordinators for the sections.

The prime focus of these volunteers is to "...shepherd, coach, mentor and guide..." the individual officers leading affinity groups and chapters.

The second project was the creation of a series of on-line training modules. The modules are intended to provide the basic training needed to ensure that our officers have the knowledge needed to perform their functions. The intent is to provide training while avoiding face-to-face meeting costs such as facility rentals, refreshments and travel.

**Current Status:**

By the end of 2014, the technical learning curve associated with creating on-line training modules was nearing its completion. Usable modules were being developed and placed on the SEM Website for evaluation by members of the SEM Executive Committee.

During the same period of time, the creation and the assignment of volunteers to the Technical Activities Committee has been completed and it is now ready for its own initial organizational and training meetings.

**Next Steps:** In early March a series of e-mail notices to all our current officers will be sent advising them of

the on-line training modules and their location on the SEM Website. The notices will include a schedule for a series of on-line class meetings intended to provide question and answer opportunities on a particular series of training topics for each class.

Although we have made every effort to make each training module complete and stand-alone. It is inevitable that some topics will need further elaboration in order to achieve optimal training success. *(We also expect that after some of the Q&A meetings we will want to 'redo' some training modules.)*

**Class & Topics:**

The plan is for each class to follow a simple structure:

- **Before each class:**  
Volunteers will be asked to review the on-line training module(s) for each topic. (The "link" to the tutorial module[s] will be provided with the class schedule.)
- **On-Line Classes** will begin with a quick review of the tutorial topics to answer immediate questions.
- **Class discussions** will dig deeper into leadership issues and deal with the inevitable "what if" situations that officers have already encountered.

The expectation is that by conducting a series of on-line classes we will be able to reach most of our officers, without additional cost and travel time required for face-to-face meetings. Also by the training modules being on the website, they will be available when issues and questions arise.

Finally, with the Technical Activities Committee in place, volunteers may contact committee members for answers to questions about IEEE, the structure of its support elements, and administrative issues.

**Training Module Access:**

For those who are interested and want to take advantage of the new training modules now, they may be accessed by going to the SEM Website, <http://sites.ieee.org/sem/>,

The **SEM Tools/Links** is in left hand panel. Click on the **Training Material** button. The list of training power point slides and videos are in the center panel. We plan on developing links for specific resources; in the meantime, it will be necessary to search the site for materials of interest

Please send suggestions, comments and recommendations for improvement of the training materials to [tok.williams@ieee.org](mailto:tok.williams@ieee.org). They can be considered as the materials undergo revisions to improve their utility.

Leadership Skills

# LEADERSHIP SKILLS WORKSHOP

**Saturday, April 11, 2015 9:00 AM – 3:30 PM**

**Sterling Inn**

34911 Van Dyke Avenue, Sterling Heights, MI 48312

Telephone: (586) 979-1400

## Workshop Overview

Leadership is an important engineering tool, and learning to be an effective leader in various environments helps to guarantee your personal and professional success as an engineer. Leadership skills will definitely be part of your career when you are a leader or when you work with others who are leaders.

Leaders have vision and the ability to inspire others to accomplish great things. There are two reasons you will benefit by understanding the principles of leadership. First, you can apply these to leadership opportunities and achieve greater success. And second, you can work more effectively with leaders when you are part of their team. When you learn to be a leader and to work with other leaders you achieve greater success in your career and life.

The Leadership Skills workshop is intended to help participants develop and improve interpersonal, group, team and leadership skills. The workshop is targeted to those in management or leadership roles in business, industry, academia or volunteer organizations. However, anyone interested in further developing these skills in dealing with people and working within any type of organization will benefit from the workshop. The format for the workshop includes the presentation of the core material and interactive participation; using exercises, case studies and open discussion.

### Workshop Content

- Leadership
- Interpersonal communications
- Conflict Management
- Problem Solving and Decision Making



### DON C. BRAMLETT, PE, SMIEEE, FESD, FMSPE

Don Bramlett received his BSEE and MBA from the University of Detroit. He is a registered Professional Engineer. Don has spent his entire 40 year professional engineering career in the energy industry, 6 years in the natural gas industry, and then 34 years in the power generation segment of the electric utility industry. He is a Senior Project Engineer in Fossil Generation with the DTE Electric Company, a major subsidiary of DTE Energy, where he has overall responsibility for large capital projects at various power plants. Don has presented extensively at IEEE USA conferences and the IEEE Section Congress. Don has conducted many training workshops on leadership and professional skills for the IEEE Southeast Michigan section.

## Registration

Register at the Workshop web site <https://meetings.vtools.ieee.org/m/31697>

IEEE Members .....	\$10
Non Members .....	\$15
Students.....	FREE

**Workshop Website:** <https://meetings.vtools.ieee.org/m/31697>

Amateur Radio License Classes:

## Amateur Radio License Classes (Ham Radio)



Monday Evenings at Caroline Kennedy Library  
6:30 pm until 8:30 pm  
March 2, March 16, March 30, April 6, and April 20.

These free classes are offered by the *Motor City Radio Club* and will help teens and adults who wish to prepare for the Amateur Radio License Examination.

On May 9 all students are invited to take the MCRC bi-monthly License Examinations in Taylor, MI. (The license examination fee is \$15.00 paid at the exam site on the day of the exam.)

We will be using *The No-Nonsense Technician Class License Study Guide* by Dan Romanchic.

It is a free download of 58 pages in PDF format available at [www.kb6nu.com](http://www.kb6nu.com). Printed copies will be available at cost of \$6.00.

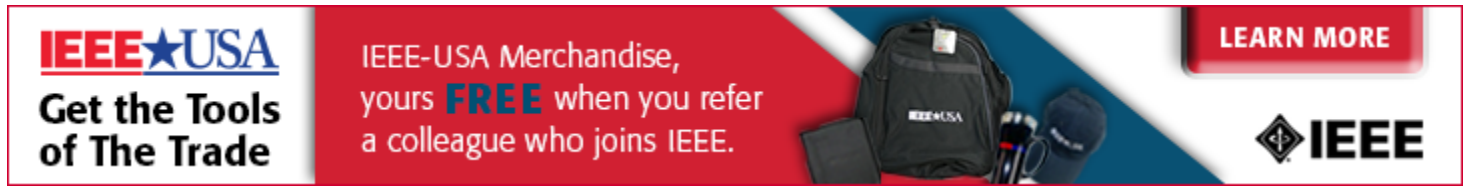
The ARRL license guide can also be purchased from the instructor at a cost of \$22.50.

**REGISTRATION IS REQUIRED,**

Stop at the Library Circulation Desk or call (313) 791-3802




## Refer a Colleague:



**IEEE★USA**  
Get the Tools of The Trade

IEEE-USA Merchandise, yours **FREE** when you refer a colleague who joins IEEE.

**LEARN MORE**


**Refer a Colleague, Get Great Merchandise**

In conjunction with IEEE-USA, we are pleased to continue this special offer for US members.

[Refer a colleague to join IEEE](#). They'll get a US\$25 discount off their first year membership, and you'll get a gift. But this discount expires on 28 February - submit your referrals now!

IEEE-USA gift items you can choose from include:

- Cooler backpack
- Computer backpack
- Portable battery charger
- Tablet case
- Portable speaker
- Parker pen and mechanical pencil set
- Parker ballpoint pen
- Travel coffee mug and tumbler set
- Golf balls
- Baseball hat
- Golf umbrella
- Travel umbrella

You will also be eligible to receive incentives through the IEEE Member-Get-a-Member (MGM) program.

How it works:

- Refer your colleague via the [online form](#).
- Your referral will receive an e-mail inviting them to join at a US\$25 discount off their first-year membership dues.
- This discount expires on 28 February.
- Your referral will provide your IEEE member number as they join.
- Within 1-3 weeks after your referral joins, you will receive an e-mail confirming your recruiting success, including a link to select your IEEE-USA merchandise item.
- You will receive a separate e-mail for each new member you recruit.

Please help spread the word and share your IEEE experience - no one knows how beneficial IEEE Membership is to technical and career development better than you, the member. [Refer your friends and colleagues today!](#)

Sincerely,

**Elyn Perez**

*IEEE Member & Geographic Activities*

Important to know: There is no limit to the number of merchandise items you can earn; as long as your referrals join as professional members. Student members and Society Affiliates are not eligible for this promotion.

You also remain eligible for the [MGM incentive awards](#) given out once per year in September.

**MGA Appointments:**

**IEEE Member and Geographic Activities Nominations and Appointments**

\*This message on behalf of Ralph M. Ford, MGA N&A Committee Chair\*

The **IEEE Member and Geographic Activities** (MGA) Nominations and Appointments (N&A) Committee is soliciting nominations for the following 2016 leadership positions:

- MGA Vice President/MGA Board Chair
- MGA Treasurer
- MGA Vice Chairs
- MGA Committee Chairs

[Nominate yourself or a colleague now](#)

The deadline to submit nominations is 15 March 2015.

A [complete list of available MGA positions](#), [committee descriptions](#), and information on the [MGA Nominations and Appointments process](#) are available.

In accordance with the IEEE globalization initiative and in an attempt to ensure that MGA is globally balanced, each Region is requested to submit nominations. Self-nominations are encouraged.

[http://www.ieee.org/societies\\_communities/geo\\_activities/nominations\\_and\\_appointments/index.html](http://www.ieee.org/societies_communities/geo_activities/nominations_and_appointments/index.html)

**EMC Fest 2015**

The Southeastern Michigan EMC Chapter (8)  
Proudly Presents:  
**EMCFest '2015**

**“The Grounds for Grounding”**

**A Tutorial and Exhibition**  
With Honored Guest Speaker

**Elya Joffe**  
EMC Society Past President

**Thursday, May 7, 2015**

At

**Embassy Suites**

**19525 Victor Parkway, Livonia, MI 48152**  
**734-462-6000**

IEEE Electromagnetic Compatibility (EMC) Society.

EMCFest'2014 Home Page:

<http://www.emcfest.org>

**Register On-Line!**



Mr. Joffe has been employed since 1987 by K.T.M. Project Engineering which is located in Israel He is V.P. of Engineering and a Senior EMC Engineering Specialist and Consultant. He holds a BScEE in Electrical Engineering from the Ben Gurion University in Israel. Additionally, Elya is a Registered Professional Engineer; iNARTE certified Senior EMC Engineer, ESD Control Engineer; EMC Master Design Engineer; Chair of the Exemplar Global BoD;

Immediate Past Chairman of the iNARTE Advisory Committee; and author of "Grounds for Grounding: A Circuit to System Handbook", published by John E. Wiley & Sons, 2009.

Mr. Joffe is Senior Member of IEEE; Past President of the EMC Society; Immediate Past President of the IEEE Product Safety Engineering Society; Past Chairman of the Israel IEEE EMC Chapter; and Member of the Board of Governors and VP for Conferences of the Society for Social Implications of Technology (SSIT).

**Program Outline - Thursday May 7, 2015**

7:30	<b>REGISTRATION, EXHIBITS &amp; CONTINENTAL BREAKFAST</b>
8:30	<b>Fundamental Concepts:</b> Paths of Current Return, Parasitic Paths, Grounds for Grounding and Why Grounding.
10:00	<b>Break &amp; Exhibits</b>
10:30	<b>Fundamental Grounding Schemes and The "Grounding Tree"</b>
12:00	<b>LUNCH</b>
1:00	<b>Ground Loops and their Mitigation (Who's afraid of the big bad (Ground) loops?):</b> Power Distribution vs. Grounding Schemes Interrelationships
2:30	<b>Break 7 Exhibits</b>
3:00	<b>Equipment and System Grounding Schemes:</b> Cable Signals and Shields' Grounding, Grounding-Related Case Studies, Summary and Wrap Up
4:30	<b>Ice Cream Reception</b>
5:00	<b>Close of EMCFest</b>

**FEE SCHEDULE**

Before April 24 2015

IEEE Members,	\$40
Non IEEE Members,	\$50
Students W/Student I.D.	\$25
Unemployed IEEE Members	\$25
Retired IEEE Members	\$25
CEU Certificate Only	\$25
<b>All after April 24th</b>	<b>\$100</b>

**For more details, and to register on-line, please visit the website at:**

[www.emcfest.org](http://www.emcfest.org)

**Other' Coming Events**

We always try to publish IEEE events in several places to ensure that everyone who may want to attend has all the available relevant information.

**SEM Web Calendar:**

<http://sites.ieee.org/sem/>

Select "SEM Calendar" button in the top row of the website.

**SEM Web Meetings:**

<http://sites.ieee.org/sem/>

Select "SEM Meeting List" button in the left-hand column.

**vTools Meetings:**

<http://sites.ieee.org/vtools/>

Select "Schedule a Meeting" button in the left-hand column of buttons.

**Other Happenings:**

However, since IEEE members tend to have eclectic interests, we want to give everyone a heads up for some of the non-IEEE events that may be of interest.

Some events on various pages of this newsletter are not IEEE sponsored events. For example, there is an announcement of classes at three locations to prepare for the Amateur Radio Operator License test. Many Electrical Engineers began their early interest

in electronics through amateur radio. Others have pursued amateur radio later when they were well into their careers.

Let us know if you have a special interest in a field that encourages technical study and learning, and wish to share opportunities for participation with members of the section. Send the particulars to [k.williams@ieee.org](mailto:k.williams@ieee.org) and an announcement may be placed in the newsletter.

\*\*\*\*\*  
\*

**Links:**

Below are links to local SEM Clubs engaged in technical hobbies as well as links to sites that may be useful for locating clubs in the area.

**Amateur Radio Clubs in Southeastern t Michigan**

(This is a fairly comprehensive listing of all the 'Ham' clubs in SEM.)

<http://www.wa2hom.org/ham-radio-clubs-in-se-michigan/>

**Model RC Aircraft:**

<http://www.skymasters.org/>

**Model Rocketry:**

<http://team1.org/>

**Astronomy:**

<http://www.go-astronomy.com/astro-clubs-state.php?State=MI>

**Experimental Association:**

<https://www.eaa.org/en/ea/ea-chapters/find-an-eea-chapter>

**Robots:**

<http://therobotgarage.com/about-us.aspx>

**Science Fiction Conventions:**

**Great Lakes Comic Expo**  
Feb. 28, 2015  
[www.greatlakescomiccon.org](http://www.greatlakescomiccon.org)

**Fantasticon Toledo**  
April 11-12, 2015  
[www.fantasticon.net](http://www.fantasticon.net)

**Mad Science:**

<http://www.madscience.org/>

**ESD PE Review Class:**

[www.esd.org](http://www.esd.org)

## Michigan Robotics Day:

**National Center for Manufacturing Sciences**  
**Collaboration That Works****2015 Michigan Robotics Day****SAVE THE DATE!****Thursday April 9, 2015- Ann Arbor, Michigan****SPACE IS LIMITED -> [REGISTER NOW!](#)**

Please join us at the North Campus Research Complex (NCRC) for an event co-hosted by the National Center for Manufacturing Sciences (NCMS) and the University of Michigan.

This free event ([registration required](#)) is open to all ages and has been recognized as the premier national event celebrating National Robotics Week.

Come experience the cutting-edge advances made by Michigan robotics' companies and research organizations, hear from leading minds in the field, and see how students at the collegiate and high school levels are involved with these exciting new technologies!

- Demonstrations
- Hundreds of flying, rolling, and swimming robots
- Breakout sessions for educators and industry

Interested in exhibiting? please contact [philc@ncms.org](mailto:philc@ncms.org)

<http://www.mirobotics.org/>

Follow us on Twitter [@MiRobotics](#)

[Like us on Facebook](#)

#miroboday

**Location:** University of Michigan- North Campus  
Building 18, North Campus Research Complex  
2800 Plymouth Rd.  
Ann Arbor MI, 48105

**Sender Information**

To be removed from future mailings please reply with "unsubscribe all" to be removed from ALL NCMS mailings.

National Center for Manufacturing Sciences  
3025 Boardwalk  
Ann Arbor, MI 48108

©2015 National Center for Manufacturing Sciences, Inc.

## Refer a Colleague:

**IEEE-USA**  
Get the Tools of The Trade

IEEE-USA Merchandise,  
yours **FREE** when you refer  
a colleague who joins IEEE.

**LEARN MORE**

**IEEE**

**Refer a Colleague, Get Great Merchandise**

In conjunction with IEEE-USA, we are pleased to continue this special offer for US members.

[Refer a colleague to join IEEE](#). They'll get a US\$25 discount off their first year membership, and you'll get a gift. But this discount expires on 28 February - submit your referrals now!

IEEE-USA gift items you can choose from include:

- Cooler backpack
- Computer backpack
- Portable battery charger
- Tablet case
- Portable speaker
- Parker pen and mechanical pencil set
- Parker ballpoint pen
- Travel coffee mug and tumbler set
- Golf balls
- Baseball hat
- Golf umbrella
- Travel umbrella

You will also be eligible to receive incentives through the IEEE Member-Get-a-Member (MGM) program.

How it works:

- Refer your colleague via the [online form](#).
- Your referral will receive an e-mail inviting them to join at a US\$25 discount off their first-year membership dues.
- This discount expires on 28 February.
- Your referral will provide your IEEE member number as they join.
- Within 1-3 weeks after your referral joins, you will receive an e-mail confirming your recruiting success, including a link to select your IEEE-USA merchandise item.
- You will receive a separate e-mail for each new member you recruit.

Please help spread the word and share your IEEE experience - no one knows how beneficial IEEE Membership is for technical and career development better than you, the member. [Refer your friends and colleagues today!](#)

Sincerely,

Elyn Perez

*IEEE Member & Geographic Activities*

Important to know: There is no limit to the number of merchandise items you can earn; as long as your referrals join as professional members. Student members and Society Affiliates are not eligible for this promotion. You also remain eligible for the [MGM incentive awards](#) given out once per year in September.

IEEE • 445 Hoes Lane, Piscataway, NJ 08854 USA

**Executive Committee**

The SEM Executive Committee is the primary coordination unit for Southeastern Michigan (SEM) IEEE operations. The basic organization chart below shows the 2015 arrangement of communications links designed to provide inter-unit coordination and collaboration.

The SEM Executive Committee meets in a teleconference each month on either the first Wednesday or first Thursday at noon. The specific meeting days, times, phone or WebEx numbers and log in codes are published on the IEEE SEM Website calendar: <http://sites.ieee.org/sem/> Click on the "Calendar" button in the top banner on the first page of the w.

If you wish to attend, or just monitor the discussions, please contact David Mindham, the section secretary at: [dmindham@ieee.org](mailto:dmindham@ieee.org) and request to be placed on the distribution list for a monthly copy of the agenda and minutes.

More meeting details are available on the next page of this newsletter.

**Other Meetings:**

Most of our members maintain memberships in one or more of the IEEE Technical Societies, which automatically makes them members of the local chapter which is affiliated with that society. As a result, they should receive notices of the local chapter meetings each month.

However, members of the section may have multiple technical interest and would like to have meeting information of other chapters. In order to communicate the

meetings dates of all the chapters, affinity groups etc., to our members to facilitate their attendance, ur leaders of the groups are requested to send meeting information to our webmasters for posting on section's calendar.

More detailed information on meetings may be found by using the IEEE meetings site. This may be found through the IEEE SEM Website: <http://sites.ieee.org/sem/> and clicking on the **SEM meetings list** button near the bottom of the left hand banner.

Automatic e-mail notification of web updates may be received using the "Email Notifications" button at the top of the **SEM Tools/Links** side banner.

**David Mindham** - SEM Secretary

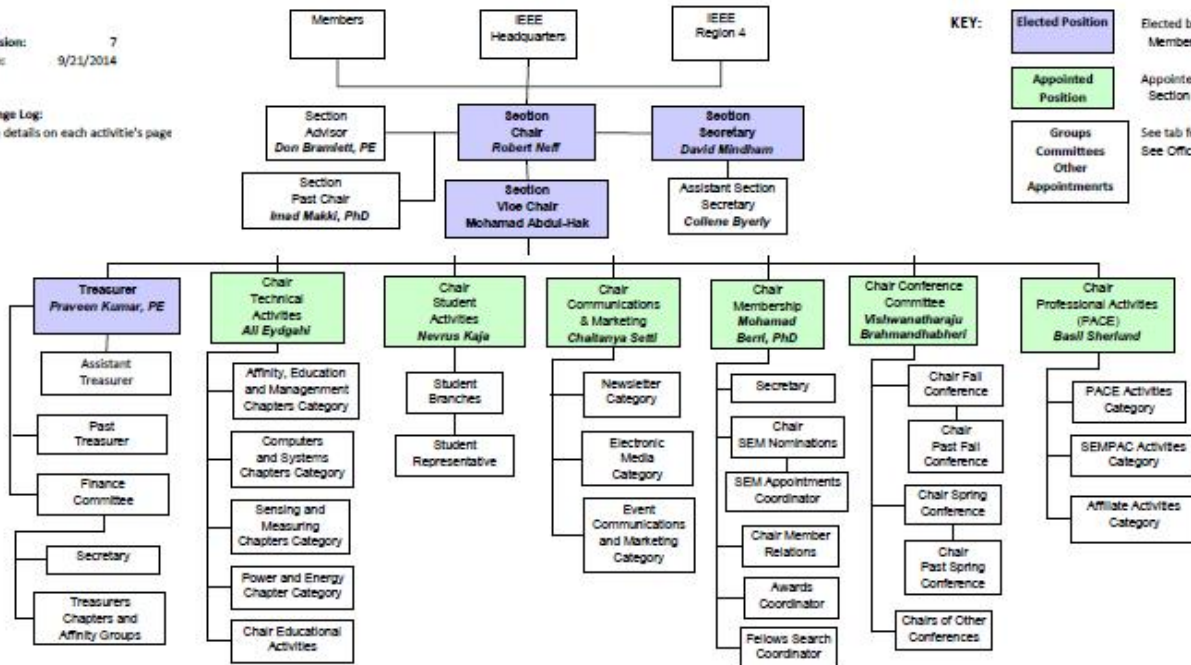
**2014 Organization - IEEE Southeastern Michigan Section (SEM)**

Revision: 7  
Date: 9/21/2014

Change Log:  
See details on each activitie's page

**KEY:**

- Elected Position Elected by Section Membership
- Appointed Position Appointed by Section Chair
- Groups Committees Other Appointments See tab for details See Officers Roster



**Section Mission & Goals****Section Focus:**

The IEEE SEM Senior Officers of the Section have reaffirmed the overall Mission and Goals of the Section, which align with the overall objectives of IEEE worldwide and with the guidance provided by our leadership in Region 4.

You have probably seen the Mission and Goals before. However, it is important to keep these clearly in mind and remind ourselves often that this is what we are about and what we are trying to accomplish.

**Section Mission**

Inspire – Enable – Empower and Engage Members of IEEE at the local level.

For the purpose of:

- Fulfilling the mission of IEEE (...**foster technological innovation and excellence for the benefit of humanity.**)
- Enhancing the members' growth and development throughout their life cycle
- Providing a professional home

**Section Goals**

- Increase member engagement,
- Improve relationships with and among members,
- Increase operational efficiency and effectiveness, within the section and its interfaces,
- Enhance collaboration – serve as the local face of IEEE to the community,
- Increase membership,
- Ensure the collection of appropriate information necessary to assist the IEEE to become a data driven organization.

It is now the task of the Section leadership to guide and coach all Section officers and elements to focus their activities on achieving those goals.

**SEM Monthly Meetings****Scheduled Meetings:**

The regular meetings of the SEM 'Leadership' (Executive Committee) are scheduled well in advance to allow everyone to place them in their personal planning calendars, and then defend those dates against encroachment. (*Not always possible.*)

Two types of Monthly meetings are normally scheduled:

**Monthly Teleconference / WebEx** as well as:

**Quarterly Face-to-Face.** (See Below)

**Note: All IEEE meetings are 'Open' for all members to attend.**

The only caveat is that you please register using the specific meeting form on found on the vTools site at:

<https://meetings.vtools.ieee.org/main>

This will ensure we have sufficient space, refreshments and support for everyone who joins the meetings.

**Teleconference Schedule**

(held from 12-1 PM):

- **March 5, 2015**
- May 6, 2015
- June 4, 2015
- August 5, 2015
- September 3, 2015
- November 5, 2015
- December 2, 2015

**F2F Meeting Schedule:**

- **April 8, 2015**
- July 9, 2015
- October 7, 2015
- January 7, 2016

More information for the f2f meetings will be sent out as the dates are approached. Keep in touch via the SEM Web site (<http://sites.ieee.org/sem/>) or use the links to the SEM Facebook or LinkedIn pages on the SEM Web page.

All the normally scheduled meetings of each of the other section chapters, affinity groups etc. are listed each

month in the vTools area of our SEM website at:

[http://ewh.ieee.org/r4/se\\_michigan/calendar1.php](http://ewh.ieee.org/r4/se_michigan/calendar1.php)

These announcements refer to:

**Standing Committee Meetings:**

**Affinity Group Meetings:**

**Technical Chapter Meetings:**

**University Student Branch Meetings:**

**Calendar Schedule:**

Meetings are also announced on the SEM Web page Calendar

<http://sites.ieee.org/sem/>

(Select the "SEM Calendar" button in the top row.)

**Note:** Often meetings of the 'Executive Committees' of Chapters and Affinity Groups (and standing committees, of course) are listed only in the 'SEM Calendar' page, since it is felt that most members would not wish to sit through the 'administrative' meetings. However, if this type of meeting is just your 'cup of tea', then contact the officers of the unit that is conducting the meeting, and ask to be 'linked' into their teleconference, SKYPE, Google Hangout, or WebEx meeting. They would be happy to have you as a participant.

Many volunteers get interested in Section activities when they get a chance to attend a Monthly meeting and 'peek under the hood' to find out how the machinery of the Section actually runs. It can be a rewarding experience.

**David Mindham**

SEM Section Secretary.

[dmindham@ieee.org](mailto:dmindham@ieee.org)

-30-



**Editors Corner**

Previous editions in this series may be found on the IEEE SEM Web page at: <http://sites.ieee.org/sem/>. Click on the "Wavelengths" button in the top row of selections.

Comments and suggestions may be sent to the editor at [k.williams@ieee.org](mailto:k.williams@ieee.org). We also recommend a cc to the Chair of the Communications and Marketing Committee, **Chaitanya Setti** at: [chaitanyagini@ieee.org](mailto:chaitanyagini@ieee.org).

The newsletter does not have a staff of reporters to 'investigate' what is going on in the Section and write up informative articles.

We rely on our Officers and Members to provide the 'copy' that we finally present to our readers as the newsletter.

The **Wavelengths Focus Plan and Personal Profiles** plan shown in the matrix below is conceived as a method to ensure a reasonable coverage of normally expected Section activities and events.

We try to finish each issue assembly by the week before the first of each month to allow time for review and corrections. If you have an article or notice, please try to get it to us on time or early if possible.

The plan below relies on the contributions of our members and officers, so please do not be shy. If you have something that should be shared with the rest of the Section, we want to give you that opportunity.

**Co-Editors:**

I am selfishly looking for members interested in helping to edit the newsletter along with me who can learn the process, share in the duties, and help keep the newsletter alive and lively by providing alternative points of view.

If you feel you might be that person, or would like to train to become that person, please let me know.

[k.williams@ieee.org](mailto:k.williams@ieee.org)

-30-

**Wavelengths Focus Plan:**

Month	AG's	Ch's	Ch's	SB's	Specal Notice	Reporting Events	Monthly Focus	Awards
Jan		1		U/D-M	Future Cities Judges	Election Results	Resolutions	
Feb	Cons	2		MSU	Science Fair Judges	Officer's Welcome	Surviving Winter	Future Cities
Mar		3	13	U/M-AA	Spring Conf. Flyer	Spring Conference	Spring Conference	Science Fair
Apr		4		WSU	National Engrs Wk.	Future Cities	Chapter Focus	GOLD Award
May	Life	5	14	LTU	Outstanding Eng Awd	Science Fair	Humanatarian	New Fellows
Jun		6		SCC	IEEE-USA Apmts.	ESD Banquett	Leadership Skills	SEM Awards
Jul		7	15	U/W	Nominations Call	MD-Webcasts	Students Issues	Region 4
Aug	WIE	8		OU	MGA - Apmts.	Tech-Webinars	Womens Issues	
Sep		9	16	EMU	Region 4 Apmts.	Engineers Day	Professional Skills	
Oct		10		ITT	Fall Conf. Flyer		Fall Conference	
Nov	YP	11	17	U/M-D	ELECTIONS!			
Dec		12			IEEE-Com Apmts.	Fall Conference	Happy Holidays	

**Wavelengths – Personal Profiles:**

Month	Profiles	Profiles	Committees
Jan	Chair	New Officers	
Feb	V-Chair	Secretary	Communications
Mar	Treasurer	Sect-Adviser	Conference
Apr	Stud-Rep		Education
May		Sr Officers	Executive
Jun			Finance
Jul			Membership
Aug			Nominations
Sep			PACE Activities
Oct			Student Activities
Nov			Technical Activities
Dec		Editor-WL	



## Web & Social Sites

### SEM Website

<http://sites.ieee.org/sem/>

Each of the sites below may be accessed through the SEM Website:

### Section Website Event Calendar

(Select the “SEM Calendar” button - top row.)

### SEM Facebook Page

(Select the “” button under the top row.)

### SEM LinkedIn Page

(Select the “” button under the top row.)

### SEM Officers:

For a complete listing of all - Section - Standing Committee - Affinity Group - Chapter and Student Branch Officers, see the SEM Officers Roster on the SEM web page under the “About SEM” button and select “Current Officers”.

### SEM On Line Community

<http://sem.oc.ieee.org>

## Section Officers

### Section Chair

Robert Neff

### Section Secretary

David Mindham

### Section Vice-Chair

Nicholas Langhals

### Section Treasurer

Praveen Kumar

### Section Adviser

Don Bramlett

### Chair Communications & Marketing

Ravi Nigam

### Chair Conferences

Raju Brahmandhabheri

### Chair Educational Activities

Chaomin Luo

### Chair Finance

Basil Sherlund

### Chair Membership

Mohamad Berri

### Chair Nominations

Kimball Williams

### Chair Professional Activities

Basil Sherlund

### Chair Student Activities

Nevrus Kaja

### Student Representative

Samer Koda

### Chair Technical Activities

Ali Eydgahi

### Past Section Chair

Imad Makki



IEEE Southeastern Michigan

Visit Us on the Web at:  
<http://sites.ieee.org/sem>



### Leadership Meetings

All IEEE members are welcome to join us at any regularly scheduled meeting:

#### Advertising Rates

SEM Website & Newsletter  
Advertising Rates / Month:

Our readers specify & purchase a wide range of electronic components, equipment and services.

Our sponsors come from industry, education, and nonprofit organizations.

**Full page \$500,**

**Half page \$250**

**Quarter page \$125,**

**Eighth page \$65.**

#### SEM Executive Committee Monthly Teleconferences:

- 1<sup>st</sup> Wednesday or Thursday of Each Month @ Noon
- Check the Section Web Calendar at:  
<http://sites.ieee.org/sem/>  
(Select the “SEM Calendar” button in the top row.)

#### SEM Executive Committee Face-to-Face Meetings:

- 1/Qtr. Usually held at U/M-D Fairlane Center
- Registration at:  
<https://meetings.vtools.ieee.org/main>

#### SEM Standing Committee Meetings:

#### SEM Affinity Group Meetings:

#### SEM Technical Chapter Meetings:

#### SEM University Student Branch Meetings:

- Meeting schedules are announced on SEM Web Calendar  
<http://sites.ieee.org/sem/>  
(Select the “SEM Calendar” button in the top row.)
- Registration for all at:  
<https://meetings.vtools.ieee.org/main>