



Volume 55 – Issue 1  
January 2015

## Contents

Section Chair's Message	1
Future Cities Judges:	2
2014 Election Results:	2
Electricity Instructors:	3
Consultant Affinity Group Meeting:	4
Amateur Radio License Classes:	5
2015 Officers	6
Other' Coming Events	7
Amateur Radio Classes	8
SMART Detroit Mentors:	9
World Robot Olympiad:	10
Executive Committee	11
Section Mission & Goals	12
SEM Monthly Meetings	12
Editors Corner	13
Section Officers	14
Web & Social Sites	14
Leadership Meetings	15
Advertising Rates	15

Wavelengths Newsletter is produced by IEEE volunteers and published by IEEE Southeastern Michigan (SEM) Section (<http://sites.ieee.org/sem>) for the section members.

Newsletter website Archive:  
<http://sites.ieee.org/sem/about-sem/sem-history/wavelengths-magazine-archive/>  
Email: [wavelengths@ieee-sem.org](mailto:wavelengths@ieee-sem.org)

# Wavelengths

## Section Chair's Message

I appreciate your support and look forward to serving as your section chair for the upcoming year. Please let me know of your suggestions, concerns, criticisms and compliments. I need feedback so I can understand what is working well and what needs improvement.

The IEEE SEM Spring Conference Organizing Committee is planning our spring event for April 28th at the University of Michigan, Fairlane Center North in Dearborn. Please watch our section web site for updates. All chapters are requested to provide speakers or co-sponsor speakers so there is chapter participation in the conference. A current listing of the conference program may be viewed by clicking on "Spring Conference" in the left column of the home page at <http://sites.ieee.org/sem/>

Chapters and affinity groups are planning educational meetings that are open to members and guests. In some cases there is a small registration fee to offset costs but in other cases the meetings are free. You can easily request to be on an e-mailing list from a chapter of interest by contacting the chapter chair.

Watch for announcements on the home page or click on the "Chapters" tab at the top of the home page; select a chapter of interest listed in the column labeled



"SEM Chapters" to view the activities of the chapter.

The IEEE's tag line on [www.ieee.org](http://www.ieee.org) that appears under the IEEE logo is "**Advancing Technology for Humanity**". It's my belief that we, as electrical and electronic engineers, have a responsibility to improve the lives of all humans. "**Peace on Earth, Goodwill to All**" is a good way to look at your engineering efforts. We will all leave a legacy of designs, projects, education and mentoring. May we be proud of what we leave behind this year?

### Happy New Year!

I look forward to hearing from you and seeing you at our events. As always, your ideas and suggestions are encouraged and welcomed.

**Robert Neff**  
IEEE SEM Section Chair  
[RLNeff1@gmail.com](mailto:RLNeff1@gmail.com)

**Future Cities Judges:****IEEE-SEM SECTION SPECIAL AWARD JUDGES NEEDED FOR JANUARY 2015 FUTURE CITY COMPETITION**

by Don C. Bramlett, PE,  
SMIEEE - IEEE/SEM Advisor

This is the fifteenth year that IEEE-SEM will provide a dedicated team of judges and a special professional organization award for the project having the most innovative application of electro-technology in the design of a city in the future. Judging for the 2015 Michigan Regional Future City Competition will be on Monday, January 26, 2015 at the Suburban Collection Showplace in Novi, just off I-96 on Grand River between Novi Road and Beck Road.

Orientation and breakfast for judges will start at 7:30 am. Judging will be from 9:00 AM to 11:00 AM, followed by lunch.

A complimentary continental breakfast and lunch are provided that day for the judges. This pleasurable and fulfilling task only takes half a day.

This is one of the premier pre-university programs for energized middle school students. Please volunteer to be among those to comprise the team of IEEE-SEM Section special award judges.

I encourage anyone who has an interest in the science and math education of our youth or an interest in pre-university education programs to consider being a judge at the Michigan Regional Future City Competition. IEEE Student Branch members as well as regular IEEE members have found this to be a fulfilling experience in past years. As a judge myself in previous years, I have found the experience of talking with the students, finding out their interests and observing their projects/presentations to be very rewarding.

So come out and spend the morning with us as we meet with some of the potential engineers, scientists, architects and city planners of the future.

If interested in more information concerning being a member of the team of judges for the IEEE-SEM professional award at the Michigan Regional Future City Competition, contact:

**Don Bramlett** at  
(313) 235-7549 during normal  
weekday business hours, at my cell  
(313) 608-6223, or at home  
(734) 591-1452 or by email  
[d.bramlett@ieee.org](mailto:d.bramlett@ieee.org) .

**2014 Election Results:**

The election this year was the smoothest I have seen. The new vTools election software was able to 'pull' the proper voters from the SAMIEEE database directly, eliminating what had taken many hours in the past.

The results for our Section level officers elections are:

**Section Chair**

Robert Neff

**Section Secretary**

David Mindham

**Section Vice-Chair**

Nicholas Langhals

**Section Treasurer**

Praveen Kumar

At the December 3 Noon Teleconference we decided to do the final 'approval' of the Section election results by an electronic vote of the assembled members of the Executive Committee. The election results were unanimously validated.

The first meeting of the 2015 officers will take place in January:

Contact David Mindham by e-mail at: [dmindham@ieee.org](mailto:dmindham@ieee.org) for the meeting details.

*See more about the 2014 election on page 6.*

**Electricity Instructors:**

Beginning January 12 and alternative every other Monday evening at 7 PM, IEEE SEM volunteers are planning a series of "Fundamentals of Electricity" classes for young students, Grades 3, 4 & 5. These classes will be taught at the **Dearborn Heights Caroline Kennedy Library at 24590 George St, Dearborn Heights, MI 48127.**

**Fundamentals of Electricity Workshops**

Monday, January 12 - Basics of Static Electricity

Monday, January 26 - Direct Current and Batteries

7:00 pm

These hands-on workshops by IEEE engineers are for children in grades 3

- 5. Workshops will continue twice a month until May.



Each class will request students to review an 'on-line' introduction to the material to be covered at each lesson in order to support an initial 'review' of the materials high points and provide for a Q&A session. Then the "Hands on" portion of the event will conduct 'experiments' to demonstrate the theory and give the students a 'feel' for what the theory really means.

In order to support a reasonable class, we are seeking at least 1 instructor for each 4 students. Our intention is to hold a class size of no more than 20 to 24 students, for which we need to identify 5 to 6 instructors.

If you live or work near Dearborn Heights, and can devote some time on you Mondays in January – May (see the detailed schedule below) please contact **Kimball Williams** at [k.williams@ieee.org](mailto:k.williams@ieee.org) and let us know of your availability.

## FUNDAMENTALS OF ELECTRICITY

**For Kids in Grades 3. 4. & 5**

Caroline Kennedy Library

**2<sup>nd</sup> & 4<sup>th</sup> Monday Evenings**

**January 12 – May 11**

**7 PM**

These are hands-on workshops about electricity and electronics for children. Engineers from the IEEE will be working with small groups. There are 9 sessions planned. Details are available from the library.

Due to the nature of the topics and the need for group compatibility, these free workshops are limited to children in grades 3, 4, & 5.

**January 12, 2015 (Basics of Static Electricity)**

**January 26, 2015 (Direct Current and Batteries)**

**February 9, 2015 (Direct Current circuits and components)**

**February 23, 2015 (Permanent Magnetics and magnetic fields)**

**March 9, 2015 (Electromagnetics and magnetic forces)**

**March 23, 2015 (Frequency, Alternative Current and Electrical Safety)**

**April 13, 2015 (Radio Frequency and Crystal radios)**

**April 27, 2015 (Resonance and resonant circuits)**

**May 11, 2015 (Radio Astronomy)**



Consultant Affinity Group Meeting:



# Doing Business with the Government

**The IEEE Consultants Network Presents, "Doing Business with the Government" by Sue Schweim Tellier**

**6:00 PM Wednesday, January 28, 2015**

[https://meetings.vtools.ieee.org/meeting\\_registration/register/31119](https://meetings.vtools.ieee.org/meeting_registration/register/31119)

Bastone Brewery  
419 South Main St.  
Royal Oak, MI 48067

<http://bastone.net/br/bastone-brewery>

**Sue Schweim Tellier** owns JetCo Solutions, which serves as the embedded government sales and marketing division for small to medium sized companies. A specialist in proposal management and B2G marketing, Sue works with clients to effectively identify their marketing discriminators, develop capture related win themes and carry these themes into winning proposals.



Amateur Radio License Classes:

## Amateur Radio License Classes (Ham Radio)



Monday Evenings at Caroline Kennedy Library  
6:30 pm until 8:30 pm  
March 2, March 16, March 30, April 6, and April 20.

These free classes are offered by the *Motor City Radio Club* and will help teens and adults who wish to prepare for the Amateur Radio License Examination.

On May 9 all students are invited to take the MCRC bi-monthly License Examinations in Taylor, MI. (The license examination fee is \$15.00 paid at the exam site on the day of the exam.)

We will be using *The No-Nonsense Technician Class License Study Guide* by Dan Romanchic.

It is a free download of 58 pages in PDF format available at [www.kb6nu.com](http://www.kb6nu.com). Printed copies will be available at cost of \$6.00.

The ARRL license guide can also be purchased from the instructor at a cost of \$22.50.

**REGISTRATION IS REQUIRED,**

Stop at the Library Circulation Desk or call (313) 791-3802

**2015 Officers****Election Status:**

After the December 3 .SEM Executive Committee teleconference the ExCom initiated an electronic 'Validation Vote' of the election results. A PDF file of the elected officers in a draft 'Roster' format was sent, along with a link to a vTools 'Survey' vote site and a request for all SEM Officers to give us 'validation' of the results before we officially 'register' changes with the IEEE and publish the full list to the Section at large. All votes were 'For' the 'Motion to Approve' the results.

Changes in the officer assignments were logged into the vTools site on December 25.

'This was a Merry Christmas' present for all our newly elected officers.

**Follow Up Actions:**

The election process for 2014 has run its course and we are busy tallying all the results and looking for volunteers to 'fill the gaps'.

Not only after the election but, throughout the year, we encounter situations where life changes force a re-evaluation of our volunteer's commitments. Jobs and employers change directions, overseas assignments take place more frequently in our 'international' business climate, and families have new arrivals and deaths.

As changes occur, the Nominations and Appointments Committee continues to search for replacement volunteers to help keep the machinery of governance of the Section moving along.

It should be noted that we often 'elect' and/or 'appoint' more than one "Vice-Chair" to an Affinity Group or Chapter to handle the multitude of activities in which a busy organization becomes involved. This is especially true of our "Joint" Chapters where more than one technical society makes up the Chapter. In this case, we recommend that there be one Vice-Chair for each constitute Society in the Chapter.

**Nominations & Appointments:**

If you would like to work with us to continue finding officer candidates and bringing them 'on board', please contact the Chair of the N&A Committee and let us know of your interest.

We look forward to hearing from you soon.

[k.williams@ieee.org](mailto:k.williams@ieee.org)  
N&ACom Chair.

-30-



**Other' Coming Events**

We always try to publish IEEE events in several places to ensure that everyone who may want to attend has all the available relevant information.

**SEM Web Calendar:**

<http://sites.ieee.org/sem/>

Select '*SEM Calendar*' button in the website top row.

**SEM Web Meetings:**

<http://sites.ieee.org/sem/>

Select '*SEM Meeting List*' in the

**vTools Meetings:**

<http://sites.ieee.org/vtools/>

Select '*Schedule a Meeting*' from the left hand column of buttons.

**Other 'Happenings':**

However, since IEEE members tend to have .eclectic interests, we want to give everyone a 'heads up' for some of the non-IEEE events that we feel may be of interest.

What follows are not IEEE sponsored events but, may prove of interest to many of our members. For example, on the following page we announce three locations for classes to help you earn your Amateur Radio License. Many Electrical Engineers began their

early interest in electronics through Amateur Radio, and we have seen a number pursue this activity later in life when their career decisions have settled down.

If you have a special interest in a field that encourages technical study and learning, and wish to share opportunities for participation with the rest of the Section membership, let us know event particulars, and we will do what we can to 'spread the word'.

\*\*\*\*\*

**Links:**

Below are a few internet links to local SEM Clubs engaged in technical hobbies or links to sites that will let you locate clubs close to you.

**Amateur Radio Clubs in South East Michigan**

(This is a fairly comprehensive listing of all the 'Ham' clubs in SEM.)

<http://www.wa2hom.org/ham-radio-clubs-in-se-michigan/>

**Model RC Aircraft:**

<http://www.skymasters.org/>

**Model Rocketry:**

<http://team1.org/>

**Astronomy:**

<http://www.go-astronomy.com/astro-clubs-state.php?State=MI>

**Experimental Aircraft Association:**

<https://www.eaa.org/en/eaal/eaal-chapters/find-an-eea-chapter>

**Robots:**

<http://therobotgarage.com/about-us.aspx>

**Science Fiction Convention:**

(Dearborn, Jan 16-18)

<http://confusionsf.org/>

**Mad Science:**

<http://www.madscience.org/>

**ESD PE Review Class:**

[www.esd.org](http://www.esd.org)

-30-

## Amateur Radio Classes

### Ann Arbor 'One-Day' Technician Class:

**One-Day Technician License Class** - Saturday, January 17, 2015  
at the Ann Arbor Hands-On Museum, 221 E. Ann St., Ann Arbor, MI.

The class starts at 9:00 am and runs until 3:30 pm, at which time students are given the test.

Pre-registration is required, and there is a \$10 fee to take the class, but the fee will be waived for anyone under 18.

Students can reserve a spot by sending a check or money order to:

**Dan Romanchik, KB6NU**

**1325 Orkney Drive**

**Ann Arbor, MI 48103.** Or: pay by sending money via PayPal to [cwgeek@kb6nu.com](mailto:cwgeek@kb6nu.com).

Students should download the study guide IMMEDIATELY, (<http://www.kb6nu.com/study-guides/>), read through it a couple of times, and take some online practice tests (URLs for practice test websites can be found in the study guide) before coming to class. Studying beforehand greatly increase the chances that they will pass the test.

Students can e-mail Dan, KB6NU at [cwgeek@kb6nu.com](mailto:cwgeek@kb6nu.com) or phone him at [734-930-6564](tel:734-930-6564) with any questions.

### Southfield Classes – All License Grades:

The General and Extra Class amateur radio license classes:

Mondays, January 12, 2015 to May 4, 2015—7pm to 9 pm

The Technician Class amateur radio license

Mondays, February 9, 2015 to April 27, 2015—7pm to 9 pm

**Lawrence Technological University**

**21000 West ten mile rd.**

**Southfield, MI 48075**

**Engineering building E-200**

#### Costs:

*Instruction is free / License manual is \$25, available from the instructor / FCC exam fee (at final session): \$15*

*\*\*\*limited room! **Pre-registration is necessary**, by December 29\*\*\**

*Instructor: Ron Miotke, wd8mnx ([Hazel Park Amateur Radio Club](#))*

*Contact: Jerry Begel, HPARC Education Coordinator. [W9npi@arrl.net](mailto:W9npi@arrl.net)*

### Dearborn & Dearborn Heights Technician Classes:

Monday Evenings at Caroline Kennedy Library 6:30 pm until 8:30 pm

March 2 / March 16 / March 30 / April 6, and April 20.

These free classes are offered by the [Motor City Radio Club](#) and will help teens and adults who wish to prepare for the Technician Amateur Radio License Examination.

**Caroline Kennedy Library**

**24950 George Street**

**Dearborn Heights, MI 48127**

**Phone: 313-791-3800**

**[Web dhcl.michlibrary.org](http://www.dhcl.michlibrary.org)**

On May 9 all students are invited to take the MCRC bi-monthly License Examinations in Taylor, MI. (The license examination fee is \$15.00 paid at the exam site on the day of the exam.)

We will be using **The No-Nonsense Technician Class License Study Guide** by Dan Romanchic.

It is a free download of 58 pages in PDF format available at [www.kb6nu.com](http://www.kb6nu.com). Printed copies will be available at cost of \$6.00.

The ARRL license guide can also be purchased from the instructor at a cost of \$22.50.

**REGISTRATION IS REQUIRED,**

Stop at the Library Circulation Desk or call (313) 791-3802



## SMArT Detroit Mentors:

### Inspire High School Students: Become a Mentor for The Engineering Society of Detroit (ESD) Engineering SMArT Michigan Program

#### **What is Engineering SMArT Michigan?**

ESD's Engineering SMArT Michigan program is a rigorous, hands-on science, math, architecture and technology (SMArT) project in which high school students design energy-efficient homes.

Through a series of learning modules, students will be introduced to the basics of energy, alternative energies, and the energy grid, in an atmosphere of fun activities and team building. They will apply these concepts to create real-life solutions by working in teams to design a house. The culmination of the program is a presentation of their team-designed house at a competition between all participating schools where they will vie for scholarships and other prizes.

#### **What role do mentors play?**

Volunteer mentors are a critical element to the success of the program and are needed to help teach and coach in the classroom. There are two groups of mentors - Energy Module and Presentation Module.

#### **What is the time commitment for a mentor?**

The 15 week program gets underway in late January and finishes up in late May at the competition. Energy Module mentors are asked to teach a minimum of one class period per week for two weeks. Presentation Module mentors are assigned to a school and asked to teach a minimum of one class period per week for eight weeks. Efforts will be made to schedule multiple Presentation Module mentors at each school in order to ensure at least one mentor is in the classroom each week. Mentors can volunteer for one or more schools.

#### **Interested in mentoring?**

For more information on mentoring or to volunteer, contact Jasmine Sisson, PE, at [sisson@pbworld.com](mailto:sisson@pbworld.com).

## World Robot Olympiad:

### IEEE SEM Members selected teams to represent U.S. in World Robot Olympiad



Lawrence Tech in Southfield hosted the first **WRO USA National Championship** on September 27, 2014 to select teams to represent the USA in Robot Olympic in Sochi, Russia.

About 85 students from California, Illinois, New York and Michigan participated in the competition.

In the open category, the task is to design and create robots that will assist humankind in solving tasks in space.

Selected Open category High school team was RoboCrusiers S from Canton & Northville.

Open Category Elementary winners were RoboCrusiers E from Northville & Canton and The Martians from Westland.

IEEE Open category Judges were Dr. Gaurav Pandey, Dr. G. Edzko Smid, Dr. Stan Baek, Dr. Kun Hua (LTU IEEE Branch advisor), and Dr. Philip Olivier.

The event was organized by Dr. CJ Chung, IEEE SEM Robotics and Automation Chapter treasurer. Dr. Javier Alcazar, IEEE SEM Chapter 14 Robotics and Automation Chair recruited IEEE members as Judges for the event.

IEEE sponsored LTU Robofest led by CJ Chung has been named the USA national organizer for the World Robot Olympiad association that draws nearly 20,000 teams from 49 countries.

**Executive Committee**

The **SEM Executive Committee** is the primary coordination unit for Southeastern Michigan (SEM) IEEE operations. The basic organization chart below shows the 2015 arrangement of communications links designed to provide inter-unit coordination and collaboration.

The SEM Executive Committee meets in a teleconference each month on either the first Wednesday or first Thursday at Noon. The specific meeting days, times, phone or WebEx numbers and log in codes are published on the IEEE SEM Website calendar: <http://sites.ieee.org/sem/> Click on the 'Calendar' button in the top banner on the Website first page.

If you wish to attend, or just monitor the discussions, please contact David Mindham, the Section Secretary at:

[dmindham@ieee.org](mailto:dmindham@ieee.org) and request to be put on the distribution list for a monthly copy of the agenda and minutes.

More meeting details are available on the next page of this newsletter.

**Other Meetings:**  
Most of our members maintain memberships in one or more of the IEEE Technical Societies, which automatically makes them members of the local Chapter which is affiliated with that Society. As a result, they should receive notices of those meetings each month.

However, most of our members are not 2-dimensional beings, with only one focused interest. That means that they would likely find meetings of the other Chapters also of interest. In order to communicate those options to our members and facilitate their attendance we ask each of our

Chapters to send their meeting information to our Webmasters who post the meeting information on the Website Calendar.

More detailed information on meetings may be found by using the IEEE meetings site. This may be found through the IEEE SEM Website: <http://sites.ieee.org/sem/> and clicking on the **SEM meetings list** button near the bottom of the left hand banner.

You may also set up automatic e-mail notifications of web updates by using the **"Email Notifications"** button at the top of the **SEM Tools/Links** side banner.

**David Mindham - SEM Secretary**

-30-

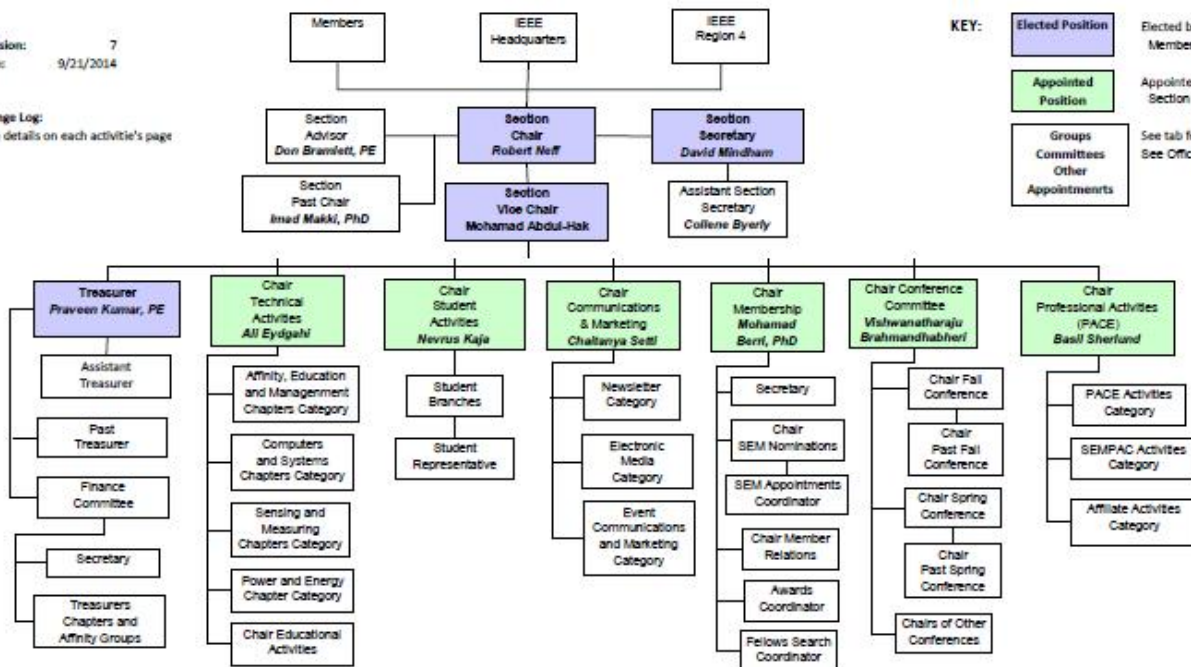
**2014 Organization - IEEE Southeastern Michigan Section (SEM)**

Revision: 7  
Date: 9/21/2014

Change Log:  
See details on each activity's page

**KEY:**

- Elected Position Elected by Section Membership
- Appointed Position Appointed by Section Chair
- Groups  
Committees  
Other  
Appointments See tab for details  
See Officers Roster





**Section Mission & Goals****Section Focus:**

The IEEE SEM Senior Officers of the Section have reaffirmed the overall Mission and Goals of the Section, which align with the overall objectives of IEEE worldwide and with the guidance provided by our leadership in Region 4.

You have probably seen the Mission and Goals before. However, it is important to keep these clearly in mind and remind ourselves often that this is what we are about and what we are trying to accomplish.

**Section Mission**

Inspire – Enable – Empower and Engage Members of IEEE at the local level.

For the purpose of:

- Fulfilling the mission of IEEE (...**foster technological innovation and excellence for the benefit of humanity.**)
- Enhancing the members' growth and development throughout their life cycle
- Providing a professional home

**Section Goals**

- Increase member engagement,
- Improve relationships with and among members,
- Increase operational efficiency and effectiveness, within the section and its interfaces,
- Enhance collaboration – serve as the local face of IEEE to the community,
- Increase membership,
- Ensure the collection of appropriate information necessary to assist the IEEE to become a data driven organization.

It is now the task of the Section leadership to guide and coach all Section officers and elements to focus their activities on achieving those goals.

--30--

**SEM Monthly Meetings****Scheduled Meetings:**

The regular meetings of the SEM 'Leadership' (Executive Committee) are scheduled well in advance to allow everyone to place them in their personal planning calendars, and then defend those dates against encroachment. (*Not always possible.*)

Two types of Monthly meetings are normally scheduled:

**Monthly Teleconference / WebEx** as well as:

**Quarterly Face-to-Face.** (See Below)

**Note: All IEEE meetings are 'Open' for all members to attend.**

The only caveat is that you please register using the specific meeting form found at:

<https://meetings.vtools.ieee.org/main>

This will ensure we have sufficient space, refreshments and support for everyone who joins the meetings.

**Teleconference Schedule (held from 12-1 PM):**

- 2015 Teleconferences TBD

**F2F Meeting Schedule:**

- 2015 meetings TBD

More information for the f2f meetings will be sent out as the dates are approached. Keep in touch via the SEM Web site (<http://sites.ieee.org/sem/>) or use the links to the SEM Facebook or LinkedIn pages on the SEM Web page.

**vTools Schedule:**

All the normally scheduled meetings of each of the other Section 'units' are listed each month in the vTools area of our SEM website at:

[http://ewh.ieee.org/r4/se\\_michigan/calendar1.php](http://ewh.ieee.org/r4/se_michigan/calendar1.php)

These announcements refer to:

**Standing Committee Meetings:**

**Affinity Group Meetings:**

**Technical Chapter Meetings:**

**University Student Branch Meetings:**

**Calendar Schedule:**

Meetings are also announced on the SEM Web page Calendar

<http://sites.ieee.org/sem/>

(Select the "SEM Calendar" button in the top row.)

**Note:** Often meetings of the 'Executive Committees' of Chapters and Affinity Groups (and standing committees, of course) are listed only in the 'SEM Calendar' page, since it is felt that most members would not wish to sit through the 'administrative' meetings. However, if this type of meeting is just your 'cup of tea', then contact the officers of the unit that is conducting the meeting, and ask to be 'linked' into their teleconference, SKYPE, Google Hangout, or WebEx meeting. They would be happy to have you as a participant.

Many volunteers get interested in Section activities when they get a chance to attend a Monthly meeting and 'peek under the hood' to find out how the machinery of the Section actually runs. It can be a rewarding experience.

**David Mindham**

SEM Section Secretary.

[dmindham@ieee.org](mailto:dmindham@ieee.org)

-30-

**Editors Corner**

This is the 1<sup>st</sup> 2015 issue of the Wavelengths newsletter.

Earlier editions in this series may be found on the IEEE SEM Web page at: <http://sites.ieee.org/sem/>. Click on the "Wavelengths" button in the top row of selections.

Comments and suggestions may be sent to the editor at [k.williams@ieee.org](mailto:k.williams@ieee.org). We also recommend a cc to the Chair of the Communications and Marketing Committee, **Chaitanya Setti** at: [chaitanyagini@ieee.org](mailto:chaitanyagini@ieee.org).

The newsletter does not have a staff of reporters to 'investigate' what is going on in the Section and write up informative articles.

We rely on our Officers and Members to provide the 'copy' that we finally present to our readers as the newsletter.

**Wavelengths – Focus Plan:**

Month	AG's	Ch's	Ch's	SB's	Special Notice	Reporting Events	Monthly Focus	Awards
Jan		1		U/D-M	Future Cities Judges	Election Results	Resolutions	
Feb	Cons	2		MSU	Science Fair Judges	Officer's Welcome	Surviving Winter	Future Cities
Mar		3	13	U/M-AA	Spring Conf. Flyer	Spring Conference	Spring Conference	Science Fair
Apr		4		WSU	National Engrs Wk.	Future Cities	Chapter Focus	GOLD Award
May	Life	5	14	LTU	Outstanding Eng Awd	Science Fair	Humanitarian	New Fellows
Jun		6		SCC	IEEE-USA Apmts.	ESD Banquett	Leadership Skills	SEM Awards
Jul		7	15	U/W	Nominations Call	MD-Webcasts	Students Issues	Region 4
Aug	WIE	8		OU	MGA - Apmts.	Tech-Webinars	Womens Issues	
Sep		9	16	EMU	Region 4 Apmts.	Engineers Day	Professional Skills	
Oct		10		ITT	Fall Conf. Flyer		Fall Conference	
Nov	YP	11	17	U/M-D	ELECTIONS!			
Dec		12			IEEE-Com Apmts.	Fall Conference	Happy Holidays	

**Wavelengths – Personal Profiles:**

Month	Profiles	Profiles	Committees
Jan	Chair	New Officers	
Feb	V-Chair	Secretary	Communications
Mar	Treasurer	Sect-Adviser	Conference
Apr	Stud-Rep		Education
May		Sr Officers	Executive
Jun			Finance
Jul			Membership
Aug			Nominations
Sep			PACE Activities
Oct			Student Activities
Nov			Technical Activities
Dec		Editor-WL	

The **Wavelengths – Focus Plan and Personal Profiles** plan shown in the matrix below is conceived as a method to ensure a reasonable coverage of normally expected Section activities and events.

We try to finish each issue assembly by the week before the first of each month to allow time for review and corrections. If you have an article or notice, please try to get it to us on time or early if possible.

The plan below relies on the contributions of our members and officers, so please do not be shy. If you have something that should be shared with the rest of the Section, we want to give you that opportunity.

**Letter to the Editor:**

We would like to see "Letters to the Editor" as a regular column but, of course that means that someone must send an e-mail to the editor...[hint!](#)

**Co-Editors:**

I am selfishly looking for someone interested in helping to edit the newsletter along with me who can learn the process, share in the duties, and help keep the newsletter alive and lively by providing an alternative point of view.

If you feel you might be that person, or would like to train to become that person, please let me know.

[k.williams@ieee.org](mailto:k.williams@ieee.org)

-30-



## Web & Social Sites

SEM Website

<http://sites.ieee.org/sem/>

Each of the sites below may be accessed through the SEM Website:

Section Website Event Calendar  
(Select the “SEM Calendar” button - top row.)

SEM Facebook Page

(Select the “” button under the top row.)

SEM LinkedIn Page

(Select the “” button under the top row.)

SEM Officers:

For a complete listing of all - Section - Standing Committee - Affinity Group - Chapter and Student Branch **officers**, see the SEM Officers Roster on the SEM web page under the “About SEM” button and select “Current Officers”.

SEM On Line Community

<http://sem.oc.ieee.org>

## Section Officers

**Section Chair**  
Robert Neff

**Section Secretary**  
David Mindham

**Section Vice-Chair**  
Nicholas Langhals

**Section Treasurer**  
Praveen Kumar

**Section Adviser**  
Don Bramlett

**Chair Communications & Marketing**  
Ravi Nigam

**Chair Conferences**  
Raju Brahmandhabheri

**Chair Educational Activities**  
Chaomin Luo

**Chair Finance**  
Basil Sherlund

**Chair Membership**  
Mohamad Berri

**Chair Nominations**  
Kimball Williams

**Chair Professional Activities**  
Basil Sherlund

**Chair Student Activities**  
Nevrus Kaja

**Student Representative**  
Samer Koda

**Chair Technical Activities**  
Ali Eydgahi

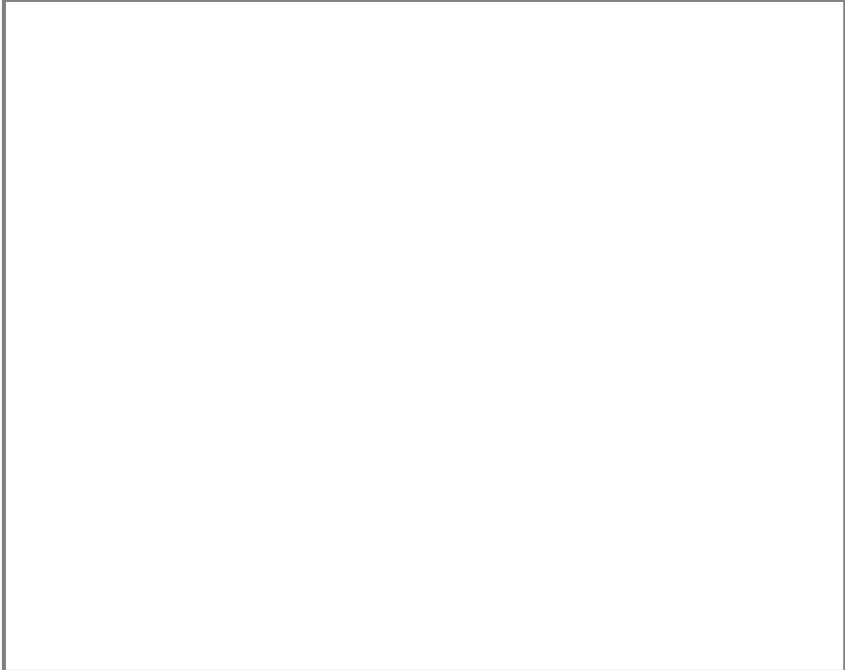
**Past Section Chair**  
Imad Makki





IEEE Southeastern Michigan

Visit Us on the Web at:  
<http://sites.ieee.org/sem>



### Leadership Meetings

All IEEE members are welcome to join us at any regularly scheduled meeting:

#### Advertising Rates

SEM Website & Newsletter  
Advertising Rates / Month:

Our readers specify & purchase a wide range of electronic components, equipment and services. Our sponsors come from industry, education, and nonprofit organizations.

Full page \$500,

Half page \$250

Quarter page \$125,

Eighth page \$65.

#### SEM Executive Committee Monthly Teleconferences:

- 1<sup>st</sup> Thursday of Each Month @ Noon
- Check the Section Web Calendar at:  
<http://sites.ieee.org/sem/>  
(Select the "SEM Calendar" button in the top row.)

#### SEM Executive Committee Face-to-Face Meetings:

- 1/Qtr. Usually held at U/M-D Fairlane Center
- Registration at:  
<https://meetings.vtools.ieee.org/main>

#### SEM Standing Committee Meetings:

#### SEM Affinity Group Meetings:

#### SEM Technical Chapter Meetings:

#### SEM University Student Branch Meetings:

- Meeting schedules are announced on SEM Web Calendar  
<http://sites.ieee.org/sem/>  
(Select the "SEM Calendar" button in the top row.)
- Registration for all at:  
<https://meetings.vtools.ieee.org/main>