



Volume 54 – Issue 03
March 2014

Contents

Section Chair's Message	1
Membership Renewal Time	2
Fall Section Conference	2
Section Volunteer Options:	3
Profile. Praveen Kumar	4
Profile. Don Bramlett	4
Leadership Workshop	5
Congressional Visits Day	6
Spring Section Conference	7
Perceptions:	8
Consultants Network Event	9
EMU Student Branch:	10
Executive Committee	12
Section Mission & Goals	13
SEM ExCom Meetings	13
Editors Corner	14
'ExCom' Officers	15
Web & Social Sites	15
Leadership Meetings	16
Advertising Rates	16

Wavelengths Newsletter is produced by IEEE volunteers and published by IEEE Southeastern Michigan (SEM) Section (<http://www.ieee-sem.org>) for the Section members.

*Newsletter website:
http://ewh.ieee.org/r4/se_michigan/newsletter
Email: wavelengths@ieee-sem.org*

Wavelengths

Section Chair's Message

It's just 2 months into my term as your chair and I feel like we already have so much activity going on. Just look through this newsletter to catch up on all of our Section activities. A great deal of this activity is due to our very active group leaders and their organizations.

The new section organization can be found on page 22 of the January 2014 Wavelengths and at the Section Home page (www.ieee-sem.org) under the "About SEM" tab and by clicking on "Current Officers" in the left column.

Spring Conference work is proceeding although the organizing team is behind our desired schedule. Look for updates very soon on our SEM web site (www.ieee-sem.org).

All active Chapters and Affinity Groups in SEM need to offer speakers for this Spring Conference to satisfy half of their IEEE required 2 educational events per year. Two events per year are required by IEEE for Chapters and Affinity Groups to remain active. If you do not have a speaker, ask to co-sponsor with another. Please contact the organizing committee who can be found on the current announcement by clicking on "Spring Conference" on the SEM Home page.

Selections have been made for our section ambassadors to the IEEE Sections Congress in Amsterdam. Funding for the trips are half from Region 4 and half from our Section. I asked for volunteers at the



January ExCom meeting, another good reason to attend, because a trip like this requires a large family and time commitment but provides an exceptional opportunity to interact with Sections and IEEE leadership from all over the world.

We have two people that have come forward requesting to go and they both have committed to attendance and to look into Section best practices regarding issues that we have here in SEM. There is no need for a vote on the matter because a third person has not come forward. Thank you to David Mindham, Section Secretary, and Praveen Kumar Setti, Section Treasurer and Professional Activities Chair, for volunteering to make this commitment. Their reports will be posted after they return.

If references to our SEM web site in this letter sound like I am encouraging you to visit the web site more often, you are correct. Please have a healthy, productive and enjoyable month.

Robert Neff

IEEE SEM Section Chair

RLNeff1@gmail.com

-30-

Membership Renewal Time

For those of us who intended to renew their IEEE membership when the option first opened in August but, have been too busy, **...that time has PAST!**

On February 21, 2014 your "Grace" period ran out, and if you have not renewed, your member benefits have begun to expire.

Every member has an IEEE Account that can be used to sign in to renew. If you do not know your username and/or password, you can recover it from the login page.

<https://www.ieee.org/Loginform/myIEEE/login.html>

Please do not create a new account, as it will not link to your membership or renewal bill.

Renew your IEEE Membership to continue developing your career, accessing essential networking opportunities, and receiving other exclusive IEEE benefits.

<http://www.ieee.org/go/renew>

--30--

"Other SEM Events"

Want to know what else is going on in our IEEE Section?

Open the IEEE SEM Web Page at:

<http://sites.ieee.org/sem/>

Look at the left side bar of buttons labeled: **SEM Tools/Links**

Click on **"SEM Meetings List"**

(2nd from the bottom of the list) and voila, you get a complete list of all the meetings scheduled in the IEEE vTools system!

Each event title is actually a "Live" link to the vTools meeting page, so you can click on the title and be whisked to the complete description!

What could be easier?

...

See you at the next meeting!

Fall Section Conference

IEEE Southeastern Michigan (SEM) Section welcomes interested members to lead and/or host the IEEE Southeastern Michigan Section 2014 Fall Conference.

This event is produced by the Southeastern Michigan Section with the intent to provide number of IEEE related opportunities.

Southeastern Michigan Section executive members will help the host to develop the technical program, speaker arrangements, arranging for posters, venue arrangements, marketing the event, managing registrations and publication of the Conference booklet.

Please take advantage of the hosting the 2014 Fall Conference which is a single place for wealth of intellectual and network resources.

Thank you for supporting the IEEE Southeastern Michigan Section.

Raju Brahmandhabheri,

bvraju212@yahoo.com

Chair, SEM Conference Committee

-30-

Section Volunteer Options:

Our SEM 'Standing Committees' are the 'engine' that drives your IEEE Section. Each committee goes through a regular 'Churn' as our officers gain the skills they learn through the experience of participating with senior experienced members in the activities of the committee and move on to other positions that allow them to develop other 'soft skills' and continue to grow and develop as a professional.

This process of learning new skills and then moving on to more responsible positions is one of the major benefits of active participation in an IEEE committee, at any level.

However the result is that the Nominations and Appointments Committee is always looking for volunteers interested in gaining the experience and training that can only come with operating as a committee member. This year is no exception to that rule.

Each of the following Committees is seeking volunteers to help with its tasks. Viewed from the position of a new volunteer, this is a rich source of training opportunities.

Section Communications & Marketing:	
<i>Chair - Comm. & Mktg</i>	Chaitanya Setti
Electronic Media Communications	
<i>Section Webmaster</i>	Scott Lytle
<i>Associate Webmaster</i>	Chaitanya Setti
<i>Section Social Media</i>	Weidong Xiang
<i>LinkedIn Page</i>	
<i>Facebook Page</i>	
<i>ListServ Operations</i>	
<i>OnLine-Community</i>	
Event Communications and Marketing	
<i>Sponsorships</i>	Rajeev Verma
<i>Event Publications</i>	Ravi Nigam
<i>Assistant Event Pub</i>	
<i>Media Relations</i>	
Print Media Communications	
<i>Newsletter Editor</i>	Kimball Williams
<i>Associate Editor</i>	
<i>Newsletter Consultant</i>	James Woodyard

"This process of learning new skills and then moving on to more responsible positions is one of the major benefits of active participation in an IEEE committee, at any level."

I encourage you to look at each of the committee positions in this section and consider how an experience with one of these committees can augment your professional abilities.

For particulars of the duties and time requirements for any position, contact the Chair of that committee.

A new addition to the Section is the Technical Activities committee which has taken over the tasks formally handled by the 'Operations Task Force'. Those duties were eventually realized to be critical to improvements in Section operations, and have now been formalized into a 'standing committee' with Ali Eydhahi leading the team.

Technical Activities:	
<i>Chair</i>	Ali Eydhahi
<i>AGs/Edu/Mgmt Ch.</i>	
<i>Cmputr & Sys Ch.</i>	
<i>Sensing & Msrmt Ch.</i>	
<i>Pwr & Enrgy Ch.</i>	

Each of the Yellow highlighted positions shown above represents an opportunity to engage directly with the leadership of several Affinity Groups or Chapters.

Each of these new officer positions will actively work with the Unit leadership as a mentor and coach to ensure effective functioning and reporting. In essence, they will serve as a 'coach' for the Unit officers. The breakdown of Units (Chapters and Affinity Groups) in each 'Group' is shown below:

Affinity Groups+ 10/13
1/3/5/ 7/14
4/6/8/ 11/17
2/7/9/12

Section Membership:	
<i>Chair</i>	Mohamad Berri
<i>Awards</i>	
<i>Info. Management</i>	
<i>Member Relations</i>	

The list above appears to be focused only on membership however; the primary skill set initially required here will be with internet communications.

The same comment applies to most the positions shown in the 'Communications and Marketing Committee' in the left hand column.

In fact, most of the operations and functions in any modern IEEE Committee involve a great deal of work through electronic communications in many forms. Improvements to operations often take the form of new software tools developed by the committee members in order to facilitate the operations.

Understanding what is needed to assist a committee to improve its performance often gives rise to new ways of doing the job, and this in turn gives opportunities for individual growth and development.

PACE Activities:	
<i>Chair - PACE</i>	Praveen Kumar
<i>PACE Event Coordinator</i>	
<i>Secretary</i>	Qasim Chaudhary
<i>ESD Liaison</i>	Kimball Williams
<i>Academic Relations</i>	Weidong Xiang
<i>Industrial Relations</i>	Randy Boone
<i>Government Relations</i>	

Secretaries are needed to work with the Education Committee and with the Nomination and Appointments Committee.

Interested in contributing as one of the members of a Standing Committee? Use the link below to indicate your interest, and the Nominations and Appointments Committee will contact you:

<https://ieee.fluidsurveys.com/s/sem>

Profile. Praveen Kumar

IEEE SEM 2014 Treasurer



Praveen K. Kumar, P.E., earned his bachelor's degree in Electrical Engineering from R.V. College of Engineering in Bangalore, India, and

a Master of Science in Electrical Engineering – Power Systems from Michigan Technological University (Michigan Tech). He holds diplomas in Astronomy and Astrophysics and Hybrid Vehicle Engineering, and has worked on hybrid automotive engineering projects with Volvo, General Motors, and the U.S. Department of Energy.

In his role as a high voltage protection engineer with the *EC&M Magazine*-ranked Top 40 Design Firm, Commonwealth Associates, Inc. (Jackson, MI), Praveen has worked extensively on system protection, with a special focus on transmission grid and substation protection for major utilities. His interests include renewable energy interconnections, smart grid, economic analysis, and market research. Praveen currently is pursuing a graduate certificate in Finance.

Plans for 2014:

As Section Treasurer, beyond generally keeping our finances in order and our records up-to-date, I have made commitments to three vital goals, namely promoting *financial transparency, sustainability, and professional development*. I want to see our members informed and empowered in terms of making decisions about the need and how best to support our section with their time, talent, and resources.

For that to occur, we need to provide increased financial transparency. As a steward of this section for current and future members, I want to keep us fiscally healthy. To that end, I will be

working with the Assistant Treasurer, Harry Hill, and the Finance Committee, to develop and follow a sound financial plan of growth.

Finally, speaking to our very *raison d'être*, I am committed to professional development and will assist any chapter or affinity group seeking to secure funding from the region and respective society to conduct workshops or seminars. Training will be an on-going activity during my final term as Section Treasurer.

As Chair of PACE, I will be conducting a minimum of two workshops this year to benefit all IEEE members, including students. A special focus will be on helping new graduates transitioning into the industry. My goal is that these events also will help members to earn required CEUs, now that Michigan has enacted the CEU requirements for Professional Engineers to keep their title. I will be communicating and coordinating with other committees to ensure event success.

Profile. Don Bramlett

IEEE SEM Section Adviser



DON C. BRAMLETT, PE, SMIEEE, FESD, FMSPE

Don Bramlett received his BSEE and MBA from the University of Detroit. He is a registered Professional Engineer.

Don has spent his entire 40 year professional engineering career in the energy industry, 6 years in the natural gas industry, and then 34 years in the power generation segment of the electric utility industry.

He is a Senior Project Engineer in Fossil Generation with the Detroit Electric Company, a major subsidiary of DTE Energy, where he has overall responsibility for large capital projects at various power plants.

Don is an active volunteer with IEEE. He served as IEEE Region 4 Director and a member of the IEEE Board of Directors in 2009 and 2010. He was Secretary – Treasurer of IEEE-USA in 2011 and 2012. He is presently Treasurer of the IEEE Member & Geographic Activities (MGA) Board in 2013 and 2014. He volunteers in an advisory capacity with both IEEE Region 4 and the IEEE-SEM Section.

Don has also been an active volunteer with the Engineering Society of Detroit (ESD), and the Michigan Society of Professional Engineers (MSPE). He is a Fellow of ESD and MSPE. He has been involved as a leader at the troop and district level with the Boy Scouts of America, and as a member of various boards at his church.

Future of the IEEE-SEM Section: IEEE is the largest member based technical/professional society in the world. Its success depends on the active involvement of its members and the leadership of its volunteers. IEEE has many potential benefits to its members, based on the needs of individual members. Want to see the local IEEE-SEM Section to be successful in addressing the needs of local members by offering a full spectrum of technical and professional programs of high quality that are of benefit to the careers and lives of the local members.

Each month we intend to present a personal profile of one or two of our Section Officers so that we all get to know our leaders 'on sight'. Introduce yourself to them when you meet them at the next IEEE gathering you are able to attend.

Leadership Workshop

Leadership is an important engineering tool, and learning to be an effective leader in various environments helps to guarantee your personal and professional success as an engineer. Leadership skills will definitely be part of your career when you are a leader or when you work with others who are leaders.

Leaders have vision and the ability to inspire others to accomplish great things. There are two reasons you will benefit by understanding the principles of leadership. First, you can apply these to leadership opportunities and achieve greater success. And second, you can work more effectively with leaders when you are part of their team. When you learn to be a leader and to work with other leaders you achieve greater success in your career and life.

Experienced engineers are well aware that high levels of career success depend on a balance of effective technical and non-technical skills. While some non-technical skills can be obtained in the formal classroom and laboratory, you need to find additional methods of enhancing interpersonal, teamwork, leadership, project management, and other people related skills.

Workshop Overview

The Leadership Skills workshop is intended to help participants develop and improve interpersonal, group, team and leadership skills. The workshop is targeted to those in management or leadership roles in business, industry, academia or volunteer organizations. However, anyone interested in further developing these skills in dealing with people and working within any type of organization will benefit from the workshop. The format for the workshop includes the presentation of the core material and interactive participation; using exercises, case studies and open discussion.

This workshop will be led by Don Bramlett.



Charges for this workshop:

Students: \$5
Members: \$10
Non-Members \$15

Refreshments and a Lunch are included with the workshop,

Workshop Outline

Workshop Content

Definition of Leadership

Leadership

Attributes of a Leader

Difference between

management skills and leadership skills

Interpersonal communications

Personal Interactive Skills

Motivating

Team Building

Coaching

Conflict Management

Situations to use conflict styles and consequences

Confronting Conflict

Problem Solving and Decision Making

Brainstorming

Synergistic Decision Making

This workshop is planned for **March 15, 2013** from 9 AM through 4 PM on the campus of U/M in Ann Arbor.

Building: Michigan Union

Room Number: Anderson

University of Michigan - Ann Arbor

Ann Arbor, Michigan

United States 49109

To register see the vTools meeting notice at:

https://meetings.vtools.ieee.org/meeting_view/list_meeting/22629

Congressional Visits Day

2014 CVD Registration is Open:

IEEE-USA's annual Congressional Visits Day (CVD) will be held this year on March 25 & 26 in Washington, DC.

Any and all IEEE members who are concerned about declining federal investments in basic research, our national labs and our research universities are encouraged to attend.

The CVD offers concerned IEEE members an opportunity to meet directly with your members of Congress and their staff in Washington. This annual event is a crucial part of IEEE-USA's ongoing efforts to protect federal investments in science and engineering.

These efforts are especially crucial in 2014. After three years of tight federal budgets, Congress is looking for additional programs to cut. Basic research and R&D have so far survived the first few rounds of budget cuts with only modest reductions. But that may be about to change.

Programs that the public doesn't know much about or that can be cut without doing immediate damage to too many people are prime targets. R&D fits the bill perfectly. While R&D is vitally important to America's long-term economic prosperity, the fact is, should Congress cut the programs, the country won't feel the impact of these cuts for a few years.

And how many Americans know we have national labs, let alone how they contribute to the country?

"There is simply no better way to get a legislator's attention than to have a voter come to Washington and ask for the legislator's support."

If IEEE members want Congress to protect the basic research and R&D budgets, we need to speak up and make sure Congress knows how valuable these programs are to us and our country.

There is simply no better way to get a legislator's attention than to have a voter come to Washington and ask for the legislator's support.

Especially in an election year.

All IEEE members are welcome and encouraged to attend this year's CVD. To join your colleagues from across the country, go here to learn more and to register:

<http://www.ieeeusa.org/policy/cvd/>

If you would like to speak with your members of Congress, but can't come to Washington, there may be opportunities to hold meetings in your local area.

Please contact IEEE-USA staffer Russ Harrison to find out, or if you have other questions about this year's CVD.

Russ can be reached at r.t.harrison@ieee.org or (202) 530-8326.



SPRING CONFERENCE

April 24, 2014

Key Note Address:
Topic to be announced

Conference Website: www.ieee-sem.org/spring

**Website to be updated as more information
becomes available.**

**To volunteer for the Organizing Committee
please contact**

Hoda S. Abdel-Aty-Zohdy, Ph.D.

Oakland University
zohdyhsa@oakland.edu

Or

Raju Brahmmandhabheri
bvraju@gmail.com

Perceptions:

It has been said that “seeing is believing”, and often the results of what we see convince us of ‘facts’ about the universe around us.

Photographs often capture a ‘vision’ of the world, and let us review that vision with the perspective of both time and considered thought.



If you were required to draw a conclusion from the photograph on the left, what would you say about the attitude of the pilot of the plane?

What was the intention of the statue?

If this is an example of events not connected by the principle of ‘cause and effect’, what can we say about the photographer and the random effects of ‘chance’?

Is anything truly ‘random’?

“If you don’t think the universe is mysterious, you haven’t been paying attention.” – Dean Koontz

Consultants Network Event

Consultants Network Presents

“Obtaining Your Professional Engineering License,”

by Nancy McClain, PE

6:00 PM Wednesday, March 26, 2014

https://meetings.vtools.ieee.org/meeting_registration/register/23425

Elwell Grill
3315 Auburn Road
Auburn Hills, MI 48326
<http://www.elwellgrill.com/>

Nancy M. McClain, PE is the Executive Director of the Michigan Society of Professional Engineers.

EMU Student Branch:

Eastern Michigan University (EMU) is located in Ypsilanti, Michigan

"Established by the State of Michigan in 1849, Eastern Michigan University opened its doors as the Michigan State Normal School in 1853. Michigan had only been a state for 10 years, but as its state constitution made clear, education was to be of primary importance in the region...."



Today, Eastern offers a range of programs of study in a number of areas, including Arts and Sciences, Business, Education, Health and Human Services, and Technology. More than 23,000 students from around the world call EMU their educational home. The University has expanded and changed dramatically during its 160+ years of existence, yet remains true to its roots as an educator of tomorrow's leaders."

(Excerpted from the EMU on-line history)

<http://www.emich.edu/walkingtour/hist.htm>

**EMU Student Branch:
Charter and objective**

Our objective at EMU-IEEE Student Branch is to tutor, teach, mentor, and mold all willing and able participants in modern, effective, and professional methods of engineering as they apply to electrical and electronic engineering. In addition, our current workshop committee head and active member Beau-James Erion is making

Wavelengths is published monthly as the official organ of the IEEE Southeastern Michigan Section.

significant progress in joining the Computer Science Society into the fold, which will provide additional tutelage in computer science and software and computer engineering practices.

Mission Statement

Those of us at IEEE are resolved to be the best that we can be in the field of electrical and electronic engineering. We fight the good fight and work hard to spread information and good practice. If you are among the few, the best, and the proud, if you want to be a top engineer in the world today, join today and hold your head high. IEEE is a renowned international organization whose purpose is to educate and enlighten students and seasoned, professional engineers alike.

Branch Executive Committee Meetings:

Officer meetings are usually held on a first Friday of every month in the Robotics Lab at The College of Technology.

Membership Meetings:

The student member meetings are once a month, time, date and location usually varies.

Workshops are held twice a month time and date varies, however the location is always in the Robotics Lab in The College of Technology.

Current year planned activitiesWorkshops

- o Programming with Arduino
- o Circuit board design
- o Safety lesson on soldering
- o Sensors and Data Acquisitions with microcontrollers

Research

- o Drones
- o Embedded Systems Controls for Autopilot mode

Miscellaneous

- o Beginning of March The Computer Science Society at EMU will be joining our IEEE Student branch

EMU Student Branch Officers:**Samer Koda – Chair**

Samer Koda is currently pursuing an undergrad in Computer Engineering Technology at Eastern Michigan University. His plan after completing his bachelor is to continue his education in Embedded Systems Engineering. Samer has been the chair of IEEE-EMU Student Branch since 2013. He has attended IEEE workshops and competitions; his latest achievement was winning a Project Showcase at the University of Minnesota-Minneapolis in Robotics. Samer recently worked on the Student Activity Project for the Southeast Michigan Section as the Webmaster. For his free time, whenever that happens he likes to work on Drones as well as embedded control systems.

Mohammad Esmaei – Vice Chair



Mohammad Esmaei received his bachelor in Electrical Engineering from Iran and has worked as a Power Line Carrier (PLC) Engineer for three years. Also, has received my Master in Information Security from Eastern Michigan University in 2009. Mohammad is currently pursuing his Ph.D in Technology with a concentration in Mobile Information Security. He is the vice chair of IEEE student branch at Eastern Michigan University since 2013 and have participate in several IEEE workshops and competitions that have won a brown bag competition of circuit design at University of Minnesota-Minneapolis. Moreover, Mohammad is currently teaching several Electronic and Robotic courses at Eastern Michigan University as a part time faculty.

Website

<http://sites.ieee.org/sb-emu/>

Eliada Ziraj – Treasurer



Eliada Ziraj moved to Michigan from Albania after finishing high school. She completed a two year Associate Degree in science in Schoolcraft College and transferred to Eastern Michigan University after that. She was the president of Math and Physics Club at Schoolcraft and a Student Ambassador. She is passionate about science and technology and she is pursuing a degree in Computer Engineering Technology. For the moment she is an intern at Automatic Data Processing in Ann Arbor. She joined IEEE in 2012, attended the IEEE region 4 Leadership conference in Minnesota and became the Treasurer of IEEE branch at EMU. Eliada enjoys making connections, traveling and dancing.

Proposals for funding

Workshops

Programming with Arduino
Electronic assembly and fabrication

Meetings

Officers Elections (Oct 31, 2014)
Calibration on individual projects
Different events for participation

Research

Autonomous Go-Kart
Marker Based Augmented Reality
Atmel 8-bit microcontrollers
Drones

Events - Winterfest

Beau-James Erion – Workshop Committee Officer



Beau-James Erion received his diploma from the Power Technology Institute, specializing in alternative energy, gas turbine design, and power plant operations. He is currently pursuing an undergrad in computer science engineering at Eastern Michigan University, but tends to work between machining, electronics design, and programming. Major projects include ICE, which is a system that utilizes a variety of hardware and electronics for process control applications and integrates their interface with an easy to use android tablet. During the summers, Beau-James works at Variation Reduction Solutions Inc. (VRSI) where he works with machine vision based robot guidance in the automotive sector. In his free time, he rarely sleeps, but enjoys playing piano and brewing beer.

-30-

Interested in becoming a Student Branch Mentor?

Contact **Basil Sherlund** (Chair of Student Activities) at:
bsherlund@yahoo.com

Executive Committee

The SEM Executive Committee is the primary coordination unit for Southeastern Michigan (SEM) IEEE operations. The basic organization chart below shows the 2014 arrangement of communications links designed to provide inter-unit coordination and collaboration.

The SEM Executive Committee meets in a teleconference each month on either the first Wednesday (Even numbered Months) or first Thursday (Odd numbered months) at Noon. The meeting times, phone or WebEx numbers and log in codes are published on the IEEE SEM Website calendar: <http://sites.ieee.org/sem/> Click on the 'Calendar' button in the top banner on the Website first page.

If you wish to attend, or just monitor the discussions, please contact David Mindham, the Section Secretary at: dmindham@ieee.org and request a copy of the agenda and minutes.

More meeting details are available on the next page of this newsletter.

Other Meetings:

Most of our members maintain memberships in one or more of the IEEE Technical Societies, which automatically makes them members of the local Chapter which is affiliated with that Society. As a result, they should receive notices of those meetings each month.

However, most of our members are not 2-dimensional beings, with only one focused interest. That means that they would likely find meetings of the other Chapters also of interest. In order to communicate those options to

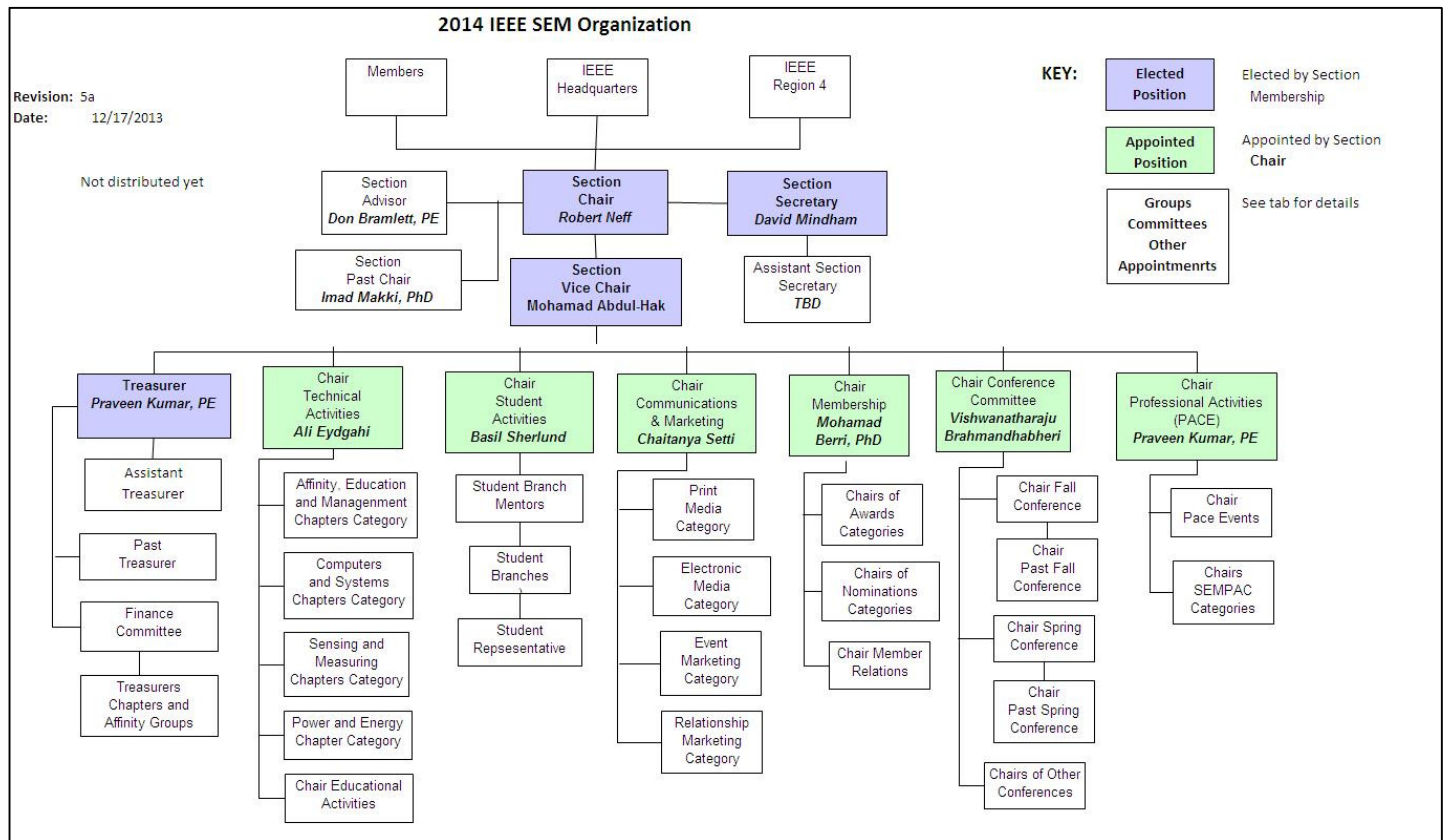
our members and facilitate their attendance we ask each of our Chapters to send their meeting information to our Webmasters who post the meeting information on the Website Calendar.

More detailed information on meetings may be found by using the IEEE meetings site. This may be found through the IEEE SEM Website: <http://sites.ieee.org/sem/> and clicking on the **SEM meetings list** button near the bottom of the left hand banner.

You may also set up automatic e-mail notifications of web updates by using the **"Email Notifications"** button at the top of the **SEM Tools/Links** side banner.

David Mindham - SEM Secretary

-30-



Section Mission & Goals

SEM ExCom Meetings

Section Focus:

The IEEE SEM Senior Officers of the Section have reaffirmed the overall Mission and Goals of the Section, which align with the overall objectives of IEEE worldwide and with the guidance provided by our leadership in Region 4.

You have probably seen the Mission and Goals before. However, it is important to keep these clearly in mind and remind ourselves often that this is what we are about and what we are trying to accomplish.

Section Mission

Inspire – Enable – Empower and Engage Members of IEEE at the local level.

For the purpose of:

- Fulfilling the mission of IEEE (...**foster technological innovation and excellence for the benefit of humanity.**)
- Enhancing the members' growth and development throughout their life cycle
- Providing a professional home

Section Goals

- Increase member engagement,
- Improve relationships with and among members,
- Increase operational efficiency and effectiveness, within the section and its interfaces,
- Enhance collaboration – serve as the local face of IEEE to the community,
- Increase membership,
- Ensure the collection of appropriate information necessary to assist the IEEE to become a data driven organization.

It is now the task of the Section leadership to guide and coach all Section officers and elements to focus their activities on achieving those goals.

--30--

Scheduled Meetings:

The regular meetings of the SEM 'Leadership' ExCom (Executive Committee) are scheduled well in advance to allow everyone to place them in their personal planning calendars, and then defend those dates against encroachment. (*Not always possible.*)

Two types of ExCom meetings are normally scheduled:

Monthly Teleconference / WebEx as well as:

Quarterly Face-to-Face.(See Below)

Note: All IEEE meetings are 'Open' for all members to attend.

The only caveat is that you please register using the specific meeting form found at:

<https://meetings.vtools.ieee.org/main>

This is to ensure we have sufficient space, refreshments and support for everyone who attends.

Teleconference Schedule (held from 12-1 PM):

- Thursday, January 9th
- Wednesday, February 5th
- **Thursday, March 6th**
- Wednesday, May 7th
- Thursday, June 5th
- Thursday, August 7th
- Wednesday, September 3rd
- Wednesday, November 5th
- Thursday, December 4th

F2F Meeting Schedule:

- **Thursday, April 3rd**
- Wednesday, July 9th
- Thursday, October 2nd

More information for the f2f meetings will be sent out as the dates are approached. Keep in touch via the SEM Web site (<http://sites.ieee.org/sem/>) or use the links to the SEM Facebook or LinkedIn pages on the SEM Web page.

vTools Schedule:

All the normally scheduled meetings of each of the other Section 'units' are listed each month in the vTools area of our SEM website at:

http://ewh.ieee.org/r4/se_michigan/calendar1.php

These announcements refer to:

Standing Committee Meetings:

Affinity Group Meetings:

Technical Chapter Meetings:

University Student Branch Meetings:

Calendar Schedule:

Meetings are also announced on the SEM Web page Calendar

<http://sites.ieee.org/sem/>

(Select the "SEM Calendar" button in the top row.)

Note: Often meetings of the 'Executive Committees' of Chapters and Affinity Groups (and standing committees, of course) are listed only in the 'SEM Calendar' page, since it is felt that most members would not wish to sit through the 'administrative' meetings. However, if this type of meeting is just your 'cup of tea', then contact the officers of the unit that is conducting the meeting, and ask to be 'linked' into their teleconference, SKYPE, Google Hangout, or WebEx meeting. They would be happy to have you as a participant.

Many volunteers get interested in Section activities when they get a chance to attend an ExCom meeting and 'peek under the hood' to find out how the machinery of the Section actually runs. It can be a rewarding experience.

David Mindham

SEM Section Secretary.

dmindham@ieee.org

-30-

Editors Corner

This is the 3rd 2014 issue of the Wavelengths newsletter.

Earlier editions in this series may be found on the IEEE SEM Web page at: <http://sites.ieee.org/sem/>. Click on the "Wavelengths" button in the top row of selections.

The new Communications and Marketing Committee, of which the newsletter is only a small part, is working its way toward understanding how best to communicate with our members, and facilitate not only Section leadership communications to our membership but, communications between officers, Committees, and Members.

The best way for the Communications Committee to understand how you, as an IEEE member, would like to be kept informed of Section, Chapter, Affinity Group and Student Branch events is to have you tell us. To that end, an e-mail sent to the Chair of the Communications and Marketing Committee, Chaitanya Setti at: chaitanyagini@ieee.org will get noticed and channeled to the correct officer for attention.

The newsletter does not have a staff of reporters to 'investigate' what is going on in the Section and write up informative articles. We rely on our Officers and Members to provide the 'copy' that we finally present to our readers as the newsletter.

Letter to the Editor:

I would like to see "Letters to the Editor" as a regular column but, of course that means that someone must send an e-mail to the editor...hint!

Co-Editors:

I am selfishly looking for someone interested in helping to edit the newsletter along with me who can learn the process, share in the duties, and help keep the newsletter alive and lively by providing an alternative point of view.

If you feel you might be that person, or would like to train to become that person, please let me know.

k.williams@ieee.org

-30-

Wavelengths – Focus Plan:

Month	AG's	Ch's	Ch's	SB's	Specal Notice	Reporting Events	Monthly Focus	Awards
Jan		1		U/D-M	Future Cities Judges	Election Results	Resolutions	
Feb	Cons	2		MSU	Science Fair Judges	Officer's Welcome	Surviving Winter	Future Cities
Mar		3	13	U/M-AA	Spring Conf. Flyer	Spring Conference	Spring Conference	Science Fair
Apr		4		WSU	National Engrs Wk.	Future Cities	Chapter Focus	GOLD Award
May	Life	5	14	LTU	Outstanding Eng Awd	Science Fair	Humanatarian	New Fellows
Jun		6		SCC	IEEE-USA Apmts.	ESD Banquett	Leadership Skills	SEM Awards
Jul		7	15	U/W	Nominations Call	MD-Webcasts	Students Issues	Region 4
Aug	WIE	8		OU	MGA - Apmts.	Tech-Webinars	Womens Issues	
Sep		9	16	EMU	Region 4 Apmts.	Engineers Day	Professional Skills	
Oct		10		ITT	Fall Conf. Flyer		Fall Conference	
Nov	YP	11	17	U/M-D	ELECTIONS!			
Dec		12			IEEE-Com Apmts.	Fall Conference	Happy Holidays	

Wavelengths – Personal Profiles:

Month	Profiles	Profiles	Committees
Jan	Chair	New Officers	
Feb	V-Chair	Secretary	Communications
Mar	Treasurer	Sect-Adviser	Conference
Apr	Stud-Rep		Education
May		Sr Officers	Executive
Jun			Finance
Jul			Membership
Aug			Nominations
Sep			PACE Activities
Oct			Student Activities
Nov			Technical Activities
Dec		Editor-WL	



Web & Social Sites

SEM Website

<http://sites.ieee.org/sem/>

Each of the sites below may be accessed through the SEM Website:

Section Website Event Calendar

(Select the “SEM Calendar” button - top row.)

SEM Facebook Page

(Select the “” button under the top row.)

SEM LinkedIn Page

(Select the “” button under the top row.)

SEM Officers:

For a complete listing of all - Section - Standing Committee - Affinity Group - Chapter and Student Branch **officers**, see the SEM Officers Roster on the SEM web page under the “About SEM” button and select “Current Officers”.

SEM On Line Community

<http://sem.oc.ieee.org/>

‘ExCom’ Officers

Section Chair
Robert Neff

Section Secretary
David Mindham

Section Vice-Chair
Mohamad Abdul-Hak

Section Treasurer
Praveen Kumar

Section Adviser
Don Bramlett

Chair Communications & Marketing
Chaitanya Setti

Chair Conferences
Raju Brahmandhabheri

Chair Educational Activities
Chaomin Luo

Chair Finance
Bassel Atallah

Chair Membership
Mohamad Berri

Chair Nominations
Chaitanya Setti

Chair Professional Activities
Praveen Kumar

Chair Student Activities
Basil Sherlund

Student Representative
Nevrus Kaja

Chair Technical Activities
Ali Eydgahi

Past Section Chair
Imad Makki



IEEE Southeastern Michigan

Visit Us on the Web at:
<http://sites.ieee.org/sem/>

Leadership Meetings

All IEEE members are welcome to join us at any regularly scheduled meeting:

Advertising Rates

SEM Website & Newsletter
Advertising Rates / Month:

Our readers specify & purchase a wide range of electronic components, equipment and services. Our sponsors come from industry, education, and nonprofit organizations.

Full page \$500,

Half page \$250

Quarter page \$125,

Eighth page \$65.

SEM Executive Committee Monthly Teleconferences:

- 1st Thursday of Each Month @ Noon
- Check the Section Web Calendar at:
<http://sites.ieee.org/sem/>
(Select the "SEM Calendar" button in the top row.)

SEM Executive Committee Face-to-Face Meetings:

- 1/Qtr. Usually held at U/M-D Fairlane Center
- Registration at:
<https://meetings.vtools.ieee.org/main>

SEM Standing Committee Meetings:

SEM Affinity Group Meetings:

SEM Technical Chapter Meetings:

SEM University Student Branch Meetings:

- Meeting schedules are announced on SEM Web Calendar
<http://sites.ieee.org/sem/>
(Select the "SEM Calendar" button in the top row.)
- Registration for all at:
<https://meetings.vtools.ieee.org/main>