



Wavelengths

Volume 53 – Issue 01

January 2014

Contents

Section Chair's Message	1
Section Election Results:	2
Personal Profile – Bob Neff:	3
Leadership Workshop	4
ESD Events:	5
Spring Conference:	6
Consultants Network	7
Chapter 1 - Review	8
Future City Judges:	9
Standing Committees:	10
Student Activities:	11
Executive Committee:	12
Section Mission & Goals	13
SEM ExCom Meetings	13
Editors Corner:	14
'ExCom' Officers	15
Web & Social Sites:	15
Leadership Meetings	16
Advertising Rates	16

Wavelengths Newsletter is produced by IEEE volunteers and published by IEEE Southeastern Michigan (SEM) Section (<http://www.ieee-sem.org>) for the Section members.

*Newsletter website:
http://ewh.ieee.org/r4/se_michigan/newsletter
Email: wavelengths@ieee-sem.org*

Section Chair's Message

I want to thank the members voted for me for Section Chair and especially the members of the Section Executive Committee for their unanimous expression of support at the face-to-face meeting in December where the election results were validated. I thank you for your trust and will do my best to live up to your expectations.

For the last 6 months, in addition to my Communications and Marketing duties, I have served on a committee looking at forming a leaner more defined organization. We have a core of seasoned administrators who are very familiar with the operation of our section and we needed to put them in roles that could mentor and facilitate communication in the defined categories of our operations.

At the December ExCom meeting, it was amusing to me, that per the agenda, we settled on who our Section Chair would be for 2014 prior to my scheduled presentation of the findings of the Organization Committee recommendations. So, as you're new Section Chair, I presenting a vision for a new organization structure which the Executive Committee liked, and voted to adopt, based on a motion from the floor. I abstained which caused a chuckle among the attendees.

The new organization chart can be found in overview in this newsletter (Page 11) and in detail on our web site at www.ieee-sem.org



I have several goals for the upcoming year and, with the help of our new organization, I fully expect to make major improvements in all of these:

- 1) Improve the nomination and election process,
- 2) Improve communication with our student members,
- 3) Provide timely information of member interest on the section web site,
- 4) Improve the management of our Section Spring and Fall Conferences,
- 5) Improve the marketing of our Chapter events.

I am agreeable to adding more items to this list and would welcome input from our membership. However, I want to be careful to set goals that can be attained.

Please feel free to contact me with ideas, suggestion and concerns, and especially your willingness to volunteer to work on the goals above, and any that you might suggest. We always need volunteers and would gratefully accept your assistance.

Robert Neff
IEEE SEM Section Chair
--30--

Section Election Results:

IEEE SEM Senior Officers for 2014

The IEEE SEM Section elections have concluded, and the Executive Committee (ExCom) approved the results at its face-to-face meeting on 12/11/2013. The following outlines our Section Senior Officers for 2014.

In the coming months we will profile each of our Section Senior Officers, our Standing Committees, their function and the committee Chairs.

IEEE Section Senior Officers:

Chair:

Robert Neff is a **technical Sales and Market executive, entrepreneur and a member of the BOD of several organizations and companies. He is an Eaton retiree and alumni of Underwriters Laboratories, Emerson Electric and Borg Warner. He has served on the BOD of SEM IEEE and SEM EMC Society. Bob has been invited to deliver automated highway and autonomous vehicle presentations at IEEE and SAE Conferences because of his background in radar systems, automated highway and DSRC. (See the complete profile on Robert on page 3.)**

Vice-Chair:

Dr. Mohamad Abdul-Hak is the elected Vice-Chair the IEEE SEM section for 2014. He is eager to contribute to the continued success of the section in fulfilling the IEEE SEM section mission in inspiring, enabling, empowering and engaging the local IEEE members.



Secretary:

David Mindham takes over as the Section Secretary.



Treasurer

Praveen Kumar continues as Section Treasurer.



The expanded Executive Committee officers listing below includes our Standing Committee Chairs as well our...:



Section Adviser,
Don Bramlett:

Our Student Representative
Nevrus Kaja



and our Past Chair.
Imad Makki



-30-

Section Officers	Name
Section Executive Committee:	
Section Chair	Robert Neff
Section Secretary	David Mindham
Section Vice-Chair	Mohamad Abdul-Hak
Section Treasurer	Praveen Kumar
Section Adviser	Don Bramlett
Chair Communications & Marketing	Chaitanya Setti
Chair Conferences	Vishwanatharaju Brahmandhabheri
Chair Educational Activities	Chaomin Luo
Chair Finance	Bassel Atallah
Chair Membership	Mohamad Berri
Chair Nominations	Chaitanya Setti
Chair Professional Activities	Praveen Kumar
Chair Student Activities	Basil Sherlund
Student Representative	Nevrus Kaja
Chair Technical Activities	Ali Eydgahi
Past Section Chair	Imad Makki

Personal Profile – Bob Neff:**IEEE SEM 2014 Section Chair**

Robert Neff, who prefers to be called Bob, has been married for 47 years to Patricia Neff. They met at college and have raised two wonderful daughters and have one grandson.

Bob is engaged in Sales and Marketing for companies and organizations involved in high technology products, projects and people. Bob is a founder in **Sales and Marketing Insight**, his strategic marketing company, and **Intrass** a vehicle safety company at the forefront of 5.9 GHz vehicle-to-vehicle (V2V) Dedicated Short Range Communication (DSRC).

Bob has served the IEEE South Eastern Michigan (SEM) and the EMC Society as Marketing Chairman and has worked on several projects for IEEE International EMC Society. Bob was Marketing Chairman for the IEEE International Electromagnetic Compatibility Symposium at Detroit Cobo Center in August of 2008.

Bob is also Marketing Chairman for the Professional Ski Instructors of America / American Association of Snowboard Instructors Central Division and a member of their Board of Directors. Bob is a Level II Certified and Advanced Accredited ski instructor. Bob is a ski instructor at Mt Brighton.

Bob is an SAE life member and Chairman of the SAE J2735 DSRC Vehicle Safety Subcommittee and is a member of the SAE J2735 DSRC Standard Technical Committee that has written the interoperability standard for V2V communication.

Bob retired from Eaton Corporation where he held various technical and marketing positions. The majority of Bob's time at Eaton was spent in the VORAD Division working on collision warning, adaptive cruise control and blind spot warning using 24 GHz and 77 GHz radar. Bob was Technical Lead for Eaton's participation in the National Automated Highway Demonstration in 1997. Bob earned his Six Sigma Black Belt while at Eaton. Bob has delivered automated highway and autonomous vehicle presentations at IEEE and SAE Conferences.

Prior to Eaton Corporation Bob worked for Emerson Electric, Link Belt, Borg Warner and American Motors. After Eaton, Bob worked for Underwriters Laboratories and helped establish their automotive EMC testing laboratory.

Bob Graduated from Ferris State University with a Bachelor of Science Degree in Business and an Associate in Arts Degree while studying Engineering.

Each month we intend to present a personal profile of one or two of our Section Officers so that we all get to know our leaders 'on sight'. Introduce yourself to them when you meet them at the next IEEE gathering you are able to attend.

--30--

Leadership Workshop

Leadership is an important engineering tool, and learning to be an effective leader in various environments helps to guarantee your personal and professional success as an engineer. Leadership skills will definitely be part of your career when you are a leader or when you work with others who are leaders.

Leaders have vision and the ability to inspire others to accomplish great things. There are two reasons you will benefit by understanding the principles of leadership. First, you can apply these to leadership opportunities and achieve greater success. And second, you can work more effectively with leaders when you are part of their team. When you learn to be a leader and to work with other leaders you achieve greater success in your career and life.

Experienced engineers are well aware that high levels of career success depend on a balance of effective technical and non-technical skills. While some non-technical skills can be obtained in the formal classroom and laboratory, you need to find additional methods of enhancing interpersonal, teamwork, leadership, project management, and other people related skills.

Workshop Overview

The Leadership Skills workshop is intended to help participants develop and improve interpersonal, group, team and leadership skills. The workshop is targeted to those in management or leadership roles in business, industry, academia or volunteer organizations. However, anyone interested in further developing these skills in dealing with people and working within any type of organization will benefit from the workshop. The format for the workshop includes the presentation of the core material and interactive participation; using exercises, case studies and open discussion.

This workshop will be led by Don Bramlett.



Charges for this workshop:

Students: \$5
Members: \$10
Non-Members \$15

Refreshments and a Lunch are included with the workshop,

Workshop Outline

Workshop Content

- Definition of Leadership
- Leadership**
 - Attributes of a Leader
 - Difference between management skills and leadership skills
- Interpersonal communications**
 - Personal Interactive Skills
 - Motivating
 - Team Building
 - Coaching
- Conflict Management**
 - Situations to use conflict styles and consequences
 - Confronting Conflict
- Problem Solving and Decision Making**
 - Brainstorming
 - Synergistic Decision Making

This workshop is planned for **March 15, 2013** from 9 AM through 4 PM on the campus of U/M in Ann Arbor.

Building: Michigan Union
Room Number: Anderson
 University of Michigan - Ann Arbor
 Ann Arbor, Michigan
 United States 49109

To register see the vTools meeting notice at:
https://meetings.vtools.ieee.org/meeting_view/list_meeting/22629

“If you don’t think the universe is mysterious, you haven’t been paying attention.” – Dean Koontz

ESD Events:



Give Back to the Future

Be an Engineer Mentor

Volunteer Mentors Needed!!

2014 Engineering SMARt Detroit™ Program

What is Engineering SMARt Detroit?

Expanding on a successful tradition of supporting youth education in engineering, The Engineering Society of Detroit® has developed an exciting program for high school level students called **Engineering SMARt Detroit**. With a real-world application of science, math, architecture and technology (SMARt), students will learn about energy and apply their knowledge to an engineering design project. Through a new understanding of energy, they will cultivate their desire to be active contributors to the sustainability and vitality of their environment. Through a series of learning modules, students will be introduced to the basics of energy, alternative energies, and the energy grid, in an atmosphere of fun activities and team building.

What is the purpose of the program?

- Provide high school level students with a real-world application of Science, Math, Architecture and Technology
- Improve students literacy, numeracy and science reasoning
- Excite students with STEM education and career opportunities in engineering

When is the competition?

The final competition will be held at the end of May 2014. A final competition is team-based where students will design and present their energy efficient residential concept.

When will the program be held?

The program begins at the end of January 2014 and runs for fifteen weeks (one hour per week) into May 2014.

Why are volunteer mentors needed and what role do they play?

Volunteer mentors are a critical element to the success of this program and are needed to help teach and coach in the classroom as mentors. Mentors are invited to work with a team of engineers to assist students with their project development during the four month period from February through May. Engineer teams coordinate their schedules together so the classroom always has coverage.

How can I sign up?

To mentor, please contact Mary Kovari, Director of Community Outreach, 248.353.0735, ext. 166, or at mkovari@esd.org



Spring Conference:



SPRING CONFERENCE

April 24, 2014

Key Note Address:
Topic to be announced

Conference Website: www.ieee-sem.org/spring

**Website to be updated as more information
becomes available.**

**To volunteer for the Organizing Committee
please contact**

Hoda S. Abdel-Aty-Zohdy, Ph.D.

Oakland University
zohdyhsa@oakland.edu

Or

Raju Brahmmandhabheri
bvraju@gmail.com

Consultants Network Presents

6:00 PM Wednesday, January 29, 2014

Elwell Grill
3315 Auburn Road
Auburn Hills, MI 48326
<http://www.elwellgrill.com/>

The Southeastern Michigan Chapter of the IEEE Consultants Network brings consultants and clients together to discuss business and technology.

We encourage anyone who has their own practice, or looking to start their own practice, to join us to learn and grow.

Please Register at:

https://meetings.vtools.ieee.org/meeting_view/list_meeting/22827

Chapter 1 - Review

IEEE SEM Chapter 1 - Joint (Signal Processing Society, Circuits and Systems Society, and Information Theory Society)

IEEE SEM Ch.1 is dedicated to expanding the knowledge of all its members.

The Signal Processing Society focuses on the technology for the generation, transformation, and interpretation of information.

The mission of the Circuits and Systems Society is to foster CASS members across disciplines to address humanity's grand challenges by conceiving and pioneering solutions to fundamental and applied problems in circuits and systems.

The Information Theory Society focuses on the processing, transmission, storage, and use of information, and the foundations of the communication process.

2013 Activities:

Chapter 1 had four General Membership meetings in 2013.

See below for the list of speakers and topics.

Dr. Leland E. Pierce of University of Michigan Ann Arbor
Topic: Spaceborne Radar Interferometry

Dr. Mazin Yousif, Ph.D. of Oakland University
Topic: CLOUD COMPUTING- A PARADIGM IT CHANGER

Dr. Agustin Ochoa, Ph.D. of Cypress Semiconductors
Topic: DPI/SFG—A Systematic Analysis Approach for Linear Circuits Including Feedback

Dr. Yi Lu Murphey of University of Michigan Dearborn
Topic: Distributed Agent Diagnostic Systems for Signal Fault Diagnostics

Planned 2014 Activities:

General Membership Meeting Feb 18th 2014

Topic: Using O-scopes for Circuits and Systems Applications

General Membership Meeting Sep 16th 2014

Topic: TBD

Ch.1 Signals and Systems Workshop May 3rd 2014

Topic: TBD

Invitation:

As always Chapter 1 is looking for members to serve on its Executive Committee.



Joe Najor – Chapter 1 Secretary.

Each month we will review one of SEM's Affinity Groups and/or Chapters and Student Branches.

For current meeting information please refer to the SEM Website Calendar. kw

Future City Judges:**IEEE-SEM SECTION SPECIAL AWARD JUDGES NEEDED FOR JANUARY 2014 FUTURE CITY COMPETITION**

by **Don C. Bramlett**, PE, SMIEEE - IEEE/SEM Advisor

This is the fourteenth year that IEEE-SEM will provide a dedicated team of judges and a special professional organization award for the project having the most innovative application of electro-technology in the design of a city in the future.

Judging for the 2014 Michigan Regional Future City Competition will be on

Monday, January 27, 2014 at the Suburban Collection Showplace in Novi, just off I-96 on Grand River between Novi Road and Beck Road.

Orientation and breakfast for judges will start at **7:30 AM**. Judging will be from 9:00 AM to 11:00 AM, followed by lunch.

A complimentary continental breakfast and lunch are provided that day for the judges. This pleasurable and fulfilling task only takes half a day.

This is one of the premier pre-university programs for energized middle school students. Please volunteer to be among those to comprise the team of IEEE-SEM Section special award judges.

I encourage anyone who has an interest in the science and math education of our youth or an interest in pre-university education programs to consider being a judge at the Michigan Regional Future City Competition.

IEEE Student Branch members as well as regular IEEE members have found this to be a fulfilling experience in past years.

As a judge myself in previous years, I have found the experience of talking with the students, finding out their interests and observing their projects/presentations to be very rewarding.

So come out and spend the morning with us as we meet with some of the potential engineers, scientists and city planners of the future.

If interested in more information concerning being a member of the team of judges for the IEEE-SEM professional award at the Michigan Regional Future City Competition, contact

Don Bramlett at (313) 235-7549 during normal weekday business hours, at my cell (313) 608-6223, or at home at (734) 591-1452 or by email at d.bramlett@ieee.org

-30-

“Never doubt that a few dedicated and determined men and women can change the world. Indeed, it’s the only thing that ever has.” - David Weber

Standing Committees:

In most IEEE organizations the 'real' work is handled by its Standing Committees. These are committees with specific areas of responsibility and defined Charters. In our Section we have 9 Standing Committees, listed below:

Communications & Marketing

Conference

Education

Executive

Finance

Membership

Nominations

Professional Activities

Student Activities

Technical Activities

The 'division of responsibilities' between these committees is often 'blurred' and frequently overlaps. A good example is the "Leadership Workshop" mentioned on page 4 of this issue of Wavelengths. This is an activity initially targeted for Students, but is clearly related to Professional Activities (Soft Skills), and is Educational and also a Technical Activity, and is a Workshop, so also relates to the duties of the Conference Committee.

When this happens, as it frequently does in IEEE, all the relevant committees contribute what they can to ensure a successful event, and we all smile when our members tell us ... "That was great! When is the next one?"

It should be obvious that two elements, (Communication and Cooperation), are critical to keeping the Section, and its events, running well.

This month we are giving the new Chairs of our Standing Committees some time to get organized and understand exactly what their jobs are supposed to cover, and begin providing regular reports to the membership that will be included as a normal part of our publications in this newsletter. (Note that our Section Secretary, David Mindham, has already provided the December meeting report from the Section Executive Committee, which can be read on page 11.)

In this area of the Newsletter, we also plan to provide a monthly 'Focus' on each of our Standing Committees, in turn, beginning with the Communications and Marketing Committee, in February.

-30-

Student Activities:

University Mentors Activity

The IEEE SEM University Mentors function to organize and coordinate members interested in working with students in one of our 9 active Student Branches in our Section.

University Mentors Goals:

The list below is a short set of some of the possible goals and activities for Student Branch Mentors to consider when working with a Student Branch:

- Attend as many of the Student Branch meetings as they are able.
- Provide information on Section activities of interest to the students,
- Inform the Branch officers of possible officer educational activities (S-PAC's, Workshops, Training opportunities) in the Section and Region.
- Help the Branch officers with IEEE procedural issues, reports, contacts, funding options, etc.
- Suggest possible speakers for Student Branch meetings such as the Distinguished Lecturers programs from the Societies and Councils, local Section speakers of interest, etc.
- Invite the Student Branch officers to attend the Section Executive Committee meetings and voice their concerns and interests.
- Encourage all of the Student Branch members to attend the Section Conferences each spring and fall.
- Assist the Student Branch to establish and maintain a Branch website and e-mail membership list.
- Assist the Student Branch officers to write articles for the Section newsletter on Branch activities.
- Help the Student Branch officers to file the appropriate reports to keep in touch with the Section and with IEEE HQ.
- At least once each school year, lecture to the Student Branch on the structure of IEEE, its primary goals and objectives, and the

place they can play in achieving those goals and objectives as Student members, and later as Regular and Senior members and as Officers in either the RAB, the TAB, or both.

If our Student Branch Mentors are able to do at least a few of the items on this list, we should go far in helping our Student members prepare for a larger role in IEEE, industry, and society as a whole.

Interested in becoming a Student Branch Mentor?
Contact **Basil Sherlund** (Chair of Student Activities) at:
bsherlund@yahoo.com

Michelle Knight –
Student Activities Secretary

--30--

Executive Committee:

The SEM Executive Committee met in a Face-to-Face meeting on Wednesday, December 11, 2013 at the University of Michigan – Dearborn's Fairlane Conference Center. Over 30 officers and members attended, representing the majority of SEM's chapters, affinity groups, officers, and committees.

The meeting started with a thirty minute networking session catered by Pizza Papalis. The networking session is an important aspect of the Face-to-Face meeting which allowed the newly elected officers to meet the other members of the Executive Committee.

The 2013 and 2014 budgets were the first topic of discussion. The SEM Section has been performing well over the last year and a motion passed to move \$7000 from the Section's

checking account to the long term investment account. The budget also features increased spending on student activities in 2014 and allocations to send two members of the Section to the Section Congress scheduled in Amsterdam this August.

Chaitanya Setti presented the 2014 election results. Praveen Kumar was reelected as Section Treasurer for 2014, David Mindham will serve as the newly elected Section Secretary, Mohamad Abdul-Hak won as a write-in candidate for the Section Vice-Chair, and Robert Neff won as a write-in candidate for the Chair position. The Executive Committee voted to confirm the 2014 elections.

The Executive Committee also voted on a restructuring plan that moves the organization of the Standing Committees towards a line organization. The reorganization is intended to streamline the Section, improve communications among

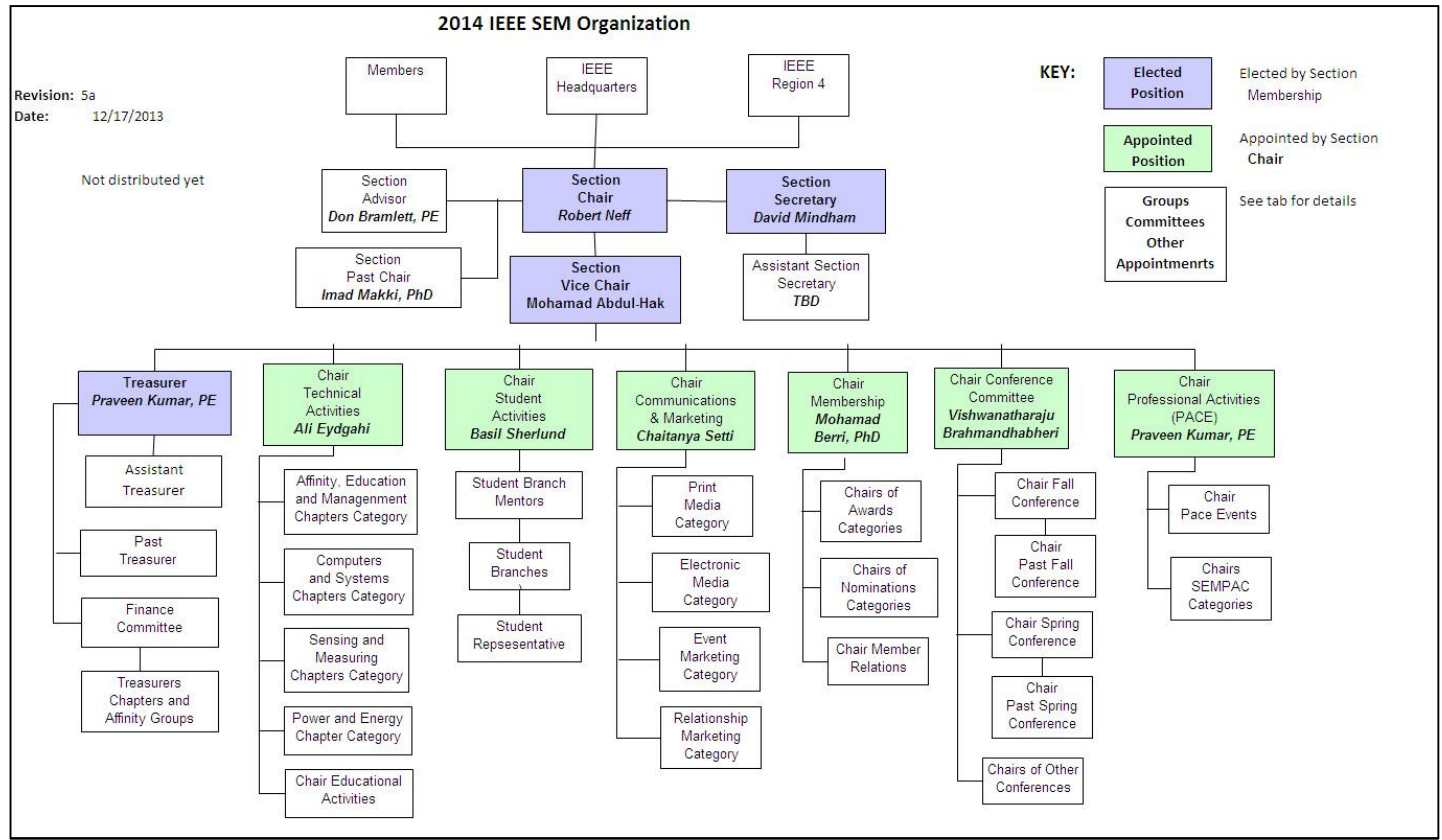
Section elements, make the Chair's job a bit easier and put another level of experience between the chair and the Standing Committees. (See the revised Section Organizational Chart below).

There are still several appointed positions open in the Standing Committee. These positions serve as pivotal roles and are an excellent way to get involved with the SEM Section and the Executive Committee. Please consider becoming involved.

The Executive committee meets monthly with teleconferences, and will have Face-to-Face meetings quarterly in 2014. Details will be posted on the SEM Web Calendar and in the Newsletter as the meeting dates are approached.

David Mindham - SEM Secretary

-30-



Section Mission & Goals

SEM ExCom Meetings

Section Focus:

As reported in the November Wavelengths, Senior Officers of the Section met and reaffirmed the overall Mission and Goals of the Section, which align with the overall objectives of IEEE worldwide and with the guidance provided by our leadership in Region 4.

Those Mission and Goals are:**Section Mission**

Inspire – Enable – Empower and Engage Members of IEEE at the local level.

For the purpose of:

- Fulfilling the mission of IEEE (...**foster technological innovation and excellence for the benefit of humanity.**)
- Enhancing the members' growth and development throughout their life cycle
- Providing a professional home

Section Goals

- Increase member engagement,
- Improve relationships with and among members,
- Increase operational efficiency and effectiveness, within the section and its interfaces,
- Enhance collaboration – serve as the local face of IEEE to the community,
- Increase membership,
- Ensure the collection of appropriate information necessary to assist the IEEE to become a data driven organization.

It is now the task of the Section leadership to guide and coach all Section officers and elements to focus their activities on achieving those goals.

--30--

Scheduled Meetings:

Regular meetings of the SEM 'Leadership' ExCom. (Executive Committee) are scheduled well in advance to allow everyone to place them in their personal planning calendars, and then defend those dates against encroachment. (*Not always possible.*)

Two types of ExCom meetings are normally scheduled: Teleconferences and Face-to-Face. (See Below)

Note: All IEEE meetings are 'Open' for all members to attend.

The only caveat is that you please register using the specific meeting form found at:

<https://meetings.vtools.ieee.org/main>

This is to ensure we have sufficient space, refreshments and support for everyone who attends.

Teleconference Schedule (held from 12-1 PM):

- Thursday, January 9th
- Wednesday, February 5th
- Thursday, March 6th
- Wednesday, May 7th
- Thursday, June 5th
- Thursday, August 7th
- Wednesday, September 3rd
- Wednesday, November 5th
- Thursday, December 4th

F2F Meeting Schedule:

- Thursday, April 3rd
- Wednesday, July 9th
- Thursday, October 2nd

More information for the f2f meetings will be sent out as the dates are approached. Keep in touch via the SEM Web site (<http://sites.ieee.org/sem/>) or use the links to the SEM Facebook or LinkedIn pages on the SEM Web page.

All the normally scheduled meetings of each of the other Section 'units' are listed each month in our electronic communication media:

These announcements refer to:

Standing Committee Meetings:

Affinity Group Meetings:

Technical Chapter Meetings:

University Student Branch Meetings:

Meetings are also announced on the SEM Web page Calendar

<http://sites.ieee.org/sem/>

(Select the "SEM Calendar" button in the top row.)

David Mindham

SEM Section Secretary.

-30-

Editors Corner:

This is the 3rd issue of the new Wavelengths newsletter. Earlier editions in this series (November and December) may be found on the IEEE SEM Web page at: <http://sites.ieee.org/sem/>. Click on the "Wavelengths" button in the top row of selections.

The new Communications and Marketing Committee, of which the newsletter is only a small part, is still working its way toward understanding how best to communicate with our members, and facilitate not only Section leadership communications to our membership but, communications between officers, Committees, and member to member.

We have all experienced e-mail 'in basket overload' and the existence of the newsletter is only one of the methods we are using to help reduce the number of e-mail messages sent to our membership.

The good part of this means of communications is that it is available when you have time, and want to read it, as opposed to e-mail, which demands your attention 'right now'. The bad part is that it also can be ignored completely...forever! In that case, it could fail completely!

So how will we ever know if anyone reads the newsletter? We plan survey for later in the year which may give us a window into the minds of our

readers. I would also like to see a "Letters to the Editor" as a regular column but, of course that means that someone must send an e-mail to the editor...me!

Co-Editors:

I am selfishly looking for someone interested in helping to edit the newsletter along with me who can learn the process, share in the duties, and help keep the newsletter alive and lively by providing an alternative point of view. If you feel you might be that person, please let me know.

k.williams@ieee.org

-30-

Wavelengths – Focus Plan:

Month	AG's	Ch's	Ch's	SB's	Special Notice	Reporting Events	Monthly Focus	Awards
Jan		1		U/D-M	Science Fair Judges	Election Results	Resolutions	
Feb	Cons	2	13	MSU	Spring Conf. Flyer	Officer's Welcome	Surviving Winter	Future Cities
Mar		3		U/M-AA	National Engrs Wk.	Spring Conference	Spring Conference	Science Fair
Apr		4	14	WSU	Outstanding Eng Awd	Future Cities	Chapter Focus	GOLD Award
May	GOLD	5		LTU	IEEE-USA Apmts.	Science Fair	Humanitarian	New Fellows
Jun		6	15	SCC	Nominations Call	ESD Banquett	Leadership Skills	SEM Awards
Jul		7		U/W	MGA - Apmts.	MD-Webcasts	Students Issues	Region 4
Aug	Life	8	16	OU	Region 4 Apmts.	Tech-Webinars	Womens Issues	
Sep		9		EMU	Fall Conf. Flyer	Engineers Day	Professional Skills	
Oct		10		ITT	ELECTIONS!		Fall Conference	
Nov	WIE	11	17	U/M-D	IEEE-Com Apmts.			
Dec		12			Future Cities Judges	Fall Conference	Happy Holidays	

Wavelengths – Personal Profiles:

Month	Profiles	Profiles	Committees
Jan	Chair	New Officers	
Feb	Secretary	Dir-Tech	Communications
Mar	V-Chair	Sec-Advisor	Conference
Apr	Treasure	Wbmstr	Education
May	Dir-Com	Dir-Mrkt	Executive
Jun	Dir-Conf	Inf-Coord	Finance
Jul	Dir-Edu	Dir-Apmts	Membership
Aug	Dir-Fin	Dir-Awrds	Nominations
Sep	Dir-Mem	Dir-Ind-RI	Professional Activities
Oct	Dir-Nom	Dir-Ach-RI	Student Activities
Nov	Dir-PACE	Editor-WL	Technical Activities
Dec	Dir-Stud	Stud-Rep	



Web & Social Sites:

SEM Website

<http://sites.ieee.org/sem/>

Each of the sites below may be accessed through the SEM Website:

Section Website Event Calendar

(Select the “SEM Calendar” button - top row.)

SEM Facebook Page

(Select the “” button under the top row.)

SEM LinkedIn Page

(Select the “” button under the top row.)

SEM Officers:

For a complete listing of all - Section - Standing Committee - Affinity Group - Chapter and Student Branch **officers**, see the SEM Officers Roster on the SEM web page under the “About SEM” button and select “Current Officers”.

SEM On Line Community

<http://sem.oc.ieee.org/>

‘ExCom’ Officers

Section Chair
Robert Neff

Section Secretary
David Mindham

Section Vice-Chair
Mohamad Abdul-Hak

Section Treasurer
Praveen Kumar

Section Adviser
Don Bramlett

Chair Communications & Marketing
Chaitanya Setti

Chair Conferences
Raju Brahmandhabheri

Chair Educational Activities
Chaomin Luo

Chair Finance
Bassel Atallah

Chair Membership
Mohamad Berri

Chair Nominations
Chaitanya Setti

Chair Professional Activities
Praveen Kumar

Chair Student Activities
Basil Sherlund

Student Representative
Nevrus Kaja

Chair Technical Activities
Ali Eydgahi

Past Section Chair
Imad Makki



IEEE Southeastern Michigan

Visit Us on the Web at:
<http://sites.ieee.org/sem/>

Leadership Meetings

All IEEE members are welcome to join us at any regularly scheduled meeting:

Advertising Rates

SEM Website & Newsletter
Advertising Rates / Month:

Our readers specify & purchase a wide range of electronic components, equipment and services. Our sponsors come from industry, education, and nonprofit organizations.

Full page \$500,

Half page \$250

Quarter page \$125,

Eighth page \$65.

SEM Executive Committee Monthly Teleconferences:

- 1st Thursday of Each Month @ Noon
- Check the Section Web Calendar at:
<http://sites.ieee.org/sem/>
(Select the "SEM Calendar" button in the top row.)

SEM Executive Committee Face-to-Face Meetings:

- 1/Qtr. Usually held at U/M-D Fairlane Center
- Registration at:
<https://meetings.vtools.ieee.org/main>

SEM Standing Committee Meetings:

SEM Affinity Group Meetings:

SEM Technical Chapter Meetings:

SEM University Student Branch Meetings:

- Meeting schedules are announced on SEM Web Calendar
<http://sites.ieee.org/sem/>
(Select the "SEM Calendar" button in the top row.)
- Registration for all at:
<https://meetings.vtools.ieee.org/main>