



WELCOME
to the
IEEE/PES
Switchgear Committee
Fall 2011 Meeting



Welcome to **Nashville!**

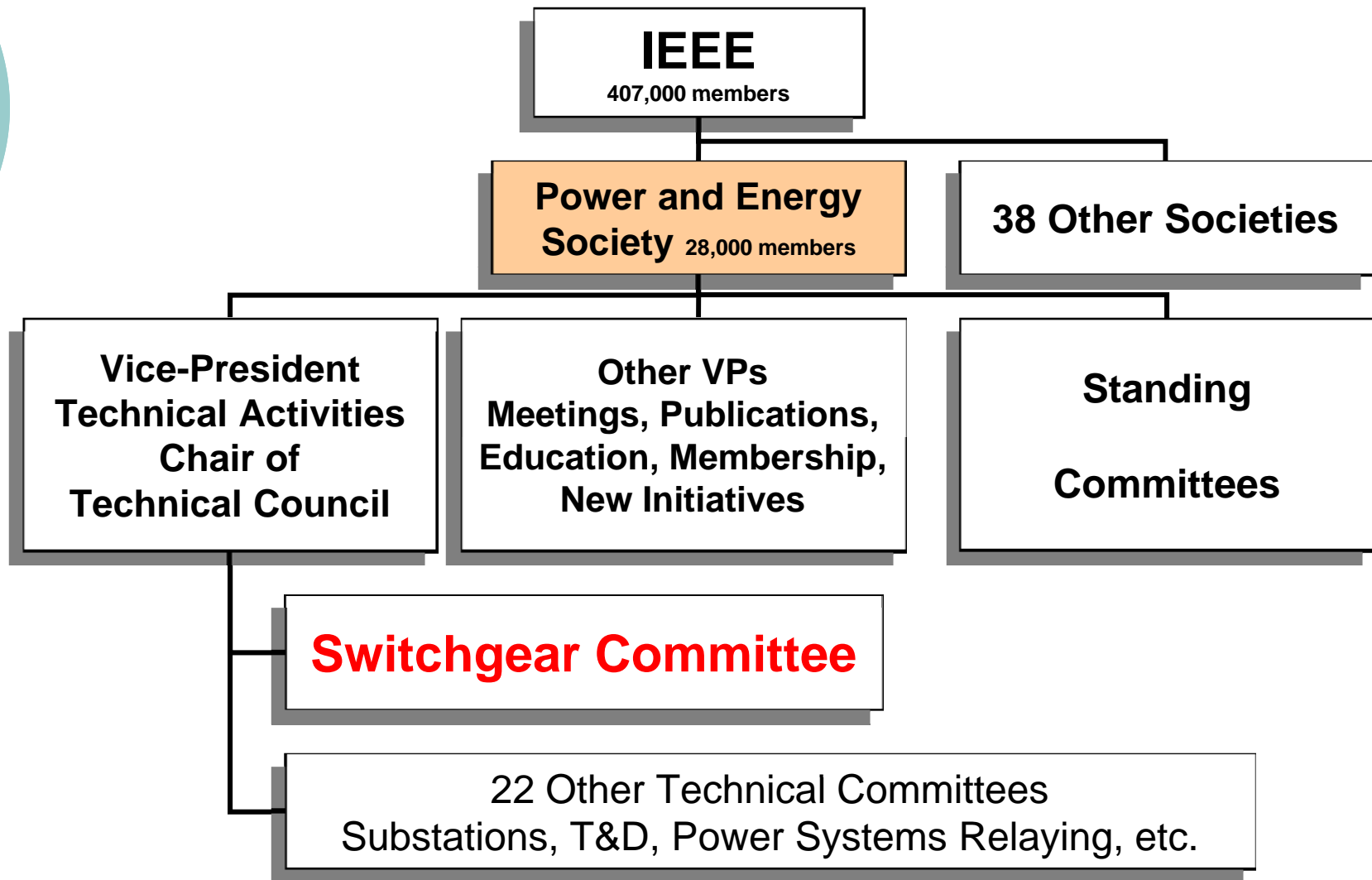
- Orientation - Welcome
 - Newcomers
 - AND ...
 - Experienced Veterans!
- What are these mysterious "C37" things?
- Ted Olsen, Vice Chair
Switchgear Committee



Topics of Discussion

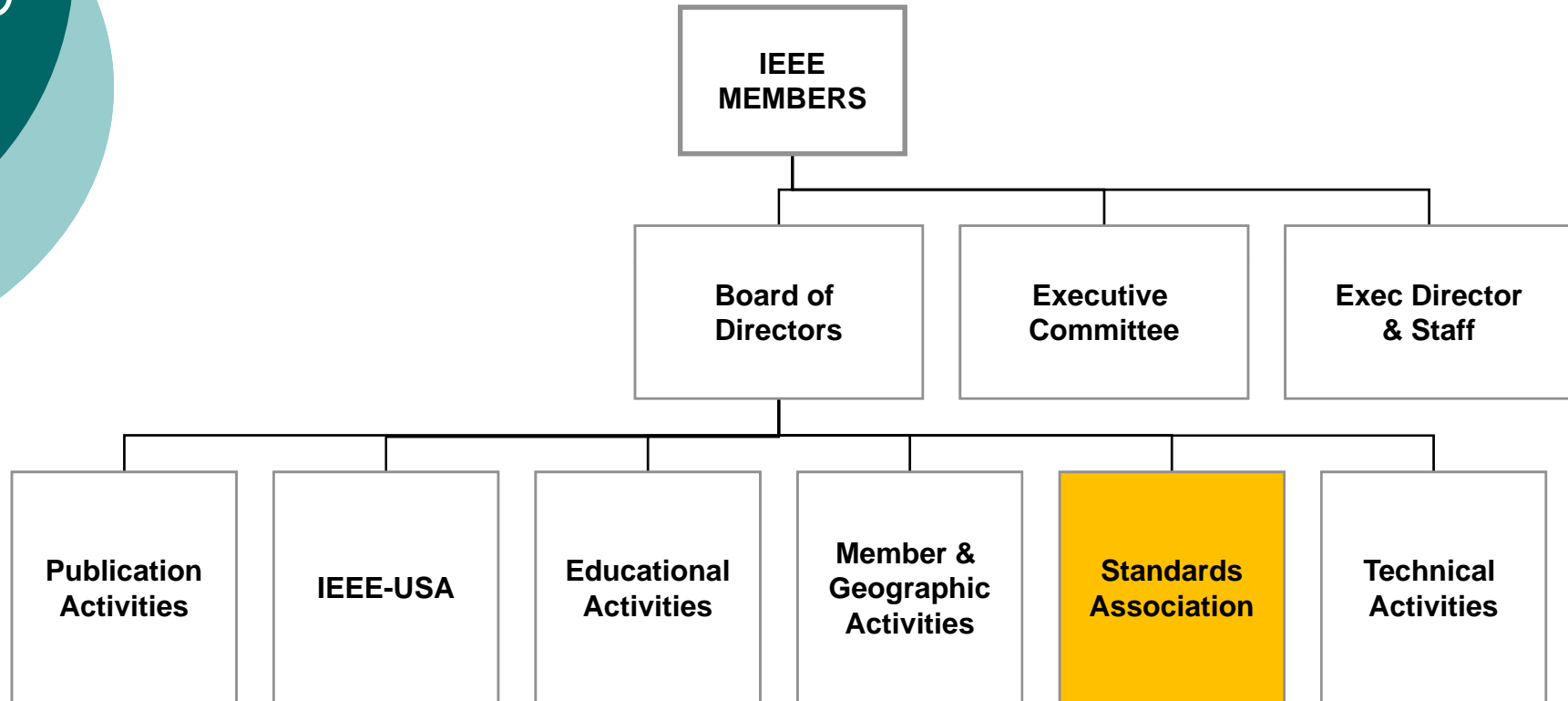
- Where do we fit in?
- Scope
- Officers
- Organization
- Activities
- Standards Process
- Subcommittee Organization
- Frequently Asked Questions

Where do we fit in?

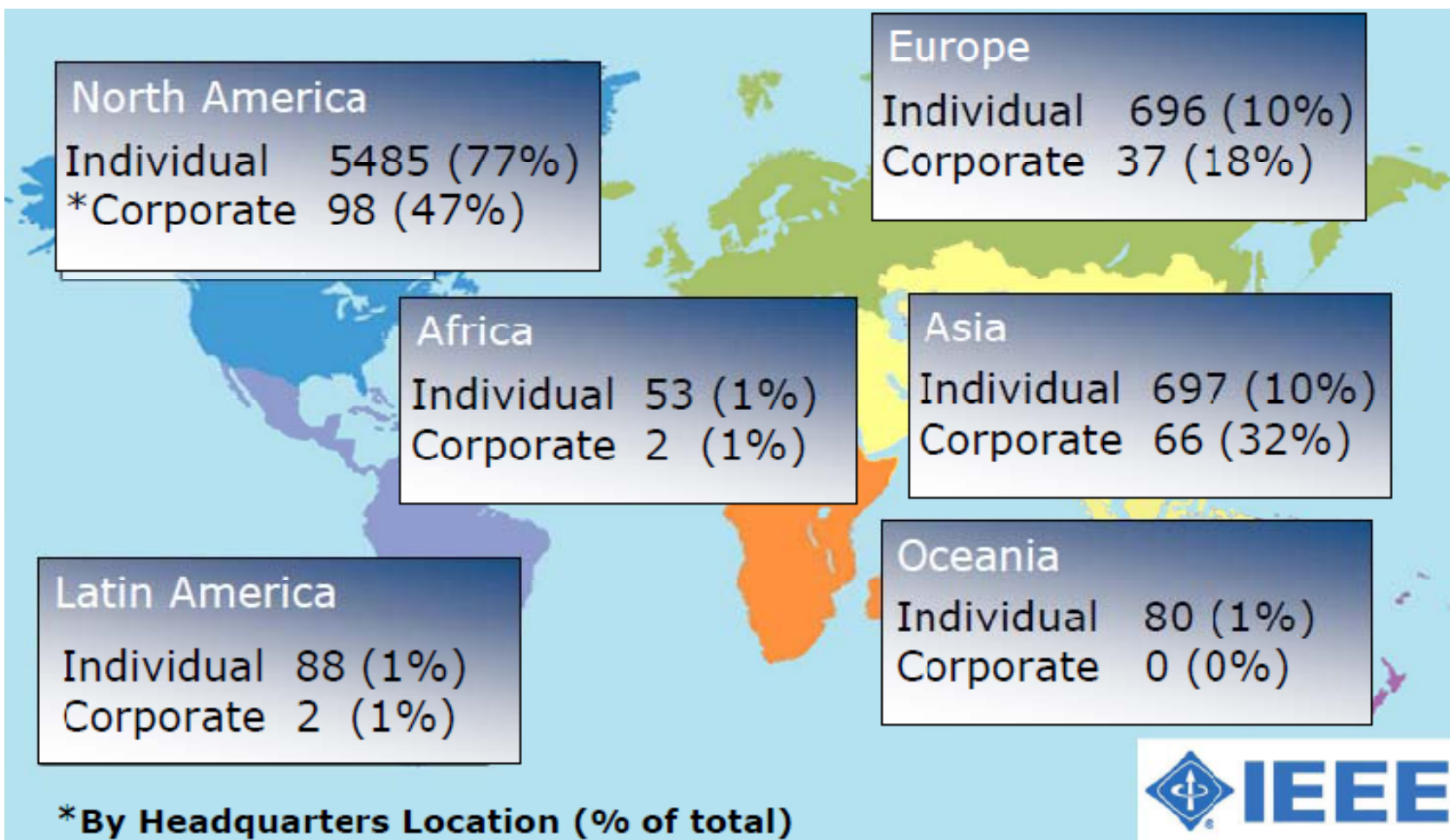




IEEE Organization



IEEE-SA Global Membership (Dec 2010)





Switchgear Committee Scope

Treatment of matters in which the dominant factors are the **design, construction** and **operation** of **devices** or **assembled gear** to establish (**make**), **interrupt**, or **change connections** in **any electric circuit** under **normal or abnormal conditions**, including the following:



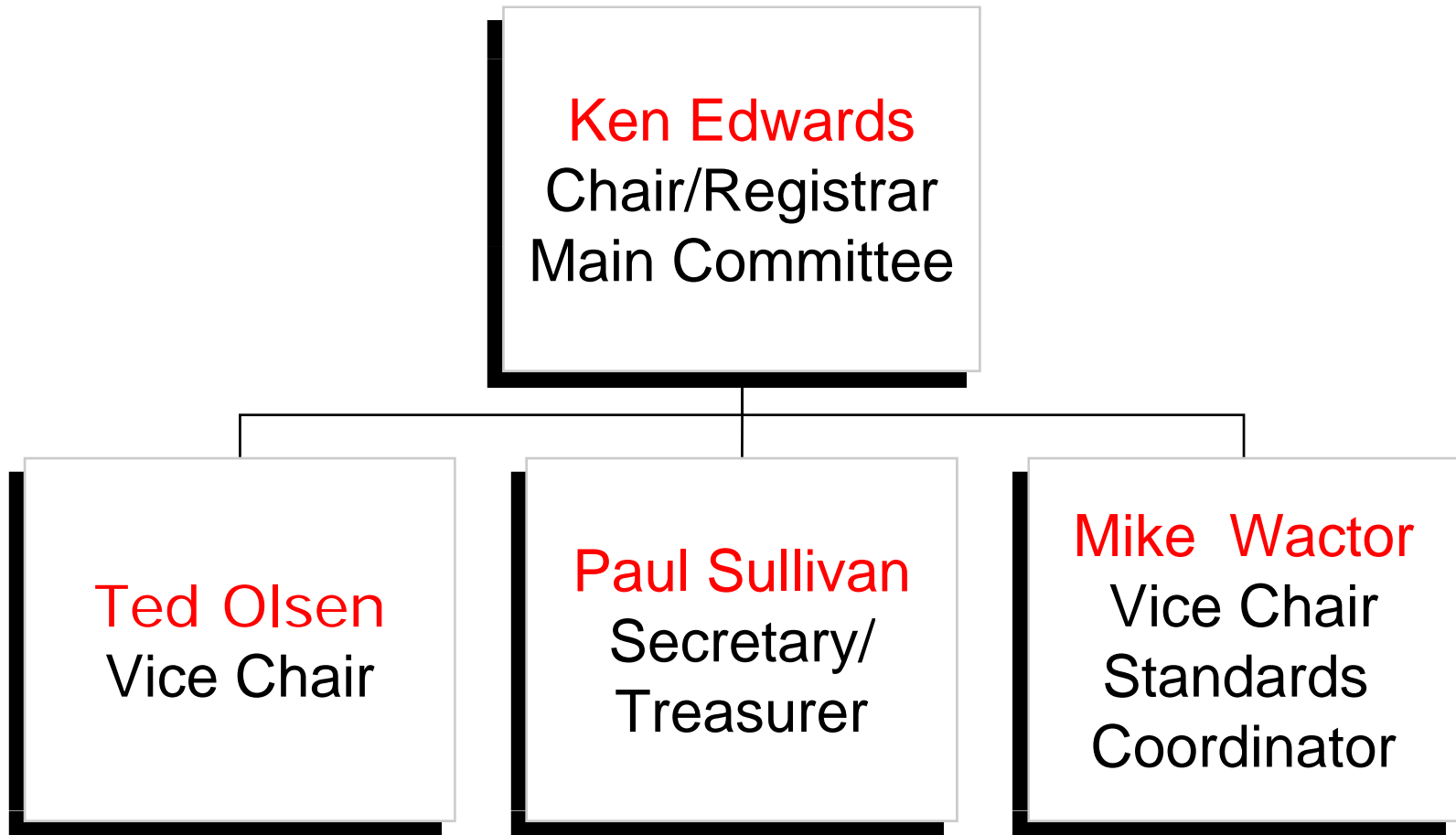
Switchgear Committee Scope

- Automatic reclosers and sectionalizers
- Current limiting devices
- Fuses and cutouts
- Gas-Insulated Switchgear a.k.a., GIS
- Insulation, insulators and hardware for switchgear
- Metal-enclosed buses and all buses included in switchgear assemblies
- Power circuit breakers
- Switches, including pad-mounted switches
- Switchgear assemblies
- Switchgear devices

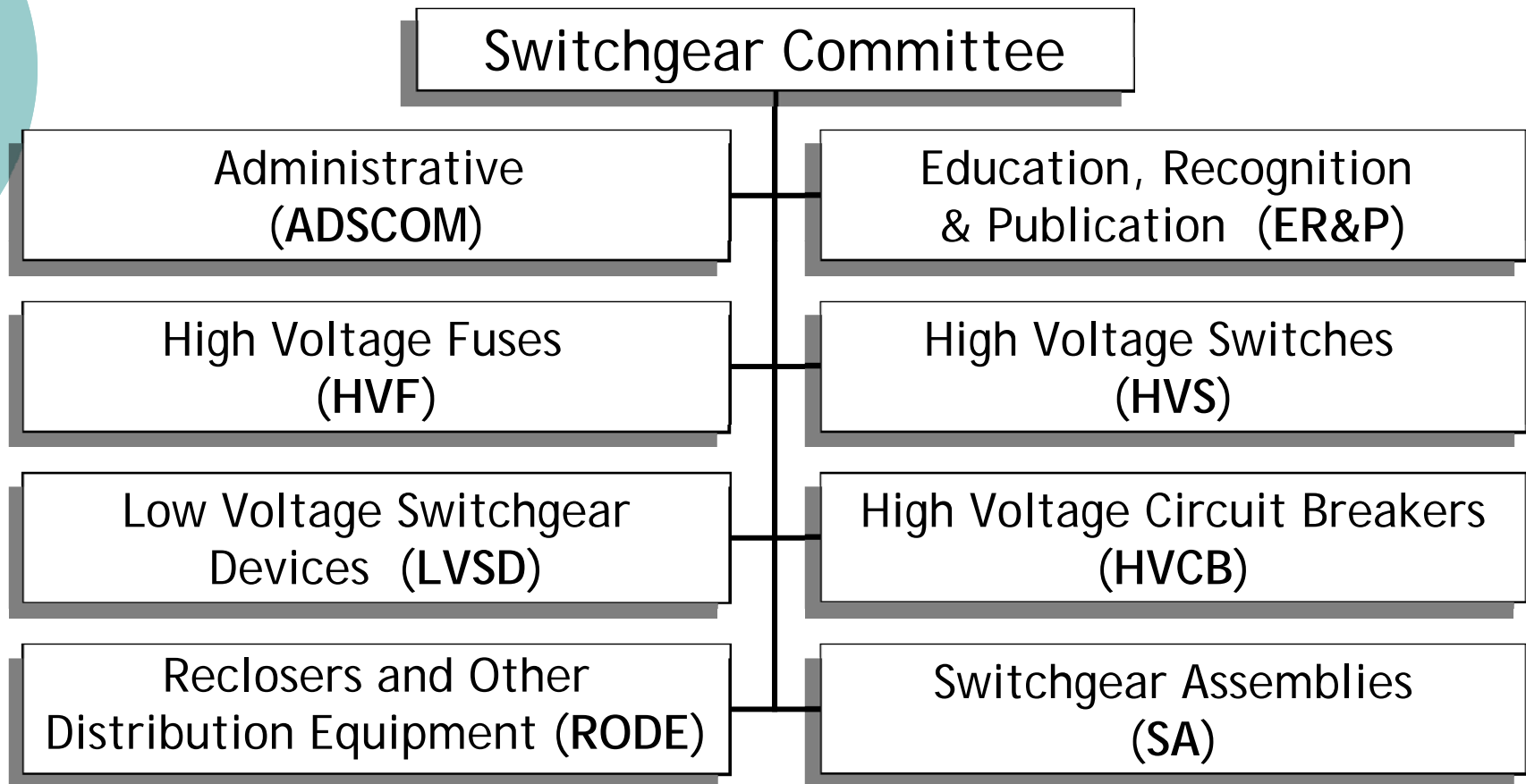
Matters relating to switchgear or switchgear devices for applications covered by another technical committee if emphasis is on particular requirements of the application.



Switchgear Committee Officers



Organization





Activities

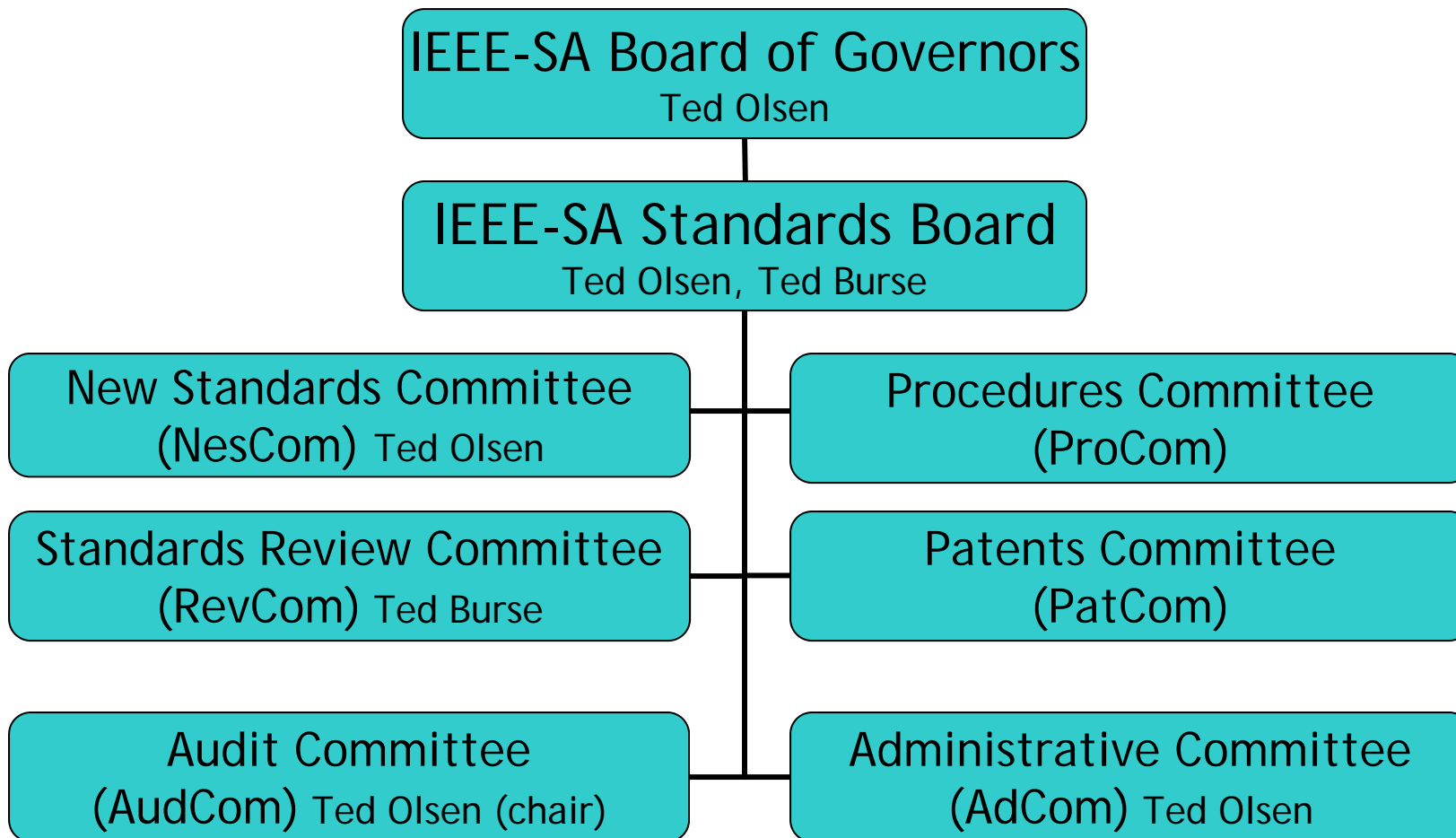
- Create & Maintain IEEE Switchgear Standards (including Standards, Guides, and Recommended Practices)
- Prepare and Review Technical Papers
- Organize Technical Sessions
- Recognize Contributions of Members
- Further the Art of Power Engineering



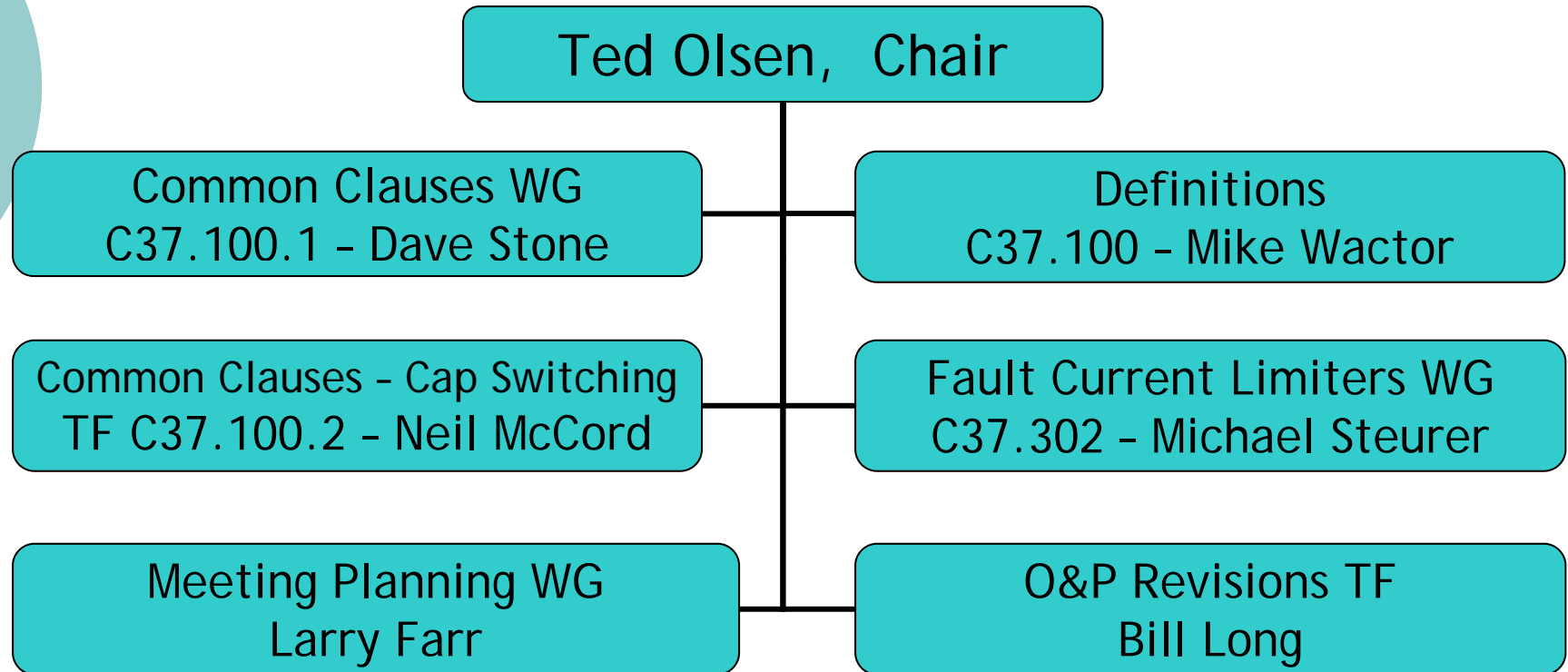
Standards Process

- Create PAR - Project Authorization Request and submit to IEEE-SA New Standards Committee (NesCom)
 - <http://standards.ieee.org/develop/>
- Form Working Group - Create Document
- Issue Invitation to join Ballot Group to overall Ballot Pool, a subset of IEEE Standards Association. [IEEE-SA]
- Finalize Ballot Group and ballot document
- Revise document and recirculate negative ballots as needed to reach a consensus
- Package final balloted draft and backup for IEEE-SA Review Committee (RevCom) & approval by IEEE Standards Board
- Publish as IEEE or IEEE/ANSI Standard
- *(Beginning 2012) Standard must be revised within 10 years - no more reaffirmations at 5-year intervals*

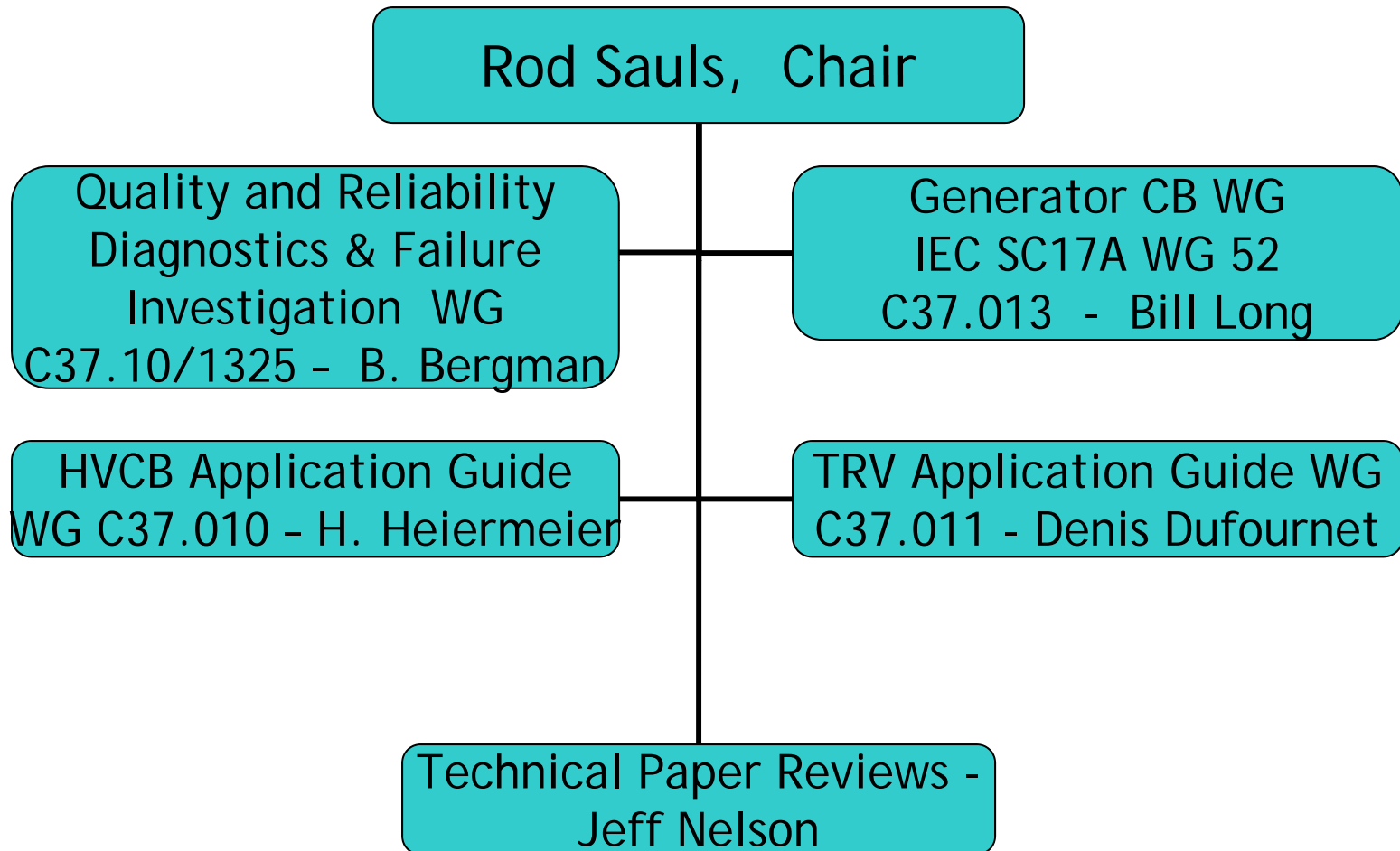
IEEE Standards Association (IEEE-SA)



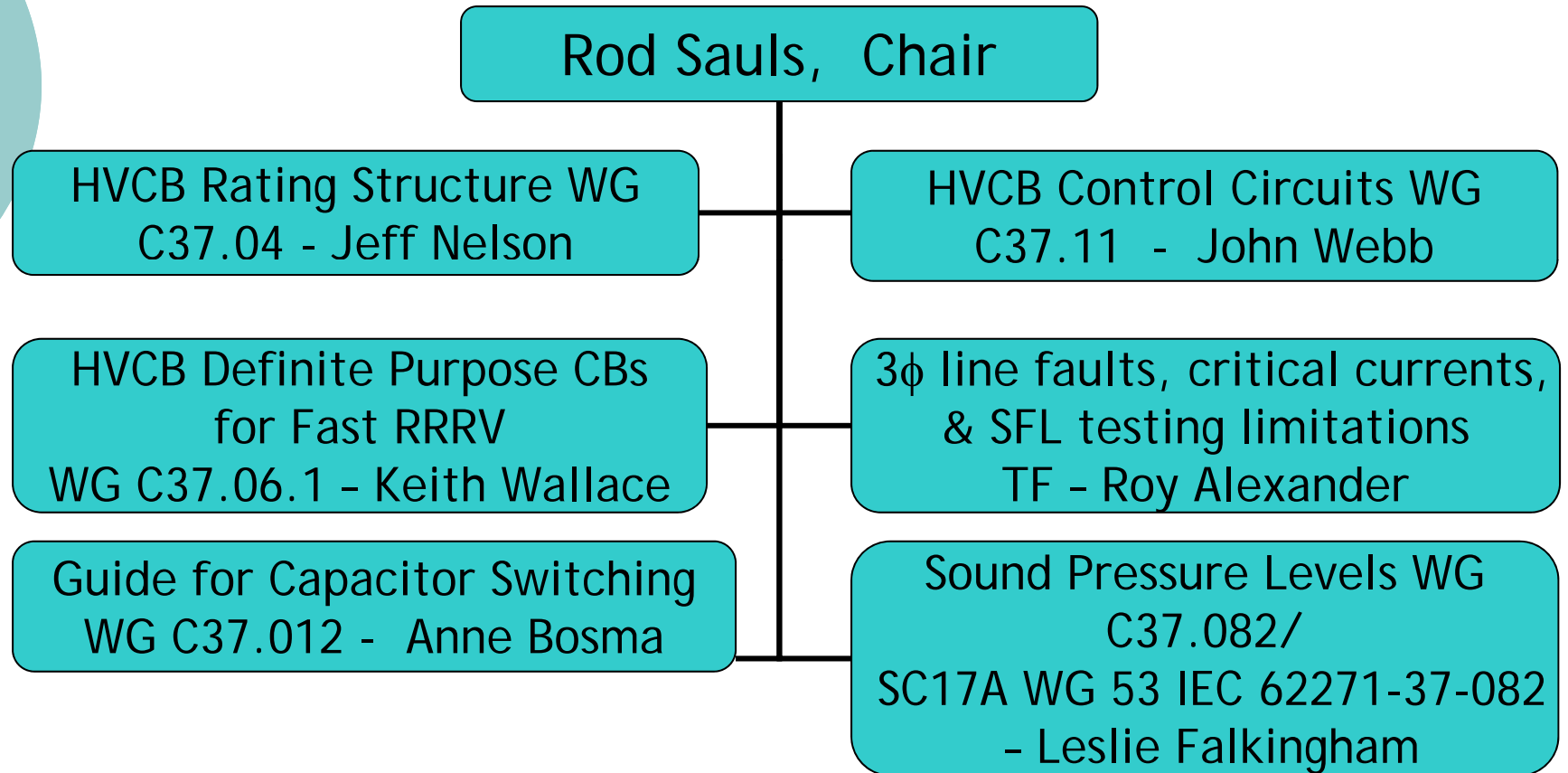
(ADSCOM) Administrative Subcommittee



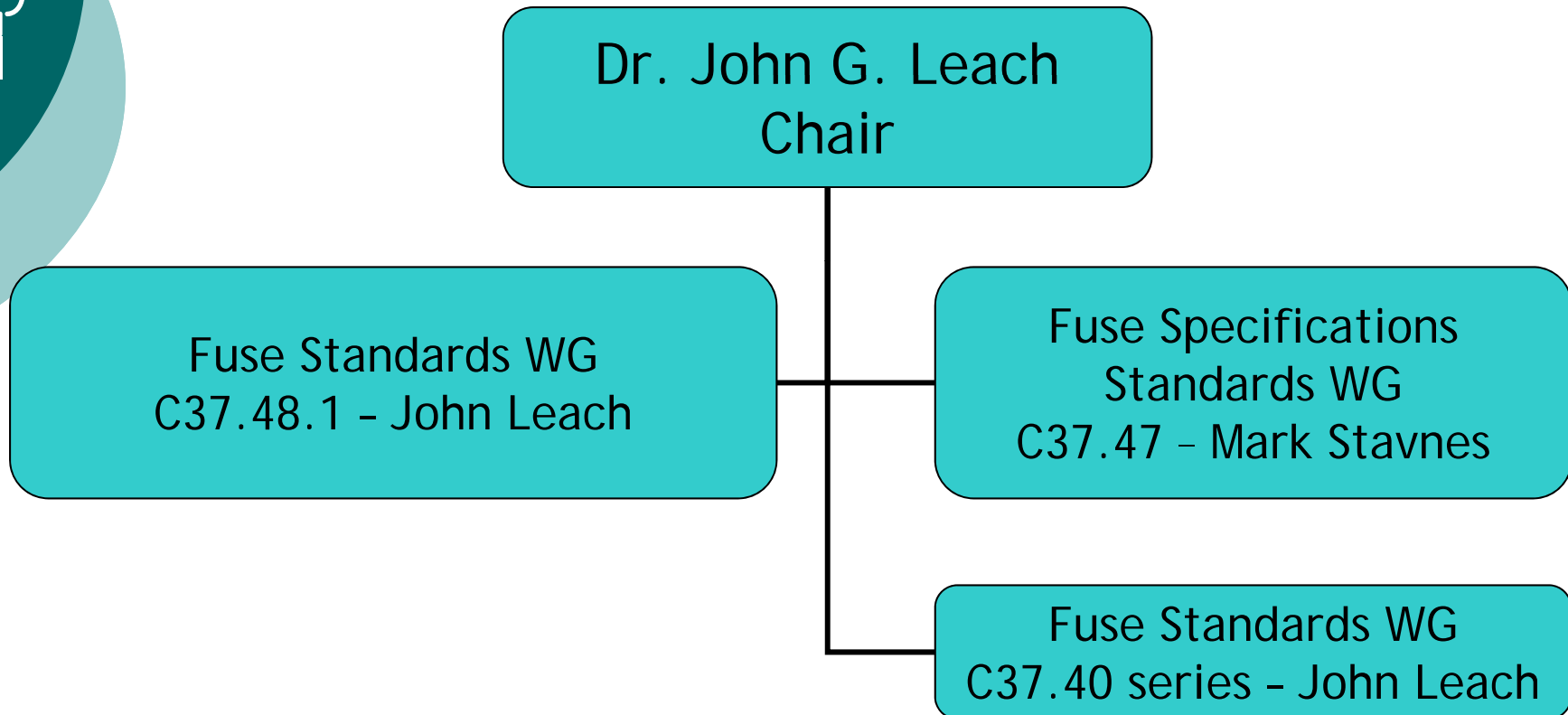
(HVCB) High Voltage Circuit Breaker Subcommittee (1 of 2)



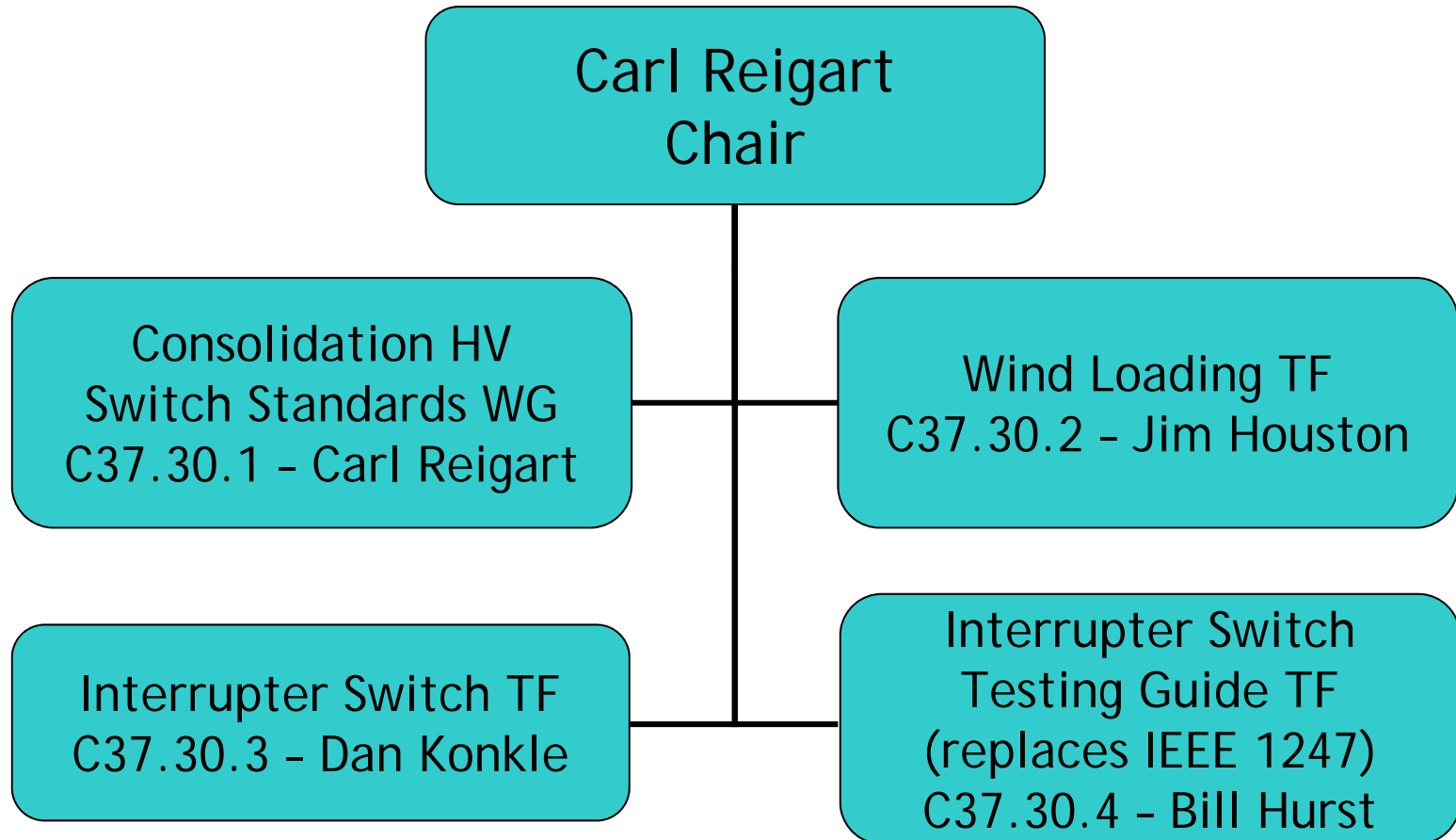
(HVCB) High Voltage Circuit Breaker Subcommittee (2 of 2)



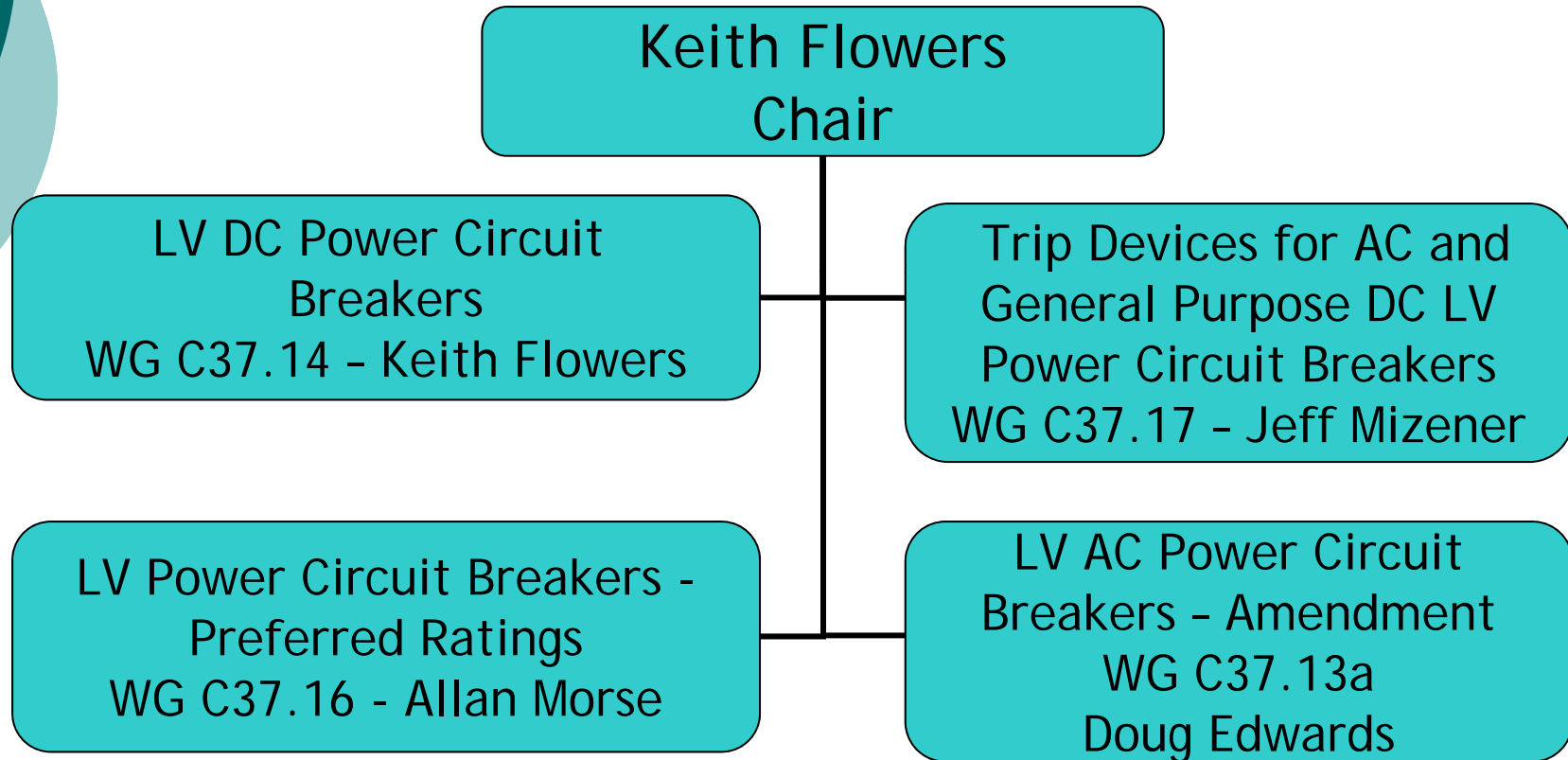
(HVF) High Voltage Fuses Subcommittee



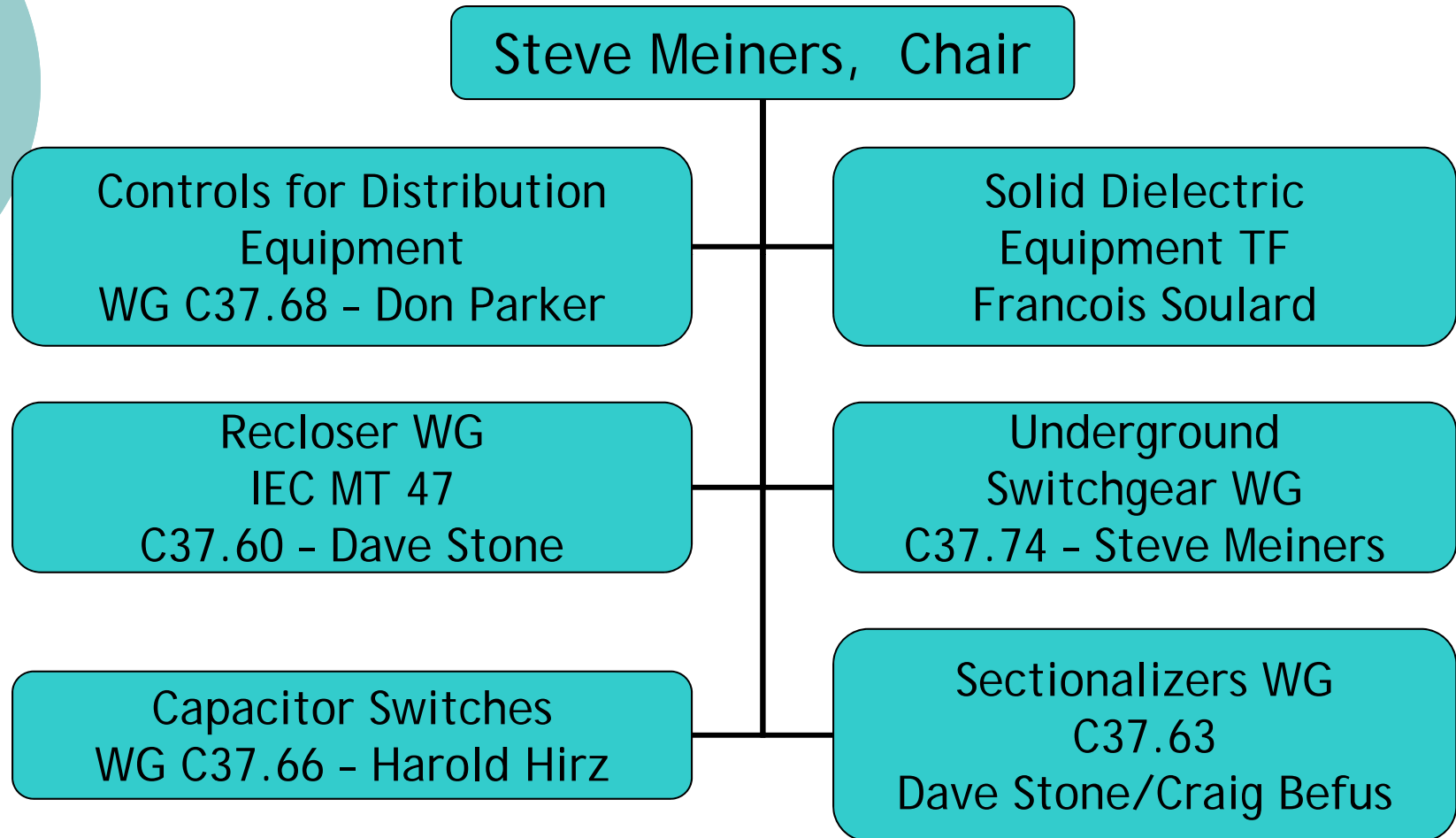
(HVS) High Voltage Switch Subcommittee



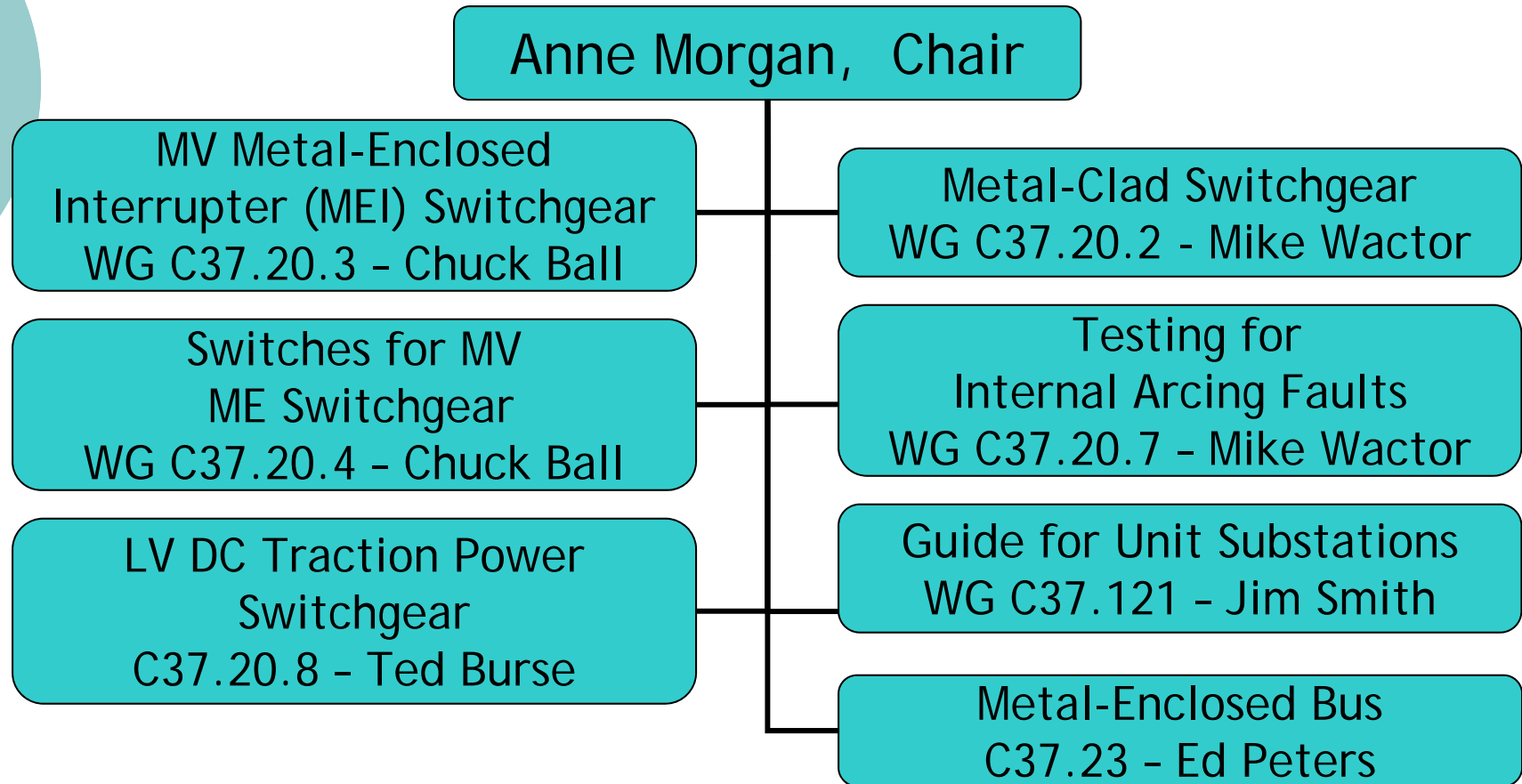
(LVSD) Low Voltage Switchgear Devices Subcommittee



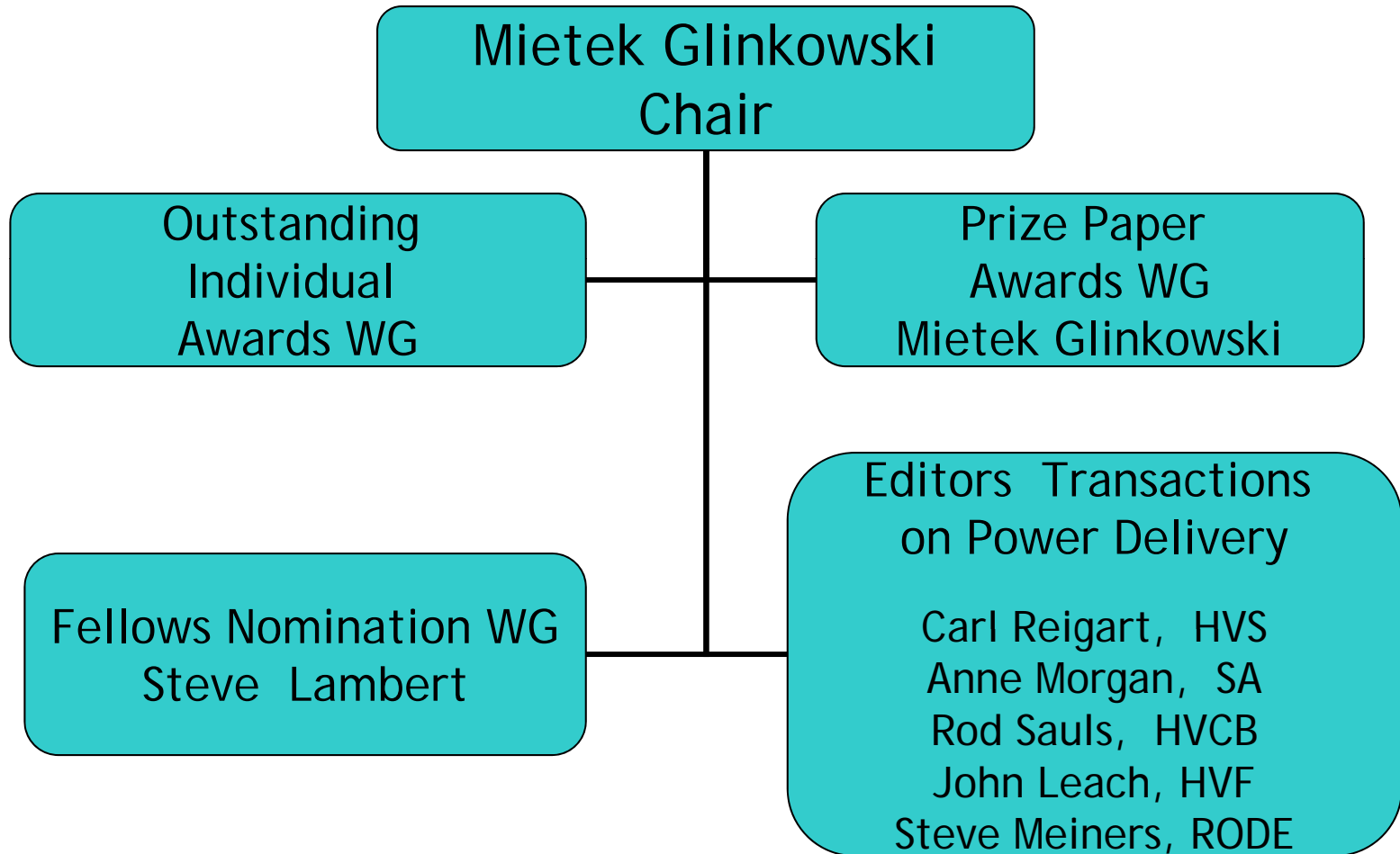
(RODE) Reclosers and Other Distribution Equipment Subcommittee



(SA) Switchgear Assemblies Subcommittee



(ERP) Education, Recognition & Publication Subcommittee





Frequently Asked Questions

Why are some standards identified as ANSI standards, some IEEE, and some IEEE/ANSI? (1 of 3)

- ANSI standards are those APPROVED by one of the processes of the American National Standards Institute.
- ANSI does NOT create standards, but accredits Standards Development Organizations [SDOs, of which there are over 270] such as IEEE, NEMA, UL, and ASTM, by approval of procedures that conform to ANSI “Essential Requirements”
- After approval in the IEEE-SA process, IEEE-SA submits approved IEEE Standards to ANSI for recognition as ANSI Standards.



Frequently Asked Questions

Why are some standards identified as ANSI standards, some IEEE, and some IEEE/ANSI? (2 of 3)

- During ANSI review, the standard is subject to public comment (comments are infrequent).
- With rare exceptions, ALL IEEE Switchgear Standards are recognized as ANSI standards, even if the copy available from IEEE-SA does not say so.
- ANSI audits each SDO for compliance with the Essential Requirements, usually every five years.
- NEMA, UL, ASTM, etc. and other ANSI-accredited SDOs are subject to the same rules that ANSI applies to IEEE-SA.



Frequently Asked Questions

Why are some standards identified as ANSI standards, some IEEE, and some IEEE/ANSI? (3 of 3)

- ANSI recognizes three methods:
 - organization, e.g., IEEE
 - accredited committee, e.g., ASC C37, ASC C2, etc.
 - accredited canvass, e.g., NETA.
- In the view of many in the Switchgear Committee, the accredited canvass method is not as effective as the accredited organization method, as the canvass method may submerge views of interested parties.



Frequently Asked Questions

Are Working Group Meetings Open?

- Generally, ALL IEEE PES Switchgear Committee meetings are **OPEN** to **all who register** for the meetings. **Observers** are encouraged and **welcome** to attend.
- There are a few meetings of other groups and of certain committees, **marked with " * "** on the schedule, which are **by invitation only**.



Frequently Asked Questions

Are any meetings **CLOSED**?

YES. Meetings, marked with " * " on the schedule, which are **by invitation only**:

- Most **IEC**, **CIGRÉ** and **STL** meetings are restricted in this way, and observers are welcome **ONLY** at the **pleasure of the chair**.
- The ER&P meeting is closed.
- Visitors are welcome at **STLNA** meetings, however, **please discuss your desire to attend with the chair in advance**, to be sure we have enough chairs.



Frequently Asked Questions

How do I become a member of a ballot pool?

You do **NOT** have to be a member of the Switchgear Committee to review and ballot Switchgear Committee standards.

- You **DO** have to join the IEEE-Standards Association, IEEE-SA (IEEE member + \$49 for 2012)
- Create an IEEE-SA web account (no cost)
- Include the Switchgear Committee in your interest profile
- Respond to ballot group invitations when issued, joining those ballot groups in which you have an interest. Joining a ballot group imposes an obligation to participate.



Frequently Asked Questions

How do I become a member of a Working Group?

- Choose a subject you would like to work on
- Go to the Working Group Meeting
- Make the chair aware that you want to be a Working Group member
- Volunteer for an assignment
(and complete it on time)
- Working Group membership is at the discretion of the chair



Frequently Asked Questions

How do I become a member of a Subcommittee?

- Become a productive member of a Working Group or Task Force over a continuing period
- Ask the WG or TF chair to nominate you, for Subcommittee member
- Subcommittee membership is at the discretion of the chair



Frequently Asked Questions

How do I become a member of the Main Committee?

- Be a productive member of a subcommittee for at least two years, and attend Main Committee meetings (at least four of last six)
- IEEE Standards Association (IEEE-SA) membership is required for all Switchgear Main Committee members (\$49 in 2012)
- Ask the Subcommittee chair to nominate you for membership in the Main Committee
- Main Committee membership is at the discretion of the chair



Frequently Asked Questions

Why do some peoples name badges have **RED LINES** on them?

- These people are Officers of the Committee, including Subcommittee Chairs
- Feel free to ask them questions about how the committee operates.

How about the **Green Letters** on the badges?

- These letters indicate which activities the attendee selected during registration.



Frequently Asked Questions

What is AMS?

- AMS is the **A**ssociation **M**anagement **S**ystem.
- This system keeps track of all of our members and guests.
- It is a mailing system and meeting registration system also.
- You enrolled to register for this meeting.
- The following slides will show some common mistakes.
- Please do not create a new profile if you cannot find your password, contact Ken Edwards and he can help.
- E-mail System Problems?



Frequently Asked Questions

What is wrong with this Name Badge?

IEEE/PES
Switchgear Committee
May 3 – 7, 2009



KEN EDWARDS

Edwards



Bonneville Power Administration

Asheville, NC

SL



Frequently Asked Questions

This is where it came from.

ORGANIZATION | **MEMBERSHIP** | **EVENTS** | **REGISTRATION** | **MAILINGS** | **REPORTS** | **HELP**

MEMBERSHIP | **Edit Profile**

Individual. To reduce the chance of this information being used for commercial purposes, it cannot be viewed in format, but can only be accessed one record at a time.

Profile Information

* Fields with this icon are highly recommended.

* First/Given Name:

Middle Initial:

* Last/Family/Surname:

Enter the name to appear on your name badge at meetings (your first/given name or nickname only, not your last/family name). This name will appear in large characters on your name badge. Your last/family name will appear beneath it in smaller characters.:

*

* Company Name:

Position/Title:

Postal Address (street address and postal code are not available for viewing by Committee Mem

* Street Address:

Membership Center

- Enroll
- Edit Profile
- Renew
- Change Membership
- Member Activity
- Download Directory
- Payment Due
- Search by Profile
- Search by Invoice

Support

Sign Out

Copyright ©1998-2009
123Signup AMS, Inc.
All rights reserved.

For the Social Wednesday **6:15 PM**

- Dinner and Entertainment – General Jackson Showboat.
- Please meet in the lobby of the hotel at 5:15-5:30 PM. Buses will depart shortly after for the General Jackson Showboat.





Future Meetings

- Spring 2012 – Apr 28–May 4, TradeWinds Island Grand, St. Pete Beach, FL
- Fall 2012 – Sept 30-Oct 5, Catamaran Resort Hotel, San Diego, CA
- Spring 2013 – (tentative) Galveston
- Fall 2013 – Will it be your city?



Thank YOU, Supporters

- ABB
- Alstom
- Cooper Power Systems
- Eaton
- G&W Electric
- HICO Hyosung
- Mitsubishi Electric
- NEMA
- Powell
- S & C Electric
- **Schneider**
- Siemens
- Southern States



Website

PLEASE Visit our website regularly
to keep in touch

<http://www.ewh.ieee.org/soc/pes/switchgear/index.htm>



Wireless Access in Meeting Rooms

Wireless Internet access in each of our meeting rooms.

We have limited bandwidth,
so please, when you use the wireless,
get on and back off quickly
as a courtesy to the rest of the participants.

Use the Switchgear network

Password: sparks