



IEEE

MADISON SECTION NEWSLETTER

VOLUME 11, NUMBER 7

SERVING IEEE MEMBERS OF SOUTH CENTRAL WISCONSIN

OCTOBER 2008

Cedar Ridge Wind Farm and Substation Tour



Date/Time: Monday, October 20, 2008, 8:30 AM - 4:30 PM

Speakers: Mitch Bradt, PE, Program Director, University of Wisconsin-Madison
Pat Riley, PE, Project Manager-Wind Energy, Alliant Energy
Steve Saylor, PE, Chief Electrical Engineer, Vestas Americas
Steve Williams, Senior Engineer, S&C Electric

Location: Board Coach USA/VanGalder Bus in front of Engineering Hall,
1415 Engineering Drive, Madison
Parking is available in Lot 17 adjacent to Engineering Hall (\$8.00)

Lunch: We will stop at Fisherman's Cove Restaurant (N9176 Highway 151, Fond du Lac, WI) for lunch.

Cost: \$15.00 (Student IEEE members are FREE)

RSVP: by October 13th to Mitch Bradt via e-mail (bradt@wisc.edu) with your choice of lunch option - fish, chicken, or veggie (see below for detailed menu)

Non-member guests are always welcome! Space is limited!

Background on Cedar Ridge: Construction is nearing completion at Cedar Ridge Wind Farm in Fond du Lac County, Wisconsin. On May 9, 2007 Wisconsin Power and Light Company (WPL), and Alliant Energy Company, received unanimous approval from the Public Service Commission of Wisconsin (PSCW) to build Cedar Ridge Wind Farm in the Towns of Eden and Empire in Fond du Lac County. Ground was officially broken in October 2007, and construction is nearing completion as turbine erection winds down on the 7,800 acre site. Cedar Ridge Wind Farm has 41 turbines that will produce approximately 68 MW of electricity.

Mitch and Pat will give short presentations on wind power, and on Cedar Ridge in particular. The farm is comprised on 41 Vestas V-82 (Type 1) 1.65 MW generators. The windfarm balance-of-plant includes an S&C D-STATCOM for grid regulation compliance. We will visit both the turbines and the substation. If we are able to visit the Forward wind farm, we will get to see the GE 1.5 MW (Type 3) generators, as well as the substation.

For more information visit the Cedar Ridge website at <<http://www.alliantenergy.com/docs/groups/public/documents/pub/p015392.hcsp>>.

Note: You must wear closed-toe shoes (i.e. no sandals) and boots are recommended. If you own a hard-hat, please bring it. Alliant does have hard hats on site, but we are a bigger group than normal.

Itinerary	
8:00 am	bus arrives at Engineering Hall
8:30 am	bus departs continental breakfast provided on bus drive to Cedar Ridge Wind Farm located near town of Eden presentation and video related to wind energy on bus
10:20 am	arrive at Cedar Ridge Wind Farm visit substation, maintenance building, and erected turbine
12:30 pm	depart Cedar Ridge
12:50 pm	arrive at Fisherman's Cove Restaurant eat from a set meal of plated salads and one of the following three meal options: <ul style="list-style-type: none"> • Fish: Orange Roughy Ala Greque - Orange Roughy Sauteed With Roma Tomatoes, Capers, Green Onions, Fresh Basil, Sun-dried Tomatoes, and Lemon Zest In A White Wine Feta Cheese Cream Sauce • Chicken: Mediterranean Chicken - Sauteed Chicken Breast With Roma Tomatoes, Fresh Basil, and Sun-Dried Tomatoes In A Feta Cheese White Wine Sauce • Veggie: Sauteed Vegetable Stuffed Crepes With A Light Ricotta, Baked With An Asiago Marinara Sherry Cream Sauce
2:20 pm	depart restaurant
4:10 pm	back at Engineering Hall



Upcoming 2008 Short Courses for Engineers and Other Technical Professionals

- **Planning and Implementing Microwave Radio for Next Generation Networks**
October 7–9, 2008 in Madison, WI
- **Electrical Grounding of Communications Systems**
October 14–16, 2008 in Madison, WI
- **Understanding and Troubleshooting VoIP Networks**
October 21–22, 2008 in Madison, WI
- **Basic Telephony and Digital Switching**
November 11–14, 2008 in Madison, WI
- **Effectively Managing Technical Teams**
November 18–20, 2008 in Madison, WI

For further information...

Web: epd.engr.wisc.edu or E-mail: danbeck@engr.wisc.edu
College of Engineering Department of Engineering Professional Development

IEEE MADISON SECTION NEWSLETTER

Published 9 times per year (Jan. - May & Sep. - Dec.) by the Madison, Wisconsin Section of the Institute of Electrical and Electronic Engineers (IEEE), as a service to its members in south-central Wisconsin.

Printing and mailing by: SprintPrint
2790 S. Fish Hatchery Rd.
Madison, WI 53711

Mailed at Madison, Wisconsin as 3rd Class, Non-Profit postage. Permit No. 953.

Online at <http://www.bugsoft.com/ieee/>

For address changes: notify IEEE headquarters, address-change@ieee.org or <http://www.ieee.org>

For advertising information:
contact Mitch Bradt, bradt@wisc.edu, 608.263.1085

For editorial comment:
contact Craig Heilman, cheilman@ieee.org, 608.424.6860

Permission to copy without fee all or part of any material without a copyright notice is granted provided that the copies are not made or distributed for direct commercial advantage, and the title of the publication and its date appear on each copy. To copy material with a copyright notice requires specific permission. Please direct all inquiries or requests to IEEE Copyrights Office.

Three Retirement Challenges the Experts Never Told You About

by Maria K. Malayter, Ph.D.

When it comes to retirement, it's not just what you have that matters, but how you re-invent yourself so that you retire with a sense of meaningfulness and significance. Continuous learning is one of three key ways to do that, according to the research findings tracking retiree and retirement trends since 1993.

The Baby Boomers, who will live another 20 or more years after retirement, are demanding a full and rewarding second life that will be very different from the one they're leaving behind. During my work as a health and wellness instructor at Great Lakes Naval Station, Great Lakes, Ill., I conducted considerable research with men and women transitioning out of the work force. The prevailing notion is that retirees and older individuals are primarily concerned about money and health issues. While those issues are certainly high on the retirees' list of concerns, the research I conducted shows that they are not their only worries. The retirees and Baby Boomers now exiting the work force are also hoping to find fulfillment in this new stage of life, and many will remain in the work force, with new career focuses and pursuing new and exciting endeavors.

The Three Challenges to Finding Fulfillment

My research began informally at the Great Lakes Naval Training Center and in my classes at National-Louis University and Webster University. For the exploratory study, I collected oral histories from retired women and men in the Chicago metropolitan area as they transitioned into retirement. The interview participants took part in in-depth, semi-structured interviews. Several themes emerged from these interviews about the real retirement experience.

The study found that retirees who find retirement richly rewarding had to first re-invent themselves for this new life cycle. By doing so, they find themselves seeking out one or more of the following:

1. **The deep desire and continued need for relationships and companionship:** For many, retirement is a period of soul-searching and transformation. Companions can often provide guidance, and help define a new personal identity outside of work. This desire often extends beyond what spouse or life partners can offer. Many Boomer retirees find they need to forge new relationships and develop new companions through hobby-related activities, volunteer work or social activities. Some return to part-time jobs or second careers to fulfill this need. Such social supports help retirees keep track of each other's lives, which provides another reason to live and stay healthy so they can continue to contribute.
2. **A continued yearning to learn:** To validate this finding, one need only look at the number of older Americans and retirees attending college or continuing education programs. More than three hundred U.S. colleges have established "learning in retirement" programs to meet older adults' need to be intellectually challenged. Many community colleges are establishing courses to support Marc Freedman's Encore Careers [www.encore.org].
3. **Spiritual and holistic well-being:** To find meaning in retirement, retirees often return to faith-based endeavors or pursue personal spiritual matters to address well-being issues. Many find that such endeavors help to replace the emptiness that can accompany retire-

ment, after the prestige, position and power of career no longer provide that sense purpose. Time spent in retirement can make up for perceived missed opportunities due to work commitments. Embracing spiritual matters helps many experience transformation and happiness as they enter retirement.

These three challenges are often overlooked when people plan for their retirement. Older workers are bombarded with retirement advice about money, health and relocation issues, yet somehow we have forgotten that in retirement, the need for relationships, the thirst for learning, and the desire for meaning become major challenges that retirees struggle to fulfill.

Boomers: Visions of the New Retirement, published by iUniverse, includes these and other research findings. *Boomers* challenges retiring individuals, businesses, universities and other organizations to

“rethink” the stereotypical retirement, and to plan accordingly for the surge of Baby Boomers heading into retirement. It allows for proactive thinking in reprogramming to serve this new revolution in retirement and to actively keep retirees involved in society. Government and private projects are being created to engage the Baby Boomers in civic activities, such as volunteerism, where they can continue to learn and work in the second half of life.

Impact on the Workplace

The new vision of retirement is going to force major changes to the services that human resources professionals offer to their retiring employees. For example, some Boomers are already choosing to retire because they want more time to pursue other passions. Employers can respond to this demand by re-evaluating flexible work schedules and part-time employment to retain valuable employees and their organizational knowledge. As the Boomers exit the work force, organizations will want to create a succession plan for how they might retain Boomers’ institutional and operational knowledge.

Some corporations are already experiencing the loss of organizational knowledge as retirements increase, so they are creating opportunities to invite the retirees back to mentor new leaders. In 2004, McDonald’s corporation invited a retired cook who worked alongside of founder Ray Kroc to help McDonald’s improve its profitability. Retired Fred Turner could taste in the products where the corporation had cut costs and lost touch with McDonald’s original roots. First, he located the original creator of the signature special sauce of the Big Mac and then recovered old business practices to entice long-term customers to return to McDonald’s. Inviting Turner back for the consulting gig was costly to the corporation, but the move has paid off through increased revenue, and got the company back in touch with its organizational legacy.

As more people head toward retirement, new dimensions of planning are encouraged to expand beyond the normal topics of finances and health. When it comes to retirement planning, you can never start too early. It is wise to combine traditional life planning topics and wellness topics to build an enriching, stable and positive retirement.

Maria Malayter, PhD. is the Director of the Center for Positive Aging and an Assistant Professor of Applied Behavioral Sciences at National-Louis University, Chicago. She previously served as an Assistant Dean for the College of Arts and Sciences before she retired to build the Center for Positive Aging. Comments may be submitted to todaysengineer@ieec.org.

To find out more about the Center for Positive Aging, please visit www.nl.edu//positiveaging or Maria K. Malayter, Ph.D. at mmalayter@nl.edu.

Opinions expressed are the author’s.



Experts in Medical Device Testing since 1983.

Comprehensive

We provide EMC and Safety testing for many global standards, including FDA requirements and Medical Device Directive.



Knowledgeable

Our NARTE certified test engineers know the latest changes in U.S. and global standards for medical devices.



Dependable

We provide problem solving and mitigation throughout testing at no extra cost to ensure your product meets applicable standards.



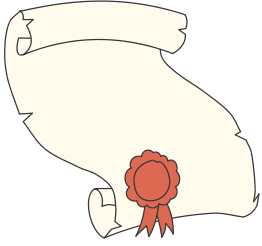
Flexible

We work hard to meet your scheduling needs, ensuring speed to market and saving you time and money.

1250 Peterson Drive, Wheeling, IL 60090
166 South Carter Street, Genoa City, WI 53128
www.dlsemc.com 847-537-6400

Member Awards

Congratulations to IEEE Madison Section members Thomas Jahns and John Booske on their recent awards. On June 21, Grainger Professor of Power Electronics and Electric Machines Thomas Jahns received the 2007 IEEE Power Electronics Society Distinguished Service Award. Duane H. and Dorothy M. Bluemke Professor John Booske was elevated to the rank of IEEE Fellow in 2007.



Reach over 700 IEEE members in South-Central Wisconsin with information on your products and services every month with an ad in this newsletter.

Our members have professional interests in computers, power engineering, signal processing, communications, industry applications and a number of other technical fields.

For more information, contact Mitch Bradt at 608.263.1085 or bradt@wisc.edu.

Per issue ad rates:	1 Time	2 Times	5 Times	9 Times
1/16 Page (3.5 x 1.125)	\$ 53	46	42	40
1/8 Page (7 x 1.125 or 3.5 x 2.25)	82	74	68	67
1/4 Page (7 x 2.25 or 3.5 x 4.5)	129	118	112	110
1/2 Page (7 x 4.5 or 3.5 x 9)	205	192	185	183
Full Page (7 x 9)	330	315	306	303

Member Awards

Three Retirement Challenges the Experts Never Told You About

Meeting Notices

WHAT'S INSIDE

2790 S. Fish Hatchery
Madison, WI 53711

