

with and without concomitant AF could improve the detection of LVDys.

**Purpose** To compare the predictive value of clinical characteristics, ECG parameters, and NT-proBNP for prediction of LVDys in patients with and without concomitant AF. We also compared the performance of 6 other common cardiac biomarkers which have been associated with AF.

**Methods** ECGs from 1487 patients (36% with LVDys, 39% female, 44% with AF, mean [SD] age 68[12] years) presenting to a large teaching hospital were analysed for abnormalities. All patients underwent a standardised transthoracic echocardiogram to determine left ventricular function at baseline. All biomarkers were centrally quantified from plasma using Elisa assays. Using forward selection and logistic regression, 6 ECG parameters (resting heart rate, QRS, QT, QTc durations, presence of AF, and blocks) were modelled and adjusted for clinical characteristics (age, sex, age:sex interaction, history of myocardial infarction, and hypertension). The inclusion of biomarkers was evaluated by examining the C-statistic and 95% confidence interval.

**Results** In the overall cohort, after adjustment for clinical characteristics, LVDys was associated with increased heart rate (OR per 10 beats increase = 1.20 [95%CI = 1.12–1.28],  $p < 0.001$ ), prolonged QRS interval (OR per 10 ms increase = 1.15 [1.10–1.22],  $p < 0.001$ ) and prolonged QTc (OR per 10 ms increase = 1.08 [1.04–1.11],  $p < 0.001$ ). QRS and QTc remained strongly associated with LVDys in patients with and without AF, while heart rate only distinguished between patients with and without LVDys in patients with AF (OR per 10 beats increase = 1.30 [95%CI = 1.18–1.42],  $p < 0.001$ ), but not in patients in sinus rhythm ( $p = 0.238$ ). NT-proBNP levels were significantly elevated in patients with LVDys compared to no LVDys, and further increased in patients with AF (figure 1a). NT-proBNP, (adjusted for clinical characteristics) performed comparably to ECG and clinical characteristics only (C-statistic = 0.70 [95%CI 0.67–0.73]; figure 1b) to predict LVDys. NT-proBNP outperformed IL-6, Troponin T, GDF15, Creatinine, CRP, and D-dimer even though all biomarkers were elevated in LVDys patients. NT-proBNP combined with ECG parameters improved the C-statistic for patients without AF from 0.70 (95%CI 0.66–0.74) to 0.73 (0.69–0.77) and with AF from 0.76 (0.73–0.80) to 0.77 (0.73–0.81).

**Conclusion (s):** Two ECG parameters obtained from automated analysis (QRS duration and QTc interval), adjusted for a combination of simple clinical characteristics, robustly identify reduced left ventricular function in unselected patients seen in hospital. NT-proBNP contributes a little to improve the identification of LVDys patients on top of these ECG parameters, with a clear need to adjust normal range in the patients presenting with AF.

**Conflict of Interest** None

24

#### CARDIAC ARREST PATIENTS PRESENTING TO HOSPITALS AT WEEKENDS ARE NOT SUBJECT TO THE WEEKEND EFFECT: INSIGHTS FROM THE ACALM BIG DATA, UNITED KINGDOM

<sup>1</sup>Rahul Potluri\*, <sup>2</sup>Ranjit More, <sup>1</sup>Shajil Chaili, <sup>2</sup>Billal Patel, <sup>1</sup>Mark Ainslie, <sup>3</sup>Suresh Chandran. <sup>1</sup>Blackpool Teaching Hospitals; <sup>2</sup>Blackpool Teaching Hospital NHS Foundation Trust; <sup>3</sup>Pennine Acute Hospital NHS Trust

10.1136/heartjnl-2019-BCS.23

**Introduction** Patients presenting to hospital with a cardiac arrest are associated with significant mortality in the United Kingdom. There is widely debated evidence to support a “weekend-effect” with mortality rates elevated for patients admitted to hospital on the weekend. However, cardiac arrest teams are on call in every acute hospital 24 hours a day, all year round and the evidence for the weekend affect involving cardiac arrests is unclear.

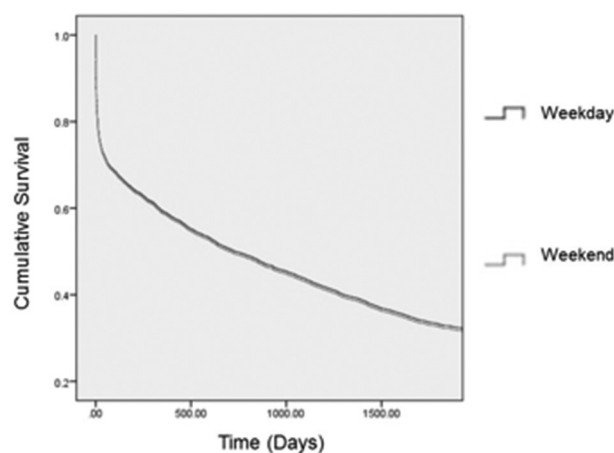
**Purpose** To investigate the impact of weekend admission on patients presenting with a cardiac arrest to hospital on mortality utilising ACALM big data.

**Methods** Anonymous information on patients presenting to hospital with a cardiac arrest was obtained from several hospitals in England, UK between 1st January 2000 and 30th June 2014. This data was processed and analysed according to the ACALM (Algorithm for Comorbidities, Associations, Length of stay and Mortality) study protocol. ICD-10 and OPCS-4 codes were used to trace patients coded for cardiac arrest, day of admission, patient demographics, prevalence of co-morbidities and mortality data. Kaplan-Meier survival curves and cox regression analyses adjusted for age, gender, ethnicity, Charlson comorbidity index and the top ten contributors to mortality in the UK (Ischaemic Heart Disease, Heart Failure, Bowel cancer, Breast cancer, Lung cancer, Pneumonia, Cerebrovascular disease, Chronic Obstructive Pulmonary Disease and Dementia).

**Results** There were 4803 patients who presented with cardiac arrest with the majority, 81% of patients were admitted on weekdays. Demographics, co-morbidities and mortality for patients admitted on weekdays and weekends are shown in table 1. Figure 1 shows the Kaplan-Meier survival curve for patients discharged according to weekday/weekend discharge. Cox regression model including age, gender, ethnic group, Charlson comorbidity index and the top ten causes of death in the UK showed that weekend presentation did not contribute to increased mortality (OR 1.01; 95%CI 0.94–1.11;  $p = 0.692$ )

**Conclusion** We have demonstrated that the weekend effect is not shown in patients presenting to hospital with cardiac arrests. Our findings can perhaps be explained by the presence of 24/7 cardiac arrest teams present in acute hospitals.

**Conflict of Interest** Nil



**Abstract 24 Figure 1** 5 year survival for cardiac arrest patients presenting to hospital at weekdays vs weekends