



OPEN ACCESS



Open Access
Scan to access more
free content

Do variations in hospital mortality patterns after weekend admission reflect reduced quality of care or different patient cohorts? A population-based study

Oscar Perez Concha,¹ Blanca Gallego,¹ Ken Hillman,^{2,3} Geoff P Delaney,⁴ Enrico Coiera¹

► Additional material is published online only. To view please visit the journal online (<http://dx.doi.org/10.1136/bmjqs-2013-002218>).

¹Centre for Health Informatics, Australian Institute of Health Innovation, University of New South Wales, Kensington, New South Wales, Australia

²SWS Clinical School, Liverpool Hospital, University of New South Wales, Kensington, New South Wales, Australia

³The Simpson Centre for Health Services Research, Australian Institute of Health Innovation, University of New South Wales, Kensington, New South Wales, Australia

⁴Sydney South West Local Health District, Department of Radiation Oncology, Cancer Therapy Centre, Liverpool Hospital, Liverpool, New South Wales, Australia

Correspondence to

Professor Enrico Coiera, Centre for Health Informatics, Australian Institute of Health Innovation, Level 1, AGSM Building, G27, University of New South Wales, Kensington, NSW 2052, Australia; e.coiera@unsw.edu.au

Received 9 June 2013

Revised 15 September 2013

Accepted 21 September 2013

Published Online First

25 October 2013

To cite: Concha OP, Gallego B, Hillman K, *et al.* *BMJ Qual Saf* 2014;**23**: 215–222.

ABSTRACT

Background Proposed causes for increased mortality following weekend admission (the ‘weekend effect’) include poorer quality of care and sicker patients. The aim of this study was to analyse the 7 days post-admission time patterns of excess mortality following weekend admission to identify whether distinct patterns exist for patients depending upon the relative contribution of poorer quality of care (care effect) or a case selection bias for patients presenting on weekends (patient effect).

Methods Emergency department admissions to all 501 hospitals in New South Wales, Australia, between 2000 and 2007 were linked to the Death Registry and analysed. There were a total of 3 381 962 admissions for 539 122 patients and 64 789 deaths at 1 week after admission. We computed excess mortality risk curves for weekend over weekday admissions, adjusting for age, sex, comorbidity (Charlson index) and diagnostic group.

Results Weekends accounted for 27% of all admissions (917 257/3 381 962) and 28% of deaths (18 282/64 789). Sixteen of 430 diagnosis groups had a significantly increased risk of death following weekend admission. They accounted for 40% of all deaths, and demonstrated different temporal excess mortality risk patterns: early care effect (cardiac arrest); care effect washout (eg, pulmonary embolism); patient effect (eg, cancer admissions) and mixed (eg, stroke).

Conclusions The excess mortality patterns of the weekend effect vary widely for different diagnostic groups. Recognising these different patterns should help identify at-risk diagnoses where quality of care can be improved in order to minimise the excess mortality associated with weekend admission.

INTRODUCTION

Many studies have demonstrated the existence of the weekend effect—a higher rate of death following weekend admission to hospital^{1–4}—although not all agree it exists.^{5–8} Diagnosis-specific studies for stroke,^{9–12} acute kidney injury,¹³ pulmonary embolism (PE)¹⁴ and myocardial infarction¹⁵ all have shown a weekend effect (table 1).

The causes of increased mortality associated with weekend admission are likely to be complex. Part of the effect is potentially a selection bias where the cohort of patients admitted on weekends has different characteristics (eg, sicker and older) compared with those admitted on weekdays.^{2–16} Variations in the reported size of the weekend effect may be due to how different analyses correct for any such selection bias. The weekend effect may also reflect lower quality of weekend clinical services—for example, lower staffing levels,^{17–18} the use of locum staff¹⁹ or unavailability of some tests or procedures.¹¹ This may explain why services such as the emergency department (ED) or intensive care unit (ICU) in major hospitals appear relatively ‘protected’ from the weekend effect as many run a similar service across all days.^{7–8}

The clinical impact of delaying a test or a procedure for a weekend admission until a weekday will vary with clinical service and patient condition, as would any impact of delayed or incorrect diagnosis or treatment. As such, death following weekend care may not occur immediately, and some of the

Table 1 Summary of some relevant studies providing evidence for the weekend effect

Author	Odds ratio	95% CI	Group of patients under study (adjustments)
Aylin <i>et al</i> ¹	1.10	1.08 to 1.11	All patients to emergency department (age, sex, socioeconomic deprivation, comorbidity and diagnosis).
Bell <i>et al</i> ³	1.28	1.13 to 1.46	Ruptured abdominal aortic aneurysm (age, sex and Charlson comorbidity index)
Bell <i>et al</i> ³	5.28	1.01 to 27.50	Acute epiglottitis (age, sex and Charlson comorbidity index)
Bell <i>et al</i> ³	1.19	1.03 to 1.36	Pulmonary embolism (age, sex and Charlson comorbidity index)
Palmer <i>et al</i> ¹¹	1.26	1.16 to 1.37	Stroke patients and 7-day in-hospital mortality for Sunday admissions with Monday as a reference (age, sex, socioeconomic deprivation quintile, number of previous admissions, comorbidities, month of discharge, ethnic group, source of admission and stroke type)
James <i>et al</i> ¹²	1.07	1.02 to 1.12	Acute kidney injury (age, sex, race, Charlson comorbidity index and requirement for mechanical ventilation)
Aujesky <i>et al</i> ¹³	1.17	1.03 to 1.34	Pulmonary embolism and 30 days post-discharge (age, sex, and the Charlson comorbidity index)
Hazard ratio			
Fang <i>et al</i> ⁹	1.12	1.00 to 1.25	Stroke patients and 7 days post-discharge (age, sex, stroke severity and comorbidity)
McKinney <i>et al</i> ¹⁰	1.05	1.02 to 1.09	Stroke patients and 90 days post-discharge (patient demographics, coexisting conditions and treatment with intravenous thrombolysis)

heterogeneity in prior studies may reflect the window over which deaths are counted. While most weekend effect studies do not count deaths post-discharge, three studies that did found a significant increase in the risk of death at 7 days,⁹ 30 days¹⁴ and 90 days¹⁰ post-discharge (table 1).

One approach to untangling the relative contribution of patient condition and quality of care is to study the temporal unfolding of the weekend effect on the risk of death per diagnostic group. There are essentially four basic temporal patterns that can be hypothesised from first principles (figure 1). If there is no difference between the cohorts admitted on weekdays and weekends and care is identical for both, then we should see no differences in deaths between the two (H0, figure 1). If the weekend cohort has an intrinsically higher probability of dying independent of the care they receive (patient effect), then its pattern of excess mortality should be

steady over the short run and not reduce when re-exposed to weekday care (H2, figure 1). If the quality of weekend care is the cause of excess mortality (care effect), then a bump in death risk should diminish after re-exposure to weekday care (H1, figure 1). The care effect bump might vary in onset, size and duration. If weekend patients are both sicker and receive poorer care, we would expect a mixed picture with evidence of a temporally localised increase in mortality, settling to a level reflecting the differences in patient condition between both cohorts (H3, figure 1).

In this study the impact of the weekend effect on mortality is examined to see if there are such variations in the 7 days post-admission patterns of risk between weekday and weekend admission patients and, if so, whether they can shed light on the complex association of excess mortality and the weekend admission to hospital.

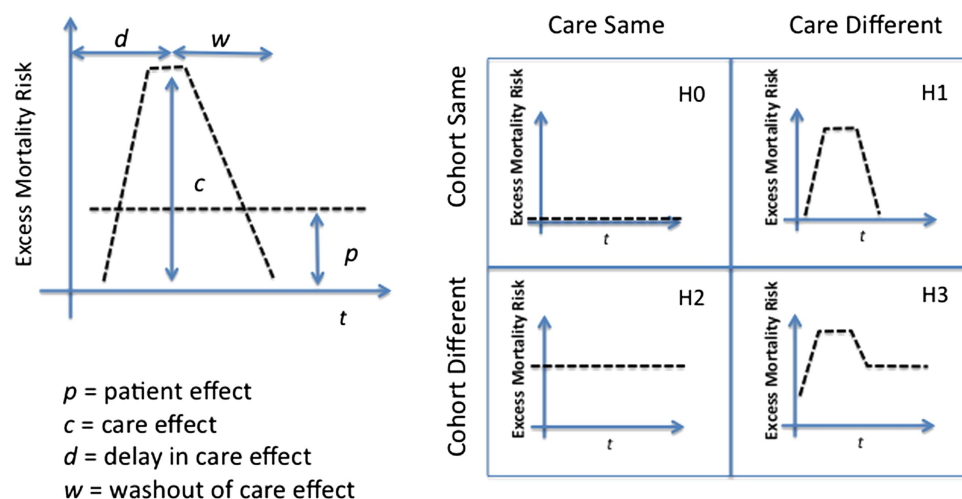


Figure 1 Excess mortality risk associated with weekend admission per diagnosis related group may exhibit different temporal patterns depending on whether the cause is sicker patients (patient effect: H2) or poorer care (care effect: H1).

METHODS

All 3 798 599 admissions through the ED to all 501 public and private hospitals in New South Wales (NSW), Australia between 1 July 2000 and 30 June 2007 were extracted from the NSW Admitted Patient Data Collection. To capture post-discharge deaths, records were linked to the death registry by the NSW Centre for Health Record Linkage.²⁰ Clinical information was coded using the International Classification of Diseases 10th revision Australian modification (ICD-10-AM) and Australian refined diagnosis related group (DRG) codes.²¹

Admission in this study refers to an episode of care that ends in discharge, transfer, death or change in care type. Records with an invalid or missing date of admission, date of death, principal diagnosis, DRG, patient age or sex were excluded. If a patient was hospitalised and readmitted within 1 week of discharge, only the last episode of care is taken into account. The resulting data contain 3 381 962 admissions and 64 789 deaths within 1 week from admission across 539 122 patients (average of 6.3 admissions per patient over 7 years). The Charlson comorbidity index was calculated for each admission using ICD-10-AM codes.^{22 23}

Statistical analysis

To minimise selection bias, admissions were stratified by age, sex, Charlson comorbidity index and DRG. Thus variations in illness severity within a diagnostic and comorbidity group remained unadjusted, since they cannot be estimated from hospital administrative datasets.

A weekend was defined as the period between midnight Friday and midnight Sunday.^{3 11} Mortality rates in the week following admission were estimated by direct standardisation for both weekend and weekday admissions.^{12 24} Gamma methods were used for the CIs of the mortality rates.²⁵ For each DRG, odd ratios (ORs) of death following weekend versus weekday admissions were computed using Mantel–Haenszel statistics.²⁶ Survival curves and hazard ratios (HRs) were calculated for each DRG using Cox statistics.²⁷ Excess mortality risk curves, $e(t)$, were the result of subtracting the probabilities of dying, $f(t)$, if admitted on weekend or weekday, $e(t) = (f_{\text{weekend}}(t) - f_{\text{weekday}}(t))$, at each day post-admission from admission to day 7 after admission, $t = 0 \dots 7$.

Excess deaths for each DRG were calculated as the product of cumulative excess mortality risk and the corresponding number of weekend admissions for that DRG. This represents the number of deaths that could be avoided if there was no weekend effect.

A DRG was categorised as exhibiting a weekend effect if (1) its $OR > 1$, $HR > 1$ and 95% CI intervals were > 1 and p values < 0.01 ; (2) overall number of deaths > 50 ; (3) cumulative excess mortality risk in the week post-admission ≥ 0.005 (5 extra deaths per

1000 weekend admissions). To test for difference in the shape of excess mortality risk curves, root mean square errors between curves were calculated.

In addition, Mantel–Haenszel statistics were calculated separately for in-hospital and post-discharge deaths. The latter only considered patients discharged within 1 week after admission. Statistical analyses were performed with the use of SAS V.9.0 and IBM-SPSS V.20 software.

RESULTS

The mean age of patients was 49 years (median=52.4, percentile 25=26.8, percentile 75=74.6, SD=45.6) and the mean length of stay was 3.8 days (median=1.0, percentile 25=0.0, percentile 75=5.0, SD=8.3). Weekends accounted for 27.1% of all admissions (917 257/3 381 962) and these admissions were associated with 28.2% of all deaths (18 282/64 789). There were statistically significant differences in the characteristics of patients admitted on weekdays and weekends (table 2). After adjusting for these differences, the mortality rate for weekday admissions fell from 1.92% (46 507 deaths) to 1.85% (95% CI 1.85% to 1.85%) and for weekend admissions rose from 2.03% to 2.12%, (95% CI 2.12% to 2.12%) (difference 0.27%, $p < 0.001$). The main drivers for adjustment were the greater age and comorbidity scores of patients admitted on weekdays.

After adjusting by age, sex and comorbidity index, no DRG (of a total of 430) was associated with a reduced risk of death following weekend admissions. Sixteen of the 430 DRGs demonstrated a weekend effect (table 3 and supplementary table S1 in online

Table 2 Baseline characteristics of patients admitted on weekdays and weekend

	Weekday N=2 464 705 (72.9%)	Weekend N=917 257 (27.1%)	χ^2 (p value)
Age (years)			
0–5	8.2	8.9	6575.7 (< 0.001)
6–15	5.6	6.5	
16–35	18.3	21.3	
36–55	19.3	19.0	
56–65	10.6	9.9	
66–75	12.9	11.8	
76–85	16.3	14.8	
≥ 85	8.6	7.9	
Charlson comorbidity score			
Zero to mild (0)	51.7	55.6	4477.7 (< 0.001)
Mild (1–2)	26.1	24.7	
Moderate (3–4)	11.2	10.0	
Severe (≥ 5)	11.0	9.7	
Sex			
Women	50.3	51.9	645.8 (< 0.001)
Men	49.7	48.1	

appendix). These 16 DRGs accounted for 39.7% (25 695/64 789) of all deaths, 40.1% (7325/18 282) of weekend deaths (21 excess deaths per 1000 admissions). Taken as a combined group, these 16 DRGs exhibited a mixed pattern (H3, figure 1 with delay $d=0$) consistent with both patient effect and weekend care contributing to excess mortality (supplementary figure S1 in online appendix).

Analysis of individual excess mortality risk curves for these 16 DRGs revealed a variety of temporal patterns (figure 2 and supplementary figure S2 in online appendix):

1. Care effect (H1): Two patterns demonstrated a brief rise in mortality associated with weekend admission:
 - An early risk pattern in which the majority of excess deaths occurred within the first 24 h after

admission. The only DRG in this category was F70 (Major Arrhythmia and Cardiac Arrest).

- A risk washout pattern showed the greatest impact of weekend admission in the first 48 h, gradually reducing throughout the rest of the week. The three diagnoses in this category were E61 (Pulmonary Embolism), E64 (Pulmonary Oedema and Respiratory Failure) and F65 (Peripheral Vascular Disorders).

2. Patient effect (H2): With the steady risk pattern, the impact of weekend admission was distributed uniformly across the week after admission and appeared not to alter with re-exposure to weekday care. DRGs with this pattern were I65 (Connective Tissue Malignancy, including Pathological Fracture), R60 (Acute Leukemia) and R61 (Lymphoma and Non-Acute Leukaemia).

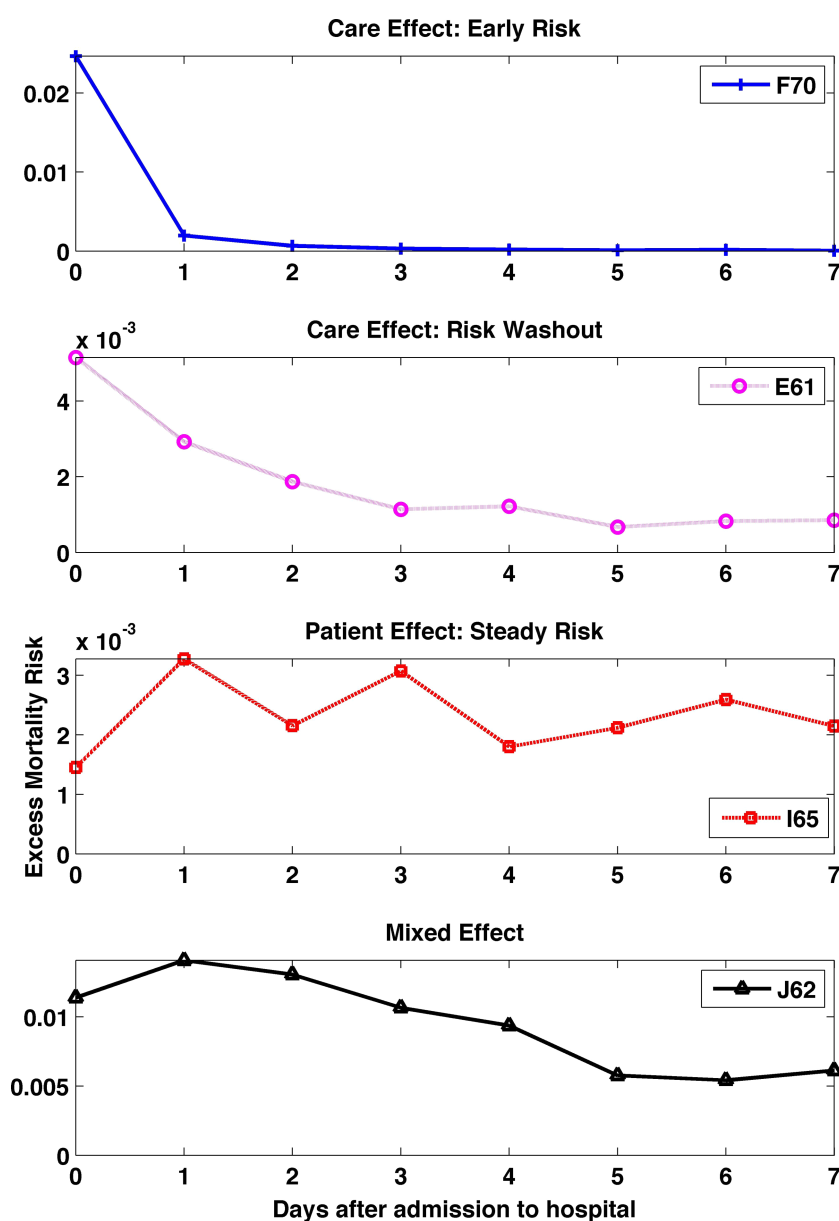


Figure 2 Excess mortality risks curves for selected diagnosis related groups (DRGs). Excess mortality risk curves for selected DRGs consistent with care effect (top two panels), patient effect (panel 3) and mixed effect (bottom panel).

3. Mixed effect (H3): In this group a spike in mortality was associated with weekend admission and reduced on exposure to weekday care, but remained elevated after washout. DRGs in this group were B02 (Craniotomy), B67 (Degenerative Nervous System Disorders), B70 (Stroke and Other Cerebrovascular Disorders), E71 (Respiratory Neoplasms), F62 (Heart Failure and Shock), G60 (Malignancy), H61 (Malignancy of Hepatobiliary System, Pancreas), J62 (Malignant Breast Disorders) and L60 (Renal Failure).

For some DRGs there were significantly higher numbers of post-discharge deaths following weekend admissions. For example, B02 (Craniotomy) had a post-discharge mortality rate of 5.0% for weekend admissions versus 2.7% for weekday admissions. However, after adjustment, no DRG had post-discharge only ORs with p values <0.01 (table 3).

DISCUSSION

In this study, different diagnostic groups showed varying temporal patterns of excess mortality following weekend admission. Variations in patient illness, severity and comorbidity between weekday and weekend admissions are widely acknowledged confounders in studies of the weekend effect, often criticised for ascribing to clinical care what might be due to biology. As in other studies,^{9 10 14} the impact of weekend admission clearly extends beyond the hospital walls and lingers over time. Indeed, our data show that the effect of weekend admission on mortality has not saturated at 1 week after admission (figure 2 and supplementary figure S1 in online appendix), so it is very likely that additional deaths occur well beyond that window.

Only 16 of 430 DRGs had a significant increased risk of death following weekend admission. Within each DRG, the probability of the weekend effect being a false positive (independently of any other DRG) is less than 1%. The probability that the weekend effect is a false positive in at least one of the 16 DRGs is $p=1-(1-p)^{16}=15\%$.

These 16 DRGs displayed all of the variations in the 7-day post-admission temporal pattern hypothesised from first principles. The early risk pattern, where most of the risk of death is within the first 24 h of admission, was associated with cardiac arrest and arrhythmia. Others have also demonstrated weekend admission effects for patients with myocardial infarction.¹⁵ Failure to provide immediate care to manage these conditions can have an immediate and fatal outcome, probably explaining the pattern. Although some disagree,² patients in this category are as likely to be admitted to hospital on any day of the week, so the weekend effect most probably is due to variation in care—for example, unavailability of specialist staff, imaging or stenting services. While our population includes some centres of excellence in cardiac care that

offer services across the weekend, it also includes smaller and rural hospitals where access is diminished on weekends.

In the risk washout pattern, the effect of weekend admission clearly dominates the first 48 h, but gradually ‘washes out’ of the system over time, and was associated with DRGs for pulmonary embolism, pulmonary oedema and peripheral vascular disorders. These are also acute events requiring access to high quality immediate care, but with a less abrupt risk of immediate mortality. One reading of this pattern is that those who survive the first 48 h fare better when re-exposed to weekday care.

Cancer patients dominated the steady risk pattern, with a similar mortality risk across the week after admission. In common with other weekend effect studies that rely on population level administrative data, we were unable to distinguish illness severity within a DRG and comorbidity group. It is therefore possible that cancer patients with more severe illness were indeed admitted on the weekend—for example, when community care could no longer manage them. If so, this may explain the pattern seen here, where the risk of death did not change when patients admitted at the weekend were re-exposed to weekday care.

Finally, a group of DRGs exhibited a mixed effect pattern expected when both quality of care and patient effect contribute to excess mortality. This pattern was associated with a mixture of diagnoses such as stroke, nervous system disorders and some cancers. This was also the pattern shown by the group of 16 DRGs taken as a whole.

If a patient was readmitted within one week of discharge, only the last episode of care was taken into account in our analysis. The rationale for this was that the last admission is the one where death might occur or is closest in time to death. To test for distortions introduced by this choice, we repeated our analysis but based it on DRGs associated with the first admission in a sequence. The results of this analysis were nearly identical to the original analysis, with only B67 (Degenerative Nervous System Disorders) no longer exhibiting a weekend effect ($p=0.02$). The four patterns of excess mortality risk curves remained the same, with no new patterns or new DRGs emerging with a weekend effect. Admission to the ICU during the hospital stay can be used to help identify patients who are critically ill. In this study, treating ICU admission as a confounder gave similar results for all patterns with B67 again dropping out of the weekend effect group ($p=0.03$).

While we defined a weekend as the period between midnight Friday and midnight Sunday, any time outside 08:00 h and 18:00 h Monday to Friday might be considered not part of ‘normal’ operating hours and also contribute to deviations in observed mortality. Furthermore, the observed increase in mortality was not homogeneous across these non-core operating times. In particular, adjusted mortality for our 16 selected DRGs

Table 3 DRGs at risk of weekend effect: number of weekday/weekend admissions and deaths, Odds Ratios (OR), Hazard Ratios (HR). OR are broke down into in-hospital and post-discharge ratios

DRG	Admissions		Deaths		Excess Deaths (95%CI)	In-hospital and Post-discharge				In-hospital only		Post-discharge only	
	Weekday	Weekend	Weekday	Weekend		p Value	OR (95%CI)	p Value	HR (95%CI)	p Value	OR (95%CI)	p Value	OR (95%CI)
B02, Craniotomy	3475	965	256	101	26 (18–36)	.001	1.51 (1.18–1.94)	.002	1.44 (1.14–1.81)	.003	1.47 (1.14–1.89)	.042	4.48 (1.06–18.91)
B67, Degenerative nervous system disorders	6192	1836	267	105	26 (18–36)	.005	1.40 (1.1–1.77)	.004	1.39 (1.11–1.74)	.004	1.44 (1.12–1.83)	.987	1.11 (0.47–2.63)
B70, Stroke and other cerebrovascular disorders	36762	13274	4627	1855	165 (137–195)	<.001	1.13 (1.07–1.2)	<.001	1.12 (1.06–1.18)	<.001	1.13 (1.07–1.2)	.166	1.15 (0.95–1.38)
E61, Pulmonary embolism	12123	2963	409	153	44 (33–57)	<.001	1.59 (1.31–1.93)	<.001	1.53 (1.27–1.84)	<.001	1.64 (1.34–1.99)	.991	1.13 (0.45–2.82)
E64, Pulmonary oedema and respiratory failure	4635	1734	941	413	61 (48–75)	.001	1.25 (1.09–1.43)	.001	1.21 (1.08–1.36)	.002	1.24 (1.08–1.42)	.405	1.28 (0.77–2.13)
E71, Respiratory neoplasms	9648	2895	1658	672	172 (151–195)	<.001	1.45 (1.31–1.61)	<.001	1.39 (1.27–1.52)	<.001	1.43 (1.29–1.59)	.013	1.50 (1.1–2.04)
F62, Heart failure and shock	45191	14598	2476	932	120 (96–146)	<.001	1.17 (1.08–1.27)	<.001	1.17 (1.08–1.26)	<.001	1.16 (1.07–1.26)	.066	1.32 (0.99–1.75)
F65, Peripheral vascular disorders	7457	2069	844	310	38 (18–74)	<.001	1.37 (1.18–1.59)	<.001	1.31 (1.15–1.5)	<.001	1.38 (1.18–1.62)	.196	1.31 (0.9–1.91)
F70, Major arrhythmia and cardiac arrest	7268	2842	3157	1326	98 (82–113)	.004	1.14 (1.04–1.25)	.009	1.10 (1.02–1.16)	.004	1.14 (1.04–1.25)	.727	1.07 (0.79–1.44)
G60, Digestive malignancy	5244	1571	904	365	92 (74–114)	<.001	1.45 (1.26–1.67)	<.001	1.40 (1.24–1.59)	<.001	1.48 (1.29–1.71)	.326	1.25 (0.83–1.89)
H61, Malignancy of hepatobiliary system, pancreas	4209	1253	822	338	90 (60–127)	<.001	1.54 (1.33–1.78)	<.001	1.44 (1.27–1.64)	<.001	1.49 (1.28–1.74)	.025	1.68 (1.09–2.6)
I65, Connective tissue malignancy, including pathological fracture	4415	1208	246	94	22 (2–151)	.005	1.43 (1.11–1.84)	.004	1.41 (1.11–1.8)	.003	1.48 (1.14–1.93)	.667	1.27 (0.61–2.68)
J62, Malignant breast disorders	1382	418	220	97	31 (23–41)	.001	1.60 (1.22–2.1)	<.001	1.56 (1.22–1.98)	<.001	1.73 (1.31–2.29)	.955	0.88 (0.36–2.16)
L60, Renal failure	8344	2313	936	320	44 (20–87)	.001	1.25 (1.09–1.44)	.002	1.23 (1.08–1.4)	.003	1.24 (1.07–1.43)	.063	1.59 (1–2.54)
R60, Acute leukaemia	2401	597	176	71	17 (12–25)	<.001	1.82 (1.34–2.49)	<.001	1.69 (1.28–2.22)	<.001	1.95 (1.41–2.68)	.92	1.17 (0.33–4.11)
R61, Lymphoma and non-acute leukaemia	8487	1915	431	173	75 (61–90)	<.001	1.88 (1.56–2.26)	<.001	1.83 (1.54–2.19)	<.001	1.98 (1.63–2.41)	.971	1.07 (0.55–2.08)

Excess deaths for each DRGs were calculated as the product of the cumulative excess mortality risk and the corresponding number of weekend admissions for that DRG.

was highest for admissions between midnight Friday and midnight Saturday and lowest for admissions between midnight Monday and midnight Tuesday.

Limitations of the study

The associations between weekend admissions and increased mortality reported here do not establish causality but do fit the hypothesised patterns expected with different causal pathways. There are well-known challenges in the clinical interpretation of administrative data, and this challenge is shared by most other studies of the weekend effect.²⁸ For example, in common with most previous literature, severity of illness within a diagnostic and comorbidity group, time and date of procedures and staffing information were not available in this study. Our results are also limited by the quality and methods of DRG coding which emphasise the principal diagnosis for admission and may miss critical comorbidities. For example, a cancer patient admitted for an infection may be coded using an 'infection' instead of a cancer DRG. Therefore, when analysing admissions for cancer patients, we only compared admissions where the primary reason for hospitalisation was cancer.

Future work

The existence, cause and magnitude of the weekend effect have been discussed in the literature for the last 30 years. Given that different patient groups now appear to have widely varying patterns of risk associated with weekend admission, finer-grained studies using clinical datasets are urgently needed, especially to better model severity and comorbidity and its influence on mortality. However, the very large sample size required for this study would not be currently possible with fine-grained clinical data. As large clinical datasets become available, however, finer analyses should be possible. We should be able, for example, to distinguish between rural and metropolitan hospitals and to test for the impact of reduced specialist services and ICU availability in some rural organisations. Also, differences in patients presenting to EDs and hospitals may partly reflect the services and support available to these patients in the community. Future work should include the effect of these services. Finally, unpacking the relationship between the levels of service provided on weekdays and weekends, controlling for any selection bias in weekend presentations, will help us better understand the risks associated with different staffing and service models.

CONCLUSION

The weekend effect is not a uniform phenomenon but, rather, a complex cluster of different causal pathways, shaping patients with very different diseases presenting at very different clinical services. Not every diagnostic group demonstrates a weekend effect, and those that do are associated with quite different risk

profiles, suggestive of different causal pathways. Recognising how these different patterns shape the impact of weekend admissions should lead to more diagnosis- and service-specific analyses and solutions.

Contributors OPC and BG: contributed to conception and design, analysis and interpretation of the data and results, drafting and writing the article, revising it critically for important intellectual content and final approval of the version to be published. KH and GPD: contributed to interpretation of the data and revising the paper critically for important intellectual and content. EC: contributed to supervision of the paper, developed hypotheses, analysis and interpretation of the data and results, as well as drafting and writing the article, revising it critically for important intellectual content and final approval of the version to be published.

Funding This work was funded by National Health and Medical Research Council (NHMRC) Program grant 568612.

Competing interests None.

Ethics approval Ethics approval was obtained from the NSW Population and Health Services Research Ethics Committee and the UNSW Human Research Ethics Committee.

Provenance and peer review Not commissioned; externally peer reviewed.

Open Access This is an Open Access article distributed in accordance with the Creative Commons Attribution Non Commercial (CC BY-NC 3.0) license, which permits others to distribute, remix, adapt, build upon this work non-commercially, and license their derivative works on different terms, provided the original work is properly cited and the use is non-commercial. See: <http://creativecommons.org/licenses/by-nc/3.0/>

REFERENCES

- 1 Aylin P, Yunus A, Bottle A, *et al.* Weekend mortality for emergency admissions. A large, multicentre study. *Qual Saf Health Care* 2010;19:213–17.
- 2 Becker DJ. Weekend hospitalization and mortality: a critical review. *Expert Rev Pharmacoeconomics Outcomes Res* 2008;8:23–6.
- 3 Bell CM, Redelmeier DA. Mortality among patients admitted to hospitals on weekends as compared with weekdays. *N Engl J Med* 2001;345:663–8.
- 4 Cram P, Hillis SL, Barnett M, *et al.* Effects of weekend admission and hospital teaching status on in-hospital mortality. *Am J Med* 2004;117:151–7.
- 5 Barnett M, Kaboli P, Sirio C, *et al.* Day of the week of intensive care admission and patient outcomes: a multisite regional evaluation. *Med Care* 2002;40:530–9.
- 6 Gould JB, Qin C, Marks AR, *et al.* Neonatal mortality in weekend vs weekday births. *JAMA* 2003;289:2958–62.
- 7 Schmulewitz L, Proudfoot A, Bell D. The impact of weekends on outcome for emergency patients. *Clin Med* 2005;5:621–5.
- 8 Wunsch H, Mapstone J, Brady T, *et al.* Hospital mortality associated with day and time of admission to intensive care units. *Intensive Care Med* 2004;30:895–901.
- 9 Fang J, Saposnik G, Silver FL, *et al.* Association between weekend hospital presentation and stroke fatality. *Neurology* 2010;75:1589–96.
- 10 McKinney JS, Deng Y, Kasner SE, *et al.* Comprehensive stroke centers overcome the weekend versus weekday gap in stroke treatment and mortality. *Stroke* 2011;42:2403–9.
- 11 Palmer WL, Bottle A, Davie C, *et al.* Dying for the weekend: a retrospective cohort study on the association between day of hospital presentation and the quality and safety of stroke care. *Arch Neurol* 2012;69:1296–302.

- 12 Ahmad OB, Boschi-Pinto C, Lopez AD, *et al*. *Age standardization of rates: a new WHO standard*. Geneva: World Health Organization, 2001.
- 13 James MT, Wald R, Bell CM, *et al*. Weekend hospital admission, acute kidney injury, and mortality. *J Am Soc Nephrol* 2010;21:845–51.
- 14 Aujesky D, Jimenez D, Mor MK, *et al*. Weekend versus weekday admission and mortality after acute pulmonary embolism. *Circulation* 2009;119:962–8.
- 15 Kostis WJ, Demissie K, Marcella SW, *et al*. Weekend versus weekday admission and mortality from myocardial infarction. *N Engl J Med* 2007;356:1099–109.
- 16 Halm EA, Chassin MR. Why do hospital death rates vary? *N Engl J Med* 2001;345:692–4.
- 17 Foss NB, Kehlet H. Short-term mortality in hip fracture patients admitted during weekends and holidays. *Br J Anaesth* 2006;96:450–4.
- 18 Hamilton P, Eschiti VS, Hernandez K, *et al*. Differences between weekend and weekday nurse work environments and patient outcomes: a focus group approach to model testing. *J Perinat Neonatal Nurs* 2007;21:331–41.
- 19 Skinner CA, Riordan RL, Fraser KL, *et al*. The challenge of locum working arrangements in New South Wales public hospitals. *Med J Aust* 2006;185:276–8.
- 20 Lawrence G, Dinh I, Taylor L. The Centre for Health Record Linkage: a new resource for health services research and evaluation. *Health Inform Manage J* 2008;37:60.
- 21 Duckett S. The development of Australian refined diagnosis related groups: the Australian inpatient casemix classification. *Casemix Q* 2000;2:115–20.
- 22 Charlson ME, Pompei P, Ales KL, *et al*. A new method of classifying prognostic comorbidity in longitudinal studies: development and validation. *J Chronic Dis* 1987;40:373–83.
- 23 Quan H, Sundararajan V, Halfon P, *et al*. Coding algorithms for defining comorbidities in ICD-9-CM and ICD-10 administrative data. *Med Care* 2005;43:1130–9.
- 24 Breslow NE, Day NE. Statistical methods in cancer research. Volume II—The design and analysis of cohort studies. *IARC Sci Publ* 1987(82):1–406.
- 25 Fay MP, Feuer EJ. Confidence intervals for directly standardized rates: a method based on the gamma distribution. *Stat Med* 1997;16:791–801.
- 26 Woolson RF, Bean JA. Mantel-Haenszel statistics and direct standardization. *Stat Med* 1982;1:37–9.
- 27 Cox DR. Regression models and life-tables. *J R Stat Soc Series B Stat Methodol* 1972;34:187–220.
- 28 Nathan H, Pawlik TM. Limitations of claims and registry data in surgical oncology research. *Ann Surg Oncol* 2008;15:415–23.

APPENDIX:

Table of Contents

List of Investigators	Page 2
Text	Page 3
Table S1	Pages 4-5
Figure S1	Page 6
Figure S2	Page 7

LIST OF INVESTIGATORS

This work was funded by National Health and Medical Research Council (NHMRC) Program Grant 568612 and approved by the NSW Population and Health Services Research Ethics Committee and the UNSW Human Research Ethics Committee. Its contents are the responsibility of the authors and their institutions and do not reflect the views of NHMRC.

Oscar Perez Concha, Blanca Gallego, Enrico Coiera,

Centre for Health Informatics, Australian Institute of Health Innovation
Level 1, AGSM Building, G27. UNSW, Kensington NSW 2052 Australia
phone 02 9385 8894, fax 02 9385 8692

Ken Hillman,

Professor of Intensive Care, Liverpool Hospital, University of New South Wales (SWS Clinical School)| Director of The Simpson Centre for Health Services Research | affiliated with the Australian Institute of Health Innovation | University of New South Wales

Tel: (02) 8738 3431 | Fax: (02) 8738 3551 |

Geoff P Delaney,

Conjoint Professor, University of New South Wales
Conjoint Professor, University of Western Sydney
Director of Cancer Services
Sydney South West Local Health District. C/- Department of Radiation Oncology
Cancer Therapy Centre. Liverpool Hospital
Locked Bag 7103. LIVERPOOL NSW 1871

We found 16 DRGs were patients were at risk of a weekend effect. Taken as a combined group, these 16 DRGs exhibited a *mixed effect pattern* consistent with both patient effect and weekend care contributing to excess mortality (Figure S1).

Table S1 lists these diagnostic groups, including information about the Major Diagnostic Category (MDC), and the different subcategories depending on the complication and comorbidity levels (CC), using the definitions manual of Australian Refined Diagnosis Related Groups, version 4.1.

Figure S2 shows the excess mortality risk curves related to the weekend effect for these 16 DRGs. These curves are classified into the four patterns proposed in the paper:

Care effect: Three patterns demonstrate a short rise in mortality associated with weekend admission:

- An *early risk* pattern showed the majority of excess deaths occurring within the first 24 hours after admission.
- A *risk washout* pattern showed the greatest impact of weekend admission in the first 48-hours, gradually reducing throughout the rest of the week.

Patient effect. In the *steady risk* pattern, the impact of weekend admission was distributed uniformly across the week post admission, and appeared to not alter with re-exposure to weekday care.

Mixed Effect. In this group a spike in mortality was associated with weekend admission and reduced on exposure to weekday care, but remained elevated after washout.

Table S1. List of Australian Refined Diagnosis Related Groups (AR-DRGs), version 4.1 for the 16 DRGs at risk of weekend effect.

List of Australian Refined Diagnosis Related Groups, version 4.1

MDC 01 Diseases & disorders of the nervous system

B02

B02A Craniotomy W Catastrophic CC	Surgical
B02B Craniotomy W Severe CC	Surgical
B02C Cranial Procedures W/O Catastrophic or Severe CC	Surgical

B67

B67A Degenerative Nervous System Disorders W Catastrophic or Severe CC	Medical
B67B Degenerative Nervous System Disorders W Moderate CC	Medical
B67C Degenerative Nervous System Disorders W/O CC	Medical

B70

B70A Stroke and Other Cerebrovascular Disorders W Catastrophic CC	Medical
B70B Stroke and Other Cerebrovascular Disorders W Severe CC	Medical
B70C Stroke and Other Cerebrovascular Disorders W/O Catastrophic or Severe CC	Medical
B70D Stroke and Other Cerebrovascular Disorders, Died or Transferred <5 Days	Medical

MDC 04 Diseases & disorders of the respiratory system

E61

E61A Pulmonary Embolism W Catastrophic CC	Medical
E61B Pulmonary Embolism W/O Catastrophic CC	Medical

E64

E64A Pulmonary Oedema and Respiratory Failure W Catastrophic CC	Medical
E64B Pulmonary Oedema and Respiratory Failure W/O Catastrophic CC	Medical

E71

E71A Respiratory Neoplasms W Catastrophic CC	Medical
E71B Respiratory Neoplasms W/O Catastrophic CC	Medical

MDC 05 Diseases & disorders of the circulatory system

F62

F62A Heart Failure and Shock W Catastrophic CC	Medical
F62B Heart Failure and Shock W/O Catastrophic CC	Medical

F65

F65A Peripheral Vascular Disorders W Catastrophic or Severe CC	Medical
F65B Peripheral Vascular Disorders W/O Catastrophic or Severe CC	Medical

F70

F70A Major Arrhythmia and Cardiac Arrest W Catastrophic or Severe CC	Medical
F70B Major Arrhythmia and Cardiac Arrest W/O Catastrophic or Severe CC	Medical

MDC 06 Diseases & disorders of the digestive system**G60**

G60A Digestive Malignancy W Catastrophic CC	Medical
---	---------

G60B Digestive Malignancy W/O Catastrophic CC	Medical
---	---------

MDC 07 Diseases & disorders of the hepatobiliary system & pancreas**H61**

H61A Malignancy of Hepatobiliary System, Pancreas W Catastrophic CC	Medical
---	---------

H61B Malignancy of Hepatobiliary System, Pancreas W/O Catastrophic CC	Medical
---	---------

MDC 08 Diseases & disorders of the musculoskeletal system & connective tissue**I65**

I65A Musculoskeletal Malignant Neoplasms W Catastrophic CC	Medical
--	---------

I65B Musculoskeletal Malignant Neoplasms W/O Catastrophic CC	Medical
--	---------

MDC 09 Diseases & disorders of the skin, subcutaneous tissue & breast**J62**

J62A Malignant Breast Disorders W CC	Medical
--------------------------------------	---------

J62B Malignant Breast Disorders W/O CC	Medical
--	---------

MDC 11 Diseases & disorders of the kidney & urinary tract**L60**

L60A Renal Failure W Catastrophic CC	Medical
--------------------------------------	---------

L60B Renal Failure W Severe CC	Medical
--------------------------------	---------

L60C Renal Failure W/O Catastrophic or Severe CC	Medical
--	---------

MDC 17 Neoplastic disorders (haematological & solid neoplasms)**R60**

R60A Acute Leukaemia W Catastrophic CC	Medical
--	---------

R60B Acute Leukaemia W/O Catastrophic CC	Medical
--	---------

R61

R61A Lymphoma and Non-Acute Leukaemia W Catastrophic CC	Medical
---	---------

R61B Lymphoma and Non-Acute Leukaemia W/O Catastrophic CC	Medical
---	---------

CC: Complication and comorbidity

Cat: Catastrophic

MDC: Major diagnostic category

Sev: Severe

W: with

W/O: without

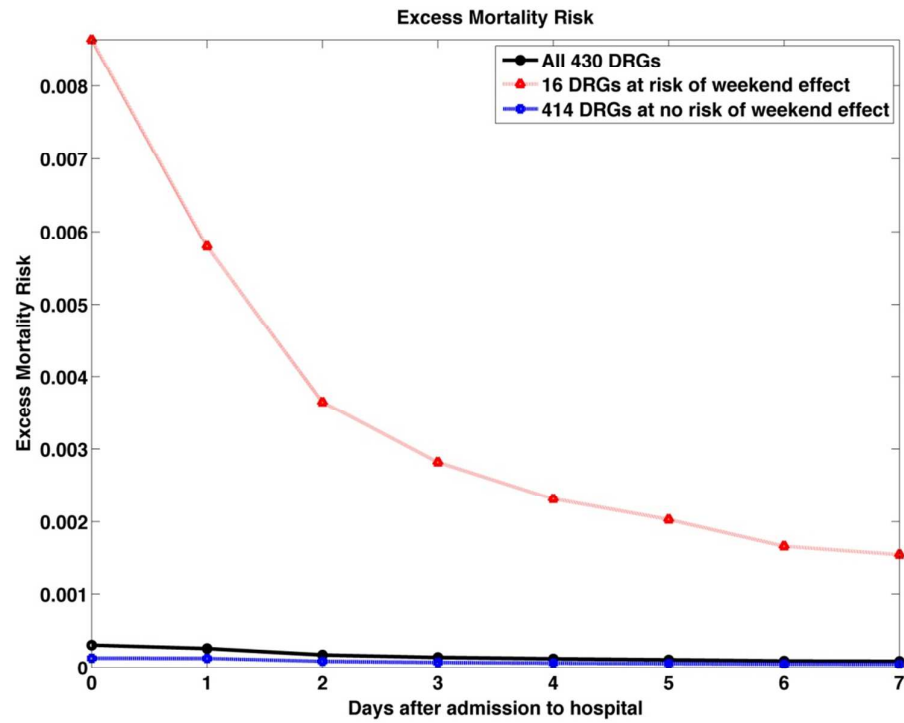


Figure S1: Excess mortality risk curves for all DRGs combined. Excess mortality risk curves for all 430 DRGs combined, the 16 DRGs demonstrating a weekend effect and the remaining DRGs with no weekend effect.

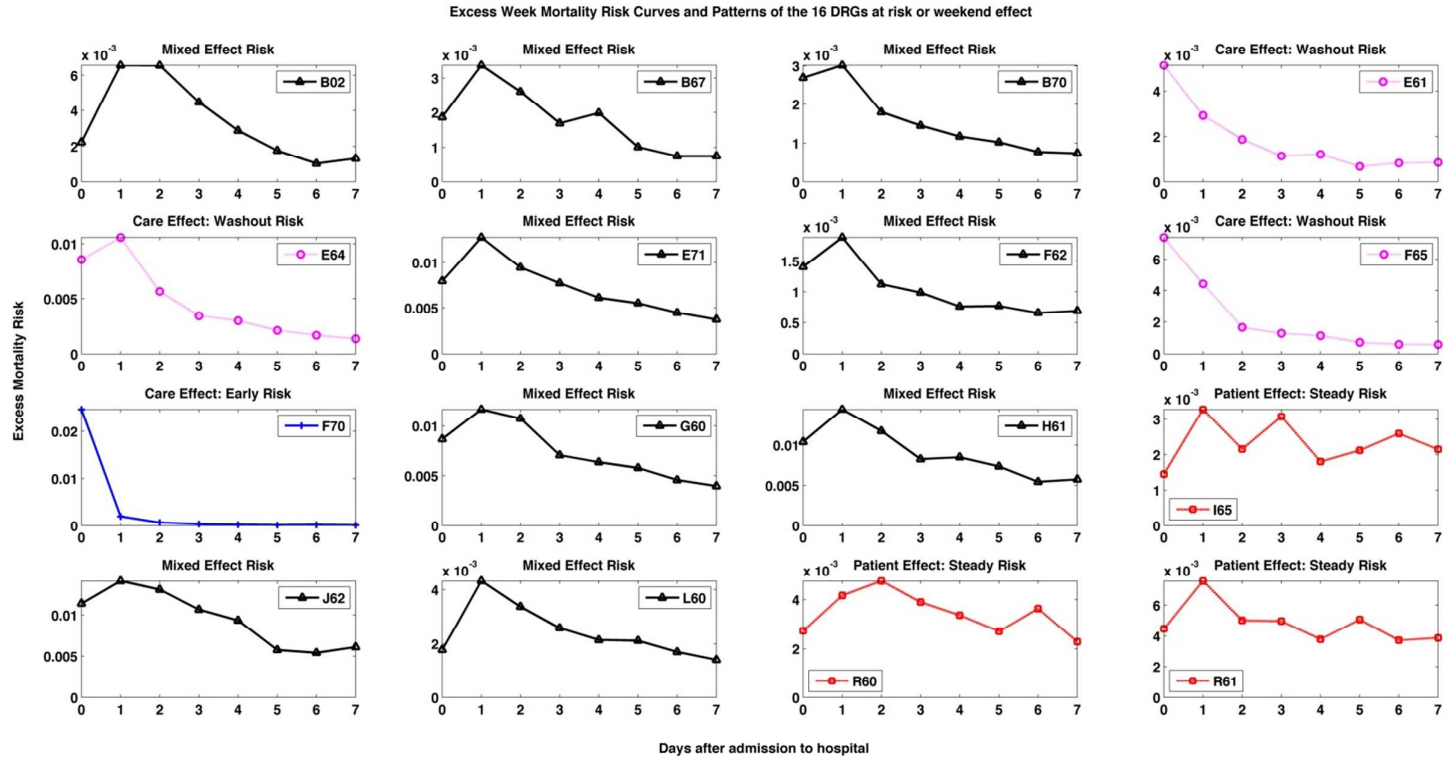


Figure S2: Excess mortality risk curves related to the weekend effect of the 16 DRGs at risk of weekend effect. Each excess mortality curve is classified into a temporary risk pattern: 1) Care Effect: Early Risk or Washout Risk, 2) Patient Effect: Steady Risk and 3) Mixed Effect Risk

Table 3. 16 DRGs at risk of weekend effect: number of weekday/weekend admissions and deaths, Odds Ratios (OR), Hazard Ratios (HR). OR are broke down into in-hospital and post-discharge ratios

DRG	Admissions		Deaths			In-hospital and Post-discharge				In-hospital only		Post-discharge only	
	Weekday	Weekend	Weekday	Weekend	Excess Deaths ¹ (95%CI)	p Value	OR (95%CI)	p Value	HR (95%CI)	p Value	OR (95%CI)	p Value	OR (95%CI)
B02, Craniotomy	3475	965	256	101	26(18-36)	.001	1.51(1.18-1.94)	.002	1.44(1.14-1.81)	.003	1.47(1.14-1.89)	.042	4.48(1.06-18.91)
B67, Degenerative Nervous System Disorders	6192	1836	267	105	26(18-36)	.005	1.40(1.1-1.77)	.004	1.39(1.11-1.74)	.004	1.44(1.12-1.83)	.987	1.11(0.47-2.63)
B70, Stroke and Other Cerebrovascular Disorders	36762	13274	4627	1855	165(137-195)	<.001	1.13(1.07-1.2)	<.001	1.12(1.06-1.18)	<.001	1.13(1.07-1.2)	.166	1.15(0.95-1.38)
E61, Pulmonary Embolism	12123	2963	409	153	44(33-57)	<.001	1.59(1.31-1.93)	<.001	1.53(1.27-1.84)	<.001	1.64(1.34-1.99)	.991	1.13(0.45-2.82)
E64, Pulmonary Oedema and Respiratory Failure	4635	1734	941	413	61(48-75)	.001	1.25(1.09-1.43)	.001	1.21(1.08-1.36)	.002	1.24(1.08-1.42)	.405	1.28(0.77-2.13)
E71, Respiratory Neoplasms	9648	2895	1658	672	172(151-195)	<.001	1.45(1.31-1.61)	<.001	1.39(1.27-1.52)	<.001	1.43(1.29-1.59)	.013	1.50(1.1-2.04)
F62, Heart Failure and Shock	45191	14598	2476	932	120(96-146)	<.001	1.17(1.08-1.27)	<.001	1.17(1.08-1.26)	<.001	1.16(1.07-1.26)	.066	1.32(0.99-1.75)
F65, Peripheral Vascular Disorders	7457	2069	844	310	38(18-74)	<.001	1.37(1.18-1.59)	<.001	1.31(1.15-1.5)	<.001	1.38(1.18-1.62)	.196	1.31(0.9-1.91)
F70, Major Arrhythmia and Cardiac Arrest	7268	2842	3157	1326	98(82-113)	.004	1.14(1.04-1.25)	.009	1.10(1.02-1.16)	.004	1.14(1.04-1.25)	.727	1.07(0.79-1.44)
G60, Digestive Malignancy	5244	1571	904	365	92(74-114)	<.001	1.45(1.26-1.67)	<.001	1.40(1.24-1.59)	<.001	1.48(1.29-1.71)	.326	1.25(0.83-1.89)

¹ Excess deaths for each DRGs were calculated as the product of the cumulative excess mortality risk and the corresponding number of weekend admissions for that DRG.

H61, Malignancy of Hepatobiliary System, Pancreas I65, Connective Tissue Malignancy, including Pathological Fracture J62, Malignant Breast Disorders L60, Renal Failure R60, Acute Leukaemia R61, Lymphoma and Non-Acute Leukaemia	4209	1253	822	338	90(60-127)	<.001	1.54(1.33-1.78)	<.001	1.44(1.27-1.64)	<.001	1.49(1.28-1.74)	.025	1.68(1.09-2.6)
	4415	1208	246	94	22(2-151)	.005	1.43(1.11-1.84)	.004	1.41(1.11-1.8)	.003	1.48(1.14-1.93)	.667	1.27(0.61-2.68)
	1382	418	220	97	31(23-41)	.001	1.60(1.22-2.1)	<.001	1.56(1.22-1.98)	<.001	1.73(1.31-2.29)	.955	0.88(0.36-2.16)
	8344	2313	936	320	44(20-87)	.001	1.25(1.09-1.44)	.002	1.23(1.08-1.4)	.003	1.24(1.07-1.43)	.063	1.59(1-2.54)
	2401	597	176	71	17(12-25)	<.001	1.82(1.34-2.49)	<.001	1.69(1.28-2.22)	<.001	1.95(1.41-2.68)	.92	1.17(0.33-4.11)
	8487	1915	431	173	75(61-90)	<.001	1.88(1.56-2.26)	<.001	1.83(1.54-2.19)	<.001	1.98(1.63-2.41)	.971	1.07(0.55-2.08)
	2 418						1.17(1.15-1.19)		1.16(1.14-1.18)		1.17(1.14-1.19)		
All 430 DRGs	198	898 975	46 507	18 282		<.001	1.19)	<.001	1.18)	<.001	1.19)	<.001	1.18(1.12-1.25)