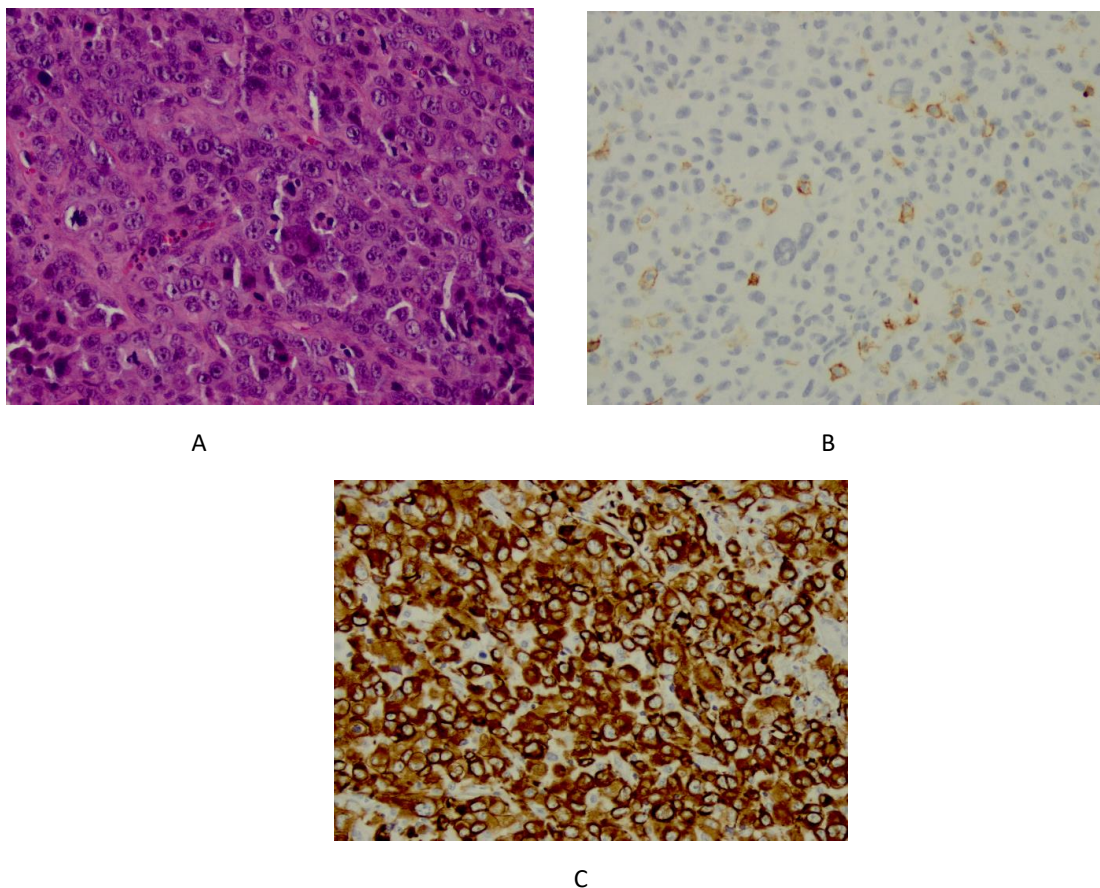


# Supplementary:

- Figure 1. IHC of lung pleural biopsy Pre-ICI
- Figure 2. IHC of cervical lymph node Post-ICI
- Figure 3. Scatter plot of rearrangements between different samples.
- Table 1. Next generation sequencing result of lung pleural biopsy specimen.
- Table 2. Calculation of reporting odds ratio (ROR).

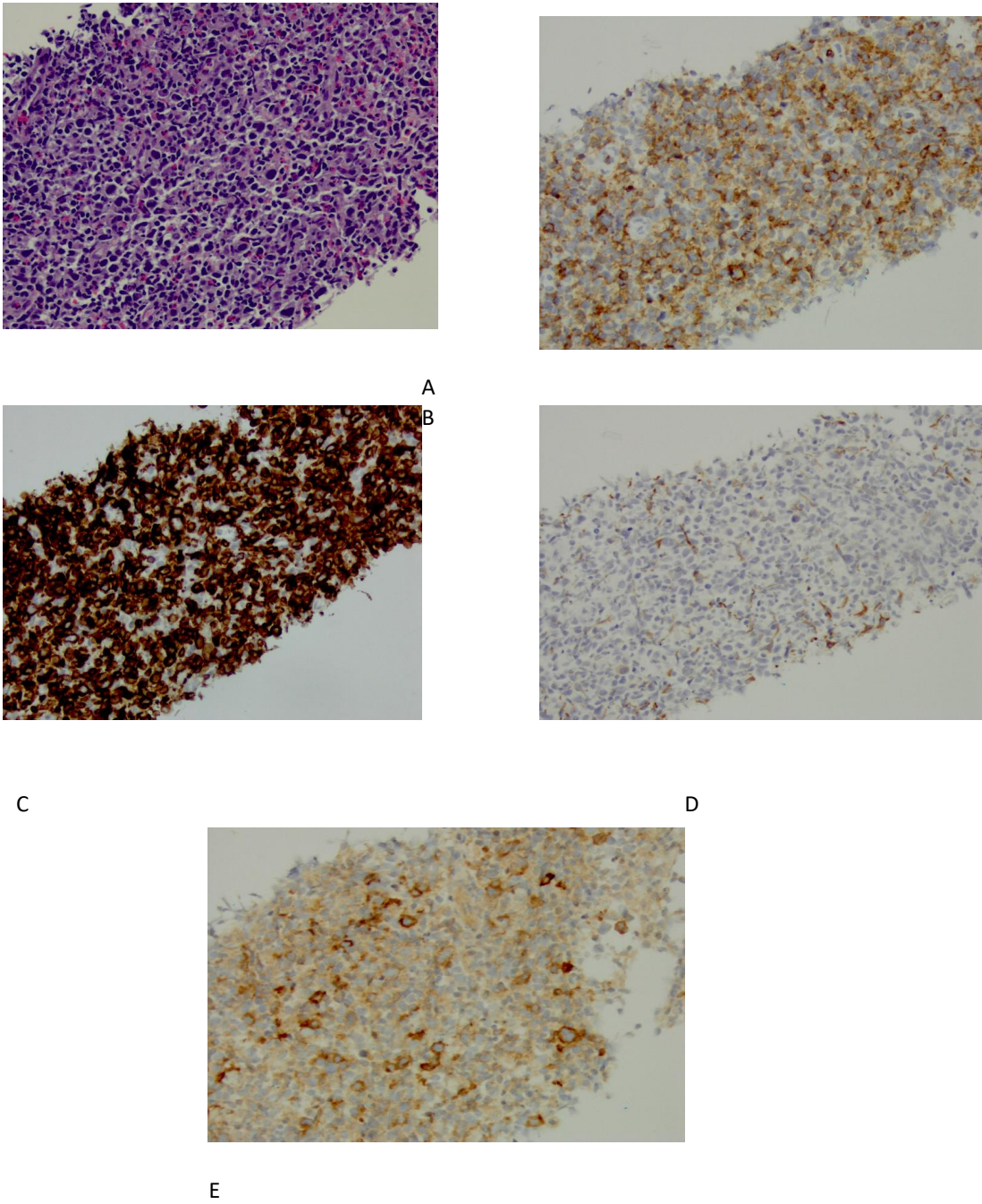
**Figure 1. IHC of lung pleural biopsy.**



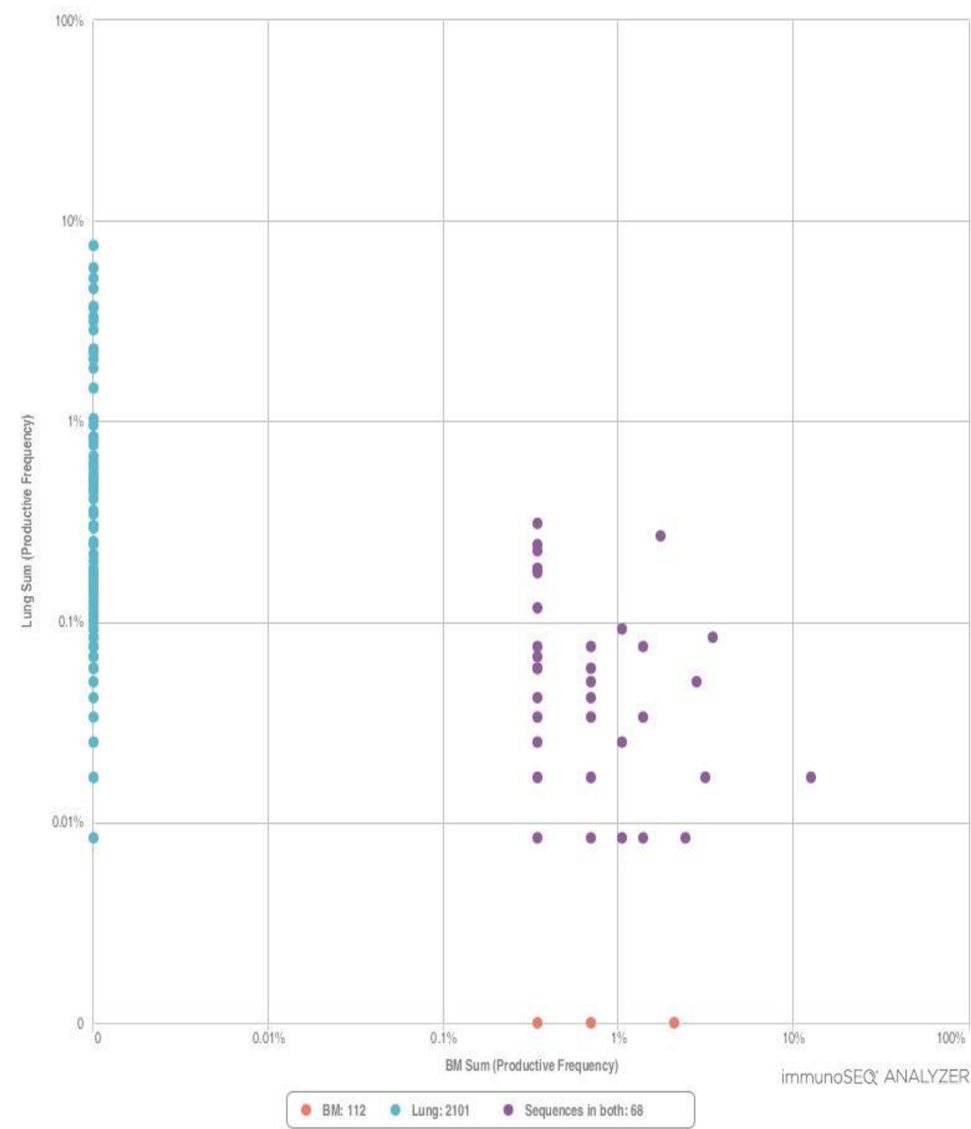
**Figure 1 A. H&E staining of left pleural biopsy specimen. B. CD45 staining negative by IHC.**

**C. CK positive by IHC.**

Figure 2. IHC of cervical lymph node Post-ICI



**Figure 2 A. H&E Stain of lymph node B. CD45 positive by IHC. C. CD3 positive by IHC D. CK negative by IHC. E. CD30 positive by IHC.**



**Figure 3A. Scatter plot of rearrangements by TCRβ sequencing between lung and bone marrow sample.**

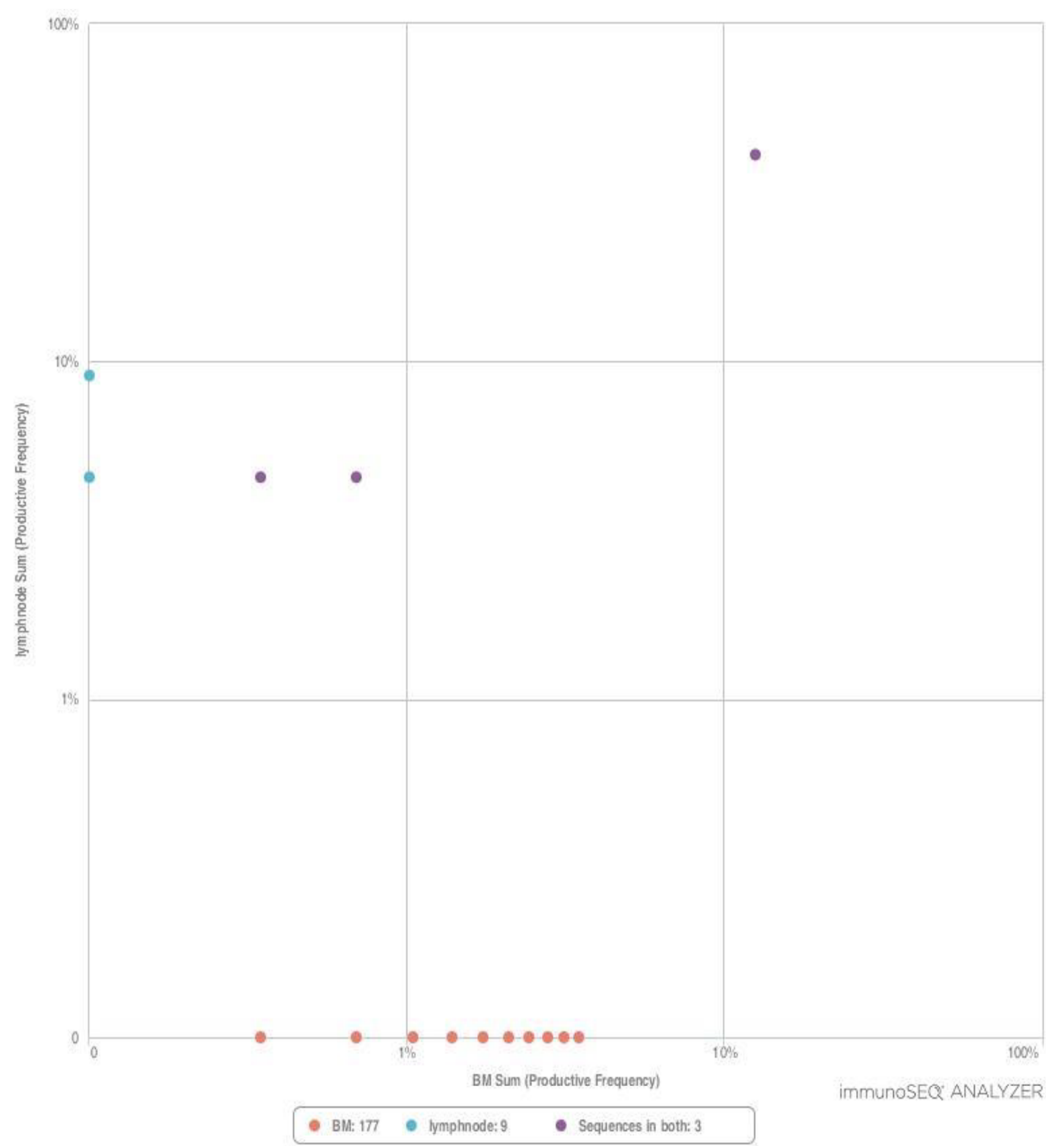


Figure 3B. Scatter plot of rearrangements by TCRβ sequencing between lymph node and bone marrow sample.

**Table 1. Mutations found on NGS on pleural biopsy prior to PD1 inhibitor**

Mutation	Alteration
TP53	P71fs
CIC	R934W
ITK	V587I
LRP1B	V4109I G2474S T1043S
MECOM	Q351E
MYH9	E1960K
NKX2-1	A188fs
NUMA1	Y1836H
NUTM1	I739T
RECQL4	V652M
RPTOR	A826T
SMO	P641A
TRIM26	V136I
TRIM33	Q609X

**Table 2. ROR calculation for risk of T-cell lymphoma due to CPI**

Total AEs in FAERS from 2012-2018	10603289
Total AEs in FAERS for CPIs from 2012-2018 (Pembrolizumab, Nivolumab and Ipilimumab)	50445
Total AEs for T-cell lymphoma in FAERS from 2012-2018	1334
Total AEs for T-cell lymphoma sec to CPIs from 2012-2018	12
ROR for T-cell lymphoma sec to CPI vs other drugs in database	1.91 (95% CI 1.08-3.37)