

Occupational and Environmental Medicine

Adopted as the Journal of the Faculty of Occupational Medicine of the Royal College of Physicians of London

Editor

Anne Cockcroft

Deputy editor

T C Aw

Book review editor

R L Maynard

Commissioning editor

I Kennedy

Technical editors

Margaret James

John Weller

Editorial assistant

Kathryn Walsh

Editorial board

F J H van Dijk (Holland)

M Eglite (Latvia)

J Harrison (United Kingdom)

D Koh (Singapore)

G Liss (Canada)

R McNamee (United Kingdom)

J Myers (South Africa)

B Nemery (Belgium)

M J Nieuwenhuijsen (United Kingdom)

T Okubo (Japan)

H Roels (Belgium)

M Sim (Australia)

D C Snashall (United Kingdom)

J-D Wang (Taiwan)

P Westerholm (Sweden)

Otto Wong (USA)

Editor, *British Medical Journal*

Instructions to authors

Full instructions are available online at www.occenvmed.com. Authors are required to grant *Occupational and Environmental Medicine* an exclusive licence to publish; further details available online at www.occenvmed.com/misc/ifa.html

If you do not have web access please contact the editorial office:

Occupational and Environmental Medicine

BMA House

Tavistock Square

London WC1H 9JR, UK

Telephone: +44 (0) 20 7383 6561

Fax: +44 (0) 20 7383 6668

Email: ocmeditorial@bmjgroup.com

Subscription information

Occupational and Environmental Medicine is published monthly
ISSN 1351-0711 (print); 1470-7926 (online)

Institutional rates

Print – 2002 rates: £218; US\$350

Online – Site licences are priced on FTE basis and allow access by the whole institution. Print is available at deeply discounted rates for online subscribers; details available online at www.bmjournals.com/subscriptions or contact the Subscription Manager in London (see below)

Personal rates

Print (includes online access) – £129; US\$206

Online only – £65; US\$99

How to subscribe

See inside back cover



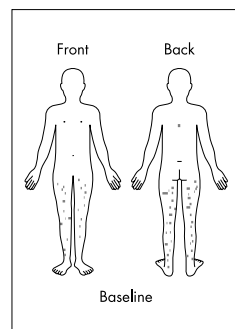
www.publicationethics.org.uk

This journal is a member of and subscribes to the principles of the Committee on Publication Ethics

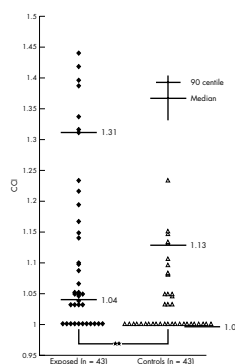
Copyright

© 2002 *Occupational and Environmental Medicine*. All rights reserved; no part of this publication may be reproduced, stored in a retrieval system, or transmitted in any form or by any means, electronic, mechanical, photocopying, recording, or otherwise without the prior permission of *Occupational and Environmental Medicine*.

- *Occupational and Environmental Medicine* is published by BMJ Publishing Group and printed in UK on acid free paper by Thanet Press Limited, Margate, Kent, UK
- Periodicals postage paid, Rahway, NJ. Postmaster: send address changes to: *Occupational and Environmental Medicine*, c/o Mercury Airfreight International Ltd, 365 Blair Road, Avenel, NJ 07001, USA



See p 807



See p 824

**NEW
ONLINE
SUBMISSION
GO TO
WEBSITE
TO SUBMIT YOUR
MANUSCRIPT**

contents OEM

Volume 59 Number 12 December 2002

Editorial

- 791 Quantification of health effects of exposure to air pollution M Krzyzanowski, A Cohen, R Anderson, and the WHO Working Group

Review

- 794 Mortality among US and UK veterans of the Persian Gulf War: a review H K Kang, T A Bullman, G J Macfarlane, G C Gray

Original articles

- 800 Definition and assessment of specific occupational demands concerning lifting, pushing, and pulling based on a systematic literature search J Bos, P P F M Kuijer, M H W Frings-Dresen
- 807 Cost-benefit and cost-effectiveness analysis of a disability prevention model for back pain management: a six year follow up study P Loisel, J Lemaire, S Poitras, M J Durand, F Champagne, S Stock, B Diallo, C Tremblay
- 816 Cross sectional study on lung function of coke oven workers: a lung function surveillance system from 1978 to 1990 J Wu, I A Kreis, D Griffiths, C Darling
- 824 Relation between colour vision loss and occupational styrene exposure level Y Gong, R Kishi, Y Katakura, E Tsukishima, K Fujiwara, S Kasai, T Satoh, F Sata, T Kawai
- 830 Respiratory symptoms and diseases among workers in the soft tissue producing industry T Kraus, A Pfahlberg, O Gefeller, H J Rathel
- 836 Self perceived work related stress and the relation with salivary IgA and lysozyme among emergency department nurses Y Yang, D Koh, V Ng, C Y Lee, G Chan, F Dong, S H Goh, V Anantharaman, S E Chia
- 842 Passive smoking and its impact on employers and employees in Hong Kong S M McGhee, A J Hedley, L M Ho
- 847 Influence of years engaged in agriculture and number of pregnancies and deliveries on mortality of inhabitants of the Jinzu River basin area, Japan E Kobayashi, Y Okubo, Y Suwazono, T Kido, M Nishijo, H Nakagawa, K Nogawa

Short report

- 851 Long term medical conditions: career prospects B J Bateman, F Finlay

PostScript

853 Sex ratio at birth in Masjid-i-Sulaiman (Khozestan province, Iran) *M Saadat, M Ansari-Lari, A Bahaoddini*

853 Book reviews

854 Notices

854 Correction

Miscellanea

823 Echo: Bar and restaurant staff are regularly overexposed

852 Echo: Pacing predicts leaving work in ankylosing spondylitis

Education

855 Episodes of environmental poisoning worldwide *N J Langford, R E Ferner*

Electronic pages

e1 Author index

e2 Subject index



See p 855

Is your paper being cited?

CiteTrack service

CiteTrack will alert you by email whenever new content in *Occupational and Environmental Medicine* or a participating journal is published that matches criteria you want to track

Topics: Tell CiteTrack which words or subjects to watch for in new content

Authors: Be alerted whenever key authors you are following publish a new paper

Articles: Know whenever a paper of interest to you is referenced by another paper

www.occenvmed.com

www.occenvmed.com