



BMJ Open is committed to open peer review. As part of this commitment we make the peer review history of every article we publish publicly available.

When an article is published we post the peer reviewers' comments and the authors' responses online. We also post the versions of the paper that were used during peer review. These are the versions that the peer review comments apply to.

The versions of the paper that follow are the versions that were submitted during the peer review process. They are not the versions of record or the final published versions. They should not be cited or distributed as the published version of this manuscript.

BMJ Open is an open access journal and the full, final, typeset and author-corrected version of record of the manuscript is available on our site with no access controls, subscription charges or pay-per-view fees (<http://bmjopen.bmj.com>).

If you have any questions on BMJ Open's open peer review process please email info.bmjopen@bmj.com

BMJ Open

Prospective comparison of acupuncture with sham acupuncture to determine impact on sedation and analgesia in mechanically ventilated critically ill patients (PASSION study): protocol for a randomized controlled trial

Journal:	<i>BMJ Open</i>
Manuscript ID	bmjopen-2021-059741
Article Type:	Protocol
Date Submitted by the Author:	03-Dec-2021
Complete List of Authors:	Zhang, Yuzhuo; Guangzhou University of Chinese Medicine Yang, Guang; Guangzhou University of Chinese Medicine Wei, Jinyi; Guangzhou University of Chinese Medicine Chen, Fangliang; Guangzhou University of Chinese Medicine Zhang, Min-Zhou; Guangzhou University of Chinese Medicine; Guangdong Provincial Hospital of Chinese Medicine, Department of Critical Care Medicine Mao, Shuai; Guangzhou University of Chinese Medicine; Guangdong Provincial Hospital of Chinese Medicine, Department of Critical Care Medicine
Keywords:	Adult intensive & critical care < ANAESTHETICS, Adult anaesthesia < ANAESTHETICS, Pain management < ANAESTHETICS

SCHOLARONE™
Manuscripts

1
2
3
4
5
6
7
8
9
10
11
12
13
14
15
16
17
18
19
20
21
22
23
24
25
26
27
28
29
30
31
32
33
34
35
36
37
38
39
40
41
42
43
44
45
46
47
48
49
50
51
52
53
54
55
56
57
58
59
60

Prospective comparison of acupuncture with sham acupuncture to determine impact on sedation and analgesia in mechanically ventilated critically ill patients (PASSION study): protocol for a randomized controlled trial

Yuzhuo Zhang, Ph.D. ^{1*}

Guang Yang, M.D. ^{1,2*}

Jinyi Wei, M.D. ¹

Fangliang Chen, M.D. ¹

Minzhou Zhang, M.D. ^{1,2,4Δ}

Shuai Mao, M.D. ^{1,2,4Δ}

¹ *Second Clinical College, Guangzhou University of Chinese Medicine, Guangzhou 510405, China*

² *Department of Critical Care Medicine, Guangdong Provincial Hospital of Chinese Medicine, Guangzhou 510120, China*

³ *Guangdong Provincial Branch of National Clinical Research Centre for Chinese Medicine Cardiology, Guangzhou 510120, China*

*The first two authors contribute equally to this article.

ΔCorrespondence to:

1
2
3
4 Prof. Shuai MAO
5

6 Department of Critical Care Medicine,
7

8
9 Guangdong Provincial Hospital of Chinese Medicine,
10

11 Guangzhou 510120, China
12

13
14 Phone: 86-20-81887233
15

16
17 Fax: 86-20-81867705
18

19 E-mail: maoshuai@gzucm.edu.cn
20

21
22 Or Prof. Minzhou Zhang minzhouzhang@gzucm.edu.cn
23
24
25
26
27
28
29
30
31
32
33
34
35
36
37
38
39
40
41
42
43
44
45
46
47
48
49
50
51
52
53
54
55
56
57
58
59
60

1
2
3
4
5
6
7
8
9
10
11
12
13
14
15
16
17
18
19
20
21
22
23
24
25
26
27
28
29
30
31
32
33
34
35
36
37
38
39
40
41
42
43
44
45
46
47
48
49
50
51
52
53
54
55
56
57
58
59
60

ABSTRACT

Introduction Sedation and analgesia are recommended used in the intensive care unit (ICU) to enhance patient comfort and safety, facilitate mechanical ventilation, and reduce oxygen demands. However, the increasing evidence demonstrates that excessive sedation and analgesia might prolong mechanical ventilation and increase costs and mortality. Acupuncture, known to attenuate pain, anxiety, and agitation symptoms, might reduce the duration of mechanical ventilation and drug accumulation through avoiding excessively deep sedation and analgesia.

Methods and analysis Prospective, randomized controlled trial (RCT) of 180 adult medical/surgical ICU patients with mechanical ventilation needing sedation at 3 ICUs between December 2021 and December 2022. Patients would be treated with analgesia and sedation to achieve desired target sedation levels (Richmond Agitation Sedation Score of -2 to 1) from enrolment until extubation. Enrolled patients will be randomly assigned in a ratio of 1:1:1 to receive deep needle insertion with combined manual and alternating-mode electrical stimulation on acupoints (AC group), superficial needle insertion without manual stimulation and electrical stimulation on non-acupoints (SAC group), or no acupuncture intervention (NAC group).

The primary outcome is the duration of mechanical ventilation from randomization until patients were free of mechanical ventilation (including noninvasive) without reinstitution for the following 48 hours. Secondary endpoints included the dose of

administered sedatives and analgesic at comparable sedation levels throughout the study period, ICU length of stay, hospital length of stay.

Ethics and dissemination The trial was approved by the ethics committee at Guangdong Provincial Hospital of Chinese Medicine. We will publish the study results.

Trial Registration numbers: ChiCTR2100052650

Keywords:

acupuncture; sedation; analgesia; critically ill patients; nonpharmacological therapy

Word Count: 3805

1
2
3
4
5
6
7
8
9
10
11
12
13
14
15
16
17
18
19
20
21
22
23
24
25
26
27
28
29
30
31
32
33
34
35
36
37
38
39
40
41
42
43
44
45
46
47
48
49
50
51
52
53
54
55
56
57
58
59
60

Strengths and limitations of this study

- ◆ Strengths include objective, methods to reduce bias and careful collection of safety data.
- ◆ The result would demonstrate nonpharmacological therapies could be used as adjuncts to sedatives and analgesics for critically ill patients.
- ◆ Limitations are the non-blinded interventions due to the nature of acupuncture.

For peer review only

Protected by copyright, including for uses related to text and data mining, AI training, and similar technologies.
Erasmus Hogeschool

For peer review only

1
2
3
4
5
6
7
8
9
10
11
12
13
14
15
16
17
18
19
20
21
22
23
24
25
26
27
28
29
30
31
32
33
34
35
36
37
38
39
40
41
42
43
44
45
46
47
48
49
50
51
52
53
54
55
56
57
58
59
60

INTRODUCTION

Sedative and analgesic medications are routinely administered to mechanically ventilated critically ill patients to reduce pain, anxiety, and agitation, as well as to allow patients to tolerate invasive procedures in the intensive care unit (ICU).¹ Opiates are most commonly used as analgesics, while benzodiazepines, propofol, or dexmedetomidine are typically used to prevent or reduce anxiety and agitation.² However, overuse of these medications is associated with worsened clinical outcomes, such as prolonged time of mechanical ventilation and hospital length of stay, the increased risk of altered mental status, and even mortality.³ Thus, reducing the unnecessary dosage of sedative and analgesic medications and their side effects while providing desired sedation has always been a key objective when caring for critically ill patients.

As a therapeutic modality with fewer adverse effects, acupuncture has been used in China and other Asian countries for thousands of years to treat various conditions.⁴⁻⁶ Studies of acupuncture usually focused on its analgesic effect, such as relieving pain and partly reducing opioid-related side effects during or after surgical procedures.⁷⁻¹¹ Particularly, Centers for Medicare & Medicaid Services (CMS) of USA finalizes a decision to cover acupuncture for chronic low back pain for Medicare beneficiaries from January 2020. Moreover, acupuncture has been demonstrated to reduce sedative demands and improve patient experience during diagnostic endoscopic ultrasound.¹² However, there are few, if any, reports on the effect of acupuncture on reducing excessive sedation and analgesia, especially due to shortening duration of mechanical

ventilation and drug accumulation. Furthermore, there is no evidence for an effect of “true” acupuncture over “sham” acupuncture (superficial needle insertion without manual stimulation at “non-points” or electrical stimulation) on clinical outcomes in critically ill patients needing mechanical ventilation.

Therefore, the PASSION study is designed to investigate the efficacy of acupuncture on sedation and analgesia in mechanically ventilated critically ill patients. We are going to test the hypothesis that acupuncture, as adjunctive therapy to sedation and analgesia therapies, could reduce the duration of mechanical ventilation, the dose of administered sedatives and analgesic, and subsequently improve other clinical outcomes for critically ill patients when compared with sham acupuncture or non-acupuncture.

METHODS

Study Design Overview

This is a prospective, parallel-group, controlled trial that will recruit 180 patients with a computer-generated allocation sequence and centralized randomization at tertiary and regional ICUs in 3 hospital (Guangdong Provincial Hospital of Chinese Medicine, Charity Hospital of Guangzhou, University Hospital) in South China. Eligible patients will be randomly assigned, in a ratio of 1:1:1, to receive deep needle insertion with combined manual and alternating-mode electrical stimulation on acupoints (AC group, n =60), superficial needle insertion without manual or electrical stimulation on non-acupoints (SAC group, n =60) for 30 min/day, or no acupuncture intervention (NAC group, n =60) .

1
2
3
4
5
6
7
8
9
10
11
12
13
14
15
16
17
18
19
20
21
22
23
24
25
26
27
28
29
30
31
32
33
34
35
36
37
38
39
40
41
42
43
44
45
46
47
48
49
50
51
52
53
54
55
56
57
58
59
60

Participants will be assessed the duration of mechanical ventilation, as well as the dose of administered sedatives and analgesic at comparable sedation levels, from randomization until patients were free of mechanical ventilation (including noninvasive) without reinstitution for the following 48 hours. They will be also assessed if acupuncture could achieve better clinical outcomes than SAC or NAC treatment. The design of the trial is summarized in Figure 1.

Ethical Requirements and Registration

This protocol and statistical analysis plan was approved by the institutional human Clinical Research Ethical Committee at Guangdong Provincial Hospital of Chinese Medicine (Guangzhou, China) in October 2021 with permission number ZF2021-144-01. The PASSION study was registered on Nov 3, 2021 (ClinicalTrials.gov, number ChiCTR2100052650) and will be conducted following the Declaration of Helsinki from December 2021 to December 2022.

Written informed consent will be provided before enrollment voluntarily. Considering that patients will be sedated following ICU admission, complete adherence to patient consent is deemed impossible. The investigational nature and details of the study, together with the possible risks and all the benefits, will be informed to patients or their authorized surrogates. Written informed consent will be subsequently obtained from either of them. Patients for whom surrogate consent was obtained were asked again to provide informed consent once determined to be competent. They can also withdraw from the study at any time they wish. Also, the investigator can decide to withdraw a

subject from the study for urgent medical reasons. The researcher should complete the case report form (CRF) and record the reason for dropping out.

Patients

Patients from medical and surgical ICU, aging from 18 to 80 years, for expected mechanical ventilation longer than 24 hours, with agitation and/or discomfort after recovering from drugs used to facilitate endotracheal intubation, requiring sedation and agitation by continuous intravenous administration deemed by the ICU physician, are eligible for participation as soon as they or their authorized surrogates are willing to give informed consent (Table 1).

Exclusion criteria include skin lesions near the acupuncture points; coagulopathy (bleeding time >4 min, thrombocytes <50,000/ μ l), neurological disease (previous stroke, cerebral palsy, etc.) that would confound the diagnosis of delirium, active seizures, severe dementia, relevant psychiatric disorder, hypohepatia with Childs-Pugh class B or C, second- or third-degree atrioventricular block, alcohol or drug abuse, benzodiazepine dependency, a moribund state with the planned withdrawal of life support, family or physician refusal, pregnancy or lactation, currently participated in any other investigational therapeutic or device trial (Table 1).

ICU standard treatment

As is standard in each ICU of our study, mechanically ventilated critically ill patients will be treated in a single treatment room. They will be taken care of by a trained ICU physician responsible for all treatment decisions, including sedation analgesia

1
2
3
4
5
6
7
8
9
10
11
12
13
14
15
16
17
18
19
20
21
22
23
24
25
26
27
28
29
30
31
32
33
34
35
36
37
38
39
40
41
42
43
44
45
46
47
48
49
50
51
52
53
54
55
56
57
58
59
60

management plans made in consultation with the bedside nurses. They will also receive one-to-one nursing care to adjust the treatment based on a patient's response in time. A team of medical officers will review patient care every day.

Randomization and blinding

Eligible patients will be stratified by participating sites to avoid patient-level contamination from the systems-level organizational change in sedation practice and, within each ICU, assigned to the AC, SAC, or NAC group in an equal ratio via computer-generated randomization. In detail, an independent study coordinator will log into the central randomization system using a password-protected account and enter inclusion and exclusion criteria to ensure eligibility. After entering a patient's name and identification card number, a randomization sequence will be generated in blocks of varying sizes and stratified by the site under the control of the central computer system. The random sequence will then be concealed in sealed envelopes and sent to an acupuncturist from the assigned patient's site by the study coordinator.

Allocation of participants will be known to the study coordinator and acupuncturists who will not be involved in outcome assessment and be required to sign a confidentiality agreement about patient allocation. All patients will be treated in a single treatment room. In both AC and SAC groups, patients, bedside nurses, and physicians will be blinded to which acupuncture method the patients would receive. The data collectors and the biostatisticians will be masked from the treatment assignment.

Acupuncture interventions and procedures

The acupuncture interventions will be developed by a consensus of acupuncture experts according to the Standards for Reporting of Controlled Trials in Acupuncture (STRICTA).¹³ Patients will be assigned in a ratio of 1:1:1 to AC group (n=60), SAC group (n=60), NAC group (n=60). Besides, each group shares the same basic Sedation Analgesia Strategy

For patients in the AC group, 8 disposable sterile acupuncture needles (filiform needles made of stainless steel, Beijing Hanyi Medical Instruments, China) with a length of 40 mm and a diameter of 0.30 mm will be inserted into acupuncture points at Baihui (DU20), Yintang (EX-HN3), and bilateral acupoints of Shenmen (HT7), Hegu (LI4), Taichong (LR3) according to the theory of traditional Chinese medicine. The localization of these points is measured with a unit of *cun*, a traditional Chinese unit of length. One *cun* of a person is defined as the width of the thumb himself, whereas four fingers are defined as 3 *cun*. The insertion will be followed by manual stimulation, a lifting and thrusting technique combined with twirling and rotating the needle sheath to produce a sensation of soreness, numbness, distention, or radiating. This sensation is known as “*Deqi*” and is considered to be indicative of effective needling. Then, alternating-mode electrical stimulation will be given with the parameters: bursts alternating at 2 Hz and 100 Hz every 3 s, with 10-15 mA intensity inducing no discomfort and no muscle contraction.

For patients in the SAC group, superficial needle insertion with a depth of 2 mm and no manual stimulation will be performed for 30 min/day. The same sort of needles with the AC group will be placed 1 cm distant lateral the used acupoints that are not known as

1
2
3
4
5
6
7
8
9
10
11
12
13
14
15
16
17
18
19
20
21
22
23
24
25
26
27
28
29
30
31
32
33
34
35
36
37
38
39
40
41
42
43
44
45
46
47
48
49
50
51
52
53
54
55
56
57
58
59
60

AC points. The electrical stimulator will likewise be connected but without electrical stimulation.

Patients in the NAC group will receive no acupuncture-related intervention during the trial. But they could receive a free 12-session daily acupuncture treatment after completing the study at their convenience.

Each Site will be required to have 2 licensed acupuncturists with more than 3 years of experience and specialized training in the acupuncture protocols before starting the study. The acupuncturists will be responsible for the whole acupuncture process but are not further involved in this study.

Basic Sedation Analgesia Strategy

In this study, diagnosis and therapeutic management of agitation and pain will be prescribed by the physicians responsible for the clinical care of each patient according to recommended guidelines¹⁴. An interruptive sedation strategy was used by bedside nurses, and sedation levels and pain intensity were assessed with the Richmond Agitation Sedation Scale (RASS)^{15 16}, the Behavioral Pain Scale (BPS) ,or the Numeric Rating Scale (NRS) ^{17 18} every 4 h in objective to adapt sedatives and analgesics to avoid overuse. Authorized nurses will titrate infusions, including benzodiazepines, propofol, and dexmedetomidine for sedatives and opiates for analgesia, instead of bolus dosing to minimize potential adverse effects.

The sedation analgesia strategy is designed to consider pain treatment before increasing sedatives to minimize the risk of oversedation. The pain will be assessed either by the

BPS in patients unable to communicate or by the NRS, a 1-10 numeric rating scale, in those sufficiently oriented and awake to communicate with the medical staff. Efficacy of the study analgesics drug will be defined as the ability to achieve a score < 3 in both of the pain scoring systems above, evaluated by the bedside nurse. Efficacy of the study sedative drug will be defined as the ability to achieve a sedation score between -2 and 1, set by the patient's medical team using the RASS, a highly reliable and well-validated sedation scale for use within patients over time in the ICU.

Each morning, a daily interruption of sedation (DIS) will be performed at the clinical medical team's discretion. Major opioid infusions needed for active pain will be continued. Recommended criteria to interrupt sedation is used: no drug-induced paralysis, no intracranial hypertension, no myocardial ischemia in the previous 24 h, primary disease healing in progress, hemodynamic stability, the partial pressure of arterial oxygen ≥ 60 mmHg, the fraction of inspired oxygen $\leq 50\%$, and positive end-expiratory pressure ≤ 8 cmH₂O. The interruption of continuous sedation will be coupled with an assessment hourly for wakefulness, defined as the RASS score 1 to 4, and the ability to perform at least 3 of the following requests: eye-opening, tracking, hand squeezing, and toe moving. With the criteria recommended, patients will be able to pass the DIS if they can tolerate it for 4 h and awakening enough. Then, a spontaneous breathing trial (SBT) will immediately be managed.¹⁹ If patients are insufficient for the DIS, sedatives will be restarted at half the previous dose and then titrated to achieve patient comfort. DIS will be performed the next morning again.

Extubation Test

1
2
3
4
5
6
7
8
9
10
11
12
13
14
15
16
17
18
19
20
21
22
23
24
25
26
27
28
29
30
31
32
33
34
35
36
37
38
39
40
41
42
43
44
45
46
47
48
49
50
51
52
53
54
55
56
57
58
59
60

Before extubation, patients will be managed with an SBT. During the SBT, without ventilatory support, patients will be allowed to breathe through a ventilatory circuit with 8cm H₂O PSV, 0 PEEP, and unchanged FiO₂ from the mechanical ventilation period leading up to the SBT.²⁰ Criteria for a successful SBT were: respiratory rate between 8 and 35 breaths/min, arterial oxygen saturation > 88%, less than 20% change in mean arterial pressure or heart rate, no signs of respiratory distress and acute cardiac arrhythmia, no use of accessory muscles, no abdominal paradox, absence of sweating, agitation or impaired vigilance status. Patients pass the SBT if they complete a 60 min trial with the success criteria, and extubation will be implemented 6 h later. Patients who fail the SBT will be ventilated immediately with the ventilator settings used before the trial, and sedatives will be restarted at half the previous dose and then titrated to achieve patient comfort. The SBT will be managed the next morning again. Extubation will be implemented following standardized criteria, but the decision to extubate remains upon the authority of the attending physician in charge of the patient. Researchers did not participate in decisions to extubate patients.

The clinical research team should make sure that the overall research protocol, especially the criteria for sedation and definition of successful SBT, is strictly followed by the bedside nurse and medical teams in charge of the patients. Related information will be reported on the Clinical Research Form.

Assessing Delirium

Delirium will be measured by the bedside nurses according to the Confusion Assessment Method for the ICU (CAM-ICU) until out of ICU or hospital discharge.²¹

Patients will be considered in this state if they have a RASS score ≥ -3 and a positive CAM-ICU, defined as positive with the symptoms of feature 1, feature 2, and either feature 3 or feature 4 as follows:

Feature 1: acute onset of mental status change or fluctuation of mental status

Feature 2: inattention

Feature 3: disorganized thinking

Feature 4: altered level of consciousness

Adverse Event Monitoring

Adverse events will also be defined a priori and prospectively monitored. Adverse events associated with acupuncture include bleeding, hematoma, and local infection.

Adverse events related to sedation and analgesia include inadequate pain and sedation management (either pain score > 4 and RASS > 1 for 2 consecutive hours or pain and agitation assumed present if receiving neuromuscular blockade), clinically significant iatrogenic withdrawal. Adverse events associated with mechanical ventilation include accidental removal of medical devices, extubation failure (reintubation within 24 hours), pressure ulcers, catheter-associated bloodstream infections, ventilator-associated pneumonia. Every day, study personnel will monitor and assess the seriousness of all adverse events and document all details to determine whether or not any of the events would be related to acupuncture interventions or the study procedure. A report of all

1
2
3
4
5
6
7
8
9
10
11
12
13
14
15
16
17
18
19
20
21
22
23
24
25
26
27
28
29
30
31
32
33
34
35
36
37
38
39
40
41
42
43
44
45
46
47
48
49
50
51
52
53
54
55
56
57
58
59
60

serious, unexpected, and study-related adverse events will be presented to an independent data and safety monitoring board and the institutional review board within 7 days of occurrence.

Outcomes and Data Collection

The primary outcome is the duration of mechanical ventilation, defined as the time from randomization to successful extubation without reinstitution for the following 48 hours. The secondary outcomes will include the dose of administered sedatives and opiate (absolute value as well as indexed value [total drug in mg/kg ÷ total number of hours from the start of infusion to its ultimate discontinuation]) at comparable clinically individualized target sedation goals throughout the study period, the duration of ICU length of stay, and hospital length of stay. Additional outcomes include the prevalence and days of delirium in ICU, mortality in ICU, and within 28 days after randomization. The day of extubation was considered as the day of death for patients who died while still intubated. Censoring for ICU or hospital length analyses occurred at the time of death or study withdrawal. The number of ventilator free days at 28 days is defined as days alive and not using mechanical ventilation between days 1 and 28. For the 28-day mortality analyses, patients were censored at the time of the last contact alive or at 28 days from enrollment, whichever was first.

Baseline demographic data will be collected from the patients' record by the medical team, including the reason for ICU admission, Acute Physiology and Chronic Health Evaluation (APACHE) II scores and diagnostic classification, Sequential Organ Failure

Assessment (SOFA) scores, hematological and blood chemistry data, and clinical data (detailed information of sedative and analgesic medications administered to the patients before randomization, cardiac safety profile including electrocardiograms and serum troponins, and liver function profile including serum bilirubin and glutamate pyruvate transaminase, etc.). Vital signs such as blood pressure, heart rate, heart rhythm, temperature, and oxygen saturations will be recorded and collected by the bedside nurses, as well as scores of RASS, BPS, NRS, and CAM-ICU. Moreover, adverse events data will also be collected from patients' records.

Patient and public involvement statement

There was no patient or public involvement in the design, conduct, reporting or dissemination plans of this research.

Statistical Analysis

Statistical power was estimated using the reduction in duration of mechanical ventilation as the primary outcome. According to Carrasco and colleagues, the mean (\pm standard deviation) time for current sedation was 54.7 ± 12.3 hours.²² We calculated that a sample size of 48 patients in each group would provide a power of 90% to detect a 15% relative reduction in intubation time at a two-sided significance level of 0.05. With a dropout rate of 20%, the estimated sample size will be 60 patients per group. Thus a total of 180 patients will be enrolled for the study.

The per-protocol set (PPS), including patients who completed the study without having major protocol violations, is used for the evaluation of clinical outcomes. While the full

1
2
3
4
5
6
7
8
9
10
11
12
13
14
15
16
17
18
19
20
21
22
23
24
25
26
27
28
29
30
31
32
33
34
35
36
37
38
39
40
41
42
43
44
45
46
47
48
49
50
51
52
53
54
55
56
57
58
59
60

analysis set (FAS), determined according to the intention-to-treat population (ITT) who underwent randomization except for those who are excluded after randomization, is not only used for evaluation of clinical outcomes but also baseline characteristics to measure the balance of the three groups before intervention. Missing data will be replaced according to the principle of multiple imputation. Continuous data will be presented as median and interquartile range, while categorical data as number and proportions. Normal distribution will be checked by the Kolmogorov test. For continuous variables, normal distributed data will be compared using one-way analysis of variance among three groups, and independent Student's t-test between any of the two groups. While the comparison of non-normally distributed parameters among three groups will be applied by ANOVA (Kruska Wallis), and then Mann-Whitney U-test between any of the two groups. Categorical data will be compared by using Fisher's exact test or the chi-square test. Other factors that might affect the efficacy will be considered as co-variants for covariance analysis or Cox proportional hazards regression model. $P \leq 0.05$ will be considered to indicate statistical significance. All analyses will be done with R statistical software, version 4.0.2.

DISCUSSION

This prospective trial is designed to provide evidence on the beneficial effect of acupuncture on reducing the duration of mechanical ventilation, avoiding excessive sedation and analgesia, as well as improving clinical outcomes in sedating mechanically ventilated ICU patients.

General analgesia and sedation are necessary for mechanically ventilated critically ill patients. However, overuse of sedative and analgesic medications may cause varying degrees of side effects, like respiratory drive reduction.²³ These side effects are associated with worsened clinical outcomes, such as a prolonged time of mechanical ventilation and hospital length of stay, an increased risk of delirium, and even mortality.^{24 25} With many sophisticated attempts to mitigate this clinical problem, it has thus far been identified that optimizing analgesia and sedation strategy is able to prevent excessive sedation and analgesia and improve the clinical outcome by reducing the duration and dosage of sedative and analgesic medications.²⁶⁻²⁸ Thus, it become a key objective to formulate an intensive sedative and analgesic medications strategy when caring for critically ill patients.

The rationale for evaluating the ability of acupuncture on this subject is based on research findings that acupuncture could manage pain relief and facilitate opioid tapering by increasing the μ -opioid receptor binding ability and the opioid peptides release.^{29 30} According to the meta-analysis of electroacupuncture on pain relief, the dosage of analgesics needed in AC group was lower than that in NAC group [MD=-6.33,95%CI (-7.20,-5.46), Z=14.24,P<0.00001] (Figure 2).³¹⁻³⁵ Meanwhile, acupuncture, without adverse effect, has been shown to exert sedation effects in various medical conditions. As it shown in meta-analysis, the bispectral index (BIS) values in AC group was also lower than that in NAC group [MD=-9.98,95%CI(-10.54,-9.42),Z=34.84,P<0.00001] (Figure 3).^{33 36-38} With these promising results, it is

1
2
3
4
5
6
7
8
9
10
11
12
13
14
15
16
17
18
19
20
21
22
23
24
25
26
27
28
29
30
31
32
33
34
35
36
37
38
39
40
41
42
43
44
45
46
47
48
49
50
51
52
53
54
55
56
57
58
59
60

meaningful to assess acupuncture as a potential analgesia and sedation strategy in ameliorating the clinical outcomes in mechanically ventilated critically ill patients.

RCT has been recognized as the gold standard for clinical trials since the late 20th century.³⁹ Another important designed technique to improve the quality of clinical trials is blinding. Over the past several decades, RCT and blinding have been used to avoid bias (selection bias, performance bias, and ascertainment bias) in clinical trials and improve the reliability of effects assessment. Sham acupuncture, aiming to blind the participants and control therapeutic components, is designed as a placebo control. However, this acupuncture technique is relatively difficult to fabricate because it should be both biologically inert and psychologically indistinguishable.⁴⁰ Even previous experience of acupuncture feeling might impact the present perception of verum and sham acupuncture intervention.

In PASSION study, we utilize a rigorous set of methods to minimize bias, such as computer-generated central randomization, parallel control design, and statistical analysis according to the intent-to-treat principle. In control design, the superficial needle insertion without manual or electrical stimulation at non-point is applied to simulate deep skin penetration in the SAC group, which is used as the most predominant type of sham electropuncture method to ensure blinding according to the published literature.⁴¹ However, a few studies reported that superficial needle insertion at non-acupoints might not be physiologically inert since the locations of points are nearby true acupoints.^{42 43} Moreover, researchers found that even mechanical non-penetration can evoke slight acupressure effects and physiological activity.⁴⁴ Both of these factors will

1
2
3
4 affect the effect assessment of acupuncture. Thus, the NA group, avoiding all
5
6 therapeutic components, is designed to clarify if the sham acupuncture could be
7
8 regarded as physiologically inert, as well as compared with the results of the AC group.
9

10
11
12 A potential limitation of this trial is blinding. Given the nature of acupuncture, the
13
14 patients and members of the medical team in the NA group are impossible to be blinded
15
16 throughout the entire duration of this trial. However, adequate measures will be taken
17
18 to put other people in a masked state. We will formulate a set of isolation and secrecy
19
20 strategies for the study coordinator and acupuncturists to achieve satisfactory blinding
21
22 levels in treatment administration. Thus, in both AC and SAC groups, patients and their
23
24 medical team members will be blinded to the patients' acupuncture method. The data
25
26 collectors and the biostatisticians will also be masked of the treatment assignment.
27
28
29
30
31
32

33
34 The PASSION study is designed to demonstrate the efficacy of acupuncture on sedation
35
36 and analgesia in mechanically ventilated critically ill patients. We expect the finding
37
38 would provide evidence-based recommendations for acupuncture use for sedation and
39
40 analgesia in critically ill patients with mechanical ventilation.
41
42
43
44
45
46
47

48 **FUNDING STATEMENT:**

49
50 This study was funded by National Science Foundation (grant No.
51
52 81703877&82074216&82004135), Science and Technology Planning Project of
53
54 Guangzhou (202102010301), a Featured Innovative Project from Guangdong Provincial
55
56 Universities (2019KTSCX029), Young Talents Support Project from China Association
57
58
59
60

1
2
3
4
5
6
7
8
9
10
11
12
13
14
15
16
17
18
19
20
21
22
23
24
25
26
27
28
29
30
31
32
33
34
35
36
37
38
39
40
41
42
43
44
45
46
47
48
49
50
51
52
53
54
55
56
57
58
59
60

of Chinese Medicine (2019-QNRC2-C06), Team of prevention and treatment of acute myocardial infarction with Chinese medicine (2019KCXTD009), Foundation of Guangdong Province of CM (20211187&20201142).

DISCLAIMER

The sponsors have had no role in the project development, in the collection of data, in the preparation of this manuscript, nor the decision to publish. The researchers have complete independence from the sources of funding in all aspects of this study.

PATIENT CONSENT FOR PUBLICATION

Consent obtained from parent(s)/guardian(s).

PROVENANCE AND PEER REVIEW

Not commissioned; externally peer reviewed.

ETHICS AND DISSEMINATION

The study was reviewed and approved by Ethics Committee of Guangdong Province Hospital of Chinese Medicine at Guangzhou University of Chinese Medicine (ZF2021-144-01) and performed in accordance with Guide for the Care and Use of Laboratory Animals published by the US National Institutes of Health (publication No. 85-23, revised 1996).

COMPETING INTERESTS STATEMENT

All authors declare that they have no conflict of interest.

AUTHORS' CONTRIBUTIONS

YZ & SM drafted this manuscript; GY, JW & FC made statistical analysis; MZZ made a critical revision of the manuscript and contributed to the rationalization of the study.

All authors read and approved the final manuscript.

REFERENCE

For peer review only

1
2
3
4
5
6
7
8
9
10
11
12
13
14
15
16
17
18
19
20
21
22
23
24
25
26
27
28
29
30
31
32
33
34
35
36
37
38
39
40
41
42
43
44
45
46
47
48
49
50
51
52
53
54
55
56
57
58
59
60

1. Coursin DB, Skrobik Y. What Is Safe Sedation in the ICU? *New England Journal of Medicine* 2019;380(26):2577-78.
doi: 10.1056/NEJMe1906522

2. Subramaniam B, Shankar P, Shaefi S, et al. Effect of Intravenous Acetaminophen vs Placebo Combined With Propofol or Dexmedetomidine on Postoperative Delirium Among Older Patients Following Cardiac Surgery The DEXACET Randomized Clinical Trial. *Jama-Journal of the American Medical Association* 2019;321(7):686-96.
doi: 10.1001/jama.2019.0234

3. Shelton KT, Qu J, Bilotta F, et al. Minimizing ICU Neurological Dysfunction with Dexmedetomidine-induced Sleep (MINDDS): protocol for a randomised, double-blind, parallel-arm, placebo-controlled trial. *BMJ Open* 2018;8(4):e020316. doi: 10.1136/bmjopen-2017-020316 [published Online First: 2018/04/22]

4. Zhao L, Li D, Zheng H, et al. Acupuncture as Adjunctive Therapy for Chronic Stable Angina: A Randomized Clinical Trial. *Jama Internal Medicine* 2019;179(10):1388-97. doi: 10.1001/jamainternmed.2019.2407

5. Garcia MK, Meng Z, Rosenthal DI, et al. Effect of True and Sham Acupuncture on Radiation-Induced Xerostomia Among Patients With Head and Neck Cancer: A Randomized Clinical Trial. *Jama Network Open* 2019;2(12):e1916910. doi: 10.1001/jamanetworkopen.2019.16910

6. Pei W, Peng R, Gu Y, et al. Research trends of acupuncture therapy on insomnia in two decades (from 1999 to 2018): a bibliometric analysis. *Bmc Complementary and Alternative Medicine* 2019;19(1):225. doi: 10.1186/s12906-019-2606-5

7. He Y, Guo X, May BH, et al. Clinical Evidence for Association of Acupuncture and Acupressure With Improved Cancer Pain A Systematic Review and Meta-Analysis. *Jama Oncology* 2020;6(2):271-78. doi: 10.1001/jamaoncol.2019.5233

8. Smith CA, Armour M, Zhu X, et al. Acupuncture for dysmenorrhoea. *Cochrane Database of Systematic Reviews* 2016(4):CD007854. doi: 10.1002/14651858.CD007854.pub3

9. Manheimer E, Cheng K, Wieland LS, et al. Acupuncture for hip osteoarthritis. *Cochrane Database of Systematic Reviews* 2018(5):CD013010. doi: 10.1002/14651858.Cd013010
10. Dingemann J, Plewig B, Baumann I, et al. Acupuncture in posttonsillectomy pain A prospective, double-blinded, randomized, controlled trial. *Hno* 2017;65:73-79. doi: 10.1007/s00106-016-0290-z
11. Wu M-S, Chen K-H, Chen IF, et al. The Efficacy of Acupuncture in Post-Operative Pain Management: A Systematic Review and Meta-Analysis. *Plos One* 2016;11(3):e0150367. doi: 10.1371/journal.pone.0150367
12. Teoh AYB, Chong CCN, Leung WW, et al. Electroacupuncture-reduced sedative and analgesic requirements for diagnostic EUS: a prospective, randomized, double-blinded, sham-controlled study. *Gastrointestinal Endoscopy* 2018;87(2):476-85. doi: 10.1016/j.gie.2017.07.029
13. MacPherson H, Altman DG, Hammerschlag R, et al. Revised STAndards for Reporting Interventions in Clinical Trials of Acupuncture (STRICTA): extending the CONSORT statement. *Acupuncture in Medicine* 2010;28(2):83-93. doi: 10.1136/aim.2009.001370
14. Barr J, Fraser GL, Puntillo K, et al. Clinical Practice Guidelines for the Management of Pain, Agitation, and Delirium in Adult Patients in the Intensive Care Unit. *Critical Care Medicine* 2013;41(1):263-306. doi: 10.1097/CCM.0b013e3182783b72
15. Ely EW, Truman B, Shintani A, et al. Monitoring sedation status over time in ICU patients - Reliability and validity of the Richmond Agitation-Sedation Scale (RASS). *Jama-Journal of the American Medical Association* 2003;289(22):2983-91. doi: 10.1001/jama.289.22.2983
16. Sessler CN, Gosnell MS, Grap MJ, et al. The Richmond Agitation-Sedation Scale - Validity and reliability in adult intensive care unit patients. *American Journal of Respiratory and Critical Care Medicine* 2002;166(10):1338-44. doi: 10.1164/rccm.2107138
17. Payen JF, Bru O, Bosson JL, et al. Assessing pain in critically ill sedated patients by using a behavioral pain scale.

Critical Care Medicine 2001;29(12):2258-63. doi: 10.1097/00003246-200112000-00004

18. Chanques G, Viel E, Constantin J-M, et al. The measurement of pain in intensive care unit: Comparison of 5 self-report intensity scales. *Pain* 2010;151(3):711-21. doi: 10.1016/j.pain.2010.08.039

19. Girard TD, Kress JP, Fuchs BD, et al. Efficacy and safety of a paired sedation and ventilator weaning protocol for mechanically ventilated patients in intensive care (Awakening and Breathing Controlled trial): a randomised controlled trial. *Lancet* 2008;371(9607):126-34. doi: 10.1016/s0140-6736(08)60105-1

20. Subira C, Hernandez G, Vazquez A, et al. Effect of Pressure Support vs T-Piece Ventilation Strategies During Spontaneous Breathing Trials on Successful Extubation Among Patients Receiving Mechanical Ventilation A Randomized Clinical Trial. *Jama-Journal of the American Medical Association* 2019;321(22):2175-82. doi: 10.1001/jama.2019.7234

21. Hui D, Frisbee-Hume S, Wilson A, et al. Effect of Lorazepam With Haloperidol vs Haloperidol Alone on Agitated Delirium in Patients With Advanced Cancer Receiving Palliative Care A Randomized Clinical Trial. *Jama-Journal of the American Medical Association* 2017;318(11):1047-56. doi: 10.1001/jama.2017.11468

22. Carrasco G, Molina R, Costa J, et al. Propofol vs midazolam in short-, medium-, and long-term sedation of critically ill patients. A cost-benefit analysis. *Chest* 1993;103(2):557-64. doi: 10.1378/chest.103.2.557

23. Liu L, Wu A-P, Yang Y, et al. Effects of Propofol on Respiratory Drive and Patient-ventilator Synchrony during Pressure Support Ventilation in Postoperative Patients: A Prospective Study. *Chinese Medical Journal* 2017;130(10):1155-60. doi: 10.4103/0366-6999.205864

24. Kollef MH, Levy NT, Ahrens TS, et al. The use of continuous IV sedation is associated with prolongation of mechanical ventilation. *Chest* 1998;114(2):541-48. doi: 10.1378/chest.114.2.541

25. Ouimet S, Kavanagh BP, Gottfried S, et al. Incidence, risk factors and consequences of ICU delirium. *Intensive Care Medicine* 2007;33(1):66-73. doi: 10.1007/s00134-006-0399-8

26. Chanques G, Conseil M, Roger C, et al. Immediate interruption of sedation compared with usual sedation care in critically ill postoperative patients (SOS-Ventilation): a randomised, parallel-group clinical trial. *Lancet Respiratory Medicine* 2017;5(10):795-805. doi: 10.1016/s2213-2600(17)30304-1
27. Mehta S, Burry L, Cook D, et al. Daily Sedation Interruption in Mechanically Ventilated Critically Ill Patients Cared for With a Sedation Protocol A Randomized Controlled Trial. *Jama-Journal of the American Medical Association* 2012;308(19):1985-92. doi: 10.1001/jama.2012.13872
28. Asmussen S, Przkora R, Maybauer DM, et al. Meta-Analysis of Electroacupuncture in Cardiac Anesthesia and Intensive Care. *Journal of Intensive Care Medicine* 2019;34(8):652-61. doi: 10.1177/0885066617708558
29. Harris RE, Zubieta J-K, Scott DJ, et al. Traditional Chinese acupuncture and placebo (sham) acupuncture are differentiated by their effects on mu-opioid receptors (MORs). *Neuroimage* 2009;47(3):1077-85. doi: 10.1016/j.neuroimage.2009.05.083
30. Han JS. Acupuncture: neuropeptide release produced by electrical stimulation of different frequencies. *Trends in Neurosciences* 2003;26(1):17-22. doi: 10.1016/s0166-2236(02)00006-1
31. Lin JG, Lo MW, Wen YR, et al. The effect of high and low frequency electroacupuncture in pain after lower abdominal surgery. *Pain* 2002;99(3):509-14. doi: 10.1016/S0304-3959(02)00261-0 [published Online First: 2002/10/31]
32. Chiu JH, Chen WS, Chen CH, et al. Effect of transcutaneous electrical nerve stimulation for pain relief on patients undergoing hemorrhoidectomy: prospective, randomized, controlled trial. *Dis Colon Rectum* 1999;42(2):180-5. doi: 10.1007/BF02237124 [published Online First: 1999/04/22]
33. Chen J, Zhang Y, Li X, et al. Efficacy of transcutaneous electrical acupoint stimulation combined with general anesthesia for sedation and postoperative analgesia in minimally invasive lung cancer surgery: A randomized, double-blind, placebo-controlled trial. *Thorac Cancer* 2020;11(4):928-34. doi: 10.1111/1759-7714.13343 [published Online First: 2020/02/18]

1
2
3
4
5
6
7
8
9
10
11
12
13
14
15
16
17
18
19
20
21
22
23
24
25
26
27
28
29
30
31
32
33
34
35
36
37
38
39
40
41
42
43
44
45
46
47
48
49
50
51
52
53
54
55
56
57
58
59
60

34. El-Rakshy M, Clark SC, Thompson J, et al. Effect of intraoperative electroacupuncture on postoperative pain, analgesic requirements, nausea and sedation: a randomised controlled trial. *Acupunct Med* 2009;27(1):9-12. doi: 10.1136/aim.2008.000075 [published Online First: 2009/04/17]

35. Chen Y, Gong Y, Huai X, et al. Effects of transcutaneous electrical acupuncture point stimulation on peripheral capillary oxygen saturation in elderly patients undergoing colonoscopy with sedation: a prospective randomized controlled trial. *Acupunct Med* 2021;39(4):292-98. doi: 10.1177/0964528420960479 [published Online First: 2020/12/02]

36. Fleckenstein J, Baeumler P, Gurschler C, et al. Acupuncture reduces the time from extubation to 'ready for discharge' from the post anaesthesia care unit: results from the randomised controlled AcuARP trial. *Sci Rep* 2018;8(1):15734. doi: 10.1038/s41598-018-33459-y [published Online First: 2018/10/26]

37. Cabrini L, Gioia L, Gemma M, et al. Bispectral index evaluation of the sedative effect of acupuncture in healthy volunteers. *J Clin Monit Comput* 2006;20(5):311-5. doi: 10.1007/s10877-006-9026-z [published Online First: 2006/09/22]

38. Zheng X, Meng JB, Fang Q. Electroacupuncture reduces the dose of midazolam monitored by the bispectral index in critically ill patients with mechanical ventilation: an exploratory study. *Acupunct Med* 2012;30(2):78-84. doi: 10.1136/acupmed-2011-010095 [published Online First: 2012/03/31]

39. Meldrum ML. A brief history of the randomized controlled trial - From oranges and lemons to the gold standard. *Hematology-Oncology Clinics of North America* 2000;14(4):745-60. doi: 10.1016/s0889-8588(05)70309-9

40. Boutron I, Guittet L, Estellat C, et al. Reporting methods of blinding in randomized trials assessing nonpharmacological treatments. *Plos Medicine* 2007;4(2):370-80. doi: 10.1371/journal.pmed.0040061

41. Chen Z-x, Li Y, Zhang X-g, et al. Sham Electroacupuncture Methods in Randomized Controlled Trials. *Scientific Reports* 2017;7:40837. doi: 10.1038/srep40837

42. Lund I, Lundeberg T. Are minimal, superficial or sham acupuncture procedures acceptable as inert placebo controls?

Acupuncture in medicine : journal of the British Medical Acupuncture Society 2006;24(1):13-5.

43. Lundeberg T, Lund I, Naslund J, et al. The Emperor's sham - wrong assumption that sham needling is sham.

Acupuncture in Medicine 2008;26(4):239-42. doi: 10.1136/aim.26.4.239

44. Kim T-H, Lee MS, Alraek T, et al. Acupuncture in sham device controlled trials may not be as effective as acupuncture

in the real world: a preliminary network meta-analysis of studies of acupuncture for hot flashes in menopausal

women. *Acupuncture in Medicine* 2020;38(1):37-44. doi: 10.1136/acupmed-2018-011671

1
2
3
4
5
6
7
8
9
10
11
12
13
14
15
16
17
18
19
20
21
22
23
24
25
26
27
28
29
30
31
32
33
34
35
36
37
38
39
40
41
42
43
44
45
46
47
48
49
50
51
52
53
54
55
56
57
58
59
60

Table 1. Inclusion and exclusion criteria

A. Inclusion criteria	B. Exclusion criteria
1. Aged 18 years or over and under 80 years;	1. Skin lesions near the acupuncture points;
2. Required mechanical ventilation >24 hours;	2. Coagulopathy (bleeding time >4 min, thrombocytes <50,000/ μ l;
3. Continuous intravenous administration of sedative and analgesic medications;	3. Hypohepatia with Childs-Pugh class B or C;
4. Willingness to provide informed consent prior to enrollment;	4. Second- or third-degree atrioventricular block;
5. Be able to comply with all follow-up evaluations (in investigator's opinion).	5. Severe dementia;
	6. Psychiatric disorder;
	7. Neurological disease;
	8. Active seizures;
	9. Alcohol or drug abuse;
	10. Benzodiazepine dependency;
	11. Moribund state with the planned withdrawal of life support;
	12. Family or physician refusal;

13. Pregnancy or lactation;

14. Currently participated in any other
investigational therapeutic or device trial.

For peer review only

1
2
3
4
5
6
7
8
9
10
11
12
13
14
15
16
17
18
19
20
21
22
23
24
25
26
27
28
29
30
31
32
33
34
35
36
37
38
39
40
41
42
43
44
45
46
47
48
49
50
51
52
53
54
55
56
57
58
59
60

Figure legend:

Figure 1. Trial design of PASSION study

Figure 2. Forest plot of AC group versus NAC group.

Figure 3. Forest plot of AC group versus NAC group.

For peer review only

Protected by copyright, including for uses related to text and data mining, AI training, and similar technologies.
Erasmus Hogeschool

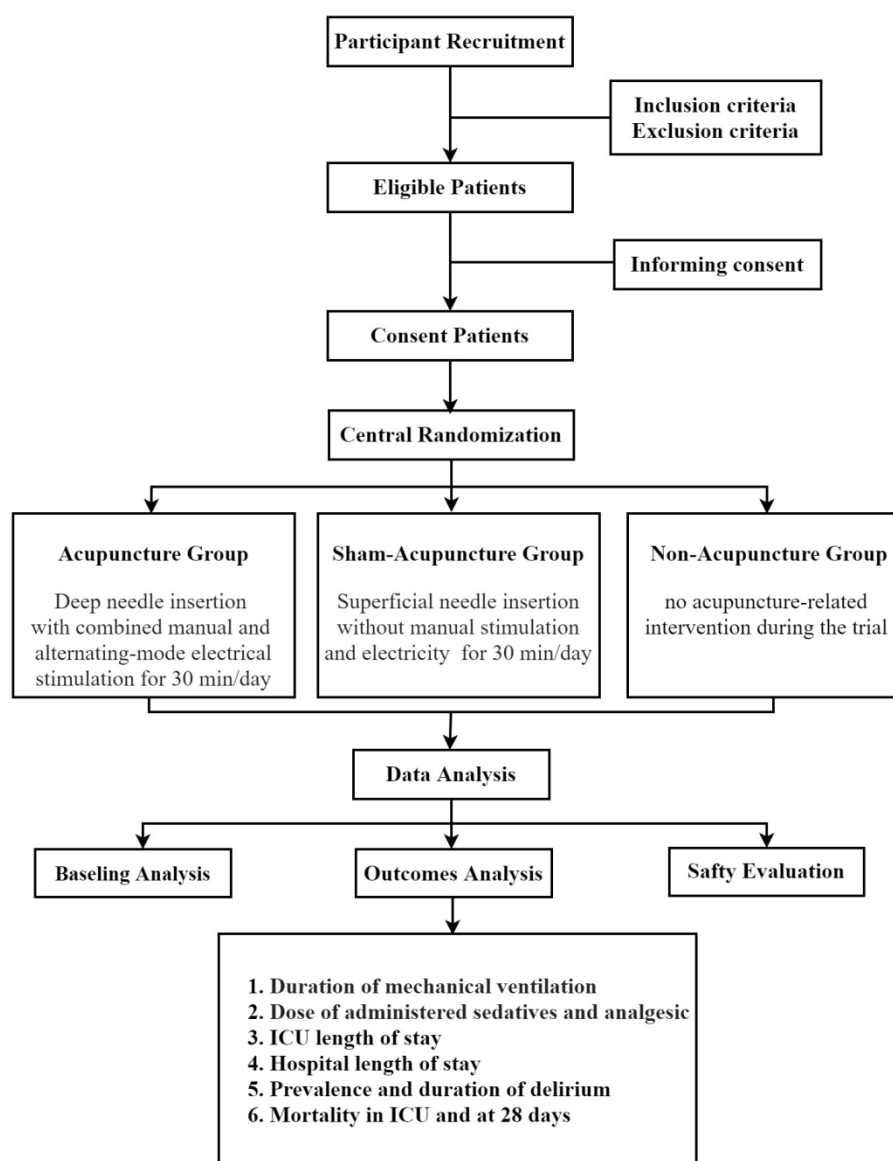


Figure 1

130x165mm (300 x 300 DPI)

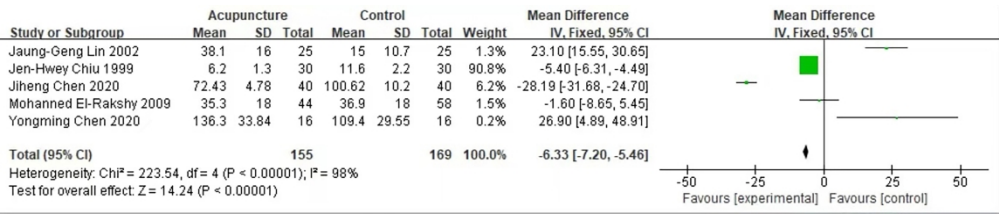


Figure 2

219x46mm (300 x 300 DPI)

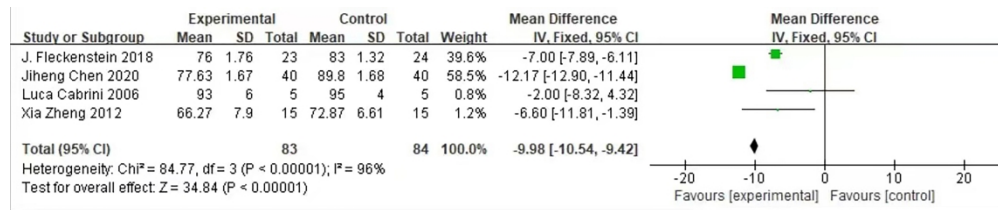


Figure 3

219x45mm (300 x 300 DPI)

BMJ Open

Prospective comparison of acupuncture with sham acupuncture to determine impact on sedation and analgesia in mechanically ventilated critically ill patients (PASSION study): protocol for a randomized controlled trial

Journal:	<i>BMJ Open</i>
Manuscript ID	bmjopen-2021-059741.R1
Article Type:	Protocol
Date Submitted by the Author:	14-May-2022
Complete List of Authors:	Zhang, Yuzhuo; Guangzhou University of Chinese Medicine Yang, Guang; Guangzhou University of Chinese Medicine Wei, Jinyi; Guangzhou University of Chinese Medicine Chen, Fangliang; Guangzhou University of Chinese Medicine Zhang, Min-Zhou; Guangzhou University of Chinese Medicine Mao, Shuai; Guangzhou University of Chinese Medicine; Guangdong Provincial Hospital of Chinese Medicine, Department of Critical Care Medicine
Primary Subject Heading:	Intensive care
Secondary Subject Heading:	Complementary medicine
Keywords:	Adult intensive & critical care < ANAESTHETICS, Adult anaesthesia < ANAESTHETICS, Pain management < ANAESTHETICS

SCHOLARONE™
Manuscripts

1
2
3
4
5 1 **Prospective comparison of acupuncture with sham acupuncture to**
6
7 2 **determine impact on sedation and analgesia in mechanically ventilated**
8
9 3 **critically ill patients (PASSION study): Protocol for a randomized**
10
11 4 **controlled trial**
12
13

14
15 5 Yuzhuo Zhang, Ph.D. ^{1*}
16
17 6 Guang Yang, M.D. ^{1,2*}
18
19 7 Jinyi Wei, M.D. ¹
20
21 8 Fangliang Chen, M.D. ¹
22
23 9 Minzhou Zhang, M.D. ^{1,2,4Δ}
24
25 10 Shuai Mao, M.D. ^{1,2,4Δ}
26
27
28
29

30
31
32 11 ¹ *Second Clinical College, Guangzhou University of Chinese Medicine, Guangzhou*
33 12 *510405, China*
34
35 13 ² *Department of Critical Care Medicine, Guangdong Provincial Hospital of Chinese*
36 14 *Medicine, Guangzhou 510120, China*
37
38 15 ³ *Guangdong Provincial Branch of National Clinical Research Centre for Chinese*
39 16 *Medicine Cardiology, Guangzhou 510120, China*
40
41
42
43

44 18 *The first two authors contribute equally to this article.

45
46 19 ΔCorrespondence to:
47
48 20 Prof. Shuai MAO
49 21 Department of Critical Care Medicine,
50 22 Guangdong Provincial Hospital of Chinese Medicine,
51 23 Guangzhou 510120, China
52 24 Phone: 86-20-81887233
53 25 Fax: 86-20-81867705
54 26 E-mail: maoshuai@gzucm.edu.cn
55 27 Or Prof. Minzhou Zhang minzhouzhang@gzucm.edu.cn
56
57
58
59
60

ABSTRACT

Introduction Sedation and analgesia are recommended to be employed in the intensive care unit (ICU) to enhance patient comfort and safety, facilitate mechanical ventilation, and reduce oxygen demands. However, the increasing evidence demonstrates that excessive sedation and analgesia might prolong mechanical ventilation and increase costs and mortality. Acupuncture is known to be able to attenuate pain, anxiety, and agitation symptoms while avoiding excessive sedation and analgesia caused by drugs. Therefore, we present a protocol to investigate whether acupuncture, used for sedation and analgesia, can reduce the duration of mechanical ventilation, save medical resources, and reduce the mortality of critically ill patients receiving mechanical ventilation.

Methods and analysis Prospective, randomized controlled trial (RCT) is conducted on 180 adult medical/surgical ICU patients with mechanical ventilation needing sedation at 3 ICUs between 03 November 2021 and 16 August 2023. Patients will be treated with analgesia and sedation to achieve desired target sedation levels (Richmond Agitation Sedation Score of -2 to 1). Enrolled patients will be randomly assigned in a ratio of 1:1:1 to receive deep needle insertion with combined manual and alternating-mode electrical stimulation on acupoints (AC group), superficial needle insertion without manual stimulation and electrical stimulation on non-acupoints (SAC group), or no acupuncture intervention (NAC group).

The primary outcome is the duration of mechanical ventilation from randomization until patients are free of mechanical ventilation (including noninvasive) without reinstitution for the following 48 hours. Secondary endpoints include the dose of administered sedatives and analgesic at comparable sedation levels throughout the study, ICU length of stay, hospital length of stay. Additional outcomes include the prevalence and days of delirium in ICU, mortality in ICU and within 28 days after randomization, and the number of ventilator free days in 28 days.

1
2
3
4 54 **Ethics and dissemination** This trial was approved by the ethics committee at
5
6 55 Guangdong Provincial Hospital of Chinese Medicine. We will publish the study results.
7
8
9 56 **Trial Registration numbers: ChiCTR2100052650**
10
11
12 57 **Keywords:**
13
14 58 acupuncture; sedation; analgesia; critically ill patients; nonpharmacological therapy
15
16
17 59 **Word Count: 3805**
18
19 60

For peer review only

Strengths and limitations of this study

- This study is an RCT to investigate both the sedative and analgesic effects of acupuncture on critically ill patients needing mechanical ventilation in ICU.
- This study provides a sedative and analgesic strategy for mechanically ventilated critically ill patients with less side effects.
- The primary endpoint is the duration of mechanical ventilation from randomization until patients are free of mechanical ventilation (including noninvasive) without reinstitution for the following 48 hours.
- Secondary endpoints include the dose of administered sedatives and analgesics at comparable sedation levels throughout the study, ICU length of stay, and hospital length of stay.
- Limitations are the non-blinded interventions due to the nature of acupuncture.

1

2

3

4 73

5

6

73

INTRODUCTION

74

75

76

77

78

79

80

81

82

83

Sedative and analgesic medications are routinely administered to mechanically ventilated critically ill patients to reduce pain, anxiety, and agitation, as well as to allow patients to tolerate invasive procedures in the intensive care unit (ICU).¹ Opiates are most commonly used analgesics, while benzodiazepines, propofol, or dexmedetomidine are typically used to prevent or reduce anxiety and agitation.² However, overuse of these medications is associated with worsened clinical outcomes, such as prolonged mechanical ventilation and hospital length of stay, increased risk of altered mental status, and even higher mortality.³ Thus, reducing the unnecessary dosage of sedative and analgesic medications, as well as their side effects while providing desired sedation has always been a key objective when caring for critically ill patients.

84

85

86

87

88

89

90

91

92

93

94

95

96

As a therapeutic modality with fewer adverse effects, acupuncture has been used in China and other Asian countries for thousands of years to treat various conditions.⁴⁻⁶ Studies of acupuncture usually focuses on its analgesic effect, such as relieving pain and partly reducing opioid-related side effects during or after surgical procedures.⁷⁻¹¹ Particularly, the Centers for Medicare & Medicaid Services (CMS) of the USA finalizes a decision to cover acupuncture for chronic low back pain for Medicare beneficiaries in January 2020. Moreover, some studies have investigated the use of acupuncture on reducing sedative and analgesic drug demands, and the duration of mechanical ventilation, while improving patients' experience during mechanical ventilation.¹²⁻¹⁵ However, there are still a few discrepant research findings on the sedative and analgesic effects of acupuncture.^{16 17} And studies investigating both the sedative and analgesic effects of acupuncture among all critically ill patients needing mechanical ventilation in ICU are limited.

97

98

99

Therefore, the PASSION study is designed to be an RCT which investigate the efficacy of acupuncture on sedation and analgesia in mechanically ventilated critically ill patients. We are going to test the hypothesis that acupuncture, as adjunctive therapy to

sedation and analgesia therapies, could reduce the duration of mechanical ventilation, the dose of administered sedatives and analgesics, and subsequently improve other clinical outcomes for critically ill patients when compared with sham acupuncture or non-acupuncture.

METHODS

Study Design Overview

This is a prospective, parallel-group, controlled trial will recruit 180 patients with a computer-generated allocation sequence and centralized randomization at tertiary and regional ICUs in 3 hospitals (Guangdong Provincial Hospital of Chinese Medicine, Charity Hospital of Guangzhou, University Hospital) in South China. Recruitment officially began on 03 November 2021, and the final follow-up of the last subject will not exceed 16 August 2023. Eligible patients will be randomly assigned, in a ratio of 1:1:1, to receive deep needle insertion with combined manual and alternating-mode electrical stimulation on acupoints (AC group, n =60), superficial needle insertion without manual or electrical stimulation on non-acupoints (SAC group, n =60) for 30 min/day, or no acupuncture intervention (NAC group, n =60), respectively.

Participants will be assessed for the duration of mechanical ventilation, as well as the dose of administered sedatives and analgesics at comparable sedation levels, from randomization until patients are free of mechanical ventilation (including noninvasive) without reinstitution for the following 48 hours. They will be also assessed for whether acupuncture can achieve better clinical outcomes than SAC and NAC treatment. The design of the trial is summarized in Figure 1.

Ethical Requirements and Registration

This protocol is approved by the Institutional Human Clinical Research Ethical Committee at Guangdong Provincial Hospital of Chinese Medicine (Guangzhou, China) in October 2021 with permission number ZF2021-144-01. The PASSION study was

1
2
3
4 126 registered on Nov 3, 2021 (ClinicalTrials.gov, number ChiCTR2100052650) and will
5
6 127 be conducted following the Declaration of Helsinki from 03 November 2021 to 16
7
8 128 August 2023.

9
10
11 129 Written informed consent will be provided before enrollment voluntarily. Considering
12
13 130 that patients will be sedated following ICU admission, complete adherence to patient
14
15 131 consent is deemed impossible. Patients or their authorized surrogates will be informed
16
17 132 by the researchers of the investigational nature and details of the study, together with
18
19 133 the possible risks and all the benefits. Written informed consent will be subsequently
20
21 134 obtained from either of them. Patients from whom surrogate consent is obtained are
22
23 135 asked again to provide informed consent once determined to be competent. They can
24
25 136 also withdraw from the study at any time they wish. Also, the investigator can decide to
26
27 137 withdraw a subject from the study for urgent medical reasons. The researcher should
28
29 138 complete the case report form (CRF) and record the reason for dropping out.

30
31
32 139 **Patients**

33
34 140 Patients from medical and surgical ICU, aging from 18 to 80 years, for expected
35
36 141 mechanical ventilation longer than 24 hours, with agitation and/or discomfort after
37
38 142 recovering from drugs used to facilitate endotracheal intubation, requiring sedation and
39
40 143 agitation by continuous intravenous administration deemed by the ICU physician, are
41
42 144 eligible for participation as soon as they or their authorized surrogates are willing to
43
44 145 give informed consent (Table 1).

46
47 146 Exclusion criteria include skin lesions near the acupuncture points, coagulopathy
48
49 147 (bleeding time >4 min, thrombocytes <50,000/ μ l), neurological disease (previous stroke,
50
51 148 cerebral palsy, etc.) that would confound the diagnosis of delirium, active seizures,
52
53 149 severe dementia, relevant psychiatric disorder, hypohepatia with Childs-Pugh class B
54
55 150 or C, second- or third-degree atrioventricular block, alcohol or drug abuse,
56
57 151 benzodiazepine dependency, a moribund state with the planned withdrawal of life
58
59
60

support, family or physician refusal, pregnancy or lactation, currently participating in any other investigational therapeutic or device trial (Table 1).

ICU standard treatment

As a standard in each ICU of our study, mechanically ventilated critically ill patients will be treated in a single treatment room. They will be taken care of by a trained ICU physician responsible for all treatment decisions, including sedation analgesia management plans made in consultation with the bedside nurses. They will also receive one-to-one nursing care to adjust the treatment based on the patient's response in time. A team of medical officers will review patient care every day.

Randomization and blinding

Eligible patients will be stratified by participating sites to avoid patient-level contamination from the systems-level organizational change in sedation practice and, within each ICU, assigned to the AC, SAC, or NAC group in an equal ratio via computer-generated randomization. In detail, an independent study coordinator will log into the central randomization system using a password-protected account and enter inclusion and exclusion criteria to ensure eligibility. After entering a patient's name and identification card number, a randomization sequence will be generated in blocks of varying sizes and stratified by the site under the control of the central computer system. The random sequence will then be concealed in sealed envelopes and sent to an acupuncturist from the assigned patient's site by the study coordinator.

Allocation of participants will be known to the study coordinator and acupuncturists who will not be involved in outcome assessment and be required to sign a confidentiality agreement about patient allocation. All patients will be treated in a single treatment room. In both AC and SAC groups, patients, bedside nurses, and physicians will be blinded to which acupuncture method the patients will receive. The data collectors and the biostatisticians will be masked from the treatment assignment.

1
2
3
4 178
5
6 179
7
8 180
9
10 181
11
12 182
13
14 183
15
16
17 184
18
19 185
20
21 186
22
23 187
24
25 188
26
27 189
28
29 190
30
31 191
32
33 192
34
35 193
36
37 194
38
39 195
40
41 196
42
43 197
44
45
46 198
47
48 199
49
50 200
51
52 201
53
54 202
55
56
57
58
59
60

Acupuncture interventions and procedures

The acupuncture interventions will be developed by a consensus of acupuncture experts according to the Standards for Reporting of Controlled Trials in Acupuncture (STRICTA).¹⁸ Patients will be assigned in a ratio of 1:1:1 to AC group (n=60), SAC group (n=60), and NAC group (n=60). Besides, each group shares the same basic Sedation Analgesia Strategy.

For patients in the AC group, 8 disposable sterile acupuncture needles (filiform needles made of stainless steel, Beijing Hanyi Medical Instruments, China) with a length of 40 mm and a diameter of 0.30 mm will be inserted into acupuncture points at Baihui (DU20), Yintang (EX-HN3), and bilateral acupoints of Shenmen (HT7), Hegu (LI4), Taichong (LR3) according to the theory of traditional Chinese medicine. The localization of these points is measured with a unit of *cun*, a traditional Chinese unit of length. One *cun* of a person is defined as the width of the thumb himself, whereas four fingers are defined as 3 *cun*. The insertion will be followed by manual stimulation, a lifting and thrusting technique combined with twirling and rotating the needle sheath to produce a sensation of soreness, numbness, distention, or radiating. This sensation is known as “*Deqi*” and is considered to be indicative of effective needling. Then, alternating-mode electrical stimulation will be given with the parameters: bursts alternating at 2 Hz and 100 Hz every 3 s, with 10-15 mA intensity inducing no discomfort and no muscle contraction.

For patients in the SAC group, superficial needle insertion with a depth of 2 mm and no manual stimulation will be performed for 30 min/day. The same sort of needles with the AC group will be placed 1 cm distant lateral the used acupoints that are not known as AC points. The electrical stimulator will likewise be connected but without electrical stimulation. (Figure 2)

Patients in the NAC group will receive no acupuncture-related intervention during the trial. But they can receive a free 12-session daily acupuncture treatment after completing the study at their convenience.

Each site will be required to have 2 licensed acupuncturists with more than 3 years of experience and specialized training in the acupuncture protocols before starting the study. The acupuncturists will be responsible for the whole acupuncture process but are not further involved in this study.

Basic Sedation Analgesia Strategy

In this study, diagnosis and therapeutic management of agitation and pain will be prescribed by the physicians responsible for the clinical care of each patient according to recommended guidelines¹⁹. An interruptive sedation strategy will be adopted by bedside nurses, and sedation levels and pain intensity will be assessed with the Richmond Agitation Sedation Scale (RASS)^{20 21}, the Behavioral Pain Scale (BPS), or the Numeric Rating Scale (NRS)^{22 23} every 4 h in order to adapt sedatives and analgesics to avoid overuse. Authorized nurses will titrate infusions, including benzodiazepines, propofol, and dexmedetomidine for sedatives and opiates for analgesia, instead of bolus dosing to minimize potential adverse effects.

The sedation analgesia strategy is designed to consider pain treatment before increasing sedatives to minimize the risk of oversedation. The pain will be assessed either by the BPS in patients unable to communicate or by the NRS, a 1-10 numeric rating scale, in those sufficiently oriented and awake to communicate with the medical staff. Efficacy of the study analgesics drug will be defined as the ability to achieve a score < 3 in both of the pain scoring systems above, evaluated by the bedside nurse. Efficacy of the sedative drug will be defined as the ability to achieve a sedation score between -2 and 1, set by the patient's medical team using the RASS (a highly reliable and well-validated sedation scale for use within patients) over time in the ICU.

1
2
3
4 229 Each morning, a daily interruption of sedation (DIS) will be performed at the clinical
5
6 230 medical team's discretion. Major opioid infusions needed for active pain will be
7
8 231 continued. Recommended criteria to interrupt sedation are used: no drug-induced
9
10 232 paralysis, no intracranial hypertension, no myocardial ischemia in the previous 24 h,
11
12 233 primary disease healing in progress, hemodynamic stability, the partial pressure of
13
14 234 arterial oxygen ≥ 60 mmHg, the fraction of inspired oxygen $\leq 50\%$, and positive end-
15
16 235 expiratory pressure ≤ 8 cmH₂O. The interruption of continuous sedation will be coupled
17
18 236 with an assessment hourly for wakefulness, defined as the RASS score 1 to 4, and the
19
20 237 ability to perform at least 3 of the following requests: eye-opening, tracking, hand
21
22 238 squeezing, and toe moving. With the criteria recommended, patients will be able to pass
23
24 239 the DIS if they can tolerate it for 4 h and keep awakening enough. Then, a spontaneous
25
26 240 breathing trial (SBT) will immediately be managed.²⁴ If patients are insufficient for the
27
28 241 DIS, sedatives will be restarted at half the previous dose and then titrated to achieve
29
30 242 patient comfort. DIS will be performed the next morning again.

31
32
33 243 **Extubation Test**

34
35
36 244 Before extubation, patients will be managed with an SBT. During the SBT, without
37
38 245 ventilatory support, patients will be allowed to breathe through a ventilatory circuit with
39
40 246 8cm H₂O PSV, 0 PEEP, and unchanged FiO₂ from the mechanical ventilation period
41
42 247 leading up to the SBT.²⁵ The criteria for a successful SBT are respiratory rate between
43
44 248 8 and 35 breaths/min, arterial oxygen saturation $> 88\%$, less than 20% change in mean
45
46 249 arterial pressure or heart rate, no signs of respiratory distress and acute cardiac
47
48 250 arrhythmia, no use of accessory muscles, no abdominal paradox, absence of sweating,
49
50 251 agitation or impaired vigilance status. Patients will pass the SBT if they complete a 60
51
52 252 min trial meeting the criteria, and extubation will be implemented 6 h later. Patients who
53
54 253 fail the SBT will be ventilated immediately with the ventilator settings used before the
55
56 254 trial, and sedatives will be restarted at half the previous dose and then titrated to achieve
57
58 255 patient comfort. The SBT will be managed the next morning again. Extubation will be
59
60 256 implemented following standardized criteria, but the decision to extubate remains upon

the authority of the attending physician in charge of the patient. Researchers will not participate in decisions to extubate patients.

The clinical research team will make sure that the overall research protocol, especially the criteria for sedation and definition of successful SBT, is strictly followed by the bedside nurse and medical teams in charge of the patients. Related information will be reported on the clinical research form.

Assessing Delirium

Delirium will be measured by the bedside nurses according to the Confusion Assessment Method for the ICU (CAM-ICU) until out of ICU or hospital discharge.²⁶ Patients will be considered in this state if they have a RASS score ≥ -3 and a positive CAM-ICU, defined as positive with the symptoms of feature 1, feature 2, and either feature 3 or feature 4 as follows:

Feature 1: acute onset of mental status change or fluctuation of mental status

Feature 2: inattention

Feature 3: disorganized thinking

Feature 4: altered level of consciousness

Adverse Event Monitoring

Adverse events will also be defined a priori and prospectively monitored. Adverse events associated with acupuncture include bleeding, hematoma, and local infection. Adverse events related to sedation and analgesia include inadequate pain and sedation management (either pain score > 4 and RASS > 1 for 2 consecutive hours or pain and agitation assumed present if receiving neuromuscular blockade), clinically significant iatrogenic withdrawal. Adverse events associated with mechanical ventilation include accidental removal of medical devices, extubation failure (reintubation within 24 hours), pressure ulcers, catheter-associated bloodstream infections, ventilator-associated

1
2
3
4 282 pneumonia. Every day, research personnel will monitor and assess the seriousness of all
5
6 283 adverse events and document all details to determine whether the events are related to
7
8 284 acupuncture interventions or the study procedure, as well as developing further
9
10 285 treatment strategies including whether it is necessary to uncover blindness. A report of
11
12 286 all serious, unexpected, and study-related adverse events will be presented to an
13
14 287 independent data and safety monitoring board and the institutional review board within
15
16 288 7 days of occurrence.

17
18
19 289 **Outcomes and Data Collection**

20
21 290 The primary outcome is the duration of mechanical ventilation, defined as the time from
22
23 291 randomization to successful extubation without reinstitution for the following 48 hours.
24
25 292 The secondary outcomes will include the dose of administered sedatives and opiate
26
27 293 (absolute value as well as indexed value [total drug in mg/kg ÷ total number of hours
28
29 294 from the start of infusion to its ultimate discontinuation]) at comparable clinically
30
31 295 individualized target sedation goals throughout the study, the duration of ICU length of
32
33 296 stay, and hospital length of stay. Additional outcomes include the prevalence and days
34
35 297 of delirium in ICU, mortality in ICU and within 28 days after randomization, and the
36
37 298 number of ventilator-free days in 28 days.
38
39

40 299 The day of extubation is considered as the day of death for patients who died while still
41
42 300 intubated. Censoring for ICU or hospital length analyses occurred at the time of death
43
44 301 or study withdrawal. The number of ventilator-free days in 28 days is defined as days
45
46 302 alive and not using mechanical ventilation between days 1 and 28. For the 28-day
47
48 303 mortality analyses, patients are censored at the time of the last contact alive or at 28
49
50 304 days from enrollment, whichever is first.
51
52

53 305 Baseline demographic data will be collected from patients' records by the medical team,
54
55 306 including the reason for ICU admission, Acute Physiology and Chronic Health
56
57 307 Evaluation (APACHE) II scores and diagnostic classification, Sequential Organ Failure
58
59 308 Assessment (SOFA) scores, hematological and blood chemistry data, and clinical data
60

(detailed information of sedative and analgesic medications administered to the patients before randomization, cardiac safety profile including electrocardiograms and serum troponins, and liver function profile including serum bilirubin and glutamate pyruvate transaminase, etc.). Vital signs such as blood pressure, heart rate, heart rhythm, temperature, and oxygen saturations will be recorded and collected by the bedside nurses, as well as scores of RASS, BPS, NRS, and CAM-ICU. Moreover, adverse events data will also be collected from patients' records. All of data mentioned above will be entered using the double entry method.

Patient and public involvement statement

There is no patient or public involvement in the design, conduct, reporting or dissemination plans of this research.

Statistical Analysis

Statistical power is estimated using the reduction in duration of mechanical ventilation as the primary outcome. According to Carrasco and colleagues, the mean (\pm standard deviation) time for current sedation is 54.7 ± 12.3 hours.²⁷ We calculate that a sample size of 48 patients in each group will provide a power of 90% to detect a 15% relative reduction in intubation time at a two-sided significance level of 0.05. With a dropout rate of 20%, the estimated sample size will be 60 patients per group. Thus, a total of 180 patients will be enrolled in the study.

The per-protocol set (PPS), including patients who complete the study without having major protocol violations, is used for the evaluation of clinical outcomes. While the full analysis set (FAS), determined according to the intention-to-treat population (ITT) who undergo randomization except for those who are excluded after randomization, is not only used for evaluation of clinical outcomes but also baseline characteristics to measure the balance of the three groups before intervention. Missing data will be replaced according to the principle of multiple imputation. Continuous data will be presented as median and interquartile range, while categorical data as numbers and proportion.

1
2
3
4 336
5
6 337
7
8 338
9
10 339
11
12 340
13
14 341
15
16 342
17
18 343
19
20 344
21
22 345
23
24
25 346
26
27 347
28
29 348
30
31 349
32
33 350
34
35
36 351
37
38 352
39
40 353
41
42 354
43
44 355
45
46 356
47
48 357
49
50 358
51
52 359
53
54 360
55
56 361
57
58
59
60

Normal distribution will be checked by the Kolmogorov test. For continuous variables, normal distributed data will be compared using one-way analysis of variance among three groups, and independent Student's t-test between any of the two groups. While the comparison of non-normally distributed parameters among three groups will be applied by ANOVA (Kruska Wallis), and then the Mann-Whitney U-test between any of the two groups. Categorical data will be compared by using Fisher's exact test or the chi-square test. Other factors that may affect the efficacy will be considered as co-variants for covariance analysis or Cox proportional hazards regression model. $P \leq 0.05$ will be considered to indicate statistical significance. All analyses will be done with R statistical software, version 4.0.2.

DISCUSSION

This prospective trial is designed to provide evidence on the beneficial effect of acupuncture on reducing the duration of mechanical ventilation, avoiding excessive sedation and analgesia, as well as improving clinical outcomes in sedating mechanically ventilated ICU patients.

General analgesia and sedation are necessary for mechanically ventilated critically ill patients. However, overuse of sedative and analgesic medications may cause varying degrees of side effects, like respiratory drive reduction.²⁸ These side effects are associated with worsened clinical outcomes, such as prolonged mechanical ventilation and hospital length of stay, increased risk of delirium, and even higher mortality.^{29 30} With many sophisticated attempts to mitigate this clinical problem, it has thus far been identified that optimizing analgesia and sedation strategy is able to prevent excessive sedation and analgesia and improve the clinical outcome by reducing the duration and dosage of sedative and analgesic medications.³¹⁻³³ Thus, it become a key objective to formulate an intensive sedative and analgesic medications strategy when caring for critically ill patients.

The rationale for evaluating the ability of acupuncture on this subject is based on research findings that acupuncture can manage pain relief and facilitate opioid tapering by increasing the μ -opioid receptor binding ability and the release of the opioid peptide.^{34 35} According to the meta-analysis of acupuncture on pain relief, visual analog scale (VAS) pain scores in the AC group is lower than that in the NAC group [MD=-11.13, 95%CI(-13.59,-8.68), Z=8.9, P < 0.00001], Figure 3A.³⁶⁻⁵⁰ However, there is a substantial heterogeneity of results in these trials ($I^2 = 70\%$). As shown in Figure 3B, heterogeneity decreases ($I^2 = 14\%$) when the studies by Xian Wang and Zheng Lihong are excluded, and the AC group consistently shows a greater pain relief compared to NAC group [MD=-10.92, 95%CI(-12.93,-8.91), Z=10.66, P < 0.00001]. Meanwhile, acupuncture, without adverse effects, has been shown to exert sedation effects in various medical conditions. As it shown in the meta-analysis, with a high heterogeneity($I^2 = 95\%$), the bispectral index (BIS) value in the AC group is also lower than that in the NAC group [MD=-5.82,95%CI (-9.36, -2.27), Z=3.22, P=0.001], Figure 4A.⁵¹⁻⁵⁶ As shown in Figure 4B, heterogeneity decreases ($I^2 = 0\%$) when the studies by J. Fleckenstein and Jiheng Chen are excluded, and the AC group consistently shows a better sedative effect compared to NAC group [MD=-3.18,95%CI(-5.53,-0.84),Z=2.66, P < 0.008]. In addition, previous studies have shown that Yintang (EX-HN3) and Shenmen (HT7) have good sedative effects, Hegu (LI4) and Taichong (LR3) have analgesic advantages, while Baihui (DU20) appears both sedative and analgesic effects.^{54 57-60} With these promising results, it is meaningful to assess acupuncture as a potential analgesia and sedation strategy in ameliorating the clinical outcomes in mechanically ventilated critically ill patients.

RCT has been recognized as the gold standard for clinical trials since the late 20th century.⁶¹ Another important designed technique to improve the quality of clinical trials is blinding. Over the past several decades, RCT and blinding have been used to avoid bias (selection bias, performance bias, and ascertainment bias) in clinical trials and

1
2
3
4 389 improve the reliability of effects assessment. Sham acupuncture, aiming to blind the
5
6 390 participants and control therapeutic components, is designed as a placebo control.
7
8 391 However, this acupuncture technique is relatively difficult to fabricate because it should
9
10 392 be both biologically inert and psychologically indistinguishable.⁶² Even previous
11
12 393 experience of acupuncture feeling might impact the present perception of verum and
13
14 394 sham acupuncture intervention.

15
16
17 395 In PASSION study, we utilize a rigorous set of methods to minimize bias, such as
18
19 396 computer-generated central randomization, parallel control design, and statistical
20
21 397 analysis according to the intent-to-treat principle. In control design, the superficial
22
23 398 needle insertion without manual or electrical stimulation at the non-point is applied to
24
25 399 simulate deep skin penetration in the SAC group, which is used as the most predominant
26
27 400 type of sham electropuncture method to ensure blinding according to the published
28
29 401 literature.⁶³ However, a few studies reported that superficial needle insertion at non-
30
31 402 acupoints might not be physiologically inert since the locations of points are nearby true
32
33 403 acupoints.^{64 65} Moreover, researchers found that even mechanical non-penetration can
34
35 404 evoke slight acupressure effects and physiological activity.⁶⁶ Both of these factors will
36
37 405 affect the effect assessment of acupuncture. Thus, the NA group, avoiding all
38
39 406 therapeutic components, is designed to clarify whether the sham acupuncture can be
40
41 407 regarded as physiologically inert, as well as compared with the results of the AC group.

42
43
44 408 A potential limitation of this trial is blinding. Given the nature of acupuncture, the
45
46 409 patients and members of the medical team in the NA group are impossible to be blinded
47
48 410 throughout the entire duration of this trial. However, adequate measures will be taken
49
50 411 to put the patients and medical team members of the other two groups in a masked state.
51
52 412 For example, we will formulate a set of isolation and secrecy strategies for the study
53
54 413 coordinator and acupuncturists to achieve satisfactory blinding levels in treatment
55
56 414 administration. Thus, in both AC and SAC groups, patients and their medical team
57
58 415 members will be blinded to the patients' acupuncture method. The data collectors and
59
60 416 the biostatisticians will also be masked from the treatment assignment.

The PASSION study is designed to demonstrate the efficacy of acupuncture on sedation and analgesia in mechanically ventilated critically ill patients. We expect the finding can provide evidence-based recommendations for acupuncture use for sedation and analgesia in critically ill patients with mechanical ventilation.

FUNDING STATEMENT:

This study was funded by National Science Foundation (grant No. 81703877&82074216&82004135), Science and Technology Planning Project of Guangzhou (202102010301), a Featured Innovative Project from Guangdong Provincial Universities (2019KTSCX029), Young Talents Support Project from China Association of Chinese Medicine (2019-QNRC2-C06), Team of prevention and treatment of acute myocardial infarction with Chinese medicine (2019KCXTD009), Foundation of Guangdong Province of CM (20211187&20201142).

DISCLAIMER

The sponsors have had no role in the project development, in the collection of data, in the preparation of this manuscript, nor the decision to publish. The researchers have complete independence from the sources of funding in all aspects of this study.

PATIENT CONSENT FOR PUBLICATION

Consent obtained from parent(s)/guardian(s).

PROVENANCE AND PEER REVIEW

Not commissioned; externally peer reviewed.

ETHICS AND DISSEMINATION

The study was reviewed and approved by Ethics Committee of Guangdong Province Hospital of Chinese Medicine at Guangzhou University of Chinese Medicine (ZF2021-144-01) and performed in accordance with Guide for the Care and Use of Laboratory Animals published by the US National Institutes of Health (publication No. 85-23, revised 1996).

COMPETING INTERESTS STATEMENT

1
2
3
4 445 All authors declare that they have no conflict of interest.

5
6 446 **AUTHORS' CONTRIBUTIONS**

7
8 447 YZ & SM drafted this manuscript; GY, JW & FC made statistical analysis; MZZ made
9
10 448 a critical revision of the manuscript and contributed to the rationalization of the study.
11
12 449 All authors read and approved the final manuscript.

13
14 450 **REFERENCE**

For peer review only

Protected by copyright, including for uses related to text and data mining, AI training, and similar technologies.
Erasmus Hogeschool

1. Coursin DB, Skrobik Y. What Is Safe Sedation in the ICU? *New England Journal of Medicine* 2019;380(26):2577-78. doi: 10.1056/NEJMe1906522
2. Subramaniam B, Shankar P, Shaefi S, et al. Effect of Intravenous Acetaminophen vs Placebo Combined With Propofol or Dexmedetomidine on Postoperative Delirium Among Older Patients Following Cardiac Surgery The DEXACET Randomized Clinical Trial. *Jama-Journal of the American Medical Association* 2019;321(7):686-96. doi: 10.1001/jama.2019.0234
3. Shelton KT, Qu J, Bilotta F, et al. Minimizing ICU Neurological Dysfunction with Dexmedetomidine-induced Sleep (MINDDS): protocol for a randomised, double-blind, parallel-arm, placebo-controlled trial. *BMJ Open* 2018;8(4):e020316. doi: 10.1136/bmjopen-2017-020316 [published Online First: 2018/04/22]
4. Zhao L, Li D, Zheng H, et al. Acupuncture as Adjunctive Therapy for Chronic Stable Angina: A Randomized Clinical Trial. *Jama Internal Medicine* 2019;179(10):1388-97. doi: 10.1001/jamainternmed.2019.2407
5. Garcia MK, Meng Z, Rosenthal DI, et al. Effect of True and Sham Acupuncture on Radiation-Induced Xerostomia Among Patients With Head and Neck Cancer: A Randomized Clinical Trial. *Jama Network Open* 2019;2(12):e1916910. doi: 10.1001/jamanetworkopen.2019.16910
6. Pei W, Peng R, Gu Y, et al. Research trends of acupuncture therapy on insomnia in two decades (from 1999 to 2018): a bibliometric analysis. *Bmc Complementary and Alternative Medicine* 2019;19(1):225. doi: 10.1186/s12906-019-2606-5
7. He Y, Guo X, May BH, et al. Clinical Evidence for Association of Acupuncture and Acupressure With Improved Cancer Pain A Systematic Review and Meta-Analysis. *Jama Oncology* 2020;6(2):271-78. doi: 10.1001/jamaoncol.2019.5233
8. Smith CA, Armour M, Zhu X, et al. Acupuncture for dysmenorrhoea. *Cochrane Database of Systematic*

1
2
3
4 472 *Reviews* 2016(4):CD007854. doi: 10.1002/14651858.CD007854.pub3
5
6
7 473 9. Manheimer E, Cheng K, Wieland LS, et al. Acupuncture for hip osteoarthritis. *Cochrane Database of*
8
9
10 474 *Systematic Reviews* 2018(5):CD013010. doi: 10.1002/14651858.Cd013010
11
12 475 10. Dingemann J, Plewig B, Baumann I, et al. Acupuncture in posttonsillectomy pain A prospective, double-
13
14
15 476 blinded, randomized, controlled trial. *Hno* 2017;65:73-79. doi: 10.1007/s00106-016-0290-z
16
17
18 477 11. Wu M-S, Chen K-H, Chen IF, et al. The Efficacy of Acupuncture in Post-Operative Pain Management: A
19
20 478 Systematic Review and Meta-Analysis. *Plos One* 2016;11(3):e0150367. doi:
21
22
23 479 10.1371/journal.pone.0150367
24
25
26 480 12. Li Y, Li Y, Zhang WC, et al. Effects of acupuncture in Siguan points on man-machine counteraction in
27
28
29 481 respiratory failure patients during mechanical ventilation. *Zhongguo Zhong Xi Yi Jie He Za Zhi*
30
31 482 2006;26(10):930-32.
32
33
34 483 13. Tsay SL, Wang JC, Lin KC, et al. Effects of acupressure therapy for patients having prolonged mechanical
35
36
37 484 ventilation support. *J Adv Nurs* 2005;52(2):142-50. doi: 10.1111/j.1365-2648.2005.03576.x [published
38
39 485 Online First: 2005/09/17]
40
41
42 486 14. AminiSaman J, Mohammadi S, Karimpour H, et al. Transcutaneous Electrical Nerve Stimulation at the
43
44
45 487 Acupuncture Points to Relieve Pain of Patients Under Mechanical Ventilation: A Randomized Controlled
46
47
48 488 Study. *J Acupunct Meridian Stud* 2018;11(5):290-95. doi: 10.1016/j.jams.2018.06.008 [published
49
50 489 Online First: 2018/07/24]
51
52
53 490 15. Yuan SC, Huang XI, Hua SY, et al. Effect of acupuncture on diaphragmatic function in patients with AECOPD
54
55
56 491 typeII respiratory failure evaluated by ultrasound detection. *Zhongguo Zhen Jiu* 2021;41(07):703-10.
57
58 492 doi: 10.13703/j.0255-2930.20200606-k0007
59
60

Protected by copyright, including for uses related to text and data mining, AI training, and similar technologies.
Erasmus Hogeschool

16. Irnich D, Behrens N, Molzen H, et al. Randomised trial of acupuncture compared with conventional massage and "sham" laser acupuncture for treatment of chronic neck pain. *BMJ* 2001;322(7302):1574-8. doi: 10.1136/bmj.322.7302.1574 [published Online First: 2001/06/30]
17. Kong JT, Puetz C, Tian L, et al. Effect of Electroacupuncture vs Sham Treatment on Change in Pain Severity Among Adults With Chronic Low Back Pain: A Randomized Clinical Trial. *JAMA Netw Open* 2020;3(10):e2022787. doi: 10.1001/jamanetworkopen.2020.22787 [published Online First: 2020/10/28]
18. MacPherson H, Altman DG, Hammerschlag R, et al. Revised STandards for Reporting Interventions in Clinical Trials of Acupuncture (STRICTA): extending the CONSORT statement. *Acupuncture in Medicine* 2010;28(2):83-93. doi: 10.1136/aim.2009.001370
19. Barr J, Fraser GL, Puntillo K, et al. Clinical Practice Guidelines for the Management of Pain, Agitation, and Delirium in Adult Patients in the Intensive Care Unit. *Critical Care Medicine* 2013;41(1):263-306. doi: 10.1097/CCM.0b013e3182783b72
20. Ely EW, Truman B, Shintani A, et al. Monitoring sedation status over time in ICU patients - Reliability and validity of the Richmond Agitation-Sedation Scale (RASS). *Jama-Journal of the American Medical Association* 2003;289(22):2983-91. doi: 10.1001/jama.289.22.2983
21. Sessler CN, Gosnell MS, Grap MJ, et al. The Richmond Agitation-Sedation Scale - Validity and reliability in adult intensive care unit patients. *American Journal of Respiratory and Critical Care Medicine* 2002;166(10):1338-44. doi: 10.1164/rccm.2107138
22. Payen JF, Bru O, Bosson JL, et al. Assessing pain in critically ill sedated patients by using a behavioral pain scale. *Critical Care Medicine* 2001;29(12):2258-63. doi: 10.1097/00003246-200112000-00004
23. Chanques G, Viel E, Constantin J-M, et al. The measurement of pain in intensive care unit: Comparison of

1
2
3
4 514 5 self-report intensity scales. *Pain* 2010;151(3):711-21. doi: 10.1016/j.pain.2010.08.039
5
6
7 515 24. Girard TD, Kress JP, Fuchs BD, et al. Efficacy and safety of a paired sedation and ventilator weaning
8
9
10 516 protocol for mechanically ventilated patients in intensive care (Awakening and Breathing Controlled
11
12 517 trial): a randomised controlled trial. *Lancet* 2008;371(9607):126-34. doi: 10.1016/s0140-
13
14
15 518 6736(08)60105-1
16
17
18 519 25. Subira C, Hernandez G, Vazquez A, et al. Effect of Pressure Support vs T-Piece Ventilation Strategies
19
20 520 During Spontaneous Breathing Trials on Successful Extubation Among Patients Receiving Mechanical
21
22
23 521 Ventilation A Randomized Clinical Trial. *Jama-Journal of the American Medical Association*
24
25
26 522 2019;321(22):2175-82. doi: 10.1001/jama.2019.7234
27
28
29 523 26. Hui D, Frisbee-Hume S, Wilson A, et al. Effect of Lorazepam With Haloperidol vs Haloperidol Alone on
30
31 524 Agitated Delirium in Patients With Advanced Cancer Receiving Palliative Care A Randomized Clinical
32
33
34 525 Trial. *Jama-Journal of the American Medical Association* 2017;318(11):1047-56. doi:
35
36
37 526 10.1001/jama.2017.11468
38
39 527 27. Carrasco G, Molina R, Costa J, et al. Propofol vs midazolam in short-, medium-, and long-term sedation of
40
41
42 528 critically ill patients. A cost-benefit analysis. *Chest* 1993;103(2):557-64. doi: 10.1378/chest.103.2.557
43
44
45 529 28. Liu L, Wu A-P, Yang Y, et al. Effects of Propofol on Respiratory Drive and Patient-ventilator Synchrony
46
47
48 530 during Pressure Support Ventilation in Postoperative Patients: A Prospective Study. *Chinese Medical*
49
50 531 *Journal* 2017;130(10):1155-60. doi: 10.4103/0366-6999.205864
51
52
53 532 29. Kollef MH, Levy NT, Ahrens TS, et al. The use of continuous IV sedation is associated with prolongation of
54
55
56 533 mechanical ventilation. *Chest* 1998;114(2):541-48. doi: 10.1378/chest.114.2.541
57
58
59 534 30. Ouimet S, Kavanagh BP, Gottfried S, et al. Incidence, risk factors and consequences of ICU delirium.
60

Protected by copyright, including for uses related to text and data mining, AI training, and similar technologies.
ErasmusHogeschool

- Intensive Care Medicine* 2007;33(1):66-73. doi: 10.1007/s00134-006-0399-8
31. Chanques G, Conseil M, Roger C, et al. Immediate interruption of sedation compared with usual sedation care in critically ill postoperative patients (SOS-Ventilation): a randomised, parallel-group clinical trial. *Lancet Respiratory Medicine* 2017;5(10):795-805. doi: 10.1016/s2213-2600(17)30304-1
32. Mehta S, Burry L, Cook D, et al. Daily Sedation Interruption in Mechanically Ventilated Critically Ill Patients Cared for With a Sedation Protocol A Randomized Controlled Trial. *Jama-Journal of the American Medical Association* 2012;308(19):1985-92. doi: 10.1001/jama.2012.13872
33. Asmussen S, Przkora R, Maybauer DM, et al. Meta-Analysis of Electroacupuncture in Cardiac Anesthesia and Intensive Care. *Journal of Intensive Care Medicine* 2019;34(8):652-61. doi: 10.1177/0885066617708558
34. Harris RE, Zubieta J-K, Scott DJ, et al. Traditional Chinese acupuncture and placebo (sham) acupuncture are differentiated by their effects on mu-opioid receptors (MORs). *Neuroimage* 2009;47(3):1077-85. doi: 10.1016/j.neuroimage.2009.05.083
35. Han JS. Acupuncture: neuropeptide release produced by electrical stimulation of different frequencies. *Trends in Neurosciences* 2003;26(1):17-22. doi: 10.1016/s0166-2236(02)00006-1
36. Wang B, Tang J, White PF, et al. Effect of the intensity of transcutaneous acupoint electrical stimulation on the postoperative analgesic requirement. *Anesth Analg* 1997;85(2):406-13. doi: 10.1097/00000539-199708000-00029 [published Online First: 1997/08/01]
37. Usichenko TI, Dinse M, Hermsen M, et al. Auricular acupuncture for pain relief after total hip arthroplasty - a randomized controlled study. *Pain* 2005;114(3):320-27. doi: 10.1016/j.pain.2004.08.021 [published Online First: 2005/03/22]

1
2
3
4 556 38. White P, Lewith G, Prescott P, et al. Acupuncture versus placebo for the treatment of chronic mechanical
5
6
7 557 neck pain: a randomized, controlled trial. *Ann Intern Med* 2004;141(12):911-19. doi: 10.7326/0003-
8
9 558 4819-141-12-200412210-00007 [published Online First: 2004/12/22]
10
11
12 559 39. Gaubeca-Gilarranz A, Fernandez-de-Las-Penas C, Medina-Torres JR, et al. Effectiveness of dry needling
13
14
15 560 of rectus abdominis trigger points for the treatment of primary dysmenorrhoea: a randomised parallel-
16
17
18 561 group trial. *Acupunct Med* 2018;36(5):302-10. doi: 10.1136/acupmed-2017-011566 [published Online
19
20 562 First: 2018/05/04]
21
22
23 563 40. Kennedy S, Baxter GD, Kerr DP, et al. Acupuncture for acute non-specific low back pain: a pilot randomised
24
25
26 564 non-penetrating sham controlled trial. *Complement Ther Med* 2008;16(3):139-46. doi:
27
28 565 10.1016/j.ctim.2007.03.001 [published Online First: 2008/06/07]
29
30
31 566 41. Lv Y, He H, Xie J, et al. Effects of transcutaneous acupoint electrical stimulation combined with low-dose
32
33
34 567 sufentanil pretreatment on the incidence and severity of etomidate-induced myoclonus: A randomized
35
36
37 568 controlled trial. *Medicine (Baltimore)* 2018;97(23):e10969. doi: 10.1097/MD.00000000000010969
38
39 569 [published Online First: 2018/06/08]
40
41
42 570 42. Ma W, Bai W, Lin C, et al. Effects of Sanyinjiao (SP6) with electroacupuncture on labour pain in women
43
44
45 571 during labour. *Complement Ther Med* 2011;19 Suppl 1:S13-8. doi: 10.1016/j.ctim.2010.09.001
46
47 572 [published Online First: 2011/01/05]
48
49
50 573 43. Mavrommatis CI, Argyra E, Vadalouka A, et al. Acupuncture as an adjunctive therapy to pharmacological
51
52
53 574 treatment in patients with chronic pain due to osteoarthritis of the knee: a 3-armed, randomized,
54
55
56 575 placebo-controlled trial. *Pain* 2012;153(8):1720-26. doi: 10.1016/j.pain.2012.05.005 [published Online
57
58 576 First: 2012/06/26]
59
60

Protected by copyright, including for uses related to text and data mining, AI training, and similar technologies.
Erasmus Hogeschool

44. Ng SSM, Leung WW, Mak TWC, et al. Electroacupuncture reduces duration of postoperative ileus after laparoscopic surgery for colorectal cancer. *Gastroenterology* 2013;144(2):307-13 e1. doi: 10.1053/j.gastro.2012.10.050 [published Online First: 2012/11/13]
45. Sui M, Jiang N, Yan L, et al. Effect of Electroacupuncture on Shoulder Subluxation in Poststroke Patients with Hemiplegic Shoulder Pain: A Sham-Controlled Study Using Multidimensional Musculoskeletal Ultrasound Assessment. *Pain Res Manag* 2021;2021:5329881. doi: 10.1155/2021/5329881 [published Online First: 2021/11/30]
46. Tabassi KT, Amini P, Mohammadi S, et al. The effect of acupuncture on pain score after open kidney surgery. *J Complement Integr Med* 2015;12(3):241-44. doi: 10.1515/jcim-2014-0071 [published Online First: 2015/04/30]
47. Wang X, Yin X, Guo XT, et al. Effects of the pestle needle therapy, a type of acupoint stimulation, on post-hemorrhoidectomy pain: A randomized controlled trial. *J Integr Med* 2020;18(6):492-98. doi: 10.1016/j.joim.2020.08.001 [published Online First: 2020/08/17]
48. Wong RH, Lee TW, Sihoe AD, et al. Analgesic effect of electroacupuncture in postthoracotomy pain: a prospective randomized trial. *Ann Thorac Surg* 2006;81(6):2031-6. doi: 10.1016/j.athoracsur.2005.12.064 [published Online First: 2006/05/30]
49. Yu X, Zhang F, Chen B. The effect of TEAS on the quality of early recovery in patients undergoing gynecological laparoscopic surgery: a prospective, randomized, placebo-controlled trial. *Trials* 2020;21(1):43. doi: 10.1186/s13063-019-3892-4 [published Online First: 2020/01/10]
50. Zheng LH, Sun H, Wang GN, et al. Effect of transcutaneous electrical acupoint stimulation on nausea and vomiting induced by patient controlled intravenous analgesia with tramadol. *Chin J Integr Med*

1
2
3
4 598 2008;14(1):61-4. doi: 10.1007/s11655-007-9006
5
6
7 599 10.1007/s11655-007-9006-2 [published Online First: 2008/01/26]
8
9
10 600 51. Chen J, Zhang Y, Li X, et al. Efficacy of transcutaneous electrical acupoint stimulation combined with general
11
12 601 anesthesia for sedation and postoperative analgesia in minimally invasive lung cancer surgery: A
13
14
15 602 randomized, double-blind, placebo-controlled trial. *Thorac Cancer* 2020;11(4):928-34. doi:
16
17
18 603 10.1111/1759-7714.13343 [published Online First: 2020/02/18]
19
20 604 52. Fleckenstein J, Baeumler P, Gurschler C, et al. Acupuncture reduces the time from extubation to 'ready for
21
22
23 605 discharge' from the post anaesthesia care unit: results from the randomised controlled AcuARP trial.
24
25
26 606 *Sci Rep* 2018;8(1):15734. doi: 10.1038/s41598-018-33459-y [published Online First: 2018/10/26]
27
28
29 607 53. Cabrini L, Gioia L, Gemma M, et al. Bispectral index evaluation of the sedative effect of acupuncture in
30
31 608 healthy volunteers. *J Clin Monit Comput* 2006;20(5):311-5. doi: 10.1007/s10877-006-9026-z [published
32
33
34 609 Online First: 2006/09/22]
35
36
37 610 54. Zheng X, Meng JB, Fang Q. Electroacupuncture reduces the dose of midazolam monitored by the bispectral
38
39 611 index in critically ill patients with mechanical ventilation: an exploratory study. *Acupunct Med*
40
41
42 612 2012;30(2):78-84. doi: 10.1136/acupmed-2011-010095 [published Online First: 2012/03/31]
43
44
45 613 55. Feng X, Li J, Wu L, et al. Effect of combined electroacupuncture and epidural anesthesia in gynecological
46
47
48 614 operation evaluated by bispectral index. *Zhongguo Zhong Xi Yi Jie He Za Zhi* 2010;30(02):150-
49
50 615 52.(Chinese).
51
52
53 616 56. Zheng X, Wan L, Gao F, et al. Effect of ear point embedding on plasma and effect site concentrations of
54
55
56 617 propofol-remifentanil in elderly patients after target-controlled induction. *Zhongguo Zhen Jiu*
57
58 618 2017;37(08):869-73. Chinese. doi: 10.13703/j.0255-2930.2017.08.017
59
60

Protected by copyright, including for uses related to text and data mining, AI training, and similar technologies.
Erasmus Hogeschool

57. Lee KC, Chao YC, Lin YP, et al. Effectiveness of Self-administered Acupressure for Family Caregivers of Advanced Cancer Patients With Insomnia: A Randomized Controlled Trial. *Cancer Nurs* 2022;45(1):E1-E9. doi: 10.1097/NCC.0000000000000870 [published Online First: 2020/08/03]
58. Chen QQ, Wei QL, Zhang XH. Effects of electroacupuncture on supplementary analgesia and improvement of adverse reactions induced by dolantin in oocyte retrieval. *Zhongguo Zhen Jiu* 2012;32(12):1113-16.
59. Xiao J, Yi W, Wu L. Effects of electroacupuncture on reducing labor pain and complications in the labor analgesia process of combined spinal-epidural analgesia with patient-controlled epidural analgesia. *Arch Gynecol Obstet* 2019;299(1):123-28. doi: 10.1007/s00404-018-4955-6 [published Online First: 2018/11/15]
60. Chen TY, Zhou J, Wang K, et al. Electroacupuncture Intervention Combined with Anesthetics for Analgesia and Post-surgical Gastrointestinal Recovery in Pneumectomy Patients. *Zhen Ci Yan Jiu* 2019;40(6):461-64.
61. Meldrum ML. A brief history of the randomized controlled trial - From oranges and lemons to the gold standard. *Hematology-Oncology Clinics of North America* 2000;14(4):745-60. doi: 10.1016/s0889-8588(05)70309-9
62. Boutron I, Guittet L, Estellat C, et al. Reporting methods of blinding in randomized trials assessing nonpharmacological treatments. *Plos Medicine* 2007;4(2):370-80. doi: 10.1371/journal.pmed.0040061
63. Chen Z-x, Li Y, Zhang X-g, et al. Sham Electroacupuncture Methods in Randomized Controlled Trials. *Scientific Reports* 2017;7:40837. doi: 10.1038/srep40837
64. Lund I, Lundeberg T. Are minimal, superficial or sham acupuncture procedures acceptable as inert placebo controls? *Acupuncture in medicine : journal of the British Medical Acupuncture Society* 2006;24(1):13-

1
2
3
4 640
5
6
7 641
8
9
10 642
11
12 643
13
14
15 644
16
17
18 645
19
20 646
21
22
23
24 647
25
26
27
28
29
30
31
32
33
34
35
36
37
38
39
40
41
42
43
44
45
46
47
48
49
50
51
52
53
54
55
56
57
58
59
60

5.

65. Lundeberg T, Lund I, Naslund J, et al. The Emperor's sham - wrong assumption that sham needling is sham. *Acupuncture in Medicine* 2008;26(4):239-42. doi: 10.1136/aim.26.4.239

66. Kim T-H, Lee MS, Alraek T, et al. Acupuncture in sham device controlled trials may not be as effective as acupuncture in the real world: a preliminary network meta-analysis of studies of acupuncture for hot flashes in menopausal women. *Acupuncture in Medicine* 2020;38(1):37-44. doi: 10.1136/acupmed-2018-011671

Protected by copyright, including for uses related to text and data mining, AI training, and similar technologies.
Erasmus Hogeschool

Table 1. Inclusion and exclusion criteria

A. Inclusion criteria	B. Exclusion criteria
1. Aged 18 years or over and under 80 years;	1. Skin lesions near the acupuncture points;
2. Required mechanical ventilation >24 hours;	2. Coagulopathy (bleeding time >4 min, thrombocytes <50,000/ μ l);
3. Continuous intravenous administration of sedative and analgesic medications;	3. Hypohepatia with Childs-Pugh class B or C;
4. Willingness to provide informed consent prior to enrollment;	4. Second- or third-degree atrioventricular block;
5. Be able to comply with all follow-up evaluations (in investigator's opinion).	5. Severe dementia;
	6. Psychiatric disorder;
	7. Neurological disease;
	8. Active seizures;
	9. Alcohol or drug abuse;
	10. Benzodiazepine dependency;
	11. Moribund state with the planned withdrawal of life support;
	12. Family or physician refusal;
	13. Pregnancy or lactation;
	14. Currently participated in any other investigational therapeutic or device trial.

1
2
3
4
5
6
7
8
9
10
11
12
13
14
15
16
17
18
19
20
21
22
23
24
25
26
27
28
29
30
31
32
33
34
35
36
37
38
39
40
41
42
43
44
45
46
47
48
49
50
51
52
53
54
55
56
57
58
59
60

Figure legend:

Figure 1. Trial design of PASSION study

Figure 2. Illustration of the sham points

Figure 3. Forest plot of AC group versus NAC group.

Figure 4. Forest plot of AC group versus NAC group.

For peer review only

Protected by copyright, including for uses related to text and data mining, AI training, and similar technologies.
Erasmus Hogeschool

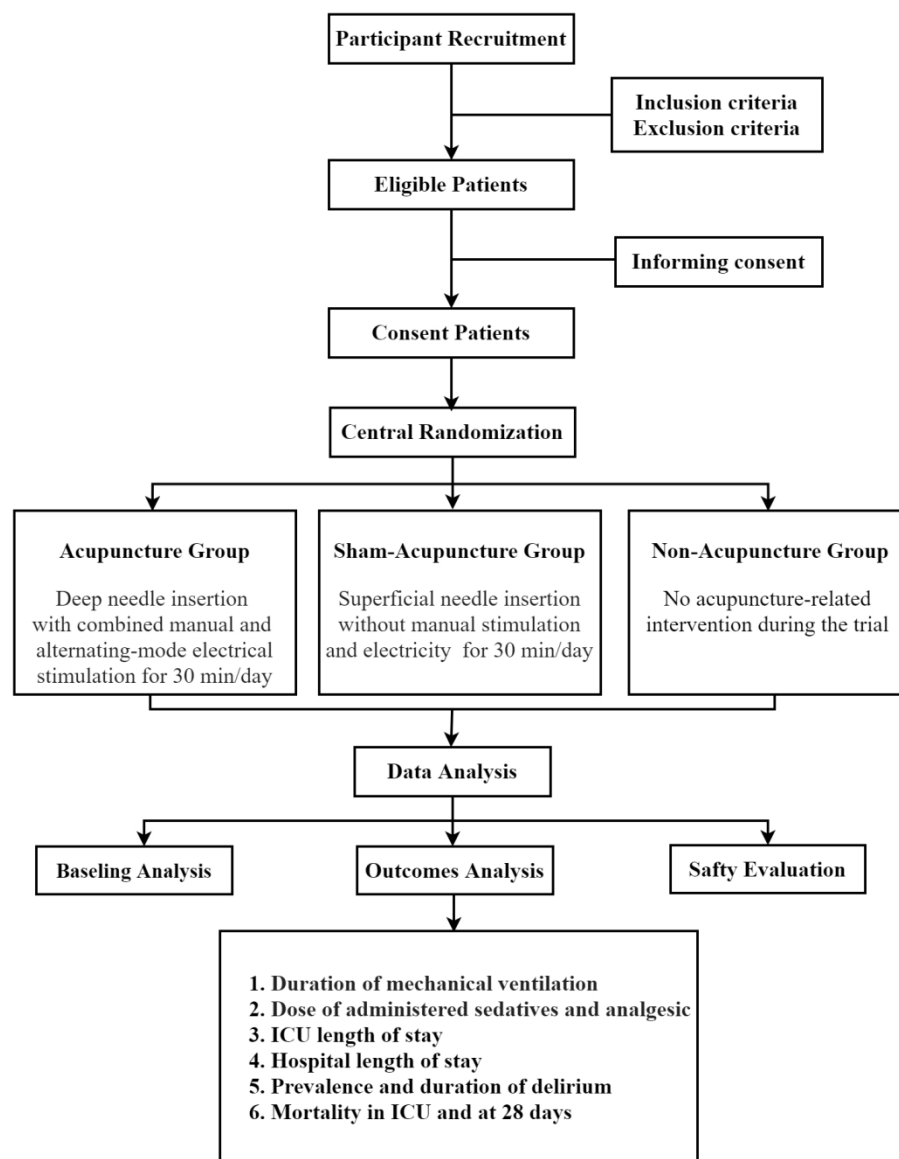


Figure1

543x691mm (72 x 72 DPI)

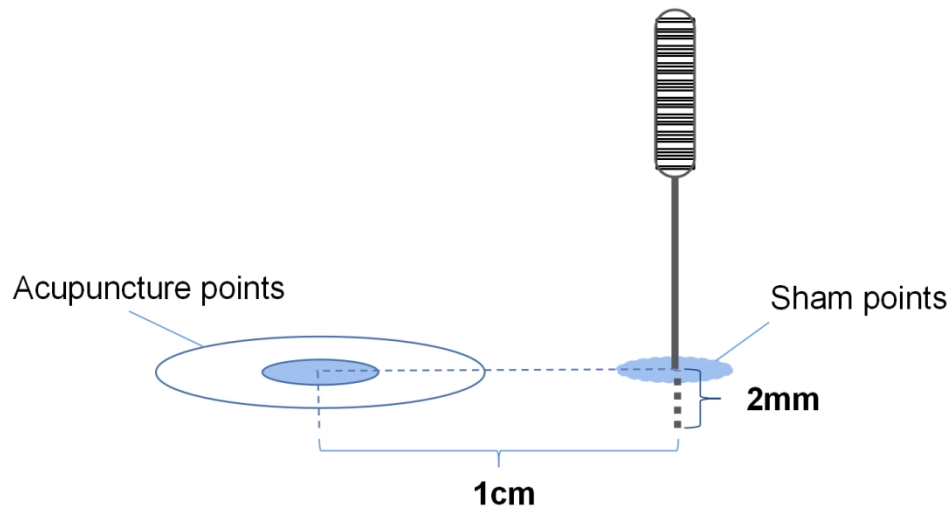


Figure2

1005x559mm (38 x 38 DPI)

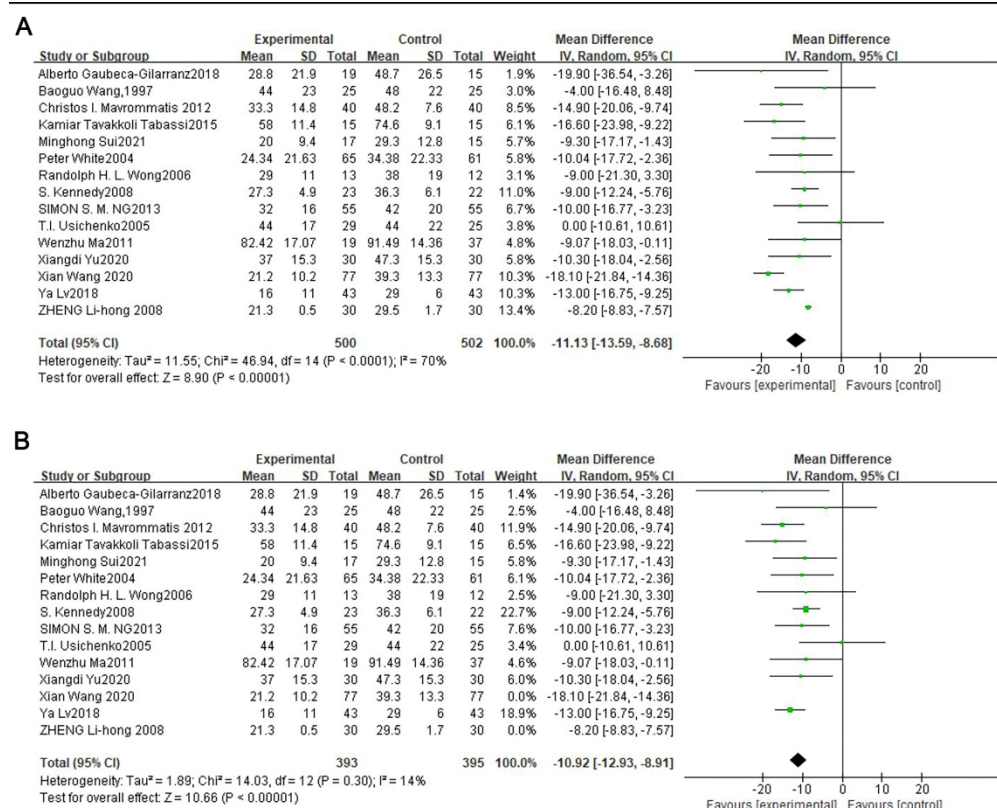


Figure3

199x162mm (300 x 300 DPI)

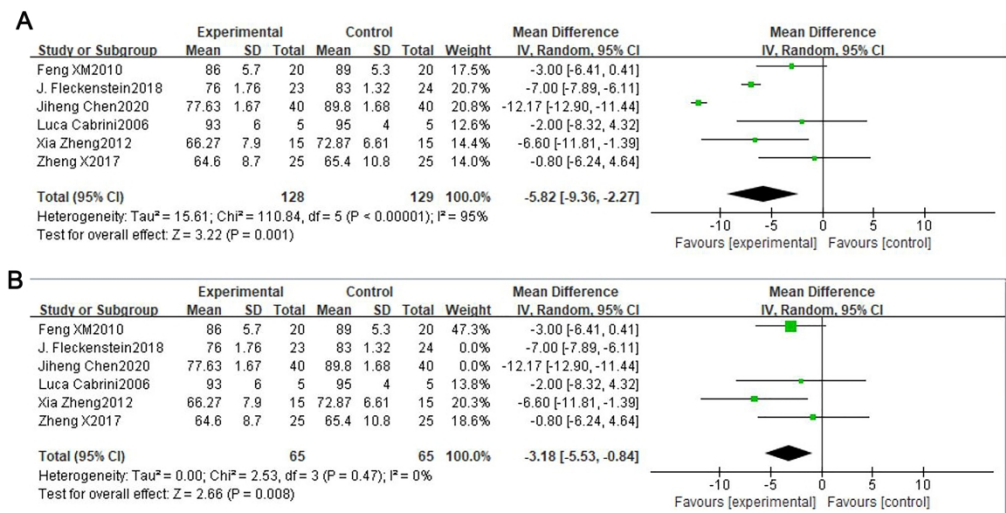


Figure4

199x101mm (300 x 300 DPI)

Reporting checklist for protocol of a clinical trial.

Based on the SPIRIT guidelines.

Instructions to authors

Complete this checklist by entering the page numbers from your manuscript where readers will find each of the items listed below.

Your article may not currently address all the items on the checklist. Please modify your text to include the missing information. If you are certain that an item does not apply, please write "n/a" and provide a short explanation.

Upload your completed checklist as an extra file when you submit to a journal.

In your methods section, say that you used the SPIRIT reporting guidelines, and cite them as:

Chan A-W, Tetzlaff JM, Gøtzsche PC, Altman DG, Mann H, Berlin J, Dickersin K, Hróbjartsson A, Schulz KF, Parulekar WR, Krleža-Jerić K, Laupacis A, Moher D. SPIRIT 2013 Explanation and Elaboration: Guidance for protocols of clinical trials. BMJ. 2013;346:e7586

Reporting Item			Page Number
Administrative information			
Title	#1	Descriptive title identifying the study design, population, interventions, and, if applicable, trial acronym	Page 1, line 1-4.
Trial registration	#2a	Trial identifier and registry name. If not yet registered, name of intended registry	Page 3, line 58; Page 7, line 130.
Trial registration: data set	#2b	All items from the World Health Organization Trial Registration Data Set	n/a
Protocol version	#3	Date and version identifier	n/a
Funding	#4	Sources and types of financial, material, and other support	Page 18, line 427-434.

1	Roles and	#5a	Names, affiliations, and roles of protocol contributors	Page 1;
2	responsibilities:			
3	contributorship			Page 18-
4				19, line
5				444-449.
6				
7				
8	Roles and	#5b	Name and contact information for the trial sponsor	Page 18,
9	responsibilities:			line 427-
10	sponsor contact			434.
11	information			
12				
13	Roles and	#5c	Role of study sponsor and funders, if any, in study	Page 18,
14	responsibilities:		design; collection, management, analysis, and	line 435-
15	sponsor and funder		interpretation of data; writing of the report; and the	438.
16			decision to submit the report for publication, including	
17			whether they will have ultimate authority over any of	
18			these activities	
19				
20				
21				
22				
23				
24				
25	Roles and	#5d	Composition, roles, and responsibilities of the	Page 13,
26	responsibilities:		coordinating centre, steering committee, endpoint	line 290-
27	committees		adjudication committee, data management team, and	292.
28			other individuals or groups overseeing the trial, if	
29			applicable (see Item 21a for data monitoring committee)	
30				
31				
32				
33	Introduction			
34				
35				
36	Background and	#6a	Description of research question and justification for	Page 5,
37	rationale		undertaking the trial, including summary of relevant	line 77-
38			studies (published and unpublished) examining benefits	100.
39			and harms for each intervention	
40				
41				
42				
43	Background and	#6b	Explanation for choice of comparators	Page 6,
44	rationale: choice of			line 106-
45	comparators			107.
46				
47				
48	Objectives	#7	Specific objectives or hypotheses	Page 6,
49				line 103-
50				107.
51				
52				
53	Trial design	#8	Description of trial design including type of trial (eg,	Page 5-6,
54			parallel group, crossover, factorial, single group),	line 101-
55			allocation ratio, and framework (eg, superiority,	103.
56			equivalence, non-inferiority, exploratory)	
57				
58				
59				
60				

Methods:

Participants, interventions, and outcomes

Study setting	#9	Description of study settings (eg, community clinic, academic hospital) and list of countries where data will be collected. Reference to where list of study sites can be obtained	Page 6, line 112-113.
Eligibility criteria	#10	Inclusion and exclusion criteria for participants. If applicable, eligibility criteria for study centres and individuals who will perform the interventions (eg, surgeons, psychotherapists)	Page 7-8, line 144-157. Page 8, line 159-164; Page 10, line 210-213;
Interventions: description	#11a	Interventions for each group with sufficient detail to allow replication, including how and when they will be administered	Page 9-10, line 188-213;
Interventions: modifications	#11b	Criteria for discontinuing or modifying allocated interventions for a given trial participant (eg, drug dose change in response to harms, participant request, or improving / worsening disease)	Page 13, line 286-290;
Interventions: adherence	#11c	Strategies to improve adherence to intervention protocols, and any procedures for monitoring adherence (eg, drug tablet return; laboratory tests)	Page 8, line 207-209.
Interventions: concomitant care	#11d	Relevant concomitant care and interventions that are permitted or prohibited during the trial	n/a

1	Outcomes	#12	Primary, secondary, and other outcomes, including the	Page 13,
2			specific measurement variable (eg, systolic blood	line 294-
3			pressure), analysis metric (eg, change from baseline,	302;
4			final value, time to event), method of aggregation (eg,	
5			median, proportion), and time point for each outcome.	
6			Explanation of the clinical relevance of chosen efficacy	
7			and harm outcomes is strongly recommended	
8				
9				
10				
11				
12	Participant timeline	#13	Time schedule of enrolment, interventions (including any	Page 9,
13			run-ins and washouts), assessments, and visits for	line183-
14			participants. A schematic diagram is highly	187.
15			recommended (see Figure)	
16				
17				
18				
19				
20	Sample size	#14	Estimated number of participants needed to achieve	Page 14,
21			study objectives and how it was determined, including	line 325-
22			clinical and statistical assumptions supporting any	331;
23			sample size calculations	
24				
25				
26				
27	Recruitment	#15	Strategies for achieving adequate participant enrolment	Page 14,
28			to reach target sample size	line 330-
29				331.
30				
31				
32				
33				
34				
35	Methods:			
36	Assignment of			
37	interventions (for			
38	controlled trials)			
39				
40				
41				
42	Allocation: sequence	#16a	Method of generating the allocation sequence (eg,	Page 8,
43	generation		computer-generated random numbers), and list of any	line 166-
44			factors for stratification. To reduce predictability of a	175.
45			random sequence, details of any planned restriction (eg,	
46			blocking) should be provided in a separate document	
47			that is unavailable to those who enrol participants or	
48			assign interventions	
49				
50				
51				
52				
53	Allocation	#16b	Mechanism of implementing the allocation sequence (eg,	Page 8,
54	concealment		central telephone; sequentially numbered, opaque,	line 166-
55	mechanism		sealed envelopes), describing any steps to conceal the	175.
56			sequence until interventions are assigned	
57				
58				
59				
60				

Allocation: implementation	#16c	Who will generate the allocation sequence, who will enrol participants, and who will assign participants to interventions	Page 8, line 169-175.
Blinding (masking)	#17a	Who will be blinded after assignment to interventions (eg, trial participants, care providers, outcome assessors, data analysts), and how	Page 8, line 179-181.
Blinding (masking): emergency unblinding	#17b	If blinded, circumstances under which unblinding is permissible, and procedure for revealing a participant's allocated intervention during the trial	Page 13, line 286-290.
Methods: Data collection, management, and analysis			
Data collection plan	#18a	Plans for assessment and collection of outcome, baseline, and other trial data, including any related processes to promote data quality (eg, duplicate measurements, training of assessors) and a description of study instruments (eg, questionnaires, laboratory tests) along with their reliability and validity, if known. Reference to where data collection forms can be found, if not in the protocol	Page 13-14, line 309-320.
Data collection plan: retention	#18b	Plans to promote participant retention and complete follow-up, including list of any outcome data to be collected for participants who discontinue or deviate from intervention protocols	Page 10, line 207-209.
Data management	#19	Plans for data entry, coding, security, and storage, including any related processes to promote data quality (eg, double data entry; range checks for data values). Reference to where details of data management procedures can be found, if not in the protocol	Page 14, line 320
Statistics: outcomes	#20a	Statistical methods for analysing primary and secondary outcomes. Reference to where other details of the	Page 14-15, line

Page 41 of 43		BMJ Open	
		statistical analysis plan can be found, if not in the protocol	332-349.
Statistics: additional analyses	#20b	Methods for any additional analyses (eg, subgroup and adjusted analyses)	Page14, line 337-338.
Statistics: analysis population and missing data	#20c	Definition of analysis population relating to protocol non-adherence (eg, as randomised analysis), and any statistical methods to handle missing data (eg, multiple imputation)	Page14, line 337-338.
Methods: Monitoring			
Data monitoring: formal committee	#21a	Composition of data monitoring committee (DMC); summary of its role and reporting structure; statement of whether it is independent from the sponsor and competing interests; and reference to where further details about its charter can be found, if not in the protocol. Alternatively, an explanation of why a DMC is not needed	Page13, line 290-292.
Data monitoring: interim analysis	#21b	Description of any interim analyses and stopping guidelines, including who will have access to these interim results and make the final decision to terminate the trial	n/a
Harms	#22	Plans for collecting, assessing, reporting, and managing solicited and spontaneously reported adverse events and other unintended effects of trial interventions or trial conduct	Page12, line 286-292.
Auditing	#23	Frequency and procedures for auditing trial conduct, if any, and whether the process will be independent from investigators and the sponsor	n/a
Ethics and dissemination			
Research ethics approval	#24	Plans for seeking research ethics committee / institutional review board (REC / IRB) approval	Page 6-7, line127-129.

Protocol amendments	#25	Plans for communicating important protocol modifications (eg, changes to eligibility criteria, outcomes, analyses) to relevant parties (eg, investigators, REC / IRBs, trial participants, trial registries, journals, regulators)	n/a
Consent or assent	#26a	Who will obtain informed consent or assent from potential trial participants or authorised surrogates, and how (see Item 32)	Page 7, line 135-137.
Consent or assent: ancillary studies	#26b	Additional consent provisions for collection and use of participant data and biological specimens in ancillary studies, if applicable	n/a
Confidentiality	#27	How personal information about potential and enrolled participants will be collected, shared, and maintained in order to protect confidentiality before, during, and after the trial	Page 13-14, line 309-320.
Declaration of interests	#28	Financial and other competing interests for principal investigators for the overall trial and each study site	n/a
Data access	#29	Statement of who will have access to the final trial dataset, and disclosure of contractual agreements that limit such access for investigators	n/a
Ancillary and post trial care	#30	Provisions, if any, for ancillary and post-trial care, and for compensation to those who suffer harm from trial participation	n/a
Dissemination policy: trial results	#31a	Plans for investigators and sponsor to communicate trial results to participants, healthcare professionals, the public, and other relevant groups (eg, via publication, reporting in results databases, or other data sharing arrangements), including any publication restrictions	n/a
Dissemination policy: authorship	#31b	Authorship eligibility guidelines and any intended use of professional writers	n/a
Dissemination policy: reproducible research	#31c	Plans, if any, for granting public access to the full protocol, participant-level dataset, and statistical code	n/a

Appendices

1	Informed consent	#32	Model consent form and other related documentation	n/a
2	materials		given to participants and authorised surrogates	
3				
4				
5	Biological specimens	#33	Plans for collection, laboratory evaluation, and storage of	n/a
6			biological specimens for genetic or molecular analysis in	
7			the current trial and for future use in ancillary studies, if	
8			applicable	
9				
10				

11 None The SPIRIT Explanation and Elaboration paper is distributed under the terms of the Creative
12 Commons Attribution License CC-BY-NC. This checklist can be completed online using
13 <https://www.goodreports.org/>, a tool made by the [EQUATOR Network](#) in collaboration with
14 [Penelope.ai](#)
15
16
17
18
19
20
21
22
23
24
25
26
27
28
29
30
31
32
33
34
35
36
37
38
39
40
41
42
43
44
45
46
47
48
49
50
51
52
53
54
55
56
57
58
59
60

BMJ Open

Prospective comparison of acupuncture with sham acupuncture to determine impact on sedation and analgesia in mechanically ventilated critically ill patients (PASSION study): protocol for a randomized controlled trial

Journal:	<i>BMJ Open</i>
Manuscript ID	bmjopen-2021-059741.R2
Article Type:	Protocol
Date Submitted by the Author:	12-Aug-2022
Complete List of Authors:	Zhang, Yuzhuo; Guangzhou University of Chinese Medicine Yang, Guang; Guangzhou University of Chinese Medicine Wei, Jinyi; Guangzhou University of Chinese Medicine Chen, Fangliang; Guangzhou University of Chinese Medicine Zhang, Min-Zhou; Guangzhou University of Chinese Medicine Mao, Shuai; Guangzhou University of Chinese Medicine; Guangdong Provincial Hospital of Chinese Medicine, Department of Critical Care Medicine
Primary Subject Heading:	Intensive care
Secondary Subject Heading:	Complementary medicine
Keywords:	Adult intensive & critical care < ANAESTHETICS, Adult anaesthesia < ANAESTHETICS, Pain management < ANAESTHETICS

SCHOLARONE™
Manuscripts

1
2
3
4
5 1 **Prospective comparison of acupuncture with sham acupuncture to**
6
7 2 **determine impact on sedation and analgesia in mechanically ventilated**
8
9
10 3 **critically ill patients (PASSION study): Protocol for a randomized**
11
12
13 4 **controlled trial**

15 5 Yuzhuo Zhang, Ph.D. ^{1*}
16
17
18 6 Guang Yang, M.D. ^{1,2*}
19
20 7 Jinyi Wei, M.D. ¹
21
22 8 Fangliang Chen, M.D. ¹
23
24
25 9 Minzhou Zhang, M.D. ^{1,2,3Δ}
26
27
28
29 10 Shuai Mao, M.D. ^{1,2,3Δ}
30
31

32 11 ¹ *Second Clinical College, Guangzhou University of Chinese Medicine, Guangzhou*
33 12 *510405, China*
34
35 13 ² *Department of Critical Care Medicine, Guangdong Provincial Hospital of Chinese*
36 14 *Medicine, Guangzhou 510120, China*
37
38 15 ³ *Guangdong Provincial Branch of National Clinical Research Centre for Chinese*
39 16 *Medicine Cardiology, Guangzhou 510120, China*
40
41
42 17

43
44 18 *The first two authors contribute equally to this article.

45
46 19 ΔCorrespondence to:
47
48 20 Prof. Shuai MAO
49
50 21 Department of Critical Care Medicine,
51 22 Guangdong Provincial Hospital of Chinese Medicine,
52 23 Guangzhou 510120, China
53
54 24 Phone: 86-20-81887233
55
56 25 Fax: 86-20-81867705
57
58 26 E-mail: maoshuai@gzucm.edu.cn
59 27 Or Prof. Minzhou Zhang minzhouzhang@gzucm.edu.cn
60

ABSTRACT

Introduction Sedation and analgesia are recommended to be employed in the intensive care unit (ICU) to enhance patient comfort and safety, facilitate mechanical ventilation, and reduce oxygen demands. However, the increasing evidence demonstrates that excessive sedation and analgesia might prolong mechanical ventilation and increase costs and mortality. Acupuncture is known to be able to attenuate pain, anxiety, and agitation symptoms while avoiding excessive sedation and analgesia caused by drugs. Therefore, we present a protocol to investigate whether acupuncture, used for sedation and analgesia, can reduce the duration of mechanical ventilation, save medical resources, and reduce the mortality of critically ill patients receiving mechanical ventilation.

Methods and analysis Prospective, randomized controlled trial (RCT) is conducted on 180 adult medical/surgical ICU patients with mechanical ventilation needing sedation at 3 ICUs between 03 November 2021 and 16 August 2023. Patients will be treated with analgesia and sedation to achieve desired target sedation levels (Richmond Agitation Sedation Score of -2 to 1). Enrolled patients will be randomly assigned in a ratio of 1:1:1 to receive deep needle insertion with combined manual and alternating-mode electrical stimulation on acupoints (AC group), superficial needle insertion without manual stimulation and electrical stimulation on non-acupoints (SAC group), or no acupuncture intervention (NAC group).

The primary outcome is the duration of mechanical ventilation from randomization until patients are free of mechanical ventilation (including noninvasive) without reinstitution for the following 48 hours. Secondary endpoints include the dose of administered sedatives and analgesic at comparable sedation levels throughout the study, ICU length of stay, hospital length of stay. Additional outcomes include the prevalence and days of delirium in ICU, mortality in ICU and within 28 days after randomization, and the number of ventilator free days in 28 days.

1

2

3

4 54 **Ethics and dissemination** This trial was approved by the ethics committee at

5

6 55 Guangdong Provincial Hospital of Chinese Medicine. We will publish the study results.

7

8 56 **Trial Registration numbers: ChiCTR2100052650**

9

10

11 57 **Keywords:**

12

13

14 58 acupuncture; sedation; analgesia; critically ill patients; nonpharmacological therapy

15

16 59 **Word Count: 3815**

17

18 60

19

20

21

22

23

24

25

26

27

28

29

30

31

32

33

34

35

36

37

38

39

40

41

42

43

44

45

46

47

48

49

50

51

52

53

54

55

56

57

58

59

60

Strengths and limitations of this study

- This study is an RCT to investigate both the sedative and analgesic effects of acupuncture on critically ill patients needing mechanical ventilation in ICU.
- This study provides a sedative and analgesic strategy for mechanically ventilated critically ill patients with less side effects.
- The primary endpoint is the duration of mechanical ventilation from randomization until patients are free of mechanical ventilation (including noninvasive) without reinstitution for the following 48 hours.
- Secondary endpoints include the dose of administered sedatives and analgesics at comparable sedation levels throughout the study, ICU length of stay, and hospital length of stay.
- Limitations are the non-blinded interventions due to the nature of acupuncture.

1
2
3
4
5
6
7
8
9
10
11
12
13
14
15
16
17
18
19
20
21
22
23
24
25
26
27
28
29
30
31
32
33
34
35
36
37
38
39
40
41
42
43
44
45
46
47
48
49
50
51
52
53
54
55
56
57
58
59
60

73 **INTRODUCTION**

74 Sedative and analgesic medications are routinely administered to mechanically
75 ventilated critically ill patients to reduce pain, anxiety, and agitation, as well as to allow
76 patients to tolerate invasive procedures in the intensive care unit (ICU).¹ Opiates are
77 most commonly used analgesics, while benzodiazepines, propofol, or dexmedetomidine
78 are typically used to prevent or reduce anxiety and agitation.² However, overuse of these
79 medications is associated with worsened clinical outcomes, such as prolonged
80 mechanical ventilation and hospital length of stay, increased risk of altered mental status,
81 and even higher mortality.³ Thus, reducing the unnecessary dosage of sedative and
82 analgesic medications, as well as their side effects while providing desired sedation has
83 always been a key objective when caring for critically ill patients.

84 As a therapeutic modality with fewer adverse effects, acupuncture has been used in
85 China and other Asian countries for thousands of years to treat various conditions.⁴⁻⁶
86 Studies of acupuncture usually focuses on its analgesic effect, such as relieving pain and
87 partly reducing opioid-related side effects during or after surgical procedures.⁷⁻¹¹
88 Particularly, the Centers for Medicare & Medicaid Services (CMS) of the USA finalizes
89 a decision to cover acupuncture for chronic low back pain for Medicare beneficiaries in
90 January 2020. Moreover, some studies have investigated the use of acupuncture on
91 reducing sedative and analgesic drug demands, and the duration of mechanical
92 ventilation, while improving patients' experience during mechanical ventilation.¹²⁻¹⁵
93 However, there are still a few discrepant research findings on the sedative and analgesic
94 effects of acupuncture.^{16 17} And studies investigating both the sedative and analgesic
95 effects of acupuncture among all critically ill patients needing mechanical ventilation in
96 ICU are limited.

97 Therefore, the PASSION study is designed to be an RCT which investigate the efficacy
98 of acupuncture on sedation and analgesia in mechanically ventilated critically ill
99 patients. We are going to test the hypothesis that acupuncture, as adjunctive therapy to

sedation and analgesia therapies, could reduce the duration of mechanical ventilation, the dose of administered sedatives and analgesics, and subsequently improve other clinical outcomes for critically ill patients when compared with sham acupuncture or non-acupuncture.

METHODS

Study Design Overview

This is a prospective, parallel-group, controlled trial will recruit 180 patients with a computer-generated allocation sequence and centralized randomization at tertiary and regional ICUs in 3 hospitals (Guangdong Provincial Hospital of Chinese Medicine, Charity Hospital of Guangzhou, University Hospital) in South China. Recruitment officially began on 03 November 2021, and the final follow-up of the last subject will not exceed 16 August 2023. Eligible patients will be randomly assigned, in a ratio of 1:1:1, to receive deep needle insertion with combined manual and alternating-mode electrical stimulation on acupoints (AC group, n =60), superficial needle insertion without manual or electrical stimulation on non-acupoints (SAC group, n =60) for 30 min/day, or no acupuncture intervention (NAC group, n =60), respectively.

Participants will be assessed for the duration of mechanical ventilation, as well as the dose of administered sedatives and analgesics at comparable sedation levels, from randomization until patients are free of mechanical ventilation (including noninvasive) without reinstitution for the following 48 hours. They will be also assessed for whether acupuncture can achieve better clinical outcomes than SAC and NAC treatment. The design of the trial is summarized in Figure 1.

Ethical Requirements and Registration

This protocol is approved by the Institutional Human Clinical Research Ethical Committee at Guangdong Provincial Hospital of Chinese Medicine (Guangzhou, China) in October 2021 with permission number ZF2021-144-01. The PASSION study was

1
2
3
4 126 registered on Nov 3, 2021 (ClinicalTrials.gov, number ChiCTR2100052650) and will
5
6 127 be conducted following the Declaration of Helsinki from 03 November 2021 to 16
7
8 128 August 2023.

9
10
11 129 Written informed consent will be provided before enrollment voluntarily. Considering
12
13 130 that patients will be sedated following ICU admission, complete adherence to patient
14
15 131 consent is deemed impossible. Patients or their authorized surrogates will be informed
16
17 132 by the researchers of the investigational nature and details of the study, together with
18
19 133 the possible risks and all the benefits. Written informed consent will be subsequently
20
21 134 obtained from either of them. Patients from whom surrogate consent is obtained are
22
23 135 asked again to provide informed consent once determined to be competent. They can
24
25 136 also withdraw from the study at any time they wish. Also, the investigator can decide to
26
27 137 withdraw a subject from the study for urgent medical reasons. The researcher should
28
29 138 complete the case report form (CRF) and record the reason for dropping out.

30
31
32 139 **Patients**

33
34 140 Patients from medical and surgical ICU, aging from 18 to 80 years, for expected
35
36 141 mechanical ventilation longer than 24 hours, with agitation and/or discomfort after
37
38 142 recovering from drugs used to facilitate endotracheal intubation, requiring sedation and
39
40 143 agitation by continuous intravenous administration deemed by the ICU physician, are
41
42 144 eligible for participation as soon as they or their authorized surrogates are willing to
43
44 145 give informed consent (Table 1).

46
47 146 **Table 1. Inclusion and exclusion criteria**

A. Inclusion criteria		B. Exclusion criteria
1. Aged 18 years or over and under 80 years;		1. Skin lesions near the acupuncture points;
2. Required mechanical ventilation >24 hours;		2. Coagulopathy (bleeding time >4 min, thrombocytes <50,000/μl;
3. Continuous intravenous administration of sedative and analgesic medications;		3. Hypohepatia with Childs-Pugh class B or C;

4. Willingness to provide informed consent prior to enrollment;	4. Second- or third-degree atrioventricular block;
5. Be able to comply with all follow-up evaluations (in investigator's opinion).	5. Severe dementia;
	6. Psychiatric disorder;
	7. Neurological disease;
	8. Active seizures;
	9. Alcohol or drug abuse;
	10. Benzodiazepine dependency;
	11. Moribund state with the planned withdrawal of life support;
	12. Family or physician refusal;
	13. Pregnancy or lactation;
	14. Currently participated in any other investigational therapeutic or device trial.

Exclusion criteria include skin lesions near the acupuncture points, coagulopathy (bleeding time >4 min, thrombocytes <50,000/ μ l), neurological disease (previous stroke, cerebral palsy, etc.) that would confound the diagnosis of delirium, active seizures, severe dementia, relevant psychiatric disorder, hypohepatia with Childs-Pugh class B or C, second- or third-degree atrioventricular block, alcohol or drug abuse, benzodiazepine dependency, a moribund state with the planned withdrawal of life support, family or physician refusal, pregnancy or lactation, currently participating in any other investigational therapeutic or device trial (Table 1).

ICU standard treatment

As a standard in each ICU of our study, mechanically ventilated critically ill patients will be treated in a single treatment room. They will be taken care of by a trained ICU physician responsible for all treatment decisions, including sedation analgesia management plans made in consultation with the bedside nurses. They will also receive one-to-one nursing care to adjust the treatment based on the patient's response in time. A team of medical officers will review patient care every day.

Randomization and blinding

1
2
3
4 163 Eligible patients will be stratified by participating sites to avoid patient-level
5
6 164 contamination from the systems-level organizational change in sedation practice and,
7
8 165 within each ICU, assigned to the AC, SAC, or NAC group in an equal ratio via
9
10 166 computer-generated randomization. In detail, an independent study coordinator will log
11
12 167 into the central randomization system using a password-protected account and enter
13
14 168 inclusion and exclusion criteria to ensure eligibility. After entering a patient's name and
15
16 169 identification card number, a randomization sequence will be generated in blocks of
17
18 170 varying sizes and stratified by the site under the control of the central computer system.
19
20 171 The random sequence will then be concealed in sealed envelopes and sent to an
21
22 172 acupuncturist from the assigned patient's site by the study coordinator.

23
24
25 173 Allocation of participants will be known to the study coordinator and acupuncturists
26
27 174 who will not be involved in outcome assessment and be required to sign a confidentiality
28
29 175 agreement about patient allocation. All patients will be treated in a single treatment
30
31 176 room. In both AC and SAC groups, patients, bedside nurses, and physicians will be
32
33 177 blinded to which acupuncture method the patients will receive. The data collectors and
34
35 178 the biostatisticians will be masked from the treatment assignment.

36
37
38 179 **Acupuncture interventions and procedures**

39
40 180 The acupuncture interventions will be developed by a consensus of acupuncture experts
41
42 181 according to the Standards for Reporting of Controlled Trials in Acupuncture
43
44 182 (STRICTA).¹⁸ Patients will be assigned in a ratio of 1:1:1 to AC group (n=60), SAC
45
46 183 group (n=60), and NAC group (n=60). Besides, each group shares the same basic
47
48 184 Sedation Analgesia Strategy.

49
50
51 185 For patients in the AC group, 8 disposable sterile acupuncture needles (filiform needles
52
53 186 made of stainless steel, Beijing Hanyi Medical Instruments, China) with a length of 40
54
55 187 mm and a diameter of 0.30 mm will be inserted into acupuncture points at Baihui
56
57 188 (DU20), Yintang (EX-HN3), and bilateral acupoints of Shenmen (HT7), Hegu (LI4),
58
59 189 Taichong (LR3) according to the theory of traditional Chinese medicine. The
60

1
2
3
4 190 localization of these points is measured with a unit of *cun*, a traditional Chinese unit of
5
6 191 length. One *cun* of a person is defined as the width of the thumb himself, whereas four
7
8 192 fingers are defined as 3 *cun*. The insertion will be followed by manual stimulation, a
9
10 193 lifting and thrusting technique combined with twirling and rotating the needle sheath to
11
12 194 produce a sensation of soreness, numbness, distention, or radiating. This sensation is
13
14 195 known as “*Deqi*” and is considered to be indicative of effective needling. Then,
15
16 196 alternating-mode electrical stimulation will be given with the parameters: bursts
17
18 197 alternating at 2 Hz and 100 Hz every 3 s, with 10-15 mA intensity inducing no
19
20 198 discomfort and no muscle contraction.

21
22
23 199 For patients in the SAC group, superficial needle insertion with a depth of 2 mm and no
24
25 200 manual stimulation will be performed for 30 min/day. The same sort of needles with the
26
27 201 AC group will be placed 1 cm distant lateral the used acupoints that are not known as
28
29 202 AC points. The electrical stimulator will likewise be connected but without electrical
30
31 203 stimulation. (Figure 2)

32
33
34 204 Patients in the NAC group will receive no acupuncture-related intervention during the
35
36 205 trial. But they can receive a free 12-session daily acupuncture treatment after completing
37
38 206 the study at their convenience.

39
40 207 Each site will be required to have 2 licensed acupuncturists with more than 3 years of
41
42 208 experience and specialized training in the acupuncture protocols before starting the
43
44 209 study. The acupuncturists will be responsible for the whole acupuncture process but are
45
46 210 not further involved in this study.

48 49 211 **Basic Sedation Analgesia Strategy**

50
51
52 212 In this study, diagnosis and therapeutic management of agitation and pain will be
53
54 213 prescribed by the physicians responsible for the clinical care of each patient according
55
56 214 to recommended guidelines¹⁹. An interruptive sedation strategy will be adopted by
57
58 215 bedside nurses, and sedation levels and pain intensity will be assessed with the
59
60 216 Richmond Agitation Sedation Scale (RASS)^{20 21}, the Behavioral Pain Scale (BPS), or

1
2
3
4 217 the Numeric Rating Scale (NRS) ^{22 23} every 4 h in order to adapt sedatives and analgesics
5
6 218 to avoid overuse. Authorized nurses will titrate infusions, including benzodiazepines,
7
8 219 propofol, and dexmedetomidine for sedatives and opiates for analgesia, instead of bolus
9
10 220 dosing to minimize potential adverse effects.
11
12
13 221 The sedation analgesia strategy is designed to consider pain treatment before increasing
14
15 222 sedatives to minimize the risk of oversedation. The pain will be assessed either by the
16
17 223 BPS in patients unable to communicate or by the NRS, a 1-10 numeric rating scale, in
18
19 224 those sufficiently oriented and awake to communicate with the medical staff. Efficacy
20
21 225 of the study analgesics drug will be defined as the ability to achieve a score < 3 in both
22
23 226 of the pain scoring systems above, evaluated by the bedside nurse. Efficacy of the
24
25 227 sedative drug will be defined as the ability to achieve a sedation score between -2 and
26
27 228 1, set by the patient's medical team using the RASS (a highly reliable and well-validated
28
29 229 sedation scale for use within patients) over time in the ICU.
30
31
32 230 Each morning, a daily interruption of sedation (DIS) will be performed at the clinical
33
34 231 medical team's discretion. Major opioid infusions needed for active pain will be
35
36 232 continued. Recommended criteria to interrupt sedation are used: no drug-induced
37
38 233 paralysis, no intracranial hypertension, no myocardial ischemia in the previous 24 h,
39
40 234 primary disease healing in progress, hemodynamic stability, the partial pressure of
41
42 235 arterial oxygen ≥ 60 mmHg, the fraction of inspired oxygen $\leq 50\%$, and positive end-
43
44 236 expiratory pressure ≤ 8 cmH₂O. The interruption of continuous sedation will be coupled
45
46 237 with an assessment hourly for wakefulness, defined as the RASS score 1 to 4, and the
47
48 238 ability to perform at least 3 of the following requests: eye-opening, tracking, hand
49
50 239 squeezing, and toe moving. With the criteria recommended, patients will be able to pass
51
52 240 the DIS if they can tolerate it for 4 h and keep awakening enough. Then, a spontaneous
53
54 241 breathing trial (SBT) will immediately be managed. ²⁴ If patients are insufficient for the
55
56 242 DIS, sedatives will be restarted at half the previous dose and then titrated to achieve
57
58 243 patient comfort. DIS will be performed the next morning again.
59
60

Extubation Test

Before extubation, patients will be managed with an SBT. During the SBT, without ventilatory support, patients will be allowed to breathe through a ventilatory circuit with 8cm H₂O PSV, 0 PEEP, and unchanged FiO₂ from the mechanical ventilation period leading up to the SBT.²⁵ The criteria for a successful SBT are respiratory rate between 8 and 35 breaths/min, arterial oxygen saturation > 88%, less than 20% change in mean arterial pressure or heart rate, no signs of respiratory distress and acute cardiac arrhythmia, no use of accessory muscles, no abdominal paradox, absence of sweating, agitation or impaired vigilance status. Patients will pass the SBT if they complete a 60 min trial meeting the criteria, and extubation will be implemented 6 h later. Patients who fail the SBT will be ventilated immediately with the ventilator settings used before the trial, and sedatives will be restarted at half the previous dose and then titrated to achieve patient comfort. The SBT will be managed the next morning again. Extubation will be implemented following standardized criteria, but the decision to extubate remains upon the authority of the attending physician in charge of the patient. Researchers will not participate in decisions to extubate patients.

The clinical research team will make sure that the overall research protocol, especially the criteria for sedation and definition of successful SBT, is strictly followed by the bedside nurse and medical teams in charge of the patients. Related information will be reported on the clinical research form.

Assessing Delirium

Delirium will be measured by the bedside nurses according to the Confusion Assessment Method for the ICU (CAM-ICU) until out of ICU or hospital discharge.²⁶ Patients will be considered in this state if they have a RASS score ≥ -3 and a positive CAM-ICU, defined as positive with the symptoms of feature 1, feature 2, and either feature 3 or feature 4 as follows:

Feature 1: acute onset of mental status change or fluctuation of mental status

1
2
3
4 271 Feature 2: inattention

5
6 272 Feature 3: disorganized thinking

7
8
9 273 Feature 4: altered level of consciousness

10
11
12 274 **Adverse Event Monitoring**

13
14
15 275 Adverse events will also be defined a priori and prospectively monitored. Adverse
16
17 276 events associated with acupuncture include bleeding, hematoma, and local infection.
18
19 277 Adverse events related to sedation and analgesia include inadequate pain and sedation
20
21 278 management (either pain score > 4 and RASS > 1 for 2 consecutive hours or pain and
22
23 279 agitation assumed present if receiving neuromuscular blockade), clinically significant
24
25 280 iatrogenic withdrawal. Adverse events associated with mechanical ventilation include
26
27 281 accidental removal of medical devices, extubation failure (reintubation within 24 hours),
28
29 282 pressure ulcers, catheter-associated bloodstream infections, ventilator-associated
30
31 283 pneumonia. Every day, research personnel will monitor and assess the seriousness of all
32
33 284 adverse events and document all details to determine whether the events are related to
34
35 285 acupuncture interventions or the study procedure, as well as developing further
36
37 286 treatment strategies including whether it is necessary to uncover blindness. A report of
38
39 287 all serious, unexpected, and study-related adverse events will be presented to an
40
41 288 independent data and safety monitoring board and the institutional review board within
42
43 289 7 days of occurrence.

44
45
46 290 **Outcomes and Data Collection**

47
48
49 291 The primary outcome is the duration of mechanical ventilation, defined as the time from
50
51 292 randomization to successful extubation without reinstitution for the following 48 hours.
52
53 293 The secondary outcomes will include the dose of administered sedatives and opiate
54
55 294 (absolute value as well as indexed value [total drug in mg/kg ÷ total number of hours
56
57 295 from the start of infusion to its ultimate discontinuation]) at comparable clinically
58
59 296 individualized target sedation goals throughout the study, the duration of ICU length of
60

Protected by copyright, including for uses related to text and data mining, AI training, and similar technologies.
Erasmus Hogeschool

stay, and hospital length of stay. Additional outcomes include the prevalence and days of delirium in ICU, mortality in ICU and within 28 days after randomization, and the number of ventilator-free days in 28 days.

The day of extubation is considered as the day of death for patients who died while still intubated. Censoring for ICU or hospital length analyses occurred at the time of death or study withdrawal. The number of ventilator-free days in 28 days is defined as days alive and not using mechanical ventilation between days 1 and 28. For the 28-day mortality analyses, patients are censored at the time of the last contact alive or at 28 days from enrollment, whichever is first.

Baseline demographic data will be collected from patients' records by the medical team, including the reason for ICU admission, Acute Physiology and Chronic Health Evaluation (APACHE) II scores and diagnostic classification, Sequential Organ Failure Assessment (SOFA) scores, hematological and blood chemistry data, and clinical data (detailed information of sedative and analgesic medications administered to the patients before randomization, cardiac safety profile including electrocardiograms and serum troponins, and liver function profile including serum bilirubin and glutamate pyruvate transaminase, etc.). Vital signs such as blood pressure, heart rate, heart rhythm, temperature, and oxygen saturations will be recorded and collected by the bedside nurses, as well as scores of RASS, BPS, NRS, and CAM-ICU. Moreover, adverse events data will also be collected from patients' records. All of data mentioned above will be entered using the double entry method.

Patient and public involvement statement

There is no patient or public involvement in the design, conduct, reporting or dissemination plans of this research.

Statistical Analysis

1
2
3
4 322 Statistical power is estimated using the reduction in duration of mechanical ventilation
5
6 323 as the primary outcome. According to Carrasco and colleagues, the mean (\pm standard
7
8 324 deviation) time for current sedation is 54.7 ± 12.3 hours.²⁷ We calculate that a sample
9
10325 size of 48 patients in each group will provide a power of 90% to detect a 15% relative
11
12326 reduction in intubation time at a two-sided significance level of 0.05. With a dropout
13
14327 rate of 20%, the estimated sample size will be 60 patients per group. Thus, a total of 180
15
16328 patients will be enrolled in the study.

17
18
19329 The per-protocol set (PPS), including patients who complete the study without having
20
21330 major protocol violations, is used for the evaluation of clinical outcomes. While the full
22
23331 analysis set (FAS), determined according to the intention-to-treat population (ITT) who
24
25332 undergo randomization except for those who are excluded after randomization, is not
26
27333 only used for evaluation of clinical outcomes but also baseline characteristics to measure
28
29334 the balance of the three groups before intervention. Missing data will be replaced by
30
31335 Markov Chain Monte Carlo (MCMC) method with 5-10 iterations according to the
32
33336 principle of multiple imputation. Continuous data will be presented as median and
34
35337 interquartile range, while categorical data as numbers and proportion. Normal
36
37338 distribution will be checked by the Kolmogorov test. For continuous variables, normal
38
39339 distributed data will be compared using one-way analysis of variance among three
40
41340 groups, and independent Student's t-test between any of the two groups. While the
42
43341 comparison of non-normally distributed parameters among three groups will be applied
44
45342 by ANOVA (Kruska Wallis), and then the Mann-Whitney U-test between any of the
46
47343 two groups. Categorical data will be compared by using Fisher's exact test or the chi-
48
49344 square test. Other factors that may affect the efficacy will be considered as co-variants
50
51345 for covariance analysis or Cox proportional hazards regression model. $P \leq 0.05$ will be
52
53346 considered to indicate statistical significance. All analyses will be done with R statistical
54
55347 software, version 4.0.2.

57
58348 **DISCUSSION**
59
60

This prospective trial is designed to provide evidence on the beneficial effect of acupuncture on reducing the duration of mechanical ventilation, avoiding excessive sedation and analgesia, as well as improving clinical outcomes in sedating mechanically ventilated ICU patients.

General analgesia and sedation are necessary for mechanically ventilated critically ill patients. However, overuse of sedative and analgesic medications may cause varying degrees of side effects, like respiratory drive reduction.²⁸ These side effects are associated with worsened clinical outcomes, such as prolonged mechanical ventilation and hospital length of stay, increased risk of delirium, and even higher mortality.²⁹⁻³⁰ With many sophisticated attempts to mitigate this clinical problem, it has thus far been identified that optimizing analgesia and sedation strategy is able to prevent excessive sedation and analgesia and improve the clinical outcome by reducing the duration and dosage of sedative and analgesic medications.³¹⁻³³ Thus, it become a key objective to formulate an intensive sedative and analgesic medications strategy when caring for critically ill patients.

The rationale for evaluating the ability of acupuncture on this subject is based on research findings that acupuncture can manage pain relief and facilitate opioid tapering by increasing the μ -opioid receptor binding ability and the release of the opioid peptide.³⁴⁻³⁵ According to the meta-analysis of acupuncture on pain relief, visual analog scale (VAS) pain scores in the AC group is lower than that in the NAC group [MD=-11.13, 95%CI(-13.59,-8.68), Z=8.9, P<0.00001], Figure 3A.³⁶⁻⁵⁰ However, there is a substantial heterogeneity of results in these trials ($I^2 = 70\%$). As shown in Figure 3B, heterogeneity decreases ($I^2 = 14\%$) when the studies by Xian Wang and Zheng Lihong are excluded, and the AC group consistently shows a greater pain relief compared to NAC group [MD=-10.92, 95%CI(-12.93,-8.91), Z=10.66, P<0.00001]. Meanwhile, acupuncture, without adverse effects, has been shown to exert sedation effects in various medical conditions. As it shown in the meta-analysis, with a high heterogeneity($I^2 =$

1
2
3
4 376 95%), the bispectral index (BIS) value in the AC group is also lower than that in the
5
6 377 NAC group [MD=-5.82,95%CI (-9.36, -2.27), Z=3.22, P=0.001], Figure 4A.⁵¹⁻⁵⁶ As
7
8 378 shown in Figure 4B, heterogeneity decreases ($I^2 = 0\%$) when the studies by J.
9
10379 Fleckenstein and Jiheng Chen are excluded, and the AC group consistently shows a
11
12380 better sedative effect compared to NAC group [MD=-3.18,95%CI(-5.53,-0.84),Z=2.66,
13
14381 $P < 0.008$]. In addition, previous studies have shown that Yintang (EX-HN3) and
15
16
17382 Shenmen (HT7) have good sedative effects, Hegu (LI4) and Taichong (LR3) have
18
19383 analgesic advantages, while Baihui (DU20) appears both sedative and analgesic
20
21384 effects.^{54 57-60} With these promising results, it is meaningful to assess acupuncture as a
22
23385 potential analgesia and sedation strategy in ameliorating the clinical outcomes in
24
25386 mechanically ventilated critically ill patients.

26
27
28387 RCT has been recognized as the gold standard for clinical trials since the late 20th
29
30388 century.⁶¹ Another important designed technique to improve the quality of clinical trials
31
32389 is blinding. Over the past several decades, RCT and blinding have been used to avoid
33
34390 bias (selection bias, performance bias, and ascertainment bias) in clinical trials and
35
36391 improve the reliability of effects assessment. Sham acupuncture, aiming to blind the
37
38392 participants and control therapeutic components, is designed as a placebo control.
39
40393 However, this acupuncture technique is relatively difficult to fabricate because it should
41
42394 be both biologically inert and psychologically indistinguishable.⁶² Even previous
43
44395 experience of acupuncture feeling might impact the present perception of verum and
45
46396 sham acupuncture intervention.

47
48
49397 In PASSION study, we utilize a rigorous set of methods to minimize bias, such as
50
51398 computer-generated central randomization, parallel control design, and statistical
52
53399 analysis according to the intent-to-treat principle. In control design, the superficial
54
55400 needle insertion without manual or electrical stimulation at the non-point is applied to
56
57401 simulate deep skin penetration in the SAC group, which is used as the most predominant
58
59402 type of sham electropuncture method to ensure blinding according to the published
60

literature.⁶³ However, a few studies reported that superficial needle insertion at non-acupoints might not be physiologically inert since the locations of points are nearby true acupoints.^{64 65} Moreover, researchers found that even mechanical non-penetration can evoke slight acupressure effects and physiological activity.⁶⁶ Both of these factors will affect the effect assessment of acupuncture. Thus, the NA group, avoiding all therapeutic components, is designed to clarify whether the sham acupuncture can be regarded as physiologically inert, as well as compared with the results of the AC group.

A potential limitation of this trial is blinding. Given the nature of acupuncture, the patients and members of the medical team in the NA group are impossible to be blinded throughout the entire duration of this trial. However, adequate measures will be taken to put the patients and medical team members of the other two groups in a masked state. For example, we will formulate a set of isolation and secrecy strategies for the study coordinator and acupuncturists to achieve satisfactory blinding levels in treatment administration. Thus, in both AC and SAC groups, patients and their medical team members will be blinded to the patients' acupuncture method. The data collectors and the biostatisticians will also be masked from the treatment assignment.

The PASSION study is designed to demonstrate the efficacy of acupuncture on sedation and analgesia in mechanically ventilated critically ill patients. We expect the finding can provide evidence-based recommendations for acupuncture use for sedation and analgesia in critically ill patients with mechanical ventilation.

FUNDING STATEMENT:

This study was funded by National Science Foundation (grant No. 81703877&82074216&82004135), Science and Technology Planning Project of Guangzhou (202102010301).

1
2
3
4 429
5
6 430
7
8 431
9
10 432
11
12 433
13
14 434
15
16 435
17
18 436
19
20
21 437
22
23
24 438
25
26 439
27
28 440
29
30 441
31
32 442
33
34
35 443
36
37 444
38
39 445
40
41 446
42
43 447
44
45 448
46
47 449
48
49
50
51
52
53
54
55
56
57
58
59
60

DISCLAIMER

The sponsors have had no role in the project development, in the collection of data, in the preparation of this manuscript, nor the decision to publish. The researchers have complete independence from the sources of funding in all aspects of this study.

PATIENT CONSENT FOR PUBLICATION

Consent obtained from parent(s)/guardian(s).

PROVENANCE AND PEER REVIEW

Not commissioned; externally peer reviewed.

ETHICS AND DISSEMINATION

The study was reviewed and approved by Ethics Committee of Guangdong Province Hospital of Chinese Medicine at Guangzhou University of Chinese Medicine (ZF2021-144-01) and performed in accordance with Guide for the Care and Use of Laboratory Animals published by the US National Institutes of Health (publication No. 85-23, revised 1996).

COMPETING INTERESTS STATEMENT

All authors declare that they have no conflict of interest.

AUTHORS' CONTRIBUTIONS

YZ & SM drafted this manuscript; GY, JW & FC made statistical analysis; MZZ made a critical revision of the manuscript and contributed to the rationalization of the study. All authors read and approved the final manuscript.

REFERENCE

1. Coursin DB, Skrobik Y. What Is Safe Sedation in the ICU? *New England Journal of Medicine* 2019;380(26):2577-78. doi: 10.1056/NEJMe1906522
2. Subramaniam B, Shankar P, Shaefi S, et al. Effect of Intravenous Acetaminophen vs Placebo Combined With Propofol or Dexmedetomidine on Postoperative Delirium Among Older Patients Following Cardiac Surgery The DEXACET Randomized Clinical Trial. *Jama-Journal of the American Medical Association* 2019;321(7):686-96. doi: 10.1001/jama.2019.0234
3. Shelton KT, Qu J, Bilotta F, et al. Minimizing ICU Neurological Dysfunction with Dexmedetomidine-induced Sleep (MINDDS): protocol for a randomised, double-blind, parallel-arm, placebo-controlled trial. *BMJ Open* 2018;8(4):e020316. doi: 10.1136/bmjopen-2017-020316 [published Online First: 2018/04/22]
4. Zhao L, Li D, Zheng H, et al. Acupuncture as Adjunctive Therapy for Chronic Stable Angina: A Randomized Clinical Trial. *Jama Internal Medicine* 2019;179(10):1388-97. doi: 10.1001/jamainternmed.2019.2407
5. Garcia MK, Meng Z, Rosenthal DI, et al. Effect of True and Sham Acupuncture on Radiation-Induced Xerostomia Among Patients With Head and Neck Cancer: A Randomized Clinical Trial. *Jama Network Open* 2019;2(12):e1916910. doi: 10.1001/jamanetworkopen.2019.16910
6. Pei W, Peng R, Gu Y, et al. Research trends of acupuncture therapy on insomnia in two decades (from 1999 to 2018): a bibliometric analysis. *Bmc Complementary and Alternative Medicine* 2019;19(1):225. doi: 10.1186/s12906-019-2606-5
7. He Y, Guo X, May BH, et al. Clinical Evidence for Association of Acupuncture and Acupressure With Improved Cancer Pain A Systematic Review and Meta-Analysis. *Jama Oncology* 2020;6(2):271-78. doi: 10.1001/jamaoncol.2019.5233
8. Smith CA, Armour M, Zhu X, et al. Acupuncture for dysmenorrhoea. *Cochrane Database of Systematic Reviews* 2016(4):CD007854. doi: 10.1002/14651858.CD007854.pub3
9. Manheimer E, Cheng K, Wieland LS, et al. Acupuncture for hip osteoarthritis. *Cochrane Database of Systematic Reviews* 2018(5):CD013010. doi: 10.1002/14651858.Cd013010
10. Dingemann J, Plewig B, Baumann I, et al. Acupuncture in posttonsillectomy pain A prospective, double-blinded, randomized, controlled trial. *Hno* 2017;65:73-79. doi: 10.1007/s00106-016-0290-z
11. Wu M-S, Chen K-H, Chen IF, et al. The Efficacy of Acupuncture in Post-Operative Pain Management: A Systematic Review and Meta-Analysis. *Plos One* 2016;11(3):e0150367. doi: 10.1371/journal.pone.0150367
12. Li Y, Li Y, Zhang WC, et al. Effects of acupuncture in Siguan points on man-machine counteraction in respiratory failure patients during mechanical ventilation. *Zhongguo Zhong Xi Yi Jie He Za Zhi* 2006;26(10):930-32.
13. Tsay SL, Wang JC, Lin KC, et al. Effects of acupressure therapy for patients having prolonged mechanical ventilation support. *J Adv Nurs* 2005;52(2):142-50. doi: 10.1111/j.1365-2648.2005.03576.x [published Online First: 2005/09/17]
14. AminiSaman J, Mohammadi S, Karimpour H, et al. Transcutaneous Electrical Nerve Stimulation at the Acupuncture Points to Relieve Pain of Patients Under Mechanical Ventilation: A Randomized Controlled Study. *J Acupunct Meridian Stud* 2018;11(5):290-95. doi: 10.1016/j.jams.2018.06.008 [published Online First: 2018/07/24]
15. Yuan SC, Huang XL, Hua SY, et al. Effect of acupuncture on diaphragmatic function in patients with AECOPD type II respiratory failure evaluated by ultrasound detection. *Zhongguo Zhen Jiu* 2021;41(07):703-10. doi: 10.13703/j.0255-2930.20200606-k0007
16. Irnich D, Behrens N, Molzen H, et al. Randomised trial of acupuncture compared with conventional massage and "sham" laser acupuncture for treatment of chronic neck pain. *BMJ* 2001;322(7302):1574-8. doi: 10.1136/bmj.322.7302.1574 [published Online First: 2001/06/30]

1
2
3 492 17. Kong JT, Puetz C, Tian L, et al. Effect of Electroacupuncture vs Sham Treatment on Change in Pain Severity Among
4 493 Adults With Chronic Low Back Pain: A Randomized Clinical Trial. *JAMA Netw Open* 2020;3(10):e2022787. doi:
5 494 10.1001/jamanetworkopen.2020.22787 [published Online First: 2020/10/28]
6 495
7 495 18. MacPherson H, Altman DG, Hammerschlag R, et al. Revised STAndards for Reporting Interventions in Clinical Trials
8 496 of Acupuncture (STRICTA): extending the CONSORT statement. *Acupuncture in Medicine* 2010;28(2):83-93.
10 497 doi: 10.1136/aim.2009.001370
11 498
12 498 19. Barr J, Fraser GL, Puntillo K, et al. Clinical Practice Guidelines for the Management of Pain, Agitation, and Delirium
13 499 in Adult Patients in the Intensive Care Unit. *Critical Care Medicine* 2013;41(1):263-306. doi:
14 500 10.1097/CCM.0b013e3182783b72
15 501
16 501 20. Ely EW, Truman B, Shintani A, et al. Monitoring sedation status over time in ICU patients - Reliability and validity of
17 502 the Richmond Agitation-Sedation Scale (RASS). *Jama-Journal of the American Medical Association*
18 503 2003;289(22):2983-91. doi: 10.1001/jama.289.22.2983
19 504
20 504 21. Sessler CN, Gosnell MS, Grap MJ, et al. The Richmond Agitation-Sedation Scale - Validity and reliability in adult
21 505 intensive care unit patients. *American Journal of Respiratory and Critical Care Medicine* 2002;166(10):1338-44.
22 506 doi: 10.1164/rccm.2107138
23 507
24 507 22. Payen JF, Bru O, Bosson JL, et al. Assessing pain in critically ill sedated patients by using a behavioral pain scale.
25 508 *Critical Care Medicine* 2001;29(12):2258-63. doi: 10.1097/00003246-200112000-00004
26 509
27 509 23. Chanques G, Viel E, Constantin J-M, et al. The measurement of pain in intensive care unit: Comparison of 5 self-report
28 510 intensity scales. *Pain* 2010;151(3):711-21. doi: 10.1016/j.pain.2010.08.039
29 511
30 511 24. Girard TD, Kress JP, Fuchs BD, et al. Efficacy and safety of a paired sedation and ventilator weaning protocol for
31 512 mechanically ventilated patients in intensive care (Awakening and Breathing Controlled trial): a randomised
32 513 controlled trial. *Lancet* 2008;371(9607):126-34. doi: 10.1016/s0140-6736(08)60105-1
33 514
34 514 25. Subira C, Hernandez G, Vazquez A, et al. Effect of Pressure Support vs T-Piece Ventilation Strategies During
35 515 Spontaneous Breathing Trials on Successful Extubation Among Patients Receiving Mechanical Ventilation A
36 516 Randomized Clinical Trial. *Jama-Journal of the American Medical Association* 2019;321(22):2175-82. doi:
37 517 10.1001/jama.2019.7234
38 518
39 518 26. Hui D, Frisbee-Hume S, Wilson A, et al. Effect of Lorazepam With Haloperidol vs Haloperidol Alone on Agitated
40 519 Delirium in Patients With Advanced Cancer Receiving Palliative Care A Randomized Clinical Trial. *Jama-*
41 520 *Journal of the American Medical Association* 2017;318(11):1047-56. doi: 10.1001/jama.2017.11468
42 521
43 521 27. Carrasco G, Molina R, Costa J, et al. Propofol vs midazolam in short-, medium-, and long-term sedation of critically
44 522 ill patients. A cost-benefit analysis. *Chest* 1993;103(2):557-64. doi: 10.1378/chest.103.2.557
45 523
46 523 28. Liu L, Wu A-P, Yang Y, et al. Effects of Propofol on Respiratory Drive and Patient-ventilator Synchrony during
47 524 Pressure Support Ventilation in Postoperative Patients: A Prospective Study. *Chinese Medical Journal*
48 525 2017;130(10):1155-60. doi: 10.4103/0366-6999.205864
49 526
50 526 29. Kollef MH, Levy NT, Ahrens TS, et al. The use of continuous IV sedation is associated with prolongation of mechanical
51 527 ventilation. *Chest* 1998;114(2):541-48. doi: 10.1378/chest.114.2.541
52 528
53 528 30. Ouimet S, Kavanagh BP, Gottfried S, et al. Incidence, risk factors and consequences of ICU delirium. *Intensive Care*
54 529 *Medicine* 2007;33(1):66-73. doi: 10.1007/s00134-006-0399-8
55 530
56 530 31. Chanques G, Conseil M, Roger C, et al. Immediate interruption of sedation compared with usual sedation care in
57 531 critically ill postoperative patients (SOS-Ventilation): a randomised, parallel-group clinical trial. *Lancet*
58 532 *Respiratory Medicine* 2017;5(10):795-805. doi: 10.1016/s2213-2600(17)30304-1
59 533
60 533 32. Mehta S, Burry L, Cook D, et al. Daily Sedation Interruption in Mechanically Ventilated Critically Ill Patients Cared

- for With a Sedation Protocol A Randomized Controlled Trial. *Jama-Journal of the American Medical Association* 2012;308(19):1985-92. doi: 10.1001/jama.2012.13872
33. Asmussen S, Przkora R, Maybauer DM, et al. Meta-Analysis of Electroacupuncture in Cardiac Anesthesia and Intensive Care. *Journal of Intensive Care Medicine* 2019;34(8):652-61. doi: 10.1177/0885066617708558
34. Harris RE, Zubieta J-K, Scott DJ, et al. Traditional Chinese acupuncture and placebo (sham) acupuncture are differentiated by their effects on mu-opioid receptors (MORs). *Neuroimage* 2009;47(3):1077-85. doi: 10.1016/j.neuroimage.2009.05.083
35. Han JS. Acupuncture: neuropeptide release produced by electrical stimulation of different frequencies. *Trends in Neurosciences* 2003;26(1):17-22. doi: 10.1016/s0166-2236(02)00006-1
36. Wang B, Tang J, White PF, et al. Effect of the intensity of transcutaneous acupoint electrical stimulation on the postoperative analgesic requirement. *Anesth Analg* 1997;85(2):406-13. doi: 10.1097/00000539-199708000-00029 [published Online First: 1997/08/01]
37. Usichenko TI, Dinse M, Hermesen M, et al. Auricular acupuncture for pain relief after total hip arthroplasty - a randomized controlled study. *Pain* 2005;114(3):320-27. doi: 10.1016/j.pain.2004.08.021 [published Online First: 2005/03/22]
38. White P, Lewith G, Prescott P, et al. Acupuncture versus placebo for the treatment of chronic mechanical neck pain: a randomized, controlled trial. *Ann Intern Med* 2004;141(12):911-19. doi: 10.7326/0003-4819-141-12-200412210-00007 [published Online First: 2004/12/22]
39. Gaubeca-Gilarranz A, Fernandez-de-Las-Penas C, Medina-Torres JR, et al. Effectiveness of dry needling of rectus abdominis trigger points for the treatment of primary dysmenorrhoea: a randomised parallel-group trial. *Acupunct Med* 2018;36(5):302-10. doi: 10.1136/acupmed-2017-011566 [published Online First: 2018/05/04]
40. Kennedy S, Baxter GD, Kerr DP, et al. Acupuncture for acute non-specific low back pain: a pilot randomised non-penetrating sham controlled trial. *Complement Ther Med* 2008;16(3):139-46. doi: 10.1016/j.ctim.2007.03.001 [published Online First: 2008/06/07]
41. Lv Y, He H, Xie J, et al. Effects of transcutaneous acupoint electrical stimulation combined with low-dose sufentanil pretreatment on the incidence and severity of etomidate-induced myoclonus: A randomized controlled trial. *Medicine (Baltimore)* 2018;97(23):e10969. doi: 10.1097/MD.00000000000010969 [published Online First: 2018/06/08]
42. Ma W, Bai W, Lin C, et al. Effects of Sanyinjiao (SP6) with electroacupuncture on labour pain in women during labour. *Complement Ther Med* 2011;19 Suppl 1:S13-8. doi: 10.1016/j.ctim.2010.09.001 [published Online First: 2011/01/05]
43. Mavrommatis CI, Argyra E, Vadalouka A, et al. Acupuncture as an adjunctive therapy to pharmacological treatment in patients with chronic pain due to osteoarthritis of the knee: a 3-armed, randomized, placebo-controlled trial. *Pain* 2012;153(8):1720-26. doi: 10.1016/j.pain.2012.05.005 [published Online First: 2012/06/26]
44. Ng SSM, Leung WW, Mak TWC, et al. Electroacupuncture reduces duration of postoperative ileus after laparoscopic surgery for colorectal cancer. *Gastroenterology* 2013;144(2):307-13 e1. doi: 10.1053/j.gastro.2012.10.050 [published Online First: 2012/11/13]
45. Sui M, Jiang N, Yan L, et al. Effect of Electroacupuncture on Shoulder Subluxation in Poststroke Patients with Hemiplegic Shoulder Pain: A Sham-Controlled Study Using Multidimensional Musculoskeletal Ultrasound Assessment. *Pain Res Manag* 2021;2021:5329881. doi: 10.1155/2021/5329881 [published Online First: 2021/11/30]
46. Tabassi KT, Amini P, Mohammadi S, et al. The effect of acupuncture on pain score after open kidney surgery. *J*

1
2
3 576 *Complement Integr Med* 2015;12(3):241-44. doi: 10.1515/jcim-2014-0071 [published Online First: 2015/04/30]
4
5 577 47. Wang X, Yin X, Guo XT, et al. Effects of the pestle needle therapy, a type of acupoint stimulation, on post-
6 578 hemorrhoidectomy pain: A randomized controlled trial. *J Integr Med* 2020;18(6):492-98. doi:
7 579 10.1016/j.joim.2020.08.001 [published Online First: 2020/08/17]
8
9 580 48. Wong RH, Lee TW, Sihoe AD, et al. Analgesic effect of electroacupuncture in postthoracotomy pain: a prospective
10 581 randomized trial. *Ann Thorac Surg* 2006;81(6):2031-6. doi: 10.1016/j.athoracsur.2005.12.064 [published Online
11 582 First: 2006/05/30]
12
13 583 49. Yu X, Zhang F, Chen B. The effect of TEAS on the quality of early recovery in patients undergoing gynecological
14 584 laparoscopic surgery: a prospective, randomized, placebo-controlled trial. *Trials* 2020;21(1):43. doi:
15 585 10.1186/s13063-019-3892-4 [published Online First: 2020/01/10]
16
17 586 50. Zheng LH, Sun H, Wang GN, et al. Effect of transcutaneous electrical acupoint stimulation on nausea and vomiting
18 587 induced by patient controlled intravenous analgesia with tramadol. *Chin J Integr Med* 2008;14(1):61-4. doi:
19 588 10.1007/s11655-007-9006
20 589 10.1007/s11655-007-9006-2 [published Online First: 2008/01/26]
21
22 590 51. Chen J, Zhang Y, Li X, et al. Efficacy of transcutaneous electrical acupoint stimulation combined with general
23 591 anesthesia for sedation and postoperative analgesia in minimally invasive lung cancer surgery: A randomized,
24 592 double-blind, placebo-controlled trial. *Thorac Cancer* 2020;11(4):928-34. doi: 10.1111/1759-7714.13343
25 593 [published Online First: 2020/02/18]
26
27 594 52. Fleckenstein J, Baeumler P, Gurschler C, et al. Acupuncture reduces the time from extubation to 'ready for discharge'
28 595 from the post anaesthesia care unit: results from the randomised controlled AcuARP trial. *Sci Rep*
29 596 2018;8(1):15734. doi: 10.1038/s41598-018-33459-y [published Online First: 2018/10/26]
30
31 597 53. Cabrini L, Gioia L, Gemma M, et al. Bispectral index evaluation of the sedative effect of acupuncture in healthy
32 598 volunteers. *J Clin Monit Comput* 2006;20(5):311-5. doi: 10.1007/s10877-006-9026-z [published Online First:
33 599 2006/09/22]
34
35 600 54. Zheng X, Meng JB, Fang Q. Electroacupuncture reduces the dose of midazolam monitored by the bispectral index in
36 601 critically ill patients with mechanical ventilation: an exploratory study. *Acupunct Med* 2012;30(2):78-84. doi:
37 602 10.1136/acupmed-2011-010095 [published Online First: 2012/03/31]
38
39 603 55. Feng X, Li J, Wu L, et al. Effect of combined electroacupuncture and epidural anesthesia in gynecological operation
40 604 evaluated by bispectral index. *Zhongguo Zhong Xi Yi Jie He Za Zhi* 2010;30(02):150-52.(Chinese).
41
42 605 56. Zheng X, Wan L, Gao F, et al. Effect of ear point embedding on plasma and effect site concentrations of propofol-
43 606 remifentanyl in elderly patients after target-controlled induction. *Zhongguo Zhen Jiu* 2017;37(08):869-73. Chinese.
44 607 doi: 10.13703/j.0255-2930.2017.08.017
45
46 608 57. Lee KC, Chao YC, Lin YP, et al. Effectiveness of Self-administered Acupressure for Family Caregivers of Advanced
47 609 Cancer Patients With Insomnia: A Randomized Controlled Trial. *Cancer Nurs* 2022;45(1):E1-E9. doi:
48 610 10.1097/NCC.0000000000000870 [published Online First: 2020/08/03]
49
50 611 58. Chen QQ, Wei QL, Zhang XH. Effects of electroacupuncture on supplementary analgesia and improvement of adverse
51 612 reactions induced by dolantin in oocyte retrieval. *Zhongguo Zhen Jiu* 2012;32(12):1113-16.
52
53 613 59. Xiao J, Yi W, Wu L. Effects of electroacupuncture on reducing labor pain and complications in the labor analgesia
54 614 process of combined spinal-epidural analgesia with patient-controlled epidural analgesia. *Arch Gynecol Obstet*
55 615 2019;299(1):123-28. doi: 10.1007/s00404-018-4955-6 [published Online First: 2018/11/15]
56
57 616 60. Chen TY, Zhou J, Wang K, et al. Electroacupuncture Intervention Combined with Anesthetics for Analgesia and Post-
58 617 surgical Gastrointestinal Recovery in Pneumectomy Patients. *Zhen Ci Yan Jiu* 2019;40(6):461-64.
59
60

61. Meldrum ML. A brief history of the randomized controlled trial - From oranges and lemons to the gold standard. *Hematology-Oncology Clinics of North America* 2000;14(4):745-60. doi: 10.1016/s0889-8588(05)70309-9
62. Boutron I, Guittet L, Estellat C, et al. Reporting methods of blinding in randomized trials assessing nonpharmacological treatments. *Plos Medicine* 2007;4(2):370-80. doi: 10.1371/journal.pmed.0040061
63. Chen Z-x, Li Y, Zhang X-g, et al. Sham Electroacupuncture Methods in Randomized Controlled Trials. *Scientific Reports* 2017;7:40837. doi: 10.1038/srep40837
64. Lund I, Lundeberg T. Are minimal, superficial or sham acupuncture procedures acceptable as inert placebo controls? *Acupuncture in medicine : journal of the British Medical Acupuncture Society* 2006;24(1):13-5.
65. Lundeberg T, Lund I, Naslund J, et al. The Emperor's sham - wrong assumption that sham needling is sham. *Acupuncture in Medicine* 2008;26(4):239-42. doi: 10.1136/aim.26.4.239
66. Kim T-H, Lee MS, Alraek T, et al. Acupuncture in sham device controlled trials may not be as effective as acupuncture in the real world: a preliminary network meta-analysis of studies of acupuncture for hot flashes in menopausal women. *Acupuncture in Medicine* 2020;38(1):37-44. doi: 10.1136/acupmed-2018-011671

1
2
3
4
5
6
7
8
9
10
11
12
13
14
15
16
17
18
19
20
21
22
23
24
25
26
27
28
29
30
31
32
33
34
35
36
37
38
39
40
41
42
43
44
45
46
47
48
49
50
51
52
53
54
55
56
57
58
59
60

Figure legend:

Figure 1. Trial design of PASSION study

Figure 2. Illustration of the sham points

Figure 3. Forest plot of AC group versus NAC group.

Figure 4. Forest plot of AC group versus NAC group.

For peer review only

Protected by copyright, including for uses related to text and data mining, AI training, and similar technologies.
Erasmus Hogeschool

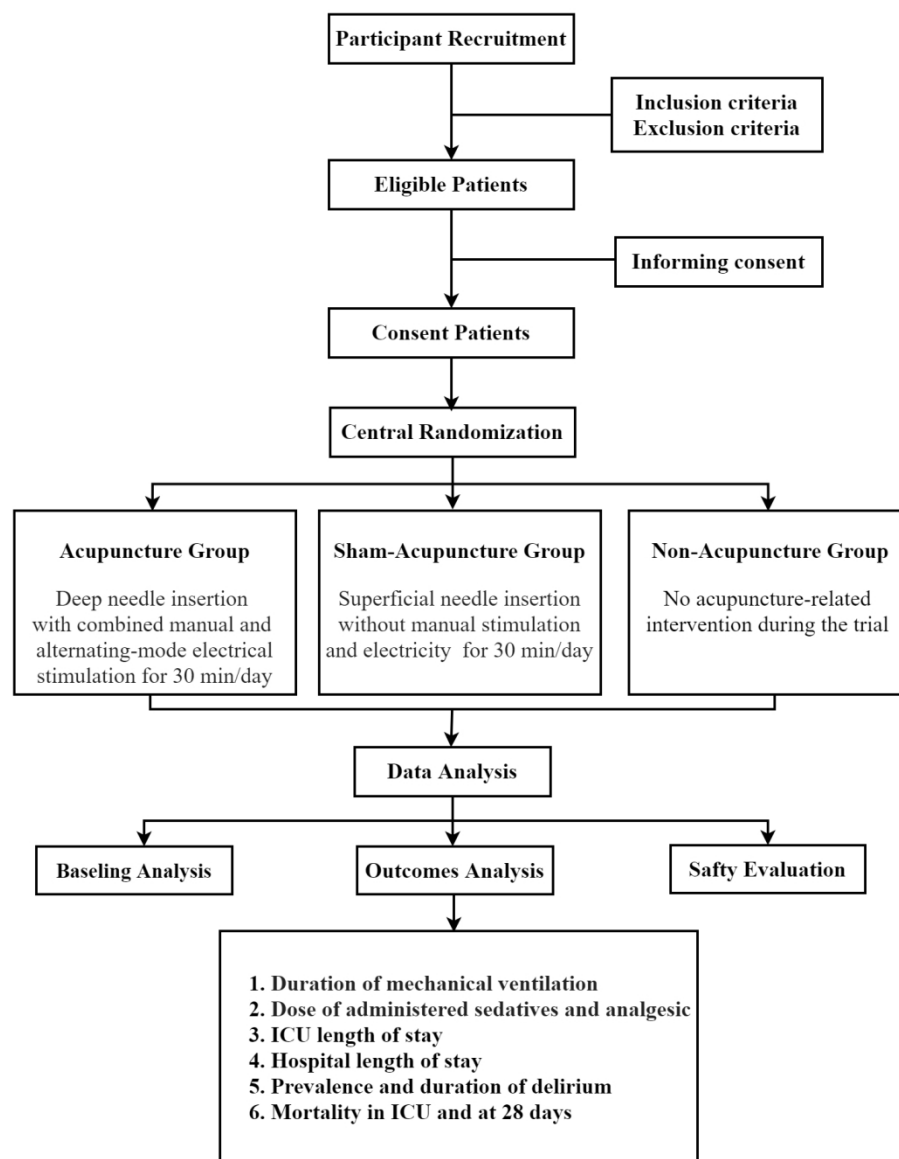


Figure 1

543x691mm (72 x 72 DPI)

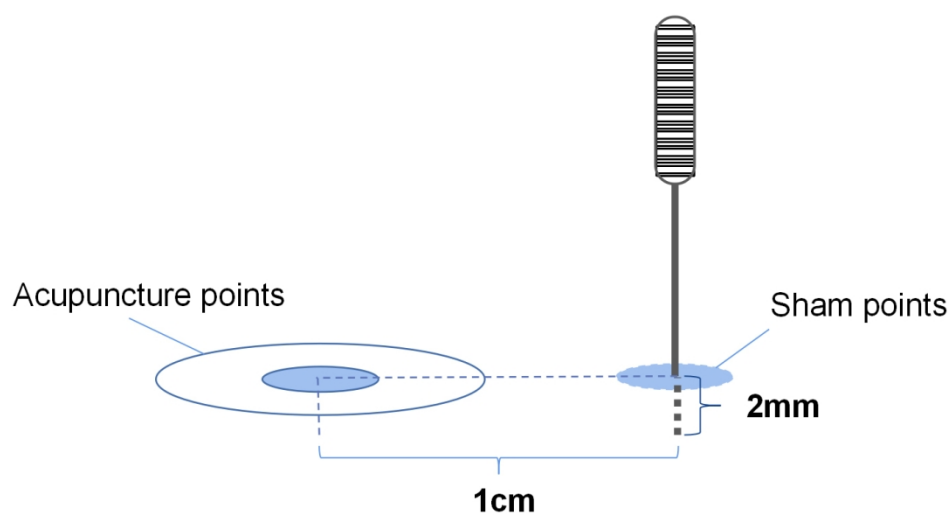


Figure 2

398x221mm (96 x 96 DPI)

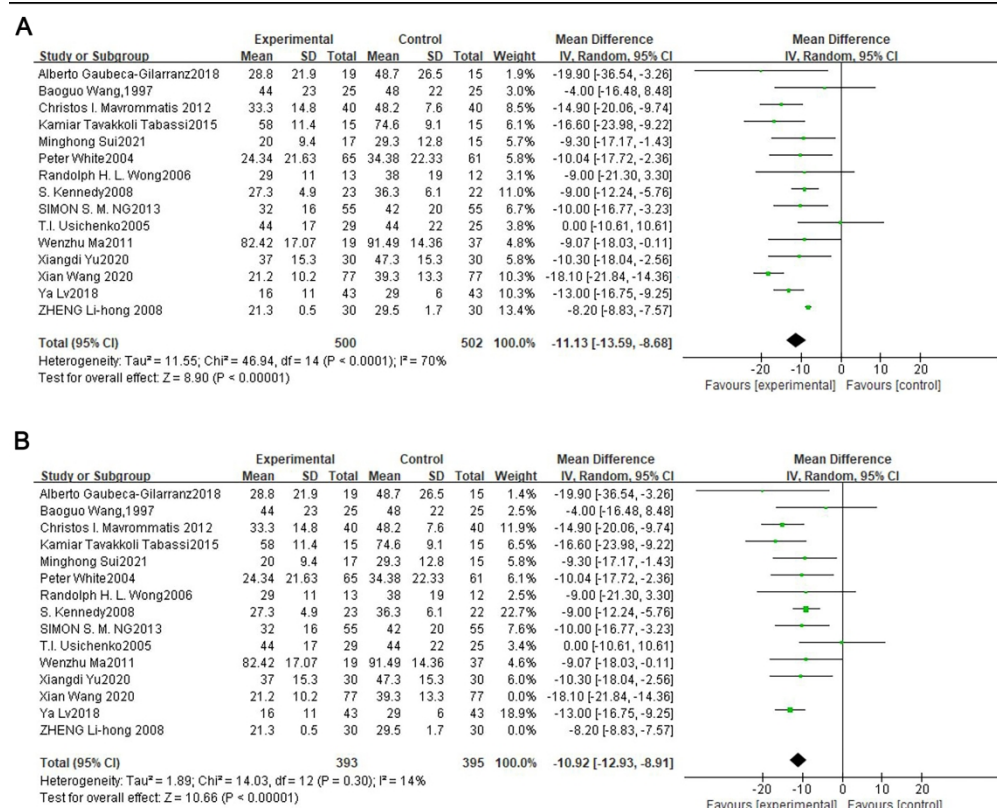


Figure3

199x162mm (300 x 300 DPI)

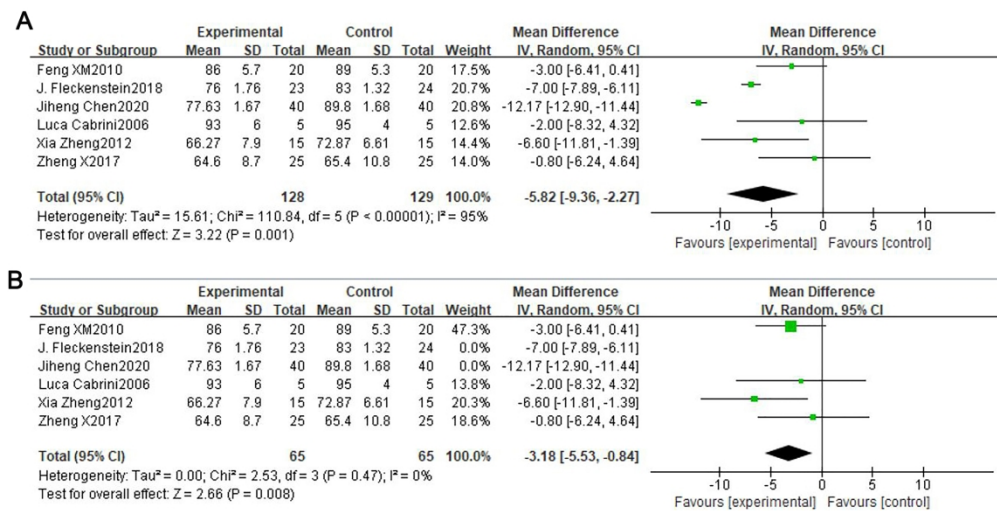


Figure4

199x101mm (300 x 300 DPI)

Reporting checklist for protocol of a clinical trial.

Based on the SPIRIT guidelines.

Instructions to authors

Complete this checklist by entering the page numbers from your manuscript where readers will find each of the items listed below.

Your article may not currently address all the items on the checklist. Please modify your text to include the missing information. If you are certain that an item does not apply, please write "n/a" and provide a short explanation.

Upload your completed checklist as an extra file when you submit to a journal.

In your methods section, say that you used the SPIRIT reporting guidelines, and cite them as:

Chan A-W, Tetzlaff JM, Gøtzsche PC, Altman DG, Mann H, Berlin J, Dickersin K, Hróbjartsson A, Schulz KF, Parulekar WR, Krleža-Jerić K, Laupacis A, Moher D. SPIRIT 2013 Explanation and Elaboration: Guidance for protocols of clinical trials. BMJ. 2013;346:e7586

Reporting Item			Page Number
Administrative information			
Title	#1	Descriptive title identifying the study design, population, interventions, and, if applicable, trial acronym	Page 1, line 1-4.
Trial registration	#2a	Trial identifier and registry name. If not yet registered, name of intended registry	Page 3, line 58; Page 7, line 130.
Trial registration: data set	#2b	All items from the World Health Organization Trial Registration Data Set	n/a
Protocol version	#3	Date and version identifier	n/a
Funding	#4	Sources and types of financial, material, and other support	Page 18, line 427-434.

1	Roles and	#5a	Names, affiliations, and roles of protocol contributors	Page 1;
2	responsibilities:			Page 18-
3	contributorship			19, line
4				444-449.
5				
6				
7				
8	Roles and	#5b	Name and contact information for the trial sponsor	Page 18,
9	responsibilities:			line 427-
10	sponsor contact			434.
11	information			
12				
13				
14	Roles and	#5c	Role of study sponsor and funders, if any, in study	Page 18,
15	responsibilities:		design; collection, management, analysis, and	line 435-
16	sponsor and funder		interpretation of data; writing of the report; and the	438.
17			decision to submit the report for publication, including	
18			whether they will have ultimate authority over any of	
19			these activities	
20				
21				
22				
23				
24				
25	Roles and	#5d	Composition, roles, and responsibilities of the	Page 13,
26	responsibilities:		coordinating centre, steering committee, endpoint	line 290-
27	committees		adjudication committee, data management team, and	292.
28			other individuals or groups overseeing the trial, if	
29			applicable (see Item 21a for data monitoring committee)	
30				
31				
32				
33	Introduction			
34				
35				
36	Background and	#6a	Description of research question and justification for	Page 5,
37	rationale		undertaking the trial, including summary of relevant	line 77-
38			studies (published and unpublished) examining benefits	100.
39			and harms for each intervention	
40				
41				
42				
43	Background and	#6b	Explanation for choice of comparators	Page 6,
44	rationale: choice of			line 106-
45	comparators			107.
46				
47				
48	Objectives	#7	Specific objectives or hypotheses	Page 6,
49				line 103-
50				107.
51				
52				
53	Trial design	#8	Description of trial design including type of trial (eg,	Page 5-6,
54			parallel group, crossover, factorial, single group),	line 101-
55			allocation ratio, and framework (eg, superiority,	103.
56			equivalence, non-inferiority, exploratory)	
57				
58				
59				
60				

Methods:

Participants, interventions, and outcomes

Study setting	#9	Description of study settings (eg, community clinic, academic hospital) and list of countries where data will be collected. Reference to where list of study sites can be obtained	Page 6, line 112-113.
Eligibility criteria	#10	Inclusion and exclusion criteria for participants. If applicable, eligibility criteria for study centres and individuals who will perform the interventions (eg, surgeons, psychotherapists)	Page 7-8, line 144-157. Page 8, line 159-164; Page 10, line 210-213;
Interventions: description	#11a	Interventions for each group with sufficient detail to allow replication, including how and when they will be administered	Page 9-10, line 188-213;
Interventions: modifications	#11b	Criteria for discontinuing or modifying allocated interventions for a given trial participant (eg, drug dose change in response to harms, participant request, or improving / worsening disease)	Page 13, line 286-290;
Interventions: adherence	#11c	Strategies to improve adherence to intervention protocols, and any procedures for monitoring adherence (eg, drug tablet return; laboratory tests)	Page 8, line 207-209.
Interventions: concomitant care	#11d	Relevant concomitant care and interventions that are permitted or prohibited during the trial	n/a

1	Outcomes	#12	Primary, secondary, and other outcomes, including the	Page 13,
2			specific measurement variable (eg, systolic blood	line 294-
3			pressure), analysis metric (eg, change from baseline,	302;
4			final value, time to event), method of aggregation (eg,	
5			median, proportion), and time point for each outcome.	
6			Explanation of the clinical relevance of chosen efficacy	
7			and harm outcomes is strongly recommended	
8				
9				
10				
11				
12	Participant timeline	#13	Time schedule of enrolment, interventions (including any	Page 9,
13			run-ins and washouts), assessments, and visits for	line183-
14			participants. A schematic diagram is highly	187.
15			recommended (see Figure)	
16				
17				
18				
19				
20	Sample size	#14	Estimated number of participants needed to achieve	Page 14,
21			study objectives and how it was determined, including	line 325-
22			clinical and statistical assumptions supporting any	331;
23			sample size calculations	
24				
25				
26				
27	Recruitment	#15	Strategies for achieving adequate participant enrolment	Page 14,
28			to reach target sample size	line 330-
29				331.
30				
31				
32				
33				
34				
35	Methods:			
36	Assignment of			
37	interventions (for			
38	controlled trials)			
39				
40				
41				
42	Allocation: sequence	#16a	Method of generating the allocation sequence (eg,	Page 8,
43	generation		computer-generated random numbers), and list of any	line 166-
44			factors for stratification. To reduce predictability of a	175.
45			random sequence, details of any planned restriction (eg,	
46			blocking) should be provided in a separate document	
47			that is unavailable to those who enrol participants or	
48			assign interventions	
49				
50				
51				
52				
53	Allocation	#16b	Mechanism of implementing the allocation sequence (eg,	Page 8,
54	concealment		central telephone; sequentially numbered, opaque,	line 166-
55	mechanism		sealed envelopes), describing any steps to conceal the	175.
56			sequence until interventions are assigned	
57				
58				
59				
60				

Allocation: implementation	#16c	Who will generate the allocation sequence, who will enrol participants, and who will assign participants to interventions	Page 8, line 169-175.
Blinding (masking)	#17a	Who will be blinded after assignment to interventions (eg, trial participants, care providers, outcome assessors, data analysts), and how	Page 8, line 179-181.
Blinding (masking): emergency unblinding	#17b	If blinded, circumstances under which unblinding is permissible, and procedure for revealing a participant's allocated intervention during the trial	Page 13, line 286-290.
Methods: Data collection, management, and analysis			
Data collection plan	#18a	Plans for assessment and collection of outcome, baseline, and other trial data, including any related processes to promote data quality (eg, duplicate measurements, training of assessors) and a description of study instruments (eg, questionnaires, laboratory tests) along with their reliability and validity, if known. Reference to where data collection forms can be found, if not in the protocol	Page 13-14, line 309-320.
Data collection plan: retention	#18b	Plans to promote participant retention and complete follow-up, including list of any outcome data to be collected for participants who discontinue or deviate from intervention protocols	Page 10, line 207-209.
Data management	#19	Plans for data entry, coding, security, and storage, including any related processes to promote data quality (eg, double data entry; range checks for data values). Reference to where details of data management procedures can be found, if not in the protocol	Page 14, line 320
Statistics: outcomes	#20a	Statistical methods for analysing primary and secondary outcomes. Reference to where other details of the	Page 14-15, line

		statistical analysis plan can be found, if not in the protocol	332-349.
Statistics: additional analyses	#20b	Methods for any additional analyses (eg, subgroup and adjusted analyses)	Page14, line 337-338.
Statistics: analysis population and missing data	#20c	Definition of analysis population relating to protocol non-adherence (eg, as randomised analysis), and any statistical methods to handle missing data (eg, multiple imputation)	Page14, line 337-338.
Methods: Monitoring			
Data monitoring: formal committee	#21a	Composition of data monitoring committee (DMC); summary of its role and reporting structure; statement of whether it is independent from the sponsor and competing interests; and reference to where further details about its charter can be found, if not in the protocol. Alternatively, an explanation of why a DMC is not needed	Page13, line 290-292.
Data monitoring: interim analysis	#21b	Description of any interim analyses and stopping guidelines, including who will have access to these interim results and make the final decision to terminate the trial	n/a
Harms	#22	Plans for collecting, assessing, reporting, and managing solicited and spontaneously reported adverse events and other unintended effects of trial interventions or trial conduct	Page12, line 286-292.
Auditing	#23	Frequency and procedures for auditing trial conduct, if any, and whether the process will be independent from investigators and the sponsor	n/a
Ethics and dissemination			
Research ethics approval	#24	Plans for seeking research ethics committee / institutional review board (REC / IRB) approval	Page 6-7, line127-129.

Protocol amendments	#25	Plans for communicating important protocol modifications (eg, changes to eligibility criteria, outcomes, analyses) to relevant parties (eg, investigators, REC / IRBs, trial participants, trial registries, journals, regulators)	n/a
Consent or assent	#26a	Who will obtain informed consent or assent from potential trial participants or authorised surrogates, and how (see Item 32)	Page 7, line 135-137.
Consent or assent: ancillary studies	#26b	Additional consent provisions for collection and use of participant data and biological specimens in ancillary studies, if applicable	n/a
Confidentiality	#27	How personal information about potential and enrolled participants will be collected, shared, and maintained in order to protect confidentiality before, during, and after the trial	Page 13-14, line 309-320.
Declaration of interests	#28	Financial and other competing interests for principal investigators for the overall trial and each study site	n/a
Data access	#29	Statement of who will have access to the final trial dataset, and disclosure of contractual agreements that limit such access for investigators	n/a
Ancillary and post trial care	#30	Provisions, if any, for ancillary and post-trial care, and for compensation to those who suffer harm from trial participation	n/a
Dissemination policy: trial results	#31a	Plans for investigators and sponsor to communicate trial results to participants, healthcare professionals, the public, and other relevant groups (eg, via publication, reporting in results databases, or other data sharing arrangements), including any publication restrictions	n/a
Dissemination policy: authorship	#31b	Authorship eligibility guidelines and any intended use of professional writers	n/a
Dissemination policy: reproducible research	#31c	Plans, if any, for granting public access to the full protocol, participant-level dataset, and statistical code	n/a

Appendices

1	Informed consent	#32	Model consent form and other related documentation	n/a
2	materials		given to participants and authorised surrogates	
3				
4				
5	Biological specimens	#33	Plans for collection, laboratory evaluation, and storage of	n/a
6			biological specimens for genetic or molecular analysis in	
7			the current trial and for future use in ancillary studies, if	
8			applicable	
9				
10				

11 None The SPIRIT Explanation and Elaboration paper is distributed under the terms of the Creative
12 Commons Attribution License CC-BY-NC. This checklist can be completed online using
13 <https://www.goodreports.org/>, a tool made by the [EQUATOR Network](#) in collaboration with
14 [Penelope.ai](#)
15
16
17
18
19
20
21
22
23
24
25
26
27
28
29
30
31
32
33
34
35
36
37
38
39
40
41
42
43
44
45
46
47
48
49
50
51
52
53
54
55
56
57
58
59
60