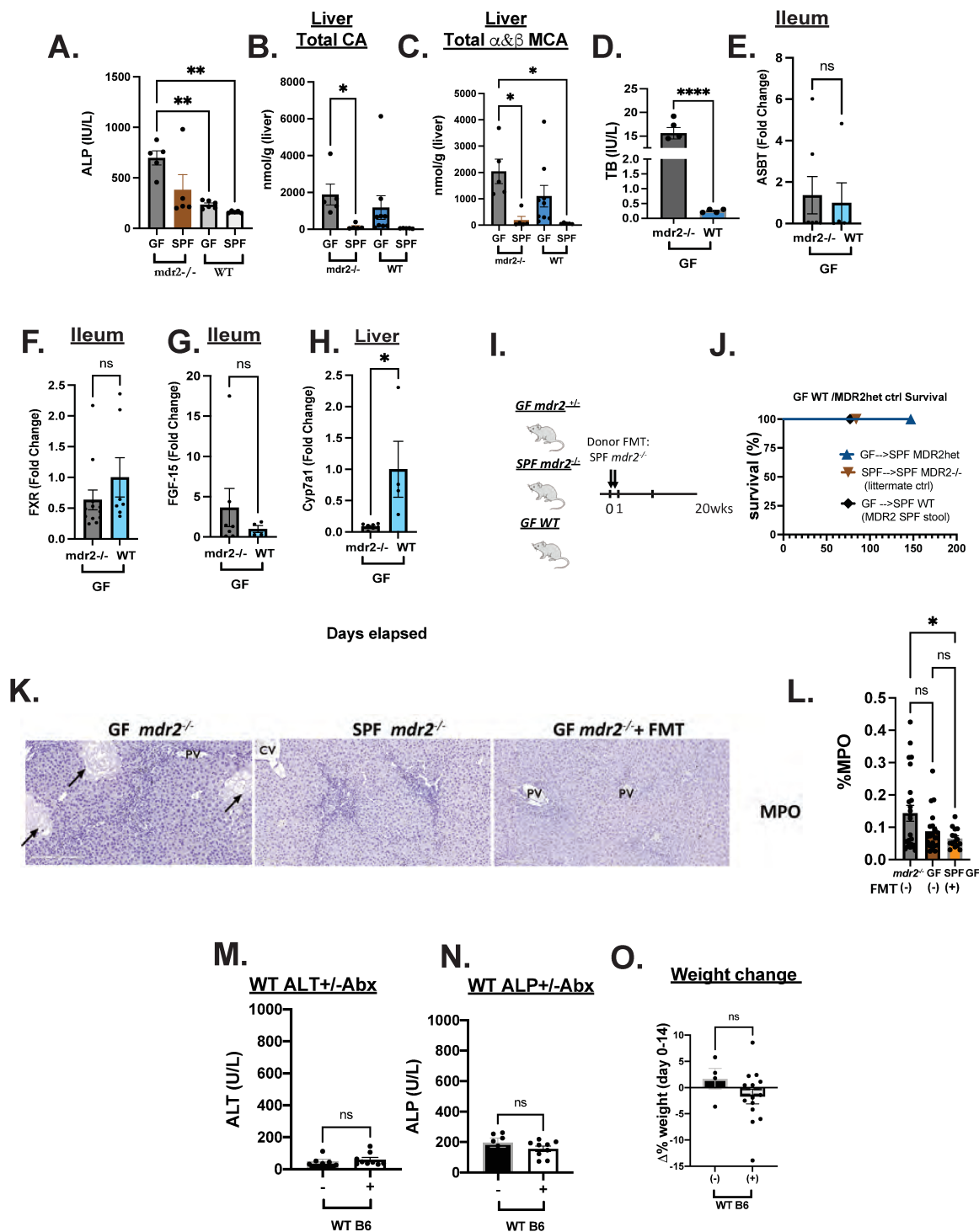
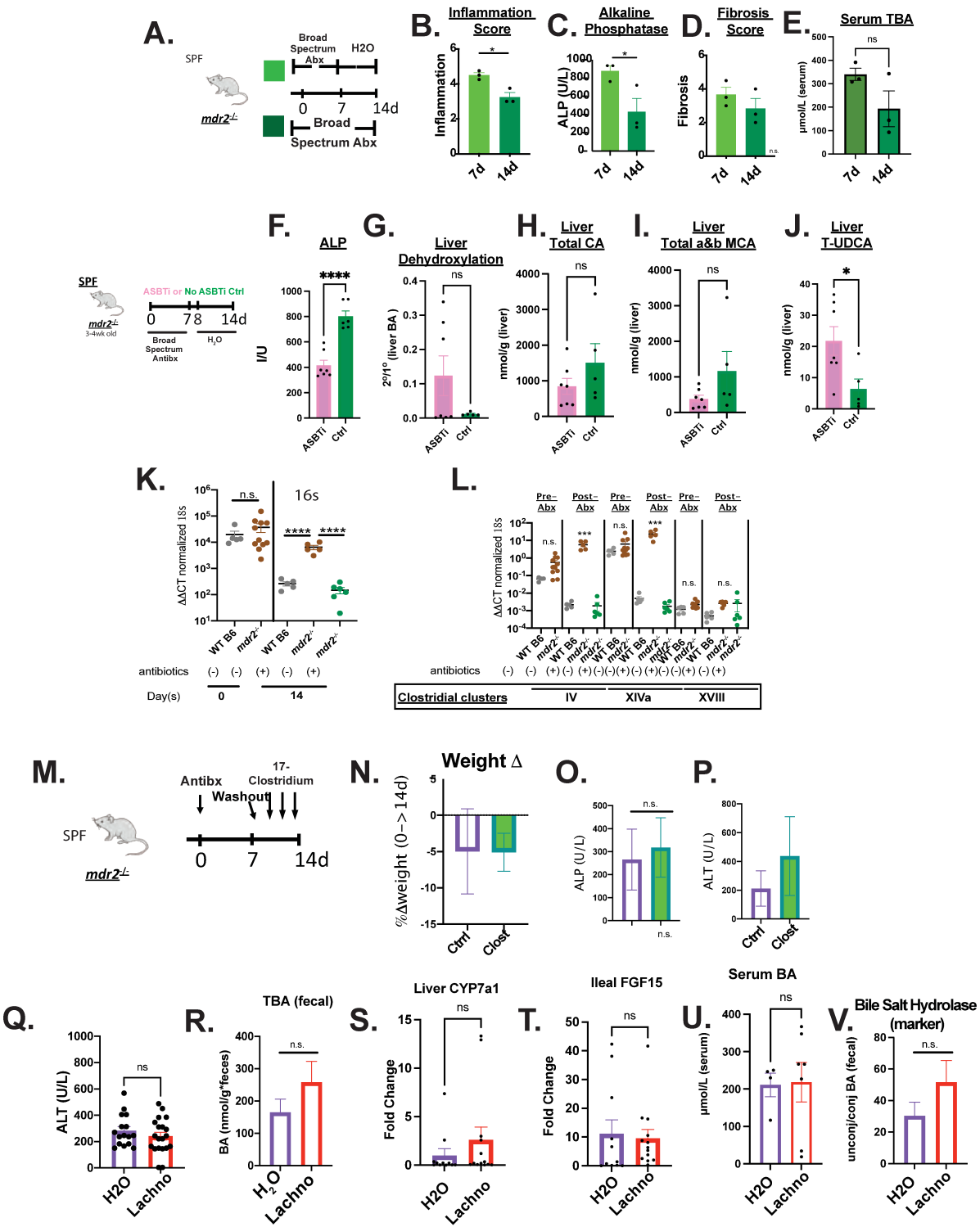


Supplemental Figure 1



Supplemental Figure 2



Supplementary Figure 3

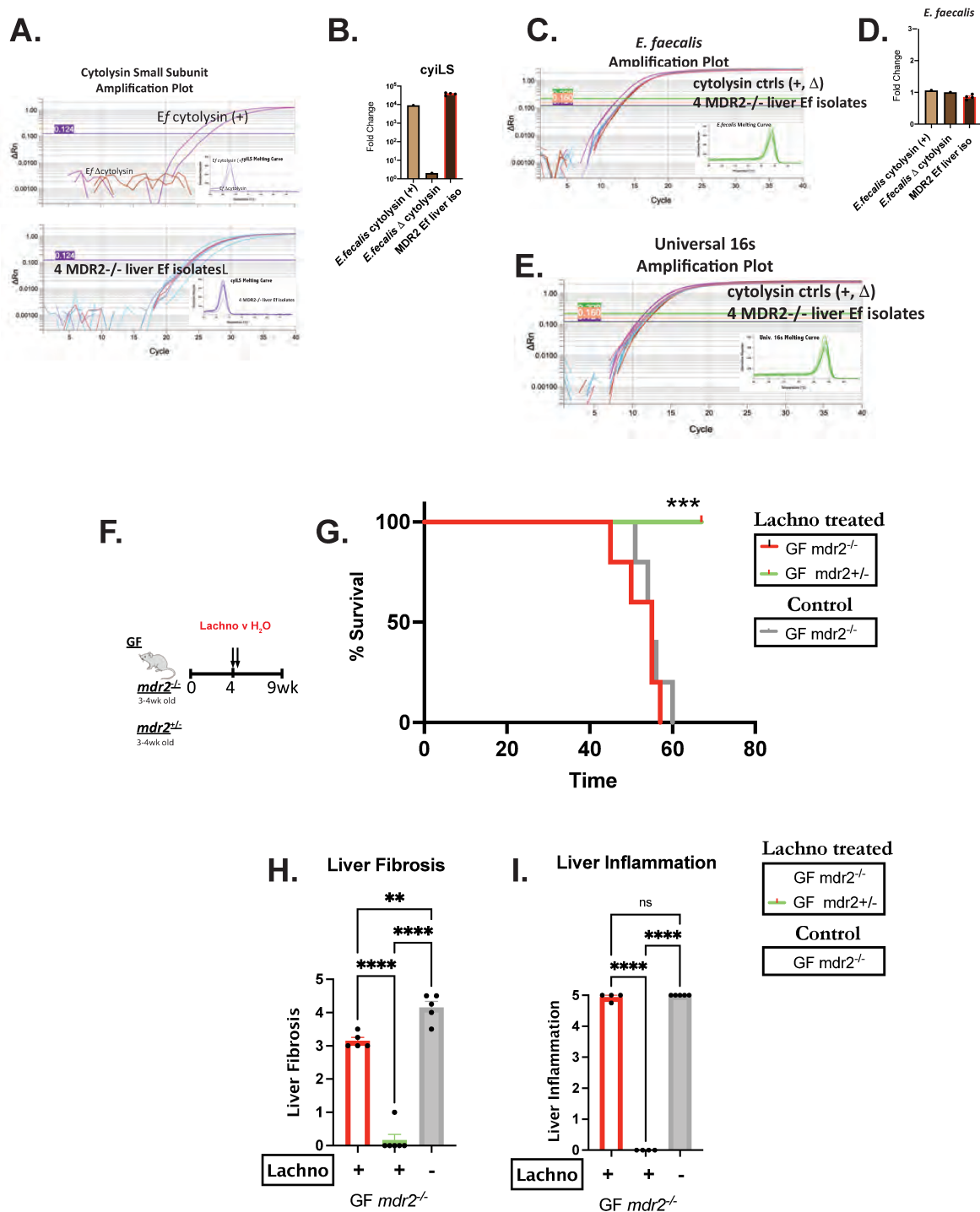


Table S1: Primers for qPCR

Taqman Probes (mouse)	Cat #	
MCP-1	Mm00441242_m1	
Lcn-2	Mm01324470_m1	
Col1a1	Mm00801666_g1	
TIMP-1	Mm01341361_m1	
SYBR green primers (mouse)	Forward	Reverse
iNOS2	GTGTTCCACCAGGAGATGTTG	CTCCTGCCCACTGAGTTCGTC
IL-6	AGTTGCCTTCTTGGGACTGA	TCCACGATTTCCCAGAGAAC
TNF-a	CTGGGACAGTGACCTGGACT	GCACCTCAGGGAAGAGTCTG
18s	ggtaaccggtgaaccccat	caacgcaagcttatgaccg

18s was used as reference gene. MCP-1, Monocyte Chemoattractant Protein-1; Lcn-2, Lipocalin-2; Col1a1, collagen 1a1; Timp1, tissue inhibitor of metalloproteinases 1; iNos-2, inducible nitric oxide-2; IL-6, Interleukin-6; TNF-a, Tumor Necrosis Factor-alpha.