

SUPPLEMENTARY MATERIALS

Trends in colorectal cancer surgical resection rates during the screening era: a retrospective study in Italy

Manuel Zorzi¹, Lucia Calciano¹, Nicola Gennaro¹, Laura Memo¹, Silvia Rizzato¹, Carmen Stocco¹, Emanuele Damiano Urso², Silvia Negro², Gaya Spolverato², Salvatore Pucciarelli², Marta Sbaraglia³, Stefano Guzzinati¹

¹Epidemiological Department, Azienda Zero, Padova, Italy

²Department of Surgical, Oncological and Gastroenterological Sciences (DiSCOG), Università degli Studi di Padova, Padova, Italy

³Department of Medicine (DIMED), Pathology and Cytopathology Unit, Università degli Studi di Padova, Padova, Italy

Corresponding author:

Lucia Calciano

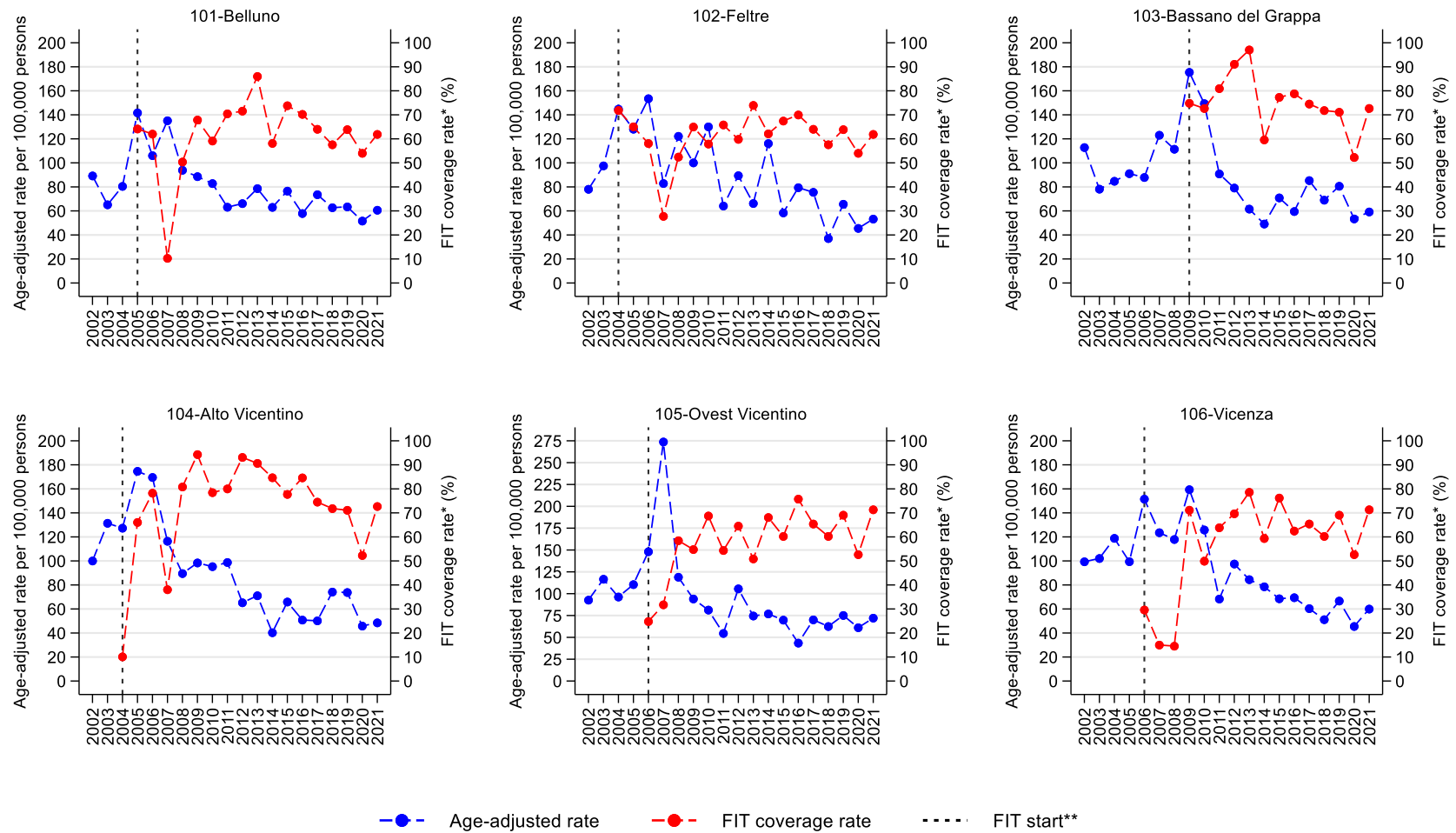
lucia.calciano@azero.veneto.it

Table S1. Annual coverage rate* (%) of the FIT-based screening programme (2002-2021) by local health units (LHUs). LHUs included in ITS analysis are in bold.

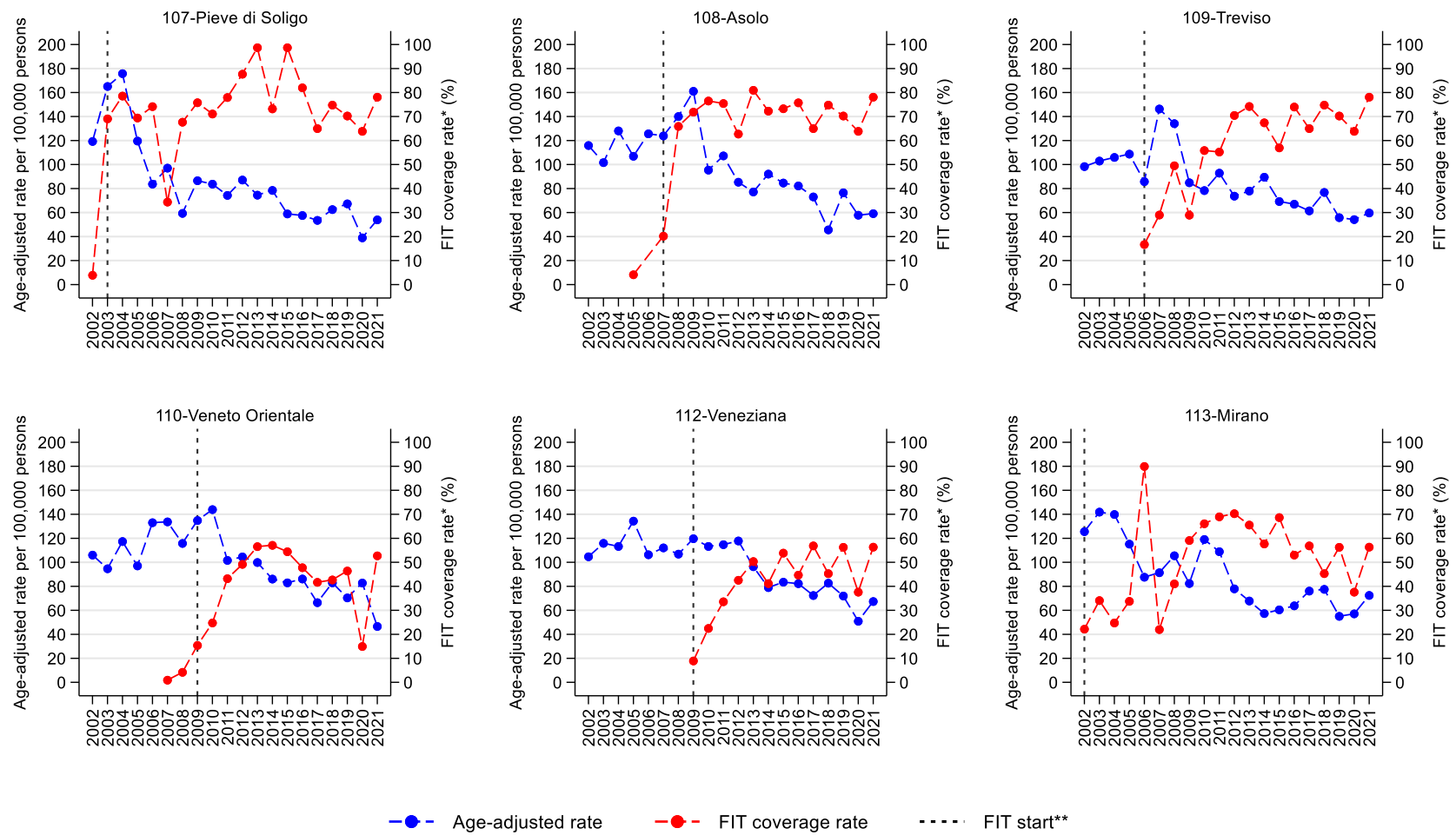
LHU	2002	2003	2004	2005	2006	2007	2008	2009	2010	2011	2012	2013	2014	2015	2016	2017	2018	2019	2020	2021	FIT start **
101-Belluno	-	-	-	64.1	62.0	10.3	50.4	67.9	59.1	70.5	71.6	86.0	58.1	73.8	70.2	64.0	57.6	63.9	54.0	61.9	2005
102-Feltre	-	-	71.8	65.0	58.1	27.8	52.4	65.0	57.9	65.8	59.8	74.0	62.1	67.5	70.0	64.0	57.6	63.9	54.0	61.9	2004
103-Bassano del Grappa	-	-	-	-	-	-	-	74.8	72.7	80.9	91.1	97.0	59.6	77.3	78.8	74.5	71.8	71.1	52.3	72.7	2009
104-Alto Vicentino	-	-	10.1	66.1	78.2	38.0	80.8	94.3	78.4	80.0	93.1	90.6	84.7	77.7	84.6	74.5	71.8	71.1	52.3	72.7	2004
105-Ovest Vicentino	-	-	-	-	24.8	31.8	58.5	54.8	68.7	54.4	64.5	50.9	68.1	60.2	75.8	65.4	60.2	69.1	52.6	71.3	2006
106-Vicenza	-	-	-	-	29.6	15.0	14.5	71.1	49.9	63.8	69.7	78.6	59.4	76.2	62.5	65.4	60.2	69.1	52.6	71.3	2006
107-Pieve di Soligo	3.9	69.1	78.6	69.4	74.2	34.4	67.7	75.8	71.1	78.0	87.7	98.7	73.2	98.7	82.0	65.0	74.8	70.3	63.9	78.1	2003
108-Asolo	-	-	-	4.1	0.0	20.2	65.9	71.9	76.5	75.4	62.7	81.0	72.3	73.3	75.7	65.0	74.8	70.3	63.9	78.1	2007
109-Treviso	-	-	-	-	16.7	29.0	49.5	28.9	55.9	55.3	70.5	74.2	67.4	57.0	74.0	65.0	74.8	70.3	63.9	78.1	2006
110-Veneto Orientale	-	-	-	-	-	0.9	4.2	15.4	24.8	43.2	49.2	56.6	57.1	54.4	47.8	41.7	42.7	46.4	15.0	52.7	2009
112-Veneziana	-	-	-	-	-	-	-	8.9	22.5	33.6	42.5	50.4	41.2	53.9	44.7	56.9	45.3	56.3	37.6	56.3	2009
113-Mirano	22.2	34.1	24.8	33.8	90.0	22.0	41.0	59.1	66.1	69.0	70.3	65.6	57.7	68.7	53.0	56.9	45.3	56.3	37.6	56.3	2002
114-Chioggia	-	-	-	3.2	9.1	5.2	31.9	23.1	23.2	35.4	21.3	31.5	44.9	67.4	29.1	56.9	45.3	56.3	37.6	56.3	2006
115-Alta Padovana	-	-	-	0.3	13.3	0.0	3.6	20.0	38.1	67.5	66.8	67.2	58.4	66.6	68.5	52.8	55.3	51.0	47.3	51.7	2006
116-Padova	-	-	-	-	-	-	40.0	17.1	53.3	58.2	62.2	49.5	52.9	43.9	55.0	52.8	55.3	51.0	47.3	51.7	2008
117-Este	-	-	-	-	36.1	6.6	17.7	32.7	44.1	34.4	52.3	55.6	44.0	71.7	58.8	52.8	55.3	51.0	47.3	51.7	2006
118-Rovigo	-	-	-	5.9	2.6	14.2	42.6	56.1	58.4	82.2	70.5	57.7	68.8	56.1	59.7	55.8	65.0	55.6	60.0	56.1	2005
119-Adria	-	-	-	-	-	-	-	54.9	66.7	54.4	79.8	65.6	67.0	61.3	70.7	55.8	65.0	55.6	60.0	56.1	2009
120-Verona	-	0.5	1.5	1.1	10.8	19.3	57.2	78.4	45.5	56.5	42.8	24.4	48.5	13.4	37.6	56.3	60.6	56.2	19.7	87.1	2006
121-Legnago	-	-	-	26.3	58.6	25.1	50.9	52.4	29.3	11.9	58.6	55.2	90.2	51.9	89.9	56.3	60.6	56.2	19.7	87.1	2005
122-Bussolengo	-	-	10.3	39.9	58.8	20.0	67.3	63.3	66.8	51.9	57.4	71.6	50.1	73.8	66.5	56.3	60.6	56.2	19.7	87.1	2004

*The coverage rate was calculated as the ratio of the number of subjects who received FIT to the total number in the target population.
**FIT start indicates the year when FIT was implemented in each LHU, which was defined as the first year in which the annual coverage rate of FIT is greater than or equal to 5%.

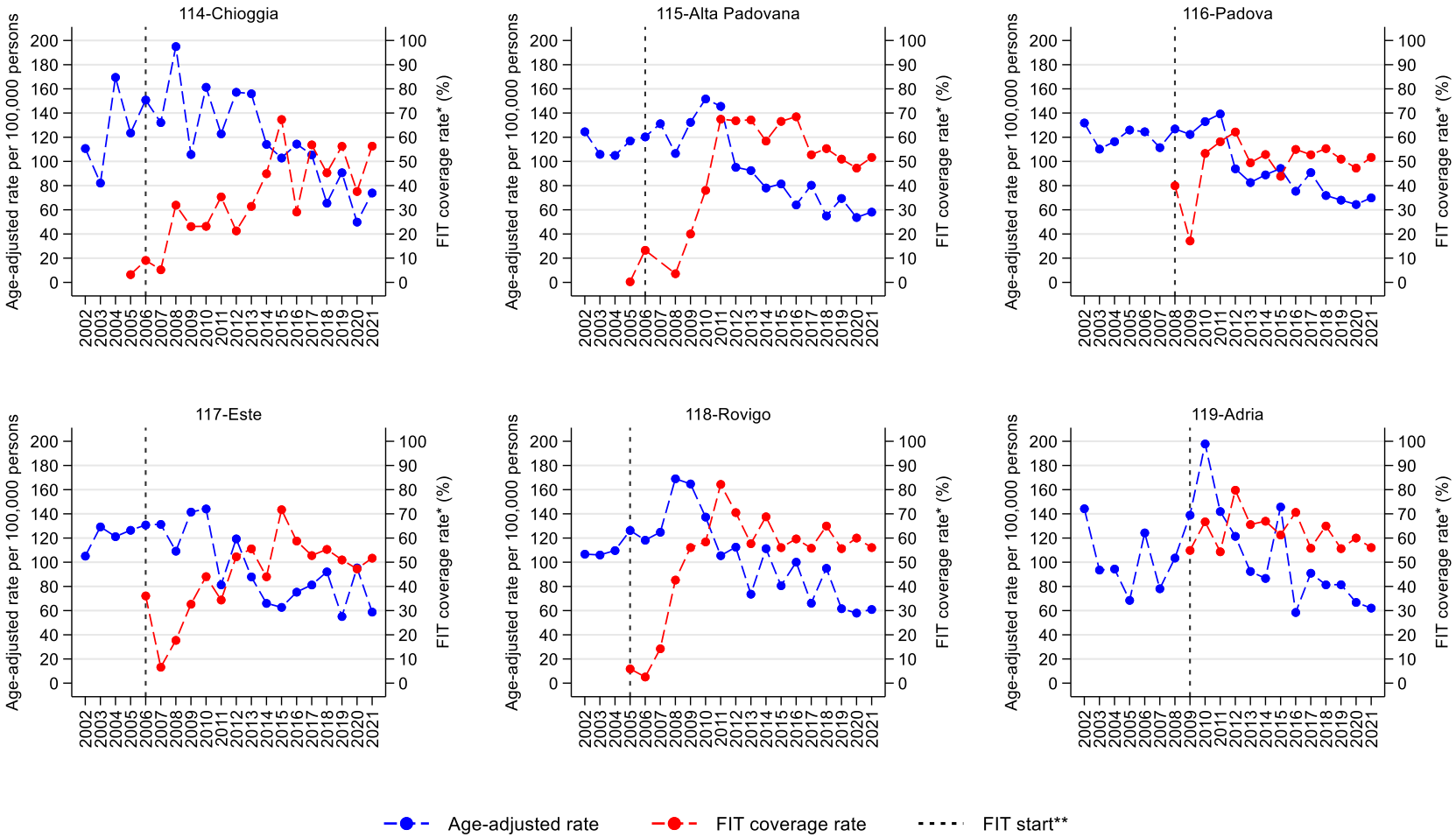
Figure S1. Target population (50-69 yrs): Colorectal cancer surgical resection age-adjusted rate and annual coverage rate* (%) of the FIT-based screening programme (2002-2021) by local health units (LHUs).



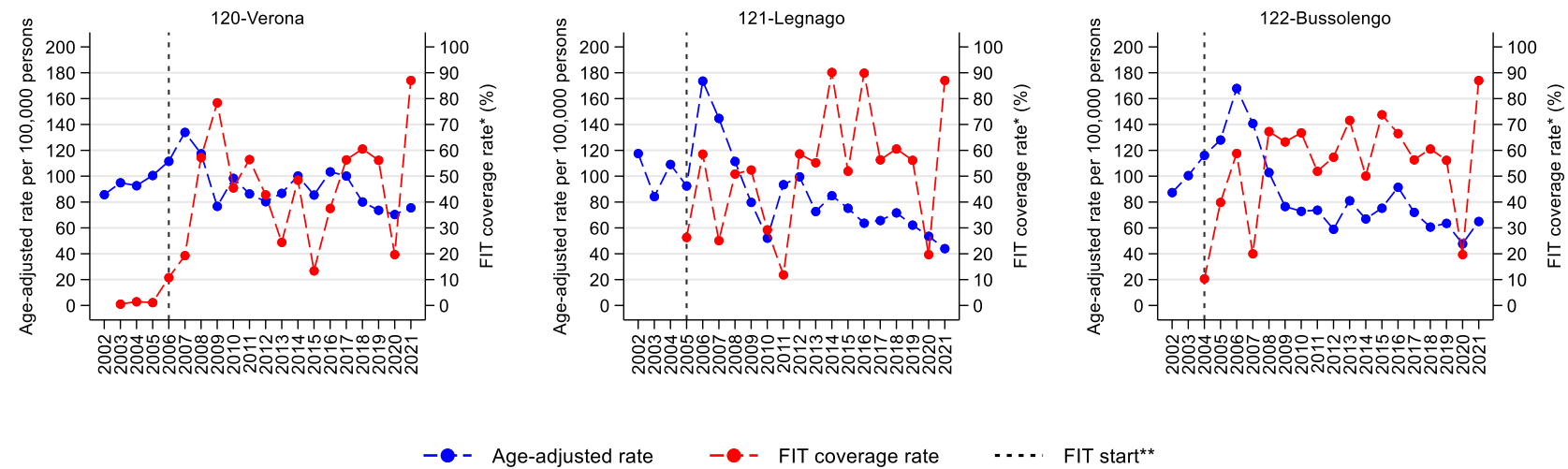
(Continued)



(Continued)



(Continued)



*The coverage rate was calculated as the ratio of the number of subjects who received FIT to the total number in the target population.

**FIT start indicates the year when FIT was implemented in each LHU, which was defined as the first year in which the annual coverage rate of FIT is greater than or equal to 5%.