



OPEN ACCESS

# Pharmacokinetics and tolerability of intranasal or intravenous administration of nalbuphine in infants

Miriam Pfiffner ,<sup>1</sup> Verena Gotta,<sup>2</sup> Marc Pfister,<sup>2</sup> Priska Vonbach,<sup>3</sup> Eva Berger-Olah<sup>4</sup>

► Additional supplemental material is published online only. To view, please visit the journal online (<http://dx.doi.org/10.1136/archdischild-2022-323807>).

<sup>1</sup>Hospital Pharmacy, University Children's Hospital Zurich, Zurich, Switzerland

<sup>2</sup>Pediatric Pharmacology and Pharmacometrics, University of Basel Children's Hospital, Basel, Switzerland

<sup>3</sup>PEDeus, a subsidiary of the University Children's Hospital Zurich, Zurich, Switzerland

<sup>4</sup>Emergency Unit, University Children's Hospital Zurich, Zurich, Switzerland

## Correspondence to

Miriam Pfiffner, Hospital Pharmacy, Universitäts-Kinderspital Zürich, Zurich 8032, Switzerland; [miriam.pfiffner@kispi.uzh.ch](mailto:miriam.pfiffner@kispi.uzh.ch)

MP and VG contributed equally.

Received 8 January 2022

Accepted 11 August 2022

Published Online First

13 September 2022

## ABSTRACT

**Objectives** Intranasal nalbuphine could be a safe, efficacious and non-invasive alternative to parenteral pain medication in infants. We aimed to assess pharmacokinetics (PK) and tolerability of intranasal and intravenous nalbuphine administration in infants.

**Methods** Prospective open-label study including infants 1–3 months of age admitted to the emergency department, receiving nalbuphine for procedural pain management. Patients were alternately allocated to a single nalbuphine dose of 0.05 mg/kg intravenously or 0.1 mg/kg intranasally. Nalbuphine PK samples were collected 15, 30 and 120–180 min after dosing. Area under the concentration time curve ( $AUC_{0-T_{last}}$ ) was calculated by non-compartmental analysis (NCA) and compared by Wilcoxon test. Neonatal Infant Pain Score was assessed during nalbuphine administration and the following interventions: venous access, urinary catheterisation, lumbar puncture.

**Results** Out of 52 study subjects receiving nalbuphine, 31 were eligible for NCA (11 intravenous, 20 intranasal). Median  $AUC_{0-T_{last}}$  after 0.05 mg/kg intravenously was 8.7 (IQR: 8.0–18.6)  $\mu\text{g}\times\text{L}/\text{hour}$  vs 7.6 (5.4–10.4)  $\mu\text{g}\times\text{L}/\text{hour}$  after intranasal administration of 0.1 mg/kg ( $p=0.091$ ). Maximum serum concentration ( $C_{max}$ ) was observed 30 min after intranasal administration (3.5–5.6  $\mu\text{g}/\text{L}$ ). During intravenous and intranasal nalbuphine administration, mild to no pain was recorded in 71% and 67% of study subjects, respectively.

**Conclusion** This is the first study investigating intranasal administration of nalbuphine in infants suggesting an intranasal bioavailability close to 50%. Non-invasive intranasal application was well tolerated. Additional studies are warranted to optimise dosing and timing of interventions as  $C_{max}$  is delayed by half an hour after intranasal administration.

**Trial registration number** NCT03059511.

## INTRODUCTION

Nalbuphine, an opioid analgesic agent, is often used to treat moderate to severe pain in children.<sup>1–4</sup> In the USA, it is licensed for adults only; in the UK, it is not licensed and in some European countries for children aged over 1.5 years at a dose of 0.1–0.2 mg/kg (maximal 10 mg) intramuscularly, intravenously or subcutaneously every 3–6 hours.<sup>1 5 6</sup> However, nalbuphine is frequently used in infants and neonates as it shows good analgesia and a lower ceiling effect on respiratory depression in comparison with other opioid analgesic agents due to its unique pharmacological properties as a  $\mu$ -receptor antagonist/ $\kappa$ -receptor agonist.<sup>1–4 7</sup>

## WHAT IS ALREADY KNOWN ON THIS TOPIC

- ⇒ Nalbuphine is frequently used in infants and neonates but it is only licensed for parenteral use.
- ⇒ Intranasal nalbuphine delivery could be a safe, efficacious and non-invasive alternative to parenteral use in children, especially for infants in the acute care setting.
- ⇒ There are few publications describing intranasal nalbuphine administration, but pharmacokinetic data for the intranasal route of administration are completely lacking.

## WHAT THIS STUDY ADDS

- ⇒ This is the first study reporting clinical pharmacokinetics of intranasal nalbuphine in infants 1–3 months of age.
- ⇒ We observed similar exposure coverage following single administration of 0.1 mg/kg intranasal and 0.05 mg/kg intravenous nalbuphine, suggesting an intranasal bioavailability of 50%.
- ⇒ Intranasal administration was safe and well tolerated in 67% of patients.

## HOW THIS STUDY MIGHT AFFECT RESEARCH, PRACTICE OR POLICY

- ⇒ This study provides first evidence for feasibility and safety of intranasal nalbuphine administration as an alternative to parenteral use in infants 1–3 months.
- ⇒ Intranasal nalbuphine may offer an additional non-invasive option for pain treatment in infants.
- ⇒ Additional studies focusing on optimal dosing and timing of painful interventions following intranasal administration can be designed based on results of this study.

Intranasal nalbuphine delivery could be a safe, efficacious and non-invasive alternative to parenteral use in children, especially for infants in the acute care setting who are not eligible for fentanyl. The lowest body weight limit for intranasal fentanyl use is 10 kg, due to the supposed risk of potentially severe adverse drug reactions such as apnoea.<sup>8–10</sup> Main advantages of intranasal drug delivery are ease of administration, high patient and provider satisfaction, expected rapid onset of action, the avoidance of gastrointestinal and hepatic first-pass effects and ease of use in patients with nausea and vomiting.<sup>11–13</sup> Although nalbuphine has been approved more than 20 years ago,



© Author(s) (or their employer(s)) 2023. Re-use permitted under CC BY-NC. No commercial re-use. See rights and permissions. Published by BMJ.

**To cite:** Pfiffner M, Gotta V, Pfister M, et al. *Arch Dis Child* 2023;**108**:56–61.

pharmacokinetic (PK) data on the drug remain limited, especially in children.<sup>2–4 12 14–16</sup> The drug is mainly hepatically metabolised involving several phase I and phase II pathways.<sup>17</sup> As a drug with high hepatic extraction, substantial and variable first-pass metabolism limits its oral use.<sup>13 15</sup> Half-life in adults is 2.5–3 hours<sup>1</sup> and similar in children.<sup>3 7</sup> There are few publications describing intranasal nalbuphine administration, but PK data for the intranasal route of administration are completely lacking.<sup>18 19</sup>

The primary objective of this study was to assess PK of nalbuphine in infants 1–3 months of age after single intravenous (0.05 mg/kg) and intranasal (0.1 mg/kg) application, respectively. The used intravenous dosing differs from the above-discussed licensed dosing because the Swiss medical authority did not approve to study 0.1 mg/kg intravenously and 0.2 mg/kg intranasally in infants <3 months due to safety concerns.

The secondary objective of the study was to assess tolerability of intranasal application, pain control and safety after single intravenous (0.05 mg/kg) and intranasal (0.1 mg/kg) administration.

## METHODS

### Trial design and participants

We performed a prospective, single centre, open-label PK study, conducted in the interdisciplinary emergency department of the University Children's Hospital Zurich between 2017 and 2018. Infants aged 29 days–3 months with minimum body weight of 3.0 kg and fever without a source requiring a partial or full sepsis work-up according to our clinical practice guideline were eligible.<sup>20</sup> In febrile infants older than 3 months, the decision of diagnostic and painful procedures is based on the clinical condition of the patient and may show a big variety. Therefore, to ease inclusion criteria, we decided to include infants up to 3 months undergoing the same diagnostic and interventional procedures according to our clinical practice guideline. Main exclusion criteria were premature birth, kidney or liver disease, chronic illness, documented previous adverse reaction to nalbuphine, treatment with other central nervous system depressants within 5 days prior to study, and epistaxis or nose trauma (only for the intranasal application).

### Interventions

Following informed consent of the parents, included patients were alternately allocated to either 0.05 mg/kg intravenous (bolus) or 0.1 mg/kg intranasal nalbuphine (Nalbuphin OrPha, 20 mg/2 mL OrPha Swiss, Kuesnacht, Switzerland); alternation could be switched to balance the number of patients in the two groups. Intranasal dose was doubled compared with intravenous because we expected nalbuphine intranasal bioavailability between 50% and 80%, according to lipophilicity and molecular weight.<sup>21 22</sup> Using a 1 mL syringe, the corresponding volume of 0.02–0.1 mL was withdrawn and administered. This volume is well within the range of 0.025–0.20 mL considered suitable for nasal drug delivery as associated with minimal outflow or gastrointestinal absorption through mucociliary clearance.<sup>21 23 24</sup> In the intravenous administration group, painful interventions for medical work-up were performed 5 min before nalbuphine administration (venous access for blood sampling) and 20 and 35 min after drug administration (urinary catheterisation and lumbar puncture). A nasal device (Mucosal Atomization Device 300 Teleflex, USA) was used for intranasal administration. In the intranasal administration group, venous access was performed 5 min after nalbuphine administration, urinary catheterisation after 20 min and lumbar puncture after 30 min successively. Blood

samples with a minimum amount of 0.5 mL blood to measure nalbuphine serum concentrations were obtained from placed intravenous access in both groups 15, 30 and 120–180 min after drug administration. The same intravenous access was used to administer nalbuphine intravenously and to collect the blood samples. Tolerability of drug administration was assessed by the Neonatal Infant Pain Score (NIPS)<sup>25</sup> during intravenous and intranasal nalbuphine administration. Pain control was also assessed by NIPS during each intervention. As safety endpoints, oxygen saturation, heart rate and, if feasible, blood pressure were recorded at baseline and during nalbuphine administration, venous access, PK sampling, urinary catheterisation and lumbar puncture. Adverse events were recorded at any time.

### Serum drug analysis

Nalbuphine serum levels were measured using liquid chromatography coupled to tandem mass spectrometry. The lower limit of quantification was 0.1 µg/L and the upper limit of quantification 2500 µg/L. Intraday and interday assay precision was <8.15% and <5.3%, respectively.

### PK analysis

Data were analysed by non-compartmental analysis (NCA). NCA included only patients for whom all three serum concentration measurements were available. Implausible high serum concentrations were defined as >60 µg/L (corresponding to a theoretical distribution volume of <0.83 L/kg, that is, much smaller than a previously reported distribution volume of  $3.62 \pm 1.77$  L/kg in children 1.5–5 years)<sup>2</sup> or rising concentrations after intravenous administration, were excluded from the analysis. Those values were suspected to be related to protocol errors like missed line flushing between drug administration and blood withdrawal in the intravenous group, an accidental sample switch or a dose calculation error.

### Sample size calculation

Assuming an interindividual variability (coefficient of variation) in the area under the concentration time curve ( $AUC_{0-\infty}$ ) of 68%–78% in this age group,<sup>15</sup> a sample size of 19 patients per group (rounded up to 21 to account for possible drop-out) was deemed necessary to demonstrate a significant mean AUC difference between the groups outside the 80%–125% interval, with a power of at least 80% (t-test for mean difference, 5% significance level).<sup>26</sup>

### Non-compartmental analysis

NCA was conducted using package NonCompart in R (V3.6.1, R Core Team, 2019); for intranasal data, the initial concentration at time=0 min was set to 0 µg/L. Nalbuphine  $AUC_{0-T_{last}}$  was calculated according to the linear trapezoidal method with linear interpolation; the last two decreasing concentrations were assumed to reflect the terminal elimination phase. Maximum measured serum concentration ( $C_{max}$ ) and time to maximum concentration for intranasal ( $t_{max}$ ) were extracted for each patient.  $AUC_{0-\infty}$  and % of  $AUC_{0-T_{last}}/AUC_{0-\infty}$  were only calculated for the intravenous group, as a terminal elimination phase could not be observed for all intranasal concentration profiles. All variables were summarised by median and IQR, and compared between groups by non-parametric Wilcoxon test (instead of t-test used for sample size calculation above, due to remaining non-normal distribution after log-transformation).

**Table 1** Characteristics of 31 patients included in non-compartmental analysis (NCA) (left) and of all 52 patients who received nalbuphine (right)

Analysis	NCA, intravenous	NCA, intranasal	All, intravenous	All, intranasal
Number of patients	11	20	26	26
Gender, male	7 (64%)	13 (65%)	16 (62%)	16 (62%)
Age (days)	42 (37–76)	55 (38–63)	56 (40–70)	55 (39–63)
Weight (kg)	4.7 (4.3–6.2)	5.0 (4.6–5.6)	5.0 (4.5–5.9)	5.0 (4.7–5.5)

Continuous variables are given as median (IQR), categorical variables as number (per cent).

### Tolerability of intranasal application and pain control

NIPS were categorised as no/mild (0–2), moderate (3–4) and severe (>4) pain, and were summarised as number (%). Tolerability was evaluated as number (%) with mild NIPS during drug administration. Pain control was evaluated as number (%) of patients with severe NIPS during interventions (establishment of venous access, urinary catheterisation and lumbar puncture).

### Safety (adverse events and vital signs)

Vital signs were collected at baseline and during each intervention. Other reported adverse events were categorised as mild or moderate (by the treating physician) or serious in case of death, life-threatening events, associated (prolonged) hospitalisation, disability or permanent damage, or required intervention to prevent permanent impairment or damage. Each adverse event was assessed for causality (unrelated or related to nalbuphine) by the treating physician. Events were considered as unrelated if the event started in no temporal relationship to nalbuphine administration or if the event could be definitely explained by underlying diseases or other conditions.

## RESULTS

### Data

A total of 54 patients were included in the study. Patient characteristics are given in table 1. In 40 patients (19 intravenous/21 intranasal), all three planned nalbuphine concentration measurements were obtained. According to criteria specified above, concentrations from nine study subjects (eight intravenous/one intranasal) were excluded from the PK analyses: three concentrations because of rising values after intravenous administration and six because of implausible concentrations. The medical record of two patients (one intravenous/one intranasal) revealed an accidental (10-fold) overdose. Therefore, a total of 31 patients were eligible for primary PK analysis (figure 1).

A total of 52 patients received nalbuphine (26 intravenous/26 intranasal) and were available for tolerability, pain control and safety analysis.

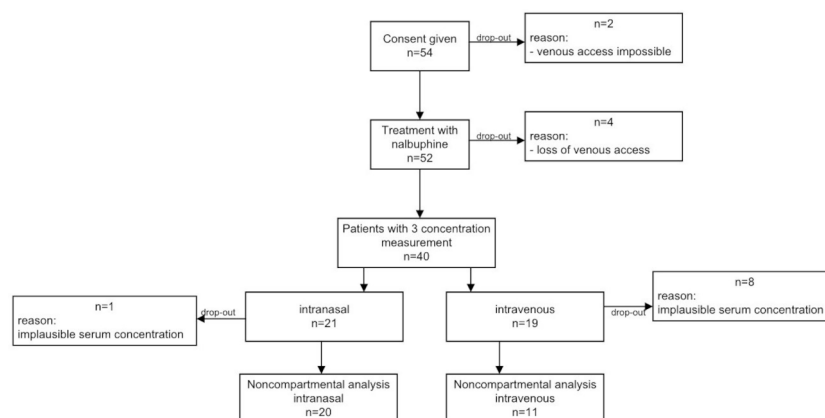
### Pharmacokinetics

Serum concentration time profiles are shown in figure 2A,B. Calculated NCA PK parameters are summarised in table 2. No significant difference for  $AUC_{0-T_{last}}$  could be found between the intranasal and intravenous group ( $p=0.091$ ), and the median intranasal  $AUC_{0-T_{last}}$  (7.6  $\mu\text{g/L/hour}$ ) was well within an 80%–125% interval of intravenous median  $AUC_{0-T_{last}}$  (8.7  $\mu\text{g/L/hour}$ , 80%–125% interval=7.0–10.9  $\mu\text{g/L/hour}$ ).  $C_{max}$  and  $t_{max}$  were expectedly significantly different ( $p=0.014$  and  $p<0.001$ , respectively).

### Tolerability of intranasal application and pain control

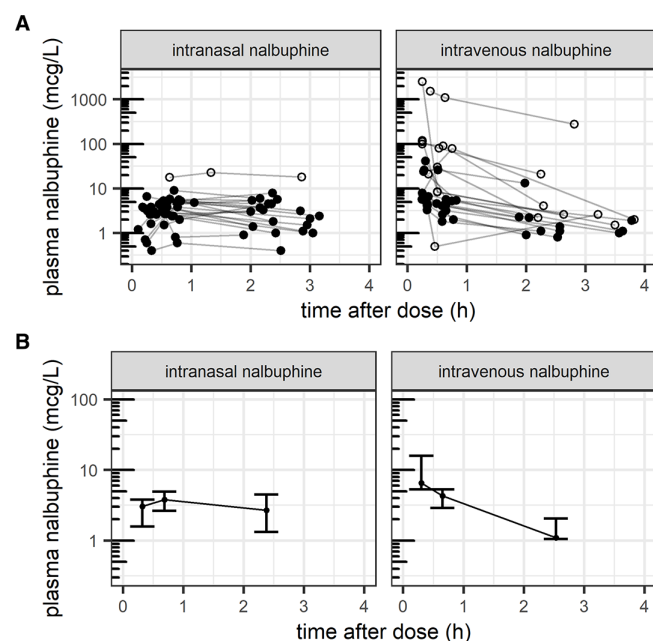
52 patients received nalbuphine, 35 of them (14 intravenous/21 intranasal) were eligible for tolerability assessment due to available recorded NIPS during drug administration. Mild to no pain was recorded in 71% during intravenous and 67% during intranasal nalbuphine administration.

Out of 52 patients having received nalbuphine, recorded NIPS were available for 40 patients (19 intravenous, 21 intranasal) during placement of peripheral intravenous access, 42 patients (22 intravenous, 20 intranasal) during urinary catheterisation and 25 patients (11 intravenous, 14 intranasal) during lumbar puncture. NIPS measurements are summarised in figure 3 (detailed numbers: see online supplemental table). Severe pain was recorded in the intravenous (intranasal) study group during insertion of peripheral intravenous access in 42% (62%), during urinary catheterisation in 45% (50%) and during lumbar puncture in 82% (57%) of study subjects, respectively.



**Figure 1** Flow chart: Implausible serum concentrations were defined as implausible high serum concentrations (>60  $\mu\text{g/L}$ , inclusive expected accidental overdoses) or rising concentrations after intravenous administration.





**Figure 2** Illustration of (A) measured pharmacokinetic profiles with outliers (open circles) from  $n=40$  patients with all three concentration measurements and (B) summary pharmacokinetic profile showing median and IQR from  $n=31$  patients included in non-compartmental pharmacokinetic analysis.

### Safety (adverse events and vital signs)

Oxygen saturation, heart rate and blood pressure are summarised graphically measured in all 52 patients and as mean change from baseline with 95% CI in online supplemental figure. No measurement required medical intervention.

No serious adverse event was noted. Five mild adverse events, which were assessed related to nalbuphine, were reported: two patients vomited, one patient became pale and two patients were sleepy and dizzy. None of these patients had implausible high serum nalbuphine concentrations. The two patients with documented accidental overdoses had mild to moderate adverse events, which were classified as likely related to nalbuphine by the treating physician. The patient in the intranasal study group suffered bradycardia (6 hours after nalbuphine administration) and self-limiting apnoea. The other patient (intravenous group) slept for an unusually long time.

**Table 2** NCA: pharmacokinetic parameters of nalbuphine after 0.05 mg/kg intravenously or 0.1 mg/kg intranasally

Variable	intravenous 0.05 mg/kg	Intranasal 0.1 mg/kg	P value*
AUC <sub>0-Last</sub> (µg×hour/L)	8.7 (8.0–18.6)	7.6 (5.4–10.4)	0.091
% of AUC <sub>0-infinity</sub>	85 (71–87)	NA	
T <sub>last</sub> (hours)	2.53 (2.02–3.07)	2.38 (2.16–2.85)	0.804
C <sub>max</sub> (µg/L)	6.5 (5.3–15.9)†	4.5 (3.5–5.6)	0.014
t <sub>max</sub> (min)	18 (17–19)†	37 (32–65)	<0.001

All variables are given as median (IQR).

T<sub>last</sub> was 2–3 hours after nalbuphine administration.

\*Wilcoxon test.

†C<sub>max</sub> after intravenous dose=first measured concentration (planned at 15 min post-dose) therefore t<sub>max</sub> intravenous~15 min.

AUC, area under the concentration time curve; C<sub>max</sub>, maximum serum concentration; NA, not available; NCA, non-compartmental analysis; t<sub>max</sub>, time to reach maximum serum concentration.

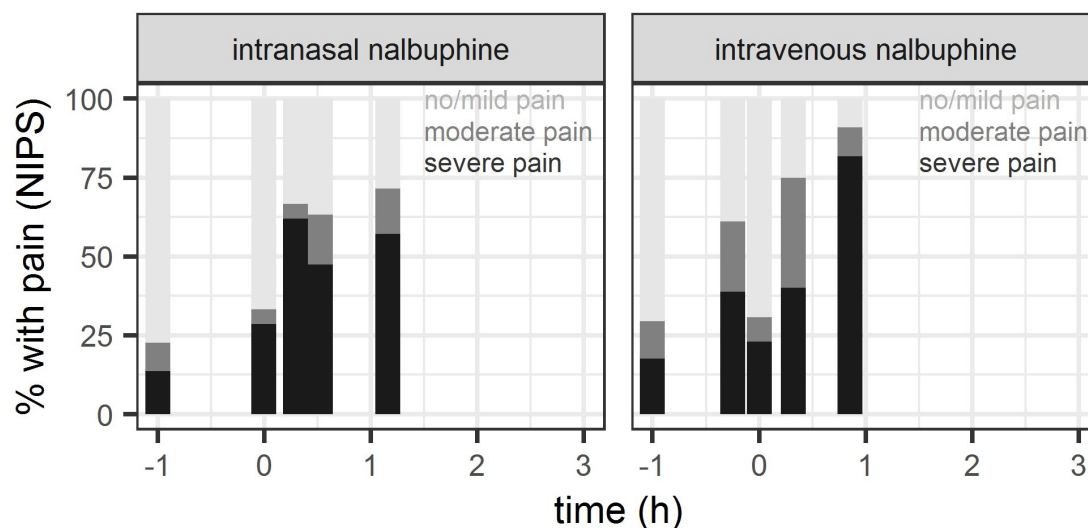
### DISCUSSION

This is the first study reporting clinical PK of intranasal nalbuphine in infants 1–3 months of age. We observed similar median AUC<sub>0-Last</sub> during the first 2.5 hours under studied doses, suggesting an intranasal bioavailability close to 50%. As expected, however, measured median C<sub>max</sub> was lower following intranasal compared with intravenous administration, with t<sub>max</sub> having occurred after the 15 min sample only (median measured t<sub>max</sub> close to 40 min). These different kinetic profiles may need to be considered for optimal timing of interventions.

Intranasal administration was overall well tolerated by the majority (67%) of patients recorded with mild to no pain only (NIPS <3), despite the low pH of 3.0–4.2 of the nalbuphine solution (the optimum pH for intranasal application is 4.5–6.5).<sup>21–24 27</sup> Furthermore, we were able to show that nalbuphine exhibits a good safety profile. No serious adverse event was noted despite two 10-fold overdoses, and generally only few mild to moderate adverse events occurred, which were still deemed related to nalbuphine. The delayed bradycardia observed in one of the patients (noted 6 hours after intranasal nalbuphine overdose) might be related to possible partial intestinal absorption, which is expected to be delayed during opioid exposure due to inhibition of gastric emptying.<sup>28</sup>

Given the relatively high proportion of patients with severe pain during urinary catheterisation and lumbar puncture (range across groups: 45%–82%), we hypothesise that dosages may need to be increased in practice to usual doses corresponding to 0.1–0.2 mg/kg intravenously,<sup>1</sup> compared with our studied doses of 0.05 mg/kg intravenously and 0.1 mg/kg intranasally. A target concentration under continuous infusion of 12 µg/L in children >1 years has been proposed by Bressolle *et al*<sup>3</sup> for postoperative pain treatment, and was achieved neither by our median measured C<sub>max</sub> of 4.5 µg/L after intranasal administration nor by our median concentration of 6.5 µg/L 15 min after intravenous administration. A complementary population PK/pharmacodynamic analysis of our study data predicts median C<sub>max</sub> of 17.9 µg/L (IQR: 7.5–32.8) after the intravenous dose of 0.05 mg/kg (at t=0 hour), and supports usefulness of intravenous nalbuphine doses of 0.1–0.2 mg/kg to exceed the proposed target concentration of 12 µg/L for at least 30 min following drug administration.<sup>29</sup> Consistent with these findings, model-based simulations suggest that the proportion of patients with severe procedure-related pain at 30 min may be reduced from approximately 40% (under 0.05 mg/kg intravenously) to ≤20% (under 0.1–0.2 mg/kg intravenously).<sup>29</sup> A comparable achievement of target concentrations and pain control after intranasal use would be expected only at an intranasal dose of 0.4 mg/kg according to model simulations.<sup>29</sup>

Our initial study doses of 0.1 mg/kg intravenous and 0.2 mg/kg intranasal nalbuphine were not approved by the Swiss health authority due to safety concerns in infants <3 months, although the licensed intravenous dose was 0.1–0.2 mg/kg, without a specified age limit in Switzerland at that time<sup>30</sup> (note: dose is limited to children over 1.5 years old now<sup>1</sup>). The study was performed at our high frequency emergency department (45 000 patients/year) and therefore safety measures differ from intensive care unit or anaesthesia department where continuous monitoring and observation of the patient can be provided. Nalbuphine was newly introduced for procedural pain management in this setting. A ‘low-dose’ nalbuphine was therefore expected to be better than current standard of care (glucose cotton swab, no pain medication) and as such, a careful dosing approach was ethically justifiable.



**Figure 3** Proportion of patients with NIPS classified as no/mild pain (NIPS <3), moderate (NIPS=3–4) or severe pain (NIPS >4), evaluated as indicator of pain control during interventions (establishment of venous (intravenous) access shortly before (intravenous group) and shortly after nalbuphine administration (intranasal group), respectively, urinary catheterisation and lumbar puncture) and as indicator of tolerance of nalbuphine administration. Baseline: NIPS assessment in the time between informed consent and first intervention (intranasal nalbuphine administration or venous access) plotted at time=-1h.

### Limitations

In 40 patients of 52 (19 intravenous/21 intranasal), all three planned nalbuphine concentration measurements were obtained. In the remaining 12 patients, we did not achieve to obtain all needed serum samples due to either loss of venous access or no return of blood from intravenous line. In the protocol, we decided not to insert another intravenous access or perform a puncture for blood sampling just for study purposes. We excluded a total of eight patients in the intravenous group from PK analysis due to implausible serum concentrations partly because rising concentrations were observed, which may be explained by accidental sample switch, and partly due to extremely high concentrations. We assumed that the latter was mainly related to the blood withdrawal, as blood samples were taken from the same intravenous access that was used for nalbuphine administration. If the nurse forgot to flush the intravenous access after intravenous nalbuphine administration, part of the nalbuphine dose may have entered the blood sample for serum concentration measurement, thus achieving an implausible high value. Another point which may have introduced some inaccuracy in dosing was the small drug volume (0.02–0.1 mL) administered. Unfortunately, we had to exclude two patients (one intravenous/one intranasal), due to an accidental (10-fold) overdose. The NIPS measured in this study is an indicator for pain or distress in infants aged less than 1 year, and uses body language to help us to understand if an infant is in pain. At this non-verbal age, infants cannot tell us if they are in pain, so we can use this scale only as a surrogate. It is possible that the NIPS was partly high simply because the infant was hungry, did not like its positioning or felt discomfort, for example, associated with intranasal drug administration. Alternative scores have been advocated for pain assessment in infants (eg, Neonatal Facial Coding System<sup>31</sup>). In this study, however, the NIPS was used because it is the standard in our emergency department. As our complementary analysis found associations between individual nalbuphine exposure and pain response in terms of NIPS,<sup>29</sup> we may conclude that this score was still a suitable measure for pain assessment in our study despite its limitations. NIPS was missing for 15%–58% of the interventions, partly also because the planned intervention

was not performed. The lumbar puncture, in particular, was not carried out in all cases (for example, for patients qualifying for partial sepsis work-up). Due to lack of randomisation (use of open alternate allocation procedure), some selection bias cannot fully be excluded. Finally, we did not obtain concentration measurements after 3 hours, limiting assessment of AUC<sub>0-infinity</sub> after intranasal administration.

### CONCLUSION

This is the first study reporting clinical PK after intranasal and intravenous administration of nalbuphine in infants 1–3 months of age. We observed similar exposure coverage following single administration of 0.1 mg/kg intranasal and 0.05 mg/kg intravenous nalbuphine, suggesting an intranasal bioavailability in the order of 50%. Intranasal administration was safe and well tolerated in 67% of patients. As such, intranasal dosing could be a safe, non-invasive alternative approach to parenteral administration of nalbuphine in clinical practice, especially if establishing a venous access is not feasible or too time-consuming. Intranasal dosing has the potential to reduce pain for paediatric patients and stress for parents and medical staff. Additional studies are warranted to investigate optimal dosing and timing of interventions as C<sub>max</sub> is delayed by half an hour after intranasal administration.

**Twitter** Priska Vonbach @PVonbach

**Acknowledgements** The authors would like to thank the whole team of the Children's Hospital Zurich emergency department for their great commitment. We also thank Martin Volleberg, Institute of Clinical Chemistry, University Children's Hospital Zurich; Dr Daniel Müller, Institute of Clinical Chemistry, University Hospital Zurich; and Dr Andrew Atkinson, Pediatric Pharmacology and Pharmacometrics Research Center, University Children's Hospital Basel. We also would like to thank the patients and their parents for their participation in this study.

**Contributors** MPiffner—conceptualisation/design, methodology, data curation, investigation, formal analysis, writing (drafting the initial manuscript), final approval of the version to be published. VG—data curation, formal analysis, supervision/oversight, writing (review or editing of the manuscript), final approval of the version to be published. PV—conceptualisation/design, methodology, funding acquisition, supervision/oversight, resources, writing (review or editing of the manuscript), final approval of the version to be published. MPfister—conceptualisation/design, methodology, funding acquisition, supervision/oversight, resources, writing (review

or editing of the manuscript), final approval of the version to be published. EB-O—conceptualisation/design, methodology, data curation, investigation, supervision/oversight, resources, writing (review or editing of the manuscript), final approval of the version to be published.

**Funding** The authors have not declared a specific grant for this research from any funding agency in the public, commercial or not-for-profit sectors.

**Competing interests** None declared.

**Patient consent for publication** Not required.

**Ethics approval** This study involves human participants and was approved by the local Ethics Committee and the Swiss Agency for Therapeutic Products (Swissmedic) (ClinicalTrials.gov Identifier: NCT03059511). Participants gave informed consent to participate in the study before taking part.

**Provenance and peer review** Not commissioned; externally peer reviewed.

**Data availability statement** Data are available upon reasonable request.

**Supplemental material** This content has been supplied by the author(s). It has not been vetted by BMJ Publishing Group Limited (BMJ) and may not have been peer-reviewed. Any opinions or recommendations discussed are solely those of the author(s) and are not endorsed by BMJ. BMJ disclaims all liability and responsibility arising from any reliance placed on the content. Where the content includes any translated material, BMJ does not warrant the accuracy and reliability of the translations (including but not limited to local regulations, clinical guidelines, terminology, drug names and drug dosages), and is not responsible for any error and/or omissions arising from translation and adaptation or otherwise.

**Open access** This is an open access article distributed in accordance with the Creative Commons Attribution Non Commercial (CC BY-NC 4.0) license, which permits others to distribute, remix, adapt, build upon this work non-commercially, and license their derivative works on different terms, provided the original work is properly cited, appropriate credit is given, any changes made indicated, and the use is non-commercial. See: <http://creativecommons.org/licenses/by-nc/4.0/>.

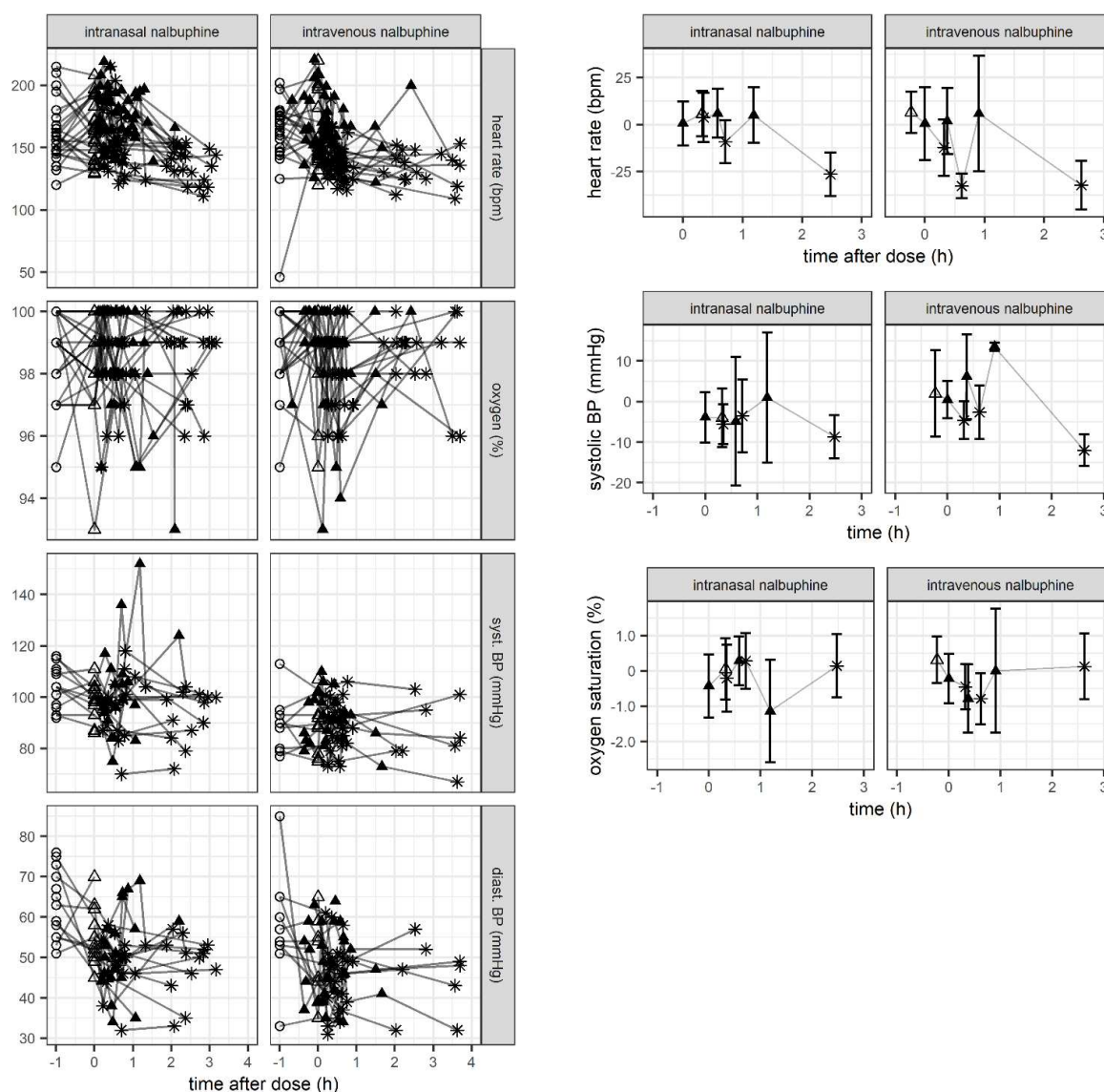
#### ORCID iD

Miriam Pfiffner <http://orcid.org/0000-0002-3511-6295>

#### REFERENCES

- Swissmedicinfo. Fachinformation Nalbuphin; 2020.
- Jaillon P, Gardin ME, Lecocq B, et al. Pharmacokinetics of nalbuphine in infants, young healthy volunteers, and elderly patients. *Clin Pharmacol Ther* 1989;46:226–33.
- Bressolle F, Khier S, Rochette A, et al. Population pharmacokinetics of nalbuphine after surgery in children. *Br J Anaesth* 2011;106:558–65.
- Jacqz-Aigrain E, Debillon T, Daoud P, et al. Population pharmacokinetics of nalbuphine in neonates. *Paediatr Perinat Drug Ther* 2003;5:190–8.
- FDA. FDA-Approved drugs. Reference ID: 4500827, 2019. Available: <https://www.accessdata.fda.gov/scripts/cder/daf/index.cfm?event=overview.process&ApplNo=018024>
- Fachinformationsverzeichnis Deutschland. Nubain ® 10 Mg / ml Injektionslösung; 2020: p. 1–3. <https://www.fachinfo.de/api/fachinfo/pdf/023086>
- Bessard G, Alibeu JP, Cartal M, et al. Pharmacokinetics of intrarectal nalbuphine in children undergoing general anaesthesia. *Fundam Clin Pharmacol* 1997;11:133–7.
- Borland M, Milsom S, Esson A. Equivalency of two concentrations of fentanyl administered by the intranasal route for acute analgesia in children in a paediatric emergency department: a randomised controlled trial. *Emerg Med Australas* 2011;23:202–8.
- Barrett MJ, Cronin J, Murphy A, et al. Intranasal fentanyl versus intravenous morphine in the emergency department treatment of severe painful sickle cell crises in children: study protocol for a randomised controlled trial. *Trials* 2012;13:74.
- EMA Europa. Productinformation Instanyl:1–59.
- Ruest S, Anderson A. Management of acute pediatric pain in the emergency department. *Curr Opin Pediatr* 2016;28:298–304.
- Del Pizzo J, Callahan JM. Intranasal medications in pediatric emergency medicine. *Pediatr Emerg Care* 2014;30:496–501.
- Pansini V, Curatola A, Gatto A, et al. Intranasal drugs for analgesia and sedation in children admitted to pediatric emergency department: a narrative review. *Ann Transl Med* 2021;9:189.
- Aitkenhead AR, Lin ES, Achola KJ. The pharmacokinetics of oral and intravenous nalbuphine in healthy volunteers. *Br J Clin Pharmacol* 1988;25:264–8.
- Nicolle E, Veit S, Guimier C, et al. Modified method of nalbuphine determination in plasma: validation and application to pharmacokinetics of the rectal route. *J Chromatogr B Biomed Sci Appl* 1997;690:89–97.
- Cai L-J, Zhang J, Wang X-M, et al. Validated LC-MS/MS assay for the quantitative determination of nalbuphine in human plasma and its application to a pharmacokinetic study. *Biomed Chromatogr* 2011;25:1308–14.
- Liang R, Shih Y, Chen Y, et al. European Journal of Pharmaceutical Sciences A dual system platform for drug metabolism : Nalbuphine as a model compound. *Eur J Pharm Sci [Internet]* 2019;2020. [Epub ahead of print: Available from].
- Schultz-Machata A-M, Becke K, Weiss M. Nalbuphin in Der Kinderanästhesie. *Anaesthesist* 2014;63:135–43.
- Pietsch U, Berger Y, Schurter D, et al. Nasal nalbuphine analgesia in prehospital trauma managed by first-responder personnel on Ski slopes in Switzerland: an observational cohort study. *Scand J Trauma Resusc Emerg Med* 2021;29:1–7.
- Ishimine P. Fever without source in children 0 to 36 months of age. *Pediatr Clin North Am* 2006;53:167–94.
- Grassin-Delyle S, Buenestado A, Naline E, et al. Intranasal drug delivery: an efficient and non-invasive route for systemic administration: focus on opioids. *Pharmacol Ther* 2012;134:366–79. doi:10.1016/j.pharmthera.2012.03.003
- Fortuna A, Alves G, Serralheiro A, et al. Intranasal delivery of systemic-acting drugs: small-molecules and biomacromolecules. *Eur J Pharm Biopharm* 2014;88:8–27.
- Arora P, Sharma S, Garg S. Permeability issues in nasal drug delivery. *Drug Discov Today* 2002;7:967–75.
- Corrigan M, Wilson SS, Hampton J. Safety and efficacy of intranasally administered medications in the emergency department and prehospital settings. *Am J Health Syst Pharm* 2015;72:1544–54.
- Pain assessment and management initiative C of MJ. *Neonatal Infant Pain Scale* 1993;12:1993.
- Wang Y, Jadhav PR, Lala M, et al. Clarification on precision criteria to derive sample size when designing pediatric pharmacokinetic studies. *J Clin Pharmacol* 2012;52:1601–6.
- Washington N, Steele RJ, Jackson SJ, et al. Determination of baseline human nasal pH and the effect of intranasally administered buffers. *Int J Pharm* 2000;198:139–46.
- Nimmo WS, Heading RC, Wilson J, et al. Inhibition of gastric emptying and drug absorption by narcotic analgesics. *Br J Clin Pharmacol* 1975;2:509–13.
- Pfiffner M, Berger-Olah E, Vonbach P, et al. Pharmacometric analysis of intranasal and intravenous nalbuphine to optimize pain management in infants. *Front. Pediatr.* 2022;10.
- Swissmedicinfo. Fachinformation Nalbuphin; 2016.
- Giordano V, Edobor J, Deindl P, et al. Pain and sedation scales for neonatal and pediatric patients in a preverbal stage of development: a systematic review. *JAMA Pediatr* 2019;173:1186–97.

## Supplemental Material



**Supplementary Figure:** left: Illustration of (vital signs (A-D) measured in all patients having received nalbuphine. Right: Data is illustrated as mean change from baseline with 95% confidence interval (error bars).

○: baseline ▲: establishment of venous accesses, urinary catheterization, lumbar puncture. Δ: nalbuphine administration. \*: blood sampling for pharmacokinetic assessment.



**Supplementary Table:** Supplement: Summary of Neonatal Infant Pain Score (NIPS) for all 52 patients who received nalbuphine as indicator of pain control (baseline, during establishment of venous access, urinary catheterization and lumbar puncture) and tolerability of route of administration (during nalbuphine administration) \*

	Baseline	Establishing venous access		Nalbuphine administration (intravenous and intranasal)		Urinary Catheterization		Lumbar puncture	
Neonatal Infant Pain Score (NIPS)		iv group N (%)	intranasal group N (%)	iv group N (%)	intranasal group N (%)	iv group N (%)	intranasal group N (%)	iv group N (%)	intranasal group N (%)
number (%) of patients available for NIPS evaluation	43/52 (83%)	19/26 (73%)	21/26 (81%)	14/26 (54%)	21/26 (81%)	22/26 (85%)	20/26 (77%)	11/26 (42%)	14/26 (54%)
low <3 mild to no pain	33/43 (77%)	7/19 (37%)	7/21 (33%)	10/14 (71%)	14/21 (67%)	5/22 (23%)	7/20 (35%)	1/11 (9%)	4/14 (29%)
medium 3+4 moderate pain	5/43 (12%)	4/19 (21%)	1/21 (5%)	1/14 (7%)	1/21 (5%)	7/22 (32%)	3/20 (15%)	1/11 (9%)	2/14 (14%)
high > 4 severe pain	5/43 (12%)	8/19 (42%)	13/21 (62%)	3/14 (21%)	6/21 (29%)	10/22 (45%)	10/20 (50%)	9/11 (82%)	8/14 (57%)

N = number of patients. \*Interventions for medical work up were carried out at 5 minutes before (iv)/after (intranasal) nalbuphine administration (establishment of venous access for blood sampling), and 20, and 35 minutes after drug administration (urinary catheterization and lumbar puncture, respectively).