

# ***Errata to*** **2007 Edition** **National Electrical Safety Code®**

*Correction Sheet*  
**Issued 14 May 2007**

Copyright © 2007 by the Institute of Electrical and Electronics Engineers, Inc.  
All rights reserved. Published 2007. Printed in the United States of America.

This correction sheet may be freely reproduced and distributed in order to maintain the utility and currency of the underlying Standard. This correction sheet may not be sold, licensed, or otherwise distributed for any commercial purposes whatsoever. The content of this correction sheet may not be modified.

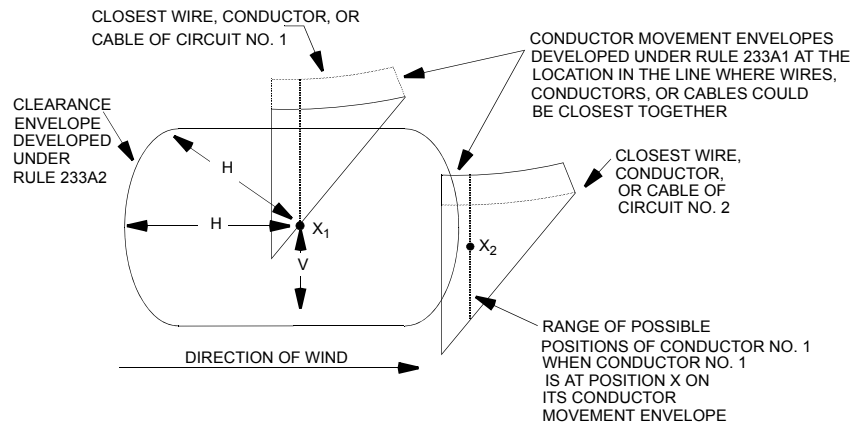
The following corrections should be made:

**Page 92:** There is an error in Table 232-1 (ft). The footnote that appears in the first column of the fourth row should be “<sup>(26)</sup>” and not “<sup>(29)</sup>.”

**Table 232-1—Vertical clearance of wires, conductors, and cables above ground,  
roadway, rail, or water surfaces**

4. Other land traversed by vehicles, such as cultivated, grazing, forest, orchards, etc. <sup>(26)</sup>	15.5	16.0	16.5	18.5	—	—
--	------	------	------	------	---	---

**Page 101:** There is an error in one of the arrow descriptions in Figure 233-1. The arrow description associated with the double arrows located to the top and right of the figure should read “CONDUCTOR MOVEMENT ENVELOPES DEVELOPED UNDER RULE 233A1...” and not “CONDUCTOR MOVEMENT ENVELOPES DEVELOPED UNDER RULE 233AI...”



**NOTE:** In this illustration, Conductor No. 2 is closest at position  $X_2$  to Conductor No. 1, where the latter is at position  $X_1$ .

**Figure 233-1—Use of clearance envelope and conductor movement envelopes to determine applicable clearance**

**Page 149:** There is an error in Table 235-5 (m). The footnote that appears in the first column of row 2a should appear after “750 V” and not at the end of the listing.

**Table 235-5—Vertical clearance between conductors at supports**

a. Open conductors 0 to 750 V <sup>⑩</sup> ; supply cables meeting Rule 230C1, 2, or 3; neutral conductors meeting Rule 230E1	0.41 <sup>⑨</sup>	0.41 <sup>②</sup>	0.41 plus 0.01 per kV <sup>⑥</sup> in excess of 8.7 kV	1.00 plus 0.01 per kV <sup>⑥</sup> in excess of 8.7 kV
---	-------------------	-------------------	--	--

**Page 150:** There is an error in the fifth footnote that appears at the end of Table 235-5 (m). Footnote <sup>⑤</sup> should refer to metric and not customary units. The first sentence of the footnote should state “0.75 m” and not “30 in.”

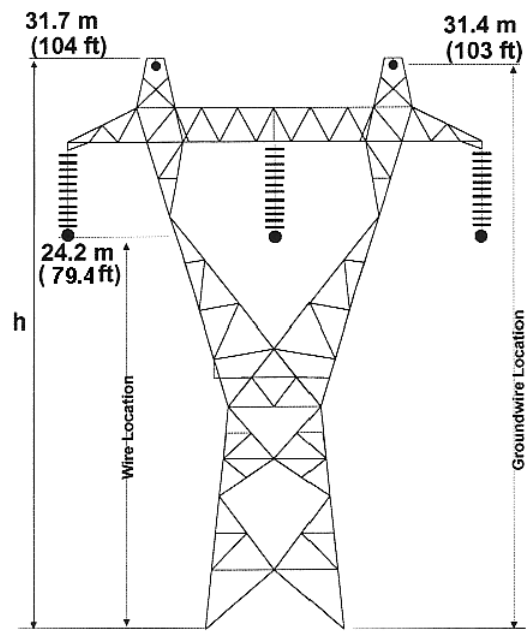
<sup>⑤</sup>May be reduced to 0.75 m in for supply neutrals meeting Rule 230E1, fiber-optic supply cables on an effectively grounded messenger meeting Rule 230F1a, entirely dielectric fiber-optic supply cables meeting Rule 230F1b, insulated communication cables located in the supply space and supported by an effectively grounded messenger, and cables meeting Rule 230C1 where the supply neutral or messenger is bonded to the communication messenger. Bonding is not required for entirely dielectric cables meeting Rule 230F1b.

**Page 151:** There is an error in Table 235-5 (in). The footnote that appears in the first column of row 2a should appear after “750 V” and not at the end of the listing.

**Table 235-5—Vertical clearance between conductors at supports**

a. Open conductors 0 to 750 V <sup>⑩</sup> ; supply cables meeting Rule 230C1, 2, or 3; neutral conductors meeting Rule 230E1	0.41 <sup>⑨</sup>	0.41 <sup>②</sup>	0.41 plus 0.01 per kV <sup>⑥</sup> in excess of 8.7 kV	1.00 plus 0.01 per kV <sup>⑥</sup> in excess of 8.7 kV
---	-------------------	-------------------	--	--

**Page 290:** There is an error in the figure in Example 1 of Appendix C. The height of the “Wire Location” should be “(79.4 ft)” and not “(72.5 ft).”



**Example 1**