

Using Data to Support Educators' Implementation of Positive Classroom Behavior Support (PCBS) Practices

Brandi Simonsen

Jen Freeman

University of Connecticut

Jessica Swain-Bradway

Northwest PBIS Network

Heather Peshak George

University of South Florida

Robert Putnam

May Institute

Kathleen Lynne Lane

University of Kansas

Jeffrey Sprague

University of Oregon

Patti Hershfeldt

Mid-Atlantic PBIS Network

Author Note: The development of this paper was supported in part by a grant from the Office of Special Education Programs, U.S. Department of Education (H029D40055). Opinions expressed herein are the authors' and do not reflect necessarily the position of the US Department of Education or the University of Connecticut, and such endorsements should not be inferred.

Address correspondence to: Brandi Simonsen, Center for Behavioral Education and Research (www.cber.org), Neag School of Education, University of Connecticut, 249 Glenbrook Road Unit 3064, Charles B. Gentry Building, Storrs, CT 06269-3064. E-mail: brandi.simonsen@uconn.edu

Abstract

Research suggests (a) students benefit when educators implement positive and proactive classroom behavior support practices (e.g., maximizing structure, teaching expected behaviors, delivering engaging instruction) and (b) educators benefit when school leadership teams invest in positive and proactive professional development support systems (e.g., training, coaching, performance feedback). Unfortunately, implementation is complex, and educators and school leadership teams implement key practices and systems at lower rates than desired. To increase the likelihood of successful implementation and desired outcomes, we encourage educators and leadership teams to collect and use data to guide decision-making. In this paper, we discuss the types and purposes of data to guide decision-making, describe a cycle for collecting and using data, and share examples of how individual educators and school leadership teams use data to guide implementation of practices to support students and systems to support educators.

Keywords: data, evaluation, educators, teachers, classroom management, behavior support, data-based decision-making, professional development

Decades of research have established an array of empirically supported and proactive positive classroom behavior support (PCBS) practices that are associated with desired social behavior and academic outcomes (Brophy, 1988; Marzano, Pickering, & Pollock, 2003; Office of Special Education Programs [OSEP], 2015; Simonsen, Fairbanks, Briesch, Myers, & Sugai, 2008). For example, research suggests educators design their classroom to provide structure (e.g., Ahrentzen & Evans, 1984; Burgess & Fordyce, 1989; Susman, Huston-Stein, & Friedrich-Cofer, 1980), develop and explicitly teach routines and expectations (e.g., Greenwood, Hops, Delquadri, & Guild, 1974; Johnson, Stoner, & Green, 1996), prompt and pre-correct for desired behavior (e.g., Colvin, Sugai, Good, & Lee, 1997; Faul, Stepensky, & Simonsen, 2012; Sprague & Thomas, 1997), plan and deliver engaging instruction that includes high rates of opportunities to respond (e.g., Carnine, 1976; MacSuga-Gage & Simonsen, 2015; Sutherland, Alder, & Gunter, 2003), provide specific feedback (praise or corrections) contingent on students' social behaviors and academic responses (e.g., Abramowitz, O'Leary, & Futersak, 1988; Sutherland, Wehby, & Copeland, 2000), and implement a continuum of consequences to acknowledge appropriate and discourage inappropriate behavior (e.g., Davies & Witte, 2000; Kehle, Bray, & Theodore, 2000; Yawkey, 1971). For additional information about core PCBS practices, see OSEP's guide on *Supporting and Responding to Student Behavior* (OSEP, 2015). Despite clear evidence supporting these core PCBS practices, researchers have documented

that practices are often missing (e.g., prompts) or implemented at low levels (e.g., specific praise, opportunities to respond; Reinke, Herman, & Stormont, 2012; Scott, Alter, & Hirn, 2011) in classrooms. It is critical that (a) educators implement core PCBS practices to support student behavior, (b) the school leadership teams support educators' implementation, and (c) educators and leadership teams use data to monitor and adjust supports for students and educators, respectively.

Educators Implementation of Core PCBS Practices

When educators implement the core set of PCBS practices (i.e., maximizing structure, explicitly teaching positive classroom expectations, actively engaging students in learning, and effectively responding to student behavior), students benefit behaviorally and academically (e.g., OSEP, 2015; Simonsen et al., 2008). Specifically, students

- increase appropriate behavior (e.g., on-task behavior, academic engagement; Christle & Schuster, 2003; Ferguson, & Houghton, 1992; Lambert, Cartledge, Heward, & Lo, 2006; Johnson, Stoner, & Green 1996; Rosenberg, 1986; Sharpe, Brown, & Crider, 1995; Sutherland et al., 2003; Sutherland, et al., 2000; West & Sloane, 1986; Wilcox, Newman, & Pitchford, 1988),
- decrease inappropriate behavior (e.g., off-task behavior, disruptions; De Pry & Sugai, 2002; Huston-Stein, Friedich-Cofer, & Susman, 1977; Johnson et al., 1996; Nelson, Johnson, & Marchand-Martella, 1996; Rosenberg, 1986; Sharpe et al., 1995; Sutherland et al., 2003; West & Sloane, 1986), and
- improve academic outcomes (e.g., correct responses, quiz scores; Christle & Schuster, 2003; Craft, Alber, Heward, 1998; Good, Eller, Spangler, & Stone, 1981; Greenwood, Delquadri, & Hall, 1989; Lambert et al., 2006; Roca & Gross, 1996; Simmons, Fuchs, & Fuchs, 1995; Sutherland & Wehby, 2001; Wolford, Heward, & Alber, 2001).

Therefore, experts recommend that educators implement this core set of PCBS practices, monitor their fidelity of implementation, and evaluate the effects of implementation in a manner that is socially valid and promotes equity for *all* students, regardless of language, race, ethnicity, ability, religion, sex, gender identity, sexual orientation, socioeconomic status, or other demographic characteristic (Sugai, O'Keefe, & Fallon, 2012; Skiba, Ormiston, Martinez, & Cummings, 2016; Weinstein, Curran, & Tomlinson-Clarke, 2003). To increase the likelihood of educators implementing core PCBS practices, it is critical that educators receive support.

Supporting Educators' Implementation of Core PCBS Practices

Given the complexities of implementing core PCBS practices to meet the needs of *all* students, most educators require training and ongoing support to be successful. However, scholars have consistently demonstrated that educators typically (a) do not receive sufficient training in PCBS practices (Begeny & Martens, 2006; Chelsey & Jordan, 2012; Freeman, Simonsen, Briere, & MacSuga-Gage, 2014), (b) are concerned about students' behavior and classroom discipline (Stough, 2006), (c) implement PCBS practices at lower rates than recommended (Reinke et al., 2012; Scott et al., 2011), and (d) require additional support to implement PCBS practices effectively (Authors, 2018; Halford, 1998; Lane, Wehby, & Barton-Arwood, 2005). Therefore, school leadership teams (e.g., school administrators, school psychologists, behavior specialists, instructional leaders, mentor educators) must be ready to support educators' implementation of PCBS practices.

An emerging literature base suggests key elements of positive and proactive professional development (PD) support systems (Fixsen, Naoom, Blasé, Friedman, & Wallace, 2005; Darling-Hammond, Hyler, & Gardner, 2017; Simonsen et al., 2014), including explicit training (e.g., Duchaine, Jolivete, Fredrick, 2011; Gorman-Smith, Beidel, Brown, Lochman, & Haaga, 2003), modeling (e.g., Greenwood, et al., 1974; Gorman-Smith et al., 2003), coaching (e.g., Gorman-Smith et al., 2003; Joyce & Showers, 2002), performance feedback (e.g., Codding, Livanis, Pace, Vaca, 2008; Duchaine et al., 2011; Simonsen, Myers, & Deluca, 2010), and self-management (e.g., Reinke, Lewis-Palmer, & Merrel, 2008; Simonsen et al., 2017). For additional information about core systems features, see OSEP's National Technical Assistance Center on Positive Behavioral Interventions and Supports' recently released technical brief on *Systems to Support Teachers' Implementation of Positive Classroom Behavior Support* (Freeman et al., 2017). To design appropriate PD support systems, leadership teams must implement and evaluate PD supports in a manner that is socially valid and promotes equity (i.e., matched to educators' background, learning history, needs, content area, population, etc.). Unfortunately, just as research indicates educators implement PCBS practices at lower rates than recommended, national data suggest that school leadership teams rarely provide PD support systems for educators in classroom management (e.g., Wei, Darling-Hammond, & Adamson, 2010).

Further, educators and schools may also benefit from a broader cascade of supports, including district- and state-level supports. That is, beginning with a focus on student benefit, educators implement

PCBS practices to support students within their classrooms, school leadership teams support educators within their buildings, district-level teams support the schools within their districts, and state-level teams support districts within their states. At each level, a leadership team is needed to (a) provide leadership (i.e., secure stakeholder support and funding, promote policy and systems alignment, and develop workforce capacity), (b) support implementation (i.e., coordinate training, coaching, evaluation and performance feedback; develop behavioral expertise), and (c) develop local implementation examples (OSEP Technical Assistance Center on Positive Behavioral Interventions and Systems [PBIS], 2015, 2017). Educators, as individuals or members of teams at each level, need data to drive their decision-making. This article addresses how educators and leadership teams can use data to support implementation of PCBS practices; however, the logic presented may be extended to the district and state levels, as described by Fixsen, Blase, Metz, & van Dyke, 2013 (Fixsen, Blase, Duda, Naoom, & van Dyke, 2010; Fixsen et al., 2005).

Using Data to Drive Decision-Making

Taken together, there is a critical need for educators and school leadership teams to implement empirically supported PCBS practices and PD support systems, respectively (OSEP 2015; Freeman et al., 2017). For educators and school leadership teams, implementation requires a series of decisions related to implementing and evaluating the effects of core strategies in a manner that is socially valid and promotes equity among *all* students and educators. To increase the likelihood of these decisions leading to desired outcomes, educators and leadership teams need information, or data, and a logical process to guide their decision-making (Simonsen & Sugai, 2007). In this paper, we describe (a) a general cycle for using data to support educators' implementation of PCBS practices and school leadership teams' implementation of PD support systems and (b) purposes and considerations for data collection. Thus, we describe parallel processes for an educator to engage in data-based decision-making within a classroom and a leadership team to engage in data-based decision-making within a school. We conclude with a table that illustrates how individual educators use data within their classrooms to support their implementation of PCBS practices and how school leadership teams use data to inform their school-wide PD support systems for all educators, and we provide a checklist to assist educators and leadership teams in this process.

Cycle for Data-Based Decision-Making

To assist educators and leadership teams in effectively using data to support decision-making, we propose a general process (see Figure 1) that can be applied at the classroom or school-wide level to support educators and leadership teams, respectively. Although data-based decision-making is a recursive process that may be entered at any “step,” educators and school leadership teams benefit from implementing core features of empirically supported PCBS practices (e.g., structure, expectations, engaging instruction) and PD support systems (e.g., training, coaching, performance feedback), respectively, to increase the likelihood of success. Thus, implementation fidelity of core practice and system features is the first consideration (Box 1 at the top of Figure 1). To address this question, educators and leadership teams should examine data related to both content and process elements of implementation fidelity. If features are implemented with fidelity, the next consideration is whether individuals are achieving desired outcomes (Box 2 on the right of Figure 1). To address this question, educators and leadership teams should monitor outcomes. If educators or leadership teams are either not implementing features with fidelity or if students or educators are not achieving desired outcomes, respectively, educators and school leadership teams should begin a structured problem-solving sequence (e.g., Deno, 2005) to identify and precisely define the problem (Box 3 on the bottom of Figure 1). Specifically, educators and leadership teams should (a) employ screening data to consider *who* (all, some, few) is not implementing with fidelity or achieving desired outcomes and (b) use diagnostic data to determine *what* challenges the individual is experiencing and *why* the challenges exist. After defining the problem, educators and leadership teams move toward a solution by identifying how they would enhance (intensify, modify, or add features) implementation to improve fidelity or outcomes for students and educators (Box 4 on the left of Figure 1). Then, they monitor the fidelity of implementation of the enhanced features and begin the cycle again.

In addition, for each element, educators and leadership teams consider whether the selected assessment, practice or system feature, and implementation approach are socially valid and equitable (questions at the bottom of Figure 1). As stated, this general process can be applied to support individual educators’ implementation of PCBS practices and school leadership teams’ implementation of school-wide professional development systems.

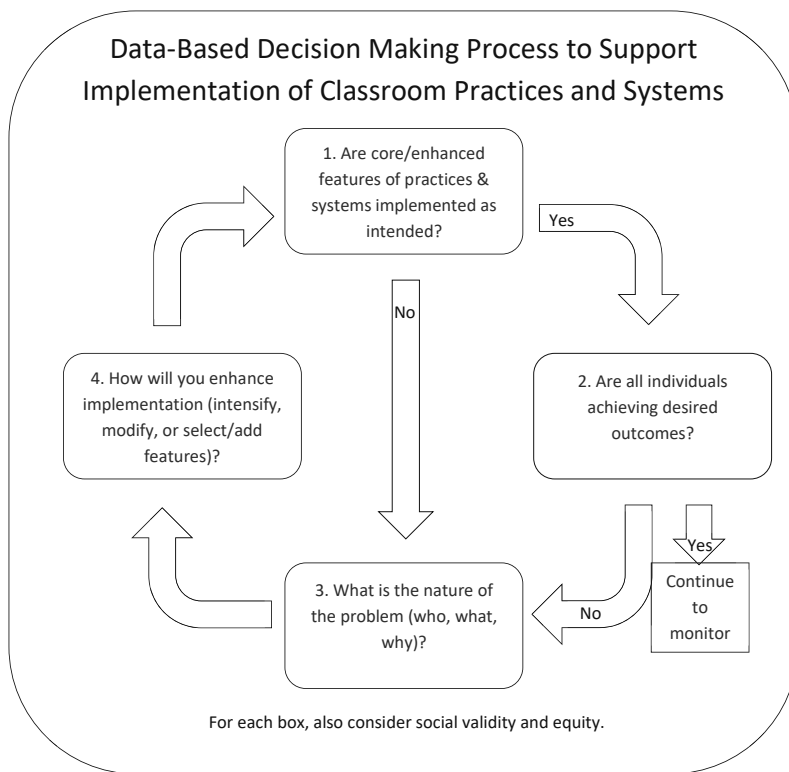


Figure 1. This cycle illustrates how (a) individual educators can evaluate and make decisions to enhance their implementation of PCBS practices and (b) school leadership teams can evaluate and make decisions to enhance PD support systems for educators in a building.

Purposes and Considerations for Data Collection

To effectively implement the general data cycle, educators and members of school leadership teams collect and use data for a variety of purposes (Crawford, 2014; Lane, Beebe-Frankenberger, Lambros, & Pierson, 2001), including (a) assessing how well core PCBS practices or PD system supports are being implemented (fidelity; Box 1 of Figure 1), (b) monitoring progress toward desired goals (outcomes) and evaluating the extent to which individuals are meeting desired outcomes with universal implementation of core practices or systems support (screening; Box 2 of Figure 1), (c) identifying areas in need of improvement (diagnostic) and other relevant information to describe

the nature of the problem (Box 3 of Figure 1), and (d) using data to make decisions about how to enhance implementation (intensify, modify, or select/add features; Box 4 of Figure 1). Also, data-based decisions occur in a context; therefore, it is critical to consider local norms and values in selecting implementation and measurement approaches (social validity) and ensure selected approaches work for all (equity; questions at the bottom of Figure 1). The following sections describe the types and purposes of data and provide examples at two levels: educator (focused on implementation of PCBS practices) and leadership team (focused on implementation of PD support systems).

Fidelity of Implementation

Before assessing whether a specific practice or system feature is effective (i.e., results in desired outcomes), it is critical to determine whether that feature is being implemented with fidelity (Box 1 of Figure 1; e.g., Gresham, Dart, & Collins, 2017; Lane, Jolivette, Conroy, Nelson, & Benner, 2011). Fidelity of implementation (also known as treatment integrity) refers to whether an intervention is being implemented as intended (Gresham, 1989; Gresham, Gansle, Noell, Cohen, & Rosenblum, 1993; O'Donnell, 2008; Yeaton & Sechrest, 1981). Research consistently demonstrates fidelity of implementation impacts intervention outcomes (e.g., Benner, Beaudoin, Chen, Davis, & Ralston, 2010; Flannery, Fenning, Kato, & McIntosh, 2014; McGraw, Sellers, Stone, & Bebchuk, 1996; O'Donnell, 2008; Simonsen et al., 2012). More specifically, when school leaders, coaches, and other support providers implement key PD support systems features (training, coaching, and feedback) with fidelity, teachers increase their implementation fidelity of key PCBS practices (Darling-Hammond et al., 2017; Simonsen et al., 2014); and when teachers implement key PCBS practices with fidelity, in the context of school-wide PBIS, school outcomes improve (Childs, Kincaid, George, & Gage, 2016) and schools become more likely to sustain implementation of school-wide PBIS (Matthews, McIntosh, Frank, & May, 2014). Thus, educators' and leadership teams' implementation fidelity of PCBS practice and systems, respectively, is critical to achieve and sustain desired outcomes.

Scholars have established that fidelity has at least five dimensions: adherence (components "delivered as prescribed"), exposure (duration or frequency of participation), quality ("qualitative aspects" of implementation), participant responsiveness to intervention (observed indicators during intervention), and program differentiation (ensuring participants in each group of an experimental study "received only planned interventions"; Dane & Schneider, 1998, p. 43). These dimensions reflect content (adherence, exposure/duration, and

differentiation) and process (quality and participant responsiveness) variables (Gresham et al., 1993; Power et al., 2005). Thus, data collected on the fidelity of educators' implementation of PCBS practices and school leadership teams' implementation of PD support systems should incorporate both content and process variables.

There are a variety of strategies to assess the fidelity of implementation, including direct observations, review of permanent products, surveys, interviews, and self-report (Ledford & Gast, 2014; O'Donnell, 2008; Paulson, Post, Hendrickx, & Risser, 2002). Further, multiple strategies may be employed to assess various dimensions of fidelity (e.g., Reinke, Herman, Stormont, Newcomer, & David, 2013), and fidelity may be measured and reported by intervention component or day (Gresham et al., 1993; Power et al., 2005). When possible, educators and outside observers should assess implementation fidelity, as educators may inflate ratings of their implementation (Hansen, Pankratz, & Bishop, 2014) and there are benefits to forming a collaborative partnership to monitor and support implementation (Power et al., 2005).

Outcomes and Screening

After ensuring that educators are implementing PCBS and leadership teams are implementing key PD support systems with sufficient fidelity, it becomes possible to evaluate whether the intervention results in desired outcomes (Box 2 of Figure 1). Typical outcomes of educators' implementation of PCBS practices include improved student behavior (e.g., increased prosocial behavior, increased on-task or academically engaged behavior, decreased office referrals), increased academic outcomes, and related indicators of students' behavior (Simonsen et al., 2008).

Typical outcomes of school leadership teams' implementation of PD support systems focus on educator behavior, for example, the extent to which educators in a school implement key PCBS practices with fidelity, overall school-wide summaries of educators' implementation, educators' perceptions of school climate, educator attendance, and educator retention (Simonsen et al., 2014). Educators and leadership teams may use a variety of approaches to assess progress toward outcomes, including direct observation (e.g., walk-throughs, scheduled observations), checklists, rating scales, and permanent products (Simonsen et al., 2014). Many of these tools may be used (a) formatively, with repeated measures across time, to monitor progress or (b) summatively to evaluate whether PCBS practices and PD support systems are resulting in desired effects for students and educators, respectively.

As we consider outcomes, we also engage in screening to identify individuals who may need more support than universal implementation of core PCBS practices and school-wide systems, placing them at-risk for not meeting outcomes or being identified with a more significant need (Deno, 2005; Lane, Menzies, Ennis, & Oakes, 2015). A simple approach to screening is to use formative data collected to monitor progress toward outcomes and identify individuals whose performance places them at risk for not meeting outcomes (based on prior norms or an overall criterion). For example, educators may use direct observation or a brief direct behavior rating (<http://dbr.education.uconn.edu>) to efficiently monitor student behavior relative to their peers or established norms. In addition, there are free access and commercially available tools that may be used to screen for students with specific or general behavior challenges (e.g., *Systematic Screening of Behavior Disorders*; Walker, Severson, & Feil, 2014).

Similarly, school leadership team members may perform brief walk-through observations or collect self-monitoring data to monitor educators' implementation of PCBS practices and screen for educators who may require more support with classroom management. In addition, they may employ free access or commercially available tools to assess educators' implementation of PCBS practices (e.g., *Classroom Assessment and Scoring System*; Pianta, La Paro, & Hamre, 2008). Regardless of approach, the key to using data for screening is identifying individuals whose behaviors are considered at-risk and require more support.

Describing the Nature of the Problem: Diagnostic Data

Diagnostic data, as the name implies, enable accurate and specific description or "diagnosis" of a problem (Box 3 of Figure 1). Whereas screening data identify individuals who may not be making sufficient progress toward outcomes, diagnostic data describe *what* the individuals' challenges "look like" (what behaviors are they engaging in at what levels) and *why* challenges may be occurring (e.g., "can't do" vs. "won't do"). At both the classroom and school levels, precise diagnostic data are helpful in determining how to approach a problem and develop a solution. For example, if a student is identified as exhibiting higher than average levels of off-task behavior, educators may collect additional data to describe the behavior and the context (i.e., antecedents and consequences) in which it occurs. Based on this detailed information, the student's educator may develop an action plan to enhance existing supports or request assistance to develop a more targeted or individualized behavior support plan. Similarly, members of a leadership team may work with an educator who is observed de-

livering frequent loud reprimands without providing specific praise. Diagnostic data allow the leadership team to understand the nature of the challenges in the classroom, identify an appropriate goal (e.g., implement a 5:1 ratio of praise to corrections; Cook et al., 2017), and develop an action plan that incorporates teaching critical classroom management skills and supporting implementation via performance feedback (e.g., Myers, Simonsen, & Sugai, 2011).

Social Validity

Social validity refers to the social “significance of the *goals*,” “appropriateness of the *procedures*,” and the “importance of the *effects*” (Wolf, 1978, p. 207). Social validity data reflect information from key stakeholders about whether the goals and outcomes are important, implementation procedures are acceptable, and effects are meaningful. For an educator, the social validity of PCBS practices may be established by all stakeholders (educators, students, and family members) agreeing on key outcomes (goals; e.g., students will engage in safe and respectful behavior), implementing specific PCBS practices with good contextual fit (procedures), and evaluating whether student behavior improved in a noticeable and important manner (effects). For the leadership teams, social validity may be promoted by securing buy-in for enhancing implementation of PCBS practices (goals), investing in job-embedded and empirically supported features of professional development (procedures), and determining whether enhanced educators’ implementation resulted in meaningful changes for students (effects).

Social validity affects educators’ implementation of PCBS practices (Wehby, Maggin, Moore Partin, & Robertson, 2012). Educators may assess social validity using a variety of measures (Lane et al., 2001), including (a) brief surveys, such as the Intervention Rating Profile (IRP; Martens, Witt, Elliott, & Darveaux, 1985; Witt, Martens, & Elliott, 1984), the Usage Rating Profile (URP-R; Chafouleas, Briesch, Neugebauer, & Riley-Tillman, 2011), and Children’s Intervention Rating Profile (CIRP; Witt & Elliott, 1985); (b) evaluation of treatment integrity and outcome data; (c) intervention-specific measures; and (d) qualitative approaches.

Equity

To promote equity, educators consider whether their goals and outcomes, procedures, and effects are equitable across *all* subgroups within their classroom or school (Sugai et al., 2012). To increase the likelihood of equitable outcomes, implementation, and effects, educators may (a) select empirically supported practices that have

demonstrated efficacy with diverse populations; (b) recruit feedback from a variety of stakeholders (e.g., students, families) when implementing and evaluating practices; and (c) examine disaggregated data to determine if the effects are equitable across sub-groups (Sugai et al., 2012).

Data-Based Decisions to Adjust Implementation

As educators and leadership teams collect and use the sources of data at each step of the cycle depicted in Figure 1, they ultimately use their data to drive decisions about how they will adjust their implementation of PCBS practices and PD support systems (Box 4 of Figure 1). During this process, educators and school leadership teams use their own expertise to consider their data in the context of their own observations and experiences of student and staff needs. For example, if data indicate that educators are not implementing PCBS practices with fidelity (Box 1), school leadership teams may enhance PD supports by providing additional coaching (Box 4). If school leadership teams find that they are not implementing coaching with fidelity (Box 1), they may implement a more rigorous system for prompting and

Table 1
Examples of Data-Based Decision-Making Process

	Individual Educator Implementation	School-wide Implementation
STEP 1: Evaluate Implementation Fidelity of Classroom Practice Features	Educator counts OTR or praise statements during selected lessons to ensure rate is adequate Educator uses a checklist to ensure all critical features of a class-wide reinforcement system are in place	School leadership team uses a checklist to ensure that all staff have received training on all critical features of classroom management Leadership team arranges opportunities for all staff to receive feedback (from self, peer, coach) on their use of each skill
STEP 2: Assess Outcomes	Educator reviews pattern of student behavior referrals Educator uses momentary time sampling to estimate student time on task during selected lessons	Behavior coach conducts walk-through assessments in each classroom to determine the extent to which PCBS practices are in place Educators complete a self-assessment of their use of classroom management practices

Table 1 (continued)

	Individual Educator Implementation	School-wide Implementation
STEP 3: Engage in Problem Solving Process	<p>Educator collects data to determine how many students are struggling to master the homework routine</p> <p>Educator asks a peer to collect data and give feedback on rate and quality of OTRs during a select lesson</p>	<p>School leadership team reviews data to determine the number of educators implementing PCBS practices with fidelity and identify those who are not</p> <p>Leadership team collects data to determine the specific skills educators still need support on</p>
STEP 4: Develop Plan to Enhance Implementation	<p>Educator determines that most students have not mastered the homework routine and decides to reteach the procedures and develops a reinforcement system to support the routine</p> <p>Educator determines that the rate of OTRs declines at the end of lessons and creates a self-management plan to increase OTR rates during that time</p>	<p>School leadership team determines that a small group of educators need additional support using specific praise statements and provides a targeted PD session for those educators with opportunities for peer feedback</p> <p>School leadership team provides 1:1 consultation for teachers demonstrating significant need</p>
ALL STEPS: Consider the Cultural and Contextual Fit for All Practices and Measures	<p>Educators allow students to select reinforcers used in the class-wide reinforcement system</p> <p>Educators ask students to share preferences for OTR types (e.g., verbal, written, gestural)</p> <p>Educators adjust implementation to meet the unique needs and backgrounds of their learners</p>	<p>School leadership team provides educator choice when implementing professional development systems</p> <p>School leadership team provides information and support on how to consider social validity and promote equity when implementing and evaluating evidence-supported practices</p>

monitoring their coaching activities (Box 4). Table 1 provides specific examples of each of these steps for both individual educators and school leadership teams. Figure 2 presents a checklist that prompts educators and leadership teams to select approaches to collect data for each step of this process, consider social validity and equity of each approach, and develop action steps toward collecting relevant data.

Consider Purpose of Data	Select Approach(es)	Consider Social Validity & Equity	Develop Action Steps
1. Are core/enhanced features of practices & systems implemented as intended (implementation fidelity)?			
a. Supports for students			
i. Content: Adherence, exposure/duration, and/or differentiation	<input type="checkbox"/> Direct observation <input type="checkbox"/> Permanent product <input type="checkbox"/> Survey, rating scale, or checklist <input type="checkbox"/> Interview or self-report	<input type="checkbox"/> Social validity: Are supports acceptable to students? <input type="checkbox"/> Equity: Are supports implemented appropriately for <i>all</i> students?	
ii. Process: Quality and/or participant responsiveness	<input type="checkbox"/> Direct observation <input type="checkbox"/> Permanent product <input type="checkbox"/> Survey, rating scale, or checklist <input type="checkbox"/> Interview or self-report	<input type="checkbox"/> Social validity: Are supports acceptable to students? <input type="checkbox"/> Equity: Are supports implemented appropriately for <i>all</i> students?	
b. Supports for educators			
i. Content: Adherence, exposure/duration, and/or differentiation	<input type="checkbox"/> Direct observation <input type="checkbox"/> Permanent product <input type="checkbox"/> Survey, rating scale, or checklist <input type="checkbox"/> Interview or self-report	<input type="checkbox"/> Social validity: Are supports acceptable to educators? <input type="checkbox"/> Equity: Are supports implemented appropriately for <i>all</i> educators?	
ii. Process: Quality and/or participant responsiveness	<input type="checkbox"/> Direct observation <input type="checkbox"/> Permanent product <input type="checkbox"/> Survey, rating scale, or checklist <input type="checkbox"/> Interview or self-report	<input type="checkbox"/> Social validity: Are supports acceptable to educators? <input type="checkbox"/> Equity: Are supports implemented appropriately for <i>all</i> educators?	
2. Are all individuals achieving desired outcomes?			
a. Student Outcomes: Behavior, attendance, school nurse visits, academics, etc.			
	<input type="checkbox"/> Direct observation <input type="checkbox"/> Permanent product <input type="checkbox"/> Survey, rating scale, or checklist <input type="checkbox"/> Interview or self-report	<input type="checkbox"/> Social validity: Are outcomes important and effects meaningful? <input type="checkbox"/> Equity: Are outcomes relevant and effects equitable for <i>all</i> students?	
b. Educator Outcomes: Implementation, climate, attendance, retention, etc.			
	<input type="checkbox"/> Direct observation <input type="checkbox"/> Permanent product <input type="checkbox"/> Survey, rating scale, or checklist <input type="checkbox"/> Interview or self-report	<input type="checkbox"/> Social validity: Are outcomes important and effects meaningful? <input type="checkbox"/> Equity: Are outcomes relevant and effects equitable for <i>all</i> educators?	

Figure 2. This checklist provides guidance to educators and leadership teams as they (a) select approach(es) to collect data for specific purposes (linked to steps in the process depicted in Figure 1), (b) consider social validity and equity for their selected approach(es), and (c) develop action steps toward collecting data for each purpose (e.g., adopt an existing tool, identify existing data sources, or develop a tool to meet a local need).

Summary

When individual educators approach data-based decision-making, they focus on their implementation of PCBS practices to support students in their classroom. When school leadership teams approach data-based decision-making, they focus on supporting classroom practice implementation for all educators. At both levels, educators and school leadership teams (a) collect data to monitor the fidelity of implementation of core practice and system features, (b) monitor progress toward relevant outcomes, (c) use data to screen for students and educators who require more support and engage in problem-solving process to “diagnose” or precisely identify problems, (d) develop an action plan to enhance implementation of key practice or

system features, and (e) monitor implementation fidelity of the enhanced features. By collecting and using data to guide decision-making, educators and leadership teams support the implementation of PCBS practices that maximize outcomes for students.

References

- Abramowitz, A. J., O'Leary, S. G., & Futersak, M. W. (1988). The relative impact of long and short reprimands on children's off-task behavior in the classroom. *Behavior Therapy, 29*, 243–247. doi:10.1016/S0005-7894%2888%2980046-7
- Ahrentzen, S., & Evans, G. W. (1984). Distraction, privacy, and classroom design. *Environment and Behavior, 16*, 437–454. doi:10.1177/0013916584164002
- Begeny, J. C., & Martens, B. K. (2006). Assessing pre-service educators' training in empirically validated behavioral instruction practices. *School Psychology Quarterly, 21*, 262–285. doi:10.1521/scpq.2006.21.3.262
- Benner, G. J., Beaudoin, K. M., Chen, P., Davis, C., & Ralston, N. C. (2010). The impact of intensive positive behavioral supports on the behavioral functioning of students with emotional disturbance: How much does fidelity matter? *Journal of Behavior Assessment and Intervention in Children, 1*, 85–100. doi:10.1037/h0100361
- Brophy, J. (1988). Research linking educator behavior to student achievement: Potential implications for instruction of Chapter 1 students. *Educational Psychologist, 23*, 235. doi:10.1207/s15326985ep2303_3
- Burgess, J. W., & Fordyce, W. K. (1989). Effects of preschool environments on nonverbal social behavior: Toddlers' interpersonal distances to educators and classmates change with environmental density, classroom design, and parent-child interactions. *Journal of Child Psychology and Psychiatry, 30*, 261–276. doi:10.1111/j.1469-7610.1989.tb00239.x
- Carnine, D. W. (1976). Effects of two educator-presentation rates on off-task behavior, answering correctly, and participation. *Journal of Applied Behavior Analysis, 9*, 199–206. doi:10.1901/jaba.1976.9-199
- Chafouleas, S. M., Briesch, A. M., Neugebauer, S. R., & Riley-Tillman, T. C. (2011). *Usage Rating Profile—Intervention (Revised)*. Storrs, CT: University of Connecticut.

- Chesley, G. M., & Jordan, J. (2012). What's missing from educator prep. *Educational Leadership, 69*, 41–45.
- Childs, K. E., Kincaid, D., George, H. P., & Gage, N. A. (2016). The relationship between school-wide implementation of positive behavior intervention and supports and student discipline outcomes. *Journal of Positive Behavior Interventions, 18*, 89–99. doi:10.1177/1098300715580992
- Christle, C. A., & Schuster, J. W. (2003). The effects of using response cards on student participation, academic achievement, and on-task behavior during whole-class, math instruction. *Journal of Behavioral Education, 12*, 147–165. doi:10.1023/A:1025577410113
- Codding, R. S., Livanis, A., Pace, G. M., & Vaca, L. (2008). Using performance feedback to improve treatment integrity of class-wide behavior plans: An investigation of observer reactivity. *Journal of Applied Behavior Analysis, 41*, 417–422. doi:10.1901/jaba.2008.41-417
- Colvin, G., Sugai, G., Good, R.H., III, & Lee, Y-Y. (1997). Using active supervision and pre-correction to improve transition behaviors in an elementary school. *School Psychology Quarterly, 12*, 344–361. doi:10.1037/h0088967
- Cook, C. R., Grady, E. A., Long, A. C., Renshaw, T., Codding, R. S., Fiat, A., & Larson, M. (2017). Evaluating the impact of increasing general education teachers' ratio of positive-to-negative interactions on students' classroom behavior. *Journal of Positive Behavior Interventions, 19*, 67–77. doi:10.1177/1098300716679137
- Craft, M. A., Alber, S. R., & Heward, W. L. (1998). Teaching elementary students with developmental disabilities to recruit teacher attention in a general education classroom: Effects on teacher praise and academic productivity. *Journal of Applied Behavior Analysis, 31*, 399–415. doi:10.1901/jaba.1998.31-399
- Crawford, L. (2014). The role of assessment in a response to intervention model. *Preventing School Failure, 58*, 230–236. doi:10.1080/1045988X.2013.805711
- Dane, A. V., & Schneider, B. H. (1998). Program integrity in primary and early secondary prevention: Are implementation effects out of control? *Clinical Psychology Review, 18*, 23–45. doi:10.1016/S0272-7358(97)00043-3
- Darling-Hammond, L., Hyler, M. E., & Gardner, M. (2017). *Effective teacher professional development*. Palo Alto, CA: Learning Policy Institute.

- Davies, S., & Witte, R. (2000). Self-management and peer-monitoring within a group contingency to decrease uncontrolled verbalizations of children with Attention-Deficit/Hyperactivity Disorder. *Psychology in the Schools, 37*, 135–147. doi:10.1002/(SICI)1520-6807(200003)37:2<135::AID-PITS5>3.0.CO;2-U
- De Pry, R. L., & Sugai, G. (2002). The effect of active supervision and pre-correction on minor behavioral incidents in a sixth-grade general education classroom. *Journal of Behavioral Education, 11*, 255–264.
- Deno, S. L. (2005). Problem-solving assessment. In R. Brown-Chidsey (Ed.), *Assessment for intervention: A problem-solving approach* (pp. 10–40). New York, NY: Guilford Press.
- Duchaine, E. L., Jolivet, K., & Fredrick, L. D. (2011). The effect of educator coaching with performance feedback on behavior-specific praise in inclusion classrooms. *Education and Treatment of Children, 34*, 209–227. doi:10.1353/etc.2011.0009
- Faul, A., Stepensky, K., & Simonsen, B. (2012). The effects of prompting appropriate behavior on the off-task behavior of two middle-school students. *Journal of Positive Behavior Interventions, 14*, 47–55. doi:10.1177/1098300711410702
- Ferguson, E., & Houghton, S. (1992). The effects of contingent teacher praise, as specified by Canter's Assertive Discipline programme, on children's on-task behaviour. *Educational Studies, 18*, 83–93. doi:10.1080/0305569920180108
- Fixsen, D. L., Naoom, S. F., Blase, K. A., Friedman, R. M., & Wallace, F. (2005). *Implementation research: A synthesis of the literature*. Tampa, FL: University of South Florida, Louis de la Parte Florida Mental Health Institute, The National Implementation Research Network (FMHI Publication #231).
- Fixsen, D., Blase, K., Metz, A., & van Dyke, M. (2013). Statewide implementation of evidence-based programs. *Exceptional Children, 79*, 213–230. doi:10.1177/001440291307900206
- Fixsen, D., Blase, K., Duda, M., Naoom, S. F., & van Dyke, M. (2010). Sustainability of evidence-based programs in education. *Journal of Evidence-Based Practices for Schools, 11*, 30–46.
- Flannery, K. B., Fenning, P., Kato, M. M., & McIntosh, K. (2014). Effects of school-wide positive behavioral interventions and supports and fidelity of implementation on problem behavior in high schools. *School Psychology Quarterly, 29*, 111–124. doi:10.1037/spq0000039

- Freeman, J., Simonsen, B., Briere, D. E., & MacSuga-Gage, A. S., (2014). Pre-service educator training in classroom management: A review of state accreditation policy and educator preparation programs. *Educator Educational and Special Education, 37*, 106–120. doi:10.1177/0888406413507002
- Freeman, J., Simonsen, B., Goodman, S., Mitchell, B., George, H. P., Swain-Bradway, H., Lane, K. L., Sprague, J., & Putnam, B. (2017). *PBIS technical brief on systems to support teachers' implementation of positive classroom behavior support*. Eugene, OR: University of Oregon. Retrieved from www.pbis.org.
- Good, C. E., Eller, B. F., Spangler, R. S., & Stone, J. E. (1981). The effect of an operant intervention program on attending and other academic behavior with emotionally disturbed children. *Journal of Instructional Psychology, 9*, 25–33.
- Gorman-Smith, D., Beidel, D., Brown, T. A., Lochman, J., & Haaga, D. F. (2003). Effects of educator training and consultation on educator behavior toward students at high risk for aggression. *Behavior Therapy, 34*, 437–452.
- Greenwood, C. R., Delquadri, J. C., & Hall, R. V. (1989). Longitudinal effects of class-wide peer tutoring. *Journal of Educational Psychology, 81*, 371–383. doi:10.1037/0022-0663.81.3.371
- Greenwood, C. R., Hops, H., Delquadri, J., & Guild, J. (1974). Group contingencies for group consequences in classroom management: A further analysis. *Journal of Applied Behavior Analysis, 7*, 413–425. doi:10.1901/jaba.1974.7-413
- Gresham, F. M. (1989). Assessment of treatment integrity in school consultation and prereferral intervention. *School Psychology Review, 18*, 37–50.
- Gresham, F. M., Dart, E. H., & Collins, T. A. (2017). Generalizability of multiple measures of treatment integrity: Comparisons among direct observation, permanent products, and self-report. *School Psychology Review, 46*, 108–121. doi:10.17105/SPR46-1.108-121
- Gresham, F. M., Gansle, K. A., Noell, G. H., Cohen, S., & Rosenblum, S. (1993). Treatment integrity of school-based behavioral intervention studies: 1980–1990. *School Psychology Review, 22*, 254–272.
- Halford, J. M. (1998). Easing the way for new educators. *Educational Leadership, 55*, 33–36.

- Hansen, W. B., Pankratz, M. M., & Bishop, D. C. (2014). Differences in observers' and teachers' fidelity assessments. *The Journal of Primary Prevention, 35*, 297–308. doi:10.1007/s10935-014-0351-6
- Huston-Stein, A., Friedrich-Cofer, L., & Susman, E. J. (1977). The relation of classroom structure to social behavior, imaginative play, and self-regulation of economically disadvantaged children. *Child Development, 48*, 908–916. doi:10.2307/1128340
- Johnson, T. C., Stoner, G., & Green, S. K. (1996). Demonstrating the experimenting society model with class-wide behavior management interventions. *School Psychology Review, 25*, 199–214.
- Joyce, B., & Showers, B. (2002). *Student achievement through staff development* (3rd ed.). Alexandria, VA: Association for Supervision and Curriculum Development.
- Kehle, T. J., Bray, M. A., & Theodore, L. A. (2000). A multi-component intervention designed to reduce disruptive classroom behavior. *Psychology in the Schools, 37*, 475–481.
- Lambert, M. C., Cartledge, G., Heward, W. L., & Lo, Y. (2006). Effects of response cards on disruptive behavior and academic responding during math lessons by fourth-grade urban students. *Journal of Positive Behavior Interventions, 8*, 88–99. doi:10.1177/10983007060080020701
- Lane, K. L., Beebe-Frankenberger, M. E., Lambros, K. M., & Pierson, M. (2001). Designing effective interventions for children at-risk for antisocial behavior: An integrated model of components necessary for making valid inferences. *Psychology in the Schools, 38*, 365–379. doi:10.1002/pits.1025
- Lane, K. L., Jolivette, K., Conroy, M., Nelson, C. M., & Benner, G. J. (2011). Future research directions for the field of E/BD: Standing on the shoulders of giants. *Education and Treatment of Children, 34*, 423–439. doi:10.1353/etc.2011.0029
- Lane, K. L., Menzies, H. M., Ennis, R. P., & Oakes, W. P. (2015). *Supporting behavior for school success: A step-by-step guide to key strategies*. New York, NY: Guilford Press.
- Lane, K. L., Wehby, J., & Barton-Arwood, S. (2005). Students with and at risk for emotional and behavioral disorders: Meeting their social and academic needs. *Preventing School Failure, 49*, 6–9. doi:10.3200/PSFL.49.2.6-9
- Ledford, J. R., & Gast, D. L. (2014). Measuring procedural fidelity in behavioural research. *Neuropsychological Rehabilitation, 24*, 332–348. doi:10.1080/09602011.2013.861352

- MacSuga-Gage, A. S., & Simonsen, B. (2015). Examining the effects of educator-directed opportunities to respond and student outcomes: A systematic review of the literature. *Education and Treatment of Children, 38*, 211–240. doi:10.1353/etc.2015.0009
- Martens, B. K., Witt, J. C., Elliott, S. N., & Darveaux, D. X. (1985). Educator judgments concerning the acceptability of school-based interventions. *Professional Psychology: Research and Practice, 16*, 191–198. doi:10.1037/0735-7028.16.2.191
- Marzano, R. J., Pickering, D. J., & Pollock, J. E. (2003). *Classroom management that works: Research-based strategies for every educator*. Alexandria, VA: Association for Supervision and Curriculum Development.
- Matthews, S., McIntosh, K., Frank, J. L., & May, S. L. (2014). Critical features predicting sustained implementation of school-wide positive behavioral interventions and supports. *Journal of Positive Behavior Interventions, 16*, 168–178. doi:10.1177/1098300713484065
- McGraw, S. A., Sellers, D. E., Stone, E. J., & Bebhuk, J. (1996). Using process data to explain outcomes: An illustration from the child and adolescent trial for cardiovascular health (CATCH). *Evaluation Review, 20*, 291–312. doi:10.1177/0193841X9602000304
- Myers, D., Simonsen, B., & Sugai, G. (2011). Increasing teachers' use of praise with a response to intervention approach. *Education and Treatment of Children, 34*, 35–59. doi:10.1353/etc.2011.0004
- Nelson, J. R., Johnson, A., & Marchand-Martella, N. (1996). Effects of direct instruction, cooperative learning, and independent learning practices on the classroom behavior of students with behavioral disorders: A comparative analysis. *Journal of Emotional and Behavioral Disorders, 4*, 53–62. doi:10.1177/106342669600400106
- O'Donnell, C. L. (2008). Defining, conceptualizing, and measuring fidelity of implementation and its relationship to outcomes in K–12 curriculum intervention research. *Review of Educational Research, 78*, 33–84. doi:10.3102/0034654307313793
- Office of Special Education Programs (2015). *Supporting and responding to student behavior: Evidence-based classroom strategies for educators*. Washington DC: Office of Special Education Programs. Retrieved from <https://www.osepideasthatwork.org/evidencebasedclassroomstrategies/>

- OSEP Technical Assistance Center on Positive Behavioral Interventions and Supports (October 2015). *Positive Behavioral Interventions and Supports (PBIS) Implementation Blueprint: Part 1—Foundations and Supporting Information*. Eugene, OR: University of Oregon. Retrieved from www.pbis.org.
- OSEP Technical Assistance Center on Positive Behavioral Interventions and Supports (May 2017). *Positive Behavioral Interventions and Supports (PBIS) Implementation Blueprint: Part 2—Self-Assessment and Action Planning*. Eugene, OR: University of Oregon. Retrieved from www.pbis.org.
- Paulson, R. I., Post, R. L., Herinckx, H. A., & Risser, P. (2002). Beyond components: Using fidelity scales to measure and assure choice in program implementation and quality assurance. *Community Mental Health Journal, 38*, 119–128. doi:10.1023/A:1014591020400
- Pianta, R. C., La Paro, K. M., & Hamre, B. K. (2008). *The classroom assessment scoring system manual, K–3*. Baltimore, MD: Brookes Publishing Co.
- Power, T. J., Blom-Hoffman, J., Clarke, A. T., Riley-Tillman, T. C., Kelleher, C., & Manz, P. H. (2005). Reconceptualizing intervention integrity: A partnership-based framework for linking research with practice. *Psychology in the Schools, 42*, 495–507. doi:10.1002/pits.20087
- Reinke, W. M., Herman, K. C., & Stormont, M. (2012). Classroom-level positive behavior supports in schools implementing SW-PBIS: Identifying areas for enhancement. *Journal of Positive Behavior Interventions*. Advance online publication. doi:10.1177/1098300712459079
- Reinke, W. M., Herman, K. C., Stormont, M., Newcomer, L., & David, K. (2013). Illustrating the multiple facets and levels of fidelity of implementation to a educator classroom management intervention. *Administration and Policy in Mental Health and Mental Health Services Research, 40*, 494–506. doi:10.1007/s10488-013-0496-2
- Reinke, W. M., Lewis-Palmer, T., & Merrell, K. (2008). The classroom check-up: A classwide teacher consultation model for increasing praise and decreasing disruptive behavior. *School Psychology Review, 37*, 315–332.
- Roca, J. V., & Gross, A. M. (1996). Report-do-report: Promoting setting and setting-time generalization. *Education & Treatment of Children, 19*, 408–424.

- Rosenberg, M. S. (1986). Maximizing the effectiveness of structured classroom management programs: Implementing rule-review procedures with disruptive and distractible students. *Behavior Disorders, 11*, 239–248. doi:10.1177/019874298601100405
- Scott, T. M., Alter, P. J., & Hirn, R. G. (2011). An examination of typical classroom context and instruction for students with and without behavior disorders. *Education and Treatment of Children, 34*, 619–641. doi:10.1353/etc.2011.0039
- Sharpe, T., Brown, M., & Crider, K. (1995). The effects of a sportsmanship curriculum intervention on generalized positive social behavior of urban elementary school students. *Journal of Applied Behavior Analysis, 28*, 401–416. doi:10.1901/jaba.1995.28-401
- Simmons, D. C., Fuchs, L. S., & Fuchs, D. (1995). Effects of explicit teaching and peer tutoring on the reading achievement of learning-disabled and low-performing students in regular classrooms. *Elementary School Journal, 95*, 387–408. doi:10.1086/461851
- Simonsen, B., Eber, L., Black, A. C., Sugai, G., Lewandowski, H., Sims, B., & Myers, D. (2012). Illinois statewide positive behavioral interventions and supports: Evolution and impact on student outcomes across years. *Journal of Positive Behavior Interventions, 14*, 5–16. doi:10.1177/1098300711412601
- Simonsen, B., Fairbanks, S., Briesch, A., Myers, D., & Sugai, G. (2008). Evidence based practices in classroom management: Considerations for research to practice. *Education and Treatment of Children, 31*, 351–380. doi:10.1353/etc.0.0007
- Simonsen, B., Freeman, J., Dooley, K., Maddock, E., Kern, L., & Myers, D. (2017). Effects of targeted professional development on teachers' specific praise rates. *Journal of Positive Behavior Interventions, 19*, 37–47. doi:10.1177/1098300716637192
- Simonsen, B., MacSuga-Gage, A. S., Briere, D. E., Freeman, J., Myers, D., Scott, T., & Sugai, G. (2014). Multi-tiered support framework for educators' classroom management practices: Overview and case study of building the triangle for educators. *Journal of Positive Behavior Interventions, 16*, 179–190. doi:10.1177/1098300713484062
- Simonsen, B., Myers, D., & DeLuca, C. (2010). Teaching educators to use prompts, opportunities to respond, and reinforcement. *Educator Education in Special Education, 33*, 300–318. doi:10.1177/0888406409359905

- Simonsen, B., & Sugai, G. (2007). Using school-wide data systems to make decisions efficiently and effectively. *School Psychology Forum, 1*, 46–58.
- Skiba, R., Ormiston, H., Martinez, S., & Cummings, J. (2016). Teaching the social curriculum: Classroom management as behavioral instruction. *Theory into Practice, 55*, 120–128. doi:10.1080/00405841.2016.1148990
- Sprague, J. R., & Thomas, T. (1997). The effects of neutralizing routine on problem behavior performance. *Journal of Behavioral Education, 7*, 325–334. doi:10.1023/A:1022827622948
- Stough, L. M. (2006). The place of classroom management and standards in educator education. In C. M. Evertson & C. S. Weinstein (Eds.), *Handbook of classroom management: Research, practice, and contemporary issues* (pp. 909–923). Mahwah, NJ: Lawrence Erlbaum.
- Sugai, G., O’Keeffe, B., & Fallon, L. (2012). A contextual consideration of culture and school-wide positive behavior support. *Journal of Positive Behavior Interventions, 14*, 197–208. doi:10.1177/1098300711426334
- Susman, E. J., Huston-Stein, A., & Friedrich-Cofer, L. (1980). Relation of conceptual tempo to social behaviors of head start children. *The Journal of Genetic Psychology, 137*, 17–20. doi:10.1080/00221325.1980.10532798
- Sutherland, K. S., Alder, N., & Gunter, R. L. (2003). The effect of varying rates of opportunities to respond to academic requests on the behavior of students with EBD. *Journal of Emotional and Behavioral Disorders, 11*, 239–248. doi:10.1177/10634266030110040501
- Sutherland, K. S., & Wehby, J. H., (2001). The effect of self-evaluation on teaching behavior in classrooms for students with emotional and behavioral disorders. *Journal of Special Education, 35*, 2–8. doi:10.1177/002246690103500306
- Sutherland, K. S., Wehby, J. H., & Copeland, S. R. (2000). Effect of varying rates of behavior-specific praise on the on-task behavior of students with EBD. *Journal of Emotional and Behavior Disorders, 8*, 2–8. doi:10.1177/106342660000800101
- Walker, H. M., Severson, H. H., & Feil, E. G. (2014). *Systematic screening for behavior disorders* (SSBD; 2nd Ed.). Eugene, OR: Pacific Northwest Publishing.

- Wehby, J. H., Maggin, D. M., Moore Partin, T. C., & Robertson, R. (2012). The impact of working alliance, social validity, and teacher burnout on implementation fidelity of the good behavior game. *School Mental Health, 4*, 22–33. doi:10.1007/s12310-011-9067-4
- Wei, R. C., Darling-Hammond, L., & Adamson, F. (2010). *Professional development in the United States: Trends and challenges*. Dallas, TX: National Staff Development Council.
- Weinstein, C. S., Curran, M., & Tomlinson-Clarke, S. (2003). Culturally responsive classroom management: Awareness into action. *Theory into Practice, 42*, 269–276. doi:10.1207/s15430421tip4204_2
- West, R. R., & Sloane, H. N. (1986). Teacher presentation rate and point delivery rate: Effects on classroom disruption, performance, accuracy, and response rate. *Behavior Modification, 10*, 267–286. doi:10.1177/01454455860103001
- Wilcox, R., Newman, V., & Pitchford, N. (1988). Compliance training with nursery children. *Association of Educational Psychologists Journal, 4*, 105–107.
- Witt, J. C., & Elliott, S. N. (1985). Acceptability of classroom intervention strategies. In T. R. Kratochwill (Ed.), *Advances in school psychology* (Vol. 4, pp. 251–288). Mahwah, NJ: Lawrence Erlbaum.
- Witt, J. C., Martens, B. K., & Elliot, S. N. (1984). Factors affecting educators' judgements of the acceptability of behavioral interventions: Time involvement, behavior problem severity, and type of intervention. *Behavior Therapy, 15*, 204–209. doi:10.1016/S0005-7894(84)80022-2
- Wolf, M. M. (1978). Social validity: The case for subjective measurement or how applied behavior analysis is finding its heart. *Journal of Applied Behavior Analysis, 11*, 203–214. doi:10.1901/jaba.1978.11-203
- Wolford, P. L., Heward, W. L., & Alber, S. R. (2001). Teaching middle school students with learning disabilities to recruit peer assistance during cooperative learning group activities. *Learning Disabilities Research & Practice, 16*, 161–173. doi:10.1111/0938-8982.00017
- Yawkey, T. D., (1971). Conditioning independent work behavior in reading with seven-year-old children in a regular early childhood classroom. *Child Study Journal, 2*, 23–34.

- Yeaton, W. H., & Sechrest, L. (1981). Critical dimensions in the choice and maintenance of successful treatments: Strength, integrity, and effectiveness. *Journal of Consulting and Clinical Psychology, 49*, 156–167. doi:10.1037/0022-006X.49.2.156