

Hawai'i State Department of Education



2023 DATA BOOK

Office of the Superintendent • 34th Annual Report • April 2024



**The Honorable Joshua Green, M.D.
Governor, State of Hawaii**

BOARD OF EDUCATION

Warren Haruki, Chairperson
Kaimana Bacarse, Vice Chairperson

William "Bill" Arakaki	Makana McClellan
Shanty Asher	Lauren Moriarty
Kahele Dukelow	Ahryanna McGuirk (Student Representative)
Ken Kuraya	Colonel Angenene L. Robertson (Military Liaison)

DEPARTMENT OF EDUCATION

Keith T. Hayashi, Superintendent of Education
Heidi Armstrong, Deputy Superintendent
Curt Otaguro, Deputy Superintendent
Tammi Oyadomari-Chun, Ed.D., Deputy Superintendent
Sean Bacon, Assistant Superintendent
Office of Talent Management
Brian Hallett, Assistant Superintendent & Chief Financial Officer
Office of Fiscal Services
Audrey Hidano, Interim Assistant Superintendent
Office of Facilities and Operations
Elizabeth Higashi, Interim Assistant Superintendent
Office of Strategy, Innovation and Performance
Annie Kalama, Assistant Superintendent
Office of Student Support Services
Michael Otsuji, Assistant Superintendent & Chief Information Officer
Office of Information Technology Services
Teri Ushijima, Ed.D., Assistant Superintendent
Office of Curriculum and Instructional Design

Rochelle Mahoe, Ph.D.
Farrington-Kaiser-Kalani Complex Area Superintendent
Linell Dilwith
Kaimuki-McKinley-Roosevelt Complex Area Superintendent
John Erickson
Aiea-Moanalua-Radford Complex Area Superintendent
Robert Davis
Leilehua-Mililani-Waialua Complex Area Superintendent
Sean Tajima
Campbell-Kapolei Complex Area Superintendent
Disa Hauge
Nanakuli-Waianae Complex Area Superintendent
Richard Fajardo
Pearl City-Waipahu Complex Area Superintendent

Matthew Ho
Castle-Kahuku Complex Area Interim Superintendent
Lanelle Hibbs
Kailua-Kalaheo Complex Area Superintendent
Stacey Bello
Kau-Keaau-Pahoa Complex Area Superintendent
Esther Kanehailua
Hilo-Waiakea Complex Area Superintendent
Janette Snelling
Honokaa-Kealahou-Kohala-Konawaena Complex Area Superintendent
Desiree Sides
Baldwin-Kekaulike-Kulanihako-Maui Complex Area Superintendent
Rebecca Winkie, Ph.D.
Hana-Lahainaluna-Lanai-Molokai Complex Area Superintendent

Daniel Hamada
Kapaa-Kauai-Waimea Interim Complex Area Superintendent

Contents

Data Insights	1
Students & Schools	1
Progress & Outcomes	1
Resources & Support	1
At-A-Glance	2
Table 1. Official Fall Enrollment for Grades K to 12, Public and Private Schools.....	2
Figure 1. Percent of Public School Students With Special Needs, Unduplicated Count	2
Table 2. Department of Education Teacher Credentials	2
Table 3. Funding By Source and Year (In Millions)	3
Table 4. Safety and Well-Being.....	3
Table 5. Hawaii Statewide Assessment Program, Percent Meeting Standard.....	3
Table 6. Hawaii Statewide Assessment Program, Percent in Each Standard Level	4
Figure 2. Hawaii Statewide Assessment Program, Percent Meeting Standard in Language Arts.....	5
Figure 3. Hawaii Statewide Assessment Program, Percent Meeting Standard in Mathematics.....	5
Figure 4. Hawaii Statewide Assessment Program, Percent Meeting Standard in Science	5
Table 7. Four-Year Graduation and Dropout Rates.....	6
Table 8. High School Diplomas.....	6
Table 9. Honors Recognition Certificates	6
Table 10. Advanced Placement (AP) Program.....	6
Profiles and Trends	7
Table 11. Number of Public Schools (and Percentage of Total Schools by Type)	7
Table 12. Student Enrollment.....	7
Table 13. Progress and Completion.....	7
Table 14. Staff, Full-Time Equivalent Positions.....	8

Table 15.	State Demographics.....	8
School Finance		9
Table 16.	State School Budget	9
Table 17.	Key Finance Indicators.....	9
Figure 5.	Percentage of State & Local Expenditures per Capita Supporting Public Schools	10
Educational Assessments		10
Table 18.	National Assessment of Educational Progress (NAEP)	10
Figure 6.	National Assessment of Educational Progress (NAEP), Percent Proficient & Advanced in Grade 4 Reading and Mathematics	11
Figure 7.	National Assessment of Educational Progress (NAEP), Percent Proficient & Advanced in Grade 8 Reading and Mathematics	11
Table 19.	Hawaii Statewide Assessment Program, Percent Meeting Standard.....	12
Table 20.	Students by Complex in SY 2022-23.....	13
Table 21.	Teachers by Complex in SY 2022-23.....	14
Table 22.	SY 2022-23 Wellness Indicators by Complex.....	15
Table 23.	Percent Meeting Standard on the Hawaii Statewide Assessment Program English Language Arts Assessments by Grade and Complex for SY 2022-23.....	16
Table 24.	Percent Meeting Standard on the Hawaii Statewide Assessment Program Mathematics Assessments by Grade and Complex for SY 2022-23.....	17
Table 25.	Percent Meeting Standard on the Hawaii Statewide Assessment Program Science Assessments by Grade and Complex for SY 2022- 23.....	18
Appendices		19
Appendix A.	Glossary.....	19
Appendix B.	References and Resources.....	23
Appendix C.	Supplemental Data Tables.....	26

Students & Schools

New Complex in Maui

- The opening of Kulanihako'i High School in school year (SY) 2022-23 established a new complex within the Baldwin-Kekaulike-Kulanihako'i-Maui Complex Area.

Enrollment

- Total K-12 student enrollment (public and private) across the state continued to decrease over the last two (2) years from 205,010 students in SY 2020-21 to 199,184 students in SY 2022-23. (Reference: Table 1, page 1.)
- Although enrollment has decreased, the distribution between department (84.6%), charter (7.1%), and private (15.3%) schools remained stable from SY 2021-22 to SY 2022-23. (Reference: Table 1, page 1.)
- There was no change to the percentage of students needing additional support from SY 2021-22 to SY 2022-23, with more than half (54%) of our students identified as economically disadvantaged, special education, multiple special needs, Section 504, and/or English Learners. (Reference: Figure 1, page 2.)

Accomplishments

- Graduation rates remained relatively stable, with a slight decrease from 85.9% in SY 2020-21 to 85.4% in SY 2021-22, followed by a small increase to 85.7% in SY 2022-23. (Reference: Table 7, page 6.)
- Dropout rates fluctuated slightly, starting at 10.9% in SY 2020-21, increasing from 11.6% in SY 2021-22, and then decreasing to 11.1% in SY 2022-23. (Reference: Table 7, page 6.)
- Honors Recognition Certificates earned have increased from SY 2021-22 in all certificate categories: Academic Honors (24.9%), CTE Honors (21.2%), and STEM Honors (4.4%). (Reference: Table 9, page 6.)
- Advanced Placement (AP) programs have seen an increase in the number of students for all areas measured. (Reference: Table 10, page 6.)

Progress & Outcomes

Academic Assessments – Hawaii State Assessment Program (HSAP)

- The overall percentage of students proficient for all schools remained the same for Language and Science, 52% and 40% respectively. The percentage of students proficient in Mathematics increased by 2 percentage points from 38% to 40%. (Reference: Tables 5, page 3.)

National Assessment of Educational Progress (NAEP)

- In 2022, Hawaii's 4th grade students surpassed the national average in both reading (35% vs 32%) and mathematics (37% vs 35%). Although 8th grade students surpassed the national average in reading (31% vs 29%), they performed below the national average in mathematics (22% vs 26%). (References: Table 18, Figures 6 & 7, pages 10 and 11 respectively.)

Teacher Credentials and Experience

- 95% of our teachers are fully licensed to teach and the average years of experience for teachers is 12.8 years. (Reference: Tables 2 and 21, pages 2 and 14 respectively.)

Safety and Well-Being

- In SY 2022-23 the positive response rates for student safety were 73% (elementary), 60% (middle), and 58% (high school). This resulted in a three and two percentage point increase for our elementary and middle schools, respectively, while the high schools' positive response rate decreased by a percentage point. (Reference: Table 4, page 3.)
- Through the annual School Quality Survey, 74% of teachers have reported a positive response to their well-being. In addition, 73% of teachers responded positively regarding their safety. (Reference: Table 4, page 3.)

Resources & Support

Per Pupil Expenditures

- Hawaii's per pupil expenditure for SY 2022-23 is \$16,564, increasing from the previous year per pupil expenditure of \$16,132 – a difference of \$432. Hawaii was 50th (last) when ranked by percent state & local expenditure for public education (per capita). (Reference Table 17, page 9.)

At-A-Glance

Note: Unless otherwise noted, data are about “public schools” and represents both Department and Charter schools; percentages with one decimal place have been truncated at the first decimal place.

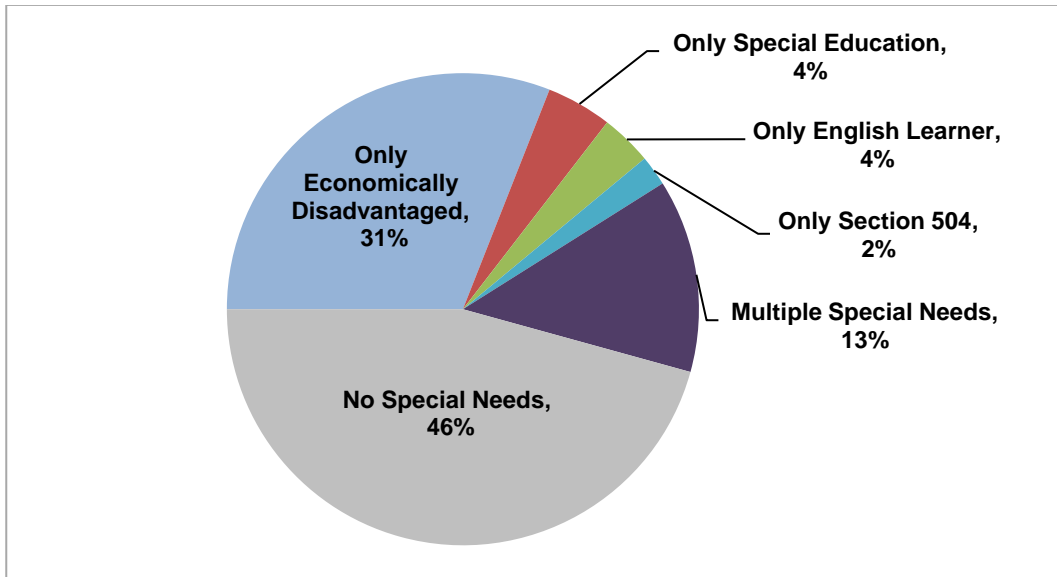
Table 1. Official Fall Enrollment for Grades K to 12, Public and Private Schools

	2020-21	2021-22	2022-23
Public Schools	174,704	171,600	168,634
% of total enrollment	85.2%	84.6%	84.6%
Department Schools	162,491	159,503	156,518
% of public schools enrollment	93.0%	92.9%	92.8%
Charter Schools	12,213	12,097	12,116
% of public schools enrollment	6.9%	7.0%	7.1%
Private Schools	30,306	31,018	30,550
% of total enrollment	14.7%	15.3%	15.3%
Total	205,010	202,618	199,184

Note: Due to rounding, percentages may not total to 100%.

Sources: Hawaii State Department of Education: Office of Strategy, Innovation and Performance; Assessment and Accountability Branch; Hawaii Association of Independent Schools.

Figure 1. Percent of Public School Students With Special Needs, Unduplicated Count



Note: Graph represents student count as of 12/16/2022.

Source: Hawaii State Department of Education: Office of Strategy, Innovation and Performance; Assessment and Accountability Branch.

Table 2. Department of Education Teacher Credentials

	2020-21	2021-22	2022-23
Fully Licensed	96%	96%	95%
Advanced Degree	38%	39%	39%
5+ Years at the Same School	59%	60%	54%

Note: These figures do not include teachers at Charter schools.

Source: Hawaii State Department of Education: Office of Talent Management.

Table 3. Funding By Source and Year (In Millions)

	2020-21	2021-22	2022-23
Appropriated Funds	\$4,086	\$4,241	\$5,014
State			
General	\$2,914	\$2,956	\$3,863
Special	\$87	\$87	\$88
Trust	\$16	\$16	\$16
Federal	\$1,069	\$1,182	\$1,047

Note: Appropriated Funds include Executive Budget Bill appropriations and Federal fund ceiling increases for the DOE and Public Charter Schools plus expenditures made by Department of Budget & Finance (B&F) for both DOE and Public Charter schools related debt service and the employer's share of the cost of employees' retirement system and health insurance costs.

Source: Hawaii State Department of Education: Office of Fiscal Services.

Table 4. Safety and Well-Being

	2020-21	2021-22	2022-23
Students Not Suspended	100%	96%	96%
Safety % Positive Responses			
Students			
Elementary	71%	70%	73%
Middle	65%	58%	60%
High	66%	59%	58%
Teachers	75%	73%	73%
Well-Being % Positive Responses			
Teachers	74%	74%	74%

Note: Students Not Suspended does not include Charter schools.

Source: Hawaii State Department of Education: Office of Strategy, Innovation and Performance; Assessment and Accountability Branch.

Table 5. Hawaii Statewide Assessment Program, Percent Meeting Standard

	2020-21	2021-22	2022-23
Language Arts	50%	52%	52%
Mathematics	32%	38%	40%
Science	35%	40%	40%

Note: Results are based on **students enrolled for the school year.**

Language Arts and Mathematics assessments include the Smarter Balanced Assessment (SBA), HSA-Alternate (HSA-Alt) and Kaiapuni Assessment of Educational Outcomes (KAEO).

The Science assessment includes the HSA Science, Biology I End-of-Course Exam, HSA-Alt and KAEO. Beginning SY 2020-21, the Next Generation Science Standards (NGSS) replaced the Hawaii Content and Performance Standards III (HCPS III). This resulted in the elementary tested grade moving from 4 to 5. No changes were made to other tested grades (8 and high school [HS]).

Source: Hawaii State Department of Education: Office of Strategy, Innovation and Performance; Assessment and Accountability Branch.

Table 6. Hawaii Statewide Assessment Program, Percent in Each Standard Level

Language Arts								
Grade	2021-22				2022-23			
	Not Met	Nearly Met	Met	Exceeded	Not Met	Nearly Met	Met	Exceeded
3	29%	22%	22%	27%	30%	22%	21%	27%
4	30%	18%	23%	28%	30%	19%	23%	28%
5	27%	18%	28%	27%	28%	18%	27%	27%
6	27%	24%	30%	20%	26%	23%	29%	21%
7	26%	23%	34%	18%	27%	23%	32%	18%
8	25%	25%	33%	17%	26%	24%	32%	18%
11	17%	23%	33%	27%	19%	23%	32%	26%
Mathematics								
Grade	2021-22				2022-23			
	Not Met	Nearly Met	Met	Exceeded	Not Met	Nearly Met	Met	Exceeded
3	27%	22%	26%	25%	27%	22%	26%	26%
4	26%	29%	25%	20%	22%	28%	26%	23%
5	32%	26%	18%	24%	32%	24%	19%	24%
6	37%	28%	17%	18%	35%	27%	18%	20%
7	39%	28%	18%	15%	39%	27%	19%	15%
8	43%	26%	16%	15%	45%	24%	15%	16%
11	46%	28%	17%	8%	49%	26%	17%	8%
Science								
Grade	2021-22				2022-23			
	Not Met	Nearly Met	Met	Exceeded	Not Met	Nearly Met	Met	Exceeded
5	22%	34%	29%	15%	23%	31%	31%	15%
8	34%	27%	29%	10%	32%	28%	30%	10%
High School	33%	32%	25%	10%	36%	31%	23%	10%

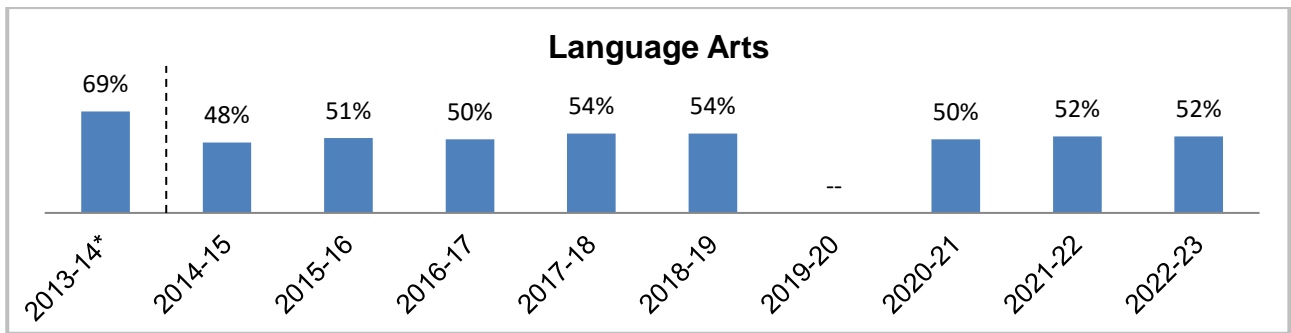
Note: Results are based on **students enrolled for the school year**.

Language Arts and Mathematics assessments include the SBA, HSA-Alt and KAEO.

The Science assessment includes the HSA Science, Biology I End-of-Course Exam, HSA-Alt and KAEO. Beginning SY 2020-21, the NGSS replaced the HCPS III. This resulted in the elementary tested grade moving from 4 to 5. No changes were made to other tested grades (8 and HS). The achievement rates for high school students are based on students who were administered either the Biology I End-of-Course Exam or the HSA-Alt for grade 11.

Source: Hawaii State Department of Education: Office of Strategy, Innovation and Performance; Assessment and Accountability Branch.

Figure 2. Hawaii Statewide Assessment Program, Percent Meeting Standard in Language Arts



Note: Due to the COVID-19 pandemic and subsequent ED waiver from testing, there are no results for SY 2019-20.

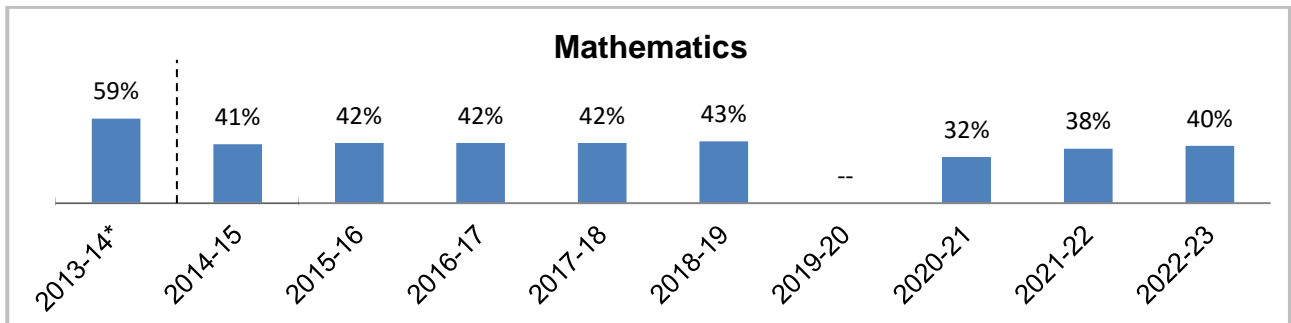
Results are based on **students enrolled for the school year**.

The Language Arts assessment includes the SBA, HSA-Alt and KAEO. Beginning 2014-15, the SBA was administered replacing the HSA summative assessment. This resulted in the HS tested grade moving from 10 to 11. No changes were made to other tested grades (grades 3 - 8).

*Result based on the SBA bridge test.

Source: Hawaii State Department of Education: Office of Strategy, Innovation and Performance; Assessment and Accountability Branch.

Figure 3. Hawaii Statewide Assessment Program, Percent Meeting Standard in Mathematics



Note: Due to the COVID-19 pandemic and subsequent ED waiver from testing, there are no results for SY 2019-20.

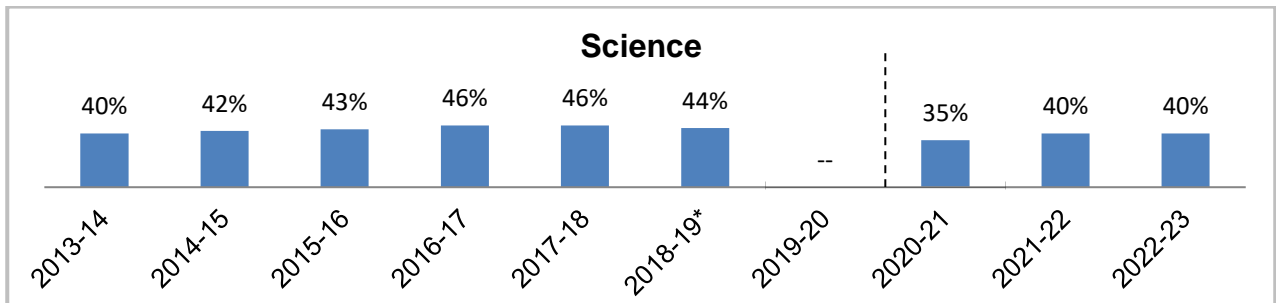
Results are based on **students enrolled for the school year**.

The Mathematics assessment includes the SBA, HSA-Alt and KAEO. Beginning 2014-15, the SBA was administered replacing the HSA summative assessment. This resulted in the HS tested grade moving from 10 to 11. No changes were made to other tested grades (grades 3 - 8).

*Result based on the SBA bridge test.

Source: Hawaii State Department of Education: Office of Strategy, Innovation and Performance; Assessment and Accountability Branch.

Figure 4. Hawaii Statewide Assessment Program, Percent Meeting Standard in Science



Note: Due to the COVID-19 pandemic and subsequent ED waiver from testing, there are no results for SY 2019-20.

Results are based on **students enrolled for the school year**.

The Science assessment includes the HSA Science, Biology I End-of-Course Exam, HSA-Alt and KAEO. Beginning SY 2020-21, the NGSS replaced the HCPS III. This resulted in the elementary tested grade moving from 4 to 5. No changes were made to other tested grades (8 and HS).

*Result based on the NGSS bridge test.

Source: Hawaii State Department of Education: Office of Strategy, Innovation and Performance; Assessment and Accountability Branch.

Table 7. Four-Year Graduation and Dropout Rates

	2020-21	2021-22	2022-23
Graduation	85.9%	85.4%	85.7%
Dropouts	10.9%	11.6%	11.1%
Others*	3.0%	2.8%	3.0%

Note: Due to rounding, percentages may not total to 100%.

*Others include high school completers who received a special education certificate of completion in lieu of a diploma and students who are still attending school and did not graduate within the four-year time frame.

Source: Hawaii State Department of Education: Office of Strategy, Innovation and Performance; Assessment and Accountability Branch.

Table 8. High School Diplomas

	2020-21	2021-22	2022-23
Regular Diploma	93.7%	94.4%	94.8%

Source: Hawaii State Department of Education: Office of Strategy, Innovation and Performance; Assessment and Accountability Branch.

Table 9. Honors Recognition Certificates

	2020-21	2021-22	2022-23
Academic Honors Recognition Certificate	25.6%	24.4%	24.9%
CTE Honors Recognition Certificate	17.3%	19.2%	21.2%
STEM Honors Recognition Certificate	4.3%	4.1%	4.4%

Note: Each percent is the percentage based on the number of students in the respective class.

Results include Department schools only - charter schools are not included.

Source: Hawaii State Department of Education: Office of Strategy, Innovation and Performance; Assessment and Accountability Branch.

Table 10. Advanced Placement (AP) Program

	2020-21*	2021-22	2022-23
Number of students enrolled in at least one AP course	6,104	5,789	6,178
Number of students who took at least one AP exam	5,979	5,594	6,020
Number of exams taken	9,231	8,461	9,112
Number of AP exam results with a score of 3 or higher	3,949	4,579	4,861
Percent of exams passed	43%	54%	53%

Notes: *Results may not be comparable due to lingering impacts of COVID-19 on AP testing availability.

Source: Hawaii State Department of Education: Office of Curriculum and Instructional Design.

Profiles and Trends

Table 11. Number of Public Schools (and Percentage of Total Schools by Type)

Type of School	2020-21		2021-22		2022-23	
Total	294	100%	294	100%	295	100%
Department Schools						
Elementary	168	57%	168	57%	168	57%
Middle/Intermediate	39	13%	39	13%	39	13%
High	33	11%	33	11%	34	12%
Multi-Level	16	5%	16	5%	16	5%
Special (HSDB*)	1	<1%	1	<1%	1	<1%
Charter Schools	37	13%	37	13%	37	13%
Complex Areas	15	n/a	15	n/a	15	n/a

Note: *Hawaii School for the Deaf & Blind.

Source: Hawaii State Department of Education: Office of Strategy, Innovation and Performance; Assessment and Accountability Branch.

Table 12. Student Enrollment

Enrollment	2020-21		2021-22		2022-23	
Official Enrollment Count	174,704	100%	171,600	100%	168,634	100%
K-6	94,292	54%	94,493	55%	92,556	55%
7-8	27,883	16%	24,348	14%	23,662	14%
9-12	52,529	30%	52,759	31%	52,416	31%
Special Education (SPED)	18,031	10%	17,979	10%	18,036	11%
English Learner (EL)	16,267	9%	16,608	10%	16,920	10%
Economically Disadvantaged*	87,879	50%	85,155	50%	80,681	48%

Note: Due to rounding, enrollment percentages may not total to 100%.

*Students whose family income qualifies them for assistance through the National School Lunch Program are included in the "economically disadvantaged" count. Also included are estimated counts of students based on the Community Eligibility Provision (CEP) requirements established by the U.S. Department of Agriculture.

Source: Hawaii State Department of Education: Office of Strategy, Innovation and Performance; Assessment and Accountability Branch.

Table 13. Progress and Completion

	2020-21	2021-22	2022-23
Daily Average Attendance Rates			
Elementary	93.6%	88.9%	91.3%
Middle/Intermediate	93.5%	90.0%	91.5%
High	91.5%	89.3%	90.2%
Multi-Level	89.7%	84.9%	87.7%
Charter	94.8%	91.3%	91.0%
Retention Rates			
Elementary	<0.5%	<0.5%	<0.5%
Middle/Intermediate	0.8%	0.5%	<0.5%
Four-Year Graduation and Dropout Rates			
Graduation	85.9%	85.4%	85.7%
Dropouts	10.9%	11.6%	11.1%
Others*	3.0%	2.8%	3.0%

Note: Due to rounding, Four-Year Graduation and Dropout percentages may not total to 100%.

*Others include high school completers who received a special education certificate of completion in lieu of a diploma and students who are still attending school and did not graduate within the four-year time frame.

Source: Hawaii State Department of Education: Office of Strategy, Innovation and Performance; Assessment and Accountability Branch.

Table 14. Staff, Full-Time Equivalent Positions

Positions	2020-21	2021-22	2022-23
Teachers			
Classroom Teachers	11,837.9	11,730.7	11,692.6
Librarians	114.0	87.5	88.5
Counselors	659.0	646.3	665.4
Administrators			
School	735.0	705.5	710.7
State & Complex Area	360.0	358.0	368.0
Other Support Staff	9,245.7	9,107.7	9,077.9
Total	22,951.6	22,635.7	22,603.1

Source: Hawaii State Department of Education: Office of Strategy, Innovation and Performance; Assessment and Accountability Branch.

Table 15. State Demographics

Census Data	2020 Est.	2021 Est.	2022 Est.
Populations	1,420,074	1,453,498	1,450,589
Youth Age Under 5 Years	88,179	87,767	84,552
Youth Age 5-9	84,349	86,980	84,983
Youth Age 10-14	83,438	88,005	87,743
Youth Age 15-19	76,036	79,517	78,904
Median Age, in Years	39.4	39.6	39.9
Households			
Total	467,932	478,413	483,906
Families	324,482	330,912	332,605
Avg. Family Size	3.50	3.51	3.47
Income*			
Median Family Income	\$97,813	\$103,593	\$111,678
Per Capita Income	\$37,013	\$39,045	\$42,683
Poverty, Families In	6.3%	6.5%	6.5%
Educational Attainment			
Percent High School or Higher	92.5%	92.7%	92.7%
Percent 4-yr Degree or Higher	33.6%	34.3%	34.7%

Note: Percentage figures are rounded at the first decimal place.

*Income figures are reported in inflation adjusted dollars, using 5-year estimates.

Source: U.S. Census Bureau; American Community Survey.

School Finance

Table 16. State School Budget

	2020-21	2021-22	2022-23
APPROPRIATED FUNDS (millions)			
State			
General	\$2,914	\$2,956	\$3,863
Special	\$87	\$87	\$88
Trust	\$16	\$16	\$16
Federal	\$1,069	\$1,182	\$1,047
TOTAL	\$4,086	\$4,241	\$5,014
EXPENDITURES AND ENCUMBRANCES (millions)			
State			
General	\$2,819	\$2,893	\$3,510
Special	\$20	\$22	\$34
Trust	\$4	\$4	\$5
Federal	\$375	\$491	\$436
TOTAL	\$3,218	\$3,410	\$3,985

Note: Appropriated Funds include Executive Budget Bill appropriations and Federal fund ceiling increases for the DOE and Public Charter Schools plus expenditures made by Department of Budget & Finance (B&F) for both DOE and Public Charter schools related debt service and the employer's share of the cost of employees' retirement system and health insurance costs.

Expenditures and encumbrances for the DOE and Public Charter Schools.

Source: Hawaii State Department of Education: Office of Fiscal Services.

Table 17. Key Finance Indicators

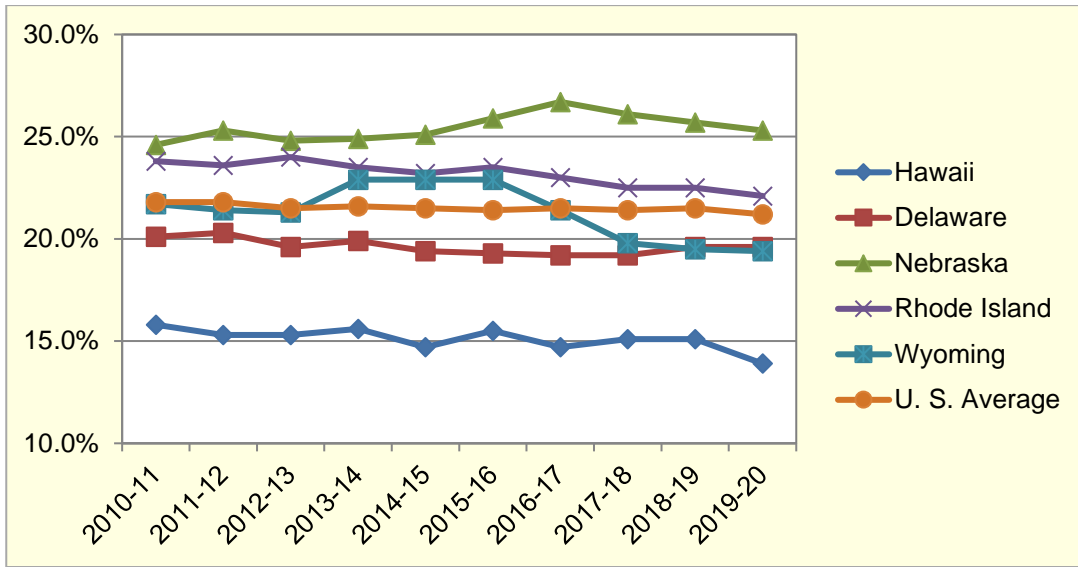
	2017-18	2018-19	2019-20
Per pupil expenditure	\$15,242	\$16,132	\$16,564
Percent state & local expenditures for public education (per capita)	15.1%	15.1%	13.9%
Rank*	50th	50th	50th

Note: Data reported was the most current available at the time of publication.

**Rank is determined by comparing the "Percent state and local expenditures for public education (per capita)" of Hawaii to that of the other 49 states.*

Sources: U.S. Census Bureau; National Center for Education Statistics.

Figure 5. Percentage of State & Local Expenditures per Capita Supporting Public Schools



Note: Comparisons are made with states most similar to Hawaii on measures directly related to school finance. Measures include K-12 enrollment, population, per capita income, per capita state and local revenue, and per capita state and local expenditures. Data reported was the most current data available at the time of publication.

Source: Digest of Education Statistics, National Center for Education Statistics, ED.

Educational Assessments

Table 18. National Assessment of Educational Progress (NAEP)

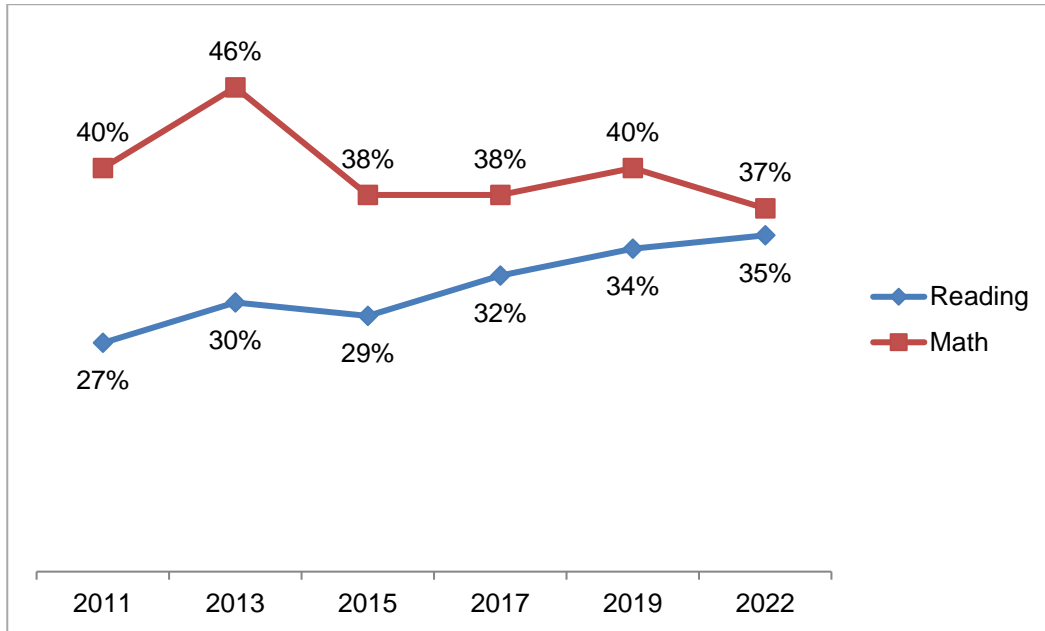
NAEP Assessment	2017		2019		2022	
	<i>(Percent Proficient & Advanced)</i>					
	Hawaii	Nation	Hawaii	Nation	Hawaii	Nation
Reading						
Grade 4	32%	36%	34%	34%	35%	32%
Grade 8	30%	36%	29%	32%	31%	29%
Mathematics						
Grade 4	38%	40%	40%	40%	37%	35%
Grade 8	27%	34%	28%	33%	22%	26%
Science						
Grade 4	--	--	--	--	--	--
Grade 8	--	--	--	--	--	--

Note: Data reported was the most current data available at the time of publication.

The NAEP assessment is administered every two years. Testing was not provided in 2021, but resumed in 2022.

Source: Hawaii State Department of Education: Office of Strategy, Innovation and Performance; Assessment and Accountability Branch.

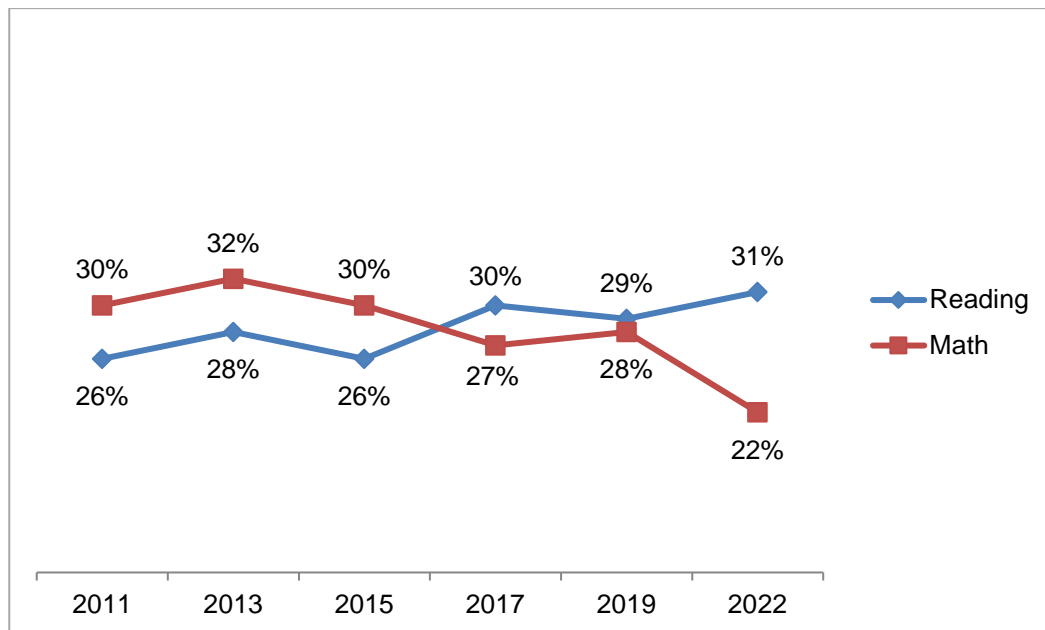
Figure 6. National Assessment of Educational Progress (NAEP), Percent Proficient & Advanced in Grade 4 Reading and Mathematics



Note: Data reported was the most current data available at the time of publication. The NAEP assessment is administered every two years. Testing was not provided in 2021, but resumed in 2022.

Source: Hawaii State Department of Education: Office of Strategy, Innovation and Performance; Assessment and Accountability Branch.

Figure 7. National Assessment of Educational Progress (NAEP), Percent Proficient & Advanced in Grade 8 Reading and Mathematics



Note: Data reported was the most current data available at the time of publication. The NAEP assessment is administered every two years. Testing was not provided in 2021, but resumed in 2022.

Source: Hawaii State Department of Education: Office of Strategy, Innovation and Performance; Assessment and Accountability Branch.

Table 19. Hawaii Statewide Assessment Program, Percent Meeting Standard

Grade	2018-19			2020-21		
	All Schools	Department Schools Only	Charter Schools Only	All Schools	Department Schools Only	Charter Schools Only
English Language Arts						
3	52.3%	52.6%	48.5%	42.9%	42.9%	43.3%
4	51.5%	52.0%	44.0%	46.2%	46.5%	41.8%
5	56.7%	57.2%	49.5%	50.6%	50.7%	48.6%
6	52.4%	52.3%	54.0%	46.5%	46.5%	46.2%
7	52.8%	52.6%	56.1%	51.8%	51.7%	52.7%
8	51.5%	51.4%	53.2%	51.0%	50.8%	53.9%
11	58.7%	58.7%	60.1%	64.4%	64.5%	62.2%
Mathematics						
3	55.7%	56.4%	45.3%	40.5%	40.7%	36.6%
4	48.1%	49.0%	35.0%	36.1%	36.3%	33.2%
5	44.1%	44.8%	32.5%	31.8%	32.1%	27.1%
6	40.6%	41.1%	34.5%	28.9%	29.3%	25.2%
7	38.2%	38.5%	34.3%	29.3%	29.4%	27.6%
8	37.8%	38.4%	30.1%	24.7%	24.8%	24.2%
11	30.1%	30.2%	27.1%	27.9%	28.1%	24.5%
Science						
4	56.7%	57.1%	50.7%	--	--	--
5	--	--	--	36.6%	36.6%	37.4%
8	40.7%	40.5%	44.5%	33.0%	32.6%	38.6%
HS	34.7%	34.6%	36.2%	34.0%	33.9%	36.8%
Grade	2021-22			2022-23		
	All Schools	Department Schools Only	Charter Schools Only	All Schools	Department Schools Only	Charter Schools Only
English Language Arts						
3	49.1%	49.3%	45.0%	48.5%	49.1%	39.8%
4	51.3%	51.8%	43.1%	50.9%	51.4%	44.7%
5	54.9%	55.3%	47.9%	54.1%	54.2%	51.4%
6	49.8%	50.1%	46.1%	50.4%	50.7%	47.3%
7	51.6%	52.0%	48.4%	50.5%	50.5%	50.1%
8	50.0%	50.4%	45.8%	49.7%	49.9%	48.1%
11	59.6%	59.4%	63.4%	58.2%	58.3%	57.5%
Mathematics						
3	50.9%	51.6%	39.9%	51.6%	52.4%	40.0%
4	45.9%	46.2%	39.8%	49.7%	50.4%	39.4%
5	41.6%	42.1%	33.8%	43.2%	43.6%	36.9%
6	35.0%	35.6%	28.3%	38.2%	38.9%	31.4%
7	33.2%	33.9%	25.9%	33.5%	34.1%	27.7%
8	30.7%	31.3%	23.5%	30.6%	31.6%	20.5%
11	25.8%	25.9%	23.0%	25.0%	25.3%	19.6%
Science						
5	44.4%	44.6%	40.5%	45.6%	45.7%	43.3%
8	38.7%	39.2%	33.3%	39.9%	40.3%	35.6%
HS	35.2%	35.3%	32.0%	33.1%	33.2%	30.7%

Note: Due to the COVID-19 pandemic and subsequent ED waiver from testing, there are no results for SY 2019-20.

Achievement rates for English Language Arts and Mathematics are based on **all students tested** who were administered either the SBA or HSA-Alt in that subject.

Achievement rates for Science are based on **all students tested** who were administered either the HSA Science, HSA-Alt, or Biology I End-of-Course Exam. Beginning SY 2020-21, the NGSS replaced the HCPS III. This resulted in the elementary tested grade moving from 4 to 5. No changes were made to other tested grades (8 and HS). The achievement rates for high school students are based on students who were administered either the Biology I End-of-Course Exam or the HSA-Alt for grade 11.

SY 2018-19 Science results based on the NGSS bridge test.

Source: Hawaii State Department of Education: Office of Strategy, Innovation and Performance; Data Governance and Analysis Branch.

Table 20. Students by Complex in SY 2022-23

	Enrollment*	Economically Disadvantaged	Special Education	EL	Graduated On-Time
ALL SCHOOLS	168,634	80,681	18,036	16,920	86%
<i>Department Schools</i>	156,518	74,998	16,891	16,556	86%
HONOLULU: 2 Complex Areas / 6 Complexes					
Farrington	6,608	66%	9%	31%	71%
Kaiser	3,492	14%	8%	5%	93%
Kalani	4,195	20%	8%	11%	94%
Kaimuki	3,328	62%	12%	30%	82%
McKinley	3,845	65%	10%	31%	75%
Roosevelt	5,633	37%	8%	10%	89%
CENTRAL: 2 Complex Areas / 6 Complexes					
Aiea	3,363	51%	11%	13%	90%
Moanalua	4,876	28%	8%	6%	96%
Radford	5,069	29%	11%	5%	93%
Leilehua	6,419	52%	13%	8%	90%
Mililani	7,159	22%	10%	2%	95%
Waialua	1,284	46%	12%	4%	91%
LEEWARD: 3 Complex Areas / 6 Complexes					
Campbell	10,240	38%	9%	8%	86%
Kapolei	6,372	42%	11%	5%	84%
Pearl City	5,662	33%	9%	8%	88%
Waipahu	7,580	55%	9%	21%	86%
Nanakuli	2,039	82%	18%	6%	84%
Waianae	4,779	80%	16%	6%	78%
WINDWARD: 2 Complex Areas / 4 Complexes					
Castle	4,194	49%	15%	3%	84%
Kahuku	3,113	50%	12%	3%	89%
Kailua	2,381	53%	17%	3%	82%
Kalaheo	3,651	25%	11%	4%	94%
HAWAII: 3 Complex Areas / 9 Complexes					
Hilo	4,047	65%	14%	7%	90%
Waiakea	3,521	51%	12%	6%	91%
Kau	943	92%	8%	24%	94%
Keaau	3,090	82%	13%	8%	87%
Pahoa	1,651	n/a	17%	8%	81%
Honokaa	1,699	59%	12%	7%	85%
Kealakehe	4,092	55%	10%	21%	75%
Kohala	754	54%	13%	7%	93%
Konawaena	3,148	57%	8%	15%	74%
MAUI: 2 Complex Areas / 8 Complexes					
Baldwin	3,935	46%	9%	8%	77%
Kekaulike	4,017	52%	13%	4%	79%
Kulanihakoï**	1,592	51%	12%	15%	n/a
Maui	5,102	43%	9%	17%	83%
Hana	378	61%	14%	0%	83%
Lahainaluna	2,967	48%	9%	15%	82%
Lanai	560	48%	14%	16%	90%
Molokai	931	83%	14%	2%	89%
KAUAI: 1 Complex Area / 3 Complexes					
Kapaa	2,867	44%	11%	6%	94%
Kauai	3,507	48%	9%	10%	89%
Waimea	2,382	51%	10%	8%	84%
SPECIAL					
Hawaii School for Deaf & Blind	53	57%	n/a	32%	n/a
Charter Schools	12,116	5,683	1,145	364	88%

Note: *Based on the Official Enrollment Count for Fall 2022.

**New Complex Kulanihakoï.

Source: Hawaii State Department of Education: Office of Strategy, Innovation and Performance; Assessment and Accountability Branch.

Table 21. Teachers by Complex in SY 2022-23

		Classroom Teachers (Headcount)	Fully Licensed	5+ Years at Same School	Advanced Degree	Average Years Teaching Experience
ALL SCHOOLS		11,516	10,956	6,141	4,475	12.7
Department Schools		11,001	10,477 95%	5,940 54%	4,243 39%	12.8
HONOLULU	Farrington	492	96%	60%	36%	14.6
	Kaiser	232	98%	50%	43%	12.5
	Kalani	270	98%	59%	49%	14.3
	Kaimuki	268	95%	62%	41%	15.7
	McKinley	277	95%	57%	40%	14.1
	Roosevelt	372	95%	57%	34%	14.5
CENTRAL	Aiea	238	95%	53%	37%	12.9
	Moanalua	308	97%	57%	48%	13.0
	Radford	360	96%	57%	40%	13.2
	Leilehua	495	92%	52%	43%	12.5
	Mililani	467	99%	61%	43%	14.8
	Waialua	93	98%	54%	48%	13.8
LEEWARD	Campbell	660	95%	52%	35%	11.7
	Kapolei	424	96%	44%	37%	11.7
	Pearl City	398	96%	64%	31%	15.1
	Waipahu	526	98%	61%	35%	13.2
	Nanakuli	153	97%	56%	42%	12.6
	Waianae	381	83%	48%	30%	10.1
WINDWARD	Castle	328	95%	55%	32%	13.5
	Kahuku	233	97%	57%	34%	13.5
	Kailua	226	94%	57%	36%	14.0
	Kalaheo	250	95%	40%	40%	10.6
HAWAII	Hilo	294	99%	55%	39%	13.6
	Waiakea	241	95%	61%	41%	14.7
	Kau	75	92%	41%	33%	7.9
	Keaau	212	95%	58%	38%	13.4
	Pahoa	122	92%	43%	48%	9.5
	Honokaa	115	98%	50%	46%	12.1
	Kealakehe	274	91%	40%	42%	9.8
	Kohala	60	92%	37%	42%	8.6
	Konawaena	206	94%	44%	39%	10.2
MAUI	Baldwin	258	94%	52%	37%	13.0
	Kekaulike	267	95%	53%	40%	12.5
	Kulanihakoï*	130	95%	34%	38%	9.0
	Maui	322	95%	56%	35%	12.6
	Hana	30	90%	50%	37%	11.7
	Lahainaluna	203	95%	53%	44%	10.1
	Lanai	48	96%	48%	35%	10.2
	Molokai	81	98%	52%	42%	13.3
KAUAI	Kapaa	182	99%	54%	37%	13.3
	Kauai	248	96%	62%	39%	13.0
	Waimea	166	96%	51%	40%	11.8
SPECIAL						
Hawaii School for Deaf & Blind		16	88%	25%	81%	9.4
Charter Schools		515	479 93%	201 39%	232 45%	9.5

Note: *New Complex Kulanihakoï.

Source: Hawaii State Department of Education: Office of Strategy, Innovation and Performance; Assessment and Accountability Branch.

Table 22. SY 2022-23 Wellness Indicators by Complex

	Number of Participating Schools	Percent of Participation	Schools with a Wellness Committee	All Food & Beverages Sold Met Compliance	Required Health Ed Classes Met Recommended Minutes	Required PE Classes Met Recommended Minutes	≥20 Minutes Recess Per Day	Average % of Wellness Guidelines Met
STATE OVERALL	255	99%	70%	47%	75%	88%	95%	81%
Farrington-Kaiser-Kalani	23	92%	61%	39%	78%	87%	96%	81%
Farrington	10	83%	50%	40%	90%	90%	100%	76%
Kaiser	6	100%	83%	33%	67%	83%	100%	86%
Kalani	7	100%	57%	43%	71%	86%	86%	83%
Kaimuki-McKinley-Roosevelt	28	100%	68%	68%	93%	96%	93%	87%
Kaimuki	10	100%	70%	80%	100%	100%	100%	89%
McKinley	8	100%	75%	63%	75%	100%	75%	86%
Roosevelt	10	100%	60%	60%	100%	90%	100%	86%
Aiea-Moanalua-Radford	22	100%	59%	36%	82%	82%	91%	79%
Aiea	7	100%	43%	29%	71%	86%	86%	74%
Moanalua	6	100%	67%	50%	100%	100%	83%	84%
Radford	9	100%	67%	33%	78%	67%	100%	79%
Leilehua-Mililani-Waialua	20	100%	95%	70%	75%	90%	90%	89%
Leilehua	10	100%	100%	60%	90%	100%	90%	92%
Mililani	7	100%	100%	100%	71%	86%	100%	92%
Waialua	3	100%	67%	33%	33%	67%	67%	75%
Campbell-Kapolei	18	100%	89%	44%	67%	78%	94%	81%
Campbell	10	100%	90%	40%	60%	80%	90%	80%
Kapolei	8	100%	88%	50%	75%	75%	100%	83%
Pearl City-Waipahu	17	100%	88%	47%	82%	100%	88%	87%
Pearl City	10	100%	80%	40%	80%	100%	90%	84%
Waipahu	7	100%	100%	57%	86%	100%	86%	92%
Nanakuli-Waianae	9	100%	67%	78%	89%	89%	100%	84%
Nanakuli	3	100%	100%	100%	100%	100%	100%	96%
Waianae	6	100%	50%	67%	83%	83%	100%	77%
Castle-Kahuku	16	100%	63%	50%	63%	94%	100%	81%
Castle	10	100%	60%	60%	80%	90%	100%	82%
Kahuku	6	100%	67%	33%	33%	100%	100%	79%
Kailua-Kalaheo	14	100%	64%	36%	71%	93%	100%	79%
Kailua	8	100%	63%	25%	63%	100%	100%	75%
Kalaheo	6	100%	67%	50%	83%	83%	100%	85%
Hilo-Waiakea	13	100%	69%	38%	69%	77%	100%	80%
Hilo	9	100%	67%	44%	67%	89%	100%	78%
Waiakea	4	100%	75%	25%	75%	50%	100%	85%
Kau-Keaau-Pahoa	9	100%	78%	22%	67%	78%	100%	77%
Kau	2	100%	100%	50%	0%	100%	100%	82%
Keaau	4	100%	75%	25%	100%	75%	100%	76%
Pahoa	3	100%	67%	0%	67%	67%	100%	76%
Honokaa-Kealakehe-Kohala-Konawaena	19	100%	42%	16%	53%	63%	95%	65%
Honokaa	4	100%	25%	0%	75%	100%	100%	68%
Kealakehe	5	100%	20%	20%	40%	40%	100%	60%
Kohala	3	100%	67%	0%	67%	67%	67%	71%
Konawaena	7	100%	57%	29%	43%	57%	100%	66%
Baldwin-Kekaulike-Kulanihakoiki-Maui	21	100%	70%	55%	70%	100%	100%	83%
Baldwin	5	100%	80%	40%	100%	100%	100%	84%
Kekaulike	7	100%	43%	57%	29%	100%	100%	74%
Kulanihakoiki*	4	100%	67%	100%	100%	100%	100%	92%
Maui	5	100%	100%	40%	80%	100%	100%	89%
Hana-Lahainaluna-Lanai-Molokai	11	100%	55%	55%	73%	82%	91%	76%
Hana	1	100%	0%	0%	0%	100%	100%	71%
Lahainaluna	4	100%	50%	75%	75%	75%	75%	74%
Lanai	1	100%	0%	0%	0%	0%	100%	47%
Molokai	5	100%	80%	60%	100%	100%	100%	85%
Kapaa-Kauai-Waimea	15	94%	80%	40%	87%	100%	100%	84%
Kapaa	5	100%	80%	60%	60%	100%	100%	85%
Kauai	5	100%	80%	40%	100%	100%	100%	82%
Waimea	5	83%	80%	20%	100%	100%	100%	86%

Note: *New Complex Kulanihakoiki. Kulanihakoiki High School only had grade 9 in SY 2022-23 and operated from a temporary site. To provide a fair evaluation, it was excluded from the overall State and associated Complex Area and Complex-level scores. While 255 out of 258 schools completed the survey, the overall State-level score is calculated from 254 schools.

Source: Hawaii State Department of Health.

Table 23. Percent Meeting Standard on the Hawaii Statewide Assessment Program English Language Arts Assessments by Grade and Complex for SY 2022-23

District	Complex	3	4	5	6	7	8	11	All Tested Grades
ALL SCHOOLS		49%	51%	54%	50%	51%	50%	58%	52%
Department Schools		49%	51%	54%	51%	51%	50%	58%	52%
HONOLULU	Farrington	42%	42%	46%	34%	38%	43%	62%	43%
	Kaiser	64%	64%	76%	69%	72%	74%	62%	69%
	Kalani	78%	76%	78%	78%	81%	85%	72%	78%
	Kaimuki	45%	50%	49%	40%	50%	57%	39%	47%
	McKinley	38%	46%	47%	32%	37%	36%	67%	46%
	Roosevelt	71%	74%	77%	52%	59%	58%	64%	65%
CENTRAL	Aiea	47%	54%	55%	59%	55%	51%	54%	54%
	Moanalua	62%	68%	64%	73%	71%	77%	68%	69%
	Radford	60%	65%	67%	72%	66%	59%	67%	65%
	Leilehua	51%	48%	53%	45%	61%	62%	56%	53%
	Mililani	65%	70%	69%	66%	68%	66%	66%	67%
	Waialua	56%	48%	70%	65%	47%	54%	66%	58%
LEEWARD	Campbell	50%	49%	53%	51%	46%	55%	57%	51%
	Kapolei	52%	50%	59%	50%	48%	50%	57%	52%
	Pearl City	66%	68%	71%	74%	64%	56%	65%	67%
	Waipahu	46%	45%	52%	49%	49%	43%	62%	50%
	Nanakuli	11%	17%	26%	30%	27%	30%	25%	23%
	Waianae	26%	39%	36%	32%	25%	21%	41%	32%
WINDWARD	Castle	47%	49%	56%	56%	48%	31%	60%	50%
	Kahuku	53%	48%	56%	54%	46%	37%	46%	49%
	Kailua	62%	64%	61%	60%	23%	23%	66%	57%
	Kalaheo	55%	63%	57%	71%	65%	67%	69%	64%
HAWAII	Hilo	41%	45%	48%	48%	54%	51%	47%	48%
	Waiakea	37%	53%	56%	42%	48%	50%	72%	51%
	Kau	25%	29%	28%	26%	34%	18%	22%	27%
	Keaau	36%	33%	21%	23%	33%	39%	53%	33%
	Pahoa	20%	20%	25%	26%	31%	32%	50%	28%
	Honokaa	35%	42%	45%	48%	23%	40%	36%	39%
	Kealakehe	28%	35%	33%	34%	35%	42%	59%	37%
	Kohala	35%	37%	44%	43%	47%	39%	57%	44%
Konawaena	41%	41%	51%	48%	46%	53%	62%	48%	
MAUI	Baldwin	41%	44%	49%	42%	50%	41%	43%	45%
	Kekaulike	49%	48%	51%	40%	46%	41%	64%	49%
	Kulanihakoï*	40%	48%	47%	32%	48%	34%	n/a	42%
	Maui	46%	48%	51%	50%	43%	48%	60%	49%
	Hana	17%	n/a	7%	43%	48%	31%	33%	32%
	Lahainaluna	31%	40%	50%	43%	40%	46%	49%	43%
	Lanai	40%	38%	42%	35%	24%	35%	63%	40%
	Molokai	41%	32%	36%	40%	43%	51%	21%	38%
KAUAI	Kapaa	48%	47%	54%	42%	46%	32%	58%	47%
	Kauai	63%	52%	56%	58%	54%	48%	51%	55%
	Waimea	52%	54%	49%	26%	24%	24%	55%	41%
SPECIAL									
Hawaii School for Deaf & Blind		n/a	n/a	n/a	n/a	n/a	n/a	n/a	n/a
Charter Schools		40%	45%	51%	47%	50%	48%	58%	48%

Note: *New Complex Kulanihakoï.

Achievement rates are based on **all students** who were administered the SBA or HSA-Alt.

n/a = Data not reported to maintain student confidentiality (FERPA).

Source: Hawaii State Department of Education: Office of Strategy, Innovation and Performance; Data Governance and Analysis Branch.

Table 24. Percent Meeting Standard on the Hawaii Statewide Assessment Program
Mathematics Assessments by Grade and Complex for SY 2022-23

District	Complex	3	4	5	6	7	8	11	All Tested Grades
ALL SCHOOLS		52%	50%	43%	38%	34%	31%	25%	40%
Department Schools		52%	50%	44%	39%	34%	32%	25%	40%
HONOLULU	Farrington	40%	39%	35%	26%	25%	21%	27%	31%
	Kaiser	67%	60%	60%	60%	47%	58%	40%	56%
	Kalani	81%	72%	67%	67%	70%	72%	44%	68%
	Kaimuki	45%	49%	42%	29%	31%	40%	6%	37%
	McKinley	41%	44%	37%	19%	20%	33%	25%	34%
	Roosevelt	75%	74%	74%	35%	42%	32%	33%	54%
CENTRAL	Aiea	54%	49%	45%	47%	37%	33%	33%	43%
	Moanalua	66%	69%	58%	61%	55%	52%	28%	54%
	Radford	64%	66%	52%	61%	46%	37%	36%	54%
	Leilehua	53%	50%	44%	40%	42%	45%	27%	44%
	Mililani	70%	71%	64%	55%	54%	41%	37%	56%
Waialua	63%	55%	57%	54%	49%	43%	21%	49%	
LEEWARD	Campbell	55%	48%	42%	37%	31%	33%	20%	39%
	Kapolei	55%	52%	48%	34%	30%	27%	24%	39%
	Pearl City	70%	68%	63%	67%	52%	49%	40%	60%
	Waipahu	50%	45%	42%	39%	34%	26%	29%	38%
	Nanakuli	18%	15%	9%	20%	13%	12%	7%	14%
Waianae	25%	34%	21%	29%	15%	10%	9%	21%	
WINDWARD	Castle	50%	46%	41%	47%	29%	20%	19%	38%
	Kahuku	52%	54%	46%	51%	39%	25%	15%	42%
	Kailua	66%	57%	49%	50%	15%	7%	27%	45%
	Kalaheo	63%	59%	44%	54%	46%	45%	26%	50%
HAWAII	Hilo	42%	41%	38%	38%	40%	40%	18%	38%
	Waiakea	46%	52%	42%	29%	30%	30%	43%	39%
	Kau	23%	23%	12%	15%	9%	5%	4%	14%
	Keaau	41%	26%	16%	10%	13%	14%	20%	20%
	Pahoa	24%	19%	13%	15%	12%	17%	14%	17%
	Honokaa	35%	42%	33%	38%	19%	35%	10%	31%
	Kealakehe	27%	31%	21%	15%	18%	32%	27%	24%
	Kohala	43%	33%	33%	13%	26%	14%	10%	24%
Konawaena	42%	45%	40%	25%	21%	20%	22%	32%	
MAUI	Baldwin	49%	42%	38%	29%	24%	24%	16%	33%
	Kekaulike	52%	41%	38%	22%	25%	26%	23%	33%
	Kulanihakoï*	40%	50%	42%	27%	21%	9%	n/a	33%
	Maui	48%	48%	42%	30%	21%	27%	27%	35%
	Hana	17%	n/a	n/a	29%	24%	14%	8%	17%
	Lahainaluna	41%	35%	36%	21%	25%	21%	10%	26%
	Lanai	36%	50%	30%	30%	4%	10%	5%	23%
	Molokai	33%	40%	33%	31%	29%	25%	1%	27%
KAUAI	Kapaa	53%	45%	45%	27%	20%	12%	19%	32%
	Kauai	70%	51%	46%	47%	48%	34%	20%	46%
	Waimea	54%	55%	34%	22%	11%	22%	13%	32%
SPECIAL									
Hawaii School for Deaf & Blind		n/a	n/a	n/a	n/a	n/a	n/a	n/a	7%
Charter Schools		40%	39%	37%	31%	28%	21%	20%	31%

Note: *New Complex Kulanihakoï.

Achievement rates are based on **all students** who were administered the SBA or HSA-AIt.

n/a = Data not reported to maintain student confidentiality (FERPA).

Source: Hawaii State Department of Education: Office of Strategy, Innovation and Performance; Data Governance and Analysis Branch.

Table 25. Percent Meeting Standard on the Hawaii Statewide Assessment Program Science Assessments by Grade and Complex for SY 2022-23

District	Complex	5	8	HS	All Tested Grades
ALL SCHOOLS		46%	40%	33%	40%
Department Schools		46%	40%	33%	40%
HONOLULU	Farrington	38%	29%	29%	32%
	Kaiser	65%	68%	30%	53%
	Kalani	67%	70%	53%	62%
	Kaimuki	40%	42%	11%	34%
	McKinley	35%	21%	34%	33%
	Roosevelt	76%	51%	36%	55%
CENTRAL	Aiea	44%	47%	43%	45%
	Moanalua	56%	69%	43%	54%
	Radford	60%	53%	52%	56%
	Leilehua	45%	52%	37%	45%
	Mililani	60%	59%	48%	55%
	Waialua	52%	37%	36%	42%
LEEWARD	Campbell	45%	49%	33%	42%
	Kapolei	49%	36%	33%	40%
	Pearl City	64%	46%	34%	50%
	Waipahu	40%	43%	41%	41%
	Nanakuli	15%	13%	7%	10%
	Waianae	23%	20%	8%	16%
WINDWARD	Castle	48%	26%	26%	35%
	Kahuku	53%	28%	42%	41%
	Kailua	54%	23%	41%	44%
	Kalaheo	50%	50%	51%	50%
HAWAII	Hilo	41%	49%	34%	41%
	Waiakea	47%	38%	48%	45%
	Kau	24%	20%	11%	17%
	Keaau	18%	26%	16%	19%
	Pahoa	22%	25%	15%	20%
	Honokaa	42%	40%	21%	34%
	Kealakehe	24%	40%	34%	32%
	Kohala	49%	22%	n/a	39%
Konawaena	40%	40%	20%	32%	
MAUI	Baldwin	38%	26%	29%	32%
	Kekaulike	45%	31%	47%	42%
	Kulanihakoi*	45%	13%	n/a	32%
	Maui	40%	39%	39%	39%
	Hana	7%	10%	25%	15%
	Lahainaluna	38%	21%	17%	26%
	Lanai	21%	15%	n/a	18%
	Molokai	38%	35%	9%	25%
KAUAI	Kapaa	45%	15%	30%	30%
	Kauai	49%	32%	21%	34%
	Waimea	40%	16%	14%	24%
SPECIAL					
Hawaii School for Deaf & Blind		n/a	n/a	n/a	n/a
Charter Schools		43%	36%	31%	37%

Note: *New Complex Kulanihakoi.

Achievement rates are based on **all students tested** who were administered either the HSA Science, HSA-Alt, or the Biology I End-of-Course Exam. The achievement rates for high school students are based on students who were administered either the Biology I End-of-Course Exam or the HSA-Alt for grade 11.

n/a = Data not reported to maintain student confidentiality (FERPA).

Source: Hawaii State Department of Education: Office of Strategy, Innovation and Performance; Data Governance and Analysis Branch.

Appendix A. Glossary

This glossary explains the educational and fiscal terms and measures contained in the Data Book. An “n/a” indicates data are “not appropriate” or “not reportable.” A “--” indicates data are missing or unavailable. Due to rounding of percentages, there may be slight differences among published reports (for example, 9.6% may be reported as 10% for the same measure in different reports).

Administrators, School: This is a Full-Time Equivalent (FTE) count of all principals and vice-principals.

Administrators, State and Complex Area: This is an FTE count of the positions responsible for the administrative support of programs, curriculum, and state or federal legal requirements at the complex area and state levels. Examples of FTE positions include complex area superintendents, evaluation specialists, facilities planners, personnel specialists, test development specialists, budget specialists, information (data) specialists, state and district curriculum/educational specialists, and safety/security program specialists.

Advanced Placement: A program in the United States created by the College Board which offers college-level curricula and examinations to high school students. American colleges and universities may grant placement and course credit to students who obtain high scores on the examinations.

Appropriated Funds: Funds determined by the state legislature and enacted by the governor to provide basic support for the Hawaii State Department of Education to operate a statewide school district. Appropriated Funds include Executive Budget Bill appropriations for the Department and Charter schools plus actual expenditures made by Department of Budget and Finance (B&F) for both Department and Charter schools employer’s share of the cost of the employees’ retirement system and health insurance costs and related debt service. Beginning in FY 2009-10, appropriations for DOE related retirement benefit payments, health premium payments, and debt service payments were transferred to B&F. These amounts have continued to be included in the Appropriated Funds on this report for comparability and to present the total cost of public education.

Attendance Rate: The percentage of the official student enrollment attending school every day during the school year. For example, 95% means that on any given day during the given school year, an average of 95% of the students are present in school.

Average Years Teaching Experience: This is a simple average of the number of years of approved teaching experience within the Hawaii Department of Education.

Charter Schools: Charter schools are public schools operated and managed by independent governing boards. They operate under a performance contract with the State Public Charter School Commission, the statewide charter school authorizer. The Commission approves quality applications for new charter schools, monitors the performance and legal compliance of existing charter schools, and is responsible to the Board of Education.

Classroom Teachers, FTE or Headcount: An FTE Classroom Teacher count is a position count of all teachers who are directly teaching students. Unlike FTE, “Headcount” is a simple count of the number of teachers who are directly teaching students. Thus, 1.5 FTE teachers may have a headcount of two (one 1.0 FTE and one 0.5 FTE) or three (three teachers in 0.5 FTE positions).

Community Eligibility Provision (CEP): Is a non-pricing meal service option for schools and school districts in low-income areas. CEP allows the nation’s highest poverty schools and districts to serve breakfast and lunch at no cost to all enrolled students without collecting household applications. For additional information visit the U.S. Department of Agriculture Food and Nutrition Service website: <https://www.fns.usda.gov/cn/community-eligibility-provision>.

Complex: This is a smaller division within a Complex Area consisting of a high school and the middle/intermediate and elementary schools within its attendance boundary.

Complex Area: This is an administrative unit made up of two or more complexes.

Demographics, State: Figures reported by the U.S. Census Bureau for years other than decennial 10-year censuses are estimates and are updated periodically. Such estimates in this report are from the American Community Survey. For an explanation of terms, definitions, and criteria used for classification, please visit the U.S. government website for the census: <https://www.census.gov/>.

Dropout Rate: This four-year dropout rate is the percentage of high school students who have not returned to school and have either officially exited as “drop-outs”, have school enrollment statuses that are undetermined, or have not graduated within four years.

Economically Disadvantaged: These are students whose families meet the income qualifications for the federal free/reduced-cost lunch program. This is an indicator of school-community poverty.

English Learners (EL): Students certified as receiving English-as-a-second-language services.

Enrollment Count, Official: The official enrollment count of each school is reported to the state upon the yearly opening of school. A school's enrollment may fluctuate over the course of the school year; thus, a school's enrollment count taken mid-year may be different from its official enrollment count.

Federal Funds: Funds provided by the federal government for use by the state public school system through grants from various federal agencies, such as the U.S. Department of Education (ED), U.S. Department of Defense, and U.S. Department of Agriculture.

Five or More Years at Same School: Percentage of teachers who have taught at one school for five or more years. It is an indicator of school staffing stability. Schools with higher levels of stability are considered most successful in implementing and sustaining school improvement efforts.

Fully Licensed: Teachers who meet the requirements (e.g., earned at least a bachelor's degree and completed an approved teacher training program) to be fully licensed by the Hawaii State Teachers Standards Board.

Full-Time Equivalent (FTE): These are position counts and are the sum of full- and part-time positions. Note that partial counts are possible. For example, one full-time (1.0 FTE) and one half-time (0.5 FTE) would count as 1.5 FTEs.

General Funds: The primary source of funding for the state public school system provided by the state through taxpayer revenues.

Graduation, Graduation Rate, Graduate On Time, Four-Year Graduation: Count or percentage of all high school students, including charter school students, who had completed high school within four years of their 9th-grade entry date. Special Education students receiving certificates of completion and students taking more than four years to complete high school are not included. For more information on the Adjusted Cohort Graduation Rate methodology, see the ESSA Graduation Rate Guidance on the ED website: <https://www2.ed.gov/policy/elsec/leg/essa/essagraderateguidance.pdf>.

Hawaii State Alternate (HSA-Alt) Assessment: The HSA-Alt in English Language Arts, Mathematics and Science are administered to students to promote, improve access to, and measure the attainment of standards for students with significant cognitive disabilities.

Honors Recognition Certificates: Honors Recognition Certificates will be awarded to students who meet the requirements for the Hawaii High School Diploma, attain a cumulative grade point average of 3.0 or above, and earn the required credits for Academic, CTE, or STEM Honors. Students are able to earn a certificate for each honors distinction. For more information on the graduation requirements and the Honors Recognition Certificate requirements visit the Hawaii Department of Education (HIDOE) website: <http://www.hawaiipublicschools.org/TeachingAndLearning/StudentLearning/GraduationRequirements/Pages/Requirements.aspx>.

Kaipuni Assessment of Education Outcomes (KAEO): Assessments administered in the Hawaiian language to Hawaiian language immersion students in Language Arts, Mathematics, and Science.

National Assessment of Educational Progress (NAEP): A congressionally-mandated project administered by the ED's National Center for Education Statistics (NCES). The NAEP program consists of assessments in a variety of subject areas (e.g., Civics, U.S. History, and Science), and the Every Student Succeeds Act (ESSA) requires districts that receive Title I funding to participate in the NAEP mathematics and reading assessments for grades 4 and 8. NAEP is the only assessment that serves as a common measure of student achievement across the country, providing valuable data on student performance in comparison to other states and long-term trends in student performance within and across key demographic groups. NAEP results have been an important metric to analyze the impact of systemic and school-level efforts on student achievement for nearly the past 30 years. The metrics that NAEP uses include average scale scores and the percentages of students achieving NAEP Advanced, NAEP Proficient, NAEP Basic, and NAEP Below Basic. Advanced and Proficient denote mastery of challenging subject matter, including success on some items that are above the grade level of the students being tested. NAEP defines Basic as denoting partial mastery of prerequisite knowledge and skills that are fundamental for proficient work at each grade assessed. Below Basic means performance below the grade level being tested.

Next Generation Science Standards (NGSS): The Hawaii Board of Education adopted the Next Generation Science Standards (NGSS) to replace the Hawaii Content and Performance Standards III (HCPS III) for Science in 2016. Full implementation took place in SY 2019-20. Due to COVID-19 there was a waiver for statewide assessments in SY 2019-20 and, as a result, the first administration for NGSS-based science assessments was SY 2020-21. Results from the NGSS-based assessments administered in SY 2020-21 are not comparable to the results of HCPS III Science Assessments given newly adopted standards and test items. The results of SY 2020-21 tests will serve as a new baseline for student performance and growth.

Not Suspended, Students: The number of students who are not suspended by the school and an indicator of appropriate student behavior at school.

Others: Percentage of high school completers who received a special education certificate of completion in lieu of a diploma and students who are still attending school and did not graduate in the four-year time frame. These students are not included in the "Dropout" count or in the "Graduation On-time" count.

Perceptions of Safety and Well-Being, Student and Teacher: Positive responses ("Completely Agree", "Strongly Agree" and "Agree") to a set of items on the Hawaii State Department of Education's annual School Quality Survey (SQS) regarding school safety and well-being. The percentage of responses that are positive is reported.

Per Pupil Expenditure: The numbers reported by the National Center of Education Statistics (NCES) may be used for state-to-state comparisons. Numbers are based on membership and can be expected to be smaller than per pupil expenditures based on average daily attendance. Current expenditure for public elementary and secondary education in a state is divided by the student membership. Current expenditures are funds spent for the operation of local public schools and local education agencies, including such operating expenses as salaries for school personnel, student transportation, school books and materials, and energy costs, but excluding capital outlay and interest on school debt.

Private Schools: Privately-operated schools not under the direction of the Hawaii State Department of Education.

Retention Rates for Elementary: Percentage of students, excluding kindergartners, who are not promoted to the next grade level. A low retention rate is desired.

Retention Rates for Middle & Intermediate: Percentage of 8th grade students who are not promoted to 9th grade the following year. A low retention rate is desired.

Schools, Total: The total number is the sum of all public schools. All Department, Charter, and special schools are in this count. The Community Schools for Adults are not included.

Section 504: Regulation requiring schools to provide a “free appropriate public education” (FAPE) to each qualified student with a disability who is in the school district’s jurisdiction regardless of the nature or severity of that disability.

Smarter Balanced Assessment (SBA): These tests of the Hawaii Statewide Assessment Program (HSAP) measure student achievement in English Language Arts and Mathematics based on Hawaii Department of Education content standards. The percentages shown are assessment results. “*Percent Meeting Standard*” is derived from test results that meet or exceed the achievement standard (i.e., achievement cut-score).

Special Education (SPED): This count and percentage contain all special education students listed on the official enrollment report as receiving special education services.

Special Funds: Funds generated through revenue sources other than state taxpayer revenues, such as cafeteria collections from students, adult education tuition/fees, summer school tuition, driver education fees, facility rental fees, and lost textbook penalty fees.

Special Needs, Multiple: Students identified and/or qualified as special needs under more than one of the following categories: economically disadvantaged as determined by receiving free/reduced-cost lunch, Section 504 classification, and certified as receiving special education or English Language Learner services.

State and Local Expenditures Supporting Public Education, Percent: This percentage is published in the annual ED National Center of Education Statistics (NCES) *Digest of Educational Statistics* publication. The percentage is calculated by dividing the states’ “Total, all general expenditures per capita” by the states’ “Elementary and secondary education expenditures per capita.” The “Total, all general expenditures per capita” includes state and local government expenditures for education services, social services, and income maintenance, transportation, public safety, environment and housing, governmental administration, interest on general debt, and other general expenditures, including intergovernmental expenditure to the federal government, as reported by the state’s NCES Common Core of Data Financial Survey.

Support Staff, Other: This is an FTE count that encompasses a wide range of positions that support schools. This category may include, but is not limited to, school assessment liaisons, athletic directors, registrars, state and district resource teachers, school psychologists, custodians, cafeteria workers, school secretaries, school security guards, educational assistants, occupational therapists, mental health assistants, behavioral specialists, and student service coordinators. Note that the assignment of positions to categories is based on ED National Center for Education Statistics Common Core of Data Non-Fiscal Survey requirements.

Trust Funds: Funds segregated for specific purposes, such as foundation grants and athletic gate receipts.

Wellness: Student wellness is affected by nutrition education, the food served in schools, and the amount of physical activity students engage in. The Department of Education also recognizes that when students’ wellness needs are met, they attain higher achievement levels.

Appendix B. References and Resources

Educational and Accountability Reports

Accountability Resource Center Hawaii (ARCH)

This is a web portal for educational accountability information. It complements the many federally- and state-required accountability reports at the school, complex, complex area, and state levels that are available as static documents. Visit the HIDOE's ARCH website: <http://arch.k12.hi.us>.

Enrollment

These reports have student enrollment figures by districts, state, and grade-level groups and are available on the HIDOE School Reports page:

<http://www.hawaiipublicschools.org/VisionForSuccess/SchoolDataAndReports/SchoolReports/Pages/home.aspx>.

National Assessment of Educational Progress (NAEP)

The NAEP website has a variety of information available to educators and the general public. The NAEP Data Explorer (<https://www.nationsreportcard.gov/ndecore/landing>) is a useful tool to access data on student performance at the national and state level, which can also be disaggregated by key demographic groups. The website also provides access to a Questions Tool (containing numerous released items from the NAEP assessments) and a Take NAEP Now tool that teachers may use as a sample assessment in their classroom. Any questions regarding the NAEP assessments or the resources on the NAEP website may contact NAEP State Coordinator Dewey Gottlieb, at dewey.gottlieb@k12.hi.us or (808) 307-3636. Visit the NAEP website: <https://nationsreportcard.gov>.

Longitudinal Education Information (LEI) Public ESSA Dashboard

The Longitudinal Education Information (LEI) Public ESSA Dashboard provides the school level reports mandated by the federal Every Student Succeeds Act (ESSA). ESSA is a reauthorization of federal education law, replacing the No Child Left Behind. It was implemented in school year 2017-18. Under ESSA, states must set rigorous academic standards, assess students in core subjects, report progress data, set teacher qualifications, and report per pupil expenditures. ESSA reports are available at the LEI Public ESSA Dashboard and ARCH websites: <http://hidoedata.org> and <http://arch.k12.hi.us/reports/essa>.

School Quality Survey (SQS)

The survey gathers student, parent, and school staff perceptions that are useful for school improvement and planning efforts. The SQS also provides information about parent involvement and parent and student satisfaction with their schools. SQS reports are available on the ARCH website:

<http://arch.k12.hi.us/reports/sqs>.

School Status and Improvement Report (SSIR)

Each SSIR has a description of the school and its setting, a summary of progress in implementing Hawaii Department of Education standards, and information on school resources and educational outcomes. SSIR reports are available on the ARCH website: <http://arch.k12.hi.us/reports/ssir>.

Strive HI

The current school accountability and improvement system is designed to meet the needs of Hawaii's students, educators, and schools. It aligns and connects our key state education policies and initiatives to position students and educators for success. For more information, visit the ARCH website

<http://arch.k12.hi.us> or the HIDOE Strive HI Performance System page

<http://www.hawaiipublicschools.org/VisionForSuccess/AdvancingEducation/StriveHIPerformanceSystem/Pages/home.aspx>.

Trend Report: Educational & Fiscal Accountability

This annual report contains three years of trend data on schools, school complexes, and the Hawaii State Department of Education at selected benchmark grade levels with performance indicators in areas relating to student achievement, safety and well-being, and civic responsibility. These reports are designed to present trend data information to the public in a concise format for each complex and school as well as for the state. Trend reports are available on the ARCH website: <http://arch.k12.hi.us/reports/trend-report>.

Financial Reports

Allocations by School Program

These annual reports contain dollar amounts allocated by Allocation Number, Program, or Organization and can be found on the HIDOE Budget page:

<https://www.hawaiipublicschools.org/ConnectWithUs/Organization/Budget/Pages/allocations.aspx>.

Annual Financial Reports

This Annual Financial Report is prepared each year to inform interested persons of the total cost of public education in the State of Hawaii. The reports provide both Operating and Capital Improvement Project fund information that is useful in presenting our educational system's financing, expenditures, and per pupil information. This report can be found on the HIDOE State Reports page:

<http://www.hawaiipublicschools.org/VisionForSuccess/SchoolDataAndReports/StateReports/Pages/home.aspx>.

Audit

The annual report on the financial audit of the Hawaii State Department of Education forms an opinion on the fairness of the presentation of its financial statements to comply with requirements for state and local governments that receive federal financial assistance. This report can be found on the HIDOE State Reports page:

<http://www.hawaiipublicschools.org/VisionForSuccess/SchoolDataAndReports/StateReports/Pages/home.aspx>.

Budget

These reports have fiscal information on budget restrictions, operating budget allocations (initial and supplemental), emergency appropriations, and biennium budgets and can be found on the HIDOE Budget page: <http://www.hawaiipublicschools.org/ConnectWithUs/Organization/Budget/Pages/home.aspx>.

Special Education Reports

Annual Performance Report & State Performance Plan

These documents are the state's plans and reports in accordance with the Individuals with Disabilities Education Improvement Act of 2004. Included are evaluations of the state's efforts and plans for improving implementation. For more information, visit the HIDOE Special Education Performance Report page:

<http://www.hawaiipublicschools.org/VisionForSuccess/SchoolDataAndReports/StateReports/Pages/Special-Education-Performance-Report.aspx>.

Due Process Hearing Redacted Decisions

The due process hearing redacted decisions are provided for public information. For more information, visit the HIDOE Special Education Performance Report page:

<http://www.hawaiipublicschools.org/VisionForSuccess/SchoolDataAndReports/StateReports/Pages/Special-Education-Performance-Report.aspx>.

Other Resources

Center on the Family

This resource provides access to research reports, informational articles, videos, brochures, and other materials designed to support and strengthen families in Hawaii. The Center on the Family at the University of Hawaii-Manoa (UH-Manoa) also issues an annual report on a core set of indicators reflecting overall well-being of Hawaii families. For more information, visit the UH-Manoa Center on the Family website: <http://uhfamily.hawaii.edu>.

Hawaii P-3

An initiative by Hawaii P-20 to increase children's social-emotional and cognitive development toward the end goal of reading at grade level by third grade. For more information, visit the Hawaii P-3 website: <https://www.hawaiip20.org/p-20-initiatives/early-childhood/>.

Hawaii P-20 Partnerships for Education

A statewide partnership led by the Hawaii Children's Action Network (HCAN), previously known as Good Beginnings Alliance, the Hawaii State Department of Education, and the University of Hawaii System to strengthen early childhood through post-secondary education so that all students achieve career and college success. Annual College and Career Readiness reports are available on its website. For more information, visit the Hawaii P-20 website: <https://www.hawaiip20.org/>.

State Public Charter School Commission

The State Public Charter School Commission (SPCSC or Commission) is the statewide charter school authorizer whose mission is to authorize high-quality public charter schools throughout Hawaii. The Commission approves quality applications for new charter schools and monitors the performance and legal compliance of existing charter schools. Charter schools are public schools operated and managed by independent governing boards that are responsible for the schools' financial, organizational, and academic viability. Although they are funded on a "per pupil" basis separately from Department of Education-operated schools, charter schools are open-enrollment public schools that serve all students and do not charge tuition. Annual reports are available on SPCSC's website: <http://www.chartercommission.hawaii.gov>.

Appendix C. Supplemental Data Tables

Data tables are available online at <http://arch.k12.hi.us/reports/hidoe-data-book>.

Table 1.	Enrollment in Hawaii Public and Private Schools	1
Table 2.	Enrollment by Complex Area	2
Table 3.	Enrollment of Students with Special Needs.....	3
Table 4.	Special Needs Affecting Public School Students in Hawaii	4
Table 5.	Average Daily Attendance Rates by School Type	5
Table 6.	Four-Year Graduation and Dropout Rates	6
Table 7.	Ethnicity of Students and Teachers	7
Table 8.	Hawaii Statewide Assessment Program Results.....	8
Table 9.	Chapter 19 Suspensions Categorized by Type of Incident.....	9
Table 10.	Administrative Staff as Proportion of Total Staff: Hawaii and Comparison States	10
Table 11.	Expenditure Per Pupil: Hawaii and Comparison States.....	11
Table 12.	Hawaii and States with Similar Financial Resources.....	12
Table 13.	Percent of State and Local Expenditures Supporting Public Education:Hawaii and Comparison States	13
Table 14.	Percent of State and Local Expenditures Supporting Public Education and Per Pupil Expenditures: All States.....	14