

Maps of Pearce and Garcia Middle School Attendance Zones Fall 2012 Telephone Survey

Purpose. Maps were developed to supplement findings from the Fall 2012 Pearce and Garcia Middle Schools phone survey. The maps show the distribution and density of student households in the two attendance zones, the distribution of responses to the survey questions, as well as the proportion of ethnicities in the surveyed area.

Questions answered. What was the parent response rate to the survey in each elementary school attendance zone within the Pearce and Garcia Middle School attendance zones? What is the percentage of students in early education (EE) through 7th grade whose parents support a single-gender middle school in their neighborhood? What percentage of parents would choose a single-gender school over a traditional middle school for their child? Finally, what percentage of students' parents support the creation of single-gender middle schools even if children who choose to attend a traditional middle school would have to travel outside the neighborhood? Additionally, maps show percentages of African American and Hispanic respondents within the elementary school attendance zones.

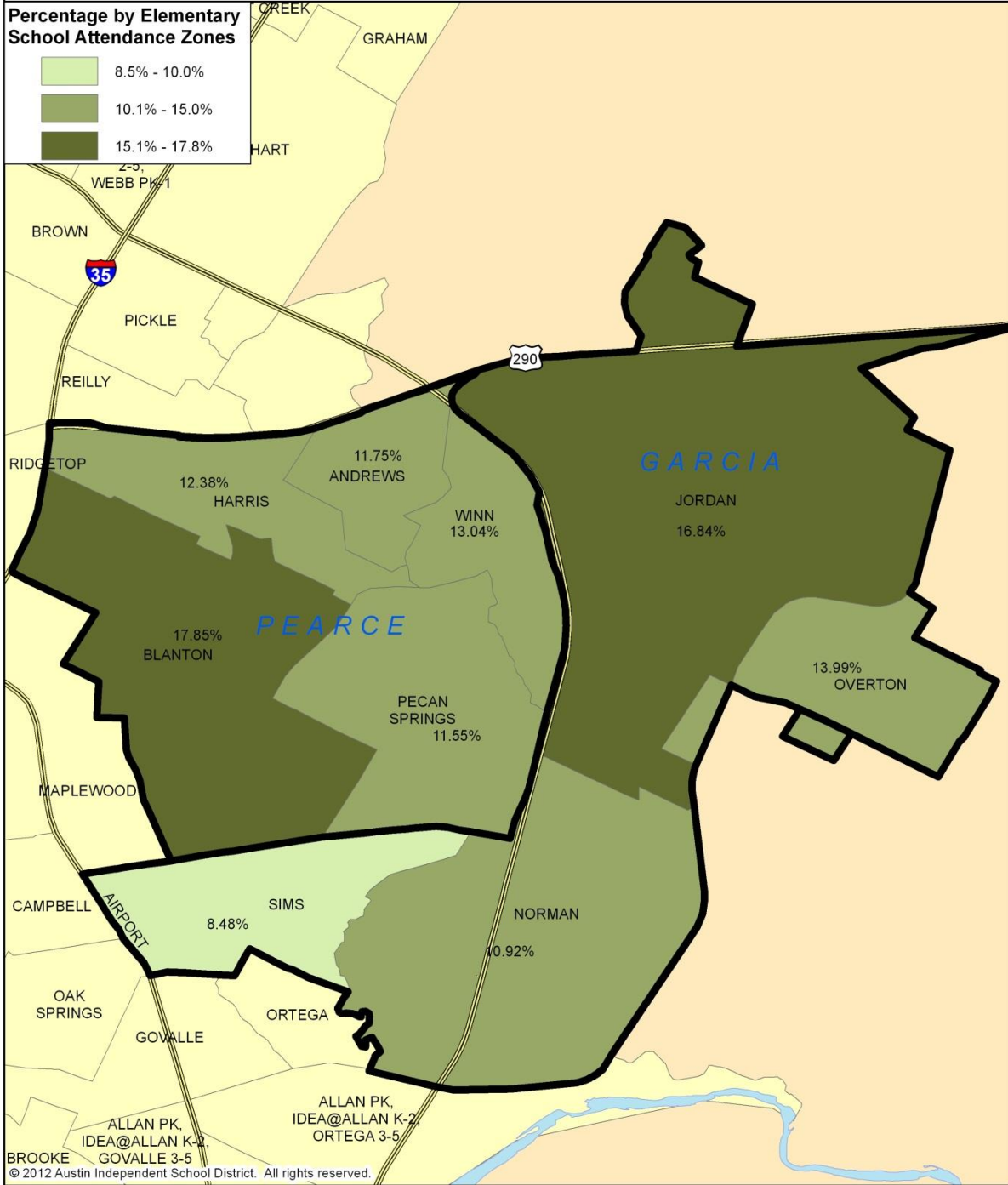
Data elements and methodology. The percentages of parents who responded to the survey are mapped for each elementary school attendance zone within the Pearce and Garcia Middle School attendance zones. Specifically, the percentages of parents' (b) support single-gender middle schools over traditional middle schools and, (c) support the creation of single-gender middle schools even if children who choose to attend a traditional middle school would have to travel outside the neighborhood. Percentages of African American and Hispanic respondents are also mapped for each elementary attendance zone.

Conclusions. The majority of parents of elementary school students in Norman, Blanton, and Harris Elementary School attendance zones supported a single-gender middle school in their neighborhood, while fewer of the parents of students in Pecan Springs, Winn, Andrews, Jordan, and Overton Elementary School attendance zones supported the proposition. Although parents gave moderate support for having the option available, when it came to their own child, they were less supportive. They were also less supportive if attending a traditional school would require travel outside the neighborhood.

Included Maps

- Page 2. Parent Response Rate
- Page 3. Percentage of Students in Grades EE Through 7 Whose Parents Support a Single-Gender Middle School in Their Neighborhood
- Page 4. Percentage of Students in Grades EE Through 7 Whose Parents Would Choose a Single-Gender Middle School Over a Traditional Middle School for Their Child
- Page 5. Percentage of Students in Grades EE Through 7 Whose Parents Support Creation of a Single-Gender Middle School Even if Children Who Choose to Attend a Traditional Middle School Would Have to Travel Outside of the Neighborhood
- Page 6. Percentage of Respondents that are African American
- Page 7. Percentage of Respondents that are Hispanic

Map 1. Fall 2012 Pearce and Garcia Phone Survey: Parent Reponse Rate



© 2012 Austin Independent School District. All rights reserved.

Department of
**Research and
 Evaluation**
 AUSTIN INDEPENDENT SCHOOL DISTRICT

0 0.25 0.5 0.75 1 Miles

Data Sources:
 Austin ISD 2012

Pearce and Garcia Fall 2012
 Single-Gender Middle School Phone Survey

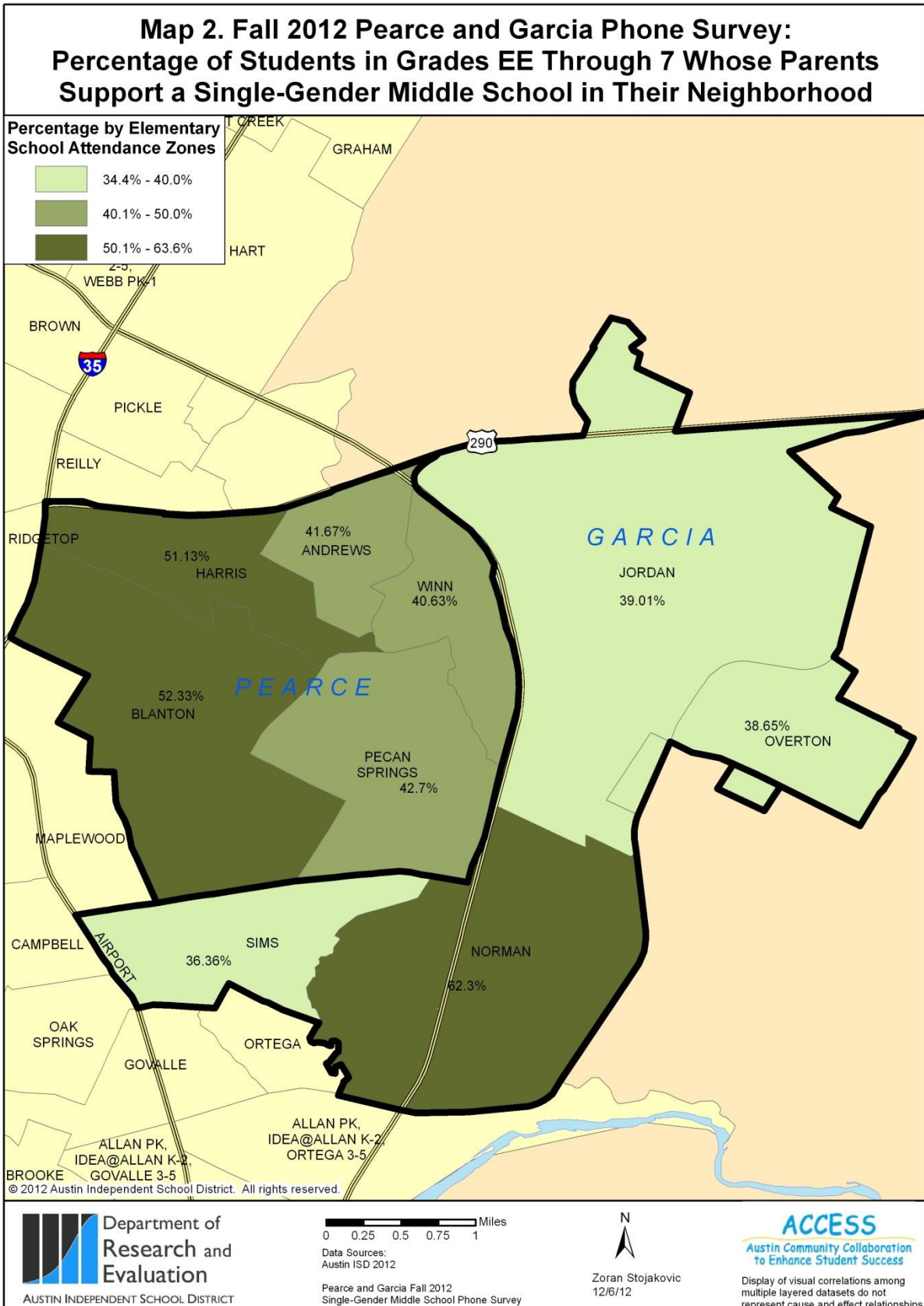
N

Zoran Stojakovic
 12/6/12

ACCESS
 Austin Community Collaboration
 to Enhance Student Success

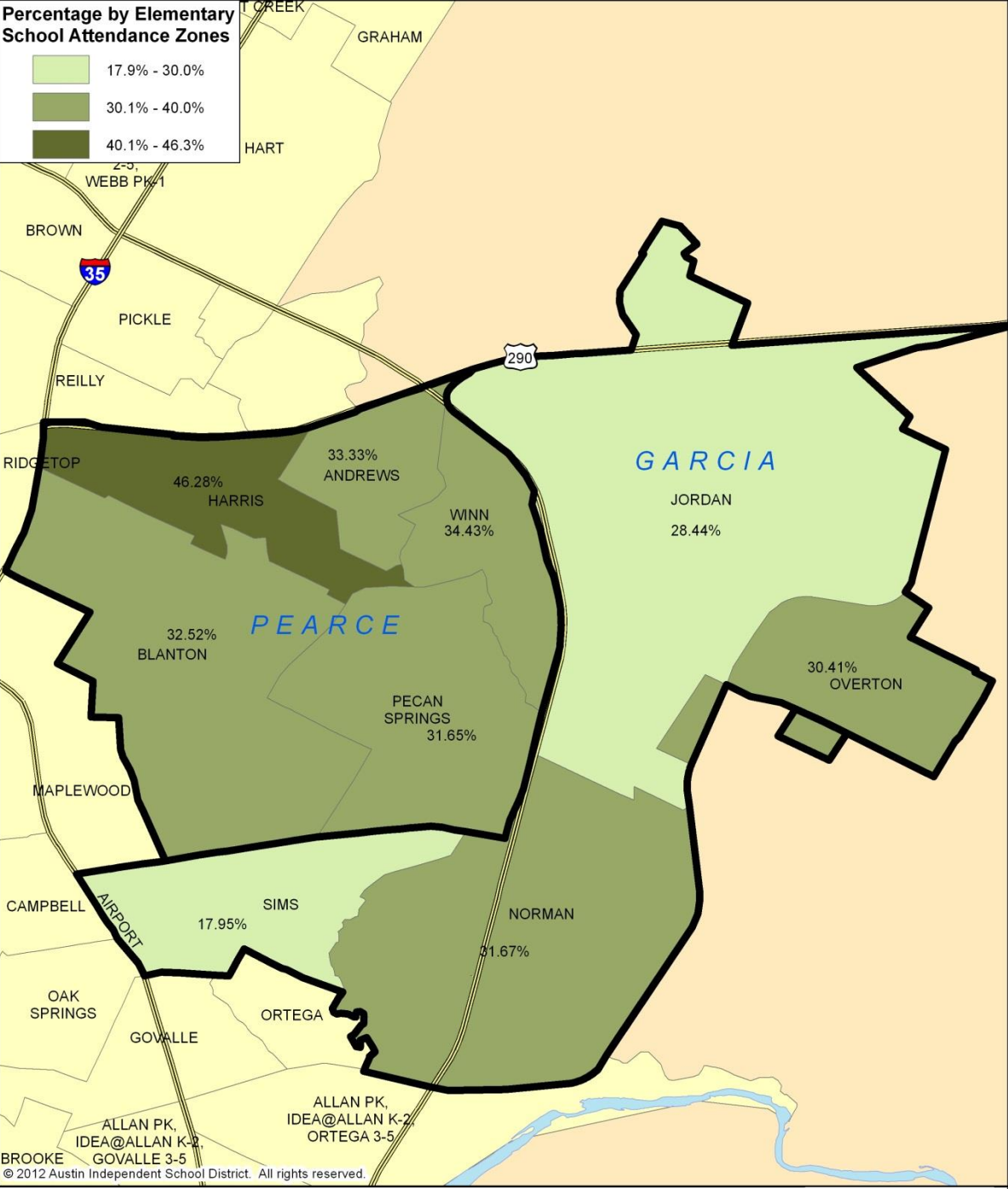
Display of visual correlations among
 multiple layered datasets do not
 represent cause and effect relationships.

Maps of Pearce and Garcia Middle School Attendance Zones
 Fall 2012 Telephone Survey



Maps of Pearce and Garcia Middle School Attendance Zones
 Fall 2012 Telephone Survey

**Map 3. Fall 2012 Pearce and Garcia Phone Survey:
 Percentage of Students in Grades EE Through 7 Whose Parents Would Choose
 a Single-Gender Middle School Over a Traditional Middle School for Their Child**



Department of
**Research and
 Evaluation**
 AUSTIN INDEPENDENT SCHOOL DISTRICT

0 0.25 0.5 0.75 1 Miles

Data Sources:
 Austin ISD 2012

Pearce and Garcia Fall 2012
 Single-Gender Middle School Phone Survey

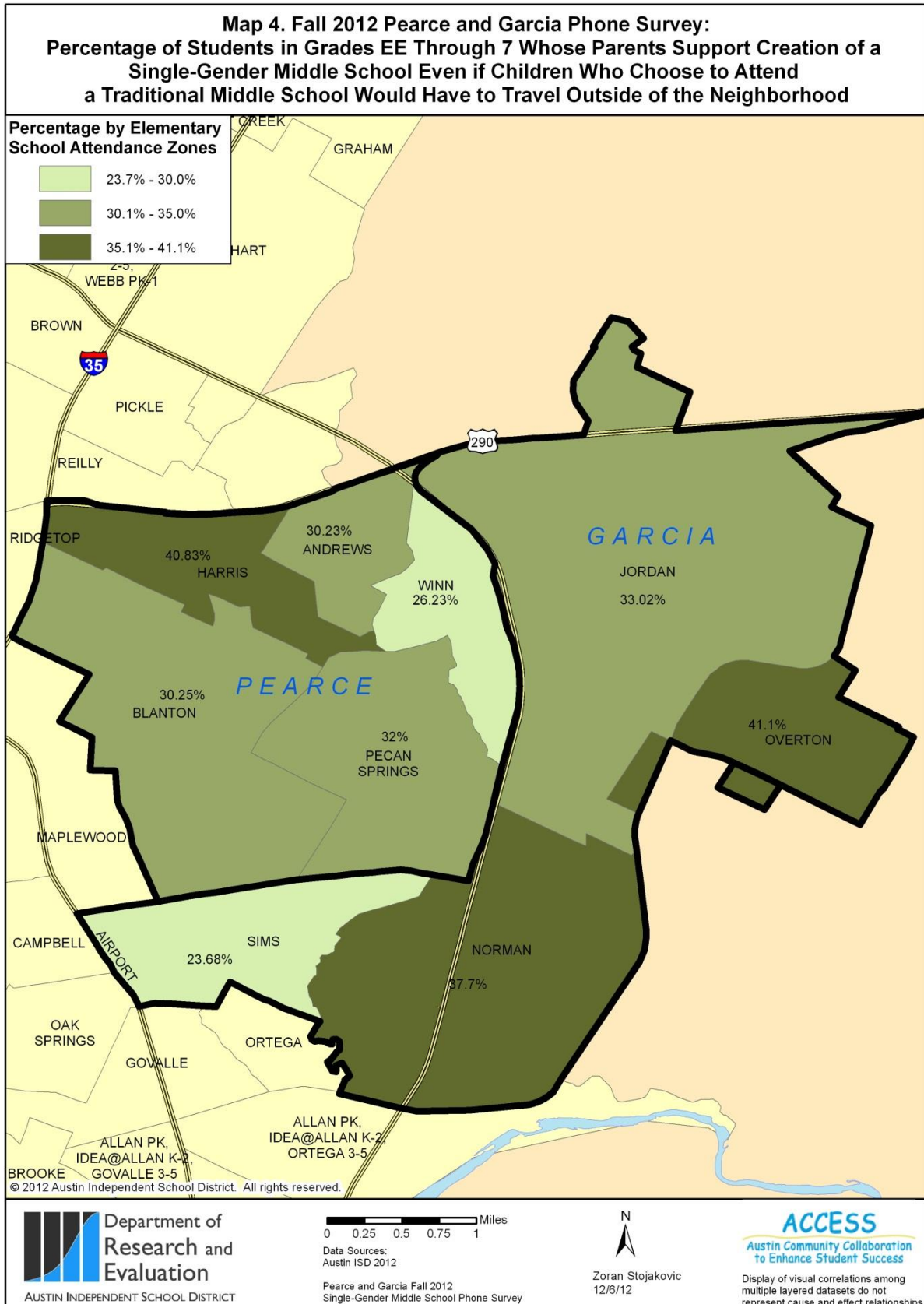
N

Zoran Stojakovic
 12/6/12

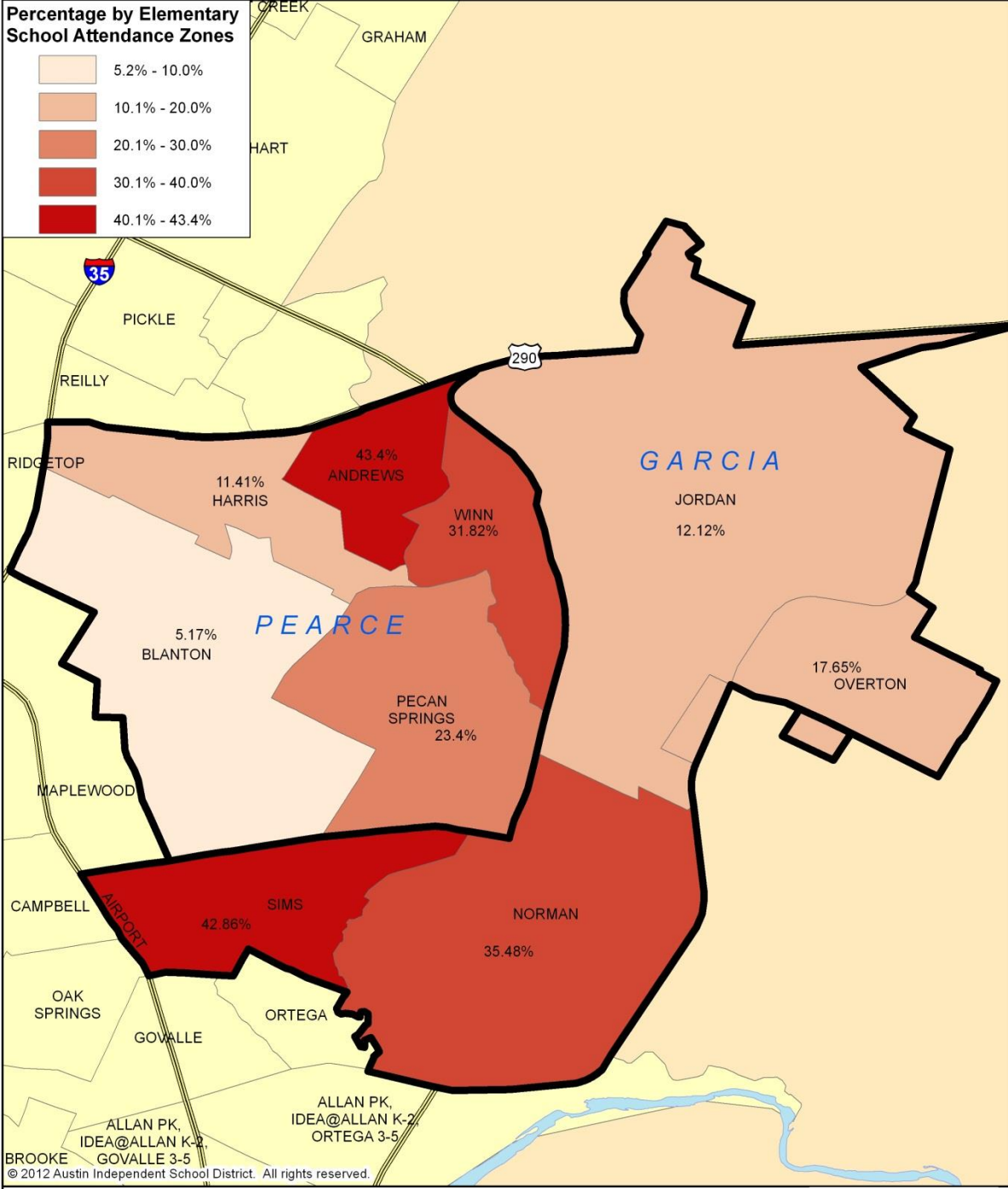
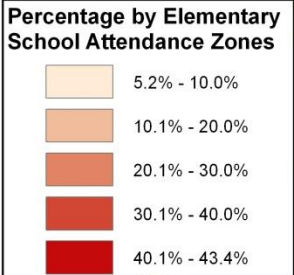
ACCESS
 Austin Community Collaboration
 to Enhance Student Success

Display of visual correlations among
 multiple layered datasets do not
 represent cause and effect relationships.

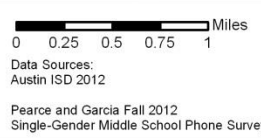
Maps of Pearce and Garcia Middle School Attendance Zones
 Fall 2012 Telephone Survey



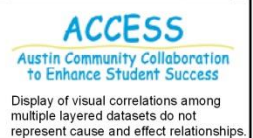
Fall 2012 Pearce and Garcia Phone Survey: Percentage of Respondents that are African American



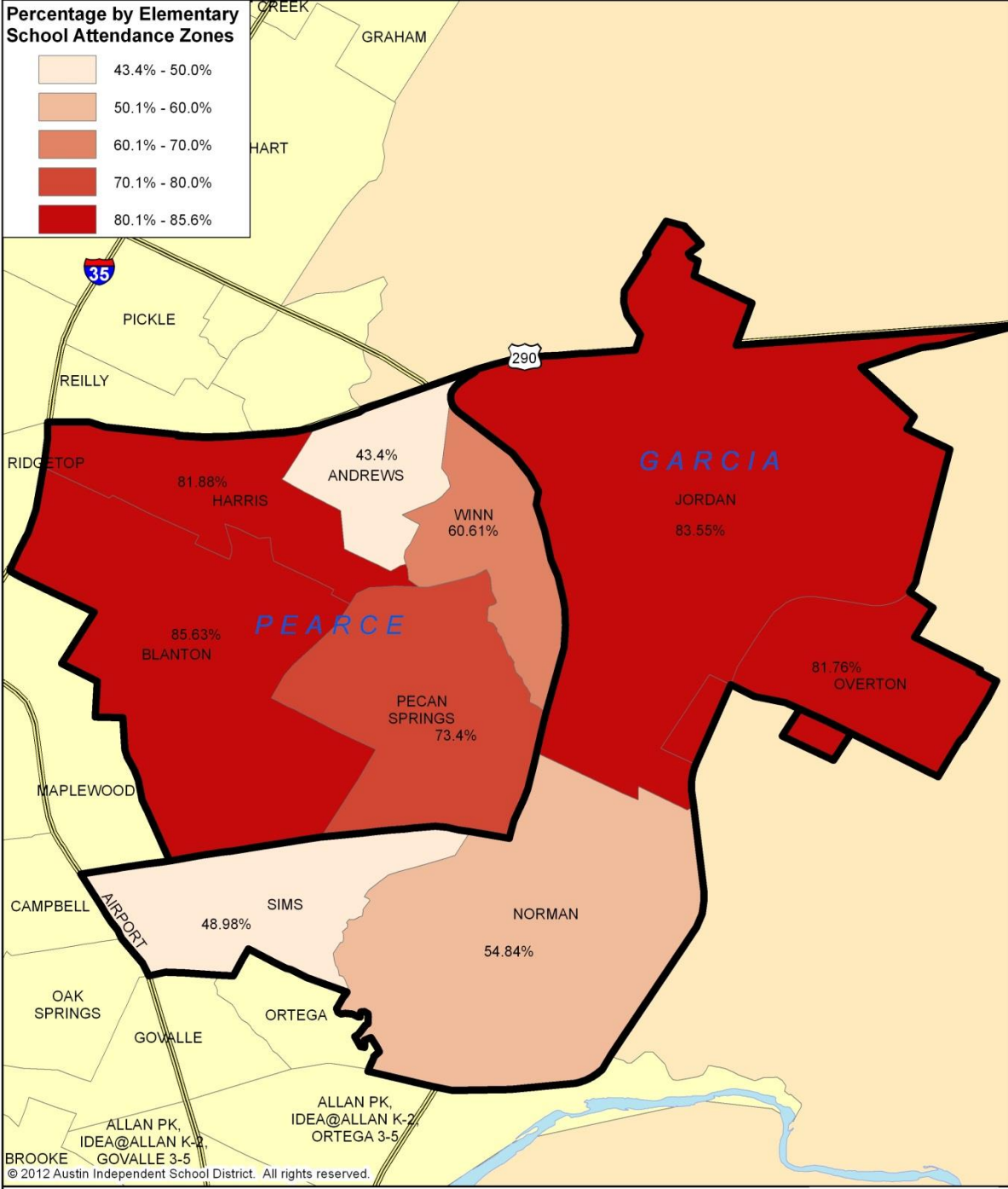
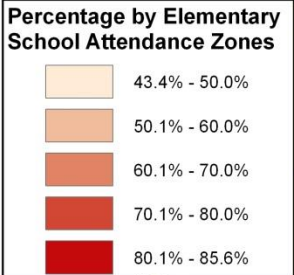
© 2012 Austin Independent School District. All rights reserved.



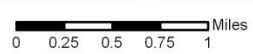
N
 Zoran Stojakovic
 12/6/12



Fall 2012 Pearce and Garcia Phone Survey: Percentage of Respondents that are Hispanic



© 2012 Austin Independent School District. All rights reserved.



Data Sources:
 Austin ISD 2012
 Pearce and Garcia Fall 2012
 Single-Gender Middle School Phone Survey

N
 Zoran Stojakovic
 12/6/12

