

AISD Socioeconomic Overview, 2012–2013

Purpose. These maps were requested by the Office of Academics as part of a data presentation for a meeting of the District Literacy Workgroup. They represent a socioeconomic overview of Austin Independent School District (AISD) schools.

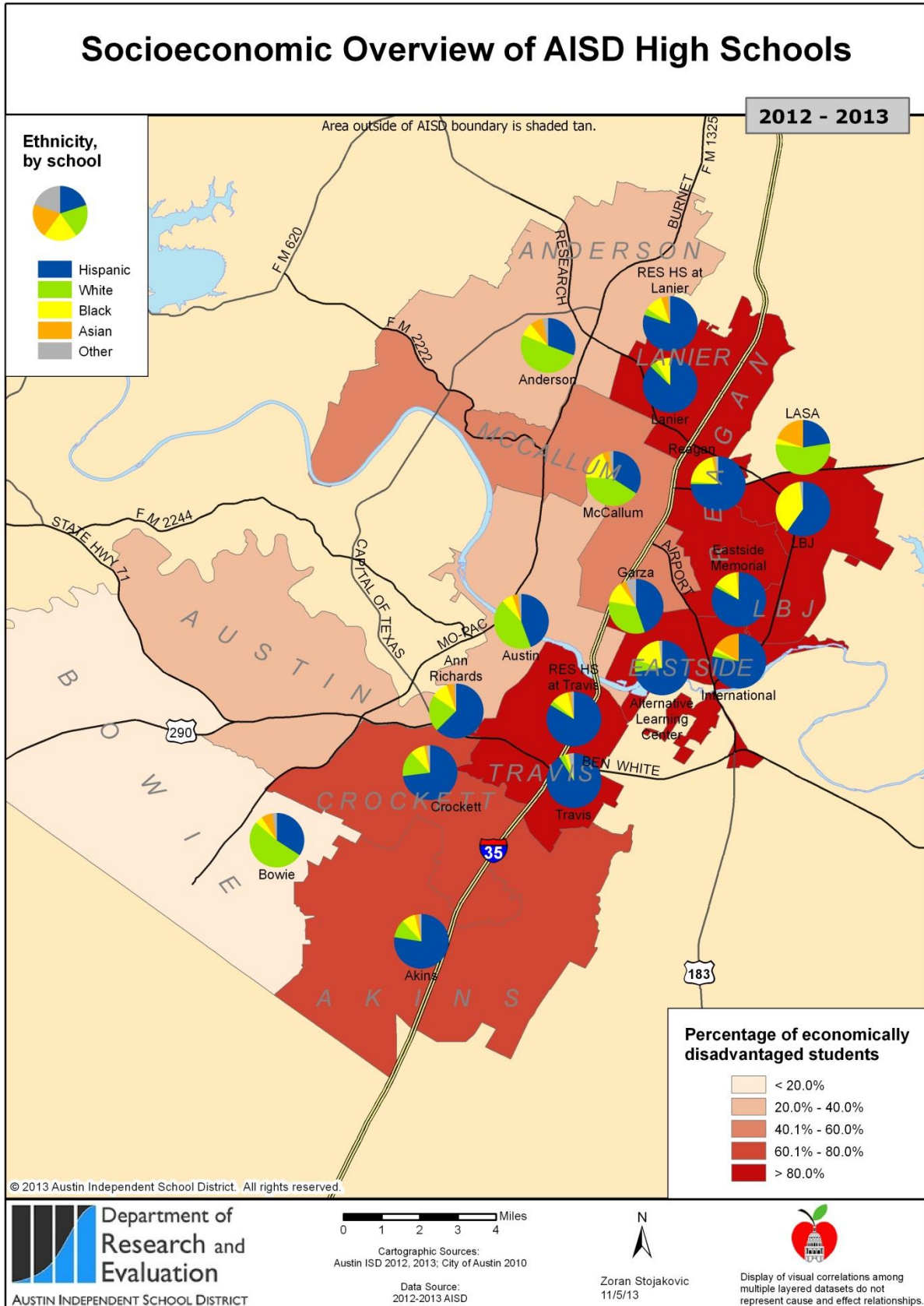
Questions answered. What is the density of economically disadvantaged students across elementary, middle, and high school attendance zones? What is the proportion of specific ethnicities in AISD schools?

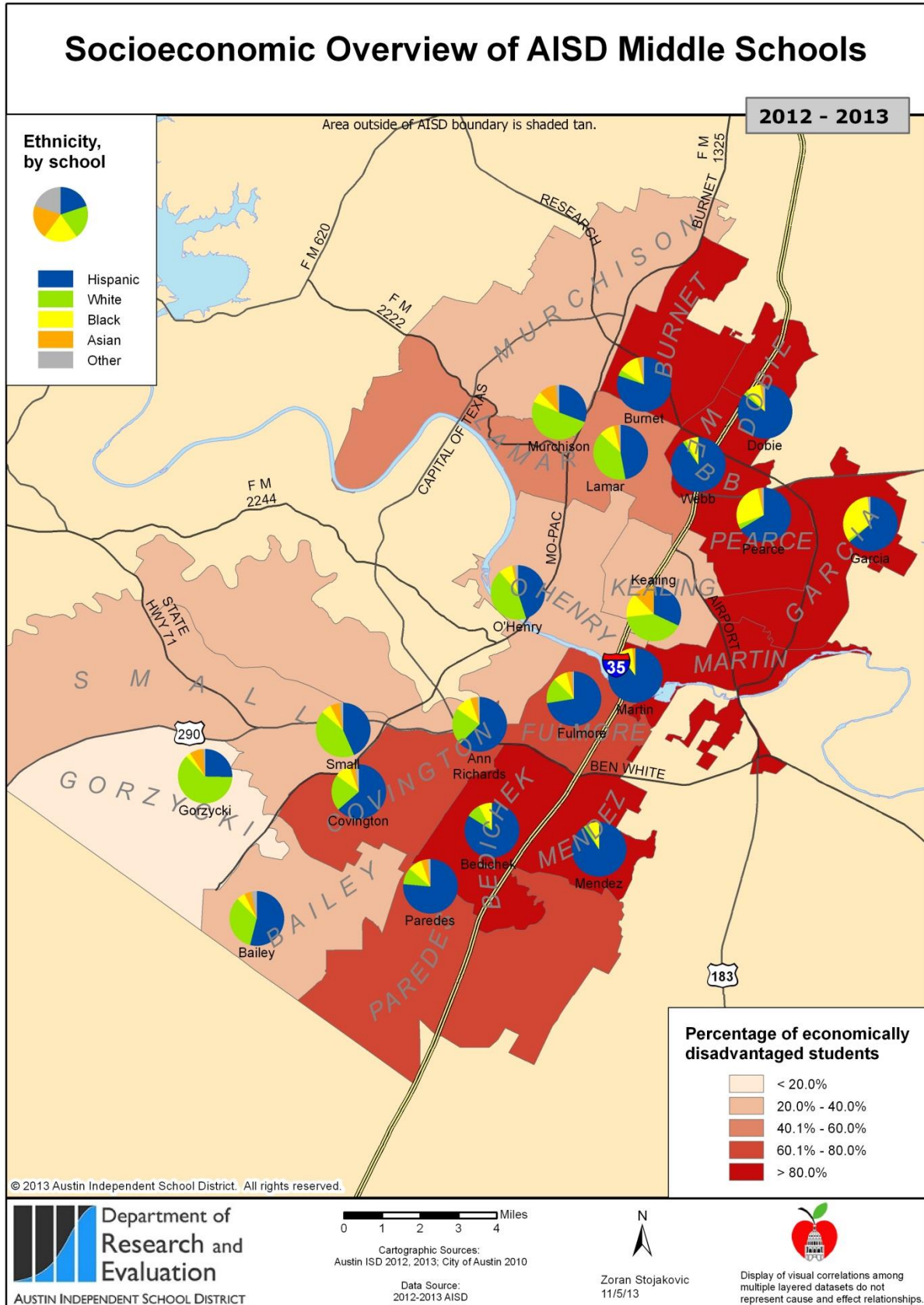
Data elements and methodology. The proportion of economically disadvantaged students, defined as those who qualified for free or reduced price lunch, is mapped for each attendance zone. Student ethnicity is mapped at the campus level.

Conclusions. The maps show general patterns of socioeconomic structure in the district, and the distribution of ethnicities across campuses.

Included Maps

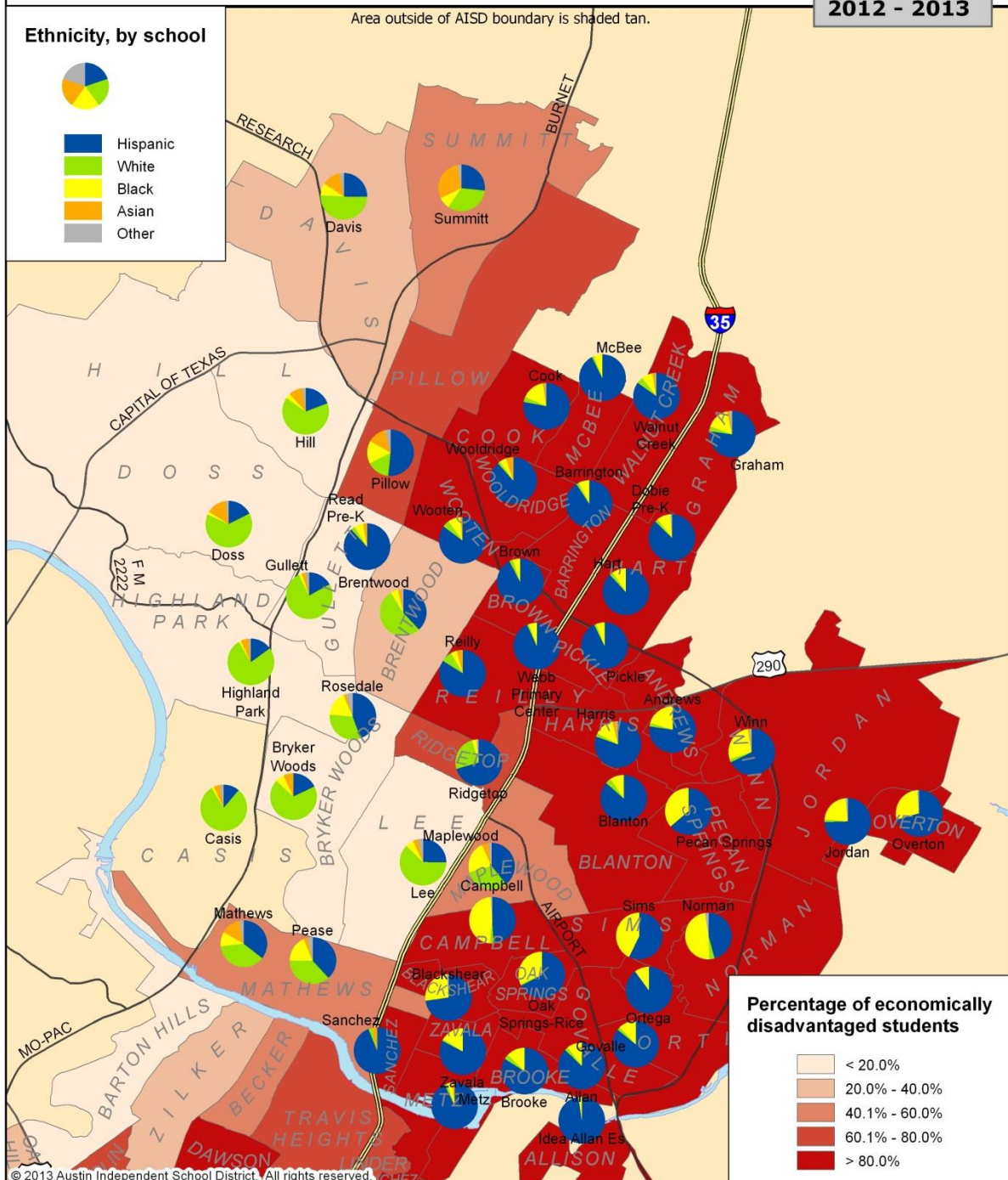
- Page 2. Socioeconomic Overview of AISD High Schools
- Page 3. Socioeconomic Overview of AISD Middle Schools
- Page 4. Socioeconomic Overview of North AISD Elementary Schools
- Page 5. Socioeconomic Overview of South AISD Elementary Schools





Socioeconomic Overview of North AISD Elementary Schools

2012 - 2013



© 2013 Austin Independent School District. All rights reserved.

Department of Research and Evaluation
AUSTIN INDEPENDENT SCHOOL DISTRICT

0 0.5 1 1.5 2 Miles
Cartographic Sources:
Austin ISD 2012, 2013; City of Austin 2010
Data Source:
2012-2013 AISD

N
Zoran Stojakovic
11/5/13

Display of visual correlations among multiple layered datasets do not represent cause and effect relationships.

Socioeconomic Overview of South AISD Elementary Schools

