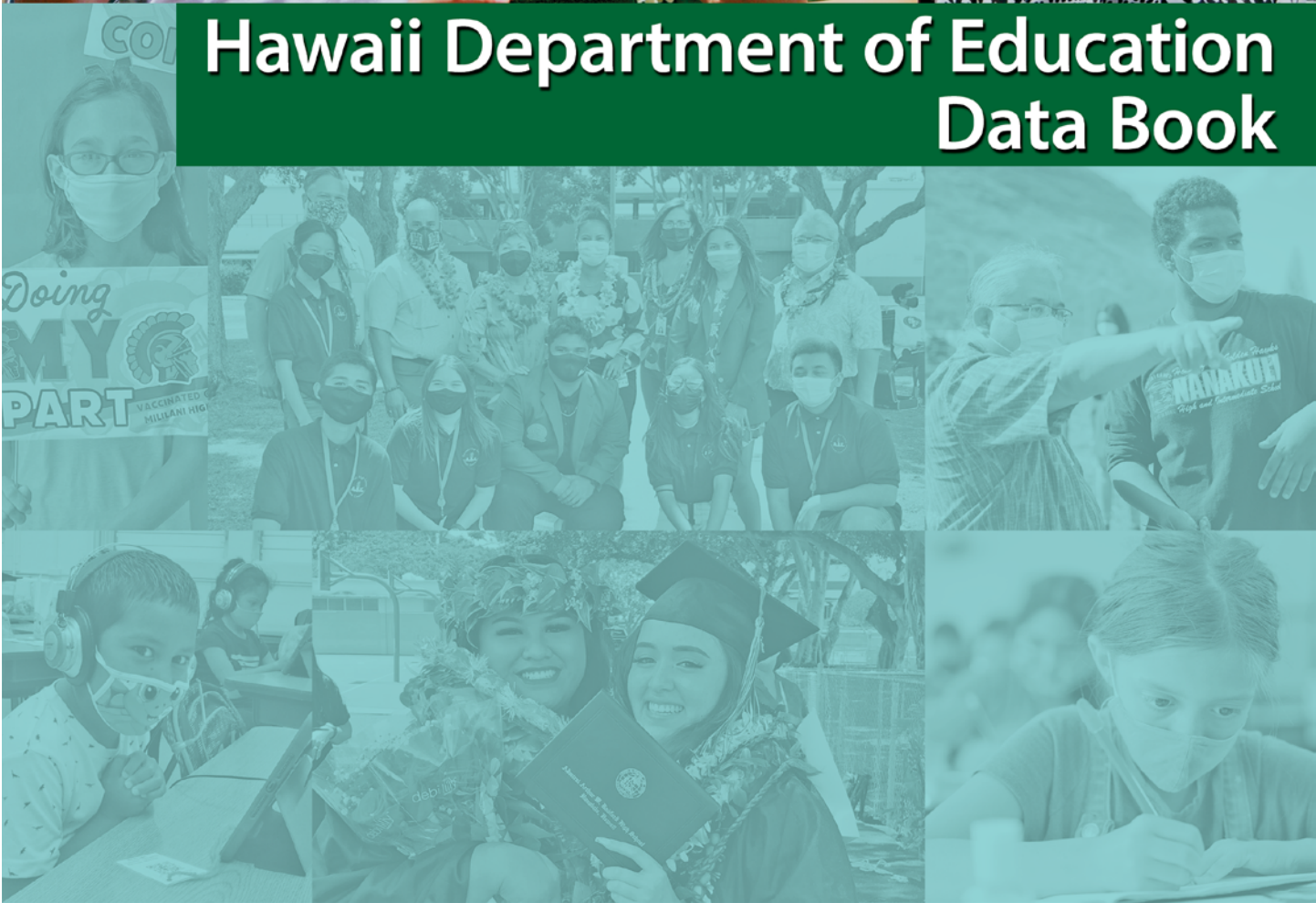




# Hawaii Department of Education Data Book



Office of the Superintendent | 32nd Annual Report | April 2022





**The Honorable David Y. Ige  
Governor, State of Hawaii**

BOARD OF EDUCATION

Catherine Payne, Chairperson  
Kenneth Uemura, Vice Chairperson

William "Bill" Arakaki    Lynn Fallin  
Shanty Asher    Christine "Kili" Namau'u  
Kaimana Barcarse    Bruce Voss  
Lyla Berg    Colonel Angenene L. Robertson (Military Liaison)  
Kyla Musso (Student Representative)

DEPARTMENT OF EDUCATION

Keith T. Hayashi, Interim Superintendent of Education

Phyllis Unebasami, Deputy Superintendent

Heidi Armstrong, Assistant Superintendent  
Office of Student Support Services

Sean Bacon, Interim Assistant Superintendent  
Office of Talent Management

Brian Hallett, Assistant Superintendent & Chief Financial Officer  
Office of Fiscal Services

Christine Shaw, Acting Assistant Superintendent & Chief Information Officer  
Office of Information Technology Services

Randall Tanaka, Assistant Superintendent  
Office of Facilities and Operations

Cara Tanimura, Interim Assistant Superintendent  
Office of Strategy, Innovation and Performance

Teri Ushijima, Interim Assistant Superintendent  
Office of Curriculum and Instructional Design

Rochelle Mahoe, Ph.D.  
Farrington-Kaiser-Kalani Complex Area Superintendent  
Linell Dilwith  
Kaimuki-McKinley-Roosevelt Complex Area Superintendent  
John Erickson  
Aiea-Moanalua-Radford Complex Area Superintendent  
Robert Davis  
Leilehua-Mililani-Waialua Complex Area Superintendent  
Sean Tajima  
Campbell-Kapolei Complex Area Superintendent  
Disa Hauge  
Interim Nanakuli-Waianae Complex Area Superintendent  
Keith Hui  
Pearl City-Waipahu Complex Area Superintendent

Ed Noh, Ed.D.  
Interim Castle-Kahuku Complex Area Superintendent  
Lanelle Hibbs  
Kailua-Kalaheo Complex Area Superintendent  
Chad Keone Farias  
Kau-Keaau-Pahoa Complex Area Superintendent  
Esther Kanehailua  
Hilo-Waiakea Complex Area Superintendent  
Janette Snelling  
Honokaa-Kealakehe-Kohala-Konawaena Complex Area Superintendent  
Jamie Yap  
Baldwin-Kekaulike-Maui Interim Complex Area Superintendent  
Rebecca Winkie  
Hana-Lahainaluna-Lanai-Molokai Complex Area Superintendent

Paul Zina  
Kapaa-Kauai-Waimea Complex Area Superintendent

# Contents

<i>Data Insights</i> .....	1
Students & Schools .....	1
Progress & Outcomes .....	1
Resources & Support .....	1
<i>At-A-Glance</i> .....	2
Table 1.    Official Fall Enrollment for Grades K to 12, Public and Private Schools.....	2
Figure 1.    Percent of Public School Students With Special Needs, Unduplicated Count .....	2
Table 2.    Department of Education Teacher Credentials .....	2
Table 3.    Funding By Source and Year (In Millions) .....	3
Table 4.    Safety and Well-Being.....	3
Table 5.    Hawaii Statewide Assessment Program, Percent Meeting Standard .....	3
Table 6.    Hawaii Statewide Assessment Program, Percent in Each Standard Level .....	4
Figure 2.    Hawaii Statewide Assessment Program, Percent Meeting Standard in Language Arts.....	5
Figure 3.    Hawaii Statewide Assessment Program, Percent Meeting Standard in Mathematics.....	5
Figure 4.    Hawaii Statewide Assessment Program, Percent Meeting Standard in Science .....	5
Table 7.    Four-Year Graduation and Dropout Rates.....	6
Table 8.    High School Diplomas .....	6
Table 9.    Honors Recognition Certificates .....	6
Table 10.    Advanced Placement (AP) Program.....	6
<i>Profiles and Trends</i> .....	7
Table 11.    Number of Public Schools (and Percentage of Total Schools by Type) .....	7
Table 12.    Student Enrollment.....	7
Table 13.    Progress and Completion .....	7
Table 14.    Staff, Full-Time Equivalent Positions .....	8

Table 15.	State Demographics.....	8
School Finance.....		9
Table 16.	State School Budget.....	9
Table 17.	Key Finance Indicators.....	9
Figure 5.	Percentage of State & Local Expenditures per Capita Supporting Public Schools .....	10
Educational Assessments.....		10
Table 18.	National Assessment of Educational Progress (NAEP) .....	10
Figure 6.	National Assessment of Educational Progress (NAEP), Percent Proficient & Advanced in Grade 4 Reading and Mathematics .....	11
Figure 7.	National Assessment of Educational Progress (NAEP), Percent Proficient & Advanced in Grade 8 Reading and Mathematics .....	11
Table 19.	Hawaii Statewide Assessment Program, Percent Meeting Standard .....	12
Table 20.	Students by Complex in SY2020-21 .....	13
Table 21.	Teachers by Complex in SY2020-21 .....	14
Table 22.	SY2020-21 Wellness Indicators by Complex.....	15
Table 23.	Percent Meeting Standard on the Hawaii Statewide Assessment Program English Language Arts Assessments by Grade and Complex for SY2020-21 .....	16
Table 24.	Percent Meeting Standard on the Hawaii Statewide Assessment Program Mathematics Assessments by Grade and Complex for SY2020-21 .....	17
Table 25.	Percent Meeting Standard on the Hawaii Statewide Assessment Program Science Assessments by Grade and Complex for SY2020-21.....	18
<b>Appendices</b> .....		<b>19</b>
Appendix A.	Glossary.....	19
Appendix B.	References and Resources .....	23
Appendix C.	Supplemental Data Tables .....	26

# Data Insights

In School Year (SY) 2020-21, the COVID-19 pandemic continued to raise challenges for Hawaii's public schools. Enrollment was down and 88% of Hawaii public school students received blended or completely virtual instruction (Hawaii State Department of Education, 2021, 2021 Strive HI Statewide Snapshot). These factors may have affected data in the 2020-21 school year such as assessment results and Chapter 19 suspensions.

## Students & Schools

The data highlighted below are for SY2020-21:

- Public school enrollment decreased by 4,627 students to 174,704 (Table 1, page 2).
- Charter school enrollment increased by 336 students, while department school enrollment decreased by 4,963 students (Table 1, page 2).

The data highlighted below are for SY2018-19 to SY2020-21, unless noted:

- Special Education students increased by 440 or less than 1 percentage point (Table 12, page 7).
- English Learner students decreased by 8 or less than 1 percentage point (Table 12, page 7).
- Economically Disadvantaged students increased by 2,119 or 2 percentage points (Table 12, page 7).
- Fifty-six percent of public school students were identified as economically disadvantaged, special education, multiple special needs, Section 504, and/or English Learners. This is an increase of 2 percentage points from SY2019-20 (Figure 1, page 2).
- The percentage of dropouts improved from 11.8% to 10.9%, and the graduation rate rose from 85.1% to 85.9% (Table 7, page 6; Table 13, page 7).

## Progress & Outcomes

### Hawaii State Assessment Program (HSAP)

- Overall language arts achievement decreased by 4 percentage points to 50% and mathematics decreased by 11 percentage points to 32% between SY2018-19 and SY2020-21. Science achievement for SY2020-21 is not comparable to prior years due to the adoption of the Next Generation Science Standards (NGSS). The most recent HSAP results may be found on Table 5, page 3. Grade level achievement may be found on Table 6, page 4.

### National Assessment of Educational Progress (NAEP)

- The NAEP assessment is normally administered every two years (odd years). The most recent NAEP results may be found on Table 18, page 10. In response to the COVID-19 pandemic, the National Center for Education Statistics has postponed the next test administration to 2022.

### Other

- The number of students who took at least one Advanced Placement (AP) exam showed a percent change of 0.9% to 5,979. The number of exams taken showed a percent change of 1.2% to 9,231. The percentage of exams passed decreased 8 percentage points to 43% (Table 10, page 6).
- Student perception of safety improved: Elementary improved 3 percentage points to 71%, Middle improved 6 percentage points to 65%, and High School improved 7 percentage points to 66%. Teachers' perception of safety improved 3 percentage points to 75% (Table 4, page 3).

## Resources & Support

- Hawaii's per-pupil expenditure showed a percent change of 6.4 to \$15,242 for the 2017-18 school year (most current available information) (Table 17, page 9).
- Hawaii ranked 50th (last) in the nation when comparing the percent of state and local expenditures for public education per capita (Table 17, page 9).



# At-A-Glance

Note: Unless otherwise noted, data are about “public schools” and represents both Department and Charter schools; percentages with one decimal place have been truncated at the first decimal place.

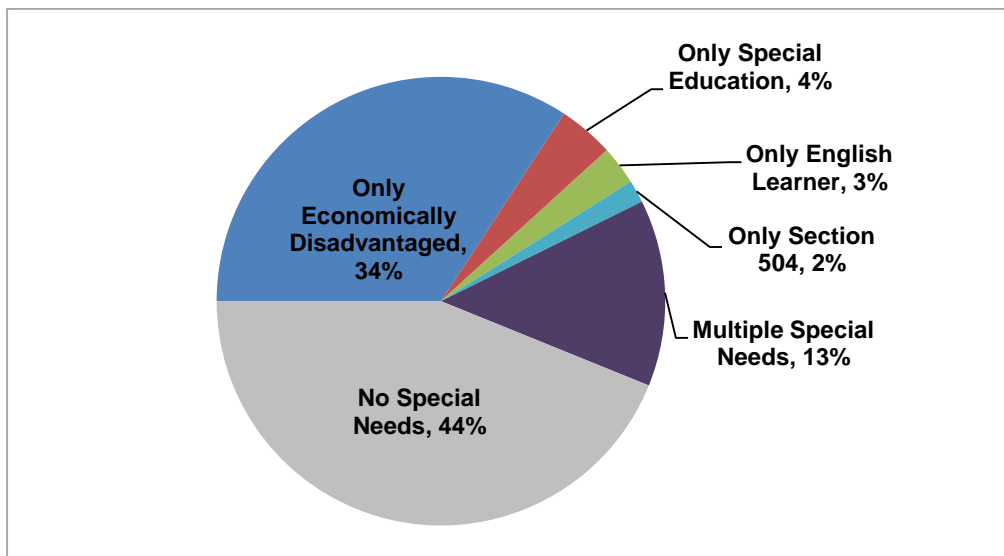
Table 1. Official Fall Enrollment for Grades K to 12, Public and Private Schools

	2018-19	2019-20	2020-21
<b>Public Schools</b>	<b>179,698</b>	<b>179,331</b>	<b>174,704</b>
% of total enrollment	85.1%	85.4%	85.2%
Department schools	168,152	167,454	162,491
% of public schools enrollment	93.5%	93.3%	93.0%
Charter schools	11,546	11,877	12,213
% of public schools enrollment	6.4%	6.6%	6.9%
<b>Private Schools</b>	<b>31,312</b>	<b>30,492</b>	<b>30,306</b>
% of total enrollment	14.8%	14.5%	14.7%
<b>Total</b>	<b>211,010</b>	<b>209,823</b>	<b>205,010</b>

Note: Due to rounding, percentages may not total to 100%.

Sources: Hawaii State Department of Education: Office of Strategy, Innovation and Performance; Assessment and Accountability Branch; Hawaii Association of Independent Schools.

Figure 1. Percent of Public School Students With Special Needs, Unduplicated Count



Note: Graph represents student count as of 12/18/2020.

Source: Hawaii State Department of Education: Office of Strategy, Innovation and Performance; Assessment and Accountability Branch.

Table 2. Department of Education Teacher Credentials

	2018-19	2019-20	2020-21
Fully Licensed	95%	96%	96%
Advanced Degree	38%	38%	38%
5+ Years at the Same School	57%	58%	59%

Note: These figures do not include teachers at Charter schools.

Source: Hawaii State Department of Education: Office of Talent Management.

Table 3. Funding By Source and Year (In Millions)

	2018-19	2019-20	2020-21
<b>Appropriated Funds</b>	\$3,302	\$3,458	\$4,086
<b>State</b>			
General	\$2,930	\$3,078	\$2,914
Special	\$84	\$87	\$87
Trust	\$16	\$16	\$16
<b>Federal</b>	\$272	\$277	\$1,069

Note: Due to rounding, total of State and Federal funds may not equal Appropriated Funds. Federal funding increased to \$1,069 in 2020-21. The increase was comprised of new non-appropriated grant awards (~67%), and prior year carryover (33%). The carryover balance represents unspent carryover grant balances from previous grant awards.

Source: Hawaii State Department of Education: Office of Fiscal Services.

Table 4. Safety and Well-Being

	2018-19	2019-20	2020-21
<b>Students Not Suspended</b>	96%	97%	100%
<b>Safety % Positive Responses</b>			
Students			
Elementary	71%	68%	71%
Middle	64%	59%	65%
High	64%	59%	66%
Teachers	74%	72%	75%
<b>Well-Being % Positive Responses</b>			
Teachers	74%	73%	74%

Note: Students Not Suspended does not include Charter schools.

Source: Hawaii State Department of Education: Office of Strategy, Innovation and Performance; Assessment and Accountability Branch.

Table 5. Hawaii Statewide Assessment Program, Percent Meeting Standard

	2018-19	2019-20	2020-21
Language Arts	54%	--	50%
Mathematics	43%	--	32%
Science	44%*	--	35%

Note: Due to the COVID-19 pandemic and subsequent ED waiver from testing, there are no results for SY2019-20. Results are based on **students enrolled for the school year**.

Language Arts and Mathematics assessments include the Smarter Balanced Assessment (SBA), HSA-Alternate (HSA-Alt) and Kaiapuni Assessment of Educational Outcomes (KAEO). The Science assessment includes the HSA Science, Biology I End-of-Course Exam, HSA-Alt and KAEO. Beginning SY2020-21, the Next Generation Science Standards (NGSS) replaced the Hawaii Content and Performance Standards III (HCPS III). This resulted in the elementary tested grade moving from 4 to 5. No changes were made to other tested grades (8 and high school [HS]).

\*Result based on the NGSS bridge test.

Source: Hawaii State Department of Education: Office of Strategy, Innovation and Performance; Assessment and Accountability Branch.

Table 6. Hawaii Statewide Assessment Program, Percent in Each Standard Level

Language Arts								
Grade	2018-19				2020-21			
	Not Met	Nearly Met	Met	Exceeded	Not Met	Nearly Met	Met	Exceeded
3	26%	22%	23%	29%	34%	24%	20%	22%
4	30%	18%	24%	28%	34%	20%	23%	23%
5	25%	19%	30%	26%	29%	20%	28%	23%
6	23%	25%	33%	19%	27%	27%	30%	16%
7	25%	23%	35%	18%	24%	24%	36%	16%
8	23%	25%	34%	18%	23%	26%	35%	16%
11	18%	23%	33%	26%	13%	22%	37%	27%
Mathematics								
Grade	2018-19				2020-21			
	Not Met	Nearly Met	Met	Exceeded	Not Met	Nearly Met	Met	Exceeded
3	23%	22%	29%	27%	36%	24%	24%	16%
4	21%	30%	28%	21%	32%	32%	22%	14%
5	29%	27%	19%	25%	41%	27%	16%	16%
6	31%	28%	21%	19%	42%	29%	16%	13%
7	35%	26%	20%	18%	41%	30%	18%	11%
8	37%	24%	18%	20%	48%	27%	14%	11%
11	42%	28%	20%	10%	42%	30%	19%	9%
Science								
Grade	2018-19*				2020-21			
	Well-Below	Approaches	Meets	Exceeds	Not Met	Nearly Met	Met	Exceeded
4	9%	34%	43%	14%	--	--	--	--
5	--	--	--	--	26%	38%	26%	10%
8	29%	30%	30%	11%	35%	32%	26%	8%
High School	26%	39%	25%	9%	31%	35%	24%	10%

Note: Due to the COVID-19 pandemic and subsequent ED waiver from testing, there are no results for SY2019-20. Results are based on **students enrolled for the school year**.

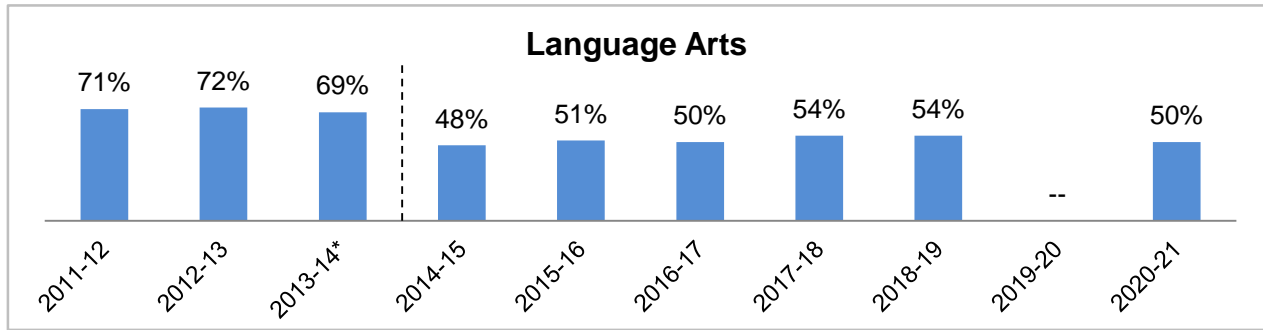
Language Arts and Mathematics assessments include the SBA, HSA-Alt and KAEO. The Science assessment includes the HSA Science, Biology I End-of-Course Exam, HSA-Alt and KAEO. Beginning SY2020-21, the NGSS replaced the HCPS III. This resulted in the elementary tested grade moving from 4 to 5. No changes were made to other tested grades (8 and HS). The achievement rates for high school students are based on students who were administered either the Biology I End-of-Course Exam or the HSA-Alt for grade 11.

\*Result based on the NGSS bridge test.

Source: Hawaii State Department of Education: Office of Strategy, Innovation and Performance; Assessment and Accountability Branch.



Figure 2. Hawaii Statewide Assessment Program, Percent Meeting Standard in Language Arts



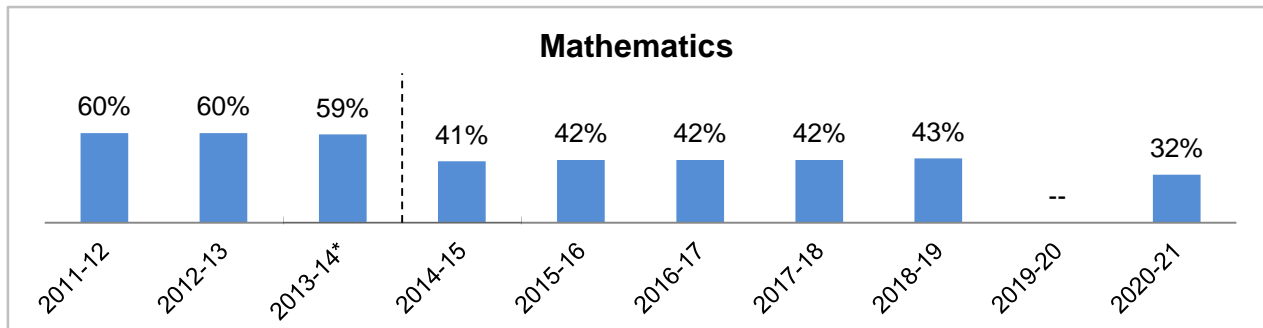
Note: Due to the COVID-19 pandemic and subsequent ED waiver from testing, there are no results for SY2019-20. Results are based on **students enrolled for the school year**.

The Language Arts assessment includes the SBA, HSA-Alt and KAE0. Beginning 2014-15, the SBA was administered replacing the HSA summative assessment. This resulted in the HS tested grade moving from 10 to 11. No changes were made to other tested grades (grades 3 - 8).

\*Result based on the SBA bridge test.

Source: Hawaii State Department of Education: Office of Strategy, Innovation and Performance; Assessment and Accountability Branch.

Figure 3. Hawaii Statewide Assessment Program, Percent Meeting Standard in Mathematics



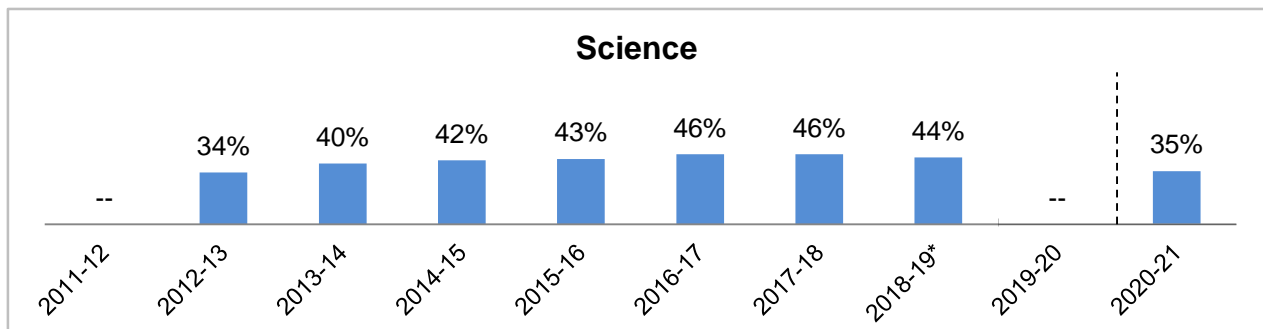
Note: Due to the COVID-19 pandemic and subsequent ED waiver from testing, there are no results for SY2019-20. Results are based on **students enrolled for the school year**.

The Mathematics assessment includes the SBA, HSA-Alt and KAE0. Beginning 2014-15, the SBA was administered replacing the HSA summative assessment. This resulted in the HS tested grade moving from 10 to 11. No changes were made to other tested grades (grades 3 - 8).

\*Result based on the SBA bridge test.

Source: Hawaii State Department of Education: Office of Strategy, Innovation and Performance; Assessment and Accountability Branch.

Figure 4. Hawaii Statewide Assessment Program, Percent Meeting Standard in Science



Note: Due to the COVID-19 pandemic and subsequent ED waiver from testing, there are no results for SY2019-20. Results are based on **students enrolled for the school year**.

The Science assessment includes the HSA Science, Biology I End-of-Course Exam, HSA-Alt and KAE0. Beginning SY2020-21, the NGSS replaced the HCPS III. This resulted in the elementary tested grade moving from 4 to 5. No changes were made to other tested grades (8 and HS).

\*Result based on the NGSS bridge test.

Source: Hawaii State Department of Education: Office of Strategy, Innovation and Performance; Assessment and Accountability Branch.

Table 7. Four-Year Graduation and Dropout Rates

	2018-19	2019-20	2020-21
Graduation	85.1%	86.2%	85.9%
Dropouts	11.8%	10.8%	10.9%
Others*	2.9%	2.8%	3.0%

Note: Due to rounding, percentages may not total to 100%.

\*Others include high school completers who received a special education certificate of completion in lieu of a diploma and students who are still attending school and did not graduate within the four-year time frame.

Source: Hawaii State Department of Education: Office of Strategy, Innovation and Performance; Assessment and Accountability Branch.

Table 8. High School Diplomas

	2018-19	2019-20*	2020-21
Regular Diploma	95.4%	94.8%	93.7%

Note: \*Due to the COVID-19 pandemic and closing of schools after the 3rd quarter, graduation requirements were modified in SY2019-20.

Source: Hawaii State Department of Education: Office of Strategy, Innovation and Performance; Assessment and Accountability Branch.

Table 9. Honors Recognition Certificates

	2018-19	2019-20	2020-21
Academic Honors Recognition Certificate	25.5%	24.0%	25.6%
CTE Honors Recognition Certificate	14.9%	15.0%	17.3%
STEM Honors Recognition Certificate	3.8%	3.3%	4.3%

Note: Each percent is the percentage based on the number of students in the respective class.

Source: Hawaii State Department of Education: Office of Strategy, Innovation and Performance; Assessment and Accountability Branch.

Table 10. Advanced Placement (AP) Program

	2018-19	2019-20	2020-21
Number of students enrolled in at least one AP course	6,956	6,960	6,104
Number of students who took at least one AP exam	6,985	5,921	5,979
Number of exams taken	10,763	9,115	9,231
Number of AP exam results with a score of 3 or higher	4,745	4,691	3,949
Percent of exams passed	44%	51%	43%

Source: Hawaii State Department of Education: Office of Curriculum and Instructional Design.

# Profiles and Trends

Table 11. Number of Public Schools (and Percentage of Total Schools by Type)

Type of School	2018-19		2019-20		2020-21	
<b>Total</b>	<b>292</b>	<b>100%</b>	<b>293</b>	<b>100%</b>	<b>294</b>	<b>100%</b>
Department Schools						
Elementary	168	58%	168	57%	168	57%
Middle/Intermediate	38	13%	38	13%	39	13%
High	33	11%	33	11%	33	11%
Multi-Level	16	5%	16	5%	16	5%
Special (HSDB*)	1	<1%	1	<1%	1	<1%
Charter Schools	36	12%	37	13%	37	13%
<b>Complex Areas</b>	<b>15</b>	n/a	<b>15</b>	n/a	<b>15</b>	n/a

Note: \*Hawaii School for the Deaf & Blind.

Source: Hawaii State Department of Education: Office of Strategy, Innovation and Performance; Assessment and Accountability Branch.

Table 12. Student Enrollment

Enrollment	2018-19		2019-20		2020-21	
<b>Official Enrollment Count</b>	179,698	100%	179,331	100%	174,704	100%
K-6	100,873	56%	99,436	55%	94,292	54%
7-8	27,626	15%	27,853	16%	27,883	16%
9-12	51,199	28%	52,042	29%	52,529	30%
Special Education (SPED)	17,591	10%	17,960	10%	18,031	10%
English Learner (EL)	16,275	9%	16,986	9%	16,267	9%
Economically Disadvantaged*	85,760	48%	84,993	47%	87,879	50%

Note: Due to rounding, enrollment percentages may not total to 100%.

\*Students whose family income qualifies them for assistance through the National School Lunch Program are included in the "economically disadvantaged" count. Also included are estimated counts of students based on the Community Eligibility Provision (CEP) requirements established by the U.S. Department of Agriculture.

Source: Hawaii State Department of Education: Office of Strategy, Innovation and Performance; Assessment and Accountability Branch.

Table 13. Progress and Completion

	2018-19	2019-20	2020-21
<b>Daily Average Attendance Rates</b>			
Elementary	94.5%	94.4%	93.6%
Middle/Intermediate	94.3%	94.6%	93.5%
High	92.6%	92.3%	91.5%
Multi-Level	91.2%	91.4%	89.7%
Charter	93.9%	94.0%	94.8%
<b>Retention Rates</b>			
Elementary	<0.5%	<0.5%	<0.5%
Middle/Intermediate	0.6%	<0.5%	0.8%
<b>Four-Year Graduation and Dropout Rates</b>			
Graduation	85.1%	86.2%	85.9%
Dropouts	11.8%	10.8%	10.9%
Others*	2.9%	2.8%	3.0%

Note: Due to rounding, Four-Year Graduation and Dropout percentages may not total to 100%.

\*Others include high school completers who received a special education certificate of completion in lieu of a diploma and students who are still attending school and did not graduate within the four-year time frame.

Source: Hawaii State Department of Education: Office of Strategy, Innovation and Performance; Assessment and Accountability Branch.

Table 14. Staff, Full-Time Equivalent Positions

Positions	2018-19	2019-20	2020-21
<b>Teachers</b>			
Classroom Teachers	11,819.1	11,898.7	11,837.9
Librarians	134.5	125.5	114.0
Counselors	659.7	660.4	659.0
<b>Administrators</b>			
School	716.7	740.0	735.0
State & Complex Area	339.5	353.0	360.0
<b>Other Support Staff</b>	9,194.3	9,236.5	9,245.7
<b>Total</b>	<b>22,863.8</b>	<b>23,014.1</b>	<b>22,951.6</b>

Source: Hawaii State Department of Education: Office of Strategy, Innovation and Performance; Assessment and Accountability Branch.

Table 15. State Demographics

Census Data	2017 Est.	2018 Est.	2019 Est.
<b>Populations</b>	1,421,658	1,422,029	1,422,094
Youth Age Under 5 Years	91,417	90,388	88,842
Youth Age 5-9	84,608	85,114	84,852
Youth Age 10-14	84,030	83,667	83,615
Youth Age 15-19	78,077	77,674	77,712
Median Age, in Years	38.8	38.9	39.1
<b>Households</b>			
Total	455,502	456,782	459,424
Families	317,764	319,069	319,348
Avg. Family Size	3.59	3.58	3.58
<b>Income*</b>			
Median Family Income	\$87,024	\$90,935	\$94,982
Per Capita Income	\$32,511	\$34,035	\$35,567
Poverty, Families In	7.0%	6.7%	6.4%
<b>Educational Attainment</b>			
Percent High School or Higher	91.6%	91.8%	92.0%
Percent 4-yr Degree or Higher	32.0%	32.5%	33.0%

Note: Percentage figures are rounded at the first decimal place.

\*Income figures are reported in inflation adjusted dollars, using 5-year estimates.

Source: U.S. Census Bureau; American Community Survey.

## School Finance

Table 16. State School Budget

	2018-19	2019-20	2020-21
<b>APPROPRIATED FUNDS (millions)</b>			
<b>State</b>			
General	\$2,930	\$3,078	\$2,914
Special	\$84	\$87	\$87
Trust	\$16	\$16	\$16
<b>Federal</b>	\$272	\$277	\$1,069
<b>TOTAL</b>	\$3,302	\$3,458	\$4,086
<b>EXPENDITURES (millions)</b>			
<b>State</b>			
General	\$2,883	\$2,956	\$2,819
Special	\$47	\$40	\$20
Trust	\$15	\$5	\$4
<b>Federal</b>	\$257	\$282	\$375
<b>TOTAL</b>	\$3,202	\$3,283	\$3,218

Note: Figures include both expenditures and encumbrances for Department and Charter schools.

Due to rounding, total of State and Federal funds may not equal Appropriated Funds. Federal funding increased to \$1,069 in 2020-21. The increase was comprised of new non-appropriated grant awards (~67%), and prior year carryover (33%). The carryover balance represents unspent carryover grant balances from previous grant awards.

Source: Hawaii State Department of Education: Office of Fiscal Services.

Table 17. Key Finance Indicators

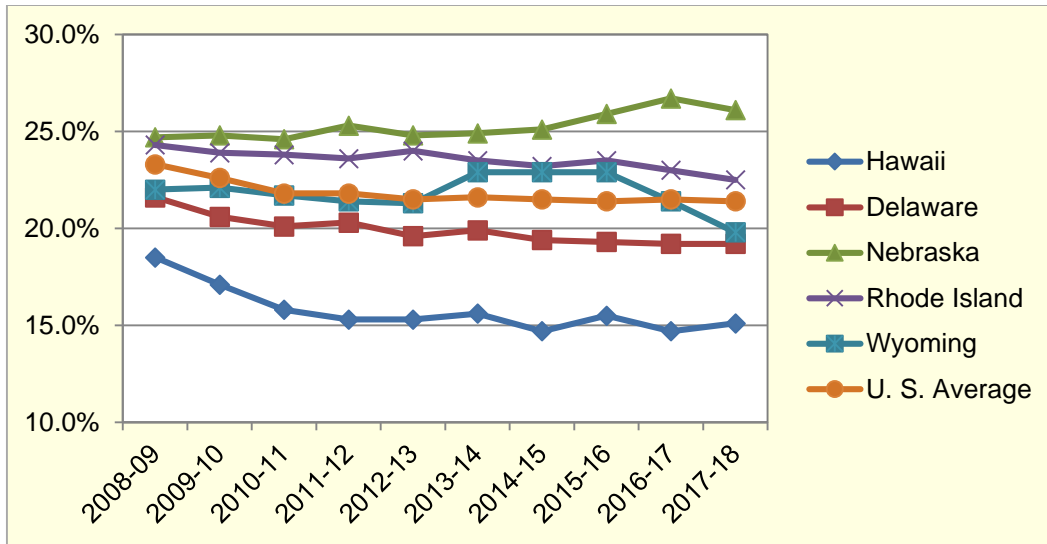
	2015-16	2016-17	2017-18
Per-pupil expenditure	\$13,748	\$14,322	\$15,242
Percent state & local expenditures for public education (per capita)	15.5%	14.7%	15.1%
<b>Rank*</b>	50th	50th	50th

Note: Data reported was the most current available at the time of publication.

\*Rank is determined by comparing the "Percent state and local expenditures for public education (per capita)" of Hawaii to that of the other 49 states.

Sources: U.S. Census Bureau; National Center for Education Statistics.

Figure 5. Percentage of State & Local Expenditures per Capita Supporting Public Schools



Note: Comparisons are made with states most similar to Hawaii on measures directly related to school finance. Measures include K-12 enrollment, population, per capita income, per capita state and local revenue, and per capita state and local expenditures. Data reported was the most current data available at the time of publication.

Source: Digest of Education Statistics, National Center for Education Statistics, ED.

## Educational Assessments

Table 18. National Assessment of Educational Progress (NAEP)

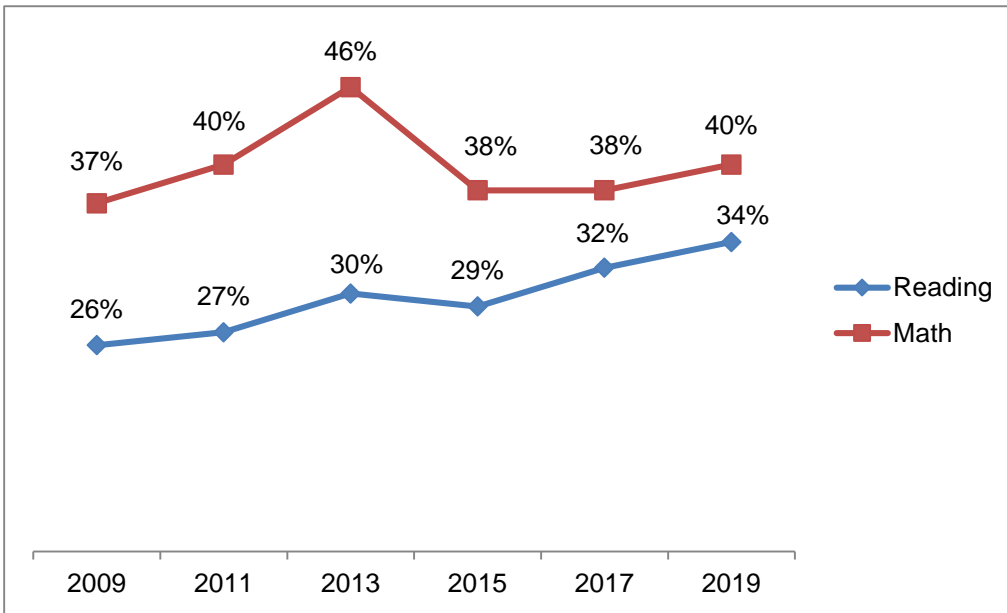
NAEP Assessment	2015		2017		2019	
	Hawaii	Nation	Hawaii	Nation	Hawaii	Nation
<i>(Percent Proficient &amp; Advanced)</i>						
<b>Reading</b>						
Grade 4	29%	35%	32%	36%	34%	34%
Grade 8	26%	33%	30%	36%	29%	32%
<b>Mathematics</b>						
Grade 4	38%	39%	38%	40%	40%	40%
Grade 8	30%	32%	27%	34%	28%	33%
<b>Science</b>						
Grade 4	30%	37%	--	--	--	--
Grade 8	23%	33%	--	--	--	--

Note: Data reported was the most current data available at the time of publication. There was no testing in 2021.

Source: Hawaii State Department of Education: Office of Strategy, Innovation and Performance; Assessment and Accountability Branch.



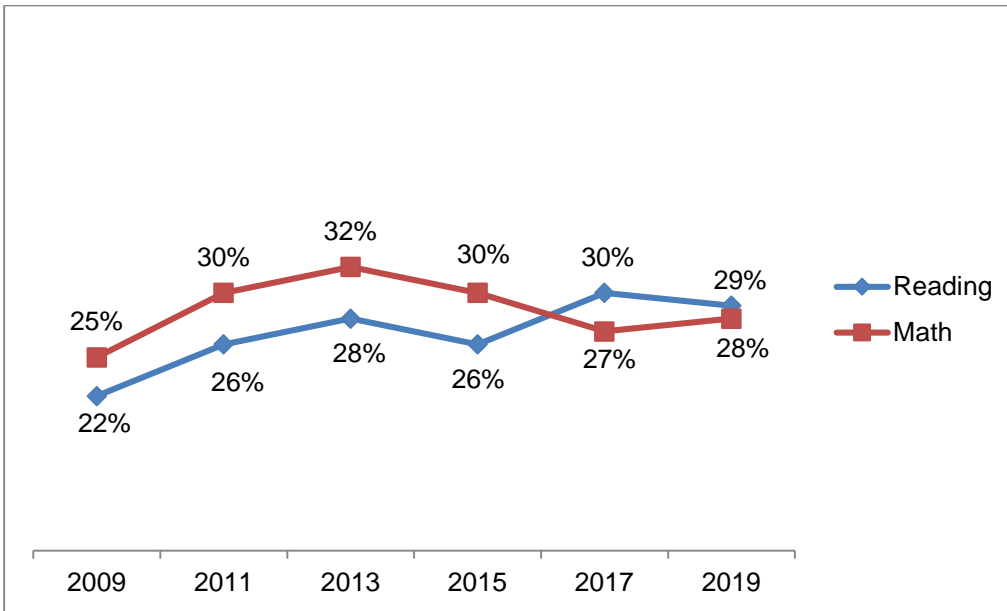
Figure 6. National Assessment of Educational Progress (NAEP), Percent Proficient & Advanced in Grade 4 Reading and Mathematics



Note: Data reported was the most current data available at the time of publication. There was no testing in 2021.

Source: Hawaii State Department of Education: Office of Strategy, Innovation and Performance; Assessment and Accountability Branch.

Figure 7. National Assessment of Educational Progress (NAEP), Percent Proficient & Advanced in Grade 8 Reading and Mathematics



Note: Data reported was the most current data available at the time of publication. There was no testing in 2021.

Source: Hawaii State Department of Education: Office of Strategy, Innovation and Performance; Assessment and Accountability Branch.

Table 19. Hawaii Statewide Assessment Program, Percent Meeting Standard

2016 17				2017 18		
Grade	All Schools	Department Schools Only	Charter Schools Only	All Schools	Department Schools Only	Charter Schools Only
<b>English Language Arts</b>						
3	<b>48.4%</b>	48.9%	38.7%	<b>52.6%</b>	53.0%	46.3%
4	<b>48.4%</b>	48.7%	42.7%	<b>50.8%</b>	51.3%	41.9%
5	<b>53.1%</b>	53.8%	43.6%	<b>56.0%</b>	56.2%	53.8%
6	<b>49.3%</b>	49.5%	47.3%	<b>52.6%</b>	52.6%	52.6%
7	<b>49.6%</b>	49.1%	56.1%	<b>52.1%</b>	52.0%	53.7%
8	<b>47.1%</b>	47.0%	48.3%	<b>54.5%</b>	54.3%	57.2%
11	<b>56.9%</b>	57.1%	53.3%	<b>60.0%</b>	60.1%	57.5%
<b>Mathematics</b>						
3	<b>52.7%</b>	53.3%	41.5%	<b>54.2%</b>	55.2%	39.0%
4	<b>48.1%</b>	48.5%	41.2%	<b>47.3%</b>	48.0%	35.4%
5	<b>42.1%</b>	42.6%	34.6%	<b>42.9%</b>	43.3%	36.4%
6	<b>40.8%</b>	41.1%	36.8%	<b>41.4%</b>	41.9%	34.7%
7	<b>36.5%</b>	36.4%	37.6%	<b>37.1%</b>	37.2%	36.5%
8	<b>37.6%</b>	38.1%	29.9%	<b>38.6%</b>	39.2%	29.8%
11	<b>31.0%</b>	31.4%	22.1%	<b>32.0%</b>	32.3%	23.9%
<b>Science</b>						
4	<b>56.8%</b>	57.3%	46.3%	<b>56.3%</b>	56.9%	47.0%
8	<b>42.0%</b>	42.7%	33.1%	<b>43.6%</b>	43.8%	40.4%
HS	<b>35.9%</b>	35.6%	43.6%	<b>34.6%</b>	34.5%	38.3%
2018 19				2020 21		
Grade	All Schools	Department Schools Only	Charter Schools Only	All Schools	Department Schools Only	Charter Schools Only
<b>English Language Arts</b>						
3	<b>52.3%</b>	52.6%	48.5%	<b>42.9%</b>	42.9%	43.3%
4	<b>51.5%</b>	52.0%	44.0%	<b>46.2%</b>	46.5%	41.8%
5	<b>56.7%</b>	57.2%	49.5%	<b>50.6%</b>	50.7%	48.6%
6	<b>52.4%</b>	52.3%	54.0%	<b>46.5%</b>	46.5%	46.2%
7	<b>52.8%</b>	52.6%	56.1%	<b>51.8%</b>	51.7%	52.7%
8	<b>51.5%</b>	51.4%	53.2%	<b>51.0%</b>	50.8%	53.9%
11	<b>58.7%</b>	58.7%	60.1%	<b>64.4%</b>	64.5%	62.2%
<b>Mathematics</b>						
3	<b>55.7%</b>	56.4%	45.3%	<b>40.5%</b>	40.7%	36.6%
4	<b>48.1%</b>	49.0%	35.0%	<b>36.1%</b>	36.3%	33.2%
5	<b>44.1%</b>	44.8%	32.5%	<b>31.8%</b>	32.1%	27.1%
6	<b>40.6%</b>	41.1%	34.5%	<b>28.9%</b>	29.3%	25.2%
7	<b>38.2%</b>	38.5%	34.3%	<b>29.3%</b>	29.4%	27.6%
8	<b>37.8%</b>	38.4%	30.1%	<b>24.7%</b>	24.8%	24.2%
11	<b>30.1%</b>	30.2%	27.1%	<b>27.9%</b>	28.1%	24.5%
<b>Science</b>						
4	<b>56.7%</b>	57.1%	50.7%	--	--	--
5	--	--	--	<b>36.6%</b>	36.6%	37.4%
8	<b>40.7%</b>	40.5%	44.5%	<b>33.0%</b>	32.6%	38.6%
HS	<b>34.7%</b>	34.6%	36.2%	<b>34.0%</b>	33.9%	36.8%

Note: Due to the COVID-19 pandemic and subsequent ED waiver from testing, there are no results for SY2019-20.

Achievement rates for English Language Arts and Mathematics are based on **all students tested** who were administered either the SBA or HSA-Alt in that subject.

Achievement rates for Science are based on **all students tested** who were administered either the HSA Science, HSA-Alt, or Biology I End-of-Course Exam. Beginning SY2020-21, the NGSS replaced the HCPS III. This resulted in the elementary tested grade moving from 4 to 5. No changes were made to other tested grades (8 and HS). The achievement rates for high school students are based on students who were administered either the Biology I End-of-Course Exam or the HSA-Alt for grade 11.

SY2018-19 Science results based on the NGSS bridge test.

Source: Hawaii State Department of Education: Office of Strategy, Innovation and Performance; Data Governance and Analysis Branch.

Table 20. Students by Complex in SY2020-21

	Enrollment*	Economically Disadvantaged	Special Education	EL	Graduated On Time
<b>ALL SCHOOLS</b>	<b>174,704</b>	<b>87,879</b>	<b>18,031</b>	<b>16,267</b>	<b>86%</b>
<i>Department Schools</i>	162,491	81,838	16,985	15,947	86%
<b>HONOLULU: 2 Complex Areas / 6 Complexes</b>					
Farrington	7,059	70%	8%	28%	73%
Kaiser	3,682	15%	8%	4%	96%
Kalani	4,394	21%	8%	10%	97%
Kaimuki	3,578	62%	12%	26%	62%
McKinley	4,149	68%	10%	29%	69%
Roosevelt	5,895	39%	8%	8%	87%
<b>CENTRAL: 2 Complex Areas / 6 Complexes</b>					
Aiea	3,517	50%	11%	11%	92%
Moanalua	4,797	30%	9%	6%	94%
Radford	5,154	27%	12%	5%	92%
Leilehua	6,621	56%	13%	8%	90%
Mililani	7,682	21%	9%	2%	97%
Waialua	1,312	47%	11%	4%	94%
<b>LEEWARD: 3 Complex Areas / 6 Complexes</b>					
Campbell	10,633	38%	8%	6%	86%
Kapolei	6,440	40%	11%	4%	92%
Pearl City	6,004	35%	9%	7%	91%
Waipahu	8,239	58%	8%	21%	86%
Nanakuli	2,061	85%	17%	6%	84%
Waianae	4,993	85%	17%	6%	81%
<b>WINDWARD: 2 Complex Areas / 4 Complexes</b>					
Castle	4,377	49%	15%	3%	81%
Kahuku	3,287	53%	12%	3%	86%
Kailua	2,413	55%	14%	3%	80%
Kalaheo	3,560	24%	11%	2%	90%
<b>HAWAII: 3 Complex Areas / 9 Complexes</b>					
Hilo	4,149	70%	14%	8%	80%
Waiakea	3,600	54%	10%	4%	90%
Kau	922	n/a	10%	22%	71%
Keaau	3,051	90%	13%	8%	90%
Pahoa	1,528	n/a	17%	7%	87%
Honokaa	1,711	68%	12%	7%	94%
Kealakehe	4,144	63%	9%	18%	81%
Kohala	777	66%	14%	7%	89%
Konawaena	3,282	66%	8%	14%	88%
<b>MAUI: 2 Complex Areas / 7 Complexes</b>					
Baldwin	4,150	51%	9%	8%	79%
Kekaulike	4,180	53%	12%	3%	76%
Maui	7,062	50%	9%	16%	81%
Hana	373	59%	12%	0%	93%
Lahainaluna	3,137	58%	9%	16%	84%
Lanai	565	51%	14%	15%	93%
Molokai	899	78%	15%	1%	89%
<b>KAUAI: 1 Complex Area / 3 Complexes</b>					
Kapaa	3,007	49%	11%	6%	96%
Kauai	3,705	50%	9%	8%	89%
Waimea	2,344	56%	9%	7%	87%
<b>SPECIAL</b>					
Hawaii School for Deaf & Blind	58	66%	n/a	33%	n/a
<b>Charter Schools</b>	<b>12,213</b>	<b>6,041</b>	<b>1,046</b>	<b>320</b>	<b>86%</b>

Note: \*Based on the Official Enrollment Count for Fall 2020.

Source: Hawaii State Department of Education: Office of Strategy, Innovation and Performance; Assessment and Accountability Branch.

Table 21. Teachers by Complex in SY2020-21

		Classroom Teachers (Headcount)	Fully Licensed	5+ Years at Same School	Advanced Degree	Average Years Teaching Experience
<b>ALL SCHOOLS</b>		<b>11,548</b>	<b>11,103</b>	<b>6,715</b>	<b>4,464</b>	<b>12.5</b>
<b>Department Schools</b>		<b>11,198</b>	<b>10,775</b> 96%	<b>6,562</b> 59%	<b>4,305</b> 38%	<b>12.7</b>
<b>HONOLULU</b>	Farrington	507	97%	64%	40%	14.1
	Kaiser	223	99%	63%	40%	12.8
	Kalani	274	98%	62%	46%	13.8
	Kaimuki	275	97%	66%	40%	15.2
	McKinley	282	96%	60%	41%	12.5
	Roosevelt	367	96%	60%	37%	14.0
<b>CENTRAL</b>	Aiea	244	94%	55%	35%	12.6
	Moanalua	305	98%	59%	45%	12.8
	Radford	375	97%	64%	37%	13.5
	Leilehua	496	94%	59%	42%	12.9
	Mililani	470	99%	64%	41%	14.3
	Waialua	90	97%	56%	48%	13.1
<b>LEEWARD</b>	Campbell	675	94%	57%	35%	11.6
	Kapolei	425	98%	51%	35%	11.9
	Pearl City	395	98%	69%	33%	15.3
	Waipahu	536	97%	65%	37%	13.4
	Nanakuli Waianae	156 385	96% 91%	58% 57%	40% 32%	11.5 10.4
<b>WINDWARD</b>	Castle	347	98%	58%	34%	13.7
	Kahuku	232	97%	58%	34%	13.1
	Kailua	212	97%	66%	40%	14.0
	Kalaheo	244	96%	49%	40%	11.3
<b>HAWAII</b>	Hilo	306	98%	60%	36%	13.4
	Waiakea	245	100%	64%	41%	14.4
	Kau	69	99%	43%	41%	8.4
	Keaau	206	98%	63%	38%	13.2
	Pahoa	114	96%	58%	46%	10.3
	Honokaa	117	97%	47%	45%	10.5
	Kealakehe	287	91%	43%	40%	9.3
	Kohala Konawaena	62 225	89% 90%	40% 45%	45% 37%	8.6 9.5
<b>MAUI</b>	Baldwin	283	96%	57%	39%	13.0
	Kekaulike	298	96%	53%	38%	12.0
	Maui	476	96%	55%	36%	11.4
	Hana	29	86%	62%	38%	11.8
	Lahainaluna	223	93%	57%	39%	10.1
	Lanai	44	93%	55%	36%	10.0
	Molokai	74	93%	64%	43%	13.8
<b>KAUAI</b>	Kapaa	196	100%	57%	41%	13.2
	Kauai	250	99%	65%	39%	12.9
	Waimea	162	98%	54%	39%	12.5
<b>SPECIAL</b>						
Hawaii School for Deaf & Blind		17	82%	35%	76%	9.1
<b>Charter Schools</b>		<b>350</b>	<b>328</b> 94%	<b>153</b> 44%	<b>159</b> 45%	<b>8.6</b>

Source: Hawaii State Department of Education: Office of Strategy, Innovation and Performance; Assessment and Accountability Branch.

Table 22. SY2020-21 Wellness Indicators by Complex

	Number of Participating Schools	Percent of Participation	Schools with a Wellness Committee	All Food & Beverages Sold Met Compliance	Required Health Ed Classes Met Recommended Minutes	Required PE Classes Met Recommended Minutes	≥20 Minutes Recess Per Day	Average % of Wellness Guidelines Met
<b>STATE OVERALL</b>	<b>254</b>	<b>99%</b>	<b>76%</b>	<b>83%</b>	<b>76%</b>	<b>85%</b>	<b>85%</b>	<b>83%</b>
<b>Farrington-Kaiser-Kalani</b>	24	96%	79%	75%	100%	100%	92%	88%
Farrington	12	100%	75%	67%	100%	100%	100%	85%
Kaiser	5	83%	100%	60%	100%	100%	100%	92%
Kalani	7	100%	71%	100%	100%	100%	71%	89%
<b>Kaimuki-McKinley-Roosevelt</b>	27	96%	85%	89%	89%	96%	85%	88%
Kaimuki	10	100%	90%	90%	90%	90%	90%	88%
McKinley	8	100%	88%	88%	75%	100%	88%	89%
Roosevelt	9	90%	78%	89%	100%	100%	78%	87%
<b>Aiea-Moanalua-Radford</b>	22	100%	59%	100%	64%	91%	91%	82%
Aiea	7	100%	43%	100%	71%	86%	100%	78%
Moanalua	6	100%	67%	100%	83%	100%	67%	81%
Radford	9	100%	67%	100%	44%	89%	100%	85%
<b>Leilehua-Mililani-Waiialua</b>	20	100%	85%	70%	65%	60%	85%	83%
Leilehua	10	100%	90%	70%	80%	70%	80%	86%
Mililani	7	100%	86%	86%	57%	43%	86%	81%
Waiialua	3	100%	67%	33%	33%	67%	100%	76%
<b>Campbell-Kapolei</b>	18	100%	72%	78%	61%	72%	72%	79%
Campbell	10	100%	60%	80%	50%	60%	80%	79%
Kapolei	8	100%	88%	75%	75%	88%	63%	80%
<b>Pearl City-Waipahu</b>	17	100%	71%	94%	82%	94%	76%	84%
Pearl City	10	100%	70%	100%	80%	100%	80%	86%
Waipahu	7	100%	71%	86%	86%	86%	71%	81%
<b>Nanakuli-Waianae</b>	9	100%	78%	100%	78%	78%	89%	81%
Nanakuli	3	100%	100%	100%	100%	100%	100%	95%
Waianae	6	100%	67%	100%	67%	67%	83%	75%
<b>Castle-Kahuku</b>	16	100%	56%	69%	88%	100%	94%	79%
Castle	10	100%	60%	80%	90%	100%	100%	81%
Kahuku	6	100%	50%	50%	83%	100%	83%	76%
<b>Kailua-Kalaheo</b>	14	100%	100%	86%	93%	86%	93%	90%
Kailua	8	100%	100%	100%	100%	88%	100%	90%
Kalaheo	6	100%	100%	67%	83%	83%	83%	89%
<b>Hilo-Waiakea</b>	13	100%	85%	100%	54%	85%	77%	85%
Hilo	9	100%	78%	100%	44%	89%	89%	84%
Waiakea	4	100%	100%	100%	75%	75%	50%	88%
<b>Kau-Keaau-Pahoa</b>	9	100%	89%	67%	78%	78%	89%	87%
Kau	2	100%	50%	50%	100%	100%	100%	74%
Keaau	4	100%	100%	50%	100%	75%	75%	90%
Pahoa	3	100%	100%	100%	33%	67%	100%	90%
<b>Honokaa-Kealakehe-Kohala-Konawaena</b>	19	100%	63%	79%	58%	74%	79%	77%
Honokaa	4	100%	50%	75%	50%	50%	75%	74%
Kealakehe	5	100%	40%	80%	60%	80%	80%	70%
Kohala	3	100%	67%	67%	67%	100%	67%	79%
Konawaena	7	100%	86%	86%	57%	71%	86%	83%
<b>Baldwin-Kekaulike-Maui</b>	19	95%	74%	89%	79%	79%	89%	83%
Baldwin	5	100%	80%	80%	80%	80%	100%	85%
Kekaulike	6	86%	67%	100%	83%	83%	67%	80%
Maui	8	100%	75%	88%	75%	75%	100%	83%
<b>Hana-Lahainaluna-Lanai-Molokai</b>	11	100%	73%	82%	82%	100%	82%	82%
Hana	1	100%	0%	100%	0%	100%	100%	79%
Lahainaluna	4	100%	75%	100%	75%	100%	50%	81%
Lanai	1	100%	100%	100%	100%	100%	100%	91%
Molokai	5	100%	80%	60%	100%	100%	100%	82%
<b>Kapaa-Kauai-Waimea</b>	16	100%	81%	75%	63%	69%	88%	80%
Kapaa	5	100%	100%	80%	100%	100%	80%	90%
Kauai	5	100%	80%	40%	20%	40%	80%	73%
Waimea	6	100%	67%	100%	67%	67%	100%	77%

Note: Results reflect 254 of 257 eligible schools that completed the survey.

Source: Hawaii State Department of Health.

Table 23. Percent Meeting Standard on the Hawaii Statewide Assessment Program English Language Arts Assessments by Grade and Complex for SY2020-21

District	Complex	3	4	5	6	7	8	11	All Tested Grades
<b>ALL SCHOOLS</b>		43%	46%	51%	47%	52%	51%	64%	50%
<b>Department Schools</b>		43%	47%	51%	47%	52%	51%	65%	50%
<b>HONOLULU</b>	Farrington	28%	32%	43%	31%	37%	41%	57%	38%
	Kaiser	61%	66%	67%	66%	72%	69%	78%	68%
	Kalani	69%	69%	71%	75%	77%	75%	73%	73%
	Kaimuki	42%	48%	46%	47%	47%	45%	48%	46%
	McKinley	33%	33%	37%	22%	27%	20%	69%	38%
	Roosevelt	73%	73%	75%	51%	59%	57%	70%	66%
<b>CENTRAL</b>	Aiea	42%	53%	50%	44%	60%	53%	56%	51%
	Moanalua	58%	59%	63%	62%	76%	72%	72%	67%
	Radford	60%	59%	61%	66%	69%	66%	73%	64%
	Leilehua	41%	47%	54%	50%	55%	64%	58%	51%
	Mililani	56%	67%	72%	62%	67%	72%	72%	67%
	Waialua	63%	55%	61%	63%	65%	58%	61%	61%
<b>LEEWARD</b>	Campbell	41%	45%	50%	49%	46%	50%	67%	49%
	Kapolei	46%	50%	51%	44%	57%	55%	67%	52%
	Pearl City	57%	65%	68%	65%	63%	54%	66%	63%
	Waipahu	36%	36%	42%	36%	51%	46%	65%	43%
	Nanakuli	11%	14%	15%	34%	7%	11%	12%	16%
	Waianae	17%	19%	27%	26%	26%	25%	45%	25%
<b>WINDWARD</b>	Castle	46%	47%	50%	48%	47%	49%	68%	49%
	Kahuku	49%	52%	56%	53%	36%	49%	56%	51%
	Kailua	51%	53%	53%	49%	37%	16%	76%	51%
	Kalaheo	55%	57%	61%	60%	71%	68%	81%	64%
<b>HAWAII</b>	Hilo	33%	35%	44%	44%	48%	42%	74%	41%
	Waiakea	34%	50%	53%	44%	44%	47%	75%	49%
	Kau	22%	12%	29%	20%	25%	18%	41%	24%
	Keaau	19%	23%	29%	21%	31%	37%	47%	30%
	Pahoa	16%	23%	30%	24%	38%	40%	49%	30%
	Honokaa	29%	36%	31%	47%	40%	36%	66%	38%
	Kealakehe	21%	28%	35%	32%	36%	27%	64%	33%
	Kohala	33%	29%	58%	30%	41%	33%	57%	40%
Konawaena	27%	36%	39%	40%	48%	47%	62%	42%	
<b>MAUI</b>	Baldwin	39%	43%	46%	36%	39%	49%	58%	44%
	Kekaulike	41%	39%	56%	38%	37%	43%	63%	44%
	Maui	39%	45%	47%	39%	52%	54%	80%	46%
	Hana	23%	23%	20%	25%	46%	33%	41%	31%
	Lahainaluna	30%	40%	52%	43%	37%	46%	57%	43%
	Lanai	18%	40%	39%	35%	37%	16%	58%	34%
	Molokai	23%	30%	29%	26%	37%	43%	28%	32%
<b>KAUAI</b>	Kapaa	42%	40%	39%	40%	46%	35%	60%	42%
	Kauai	49%	55%	57%	50%	59%	47%	64%	54%
	Waimea	45%	40%	40%	27%	35%	28%	51%	38%
<b>SPECIAL</b>									
Hawaii School for Deaf & Blind		n/a	n/a	n/a	n/a	n/a	n/a	n/a	n/a
<b>Charter Schools</b>		43%	42%	49%	46%	53%	54%	62%	49%

Note: Achievement rates are based on **all students** who were administered the SBA or HSA-Alt.

n/a = Data not reported to maintain student confidentiality (FERPA).

Source: Hawaii State Department of Education: Office of Strategy, Innovation and Performance; Data Governance and Analysis Branch.



Table 24. Percent Meeting Standard on the Hawaii Statewide Assessment Program  
Mathematics Assessments by Grade and Complex for SY2020-21

District	Complex	3	4	5	6	7	8	11	All Tested Grades
<b>ALL SCHOOLS</b>		41%	36%	32%	29%	29%	25%	28%	32%
<b>Department Schools</b>		41%	36%	32%	29%	29%	25%	28%	32%
<b>HONOLULU</b>	Farrington	26%	23%	25%	15%	17%	18%	17%	20%
	Kaiser	65%	53%	52%	47%	42%	40%	46%	50%
	Kalani	70%	64%	57%	63%	61%	61%	38%	59%
	Kaimuki	40%	41%	36%	33%	30%	30%	10%	34%
	McKinley	30%	26%	23%	14%	6%	4%	28%	23%
	Roosevelt	76%	66%	68%	29%	32%	28%	39%	49%
<b>CENTRAL</b>	Aiea	43%	42%	31%	29%	48%	36%	21%	36%
	Moanalua	52%	54%	44%	44%	50%	44%	31%	44%
	Radford	59%	51%	42%	52%	42%	33%	30%	45%
	Leilehua	39%	38%	33%	29%	32%	30%	24%	33%
	Mililani	57%	59%	57%	38%	46%	35%	42%	48%
	Waialua	66%	57%	44%	58%	45%	22%	20%	45%
<b>LEEWARD</b>	Campbell	34%	29%	25%	28%	25%	25%	26%	28%
	Kapolei	35%	41%	31%	19%	34%	27%	30%	32%
	Pearl City	57%	58%	53%	51%	36%	30%	34%	47%
	Waipahu	33%	24%	19%	24%	27%	21%	30%	25%
	Nanakuli	9%	7%	5%	26%	4%	n/a	4%	9%
	Waianae	18%	10%	9%	12%	10%	5%	14%	11%
<b>WINDWARD</b>	Castle	38%	35%	25%	31%	28%	19%	13%	29%
	Kahuku	52%	47%	44%	43%	21%	30%	16%	43%
	Kailua	53%	44%	36%	36%	12%	3%	34%	39%
	Kalaheo	57%	49%	36%	38%	39%	29%	28%	40%
<b>HAWAII</b>	Hilo	30%	27%	19%	28%	27%	23%	29%	26%
	Waiakea	29%	29%	30%	25%	26%	21%	34%	27%
	Kau	24%	4%	7%	3%	7%	3%	10%	8%
	Keaau	14%	15%	12%	10%	15%	7%	17%	13%
	Pahoa	9%	9%	9%	13%	20%	17%	16%	12%
	Honokaa	25%	20%	13%	25%	16%	11%	24%	19%
	Kealakehe	21%	11%	10%	19%	19%	10%	28%	16%
	Kohala	35%	20%	30%	11%	17%	9%	24%	21%
Konawaena	24%	23%	20%	13%	23%	18%	28%	21%	
<b>MAUI</b>	Baldwin	28%	27%	21%	16%	17%	17%	30%	22%
	Kekaulike	45%	29%	34%	15%	14%	22%	27%	28%
	Maui	36%	32%	28%	19%	29%	23%	20%	28%
	Hana	15%	8%	13%	3%	27%	21%	23%	16%
	Lahainaluna	35%	25%	33%	20%	20%	17%	14%	23%
	Lanai	25%	27%	16%	16%	10%	3%	5%	15%
	Molokai	22%	14%	11%	10%	19%	15%	4%	14%
<b>KAUAI</b>	Kapaa	41%	34%	23%	23%	20%	15%	20%	26%
	Kauai	51%	42%	42%	35%	32%	21%	33%	36%
	Waimea	44%	30%	27%	15%	8%	11%	15%	23%
<b>SPECIAL</b>									
Hawaii School for Deaf & Blind		n/a	n/a	n/a	n/a	n/a	n/a	n/a	n/a
<b>Charter Schools</b>		37%	33%	27%	25%	28%	24%	25%	28%

Note: Achievement rates are based on **all students** who were administered the SBA or HSA-Alt.

n/a = Data not reported to maintain student confidentiality (FERPA).

Source: Hawaii State Department of Education: Office of Strategy, Innovation and Performance; Data Governance and Analysis Branch.

Table 25. Percent Meeting Standard on the Hawaii Statewide Assessment Program Science Assessments by Grade and Complex for SY2020-21

District	Complex	5	8	HS	All Tested Grades
<b>ALL SCHOOLS</b>		37%	33%	34%	35%
<b>Department Schools</b>		37%	33%	34%	35%
<b>HONOLULU</b>	Farrington	28%	25%	27%	27%
	Kaiser	61%	47%	42%	50%
	Kalani	60%	59%	46%	55%
	Kaimuki	37%	24%	11%	28%
	McKinley	28%	8%	32%	26%
	Roosevelt	66%	41%	38%	49%
<b>CENTRAL</b>	Aiea	37%	46%	25%	37%
	Moanalua	47%	53%	37%	45%
	Radford	54%	41%	43%	47%
	Leilehua	37%	46%	30%	38%
	Mililani	58%	53%	46%	52%
	Waialua	34%	27%	40%	33%
<b>LEeward</b>	Campbell	34%	33%	34%	34%
	Kapolei	34%	33%	32%	33%
	Pearl City	48%	33%	31%	39%
	Waipahu	23%	27%	35%	28%
	Nanakuli	10%	3%	n/a	8%
	Waianae	14%	10%	14%	13%
<b>WINDWARD</b>	Castle	38%	27%	32%	33%
	Kahuku	44%	n/a	57%	46%
	Kailua	44%	9%	39%	37%
	Kalaheo	46%	42%	50%	45%
<b>HAWAII</b>	Hilo	30%	25%	34%	30%
	Waiakea	32%	24%	59%	34%
	Kau	13%	6%	18%	11%
	Keaau	20%	17%	29%	22%
	Pahoa	21%	17%	15%	18%
	Honokaa	18%	21%	18%	19%
	Kealakehe	23%	19%	31%	22%
	Kohala	20%	32%	27%	27%
	Konawaena	26%	29%	30%	28%
<b>MAUI</b>	Baldwin	25%	26%	29%	27%
	Kekaulike	37%	24%	32%	31%
	Maui	33%	34%	86%	34%
	Hana	13%	22%	33%	22%
	Lahainaluna	28%	24%	n/a	26%
	Lanai	19%	9%	18%	15%
	Molokai	13%	25%	7%	16%
<b>KAUAI</b>	Kapaa	32%	19%	16%	25%
	Kauai	44%	31%	26%	34%
	Waimea	23%	17%	20%	20%
<b>SPECIAL</b>					
	Hawaii School for Deaf & Blind	n/a	n/a	n/a	n/a
<b>Charter Schools</b>		37%	39%	37%	38%

Note: Achievement rates are based on **all students tested** who were administered either the HSA Science, HSA-Alt, or the Biology I End-of-Course Exam. The achievement rates for high school students are based on students who were administered either the Biology I End-of-Course Exam or the HSA-Alt for grade 11.  
n/a = Data not reported to maintain student confidentiality (FERPA).

Source: Hawaii State Department of Education: Office of Strategy, Innovation and Performance; Data Governance and Analysis Branch.

## Appendix A. Glossary

This glossary explains the educational and fiscal terms and measures contained in the Data Book. An “n/a” indicates data are “not appropriate” or “not reportable.” A “--” indicates data are missing or unavailable. Due to rounding of percentages, there may be slight differences among published reports (for example, 9.6% may be reported as 10% for the same measure in different reports).

**Administrators, School:** This is a Full-Time Equivalent (FTE) count of all principals and vice-principals.

**Administrators, State and Complex Area:** This is an FTE count of the positions responsible for the administrative support of programs, curriculum, and state or federal legal requirements at the complex area and state levels. Examples of FTE positions include complex areas superintendents, evaluation specialists, facilities planners, personnel specialists, test development specialists, budget specialists, information (data) specialists, state and district curriculum/educational specialists, and safety/security program specialists.

**Advanced Placement:** A program in the United States created by the College Board which offers college-level curricula and examinations to high school students. American colleges and universities may grant placement and course credit to students who obtain high scores on the examinations.

**Appropriated Funds:** Funds determined by the state legislature and enacted by the governor to provide basic support for the Hawaii State Department of Education to operate a statewide school district. Appropriated Funds include Executive Budget Bill appropriations for the Department and Charter schools plus actual expenditures made by Department of Budget and Finance (B&F) for both Department and Charter schools employer’s share of the cost of the employees’ retirement system and health insurance costs and related debt service. Beginning in FY 2009-10, appropriations for DOE related retirement benefit payments, health premium payments, and debt service payments were transferred to B&F. These amounts have continued to be included in the Appropriated Funds on this report for comparability and to present the total cost of public education.

**Attendance Rate:** The percentage of the official student enrollment attending school every day during the school year. For example, 95% means that on any given day during the given school year, an average of 95% of the students are present in school.

**Average Years Teaching Experience:** This is a simple average of the number of years of approved teaching experience within the Hawaii Department of Education.

**Charter Schools:** Charter schools are public schools operated and managed by independent governing boards. They operate under a performance contract with the State Public Charter School Commission, the statewide charter school authorizer. The Commission approves quality applications for new charter schools, monitors the performance and legal compliance of existing charter schools, and is responsible to the Board of Education.

**Classroom Teachers, FTE or Headcount:** An FTE Classroom Teacher count is a position count of all teachers who are directly teaching students. Unlike FTE, “Headcount” is a simple count of the number of teachers who are directly teaching students. Thus, 1.5 FTE teachers may have a headcount of two (one 1.0 FTE and one 0.5 FTE) or three (three teachers in 0.5 FTE positions).

**Community Eligibility Provision (CEP):** Is a non-pricing meal service option for schools and school districts in low-income areas. CEP allows the nation’s highest poverty schools and districts to serve breakfast and lunch at no cost to all enrolled students without collecting household applications. For additional information visit the U.S. Department of Agriculture Food and Nutrition Service website: <https://www.fns.usda.gov/cn/community-eligibility-provision>.

**Complex:** This is a smaller division within a Complex Area consisting of a high school and the middle/intermediate and elementary schools within its attendance boundary.

**Complex Area:** This is an administrative unit made up of two or more complexes.

**Demographics, State:** Figures reported by the U.S. Census Bureau for years other than decennial 10-year censuses are estimates and are updated periodically. Such estimates in this report are from the American Community Survey. For an explanation of terms, definitions, and criteria used for classification, please visit the U.S. government website for the census: <https://www.census.gov/>.

**Dropout Rate:** This four-year dropout rate is the percentage of high school students who have not returned to school and have either officially exited as “drop-outs”, have school enrollment statuses that are undetermined, or have not graduated within four years.

**Economically Disadvantaged:** These are students whose families meet the income qualifications for the federal free/reduced-cost lunch program. This is an indicator of school-community poverty.

**English Learners (EL):** Students certified as receiving English-as-a-second-language services.

**Enrollment Count, Official:** The official enrollment count of each school is reported to the state upon the yearly opening of school. A school's enrollment may fluctuate over the course of the school year; thus, a school's enrollment count taken mid-year may be different from its official enrollment count.

**Federal Funds:** Funds provided by the federal government for use by the state public school system through grants from various federal agencies, such as the U.S. Department of Education (ED), U.S. Department of Defense, and U.S. Department of Agriculture.

**Five or More Years at Same School:** Percentage of teachers who have taught at one school for five or more years. It is an indicator of school staffing stability. Schools with higher levels of stability are considered most successful in implementing and sustaining school improvement efforts.

**Fully Licensed:** Teachers who meet the requirements (e.g., earned at least a bachelor's degree and completed an approved teacher training program) to be fully licensed by the Hawaii State Teachers Standards Board.

**Full-Time Equivalent (FTE):** These are position counts and are the sum of full- and part-time positions. Note that partial counts are possible. For example, one full-time (1.0 FTE) and one half-time (0.5 FTE) would count as 1.5 FTEs.

**General Funds:** The primary source of funding for the state public school system provided by the state through taxpayer revenues.

**Graduation, Graduation Rate, Graduate On Time, Four-Year Graduation:** Count or percentage of all high school students, including charter school students, who had completed high school within four years of their 9th-grade entry date. Special Education students receiving certificates of completion and students taking more than four years to complete high school are not included. For more information on the Adjusted Cohort Graduation Rate methodology, see the ESSA Graduation Rate Guidance on the ED website: <https://www2.ed.gov/policy/elsec/leg/essa/essagraterateguidance.pdf>.

**Hawaii State Alternate (HSA-Alt) Assessment:** The HSA-Alt in English Language Arts, Mathematics and Science are administered to students to promote, improve access to, and measure the attainment of standards for students with significant cognitive disabilities.

**Honors Recognition Certificates:** Honors Recognition Certificates will be awarded to students who meet the requirements for the Hawaii High School Diploma, attain a cumulative grade point average of 3.0 or above, and earn the required credits for Academic, CTE, or STEM Honors. Students are able to earn a certificate for each honors distinction. For more information on the graduation requirements and the Honors Recognition Certificate requirements visit the Hawaii Department of Education (HIDOE) website: <http://www.hawaiipublicschools.org/TeachingAndLearning/StudentLearning/GraduationRequirements/Pages/Requirements.aspx>.

**Kaipuni Assessment of Education Outcomes (KAEO):** Assessments administered in the Hawaiian language to Hawaiian language immersion students in Language Arts, Mathematics, and Science.

**National Assessment of Educational Progress (NAEP):** A congressionally-mandated project administered by the ED's National Center for Education Statistics (NCES). The NAEP program consists of assessments in a variety of subject areas (e.g., Civics, U.S. History, and Science), and the Every Student Succeeds Act (ESSA) requires districts that receive Title I funding to participate in the NAEP mathematics and reading assessments for grades 4 and 8. NAEP is the only assessment that serves as a common measure of student achievement across the country, providing valuable data on student performance in comparison to other states and long-term trends in student performance within and across key demographic groups. NAEP results have been an important metric to analyze the impact of systemic and school-level efforts on student achievement for nearly the past 30 years. The metrics that NAEP uses include average scale scores and the percentages of students achieving NAEP Advanced, NAEP Proficient, NAEP Basic, and NAEP Below Basic. Advanced and Proficient denote mastery of challenging subject matter, including success on some items that are above the grade level of the students being tested. NAEP defines Basic as denoting partial mastery of prerequisite knowledge and skills that are fundamental for proficient work at each grade assessed. Below Basic means performance below the grade level being tested.

**Next Generation Science Standards (NGSS):** The Hawaii Board of Education adopted the Next Generation Science Standards (NGSS) to replace the Hawaii Content and Performance Standards III (HCPS III) for Science in 2016. Full implementation took place in SY2019-20. Due to COVID-19 there was a waiver for statewide assessments in SY2019-20 and, as a result, the first administration for NGSS-based science assessments was SY2020-21. Results from the NGSS-based assessments administered in SY2020-21 are not comparable to the results of HCPS III Science Assessments given newly adopted standards and test items. The results of SY2020-21 tests will serve as a new baseline for student performance and growth.

**Not Suspended, Students:** The number of students who are not suspended by the school and an indicator of appropriate student behavior at school.

**Others:** Percentage of high school completers who received a special education certificate of completion in lieu of a diploma and students who are still attending school and did not graduate in the four-year time frame. These students are not included in the "Dropout" count or in the "Graduation On-time" count.

**Perceptions of Safety and Well-Being, Student and Teacher:** Positive responses ("Completely Agree", "Strongly Agree" and "Agree") to a set of items on the Hawaii State Department of Education's annual School Quality Survey (SQS) regarding school safety and well-being. The percentage of responses that are positive is reported.

**Per-Pupil Expenditure:** The numbers reported by the National Center of Education Statistics (NCES) may be used for state-to-state comparisons. Numbers are based on membership and can be expected to be smaller than per-pupil expenditures based on average daily attendance. Current expenditure for public elementary and secondary education in a state is divided by the student membership. Current expenditures are funds spent for the operation of local public schools and local education agencies, including such operating expenses as salaries for school personnel, student transportation, school books and materials, and energy costs, but excluding capital outlay and interest on school debt.

**Private Schools:** Privately-operated schools not under the direction of the Hawaii State Department of Education.

**Retention Rates for Elementary:** Percentage of students, excluding kindergartners, who are not promoted to the next grade level. A low retention rate is desired.

**Retention Rates for Middle & Intermediate:** Percentage of 8th grade students who are not promoted to 9th grade the following year. A low retention rate is desired.

**Schools, Total:** The total number is the sum of all public schools. All Department, Charter, and special schools are in this count. The Community Schools for Adults are not included.

**Section 504:** Regulation requiring schools to provide a “free appropriate public education” (FAPE) to each qualified student with a disability who is in the school district’s jurisdiction regardless of the nature or severity of that disability.

**Smarter Balanced Assessment (SBA):** These tests of the Hawaii Statewide Assessment Program (HSAP) measure student achievement in English Language Arts and Mathematics based on Hawaii Department of Education content standards. The percentages shown are assessment results. “*Percent Meeting Standard*” is derived from test results that meet or exceed the achievement standard (i.e., achievement cut-score).

**Special Education (SPED):** This count and percentage contain all special education students listed on the official enrollment report as receiving special education services.

**Special Funds:** Funds generated through revenue sources other than state taxpayer revenues, such as cafeteria collections from students, adult education tuition/fees, summer school tuition, driver education fees, facility rental fees, and lost textbook penalty fees.

**Special Needs, Multiple:** Students identified and/or qualified as special needs under more than one of the following categories: economically disadvantaged as determined by receiving free/reduced-cost lunch, Section 504 classification, and certified as receiving special education or English Language Learner services.

**State and Local Expenditures Supporting Public Education, Percent:** This percentage is published in the annual ED National Center of Education Statistics (NCES) *Digest of Educational Statistics* publication. The percentage is calculated by dividing the states’ “Total, all general expenditures per capita” by the states’ “Elementary and secondary education expenditures per capita.” The “Total, all general expenditures per capita” includes state and local government expenditures for education services, social services, and income maintenance, transportation, public safety, environment and housing, governmental administration, interest on general debt, and other general expenditures, including intergovernmental expenditure to the federal government, as reported by the state’s NCES Common Core of Data Financial Survey.

**Support Staff, Other:** This is an FTE count that encompasses a wide range of positions that support schools. This category may include, but is not limited to, school assessment liaisons, athletic directors, registrars, state and district resource teachers, school psychologists, custodians, cafeteria workers, school secretaries, school security guards, educational assistants, occupational therapists, mental health assistants, behavioral specialists, and student service coordinators. Note that the assignment of positions to categories is based on ED National Center for Education Statistics Common Core of Data Non-Fiscal Survey requirements.

**Trust Funds:** Funds segregated for specific purposes, such as foundation grants and athletic gate receipts.

**Wellness:** Student wellness is affected by nutrition education, the food served in schools, and the amount of physical activity students engage in. The Department of Education also recognizes that when students’ wellness needs are met, they attain higher achievement levels.



# Appendix B. References and Resources

## Educational and Accountability Reports

### **Accountability Resource Center Hawaii**

This is a web portal for educational accountability information. It complements the many federally- and state-required accountability reports at the school, complex, complex area, and state levels that are available as static documents. Visit the HIDOE's ARCH (Accountability Resource Center Hawaii) website: <http://arch.k12.hi.us>.

### **Enrollment**

These reports have student enrollment figures by districts, state, and grade-level groups and are available on the HIDOE School Reports page:

<http://www.hawaiipublicschools.org/VisionForSuccess/SchoolDataAndReports/SchoolReports/Pages/home.aspx>.

### **National Assessment of Educational Progress (NAEP)**

The NAEP website has a variety of information available to educators and the general public. The NAEP Data Explorer (<https://www.nationsreportcard.gov/ndecore/landing>) is a useful tool to access data on student performance at the national and state level, which can also be disaggregated by key demographic groups. The website also provides access to a Questions Tool (containing numerous released items from the NAEP assessments) and a Take NAEP Now tool that teachers may use as a sample assessment in their classroom. Any questions regarding the NAEP assessments or the resources on the NAEP website may contact NAEP State Coordinator Dewey Gottlieb, at [dewey.gottlieb@k12.hi.us](mailto:dewey.gottlieb@k12.hi.us) or (808) 307-3636. Visit the NAEP website: <https://nationsreportcard.gov>.

### **School Quality Survey (SQS)**

The survey gathers student, parent, and school staff perceptions that are useful for school improvement and planning efforts. The SQS also provides information about parent involvement and parent and student satisfaction with their schools. SQS reports are available on the ARCH website:

<http://arch.k12.hi.us/reports/sqs>.

### **School Status and Improvement Report (SSIR)**

Each SSIR has a description of the school and its setting, a summary of progress in implementing Hawaii Department of Education standards, and information on school resources and educational outcomes.

SSIR reports are available on the ARCH website: <http://arch.k12.hi.us/reports/ssir>.

### **Strive HI**

The current school accountability and improvement system is designed to meet the needs of Hawaii's students, educators, and schools. It aligns and connects our key state education policies and initiatives to position students and educators for success. For more information, visit the ARCH website

(<http://arch.k12.hi.us>) or the HIDOE Strive HI Performance System page

(<http://www.hawaiipublicschools.org/VisionForSuccess/AdvancingEducation/StriveHIPerformanceSystem/Pages/home.aspx>).

### **Trend Report: Educational & Fiscal Accountability**

This annual report contains three years of trend data on schools, school complexes, and the Hawaii State Department of Education at selected benchmark grade levels with performance indicators in areas relating to student achievement, safety and well-being, and civic responsibility. These reports are designed to present trend data information to the public in a concise format for each complex and school as well as for the state. Trend reports are available on the ARCH website: <http://arch.k12.hi.us/reports/trend-report>.

## **Financial Reports**

### **Allocations by School Program**

These annual reports contain dollar amounts allocated by Allocation Number, Program, or Organization and can be found on the HIDOE Budget page:

<https://www.hawaiipublicschools.org/ConnectWithUs/Organization/Budget/Pages/allocations.aspx>.

### **Annual Financial Reports**

This Annual Financial Report is prepared each year to inform interested persons of the total cost of public education in the State of Hawaii. The reports provide both Operating and Capital Improvement Project fund information that is useful in presenting our educational system's financing, expenditures, and per-pupil information. This report can be found on the HIDOE State Reports page:

<http://www.hawaiipublicschools.org/VisionForSuccess/SchoolDataAndReports/StateReports/Pages/home.aspx>.

### **Audit**

The annual report on the financial audit of the Hawaii State Department of Education forms an opinion on the fairness of the presentation of its financial statements to comply with requirements for state and local governments that receive federal financial assistance. This report can be found on the HIDOE State Reports page:

<http://www.hawaiipublicschools.org/VisionForSuccess/SchoolDataAndReports/StateReports/Pages/home.aspx>.

### **Budget**

These reports have fiscal information on budget restrictions, operating budget allocations (initial and supplemental), emergency appropriations, and biennium budgets and can be found on the HIDOE Budget page: <http://www.hawaiipublicschools.org/ConnectWithUs/Organization/Budget/Pages/home.aspx>.

## **Special Education Reports**

### **Annual Performance Report & State Performance Plan**

These documents are the state's plans and reports in accordance with the Individuals with Disabilities Education Improvement Act of 2004. Included are evaluations of the state's efforts and plans for improving implementation. For more information, visit the HIDOE Special Education Performance Report page:

<http://www.hawaiipublicschools.org/VisionForSuccess/SchoolDataAndReports/StateReports/Pages/Special-Education-Performance-Report.aspx>.

### **Due Process Hearing Redacted Decisions**

The due process hearing redacted decisions are provided for public information. For more information, visit the HIDOE Special Education Performance Report page:

<http://www.hawaiipublicschools.org/VisionForSuccess/SchoolDataAndReports/StateReports/Pages/Special-Education-Performance-Report.aspx>.

## Other Resources

### **Center on the Family**

This resource provides access to research reports, informational articles, videos, brochures, and other materials designed to support and strengthen families in Hawaii. The Center on the Family at the University of Hawaii-Manoa (UH-Manoa) also issues an annual report on a core set of indicators reflecting overall well-being of Hawaii families. For more information, visit the UH-Manoa Center on the Family website: <http://uhfamily.hawaii.edu>.

### **Hawaii P-3**

An initiative by Hawaii P-20 to increase children's social-emotional and cognitive development toward the end goal of reading at grade level by third grade. For more information, visit the Hawaii P-3 website: <https://www.hawaiip20.org/p-20-initiatives/early-childhood/>.

### **Hawaii P-20 Partnerships for Education**

A statewide partnership led by the Good Beginnings Alliance, the Hawaii State Department of Education, and the University of Hawaii System to strengthen early childhood through post-secondary education so that all students achieve career and college success. Annual College and Career Readiness reports are available on its website. For more information, visit the Hawaii P-20 website: <https://www.hawaiip20.org/>.

### **State Public Charter School Commission**

The State Public Charter School Commission (SPCSC or Commission) is the statewide charter school authorizer whose mission is to authorize high-quality public charter schools throughout Hawaii. The Commission approves quality applications for new charter schools and monitors the performance and legal compliance of existing charter schools. Charter schools are public schools operated and managed by independent governing boards that are responsible for the schools' financial, organizational, and academic viability. Although they are funded on a "per-pupil" basis separately from Department of Education-operated schools, charter schools are open-enrollment public schools that serve all students and do not charge tuition. Annual reports are available on its website: <http://www.chartercommission.hawaii.gov>.

# Appendix C. Supplemental Data Tables

Data tables are available online at <http://arch.k12.hi.us/reports/hidoe-data-book>.

Table 1. Enrollment in Hawaii Public and Private Schools.....	1
Table 2. Enrollment by Complex Area.....	2
Table 3. Enrollment of Students with Special Needs .....	3
Table 4. Special Needs Affecting Public School Students in Hawaii.....	4
Table 5. Average Daily Attendance Rates by School Type.....	5
Table 6. Four-Year Graduation and Dropout Rates.....	6
Table 7. Ethnicity of Students and Teachers .....	7
Table 8. Hawaii Statewide Assessment Program Results .....	8
Table 9. Chapter 19 Suspensions Categorized by Type of Incident .....	9
Table 10. Administrative Staff as Proportion of Total Staff: Hawaii and Comparison States .....	10
Table 11. Expenditure Per Pupil: Hawaii and Comparison States .....	11
Table 12. Hawaii and States with Similar Financial Resources .....	12
Table 13. Percent of State and Local Expenditures Supporting Public Education: Hawaii and Comparison States .....	13
Table 14. Percent of State and Local Expenditures Supporting Public Education and Per-Pupil Expenditures: All States.....	14