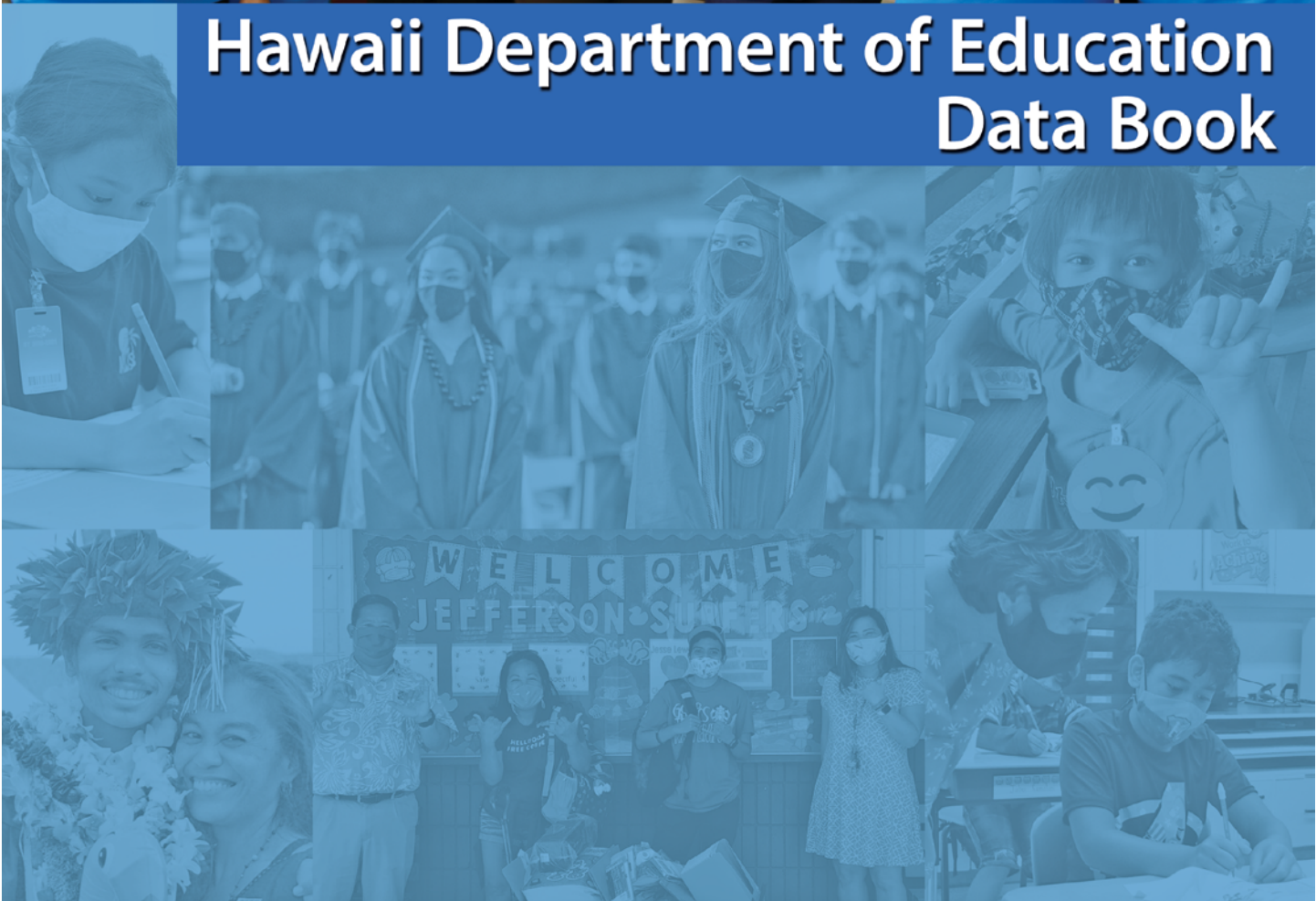




2020

Hawaii Department of Education Data Book





**The Honorable David Y. Ige
Governor, State of Hawaii**

BOARD OF EDUCATION

Catherine Payne, Chairperson
Kenneth Uemura, Vice Chairperson

Bill Arakaki Christine Namau'u
Shanty Asher Dwight Takeno
Kaimana Barcarse Bruce Voss
Lynn Fallin Colonel Angenene L. Robertson (Military Liaison)
Hunter Harris (Student Representative)

DEPARTMENT OF EDUCATION

Dr. Christina M. Kishimoto, Superintendent of Education

Phyllis Unebasami, Deputy Superintendent

Heidi Armstrong, Assistant Superintendent
Office of Student Support Services

Sean Bacon, Interim Assistant Superintendent
Office of Talent Management

Brook Conner, Assistant Superintendent & Chief Information Officer
Office of Information Technology Services

Brian Hallett, Assistant Superintendent & Chief Financial Officer
Office of Fiscal Services

Randall Tanaka, Assistant Superintendent
Office of Facilities and Operations

Cara Tanimura, Interim Assistant Superintendent
Office of Strategy, Innovation and Performance

Teri Ushijima, Interim Assistant Superintendent
Office of Curriculum and Instructional Design

Rochelle Mahoe, Ph.D.
Farrington-Kaiser-Kalani Complex Area Superintendent
Linell Dilwith
Kaimuki-McKinley-Roosevelt Complex Area Superintendent
John Erickson
Aiea-Moanalua-Radford Complex Area Superintendent
Robert Davis
Leilehua-Mililani-Waialua Complex Area Superintendent
Sean Tajima
Campbell-Kapolei Complex Area Superintendent
Disa Hauge
Interim Nanakuli-Waianae Complex Area Superintendent
Keith Hui
Pearl City-Waipahu Complex Area Superintendent

Ed Noh, Ed.D.
Interim Castle-Kahuku Complex Area Superintendent
Lanelle Hibbs
Kailua-Kalaheo Complex Area Superintendent
Chad Keone Farias
Kau-Keaau-Pahoa Complex Area Superintendent
Esther Kanehailua
Hilo-Waiakea Complex Area Superintendent
Janette Snelling
Honokaa-Kealakehe-Kohala-Konawaena Complex Area Superintendent
Kathleen Dimino, Ph.D.
Baldwin-Kekaulike-Maui Complex Area Superintendent
Rebecca Winkie
Hana-Lahainaluna-Lanai-Molokai Complex Area Superintendent

Paul Zina
Kapaa-Kauai-Waimea Complex Area Superintendent

Contents

Data Insights	1
Students & Schools.....	1
Progress & Outcomes.....	1
Resources & Support.....	1
At-A-Glance	2
Table 1. Official Fall Enrollment for Grades K to 12, Public and Private Schools.....	2
Figure 1. Percent of Public School Students With Special Needs, Unduplicated Count.....	2
Table 2. Department of Education Teacher Credentials.....	2
Table 3. Funding By Source and Year (In Millions).....	3
Table 4. Safety and Well-Being.....	3
Table 5. Hawaii Statewide Assessment Program, Percent Meeting Standard	3
Table 6. Hawaii Statewide Assessment Program, Percent in Each Standard Level.....	4
Figure 2. Hawaii Statewide Assessment Program, Percent Meeting Standard in Language Arts.....	5
Figure 3. Hawaii Statewide Assessment Program, Percent Meeting Standard in Mathematics.....	5
Figure 4. Hawaii Statewide Assessment Program, Percent Proficient in Science.....	5
Table 7. Four-Year Graduation and Dropout Rates	6
Table 8. High School Diplomas	6
Table 9. Honors Recognition Certificates.....	6
Table 10. Advanced Placement (AP) Program.....	6
Profiles and Trends	7
Table 11. Number of Public Schools (and Percentage of Total Schools by Type).....	7
Table 12. Student Enrollment.....	7
Table 13. Progress and Completion	7
Table 14. Staff, Full-Time Equivalent Positions.....	8
Table 15. State Demographics	8

School Finance	9
Table 16. State School Budget	9
Table 17. Key Finance Indicators	9
Figure 5. Percentage of State & Local Expenditures per Capita Supporting Public Schools.....	10
Educational Assessments	10
Table 18. National Assessment of Educational Progress (NAEP)	10
Figure 6. National Assessment of Educational Progress (NAEP), Percent Proficient & Advanced in Grade 4 Reading and Mathematics	11
Figure 7. National Assessment of Educational Progress (NAEP), Percent Proficient & Advanced in Grade 8 Reading and Mathematics	11
Table 19. Hawaii Statewide Assessment Program, Percent Meeting Standard	12
Table 20. Students by Complex in SY2019-20	13
Table 21. Teachers by Complex in SY2019-20	14
Table 22. SY2019-20 Wellness Indicators by Complex.....	15
Table 23. Percent Meeting Standard on the Hawaii Statewide Assessment Program English Language Arts Assessments by Grade and Complex for SY2018-19	16
Table 24. Percent Meeting Standard on the Hawaii Statewide Assessment Program Mathematics Assessments by Grade and Complex for SY2018-19	17
Table 25. Percent Meets and Exceeds Proficiency on the Hawaii Statewide Assessment Program Science Assessments by Grade and Complex for SY2018-19	18
Appendices	19
Appendix A. Glossary.....	19
Appendix B. References and Resources	23
Appendix C. Supplemental Data Tables.....	26

Data Insights

Due to the COVID-19 pandemic, Hawaii public schools were closed to in-person instruction on March 16, 2020, and remained closed for the rest of the 2019-20 school year. In the fourth quarter, students moved from traditional in-person instruction to enrichment and distance learning. Standardized testing requirements were waived and graduation requirements were modified. These factors may have affected data in the 2019-20 school year such as graduation rates, Chapter 19 suspensions, and the number of Advanced Placement (AP) exams taken.

Students & Schools

The data highlighted below are for School Year (SY) 2019-20:

- Public school enrollment was 179,331 (Table 1, page 2).
- Charter school enrollment increased by 331 students, while department school enrollment decreased by 698 students (Table 1, page 2).

The data highlighted below are for SY2017-18 to SY2019-20, unless noted:

- English Language Learner students increased by 2,246 or 15% (Table 12, page 7).
- Economically Disadvantaged students decreased by 2,660 or 3% (Table 12, page 7).
- Fifty-four percent of public school students were identified as economically disadvantaged, special education, multiple special needs, Section 504, and/or English Language Learners. This percentage did not change from the prior year (Figure 1, page 2).
- The percentage of dropouts improved from 12.6% to 10.8%, and the graduation rate rose from 84.4% to 86.2% (Table 7, page 6; Table 13, page 7).

Progress & Outcomes

Hawaii State Assessment Program (HSAP)

- Due to the COVID-19 pandemic and subsequent ED waiver from testing, there are no assessment results for SY2019-20. The most recent HSAP results may be found on Table 5, page 3. Grade level achievement may be found on Table 6, page 4.

National Assessment of Educational Progress (NAEP)

- The NAEP assessment is normally administered every two years (odd years). The most recent NAEP results may be found on Table 18, page 10. In response to the COVID-19 pandemic, the National Center for Education Statistics has postponed the next test administration to 2022.

Other

- The number of students who took at least one Advanced Placement (AP) exam decreased from the prior year by 15.2% to 5,921. The number of exams taken decreased by 15.3% to 9,115. The percentage of exams passed increased 7 points to 51% (Table 10, page 6).
- Student perception of safety declined: Elementary declined 3 points to 68%, Middle declined 5 points to 59%, and High School declined 5 points to 59%. Teachers' perception of safety declined 2 points to 72% (Table 4, page 3).

Resources & Support

- Hawaii's per-pupil expenditure increased by 6.4% to \$15,242 for the 2017-18 school year (most current available information) (Table 17, page 9).
- Hawaii ranked 50th (last) in the nation when comparing the percent of state and local expenditures for public education per capita (Table 17, page 9).

At-A-Glance

Note: Unless otherwise noted, data are about “public schools” and represents both Department and Charter schools; percentages with one decimal place have been truncated at the first decimal place.

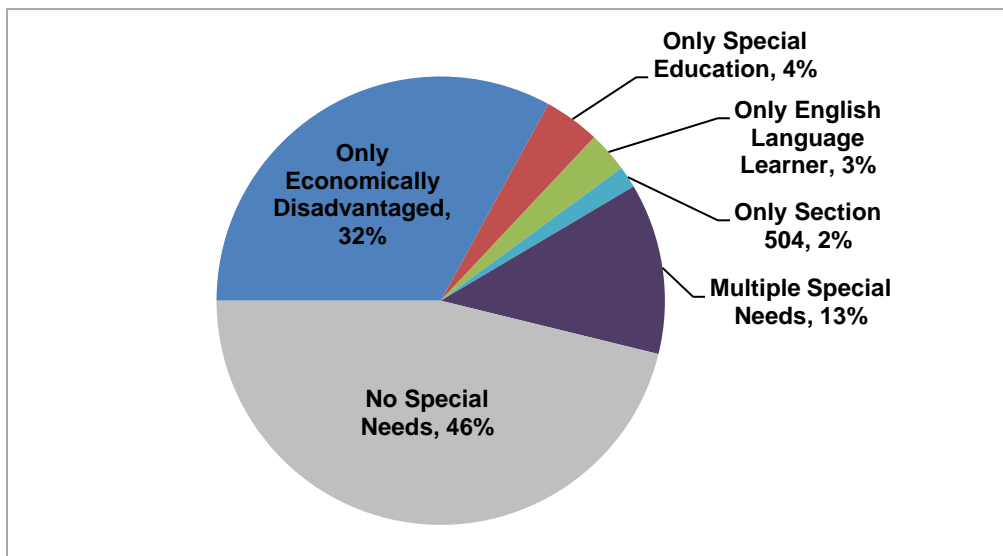
Table 1. Official Fall Enrollment for Grades K to 12, Public and Private Schools

	2017-18	2018-19	2019-20
Public Schools	179,255	179,698	179,331
% of total enrollment	84.7%	85.1%	85.4%
Department schools	168,095	168,152	167,454
% of public schools enrollment	93.7%	93.5%	93.3%
Charter schools	11,160	11,546	11,877
% of public schools enrollment	6.2%	6.4%	6.6%
Private Schools	32,376	31,312	30,492
% of total enrollment	15.2%	14.8%	14.5%
Total	211,631	211,010	209,823

Note: Due to rounding, percentages may not total to 100%.

Sources: Hawaii State Department of Education: Office of Strategy, Innovation and Performance; Assessment and Accountability Branch; Hawaii Association of Independent Schools.

Figure 1. Percent of Public School Students With Special Needs, Unduplicated Count



Note: Graph represents student count as of 12/20/2019.

Source: Hawaii State Department of Education: Office of Strategy, Innovation and Performance; Assessment and Accountability Branch.

Table 2. Department of Education Teacher Credentials

	2017-18	2018-19	2019-20
Fully Licensed	95%	95%	96%
Advanced Degree	37%	38%	38%
5+ Years at the Same School	58%	57%	58%

Note: These figures do not include teachers at Charter schools.

Source: Hawaii State Department of Education: Office of Talent Management.

Table 3. Funding By Source and Year (In Millions)

	2017-18	2018-19	2019-20
Appropriated Funds	\$3,148	\$3,302	\$3,458
State			
General	\$2,773	\$2,930	\$3,078
Special	\$84	\$84	\$87
Trust	\$16	\$16	\$16
Federal	\$275	\$272	\$277

Note: Due to rounding, total of State and Federal funds may not equal Appropriated Funds.

Source: Hawaii State Department of Education: Office of Fiscal Services.

Table 4. Safety and Well-Being

	2017-18	2018-19	2019-20
Students Not Suspended	96%	96%	97%
Safety % Positive Responses			
Students			
Elementary	72%	71%	68%
Middle	64%	64%	59%
High	63%	64%	59%
Teachers	75%	74%	72%
Well-Being % Positive Responses			
Teachers	75%	74%	73%

Source: Hawaii State Department of Education: Office of Strategy, Innovation and Performance; Assessment and Accountability Branch.

Table 5. Hawaii Statewide Assessment Program, Percent Meeting Standard

	2017-18	2018-19	2019-20
Language Arts	54%	54%	--
Mathematics	42%	43%	--
Science	46%	44%*	--

Note: Due to the COVID-19 pandemic and subsequent ED waiver from testing, there are no results for SY2019-20. Results are based on **students enrolled for the school year**.

Language Arts and Mathematics assessments include the Smarter Balanced Assessment (SBA), HSA-Alternate (HSA-Alt) and Kaiapuni Assessment for Educational Outcomes (KAEO). The Science assessments include the HSA Science (grades 4 and 8), Biology I End-of-Course Exam (grade 11), HSA-Alt and KAEO.

*Result based on the Next Generation Science Standards (NGSS) bridge test.

Source: Hawaii State Department of Education: Office of Strategy, Innovation and Performance; Assessment and Accountability Branch.

Table 6. Hawaii Statewide Assessment Program, Percent in Each Standard Level

Language Arts								
Grade	2017-18				2018-19			
	Not Met	Nearly Met	Met	Exceeded	Not Met	Nearly Met	Met	Exceeded
3	25%	22%	24%	28%	26%	22%	23%	29%
4	30%	19%	24%	27%	30%	18%	24%	28%
5	25%	19%	31%	26%	25%	19%	30%	26%
6	23%	25%	33%	20%	23%	25%	33%	19%
7	24%	23%	35%	17%	25%	23%	35%	18%
8	21%	24%	37%	18%	23%	25%	34%	18%
11	17%	22%	34%	26%	18%	23%	33%	26%
Mathematics								
Grade	2017-18				2018-19			
	Not Met	Nearly Met	Met	Exceeded	Not Met	Nearly Met	Met	Exceeded
3	23%	23%	29%	25%	23%	22%	29%	27%
4	22%	31%	28%	19%	21%	30%	28%	21%
5	29%	28%	20%	24%	29%	27%	19%	25%
6	29%	29%	22%	20%	31%	28%	21%	19%
7	35%	28%	21%	16%	35%	26%	20%	18%
8	40%	23%	18%	20%	37%	24%	18%	20%
11	40%	28%	22%	10%	42%	28%	20%	10%
Science								
Grade	2017-18				2018-19*			
	Well-Below	Approaches	Meets	Exceeds	Well-Below	Approaches	Meets	Exceeds
4	9%	34%	44%	13%	9%	34%	43%	14%
8	24%	32%	31%	13%	29%	30%	30%	11%
High School	26%	40%	26%	9%	26%	39%	25%	9%

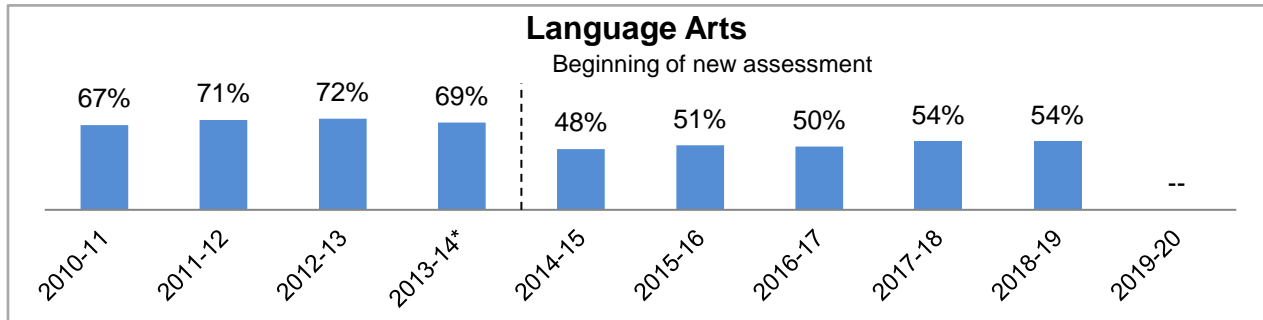
Note: Due to the COVID-19 pandemic and subsequent ED waiver from testing, there are no results for SY2019-20. Results are based on **students enrolled for the school year**.

Language Arts and Mathematics assessments include the SBA, HSA-Alt and KAEO. The Science assessments include the HSA Science (grades 4 and 8), Biology I End-of-Course Exam (grade 11), HSA-Alt and KAEO.

*Result based on the NGSS bridge test.

Source: Hawaii State Department of Education: Office of Strategy, Innovation and Performance; Assessment and Accountability Branch.

Figure 2. Hawaii Statewide Assessment Program, Percent Meeting Standard in Language Arts



Note: Due to the COVID-19 pandemic and subsequent ED waiver from testing, there are no results for SY2019-20. Results are based on **students enrolled for the school year**.

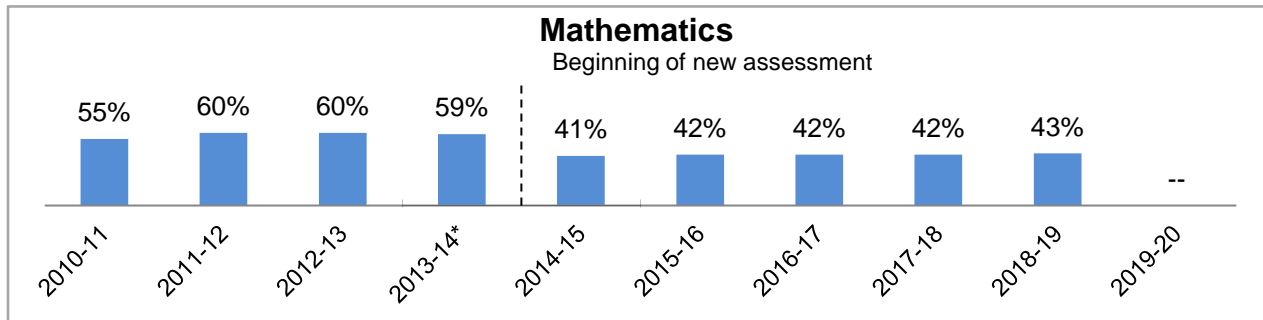
The Language Arts assessment includes the SBA, HSA-Alt and KAEO.

Beginning 2014-15, the SBA was administered replacing the HSA summative assessment. This resulted in the high school tested grade moving from 10 to 11. No changes were made to other tested grades (grades 3-8).

*Result based on SBA bridge test.

Source: Hawaii State Department of Education: Office of Strategy, Innovation and Performance; Assessment and Accountability Branch.

Figure 3. Hawaii Statewide Assessment Program, Percent Meeting Standard in Mathematics



Note: Due to the COVID-19 pandemic and subsequent ED waiver from testing, there are no results for SY2019-20. Results are based on **students enrolled for the school year**.

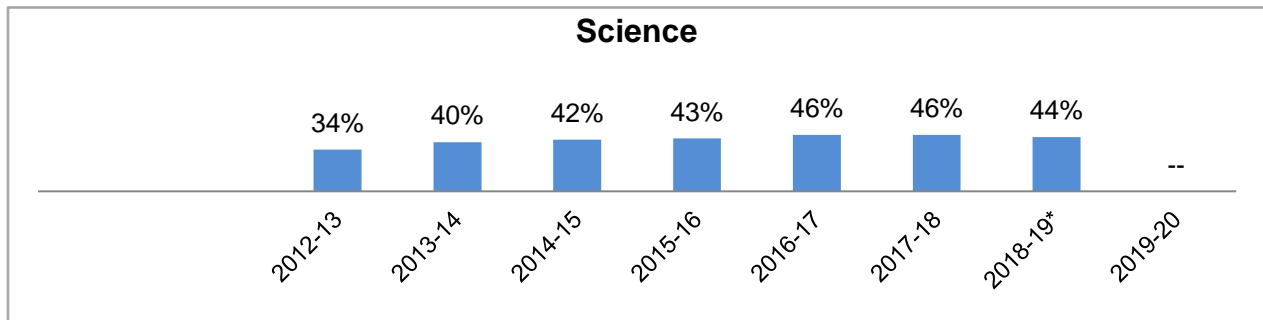
The Mathematics assessment includes the SBA, HSA-Alt and KAEO.

Beginning 2014-15, the SBA was administered replacing the HSA summative assessment. This resulted in the high school tested grade moving from 10 to 11. No changes were made to other tested grades (grades 3-8).

*Result based on SBA bridge test.

Source: Hawaii State Department of Education: Office of Strategy, Innovation and Performance; Assessment and Accountability Branch.

Figure 4. Hawaii Statewide Assessment Program, Percent Proficient in Science



Note: Due to the COVID-19 pandemic and subsequent ED waiver from testing, there are no results for SY2019-20. Results are based on **students enrolled for the school year**.

The Science assessments include the HSA Science (grades 4 and 8), Biology I End-of-Course Exam (grade 11), HSA-Alt and KAEO.

*Result based on NGSS bridge test.

Source: Hawaii State Department of Education: Office of Strategy, Innovation and Performance; Assessment and Accountability Branch.

Table 7. Four-Year Graduation and Dropout Rates

	2017-18	2018-19	2019-20
Graduation	84.4%	85.1%	86.2%
Dropouts	12.6%	11.8%	10.8%
Others*	2.8%	2.9%	2.8%

Note: Due to rounding, percentages may not total to 100%.

*Others include high school completers who received a special education certificate of completion in lieu of a diploma and students who are still attending school and did not graduate within the four-year time frame.

Source: Hawaii State Department of Education: Office of Strategy, Innovation and Performance; Assessment and Accountability Branch.

Table 8. High School Diplomas

	2017-18	2018-19	2019-20*
Regular Diploma	94.6%	95.4%	94.8%

Note: *Due to the COVID-19 pandemic and closing of schools after the 3rd quarter, graduation requirements were modified in SY2019-20.

Source: Hawaii State Department of Education: Office of Strategy, Innovation and Performance; Assessment and Accountability Branch.

Table 9. Honors Recognition Certificates

	2017-18	2018-19	2019-20
Academic Honors Recognition Certificate	22.9%	25.5%	24.0%
CTE Honors Recognition Certificate	11.9%	14.9%	15.0%
STEM Honors Recognition Certificate	3.5%	3.8%	3.3%

Note: Each percent is the percentage based on the number of students in the respective class.

Source: Hawaii State Department of Education: Office of Strategy, Innovation and Performance; Assessment and Accountability Branch.

Table 10. Advanced Placement (AP) Program

	2017-18	2018-19	2019-20
Number of students enrolled in at least one AP course	7,943	6,956	6,960
Number of students who took at least one AP exam	6,945	6,985	5,921
Number of exams taken	10,453	10,763	9,115
Number of AP exam results with a score of 3 or higher	4,560	4,745	4,691
Percent of exams passed	44%	44%	51%

Source: Hawaii State Department of Education: Office of Curriculum and Instructional Design.

Profiles and Trends

Table 11. Number of Public Schools (and Percentage of Total Schools by Type)

Type of School	2017-18		2018-19		2019-20	
Total	292	100%	292	100%	293	100%
Department Schools						
Elementary	168	58%	168	58%	168	57%
Middle/Intermediate	38	13%	38	13%	38	13%
High	33	11%	33	11%	33	11%
Multi-Level	16	5%	16	5%	16	5%
Special (HSDB*)	1	<1%	1	<1%	1	<1%
Charter Schools	36	12%	36	12%	37	13%
Complex Areas	15	n/a	15	n/a	15	n/a

Note: *Hawaii School for Deaf & Blind.

Source: Hawaii State Department of Education: Office of Strategy, Innovation and Performance; Assessment and Accountability Branch.

Table 12. Student Enrollment

Enrollment	2017-18		2018-19		2019-20	
Official Enrollment Count	179,255	100%	179,698	100%	179,331	100%
K-6	101,214	56%	100,873	56%	99,436	55%
7-8	27,223	15%	27,626	15%	27,853	16%
9-12	50,818	28%	51,199	28%	52,042	29%
Special Education (SPED)	17,279	10%	17,591	10%	17,960	10%
English Language Learner (ELL)	14,740	8%	16,275	9%	16,986	9%
Economically Disadvantaged*	87,653	49%	85,760	48%	84,993	47%

Note: Due to rounding, enrollment percentages may not total to 100%.

*Students whose family income qualifies them for assistance through the National School Lunch Program are included in the "economically disadvantaged" count. Also included are estimated counts of students based on the Community Eligibility (CEP) requirements established by the U.S. Department of Agriculture.

Source: Hawaii State Department of Education: Office of Strategy, Innovation and Performance; Assessment and Accountability Branch.

Table 13. Progress and Completion

	2017-18	2018-19	2019-20
Daily Average Attendance Rates			
Elementary	94.6%	94.5%	94.4%
Middle/Intermediate	94.3%	94.3%	94.6%
High	92.6%	92.6%	92.3%
Multi-Level	91.2%	91.2%	91.4%
Charter	94.2%	93.9%	94.0%
Retention Rates			
Elementary	<0.5%	<0.5%	<0.5%
Middle/Intermediate	0.6%	0.6%	<0.5%
Four-Year Graduation and Dropout Rates			
Graduation	84.4%	85.1%	86.2%
Dropouts	12.6%	11.8%	10.8%
Others*	2.8%	2.9%	2.8%

Note: Due to rounding, Four-Year Graduation and Dropout percentages may not total to 100%.

*Others include high school completers who received a special education certificate of completion in lieu of a diploma and students who are still attending school and did not graduate within the four-year time frame.

Source: Hawaii State Department of Education: Office of Strategy, Innovation and Performance; Assessment and Accountability Branch.

Table 14. Staff, Full-Time Equivalent Positions

Positions	2017-18	2018-19	2019-20
Teachers			
Classroom Teachers	11,732.4	11,819.1	11,898.7
Librarians	142.5	134.5	125.5
Counselors	652.6	659.7	660.4
Administrators			
School	711.5	716.7	740.0
State & Complex Area	324.0	339.5	353.0
Other Support Staff	9,276.5	9,194.3	9,236.5
Total	22,839.5	22,863.8	23,014.1

Source: Hawaii State Department of Education: Office of Strategy, Innovation and Performance; Assessment and Accountability Branch.

Table 15. State Demographics

Census Data	2017 Est.	2018 Est.	2019 Est.
Populations	1,421,658	1,422,029	1,422,094
Youth Age Under 5 Years	91,417	90,388	88,842
Youth Age 5-9	84,608	85,114	84,852
Youth Age 10-14	84,030	83,667	83,615
Youth Age 15-19	78,077	77,674	77,712
Median Age, in Years	38.8	38.9	39.1
Households			
Total	455,502	456,782	459,424
Families	317,764	319,069	319,348
Avg. Family Size	3.59	3.58	3.58
Income*			
Median Family Income	\$87,024	\$90,935	\$94,982
Per Capita Income	\$32,511	\$34,035	\$35,567
Poverty, Families In	7.0%	6.7%	6.4%
Educational Attainment			
Percent High School or Higher	91.6%	91.8%	92.0%
Percent 4-yr Degree or Higher	32.0%	32.5%	33.0%

Note: Percentage figures are rounded at the first decimal place.

*Income figures are reported in inflation adjusted dollars, using 5-year estimates.

Source: U.S. Census Bureau; American Community Survey.

School Finance

Table 16. State School Budget

	2017-18	2018-19	2019-20
APPROPRIATED FUNDS (millions)			
State			
General	\$2,773	\$2,930	\$3,078
Special	\$84	\$84	\$87
Trust	\$16	\$16	\$16
Federal	\$275	\$272	\$277
TOTAL	\$3,148	\$3,302	\$3,458
EXPENDITURES (millions)			
State			
General	\$2,727	\$2,883	\$2,956
Special	\$52	\$47	\$40
Trust	\$11	\$15	\$5
Federal	\$222	\$257	\$282
TOTAL	\$3,012	\$3,202	\$3,283

Note: Figures include both expenditures and encumbrances for Department and Charter schools.

Due to rounding, total of State and Federal funds may not equal Appropriated Funds.

Source: Hawaii State Department of Education: Office of Fiscal Services.

Table 17. Key Finance Indicators

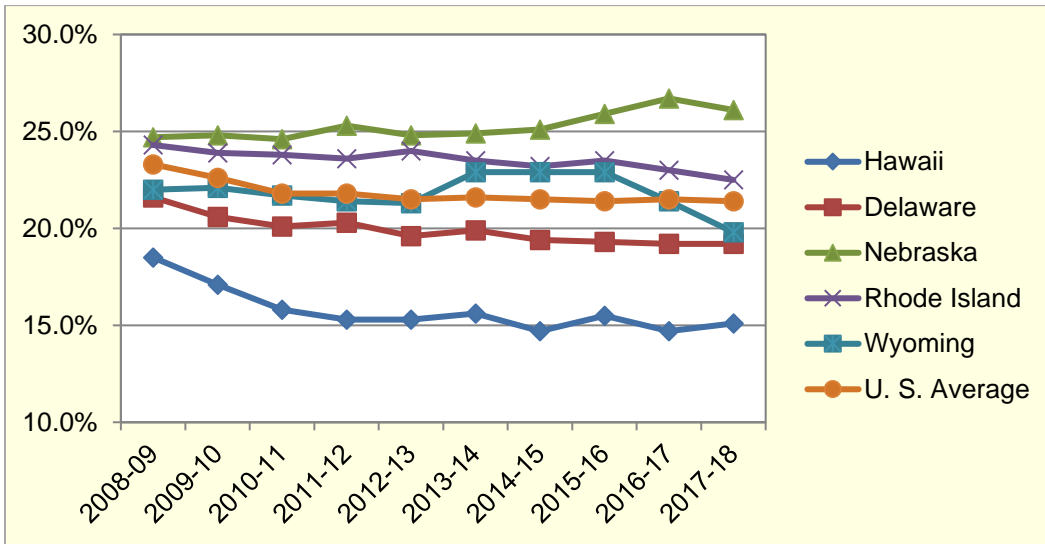
	2015-16	2016-17	2017-18
Per-pupil expenditure	\$13,748	\$14,322	\$15,242
Percent state & local expenditures for public education (per capita)	15.5%	14.7%	15.1%
Rank*	50th	50th	50th

Note: Data reported was the most current available at the time of publication.

*Rank is determined by comparing the "Percent state and local expenditures for public education (per capita)" of Hawaii to that of the other 49 states.

Sources: U.S. Census Bureau; National Center for Education Statistics.

Figure 5. Percentage of State & Local Expenditures per Capita Supporting Public Schools



Note: Comparisons are made with states most similar to Hawaii on measures directly related to school finance. Measures include K-12 enrollment, population, per capita income, per capita state and local revenue, and per capita state and local expenditures. Data reported was the most current data available at the time of publication.

Source: Digest of Education Statistics, National Center for Education Statistics, ED.

Educational Assessments

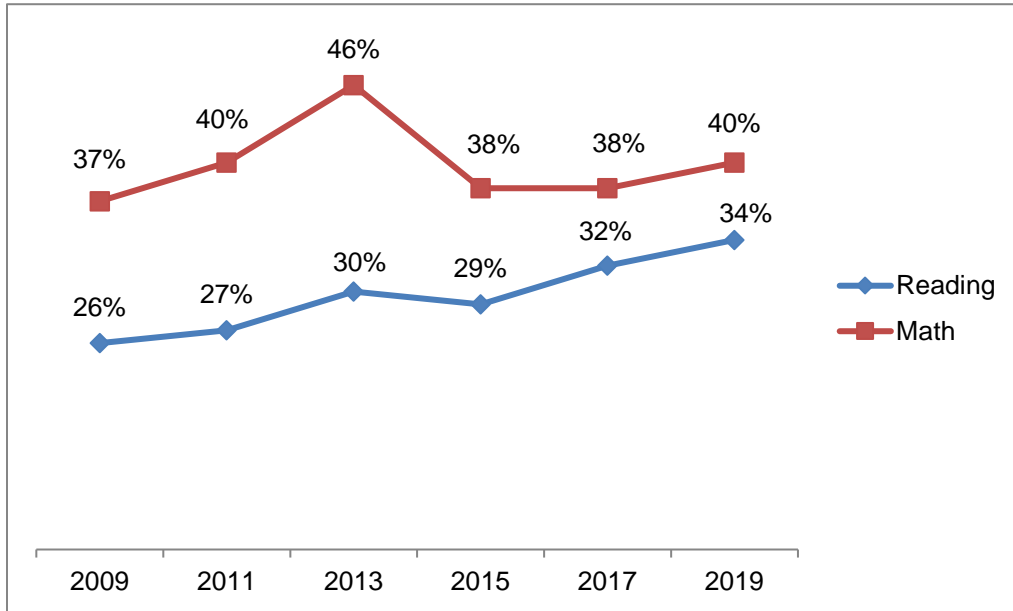
Table 18. National Assessment of Educational Progress (NAEP)

	2015		2017		2019	
NAEP Assessment	<i>(Percent Proficient & Advanced)</i>					
	Hawaii	Nation	Hawaii	Nation	Hawaii	Nation
Reading						
Grade 4	29%	35%	32%	36%	34%	34%
Grade 8	26%	33%	30%	36%	29%	32%
Mathematics						
Grade 4	38%	39%	38%	40%	40%	40%
Grade 8	30%	32%	27%	34%	28%	33%
Science						
Grade 4	30%	37%	--	--	--	--
Grade 8	23%	33%	--	--	--	--

Note: Data reported was the most current data available at the time of publication.

Source: Hawaii State Department of Education: Office of Strategy, Innovation and Performance; Assessment and Accountability Branch.

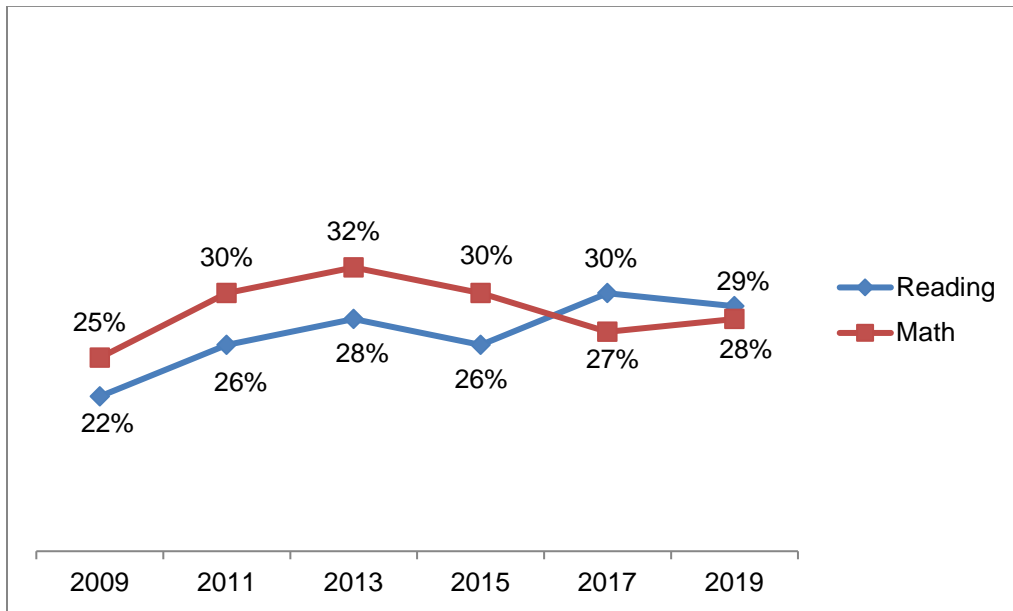
Figure 6. National Assessment of Educational Progress (NAEP), Percent Proficient & Advanced in Grade 4 Reading and Mathematics



Note: Data reported was the most current data available at the time of publication.

Source: Hawaii State Department of Education: Office of Strategy, Innovation and Performance; Assessment and Accountability Branch.

Figure 7. National Assessment of Educational Progress (NAEP), Percent Proficient & Advanced in Grade 8 Reading and Mathematics



Note: Data reported was the most current data available at the time of publication.

Source: Hawaii State Department of Education: Office of Strategy, Innovation and Performance; Assessment and Accountability Branch.

Table 19. Hawaii Statewide Assessment Program, Percent Meeting Standard

2015-16				2016-17			
Grade	All Schools	Department Schools Only	Charter Schools Only	Grade	All Schools	Department Schools Only	Charter Schools Only
English Language Arts				English Language Arts			
3	49.4%	49.6%	44.6%	3	48.4%	48.9%	38.7%
4	50.1%	50.7%	39.1%	4	48.4%	48.7%	42.7%
5	56.0%	56.5%	48.0%	5	53.1%	53.8%	43.6%
6	51.4%	51.7%	48.4%	6	49.3%	49.5%	47.3%
7	47.1%	47.1%	47.6%	7	49.6%	49.1%	56.1%
8	48.8%	48.6%	51.7%	8	47.1%	47.0%	48.3%
11	55.5%	55.4%	58.0%	11	56.9%	57.1%	53.3%
Mathematics				Mathematics			
3	53.3%	53.7%	46.6%	3	52.7%	53.3%	41.5%
4	47.0%	47.5%	38.0%	4	48.1%	48.5%	41.2%
5	42.4%	42.6%	38.3%	5	42.1%	42.6%	34.6%
6	39.4%	39.8%	33.8%	6	40.8%	41.1%	36.8%
7	37.0%	37.1%	35.6%	7	36.5%	36.4%	37.6%
8	37.6%	37.9%	34.2%	8	37.6%	38.1%	29.9%
11	30.3%	30.4%	28.3%	11	31.0%	31.4%	22.1%
Science				Science			
4	55.1%	56.0%	40.0%	4	56.8%	57.3%	46.3%
8	37.2%	37.4%	34.6%	8	42.0%	42.7%	33.1%
HS	33.1%	33.3%	29.2%	HS	35.9%	35.6%	43.6%
2017-18				2018-19			
Grade	All Schools	Department Schools Only	Charter Schools Only	Grade	All Schools	Department Schools Only	Charter Schools Only
English Language Arts				English Language Arts			
3	52.6%	53.0%	46.3%	3	52.3%	52.6%	48.5%
4	50.8%	51.3%	41.9%	4	51.5%	52.0%	44.0%
5	56.0%	56.2%	53.8%	5	56.7%	57.2%	49.5%
6	52.6%	52.6%	52.6%	6	52.4%	52.3%	54.0%
7	52.1%	52.0%	53.7%	7	52.8%	52.6%	56.1%
8	54.5%	54.3%	57.2%	8	51.5%	51.4%	53.2%
11	60.0%	60.1%	57.5%	11	58.7%	58.7%	60.1%
Mathematics				Mathematics			
3	54.2%	55.2%	39.0%	3	55.7%	56.4%	45.3%
4	47.3%	48.0%	35.4%	4	48.1%	49.0%	35.0%
5	42.9%	43.3%	36.4%	5	44.1%	44.8%	32.5%
6	41.4%	41.9%	34.7%	6	40.6%	41.1%	34.5%
7	37.1%	37.2%	36.5%	7	38.2%	38.5%	34.3%
8	38.6%	39.2%	29.8%	8	37.8%	38.4%	30.1%
11	32.0%	32.3%	23.9%	11	30.1%	30.2%	27.1%
Science				Science*			
4	56.3%	56.9%	47.0%	4	56.7%	57.1%	50.7%
8	43.6%	43.8%	40.4%	8	40.7%	40.5%	44.5%
HS	34.6%	34.5%	38.3%	HS	34.7%	34.6%	36.2%

Note: Due to the COVID-19 pandemic and subsequent ED waiver from testing, there are no results for SY2019-20.

Achievement rates for English Language Arts and Mathematics are based on **all students tested** who were administered either the SBA or HSA-Alt in that subject.

Achievement rates for Science are based on **all students tested** who were administered either the HSA Science or HSA-Alt for grades 4 and 8, or the Biology I End-of-Course Exam or HSA-Alt in HS (high school).

*Result based on the NGSS bridge test.

Source: Hawaii State Department of Education: Office of Strategy, Innovation and Performance; Data Governance and Analysis Branch.

Table 20. Students by Complex in SY2019-20

	Enrollment*	Economically Disadvantaged	Special Education	ELL	Graduated On-Time
ALL SCHOOLS	179,331	84,993	17,960	16,986	86%
<i>Department Schools</i>	167,454	79,263	16,959	16,697	86%
HONOLULU: 2 Complex Areas / 6 Complexes					
Farrington	7,343	64%	8%	29%	77%
Kaiser	3,661	13%	8%	5%	95%
Kalani	4,521	19%	8%	11%	93%
Kaimuki	3,668	58%	12%	26%	64%
McKinley	4,398	67%	9%	30%	77%
Roosevelt	6,037	38%	8%	7%	88%
CENTRAL: 2 Complex Areas / 6 Complexes					
Aiea	3,699	50%	11%	11%	93%
Moanalua	5,085	28%	9%	6%	95%
Radford	5,503	28%	11%	5%	91%
Leilehua	7,067	53%	12%	8%	89%
Mililani	7,924	20%	9%	3%	96%
Waiialua	1,356	45%	11%	5%	92%
LEEWARD: 3 Complex Areas / 6 Complexes					
Campbell	10,759	36%	8%	7%	89%
Kapolei	6,540	39%	10%	4%	89%
Pearl City	6,160	34%	9%	7%	91%
Waipahu	8,477	55%	8%	22%	84%
Nanakuli	2,136	83%	16%	6%	75%
Waianae	5,150	82%	16%	6%	83%
WINDWARD: 2 Complex Areas / 4 Complexes					
Castle	4,550	46%	15%	2%	85%
Kahuku	3,297	50%	11%	3%	86%
Kailua	2,605	53%	14%	4%	80%
Kalaheo	3,705	23%	11%	2%	96%
HAWAII: 3 Complex Areas / 9 Complexes					
Hilo	4,147	68%	13%	8%	83%
Waiakea	3,746	51%	10%	4%	91%
Kau	879	n/a	10%	22%	75%
Keaau	3,066	90%	13%	9%	92%
Pahoa	1,512	n/a	17%	8%	88%
Honokaa	1,662	62%	12%	8%	86%
Kealakehe	4,268	56%	9%	18%	76%
Kohala	785	63%	15%	7%	84%
Konawaena	3,346	62%	8%	14%	87%
MAUI: 2 Complex Areas / 7 Complexes					
Baldwin	4,289	45%	9%	8%	81%
Kekaulike	4,314	49%	12%	3%	77%
Maui	7,343	45%	9%	15%	80%
Hana	363	58%	14%	0%	83%
Lahainaluna	3,258	43%	8%	16%	77%
Lanai	577	32%	14%	16%	83%
Molokai	907	78%	15%	2%	87%
KAUAI: 1 Complex Area / 3 Complexes					
Kapaa	3,115	43%	10%	5%	96%
Kauai	3,820	44%	8%	9%	94%
Waimea	2,354	50%	9%	7%	88%
SPECIAL					
Hawaii School for Deaf & Blind	62	60%	n/a	35%	n/a
Charter Schools	11,877	5,730	1,001	289	85%

Note: *Based on the Official Enrollment Count for Fall 2019.

Source: Hawaii State Department of Education: Office of Strategy, Innovation and Performance; Assessment and Accountability Branch.

Table 21. Teachers by Complex in SY2019-20

		Classroom Teachers (Headcount)	Fully Licensed	5+ Years at Same School	Advanced Degree	Average Years Teaching Experience
ALL SCHOOLS		11,607	11,092	6,587	4,428	12.5
<i>Department Schools</i>		11,226	10,735 96%	6,463 58%	4,238 38%	12.6
HONOLULU	Farrington	505	98%	64%	38%	14.1
	Kaiser	221	98%	57%	40%	12.8
	Kalani	268	98%	63%	48%	13.8
	Kaimuki	284	98%	68%	39%	15.8
	McKinley	285	97%	59%	42%	12.9
	Roosevelt	366	98%	62%	37%	14.3
CENTRAL	Aiea	244	94%	58%	37%	12.9
	Moanalua	315	97%	59%	45%	13.2
	Radford	385	95%	59%	35%	13.1
	Leilehua	524	94%	55%	42%	12.3
	Mililani	477	98%	62%	43%	14.1
	Waialua	93	98%	57%	45%	13.1
LEEWARD	Campbell	676	93%	54%	35%	11.0
	Kapolei	423	98%	55%	35%	11.9
	Pearl City	398	98%	67%	32%	14.9
	Waipahu	532	97%	66%	34%	13.6
	Nanakuli	157	95%	58%	40%	10.9
	Waianae	386	84%	54%	30%	10.0
WINDWARD	Castle	341	96%	58%	33%	14.1
	Kahuku	232	97%	59%	35%	13.0
	Kailua	214	96%	65%	37%	13.5
	Kalaheo	246	96%	47%	40%	11.7
HAWAII	Hilo	297	98%	59%	34%	13.5
	Waiakea	246	98%	65%	39%	14.2
	Kau	67	99%	43%	33%	8.1
	Keaau	217	95%	60%	37%	13.0
	Pahoa	110	95%	58%	44%	10.3
	Honokaa	118	92%	41%	37%	10.1
	Kealakehe	288	91%	42%	39%	9.8
	Kohala	61	93%	49%	44%	10.2
Konawaena	220	91%	45%	37%	9.5	
MAUI	Baldwin	278	96%	50%	38%	12.6
	Kekaulike	295	95%	51%	39%	11.8
	Maui	476	96%	55%	35%	11.3
	Hana	33	79%	61%	36%	11.0
	Lahainaluna	215	92%	55%	39%	10.1
	Lanai	44	91%	48%	34%	9.8
	Molokai	71	93%	68%	42%	13.8
KAUAI	Kapaa	194	99%	55%	38%	12.9
	Kauai	247	98%	64%	40%	12.4
	Waimea	159	96%	50%	38%	12.1
SPECIAL						
Hawaii School for Deaf & Blind		18	83%	17%	78%	7.7
Charter Schools		381	357 94%	124 33%	190 50%	8.9

Source: Hawaii State Department of Education: Office of Strategy, Innovation and Performance; Assessment and Accountability Branch.

Table 22. SY2019-20 Wellness Indicators by Complex

	Number of Participating Schools	Percent of Participation	Schools with a Wellness Committee	All Food & Beverages Sold Met Compliance	Required Health Ed Classes Met Recommended Minutes	Required PE Classes Met Recommended Minutes	≥20 Minutes Recess Per Day	Average % of Wellness Guidelines Met
STATE OVERALL	216	84%	82%	43%	85%	90%	95%	84%
Farrington-Kaiser-Kalani	22	88%	91%	27%	91%	91%	100%	86%
Farrington	10	83%	90%	30%	90%	90%	100%	84%
Kaiser	5	83%	100%	20%	100%	100%	100%	91%
Kalani	7	100%	86%	29%	86%	86%	100%	86%
Kaimuki-McKinley-Roosevelt	25	89%	92%	48%	92%	100%	92%	87%
Kaimuki	9	90%	89%	56%	100%	100%	89%	87%
McKinley	8	100%	100%	63%	88%	100%	88%	87%
Roosevelt	8	80%	88%	25%	88%	100%	100%	88%
Aiea-Moanalua-Radford	19	86%	63%	53%	79%	79%	95%	81%
Aiea	6	86%	83%	50%	67%	83%	100%	81%
Moanalua	5	83%	60%	80%	100%	80%	80%	85%
Radford	8	89%	50%	38%	75%	75%	100%	79%
Leilehua-Miilani-Waiialua	18	90%	83%	39%	67%	83%	94%	83%
Leilehua	10	100%	90%	40%	90%	90%	90%	84%
Miilani	5	71%	80%	40%	40%	80%	100%	86%
Waiialua	3	100%	67%	33%	33%	67%	100%	76%
Campbell-Kapolei	11	65%	73%	27%	82%	82%	91%	79%
Campbell	6	60%	67%	33%	67%	83%	83%	82%
Kapolei	5	71%	80%	20%	100%	80%	100%	75%
Pearl City-Waipahu	16	94%	88%	88%	94%	100%	100%	87%
Pearl City	9	90%	78%	100%	100%	100%	100%	88%
Waipahu	7	100%	100%	71%	86%	100%	100%	85%
Nanakuli-Waianae	7	78%	71%	43%	86%	71%	100%	84%
Nanakuli	3	100%	100%	100%	100%	67%	100%	93%
Waianae	4	67%	50%	0%	75%	75%	100%	76%
Castle-Kahuku	15	94%	67%	47%	87%	93%	93%	84%
Castle	9	90%	67%	44%	78%	89%	89%	83%
Kahuku	6	100%	67%	50%	100%	100%	100%	86%
Kailua-Kalaheo	13	93%	92%	38%	100%	92%	85%	86%
Kailua	8	100%	88%	38%	100%	100%	88%	85%
Kalaheo	5	83%	100%	40%	100%	80%	80%	88%
Hilo-Waiakea	7	54%	86%	0%	71%	86%	86%	82%
Hilo	4	44%	75%	0%	75%	100%	75%	81%
Waiakea	3	75%	100%	0%	67%	67%	100%	83%
Kau-Keaau-Pahoa	8	89%	100%	50%	75%	88%	100%	89%
Kau	2	100%	100%	100%	50%	100%	100%	93%
Keaau	3	75%	100%	33%	100%	100%	100%	87%
Pahoa	3	100%	100%	33%	67%	67%	100%	88%
Honokaa-Kealakehe-Kohala-Konawaena	17	89%	71%	35%	65%	82%	94%	79%
Honokaa	4	100%	75%	0%	50%	75%	100%	77%
Kealakehe	4	80%	0%	50%	75%	75%	100%	73%
Kohala	3	100%	100%	0%	100%	100%	67%	81%
Konawaena	6	86%	100%	67%	50%	83%	100%	83%
Baldwin-Kekaulike-Maui	14	70%	86%	50%	100%	93%	100%	87%
Baldwin	2	40%	100%	50%	100%	100%	100%	96%
Kekaulike	5	71%	60%	40%	100%	100%	100%	79%
Maui	7	88%	100%	57%	100%	86%	100%	90%
Hana-Lahainaluna-Lanai-Molokai	9	82%	89%	11%	78%	100%	89%	83%
Hana	1	100%	0%	0%	100%	100%	100%	71%
Lahainaluna	3	75%	100%	0%	67%	100%	67%	85%
Lanai	1	100%	100%	0%	100%	100%	100%	82%
Molokai	4	80%	100%	25%	75%	100%	100%	85%
Kapaa-Kauai-Waimea	15	94%	87%	47%	93%	100%	100%	87%
Kapaa	5	100%	100%	60%	80%	100%	100%	85%
Kauai	4	80%	75%	25%	100%	100%	100%	89%
Waimea	6	100%	83%	50%	100%	100%	100%	89%

Note: Results reflect 216 of 256 eligible schools that completed the survey.

Source: Hawaii State Department of Health.

Table 23. Percent Meeting Standard on the Hawaii Statewide Assessment Program English Language Arts Assessments by Grade and Complex for SY2018-19

District	Complex	3	4	5	6	7	8	11	All Tested Grades
ALL SCHOOLS		52%	52%	57%	52%	53%	52%	59%	54%
Department Schools		53%	52%	57%	52%	53%	51%	59%	54%
HONOLULU	Farrington	41%	39%	46%	38%	42%	42%	49%	42%
	Kaiser	67%	71%	72%	74%	72%	68%	75%	71%
	Kalani	76%	78%	74%	65%	68%	76%	72%	72%
	Kaimuki	49%	51%	55%	41%	43%	47%	50%	48%
	McKinley	36%	39%	47%	20%	30%	32%	67%	42%
	Roosevelt	78%	76%	75%	60%	55%	53%	71%	66%
CENTRAL	Aiea	54%	50%	54%	51%	60%	65%	59%	56%
	Moanalua	62%	63%	71%	61%	73%	83%	79%	72%
	Radford	61%	59%	71%	69%	64%	63%	63%	64%
	Leilehua	57%	55%	60%	59%	61%	55%	53%	58%
	Mililani	73%	67%	75%	68%	70%	72%	65%	70%
	Waialua	65%	72%	79%	73%	56%	62%	47%	65%
LEEWARD	Campbell	53%	50%	54%	52%	55%	52%	58%	53%
	Kapolei	55%	52%	56%	57%	54%	51%	59%	55%
	Pearl City	70%	70%	75%	73%	63%	58%	68%	68%
	Waipahu	43%	40%	50%	50%	46%	46%	57%	48%
	Nanakuli	23%	28%	15%	25%	34%	20%	37%	26%
	Waianae	22%	29%	35%	31%	32%	29%	15%	28%
WINDWARD	Castle	46%	56%	62%	51%	56%	55%	68%	56%
	Kahuku	65%	58%	53%	60%	62%	50%	55%	58%
	Kailua	59%	59%	61%	54%	36%	34%	61%	56%
	Kalaheo	56%	58%	74%	76%	74%	69%	74%	69%
HAWAII	Hilo	49%	49%	55%	48%	40%	49%	60%	50%
	Waiakea	47%	58%	54%	49%	55%	50%	68%	54%
	Kau	36%	20%	25%	32%	9%	16%	38%	24%
	Keaau	44%	32%	37%	38%	40%	39%	40%	39%
	Pahoa	34%	24%	45%	38%	34%	31%	54%	37%
	Honokaa	32%	37%	39%	44%	45%	36%	55%	40%
	Kealakehe	33%	38%	43%	37%	39%	38%	55%	40%
	Kohala	32%	43%	49%	55%	55%	39%	55%	47%
Konawaena	40%	45%	55%	47%	60%	54%	57%	51%	
MAUI	Baldwin	53%	43%	53%	43%	35%	52%	48%	47%
	Kekaulike	62%	57%	66%	40%	48%	40%	66%	55%
	Maui	55%	55%	61%	55%	54%	52%	60%	56%
	Hana	18%	16%	47%	31%	41%	35%	40%	31%
	Lahainaluna	44%	55%	51%	39%	47%	37%	40%	45%
	Lanai	51%	39%	38%	13%	22%	32%	64%	37%
	Molokai	29%	36%	39%	56%	26%	39%	38%	37%
KAUAI	Kapaa	45%	38%	51%	45%	43%	38%	50%	44%
	Kauai	58%	48%	61%	56%	55%	45%	57%	54%
	Waimea	46%	40%	48%	38%	39%	38%	45%	42%
SPECIAL									
Hawaii School for Deaf & Blind		n/a	n/a	n/a	n/a	n/a	n/a	n/a	n/a
Charter Schools		49%	44%	50%	54%	56%	53%	60%	52%

Note: Due to the COVID-19 pandemic and subsequent ED waiver from testing, there are no results for SY2019-20.

Achievement rates are based on **all students** who were administered the SBA or HSA-Alt.

n/a = Data not reported to maintain student confidentiality (FERPA).

Source: Hawaii State Department of Education: Office of Strategy, Innovation and Performance; Data Governance and Analysis Branch.

Table 24. Percent Meeting Standard on the Hawaii Statewide Assessment Program
Mathematics Assessments by Grade and Complex for SY2018-19

District	Complex	3	4	5	6	7	8	11	All Tested Grades
ALL SCHOOLS		56%	48%	44%	41%	38%	38%	30%	43%
Department Schools		56%	49%	45%	41%	39%	38%	30%	43%
HONOLULU	Farrington	46%	39%	36%	26%	33%	31%	20%	33%
	Kaiser	67%	67%	59%	62%	60%	60%	48%	61%
	Kalani	83%	74%	65%	66%	64%	69%	50%	67%
	Kaimuki	51%	55%	45%	34%	33%	43%	18%	41%
	McKinley	42%	39%	41%	11%	11%	19%	33%	33%
	Roosevelt	80%	75%	70%	47%	49%	43%	45%	58%
CENTRAL	Aiea	54%	50%	39%	46%	61%	66%	21%	49%
	Moanalua	65%	61%	50%	53%	57%	66%	38%	55%
	Radford	66%	53%	53%	61%	46%	35%	31%	51%
	Leilehua	59%	52%	48%	46%	45%	44%	30%	48%
	Mililani	72%	65%	62%	53%	52%	49%	39%	56%
	Waialua	83%	71%	66%	67%	41%	44%	16%	56%
LEEWARD	Campbell	57%	46%	41%	40%	41%	37%	21%	41%
	Kapolei	64%	49%	39%	43%	41%	32%	32%	43%
	Pearl City	76%	70%	69%	66%	53%	45%	47%	62%
	Waipahu	47%	40%	42%	45%	32%	32%	34%	39%
	Nanakuli	33%	30%	17%	31%	15%	5%	6%	20%
	Waianae	29%	30%	24%	23%	17%	18%	3%	21%
WINDWARD	Castle	48%	48%	42%	41%	38%	31%	34%	41%
	Kahuku	67%	59%	40%	51%	45%	36%	25%	48%
	Kailua	65%	57%	53%	40%	21%	18%	26%	45%
	Kalaheo	64%	50%	54%	60%	47%	66%	41%	55%
HAWAII	Hilo	56%	44%	45%	44%	35%	40%	31%	43%
	Waiakea	55%	52%	45%	36%	41%	43%	40%	44%
	Kau	33%	22%	15%	27%	4%	4%	7%	17%
	Keaau	45%	28%	25%	27%	20%	18%	27%	27%
	Pahoa	29%	22%	30%	25%	18%	26%	31%	26%
	Honokaa	37%	36%	31%	45%	28%	34%	16%	33%
	Kealakehe	36%	31%	33%	22%	20%	31%	26%	29%
	Kohala	41%	26%	22%	11%	10%	16%	33%	22%
Konawaena	39%	39%	45%	29%	35%	37%	29%	37%	
MAUI	Baldwin	57%	44%	41%	29%	18%	33%	20%	35%
	Kekaulike	59%	49%	46%	16%	28%	39%	28%	39%
	Maui	60%	49%	48%	35%	37%	39%	28%	44%
	Hana	21%	9%	37%	15%	35%	25%	5%	21%
	Lahainaluna	44%	42%	32%	26%	28%	25%	17%	31%
	Lanai	55%	21%	14%	5%	13%	9%	3%	18%
	Molokai	18%	14%	29%	33%	21%	20%	16%	22%
KAUAI	Kapaa	49%	37%	34%	31%	30%	25%	34%	34%
	Kauai	61%	44%	47%	43%	53%	35%	37%	46%
	Waimea	52%	46%	36%	23%	28%	25%	23%	34%
SPECIAL									
Hawaii School for Deaf & Blind		n/a	n/a	n/a	n/a	n/a	n/a	n/a	n/a
Charter Schools		45%	35%	33%	35%	34%	30%	27%	35%

Note: Due to the COVID-19 pandemic and subsequent ED waiver from testing, there are no results for SY2019-20.

Achievement rates are based on **all students** who were administered the SBA or HSA-Alt.

n/a = Data not reported to maintain student confidentiality (FERPA).

Source: Hawaii State Department of Education: Office of Strategy, Innovation and Performance; Data Governance and Analysis Branch.

Table 25. Percent Meets and Exceeds Proficiency on the Hawaii Statewide Assessment Program Science Assessments by Grade and Complex for SY2018-19

District	Complex	4	8	HS	All Tested Grades
ALL SCHOOLS		57%	41%	35%	44%
Department Schools		57%	41%	35%	44%
HONOLULU	Farrington	48%	29%	29%	34%
	Kaiser	76%	54%	38%	54%
	Kalani	78%	75%	50%	67%
	Kaimuki	59%	32%	10%	36%
	McKinley	37%	10%	22%	25%
	Roosevelt	80%	40%	44%	53%
CENTRAL	Aiea	52%	53%	27%	46%
	Moanalua	71%	75%	51%	64%
	Radford	62%	47%	37%	51%
	Leilehua	63%	51%	22%	48%
	Mililani	73%	67%	55%	64%
	Waialua	78%	44%	40%	53%
LEeward	Campbell	54%	40%	44%	45%
	Kapolei	58%	31%	36%	41%
	Pearl City	78%	44%	35%	53%
	Waipahu	42%	31%	37%	37%
	Nanakuli	36%	8%	8%	15%
	Waianae	44%	25%	24%	29%
WINDWARD	Castle	60%	38%	30%	43%
	Kahuku	71%	28%	32%	45%
	Kailua	61%	36%	46%	50%
	Kalaheo	69%	63%	64%	65%
HAWAII	Hilo	53%	50%	26%	43%
	Waiakea	66%	31%	44%	45%
	Kau	31%	10%	27%	21%
	Keaau	30%	27%	28%	28%
	Pahoa	35%	12%	13%	21%
	Honokaa	44%	16%	20%	28%
	Kealakehe	45%	23%	36%	34%
	Kohala	50%	25%	64%	44%
	Konawaena	45%	43%	33%	40%
MAUI	Baldwin	47%	23%	20%	30%
	Kekaulike	65%	53%	48%	56%
	Maui	52%	53%	34%	46%
	Hana	16%	19%	11%	16%
	Lahainaluna	53%	36%	21%	36%
	Lanai	26%	9%	n/a	16%
	Molokai	25%	18%	12%	17%
KAUAI	Kapaa	50%	29%	34%	38%
	Kauai	49%	32%	23%	34%
	Waimea	50%	26%	13%	26%
SPECIAL					
Hawaii School for Deaf & Blind		n/a	n/a	n/a	n/a
Charter Schools		51%	45%	36%	45%

Note: Due to the COVID-19 pandemic and subsequent ED waiver from testing, there are no results for SY2019-20.

Achievement rates are based on **all students tested** who were administered the HSA Science (NGSS Bridge) or HSA-Alt for grades 4 and 8. The achievement rates for high school students are based on students who were administered either the Biology I End-of-Course Exam or the HSA-Alt for grade 11.

n/a = Data not reported to maintain student confidentiality (FERPA).

Source: Hawaii State Department of Education: Office of Strategy, Innovation and Performance; Data Governance and Analysis Branch.

Appendix A. Glossary

This glossary explains the educational and fiscal terms and measures contained in the Data Book. An “n/a” indicates data are “not appropriate” or “not reportable.” A “--” indicates data are missing or unavailable. Due to rounding of percentages, there may be slight differences among published reports (for example, 9.6% may be reported as 10% for the same measure in different reports).

Administrators, School: This is a Full-Time Equivalent (FTE) count of all principals and vice-principals.

Administrators, State and Complex Area: This is an FTE count of the positions responsible for the administrative support of programs, curriculum, and state or federal legal requirements at the complex area and state levels. Examples of FTE positions include complex areas superintendents, evaluation specialists, facilities planners, personnel specialists, test development specialists, budget specialists, information (data) specialists, state and district curriculum/educational specialists, and safety/security program specialists.

Advanced Placement: A program in the United States created by the College Board which offers college-level curricula and examinations to high school students. American colleges and universities may grant placement and course credit to students who obtain high scores on the examinations.

Appropriated Funds: Funds determined by the state legislature and enacted by the governor to provide basic support for the Hawaii State Department of Education to operate a statewide school district. Appropriated Funds include Executive Budget Bill appropriations for the Department and Charter schools plus actual expenditures made by Department of Budget and Finance (B&F) for both Department and Charter schools employer’s share of the cost of the employees’ retirement system and health insurance costs and related debt service. Beginning in FY 2009-10, appropriations for DOE related retirement benefit payments, health premium payments, and debt service payments were transferred to B&F. These amounts have continued to be included in the Appropriated Funds on this report for comparability and to present the total cost of public education.

Attendance Rate: The percentage of the official student enrollment attending school every day during the school year. For example, 95% means that on any given day during the given school year, an average of 95% of the students are present in school.

Average Years Teaching Experience: This is a simple average of the number of years of approved teaching experience within the Hawaii Department of Education.

Charter Schools: Charter schools are public schools operated and managed by independent governing boards. They operate under a performance contract with the State Public Charter School Commission, the statewide charter school authorizer. The Commission approves quality applications for new charter schools, monitors the performance and legal compliance of existing charter schools, and is responsible to the Board of Education.

Classroom Teachers, FTE or Headcount: An FTE Classroom Teacher count is a position count of all teachers who are directly teaching students. Unlike FTE, “Headcount” is a simple count of the number of teachers who are directly teaching students. Thus, 1.5 FTE teachers may have a headcount of two (one 1.0 FTE and one 0.5 FTE) or three (three teachers in 0.5 FTE positions).

Community Eligibility Provision (CEP): Is a non-pricing meal service option for schools and school districts in low-income areas. CEP allows the nation’s highest poverty schools and districts to serve breakfast and lunch at no cost to all enrolled students without collecting household applications. For additional information visit the U.S. Department of Agriculture Food and Nutrition Service website: <https://www.fns.usda.gov/cn/community-eligibility-provision>.

Complex: This is a smaller division within a Complex Area consisting of a high school and the middle/intermediate and elementary schools within its attendance boundary.

Complex Area: This is an administrative unit made up of two or more complexes.

Demographics, State: Figures reported by the U.S. Census Bureau for years other than decennial 10-year censuses are estimates and are updated periodically. Such estimates in this report are from the American Community Survey. For an explanation of terms, definitions, and criteria used for classification, please visit the U.S. government website for the census: <https://www.census.gov/>.

Dropout Rate: This four-year dropout rate is the percentage of high school students who have not returned to school and have either officially exited as “drop-outs”, have school enrollment statuses that are undetermined, or have not graduated within four years.

Economically Disadvantaged: These are students whose families meet the income qualifications for the federal free/reduced-cost lunch program. This is an indicator of school-community poverty.

English Language Learners (ELL): Students certified as receiving English-as-a-second-language services.

Enrollment Count, Official: The official enrollment count of each school is reported to the state upon the yearly opening of school. A school’s enrollment may fluctuate over the course of the school year; thus, a school’s enrollment count taken mid-year may be different from its official enrollment count.

Federal Funds: Funds provided by the federal government for use by the state public school system through grants from various federal agencies, such as the U.S. Department of Education (ED), U.S. Department of Defense, and U.S. Department of Agriculture.

Five or More Years at Same School: Percentage of teachers who have taught at one school for five or more years. It is an indicator of school staffing stability. Schools with higher levels of stability are considered most successful in implementing and sustaining school improvement efforts.

Fully Licensed: Teachers who meet the requirements (e.g., earned at least a bachelor’s degree and completed an approved teacher training program) to be fully licensed by the Hawaii State Teachers Standards Board.

Full-Time Equivalent (FTE): These are position counts and are the sum of full- and part-time positions. Note that partial counts are possible. For example, one full-time (1.0 FTE) and one half-time (0.5 FTE) would count as 1.5 FTEs.

General Funds: The primary source of funding for the state public school system provided by the state through taxpayer revenues.

Graduation, Graduation Rate, Graduate On Time, Four-Year Graduation: Count or percentage of all high school students, including charter school students, who had completed high school within four years of their 9th-grade entry date. Special Education students receiving certificates of completion and students taking more than four years to complete high school are not included. For more information on the Adjusted Cohort Graduation Rate methodology, see the ESSA Graduation Rate Guidance on the ED website: <https://www2.ed.gov/policy/elsec/leg/essa/essagraterateguidance.pdf>.

Hawaii State Alternate (HSA-Alt) Assessment: The HSA-Alt in English Language Arts, Mathematics and Science are administered to students to promote, improve access to, and measure the attainment of standards for students with significant cognitive disabilities.

Honors Recognition Certificates: Honors Recognition Certificates will be awarded to students who meet the requirements for the Hawaii High School Diploma, attain a cumulative grade point average of 3.0 or above, and earn the required credits for Academic, CTE, or STEM Honors. Students are able to earn a certificate for each honors distinction. For more information on the graduation requirements and the Honors Recognition Certificate requirements visit the Hawaii Department of Education (HIDOE) website: <http://www.hawaiipublicschools.org/TeachingAndLearning/StudentLearning/GraduationRequirements/Pages/Requirements.aspx>.

Kaipuni Assessment of Education Outcomes (KAEO): Assessments administered in the Hawaiian language to Hawaiian language immersion students in Language Arts, Mathematics, and Science.

National Assessment of Educational Progress (NAEP): A congressionally-mandated project administered by the ED's National Center for Education Statistics (NCES). The NAEP program consists of assessments in a variety of subject areas (e.g., Civics, U.S. History, and Science), and the Every Student Succeeds Act (ESSA) requires districts that receive Title I funding to participate in the NAEP mathematics and reading assessments for grades 4 and 8. NAEP is the only assessment that serves as a common measure of student achievement across the country, providing valuable data on student performance in comparison to other states and long-term trends in student performance within and across key demographic groups. NAEP results have been an important metric to analyze the impact of systemic and school-level efforts on student achievement for nearly the past 30 years. The metrics that NAEP uses include average scale scores and the percentages of students achieving NAEP Advanced, NAEP Proficient, NAEP Basic, and NAEP Below Basic. Advanced and Proficient denote mastery of challenging subject matter, including success on some items that are above the grade level of the students being tested. NAEP defines Basic as denoting partial mastery of prerequisite knowledge and skills that are fundamental for proficient work at each grade assessed. Below Basic means performance below the grade level being tested.

Not Suspended, Students: The number of students who are not suspended by the school and an indicator of appropriate student behavior at school.

Others: Percentage of high school completers who received a special education certificate of completion in lieu of a diploma and students who are still attending school and did not graduate in the four-year time frame. These students are not included in the "Dropout" count or in the "Graduation On-time" count.

Perceptions of Safety and Well-Being, Student and Teacher: Positive responses ("Completely Agree", "Strongly Agree" and "Agree") to a set of items on the Hawaii State Department of Education's annual School Quality Survey (SQS) regarding school safety and well-being. The percentage of responses that are positive is reported.

Per-Pupil Expenditure: The numbers reported by the National Center of Education Statistics (NCES) may be used for state-to-state comparisons. Numbers are based on membership and can be expected to be smaller than per-pupil expenditures based on average daily attendance. Current expenditure for public elementary and secondary education in a state is divided by the student membership. Current expenditures are funds spent for the operation of local public schools and local education agencies, including such operating expenses as salaries for school personnel, student transportation, school books and materials, and energy costs, but excluding capital outlay and interest on school debt.

Private Schools: Privately-operated schools not under the direction of the Hawaii State Department of Education.

Retention Rates for Elementary: Percentage of students, excluding kindergartners, who are not promoted to the next grade level. A low retention rate is desired.

Retention Rates for Middle & Intermediate: Percentage of 8th grade students who are not promoted to 9th grade the following year. A low retention rate is desired.

Schools, Total: The total number is the sum of all public schools. All Department, Charter, and special schools are in this count. The Community Schools for Adults are not included.

Section 504: Regulation requiring schools to provide a "free appropriate public education" (FAPE) to each qualified student with a disability who is in the school district's jurisdiction regardless of the nature or severity of that disability.

Smarter Balanced Assessment (SBA): These tests of the Hawaii Statewide Assessment Program (HSAP) measure student achievement in English Language Arts, Mathematics, and Science based on Hawaii Department of Education content standards. The percentages shown are assessment results. "*Percent Meeting Standard*" is derived from test results that meet or exceed the achievement standard (i.e., achievement cut-score).

Special Education (SPED): This count and percentage contain all special education students listed on the official enrollment report as receiving special education services.

Special Funds: Funds generated through revenue sources other than state taxpayer revenues, such as cafeteria collections from students, adult education tuition/fees, summer school tuition, driver education fees, facility rental fees, and lost textbook penalty fees.

Special Needs, Multiple: Students identified and/or qualified as special needs under more than one of the following categories: economically disadvantaged as determined by receiving free/reduced-cost lunch, Section 504 classification, and certified as receiving special education or English Language Learner services.

State and Local Expenditures Supporting Public Education, Percent: This percentage is published in the annual ED National Center of Education Statistics (NCES) *Digest of Educational Statistics* publication. The percentage is calculated by dividing the states' "Total, all general expenditures per capita" by the states' "Elementary and secondary education expenditures per capita." The "Total, all general expenditures per capita" includes state and local government expenditures for education services, social services, and income maintenance, transportation, public safety, environment and housing, governmental administration, interest on general debt, and other general expenditures, including intergovernmental expenditure to the federal government, as reported by the state's NCES Common Core of Data Financial Survey.

Support Staff, Other: This is an FTE count that encompasses a wide range of positions that support schools. This category may include, but is not limited to, school assessment liaisons, athletic directors, registrars, state and district resource teachers, school psychologists, custodians, cafeteria workers, school secretaries, school security guards, educational assistants, occupational therapists, mental health assistants, behavioral specialists, and student service coordinators. Note that the assignment of positions to categories is based on ED National Center for Education Statistics Common Core of Data Non-Fiscal Survey requirements.

Trust Funds: Funds segregated for specific purposes, such as foundation grants and athletic gate receipts.

Wellness: Student wellness is affected by nutrition education, the food served in schools, and the amount of physical activity students engage in. The Department of Education also recognizes that when students' wellness needs are met, they attain higher achievement levels.

Appendix B. References and Resources

Educational and Accountability Reports

Accountability Resource Center

This is a web portal for educational accountability information. It complements the many federally- and state-required accountability reports at the school, complex, complex area, and state levels that are available as static documents. Visit the HIDOE's ARCH (Accountability Resource Center-Hawaii) website: <http://arch.k12.hi.us>.

Enrollment

These reports have student enrollment figures by districts, state, and grade-level groups and are available on the HIDOE School Reports page:

<http://www.hawaiipublicschools.org/VisionForSuccess/SchoolDataAndReports/SchoolReports/Pages/home.aspx>.

National Assessment of Educational Progress (NAEP)

The NAEP website has a variety of information available to educators and the general public. The NAEP Data Explorer (<https://www.nationsreportcard.gov/ndecore/landing>) is a useful tool to access data on student performance at the national and state level, which can also be disaggregated by key demographic groups. The website also provides access to a Questions Tool (containing numerous released items from the NAEP assessments) and a Take NAEP Now tool that teachers may use as a sample assessment in their classroom. Any questions regarding the NAEP assessments or the resources on the NAEP website may contact NAEP State Coordinator Dewey Gottlieb, at dewey.gottlieb@k12.hi.us or (808) 307-3636. Visit the NAEP website: <https://nationsreportcard.gov>.

School Quality Survey (SQS)

The survey gathers student, parent, and school staff perceptions that are useful for school improvement and planning efforts. The SQS also provides information about parent involvement and parent and student satisfaction with their schools. SQS reports are available on the ARCH website:

<http://arch.k12.hi.us/reports/sqs>.

School Status and Improvement Report (SSIR)

Each SSIR has a description of the school and its setting, a summary of progress in implementing Hawaii Department of Education standards, and information on school resources and educational outcomes.

SSIR reports are available on the ARCH website: <http://arch.k12.hi.us/reports/ssir>.

Strive HI

The current school accountability and improvement system is designed to meet the needs of Hawaii's students, educators, and schools. It aligns and connects our key state education policies and initiatives to position students and educators for success. For more information, visit the ARCH website

(<http://arch.k12.hi.us>) or the HIDOE Strive HI Performance System page

(<http://www.hawaiipublicschools.org/VisionForSuccess/AdvancingEducation/StriveHIPerformanceSystem/Pages/home.aspx>).

Trend Report: Educational & Fiscal Accountability

This annual report contains three years of trend data on schools, school complexes, and the Hawaii State Department of Education at selected benchmark grade levels with performance indicators in areas relating to student achievement, safety and well-being, and civic responsibility. These reports are designed to present trend data information to the public in a concise format for each complex and school as well as for the state. Trend reports are available on the ARCH website: <http://arch.k12.hi.us/reports/trend-report>.

Financial Reports

Allocations by School Program

These annual reports contain dollar amounts allocated by Allocation Number, Program, or Organization and can be found on the HIDOE Budget page:

<https://www.hawaiipublicschools.org/ConnectWithUs/Organization/Budget/Pages/allocations.aspx>.

Annual Financial Reports

This Annual Financial Report is prepared each year to inform interested persons of the total cost of public education in the State of Hawaii. The reports provide both Operating and Capital Improvement Project fund information that is useful in presenting our educational system's financing, expenditures, and per-pupil information. This report can be found on the HIDOE State Reports page:

<http://www.hawaiipublicschools.org/VisionForSuccess/SchoolDataAndReports/StateReports/Pages/home.aspx>.

Audit

The annual report on the financial audit of the Hawaii State Department of Education forms an opinion on the fairness of the presentation of its financial statements to comply with requirements for state and local governments that receive federal financial assistance. This report can be found on the HIDOE State Reports page:

<http://www.hawaiipublicschools.org/VisionForSuccess/SchoolDataAndReports/StateReports/Pages/home.aspx>.

Budget

These reports have fiscal information on budget restrictions, operating budget allocations (initial and supplemental), emergency appropriations, and biennium budgets and can be found on the HIDOE Budget page: <http://www.hawaiipublicschools.org/ConnectWithUs/Organization/Budget/Pages/home.aspx>.

Special Education Reports

Annual Performance Report & State Performance Plan

These documents are the state's plans and reports in accordance with the Individuals with Disabilities Education Improvement Act of 2004. Included are evaluations of the state's efforts and plans for improving implementation. For more information, visit the HIDOE Special Education Performance Report page:

<http://www.hawaiipublicschools.org/VisionForSuccess/SchoolDataAndReports/StateReports/Pages/Special-Education-Performance-Report.aspx>.

Due Process Hearing Redacted Decisions

The due process hearing redacted decisions are provided for public information. For more information, visit the HIDOE Special Education Performance Report page:

<http://www.hawaiipublicschools.org/VisionForSuccess/SchoolDataAndReports/StateReports/Pages/Special-Education-Performance-Report.aspx>.

Other Resources

Center on the Family

This resource provides access to research reports, informational articles, videos, brochures, and other materials designed to support and strengthen families in Hawaii. The Center on the Family at the University of Hawaii-Manoa (UH-Manoa) also issues an annual report on a core set of indicators reflecting overall well-being of Hawaii families. For more information, visit the UH-Manoa Center on the Family website: <http://uhfamily.hawaii.edu>.

Hawaii P-3

An initiative by Hawaii P-20 to increase children's social-emotional and cognitive development toward the end goal of reading at grade level by third grade. For more information, visit the Hawaii P-3 website: <https://www.hawaiip20.org/p-20-initiatives/early-childhood/>.

Hawaii P-20 Partnerships for Education

A statewide partnership led by the Good Beginnings Alliance, the Hawaii State Department of Education, and the University of Hawaii System to strengthen early childhood through post-secondary education so that all students achieve career and college success. Annual College and Career Readiness reports are available on its website. For more information, visit the Hawaii P-20 website: <https://www.hawaiip20.org/>.

State Public Charter School Commission

The State Public Charter School Commission (SPCSC or Commission) is the statewide charter school authorizer whose mission is to authorize high-quality public charter schools throughout Hawaii. The Commission approves quality applications for new charter schools and monitors the performance and legal compliance of existing charter schools. Charter schools are public schools operated and managed by independent governing boards that are responsible for the schools' financial, organizational, and academic viability. Although they are funded on a "per-pupil" basis separately from Department of Education-operated schools, charter schools are open-enrollment public schools that serve all students and do not charge tuition. Annual reports are available on its website: <http://www.chartercommission.hawaii.gov>.

Appendix C. Supplemental Data Tables

Data tables are available online at <http://arch.k12.hi.us/reports/hidoe-data-book>.

Table 1.	Enrollment in Hawaii Public and Private Schools.....	1
Table 2.	Enrollment by Complex Area	2
Table 3.	Enrollment of Students with Special Needs.....	3
Table 4.	Special Needs Affecting Public School Students in Hawaii	4
Table 5.	Average Daily Attendance Rates by School Type	5
Table 6.	Four-Year Graduation and Dropout Rates	6
Table 7.	Ethnicity of Students and Teachers	7
Table 8.	Hawaii Statewide Assessment Program Results.....	8
Table 9.	Chapter 19 Suspensions Categorized by Type of Incident.....	9
Table 10.	Administrative Staff as Proportion of Total Staff: Hawaii and Comparison States	10
Table 11.	Expenditure Per Pupil: Hawaii and Comparison States.....	11
Table 12.	Hawaii and States with Similar Financial Resources.....	12
Table 13.	Percent of State and Local Expenditures Supporting Public Education: Hawaii and Comparison States.....	13
Table 14.	Percent of State and Local Expenditures Supporting Public Education and Per-Pupil Expenditures: All States	14