



Evaluation Matters

Volume 7, Number 3

November 2017

Steven M. Urdegar, Ph.D., Director

Charter and Traditional Schools: *An Analysis of Student Entry and Movement, 2016-17 to 2017-18*

1. What is the purpose of this report?

Changes to the proportion of the students enrolled at the charter and traditional schools in the M-DCPS result from the withdrawal of students leaving the district; the entry of students new to the District; and/or student movement into and between the schools. As of October 2017, 17.8% of the students active in the District attended a charter school. The primary purpose of this report is to examine the entries into and transfers between charter and traditional schools from October 2016 to October 2017.

2. Which populations were targeted in this report?

The sample for the study consisted of three groups: (a) students in the M-DCPS who attended the traditional or the charter schools during both 2016-17 and 2017-18, (b) students in the M-DCPS who attended the traditional or the charter schools during 2016-17 and did not attend during 2017-18, and (c) students new to the M-DCPS in 2017-18. Only students classified as “Active” and “Other” who were enrolled during the Fall Student Survey (October) of a given school year were included in this study.

3. How were the data for this report collected and analyzed?

Data were obtained from the student database files and student assessment records. Patterns of student transitions into the charter schools between October 2016 and October 2017 were examined by selected demographic and preliminary achievement categories, and presented via descriptive statistics. A projected estimate of potential enrollment at traditional schools was obtained based on the assumption that current charter school students would have attended their residence schools, based on established school attendance boundaries, had they not opted to enroll in a charter school.

4. What are the sources of changes in charter and traditional school enrollment, from 2016 to 2017?

Enrollment patterns were defined in terms of **withdrawals** (i.e., students active in October 2016 who were no longer active in October 2017) and three movement categories (a) **continuing students** who remained within the same governance structure (i.e. charter or traditional) from one year (October 2016) to the next (October 2017), (b) **transfer students** who moved from one governance structure to the other from one year to the next, and (c) **new entries** (October 2017). The number of students who transferred **into** one governance structure equals the number of students who transferred **out of** the other governance structure. Figure 1 depicts the enrollment at the charter and the traditional schools comprising each group of students as of October, 2017.

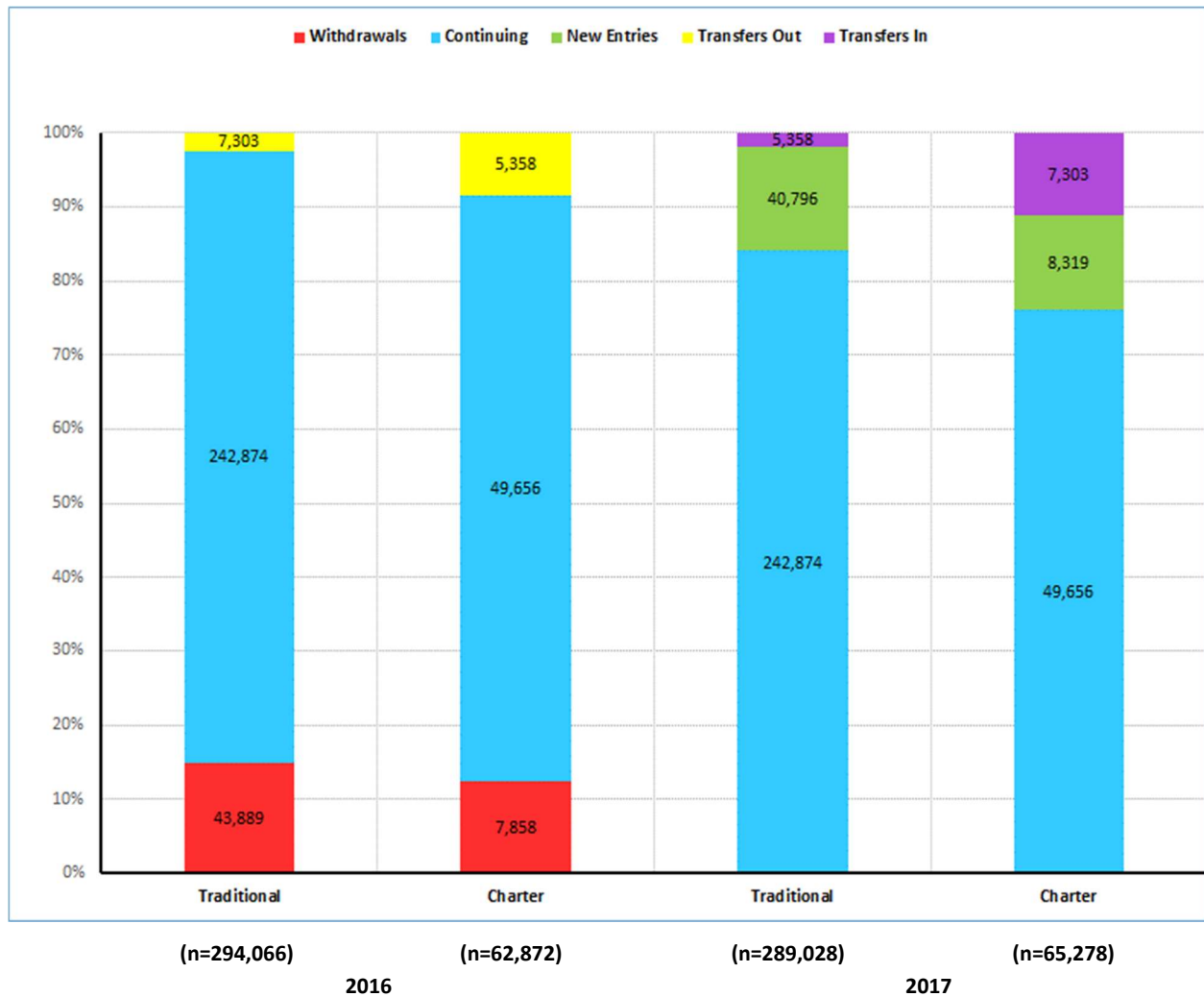


Figure 1. Sources of enrollment change (2016 to 2017).

Based on changes to the student population from October 2016 to October 2017, the sources of enrollment change in the Traditional and Charter schools were classified into four categories: Withdrawals (2016), Transfers-Out (different school-type, 2016), Transfers-In (different school-type, 2017), Continuing (same school-type, 2016/2017), New Entries (2017). Transfers-Out (2016) are equal to Transfers-In (2017). Because they occur prior to October, Figure 1 does not include the New Entries that occurred in 2016.

- While the percentage of charter schools' students who were new entries (12.7%, n=8,319) was comparable to the percentage of charter schools' students who withdrew (12.5%, n=7,858), the percentage of the traditional school's students who were new entries (14.1%, n=40,796) was smaller than the percentage of traditional school students who withdrew (14.9%, n=43,889).
- Of the students who were enrolled in the District from October 2016 to October 2017, the percentage who remained in the traditional schools (97.1%, n=242,874) was greater than the percentage of students who remained enrolled in the charter schools (90.3%, n=49,656).
- Transfers between governance structures accounted for much of the enrollment changes.
 - 5,358 students transferred from the charter schools to the traditional schools, representing about 8.5% of the sending charter school enrollment, but 1.9% of the receiving traditional school enrollment.

- 7,303 students transferred from the traditional schools to the charter schools, representing about 2.5% of sending traditional school enrollment, but 11.2% of the receiving charter school enrollment.

5. How do the withdrawals from/entries to the traditional and charter schools break down by type?

Figure 2 classifies the identified withdrawals (2016) and entries (2017) from/to M-DCPS into types, based on the codes presently defined by the Student Information System. Withdrawals as Public (schools outside the District), Private (schools outside the District), Completions (e.g., diploma, GED, Certificate of Completion), Early Terminations (e.g., whereabouts unknown, expulsions, runaways, etc.), Home Education, and Other (e.g., adult school, death, medical, etc.). Entries are classified as Public, Private, Foreign, Home Education, and Pre-K/K (new to school).

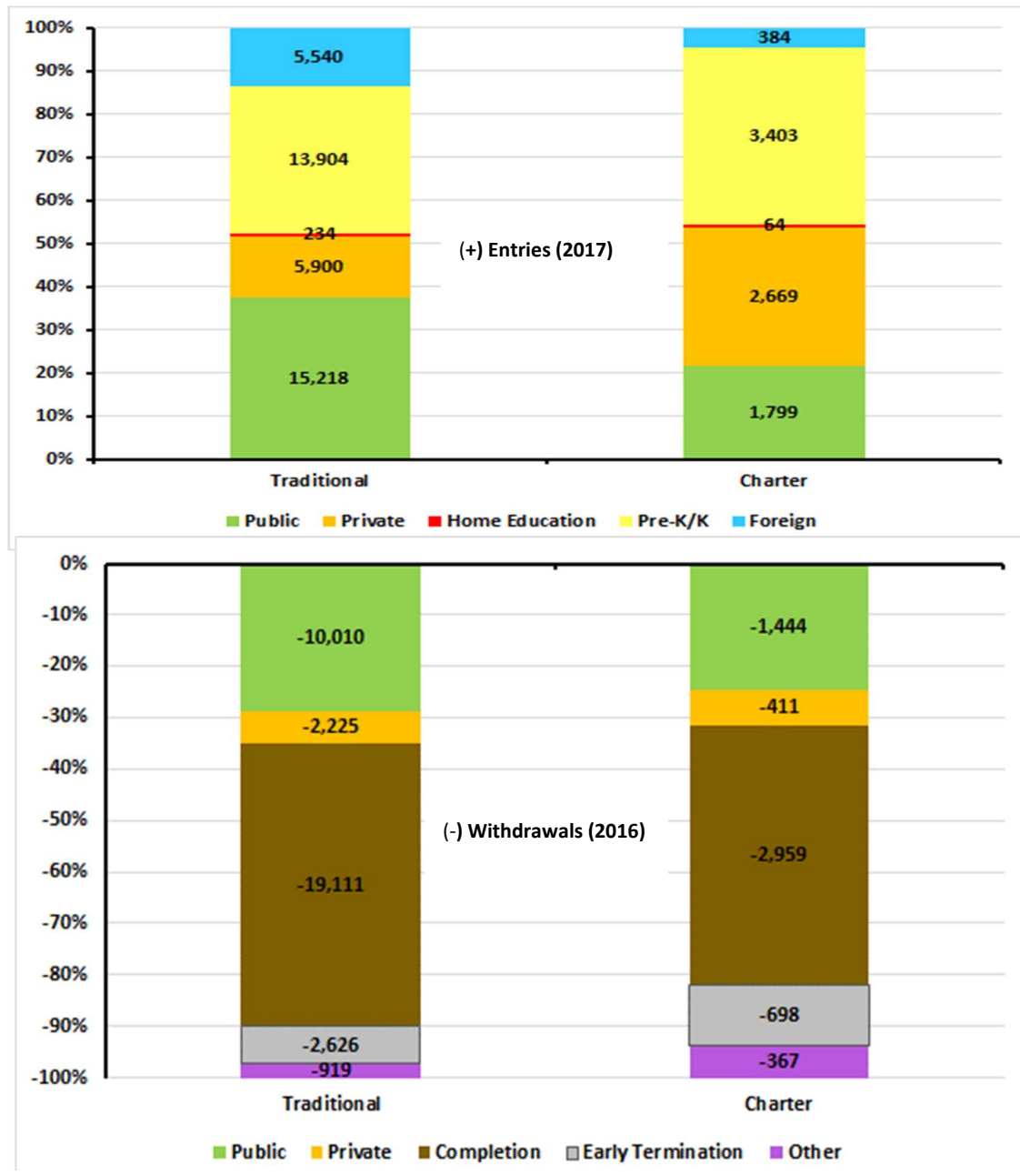


Figure 2. Entry (2017) and withdrawal (2016) codes to/from the District (2016 to 2017) classified by type.

- **Withdrawals**
 - Nearly 80% of the students who withdrew from Grades PK-12 during the 2016-17 school year (n=40,070) had identified reasons for doing so, as indicated by codes assigned to them.
 - Of those students, 28.6% from the traditional schools (n=10,010) and 24.6% from the charter schools (n=1,444) withdrew to attend a **public** school outside the district and/or state; while 54.8% at the traditional schools (n=19,111) and 50.8% at the charter schools (n=2,959) **completed** their studies by earning diplomas or certificates of completion.
 - Of those students, 11.9% from the charter schools (n=698) and 7.5% from the traditional schools (n=2,626) **terminated** their education **early**.
- **Entries**
 - Students from **private** schools comprised a much greater share of the entries to the charter schools (32.1%, n=2,669) than to the traditional schools (14.5%, n=5,900), while students from **public** schools outside the District/State comprised a smaller share of the entries to the charter schools (21.6%, n=1,799) than to the traditional schools (37.3%, n=15,218).
 - Students in **PreK/K** who were new to school comprised a higher percentage of the entries to the charter schools (40.1%, n=3,403) than to the traditional schools (34.1%, n=13,904), while students **Foreign** students comprised a much smaller share of the entries to the charter schools (4.6%, n=384) than to the traditional schools (13.5%, n=5,540).

The next several sections that follow examine the two principal sources of population changes to the District's traditional and charter schools from October 2016 to October 2017: (a) new entries to- and (b) transfers between- the traditional and charter schools. Students continuing within the same governance structure (i.e., traditional or charter), which do not change the composition of their student populations; and withdrawals, which mostly result from completion, termination, and relocation are not considered.

6. How do the new entries and transfers break down by grade level?

Although the students in Grades 2 through 11 represent similar percentages of the total enrollment of each governance structure, the entries and transfers tend to cluster at specific grades resulting in different patterns within each governance structure. Figure 3 pictures each of those two sources of movement among the charter and the traditional schools, disaggregated by grade level.

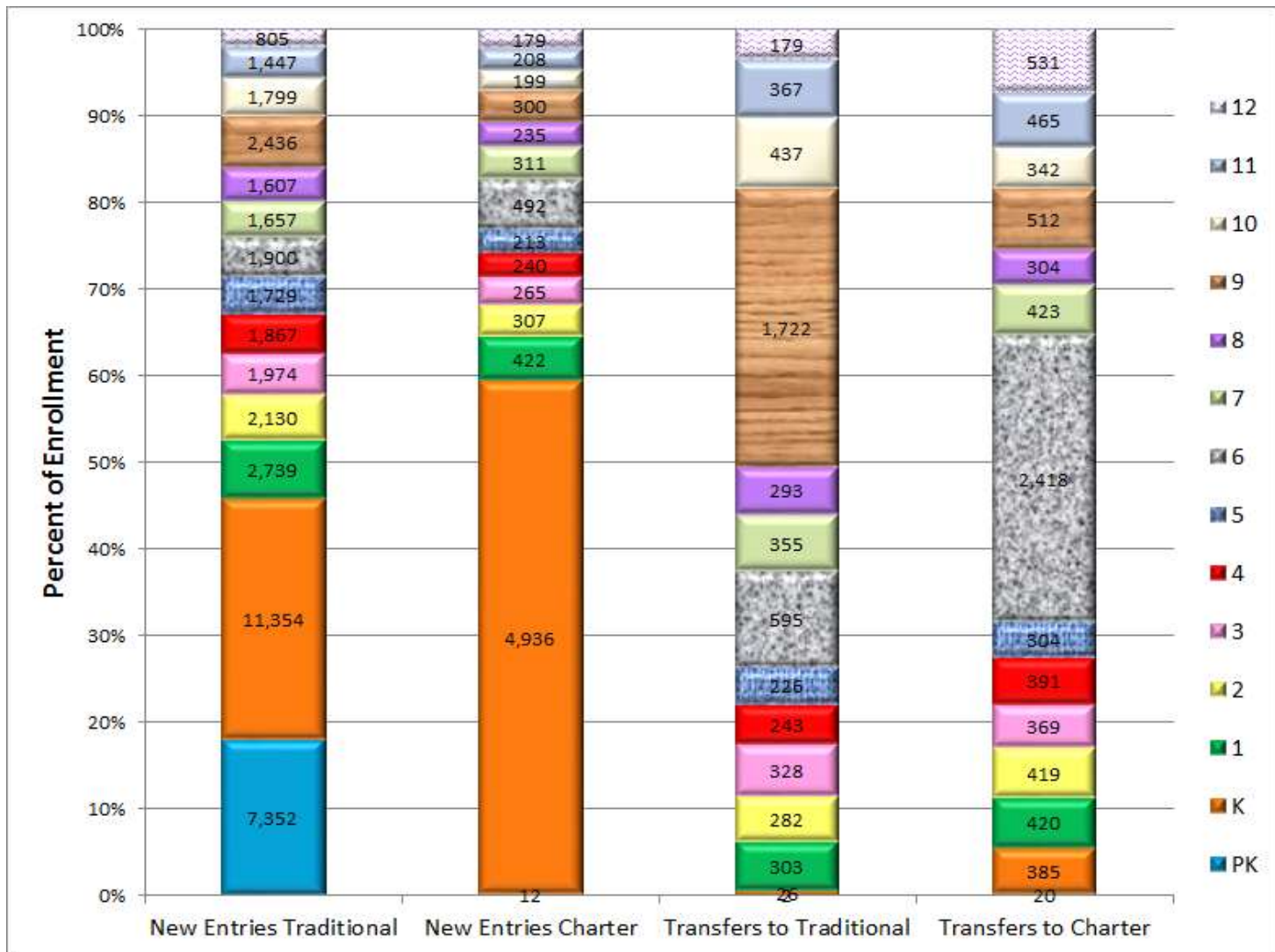


Figure 3. New entries and transfers, by grade level.

- Students in kindergarten represent a twofold greater share of the new entries to the charter schools (59.3%, n=4,936) than the traditional schools (27.8%, n=11,354) and a tenfold greater share of the transfers to the charter schools (5.3%, n=385) than the traditional schools (0.5%, n=26).
- More sixth graders (n=2,418) transferred to the charter schools from the traditional schools than at any other grade, representing 33.1% of the traditional to charter school transfers.
- High school students represent a greater share of the new entries to the traditional schools (16.0%, n=6,507) than the charter schools (10.7%, n=886), with more ninth graders (n=1,722) transferring to the traditional schools from the charters schools than at any other grade.

7. How do the new entries and transfers break down by demographic subgroup?

Figure 4 - 7 picture the new entries and transfers among the charter and the traditional schools disaggregated by selected demographic subgroups.

- **Race/Ethnic classification.**

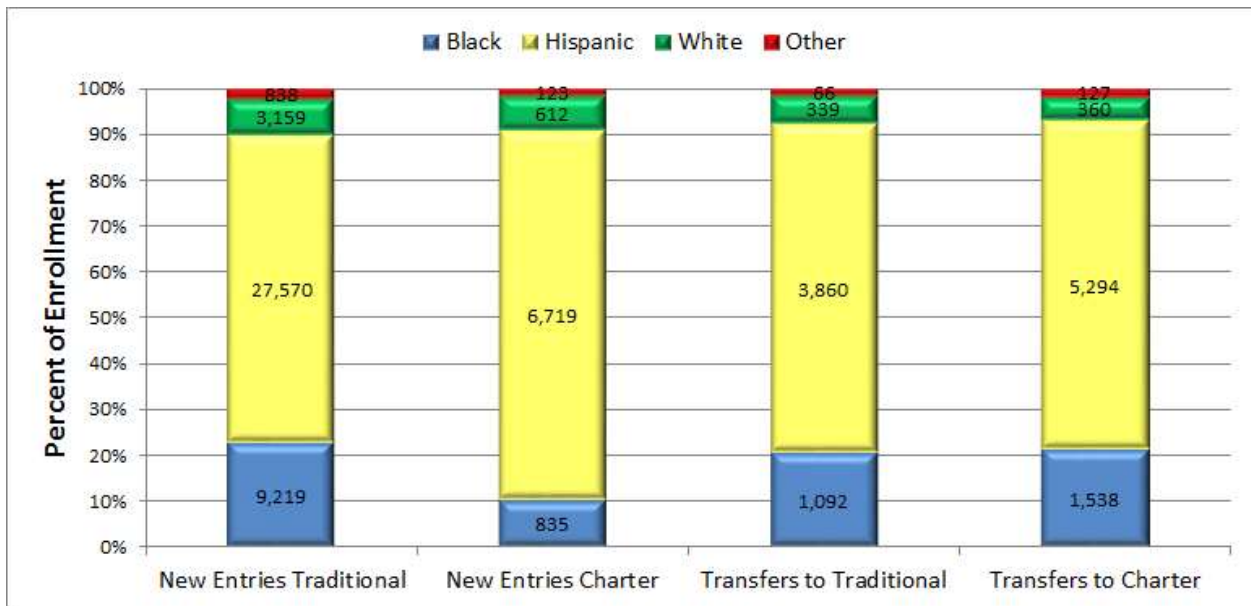


Figure 4. New entries and transfers by Race/Ethnic classification

- Hispanic students are over-represented in new entries into the charter schools, 80.8% (n=6,719), compared to the traditional schools, 67.6% (n=27,570).
- Black students are under-represented in new entries into the charter schools, 10.0% (n=835), compared to the traditional schools, 22.6% (n=9,219).

- **Free/Reduced Lunch classification**

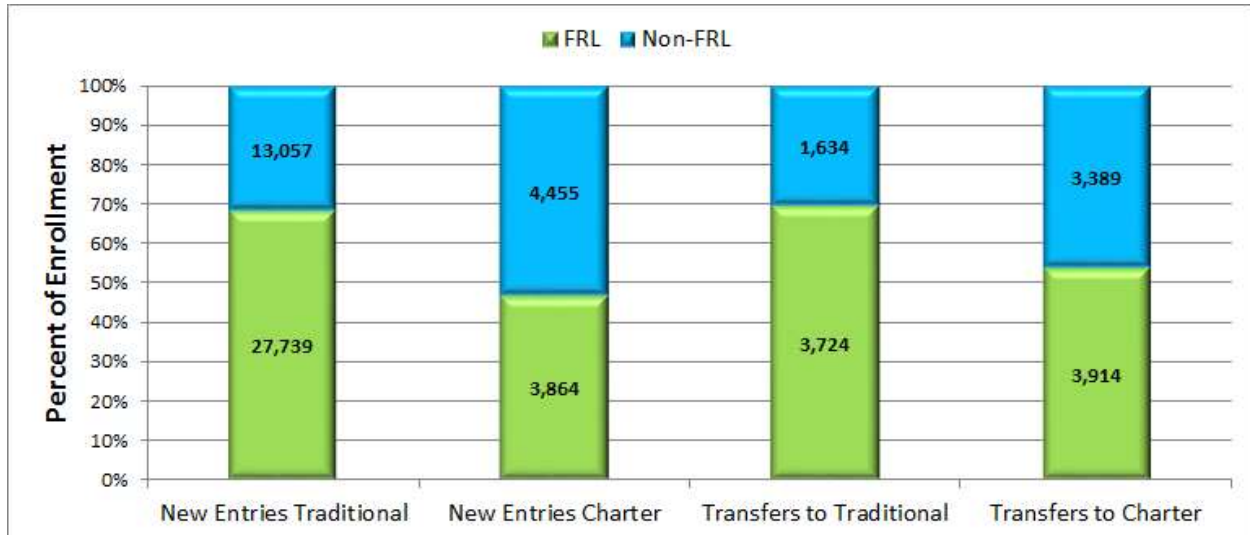


Figure 5. New entries and transfers by Free/Reduced price lunch classification

- Students who are eligible for Free/Reduced Price Lunch (FRL) are over-represented in new entries into the traditional schools at 68.0% (n=27,739) compared to the charter schools at 46.4% (n=3,864).

- English Language Learner classification

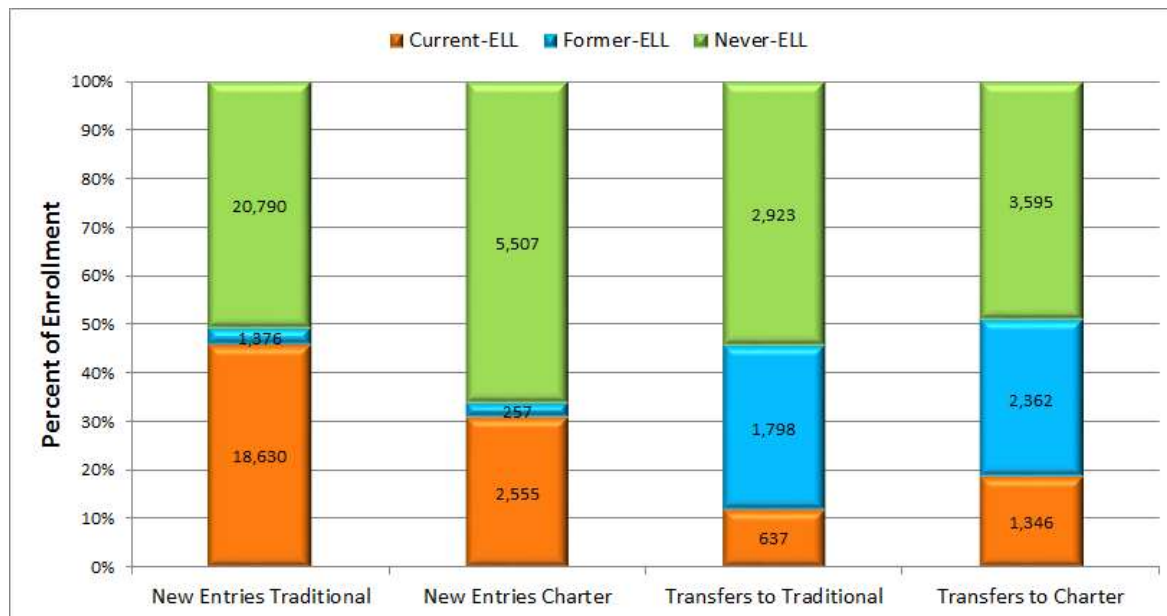


Figure 6. New entries and transfers by English Language Learner (ELL) classification

- Students classified as Current English Language Learners (Current-ELL) are over-represented in new entries to the traditional schools at 45.7% (n=18,630) compared to the charter schools at 30.7% (n=2,555).
- Students classified as Current-ELL are, however, under-represented in transfers to the traditional schools, 11.9% (n=637) compared to the charter schools at 18.4% (N=1,346).

- Special Education status

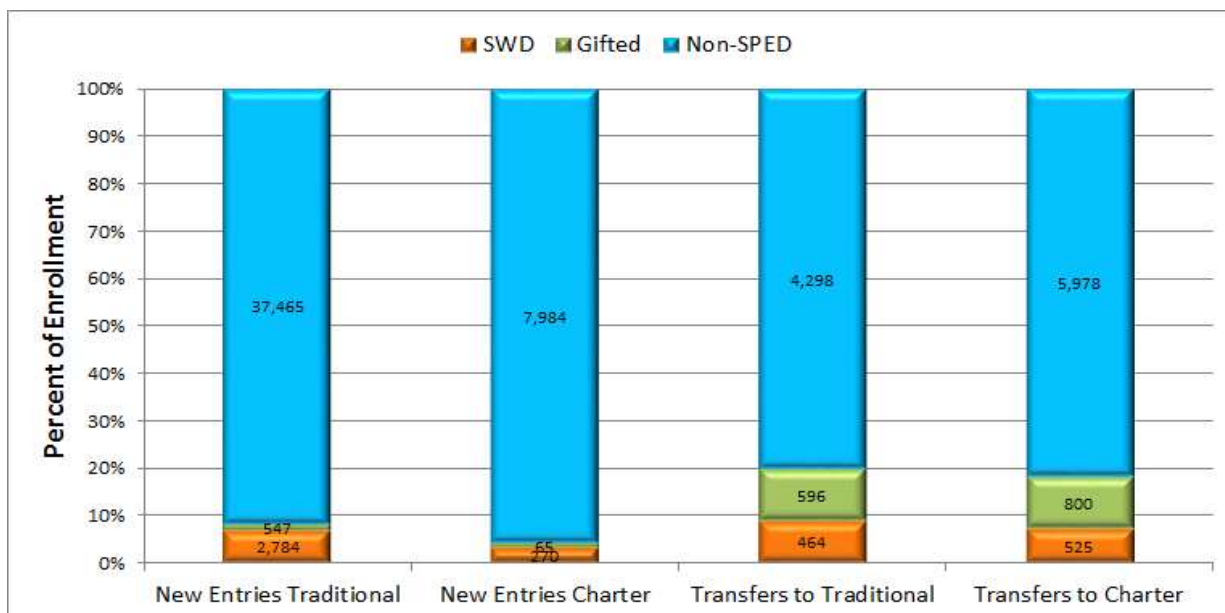


Figure 7. New entries and transfers by Special Education (SPED) status

- Students with Disabilities are over-represented in new entries into the traditional schools at 6.8% (n=2,784) compared to the charter schools at 3.7% (n=270).
- Equal percentages of gifted students transfer to the charter schools, (11.0%, n=800), and to the traditional schools (n=596).

8. How do the new entries and transfers break down by the achievement levels on the FSA/EOC?

- English/Language Arts



Figure 8. Entries and transfers by 2017 FSA/ELA achievement level

- Students who score at level 1 are over-represented in new entries to the traditional schools, 70.8% (n=2,968), compared to the charter schools, 61.3% (n=283).
- Within transfers between governance structures, the distribution of the students' achievement levels was comparable at the charter and traditional schools.

- Mathematics

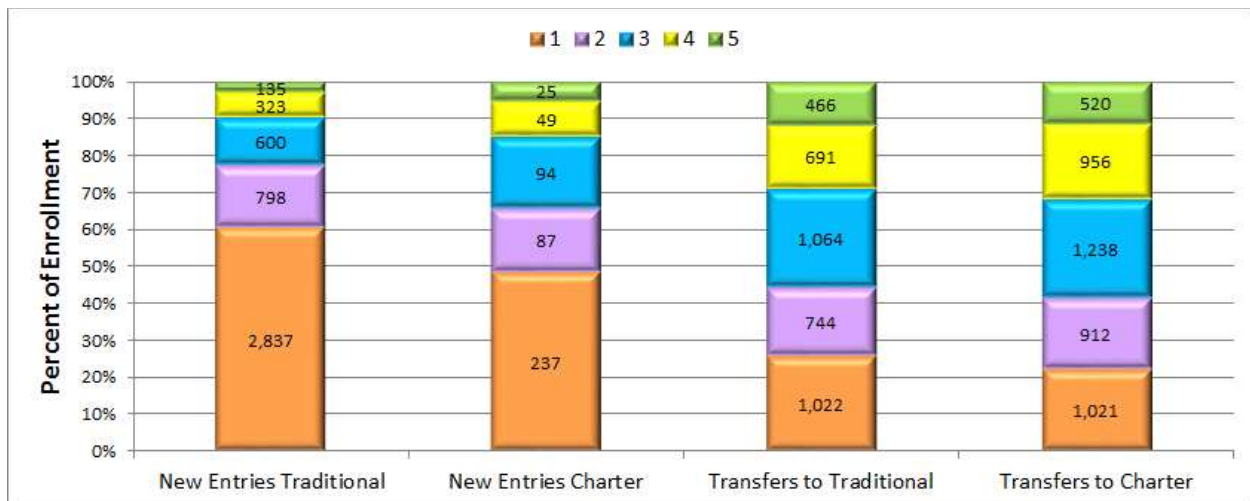


Figure 9. Entries and transfers by 2017 FSA Mathematics/Algebra 1 EOC/Geometry EOC achievement level

- Students who score at level 1 are over-represented in new entries to the traditional schools, 60.4% (n=2,837), compared to the charter schools, 48.2% (n=237).
- Students who score at levels 4 and 5 are under-represented in new entries to the traditional schools, 9.7% (n=458), compared to the charter schools, 15.0% (n=74).

9. How does enrollment at the traditional and charter schools differ by neighborhood?

Figure 10 disaggregates the October 2017 student enrollment by the in-county zip codes containing 50 or more students. The topmost bar provides districtwide numbers. Figure 11 is a map, which provides the geographic boundaries of these zip codes.

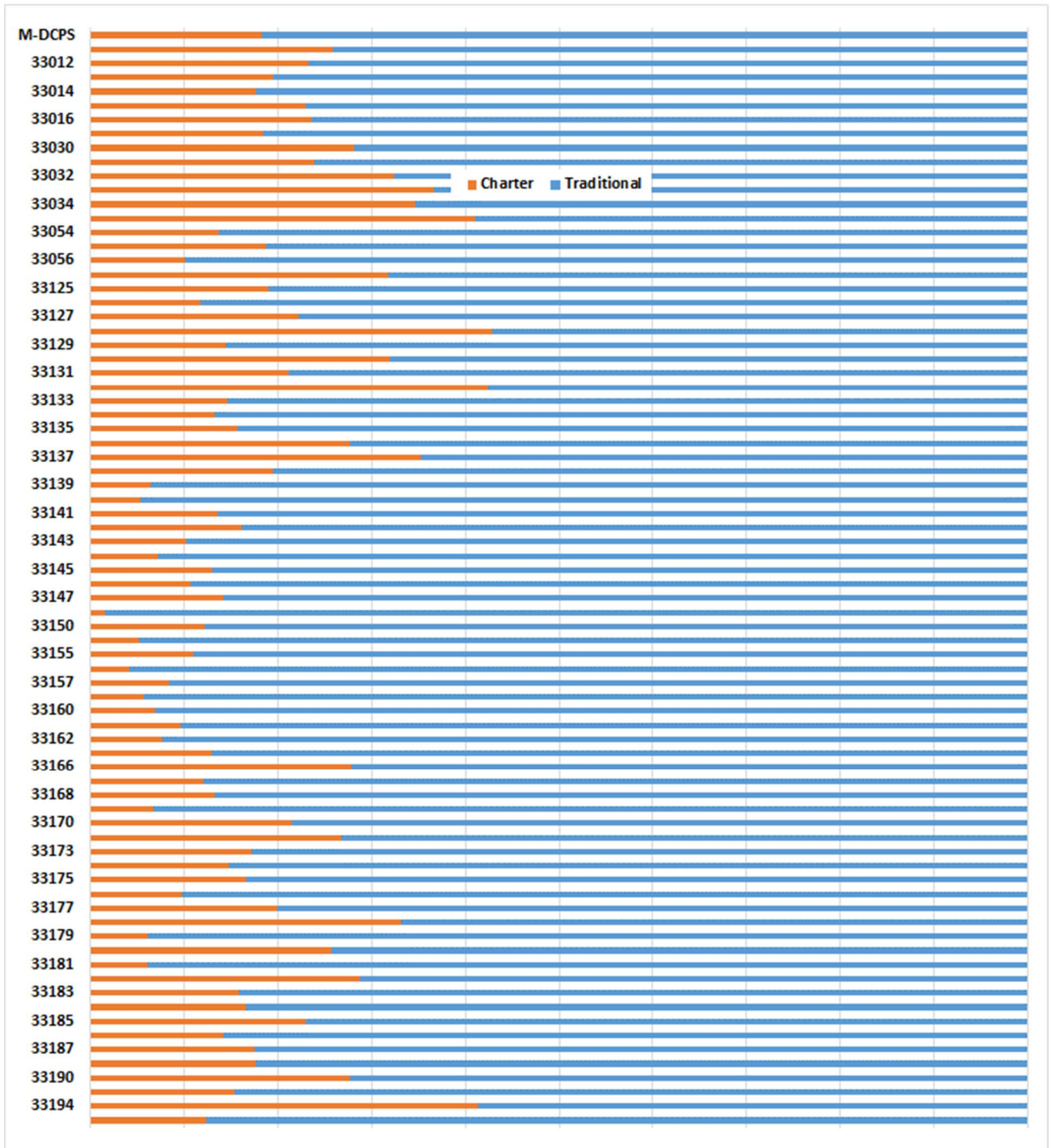


Figure 10. Enrollment at the Charter and Traditional Schools by Zip Code.

MIAMI-DADE COUNTY, FLORIDA ZIP CODE BOUNDARY

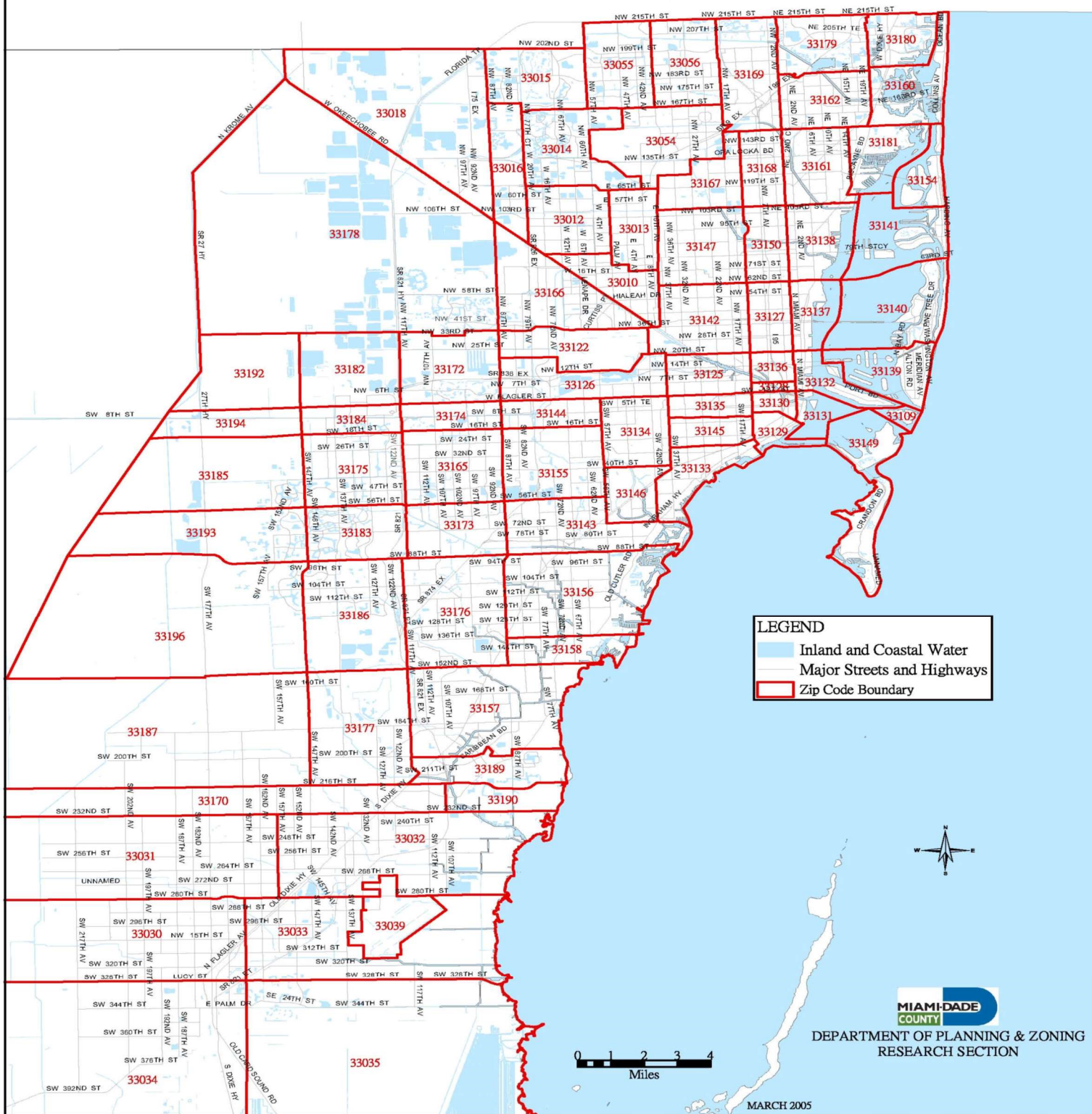


Figure 11. Map of Miami-Dade County subdivided into zip codes.

- The percentage of students who attend charter schools tends to cluster in neighborhoods and varies considerably across the county.
- The percentage of students who attend charter schools in southernmost Miami-Dade (Florida City - 33035, Homestead - 33033); East-Central Miami-Dade (Little Havana - 33128, Edgewater - 33132, Little Haiti - 33127, 33137); and East Kendall (33194) is around twice the district average of 18.2%.
- The percentage of students who attend charter schools in portions of Hialeah (33010), Aventura (33180), Cutler Bay (33190), and Doral (33166, 33172) is around 1.5 times the district average.

10. To what extent did students transfer among the traditional and charter schools, from the 2016-17 to the 2017-18 school years?

For each governance structure, Table 1 lists the total student membership followed by the number and percent of students within each governance structure who transfer within and between the structures during each month of the 2016-17 school year and the summer of 2017. For example, In August, 568 of the 278,499 students enrolled in the traditional schools (0.20%), transferred to the charter schools and 4,144 (1.49%) transferred to other traditional schools. The percentages are depicted graphically in Figure 12.

Table 1. Monthly Transfers Among Charter and Traditional Schools in the M-DCPS, 2016-17

Month	Traditional Schools					Charter Schools				
	Student Membership	Traditional to Charter		Traditional to Traditional		Student Membership	Charter to Traditional		Charter to Charter	
		n	%	n	%		n	%	n	%
August	278,499	568	0.20	4,144	1.49	59,281	396	0.67	234	0.39
September	290,657	570	0.20	2,127	0.73	61,140	254	0.42	228	0.37
October	292,650	276	0.09	1,656	0.57	61,749	189	0.31	112	0.18
November	292,882	317	0.11	1,676	0.57	61,675	214	0.35	92	0.15
December	293,053	259	0.09	1,283	0.44	61,579	171	0.28	83	0.13
January	292,388	458	0.16	1,999	0.68	61,424	254	0.41	144	0.23
February	293,625	308	0.10	1,429	0.49	61,644	167	0.27	65	0.11
March	293,756	216	0.07	1,373	0.47	61,577	150	0.24	38	0.06
April	293,643	122	0.04	650	0.22	61,300	70	0.11	25	0.04
May	293,654	69	0.02	368	0.13	61,217	52	0.08	12	0.02
June	293,212	1	0.00	65	0.02	61,114	2	0.00	0	0.00
Total	325,644	3,164	0.97	16,770	5.15	67,057	1,919	2.86	1,033	1.54
Summer	264,039	4,881	1.85	42,272	16.01	55,973	3,527	6.30	5,873	10.49

Note. Transfers are defined for this tabulation as entries into different schools within the indicated period. Entries into the same school are excluded. Students designated as graduates based on their withdrawal codes are not included in the summer membership.

- Transfers between governance structures mostly occur during the summer.
- Transfers during the regular school year are highest in August and decline thereafter, regardless of type, except for a brief spike in January.
- Transfers from traditional to charter schools represent the lowest percentage of student membership, while transfers among the traditional schools nearly always represent the highest percentage of student membership, of the four movement categories.

- Student movement from traditional to charter schools is greater in number, but much less proportionally, than student movement from the charter to the traditional schools.

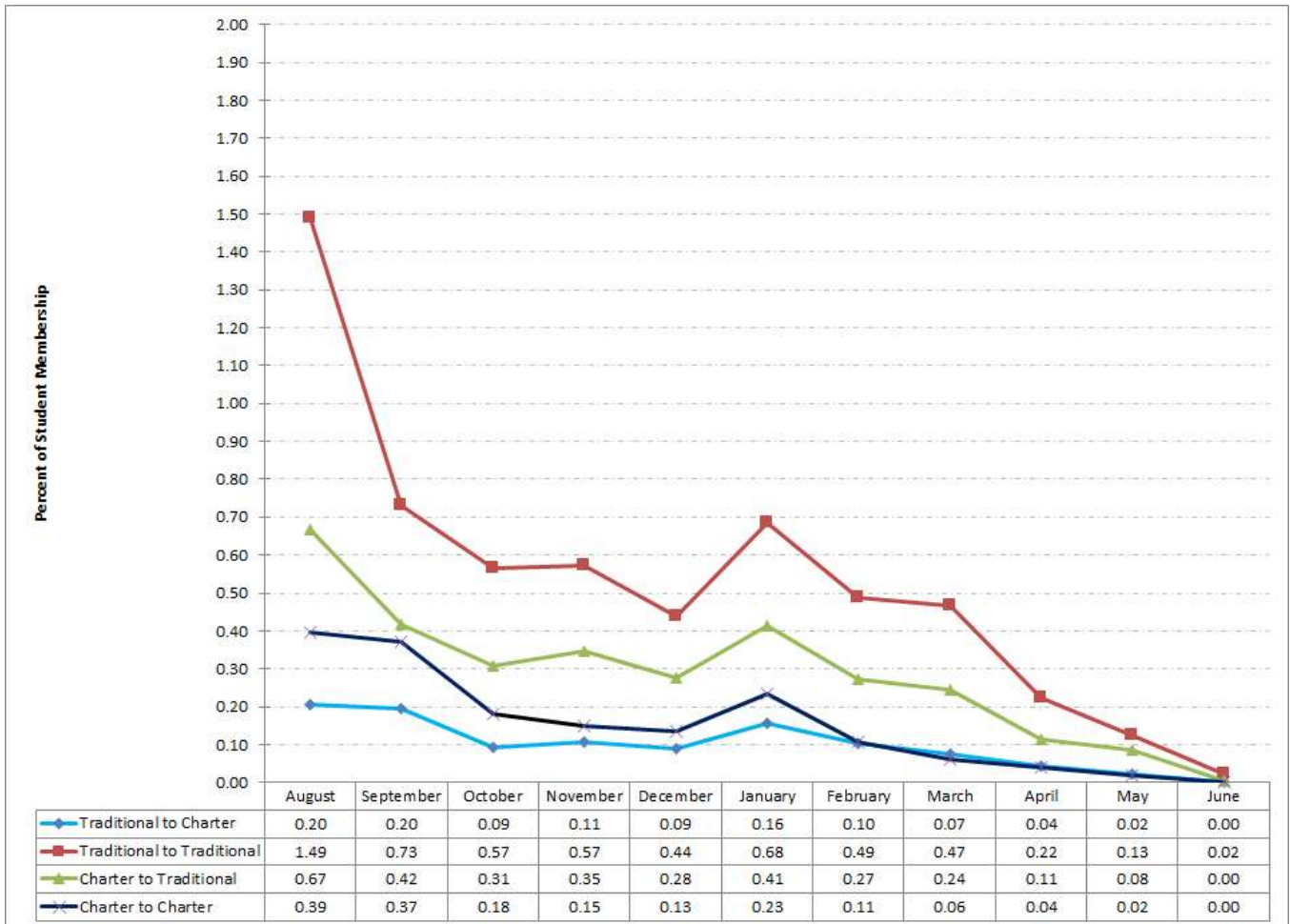


Figure 12. Monthly transfers among charter and traditional schools

11. What percentage of enrollment do traditional schools lose to charter schools on a cumulative basis?

Estimates of the **cumulative** student enrollment **lost** to the charter schools assumed that students would have otherwise attended the residence schools to which they were assigned based on established school attendance boundaries if they had not attended a charter school. Students included in this total may have transferred to charter schools at any time during the academic career or may never have attended a traditional school. Appendix Table A provides a snapshot that lists the number and percent of students attending each traditional school, those in the attendance zone who attended any charter school, and the total of the two, during October of the 2016-17 and 2017-18 school years. School wide magnet schools and schools without a resident population are excluded. Schools with the highest enrollment loss to charter schools (25th percentile) relative to the total within their grade organization are highlighted.

- As of October 2017-18, traditional middle schools lost the highest cumulative percentage of students (29.4%) to the charter schools, followed by senior high schools (17.8%), K-8 centers (16.9%), and elementary schools (15.3%).

- Cumulative enrollment loss from all grade organizations increased relative to the previous year (October 2016) with the middle schools leading at 1.4%, followed by elementary schools at 1.0% at the K-8 centers and senior high schools at 0.2%.
- Knowledge of a traditional schools' demographic characteristics allows one to predict 51.0% of the variance in the percentage enrollment lost to the charter schools.
 - More loss is predicted for middle schools and schools with higher percentages of students who are Hispanic and overage for grade.
 - Less loss is predicted for schools with higher percentages of students who are Current/Former English Language Learners and gifted.

12. What are the primary conclusions of this report?

More than one in six students in the M-DCPS currently attends a charter school, a proportion that has steadily increased since charter schools were first introduced. The exchange of students between the traditional and charter schools, when added to the new entries that go directly to charter schools, has increased the percentage of disadvantaged students, decreased the academic achievement, and decreased enrollment at the District's traditional schools. Students from private schools and first time newly entering kindergarten students comprised a much greater share of the entries to the charter schools than to the traditional schools while students from foreign sources comprised a much smaller share. The loss of students to charter schools has tended to cluster in specific neighborhoods and is most pronounced in middle schools. Transfers between governance structures are highest in August and decline thereafter (except for a brief spike in January) regardless of type, with transfers from traditional to charter school representing the smallest proportion of the student membership.

References

- Urdegar, S.M. (2017). *Review of charter schools, 2016-17*. Miami, FL: Miami-Dade County Public Schools.
- Miami International Airport (2005). *Miami-Dade County zip code map*. Retrieved October 22, 2013 from <http://www.miami-airport.com/pdfdoc/zip-codes.pdf>

Appendix Table A. Actual Enrollment at Traditional Schools and Projected Enrollment Lost to Charter Schools, 2016-17 to 2017-18

Level	Location	School	2016-17					2017-18				
			Traditional		Charter		Total	Traditional		Charter		Total
			n	%	n	%		n	%	n	%	
1 4071		AGENORIA PASCHAL/OLINDA ELE	448	92.0	39	8.0	487	425	92.0	37	8.0	462
1 1521		AMELIA EARHART ELEMENTARY	472	93.8	31	6.2	503	461	92.4	38	7.6	499
1 0341		ARCH CREEK ELEMENTARY SCH	583	96.0	24	4.0	607	562	94.3	34	5.7	596
1 0101		ARCOLA LAKE ELEMENTARY	544	91.1	53	8.9	597	504	90.8	51	9.2	555
1 0121		AUBURNDALE ELEMENTARY	854	93.1	63	6.9	917	842	92.2	71	7.8	913
1 0161		AVOCADO ELEMENTARY	441	59.0	306	41.0	747	458	61.5	287	38.5	745
1 0201		BANYAN ELEMENTARY	358	90.4	38	9.6	396	363	89.2	44	10.8	407
1 3781		BARBARA J HAWKINS ELEM	276	89.6	32	10.4	308	272	90.1	30	9.9	302
1 0261		BEL-AIRE ELEMENTARY	343	84.5	63	15.5	406	271	75.7	87	24.3	358
1 5021		BEN SHEPPARD ELEMENTARY	974	87.0	146	13.0	1,120	958	86.5	149	13.5	1,107
1 0271		BENT TREE ELEMENTARY	449	78.1	126	21.9	575	427	74.7	145	25.3	572
1 0321		BISCAYNE ELEMENTARY	744	86.1	120	13.9	864	724	85.0	128	15.0	852
1 0361		BISCAYNE GARDENS ELEMENTARY	582	92.7	46	7.3	628	528	92.1	45	7.9	573
1 0461		BRENTWOOD ELEMENTARY	583	86.9	88	13.1	671	562	87.1	83	12.9	645
1 0521		BROADMOOR ELEMENTARY	461	87.6	65	12.4	526	464	89.2	56	10.8	520
1 0641		BUNCHE PARK ELEMENTARY	382	97.0	12	3.0	394	397	94.1	25	5.9	422
1 0671		CALUSA ELEMENTARY	856	89.9	96	10.1	952	851	88.9	106	11.1	957
1 0681		CAROL CITY ELEMENTARY	415	80.4	101	19.6	516	410	84.0	78	16.0	488
1 5991		CHARLES DAVID WYCHE, JR	719	86.7	110	13.3	829	731	87.6	103	12.4	834
1 2331		CHARLES R HADLEY ELEMENTARY	987	89.0	122	11.0	1,109	917	88.3	122	11.7	1,039
1 1691		CHRISTINA M EVE ELEMENTARY	842	87.0	126	13.0	968	819	84.8	147	15.2	966
1 0801		CITRUS GROVE ELEMENTARY	933	78.5	255	21.5	1,188	893	79.0	238	21.0	1,131
1 0831		CLAUDE PEPPER ELEMENTARY	602	75.5	195	24.5	797	576	74.8	194	25.2	770
1 0841		COCONUT GROVE ELEMENTARY	470	88.2	63	11.8	533	448	88.0	61	12.0	509
1 0861		COLONIAL DRIVE ELEMENTARY	302	87.0	45	13.0	347	277	86.0	45	14.0	322
1 0881		COMSTOCK ELEMENTARY	552	78.2	154	21.8	706	471	77.1	140	22.9	611
1 1001		CORAL PARK ELEMENTARY	1,185	94.0	76	6.0	1,261	1,103	91.9	97	8.1	1,200

(table continues)

Appendix Table A, continued

Level	Location	School	2016-17				Total	2017-18				Total
			Traditional		Charter			Traditional		Charter		
			n	%	n	%		n	%	n	%	
1 1041		CORAL REEF ELEMENTARY	890	93.1	66	6.9	956	932	93.4	66	6.6	998
1 1081		CORAL TERRACE ELEMENTARY	416	89.5	49	10.5	465	407	89.6	47	10.4	454
1 1161		CRESTVIEW ELEMENTARY	410	94.9	22	5.1	432	361	93.0	27	7.0	388
1 1241		CUTLER RIDGE ELEMENTARY	543	92.2	46	7.8	589	548	92.3	46	7.7	594
1 1811		DANTE B FASCELL ELEMENTARY	519	81.6	117	18.4	636	472	80.0	118	20.0	590
1 1761		DAVID FAIRCHILD ELEMENTARY	592	94.1	37	5.9	629	575	93.0	43	7.0	618
1 5061		DR CARLOS J FINLAY ELEM	528	91.3	50	8.7	578	521	90.5	55	9.5	576
1 5981		DR EDWARD L WHIGHAM EL	805	70.0	345	30.0	1,150	755	65.0	406	35.0	1,161
1 4511		DR GILBERT L PORTER ELEM	762	80.0	191	20.0	953	739	79.0	196	21.0	935
1 0211		DR MANUEL C BARREIRO ELEM	754	77.1	224	22.9	978	754	78.3	209	21.7	963
1 4121		DR ROBERT B INGRAM ELEM	416	88.9	52	11.1	468	406	88.3	54	11.7	460
1 5081		DR. FEDERICA S. WILSON/SKY	272	85.8	45	14.2	317	247	85.5	42	14.5	289
1 5381		E W F STIRRUP ELEMENTARY	907	78.8	244	21.2	1,151	944	79.9	238	20.1	1,182
1 1561		EARLINGTON HEIGHTS ELEM	456	85.4	78	14.6	534	427	82.6	90	17.4	517
1 1641		EMERSON ELEMENTARY	372	90.5	39	9.5	411	366	88.8	46	11.2	412
1 2351		ENEIDA MASSAS HARTNER ELEM	479	75.1	159	24.9	638	455	72.9	169	27.1	624
1 0251		ETHEL KOGER BECKHAM ELEM	803	93.8	53	6.2	856	766	93.8	51	6.2	817
1 1801		FAIRLAWN ELEMENTARY	606	93.8	40	6.2	646	596	93.4	42	6.6	638
1 1841		FLAGAMI ELEMENTARY	431	96.0	18	4.0	449	404	94.6	23	5.4	427
1 1921		FLAMINGO ELEMENTARY	614	91.1	60	8.9	674	598	92.1	51	7.9	649
1 2001		FLORIDA CITY ELEMENTARY	817	64.7	446	35.3	1,263	765	64.9	414	35.1	1,179
1 5561		FRANCES S TUCKER EL	348	73.1	128	26.9	476	332	68.9	150	31.1	482
1 1361		FREDERICK DOUGLASS ELEM	184	49.6	187	50.4	371	272	63.8	154	36.2	426
1 2081		FULFORD ELEMENTARY	552	97.2	16	2.8	568	528	95.5	25	4.5	553
1 4801		G K EDELMAN/SABAL PALM ELEM	678	97.0	21	3.0	699	608	94.4	36	5.6	644
1 0721		GEORGE W CARVER ELEMENTARY	426	85.7	71	14.3	497	397	87.1	59	12.9	456
1 2021		GLORIA FLOYD ELEMENTARY	545	69.6	238	30.4	783	515	67.9	243	32.1	758
1 2161		GOLDEN GLADES ELEMENTARY	241	92.0	21	8.0	262	228	89.1	28	10.9	256

(table continues)

Appendix Table A, continued

Level	Location	School	2016-17					2017-18				
			Traditional		Charter		Total	Traditional		Charter		Total
			n	%	n	%		n	%	n	%	
1 0311		GOULDS ELEMENTARY SCHOOL	594	63.2	346	36.8	940	472	56.5	363	43.5	835
1 2241		GRATIGNY ELEMENTARY	575	88.9	72	11.1	647	537	95.4	26	4.6	563
1 2261		GREENGLADE ELEMENTARY	522	65.3	278	34.8	800	520	65.8	270	34.2	790
1 2281		GREYNOLDS PARK ELEMENTARY	772	98.6	11	1.4	783	723	95.9	31	4.1	754
1 2321		GULFSTREAM ELEMENTARY	709	94.0	45	6.0	754	706	91.5	66	8.5	772
1 4491		HENRY E S REEVES ELEMENTARY	677	92.2	57	7.8	734	556	90.3	60	9.7	616
1 1881		HENRY M FLAGLER ELEMENTARY	761	95.6	35	4.4	796	767	94.3	46	5.7	813
1 2361		HIALEAH ELEMENTARY	632	85.6	106	14.4	738	628	86.3	100	13.7	728
1 2111		HIALEAH GARDENS ELEMENTARY	942	88.0	128	12.0	1,070	991	90.1	109	9.9	1,100
1 2401		HIBISCUS ELEMENTARY	524	97.4	14	2.6	538	532	96.7	18	3.3	550
1 2501		HOLMES ELEMENTARY	522	92.1	45	7.9	567	507	91.8	45	8.2	552
1 2541		HOWARD DRIVE ELEMENTARY	615	97.3	17	2.7	632	582	97.2	17	2.8	599
1 2151		JACK D GORDON ELEM COMM	1,013	89.1	124	10.9	1,137	1,005	87.4	145	12.6	1,150
1 0481		JAMES H BRIGHT ELEMENTARY	619	89.8	70	10.2	689	603	89.5	71	10.5	674
1 3021		JESSE J MCCRARY, JR ELEM	612	89.7	70	10.3	682	547	87.7	77	12.3	624
1 2341		JOE HALL ELEMENTARY	517	69.2	230	30.8	747	473	67.7	226	32.3	699
1 2181		JOELLA GOOD ELEMENTARY	991	89.5	116	10.5	1,107	1,014	90.5	106	9.5	1,120
1 1481		JOHN G DUPUIS ELEMENTARY	544	83.4	108	16.6	652	485	80.0	121	20.0	606
1 4401		KELSEY L PHARR ELEMENTARY	356	86.2	57	13.8	413	356	85.4	61	14.6	417
1 2641		KENDALE ELEMENTARY	538	91.3	51	8.7	589	532	89.4	63	10.6	595
1 2651		KENDALE LAKES ELEMENTARY	801	86.3	127	13.7	928	790	84.3	147	15.7	937
1 2661		KENSINGTON PARK ELEMENTARY	1,088	93.1	81	6.9	1,169	1,065	92.4	87	7.6	1,152
1 2781		KINLOCH PARK ELEMENTARY	666	92.4	55	7.6	721	633	93.5	44	6.5	677
1 2801		LAKE STEVENS ELEMENTARY	287	77.2	85	22.8	372	276	78.9	74	21.1	350
1 2821		LAKEVIEW ELEMENTARY	419	97.2	12	2.8	431	419	97.4	11	2.6	430
1 2941		LAURA C SAUNDERS ELEM	594	61.1	378	38.9	972	597	60.6	388	39.4	985
1 0081		LENORA BRAYNON SMITH EL	417	84.4	77	15.6	494	431	84.8	77	15.2	508
1 2981		LIBERTY CITY ELEMENTARY	428	89.2	52	10.8	480	426	90.8	43	9.2	469

(table continues)

Appendix Table A, continued

Level	Location	School	2016-17					2017-18				
			Traditional		Charter		Total	Traditional		Charter		Total
			n	%	n	%		n	%	n	%	
13041		LORAH PARK ELEMENTARY	435	86.8	66	13.2	501	357	87.1	53	12.9	410
13061		LUDLAM ELEMENTARY	364	86.3	58	13.7	422	357	86.9	54	13.1	411
12581		MADIE IVES ELEMENTARY	646	97.9	14	2.1	660	727	94.5	42	5.5	769
15711		MAE M WALTERS ELEMENTARY	568	89.7	65	10.3	633	556	90.1	61	9.9	617
11371		MARJORY STONEMAN DOUGLAS	951	79.9	239	20.1	1,190	919	79.6	236	20.4	1,155
10111		MAYA ANGELOU ELEMENTARY	782	90.9	78	9.1	860	737	90.3	79	9.7	816
13141		MEADOWLANE ELEMENTARY	848	84.0	162	16.0	1,010	780	83.6	153	16.4	933
13181		MELROSE ELEMENTARY	650	86.2	104	13.8	754	616	85.2	107	14.8	723
13241		MIAMI GARDENS ELEMENTARY	291	88.7	37	11.3	328	277	89.9	31	10.1	308
13261		MIAMI HEIGHTS ELEMENTARY	992	70.4	417	29.6	1,409	872	62.3	527	37.7	1,399
13301		MIAMI PARK ELEMENTARY	280	87.5	40	12.5	320	289	87.8	40	12.2	329
13341		MIAMI SHORES ELEMENTARY	750	94.9	40	5.1	790	709	94.2	44	5.8	753
13381		MIAMI SPRINGS ELEMENTARY	409	79.1	108	20.9	517	378	76.1	119	23.9	497
15971		NATHAN B YOUNG ELEMENTARY	374	95.7	17	4.3	391	370	94.1	23	5.9	393
13661		NATURAL BRIDGE ELEMENTARY	706	98.1	14	1.9	720	632	97.2	18	2.8	650
13701		NORLAND ELEMENTARY	715	91.8	64	8.2	779	708	90.1	78	9.9	786
10125		NORMA BUTLER BOSSARD EL	1,209	87.2	178	12.8	1,387	1,195	87.2	176	12.8	1,371
13741		NORTH BEACH ELEMENTARY	1,068	98.8	13	1.2	1,081	1,063	98.9	12	1.1	1,075
13861		NORTH GLADE ELEMENTARY	293	75.7	94	24.3	387	264	76.1	83	23.9	347
13901		NORTH HIALEAH ELEMENTARY	525	88.5	68	11.5	593	527	88.6	68	11.4	595
13941		NORTH MIAMI ELEMENTARY	543	97.7	13	2.3	556	507	97.9	11	2.1	518
13981		NORTH TWIN LAKES ELEMENTARY	505	92.0	44	8.0	549	483	90.6	50	9.4	533
14001		NORWOOD ELEMENTARY	498	97.3	14	2.7	512	475	96.9	15	3.1	490
14021		OAK GROVE ELEMENTARY	605	95.9	26	4.1	631	576	95.4	28	4.6	604
14061		OJUS ELEMENTARY	947	97.9	20	2.1	967	886	89.5	104	10.5	990
12521		OLIVER HOOVER ELEMENTARY	753	79.4	195	20.6	948	720	79.5	186	20.5	906
14091		OLYMPIA HEIGHTS ELEMENTARY	471	86.7	72	13.3	543	445	82.1	97	17.9	542
14171		ORCHARD VILLA ELEMENTARY	441	88.4	58	11.6	499	400	87.7	56	12.3	456

(table continues)

Appendix Table A, continued

Level	Location	School	2016-17					2017-18				
			Traditional		Charter		Total	Traditional		Charter		Total
			n	%	n	%		n	%	n	%	
1 4241		PALM LAKES ELEMENTARY	704	84.7	127	15.3	831	655	84.2	123	15.8	778
1 4261		PALM SPRINGS ELEMENTARY	624	88.6	80	11.4	704	572	87.2	84	12.8	656
1 4281		PALM SPRINGS NORTH ELEM	1,027	79.5	265	20.5	1,292	1,064	80.7	254	19.3	1,318
1 4221		PALMETTO ELEMENTARY	622	97.8	14	2.2	636	620	97.8	14	2.2	634
1 4301		PARKVIEW ELEMENTARY	315	92.1	27	7.9	342	297	89.2	36	10.8	333
1 4341		PARKWAY ELEMENTARY	320	91.7	29	8.3	349	327	92.1	28	7.9	355
1 4381		PERRINE ELEMENTARY	740	95.0	39	5.0	779	720	93.3	52	6.7	772
1 5931		PHILLIS WHEATLEY ELEMENTARY	238	52.0	220	48.0	458	255	53.2	224	46.8	479
1 3431		PHYLLIS R MILLER ELEM	665	95.8	29	4.2	694	629	95.6	29	4.4	658
1 4441		PINE LAKE ELEMENTARY	469	85.1	82	14.9	551	460	81.6	104	18.4	564
1 4461		PINE VILLA ELEMENTARY	431	80.0	108	20.0	539	387	76.2	121	23.8	508
1 4421		PINECREST ELEMENTARY	1,021	98.7	13	1.3	1,034	991	99.0	10	1.0	1,001
1 4501		POINCIANA PARK ELEMENTARY	377	93.8	25	6.2	402	354	94.1	22	5.9	376
1 4541		RAINBOW PARK ELEMENTARY	390	92.6	31	7.4	421	341	90.9	34	9.1	375
1 4581		REDLAND ELEMENTARY	837	76.2	261	23.8	1,098	762	71.5	304	28.5	1,066
1 4611		REDONDO ELEMENTARY	651	72.7	245	27.3	896	626	74.3	216	25.7	842
1 4681		RIVERSIDE ELEMENTARY	1,303	62.4	785	37.6	2,088	1,237	62.2	753	37.8	1,990
1 3541		ROBERT RUSSA MOTON ELEM	316	100.0	0	0.0	316	289	98.3	5	1.7	294
1 4721		ROCKWAY ELEMENTARY	454	89.0	56	11.0	510	444	85.2	77	14.8	521
1 4741		ROYAL GREEN ELEMENTARY	557	77.8	159	22.2	716	487	71.0	199	29.0	686
1 4761		ROYAL PALM ELEMENTARY	602	90.8	61	9.2	663	575	88.9	72	11.1	647
1 4841		SANTA CLARA ELEMENTARY	604	80.5	146	19.5	750	600	78.4	165	21.6	765
1 4881		SCOTT LAKE ELEMENTARY	489	96.4	18	3.6	507	483	96.6	17	3.4	500
1 4921		SEMINOLE ELEMENTARY	599	85.6	101	14.4	700	593	84.6	108	15.4	701
1 4961		SHADOWLAWN ELEMENTARY	247	82.9	51	17.1	298	236	81.7	53	18.3	289
1 5001		SHENANDOAH ELEMENTARY	971	87.2	143	12.8	1,114	947	86.4	149	13.6	1,096
1 5041		SILVER BLUFF ELEMENTARY	520	86.7	80	13.3	600	479	85.1	84	14.9	563
1 5121		SNAPPER CREEK ELEMENTARY	490	86.1	79	13.9	569	456	84.6	83	15.4	539

(table continues)

Appendix Table A, continued

Level	Location	School	2016-17					2017-18				
			Traditional		Charter		Total	Traditional		Charter		Total
			n	%	n	%		n	%	n	%	
1 5201		SOUTH HIALEAH ELEMENTARY	1,025	90.9	102	9.1	1,127	946	89.2	115	10.8	1,061
1 5281		SOUTH MIAMI HEIGHTS ELEM	628	79.5	162	20.5	790	543	71.4	218	28.6	761
1 5091		SOUTH POINTE ELEMENTARY	582	100.0	0	0.0	582	583	99.7	2	0.3	585
1 5321		SOUTHSIDE ELEMENTARY	795	95.0	42	5.0	837	798	93.1	59	6.9	857
1 2191		SPANISH LAKE ELEMENTARY	1,647	86.3	262	13.7	1,909	1,577	85.4	269	14.6	1,846
1 5361		SPRINGVIEW ELEMENTARY	438	78.8	118	21.2	556	427	74.7	145	25.3	572
1 5401		SUNSET ELEMENTARY	1,185	99.2	10	0.8	1,195	1,178	99.2	10	0.8	1,188
1 5421		SUNSET PARK ELEMENTARY	621	80.3	152	19.7	773	599	78.4	165	21.6	764
1 5431		SWEETWATER ELEMENTARY	723	87.8	100	12.2	823	689	87.9	95	12.1	784
1 5441		SYLVANIA HEIGHTS ELEMENTARY	460	89.1	56	10.9	516	491	90.6	51	9.4	542
1 3051		TOUSSAINT L OUVERTURE ELEM	440	79.7	112	20.3	552	394	78.0	111	22.0	505
1 5481		TREASURE ISLAND ELEMENTARY	575	80.6	138	19.4	713	575	81.8	128	18.2	703
1 5521		TROPICAL ELEMENTARY	431	82.1	94	17.9	525	433	81.2	100	18.8	533
1 5601		TWIN LAKES ELEMENTARY	473	86.6	73	13.4	546	467	86.8	71	13.2	538
1 2441		V BOONE/HIGHLAND OAKS ELEM	711	97.0	22	3.0	733	654	92.0	57	8.0	711
1 0401		VAN E BLANTON ELEMENTARY	589	95.6	27	4.4	616	566	95.9	24	4.1	590
1 5641		VILLAGE GREEN ELEMENTARY	342	86.1	55	13.9	397	314	84.2	59	15.8	373
1 3111		WESLEY MATTHEWS ELEMENTARY	504	92.8	39	7.2	543	498	93.3	36	6.7	534
1 2371		WEST HIALEAH GARDENS ELEM	1,213	84.4	225	15.6	1,438	1,231	85.3	212	14.7	1,443
1 5951		WHISPERING PINES ELEMENTARY	597	93.0	45	7.0	642	543	91.3	52	8.7	595
1 0771		WILLIAM A CHAPMAN ELEM	535	76.5	164	23.5	699	521	75.3	171	24.7	692
1 2891		WILLIAM H LEHMAN ELEMENTARY	686	84.4	127	15.6	813	657	83.8	127	16.2	784
1 0561		WILLIAM J BRYAN ELEMENTARY	726	95.8	32	4.2	758	723	95.4	35	4.6	758
1 2511		ZORA NEALE HURSTON ELEM	632	54.9	519	45.1	1,151	600	54.3	505	45.7	1,105
1 9991		M-DCPS NON-CHARTER ELEMENTARIES	100,218	85.7	16,773	14.3	116,991	96,523	84.7	17,449	15.3	113,972
2 0231		AVENTURA WATERWAYS PREP CTR	2,104	76.6	642	23.4	2,746	2,132	75.4	696	24.6	2,828
2 2041		BENJAMIN FRANKLIN K-8 CNTR	559	94.3	34	5.7	593	541	95.4	26	4.6	567
2 0441		BLUE LAKES K-8	461	89.3	55	10.7	516	462	88.0	63	12.0	525

(table continues)

Appendix Table A, continued

Level	Location	School	2016-17					2017-18				
			Traditional		Charter		Total	Traditional		Charter		Total
			n	%	n	%		n	%	n	%	
2 0091		BOB GRAHAM EDUCATION CENTER	1,787	90.8	182	9.2	1,969	1,699	90.1	186	9.9	1,885
2 0451		BOWMAN ASHE/DOOLIN K-8	1,023	81.1	238	18.9	1,261	982	80.2	243	19.8	1,225
2 0651		CAMPBELL DRIVE K-8 CENTER	961	66.1	492	33.9	1,453	999	70.1	426	29.9	1,425
2 0661		CARIBBEAN K-8 CENTER	699	76.6	213	23.4	912	837	77.9	237	22.1	1,074
2 5901		CARRIE P MEEK/WESTVIEW K-8	703	95.8	31	4.2	734	716	95.5	34	4.5	750
2 1401		CHARLES R DREW ELEMENTARY	469	97.1	14	2.9	483	579	97.8	13	2.2	592
2 3621		COCONUT PALM K-8 ACADEMY	1,548	67.8	734	32.2	2,282	1,594	66.9	790	33.1	2,384
2 0961		CORAL GABLES PREP ACADEMY	926	93.7	62	6.3	988	964	91.5	90	8.5	1,054
2 1121		CORAL WAY K-8 CENTER	1,441	93.7	97	6.3	1,538	1,327	92.3	110	7.7	1,437
2 1281		CYPRESS K-8 CENTER	349	89.3	42	10.7	391	369	89.6	43	10.4	412
2 5005		DAVID LAWRENCE JR K-8 CNTR	1,635	98.1	32	1.9	1,667	1,507	96.9	48	3.1	1,555
2 1331		DEVON AIRE K-8 CENTER	1,544	93.2	112	6.8	1,656	1,496	92.6	120	7.4	1,616
2 5861		DR HENRY MACK/W LITTLE K-8	445	92.7	35	7.3	480	433	91.7	39	8.3	472
2 0122		DR ROLANDO ESPINOSA K-8 CNT	1,325	63.5	762	36.5	2,087	1,368	66.6	686	33.4	2,054
2 1601		EDISON PARK ELEMENTARY	460	92.6	37	7.4	497	482	91.6	44	8.4	526
2 5051		ERNEST R GRAHAM K-8 CENTER	1,376	88.3	182	11.7	1,558	1,333	87.5	190	12.5	1,523
2 0071		EUGENIA B THOMAS K-8 CENTER	1,678	78.1	470	21.9	2,148	1,738	80.5	422	19.5	2,160
2 1721		EVERGLADES K-8 CENTER	1,043	95.3	51	4.7	1,094	1,028	94.4	61	5.6	1,089
2 0761		FIENBERG/FISHER K-8 CENTER	891	97.5	23	2.5	914	898	97.1	27	2.9	925
2 4031		GATEWAY ENV K-8 LEARN CNTR	1,861	61.5	1,165	38.5	3,026	1,830	60.9	1,175	39.1	3,005
2 5141		HUBERT O SIBLEY K-8 CENTER	819	96.6	29	3.4	848	776	95.8	34	4.2	810
2 4391		IRVING & BEATRICE PESKOE K8	887	89.1	108	10.9	995	894	89.2	108	10.8	1,002
2 4691		JANE S ROBERTS K-8 CENTER	827	83.9	159	16.1	986	811	82.4	173	17.6	984
2 5101		JOHN I SMITH K-8 CENTER	1,724	75.5	559	24.5	2,283	1,835	76.1	575	23.9	2,410
2 2701		KENWOOD K-8 CENTER	1,098	95.0	58	5.0	1,156	1,054	93.9	69	6.1	1,123
2 2741		KEY BISCAYNE K-8 CENTER	1,275	98.9	14	1.1	1,289	1,246	98.6	18	1.4	1,264
2 2881		LEEWOOD K-8 CENTER	808	94.1	51	5.9	859	813	94.2	50	5.8	863
2 2901		LEISURE CITY K-8 CENTER	1,066	87.7	149	12.3	1,215	1,024	88.2	137	11.8	1,161

(table continues)

Appendix Table A, continued

Level	Location	School	2016-17					2017-18				
			Traditional		Charter		Total	Traditional		Charter		Total
			n	%	n	%		n	%	n	%	
2 1681		LILLIE C EVANS K-8 CENTER	405	93.8	27	6.3	432	377	92.0	33	8.0	410
2 2911		LINDA LENTIN K-8 CENTER	777	96.9	25	3.1	802	840	96.8	28	3.2	868
2 0073		MANDARIN LAKES K-8 ACADEMY	968	39.9	1,459	60.1	2,427	984	40.7	1,434	59.3	2,418
2 3421		MARCUS A MILAM K-8 CENTER	943	89.3	113	10.7	1,056	944	89.2	114	10.8	1,058
2 3281		MIAMI LAKES K-8 CENTER	1,400	96.5	51	3.5	1,451	1,279	95.7	57	4.3	1,336
2 3501		MORNINGSIDE ELEMENTARY	514	92.9	39	7.1	553	525	93.8	35	6.3	560
2 3581		MYRTLE GROVE ELEMENTARY	532	95.5	25	4.5	557	474	94.2	29	5.8	503
2 0092		NORMAN S. EDELCUP K-8	2,177	99.5	11	0.5	2,188	2,163	99.5	10	0.5	2,173
2 3821		NORTH COUNTY K-8 CENTER	427	92.2	36	7.8	463	384	90.6	40	9.4	424
2 1441		PAUL LAURENCE DUNBAR ELEM	389	56.5	299	43.5	688	363	54.8	299	45.2	662
2 0241		R K BROAD/BAY HARBOR K-8	1,385	98.3	24	1.7	1,409	1,382	98.0	28	2.0	1,410
2 5241		SOUTH MIAMI K-8 CENTER	857	92.8	66	7.2	923	779	90.7	80	9.3	859
2 5671		VINELAND K-8 CENTER	916	96.0	38	4.0	954	863	95.1	44	4.9	907
2 5791		WEST HOMESTEAD K-8 CENTER	750	66.5	378	33.5	1,128	809	70.1	345	29.9	1,154
2 5961		WINSTON PARK K-8 CENTER	1,413	92.0	123	8.0	1,536	1,423	90.8	144	9.2	1,567
2 9992		M-DCPS NON-CHARTER K-8 CENTERS	47,645	83.3	9,546	16.7	57,191	47,356	83.1	9,653	16.9	57,009
3 6023		ANDOVER MIDDLE SCHOOL	621	88.7	79	11.3	700	546	86.7	84	13.3	630
3 6021		ARVIDA MIDDLE SCHOOL	1,397	92.8	108	7.2	1,505	1,466	91.0	145	9.0	1,611
3 6031		BROWNSVILLE MIDDLE SCHOOL	486	53.6	420	46.4	906	420	48.8	441	51.2	861
3 6051		CAROL CITY MIDDLE SCHOOL	366	60.4	240	39.6	606	336	57.4	249	42.6	585
3 6091		CITRUS GROVE MIDDLE SCHOOL	804	78.6	219	21.4	1,023	757	76.2	236	23.8	993
3 6611		COUNTRY CLUB MIDDLE SCHOOL	600	51.8	559	48.2	1,159	631	53.3	552	46.7	1,183
3 6111		CUTLER BAY MIDDLE	869	56.1	681	43.9	1,550	867	53.3	761	46.7	1,628
3 6011		GEORGIA JONES-AYERS MIDDLE	435	57.4	323	42.6	758	478	56.9	362	43.1	840
3 6211		GLADES MIDDLE SCHOOL	932	82.1	203	17.9	1,135	893	80.9	211	19.1	1,104
3 6221		HAMMOCKS MIDDLE SCHOOL	934	80.0	233	20.0	1,167	852	75.3	280	24.7	1,132
3 6171		HENRY H FILER MIDDLE SCHOOL	774	67.5	372	32.5	1,146	714	68.9	323	31.1	1,037
3 6751		HIALEAH GARDENS MIDDLE	1,704	80.1	424	19.9	2,128	1,734	81.6	392	18.4	2,126

(table continues)

Appendix Table A, continued

Level	Location	School	2016-17					2017-18				
			Traditional		Charter		Total	Traditional		Charter		Total
			n	%	n	%		n	%	n	%	
3 6231		HIALEAH MIDDLE SCHOOL	804	79.1	213	20.9	1,017	842	82.4	180	17.6	1,022
3 6241		HIGHLAND OAKS MIDDLE SCHOOL	1,169	75.2	385	24.8	1,554	1,070	72.0	417	28.0	1,487
3 6251		HOMESTEAD MIDDLE SCHOOL	647	33.3	1,297	66.7	1,944	588	30.1	1,363	69.9	1,951
3 6411		HORACE MANN MIDDLE SCHOOL	641	61.6	400	38.4	1,041	629	60.4	412	39.6	1,041
3 6441		HOWARD D MCMILLAN MIDDLE	902	80.0	225	20.0	1,127	998	79.1	263	20.9	1,261
3 6301		JOHN F KENNEDY MIDDLE SCH	1,137	92.1	98	7.9	1,235	1,093	87.4	157	12.6	1,250
3 6771		JORGE MAS CANOSA MID SCHOOL	1,838	88.0	250	12.0	2,088	1,777	86.4	279	13.6	2,056
3 6361		JOSE DE DIEGO MIDDLE SCHOOL	736	47.5	813	52.5	1,549	791	49.8	796	50.2	1,587
3 6331		KINLOCH PARK MIDDLE SCHOOL	915	88.9	114	11.1	1,029	836	88.8	105	11.2	941
3 6351		LAKE STEVENS MIDDLE SCHOOL	590	69.8	255	30.2	845	574	70.3	242	29.7	816
3 6921		LAMAR LOUISE CURRY MIDDLE	1,181	78.3	328	21.7	1,509	1,219	75.9	387	24.1	1,606
3 6161		LAWTON CHILES MIDDLE SCHOOL	864	67.2	421	32.8	1,285	878	68.5	404	31.5	1,282
3 6391		MADISON MIDDLE SCHOOL	475	65.6	249	34.4	724	481	64.0	270	36.0	751
3 6501		MIAMI LAKES MIDDLE SCHOOL	1,133	70.6	471	29.4	1,604	1,266	73.6	454	26.4	1,720
3 6521		MIAMI SPRINGS MIDDLE SCHOOL	1,136	60.8	733	39.2	1,869	996	55.5	799	44.5	1,795
3 6541		NAUTILUS MIDDLE SCHOOL	1,028	78.2	287	21.8	1,315	1,066	80.9	251	19.1	1,317
3 6571		NORLAND MIDDLE SCHOOL	793	91.3	76	8.7	869	877	88.5	114	11.5	991
3 6591		NORTH DADE MIDDLE SCHOOL	585	66.6	293	33.4	878	517	62.8	306	37.2	823
3 6631		NORTH MIAMI MIDDLE SCHOOL	948	76.5	292	23.5	1,240	945	74.0	332	26.0	1,277
3 6681		PALM SPRINGS MIDDLE SCHOOL	1,060	68.3	493	31.7	1,553	1,039	67.6	497	32.4	1,536
3 6681		PALM SPRINGS MIDDLE SCHOOL	1,060	68.3	493	31.7	1,553	1,039	67.6	497	32.4	1,536
3 6701		PALMETTO MIDDLE SCHOOL	1,026	95.1	53	4.9	1,079	1,029	94.4	61	5.6	1,090
3 6041		PAUL W BELL MIDDLE SCHOOL	493	70.6	205	29.4	698	454	65.7	237	34.3	691
3 6741		PONCE DE LEON MIDDLE SCHOOL	1,227	85.2	213	14.8	1,440	1,204	84.3	225	15.7	1,429
3 6761		REDLAND MIDDLE SCHOOL	482	35.6	873	64.4	1,355	480	34.7	904	65.3	1,384
3 6781		RICHMOND HEIGHTS MIDDLE	545	75.4	178	24.6	723	508	74.1	178	25.9	686
3 6801		RIVIERA MIDDLE SCHOOL	554	79.3	145	20.7	699	517	78.0	146	22.0	663
3 6821		ROCKWAY MIDDLE SCHOOL	1,092	86.7	167	13.3	1,259	1,146	86.3	182	13.7	1,328

(table continues)

Appendix Table A, continued

Level	Location	School	2016-17					2017-18				
			Traditional		Charter		Total	Traditional		Charter		Total
			n	%	n	%		n	%	n	%	
3 6121		RUBEN DARIO MIDDLE SCHOOL	593	33.3	1,186	66.7	1,779	582	30.6	1,320	69.4	1,902
3 6841		SHENANDOAH MIDDLE SCHOOL	1,263	84.8	226	15.2	1,489	1,250	84.1	236	15.9	1,486
3 6881		SOUTH MIAMI MIDDLE SCHOOL	963	92.2	81	7.8	1,044	922	90.9	92	9.1	1,014
3 6861		SOUTHWOOD MIDDLE SCHOOL	1,485	96.3	57	3.7	1,542	1,425	95.6	65	4.4	1,490
3 6281		THOMAS JEFFERSON MIDDLE	319	57.8	233	42.2	552	320	56.0	251	44.0	571
3 6901		W R THOMAS MIDDLE SCHOOL	1,197	80.4	292	19.6	1,489	1,181	76.8	357	23.2	1,538
3 6961		WEST MIAMI MIDDLE SCHOOL	719	74.4	247	25.6	966	702	73.3	256	26.7	958
3 9993		M-DCPS NON-CHARTER MIDDLE SCHOOLS	40,462	72.0	15,710	28.0	56,172	39,896	70.6	16,574	29.4	56,470
4 7048		ALONZO & TRACY MOURNING SR	1,604	94.7	90	5.3	1,694	1,697	95.3	84	4.7	1,781
4 7011		AMERICAN SENIOR HIGH SCHOOL	2,189	71.4	875	28.6	3,064	2,126	71.0	867	29.0	2,993
4 7751		BARBARA GOLEMAN SENIOR HIGH	1,794	68.3	831	31.7	2,625	2,028	71.2	819	28.8	2,847
4 7791		BOOKER T WASHINGTON SENIOR	1,003	56.8	762	43.2	1,765	974	54.4	816	45.6	1,790
4 7071		CORAL GABLES SENIOR SCHOOL	3,423	92.0	299	8.0	3,722	3,357	92.3	279	7.7	3,636
4 6081		CUTLER BAY SENIOR HIGH SCHL	488	100.0	0	0.0	488	470	99.6	2	0.4	472
4 7141		DR MICHAEL M KROP SENIOR	2,832	96.3	110	3.7	2,942	2,697	95.2	136	4.8	2,833
4 7781		FELIX VARELA SENIOR	2,782	95.2	139	4.8	2,921	2,592	94.2	160	5.8	2,752
4 7051		G HOLMES BRADDOCK SENIOR	3,474	87.7	489	12.3	3,963	3,319	87.6	471	12.4	3,790
4 7191		HIALEAH GARDENS SENIOR HIGH	2,961	80.8	705	19.2	3,666	2,869	80.9	676	19.1	3,545
4 7111		HIALEAH SENIOR HIGH SCHOOL	2,416	77.2	715	22.8	3,131	2,265	73.8	806	26.2	3,071
4 7131		HIALEAH-MIAMI LAKES SENIOR	1,630	66.4	823	33.6	2,453	1,598	65.9	827	34.1	2,425
4 7151		HOMESTEAD SENIOR HIGH SCHL	1,883	41.9	2,611	58.1	4,494	1,962	44.0	2,501	56.0	4,463
4 7121		JOHN A FERGUSON SENIOR HIGH	4,302	94.6	245	5.4	4,547	4,399	94.0	281	6.0	4,680
4 7201		MIAMI BEACH SENIOR	2,469	93.1	184	6.9	2,653	2,415	93.0	182	7.0	2,597
4 7231		MIAMI CAROL CITY SENIOR	1,252	72.0	487	28.0	1,739	1,098	69.0	493	31.0	1,591
4 7251		MIAMI CENTRAL SENIOR	1,823	80.9	431	19.1	2,254	1,709	77.8	489	22.2	2,198
4 7271		MIAMI CORAL PARK SENIOR	2,619	80.8	623	19.2	3,242	2,543	81.1	591	18.9	3,134
4 7301		MIAMI EDISON SENIOR	794	71.6	315	28.4	1,109	729	68.0	343	32.0	1,072
4 7341		MIAMI JACKSON SENIOR	1,581	82.8	328	17.2	1,909	1,556	83.0	319	17.0	1,875

(table continues)

Appendix Table A, continued

Level	Location	School	2016-17					2017-18				
			Traditional		Charter		Total	Traditional		Charter		Total
			n	%	n	%		n	%	n	%	
4 7361		MIAMI KILLIAN SENIOR	2,052	91.6	189	8.4	2,241	1,901	91.5	177	8.5	2,078
4 7381		MIAMI NORLAND SENIOR	1,740	90.5	183	9.5	1,923	1,798	91.5	166	8.5	1,964
4 7411		MIAMI NORTHWESTERN SENIOR	1,431	82.4	305	17.6	1,736	1,511	83.6	296	16.4	1,807
4 7431		MIAMI PALMETTO SENIOR HIGH	2,645	98.6	38	1.4	2,683	2,777	98.7	38	1.3	2,815
4 7461		MIAMI SENIOR HIGH SCHOOL	2,983	89.8	337	10.2	3,320	2,935	90.3	315	9.7	3,250
4 7731		MIAMI SOUTHRIDGE SENIOR	1,959	77.4	572	22.6	2,531	1,942	78.1	545	21.9	2,487
4 7511		MIAMI SPRINGS SENIOR	1,621	80.4	394	19.6	2,015	1,625	80.8	385	19.2	2,010
4 7531		MIAMI SUNSET SENIOR	1,445	87.6	204	12.4	1,649	1,415	87.9	194	12.1	1,609
4 7541		NORTH MIAMI BEACH SENIOR	1,536	91.7	139	8.3	1,675	1,535	92.4	126	7.6	1,661
4 7591		NORTH MIAMI SENIOR	2,523	85.1	442	14.9	2,965	2,458	85.0	435	15.0	2,893
4 7241		RONALD W REAGAN/DORAL SR	2,360	75.9	748	24.1	3,108	2,539	76.5	780	23.5	3,319
4 7701		SOUTH DADE SENIOR HIGH SCHL	3,090	82.0	676	18.0	3,766	3,001	82.2	651	17.8	3,652
4 7721		SOUTH MIAMI SENIOR	2,142	91.1	210	8.9	2,352	2,120	91.9	187	8.1	2,307
4 7741		SOUTHWEST MIAMI SENIOR HIGH	2,825	93.6	193	6.4	3,018	2,618	93.4	184	6.6	2,802
4 7049		WESTLAND HIALEAH SR	1,875	82.1	410	17.9	2,285	1,756	79.1	463	20.9	2,219
4 9994		M-DCPS SENIOR HIGH SCHOOLS	75,546	82.4	16,102	17.6	91,648	74,334	82.2	16,084	17.8	90,418

Note. The "Total" counts shown in the eighth and thirteenth columns of the table are obtained by adding the actual student population of the school (shown in the fourth and ninth columns of the table) to the estimated number of students lost to the charter schools (shown in the fifth and tenth columns of the table), to estimate the total number of students in the attendance zone of the school at the time of the October student membership counts. Highlighted schools are those that had the greatest enrollment loss (top 25th percentile) in their grade organization during 2017-18. Only traditional public schools, with assigned residence students, and without a school wide magnet program are included. Traditional school counts are based on actual October full time equivalent student membership. Charter counts are projected based on residence school data provided by the department of transportation.