

# 35 YEARS

*of*



# CHAMPIONING HISPANIC SUCCESS IN HIGHER EDUCATION



HACU

HISPANIC  
ASSOCIATION  
OF COLLEGES &  
UNIVERSITIES

# 2021 ANNUAL REPORT

# CONTENTS

	<b>About HACU</b>	<b>2</b>
	<b>HACU Governing Board</b>	<b>3</b>
	<b>Corporate and Philanthropic Council</b>	<b>4</b>
	<b>Message from the President/CEO and Chair of the Board</b>	<b>5</b>
	<b>Strengthening Our Voice in Numbers/Membership</b>	<b>7</b>
	<b>Advocating for Hispanic Higher Education</b>	<b>9</b>
	<b>Preparing the Next Generation of Higher Education Leaders</b>	<b>11</b>
	<b>Opening Doors to a Diverse Workforce/HACU National Internship Program</b>	<b>13</b>
	<b>Investing in College Students</b>	<b>15</b>
	<b>Increasing the Understanding of Hispanic Higher Education</b>	<b>16</b>
	<b>National Capitol Forum on Hispanic Higher Education</b>	<b>16</b>
	<b>Pre/Post Conference Virtual Events</b>	<b>17</b>
	<b>Annual Conference</b>	<b>18</b>
	<b>Annual Conference Sponsors and Partners</b>	<b>19</b>
	<b>Honoring Champions of Hispanic Higher Education Success/HACU Awards</b>	<b>20</b>
	<b>La HACHE de HACU/Donors</b>	<b>21</b>
	<b>Financials</b>	<b>22</b>
	<b>HACU Membership</b>	<b>23</b>
	<b>National Member Institutions</b>	<b>23</b>
	<b>International Member Institutions</b>	<b>27</b>
	<b>Hispanic-Serving School District Affiliates</b>	<b>27</b>
	<b>Educational Affiliates</b>	<b>28</b>
	<b>Faculty and Staff Affiliates</b>	<b>28</b>
	<b>Student Affiliates</b>	<b>29</b>
	<b>Trustee Affiliates</b>	<b>29</b>
	<b>2022/23 Calendar of Events</b>	<b>30</b>



# ABOUT HACU

For more than 35 years, the mission of the Hispanic Association of Colleges and Universities has been to Champion Hispanic Success in Higher Education. HACU fulfills its mission by promoting the development of member colleges and universities; improving access to and the quality of postsecondary educational opportunities for Hispanic students; and meeting the needs of business, industry and government through the development and sharing of resources, information and expertise.

HACU is the only organization that represents existing and emerging Hispanic-Serving Institutions (HSIs). HSIs today represent 18 percent of all institutions of higher education that enroll 66 percent of Hispanic undergraduates.

HACU serves its membership through advocacy, conferences, partnerships and educational programs, and offers scholarships and internship opportunities for students.

HACU is a nonprofit 501(c)(3) association with a membership of more than 500 colleges and universities in the United States, Washington, D.C., Puerto Rico, Latin America, Spain, and includes U.S. school districts. HACU's headquarters are in San Antonio, Texas with regional offices in Washington, D.C., and Sacramento, California.



# 2021-22 HACU GOVERNING BOARD



**Sue Henderson, Chair**  
President  
New Jersey City University  
Jersey City, N.J.



**Mike Flores, Vice-Chair**  
Chancellor  
Alamo Colleges District  
San Antonio, Texas



**Margaret Venable, Secretary**  
President  
Dalton State College  
Dalton, Ga.



**Emma Grace Hernández Flores, Treasurer**  
President  
Universidad de Iberoamérica  
San José, Costa Rica



**Juan Muñoz, Substitute for Past-Chair**  
Chancellor  
University of California, Merced  
Merced, Calif.



**Michael D. Amiridis**  
Chancellor  
University of Illinois Chicago  
Chicago, Ill.



**Adela de la Torre**  
President  
San Diego State University  
San Diego, Calif.



**Howard Gillman**  
Chancellor  
University of California, Irvine  
Irvine, Calif.



**Olga Hugelmeyer**  
Superintendent of Schools  
Elizabeth Public Schools  
Elizabeth, N.J.



**Devorah Lieberman**  
President  
University of La Verne  
La Verne, Calif.



**Cesar Maldonado**  
Chancellor  
Houston Community College  
Houston, Texas



**Brad Mortensen**  
President  
Weber State University  
Ogden, Utah



**Greg Peterson**  
President  
Chandler-Gilbert Community College  
Chandler, Ariz.



**Garnett S. Stokes**  
President  
The University of New Mexico  
Albuquerque, N.M.



**Andrew Sund**  
President  
Heritage University  
Toppenish, Wash.



**Luke Visconti**  
Chairman and Founder  
DiversityInc  
West Palm Beach, Fla.



**Federico Zaragoza**  
President  
College of Southern Nevada  
Las Vegas, Nev.



Ex-Officio:  
**Antonio R. Flores**  
President and CEO  
HACU



# CORPORATE AND PHILANTHROPIC COUNCIL

**Joe Mella, Chair**

Vice President  
Finance Division  
Goldman Sachs

**Jorge Caballero, Vice Chair**

Senior Partner - Retired  
Deloitte Tax LLP

**Marcus Cole**

Director  
Future Housing Leaders Program  
Fannie Mae

**Kayla Garcia**

Director, Community Affairs  
Molson Coors Beverage Company

**LaQuenta Jacobs**

Chief Diversity Officer  
XPO Logistics, Inc

**Laura Marquez**

Global Lead  
Diversity, Equity and Inclusion Policy  
Google

**Michael Nettles**

Senior Vice President  
Policy Evaluation and Research  
Educational Testing Service

**Laura Nieto**

Director, Community Outreach  
Southwest Airlines

**David Ortiz**

Diversity & Inclusion Strategist  
Disability Inclusion Program Manager  
Oracle

**Raul Villarreal**

Area Manager  
General Motors

**Luke Visconti**

Founder and Chairman  
DiversityInc



# MESSAGE FROM THE PRESIDENT/CEO AND CHAIR OF THE GOVERNING BOARD



**Antonio R. Flores**  
HACU President and CEO

In 2021, the Hispanic Association of Colleges and Universities reached a milestone year of its founding in San Antonio, Texas in 1986. While we could not gather to celebrate the 35<sup>th</sup> anniversary of the Association due to the COVID-19 pandemic, we wish to acknowledge all the support of the countless individuals, member institutions, partner organizations and supporters who have made it possible to advance educational success for Hispanic-Serving Institutions and the students they serve. Even under these rapidly changing conditions during the pandemic, which have often required imagination and ingenuity to conduct our work, we held programs and events successfully. We thank everyone for their commitment and dedication to the advancement of Hispanic higher education success.

In 2021, HACU membership totaled 488 institutions and collectively represented 35 states, the District of Columbia, Puerto Rico, and nine countries in Latin America and Europe. HACU members also included 18 Hispanic-Serving School District (HSSD) affiliates in 10 states.

HACU's advocacy work continued to push for funding and expansion opportunities for HSIs, and the results show advances in equity that are a substantial start to achieving parity. We have been busy advocating with notable success for increased funding for Hispanic-Serving Institutions (HSIs), new HSI-related authorizing legislation, and key programs such as enhanced Pell Grant awards, student debt reduction, and others affecting higher education.



**Sue Henderson**  
Governing Board Chair  
President, New Jersey City University  
Jersey City, N.J.

The Leadership Academy/La Academia de Liderazgo welcomed its third cohort of 25 fellows, selected for this program designed to address the underrepresentation of Hispanics in executive and senior-level positions in higher education. The third cohort is expected to complete the program in summer 2022. The program has provided training to 75 Fellows over the past three years.

HACU's student programs continued to provide leadership development for college students and networking opportunities with employers at events such as the Emerging Leaders Summit, hosted at Texas A&M University–San Antonio and College of Southern Nevada. The Google Hispanic Student Leadership Summit was again held virtually with over 1,000 students participating from across the country. Programs for high school students included virtual HACU/American Student Assistance Ascending Leaders Forums in partnership with CSU San Bernardino, Queens College and New Jersey City University, which welcomed 800 high school students from local school districts.

The SWA ¡Lánzate!/Take Off! Travel Award Program offered by HACU and Southwest Airlines provided 172 college students from 79 higher education institutions round-trip air travel. These travel awards help defray travel costs and keep the students connected with their families while in college.



A total of \$608,000 in academic scholarships and leadership awards from HACU partners were provided to students at HACU-member institutions. Awarded ¡Adelante! Leadership Institute scholarships were supported by HACU, Miller Coors and other sponsors. Among the recipients were 43 undergraduate students selected to serve as HACU ambassadors as part of the HACU Leader-in-Residence program.

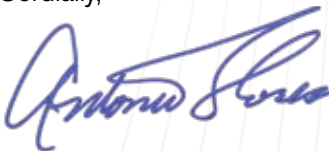
Our flagship student program, the HACU National Internship Program, placed an annual total of 479 college students in internships at federal agencies, with 117 of those in field positions and the remainder in Washington, D.C. Over 309 of the internships took place virtually.

HACU's 26<sup>th</sup> National Capitol Forum on Hispanic higher education, held virtually, brought together 411 participants on April 13-14, 2021, to learn about HSI priorities, receive legislative updates and to advocate for equitable funding support for HSIs. The Forum culminated with participants visiting with their members of Congress in a virtual format.

HACU's 35<sup>th</sup> Annual Conference was held virtually, Oct. 26-27, 2021, and drew more than 1,703 participants. The regular lineup of pre-and post-conference events were also offered. HACU recognized Salme Harju Steinberg, Ph.D., president emerita of Northeastern Illinois University; and Frank Reyes, trustee of the San Bernardino Community College District, as inductees to HACU's Hall of Champions, as well as other honorees featured on page 19.

We are fortunate to count on the dedication and vision of HACU's Governing Board members and would like to thank all past and present board members for their support. HACU extends its sincere thanks to members completing their terms and for all their contributions during their service to the board: Monte E. Pérez, former president of Los Angeles Mission College, Félix V. Matos Rodríguez, chancellor of The City University of New York, and Joe Mella, vice president of Finance Division, Goldman Sachs.

Cordially,



Antonio R. Flores  
HACU President and CEO

HACU Governing Board officers are as follows: Chair Sue Henderson, president of New Jersey City University; Vice-Chair Mike Flores, chancellor of Alamo Colleges District; Secretary Margaret Venable, president of Dalton State College; Treasurer Emma Grace Hernández Flores, president of Universidad de Iberoamérica; and Substitute for Past-Chair Juan Muñoz, chancellor of the University of California, Merced.

New Governing Board members include Devorah Lieberman, Ph.D., president of the University of La Verne; Cesar Maldonado, Ph.D., chancellor of Houston Community College; Brad L. Mortensen, Ph.D., president of Weber State University; and Luke Visconti, founder and chairperson of DiversityInc.

Our sincere gratitude to HACU's Corporate and Philanthropic Council for all their support. We also thank the individuals and organizations, whose support has made it possible for HACU to advance the cause of Hispanic higher education success in 2021 and beyond. Thank you to donors of La HACHE de HACU, the Hispanic Alliance to Champion Higher Education, for their contributions to our annual appeal.

As we move forward beyond our 35<sup>th</sup> anniversary milestone, we are optimistic as we plan for future generations of students with the development of a National Innovation Center for Hispanic Education to serve as the new physical headquarters, and to house the Association's program activities and initiatives alongside key strategic institutes. We hope you can join us by supporting and contributing to an effort that will increase the capacity of HACU to expand and develop programs and policy focused on increasing opportunities for students, staff and faculty at HSIs across the country.

Please help us make Hispanic student access and success a priority by spreading the word on your campuses and throughout your networks about HACU's programs and initiatives. Together we are building the future of America.



Sue Henderson  
HACU Governing Board, Chair  
President, New Jersey City University

# STRENGTHENING OUR VOICES IN NUMBERS

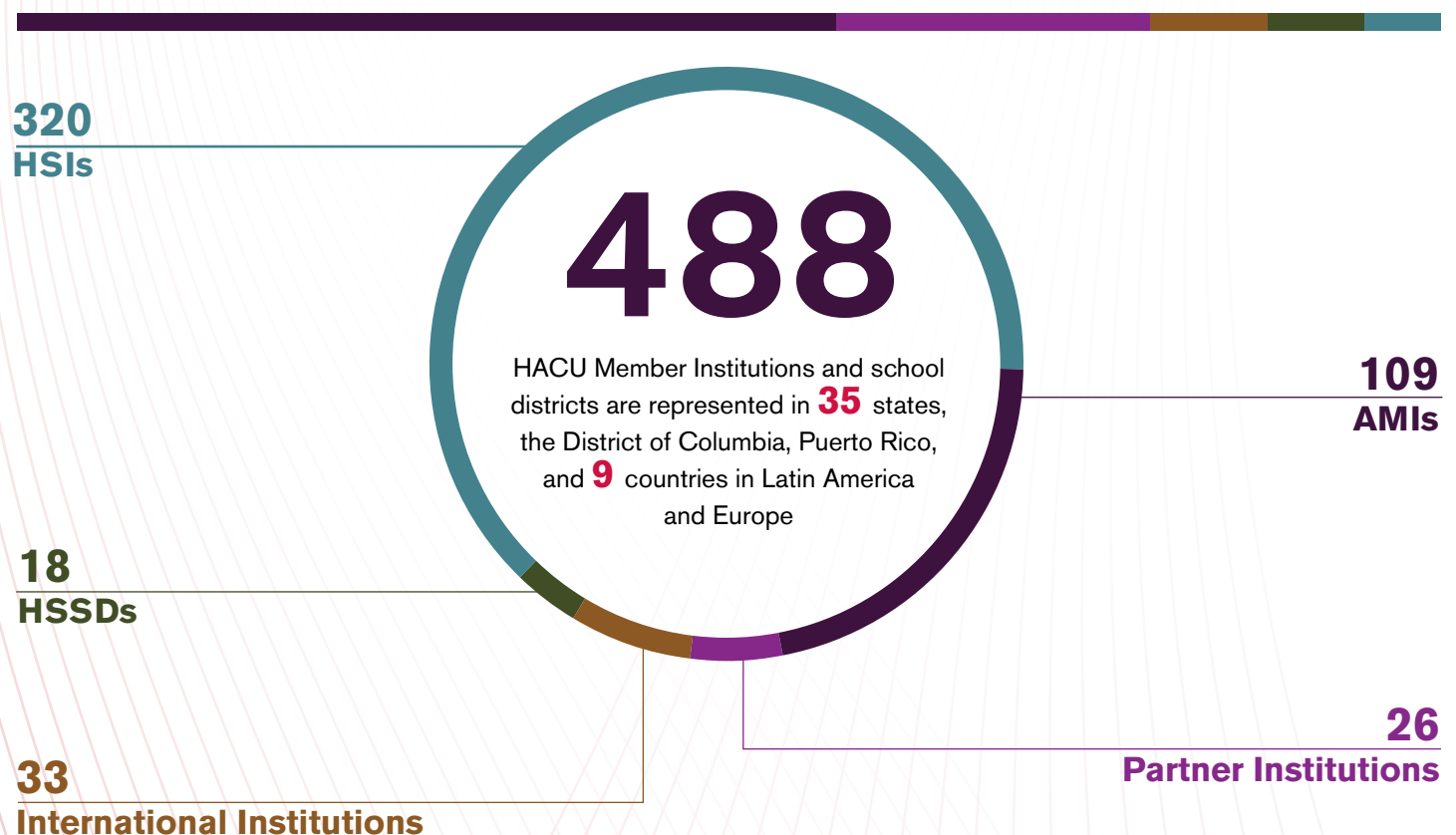
Institutions across the nation and abroad continue to recognize the importance of HACU’s mission to champion Hispanic success in higher education. HACU members are committed to improving access to and the quality of postsecondary educational opportunities.

## HACU Membership

HACU’s strength and support continues to grow, and in 2021, members included 488 colleges, universities and school districts located in 35 states, the District of Columbia, Puerto Rico, and nine countries in Latin America and Europe.

Among the total members, new members included: 40 colleges and universities, two Hispanic-Serving School Districts, 15 faculty and staff affiliate members, and seven student affiliates.

Total membership by category included: 320 Hispanic-Serving Institutions; 109 Associate Member Institutions (AMIs); 26 Partner Institutions; 33 International Institutions; 18 Hispanic-Serving School Districts (HSSDs); six Educational Affiliates; 41 Faculty and Staff Affiliates; three Trustee Affiliates; and 11 Student Affiliates.

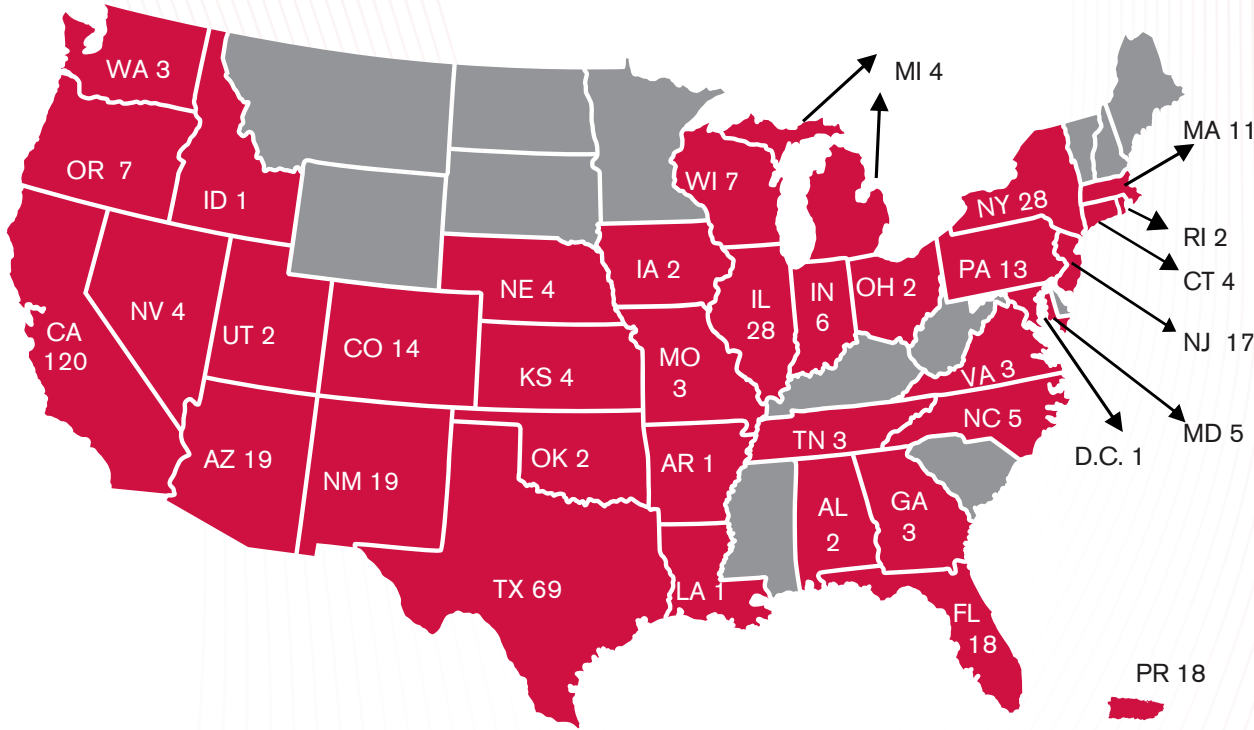




# HACU MEMBERS ACROSS THE NATION AND BEYOND

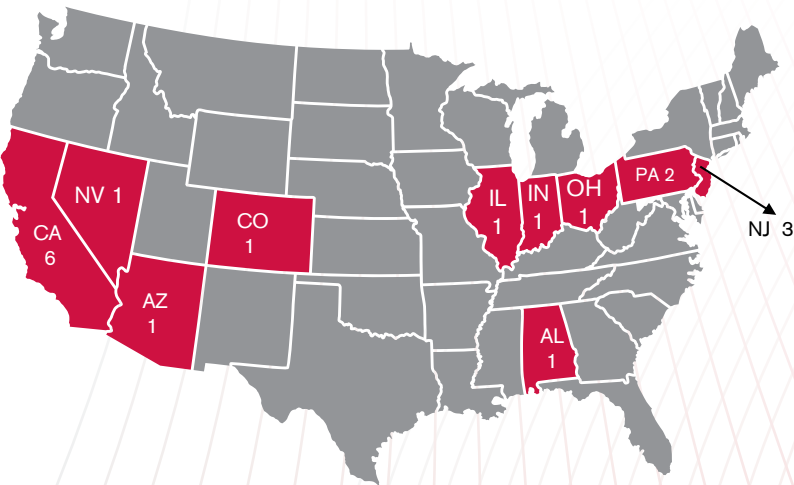
### NATIONAL MEMBER INSTITUTIONS

455 HACU National Member Institutions located in 35 states, Puerto Rico, and the District of Columbia



### HISPANIC-SERVING SCHOOL DISTRICTS

18 HACU HSSD Affiliates located in 10 states



### INTERNATIONAL INSTITUTIONS

28 HACU International Institutions located in 9 countries in Latin America and Europe



# ADVOCATING FOR HISPANIC HIGHER EDUCATION

**Since the first federal definition of Hispanic-Serving Institutions (HSIs) in 1992, HACU's advocacy efforts have produced significantly increased funding for HSIs and Hispanic higher education. Advocating for federal funding for HSIs and issues on Hispanic education remains a central focus.**

Strategic alliances with other minority-serving organizations continue to be significant in promoting a legislative agenda for higher education. Through alliances with minority-serving, higher education and other national Hispanic organizations, there has been increased awareness and recognition of HSI needs by Congress and the Administration. HACU regularly collaborates with our sister organizations including UNCF, NAFEO, AIHEC and the Asian Pacific American Advocates.

HACU's online Advocacy Center at [hacu.advocates.net](http://hacu.advocates.net) has been an effective and convenient tool for education advocates to make their collective voices heard on public policy issues affecting HSIs and emerging HSIs and has facilitated communication with lawmakers and their staff. The Advocacy Center has more than 1,600 active members is a repository for important policy information, periodic policy updates about HACU's advocacy efforts, calls to action and virtual webinars.

HACU remains an active partner with the Washington Higher Education Secretariat, the National Hispanic Leadership Agenda, the Hispanic Education Coalition, the Alliance for Equity in Higher Education, the Committee for Education Funding, the Coalition for Teaching Quality, the National English Learner Roundtable, the Higher Education Task Force and other national organizations with a focus on education.

Advocacy efforts addressed key pieces of legislation, including a focus on ensuring equitable funding in the 2022 Fiscal Year Appropriations and multiple relief packages. There is an ongoing effort to reintroduce the Hispanic Education Resources and Empowerment (HERE) Act with Congressman Joaquin Castro, which would create a new part under Title V of the HEA for a new grant program to support collaboration between HSIs, Emerging HSIs, Predominantly Minority-Serving School Districts (PMSSDs) and emerging PMSSDs for greater student success.

Staff are currently working with Congress and the Administration to secure the introduction and passage of a new HSI Capital Financing Proposal. The proposal would establish a low-to-no-interest Capital Financing Program for HSIs as part of the upcoming Higher Education Act (HEA) reauthorization with a goal of providing low-cost capital to finance improvements to the infrastructure of the nation's HSIs.

HACU monitored and responded to other legislative proposals introduced in the House of Representatives and the Senate by promoting specific legislative language favorable to HSIs and the Hispanic community. These included issues related to immigration reform and the Dream Act, as well as bills ensuring access and success for the students we serve.







HACU's advocacy in 2021 led Congress to make unprecedented investments for HSIs in Fiscal Year 2022. The amounts below represent the highest totals ever, except for Title V, Part B.

In the FY 2022 Federal funding bill, Congress continued its investments in HSIs.

U.S. Department of Education – Title V, Part A  
(DHSI Program – Undergraduate)  
\$182.85 million.

FY 2021 funding was \$148.73 million. This is an increase of \$34.12 million.

U.S. Department of Education – Title V, Part B  
(PPOHA Program – Graduate)  
\$19.66 million.

FY 2021 funding was \$13.85 million. This is an increase of \$5.81 million.

U.S. Department of Agriculture – NIFA  
(HSI Education Grants)  
\$14 million.

FY 2021 funding was \$12.5 million. This is an increase of \$1.5 million.

National Science Foundation's HSI Program  
\$48.5 million.

FY 2021 funding was \$46.5 million. This is an increase of \$2 million.

## State Advocacy

HACU's Western Regional advocacy efforts for member institutions in Arizona, California, Nevada, Oregon and Washington continue to focus on increasing state level investments in higher education. The Association also supported higher education legislation in the region's state legislatures, including their respective DREAM Acts, student financial aid bills and other college access legislation. HACU continued policy meetings with its California membership to develop policy proposals.

The HACU Advocacy Center has more than 1,600 active members. Stay up-to-date with policy updates about HACU's advocacy efforts and calls to action. Sign up at [www.hacuvadvocates.net](http://www.hacuvadvocates.net)

# PREPARING THE NEXT GENERATION OF HIGHER EDUCATION LEADERS

**Increasing Hispanic representation in higher education's presidential and leadership positions is crucial to keep pace with the unprecedented growth of U.S. Hispanic college student enrollment. The Leadership Academy/La Academia de Liderazgo seeks to increase the number of talented individuals who aspire to leadership positions at Hispanic-Serving Institutions and Emerging HSIs.**

HACU welcomed the third cohort of its Leadership Academy/La Academia de Liderazgo with 25 Fellows in 2021. Fellows have participated in an array of development activities preparing them for leadership roles in the full spectrum of institutions of higher learning with an emphasis on HSIs and Emerging HSIs.

The orientation webinar and the first two seminars were held virtually, in conjunction with HACU's Annual Conference, "35 Years of Championing Hispanic Higher Education Success." The second seminar took place along with HACU's Annual Capitol Forum on Hispanic Higher Education in April 2022. The third seminar will include a focus on international collaboration. The Fellows continue their program through summer 2022.

More than a dozen nationally recognized current and emeriti presidents and senior-level administrators serve as Academy faculty. Mentorship with a university president is a key component, as well as the development of a special project designed to have an impact at the Fellow's current institution.

HACU is grateful to the sponsoring institutions and to the American Federation of Teachers, who provided an AFT scholarship\* again this year for one Fellow to participate in the program.

## The Fellows and their home institutions are:

Alamo Colleges District  
**Ruth Dalrymple**

Caldwell University  
**Crystal López\***

California State University, Bakersfield  
**James L. Rodríguez, Ph.D.**

Cañada College  
**Manuel Alejandro Pérez, Ed.D.**

Central New Mexico Community College  
**Philip Lister, Ph.D.**

Central New Mexico Community College  
**Melanie D. Viramontes**

Cypress College  
**Yanet G. Padilla**

Cypress College  
**AnnMarie Ruelas**

Cypress College  
**Gisela Verduzco**

Dallas College Mountain View Campus  
**Esteban Sosa**

Dallas College Cedar Valley Campus  
**Maya Thomas Fernández, Ed.D.**

Kean University  
**Carlos L. Nazario**

Kean University  
**Carlos E. Rodriguez**

Loras College  
**Sergio Pérez**

Mesa Community College  
**Nora Amavisca Reyes, Ed.D.**

New Jersey City University  
**Andrés Acebo, J.D.**

Palo Alto College  
**Erron González**

Texas A&M University  
**Luz E. Herrera, J.D.**

Texas A&M University System  
**John E. Hurtado, Ph.D.**

The City College of New York  
**Vanessa K. Valdés, Ph.D.**

The University of Tennessee at Chattanooga  
**Nikolasa Tejero, DMA**

The University of Texas at San Antonio  
**Juan Manuel Sánchez, Ph.D.**

University of California, Davis  
**Luis Carvajal-Carmona, Ph.D.**

University of Pittsburgh  
**Ariel Carlos Armony, Ph.D.**

Utah Valley University  
**Yudi Lewis**





HACU staff and 2019-20 Inaugural Fellows

# SOMOS LA ACADEMIA

**W**e're proud of the fellows of our Leadership Academy /La Academia de Liderazgo. As the only Association that represents Hispanic-Serving Institutions, we believe it's part of our mission to help prepare the next generation of diverse leaders in higher education to ensure students have a diverse community at their college campuses.

Learn more at [hacu.net/leadershipacademy](https://hacu.net/leadershipacademy)



**HACU**  
H I S P A N I C  
A S S O C I A T I O N  
O F C O L L E G E S &  
U N I V E R S I T I E S

## Congratulations 2020-2021 Fellows

Cynthia Aguilar  
Mindy Suzanne Andino, Ed.D.  
Gerardo N. Arellano, Ph.D.  
Gabriela Castañeda, Ed.D.  
Antonio Delgado, Ed.D.  
Viridiana Diaz, Ed.D.  
Dolores Durán-Cerda, Ph.D.  
Maria C. Escobar-Lemmon, Ph.D.  
Lydia Falbo, DNP  
Michelle Ferrez, Ed.D.  
Rhonda M. Gonzales, Ph.D.  
John Morán González, Ph.D.  
Blanca E. Jara  
Araceli Lepe Moreno  
Dania Matos, J.D.  
Virginia Meléndez, Ed.D.  
Edwin Murillo, Ph.D.  
Lorena Oropeza, Ph.D.  
Amalia V. Pallares, Ph.D.  
Rubén D. Parra, Ph.D.  
Marisa E. Pierce, Ed.D.  
Pamela Anne Quiroz, Ph.D.  
Cynthia Ramos  
Steven M. Salcido  
José L. Santos, Ph.D.  
Mario S. Torres, Jr., Ph.D.

# OPENING DOORS TO A DIVERSE WORKFORCE

**HACU is dedicated to increasing Hispanic employment in the federal workforce and corporate America, a demographic which remains underrepresented in these sectors.**

Since 1992, the HACU National Internship Program has provided college students the opportunity to gain career experience while completing their undergraduate and graduate education.

In 2021, HACU placed students in 479 paid federal internship assignments. The total number of internship placements by semester were: 163 interns for the spring; 195 interns in the summer; and 121 interns in the fall.

Students served in 53 federal internships in the Washington, D.C., area at 117 federal field offices throughout the United States, and 309 virtual internships.

Approximately 214 of total interns were Hispanic students. Women made up more than half of participants with a total of 302. The median grade point average of all interns was 3.5 and the average age was 25.

Interns represented colleges and universities from 25 states, Puerto Rico and the District of Columbia. The locations with the highest concentration of students participating were from Maryland (98), Texas (67), California (67), Georgia (24), and Florida (34).

To date, the HACU National Internship Program has made more than 14,146 internship placements and has served as a pipeline for Hispanics to careers in the federal government and private sector.

**163 Spring Interns**

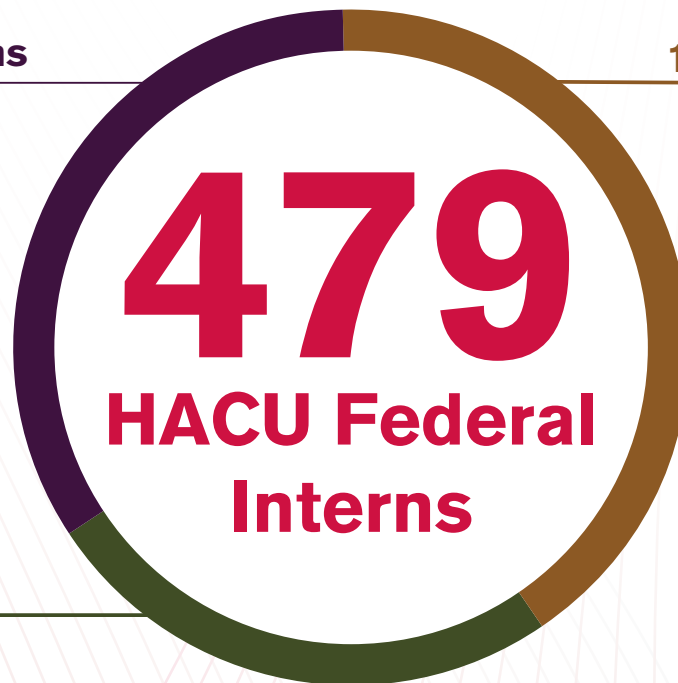
**34%**

**195 Summer Interns**

**40%**

**121 Fall Interns**

**25%**







## Federal Partners/Sponsors

**Federal Deposit Insurance Corporation**  
**Federal Reserve Board**  
**Library of Congress**  
**National Credit Union Administration**  
**National Institutes of Health**  
**National Oceanic Atmospheric Administration**  
**National Science Foundation**  
**Pension Benefit Guaranty Corporation**  
**U.S. Agency for International Development**  
**U.S. Department of Agriculture**  
 Agricultural Research Service  
 Animal and Plant Health Inspection Service  
 Food and Nutrition Service  
 Forest Service  
 National Agricultural Statistics Service  
 National Institute of Food and Agriculture  
 Office of the Assistant Secretary for Civil Rights  
**U.S. Department of Commerce**  
**U.S. Department of Health and Human Services**  
 Centers for Disease Control  
 Food and Drug Administration  
 Substance Abuse & Mental Health Services  
 Administration  
**U.S. Department of the Interior**  
**U.S. Department of the Treasury**  
**U.S. Securities and Exchange Commission**

## Corporate Internships

HACU's National Internship Program also offers college students opportunities to work at corporations nationwide. Students who participate in HACU's ¡Adelante! Leadership Institute and the regional Emerging Leaders Summits are among those selected by corporations for internships and full-time positions. These corporate partnership/sponsorship opportunities are intended to increase the overall hiring of students.

### Participating Corporations

**2U**  
**Anthem**  
**AWS Academy**  
**Beam Suntory**  
**Corteva Agriscience**  
**Deloitte**  
**Dominion Energy**  
**Endeavor**  
**Fannie Mae-Future Housing Leaders**  
**Google**  
**JLL**  
**Molson Coors**  
**PetSmart**  
**UTA**  
**Workday**

Many students who have benefited from the internship program and other HACU student programs now give back to HACU by serving as a resource through the HACU Alumni Association. Programs such as the HACU Alumni Ambassadors Program and the HACU Leader-in-Residence Program provide additional support and information to prospective applicants.

**In 2022, the HACU National Internship Program will celebrate its 30-year milestone anniversary of opening doors of opportunity for college students nationwide, serving as a pipeline for Hispanics to careers in the federal government and private sector. Visit [www.hacu.net/hnip](http://www.hacu.net/hnip).**

# INVESTING IN COLLEGE STUDENTS

**Restoring America as the first in the world in college graduation rates begins with working with students from high school to college to ensure they have the educational and financial resources needed to pursue and complete their higher education goals.**

## HACU Scholarship Program

HACU corporate partners awarded 194 scholarships totaling \$608,000 to students at HACU-member institutions. Academic scholarships were made possible by: Apple, Café Bustelo, Coca-Cola, Deloitte, Denny's, Interfaith Youth Core, Kellogg's, Kia Motors America, Inc., Miller Lite, Oracle, Sherwin Williams and United Talent Agency.

## HACU Emerging Leaders' Summit

HACU hosted two virtual Emerging Leaders' Summits designed to offer career development workshops for students. On Feb. 26, 2021, HACU and Texas A&M University–San Antonio brought together 79 students from HACU-member institutions within the state of Texas. Students were from various majors, including business, communications, liberal arts and STEM fields. Participating partners included: Corteva Agriscience, Future Housing Leaders, GM Financial, Oracle, PetSmart and XPO Logistics.

HACU and the College of Southern Nevada partnered for an Emerging Leaders' Summit on Sept. 16, 2021. College students from HACU-member institutions in Arizona, Idaho, Nevada, Oregon, Utah and Washington were among the participants. A total of 35 students participated and represented business, communications, liberal arts and STEM majors. Corporate and federal partners included: 2U, Deloitte, FAA, JLL, and Molson Coors.

## Hispanic Student Leadership Summit

Google hosted the Hispanic Student Leadership Virtual Summit "The Power of Resilience," on April 24, 2021. HACU and Google were able to engage with over 1,000 college students from across the nation. Over the summer, Google delivered personalized virtual content to all of the applicants while also crafting a community for 100 select attendees through internal mentorship programs led by Google's Employee Resource Group HOLA. Individualized resume reviews from Googlers were also offered, as well as a Discord community for students to share resources and further develop their own Latinx+ Tech community.

## HACU/ASA Ascending Leaders Forum

HACU and American Student Assistance hosted three Ascending Leaders Forum virtually with over 800 total participants taking part in the three events. The Forums, designed to increase awareness and promote diversity in staff and senior leadership positions at colleges and universities, were held in partnership with three institutions. California State University San Bernardino held a virtual Forum with high schools from San Bernardino City Unified School District on Dec. 3, 2021. Queens College held a HACU/ASA Ascending Leaders Forum on Dec. 6, 2021, for local high schools and charter schools. New Jersey City University held a Forum on Dec. 10, 2021, bringing together high school students from the tristate area.

## HACU/Southwest iLanzate! Travel Awards Program

In 2021, 172 college students from 79 colleges and universities received round-trip air travel through Southwest Airlines, as part of the SWA iLanzate!/Take Off! Travel Award Program. The program which began in 2005 is designed to help Hispanic college students stay connected with their family during the school year.

## HACU Leader-in-Residence Program

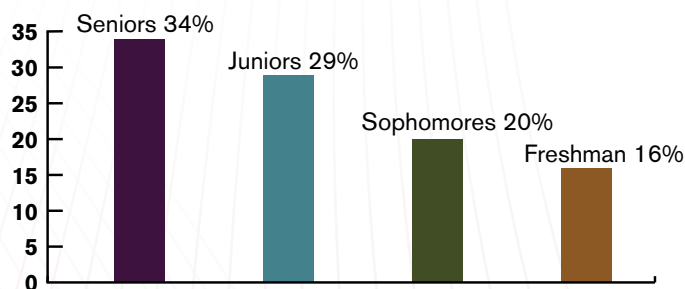
In 2021, 43 undergraduate students representing 37 HACU-member institutions were selected to serve as HACU ambassadors. These students create awareness of HACU by conducting a presentation on their campus, promoting programs via social media, and participating in monthly webinars with HACU student services staff. Deans and/or faculty advisors met with students twice per semester to discuss their goals and project implementation. Leaders received a conference sponsorship to attend the iAdelante! Leadership Institute at the HACU Annual Conference, where they met and networked with other students and professionals.

## HACU iAdelante! Leadership Institute Scholarships

College students were awarded sponsorships to attend the iAdelante! Leadership Institute held virtually in Oct. 2021. A challenge was issued by HACU President and CEO Antonio R. Flores to presidents and chancellors of HACU-member institutions to sponsor a minimum of five students to participate in the Institute. Presidents and Chancellors responded to the challenge and sponsored hundreds of students to participate in this leadership and professional development event.

## 2021 HACU iAdelante! Leadership Institute (Student Track)

The following data represents the survey responses of 481 of the 535 students that attended.





# INCREASING THE UNDERSTANDING OF HISPANIC HIGHER EDUCATION

## National Capitol Forum on Hispanic Higher Education

HACU's 26th National Capitol Forum on Hispanic Higher Education brought together 411 participants for preconference workshops and 235 individuals for the virtual event, April 13-14, 2021. The Capitol Forum serves as an opportunity to advocate for federal legislation and support for Hispanic higher education. A total of 165 participants from HACU-member institutions in 28 states met with key members of the U.S. House of Representatives, Senate and their staff via teleconference calls and virtual congressional meetings.

## HACU 26th National Capitol Forum sponsors

### Congressional Sponsor

Educational Testing Service

### The Official Airline of HACU's 26th National Capitol Forum

Southwest Airlines

### Partner

All of Us Research Program

### Grant Award

HACU was awarded a \$2 million grant from Google to launch the Grow with Google Hispanic Serving Institutions Career Readiness Program in partnership with 35 member institutions. This program is designed to train 200,000 students with digital skills to enhance employment prospects by 2025.



# PRE- AND POST-CONFERENCE VIRTUAL EVENTS

## PreK-12/Higher Education Collaboration Symposium

The Seventh Annual Pre-K-12 Symposium on Oct. 21 drew 48 participants to the one-day event. The pre-conference event offered panel discussions on the topics: “Using Research and Policy to Address Inequities in Education,” “Creating Diverse Teacher Pipelines,” and “Addressing Inequities through Outside Collaboration.”

### Sponsor

American Federation of Teachers

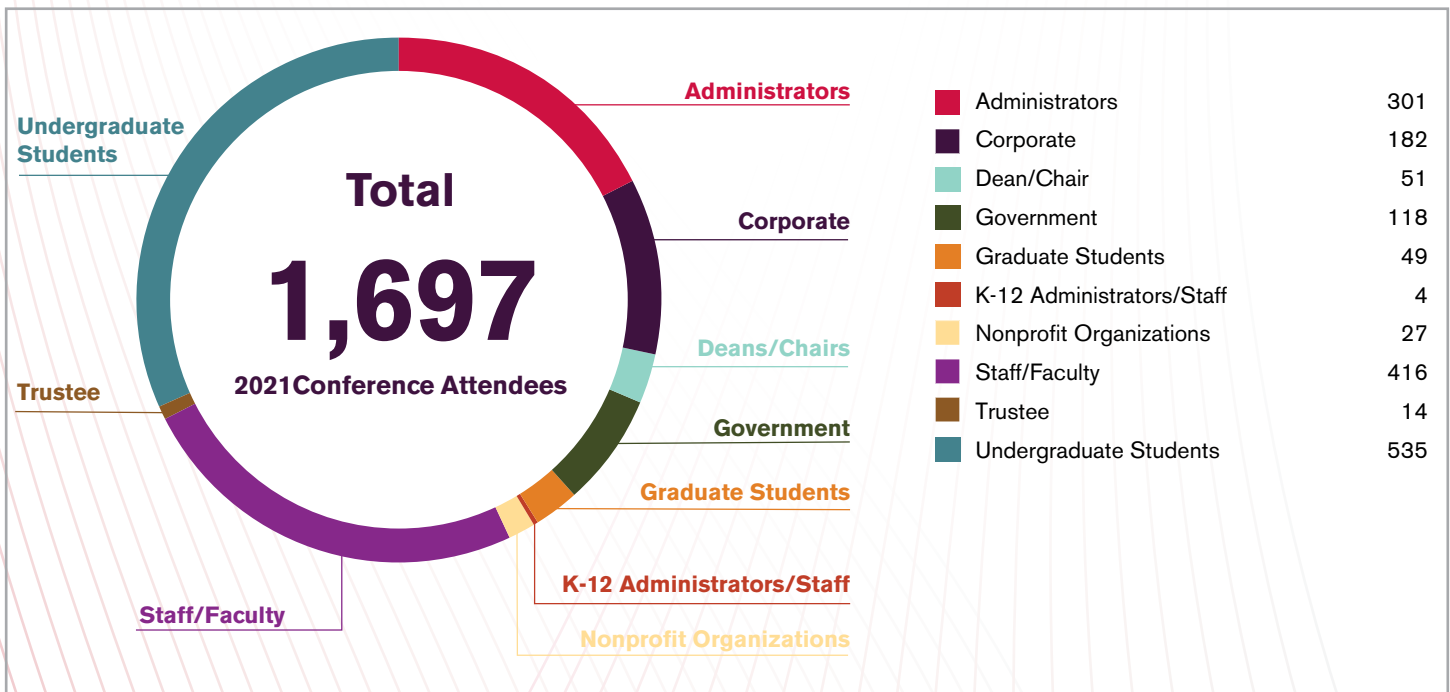
## Latino Higher Education Leadership Institute

The 20th Annual Latino Higher Education Leadership Institute on Oct. 20 drew 112 participants to the one-day event. Panelists discussed the theme “Leadership in a Time of Adversity.” The Institute, designed to provide a forum for emerging higher education leaders, included presentations and workshops to discuss challenges and explore strategies for making higher education institutions more responsive to the educational needs of Latinos and other underrepresented groups. A presidents’ panel was offered as part of this pre-conference event.

## Deans’ Forum on Hispanic Higher Education

The 10th Annual Deans’ Forum on Hispanic Higher Education on Oct. 28 included 67 participants. Panelists discussed the theme “From Hispanic-Serving to Hispanic Thriving: A Blueprint for Success.” The event was offered as a post-conference event of HACU’s Annual Conference.

## Annual Conference At-Glance Attendee Breakdown





# HACU'S PREMIER CONFERENCE ON HISPANIC HIGHER EDUCATION

## HACU Annual Conference

HACU's 35<sup>th</sup> Annual Conference, under the theme "35 Years of Championing Hispanic Higher Education Success," brought together a total of 1703 attendees virtually on Oct. 26-27, 2021. A total of 536 participants were undergraduate students taking part in HACU's ¡Adelante! Leadership Institute, the student track of HACU's Annual Conference.

The Annual Conference featured 54 workshops on a wide range of topics related to the conference theme, and a variety focused on Hispanic-Serving Institutions. The ¡Adelante! Leadership Institute offered students an array of career and leadership development workshops.

Conference attendees included representatives from colleges and universities, school districts, public policy organizations, and government, corporate and philanthropic sectors.



# 35<sup>th</sup> ANNUAL CONFERENCE SPONSORS AND PARTNERS

## Title Sponsor

USDA

## Gold Partners/Sponsors

2U  
All of Us  
Anthem  
AWS Academy  
Beam Suntory  
CIA  
Corteva Agriscience  
Deloitte  
Dominion Energy  
Endeavor  
Federal Aviation Administration  
Fannie Mae – Future Housing Leaders  
Google  
JLL  
Molson Coors/Miller Lite  
PetSmart  
Southwest Airlines, The Official Airlines of HACU's 35<sup>th</sup>  
Annual Conference  
USACC  
UTA  
Workday

## Silver Sponsors

The Coca-Cola Company

## Bronze Sponsors

Coyote  
PCOM Georgia  
Salesforce

## Media Partners

Diverse Issues In Higher Education  
DiversityComm, Inc.  
HigherEdJobs.com  
Insight Into Diversity  
Latina Style Magazine, Inc.  
Motivos Magazine

## In-Kind Sponsors

Higher Education Recruitment Consortium

## Adelante Leadership Institute Title Sponsor

Molson Coors/Miller Lite

## Adelante Leadership Institute Sponsors

California State University Fullerton  
Cal Poly Pomona Huntley College of Business  
Cardinal Health  
Church Mutual  
Cintas  
California State University Northridge  
Denny's  
Des Moines University  
FDIC  
Fidelity  
General Motors  
Hudson County Community College  
IFYC  
Italian Language Foundation  
Kelloggs  
Liberty Mutual  
Mount St. Mary's University  
Our Lady of the Lake University  
Palo Alto College  
Sherwin Williams  
Smithfield Foods  
Texas A&M International University  
Texas A&M University San Antonio  
Texas Lutheran University  
University of California Davis  
University of California Santa Cruz  
Union County College  
University of Texas San Antonio (UTSA)  
Valencia College  
VMware

## Grant Award

HACU was selected as a CPGI Awardee for the *All of Us* Research Program funded by the National Institutes of Health (NIH). *All of Us* is a historic effort to collect medical data from one million people living in the United States to accelerate research and studies on health and disease.



# HONORING CHAMPIONS OF HISPANIC HIGHER EDUCATION SUCCESS/HACU AWARDS

## 2021 HACU HONOREES

### HACU Hall of Champions



**Salme Harju Steinberg, Ph.D.**  
President Emerita  
Northeastern Illinois University

### HACU Hall of Champions



**Frank Reyes**  
Trustee  
San Bernardino Community College District

### President's Award of Excellence



**Monte E. Pérez, Ph.D.**  
Former President  
Los Angeles Mission College

### Exemplary Policy/Advocacy Leadership Award



**The Honorable Joaquin Castro**  
U.S. Representative (TX)

### Outstanding HACU-Member Institution



### Outstanding Private Sector Partner



### Extraordinary Philanthropic Partner Award



### Outstanding Public Sector Partner



# Soy Parte de... I'm Part of...

H I S P A N I C A L L I A N C E T O C H A M P I O N H I G H E R E D U C A T I O N

# la HACHE de HACU

H I S P A N I C A S S O C I A T I O N O F C O L L E G E S A N D U N I V E R S I T I E S

**HACU wishes to acknowledge the generosity of the following donors who have become part of La HACHE de HACU in the 2021 fiscal year by making a gift to the Association's annual appeal. This list does not include anonymous donors.**

**Champion's Circle**

Diversity Inc. Media, LLC

**Leader's Circle**

Antonio R. Flores

**President's Circle**

Apple

Benevity Community Impact Fund

Jorge Caballero

Emma Grace Hernandez

Iron Mountain HOLA - Hispanic and

Latino Employee Resource Group

Michael Nettles

David Ortiz

Dr. David Méndez Pagán, Universidad

Ana G. Méndez - Gurabo Campus

Greg Peterson

**Advocates Circle**

Reyes González

**Benefactor's Circle**

Michael D. Amirides

Kathryn E. Barrera

Imelda Bosquez

Magda Gonzalez

Matt Heggy

Laura Nieto

Mary L. "Lucy" Perez

Charles Rodriguez

Erica M. Romero

Garnett S. Stokes

Gloria V. Webber

**Partner's Circle**

Amazon Smile Foundation

Tito Guerrero, III

Norma Jean Revilla-Garcia

Lisanette Rosario

Alma Luisa Turk

**Patron's Circle**

Maria de Lourdes Bird

Jason Krumwiede

Brandon Lecuna

Juan Lopez-Driotis

Larry Ortiz

Margaret Venable

Claudia Zamora

**Friend of HACU**

Veronica Aguilar

Javier Araujo

Mary Beth Gonzales

Michael Jadoo

Silvia Kennison

Ebony King

William Lundy

Darlene Martin

Eduardo Martinez

Joe Mella

Damian Moncada

Jeanette Morales

Victor Olivares

Maria "Lupita" G. Partida

Amy Reinholds

Eva Rodriguez

Cesar Sanchez

Olivia Vasquez

**Combined Federal Campaign**

Lisette Soria-Ramirez

Jonathan Burns

Melissa Gonzalez

Enrique Gonzalez Santos

Erik Griego

Ricardo Nava

Sidia Nelson

Maria Olmedo-Malagon

Reinaldo Picon-Colon

Yvonne Porras

Alberto Ramon

Liz Sandoval

Tatiana Santiago

Diana Sen

Sylvia Spengler

Seth Theleiu

**City of San Antonio**

Michael De Leon

Cruz Esquivel

Jose L Solis

**Grant Award**

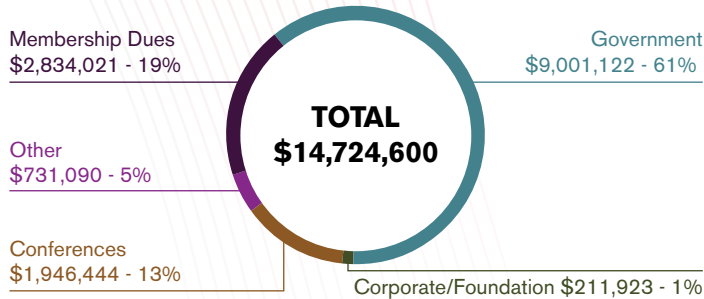
The Sallie Mae Fund awarded a \$125,000 to HACU in support of initiatives that advance social justice, diversity, inclusion and equality.



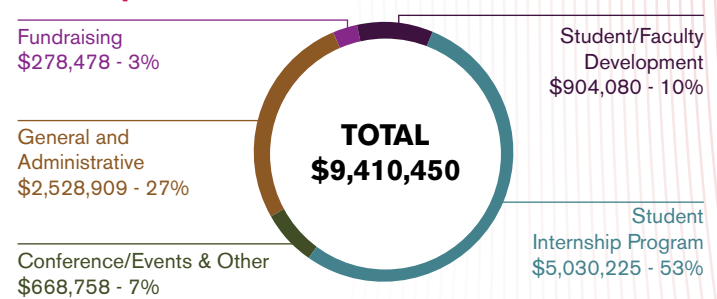
# FINANCIALS

The following information was extracted from HACU's 2021 financial audit by the accounting firm of Armstrong, Vaughan & Associates, P.C. For a complete copy of HACU's 2021 audited Financial Statements, contact Amanda Jaime at amanda.jaime@hacu.net or (210) 692-3805.

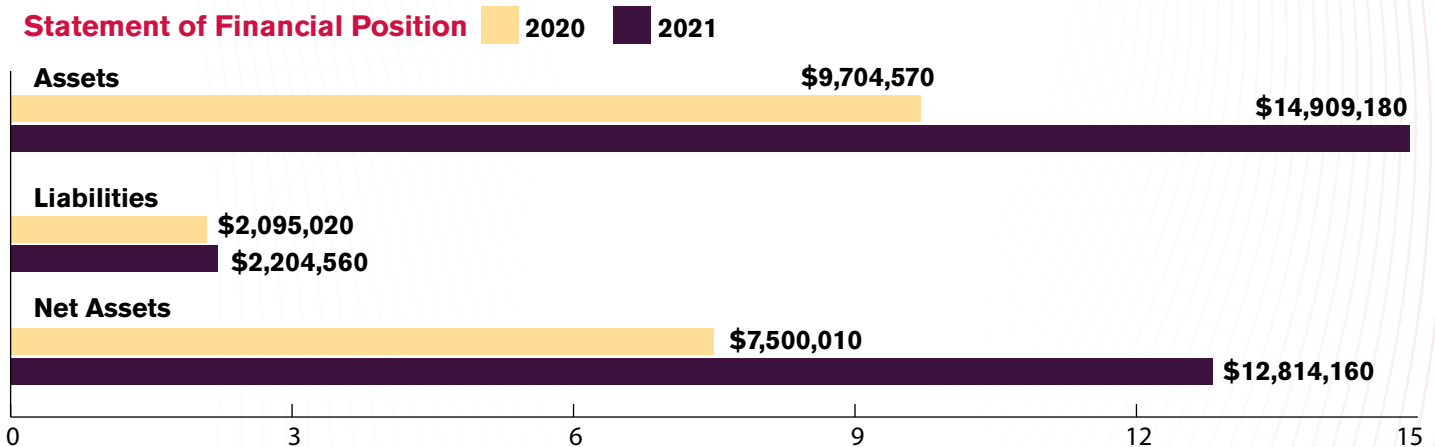
## 2021 Revenues



## 2021 Expenditures



## Statement of Financial Position



## Statement of Functional Expenses

Year Ended December 31, 2021

	Student/Faculty Develop./Scholar.	Student Internship Prog	Conf/Events & Other	Total	General & Admin	Fundraising	Total
<b>REVENUES</b>							
Dues					\$2,837,521.58		\$2,837,521.58
Federal Contract Revenue	\$11,754.04	\$5,415,891.35	\$269,240.75	\$5,696,886.14	\$608,527.00		\$6,305,413.14
Corporate/Foundations	\$2,850,925.00		\$764,527.09	\$3,615,452.09		\$146,742.05	\$3,762,194.14
Conference Fees	\$428,333.00		\$558,583.90	\$986,916.90			\$986,916.90
Investment Revenue					\$466,606.63		\$466,606.63
Individuals						\$65,180.53	\$65,180.53
Other	\$251,155.56		\$43,400.00	\$294,555.56	\$6,211.04		\$300,766.60
<b>Total Revenues</b>	<b>\$3,542,167.60</b>	<b>\$5,415,891.35</b>	<b>\$1,635,751.74</b>	<b>\$10,593,810.69</b>	<b>\$3,918,866.25</b>	<b>\$211,922.58</b>	<b>\$14,724,599.52</b>
<b>EXPENDITURES</b>							
Staff/Intern Compensation	\$366,237.01	\$3,962,791.94	\$248,759.49	\$4,577,788.44	\$2,349,303.00	\$224,875.44	\$7,151,966.88
Conference Expense/Travel	\$26,180.65	\$7,307.43	\$366,734.71	\$400,222.79	\$17,991.00		\$418,213.79
Consultants/Professional Services	\$21,373.00	\$60,892.58	\$10,452.75	\$92,718.33	\$165,466.54	\$24,223.19	\$282,408.06
Insurance					\$34,403.62		\$34,403.62
Advertising/Publications	\$3,606.15		\$37,304.70	\$40,910.85	\$36,551.61	\$197.90	\$77,660.36
Leases and Rentals		\$117,555.77		\$117,555.77	\$415,868.38		\$533,424.15
Scholarships/Stipends	\$377,250.00			\$377,250.00			\$377,250.00
Telephone, Supplies, Equipment and Repairs	\$81,751.87	\$21,843.70	\$3,548.09	\$107,143.66	\$120,016.72	\$18,226.81	\$245,387.19
Interest/Bank Fees	\$110.00	\$22,194.70		\$22,304.70	\$60,663.85		\$82,968.55
Other Line Items	\$9,243.16	\$19,241.69	\$760.03	\$29,244.88	\$166,568.09	\$10,954.42	\$206,767.39
Indirect Cost Recovery	\$18,327.73	\$818,397.14	\$1,198.59	\$837,923.46	(\$837,923.46)		
<b>Total Expenditures</b>	<b>\$904,079.57</b>	<b>\$5,030,224.95</b>	<b>\$668,758.36</b>	<b>\$6,603,062.88</b>	<b>\$2,528,909.35</b>	<b>\$278,477.76</b>	<b>\$9,410,449.99</b>



# HACU MEMBERSHIP

## HACU National Institutions

455 HACU National Institutions in 35 States, Puerto Rico, and the District of Columbia as of Dec. 31, 2021

### Hispanic-Serving Institutions (HSI)

A nonprofit, accredited college, university or system in the U.S. or Puerto Rico, where total Hispanic enrollment constitutes a minimum of 25 percent of the total enrollment at the undergraduate or graduate level or both.

#### Alabama (2)

Stillman College (Partner)  
The University of Alabama at Birmingham (Partner)

#### Arizona (19)

Arizona State University (HSI)  
Chandler-Gilbert Community College (HSI)  
Cochise College (HSI)  
Coconino Community College (AMI)  
College of Applied Science & Technology (HSI)  
Estrella Mountain Community College (HSI)  
GateWay Community College (HSI)  
Glendale Community College (HSI)  
Maricopa Community Colleges (HSI System/District)  
Mesa Community College (HSI)  
Mohave Community College (HSI)  
Northern Arizona University (HSI)  
Northern Arizona University-Yuma Branch Campus (HSI)  
Ottawa University Surprise Arizona (HSI)  
Phoenix College (HSI)  
Pima Community College (HSI System/District)  
Scottsdale Community College (AMI)  
South Mountain Community College (HSI)  
The University of Arizona (HSI)

### Associate Member Institution (AMI)

A nonprofit, accredited college, university or system in the U.S. or Puerto Rico, where at least 1,000 Hispanic students are enrolled, or total Hispanic enrollment constitutes at least 10 percent of the total enrollment at the undergraduate or graduate level or both.

#### Arkansas

Cossatot Community College of the University of Arkansas (HSI)

#### California (120)

Allan Hancock College (HSI)  
Antelope Valley College (HSI)  
Antioch University, Santa Barbara (HSI)  
Azusa Pacific University (HSI)  
Bakersfield College (HSI)  
Cabrillo College (HSI)  
California Lutheran University (HSI)  
California Polytechnic State University, San Luis Obispo (AMI)  
California State Polytechnic University, Pomona (HSI)  
California State University Channel Islands (HSI)  
California State University System Office (HSI System/District)  
California State University, Bakersfield (HSI)  
California State University, Chico (HSI)  
California State University, Dominguez Hills (HSI)  
California State University, East Bay (HSI)  
California State University, Fresno (HSI)  
California State University, Fullerton (HSI)  
California State University, Long Beach (HSI)

### Partner Institution (Partner)

A nonprofit, accredited college, university, or system in the U.S. or Puerto Rico, where total Hispanic enrollment constitutes less than 10 percent of the total enrollment.

California State University, Los Angeles (HSI)  
California State University, Monterey Bay (HSI)  
California State University, Northridge (HSI)  
California State University, San Bernardino (HSI)  
California State University, San Marcos (HSI)  
California State University, Stanislaus (HSI)  
Cañada College (HSI)  
Cerro Coso Community College (HSI)  
Chaffey College (HSI)  
Chapman University (AMI)  
Charles R. Drew University of Medicine and Science (HSI)  
Clovis Community College (HSI)  
Coast Community College District (HSI System/District)  
College of the Desert (HSI)  
College of the Sequoias (HSI)  
Concordia University Irvine (HSI)  
Crafton Hills College (HSI)  
Cuesta College (HSI)  
Cuyamaca College (HSI)  
Cypress College (HSI)  
El Camino College (HSI)  
Fresno Pacific University (HSI)  
Fullerton College (HSI)  
Grossmont College (HSI)  
Grossmont-Cuyamaca Community College District (HSI System/District)  
Hartnell College (HSI)  
Humboldt State University (HSI)



## HACU National Institutions

### California (120)

Imperial Valley College (HSI)  
 Kern Community College District (HSI System/District)  
 La Sierra University (HSI)  
 Las Positas College (HSI)  
 Long Beach City College (HSI)  
 Los Angeles City College (HSI)  
 Los Angeles Harbor College (HSI)  
 Los Angeles Mission College (HSI)  
 Los Angeles Pierce College (HSI)  
 Los Angeles Valley College (HSI)  
 Loyola Marymount University (HSI)  
 Merced College (HSI)  
 Mills College (HSI)  
 MiraCosta Community College District (HSI)  
 Mission College (HSI)  
 Modesto Junior College (HSI)  
 Monterey Peninsula College (HSI)  
 Moorpark College (HSI)  
 Moreno Valley College (HSI)  
 Mount Saint Mary's University (HSI)  
 Mt. San Antonio College (HSI)  
 Mt. San Jacinto College (HSI)  
 Napa Valley College (HSI)  
 National University (HSI)  
 Norco College (HSI)  
 Northcentral University (AMI)  
 Oxnard College (HSI)  
 Pacific Oaks College (HSI)  
 Pasadena City College (HSI)  
 Porterville College (HSI)  
 Reedley College (HSI)  
 Rio Hondo College (HSI)  
 Riverside City College (HSI)  
 Riverside Community College District (HSI System/District)  
 Sacramento State University (HSI)  
 Saint Mary's College of California (HSI)  
 San Bernardino Community College District (HSI System/District)  
 San Bernardino Valley College (HSI)  
 San Diego Community College District (HSI System/District)  
 San Diego State University (HSI)  
 San Diego State University, Imperial Valley Campus (HSI)  
 San Francisco State University (HSI)  
 San Jose City College (HSI)  
 San Jose State University (HSI)  
 Santa Clara University (AMI)  
 Santa Monica College (HSI)  
 Shasta College (AMI)  
 Sonoma County Junior College District (HSI System/District)  
 Sonoma State University (HSI)  
 Southern California University of Health Sciences (HSI)  
 Southwestern College (HSI)  
 Southwestern Law School (HSI)  
 The Chicago School of Professional Psychology (AMI)  
 University of California, Berkeley (AMI)

University of California, Davis (HSI)  
 University of California, Irvine (HSI)  
 University of California, Los Angeles (AMI)  
 University of California, Merced (HSI)  
 University of California, Riverside (HSI)  
 University of California, San Diego (AMI)  
 University of California, San Francisco (AMI)  
 University of California, Santa Barbara (HSI)  
 University of California, Santa Cruz (HSI)  
 University of La Verne (HSI)  
 University of San Diego (AMI)  
 University of Southern California (AMI)  
 Vanguard University (HSI)  
 Ventura College (HSI)  
 Ventura County Community College District (HSI System/District)  
 Victor Valley College (HSI)  
 West Hills College Coalinga (HSI)  
 West Hills Community College District (HSI System/District)  
 West Los Angeles College (HSI)  
 Whittier College (HSI)  
 Woodbury University (HSI)

### Colorado (14)

Adams State University (HSI)  
 Aims Community College (HSI)  
 Colorado College (AMI)  
 Colorado Mountain College (HSI)  
 Colorado State University-Fort Collins (AMI)  
 Colorado State University-Pueblo (HSI)  
 Community College of Aurora (HSI)  
 Community College of Denver (HSI)  
 Emily Griffith Technical College (HSI)  
 Metropolitan State University of Denver (HSI)  
 Morgan Community College (HSI)  
 Pueblo Community College (HSI)  
 The University of Northern Colorado (AMI)  
 University of Colorado Denver | Anschutz Medical Campus (HSI)

### Connecticut (4)

Capital Community College (HSI)  
 Goodwin College (AMI)  
 Southern Connecticut State University (AMI)  
 Western Connecticut State University (AMI)

### District of Columbia

The Catholic University of America (AMI)

### Florida (18)

Ana G. Mendez University (HSI)  
 Barry University (HSI)  
 Eckerd College (Partner)  
 Florida Atlantic University (HSI)  
 Florida Gulf Coast University (AMI)  
 Florida International University (HSI)  
 Florida Southern College (AMI)  
 Hillsborough Community College (HSI)  
 Hodges University (HSI)

Keiser University (HSI)  
 Miami Dade College (HSI)  
 New College of Florida (AMI)  
 Nova Southeastern University (HSI)  
 Polk State College (HSI)  
 Southeastern University (AMI)  
 St. Thomas University (HSI)  
 University of Central Florida (HSI)  
 Valencia College (HSI System/District)

### Georgia (3)

Dalton State College (HSI)  
 Emory University (AMI)  
 Georgia Southern University (AMI)

### Idaho

Boise State University (AMI)

### Illinois (28)

Aurora University (HSI)  
 Chicago State University (AMI)  
 College of DuPage (HSI)  
 Concordia University Chicago (HSI)  
 DePaul University (AMI)  
 Dominican University (HSI)  
 Elgin Community College (HSI)  
 Governors State University (AMI)  
 Harold Washington College, City Colleges of Chicago (HSI)  
 Joliet Junior College (HSI)  
 McHenry County College (AMI)  
 Monmouth College (AMI)  
 Morton College (HSI)  
 National Louis University (HSI)  
 North Park University (HSI)  
 Northeastern Illinois University (HSI)  
 Northern Illinois University (AMI)  
 Northwestern University (AMI)  
 Roosevelt University (HSI)  
 Saint Xavier University (HSI)  
 Southern Illinois University, Carbondale (AMI)  
 St. Augustine College (HSI)  
 Triton College (HSI)  
 University of Chicago (AMI)  
 University of Illinois Chicago (HSI)  
 University of Illinois, Urbana-Champaign (AMI)  
 University of St. Francis (AMI)  
 Waubesa Community College (HSI)

### Indiana (6)

Ball State University (AMI)  
 Goshen College (HSI)  
 Indiana University Northwest (HSI)  
 Indiana University South Bend (AMI)  
 Purdue University Northwest (AMI)  
 Rose-Hulman Institute of Technology (AMI)

### Iowa (2)

Iowa Wesleyan University (AMI)  
 Loras College (AMI)

## HACU National Institutions

### Kansas (4)

Dodge City Community College (HSI)  
Fort Hays State University (AMI)  
Newman University (AMI)  
The University of Kansas (AMI)

### Louisiana

Southern University Law Center (Partner)

### Maryland (5)

Capitol Technology University (AMI)  
Montgomery College (HSI)  
Salisbury University (Partner)  
University of Maryland, Baltimore (AMI)  
University of Maryland, Baltimore County (AMI)

### Massachusetts (11)

American International College (AMI)  
Bunker Hill Community College (HSI)  
Framingham State University (AMI)  
Mount Holyoke College (AMI)  
Northern Essex Community College (HSI)  
Regis College (AMI)  
Salem State University (AMI)  
Springfield Technical Community College (HSI)  
University of Massachusetts Medical School (Partner)  
Wellesley College (AMI)  
Worcester State University (AMI)

### Michigan (4)

Central Michigan University (Partner)  
Hope College (Partner)  
Michigan State University (AMI)  
University of Michigan, Ann Arbor (AMI)

### Missouri (3)

Missouri Valley College (AMI)  
Southeast Missouri State University (Partner)  
Washington University in St. Louis (AMI)

### Nebraska (4)

Central Community College (AMI)  
Chadron State College (Partner)  
University of Nebraska at Kearney (AMI)  
University of Nebraska Omaha (AMI)

### Nevada (4)

College of Southern Nevada (HSI)  
Nevada State College (HSI)  
Truckee Meadows Community College (HSI)  
University of Nevada, Las Vegas (HSI)

### New Jersey (17)

Bergen Community College (HSI)  
Bloomfield College (HSI)  
Caldwell University (HSI)  
Essex County College (HSI)  
Fairleigh Dickinson University (HSI)  
Hudson County Community College (HSI)  
Kean University (HSI)  
Middlesex County College (HSI)  
Montclair State University (HSI)  
New Jersey City University (HSI)  
Pillar College (HSI)  
Rider University (AMI)  
Rutgers, The State University of New Jersey, Newark Campus (HSI)  
Saint Elizabeth University (HSI)  
Stockton University (AMI)  
Union County College (HSI)  
William Paterson University (HSI)

### New Mexico (19)

Central New Mexico Community College (HSI)  
Clovis Community College (HSI)  
Eastern New Mexico University – Roswell (HSI)  
New Mexico Highlands University (HSI)  
New Mexico Institute of Mining and Technology (HSI)  
New Mexico Military Institute (HSI)  
New Mexico State University (HSI)  
New Mexico State University Alamogordo (HSI)  
New Mexico State University Carlsbad (HSI)  
New Mexico State University Grants (HSI)  
Northern New Mexico College (HSI)  
Santa Fe Community College (HSI)  
Southwestern College (AMI)  
The University of New Mexico (HSI)  
The University of New Mexico – Los Alamos (HSI)  
The University of New Mexico – Valencia Campus (HSI)  
University of New Mexico, Taos (HSI)  
University of the Southwest (HSI)  
Western New Mexico University (HSI)

### New York (28)

Adelphi University (AMI)  
Boricua College (HSI)  
Borough of Manhattan Community College, CUNY (HSI)  
Bronx Community College, CUNY (HSI)  
Brooklyn College, CUNY (AMI)  
Buffalo State College, SUNY (AMI)  
College of Mount Saint Vincent (HSI)  
College of Staten Island, CUNY (HSI)  
Dominican College (HSI)  
Eugenio Maria de Hostos Community College, CUNY (HSI)  
John Jay College of Criminal Justice, CUNY (HSI)  
Lehman College, CUNY (HSI)

Manhattan College (HSI)  
Maria College (Partner)  
Mercy College (HSI)  
New York City College of Technology, CUNY (HSI)  
New York Institute of Technology (AMI)  
Queens College, CUNY (HSI)  
Queensborough Community College, CUNY (HSI)  
Rockland Community College, SUNY (HSI)  
St. Francis College (HSI)  
State University of New York College at Oswego (AMI)  
Stella and Charles Guttman Community College, CUNY (HSI)  
The City University of New York (HSI System/District)  
The Graduate Center, CUNY (AMI)  
University at Albany, SUNY (AMI)  
Vaughn College of Aeronautics and Technology (HSI)  
York College, CUNY (HSI)

### North Carolina (5)

Duke University (Partner)  
Elon University (Partner)  
Fayetteville Technical Community College (AMI)  
Johnson & Wales University-Charlotte (AMI)  
The University of North Carolina at Charlotte (AMI)

### Ohio (2)

Case Western Reserve University (Partner)  
Mercy College of Ohio (Partner)

### Oklahoma (2)

Oklahoma Panhandle State University (HSI)  
University of Central Oklahoma (AMI)

### Oregon (7)

Chemeketa Community College (HSI)  
Columbia Gorge Community College (HSI)  
George Fox University (AMI)  
Linfield University (AMI)  
Oregon State University (AMI)  
Warner Pacific University (HSI)  
Western Oregon University (AMI)

### Pennsylvania (13)

Esperanza College of Eastern University (HSI)  
Gettysburg College (AMI)  
Holy Family University (Partner)  
Lackawanna College (AMI)  
Montgomery County Community College (Partner)  
Susquehanna University (Partner)  
Thaddeus Stevens College of Technology (AMI)  
The Philadelphia College of Osteopathic Medicine (Partner)  
The University of Scranton (AMI)  
University of Pennsylvania (AMI)  
University of Pittsburgh (AMI)  
Villanova University (AMI)  
York College of Pennsylvania (Partner)



## HACU National Institutions

### Puerto Rico (18)

Atlantic University College (HSI)  
 Colegio Universitario de San Juan (HSI)  
 EDP University of Puerto Rico – Hato Rey (HSI)  
 EDP University of Puerto Rico – San Sebastian (HSI)  
 Inter American University of Puerto Rico, Metro Campus (HSI)  
 Inter American University of Puerto Rico, San German (HSI)  
 Inter American University of Puerto Rico, System Central Office (HSI System/District)  
 Polytechnic University of Puerto Rico (HSI)  
 Pontificia Universidad Catolica de Puerto Rico (HSI)  
 Universidad Ana G. Méndez (HSI System/District)  
 Universidad Ana G. Méndez, Recinto de Carolina (HSI)  
 Universidad Ana G. Méndez, Recinto de Cupey (HSI)  
 Universidad Ana G. Méndez, Recinto de Gurabo (HSI)  
 Universidad Carlos Albizu (HSI)  
 Universidad Central del Caribe (HSI)  
 Universidad del Sagrado Corazon (HSI)  
 University of Puerto Rico, Mayaguez (HSI)  
 University of Puerto Rico, Rio Piedras (HSI)

### Rhode Island (2)

Community College of Rhode Island (AMI)  
 Rhode Island College (HSI)

### Tennessee (3)

Southern Adventist University (HSI)  
 Southwest Tennessee Community College (Partner)  
 The University of Tennessee, Knoxville (AMI)

### Texas (69)

Alamo Colleges District (HSI System/District)  
 Austin Community College District (HSI)  
 Baylor University (AMI)  
 Coastal Bend College (HSI)  
 College of the Mainland (HSI)  
 Concordia University Texas (HSI)  
 Dallas College (HSI System/District)  
 El Paso Community College (HSI)  
 Galveston College (HSI)  
 Hallmark University (HSI)  
 Houston Baptist University (HSI)  
 Houston Community College System (HSI System/District)  
 Jarvis Christian College (AMI)  
 Lamar State College Port Arthur (HSI)  
 Lamar University (AMI)  
 Laredo Community College (HSI)  
 Lone Star College System (HSI System/District)

Midwestern State University (AMI)  
 Northeast Lakeview College (HSI)  
 Northwest Vista College (HSI)  
 Our Lady of the Lake University (HSI)  
 Palo Alto College (HSI)  
 Paul Quinn College (AMI)  
 Rice University (AMI)  
 Sam Houston State University (HSI)  
 San Antonio College (HSI)  
 San Jacinto College (HSI)  
 South Texas College (HSI)  
 Southwest Texas Junior College (HSI)  
 Southwestern Adventist University (HSI)  
 Southwestern University (HSI)  
 St. Edward's University (HSI)  
 St. Mary's University (HSI)  
 St. Philip's College (HSI)  
 Sul Ross State University (HSI)  
 Tarleton State University (AMI)  
 Tarrant County College District (HSI System/District)  
 Texas A&M International University (HSI)  
 Texas A&M University (HSI)  
 Texas A&M University-Corpus Christi (HSI)  
 Texas A&M University-Kingsville (HSI)  
 Texas A&M University-San Antonio (HSI)  
 Texas Christian University (AMI)  
 Texas Lutheran University (HSI)  
 Texas Southmost College (HSI)  
 Texas State University (HSI)  
 Texas Tech University (HSI)  
 Texas Tech University Health Sciences Center (HSI)  
 Texas Tech University Health Sciences Center El Paso (HSI)  
 Texas Woman's University (HSI)  
 The University of Texas at Arlington (HSI)  
 The University of Texas at Austin (AMI)  
 The University of Texas at El Paso (HSI)  
 The University of Texas at San Antonio (HSI)  
 The University of Texas Health Science Center at San Antonio (HSI)  
 The University of Texas Permian Basin (HSI)  
 The University of Texas Rio Grande Valley (HSI)  
 Trinity University (HSI)  
 University of Houston (HSI)  
 University of Houston System (HSI System/District)  
 University of Houston-Clear Lake (HSI)  
 University of Houston-Downtown (HSI)  
 University of Houston-Victoria (HSI)  
 University of North Texas (HSI)  
 University of North Texas at Dallas (HSI)  
 University of North Texas Health Science Center at Fort Worth (AMI)  
 University of the Incarnate Word (HSI)  
 West Texas A&M University (HSI)  
 Western Texas College (HSI)

### Utah (2)

Utah Valley University (AMI)  
 Weber State University (AMI)

### Virginia (3)

Marymount University (HSI)  
 University of Lynchburg (Partner)  
 Washington and Lee University (Partner)

### Washington (3)

Heritage University (HSI)  
 Pacific Lutheran University (AMI)  
 Whitman College (Partner)

### Wisconsin (7)

Alverno College (HSI)  
 Marquette University (AMI)  
 Milwaukee Area Technical College (AMI)  
 Milwaukee Institute of Art & Design (AMI)  
 University of Wisconsin-Green Bay (Partner)  
 University of Wisconsin-Parkside (AMI)  
 Viterbo University (Partner)

## HACU International Institutions

As of Dec. 31, 2021

An institution of higher education abroad that documents that it is a legally constituted entity authorized to operate in its country according to the rules and regulations required by its government.

### 33 HACU International Institutions in 9 countries in Latin America and Europe

#### Barbados

Ross University School of Medicine

#### Chile

Universidad Mayor

#### Costa Rica

Universidad de Iberoamérica

#### El Salvador (3)

Escuela Especializada en Ingeniería ITCA-FEPADE

Universidad Católica de El Salvador

Universidad Tecnológica de El Salvador

#### Guatemala (2)

EADE Business School

Universidad del Istmo

#### Honduras

Universidad Católica de Honduras “Nuestra Señora Reina de la Paz”

#### México (7)

Centro de Estudios Universitarios

CETYS Universidad

Instituto de Ciencias y Estudios Superiores de Tamaulipas

Instituto Nacional de Salud Pública

Universidad Autónoma de Guadalajara

Universidad Autónoma de Nuevo León

Universidad de Guadalajara

## HACU Hispanic-Serving School Districts (HSSDs)

As of Dec. 31, 2021

Any public or private K-12 school district where Hispanic students constitute a minimum of 25 percent of the total enrollment.

### 18 HACU HSSD Affiliates in 10 States

#### Alabama

Russellville City Schools

#### Arizona

Tucson Unified School District

#### California (6)

Colton Joint Unified School District

Lynwood Unified School District

Moreno Valley Unified School District

San Bernardino City Unified School District

San Bernardino County Superintendent of Schools

Victor Valley Union High School District

#### Colorado

Chavez Huerta K-12 Preparatory Academy

#### Illinois

Joliet Public Schools District 86

#### Nicaragua

Universidad Nacional de Ingeniería (UNI)

#### Spain (16)

Embassy of Spain-Trade Commission Miami (U.S.-based)

EU Business School

Formato Educativo Escuela de Negocios

Gresol International American School

Infinite Spur

Universidad Intercontinental de la Empresa (UIE)

(Intercontinental University of Business)

Universidad de Alcalá

Universidad de Burgos

Universidad de Las Palmas de Gran Canaria

Universidad de León

Universidad de Málaga

Universidad de Salamanca

Universidad de Valladolid

Universidad Europea Miguel de Cervantes

Universidad Rey Juan Carlos

Universitat Oberta de Catalunya

#### Indiana

River Forest Community School Corporation

#### Nevada

Clark County School District

#### New Jersey (3)

Elizabeth Public Schools

Passaic County Technical Institute

Passaic Public Schools

#### Ohio

Whitehall City Schools

#### Pennsylvania (2)

Community Academy of Philadelphia Charter School

The ASPIRA Schools of Pennsylvania



## HACU Educational Affiliates

As of Dec. 31, 2021

Nonprofit organizations, associations or councils that are deemed by the Internal Revenue Service as nonprofit status and are not institutions of higher education or school district.

### 6 HACU Educational Affiliates in 6 States

#### California

Higher Education Recruitment Consortium-HERC

#### Illinois

IES Abroad

#### Massachusetts

JSI Research & Training Institute, Inc. (JSI)

#### New Jersey

Educational Testing Service

#### New York

Institute of International Education (IIE)

#### Texas

Community Colleges for International Development

## HACU Faculty and Staff Affiliates

As of Dec. 31, 2021

Faculty and Staff Affiliates at HACU-member institutions have their institution's name listed in bold.

Faculty and Staff Affiliates at non-member and nonprofit institutions have their institution's name listed in regular print.

### 40 HACU Faculty and Staff Affiliates in 17 States

#### Arkansas

Baptist Health College Little Rock  
Dr. Judy Pile  
Chancellor

Los Angeles Trade-Technical College  
Ms. Cindy Dominguez  
Instructor

#### California (13)

##### California State University, Chico

Ms. Bertha Alicia Curiel  
Coordinator of Strategic Partnerships for  
Educational Equity

Los Angeles Trade-Technical College  
Ms. Jennifer P. Galvez  
Faculty

Los Angeles Trade-Technical College  
Prof. Velveth Klee  
Professor of Physics

##### California State University, Long Beach

Dr. Arturo Zavala  
Professor, Psychology

Los Angeles Trade-Technical College  
Ms. Klaudia Macias  
Coordinator/Counselor

##### City College of San Francisco

Dr. Vinicio J. Lopez  
Dean of Academic Affairs and Student  
Affairs

Los Angeles Trade-Technical College  
Ms. Emilia Solval  
Administrative Aide

##### Concordia University Irvine

Ms. Amanda Harris  
Director of Student Life & Development

Sacramento City College  
Ms. Sandra Camarena  
Professor

##### Concordia University Irvine

Ms. Lizz Mishreki  
Director of Public Relations

**Illinois**  
**College of DuPage**  
Ms. Saraliz Jimenez  
Manager

##### Concordia University Irvine

Ms. Jazlyn Ortuño-Nuñez  
Academic Advisor and Student Success  
Coordinator

**Indiana (2)**  
Indiana State University  
Dr. Elonda V. Ervin  
Executive Director

Los Angeles Trade-Technical College

Ms. Maggie Cordero  
Associate Dean

Indiana State University  
Ms. Theresa Ortega  
Founding Member - HOLA (Hispanic/Latino  
Org for Leadership & Advocacy)

#### Kentucky

University of Louisville  
Dr. Andrew S. Manikas  
Associate Professor, Management

#### Maryland (2)

Hood College  
Ms. Vanessa C. Solis  
Assistant Director of Graduate Admission

University of Maryland Global Campus  
Dr. Blair H. Hayes  
VP and Chief Diversity Officer

#### Missouri (3)

Missouri State University  
Dr. Blanca Judith Martinez  
Diversity Fellow/Assistant Professor

Missouri State University  
Dr. Juan Meraz  
Assistant Vice President

St. Charles Community College  
Ms. Martha Garcia Kampen  
Chief Diversity & Compliance Officer

#### Nebraska

University of Nebraska Central  
Administration  
Ms. Stancia Jenkins  
Chief Diversity and Inclusion Officer

#### New Jersey

##### New Jersey City University

Ms. Jennifer Valcarcel  
OSP/EOF Counselor

## HACU Faculty and Staff Affiliates

### New Mexico (2)

**New Mexico State University**  
Dr. Efren Delgado  
Associate Professor

**New Mexico State University**  
**Alamogordo**  
Ms. Sofia Ugarte  
Student Success Coach

### New York

Broome Community College, SUNY  
Dr. Carol Ross-Scott  
VP Student Development and Chief  
Diversity Officer

### Ohio

Franciscan University of Steubenville  
Dr. James Mello  
Executive Director

### Pennsylvania

West Chester University of Pennsylvania  
Dr. Tony Delgado  
Assistant Vice President, Student Affairs

### Texas (6)

Austin Presbyterian Theological Seminary  
Dr. David Jensen  
Academic Dean

### St. Edward's University

Dr. Gloria A. White  
Director of Sponsored Programs &  
Mathematics Faculty Associate

### Texas A&M University

Dr. Gabriela C. Zapata  
Associate Professor/ADVANCE  
Administrative Fellow

### Texas State University

Dr. Larry Rivera Chapa  
Director, Testing, Evaluation, &  
Measurement Center (TEMC)

### The University of Texas at Austin

Ms. Rachelle Hernandez  
Senior Advisor for Enrollment Management

### University of the Incarnate Word

Mr. Armando Saliba  
Associate Director

### Vermont

The University of Vermont  
Dr. Jim O. Vigoreaux  
Vice Provost for Faculty Affairs

### Washington (2)

Eastern Washington University  
Dr. Christina Torres Garcia  
Director & Principal Investigator, Ronald E.  
McNair Scholar Program

Skagit Valley College  
Ms. Yadira Rosales  
Associate Vice President, Equity and  
Inclusion

### Wisconsin

Northeast Wisconsin Technical College  
Dr. Colleen Simpson  
Vice President of Student Services

## HACU Student Affiliates

### As of Dec. 31, 2021

Students Affiliates currently enrolled at HACU member institutions have their institution's name listed in bold. Student Affiliates at non-member and nonprofit institutions have their institution's name listed in regular print.

### 11 HACU Student Affiliates in 9 States and Puerto Rico

#### California

**California State University,**  
**San Bernardino**  
Audrey Aparicio  
Business Administration  
Undergraduate Level

#### Florida

Columbia University in the City  
of New York  
Madison Gabrielle Herin  
Health Policy  
Graduate Level

#### Hawaii

University of Hawaii at Hilo  
Sienna Wareham  
Business Administration  
Undergraduate Level

#### Idaho

**Boise State University**  
Maricela Deveney  
Health Studies  
Undergraduate Level

#### New Jersey (2)

**New Jersey City University**  
Karla Celestin  
Public Health Education  
Undergraduate Level

#### New Jersey City University

Dyana Rivera  
Spanish  
Undergraduate Level

#### New York

**Borough of Manhattan**  
**Community College, CUNY**  
Ryan Najac  
Undergraduate Level

#### Oregon

**Western Oregon University**  
Jessica Martinez Medina  
Public Policy and  
Administration  
Undergraduate Level

#### Puerto Rico

**University of Puerto Rico,**  
**Mayaguez**  
Belma del Mar Sandoval  
Caraballo  
Chemical Engineering  
Undergraduate Level

#### Rhode Island

**Rhode Island College**  
Burkan Owaid  
Counseling  
Graduate Level

#### Texas

**St. Mary's University**  
Tiffany L. Garcia  
Psychology  
Undergraduate Level

## HACU Trustee Affiliates

### As of Dec. 31, 2021

Trustee Affiliates at HACU-member institutions have their institution's name listed in bold.

Trustee Affiliates at non-member and nonprofit institutions have their institution's name listed in regular print.

### 3 HACU Trustee Affiliates in 2 States

#### California (2)

**Chaffey College**  
Ms. Deana Olivares-Lambert  
Board Member

#### San Diego Community College District

Dr. Maria Nieto Senour  
Board Member

#### Washington

**Heritage University**  
Ms. Paula Linnen  
Board Member



# 2022/23 CALENDAR OF EVENTS

**October 8-10, 2022**

## **HACU 36th Annual Conference**

**Championing Hispanic Higher Education Success:  
Rebuilding a More Resilient and Inclusive America**

**Manchester Grand Hyatt San Diego  
San Diego, California**

**October 8-10, 2022**

HACU ¡Adelante! Leadership Institute (Student Track)

### **Pre- and Post-Conference Events**

**October 8, 2022**

21<sup>st</sup> Annual Latino Higher Education Leadership Institute

**October 8, 2022**

Eighth PreK-12/Higher Education  
Collaboration Symposium

**October 11, 2022**

11<sup>th</sup> Annual Deans' Forum on Hispanic  
Higher Education



**April 18-19, 2023**

## **28<sup>th</sup> Annual Capitol Forum on Hispanic Higher Education**

Hilton Washington DC Capitol Hill  
Washington, D.C.





# HISPANIC ASSOCIATION OF COLLEGES & UNIVERSITIES

## **NATIONAL HEADQUARTERS**

8415 Datapoint Dr., Suite 400  
San Antonio, Texas 78229  
tel: (210) 692-3805  
fax: (210) 692-0823  
email: [hacu@hacu.net](mailto:hacu@hacu.net)  
Facebook: HACUNews  
Twitter: @HACUNews  
Instagram: @hacunews  
LinkedIn: Hispanic Association of Colleges and Universities

## **WASHINGTON, D.C. OFFICE**

One Dupont Circle N.W., Suite 430  
Washington, D.C. 20036  
tel: (202) 833-8361  
fax: (202) 261-5082  
email: [dcgr@hacu.net](mailto:dcgr@hacu.net)  
Twitter: @HACUDC

## **WESTERN REGIONAL OFFICE**

1107 9th Street, Suite 830  
Sacramento, CA 95814  
tel: (916) 442-0392  
fax: (916) 446-4028  
email: [wro@hacu.net](mailto:wro@hacu.net)  
Twitter: @HACUWRO

Stay Connected with @HACUNews



[hacu.net](http://hacu.net)

THE CHAMPIONS OF HISPANIC SUCCESS IN HIGHER EDUCATION