

# 2019

## ANNUAL REPORT



**HACU**

H I S P A N I C  
A S S O C I A T I O N  
O F C O L L E G E S &  
U N I V E R S I T I E S

THE  
CHAMPIONS  
OF HISPANIC  
SUCCESS IN  
HIGHER EDUCATION

# CONTENTS

	About HACU	2
	HACU Governing Board	3
	Corporate and Philanthropic Council	4
	Message from the President/CEO and Chair of the Board	5
	Strengthening Our Voice in Numbers/Membership	7
	Advocating for Hispanic Higher Education	9
Opening Doors to a Diverse Workforce/HACU National Internship Program		11
	Investing in College Students	13
Preparing the Next Generation of Higher Education Leaders		14
	National Capitol Forum on Hispanic Higher Education	15
	International Conference	15
	Annual Conference	16
	Pre/Post Events, Special Events	17
	Sponsors and Partners	18
Honoring Champions of Hispanic Higher Education Success/HACU Awards		19
	La HACHE de HACU/Donors	20
	Financials	21
	HACU Membership	22
	National Member Institutions	23
	International Member Institutions	27
	Hispanic-Serving School District Affiliates	28
	Trustee Affiliates	28
	Educational Affiliates	28
	Faculty and Staff Affiliates	29
	Student Affiliates	30



HACU Leaders-in-Residence with Mickey Mouse at HACU's 33rd Annual Conference



HACU staff/representatives with 24 Fellows of the inaugural Leadership Academy/La Academia de Liderazgo

# ABOUT HACU

## Hispanic Association of Colleges and Universities

For 34 years, the mission of the Hispanic Association of Colleges and Universities (HACU) has been to Champion Hispanic Success in Higher Education. HACU fulfills its mission by: promoting the development of member colleges and universities; improving access to and the quality of postsecondary educational opportunities for Hispanic students; and meeting the needs of business, industry and government through the development and sharing of resources, information and expertise.

HACU is the only organization that represents existing and emerging Hispanic-Serving Institutions (HSIs). HSIs today represent 17 percent of all institutions of higher education that enroll 67 percent of Hispanic undergraduates.

HACU serves its membership through advocacy, conferences, partnerships and educational programs, and offers scholarships and internship opportunities for students.

HACU is a nonprofit 501(c)(3) association with a membership of more than 500 colleges and universities in the United States, Washington, D.C., Puerto Rico, Latin America, Spain, and includes U.S. school districts. HACU's headquarters are located in San Antonio, Texas, with regional offices in Washington, D.C., and Sacramento, California.

# 2019-20 HACU GOVERNING BOARD



**Monte E. Pérez, *Chair***  
 President  
 Los Angeles Mission College  
 Sylmar, Calif.



**Sue Henderson, *Vice-Chair***  
 President  
 New Jersey City University  
 Jersey City, N.J.



**Margaret Venable, *Treasurer***  
 President  
 Dalton State College  
 Dalton, Ga.



**Mike Flores, *Secretary***  
 Chancellor  
 Alamo Colleges District  
 San Antonio, Texas



**Félix V. Matos Rodríguez, *Past Chair***  
 Chancellor  
 The City University of New York  
 New York, N.Y.



**Michael D. Amiridis**  
 Chancellor  
 University of Illinois at Chicago  
 Chicago, Ill.



**Joseph I. Castro**  
 President  
 California State University, Fresno  
 Fresno, Calif.



**Adela de la Torre**  
 President  
 San Diego State University  
 San Diego, Calif.



**Howard Gillman**  
 Chancellor  
 University of California, Irvine  
 Irvine, Calif.



**Reyes M. González**  
 President  
 St. Augustine College  
 Chicago, Ill.



**Maria Harper-Marinick**  
 Former Chancellor  
 Maricopa Community Colleges  
 Tempe, Ariz.



**Emma Grace Hernández Flores**  
 President  
 Universidad de Iberoamérica  
 San José, Costa Rica



**Olga Hugelmeyer**  
 Superintendent of Schools  
 Elizabeth Public Schools  
 Elizabeth, N.J.



**Joe Mella**  
 Finance Division  
 Goldman Sachs  
 New York, N.Y.



**David Méndez Pagán**  
 Rector  
 Universidad Ana G. Méndez  
 Recinto de Gurabo  
 Gurabo, Puerto Rico



**Juan Muñoz**  
 President  
 University of Houston-Downtown  
 Houston, Texas



**Garnett S. Stokes**  
 President  
 The University of New Mexico  
 Albuquerque, N.M.



**Andrew Sund**  
 President  
 Heritage University  
 Toppenish, Wash.



Ex-Officio:  
 Antonio R. Flores  
 President and CEO  
 HACU

# CORPORATE AND PHILANTHROPIC COUNCIL

**Joe Mella, Chair**

Vice President  
Finance Division  
Goldman Sachs

**Jorge Caballero, Vice Chair**

Senior Partner - Retired  
Deloitte Tax LLP

**Michael Nettles**

Senior Vice President  
Policy Evaluation and Research  
Educational Testing Service

**David Ortiz**

Diversity & Inclusion Strategist  
Disability Inclusion Program Manager  
Oracle

**Chinwe Abara**

Program Manager,  
Global Diversity, Inclusion and Belonging  
NetApp

**Raul Villarreal**

Area Manager  
General Motors

**Tony Beall**

Director  
Sanford Institute of Philanthropy at  
National University System

**Peter Villegas**

Vice President  
Office of Latin Affairs  
The Coca-Cola Company

**Marcus Cole**

Director  
Future Housing Leaders Program  
Fannie Mae

**Luke Visconti**

Founder and Chairman  
DiversityInc

**Laura Marquez**

Global Lead  
Diversity, Equity and Inclusion Policy  
Google



HACU Corporate and Philanthropic Council meet at HACU's Annual Conference

# MESSAGE FROM THE PRESIDENT/CEO AND CHAIR OF THE GOVERNING BOARD

**M**embership for the Hispanic Association of Colleges and Universities continues to be strong with 509 institutions and school districts, that collectively represent 38 states, the District of Columbia, Puerto Rico, and 10 countries in Latin America and Europe. HACU's international membership included seven new members. Some of these institutions joined following a visit coordinated by HACU, which welcomed a delegation of higher education representatives from Castilla y León, Spain to our national headquarters. The delegates met with higher education representatives and toured the campuses of four San Antonio, Texas area colleges.

Early in the year, the Association announced the inaugural fellows of its Leadership Academy/La Academia de Liderazgo. Twenty-four fellows were selected to this program designed to address the underrepresentation of Hispanics in executive and senior-level positions in higher education. The first cohort is expected to complete the program by July 2020.

HACU's advocacy in 2019 led Congress to make unprecedented investments in Hispanic-Serving Institutions (HSIs) in FY 2020. With the exception of Title V, Part B, the amounts for HSIs represented the highest totals ever. Appropriations details are included on page 10. HACU advocacy efforts also addressed key pieces of legislation. The FUTURE Act was signed into law, permanently restoring mandatory funding to HSIs under Title III, Part F. The Hispanic Education

Resources and Empowerment (HERE) Act, calling for the creation of a new part under Title V of the HEA for a new grant program to support collaboration between HSIs, Emerging HSIs, Hispanic-Serving School Districts (HSSDs) and emerging HSSDs, was introduced by Congressman Joaquin Castro. A Capital Financing Program for HSIs, led by Congressman Tony Cardenas, is expected to culminate in a bill to be introduced soon.

HACU's student programs continue to provide college students leadership development and networking opportunities with employers through events such as the Google Hispanic Student Leadership Summit held at the Google Campus in Austin, Texas, the Emerging Leaders Summit hosted at Concordia University Texas, and the Éxito: CIA Career Exploration Bootcamp held in Washington, D.C.

Programs for high school students, included campus tours and college informational workshops as part of the HACU/U.S. Army University Tour held in San Diego State University. HACU and American Student Assistance also partnered on the Ascending Leaders Forum for high school students to explore career opportunities and senior leadership positions available in higher education. The first of four Forums was hosted on the University of Houston campus.

A milestone event was held in San Antonio to celebrate the 15th Anniversary/Quinceañera of the HACU/Southwest Airlines iLanzate! Travel Awards Program. The anniversary event included 15 past



award recipients who shared how the program made a difference during their college years. Since the inception of the program, 4,000 Southwest Airlines tickets have been awarded to college students across the country to travel home to visit their families.

The HACU National Internship Program, our largest student program, placed an annual total of 520 college students in internships, mostly in federal agencies, nationwide. Due to a partial government shutdown, about 60 students were unable to begin their spring internship assignments. However, an additional 70 internship placements were made with corporate sponsors.

A total of \$241,250 in academic scholarships and leadership awards from HACU partners were awarded to students at HACU-member institutions. Among these awards was the Deloitte Jorge Caballero Student Leadership Award in the amount of \$10,000. Approximately 234 HACU ¡Adelante! Leadership Institute scholarships were also awarded, supported by HACU, Miller Coors and other student track sponsors.

HACU conferences and events provided organized platforms for sharing Hispanic higher education best practices, resources and networking opportunities among colleagues from across the country and around the world.

HACU's 24th National Capitol Forum on Hispanic higher education brought together 194 participants to Washington, D.C., on April 1-2, 2019. The Forum culminated in state delegations of faculty, staff and students visiting their members of Congress on Capitol Hill. The following month, 281 participants attended HACU's 13th International Conference on May 1-3, 2019, in San Juan, Puerto Rico.

HACU's 33rd Annual Conference held in Chicago, Illinois on Oct. 5-7, 2019, drew 1,978 participants. Among the conference highlights was the Town Hall, "Hispanic-Serving Institution: What exactly should that mean?" HACU also recognized Diana Natalicio, Ph.D., as the inductee to HACU's Hall of Champions and the honorees of HACU Awards, featured on page 19.

A pre-conference Youth Leadership Development Forum focused on STEM was held for middle and high school students at the University of Illinois at Chicago. Pre- and post-conference events of our premiere Hispanic higher education conference included the Latino Higher Education Leadership Institute, PreK-12/Higher Education Collaboration Symposium, and Deans' Forum.

These are just a few highlights of the Association's work supported by HACU's staff from its national headquarters in San Antonio, Texas, and regional offices in Sacramento, California and Washington, D.C.

We are fortunate to count on the dedication and vision of HACU's Governing Board members and would like to thank all our past and present board members for their support.

HACU extends its sincere thanks to members completing their terms and for all their contributions during their service to the board: Tomás D. Morales, president of California State University, San Bernardino; Fernando León García, rector of CETYS Universidad, Mexicali, Baja California; Beatriz Espinoza, former president of Coastal Bend College; and Carlos M. Padin Bibiloni, chancellor of Universidad Ana G. Méndez, Recinto de Cupey, San Juan, Puerto Rico.

We would like to recognize the following newly elected officers to the Board: chair, **Monte E. Pérez**, president of Los Angeles Mission College; vice-chair, **Sue Henderson**, president of New Jersey City University; treasurer, **Margaret Venable**, president of Dalton State College; secretary, Mike Flores, chancellor of Alamo Colleges District; and past chair, **Félix V. Matos Rodríguez**, chancellor of The City University of New York.

New Governing Board members include: Adela de la Torre, president of San Diego State University; Reyes M. González, president of St. Augustine College; Emma Grace Hernández Flores, president of Universidad de Iberoamérica, San José, Costa Rica; and David Méndez Pagán, rector of Universidad Ana G. Méndez, Recinto de Gurabo.

We also want to recognize HACU's Corporate and Philanthropic Council. Thanks to the following members for their service as they complete their term: Christine Ortega, Southwest Airlines; Mike Aguilera, Sodexo; and Janet Padilla, Ford. New members to the C&PC are the following: Chinwe Abara, NetApp; David Ortiz, Oracle; Laura Marquez, Google; Marcus Cole, Fannie Mae; and Tony Beall, National University.

Our sincere thanks to all the individuals and organizations whose support has made it possible for HACU to advance the cause of Hispanic higher education success in 2019 and beyond. Thank you to donors of La HACHE de HACU, the Hispanic Alliance to Champion Higher Education, for their contributions to our annual appeal.

Please help us make Hispanic student access and success a priority by spreading the word on your campuses and throughout your networks about HACU's work. Together we are building the future of America.

Cordially,




Antonio R. Flores  
HACU President and CEO




Monte E. Pérez  
HACU Governing Board, Chair  
President, Los Angeles Mission College

# STRENGTHENING OUR VOICES IN NUMBERS

Institutions across the nation and abroad continue to recognize the importance of HACU's mission to champion Hispanic success in higher education. HACU members are committed to improving access to and the quality of postsecondary educational opportunities.

## HACU Membership

HACU's strength and support continues to grow, and in 2019, members included 509 colleges, universities and school districts located in 38 states, the District of Columbia, Puerto Rico, and 10 countries in Latin America and Europe.

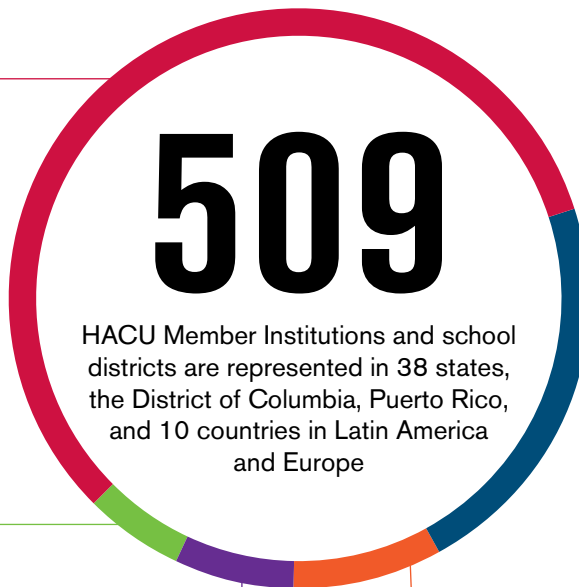
Among the total members, new members included: 23 colleges and universities, 6 Hispanic-Serving School Districts, 16 faculty and staff affiliate members, and 20 student affiliates.

Total membership by category included: 304 Hispanic-Serving Institutions (HSIs); 103 Associate Member Institutions (AMIs); 39 Partner Institutions; 34 International Institutions; 23 Hispanic-Serving School Districts (HSSDs); 6 Educational Affiliates; 42 Faculty and Staff Affiliates; 6 Trustee Affiliates; and 31 Student Affiliates.



(L-R) HACU Senior Vice President of Operations David Ortiz, Concordia University Texas President Donald Christian, HACU Assistant Vice President for Programs, Services and International Affairs Alicia Martinez, and HACU Director of Member Services Richard Montez at Concordia University Texas HSI Celebration on January 16, 2019.

**304**  
HSIs



**103**  
AMIs

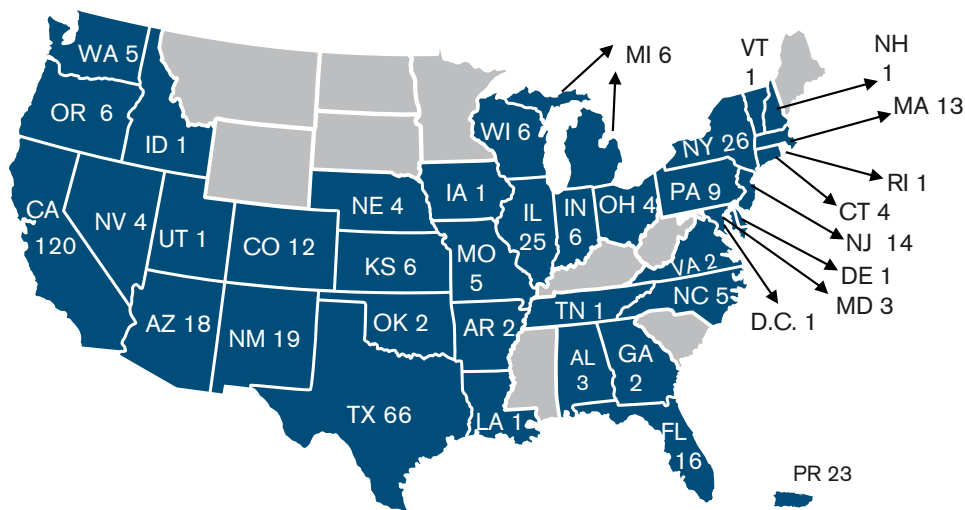
**23**  
HSSDs

**39**  
Partner Institutions

**34**  
International Institutions



# HACU MEMBERS ACROSS THE NATION AND BEYOND



## NATIONAL MEMBER INSTITUTIONS

446 HACU National Institutions located in 38 States, Puerto Rico, and the District of Columbia

## INTERNATIONAL INSTITUTIONS

34 HACU International Institutions located in 10 countries in Latin America and Europe

## HISPANIC-SERVING SCHOOL DISTRICTS

23 HACU HSSD Affiliates located in 10 States

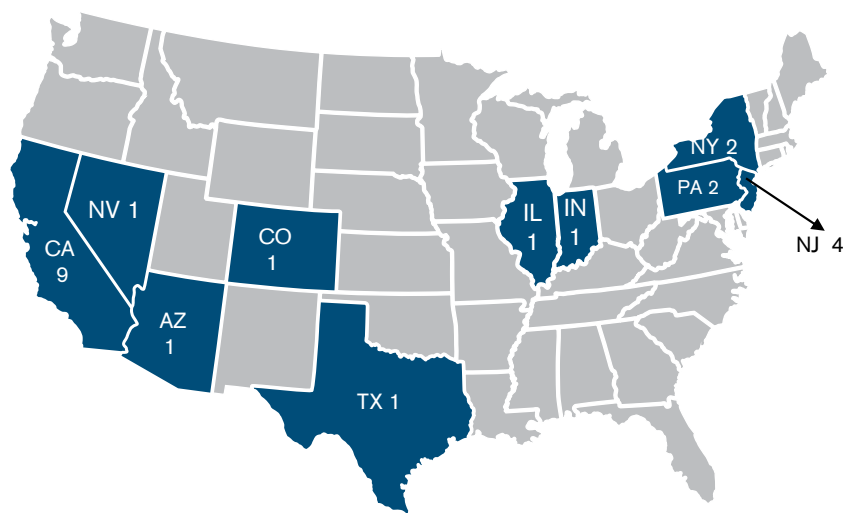


Photo courtesy of Southeastern University. Commencement ceremony on April 26, 2019.



# ADVOCATING FOR HISPANIC HIGHER EDUCATION

Since the first federal definition of Hispanic-Serving Institutions (HSIs) in 1992, HACU’s advocacy efforts have produced over \$3.9 billion for HSIs and Hispanic higher education. Advocating for federal funding for HSIs and issues on Hispanic education remains a central focus.



HACU participates in a Congressional Briefing on Feb. 6, 2019, and is represented by New Jersey City University President Sue Henderson (seated second to the left).

Strategic alliances with other minority-serving organizations continue to be significant in promoting a legislative agenda for higher education. Through alliances with minority-serving, higher education and other national Hispanic organizations, there has been increased awareness and recognition of Hispanic-Serving Institutions (HSIs) needs by Congress and the Administration.

HACU’s online Advocacy Center has been instrumental for education advocates to make their voices heard on public policy issues affecting HSIs and our member colleges and universities. The online center at [hacuadvocates.net](http://hacuadvocates.net), has facilitated communication with lawmakers and their staff. The Advocacy Center holds important policy information, makes periodic policy updates about HACU’s advocacy efforts, facilitates calls to action, and hosts webinars. The Advocacy Center has over 1,624 registrants.

As part of the advocacy collaboration efforts with HACU’s

sister organizations, UNCF, NAFEO, AIHEC, and Asian Pacific American Advocates, The FUTURE Act was signed into law, permanently restoring mandatory funding to HSIs under Title III, Part F. The bill mandates \$255 million of critical funding to be invested in the MSI community. HSIs stand to receive \$94.1 million annually (due to mandatory spending caps). In addition, HACU's efforts for a Capital Financing Program for HSIs, led by Congressman Tony Cardenas, is expected to culminate in a bill to be introduced soon.

HACU remains an active partner with the Washington Higher Education Secretariat, the National Hispanic Leadership Agenda, the Hispanic Education Coalition, the Alliance for Equity in Higher Education, the Committee for Education Funding, the Coalition for Teaching Quality, the National English Learner Roundtable, the Higher Education Task Force and other national organizations with a focus on education.

Advocacy efforts addressed key pieces of legislation, reaching all levels of Hispanic education and workforce development. In the ongoing reauthorization conversations for the Higher Education Act (HEA), HACU worked with Congressman Joaquin Castro, who on July 2019, introduced the Hispanic Education Resources and Empowerment (HERE) Act, calling for the creation of a new part under Title V of the HEA for a new grant program to support collaboration between HSIs, Emerging HSIs, Hispanic-Serving School Districts (HSSDs) and emerging HSSDs for greater student success.

HACU's advocacy in 2019 led Congress to make unprecedented investments for HSIs in FY 2020. The amounts below represent the highest totals ever, except for Title V, Part B.

- **U.S. Department of Education - Title V, Part A (DHSI Program Undergraduate) = \$143.08 million.** FY 2019 funding was \$124.4 million and is an increase of \$18.68 million.
- **U.S. Department of Education - Title V, Part B (PPOHA Program - Graduate) = \$12.84 million.** FY 2019 funding was \$11.2 million and is an increase of \$1.64 million.
- **U.S. Department of Agriculture - NIFA (HSI Education Grants) = \$11.2 million.** FY 2019 funding was \$9.2 million and is an increase of \$2 million.
- **National Science Foundation's HSI Program = \$45 million.** FY 2019 funding was \$40 million and is an increase of \$5 million.

HACU monitored and responded to legislative proposals introduced in the House of Representatives and the Senate by promoting specific legislative language favorable to HSIs and the Hispanic community, such as language in the HERE Act. The Association worked to re-establish the Leadership Group at the U.S. Department of Agriculture consisting of key agency officials and HSI presidents. HACU also serves on committees advising the U.S. Department of State, and the Office of Personnel Management.

## State Advocacy

HACU's Western Regional advocacy efforts for member institutions in Arizona, California, Nevada, Oregon and Washington continue to focus on increasing state level investments in higher education. The Association also supported higher education legislation in the region's state legislatures, including their respective DREAM Acts, student financial aid bills and other college access legislation. HACU continued policy meetings with its California membership to develop policy proposals.



HACU represented at Capitol Hill with leaders from The University of New Mexico Valencia and UNM for passage of the FUTURE Act.



Students attending Advocacy 101 Session to prepare for state delegation visits to Capitol Hill.

# OPENING DOORS TO A DIVERSE WORKFORCE

**HACU is dedicated to increasing Hispanic employment in the federal workforce and corporate America, a demographic which remains underrepresented in these sectors.**

Since 1992, the HACU National Internship Program has provided college students the opportunity to gain career experience while completing their undergraduate and graduate education.

In 2019, HACU placed students in 520 paid internship assignments. The total number of internship placements by semester were: 129 interns for the spring; 224 interns in the summer; and 167 interns in the fall.

Students served in 325 federal internships in the Washington, D.C. area, 193 federal field offices throughout the United States, and two corporate internships nationwide under this current program.

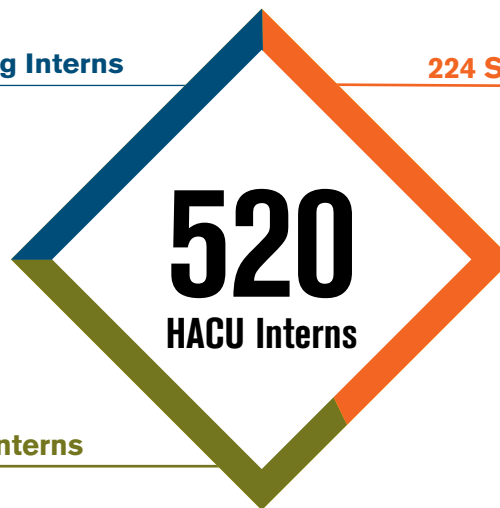
Approximately 248 of the total interns were Hispanic students. Women made up more than half of participants with a total of 319. The average grade point of all interns was 3.4 and the average age was 24.

Interns represented colleges and universities from 29 states, Puerto Rico and the District of Columbia. The locations with the highest concentration of students participating were from Georgia (27) California (56), Puerto Rico (63), Texas (83) and Maryland (98).

**129 Spring Interns**  
**25%**

**224 Summer Interns**  
**43%**

**167 Fall Interns**  
**32%**



To date, the HACU National Internship Program has made more than 13,000 internship placements to students and has served as a pipeline for Hispanics to careers in the federal government and private sector.

Many students who have benefited from the internship program and other HACU student programs are now giving back by serving as a resource through the HACU Alumni Association. Additionally, programs such as the HACU Alumni Ambassadors Program and the HACU Leaders in Residence Program provide additional support and information to prospective applicants.



2019 Fall Interns



2019 Spring interns

## Federal Sponsors

**Federal Deposit Insurance Corporation**

**Federal Reserve Board**

**Library of Congress**

**National Science Foundation**

**Pension Benefit Guaranty Corporation**

**U.S. Agency for Global Media**

**U.S. Department of Agriculture**

Agricultural Marketing Service  
 Agricultural Research Service  
 Animal and Plant Health Inspection Service  
 Economic Research Service  
 Food and Nutrition Service  
 Foreign Agriculture Services  
 Forest Service  
 National Institute of Food and Agriculture  
 Natural Resources Conservation Service  
 Office of Partnership and Public Engagement  
 Office of Secretary

**U.S. Department of Commerce**

U.S. Census Bureau

**U.S. Department of Health and Human Services**

Centers for Disease Control  
 Food and Drug Administration  
 National Institutes of Health CC  
 National Institutes of Health OD  
 Substance Abuse & Mental Health Services Administration

**U.S. Department of the Interior**

Bureau of Land Management

**U.S. Department of the Treasury**

Departmental Offices  
 Office of the Comptroller of the Currency  
 U.S. Mint

## Corporate Internships

In 2018, HACU began offering a more comprehensive way for corporate sponsors to hire students. Corporate sponsors select students to interview from the larger pool of students that participate in HACU's ¡Adelante! Leadership Institute, HACU National Internship Program and HACU Regional Summits. The new package of programs and services is intended to increase the overall hiring of HACU students for corporate internships or full-time positions. Aside from the two placements reported under the HACU National Internship Program, approximately 70 additional corporate internship placements were made under this new model.

## Corporate Sponsors

**Bridgewater**

**Cintas**

**Deloitte**

**Eli Lilly and Company**

**Environmental Defense Fund**

**Fannie Mae-Future Housing Leaders**

**Federal Reserve Bank - Dallas**

**Federal Reserve Bank - Minneapolis \***

**Google**

**Kellogg's**

**NetApp**

**Oracle**

**Thrivent Financial \***

**Travelers**

**US Bank**

\* Partners under the standard HNIP program model.

# INVESTING IN COLLEGE STUDENTS

**Restoring America as the first in the world in college graduation rates begins with working with students from high school to college to ensure they have the educational and financial resources needed to pursue and complete their higher education goals.**

## **HACU Scholarship Program**

HACU partnerships with corporations have made it possible to award deserving students with scholarships such as the Denny's Hungry for Education Scholarship, Domino's Scholarship, Oracle Scholarship, Kia Motors America, Inc. Scholarship, Ford College Community College (C3) Scholarship, Miller Lite Brewed to be Bright Scholarship, Coors Light Climb On Scholarship and Café Bustelo El Café del Futuro Scholarship. As a result, HACU awarded 83 scholarships totaling \$231,250 to students at HACU-member institutions. Additionally, Deloitte awarded the Jorge Caballero Student Leadership Award, totaling \$10,000. This brought the total of scholarships and leadership awards to \$241,250. These companies continue to make a difference by investing in today's college students to ensure a diverse workforce for the future of our country.

## **HACU Emerging Leaders Summit**

HACU hosted an Emerging Leaders Summit to prepare college students for corporate internships and career opportunities in science, technology, engineering, and mathematics (STEM) finance, accounting, business, communications and marketing fields. The Summit offered approximately 100 students from 18 local area colleges and universities the opportunity to meet with business professionals and corporate representatives on Sept. 17, 2019, at Concordia University Texas.

## **Hispanic Student Leadership Summit**

HACU partnered with Google to co-host the Hispanic Student Leadership Summit at the Google Campus on April 5-6, 2019, in Austin, Texas. Fifty undergraduate students majoring in engineering and computer science from across the U.S., including Puerto Rico, participated in the summit. This summit brought Hispanic student leaders together to share innovative and best practices with one another, as well as collaborate with Google's Hispanic leadership to benefit their universities, student organizations, and communities.

## **HACU ¡Adelante! Leadership Institute Scholarships**

Approximately 234 students received scholarships to attend HACU's ¡Adelante! Leadership Institute held in conjunction with the Annual Conference. The scholarships included 174 that were awarded through 33rd Annual Conference sponsorships. Sixty of the students were sponsored by HACU and are now part of HACU's Leader-in-Residence Program.

## **HACU Leader-in-Residence Program**

The HACU Leader-in-Residence Program selected 60 students from HACU member institutions to serve as ambassadors for HACU within their campus and communities. Aside from promoting HACU and attending the annual conference, students also participated in leadership development activities offered through webinars and a mentoring component where students met with their deans/faculty advisors to discuss their goals and project implementation.

## **HACU/U.S. Army University Tour Program**

The HACU/U.S. Army University Tour visited San Diego State University on Feb. 4-6, 2019, to offer workshops about the college admissions process and financial aid options for students. The event brought together 303 high school students, and 13 counselors. From 2009 to 2019, the HACU/U.S. Army University Tours Program, has served 10,795 high school students and 702 high school administrators including counselors and teachers.

## **HACU/Southwest ¡Lánzate! Travel Awards Program**

Since 2005, Southwest has championed Hispanic success in higher education by donating over 4,000 tickets to students across the country. HACU and Southwest Airlines celebrated the 15th Anniversary/Quinceañera of The Dándole Alas a Tu Éxito/Giving Flight to Your Success™ ¡Lánzate! Travel Award Program in San Antonio, Texas on June 26, 2019. Fifteen past recipients of the program were in attendance. Many of the recipients shared their gratitude and personal stories of how the program helped them with a visit back home as they completed their college journey.

In 2019, Southwest Airlines awarded 187 recipients from 120 different schools eight tickets each. The ¡Lánzate! program is designed to help college students living away from home to be able to return to their hometown to visit with families.

## **EXITO: CIA Career Exploration Boot-Camp**

HACU partnered with the Central Intelligence Agency for the EXITO: CIA Career Exploration Boot-Camp in Washington, D.C. The event was held in June 2019. Thirty freshman students from HACU member institutions received travel scholarship to attend the program. The students participated in a two-day career exploration program with CIA hiring managers, staff and organizational leaders.

## **HACU/ASA Ascending Leaders Forum**

HACU and American Student Assistance hosted the first Ascending Leaders Forum on the University of Houston campus on Nov. 20, 2019. The event welcomed 491 high school students interested in learning about career opportunities available in administration and staff positions at colleges and universities. The initiative is designed to increase awareness and promote diversity in senior leadership positions at colleges and universities. Students attended presentations about a variety of career opportunities and met with staff from admissions, financial aid and career services offices, toured the campus and also met college students who provided information about student life.

# PREPARING THE NEXT GENERATION OF HIGHER EDUCATION LEADERS

Increasing Hispanic representation in presidential and senior leadership positions in higher education is crucial. Despite the unprecedented growth of U.S. Hispanic college student enrollment, the percentage of Hispanic university presidents has declined from 4.5 percent in 2006 to 3.9 percent in 2016.

HACU launched its inaugural Leadership Academy/La Academia de Liderazgo with 24 Fellows in 2019. The one-year program has provided Fellows with an array of leadership development seminars to prepare them for senior-level and executive roles in the full spectrum of institutions of higher learning, but with a focus on leadership positions within Hispanic-Serving Institutions (HSIs) and Emerging HSIs.

The orientation webinar took place September 18 and the first of three seminars took place Oct. 2-8, 2019, in Chicago Illinois, in conjunction with HACU's 33<sup>rd</sup> Annual Conference. More than a dozen nationally recognized current and emeriti presidents and senior-level administrators are among those serving on the faculty. The Fellows continue their program through July 2020.

The founding members of HACU's inaugural Leadership Academy are: American Federation of Teachers; California State University, Fresno; Case Western Reserve University; Colorado State University-Pueblo; Dallas County Community College District; DePaul University; New Jersey City University; Northern Essex Community College; Montclair State University; Morton College; Northeastern Illinois University; St. Augustine College; St. Thomas University; Universidad Central del Caribe; Universidad Mayor (Chile); University of California, Davis; University of California, San Diego; University of Houston-Downtown; University of Illinois at Chicago; University of Michigan; The University of Texas at Austin; and The University of Texas at San Antonio.

## INAUGURAL FELLOWS Class of 2019-2020

**Floralba Arbelo, Ed.D.**  
Albizu University

**Saúl Jiménez Sandoval, Ph.D.**  
California State University, Fresno

**Suzanne M. Rivera, Ph.D.**  
Case Western Reserve University

**Derek López, Ph.D.**  
Colorado State University-Pueblo

**Javier E. Olguín, Ph.D.**  
Dallas County Community College District

**Oscar M. López**  
Dallas County Community College District

**Elizabeth Ortiz, Ed.D.**  
DePaul University

**Daniel López, Jr., Ph.D.**  
Harold Washington College, City Colleges of Chicago

**Katia Paz Goldfarb, Ph.D.**  
Montclair State University

**Marisol Velázquez**  
Morton College

**José Balda**  
New Jersey City University

**Noemí Custodia-Lora, Ph.D.**  
Northern Essex Community College

**Carmen Arellano, Psy.D.**  
St. Augustine College

**Luis C. Fernández-Torres, Ph.D.**  
St. Thomas University

**Victor B. Sáenz, Ph.D.**  
The University of Texas at Austin

**Enrique Alemán, Jr., Ph.D.**  
The University of Texas at San Antonio

**Waleska Crespo-Rivera, Ph.D.**  
Universidad Central del Caribe

**Alex Slater, Ph.D.**  
Universidad Mayor (Chile)

**Mario Herane**  
Universidad Mayor (Chile)

**Raquel E. Aldana, J.D.**  
University of California, Davis

**Olivia A. Graeve, Ph.D.**  
University of California, San Diego

**Daniel Villanueva, Jr.**  
University of Houston-Downtown

**Rudy M. Molina, Jr., Ph.D.**  
University of Illinois at Chicago

**Ana Catalina Ormsby**  
University of Michigan



2019 Capitol Forum Participants

# INCREASING THE UNDERSTANDING OF HISPANIC HIGHER EDUCATION

## HACU National Capitol Forum

HACU's 24<sup>th</sup> National Capitol Forum on Hispanic Higher Education registered 194 individuals for the event, which took place in Washington, D.C., April 1-2, 2019. The Forum served as an opportunity to advocate for federal legislation and support for Hispanic higher education. Approximately 124 representatives from HACU member institutions had the opportunity to meet with key members of the House and Senate during visits to Capitol Hill.

**Congressional Sponsor**  
Educational Testing Service

**Ambassador Sponsor**  
Texas A&M University, The Bush School of Government & Public Service

**Media Partners**  
HigherEdJobs.com  
Hispanic Network Magazine  
Diversity in STEAM Magazine

**In-Kind Sponsor**  
Agency Nine, an advertising and design company  
Higher Education Recruitment Consortium

## HACU International Conference

HACU's 13th International Conference, *University Resilience and Renaissance: The Challenge of Climate Change and Other Global Shifts*, took place May 1-3, 2019, in San Juan, Puerto Rico at the Sheraton Puerto Rico Hotel & Casino.

The Opening Ceremony included remarks by the Secretary of State of Puerto Rico, Luis Rivera Marín. A total of 281 participants attended the biennial conference, which included plenary sessions and eighteen concurrent workshops. A Student Track, offered in conjunction with the conference, included a visit to area campuses for panel discussions and workshops related to study abroad and other international education opportunities.

**Title Sponsor**  
EDP University of Puerto Rico

**Diamond Sponsor**  
Universidad Ana G. Méndez System

**Gold Sponsor**  
InterAmerican University of Puerto Rico System

**Bronze Sponsor**  
Southwest Airlines, The Official Airline of HACU's 13<sup>th</sup> International Conference

**In-Kind Sponsors**  
InterAmerican University of Puerto Rico – Arecibo  
InterAmerican University of Puerto Rico – San Germán Campus  
University of Puerto Rico – Mayagüez  
Compañía de Turismo Puerto Rico



# HACU'S PREMIER CONFERENCE ON HISPANIC HIGHER EDUCATION

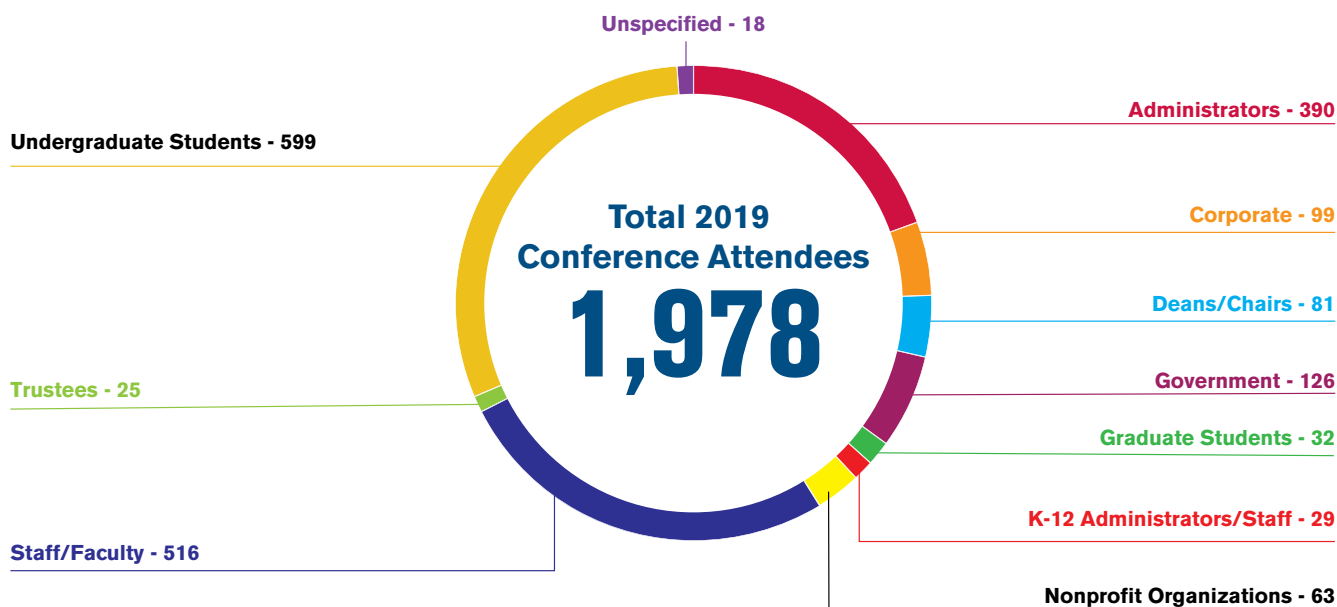
## HACU Annual Conference

HACU's 33rd Annual Conference, under the theme "Championing Hispanic Higher Education Success: Meeting the Challenge of Prosperity and Equality," held in Chicago, Illinois, brought together a total of 1,978 attendees on Oct. 5-7, 2019.

A total of 599 of the registrants were undergraduate students participating in HACU's iAdelante! Leadership Institute, the student track of HACU's Annual Conference, which provides career and leadership development workshops.

The Annual Conference featured 54 workshops in a wide range of topics related to the conference theme, and a variety focusing on Hispanic-Serving Institutions.

Conference attendees included representatives from colleges and universities, school districts, public policy organizations, and government, corporate and philanthropic sectors.





Panelists of HACU's Town Hall discussed "Hispanic-Serving Institution: What exactly should that mean?" The International Plenary topic focused on "International Partnerships: Joint and Dual Degree Programs, Faculty/Student Exchanges, Joint Research Projects and More."

HACU Exhibit Hall featured 113 exhibitors that included national and international colleges and universities, federal agencies, major corporations, and nonprofit agencies. A free College and Career Fair offered workshops for college bound students and their families and was open to the public.

# PRE- AND POST- CONFERENCE EVENTS

## Youth Leadership Development Forum

HACU's "Students in STEM" Youth Leadership Development Forum was hosted on Oct. 4 at the University of Illinois at Chicago. Over 500 local middle and high school students participated in the one-day event, which included STEM exploration activities. Students from six school districts and 15 schools were among the participants and learned about UIC STEM initiatives and research projects; networked with STEM students and faculty; and explored a variety of STEM related careers through interactive experiences.

## HACU PreK-12/ Higher Education Collaboration Symposium

The Fifth Pre-K-12 Symposium on Oct. 5 drew 76 participants to the one-day event. The panel discussions included: "Using Data to Address Inequity," "Creating STEM Career Pathways," and "Addressing Inequities through Collaborative Partnerships." The luncheon speaker Jesse Ruiz, Deputy Governor for the State of Illinois, addressed the changing landscape of education in Illinois. An update on the status of the Hispanic Educational Resources and Empowerment (HERE) act and future advocacy plans was provided by HACU government relations staff. The event was offered as a pre-conference event of HACU's Annual Conference.

## HACU Latino Higher Education Leadership Institute

The 18<sup>th</sup> Annual Latino Higher Education Leadership Institute on Oct. 5 drew 128 registered participants. The Institute, designed to provide a forum for emerging higher education leaders, included presentations and workshops to discuss challenges and explore strategies for making higher education institutions more responsive to the educational needs of Latinos and other underrepresented groups. The Institute was offered as a pre-conference event of HACU's Annual Conference.

## HACU Deans' Forum

The Eighth Deans' Forum on Hispanic Higher Education on Oct. 8 included 59 participants. Panelists discussed the theme "How Institutions are Increasing Equity and Driving Economic and Social Mobility." The event was offered as a post-conference event of HACU's Annual Conference.

## California HSI Summit

More than 80 higher education representatives participated in a California Hispanic-Serving Institutions (HSIs) Summit convened by HACU to discuss the implementation of the California Community College Student Centered Funding Formula, a funding proposal HACU initially introduced in the California state legislature, after several years of conversations with California HACU members about ways the Association can best impact funding for HSIs in the state. In addition, HACU hosted a panel on how California's K-12 and higher education institutions can work more closely together on closing the achievement and opportunity gaps for Latino students. Finally, a presentation was made by HACU staff on the year's advocacy work at the California state legislature.

# 33RD ANNUAL CONFERENCE SPONSORS AND PARTNERS

## Diamond Sponsors

Ford Motor Company Fund  
U.S. Department of Agriculture

## Platinum Sponsor

Sanford Programs at National University

## Gold Sponsors

U.S. Central Intelligence Agency  
Fannie Mae - Future Housing Leaders  
Google, Inc.  
MillerCoors  
NetApp  
Oracle Corporation  
Southwest Airlines, The Official Airline of HACU's 33<sup>rd</sup>  
Annual Conference  
U.S. Army ROTC Cadet Command

## Silver Sponsors

Coca-Cola  
National Oceanic and Atmospheric Administration

## Bronze Sponsors

Environmental Defense Fund  
Morton College  
Sodexo  
Sonoma State University  
TIAA

## Media Partners

Diverse Issues In Higher Education  
DiversityComm, Inc.  
HigherEdJobs.com  
Hispanic Outlook on Education Magazine  
Insight Into Diversity  
Latina Style Magazine, Inc.  
Motivos Magazine  
Negocios Now  
Spanish Public Radio

## In-Kind Sponsors

Congressional Hispanic Caucus Institute  
Higher Education Recruitment Consortium  
Society of Hispanic Professional Engineers

## HACU ¡Adelante! Leadership Institute Title Sponsor

MillerCoors

## HACU ¡Adelante! Leadership Institute Sponsors

California Lutheran University  
California State University, Fullerton  
California State University, Northridge  
Cal Poly Pomona Huntley College of Agriculture  
Central Michigan University  
Chaffey College  
CINTAS Corporation  
Cochise College  
Federal Deposit Insurance Corporation  
Florida Atlantic University  
Hudson County Community College  
Kellogg's  
MGM Resorts International  
New Jersey City University  
Pima Community College  
Polk State College  
Sonoma State University  
Texas A&M University - The Bush School of Government &  
Public Service  
Texas A&M International University  
Texas Lutheran University  
U.S. Bank  
U.S. Department of Energy  
University of Arizona – Douglas  
University of Arizona – Yuma Campus  
University of California, San Diego

## HACU ¡Adelante! Leadership Institute Portfolio Sponsor

Denny's

## Cyber Café Sponsor

General Motors

## PreK-12 Higher Education Collaboration Symposium, Title Sponsor

Sanford Programs at National University

## Youth Leadership Development Forum

American Student Assistance  
General Motors  
University of Illinois at Chicago

## Deans' Forum

American Federation of Teachers

# CONGRATULATIONS TO THE 2019 HACU HONOREES



## HACU Hall of Champions

**Diana Natalicio, Ph.D.**  
President Emerita  
The University of Texas at El Paso

### President's Award of Excellence



**Félix Matos Rodríguez, Ph.D.**  
Chancellor  
The City University of New York (CUNY)

### Lifelong Leadership Award



**Raymund Paredes**  
Commissioner  
The Texas Higher Education Coordinating Board (THECB)

### Outstanding Private Sector Partner Award



### Outstanding HACU-Member Institution



(San Antonio, Texas)

### Exemplary Policy/Advocacy Leadership Award



**The Honorable José E. Serrano**  
U.S. Representative

### Outstanding Public Sector Partner Award



(Front row, third from left) Christine Ortega, senior advisor for international community affairs and grassroots at Southwest Airlines (front, fifth from left) HACU President and CEO Antonio R. Flores with selection committee members and past recipients of the ¡Lázanate! / Take Off! Travel Program during a 15th Anniversary event celebration held on June 26, 2019.

# Soy Parte de... I'm Part of...

HISPANIC ALLIANCE TO CHAMPION HIGHER EDUCATION

## la HACHE de HACU

HISPANIC ASSOCIATION OF COLLEGES AND UNIVERSITIES

**HACU wishes to acknowledge the generosity of the following donors who have become part of La HACHE de HACU in the 2019 fiscal year by making a gift to the Association's annual appeal. This list does not include anonymous donors.**

### **Leader's Circle**

Joseph I. Castro, President at California State University, Fresno  
Antonio Flores

### **President's Circle**

Jorge Caballero, Senior Partner  
Retired - Deloitte  
Sue Henderson  
Iron Mountain – HOLA, Hispanic Employee Resource Group  
Monte E. Pérez  
Robert Perkowitz

### **Advocates Circle**

Olga Hugelmeyer  
Tomás D. Morales  
Amy Reinholds

### **Benefactor's Circle**

Michael Amiridis  
Kathryn Barrera  
Imelda Bosquez  
Beatriz Espinoza  
Ruben Michael Flores  
Fernando León García  
Magda Gonzalez  
Maria Harper-Marinick  
Sandy & Nick Holt  
Maldonado Family  
Juan Muñoz  
David and Sarah Ortiz  
Carlos M. Padín  
Erica M. Romero  
Garnett S. Stokes  
Andrew Sund  
Gloria V. Webber

### **Partner's Circle**

Garry Castellanos  
Reynaldo Decerega  
Tito Guerrero, III  
Félix Matos Rodríguez  
Joe Mella  
Lucy Perez  
Norma Jean Revilla-García  
Margaret Venable

### **Patron's Circle**

Cris Bazaldua  
Maria de Lourdes Bird  
Gastón Cantú  
Eduardo Martinez  
Ray Parr

### **Friend of HACU**

Veronica Aguilar  
Lorena Blanco-Silva  
Charles Coats  
Mary Beth Gonzales  
Mario Gonzalez  
Noel Guerrero  
Steven Mansbach  
Darlene Martin  
Richard Montez  
Jennifer Nuñez  
Victor Olivares  
Eva Rodriguez  
Olivia Vasquez

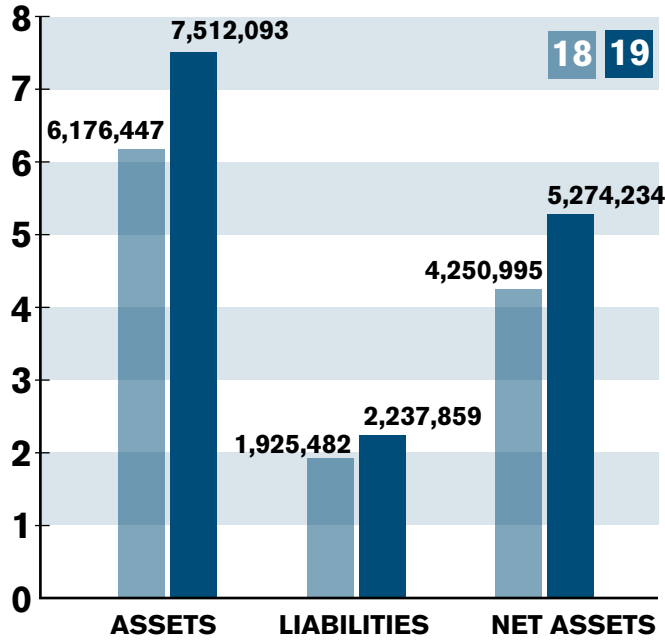
### **Combined Federal Campaign**

Josue Andujar-Valentin  
Anthony Cano  
Maricela Constantino  
Cynthia Cuellar  
Erik Duran  
Elizabeth Fuentes  
Barbara Garcia  
Ruth Hurtado-Day  
Lidia Lopez  
Oscar Mariona-Acosta  
Roger Mireles  
Sidia Nelson  
Cristina Nochetto  
Reinaldo Picon-Colon  
Guadalupe Ramirez  
Margaret Salas  
Lisette Soria  
Sylvia Spengler  
Shanida Tucker

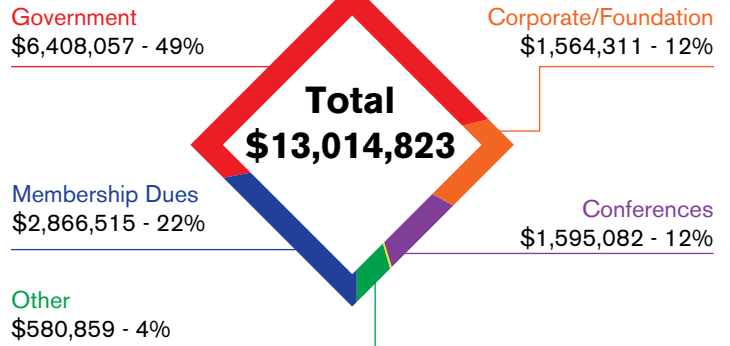
# FINANCIALS

The following information was extracted from HACU's 2019 financial audit by the accounting firm of Armstrong, Vaughan & Associates, P.C. For a complete copy of HACU's 2019 audited Financial Statements, contact Magda Gonzalez at mgonzalez@hacu.net or (210) 692-3805.

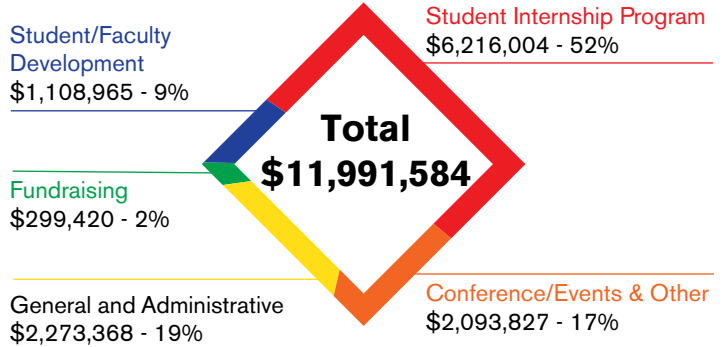
## Statement of Financial Position



## 2019 Revenues



## 2019 Expenditures



## Year Ended December 31, 2019

	Student/Faculty Develop./Scholar.	Student Internship Prog	Conf/Events & Other	Total	General & Admin	Fundraising	Total
<b>REVENUES</b>							
Dues					\$2,866,515		\$2,866,515
Federal Contract Revenue	\$100,000	\$6,178,057	\$130,000	\$6,408,057			\$6,408,057
Corporate/Foundations	\$923,150		\$640,094	\$1,563,244		\$1,067	\$1,564,311
Conference Fees	\$127,147		\$1,467,934	\$1,595,082			\$1,595,082
Investment Revenue					\$348,815		\$348,815
Individuals						\$24,303	\$24,303
Other	\$112,900		\$93,550	\$206,450	\$1,291		\$207,741
<b>Total Revenues</b>	<b>\$1,263,197</b>	<b>\$6,178,057</b>	<b>\$2,331,578</b>	<b>\$9,772,833</b>	<b>\$3,216,621</b>	<b>\$25,370</b>	<b>\$13,014,823</b>

## EXPENDITURES

Staff/Intern Compensation	\$315,557	\$4,196,827	\$218,743	\$4,731,127	\$2,372,101	\$254,876	\$7,358,104
Conference Expense/Travel	\$452,332	\$241,867	\$1,739,291	\$2,433,489	\$89,059	\$2,468	\$2,525,016
Consultants/Professional Services	\$26,434	\$102,201	\$15,670	\$144,305	\$140,694	\$4,760	\$289,759
Insurance					\$26,670		\$26,670
Advertising/Publications	\$6,217	\$3,813	\$82,011	\$92,041	\$55,837	\$2,738	\$150,616
Leases and Rentals		\$319,715		\$319,715	\$391,292		\$711,007
Scholarships/Stipends	\$228,750			\$228,750			\$228,750
Telephone, Supplies, Equipment and Repairs	\$2,379	\$23,274	\$18,215	\$43,868	\$112,919	\$19,156	\$175,943
Interest/Bank Fees	\$140	\$35,323	\$70	\$35,533	\$65,192	\$70	\$100,796
Other Line Items	\$33,309	\$164,218	\$19,828	\$217,355	\$170,717	\$15,352	\$403,423
Transfers to Grantess	\$21,500			\$21,500			\$21,500
Indirect Cost Recovery	\$22,346	\$1,128,767		\$1,151,113	(\$1,151,113)		
<b>Total Expenditures</b>	<b>\$1,108,965</b>	<b>\$6,216,004</b>	<b>\$2,093,827</b>	<b>\$9,418,796</b>	<b>\$2,273,368</b>	<b>\$299,420</b>	<b>\$11,991,584</b>



HACU Governing Board gathered for a meeting prior to HACU's Annual Conference

# HACU MEMBERS

## HACU National Institutions

**446 HACU National Institutions in 38 States, Puerto Rico, and the District of Columbia as of December 31, 2019**

### Hispanic-Serving Institutions (HSI)

A nonprofit, accredited college, university or system in the U.S. or Puerto Rico, where total Hispanic enrollment constitutes a minimum of 25 percent of the total enrollment at the undergraduate or graduate level or both.

### Associate Member Institution (AMI)

A nonprofit, accredited college, university or system in the U.S. or Puerto Rico, where at least 1,000 Hispanic students are enrolled, or total Hispanic enrollment constitutes at least 10 percent of the total enrollment at the undergraduate or graduate level or both.

### Partner Institution (Partner)

A nonprofit, accredited college, university, or system in the U.S. or Puerto Rico, where total Hispanic enrollment constitutes less than 10 percent of the total enrollment.

### Alabama (3)

Northeast Alabama Community College (AMI)  
Stillman College (Partner)  
The University of Alabama at Birmingham (Partner)

### Arizona (18)

Arizona State University (AMI)  
Arizona Western College (HSI)  
Chandler-Gilbert Community College (HSI)  
Cochise College (HSI)  
College of Applied Science & Technology (HSI)  
Estrella Mountain Community College (HSI)  
GateWay Community College (HSI)  
Glendale Community College (HSI)  
Maricopa Community Colleges (HSI System/District)  
Mesa Community College (HSI)  
Midwestern University (Partner)  
Mohave Community College (AMI)  
Northern Arizona University (AMI)  
Northern Arizona University - Yuma Branch Campus (HSI)  
Phoenix College (HSI)  
Pima Community College (HSI System/District)  
South Mountain Community College (HSI)  
The University of Arizona (HSI)

### Arkansas (2)

Arkansas State University (Partner)  
Cossatot Community College of the University of Arkansas (HSI)

### California (120)

Allan Hancock College (HSI)  
Antelope Valley College (HSI)  
Antioch University, Santa Barbara (HSI)  
Azusa Pacific University (HSI)  
Bakersfield College (HSI)  
Cabrillo College (HSI)  
California Lutheran University (HSI)  
California Polytechnic State University, San Luis Obispo (AMI)  
California State Polytechnic University, Pomona (HSI)  
California State University, Channel Islands (HSI)  
California State University System Office (HSI System/District)  
California State University, Bakersfield (HSI)  
California State University, Chico (HSI)  
California State University, Dominguez Hills (HSI)  
California State University, East Bay (HSI)  
California State University, Fresno (HSI)  
California State University, Fullerton (HSI)  
California State University, Long Beach (HSI)  
California State University, Los Angeles (HSI)  
California State University, Monterey Bay (HSI)

## HACU National Institutions

California State University,  
Northridge (HSI)  
California State University,  
Sacramento (HSI)  
California State University,  
San Bernardino (HSI)  
California State University,  
San Marcos (HSI)  
California State University,  
Stanislaus (HSI)  
Cerro Coso Community College (HSI)  
Chapman University (AMI)  
Charles R. Drew University of Medicine  
and Science (HSI)  
Citrus College (HSI)  
City College of San Francisco (HSI)  
Clovis Community College (HSI)  
Coast Community College District  
(HSI System/District)  
College of the Desert (HSI)  
Concordia University Irvine (AMI)  
Crafton Hills College (HSI)  
Cuesta College (HSI)  
East Los Angeles College (HSI)  
El Camino College (HSI)  
Fresno City College (HSI)  
Fresno Pacific University (HSI)  
Fullerton College (HSI)  
Grossmont College (HSI)  
Hartnell College (HSI)  
Holy Names University (HSI)  
Humboldt State University (HSI)  
Imperial Valley College (HSI)  
John F. Kennedy University (AMI)  
Keck Graduate Institute (Partner)  
Kern Community College District  
(HSI System/District)  
La Sierra University (HSI)  
Las Positas College (HSI)  
Long Beach City College (HSI)  
Los Angeles Harbor College (HSI)  
Los Angeles Mission College (HSI)  
Los Angeles Pierce College (HSI)  
Los Angeles Valley College (HSI)  
Loyola Marymount University (HSI)  
Mendocino College (HSI)  
Mills College (HSI)  
MiraCosta Community College  
District (HSI)  
Mission College (HSI)  
Modesto Junior College (HSI)  
Monterey Peninsula College (HSI)  
Moorpark College (HSI)  
Moreno Valley College (HSI)  
Mount Saint Mary's University (HSI)  
Mt. San Antonio College (HSI)

Mt. San Jacinto College (HSI)  
Napa Valley College (HSI)  
National University (HSI)  
Norco College (HSI)  
Notre Dame de Namur University (HSI)  
Occidental College (AMI)  
Oxnard College (HSI)  
Pacific Oaks College (HSI)  
Palomar College (HSI)  
Pasadena City College (HSI)  
Porterville College (HSI)  
Reedley College (HSI)  
Rio Hondo College (HSI)  
Riverside City College (HSI)  
Riverside Community College District (HSI  
System/District)  
Saint Mary's College of California (HSI)  
San Bernardino Community College  
District (HSI System/District)  
San Bernardino Valley College (HSI)  
San Diego Community College District  
(HSI System/District)  
San Diego State University (HSI)  
San Diego State University, Imperial Valley  
Campus (HSI)  
San Francisco State University (HSI)  
San Joaquin Delta College (HSI)  
San José City College (HSI)  
San José State University (HSI)  
Santa Clara University (AMI)  
Santa Monica College (HSI)  
Sonoma State University (HSI)  
Southwestern College (HSI)  
Southwestern Law School (HSI)  
State Center Community College District  
(HSI System/District)  
University of California, Davis (HSI)  
University of California, Irvine (HSI)  
University of California,  
Los Angeles (AMI)  
University of California, Merced (HSI)  
University of California, Riverside (HSI)  
University of California, San Diego (AMI)  
University of California, San Francisco  
(AMI)  
University of California, Santa Barbara  
(HSI)  
University of California, Santa Cruz (HSI)  
University of La Verne (HSI)  
University of San Diego (AMI)  
University of Southern California (AMI)  
Vanguard University (HSI)  
Ventura College (HSI)  
Ventura County Community College  
District (HSI System/District)  
West Hills College Coalinga (HSI)

West Hills College Lemoore (HSI)  
West Hills Community College District  
(HSI System/District)  
West Los Angeles College (HSI)  
Whittier College (HSI)  
Woodland Community College (HSI)

### Colorado (12)

Adams State University (HSI)  
Aims Community College (HSI)  
Colorado College (Partner)  
Colorado State University–Pueblo (HSI)  
Community College of Aurora (HSI)  
Community College of Denver (HSI)  
Emily Griffith Technical College (HSI)  
Metropolitan State University of  
Denver (HSI)  
Morgan Community College (HSI)  
Pueblo Community College (HSI)  
The University of Northern Colorado (AMI)  
University of Colorado Denver | Anschutz  
Medical Campus (HSI)

### Connecticut (4)

Goodwin College (HSI)  
Naugatuck Valley Community College (HSI)  
Southern Connecticut State  
University (Partner)  
Western Connecticut State University (AMI)

### Delaware (1)

University of Delaware (AMI)

### District of Columbia (1)

The Catholic University of America (AMI)

### Florida (16)

Barry University (HSI)  
Broward College (HSI)  
Florida Atlantic University (HSI)  
Florida Gulf Coast University (AMI)  
Florida International University (HSI)  
Hillsborough Community College (HSI)  
Hodges University (HSI)  
Lynn University (AMI)  
Miami Dade College (HSI)  
New College of Florida (AMI)  
Nova Southeastern University (AMI)  
South Florida State College (HSI)  
Southeastern University (AMI)  
St. Thomas University (HSI)  
University of Central Florida (HSI)  
Valencia College (HSI System/District)

### Georgia (2)

Dalton State College (HSI)  
Emory University (AMI)



**Idaho (1)**

Boise State University (AMI)

**Illinois (25)**

Aurora University (HSI)  
 Chicago State University (Partner)  
 College of DuPage (HSI)  
 Concordia University Chicago (HSI)  
 DePaul University (AMI)  
 Dominican University (HSI)  
 Governors State University (AMI)  
 Joliet Junior College (HSI)  
 Lewis University (AMI)  
 McHenry County College (AMI)  
 Monmouth College (AMI)  
 Moraine Valley Community College (AMI)  
 Morton College (HSI)  
 National Louis University (HSI)  
 Northeastern Illinois University (HSI)  
 Northern Illinois University (AMI)  
 Northwestern University (AMI)  
 Saint Xavier University (HSI)  
 St. Augustine College (HSI)  
 Triton College (HSI)  
 University of Illinois at Chicago (HSI)  
 University of Illinois, Urbana-Champaign (AMI)  
 University of St. Francis (AMI)  
 Waubesa Community College (HSI)  
 Wilbur Wright College, City Colleges of Chicago (HSI)

**Indiana (6)**

Goshen College (AMI)  
 Indiana State University (Partner)  
 Indiana University Northwest (AMI)  
 Indiana University South Bend (AMI)  
 Purdue University (AMI)  
 Purdue University Northwest (AMI)

**Iowa (1)**

Iowa Wesleyan University (AMI)

**Kansas (6)**

Bethel College (Partner)  
 Dodge City Community College (HSI)  
 Donnelly College (HSI)  
 Fort Hays State University (AMI)  
 Newman University (AMI)  
 The University of Kansas (AMI)

**Louisiana (1)**

Southern University Law Center (Partner)

**Maryland (3)**

Montgomery College (HSI)  
 Salisbury University (Partner)  
 University of Maryland, Baltimore County (Partner)

**Massachusetts (13)**

American International College (AMI)  
 Bunker Hill Community College (HSI)  
 Emerson College (AMI)  
 Fisher College (AMI)  
 Framingham State University (AMI)  
 Mount Holyoke College (Partner)  
 Northern Essex Community College (HSI)  
 Regis College (AMI)  
 Roxbury Community College (AMI)  
 Salem State University (AMI)  
 Springfield Technical Community College (HSI)  
 Wellesley College (AMI)  
 Worcester State University (AMI)

**Michigan (6)**

Central Michigan University (Partner)  
 Hope College (Partner)  
 Ferris State University (Partner)  
 Michigan State University (AMI)  
 University of Michigan, Ann Arbor (AMI)  
 Western Michigan University (AMI)

**Missouri (5)**

Maryville University (Partner)  
 Missouri State University (Partner)  
 Saint Luke's College of Health Sciences (Partner)  
 Southeast Missouri State University (Partner)  
 Washington University in St. Louis (Partner)

**Nebraska (4)**

Central Community College (AMI)  
 Chadron State College (Partner)  
 University of Nebraska at Kearney (AMI)  
 University of Nebraska Omaha (AMI)

**Nevada (4)**

College of Southern Nevada (HSI)  
 Nevada State College (HSI)  
 Truckee Meadows Community College (HSI)  
 Western Nevada College (AMI)

**New Hampshire (1)**

Southern New Hampshire University (AMI)

**New Jersey (14)**

Bergen Community College (HSI)  
 Bloomfield College (HSI)  
 Essex County College (HSI)  
 Fairleigh Dickinson University (HSI)  
 Felician University (HSI)

Hudson County Community College (HSI)  
 Middlesex County College (HSI)  
 Montclair State University (HSI)  
 New Jersey City University (HSI)  
 Rutgers the State University of New Jersey, Camden Campus (AMI)  
 Rutgers the State University of New Jersey, Newark Campus (HSI)  
 Saint Peter's University (HSI)  
 Union County College (HSI)  
 William Paterson University (HSI)

**New Mexico (19)**

Central New Mexico Community College (HSI)  
 Clovis Community College (HSI)  
 Eastern New Mexico University – Roswell (HSI)  
 Mesalands Community College (HSI)  
 New Mexico Highlands University (HSI)  
 New Mexico Institute of Mining and Technology (HSI)  
 New Mexico Military Institute (HSI)  
 New Mexico State University (HSI)  
 New Mexico State University Alamogordo (HSI)  
 New Mexico State University Carlsbad (HSI)  
 New Mexico State University Grants (HSI)  
 Northern New Mexico College (HSI)  
 Southwestern College (AMI)  
 The University of New Mexico (HSI)  
 The University of New Mexico – Los Alamos (HSI)  
 The University of New Mexico – Valencia Campus (HSI)  
 University of New Mexico, Taos (HSI)  
 University of the Southwest (HSI)  
 Western New Mexico University (HSI)

**New York (26)**

Adelphi University (AMI)  
 Boricua College (HSI)  
 Borough of Manhattan Community College, CUNY (HSI)  
 Bronx Community College, CUNY (HSI)  
 Buffalo State College, SUNY (AMI)  
 City College of New York, CUNY (HSI)  
 College of Mount Saint Vincent (HSI)  
 College of Staten Island, CUNY (HSI)  
 Cornell University (AMI)  
 Dominican College (HSI)  
 Eugenio Maria de Hostos Community College, CUNY (HSI)  
 John Jay College of Criminal Justice, CUNY (HSI)  
 Kingsborough Community College, CUNY (AMI)  
 Lehman College, CUNY (HSI)

## HACU National Institutions

Manhattan College (AMI)  
 Medgar Evers College, CUNY (AMI)  
 Mercy College (HSI)  
 Queens College, CUNY (HSI)  
 Relay Graduate School of Education (AMI)  
 State University of New York College at Oswego (AMI)  
 Stella and Charles Guttman Community College, CUNY (HSI)  
 The City University of New York (HSI System/District)  
 The Graduate Center, CUNY (AMI)  
 University at Albany, SUNY (AMI)  
 Vaughn College of Aeronautics and Technology (HSI)  
 York College, CUNY (AMI)

### North Carolina (5)

Duke University (Partner)  
 Elon University (Partner)  
 Johnson & Wales University-Charlotte (Partner)  
 The University of North Carolina at Charlotte (AMI)  
 The University of North Carolina at Greensboro (AMI)

### Ohio (4)

Case Western Reserve University (Partner)  
 Franciscan University of Steubenville (AMI)  
 Hiram College (Partner)  
 Wright State University (Partner)

### Oklahoma (2)

Oklahoma Panhandle State University (HSI)  
 University of Central Oklahoma (AMI)

### Oregon (6)

Chemeketa Community College (HSI)  
 Columbia Gorge Community College (HSI)  
 George Fox University (AMI)  
 Oregon State University (AMI)  
 Warner Pacific University (HSI)  
 Western Oregon University (AMI)

### Pennsylvania (9)

Cabrini University (AMI)  
 Delaware Valley University (Partner)  
 Esperanza College of Eastern University (HSI)  
 Gettysburg College (Partner)

Lake Erie College of Osteopathic Medicine (LECOM) (Partner)  
 The Philadelphia College of Osteopathic Medicine (Partner)  
 The University of Scranton (AMI)  
 University of Pennsylvania (AMI)  
 York College of Pennsylvania (Partner)

### Puerto Rico (23)

American University of Puerto Rico, Bayamón (HSI)  
 Atenas College (HSI)  
 Atlantic University College (HSI)  
 Colegio Universitario de San Juan (HSI)  
 EDP University of Puerto Rico – Hato Rey (HSI)  
 EDP University of Puerto Rico – San Sebastian (HSI)  
 Inter American University of Puerto Rico, Arecibo (HSI)  
 Inter American University of Puerto Rico, Metro Campus (HSI)  
 Inter American University of Puerto Rico, San Germán (HSI)  
 Inter American University of Puerto Rico, System Central Office (HSI System/District)  
 Polytechnic University of Puerto Rico (HSI)  
 Pontificia Universidad Católica de Puerto Rico (HSI)  
 Sistema Universitario Ana G. Méndez (HSI System/District)  
 Universidad Ana G. Méndez, Recinto de Carolina (HSI)  
 Universidad Ana G. Méndez, Recinto de Cupey (HSI)  
 Universidad Ana G. Méndez, Recinto de Gurabo (HSI)  
 Universidad Ana G. Méndez, Recinto Online (HSI)  
 Universidad Carlos Albizu (HSI)  
 Universidad Central de Bayamón (HSI)  
 Universidad Central del Caribe (HSI)  
 Universidad del Sagrado Corazón (HSI)  
 University of Puerto Rico, Mayagüez (HSI)  
 University of Puerto Rico, Río Piedras (HSI)

### Rhode Island (1)

Rhode Island College (AMI)

### Tennessee (1)

Southern Adventist University (HSI)

### Texas (66)

Alamo Colleges District (HSI System/District)  
 Austin Community College District (HSI)  
 Baylor University (AMI)  
 Coastal Bend College (HSI)  
 College of the Mainland (HSI)  
 Concordia University Texas (HSI)  
 Dallas County Community College District (HSI System/District)  
 El Centro College (HSI)  
 El Paso Community College (HSI)  
 Galveston College (HSI)  
 Hallmark University (HSI)  
 Houston Baptist University (HSI)  
 Houston Community College System (HSI System/District)  
 Jarvis Christian College (AMI)  
 Lamar University (AMI)  
 Laredo Community College (HSI)  
 Lone Star College System (HSI System/District)  
 Midland College (HSI)  
 Midwestern State University (AMI)  
 Mountain View College (HSI)  
 Northeast Lakeview College (HSI)  
 Northwest Vista College (HSI)  
 Our Lady of the Lake University (HSI)  
 Palo Alto College (HSI)  
 Paul Quinn College (AMI)  
 Rice University (AMI)  
 Richland College (HSI)  
 Sam Houston State University (AMI)  
 San Antonio College (HSI)  
 San Jacinto College (HSI)  
 Schreiner University (HSI)  
 South Texas College (HSI)  
 Southwest Texas Junior College (HSI)  
 Southwestern Adventist University (HSI)  
 St. Edward's University (HSI)  
 St. Mary's University (HSI)  
 St. Philip's College (HSI)  
 Sul Ross State University (HSI)  
 Tarleton State University (AMI)  
 Tarrant County College District (AMI System/District)  
 Texas A&M International University (HSI)  
 Texas A&M University (AMI)  
 Texas A&M University-Corpus Christi (HSI)  
 Texas A&M University-Kingsville (HSI)  
 Texas A&M University-San Antonio (HSI)  
 Texas Lutheran University (HSI)  
 Texas State University (HSI)  
 Texas Tech University (HSI)  
 Texas Woman's University (HSI)  
 The University of Texas at Arlington (HSI)  
 The University of Texas at Austin (AMI)

The University of Texas at El Paso (HSI)  
 The University of Texas at San Antonio (HSI)  
 The University of Texas Health Science Center at San Antonio (HSI)  
 The University of Texas of the Permian Basin (HSI)  
 The University of Texas Rio Grande Valley (HSI)  
 Trinity University (HSI)  
 University of Houston System (HSI System/District)  
 University of Houston (HSI)  
 University of Houston-Clear Lake (HSI)  
 University of Houston-Downtown (HSI)  
 University of Houston-Victoria (HSI)  
 University of North Texas at Dallas (HSI)  
 University of the Incarnate Word (HSI)  
 West Texas A&M University (HSI)  
 Western Texas College (HSI)

**Utah (1)**

Weber State University (AMI)

**Vermont (1)**

School for International Training (SIT) (Partner)

**Virginia (2)**

Virginia Commonwealth University (AMI)  
 Washington and Lee University (Partner)

**Washington (5)**

Columbia Basin College (HSI)  
 Heritage University (HSI)  
 Pacific Lutheran University (AMI)  
 Washington State University (AMI)  
 Whitman College (Partner)

**Wisconsin (6)**

Alverno College (HSI)  
 Marquette University (AMI)  
 Milwaukee Area Technical College (AMI)  
 University of Wisconsin-Green Bay (Partner)  
 University of Wisconsin-Parkside (AMI)  
 Viterbo University (Partner)

## HACU International Institutions

### As of December 31, 2019

An institution of higher education abroad that documents that it is a legally constituted entity authorized to operate in its country according to the rules and regulations required by its government.

### 34 HACU International Institutions in 10 countries in Latin America and Europe

**Barbados (1)**

Ross University School of Medicine

**Chile (1)**

Universidad Mayor

**Colombia (1)**

UNIMETA

**Costa Rica (2)**

Universidad de Iberoamérica Universidad Santa Paula

**Ecuador (1)**

Universidad Técnica Particular de Loja,  
 San Cayetano Alto

**El Salvador (3)**

Escuela Especializada en Ingeniería ITCA-FEPADE  
 Universidad Católica de El Salvador  
 Universidad Tecnológica de El Salvador

**Guatemala (2)**

AUPRICA (Asociación de Universidades Privadas  
 de Centroamérica)  
 EADE Business School

**Mexico (7)**

Centro de Estudios Universitarios  
 CETYS Universidad  
 Instituto de Ciencias y Estudios Superiores de Tamaulipas  
 Universidad Autónoma de Guadalajara  
 Universidad Autónoma de Nuevo León  
 Universidad de Guadalajara  
 Universidad Tecnológica del Suroeste de Guanajuato

**Nicaragua (1)**

Universidad Nacional de Ingeniería (UNI)

**Spain (15)**

Embassy of Spain-Trade Commission Miami (Based in the US)  
 European College - EC Business School, SA  
 Gresol International American School  
 Infinite Spur  
 Instituto de Educación Superior Intercontinental de la Empresa (IESIDE)  
 Universidad de Alcalá  
 Universidad de Burgos  
 Universidad de Las Palmas de Gran Canaria  
 Universidad de León  
 Universidad de Málaga  
 Universidad de Salamanca  
 Universidad de Valladolid  
 Universidad Europea Miguel de Cervantes  
 Universidad Rey Juan Carlos  
 Universitat Politècnica de Valencia

## HACU Hispanic-Serving School District (HSSD)

As of December 31, 2019

Any public or private K-12 school district where Hispanic students constitute a minimum of 25 percent of the total enrollment.

### 23 HACU HSSD Affiliates in 10 States

#### Arizona (1)

Tucson Unified School District

#### California (9)

Colton Joint Unified School District  
 Ezequiel Tafoya Alvarado Academy  
 Gonzales Unified School District  
 Moreno Valley Unified School District  
 San Bernardino City Unified School District  
 San Bernardino County Superintendent of Schools San Jacinto Unified School District  
 San Juan Unified School District  
 Victor Elementary School District

#### Colorado (1)

Chavez Huerta K-12 Preparatory Academy

#### Illinois (1)

Joliet Public Schools District 86

#### Indiana (1)

River Forest Community School Corporation

#### Nevada (1)

Clark County School District

#### New Jersey (4)

Asbury Park School District  
 Elizabeth Public Schools  
 Passaic County Technical Institute  
 Passaic Public Schools

#### New York (2)

South Huntington Union Free School District  
 Yonkers Public Schools

#### Pennsylvania (2)

Community Academy of Philadelphia Charter School  
 The ASPIRA Schools of Pennsylvania

#### Texas (1)

Fort Bend Independent School District

## HACU Faculty and Staff Affiliates

As of December 31, 2019

Faculty and Staff Affiliates at HACU-member institutions have their institution's name listed in bold.

Faculty and Staff Affiliates at non-member and nonprofit institutions have their institution's name listed in regular print.

### 42 HACU Faculty and Staff Affiliates in 16 States

#### Arizona (1)

##### **Pima Community College**

Ms. Michelle A. Martinez  
 Program Developer

#### California (12)

##### **Cabrillo College**

Dr. Marina L. Ramon  
 STEM Project Specialist  
 Natural and Applied Sciences

##### **California State University System Office**

Dr. Silas H. Abrego  
 Emeritus Vice President for Student Affairs

##### **California State University, Chico**

Ms. Bertha Alicia Curiel  
 Educational Partnership Coordinator,  
 Chico Student Success Center

##### **California State University, Fullerton**

Dr. Patricia A. Pérez  
 Professor  
 Chicana & Chicano Studies

##### **City College of San Francisco**

Dr. Vinicio J. Lopez  
 Dean of Academic Affairs International Education

##### **Concordia University Irvine**

Ms. Jackie Franke  
 Field Experience Coordinator  
 School of Education

##### **Concordia University Irvine**

Ms. Amanda Harris  
 Director of Student Life & Development

##### **Concordia University Irvine**

Dr. John W. Kenney, III  
 Professor of Chemistry/Physics

##### **Concordia University Irvine**

Ms. Lizz Mishreki  
 Director of Public Relations

##### **Concordia University Irvine**

Ms. Susan Park  
 Director of Undergraduate Admissions

##### **Concordia University Irvine**

Dr. Terilyn Walker  
 Dean for Equity Diversity & Inclusion

##### Sacramento City College

Ms. Sandra Camarena  
 Professor, Economics

## HACU Faculty and Staff Affiliates

### Colorado (3)

Colorado State University-Fort Collins  
Mrs. Sylvia Martinez  
Associate Director, Client Services

Colorado State University-Fort Collins  
Ms. Mary Ontiveros  
Vice President for Diversity

Colorado State University-Fort Collins  
Dr. Guadalupe Salazar  
Director, El Centro

### Connecticut (1)

#### Goodwin College

Ms. Natalie Javier  
Grants Officer

### Florida (1)

#### Florida Gulf Coast University

Ms. Ysatis M. Piñero  
Assistant Director,  
Multicultural Development Initiatives

### Illinois (2)

#### Concordia University Chicago

Mr. Jerry Pinotti  
Director, Career Services

#### University of Illinois at Chicago

Dr. Rudy M. Molina, Jr  
Associate Vice Chancellor  
Student Affairs

### Indiana (1)

Indiana State University  
Ms. Theresa Ortega  
Co-Advisor - Hispanic Latino Alliance

### Kentucky (1)

University of Louisville  
Dr. Andrew S. Manikas  
Associate Professor, Management

### Michigan (1)

#### Western Michigan University

Ms. Diana Hernandez  
Director, Division of Multicultural Affairs

### Missouri (3)

#### Missouri State University

Mr. Juan Meraz  
Assistant Vice President  
Diversity and Inclusion

#### Missouri State University

Dr. H. Wes Pratt  
Assistant to the President/Chief  
Diversity Officer

St. Charles Community College  
Ms. Martha Garcia Kampen  
Chief Diversity & Compliance Officer

### New Jersey (2)

#### New Jersey City University

Ms. Jodi Bailey  
Associate Vice President for Student  
Affairs

#### New Jersey City University

Dr. David L. Blackmore, Jr.  
Co-Director, Center for Latin American,  
Caribbean, and Latinx Studies

### New Mexico (3)

#### New Mexico Institute of Mining and Technology

Mr. Carlos Rey Romero  
Associate Vice President for Research

#### New Mexico State University

Dr. Efren Delgado  
Assistant Professor  
Family and Consumer Sciences

#### New Mexico State University

Dr. Anthony S. Marin  
Assistant Vice-President, Student  
Affairs

### New York (2)

Broome Community College, SUNY  
Dr. Carol Ross-Scott  
VP Student Development and Chief  
Diversity Officer

Clarkson University  
Dr. Jennifer Ball  
Chief Inclusion Officer

### South Carolina (1)

Benedict College  
Dr. Emmanuel Lalande  
Vice President, Enrollment Management

### Texas (7)

Austin Presbyterian Theological Seminary  
Dr. David Jensen  
Academic Dean

#### Lone Star College System

Ms. Shannon Hausinger  
Director, Learning Resource Center

#### St. Edward's University

Dr. Gloria A. White  
Director of Sponsored Programs

#### Texas A&M University-Corpus Christi

Dr. Xavier Fonz Gonzales  
Professional Assistant Professor  
Life Sciences

#### Texas State University

Dr. Lisa Garza  
Director, University Planning and  
Assessment

#### University of the Incarnate Word

Dr. Sonia L. Jasso  
Sr. Director, Advising Services

#### University of the Incarnate Word

Mr. Armando Saliba  
Associate Director, Foundation, Corporate  
& Government Relations

### Wisconsin (1)

Northeast Wisconsin Technical College  
Dr. Colleen Simpson  
Vice President of Student Services

## HACU Educational Affiliates

**As of December 31, 2019**

Nonprofit organizations, associations or councils that are deemed by the Internal Revenue Service as nonprofit status and are not institutions of higher education or school district.

**6 HACU Educational Affiliates in 6 States**

### California (1)

Higher Education Recruitment Consortium-HERC

### Illinois (1)

IES Abroad

### Massachusetts (1)

JSI Research & Training Institute, Inc. (JSI)

### New Jersey (1)

Educational Testing Service

### New York (1)

Institute of International Education (IIE)

### Texas (1)

Community Colleges for International Development

## HACU Trustee Affiliates

**As of December 31, 2019**

Trustee Affiliates at HACU-member institutions have their institution's name listed in bold.

Trustee Affiliates at non-member and nonprofit institutions have their institution's name listed in regular print.

**6 HACU Trustee Affiliates in 3 States**

### California (4)

#### **Palomar College**

Mr. Mark Evilsizer  
Governing Board Trustee

#### **Palomar College**

Dr. John J. Halcón  
Governing Board Trustee

#### **San Diego Community College District**

Dr. Maria Nieto Senour  
Board Member

#### **Southwestern College**

Ms. Nora E. Vargas  
Board Member

### New York (1)

Nassau Community College, SUNY  
Dr. Jorge L. Gardyn  
Chairman of the Board

### Washington (1)

#### **Heritage University**

Ms. Paula Linnen  
Board Member

## HACU Student Affiliates

**As of December 31, 2019**

Students Affiliates currently enrolled at HACU member institutions have their institution's name listed in bold.

Student Affiliates at non-member and nonprofit institutions have their institution's name listed in regular print.

**31 HACU Student Affiliates in 10 States, Puerto Rico and the District of Columbia**

### California (4)

#### **California State University, Los Angeles**

Stephanie Perez  
Interdisciplinary Studies  
Graduate Level

#### **Cuesta College**

William Bush  
Business  
Undergraduate Level

#### **University of California, Riverside**

Joanne Chiu  
Business  
Undergraduate Level

#### **University of Southern California**

Soraira Urquiza  
Education (EdD)  
Graduate Level

### Colorado (1)

#### **University of Colorado Denver | Anschutz Medical Campus**

Cynthia R. Jimenez  
Masters of Public Health  
Graduate Level

### District of Columbia (3)

George Washington University  
Juliana Desouza Funkhouser  
Law  
Graduate Level

George Washington University  
Amy Jayas  
MPH, Epidemiology  
Graduate Level

#### **The Catholic University of America**

Patricia A. Galan-Cisneros  
Social Work  
Graduate Level

## HACU Student Affiliates

### Florida (4)

#### Lynn University

Jessika M. De Jesus Canales  
Aviation Management  
Undergraduate Level

#### Miami Dade College

Camila Dominguez  
Aerospace Engineering  
Undergraduate Level

#### Miami Dade College

Reinaldo Figueroa  
Computer Engineering  
Undergraduate Level

#### Miami Dade College

Roberto Ruiz  
Mechanical Engineering  
Undergraduate Level

### Illinois (1)

#### Aurora University

Maria Sinkule  
Doctorate in Social Work  
Graduate Level

### Michigan (1)

#### Central Michigan University

Rebeca Reyes Barrios  
Educational Leadership  
Graduate Level

### New Mexico (2)

#### New Mexico State University

Edgardo Castro  
Educational Leadership  
Graduate Level

#### New Mexico State University

Stephanie Hernandez  
Educational Leadership Admin  
Graduate Level

### New York (6)

Binghamton University, SUNY  
Luis Lucas Beltramino Economics  
Undergraduate Level

#### College of Staten Island, CUNY

Douglas Encarnacion  
Business Management  
Graduate Level

CUNY School Of Labor And Urban  
Studies

Eriam Lopez  
Labor Studies  
Graduate Level

#### Lehman College, CUNY

Jonelle Knox  
English  
Graduate Level

Northcentral University

Bielka Gutierrez  
Marriage and Family Therapy  
Graduate Level

Syracuse University  
Marlene Cabrera  
Economics/Computer Science  
Undergraduate Level

### North Carolina (1)

Wake Forest University  
Andrew M. Ebratt  
Political Science/Latin America Studies  
Undergraduate Level

### Puerto Rico (2)

#### Polytechnic University of Puerto Rico

Dioscamaris Mendez Ruiz  
Mechanical Engineering  
Undergraduate Level

#### University of Puerto Rico, Mayagüez

Xavier Alfredo Garcia Lopez, Sr.  
Geology  
Graduate Level

### Texas (5)

#### Texas A&M University

Carla Sada  
Business  
Undergraduate Level

#### Texas A&M University

Rebeca Olivia Sada  
Bioenvironmental Sciences  
Undergraduate Level

#### Texas State University

Jennifer Garcia  
Construction Science Management  
Undergraduate Level

#### University of Houston-Downtown

Arlene Paz  
Criminal Justice  
Undergraduate Level

#### University of Houston-Downtown

Ana Maria Robledo  
Business Insurance & Risk  
Management  
Undergraduate Level

### Virginia (1)

Virginia Military Institute  
Brian Carrera  
Civil Engineering  
Undergraduate Level

**NATIONAL HEADQUARTERS**

8415 Datapoint Dr., Suite 400  
San Antonio, Texas 78229  
tel: (210) 692-3805  
fax: (210) 692-0823  
email: [hacu@hacu.net](mailto:hacu@hacu.net)  
Facebook: HACUNews  
Twitter: @HACUNews

**WASHINGTON, D.C. OFFICE**

One Dupont Circle N.W., Suite 430  
Washington, D.C. 20036  
tel: (202) 833-8361  
fax: (202) 261-5082  
email: [dcgr@hacu.net](mailto:dcgr@hacu.net)  
Twitter: @HACUDC

**WESTERN REGIONAL OFFICE**

1107 9th Street, Suite 830  
Sacramento, CA 95814  
tel: (916) 442-0392  
fax: (916) 446-4028  
email: [wro@hacu.net](mailto:wro@hacu.net)  
Twitter: @HACUWRO

Stay Connected with @HACUNews



**hacu.net**

**The Champions of Hispanic Success in Higher Education**