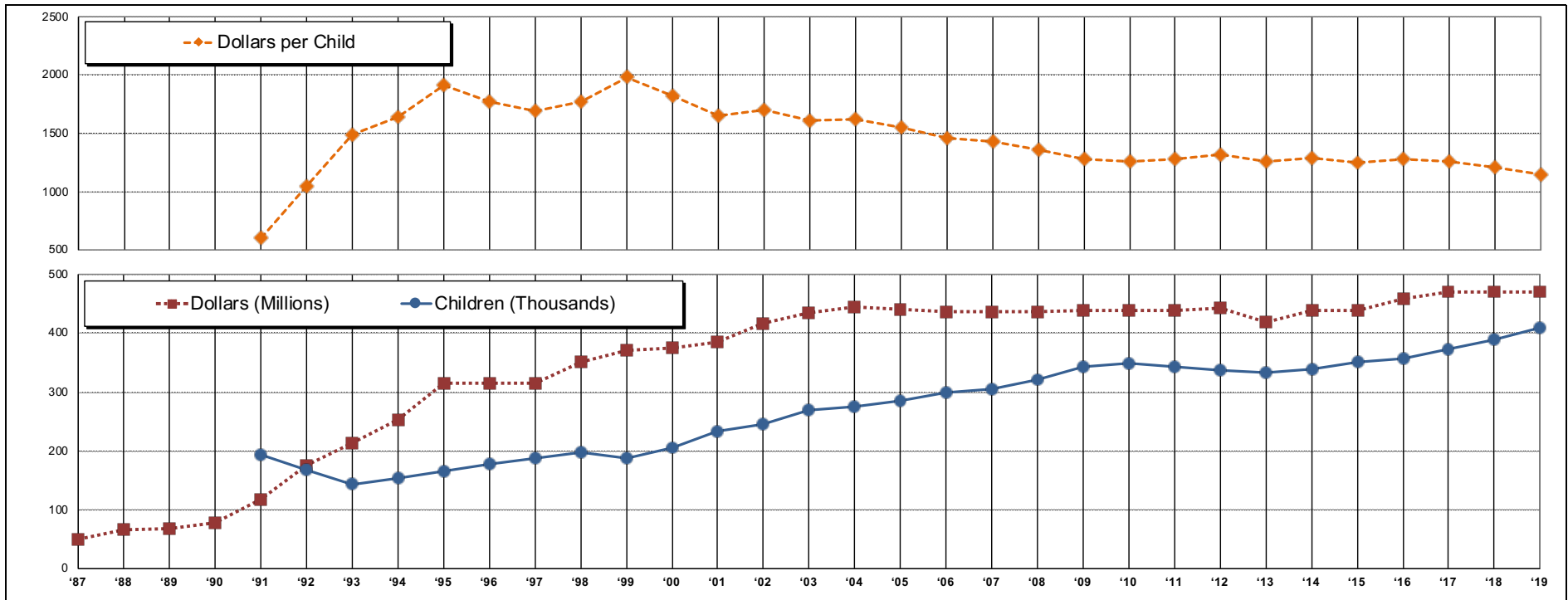


# Part C Infant and Toddler Program

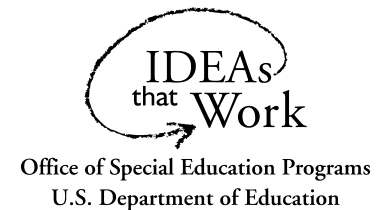
Federal Appropriations and National Child Count 1987-2019

updated July 16, 2020

FFY:	'87	'88	'89	'90	'91	'92	'93	'94	'95	'96	'97	'98	'99	'00	'01	'02	'03	'04	'05	'06	'07	'08	'09	'10	'11	'12	'13	'14	'15	'16	'17	'18	'19
<b>Dollars (Millions)</b>	50	67	69	79	117	175	213	253	316	316	316	350	370	375	384	417	434	444	441	436	436	439	439	443	420	438	439	459	470	470	470		
<b>Children (Thousands)</b>					194	167	143	154	165	178	187	197	187	206	233	246	269	275	285	299	305	322	343	349	343	337	334	339	351	358	373	389	409
<b>Dollars per Child</b>					603	1048	1490	1643	1915	1775	1690	1777	1979	1820	1648	1697	1615	1616	1550	1458	1428	1354	1280	1259	1279	1314	1257	1293	1251	1282	1260	1209	1148



Key	
<b>Dollars (Millions) appropriated for distribution to states:</b>	Source: <a href="http://www2.ed.gov/about/overview/budget/tables.html">http://www2.ed.gov/about/overview/budget/tables.html</a> (Downloaded July 16, 2020)
<b>Children (Thousands) with Individualized Family Service Plans (IFSPs) in the Fall of each federal fiscal year, U.S. &amp; Outlying Areas:</b>	Source: <a href="https://www2.ed.gov/programs/osepidea/618-data/static-tables/index.html">https://www2.ed.gov/programs/osepidea/618-data/static-tables/index.html</a> (Downloaded July 16, 2020) Note: A single-day child count is used, which may underrepresent the actual number of children served that year.
<b>Dollars per Child:</b>	allocation of Part C dollars
<b>FFY (Federal Fiscal Year):</b>	For example, in FFY 1991, 194,000 children were reported to be receiving services as of December 1, 1990.



Compiled by Lazara, A. Chapel Hill: The University of North Carolina, FPG Child Development Institute, Early Childhood Technical Assistance Center. Retrieved from <http://ectacenter.org/partc/partcdata.asp#appropriations>

The ECTA Center is a program of the FPG Child Development Institute of the University of North Carolina at Chapel Hill, funded through cooperative agreement number H326P170001 from the Office of Special Education Programs, U.S. Department of Education. Opinions expressed herein do not necessarily represent the Department of Education's position or policy.