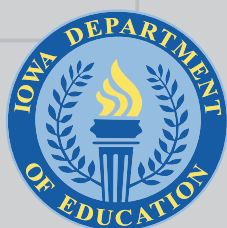


Adult Education and Literacy ANNUAL REPORT

2019

Fiscal Year

July 1, 2018 to June 30, 2019



**COMMUNITY COLLEGES &
WORKFORCE PREPARATION**
PROSPERITY THROUGH EDUCATION
www.educateiowa.gov/ccpublications

**IOWA DEPARTMENT
OF EDUCATION**



Grimes State Office Building

Phone: 515-281-8260
Fax: 515-242-5988
www.educateiowa.gov

Ryan Wise
Director, Iowa Department
of Education
515-281-3436
ryan.wise@iowa.gov

Jeremy Varner
Administrator, Division of
Community Colleges and
Workforce Preparation
515-281-8260
jeremy.varner@iowa.gov

Barbara Burrows
Chief, Bureau of
Community Colleges
515-281-0319
barbara.burrows@iowa.gov

Alex Harris
State Director of
Adult Education and Literacy
515-281-3640
alex.harris@iowa.gov

Published:
2019

**State of Iowa
Department of Education**
Grimes State Office Building
400 E. 14th Street
Des Moines, IA 50319-0146

State Board of Education

Brooke Axiotis, Des Moines
Michael Bearden, Gladbrook
Bettie Bolar, Marshalltown
Joshua Byrnes, Osage
Angela English, Dyersville
Michael L. Knedler, Council Bluffs
Mike May, Spirit Lake
Mary Ellen Miller, Wayne County
Kimberly Wayne, Des Moines
Fez Zafar, Student Member, Clive

Administration

Ryan M. Wise, Director and Executive Officer
of the State Board of Education

**Division of Community Colleges
and Workforce Preparation**

Jeremy Varner, Division Administrator

Bureau of Community Colleges

Barbara Burrows, Bureau Chief
Alex Harris, State Director of Adult
Education and Literacy

It is the policy of the Iowa Department of Education not to discriminate on the basis of race, creed, color, sexual orientation, gender identity, national origin, sex, disability, religion, age, political party affiliation, or actual or potential parental, family or marital status in its programs, activities, or employment practices as required by the Iowa Code sections 216.9 and 256.10(2), Titles VI and VII of the Civil Rights Act of 1964 (42 U.S.C. § 2000d and 2000e), the Equal Pay Act of 1973 (29 U.S.C. § 206, et seq.), Title IX (Educational Amendments, 20 U.S.C. §§ 1681 – 1688), Section 504 (Rehabilitation Act of 1973, 29 U.S.C. § 794), and the Americans with Disabilities Act (42 U.S.C. § 12101, et seq.). If you have questions or complaints related to compliance with this policy by the Iowa Department of Education, please contact the legal counsel for the Iowa Department of Education, Grimes State Office Building, 400 E. 14th Street, Des Moines, IA 50319-0146, telephone number: 515-281-5295, or the Director of the Office for Civil Rights, U.S. Department of Education, Citigroup Center, 500 W. Madison Street, Suite 1475, Chicago, IL 60661-4544, telephone number: 312-730-1560, FAX number: 312-730-1576, TDD number: 877-521-2172, email: OCR.Chicago@ed.gov.

About the Report

The Department of Education, Division of Community Colleges and Workforce Preparation, is preparing this report in response to the Skilled Iowa and Job Creation Fund for the state appropriation for Adult Basic Education and Adult Education Literacy (AEL) Programs (260C.50). The Department coordinated this report with the assistance of Iowa's fifteen community colleges.

Acknowledgments

The staff and administration of the Division of Community Colleges wish to acknowledge and thank the fifteen community college presidents and their staff for their assistance in developing this report. The figures noted in this report were obtained from each of Iowa's fifteen community colleges.

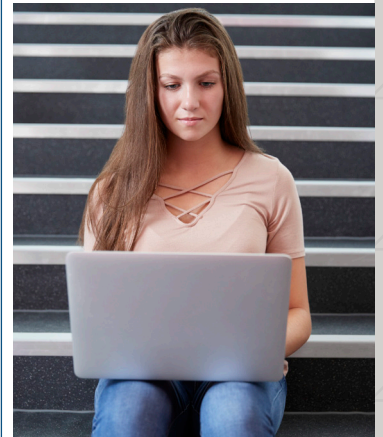
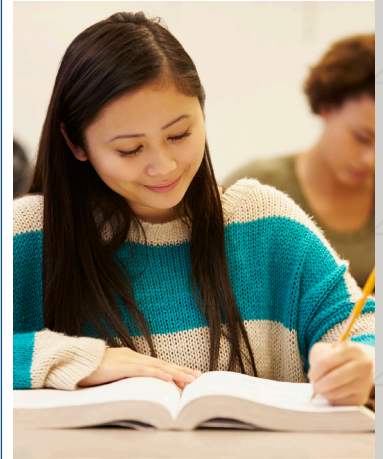




Table of Contents

About the Report	iii
Acknowledgments	iii
Introduction.....	2
Eligible Costs	3
Program Components.....	3
Process	3
Methods in Reporting	4
Analysis	4
Appendix: Tables and Figures.....	6
<i>Table 1: AEL Program Summary by College: FY19</i>	6
<i>Table 2A: AEL Program Summary by College: FY19</i>	7
<i>Table 2B: AEL Program Summary by College: FY18.....</i>	7
<i>Table 3A: AEL Program Expenditures by College, State AEL: FY19</i>	8
<i>Table 3B: AEL Program Expenditures by College, State ESL: FY19.....</i>	8
<i>Table 3C: AEL Program Expenditures by College, State AEL: FY18.....</i>	9
<i>Table 3D: AEL Program Expenditures by College, State ESL: FY18.....</i>	9
<i>Figure 1A: AEL Program Expenditures by Quarter, State AEL: FY19.....</i>	10
<i>Figure 1B: AEL Program Expenditures by Quarter, State ESL: FY19.....</i>	10
<i>Table 4A: AEL Program Expenditures by College, Federal AEL: FY19.....</i>	11
<i>Table 4B: AEL Program Expenditures by College, Federal AEL: FY18.....</i>	11
<i>Figure 2: AEL Program Expenditures by Quarter, Federal AEL/IELCE: FY19 ...</i>	12
<i>Table 5A: AEL Educational Functioning Level gains(EFL)¹ by College: FY19.</i>	13
<i>Table 5B: AEL Educational Functioning Level Gains (EFL)¹ by College: FY18</i>	13
<i>Figure 3A: AEL Participant Comparison: FY19 and FY18</i>	14
<i>Figure 3B: AEL Post-Test Rate Comparison: FY18 and FY19.....</i>	14
<i>Table 6A: AEL Performance¹ Summary of Completers by Level: FY19</i>	15
<i>Table 6B: AEL Performance¹ Summary of Completers by Level: FY18.....</i>	15
<i>Figure 4: AEL Performance Summary by Level: FY18 and FY19.....</i>	16

Introduction

Adult education has a rich history in Iowa of providing services that assist adults in improving their skills, achieving their educational goals, and transitioning to further education or employment. Instruction is designed for adults functioning at the lowest levels of basic skills and English language instruction to advanced levels of learning. As defined by Title II of the Workforce Innovation and Opportunity Act (WIOA), Adult Education enables adults to (1) become literate and obtain the knowledge and skills necessary for employment and self-sufficiency; (2) obtain the educational skills necessary to become full partners in the educational development of their children; and (3) complete a secondary school education.

Adult education offers solutions. Adult education's history of responding to learners' needs is one way to address the skill gap and economic demands of Iowa's workforce regions. Whether a learner's goals are related to personal improvement, family literacy, further training, or employment, undereducated adults in Iowa need a system that provides clear pathways and support.



ADDRESSING IOWA'S NEEDS AND CHALLENGES THROUGH ADULT EDUCATION

In FY19, Iowa's adult education and literacy (AEL) programs served 11,039 unique participants helping them improve their skills, achieve educational goals, and transition to further education or employment.



ADULTS WITHOUT HIGH SCHOOL DIPLOMAS

According to the U.S. Census Bureau's 2017 American Community Survey, 8.3 percent of Iowa's population, age 25 years and over (169,966 people) neither graduated from high school nor earned a high school equivalency diploma. In FY19 a total of 1,756 participants completed all five sub-tests and were awarded equivalency diplomas



THE LIMITED ENGLISH PROFICIENT (LEP) POPULATION

Iowa's LEP population, 5-years-of-age and over, totaled 218,229. The American Community Survey's 5-year (2012-2017) estimates indicate of that population, 93,111 self identified as "speaks English less than very well". In FY19, Iowa's AEL providers served 41.1 percent (4,532) of participants in English as a Second Language programs

Eligible Costs

Funds received from state funding sources for adult education and literacy programs shall adhere to the allowable use restrictions of the Adult Education and Family Literacy Act (AEFLA) and subsequent adult education legislation, except for administrative cost restrictions. Exceptions include the allowable use of funds for high school equivalency testing, administration, and associated costs. Only activities directly linked to adult education and literacy (AEL) programs and instruction shall be funded with monies received from state AEL funds. Since the intent of the state funds were to expand services and improve the quality of AEL programs, the state and federal funds were supplemented to deliver services to all eligible participants. Consideration should be given to providing AEL activities concurrently with workforce preparation activities and workforce training for educational and career advancement.

Program Components

Eligible institutions maintain the ability to provide the following AEL services as deemed appropriate by the community or needs of the students:

1. Adult basic education.
2. Programs for adults of limited English proficiency.
3. Adult secondary education, including programs leading to the achievement of a high school equivalency certificate or high school diploma.
4. Instructional services provided by qualified instructors to improve student proficiencies necessary to function effectively in adult life, including accessing further education, employment-related training, or employment.
5. Assessment and guidance services adhering to the state's assessment policy.
6. Programs and services stipulated by current and subsequent adult education legislation.
 - a. Institutions shall effectively use technology, services, and delivery systems, including distance education, in a manner sufficient to increase the amount and quality of student learning and performance.

Process

AEL state funds are distributed based upon the state general aid (SGA) formula. However, state funds designated for English as a Second Language (ESL) are jointly distributed by the department and the community colleges based on the need for instruction in the region as determined by census survey and local outreach efforts.

Federal AEL funds are distributed by performance (15 percent) and need (85 percent) to eligible providers that have been awarded a grant. These funds have included a carve-out for English Language and Civics Education, but under WIOA, a separate grant awards Integrated English

Literacy and Civics Education (Sec. 243) funds, which has averaged \$297,176, in the last two years. Each federally-funded program also submits an annual local plan, detailing the services and strategies for the upcoming year. Each plan highlights the local area needs, past effectiveness, and currently planned activities that demonstrate continuous improvement. Added emphasis has been placed on the criteria of sufficient intensity and duration with collaborative approaches for providing support services to participants.

Methods in Reporting

For this report, a fiscal year is the 12 months from July 1 to June 30. For an eligible individual to enroll in adult education and literacy (AEL) services, a pre-test is administered that measures basic skill levels. As long as the individual scores under a twelfth grade level in math or reading, or lacks a high school credential, they are eligible for services and counted as an eligible individual for reporting. Total courses include eligible individuals and participants who are enrolled in the community college Management Information System (MIS) and can include more than one adult education and literacy course, such as English as a Second Language (ESL) and basic skill development throughout the year. To be counted as an AEL participant, eligible individuals must attend instruction for 12 or more hours in order to be eligible for federal reporting.

Finally, those participants who achieve a skill gain are those that persist with hours of instruction, post-test and make an educational level gain in either math or reading—depending on their instructional goal or focus. Skill gains are equivalent to grade or multiple grade level completion.

Analysis

This report includes and compares AEL financial allocations, expenditures, and performance for the fiscal years 2018 and 2019 (Tables 1 through 6B). The financial allocations for the fiscal year 2019 include state-appropriated funds for adult education and literacy as well as for ESL programs. Programs receive an annual state allocation of \$5,140,000 to expand their services to eligible individuals. In FY19, Iowa also allocated \$3,258,007 in federal funds by formula to local programs.

In addition to FY19 allocations, programs carried forward \$952,966 from both state and federal funds from FY18. Many programs have used these funds to expand access to services within their region and improve partnerships with workforce delivery services as part of WIOA.

Of the \$9,350,973 available in FY19 from state and federal funds, 71.3 percent (\$6,670,592) was spent on direct instruction. Total administrative expenditures by fifteen programs, equaled 9.0 percent (\$841,390) of the available funds. A total of 85.9 percent of the available funds were spent in FY19 (See Table 1 for detail).

In FY19, Iowa's AEL programs served 11,039 unique participants (i.e., students remained in the program longer than 12 hours), which represents a 1.8 percent decrease from FY18. In FY17, period of participation (POP) was introduced by the National Reporting System (NRS) for the purpose of reporting measurable skill gains with participants that exit services and then re-enter within the program year. According to NRS, "a period of participation begins each time an individual enters adult education and gets at least 12 hours of service," and a period of participation ends when there is "no service or scheduled service for 90 days"¹. Therefore, each participant can have multiple periods of participation in the same year. Of the 11,039 unique participants in FY19 served, there were 11,265 periods of participation.

To measure educational gains, AEL programs pre- and post-test participants after a minimum number of instructional hours. Without a post-test, measuring gains would be impossible. Of the 11,039 participants in FY19, 54 percent were given a post-test. Of those post-tested, 44 percent made an educational functioning level gain. Gains also include the awarding of Iowa's High School Equivalency Diploma (HSED) for eligible students passing the state identified assessment, the HiSET®, as a measurement of high school equivalency. In FY19, there were 1,756 HSED completers. For the 11,265 periods of participation, there were 4,939 measurable skill gains (i.e., students either made educational functioning level gain or received High School Equivalency Diploma).

Core measure reporting for AEL, which typically includes entering and retaining employment and entering postsecondary or transition training, was not available at the time of this report due to lags in reporting wage information and data from the National Student Clearinghouse. This data will be reported in a federal report and captured in the annual publication, *Condition of Iowa's Community Colleges 2019*.

¹Defining Key Elements of NRS Report. Retrieved from <http://www.nrsweb.org/trainings/events/DefiningKeyElements.aspx>

Appendix: Tables and Figures

TABLE 1: AEL PROGRAM SUMMARY BY COLLEGE: FY19

State Fiscal Year Budget

Carry Forward from Prior FY ¹	\$508,956
Current Year State Allocation	\$5,140,001

Total Available State Funds (AEL and ESL) \$5,648,956

Expenses per Quarter

State AEL Line Item	Q1	Q2	Q3	Q4	YTD Expend
Administrative Expenses	\$148,747	\$144,473	\$129,325	\$164,421	\$586,966
Instructional Expenses	\$607,259	\$711,751	\$780,330	\$898,384	\$2,997,724
Professional Development Expenses	\$20,679	\$13,105	\$22,306	\$12,498	\$68,588
HSED Expenses	\$76,623	\$61,778	\$74,868	\$115,594	\$328,863
Total	\$853,307	\$931,108	\$1,006,828	\$1,190,897	\$3,982,140

Carry Forward to New FY: \$361,961

Expenses per Quarter

State ESL Line Item	Q1	Q2	Q3	Q4	YTD Expend
Administrative Expenses	\$18,675	\$762	\$7,810	\$9,372	\$36,618
Instructional Expenses					
Instructional	\$269,974	\$397,135	\$248,443	\$254,818	\$1,170,369
ESL online Platform	\$12,569	\$12,569	\$12,569	\$12,569	\$50,277
Professional Development Expenses	\$775	\$3,759	\$269	\$1,710	\$6,512
Total	\$303,944	\$411,021	\$268,822	\$276,786	\$1,260,573

Carry Forward to New FY: \$44,278

Federal Fiscal Year Budget

Carry Forward from Prior FY	\$444,010
Current Year State Allocation	\$3,258,007

Total Available Federal Funds (AEL and IELCE) \$3,702,017

Expenses per Quarter

Federal AEL/IELCE Line Item	Q1	Q2	Q3	Q4	YTD Expend
Administrative Expenses	\$70,136.84	\$52,332.25	\$42,608.09	\$52,729.08	\$217,806.26
AEL Instruct Expenses	\$490,547.25	\$700,734.41	\$569,701.91	\$540,358.01	\$2,301,341.58
IELCE Instruct Expenses	\$27,042.96	\$37,723.35	\$25,328.49	\$60,785.02	\$150,879.82
Professional Development Expenses	\$44,980.96	\$10,319.87	\$12,595.10	\$49,698.23	\$117,594.16
Total	\$632,708	\$801,110	\$650,234	\$703,570	\$2,787,622

Carry Forward to New FY: \$914,394

TABLE 2A: AEL PROGRAM SUMMARY BY COLLEGE: FY19

College	Federal Allocation	State Allocation	Total Expenditures ¹	Total Courses ²	Participants ³	Total POP ⁴	Total POP with MSG ⁵	HSED Completers
Northeast Iowa	\$133,171	\$230,861	\$332,581	901	318	324	109	61
North Iowa Area	\$109,478	\$230,278	\$343,264	598	245	245	97	43
Iowa Lakes	\$92,764	\$211,239	\$307,709	813	202	208	76	11
Northwest Iowa	\$97,427	\$128,384	\$260,869	595	218	227	91	12
Iowa Central	\$210,846	\$289,259	\$499,429	2360	920	930	522	176
Iowa Valley	\$133,732	\$247,011	\$341,354	1205	393	404	201	39
Hawkeye	\$254,726	\$341,176	\$595,902	2954	891	896	472	68
Eastern Iowa	\$314,347	\$415,217	\$748,974	3685	983	990	464	254
Kirkwood	\$388,715	\$740,694	\$1,051,290	7665	1500	1538	649	189
Des Moines Area	\$719,302	\$1,031,992	\$1,520,262	7634	2735	2810	1115	530
Western Iowa Tech	\$256,130	\$333,267	\$598,967	2448	887	887	409	81
Iowa Western	\$164,464	\$284,250	\$420,523	1844	579	605	277	136
Southwestern	\$87,313	\$122,170	\$240,583	303	155	155	83	25
Indian Hills	\$148,421	\$338,435	\$485,346	1495	426	436	151	52
Southeastern	\$147,171	\$195,766	\$283,282	1989	587	610	223	79
TOTAL	\$3,258,007	\$5,140,000	\$8,030,335	36,489	11,039	11,265	4,939	1,756

TABLE 2B: AEL PROGRAM SUMMARY BY COLLEGE: FY18

College	Federal Allocation	State Allocation	Total Expenditures ¹	Total Courses ²	Participants ³	Total POP ⁴	Total POP with MSG ⁵	HSED Completers
Northeast Iowa	\$135,835	\$230,392	\$299,161	822	311	321	111	75
North Iowa Area	\$105,772	\$229,196	\$341,821	631	259	259	126	59
Iowa Lakes	\$75,659	\$211,764	\$235,697	291	142	150	57	7
Northwest Iowa	\$100,500	\$127,234	\$232,996	751	187	201	89	3
Iowa Central	\$218,568	\$289,269	\$507,737	2249	1019	1045	605	179
Iowa Valley	\$133,078	\$243,860	\$362,526	1557	478	499	304	52
Hawkeye	\$245,418	\$336,026	\$581,444	3003	783	788	437	44
Eastern Iowa	\$297,576	\$418,090	\$727,822	2381	985	1009	464	175
Kirkwood	\$367,957	\$735,829	\$1,016,603	7875	1684	1730	755	188
Des Moines Area	\$644,763	\$1,037,527	\$1,566,612	8715	2776	2880	1262	463
Western Iowa Tech	\$267,526	\$338,366	\$627,928	1941	878	879	452	77
Iowa Western	\$146,662	\$283,536	\$382,410	2161	557	579	239	123
Southwestern	\$82,453	\$121,118	\$245,936	712	174	175	97	40
Indian Hills	\$137,657	\$340,860	\$509,839	1587	414	432	172	52
Southeastern	\$147,168	\$196,934	\$409,774	2312	600	618	260	65
TOTAL	\$3,106,592	\$5,140,001	\$8,048,304	36,988	11,247	11,565	5,430	1,602

1 Includes carry over funds from previous FY.

2 Based on MIS enrollment; could be co-enrolled.

3 Students enrolled who attended 12+ hours with a pre-test.

4 Period of Participation in this FY.

5 POP with MSG (Period of Participation with Measurable Skill Gains) MSG are determined by post-testing and achieving a sufficient score to move to the next EFL or achieving a HSED award.

TABLE 3A: AEL PROGRAM EXPENDITURES BY COLLEGE, STATE AEL: FY19

College	Administrative	Professional Development	AEL Instruction	HSED Expenses	Total Expenditures	Allocation Remaining
Northeast Iowa	\$41,907	\$1,173	\$122,796	\$304	\$166,180	\$48,419
North Iowa Area	\$44,563	\$15,808	\$166,576	\$11,443	\$238,391	\$241,892
Iowa Lakes	\$58,247	\$4,561	\$143,980	\$4,317	\$211,104	\$18,959
Northwest Iowa	\$0	\$0	\$105,162	\$0	\$105,162	\$17,325
Iowa Central	\$44,637	\$0	\$174,980	\$107	\$219,724	\$0
Iowa Valley	\$5,515	\$0	\$87,279	\$69,450	\$162,244	\$10,184
Hawkeye	\$39,277	\$6,662	\$209,040	\$6,867	\$261,846	\$0
Eastern Iowa	\$39,465	\$14,963	\$242,079	\$35,153	\$331,660	\$0
Kirkwood	\$96,483	\$15,752	\$474,729	\$20,165	\$607,129	\$0
Des Moines Area	\$80,658	\$268	\$494,632	\$74,198	\$649,756	\$0
Western Iowa Tech	\$3,000	\$1,389	\$210,791	\$1,606	\$216,787	\$0
Iowa Western	\$30,679	\$1,047	\$170,529	\$34,071	\$236,326	\$13,261
Southwestern	\$13,532	\$770	\$105,102	\$3,081	\$122,484	\$3,733
Indian Hills	\$64,455	\$4,718	\$143,878	\$67,911	\$280,963	\$2,111
Southeastern	\$24,547	\$1,477	\$146,170	\$190	\$172,384	\$6,077
Total	\$586,966	\$68,588	\$2,997,724	\$328,863	\$3,982,140	\$361,961
% of Total	14.7%	1.7%	75.3%	8.3%	100.0%	

TABLE 3B: AEL PROGRAM EXPENDITURES BY COLLEGE, STATE ESL: FY19

College	Administrative	Professional Development	ELS Instruction		Total Expenditures	Allocation Remaining
			Instruction	ELS Online Platform		
Northeast Iowa	\$6,832	\$0	\$18,164	\$1,571	\$26,567	\$12,720
North Iowa Area	\$0	\$102	\$31,492	\$1,436	\$33,029	\$2,872
Iowa Lakes	\$0	\$0	\$30,079	\$1,253	\$31,332	\$0
Northwest Iowa	\$5,744	\$0	\$39,716	\$1,595	\$47,055	\$0
Iowa Central	\$0	\$0	\$66,753	\$2,781	\$69,534	\$0
Iowa Valley	\$0	\$27	\$71,573	\$2,983	\$74,583	\$0
Hawkeye	\$2,354	\$0	\$73,803	\$3,173	\$79,330	\$0
Eastern Iowa	\$0	\$0	\$80,215	\$3,342	\$83,557	\$0
Kirkwood	\$0	\$984	\$127,239	\$5,343	\$133,566	\$0
Des Moines Area	\$13,919	\$1,820	\$351,207	\$15,289	\$382,235	\$0
Western Iowa Tech	\$532	\$0	\$129,964	\$4,716	\$135,212	\$0
Iowa Western	\$0	\$0	\$45,461	\$2,018	\$47,479	\$7,603
Southwestern	\$0	\$375	\$31,466	\$1,278	\$33,120	\$11,784
Indian Hills	\$1,955	\$0	\$51,192	\$2,214	\$55,361	\$0
Southeastern	\$5,283	\$0	\$22,046	\$1,285	\$28,614	\$9,299
Total	\$36,618	\$3,308	\$1,170,369	\$50,277	\$1,260,573	\$44,278
% of Total	2.9%	0.3%	92.8%	4.0%		

TABLE 3C: AEL PROGRAM EXPENDITURES BY COLLEGE, STATE AEL: FY18

College	Administrative	Professional Development	AEL Instruction	HSED Expenses	Total Expenditures	Allocation Remaining
Northeast Iowa ¹	\$52,114	\$658	\$117,424	\$795	\$170,991	\$23,026
North Iowa Area	\$36,534	\$13,888	\$146,897	\$11,692	\$209,012	\$285,907
Iowa Lakes	\$34,220	\$245	\$94,438	\$850	\$129,753	\$50,155
Northwest Iowa ¹	\$17,871	\$0	\$114,000	\$0	\$131,871	\$33,989
Iowa Central	\$28,220	\$0	\$191,406	\$98	\$219,724	\$0
Iowa Valley ²	\$5,490	\$2,831	\$164,582	\$1,371	\$174,274	\$0
Hawkeye	\$39,277	\$13,760	\$201,504	\$7,306	\$261,846	\$0
Eastern Iowa	\$37,869	\$7,078	\$244,828	\$41,885	\$331,660	\$0
Kirkwood	\$96,768	\$9,984	\$483,283	\$17,095	\$607,129	\$0
Des Moines Area	\$27,587	\$0	\$515,152	\$107,017	\$649,756	\$0
Western Iowa Tech	\$9,884	\$1,412	\$201,045	\$16,669	\$229,009	\$1,409
Iowa Western	\$33,973	\$789	\$155,523	\$29,675	\$219,960	\$15,792
Southwestern	\$13,532	\$3,025	\$93,159	\$9,909	\$119,625	\$36,007
Indian Hills	\$107,717	\$4,882	\$148,029	\$51,949	\$312,578	\$0
Southeastern	\$24,547	\$6,435	\$163,066	\$2,326	\$196,374	\$14,817
Total	\$565,602	\$64,987	\$3,034,336	\$298,635	\$3,963,560	\$461,102
% of Total	14.3%	1.6%	76.6%	7.5%	100.0%	

¹ Updates to reported values for AEL Instruction and Total Expenditure resulted in a revised Allocation Remaining.

TABLE 3D: AEL PROGRAM EXPENDITURES BY COLLEGE, STATE ESL: FY18

College	Administrative	Professional Development	ESL Instruction	Total Expenditures	Allocation Remaining
Northeast Iowa ¹	\$23,715	\$0	\$15,103	\$38,818	\$0
North Iowa Area	\$0	\$0	\$34,820	\$34,820	\$0
Iowa Lakes	\$0	\$0	\$31,856	\$31,856	\$0
Northwest Iowa ¹	\$5,810	\$0	\$30,989	\$36,799	\$7,169
Iowa Central	\$0	\$0	\$69,545	\$69,545	\$0
Iowa Valley ²	\$0	\$0	\$71,432	\$71,432	\$0
Hawkeye	\$4,638	\$0	\$69,542	\$74,180	\$0
Eastern Iowa	\$0	\$1,964	\$84,466	\$86,430	\$0
Kirkwood	\$0	\$53	\$128,647	\$128,700	\$0
Des Moines Area	\$17,711	\$1,859	\$368,199	\$387,770	\$0
Western Iowa Tech	\$429	\$0	\$134,227	\$134,656	\$17,323
Iowa Western	\$0	\$0	\$45,113	\$45,113	\$4,628
Southwestern	\$0	\$0	\$33,644	\$33,644	\$12,944
Indian Hills	\$2,076	\$0	\$56,857	\$58,933	\$0
Southeastern	\$5,990	\$2,636	\$63,640	\$72,266	\$5,791
Total	\$60,370	\$6,512	\$1,238,081	\$1,304,963	\$47,854
% of Total	4.6%	0.5%	94.9%	100.0%	

FIGURE 1A: AEL PROGRAM EXPENDITURES BY QUARTER, STATE AEL: FY19

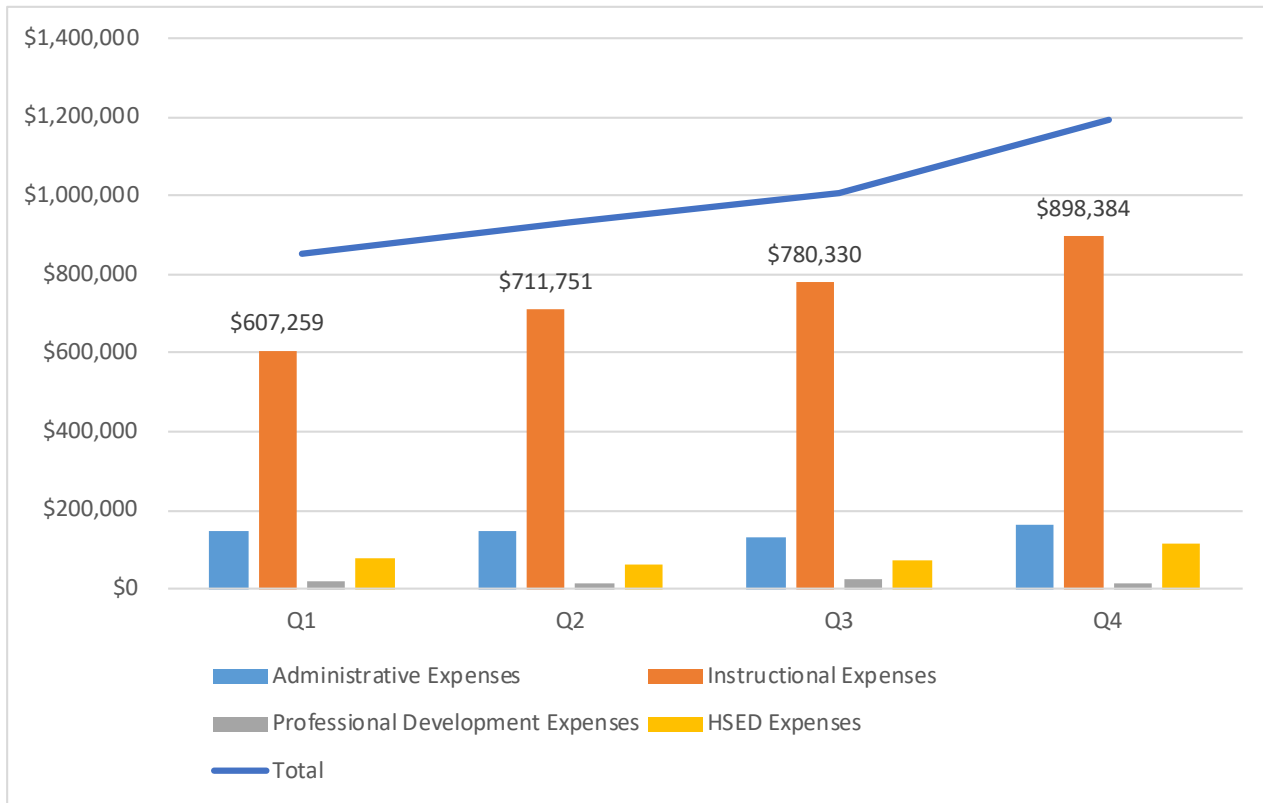


FIGURE 1B: AEL PROGRAM EXPENDITURES BY QUARTER, STATE ESL: FY19

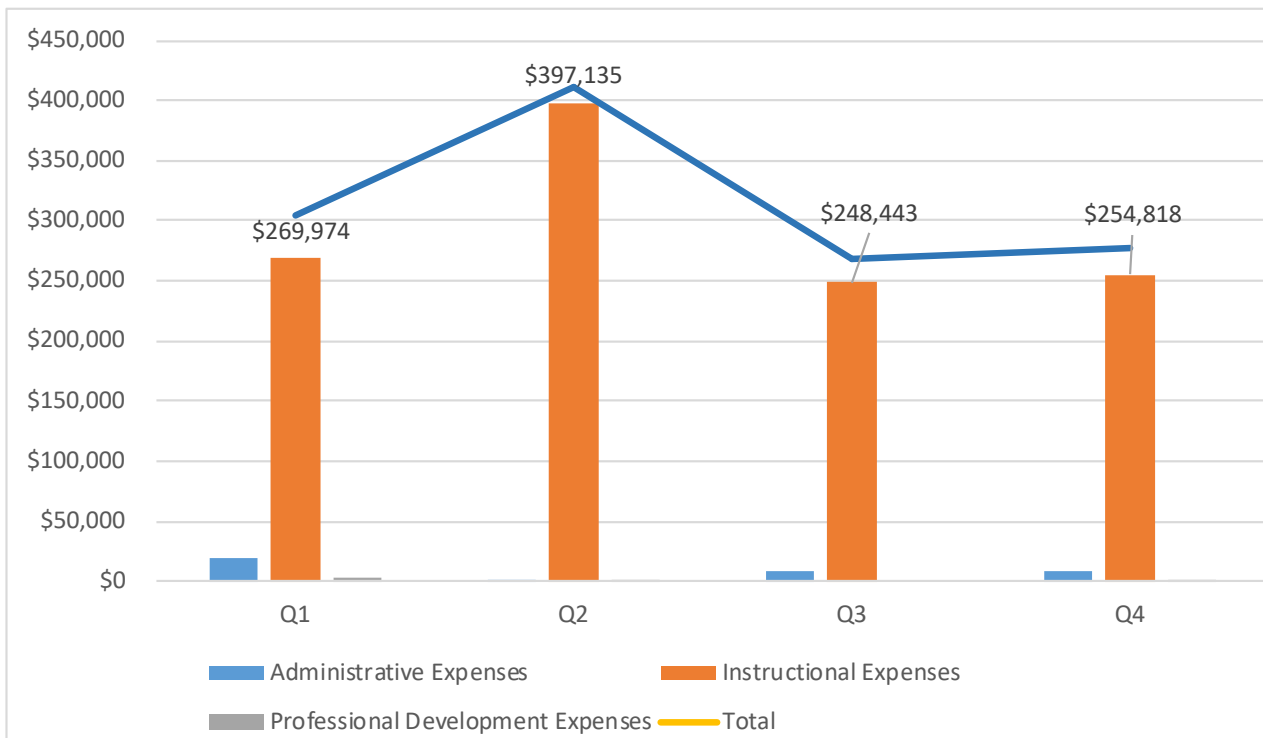


TABLE 4A: AEL PROGRAM EXPENDITURES BY COLLEGE, FEDERAL AEL: FY19

College	Administrative	Professional Development	AEL Instruction	IELCE Expenses	Total Expenditures	Allocation Remaining
Northeast Iowa	\$14,850	\$3,515	\$121,469	\$0	\$139,834	\$39,820
North Iowa Area	\$13,741	\$4,241	\$53,861	\$0	\$71,844	\$45,417
Iowa Lakes	\$8,589	\$3,164	\$53,519	\$0	\$65,272	\$37,020
Northwest Iowa ¹	\$13,914	\$4,347	\$90,390	\$0	\$108,652	\$4,984
Iowa Central	\$8,915	\$20,853	\$166,153	\$14,250	\$210,171	\$775
Iowa Valley ²	\$0	\$8,645	\$95,882	\$0	\$104,527	\$45,463
Hawkeye	\$12,346	\$7,804	\$196,576	\$38,000	\$254,726	\$0
Eastern Iowa	\$40,175	\$9,860	\$250,572	\$33,150	\$333,757	\$3,792
Kirkwood	\$9,245	\$9,143	\$267,648	\$24,559	\$310,595	\$229,343
Des Moines Area	\$28,753	\$19,049	\$427,922	\$12,547	\$488,271	\$346,708
Western Iowa Tech	\$18,962	\$4,795	\$209,089	\$14,123	\$246,968	\$23,016
Iowa Western	\$17,119	\$5,802	\$113,796	\$0	\$136,717	\$57,072
Southwestern	\$10,033	\$4,427	\$70,519	\$0	\$84,979	\$3,326
Indian Hills	\$7,023	\$8,557	\$119,193	\$14,250	\$149,023	\$428
Southeastern	\$14,141	\$3,392	\$64,751	\$0	\$82,284	\$77,230
Total	\$217,806	\$117,594	\$2,301,342	\$150,880	\$2,787,622	\$914,394
% of Total	7.8%	4.2%	82.6%	5.4%	100.0%	

TABLE 4B: AEL PROGRAM EXPENDITURES BY COLLEGE, FEDERAL AEL: FY18

College	Administrative	Professional Development	AEL Instruction	EL/Civics Instruction	Total Expenditures	Allocation Remaining
Northeast Iowa	\$11,502	\$2,300	\$75,550	\$0	\$89,351	\$46,484
North Iowa Area	\$12,603	\$3,546	\$81,840	\$0	\$97,990	\$7,782
Iowa Lakes	\$3,565	\$1,470	\$59,430	\$9,623	\$74,088	\$9,529
Northwest Iowa ¹	\$7,450	\$6,316	\$50,558	\$2	\$64,326	\$16,210
Iowa Central	\$9,312	\$7,224	\$187,682	\$14,250	\$218,468	\$100
Iowa Valley ²	\$0	\$3,429	\$113,391	\$0	\$116,820	\$16,259
Hawkeye	\$16,771	\$4,400	\$186,247	\$38,000	\$245,418	\$0
Eastern Iowa	\$38,885	\$6,040	\$237,957	\$26,850	\$309,732	\$23,202
Kirkwood	\$8,366	\$6,931	\$227,330	\$38,147	\$280,774	\$151,222
Des Moines Area	\$19,859	\$2,619	\$502,555	\$4,052	\$529,086	\$115,677
Western Iowa Tech	\$13,376	\$1,796	\$234,841	\$14,250	\$264,263	\$13,855
Iowa Western	\$17,355	\$16,662	\$83,320	\$0	\$117,337	\$29,325
Southwestern	\$9,896	\$16,107	\$66,663	\$0	\$92,667	\$992
Indian Hills	\$6,590	\$5,355	\$112,134	\$14,250	\$138,329	\$1,030
Southeastern	\$14,157	\$6,529	\$120,449	\$0	\$141,134	\$12,343
Total	\$189,686	\$90,723	\$2,339,948	\$159,423	\$2,779,781	\$444,010
% of Total	6.8%	3.3%	84.2%	5.7%	100.0%	

FIGURE 2: AEL PROGRAM EXPENDITURES BY QUARTER, FEDERAL AEL/IELCE: FY19

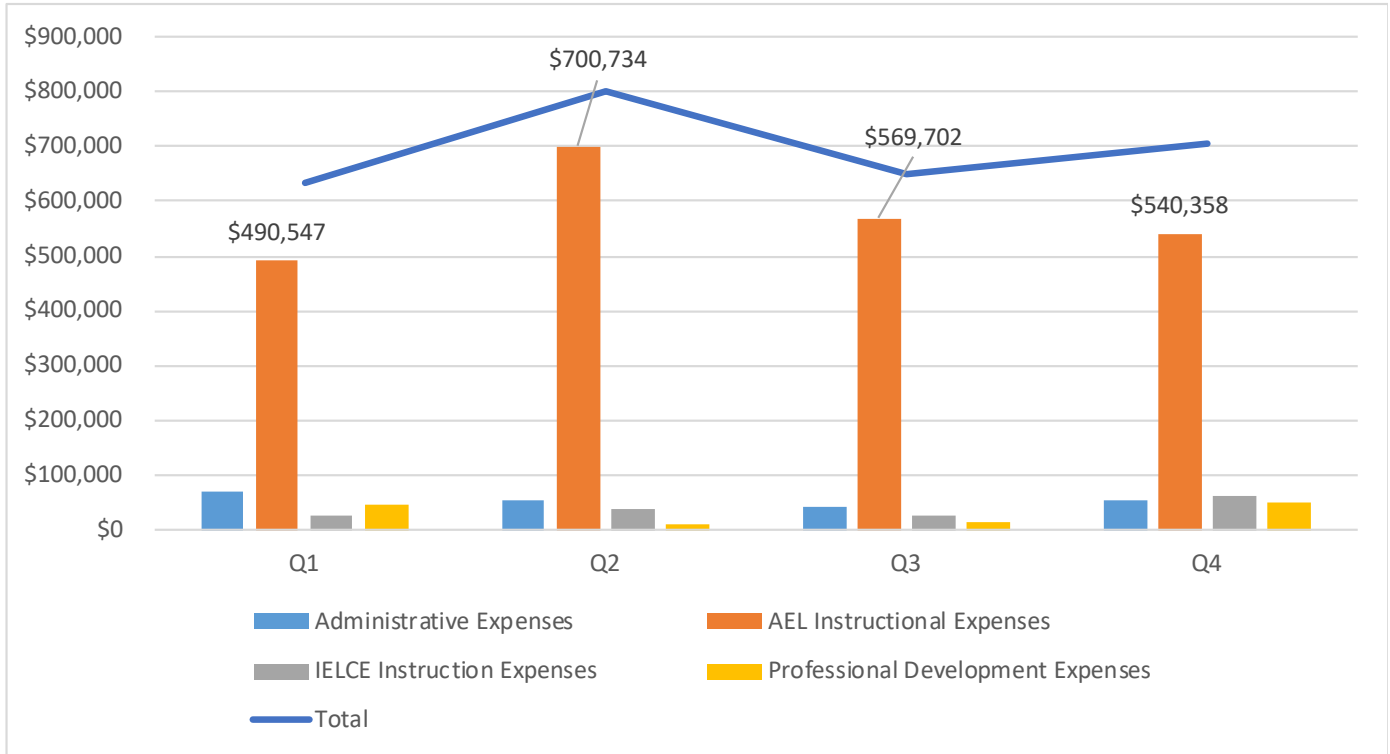


TABLE 5A: AEL EDUCATIONAL FUNCTIONING LEVEL GAINS(EFL)¹ BY COLLEGE: FY19

College	Adult Basic Education ²	Adult Secondary Education ³	English as Second Language ⁴	Participants (total initial participation)	Participant Rate ⁵	Total Post-Tested ⁶	Post-Test Rate ⁷	EFL ¹ (in the first Period of Participation)
Northeast Iowa	223	53	42	318	69.0%	107	34.7%	33.6%
North Iowa Area	155	25	65	245	63.6%	109	45.6%	39.6%
Iowa Lakes	86	27	89	202	74.0%	98	49.5%	36.5%
Northwest Iowa	79	19	120	218	75.2%	145	67.4%	40.1%
Iowa Central	484	144	292	920	96.4%	625	71.6%	56.1%
Iowa Valley	128	37	228	393	81.4%	250	64.9%	49.8%
Hawkeye	177	62	652	891	69.4%	570	65.1%	52.7%
Eastern Iowa	614	129	240	983	68.1%	424	44.2%	46.9%
Kirkwood	684	149	667	1,500	59.2%	884	59.7%	42.2%
Des Moines Area	1,311	188	1,236	2,735	74.0%	1,211	44.9%	39.7%
Western Iowa Tech	294	47	546	887	74.5%	523	59.5%	46.1%
Iowa Western	368	129	82	579	81.5%	295	54.4%	45.8%
Southwestern	78	28	49	155	52.0%	94	64.8%	53.6%
Indian Hills	179	47	200	426	70.8%	220	52.9%	34.6%
Southeastern	430	133	24	587	77.9%	266	47.2%	36.6%
Total	5,290	1,217	4,532	11,039	71.9%	5,821	54.0%	43.8%
% of Total	47.9%	11.0%	41.1%	100.0%	-	-	-	-

TABLE 5B: AEL EDUCATIONAL FUNCTIONING LEVEL GAINS (EFL)¹ BY COLLEGE: FY18

College	Adult Basic Education ²	Adult Secondary Education ³	English as Second Language ⁴	Participants (total initial participation)	Participant Rate ⁵	Total Post-Tested ⁶	Post-Test Rate ⁷	EFL ¹ (in the first Period of Participation)
Northeast Iowa	182	45	84	311	65.8%	141	47.2%	36.6%
North Iowa Area	171	30	58	259	71.3%	152	59.8%	48.7%
Iowa Lakes	73	14	55	142	63.7%	90	63.4%	38.0%
Northwest Iowa	49	13	125	187	64.5%	138	74.2%	44.3%
Iowa Central	537	122	360	1,019	86.1%	753	77.0%	57.9%
Iowa Valley	139	40	299	478	83.9%	384	81.9%	60.9%
Hawkeye	172	64	547	783	71.4%	598	77.4%	55.5%
Eastern Iowa	611	107	267	985	73.6%	618	64.3%	46.0%
Kirkwood	794	205	685	1,684	60.6%	1,032	63.0%	43.6%
Des Moines Area	1,233	157	1,386	2,776	74.7%	1,588	58.0%	43.8%
Western Iowa Tech	278	71	529	878	73.5%	576	66.7%	51.4%
Iowa Western	352	106	99	557	75.8%	296	56.2%	41.3%
Southwestern	96	37	41	174	54.5%	114	68.3%	55.4%
Indian Hills	177	46	191	414	68.8%	264	65.0%	39.8%
Southeastern	441	124	35	600	75.0%	338	59.3%	42.1%
Total	5,305	1,181	4,761	11,247	71.1%	7,082	64.6%	46.9%
% of Total	47.2%	10.5%	42.3%	100.0%				

1 Participants with at least 40+ hours of instruction and post-test with a gain, sufficient to transition to the next level of instruction (reflected as a one to two grade-level equivalency gain).

2 Includes grade levels 00-08.

3 Includes grade levels 09-12.

4 ESL (English as a Second Language)—Includes grade levels 00-08.

5 Eligible Individuals divided by those who are enrolled as participants (attended 12+ hours).

6 Excludes ABE Level 6.

7 Number post-tested divided by total who achieved an EFL.

FIGURE 3A: AEL PARTICIPANT COMPARISON: FY19 AND FY18

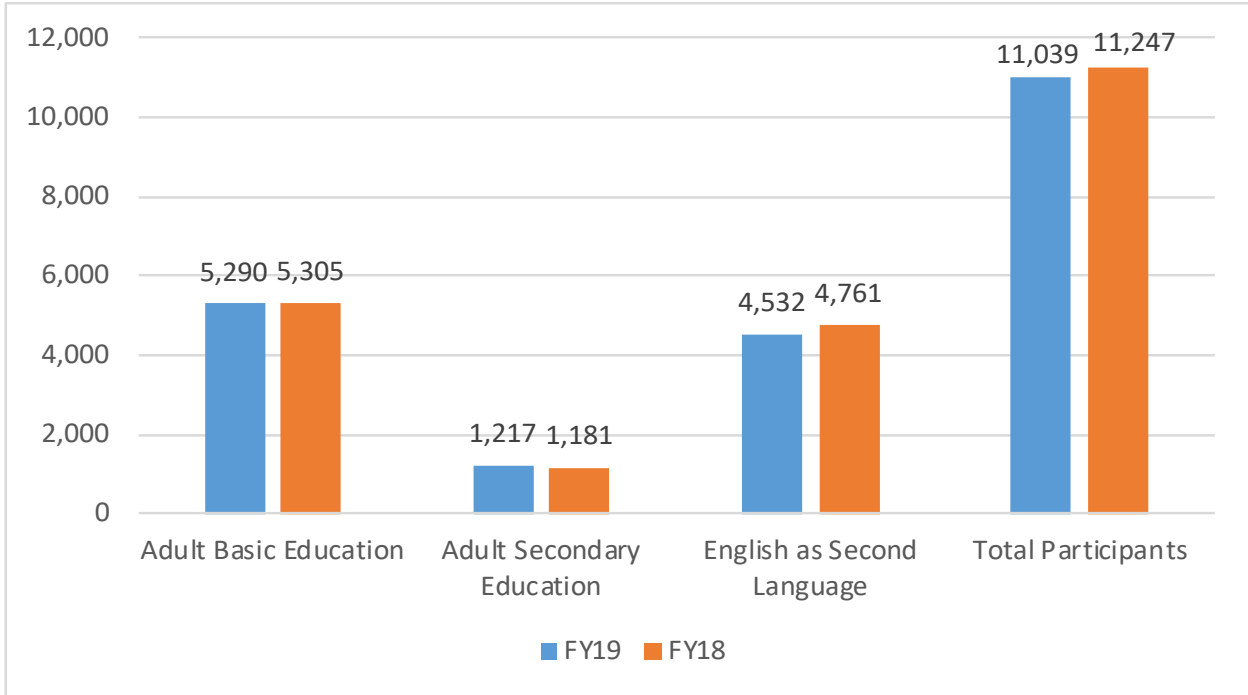


FIGURE 3B: AEL POST-TEST RATE COMPARISON: FY18 AND FY19

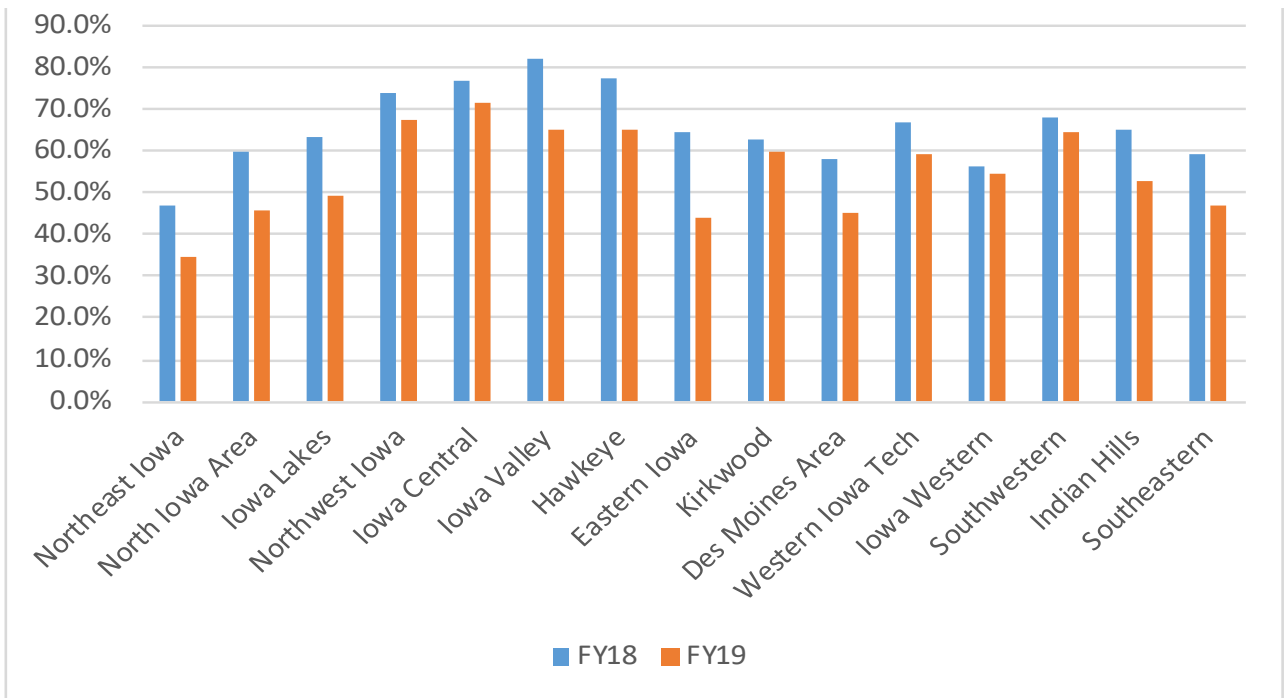


TABLE 6A: AEL PERFORMANCE¹ SUMMARY OF COMPLETERS BY LEVEL: FY19

Level	Total Number of Participants	Total POP ²	POP with MSG ³	MSG Rate ⁴	FY19 State Targets
ABE Level 1	265	269	96	36%	37%
ABE Level 2	627	641	223	35%	45%
ABE Level 3	1,447	1,488	536	36%	42%
ABE Level 4	2,951	3,035	1,284	42%	42%
ABE Level 5	953	971	586	60%	59%
ABE Level 6	264	266	183	69%	--
ABE Subtotal	6,507	6,670	2,908	44%	--
ESL Level 1	272	274	147	54%	44%
ESL Level 2	549	559	277	50%	50%
ESL Level 3	1,162	1,175	550	47%	50%
ESL Level 4	1,168	1,190	485	41%	45%
ESL Level 5	862	873	416	48%	45%
ESL Level 6	519	524	156	30%	28%
ESL Subtotal	4,532	4,595	2,031	44%	--
Total	11,039	11,265	4,939	44%	

TABLE 6B: AEL PERFORMANCE¹ SUMMARY OF COMPLETERS BY LEVEL: FY18

Level	Total Number of Participants	Total POP ²	POP with MSG ³	MSG Rate ⁴	FY18 State Targets
ABE Level 1	184	191	83	43%	41%
ABE Level 2	635	653	287	44%	43%
ABE Level 3	1,443	1,491	652	44%	44%
ABE Level 4	3,043	3,146	1,308	42%	41%
ABE Level 5	904	921	554	60%	51%
ABE Level 6	277	281	173	62%	--
ABE Subtotal	6,486	6,683	3,057	46%	--
ESL Level 1	337	344	187	54%	48%
ESL Level 2	580	592	306	52%	49%
ESL Level 3	1,204	1,226	664	54%	49%
ESL Level 4	1,256	1,295	607	47%	43%
ESL Level 5	862	882	432	49%	46%
ESL Level 6	522	543	177	33%	26%
ESL Subtotal	4,761	4,882	2,373	49%	--
Total	11,247	11,565	5,430	47.0%	

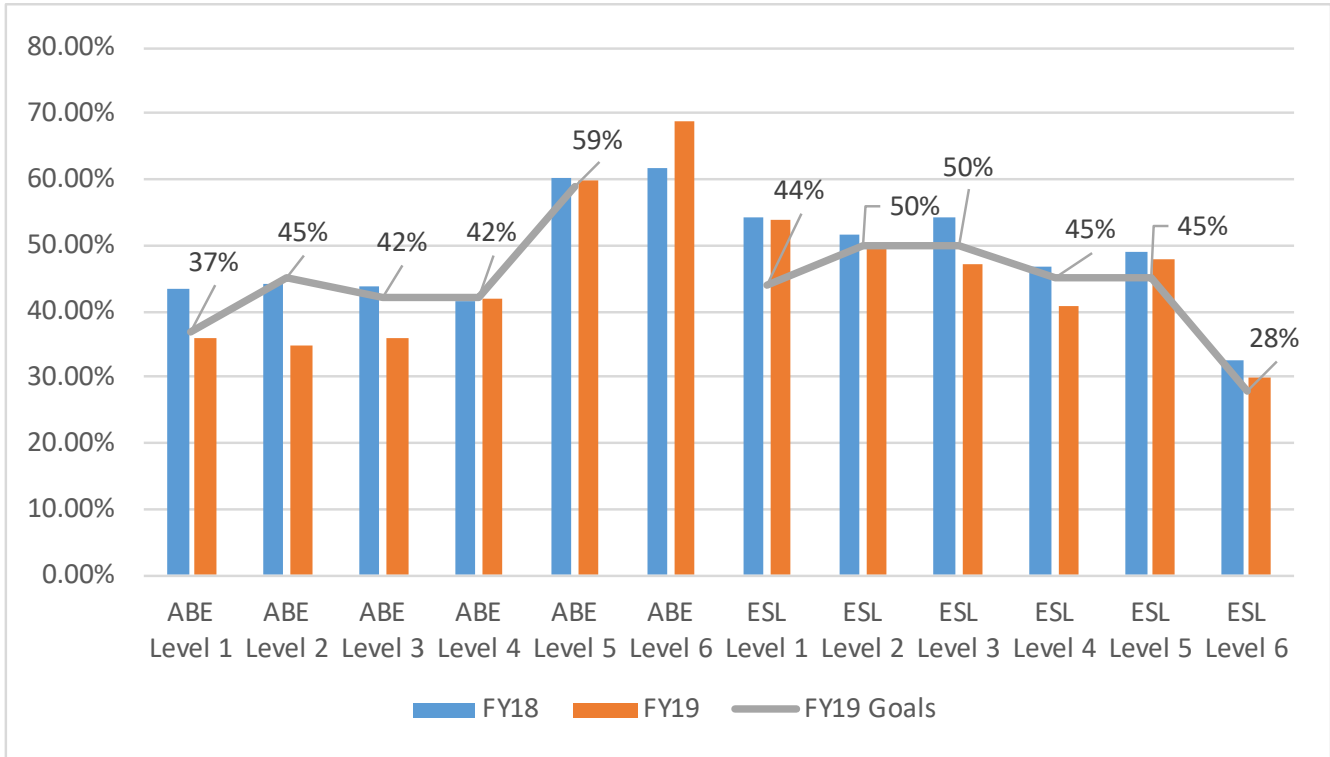
1 Performance compares MSG against federally negotiated targets for the state.

2 Total POP includes total periods of participation.

3 POP with MSG (Period of Participation with Measurable Skill Gain) determines MSG by post-testing and achieving a sufficient score to move to the next EFL.

4 MSG Rate = POP with MSG/Total POP

FIGURE 4: AEL PERFORMANCE SUMMARY BY LEVEL: FY18 AND FY19





COMMUNITY COLLEGES & WORKFORCE PREPARATION

PROSPERITY THROUGH EDUCATION

www.educateiowa.gov/ccpublications

The Division of Community Colleges and Workforce Preparation within the Iowa Department of Education administers a variety of diverse programs that enhance Iowa's educational system and help to prepare a skilled and knowledgeable workforce. Divided between two bureaus — the Bureau of Community Colleges and the Bureau of Career and Technical Education — the Division is committed to providing and supporting opportunities for lifelong learning. In addition to working with Iowa's 15 public community colleges on state accreditation, program approval, equity review, and data reporting, guidance is also provided in the areas of career and technical education, workforce training and economic development, adult education and literacy, military education, the state mandated OWI education program, the GAP Tuition and PACE programs, Senior Year Plus, the National Crosswalk Service Center, and the Statewide Intermediary Network program.