

CONTENTS

- About HACU 2
- HACU Governing Board 3
- Corporate and Philanthropic Council 4
- Message from the President/CEO and Chair of the Board 5
- Strengthening Our Voice in Numbers/Membership 7
- Advocating for Hispanic Higher Education 9
- Opening Doors to a Diverse Workforce/HACU National Internship Program 11
- Investing in College Students 13
- National Capitol Forum on Hispanic Higher Education 14
- ACT on the DREAM Summit 14
- International Conference 15
- Annual Conference and Pre/Post events 16
- Annual Conference Special Events, Sponsors and Partners 17
- Honoring Champions of Hispanic Higher Education Success/HACU Awards 18
- La HACHE de HACU/Donors 19
- Financials 20
- Calendar of Events 21
- HACU Membership 22
- National Member Institutions 22
- International Member Institutions 27
- Faculty and Staff Affiliates 27
- Student Affiliates 29
- Hispanic-Serving School District Affiliates 30
- Trustee Affiliates 30



ABOUT HACU

Hispanic Association of Colleges and Universities

For over thirty years, the Hispanic Association of Colleges and Universities (HACU) has advocated on behalf of Hispanic higher education in the U.S. and around the world.

The mission of the association is to Champion Hispanic Success in Higher Education. HACU fulfills its mission by: promoting the development of member colleges and universities; improving access to and the quality of postsecondary educational opportunities for Hispanic students; and meeting the needs of business, industry and government through the development and sharing of resources, information and expertise.

HACU is the only organization that represents existing and emerging Hispanic-Serving Institutions (HSIs). HSIs today represent 13 percent of all institutions of higher education that enroll 62 percent of Hispanic undergraduates.

HACU serves its membership through advocacy, conferences, partnerships and educational programs, and offers scholarships and internship opportunities for students.

HACU is a nonprofit 501(c)(3) association with a membership of more than 470 colleges and universities in the U.S., Puerto Rico, Latin America and Spain. HACU's headquarters are located in San Antonio, Texas, and regional offices are in Washington, D.C., and Sacramento, California.



HACU GOVERNING BOARD 2017-18



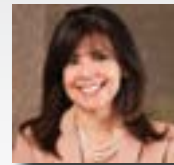
Félix V. Matos Rodríguez, Chair
President
Queens College, CUNY
Queens, N.Y.



Howard Gillman
Chancellor
University of California, Irvine
Irvine, Calif.



Monte E. Pérez, Vice Chair
President
Los Angeles Mission College
Sylmar, Calif.



Maria Harper-Marinick
Chancellor
Maricopa Community Colleges
Tempe, Ariz.



Beatriz T. Espinoza, Treasurer
President
Coastal Bend College
Beeville, Texas



Olga Hugelmeyer
Superintendent of Schools
Elizabeth Public Schools
Elizabeth, N.J.



Sue Henderson, Secretary
President
New Jersey City University
Jersey City, N.J.



Fernando León García
Rector
CETYS Universidad Baja California
Mexicali, Baja California
México



Tomás D. Morales, Past-Chair
President
California State University, San Bernardino
San Bernardino, Calif.



Joe Mella
Finance Division
Goldman Sachs
New York, N.Y.



Michael D. Amiridis
Chancellor
University of Illinois at Chicago
Chicago, Illi.



Carlos M. Padín Bibiloni
Chancellor
Universidad Metropolitana
San Juan, Puerto Rico



Franklyn M. Casale
President
St. Thomas University
Miami, Fla.



Andrew Sund
President
Heritage University
Toppenish, Wash.



Joseph I. Castro
President
California State University, Fresno
Fresno, Calif.



Margaret Venable
President
Dalton State College
Dalton, Georgia



Mike Flores
President
Palo Alto College
San Antonio, Texas



Ex-Officio:
Antonio R. Flores
President & CEO
HACU

CORPORATE AND PHILANTHROPIC COUNCIL 2017-18

Joe Mella, Chair
Finance Division
Goldman Sach

Jim Fjelstul, Vice Chair
Senior Vice President
Sodexo

Jorge Caballero
Senior Partner
Deloitte Tax LLP

Carlos Figueroa
Vice President, Talent Acquisition
Travelers Insurance

Michael Nettles
Senior Vice President, Policy
Evaluation and Research
Educational Testing Service

Christine Ortega
Senior Advisor, International Community
Affairs & Grassroots
Southwest Airlines

Janet Padilla
Chief Operating Officer,
Ford Next Generation Learning (NGL)
Ford

Dominic Rotondi
Executive Director
Nelnet

Alberto Senior
Director, Multicultural Community
Commerce & Partnerships
MillerCoors

Raul Villarreal
Area Manager
General Motors

Peter Villegas
Vice President - Office of Latin Affairs
The Coca-Cola Company

Luke Visconti
Chief Executive Officer
DiversityInc Media, LLC



MESSAGE FROM THE PRESIDENT/CEO AND CHAIR OF THE GOVERNING BOARD



The Hispanic Association of Colleges and Universities (HACU) set new records in 2017 in membership numbers and attendance at our Annual Conference, held in San Diego. The HACU National Internship program also celebrated a milestone of 25 years of placing student in internships across the nation.

We welcomed the first members of a new Trustee Affiliate category to broaden our reach in national advocacy efforts and deepen their understanding of issues in Hispanic-Serving Institutions (HSIs). We believe that including the voices of trustees from our member institutions will increase the visibility of HSIs and ensure that these institutions receive the support necessary to educate America's future leaders in a global workforce.

2017 also saw some of our member institutions grappling with the impact of hurricanes, earthquakes or fires. Many other members answered the call to assist in relief efforts and to help students or faculty displaced by these disasters.

Another challenge has been posed by the Administration's rescission of the DACA program. For more than a decade and a half, Congress has failed to agree on a permanent legislative resolution to the status of millions of undocumented residents. Now even the deferral of deportation action for young people brought to the U.S. as children is hanging on by temporary court orders as Congress and the Administration seem unable to pass any immigration legislation. Once again our membership has stepped up, as more vocal advocates of DREAMers than ever before and many are strengthening their efforts to make DREAMers know they are welcome and supported on campus. But our most urgent

challenge is to find a permanent and humane resolution for the 800,000 DACA recipients now once again imperilled.

HACU advocacy efforts have targeted the passage of the Bar Removal of Individuals who Dream and Grow our Economy Act (BRIDGE) Act (S. 128 and HR 496), which would extend the Deferred Action for Childhood Arrivals (DACA) program, and the passage of the DREAM Act itself.

HACU held an Act on the DREAM Act Summit in April, which brought together a wide array of leaders, thinkers and advocates dedicated to advancing the cause of immigration reform and supporting DREAMers attending colleges and universities across the nation.

On the state level, HACU has worked to enlist Assembly members in California in support of a HACU proposal to revise the higher education funding formula there in order to better retain, transfer, and graduate underrepresented students. Visits to individual members of the California legislature were followed by a presentation at an Assembly Budget Sub Committee Hearing in March which resulted in securing coauthors for HACU's Higher Education Funding Formula legislation. A California HSI Summit was held in October to update membership on our progress.

In Washington, HACU has been working with members of the U.S. House of Representatives to launch the Congressional Hispanic-Serving Institutions (HSI) Caucus to ensure policy makers and their staff understand the impact of HSIs in their districts, states and across the nation.

After 15 years of HACU advocacy effort, funding for a National Science Foundation (NSF) grant program supporting undergraduate science, technology, engineering, and mathematics (STEM) education at Hispanic-Serving Institutions (HSIs) was approved by the 115th Congress as part of the final Fiscal Year 2017 Omnibus spending bill.

With the support of members and allies, HACU succeeded in preserving and increasing congressional appropriations to Hispanic-Serving Institutions for FY 2018. The FY 2018 \$1.3 trillion appropriations included a total increase of \$31.7 million in funding for HSIs. A 14.3% increase for the two most critical HSI programs at the U.S. Department of Education, HEA Title V-Part A (undergraduate education) and HEA Title V-Part B (graduate education), will bring the total funding for Part A to \$123.2 million and Part B to \$11.05 million. In addition, the funding for the new National Science Foundation (NSF) program for HSIs was doubled to \$30 million in FY 2018. Funding for HSIs under Title VII of the Farm Bill remained at \$9.2 million for FY 2018.

Our visits across the nation also included a "HACU on the Road" gathering held at California State University, Long Beach (CSULB) to discuss the state of Hispanic higher education. HACU also held a successful STEM Summit at CSULB. We continue to

host HACU University Tours for promising high school students through a partnership with the U.S. Army and visited New Mexico State University in Las Cruces, NM and the University of Texas at San Antonio.

HACU's largest student program, the HACU National Internship Program (HNIP), continues to place students in internships nationwide with federal sponsors and corporate partners committed to diversifying their workforce. In 2017, 459 students had the opportunity to experience the professional world firsthand as interns.

HACU and its partners provided scholarships and leadership awards through such opportunities as: Southwest Airlines Lanzate! Travel awards, Hispanic College Quiz show scholarships, Denny's Hungry for Education scholarships, Ford Motor Company Fund, Big Red ¡Avance! Scholarships, Oracle Scholarships, Kia Motors America, Inc. Scholarships, Café Bustelo El Café del Futuro Scholarships Essay Contest and Deloitte's Jorge Caballero Student Leadership Award. An institutional award in partnership with ecoAmerica was awarded to the University of the Incarnate Word for their work in sustainability.

HACU conferences and events provide organized platforms for sharing Hispanic higher education best practices and resources and opportunities for networking with colleagues across the country and around the world.

Our 12th International Conference, in Costa Rica, was opened by the President of Costa Rica himself, inaugurating two days of international exchange. For a second year an international Student Track was offered and students had the opportunity to visit four local universities in Costa Rica.

HACU's 22nd National Capitol Forum targeted key legislative issues and culminated in state delegations of faculty, staff and students visiting their members of Congress on Capitol Hill.

HACU's 31st Annual Conference included among its events a pre-conference Youth Leadership Development at National University focused on STEM. The Latino Higher Education Leadership Institute, PreK-12/Higher Education Collaboration Symposium, Trustees' Forum, Deans' Forum were all part of the line-up of pre- and post-conference events that helped draw record-breaking crowds to the premiere Hispanic higher education conference in San Diego, CA.

Among the conference highlights was the induction of the HACU Hall of Champions honoring the late Milton A. Gordon, Ph.D., former president, California State University, Fullerton, and Eliseo "Cheo" Torres, Ph.D., vice president of Student Affairs, University of New Mexico. Our annual HACU Awards also recognized member institutions, corporate, federal and legislative supporters of Hispanic education.

These are just a few highlights of the association's work supported by HACU's staff from its national headquarters in San Antonio, Texas, and regional offices in Washington, D.C., and Sacramento, California.

We want to recognize the dedication and vision of the college, university, and corporate leaders that comprise HACU's Governing Board, including its newly elected officers and members for 2017-18.

New members include:

Michael D. Amiridis, Ph.D., chancellor of University of Illinois at Chicago; Howard Gillman, Ph.D., chancellor of University of California, Irvine; and Margaret Venable, Ph.D., president of Dalton State College.

HACU 2017-18 officers are:

Chair Félix V. Matos Rodríguez, president of Queens College, CUNY; vice chair Monte E. Pérez, president of Los Angeles Mission College; secretary Sue Henderson, president of New Jersey City University; treasurer Beatriz T. Espinoza, president of Coastal Bend College; and past chair Tomás D. Morales, president of California State University, San Bernardino.

We also thank the following individuals who completed their terms on the Board in 2017:

William V. Flores, former president of the University of Houston, Downtown; James E. Brenneman, former president, Goshen College; Albert A. Cruz, Chair, HACU Alumni Association; and Robert G. Frank, former president, The University of New Mexico.

Our sincere thanks to all those individuals and organizations whose support has made it possible for HACU to advance the cause of Hispanic higher education success in 2017 and beyond. There's room for you too in La HACHE de HACU, the Hispanic Alliance to Champion Higher Education, of which you become a part by contributing to our annual appeal. Please help us make Hispanic student access and success a priority by spreading the word on your campuses and throughout your networks. We are building the future of America.

Cordially,



Antonio R. Flores
President and CEO



Félix V. Matos Rodríguez
HACU Governing Board, Chair
President
Queens College, CUNY
Queens, New York

STRENGTHENING OUR VOICES IN NUMBERS

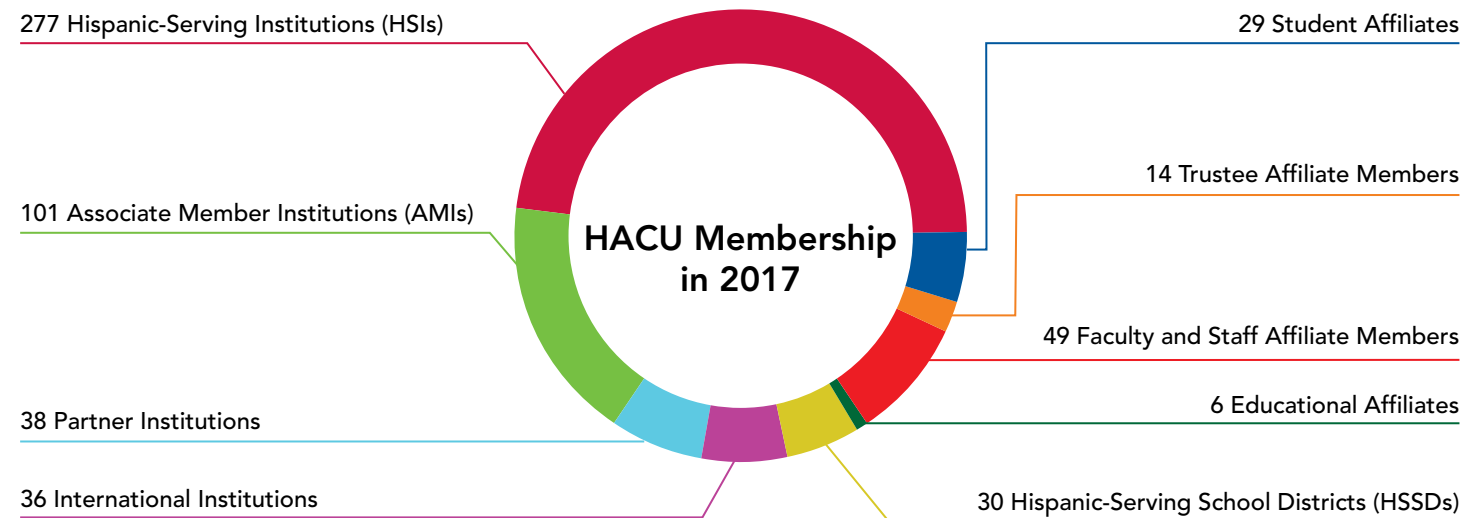
Institutions across the nation and abroad continue to recognize the importance of HACU's mission to champion Hispanic success in higher education. HACU members are committed to improving access to and the quality of postsecondary educational opportunities for Hispanic students.

HACU Membership

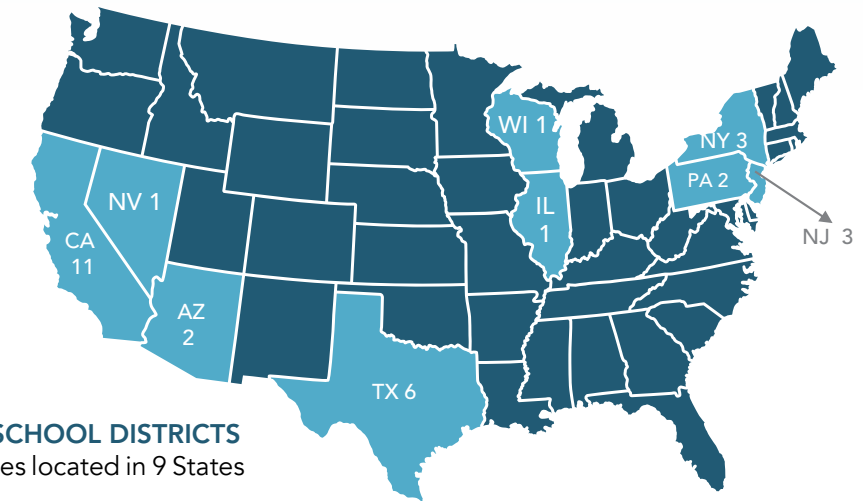
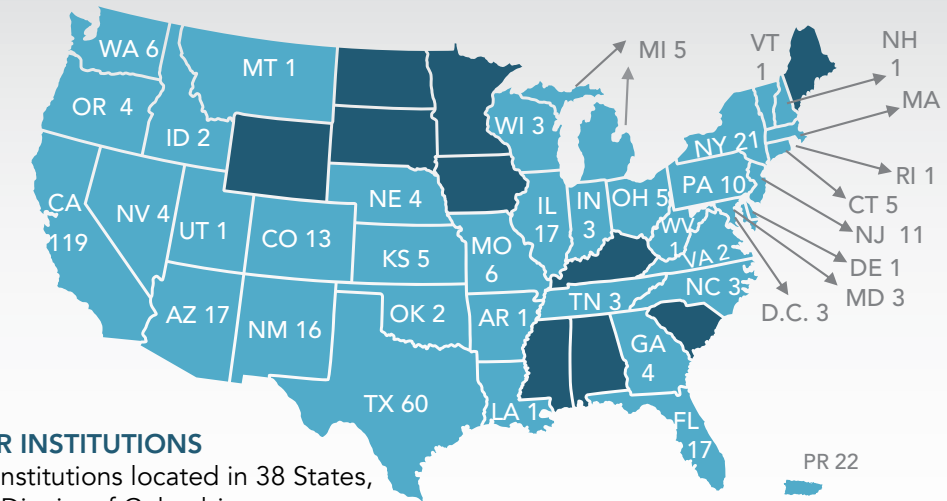
HACU's strength and support continues to grow, and in 2017, members included 482 colleges, universities and school districts located in 38 states, the District of Columbia, Puerto Rico, and eight countries in Latin America and Europe.

Among the total members, new members included: 35 institutions, one educational affiliate, 11 Hispanic-Serving School Districts, 14 faculty and staff affiliate members, 14 trustee affiliate members, and 19 student affiliates.

Membership by category included: 277 Hispanic-Serving Institutions (HSIs); 101 Associate Member Institutions (AMIs); 38 Partner Institutions; 36 International Institutions; 30 Hispanic-Serving School Districts (HSSDs); Six Educational Affiliates; 49 Faculty and Staff Affiliate Members; 14 Trustee Affiliate Members; and 29 Student Affiliates.



HACU MEMBERS ACROSS THE NATION AND BEYOND



ADVOCATING FOR HISPANIC HIGHER EDUCATION

Since the first federal definition of Hispanic-Serving Institutions (HSIs) in 1992, HACU's advocacy efforts have produced well over \$3.1 billion for HSIs and Hispanic higher education. Led by HACU's Government Relations office in Washington, D.C., 2017 advocacy efforts continued their focus on federal funding for member institutions and other issues critical to them.



Strategic alliances with other minority organizations continue to be significant in promoting a legislative agenda for higher education. Through alliances with minority, higher education and other national Hispanic organizations, Hispanic-Serving Institutions increased their visibility and presence in Congress and with the Administration.

HACU's Advocacy Center has over 1,000 individuals registered and assists education advocates in making their voices heard on public policy issues affecting HSIs and our member colleges and universities. The Advocacy Center, HACUAdvocates.net, provides tools and resources to communicate easily with lawmakers and their staff, as well as periodic policy updates and a webinar series.

HACU is an active partner with the Washington Higher Education Secretariat, the National Hispanic Leadership Agenda (NHLEA), the Hispanic Education Coalition, the Alliance for Equity in Higher Education (which serves as a unified voice for minority higher education), the Committee for Education Funding, the Coalition for Teaching Quality, the Higher Education Task Force and other national organizations with a focus on education.

Advocacy addressed key pieces of legislation, reaching all levels of Hispanic education and workforce development. In the still ongoing reauthorization process for the Higher Education Act (HEA), HACU called for the creation of a new Part C to be created under Title V of the HEA for a new grant program to support collaboration between HSIs,

Emerging HSIs, Hispanic-Serving School Districts (HSSDs) and emerging HSSDs for greater student success. HACU also submitted its priorities for HEA reauthorization to the Senate Health, Education, Labor and Pensions Committee. Additionally, in the FY 2017 Omnibus spending bill, HACU worked with Congress to include \$15 million in the Commerce Justice Science Appropriations bill to establish a National Science Foundation (NSF) HSI infrastructure development grant program. This marks the first time NSF will have a dedicated funding program for HSIs to increase the retention and graduation rates of students pursuing associate or baccalaureate degrees in science, technology, engineering, and mathematics (STEM). Government Relations staff consulted regularly with HACU membership for input on multiple policy topics. As an active co-chair of NHLEA's education committee, HACU also worked closely with NHLEA on congressional education strategy.

With the support of members and allies, HACU was successful in preserving and increasing congressional appropriations to Hispanic-Serving Institutions for FY 2018. The FY 2018 \$1.3 trillion appropriations included a total increase of \$31.7 million in funding for HSIs. A 14.3% increase for the two most critical HSI programs at the U.S. Department of Education, HEA Title V-Part A (undergraduate education) and HEA Title V-Part B (graduate education), will bring the total funding for Part A to \$123.2 million and Part B to \$11.05 million. In addition, the funding for the new National Science Foundation (NSF) program for HSIs was doubled to \$30 million in FY 2018. Funding for HSIs under Title VII of the Farm Bill remained at \$9.2 million for FY 2018.

HACU monitored and responded to legislative proposals introduced in the Senate and the House of Representatives by promoting specific legislative language favorable to HSIs and the Hispanic community. A Memorandum of Understanding (MOU) was signed with the Department of State. HACU is working to re-establish the Leadership Group consisting of key agency officials and HSI presidents for the U.S. Departments of Agriculture. HACU also serves on committees advising the U.S. Department of Homeland Security, the U.S. Department of State, and the Office of Personnel Management.

HACU's Western Regional advocacy efforts for member institutions in Arizona, California, Nevada, Oregon and Washington continue to focus on trying to restore higher education funding to pre-recession state budget levels. HACU also supported higher education legislation in the region's state legislatures, including their respective DREAM Acts, student financial aid bills and other college access legislation. HACU continued policy meetings with its California membership to develop and refine a proposal to be brought before the California State Legislature during its next legislative cycle.

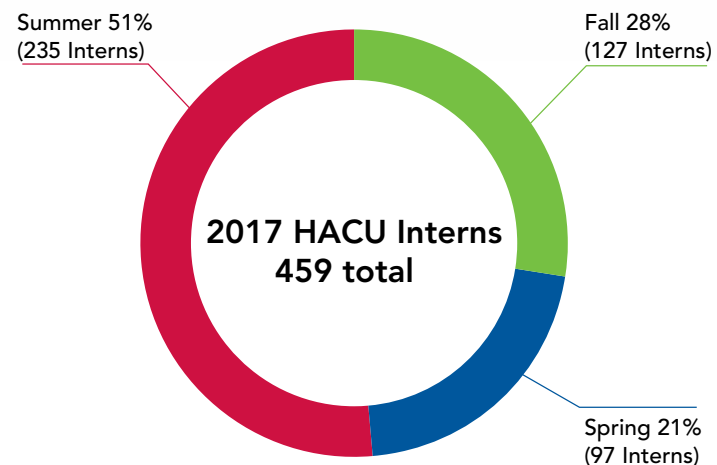


OPENING DOORS TO A DIVERSE WORKFORCE

HACU is dedicated to increasing Hispanic employment in the federal workforce and corporate America, a demographic which remains underrepresented in these sectors.

For more than 25 years, the HACU National Internship Program has provided college students the opportunity to gain career experience while completing their undergraduate and graduate education.

In 2017, HACU placed 459 students in paid internship assignments in the federal and corporate sectors. The interns placed by semester were: 97 interns for the Spring; 235 interns in the summer and 127 interns in the Fall.



Approximately 275 of the total interns were Hispanic students. Women made up more than half of participants with a total of 303. The average grade point of all interns was 3.45 and the average age was 24.

Students participating in the program represented colleges and universities from 32 states, Puerto Rico and the District of Columbia. The locations with the highest concentration of students participating were from California (74), Maryland (74) and Texas (73).

Students served in 163 federal internships in the Washington, D.C., area, 278 federal field offices throughout the United States, 16 corporate internships nationwide with 2 corporate direct hires.

An HNIP PSA was re-produced to promote the 25th anniversary of the program which aired with the "Hispanic College Quiz" show in 82 Markets and in 91 stations.



To date, the HACU National Internship Program has provided more than 12,000 internship opportunities to students and has served as a pipeline for Hispanics to careers in the federal government and private sector.

Many students who have benefited from the internship program and other HACU educational programs are now giving back by serving as a resource for student development and alumni advancement through the HACU Alumni Association.

Programs such as the HACU Alumni Ambassadors Program provide support and information to prospective HACU National Internship Program applicants.

CORPORATE AND NONPROFIT PARTNERS

ACT

American Student Assistance

Deloitte

Federal Reserve Bank - Minneapolis

Ford Motor Company Fund

Adelante U.S. Education Leadership

Cuban American Council

Hispanic Association of Colleges & Universities

League of United Latin American Citizens

U.S. Hispanic Leadership Institute

General Electric

Money Management Institute

Amundi Pioneer

Fiserv

Franklin Templeton Investments

Sodexo

Ford Motor Company

Ford Credit

Ford Purchasing



FEDERAL SPONSORS

Broadcasting Board of Governors

Court Services and Offender Supervision Agency

Federal Deposit Insurance Corporation

Federal Reserve Board

Library of Congress

Congressional Research Service

Human Resources Division

National and International Outreach

National Credit Union Administration

National Science Foundation

U.S. Agency for International Development

U.S. Department of Agriculture

Agricultural Marketing Service

Agricultural Research Service

Animal and Plant Health Inspection Service

Economic Research Service

Faith Based & Neighborhood Partnerships

Food and Nutrition Service

Food Safety and Inspection Service

Foreign Agriculture Services

Forest Service

Grain Inspection, Packers & Stockyards Administration

National Agricultural Statistics Service

National Institute of Food and Agriculture

Natural Resources Conservation Service

Office of Advocacy and Outreach

Office of the Assistant Secretary for Civil Rights

Risk Management Agency

Rural Development

U.S. Department of Commerce

U.S. Census Bureau

U.S. Department of Health and Human Services

National Institutes of Health

Office of Minority Health

Substance Abuse & Mental Health Services Administration

Administration

U.S. Department of Homeland Security

U.S. Department of the Interior

Bureau of Land Management

Office of Surface Mining

U.S. Department of the Treasury

Office of the Comptroller of the Currency

U.S. Mint

U.S. Department of Veterans Affairs

Veterans Administration Central Office

Veterans Benefit Administration

Veterans Health Administration

INVESTING IN COLLEGE STUDENTS

Restoring America as the first in the world in college graduation rates begins with working with students from high school to college to ensure they have the educational and financial resources needed to pursue and complete their higher education goals.

HACU Scholarship Program

HACU partnerships with corporations have made it possible to award deserving students with the Denny's Hungry for Education Scholarship, Big Red ¡Avance! Scholarship, Oracle Scholarship, Kia Motors America, Inc. Scholarship, and Café Bustelo El Café del Futuro Scholarship Essay Contest. As a result, HACU awarded 33 scholarships totaling \$97,500 to students at HACU-member institutions. An additional \$2,500 scholarship was awarded to one student serving as a corporate intern at Sodexo, under the HACU National Corporate Internship Program. Deloitte awarded the Jorge Caballero Student Leadership Award, totaling \$10,000. The Ford Motor Company Fund awarded five \$1,000 academic scholarships. This brought the total of scholarships and leadership awards to \$115,000. These companies continue to make a difference by investing in today's college students to ensure an educated workforce for the future of our country.

HACU STEM Summit

A HACU STEM Summit was hosted to provide workshops to prepare Latino students for corporate internships and jobs in science, technology, engineering, and mathematics (STEM) fields. The Summit offered 47 university students the opportunity to meet with STEM professionals and corporate representatives and was held at California State University, Long Beach on September 27, 2017. The STEM Summit was sponsored by Coca Cola.



HACU Student Track Scholarships

Approximately 168 students received a HACU Student Track Scholarship to attend HACU's Annual Conference. 63 of the students were sponsored by HACU and 105 were made possible through 31st Annual Conference sponsorships. Student Track scholar sponsors are listed on page 17.

Hispanic College Quiz

Nine students from HACU-member institutions participated in the Hispanic College Quiz show, which aired nationally in 82 markets during Hispanic Heritage Month. Institutions represented were: Adelphi University; Coastal Bend College; Colorado State University-Pueblo; Florida Atlantic University; Laredo Community College; Oklahoma Panhandle State University; Pasadena City College; Savannah State University; and South Mountain Community College. Scholarships were awarded by the producers of the show, Central City Productions, and sponsor State Farm. Students received a one-time scholarship ranging from \$250 to \$3,000, according to their placement. The three finalists were also sponsored to attend the Student Track of the Annual Conference where they received check presentations. A total of \$10,000 in scholarships were awarded and the students and their coach received paid travel expenses to Nashville for the taping of the show sponsored by State Farm/Central City Productions.

HACU/U.S. Army University Tour Program

The HACU/U.S. Army University Tour brought Hispanic high school students to two university campuses to experience campus life, the admissions process and financial aid options. For many students, the tours provided their first college campus visit. A University Tour was hosted at New Mexico State University in Las Cruces, NM with 450 students in March 2017 with a second University Tour at the University of Texas at San Antonio in September 2017 for 635 students.

¡Lánzate! Travel Awards

The Dándole Alas a Tu Éxito/Giving Flight to Your Success™ ¡Lánzate! Travel Award Program, sponsored by HACU and Southwest Airlines, was established thirteen years ago for college students living away from home to be able to return to their hometown to visit with families. Southwest Airlines ticket vouchers were awarded to 100 college students.

INCREASING THE UNDERSTANDING OF HISPANIC HIGHER EDUCATION

HACU National Capitol Forum

HACU's 22nd National Capitol Forum on Hispanic Higher Education registered 137 individuals for the event, which took place in Washington, D.C., April 24-25, 2017. The Forum served as an opportunity to advocate for federal legislation and support for Hispanic higher education. Approximately 73 representatives from HACU-member institutions had the opportunity to meet with key members of the House and Senate from during visits to Capitol Hill.

Congressional Sponsor
Educational Testing Services

Media Partners
DiversityInc Media, LLC
HigherEdJobs.com



HACU Act on the Dream Summit

The Summit brought together leaders from national organizations and immigration stakeholders to discuss advocacy strategies and resources for institutions and school districts to better serve DREAMers. The day-long Summit included speakers Senator Dick Durbin, Executive Director and Co-Founder of United We Dream, Cristina Jimenez, Representative Luis V. Gutierrez and several panelists.

Sponsors

Lumina Foundation
American Association of State Colleges and Universities
American Dental Education Association (ADEA)
Association of Jesuit Colleges and Universities

Council for Christian Colleges & Universities
Council of Graduate Schools
NASPA- Student Affairs Administrators in Higher Education
National Association for College Admission Counseling

HACU International Conference

HACU's 12th International Conference "Creating New Paths for International Collaboration," brought a total of 242 registrants and took place on March 29, 2017, at the Real InterContinental in San José Costa Rica.

A Student Track offered workshops for students to learn more about what to expect from study abroad opportunities and included campus tours to Universidad de Iberoamérica; Universidad Latina de Costa Rica; Universidad Latinoamericana de Ciencia y Tecnología (ULACIT); and Universidad Veritas.

Title Sponsor

Universidad de Iberoamerica Costa Rica

Bronze Sponsor

Amazon Costa Rica
The Coca-Cola Company

Gold Sponsor

U.S. Embassy – San José, Costa Rica

In-Kind Contributors

Universidad Latinoamericana De Ciencia Y Tecnología, Costa Rica

Silver Sponsor

Southwest Airlines



HACU'S PREMIER CONFERENCE ON HISPANIC HIGHER EDUCATION



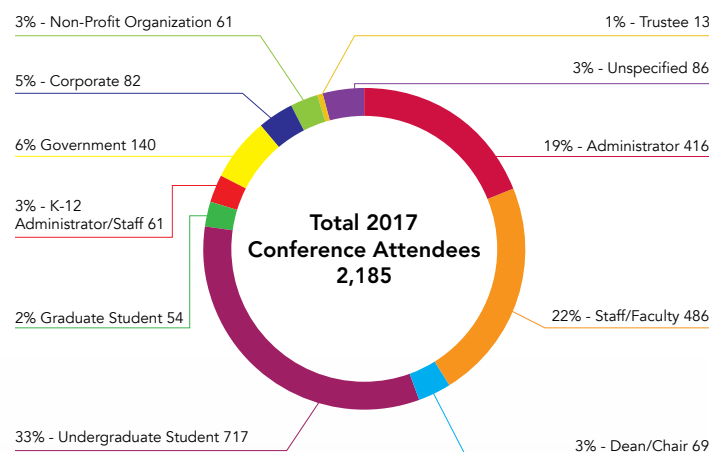
HACU Annual Conference

HACU's 31st Annual Conference, under the theme "Championing Hispanic Higher Education Success: Driving America's Prosperity," brought a total of 2,185 registrants on Oct. 28-30, 2017, to San Diego, California.

Attendees included representatives from colleges and universities, school districts, public policy organizations, and government, corporate and philanthropic sectors. Of those registered, 717 were undergraduate students participating in the Student Track, which takes place in conjunction with the Annual Conference and offers career and leadership development opportunities.

The Annual Conference featured 54 workshops in a wide range of issues related to the conference theme, with many on topics related to Hispanic-Serving Institutions. A HACU Town Hall with celebrity speakers Cheech Marin and Esai Morales joined David Villarino Gonzalez of Field and host Rich Najera to discuss how media and education are changing the narrative and creating opportunities. The International Plenary, "International Education as a Key Driver of Western Hemispheric Prosperity," were among the topics presented during the conference plenaries.

Record Breaking numbers in 2017



Attendees also made connections with 115 exhibitors that included national and international colleges and universities, federal agencies, major corporations and nonprofit agencies. A College and Career Fair was part of the Exhibitors Hall that was free and open to the public. The fair also offered workshops for college-bound students and their families.

Youth Leadership Development Forum

HACU-member institution National University was the host site for HACU's Youth Leadership Development Forum (YLDF) STEM Day on Oct. 27, 2017. The YLDF, under the theme "Students in STEM" brought together 547 local students and 43 chaperones to learn how to prepare for college and about future careers in science, technology, engineering and mathematics (STEM) fields. 94 breakout sessions featuring 98 speakers from the STEM community providing students with multiple hands on, interactive presentations on STEM majors and careers. Partners Playspace, a STEM exhibitor fair with over 20 community partners gave students the opportunity to program robots, build a solar panel and participate in an open mike poetry jam.



HACU PreK-12/ Higher Education Collaboration Symposium

The Pre-K-12 Symposium drew 113 participants to the one-day gathering featuring a panel discussion led by educators that showcased policies and programs with successful outcomes for students leading into college. The event was offered as a pre-conference event of HACU's Annual Conference.



HACU Latino Higher Education Leadership Institute

The annual Latino Higher Education Leadership Institute drew 143 registered participants. The Institute, designed to provide a forum for emerging higher education leaders, included presentations and workshops to discuss challenges and explore strategies for making higher education institutions more responsive to the educational needs of Latinos and other underrepresented groups. The institute was offered as a pre-conference event of HACU's Annual Conference.



HACU Deans' Forum

The Deans' Forum on Hispanic Higher Education, "Exemplary Practices: Developing Effective Hispanic Teacher Pathways," focused on recruiting and retaining Hispanic teachers through institutional support. Registrants in attendance included 122 participants. The event was offered as a post-conference event of HACU's Annual Conference.

HACU Trustees' Forum

The Trustees' Forum focused on collaboration strategies for advocacy efforts at the state and federal level, specifically for trustees who engage in advocacy on behalf of the Hispanic-Serving Institutions they serve. Registrants in attendance included 32 participants. The event was offered as a post-conference event of HACU's Annual Conference.



California HSI Summit

More than 40 higher education representatives participated in a California Hispanic-Serving Institutions (HSIs) Summit convened by HACU to discuss a California higher education funding proposal from HACU recently introduced in the California state legislature, after several years of conversations with California HACU members about ways the Association can best impact funding for HSIs in the state.

31st Annual Conference sponsors and partners

Diamond

U.S. Army

Platinum

The California State University
U.S. Department of Agriculture

Gold

American Student Assistance
Deloitte

Silver

Farmworker Institute for Education & Leadership
Development (FIELD)
Southwest Airlines
University of California- Office of the President
University of California- San Diego

Bronze

The Coca-Cola Company
Ford Motor Company Fund
General Motors
NCAA Inclusion
San Diego Imperial County
Community Colleges Association
Sodexo
TIAA

Media Partners

Diverse: Issues In Higher Education
Diversity in STEAM Magazine
HigherEdJobs.com
Hispanic Network Magazine
INSIGHT Into Diversity
LATINA Style, Inc.

Student Track

California State Polytechnic University, Pomona
California State Polytechnic University,
Pomona- Don B. Huntley College of Agriculture
California State University, Fullerton
California State University, Northridge

Student Track (continued)

Central City Productions
Central Intelligence Agency
Chick-fil-A
Eli Lilly and Company
Federal Deposit Insurance Corporation
Florida Atlantic University
Hudson County Community College
Kellogg's
Massachusetts Institute of Technology
(MIT) – Office of Minority Education
MGM Resorts International
Oracle
Polk State College
Procter & Gamble (P&G)
San Diego State University, Imperial Valley
Smithsonian Institution
Texas A&M International University
U.S. Department of State
University of Central Oklahoma
Yale University

Student Portfolio

Denny's

Students in STEM - Youth Leadership Development Forum

General Motors Foundation

PreK-12/Higher Education Collaboration Symposium

ACT
American Federation of Teachers
Peterson's (A Nelnet Company)

Town Hall

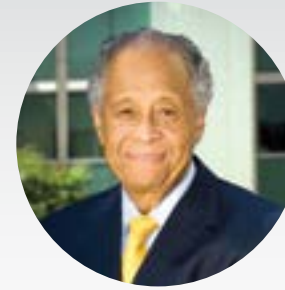
ecoAmerica - Solution Generation
Farmworker Institute for Education & Leadership
Development (FIELD)
Latino Thought Maker

Deans' Forum

The California State University

2017 HACU HONOREES

HACU Hall of Champions



The late Milton A. Gordon, Ph.D.
Former President
California State University, Fullerton

HACU Hall of Champions



Eliseo "Cheo" Torres, Ph.D.
Vice President for Student Affairs
The University of New Mexico

Distinguished Public Service Award



The Honorable Gonzalo P. Curiel
U.S. District Court Southern District of California

Outstanding HACU-Member Institution



New Jersey City University
For excellence in its support of HACU

Exemplary Policy/Advocacy Leadership Award



The Honorable Susan Davis
United States House of Representatives
For outstanding leadership and
advocacy support

President's Award of Excellence



William V. Flores, Ph.D.
Professor of Political Science
Former President
University of Houston Downtown

Outstanding HACU Public Sector Partner



**Substance Abuse and
Mental Health Services
Administration**
In recognition of excellent support
by a governmental organization



Soy Parte de... I'm Part of...

HISPANIC ALLIANCE TO CHAMPION HIGHER EDUCATION

la HACHE de HACU

HISPANIC ASSOCIATION OF COLLEGES AND UNIVERSITIES

HACU wishes to acknowledge the generosity of the following donors who have become part of La HACHE de HACU in the 2017 fiscal year by making a gift to the Association's annual appeal. This list does not include anonymous donors.

Champions Circle
DiversityInc Media, LLC

Leader's Circle
Joseph I. Castro, President - California State University, Fresno
Antonio Flores

President's Circle
Jorge Caballero
Michael Carlock
William V. Flores
John Moder & Terri Boggess
Dr. Monte E. Perez, President - Los Angeles Mission College

Advocate's Circle
Franklyn M. Casale
Andrew Diaz
Sue Henderson
Tomás D. Morales
Amy Reinholds

Benefactor's Circle
Kathryn E Barrera
Imelda Bosquez
Beatriz Espinoza
Maria Harper-Marinick
Nick & Sandy Holt
Fernando León García
Maldonado Family
Joel Moz
Andrew Sund
Gloria V Webber

Partner's Circle
Ruben Michael Flores
Michael Jadoo
Eduardo Martinez
Jose Medrano
Lucy Perez
Felix Matos Rodriguez

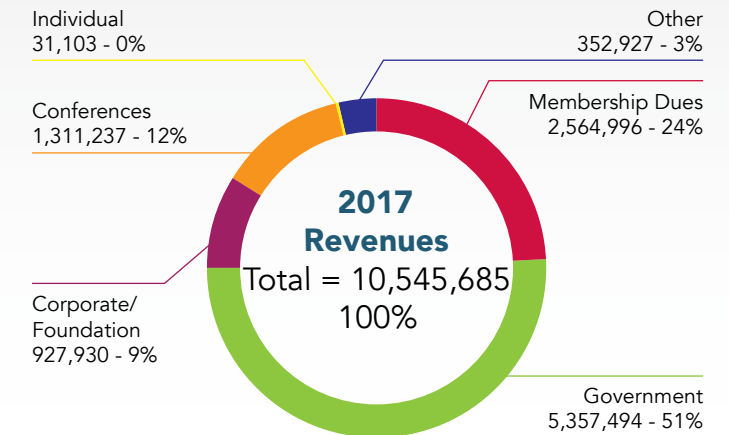
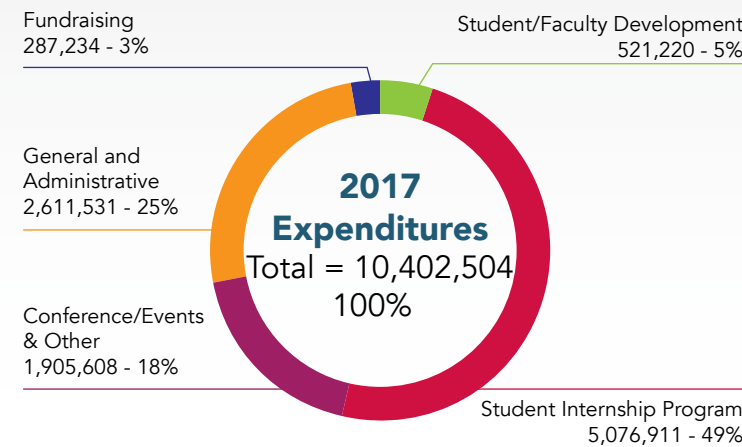
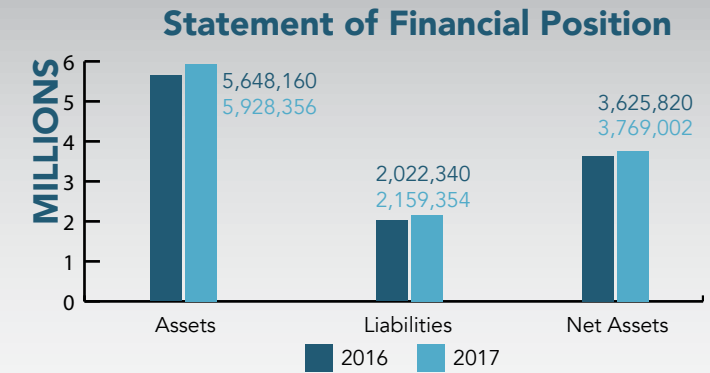
Patron's Circle
Eduardo Barraza
Maria De Lourdes Bird
Gaston Cantu
Albert Cruz & Shalindar Adorno
Lisa Martinez
NJ Revilla-García
Eva Rodriguez

Friend of HACU
Veronica Aguilar
Stano Casole
Mary Beth Gonzales
Henrietta Hurtado
Maria Lara
Steven Mark Mansbach
Darlene Martin
Richard Montez
Victor Olivares
Vanessa Rodriguez
Olivia Vasquez

Combined Federal Campaign
Ralph Martinez
Josue Perez Gutierrez
Samantha Pena
Iris Gonzalez
Flores Vazquez
Angelica Cornejo
Alex Quezada
Sidia Nelson
Pedro Garcia
Fundador Caraballo
Victor Franqui
Roger Mireles
John David Perez
Joselyn M Penson-Pena
Alberto Ramon
Carolina Klink
John Backus
Maria Olmedo-Malagon
Ruth Hurtadoday
Monica Madrid
Cristina Nochetto
Javier Lopez
Ana Kuchilla
Danielle Gonzales-Magrath
Sylvia Spengler
Raymond J Nassar
Martin Casas
Francisco Tomeitorres
Julio Dicient Tail Pierre
John Rollins
Alfredo Medina

FINANCIALS

The following information was extracted from HACU's 2017 financial audit by the accounting firm of Akin, Doherty, Klein & Feuge, P.C. For a complete copy of HACU's 2017 audited Financial Statements, contact Magda Gonzalez at mgonzalez@hacu.net or (210) 692-3805.



HISPANIC ASSOCIATION OF COLLEGES AND UNIVERSITIES INCOME STATEMENT

	Student/Faculty Develop./Scholar.	Student Internship Prog	Conf/Events & Other	Total	General & Admin	Fundraising	Total
Revenues							
Dues					2,564,996		2,564,996
Federal Contract Revenue	193,902	5,000,091	163,500	5,357,494			5,357,494
Corporate/Foundations	249,325	89,950	565,243	904,518		23,412	927,930
Conference Fees			1,311,237	1,311,237			1,311,237
Investment Revenue					187,290		187,290
Individuals						31,103	31,103
Other	350		87,201	87,551	78,086		165,637
Total Revenues	443,577	5,090,041	2,127,180	7,660,799	2,830,372	54,515	10,545,685
Expenditures							
Staff/Intern Compensation	151,663	3,548,889	194,346	3,894,897	2,336,088	235,053	6,466,039
Conference Expense/Travel	198,137	215,163	1,600,343	2,013,643	147,535	21,933	2,183,111
Consultants/Professional Services	17,820	93,280	18,609	129,709	171,982	3,432	305,124
Insurance					30,902		30,902
Advertising/Publications	38	7,485	61,955	69,478	55,731	9,237	134,446
Leases and Rentals		172,411	7,254	179,665	373,569		553,234
Scholarships/Stipends	115,000			115,000			115,000
Telephone, Supplies, Equipment and Repairs	4,970	37,044	4,875	46,889	110,520	13,029	170,438
Interest/Bank Fees	35	28,297	35	28,367	65,089	93	93,549
Other Line Items	48	196,643	17,248	213,939	132,266	4,456	350,661
Indirect Cost Recovery	33,508	777,699	944	812,151	(812,151)		
Total Expenditures	521,220	5,076,911	1,905,608	7,503,739	2,611,531	287,234	10,402,504

2018-19 CALENDAR OF EVENTS

HACU Annual Conference

#HACU18

October 6-8, 2018

32nd Annual Conference

Championing Hispanic Higher Education Success:
Building America's Future

Atlanta Marriott Marquis • Atlanta, GA

October 6, 2018 | Pre-conference events

HACU 17th Annual Latino Higher Education Leadership Institute

HACU Fourth PreK-12/Higher Education Collaboration Symposium

October 9, 2018 | Post-conference event

HACU Seventh Annual Deans' Forum on Hispanic Higher Education



HACU National Capitol Forum

#HACU19

April 1-2, 2019

HACU 24th Annual National Capitol Forum
on Hispanic Higher Education

Washington Marriott at Metro Center
Washington, D.C.

HACU International Conference

#HACU19

May 1-3, 2019

HACU 13th International Conference

Sheraton Puerto Rico Hotel & Casino
San Juan, Puerto Rico

Register online at www.hacu.net

Stay Connected with @HACUNews



HACU MEMBERS

Hispanic-Serving Institutions (HSI)

A nonprofit, accredited college, university or system in the U.S. or Puerto Rico, where total Hispanic enrollment constitutes a minimum of 25 percent of the total enrollment at the undergraduate or graduate level.

Associate Member Institution (AMI)

A nonprofit, accredited college, university or system in the U.S. or Puerto Rico, where total Hispanic enrollment constitutes at least 10 percent of the total student enrollment, or where a minimum of 1,000 Hispanic students are enrolled at the undergraduate or graduate level.

Partner Institution (Partner)

A nonprofit, accredited college, university, or system in the U.S. or Puerto Rico, where total Hispanic enrollment constitutes less than 10 percent of the total enrollment.

International Institution

An institution of higher education abroad that documents that it is a legally constituted entity authorized to operate in its country according to the rules and regulations required by its government.

Hispanic-Serving School District (HSSD) Affiliate

A school district where total Hispanic enrollment constitutes a minimum of 25 percent of the total district enrollment.

Educational Affiliate

A nonprofit organization, association or council that is in support of HACU's mission. In order to qualify for affiliation under the Educational Affiliate category, an organization must be a 501(c) (3) nonprofit as determined by the Internal Revenue Service and not an institution of higher education or school district eligible for membership in any of the above-mentioned institutional member categories.

Faculty and Staff Affiliate

An individual faculty or staff from HACU-member institutions as well as non-member nonprofit colleges and universities.

Trustee Affiliate

An individual board or trustee member from HACU-member institution as well as non-member nonprofit colleges and universities.

Student Affiliate

An individual student currently enrolled at a nonprofit college or university.

Student Organization Affiliate

A student organization at nonprofit colleges or universities.

HACU National Institutions

Arizona (17)

- Arizona State University (AMI)
- Central Arizona College (HSI)
- Chandler-Gilbert Community College (AMI)
- Cochise College (HSI)
- Estrella Mountain Community College (HSI)
- GateWay Community College (HSI)
- Glendale Community College (HSI)
- Maricopa County Community Colleges (HSI System/District)
- Mesa Community College (HSI)
- Midwestern University (Partner)
- Mohave Community College (AMI)
- Northern Arizona University (AMI)
- Northern Arizona University - Yuma Branch Campus (HSI)
- Phoenix College (HSI)
- Pima Community College HSI System/District)
- South Mountain Community College (HSI)
- The University of Arizona South (HSI)

Arkansas (1)

- Cossatot Community College of the University of Arkansas (HSI)

California (119)

- Allan Hancock College (HSI)
- Antelope Valley College (HSI)
- Antioch University, Santa Barbara (HSI)
- Azusa Pacific University (HSI)
- Bakersfield College (HSI)
- California Lutheran University (HSI)
- California Polytechnic State University, San Luis Obispo (AMI)
- California State Polytechnic University, Pomona (HSI)
- California State Polytechnic University, Office (HSI System/District)
- California State University, Bakersfield (HSI)
- California State University, Channel Islands (HSI)
- California State University, Chico (HSI)
- California State University, Dominguez Hills (HSI)
- California State University, East Bay (HSI)
- California State University, Fresno (HSI)

- California State University, Fullerton (HSI)
- California State University, Long Beach (HSI)
- California State University, Los Angeles (HSI)
- California State University, Monterey Bay (HSI)
- California State University, Northridge (HSI)
- California State University, Sacramento (HSI)
- California State University, San Bernardino (HSI)
- California State University, San Marcos (HSI)
- California State University, Stanislaus (HSI)
- Cerritos College (HSI)
- Cerro Coso Community College (HSI)
- Chaffey College (HSI)
- Chapman University (AMI)
- Charles R. Drew University of Medicine and Science (HSI)
- Citrus College (HSI)
- Coast Community College District (HSI System/District)

HACU National Institutions

College of the Desert (HSI)
 Crafton Hills College (HSI)
 Cuesta College (HSI)
 Cuyamaca College (HSI)
 East Los Angeles College (HSI)
 El Camino College (HSI)
 Fresno Pacific University (HSI)
 Fullerton College (HSI)
 Gavilan College (HSI)
 Golden West College (HSI)
 Grossmont College (HSI)
 Grossmont-Cuyamaca Community College District (HSI System/District)
 Hartnell College (HSI)
 Humboldt State University (HSI)
 Imperial Valley College (HSI)
 John F. Kennedy University (AMI)
 Keck Graduate Institute (Partner)
 Kern Community College District (HSI System/District)
 La Sierra University (HSI)
 Las Positas College (HSI)
 Life Pacific College (HSI)
 Long Beach City College (HSI)
 Los Angeles City College (HSI)
 Los Angeles Harbor College (HSI)
 Los Angeles Mission College (HSI)
 Los Angeles Pierce College (HSI)
 Los Angeles Trade-Technical College (HSI)
 Los Angeles Valley College (HSI)
 Loyola Marymount University (HSI)
 Mendocino College (HSI)
 Mills College (HSI)
 MiraCosta Community College District (HSI)
 Mission College (HSI)
 Modesto Junior College (HSI)
 Moreno Valley College (HSI)
 Mount Saint Mary's University (HSI)
 Mt. San Antonio College (HSI)
 Mt. San Jacinto College (HSI)
 Napa Valley College (HSI)
 National University (HSI)
 Norco College (HSI)
 Notre Dame de Namur University (HSI)
 Occidental College (AMI)
 Oxnard College (HSI)
 Palomar College (HSI)
 Pasadena City College (HSI)
 Porterville College (HSI)
 Reedley College (HSI)
 Riverside City College (HSI)
 Riverside Community College District (HSI System/District)
 Saint Mary's College of California (HSI)
 San Bernardino Community College District (HSI System/District)
 San Bernardino Valley College (HSI)
 San Diego Community College District (HSI System/District)

San Diego State University (HSI)
 San Diego State University, Imperial Valley Campus (HSI)
 San Francisco State University (HSI)
 San Joaquin Delta College (HSI)
 San Jose City College (HSI)
 San Jose State University (HSI)
 Santa Ana College (HSI)
 Santa Clara University (AMI)
 Santa Monica College (HSI)
 Sonoma State University (HSI)
 Southwestern College (HSI)
 Southwestern Law School (AMI)
 Taft College (HSI)
 The Chicago School of Professional Psychology (AMI)
 University of California, Davis (AMI)
 University of California, Irvine (HSI)
 University of California, Los Angeles (AMI)
 University of California, Merced (HSI)
 University of California, Riverside (HSI)
 University of California, San Diego (AMI)
 University of California, San Francisco (AMI)
 University of California, Santa Barbara (HSI)
 University of California, Santa Cruz (HSI)
 University of La Verne (HSI)
 University of San Diego (AMI)
 University of the Pacific (AMI)
 Vanguard University (HSI)
 Ventura College (HSI)
 West Hills College Coalinga (HSI)
 West Hills College Lemoore (HSI)
 West Hills Community College District (HSI System/District)
 West Los Angeles College (HSI)
 Whittier College (HSI)
 Woodland Community College (HSI)

Colorado (13)

Adams State University (HSI)
 Aims Community College (HSI)
 Colorado College (Partner)
 Colorado State University–Pueblo (HSI)
 Community College of Aurora (HSI)
 Community College of Denver (HSI)
 Emily Griffith Technical College (HSI)
 Metropolitan State University of Denver (AMI)
 Morgan Community College (AMI)
 Pueblo Community College (HSI)
 The University of Northern Colorado (AMI)
 Trinidad State Junior College (HSI)
 University of Colorado Denver | Anschutz Medical Campus (AMI)

Connecticut (5)

Capital Community College (HSI)
 Central Connecticut State University (AMI)
 Naugatuck Valley Community College (HSI)
 Southern Connecticut State University (AMI)
 Western Connecticut State University (Partner)

Delaware (1)

University of Delaware (AMI)

District of Columbia (3)

American University (AMI)
 Gallaudet University (AMI)
 University of the District of Columbia Community College (Partner)

Florida (17)

Barry University (HSI)
 Broward College (HSI)
 Florida Atlantic University (HSI)
 Florida Gulf Coast University (AMI)
 Florida International University (HSI)
 Hillsborough Community College (HSI)
 Hodges University (HSI)
 Lynn University (AMI)
 Miami Dade College (HSI)
 New College of Florida (AMI)
 Nova Southeastern University (HSI)
 Palm Beach State College (HSI)
 South Florida State College (HSI)
 Southeastern University (AMI)
 St. Thomas University (HSI)
 University of Central Florida (HSI)
 Valencia College (HSI System/District)

Georgia (4)

Dalton State College (AMI)
 Emory University, James T. Laney School of Graduate Studies (Partner)
 Georgia Gwinnett College (AMI)
 Savannah State University (Partner)

Idaho (2)

Boise State University (AMI)
 College of Western Idaho (AMI)

Illinois (17)

DePaul University (AMI)
 Harry S Truman College, City Colleges of Chicago (HSI)
 Joliet Junior College (HSI)
 Lewis University (AMI)
 Monmouth College (AMI)
 Moraine Valley Community College (AMI)
 Morton College (HSI)
 National Louis University (HSI)
 Northeastern Illinois University (HSI)
 Northwestern University (AMI)
 Richard J. Daley College, City Colleges of Chicago (HSI)
 Saint Xavier University (HSI)
 St. Augustine College (HSI)
 University of Illinois at Chicago (HSI)
 University of St. Francis (AMI)
 Waubesa Community College (HSI)
 Wilbur Wright College, City Colleges of Chicago (HSI)

Indiana (3)

Ball State University (Partner)
 Goshen College (AMI)
 Purdue University (AMI)

Kansas (5)

Dodge City Community College (HSI)
 Donnelly College (HSI)
 Fort Hays State University (AMI)
 Newman University (AMI)
 The University of Kansas (AMI)

Louisiana (1)

Southern University Law Center (Partner)

Maryland (3)

Montgomery College (AMI)
 Salisbury University (Partner)
 University of Maryland, Baltimore County (Partner)

Massachusetts (12)

Bunker Hill Community College (AMI)
 Fisher College (Partner)
 Framingham State University (AMI)
 Holyoke Community College (HSI)
 Massachusetts Institute of Technology (AMI)
 Mount Holyoke College (Partner)
 Northern Essex Community College (HSI)
 Regis College (AMI)
 Salem State University (AMI)
 Springfield Technical Community College (HSI)
 Wellesley College (AMI)
 Worcester State University (AMI)

Michigan (5)

Ferris State University (Partner)
 Hope College (Partner)
 Michigan State University (AMI)
 University of Michigan, Ann Arbor (AMI)
 Western Michigan University (AMI)

Missouri (6)

Maryville University (Partner)
 Missouri State University (Partner)
 Saint Luke's College of Health Sciences (Partner)
 Southeast Missouri State University (Partner)
 University of Missouri, Kansas City (Partner)
 Washington University in St. Louis (Partner)

Montana (1)

Montana State University (Partner)

Nebraska (4)

Central Community College – Columbus Campus (AMI)
 Central Community College – Grand Island Campus (AMI)
 Central Community College – Hastings Campus (AMI)
 University of Nebraska at Kearney (AMI)

HACU National Institutions

Nevada (4)

College of Southern Nevada (HSI)
Nevada State College (HSI)
Truckee Meadows Community College (HSI)
Western Nevada College (AMI)

New Hampshire (1)

Southern New Hampshire University (AMI)

New Jersey (11)

Bergen Community College (HSI)
Bloomfield College (HSI)
Fairleigh Dickinson University (HSI)
Felician University (HSI)
Hudson County Community College (HSI)
Middlesex County College (HSI)
New Jersey City University (HSI)
Rutgers the State University of New Jersey, Newark Campus (HSI)
Saint Peter's University (HSI)
Union County College (HSI)
William Paterson University (HSI)

New Mexico (16)

Central New Mexico Community College (HSI)
Clovis Community College (HSI)
Eastern New Mexico University (HSI)
Eastern New Mexico University – Roswell (HSI)
New Mexico Highlands University (HSI)
New Mexico Institute of Mining and Technology (HSI)
New Mexico Military Institute (AMI)
New Mexico State University (HSI)
New Mexico State University, Alamogordo (HSI)
New Mexico State University, Carlsbad (HSI)
New Mexico State University, Grants (HSI)
Northern New Mexico College (HSI)
The University of New Mexico (HSI)
The University of New Mexico – Valencia Campus (HSI)
University of the Southwest (HSI)
Western New Mexico University (HSI)

New York (21)

Adelphi University (AMI)
Borica College (HSI)
Borough of Manhattan Community College, CUNY (HSI)
Bronx Community College, CUNY (HSI)
College of Mount Saint Vincent (HSI)
College of Staten Island, CUNY (AMI)
Cornell University (AMI)
Dominican College (HSI)
Eugenio Maria de Hostos Community College, CUNY (HSI)
John Jay College of Criminal Justice, CUNY (HSI)
Kingsborough Community College, CUNY (AMI)
Lehman College, CUNY (HSI)
Manhattan College (AMI)
Mercy College (HSI)
New York City College of Technology, CUNY (HSI)

Queens College, CUNY (HSI)
Relay Graduate School of Education (AMI)
Stella and Charles Guttman Community College, CUNY (HSI)
The Graduate Center, CUNY (AMI)
Vaughn College of Aeronautics and Technology (HSI)
York College, CUNY (AMI)

North Carolina (3)

Duke University (Partner)
Meredith College (Partner)
The University of North Carolina at Charlotte (AMI)

Ohio (5)

Case Western Reserve University (Partner)
Franciscan University of Steubenville (AMI)
Northeast Ohio Medical University (Partner)
The University of Toledo (Partner)
Wright State University (Partner)

Oklahoma (2)

Oklahoma Panhandle State University (HSI)
University of Central Oklahoma (AMI)

Oregon (4)

Columbia Gorge Community College (HSI)
George Fox University (AMI)
Oregon State University (AMI)
Western Oregon University (AMI)

Pennsylvania (10)

Bucknell University (Partner)
Cabrini University (AMI)
Delaware Valley University (Partner)
Esperanza College of Eastern University (HSI)
Gettysburg College (Partner)
H. John Heinz III College Carnegie Mellon University (Partner)
Lake Erie College of Osteopathic Medicine (LECOM) (Partner)
The Philadelphia College of Osteopathic Medicine (Partner)
The University of Scranton (Partner)
University of Pennsylvania (AMI)

Puerto Rico (22)

American University of Puerto Rico, Bayamon (HSI)
Atenas College (HSI)
Atlantic University College (HSI)
Colegio Universitario de San Juan (HSI)
EDP University of Puerto Rico – Hato Rey (HSI)
EDP University of Puerto Rico – San Sebastian (HSI)
Inter American University of Puerto Rico, Arecibo (HSI)
Inter American University of Puerto Rico, Metro Campus (HSI)
Inter American University of Puerto Rico, San German (HSI)
Inter American University of Puerto Rico, System Central Office (HSI System/District)
Polytechnic University of Puerto Rico (HSI)
Pontificia Universidad Catolica de Puerto Rico (HSI)
San Juan Bautista School of Medicine (HSI)
Sistema Universitario Ana G. Méndez (HSI System/District)
Universidad Adventista de las Antillas (HSI)

Universidad Carlos Albizu (HSI)
Universidad Central del Caribe (HSI)
Universidad del Este, Carolina (HSI)
Universidad del Sagrado Corazon (HSI)
Universidad del Turabo (HSI)
Universidad Metropolitana (HSI)
University of Puerto Rico, Mayaguez (HSI)

Rhode Island (1)

Rhode Island College (AMI)

Tennessee (3)

Lipscomb University (Partner)
Southern Adventist University (AMI)
Vanderbilt University (Partner)

Texas (60)

Alamo Colleges (HSI System/District)
Austin Community College District (HSI)
Baylor University (AMI)
Coastal Bend College (HSI)
College of the Mainland (HSI)
Dallas County Community College District (HSI System/District)
El Centro College (HSI)
El Paso Community College (HSI)
Galveston College (HSI)
Hallmark University (HSI)
Houston Baptist University (HSI)
Houston Community College System (HSI System/District)
Laredo Community College (HSI)
Lone Star College System (HSI System/District)
Midland College (HSI)
Midwestern State University (AMI)
Mountain View College (HSI)
Northwest Vista College (HSI)
Our Lady of the Lake University (HSI)
Palo Alto College (HSI)
Paul Quinn College (AMI)
Rice University (AMI)
Sam Houston State University (AMI)
San Antonio College (HSI)
San Jacinto College (HSI)
Schreiner University (HSI)
South Texas College (HSI)
Southwest Texas Junior College (HSI)
Southwestern Adventist University (HSI)
St. Edward's University (HSI)
St. Mary's University (HSI)
St. Philip's College (HSI)
Sul Ross State University (HSI)
Tarleton State University (AMI)
Tarrant County College District (HSI System/District)
Texas A&M International University (HSI)
Texas A&M University (AMI)
Texas A&M University-Corpus Christi (HSI)
Texas A&M University-Kingsville (HSI)
Texas A&M University-San Antonio (HSI)

Texas Christian University (AMI)
Texas State University (HSI)
Texas Tech University (AMI)
Texas Wesleyan University (AMI)
Texas Woman's University (HSI)
The University of Texas at Arlington (HSI)
The University of Texas at El Paso (HSI)
The University of Texas at San Antonio (HSI)
The University of Texas Health Science Center at San Antonio (HSI)
The University of Texas Rio Grande Valley (HSI)
Trinity University (AMI)
University of Houston (HSI)
University of Houston-Clear Lake (HSI)
University of Houston-Downtown (HSI)
University of Houston-Victoria (HSI)
University of North Texas at Dallas (HSI)
University of the Incarnate Word (HSI)
Victoria College (HSI)
West Texas A&M University (HSI)
Western Texas College (HSI)

Utah (1)

Weber State University (AMI)

Vermont (1)

School for International Training (SIT) (AMI)

Virginia (2)

Virginia Commonwealth University (AMI)
Washington and Lee University (AMI)

Washington (6)

Columbia Basin College (HSI)
Eastern Washington University (AMI)
Heritage University (HSI)
Washington State University (AMI)
Washington State University Tri-Cities (HSI)
Whitman College (Partner)

West Virginia (1)

West Virginia University (AMI)

Wisconsin (3)

Alverno College (HSI)
Marquette University (AMI)
University of Wisconsin-Parkside (AMI)

HACU International Institutions

Antigua & Barbuda (1)

University of Health Sciences Antigua

Colombia (1)

Universidad INCCA de Colombia

Costa Rica (6)

AUPRICA (Asociación de Universidades Privadas de Centroamérica)

CATIE-Tropical Agriculture Research & Higher Education Center

Universidad de Iberoamérica

Universidad Latinoamericana de Ciencia y Tecnología (ULACIT)

Universidad Santa Paula

Universidad Veritas

Universidad Católica de El Salvador

Universidad Tecnológica de El Salvador

Universidad Católica de El Salvador

Ecuador (1)

Universidad Técnica Particular de Loja,

San Cayetano Alto

El Salvador (3)

Escuela Especializada en Ingeniería ITCA-FEPADE

Escuela Especializada en Ingeniería ITCA-FEPADE

Universidad Católica de El Salvador

Universidad Tecnológica de El Salvador

Mexico (16)

Centro de Estudios Universitarios

CETYS Universidad Baja California

Escuela de Ciencias de la Educación

Instituto de Ciencias y Estudios Superiores de Tamaulipas

Instituto de Estudios Superiores de Chiapas

Instituto Nacional de Salud Pública

Universidad Autónoma de Chiapas

Universidad Autónoma de Guadalajara

Universidad Autónoma de Nuevo León

Universidad Autónoma de Tamaulipas

Universidad Autónoma del Estado de Hidalgo

Universidad Autónoma del Estado de México

Universidad Autónoma del Estado de México

Universidad Autónoma del Estado de México

Universidad Autónoma del Estado de México

Universidad Autónoma del Estado de México

Universidad Autónoma del Estado de México

Universidad Autónoma del Estado de México

Universidad Autónoma del Estado de México

Universidad Autónoma del Estado de México

Universidad Autónoma del Estado de México

Universidad Autónoma del Estado de México

Universidad Autónoma del Estado de México

Universidad Autónoma del Estado de México

Universidad Autónoma del Estado de México

Nicaragua (1)

Universidad Nacional de Ingeniería (UNI)

Spain (7)

Embassy of Spain-Trade Commission Miami

(Based in the U.S.)

European College - EC Business School, SA

Universidad de Alcalá

Universidad de Las Palmas de Gran Canaria

Universidad Europea Miguel de Cervantes

Universidad Internacional de La Rioja (UNIR)

Universidad Internacional de La Rioja (UNIR)

Universidad Rey Juan Carlos

Universidad Rey Juan Carlos

Universidad Rey Juan Carlos

Universidad Rey Juan Carlos

Universidad Rey Juan Carlos

Universidad Rey Juan Carlos

Universidad Rey Juan Carlos

Universidad Rey Juan Carlos

Universidad Rey Juan Carlos

Universidad Rey Juan Carlos

Universidad Rey Juan Carlos

Universidad Rey Juan Carlos

Universidad Rey Juan Carlos

Universidad Rey Juan Carlos

Universidad Rey Juan Carlos

Universidad Rey Juan Carlos

Universidad Rey Juan Carlos

Universidad Rey Juan Carlos

Universidad Rey Juan Carlos

Universidad Rey Juan Carlos

Universidad Rey Juan Carlos

Universidad Rey Juan Carlos

Universidad Rey Juan Carlos

Universidad Rey Juan Carlos

Universidad Rey Juan Carlos

Universidad Rey Juan Carlos

Universidad Rey Juan Carlos

Universidad Rey Juan Carlos

Universidad Rey Juan Carlos

Universidad Rey Juan Carlos

Universidad Rey Juan Carlos

Universidad Rey Juan Carlos

Universidad Rey Juan Carlos

Universidad Rey Juan Carlos

Universidad Rey Juan Carlos

Universidad Rey Juan Carlos

Universidad Rey Juan Carlos

Universidad Rey Juan Carlos

Universidad Rey Juan Carlos

Universidad Rey Juan Carlos

Universidad Rey Juan Carlos

Universidad Rey Juan Carlos

Universidad Rey Juan Carlos

Universidad Rey Juan Carlos

Universidad Rey Juan Carlos

Universidad Rey Juan Carlos

Universidad Rey Juan Carlos

Universidad Rey Juan Carlos

Universidad Rey Juan Carlos

Universidad Rey Juan Carlos

Universidad Rey Juan Carlos

Universidad Rey Juan Carlos

Universidad Rey Juan Carlos

Universidad Rey Juan Carlos

Universidad Rey Juan Carlos

Faculty and Staff Affiliates

Florida (1)

Florida Gulf Coast University

Ms. Ysatis M. Piñero

Coordinator, Undergraduate Relations

Undergraduate Admissions

Illinois (2)

Concordia University Chicago

Mr. Jerry Pinotti

Director

Career Services

University of Illinois, Urbana-Champaign

Dr. Gioconda Guerra Perez

Director

Office of Inclusion and Intercultural Relations

Indiana (2)

Indiana State University

Dr. Elonda V. Ervin

University Diversity Officer

Office of Diversity

Indiana State University

Ms. Theresa Ortega

Staff Caucus Member

Iowa (2)

Des Moines Public Schools

Dr. Anne Sullivan

HR Chief Officer

Human Resources

Grand View University

Mr. Rob Barron

Special Assistant to the President for

Government and Community Relations

Michigan (1)

Western Michigan University

Ms. Diana E. Hernández

Director

Division of Multicultural Affairs

Minnesota (1)

University of Minnesota

Ms. Patricia Izek

Diversity & Inclusion Recruiter

Office of Human Resources

Missouri (1)

Missouri State University

Mr. Juan Meraz

Assistant Vice President

Division for Diversity & Inclusion

New Jersey (2)

Kean University

Dr. Jonathan Parker

Assistant Director, Research Development

Office of Research & Sponsored

Programs

Rowan University

Dr. Lesley Mateo

Assistant Director/EOF Counselor

EOF Camden

New Mexico (7)

New Mexico Institute of

Mining and Technology

Mr. Carlos Rey Romero

Associate Vice President for Research &

Economic Development

New Mexico State University

Dr. Efrén Delgado

Assistant Professor

Food Science and Technology

New Mexico State University

Dr. Anthony S. Marin

Assistant Vice-President, Student Affairs

Student Affairs and Enrollment

Engagement

Northern New Mexico College

Dr. Ivan Lopez Hurtado

Dean & Associate Professor

College of Engineering & Technology

Northern New Mexico College

Ms. LeAnne Montoya Salazar

Title III: STEM Director

Advancement

Northern New Mexico College

Dr. David Torres

Chair

Math & Physical Science

The University of New Mexico

Ms. Nasha Torrez

Dean of Students

UNM Dean of Students Office

New York (4)

Borough of Manhattan Community

College, CUNY

Dr. Daniel Torres

Assistant Professor

Science

Mohawk Valley Community College

Dr. Marianne Buttenschon

Dean

Institute of Emergency Preparedness

Nassau Community College

Dr. Miguel C. Alonso

Department Chair

History

Westchester Community College, SUNY

Dr. Carmen L. Martínez-López

Dean

School of Business and Professional

Careers

Texas (5)

Lone Star College System

Ms. Shannon Hausinger

Director

Student Learning Resource Center

Texas State University

Dr. Lisa Garza

Director

University Planning and Assessment

University of the Incarnate Word

Dr. Sonia L. Jasso

Director

University Advising Center

University of the Incarnate Word

Mr. Armando Saliba

Associate Director

Foundation, Corporate & Government

Relations

Wharton County Junior College – Sugar

Land Campus

Mr. Ernest Ramirez

Instructor

Government

Virginia (1)

Hampton University

Ms. Victoria Cartagena

Director of Hispanic/Latino Initiative

University College

Wisconsin (1)

Northeast Wisconsin Technical College

Dr. Colleen Simpson

Vice President of Student Services

Student Services

Faculty and Staff Affiliates

Alabama (2)

Troy University

Dr. Earl Ingram

Senior Vice Chancellor

Academic Affairs

Troy University

Mr. Buddy Starling

Associate Vice Chancellor

Enrollment Management

Arizona (4)

Pima Community College

Mr. Christopher M. Rodriguez

Program Advisor

Social Sciences

South Mountain Community College

Dr. Janet Ortega

Vice President

Administrative Services

The University of Arizona

Dr. Marla A. Franco

Director

Student Affairs Assessment & Research

The University of Arizona

Dr. Rudy M. Molina, Jr.

Director

Strategic Alternative Learning Techniques

Center

California (9)

California State University, Chico

Ms. Bertha Alicia Curiel

Educational Partnership Coordinator

Chico Student Success Center

California State University, Fullerton

Dr. Silas H. Abrego

Emeritus Vice President

Student Affairs

Mt. San Jacinto College

Dr

Student Affiliates

California (5)
California State University, Fullerton
Janet Bernabe
M.A. American Studies
(Graduate Level)

California State University, Long Beach
Rosa Heckenberg
Ed.D. Leadership
(Graduate Level)

California State University, Los Angeles
Ansis G. Salas
Accounting
(Undergraduate Level)

University of California, Irvine
Mary Latif
Computer Science
(Undergraduate Level)

University of Southern California
Adrian Donato
Ed.D. Global Executive
(Graduate Level)

Colorado (1)
University of Colorado at Boulder
Vanessa Lopez
Masters, Education Policy
(Graduate Level)

Florida (1)
Miami Dade College
Manuel Lorenzo
Finance
(Undergraduate Level)

Maryland (2)
Frederick Community College
William Christopher Varas
Cyber Defense
(Undergraduate Level)

University of Maryland, College Park
Juliana Funkhouser
Government & Politics
(Undergraduate Level)

Massachusetts (1)
Northeastern University
Marita Esposito
Ed.D. Program
(Graduate Level)

New Jersey (1)
New Jersey City University
Priscilla Arevalo
Sociology/Anthropology
(Undergraduate Level)

New Mexico (3)
New Mexico Highlands University
Brenda Ivette Mendez de Andrade
Marketing
(Graduate Level)
New Mexico State University
Maria Cuellar
Food Science and Technology
(Graduate Level)

The University of New Mexico
Nicholas "Nick" Gallegos
Information Systems & Assurance
(Graduate Level)

New York (1)
College of Staten Island, CUNY
Douglas Encarnacion
Business Management
(Undergraduate Level)

Puerto Rico (2)
Inter American University of Puerto Rico, San German
Reynaldo Vazquezteell Rubio
Applied Mathematica
(Graduate Level)

University of Puerto Rico, Aguadilla
Myrna N. Girald Perez
Environmental Technology
(Undergraduate Level)

South Carolina (1)
Furman University
Kelsey Milian
Sociology
(Undergraduate Level)

Texas (11)
Our Lady of the Lake University
Jessica Kirksey
Psychology
(Undergraduate Level)

Sam Houston State University
Jared D. Jones
Kinesiology
(Undergraduate Level)

San Antonio College
Lilianna Avila
Liberal Arts
(Undergraduate Level)

San Antonio College
Monica Edman
Mexican American Studies
(Undergraduate Level)

St. Mary's University
Sergio Porras, Jr.
International Relations
(Undergraduate Level)

Texas A&M International University
Leopoldo F. Rodriguez, Jr.
Management
(Graduate Level)

Texas A&M University-Corpus Christi
Chloe Torres
Political Science
(Undergraduate Level)

Texas A&M University-San Antonio
Anette Evon Infante
Mathematics
(Undergraduate Level)

The University of Texas at Arlington
Veronica Navarrete
MSN-FND
(Graduate Level)

The University of Texas at San Antonio
Jared Edman
Multidisciplinary Studies
(Undergraduate Level)

University of Houston-Downtown
Ana Maria Robledo
Business Insurance and Risk Management
(Undergraduate Level)

HACU Hispanic-Serving School District (HSSD)

Arizona (2)
Mesa Public Schools
Tucson Unified School District

California (11)
Colton Joint Unified School District
Denair Unified School District
Ezequiel Tafoya Alvarado Academy
Lennox School District
Moreno Valley Unified School District
Rialto Unified School District
San Bernardino City Unified School District
San Bernardino County Superintendent of Schools
Victor Elementary School District
Victor Valley Union High School District
Woodland Joint Unified School District

Illinois (1)
Township High School District 214

Nevada (1)
Clark County School District

New Jersey (3)
Elizabeth Public Schools
Passaic County Technical Institute
Passaic Public Schools

New York (3)
Roosevelt Union Free School District
Westbury Union Free School District
Yonkers Public Schools

Pennsylvania (2)
Community Academy of Philadelphia Charter School
The ASPIRA Schools of Pennsylvania

Texas (6)
Bastrop Independent School District
Fort Bend Independent School District
Galena Park Independent School District
Legacy 21
Northside Independent School District
Tyler Independent School District

Wisconsin (1)
Racine Unified School District

Trustee Affiliates

Arizona (1)
Pima Community College
Mr. Luis Gonzales
Board Member

California (7)
Allan Hancock College
Ms. Hilda Zacarias
Trustee

Napa Valley College
Ms. Rosaura Segura
Board Trustee

Palomar College
Mr. Mark Evilsizer
Governing Board Trustee

Palomar College
Dr. John J. Halcón
Governing Board Trustee

San Diego Community College District
Dr. Maria Nieto Senour
Board Member

San Diego Community College District
Mr. Bernie Rhinerson
Board Member

Southwestern College
Ms. Nora E. Vargas
Board Member

Illinois (1)
Joliet Junior College
Mr. Michael O'Connell
Trustee

New York (1)
Nassau Community College
Dr. Jorge L. Gardyn
Chariman of the Board of Trustees

Texas (3)
Alamo Colleges
Mr. Robert Zarate
Board Member

Dallas County Community College District
Ms. Diana Flores
Vice Chari & Trustee

Dallas County Community College District
Ms. Monica Lira Bravo
Trustee

Washington (1)
Heritage University
Ms. Paula Linnen
Board Member

HISPANIC ASSOCIATION OF COLLEGES AND UNIVERSITIES

NATIONAL HEADQUARTERS

8415 Datapoint Dr., Suite 400
San Antonio, Texas 78229
tel: (210) 692-3805
fax: (210) 692-0823
email: hacu@hacu.net
Facebook: HACUNews
Twitter: @HACUNews

WASHINGTON, D.C. OFFICE

One Dupont Circle N.W., Suite 430
Washington, D.C. 20036
tel: (202) 833-8361
fax: (202) 261-5082
email: dcgr@hacu.net
Twitter: @HACUDC

HACU National Internship Program

tel: (202) 467-0893
fax: (202) 496-9177
email: hnip@hacu.net
Facebook: HACU National Internship Program
Twitter: @HNIP

WESTERN REGIONAL OFFICE

915 L Street, Suite 1425
Sacramento, CA 95814
tel: (916) 442-0392
fax: (916) 446-4028
email: wro@hacu.net
Twitter: @HACUWRO

Stay Connected with @HACUNews



The Champions of Hispanic Success in Higher Education