

February 15, 2012

Illinois Community College Board

FISCAL YEAR 2012 SPRING ENROLLMENT REPORT
Headcount and Full-time Equivalent (FTE) Both Down from Last Year.
Enrollments Remain Strong by Historical Standards.

Community colleges report opening Spring term enrollment figures to the Illinois Community College Board using a brief web based survey. These figures reflect student enrollments as of the end of registration for the Spring 2012 semester – usually the 10th day of the term.

Overall, short term statewide results of the fiscal year 2012 Spring enrollment survey show decreases from last year. Compared to the same term one year ago, statewide Spring 2012 headcount enrollments and full-time equivalent (FTE) enrollments both decreased. FTE figures reflect the total number of credit hours being taken by students divided by 15 – the number of semester hours traditionally considered a full-time class load. The Spring 2012 semester headcount was 370,816 compared to 381,582 last year (a headcount decrease of 10,766 or -2.8 percent). The latest FTE count was 209,966 compared with 219,752 a year ago (an FTE decrease of 9,786 or -4.5 percent).

Table 1 contains comparative statewide Spring tenth-day enrollments for the last five years. **The latest Spring enrollments remain strong by historical standards.** While down from recent record levels, Spring 2012 headcount and FTE enrollments are at the third highest level in the thirty-eight years that a separate Spring opening enrollment survey has been collected. Figure 1 on the next page illustrates a comparison of headcount and FTE trends from 2008 - 2012.

Table 1
SUMMARY OF OPENING SPRING ENROLLMENTS IN
ILLINOIS PUBLIC COMMUNITY COLLEGES FROM 2008 TO 2012

	Spring 2008	Spring 2009	Spring 2010	Spring 2011	Spring 2012
Headcount	351,777	361,837	389,432*	381,582	370,816
Percent Change	-0.6%	2.9%	7.6%	-2.0%	-2.8%
FTE	193,874	202,804	224,076	219,752	209,966
Percent Change	1.0%	4.6%	10.5%	-1.9%	-4.5%

* Adjusted Total

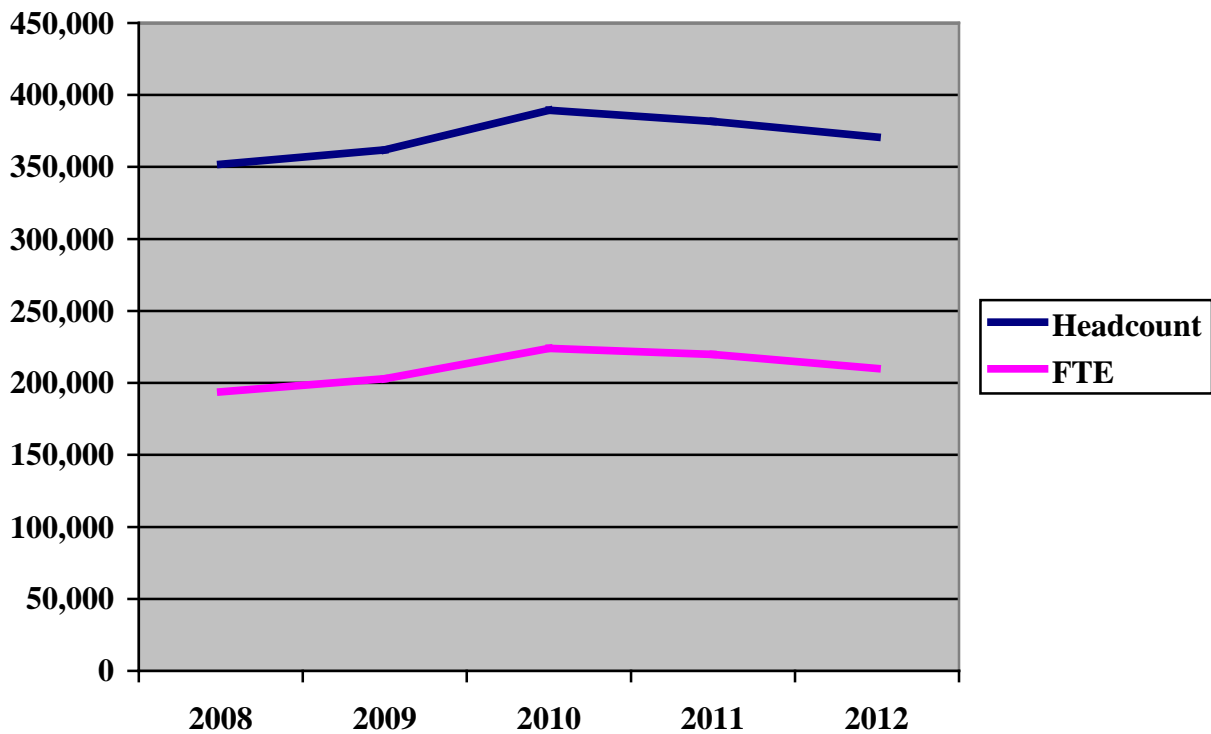


Figure 1
Opening Spring Enrollment Trends in Illinois
Public Community Colleges from 2008 to 2012

Table 2 provides a comparison of fiscal year 2008 through fiscal year 2012 Spring headcount enrollments for each community college. Among the 48 community colleges, since last year headcount increases were reported at 8 colleges (1.0 percent or higher). Thirty colleges saw decreases (1.0 percent or more) compared to last year. Ten colleges reported little or no change (less than 1.0 percent) versus last year. Longer term, statewide headcount enrollments were up 5.4 percent compared to Spring 2008.

Table 3 contains a comparison of full-time equivalent (FTE) enrollments for the same five-year period. Compared to last year, Spring 2012 FTE increases were reported by 6 colleges; decreases by 38, and 4 colleges indicated little or no change. Longer term, statewide FTE enrollments were up 8.3 percent compared to Spring 2008.

Table 4 provides fiscal year 2009 through fiscal year 2012 Spring opening enrollments in internet based courses at each community college. Enrollments in online courses continue to grow. At the beginning of the Spring 2012 semester, there were 102,477 students (duplicated) enrolled in internet courses compared to 98,735 in Spring 2011 (an increase of 3.8 percent) and 76,220 in Spring 2009 (an increase of 34.4 percent).

Illinois Community College Board
Table 2
SUMMARY COMPARISON OF SPRING HEADCOUNT ENROLLMENTS
BY COLLEGE, FISCAL YEARS 2008 - 2012

Dist. No.	College Name	Spring FY 2008 Headcount	Spring FY 2009 Headcount	Spring FY 2010 Headcount	Spring FY 2011 Headcount	Spring FY 2012 Headcount	Spring % Change 2008-2012	Spring % Change 2011-2012
503	Black Hawk	6,488	6,199	6,949	7,092	6,613	1.9 %	-6.8 %
508	Chicago	(56,824)	(60,215)	(65,516)	(62,765)	(61,751)	(8.7)	(-1.6)
06	Daley	9,478	9,591	9,442	8,684	8,158	-13.9	-6.1
01	Kennedy-King	6,472	7,272	7,260	6,450	6,339	-2.1	-1.7
03	Malcolm X	6,716	7,566	8,962	8,073	8,038	19.7	-0.4
05	Olive-Harvey	3,778	4,096	5,076	4,898	4,868	28.9	-0.6
04	Truman	11,766	12,331	13,443	13,154	13,006	10.5	-1.1
02	Washington	7,905	8,020	8,310	8,788	9,222	16.7	4.9
07	Wilbur-Wright	10,709	11,339	13,023	12,718	12,120	13.2	-4.7
507	Danville	2,611	2,829	3,360	3,528	3,342	28.0	-5.3
502	DuPage	25,760	26,382	27,982	27,037	27,186	5.5	0.6
509	Elgin	9,053	10,333	11,894	11,943	11,612	28.3	-2.8
512	Harper	14,414	14,495	15,770	15,872	15,425	7.0	-2.8
540	Heartland	4,556	4,906	5,103	5,268	5,254	15.3	-0.3
519	Highland	2,278	2,331	2,842	2,767	2,821	23.8	2.0
514	Illinois Central	11,222	11,545	12,744	12,491	11,622	3.6	-7.0
529	Illinois Eastern	(12,526)	(11,470)	(11,173)	(11,468)	(12,175)	(-2.8)	(6.2)
04	Frontier	2,645	2,694	2,474	2,360	2,077	-21.5	-12.0
01	Lincoln Trail	1,468	1,375	1,101	1,006	1,298	-11.6	29.0
02	Olney Central	2,163	2,077	2,260	2,017	1,819	-15.9	-9.8
03	Wabash Valley	6,250	5,324	5,338	6,085	6,981	11.7	14.7
513	Illinois Valley	4,072	4,018	4,519	4,396	4,084	0.3	-7.1
525	Joliet	13,397	14,713	16,140	16,379	16,079	20.0	-1.8
520	Kankakee	3,332	3,539	4,154	4,262	4,335	30.1	1.7
501	Kaskaskia	6,039	5,885	5,966	5,996	5,858	-3.0	-2.3
523	Kishwaukee	4,241	3,825	4,299	4,312	4,393	3.6	1.9
532	Lake County	15,999	16,987	18,567	18,602	18,454	15.3	-0.8
517	Lake Land	7,944	7,788	9,069	8,557	9,352	17.7	9.3
536	Lewis & Clark	8,163	8,338	8,506	8,587	8,623	5.6	0.4
526	Lincoln Land	6,817	7,181	8,276	7,774	7,593	11.4 %	-2.3 %

SOURCE OF DATA: Spring Semester Enrollment Surveys

Illinois Community College Board
Table 2
(Continued)
SUMMARY COMPARISON OF SPRING HEADCOUNT ENROLLMENTS
BY COLLEGE, FISCAL YEARS 2008 - 2012

Dist. No.	College Name	Spring FY 2008 Headcount	Spring FY 2009 Headcount	Spring FY 2010 Headcount	Spring FY 2011 Headcount	Spring FY 2012 Headcount	Spring % Change 2008-2012	Spring % Change 2011-2012
530	Logan	6,279	6,287	7,162	7,217	6,867	9.4 %	-4.8 %
528	McHenry	5,825	5,749	7,381	7,411	7,024	20.6	-5.2
524	Moraine Valley	16,815	18,130	18,772	18,628	17,992	7.0	-3.4
527	Morton	5,089	5,012	5,077	4,885	5,541	8.9	13.4
535	Oakton	11,433	11,270	11,867	11,935	11,311	-1.1	-5.2
505	Parkland	9,551	8,843	9,436	8,925	8,853	-7.3	-0.8
515	Prairie State	5,338	5,602	5,825	5,933	5,824	9.1	-1.8
521	Rend Lake	4,236	4,408 **	4,738	4,235	3,940	-7.0	-7.0
537	Richland	3,208	3,653	3,868	3,864	3,836	19.6	-0.7
511	Rock Valley	7,524	8,387	9,172	8,842	8,697	15.6	-1.6
518	Sandburg	2,619	2,477	2,518	2,378	2,360	-9.9	-0.8
506	Sauk Valley	2,864	2,784	2,860	2,513	2,478	-13.5	-1.4
531	Shawnee	2,264	2,421	2,470	2,667	2,329	2.9	-12.7
510	South Suburban	7,890	7,309	8,033 **	7,828	7,628	-3.3	-2.6
533	Southeastern	1,799	2,364	2,201	2,163	2,047	13.8	-5.4
522	Southwestern*	14,073	13,981	14,626	13,415	12,548	-10.8	-6.5
534	Spoon River	2,183	2,216	2,193	2,138	2,015	-7.7	-5.8
504	Triton	15,184	15,447	15,102	14,475	10,348	-31.8	-28.5
516	Waubonsee	9,289	10,009	10,495	10,461	10,419	12.2	-0.4
539	Wood	2,578	2,509	2,807	2,573	2,187	-15.2 %	-15.0 %
TOTALS/AVERAGES		351,777	361,837 **	389,432 **	381,582	370,816	5.4 %	-2.8 %

* Formerly Belleville Area College

** Colleges Provided Revised Figure

SOURCE OF DATA: Spring Semester Enrollment Surveys

Illinois Community College Board
Table 3
SUMMARY COMPARISON OF SPRING FTE ENROLLMENTS
BY COLLEGE, FISCAL YEARS 2008 - 2012

Dist. No.	College Name	Spring FY 2008 FTE	Spring FY 2009 FTE	Spring FY 2010 FTE	Spring FY 2011 FTE	Spring FY 2012 FTE	Spring % Change 2008-2012	Spring % Change 2011-2012
503	Black Hawk	3,414	3,353	3,619	3,693	3,684	7.9 %	-0.2 %
508	Chicago	(33,450)	(36,176)	(40,135)	(39,820)	(37,913)	(13.3)	(-4.8)
06	Daley	5,897	6,010	5,887	5,479	5,303	-10.1	-3.2
01	Kennedy-King	3,953	4,559	4,914	4,349	4,345	9.9	-0.1
03	Malcolm X	4,198	4,706	5,503	5,478	4,529	7.9	-17.3
05	Olive-Harvey	2,387	2,723	3,467	3,481	3,433	43.8	-1.4
04	Truman	6,153	6,605	7,399	7,712	6,920	12.5	-10.3
02	Washington	4,753	5,019	5,388	5,766	6,059	27.5	5.1
07	Wilbur-Wright	6,109	6,554	7,577	7,555	7,324	19.9	-3.1
507	Danville	1,535	1,640	2,046	2,028	1,878	22.3	-7.4
502	DuPage	14,002	14,573	15,791	15,003	14,782	5.6	-1.5
509	Elgin	5,040	5,712	6,684	6,751	6,607	31.1	-2.1
512	Harper	8,383	8,533	9,140	9,319	8,808	5.1	-5.5
540	Heartland	2,730	2,981	3,204	3,292	3,313	21.4	0.6
519	Highland	1,337	1,429	1,711	1,659	1,616	20.9	-2.6
514	Illinois Central	6,379	6,688	7,555	7,274	6,613	3.7	-9.1
529	Illinois Eastern	(4,039)	(4,069)	(4,262)	(3,719)	(3,752)	(-7.1)	(0.9)
04	Frontier	779	808	790	659	647	-16.9	-1.8
01	Lincoln Trail	737	676	631	593	623	-15.5	5.1
02	Olney Central	1,149	1,158	1,329	1,153	1,052	-8.4	-8.8
03	Wabash Valley	1,374	1,427	1,512	1,314	1,430	4.1	8.8
513	Illinois Valley	2,335	2,316	2,771	2,698	2,438	4.4	-9.6
525	Joliet	7,686	8,615	9,746	9,701	9,461	23.1	-2.5
520	Kankakee	1,908	2,091	2,549	2,606	2,475	29.7	-5.0
501	Kaskaskia	3,421	3,456	3,728	3,545	3,435	0.4	-3.1
523	Kishwaukee	2,570	2,428	2,794	2,876	2,909	13.2	1.1
532	Lake County	8,438	9,043	10,026	9,919	9,740	15.4	-1.8
517	Lake Land	4,291	4,418	5,101	4,855	4,966	15.7	2.3
536	Lewis & Clark	4,159	4,292	4,579	4,484	4,390	5.6	-2.1
526	Lincoln Land	4,005	4,178	4,773	4,661	4,554	13.7 %	-2.3 %

SOURCE OF DATA: Spring Semester Enrollment Surveys

Illinois Community College Board
Table 3
(Continued)
SUMMARY COMPARISON OF SPRING FTE ENROLLMENTS
BY COLLEGE, FISCAL YEARS 2008 - 2012

Dist. No.	College Name	Spring	FY 2009	FY 2010	Spring	Spring	Spring	Spring
		FY 2008	Spring	Spring	FY 2011	FY 2012	% Change	% Change
		FTE	FTE	FTE	FTE	FTE	2008-2012	2011-2012
530	Logan	3,818 **	3,691 **	4,166	3,755	3,503	-8.3 %	-6.7 %
528	McHenry	3,198 **	3,266	4,147	4,150	3,867	20.9	-6.8
524	Moraine Valley	9,503	10,067	10,742	10,676	10,337	8.8	-3.2
527	Morton	2,392	2,485	2,809	2,820	2,927	22.4	3.8
535	Oakton	6,034	6,133	6,309	6,382	6,214	3.0	-2.6
505	Parkland	5,625	5,623	6,045	5,809	5,605	-0.4	-3.5
515	Prairie State	2,907	2,971	3,386	3,540	3,357	15.5	-5.2
521	Rend Lake	2,352	2,453	2,645	2,555	2,285	-2.8	-10.6
537	Richland	1,697	1,854	2,158	2,075	1,939	14.3	-6.6
511	Rock Valley	4,509	4,890	5,549	5,492	5,258	16.6	-4.3
518	Sandburg	1,546	1,488	1,594	1,522	1,470	-4.9	-3.4
506	Sauk Valley	1,506	1,542	1,712	1,584	1,434	-4.8	-9.5
531	Shawnee	1,428	1,403	1,367	1,493	1,188	-16.8	-20.4
510	South Suburban	3,827	3,719	4,545	4,237	4,196	9.6	-1.0
533	Southeastern	1,174	1,239	1,308	1,102	1,033	-12.0	-6.3
522	Southwestern*	7,669	7,853	8,407	8,108	7,534	-1.8	-7.1
534	Spoon River	1,289	1,218	1,264	1,165	1,150	-10.8	-1.3
504	Triton	8,086	8,282	8,273	7,945	6,230	-23.0	-21.6
516	Waubonsee	4,640	5,100	5,634	5,756	5,660	22.0	-1.7
539	Wood	1,552	1,536	1,802	1,683	1,445	-6.9 %	-14.1 %
TOTALS/AVERAC		193,874 **	202,804 **	224,076	219,752	209,966	8.3 %	-4.5 %

* Formerly Belleville Area College

** Colleges Provided Corrected Figure

SOURCE OF DATA: Spring Semester Enrollment Surveys

Illinois Community College Board
Table 4
PRELIMINARY OPENING INTERNET ENROLLMENT, DUPLICATED COUNT
BY COLLEGE, FISCAL YEARS 2009 - 2012

Dist. No.	District/College	Spring 2009	Spring 2010	Spring 2011	Spring 2012	Spring % Change 2009-2012	Spring % Change 2011-2012
503	Black Hawk	1,843	1,973	2,162	2,650	43.8 %	22.6 %
508	Chicago	(5,428)	(6,344)	(7,419)	(7,939)	(46.3)	(7.0)
	06 Daley	620	700	840	844	36.1	0.5
	01 Kennedy-King	653	729	882	785	20.2	-11.0
	03 Malcolm X	535	679	769	891	66.5	15.9
	05 Olive-Harvey	446	575	726	748	67.7	3.0
	04 Truman	745	966	1,130	1,318	76.9	16.6
	02 Washington	1,530	1,594	1,766	1,832	19.7	3.7
	07 Wilbur-Wright	899	1,101	1,306	1,521	69.2	16.5
507	Danville	1,445	1,489	1,487	1,637	13.3	10.1
502	DuPage	4,712	7,415	7,944	8,514	80.7	7.2
509	Elgin	2,042	2,836	2,838	3,106	52.1	9.4
512	Harper	1,848	3,716	4,551	4,308	133.1	-5.3
540	Heartland	1,179	1,610	1,438	1,940	64.5	34.9
519	Highland	563	822	971	933	65.7	-3.9
514	Illinois Central	3,538	3,905	3,928	4,406	24.5	12.2
529	Illinois Eastern	(1,353)	(1,567)	(1,401)	(1,204)	(-11.0)	(-14.1)
	04 Frontier	101	106	126	81	-19.8	-35.7
	01 Lincoln Trail	410	415	405	388	-5.4	-4.2
	02 Olney Central	566	739	700	599	5.8	-14.4
	03 Wabash Valley	276	307	170	136	-50.7	-20.0
513	Illinois Valley	806	1,118	1,169	1,169	45.0	0.0
525	Joliet	2,499	3,572	4,186	4,692	87.8	12.1
520	Kankakee	1,490	2,013	1,315	1,192	-20.0	-9.4
501	Kaskaskia	2,814	3,742	3,353	3,724	32.3	11.1
523	Kishwaukee	1,877	2,199	2,096	2,378	26.7	13.5
532	Lake County	3,484	4,122	3,909	4,280	22.8	9.5
517	Lake Land	1,806	5,034	3,720	3,709	105.4	-0.3
536	Lewis & Clark	2,134	2,099	1,904	1,456	-31.8 %	-23.5 %

SOURCE OF DATA: Spring Semester Enrollment Surveys

Illinois Community College Board
Table 4
(Continued)
PRELIMINARY OPENING INTERNET ENROLLMENT, DUPLICATED COUNT
BY COLLEGE, FISCAL YEARS 2009 - 2012

Dist. No.	District/College	Spring 2009	Spring 2010	Spring 2011	Spring 2012	Spring % Change 2009-2012	Spring % Change 2011-2012
526	Lincoln Land	2,416	2,643	2,949	3,069	27.0 %	4.1 %
530	Logan	1,917	2,547	2,474	2,562	33.6	3.6
528	McHenry	1,481	1,632	1,597	1,851	25.0	15.9
524	Moraine Valley	2,784	3,110	3,100	3,376	21.3	8.9
527	Morton	283	545	583	566	100.0	-2.9
535	Oakton	1,925	2,718	2,951	3,334	73.2	13.0
505	Parkland	4,816	5,289	5,080	4,933	2.4	-2.9
515	Prairie State	909	1,072	1,080	797	-12.3	-26.2
521	Rend Lake	860	886	888	893	3.8	0.6
537	Richland	1,097	1,306	1,468	1,398	27.4	-4.8
511	Rock Valley	1,141	1,536	1,332	1,394	22.2	4.7
518	Sandburg	824	1,086	1,081	1,039	26.1	-3.9
506	Sauk Valley	870	1,039	1,109	962	10.6	-13.3
531	Shawnee	649	726	752	740	14.0	-1.6
510	South Suburban	1,271	1,310	1,865	1,225	-3.6	-34.3
533	Southeastern	1,361	1,572	1,346	1,155	-15.1	-14.2
522	Southwestern	2,522	2,798	3,179	3,384	34.2	6.4
534	Spoon River	370	743	811	683	84.6	-15.8
504	Triton	3,321	3,704	3,803	4,202	26.5	10.5
516	Waubonsee	3,621	4,115	4,459	4,522	24.9	1.4
539	Wood	921	1,035	1,037	1,155	25.4 %	11.4 %
TOTALS/AVERAGES		76,220	96,988	98,735	102,477	34.4 %	3.8 %

SOURCE OF DATA: Spring Semester Enrollment Surveys