

Adult Education and Literacy Program

Fiscal Year 2016 Report



**COMMUNITY COLLEGES &
WORKFORCE PREPARATION**
PROSPERITY THROUGH EDUCATION

**IOWA DEPARTMENT
OF EDUCATION**



Grimes State Office Building

Phone: 515-281-8260
Fax: 515-242-5988
www.educateiowa.gov

Ryan Wise
Director, Iowa Department
of Education
515-281-3436
ryan.wise@iowa.gov

Jeremy Varner
Administrator, Division of
Community Colleges and
Workforce Preparation
515-281-8260
jeremy.varner@iowa.gov

Barbara Burrows
Chief, Bureau of
Community Colleges
515-281-0319
barbara.burrows@iowa.gov

Alex Harris
State Director of
Adult Education and Literacy
515-281-3640
alex.harris@iowa.gov

Published:
2016

**State of Iowa
Department of Education**
Grimes State Office Building
400 E. 14th Street
Des Moines, IA 50319-0146

State Board of Education

Charles C. Edwards, Jr., President, Des Moines
Michael L. Knedler, Vice President, Council Bluffs
Brooke Axiotis, Des Moines
Michael Bearden, Gladbrook
Bettie Bolar, Marshalltown
Diane Crookham-Johnson, Oskaloosa
Angela English, Dyersville
Mike May, Spirit Lake
Mary Ellen Miller, Wayne County
Robert Nishimwe, Student Member, Sioux City

Administration

Ryan M. Wise, Director and Executive Officer
of the State Board of Education

**Division of Community Colleges
and Workforce Preparation**

Jeremy Varner, Division Administrator

Bureau of Community Colleges

Barbara Burrows, Bureau Chief
Alex Harris, State Director of Adult
Education and Literacy

It is the policy of the Iowa Department of Education not to discriminate on the basis of race, creed, color, sexual orientation, gender identity, national origin, sex, disability, religion, age, political party affiliation, or actual or potential parental, family or marital status in its programs, activities, or employment practices as required by the Iowa Code sections 216.9 and 256.10(2), Titles VI and VII of the Civil Rights Act of 1964 (42 U.S.C. § 2000d and 2000e), the Equal Pay Act of 1973 (29 U.S.C. § 206, et seq.), Title IX (Educational Amendments, 20 U.S.C. §§ 1681 – 1688), Section 504 (Rehabilitation Act of 1973, 29 U.S.C. § 794), and the Americans with Disabilities Act (42 U.S.C. § 12101, et seq.). If you have questions or complaints related to compliance with this policy by the Iowa Department of Education, please contact the legal counsel for the Iowa Department of Education, Grimes State Office Building, 400 E. 14th Street, Des Moines, IA 50319-0146, telephone number: 515-281-5295, or the Director of the Office for Civil Rights, U.S. Department of Education, Citigroup Center, 500 W. Madison Street, Suite 1475, Chicago, IL 60661-4544, telephone number: 312-730-1560, FAX number: 312-730-1576, TDD number: 877-521-2172, email: OCR.Chicago@ed.gov.

About the Report

The Department of Education, Division of Community Colleges and Workforce Preparation, is preparing this report in response to the Skilled Iowa and Job Creation Fund for the state appropriation for Adult Basic Education and Adult Education Literacy (AEL) Programs (260C.50) This report was coordinated by the Department with the assistance of Iowa's 15 community colleges.

Acknowledgments

The staff and administration of the Division of Community Colleges and Workforce Preparation wish to acknowledge and thank the 15 community college presidents and their staff for their assistance in developing this report. The figures noted in this report were obtained from each of Iowa's 15 community colleges.

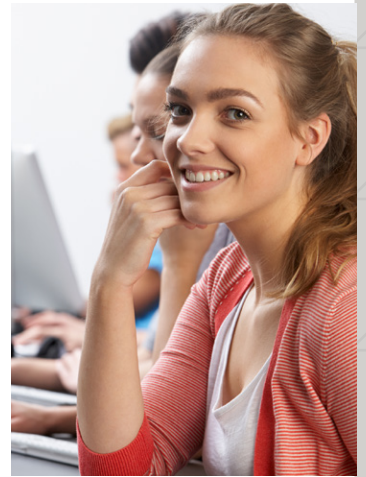




Table of Contents

Introduction	1
<i>Eligible Costs</i>	1
<i>Program Components</i>	2
<i>Process</i>	2
Methods	3
Analysis	3
Summary Tables	5

Introduction

Adult education has a rich history in Iowa of providing services that assist adults in improving their skills, achieving their educational goals, and transitioning to further education or employment. Instruction is designed for adults functioning at the lowest levels of basic skills and English language instruction to advanced levels of learning. As defined by Title II of the Workforce Innovation and Opportunity Act (WIOA), Adult education enables adults to: (1) become literate and obtain the knowledge and skills necessary for employment and self-sufficiency; (2) obtain the educational skills necessary to become full partners in the educational development of their children; and (3) complete a secondary school education.

Adult education offers solutions. Adult education's history of responding to learners' needs is addressing the skill gap and economic demands of Iowa's workforce regions. Whether a learner's goals are related to personal improvement, family literacy, further training, or employment, undereducated adults in Iowa need a system that provides clear pathways and support.

Eligible Costs

Funds received from state funding sources for adult education and literacy (AEL) programs shall adhere to the allowable use restrictions of the Adult Education and Family Literacy Act, (AEFLA) and subsequent adult education legislation, except for administrative cost restrictions. Exceptions include the allowable use of funds for high school equivalency testing, administration, and associated costs. Only activities directly linked to AEL programs and instruction shall be funded with monies received from state AEL funds. Since the intent of the state funds were to expand services and improve the quality of AEL programs, the state and federal funds were supplemented to

ADULT EDUCATION IS NOT DEVELOPMENTAL EDUCATION

But it provides for the acquisition of basic skills for adults desiring to prepare for postsecondary education.



ADULT EDUCATION IS NOT CAREER AND TECHNICAL EDUCATION

But it provides adults with the foundational skills to successfully complete occupational training courses.



ADULT EDUCATION IS NOT POSTSECONDARY EDUCATION

But it provides rigorous instruction to assist adult education learners in transitioning successfully into credit-bearing coursework and bypassing developmental coursework.



ADULT EDUCATION IS NOT A PUBLIC ASSISTANCE PROGRAM

But it provides assistance to many who might be struggling to gain the necessary basic skills to earn a high school credential, qualify for further training, and find sustaining employment.

deliver services to all eligible participants. Consideration should be given to providing AEL activities concurrently with workforce preparation activities and workforce training for the purpose of educational and career advancement.

Program Components

Eligible institutions maintain the ability to provide the following AEL services as deemed appropriate by the community or needs of the students.

1. Adult basic education.
2. Programs for adults of limited English proficiency.
3. Adult secondary education, including programs leading to the achievement of a high school equivalency certificate and/or high school diploma.
4. Instructional services provided by qualified instructors to improve student proficiencies necessary to function effectively in adult life, including accessing further education, employment-related training, or employment.
5. Assessment and guidance services adhering to state's assessment policy.
6. Programs and services stipulated by current and subsequent adult education legislation.
 - a. Institutions shall effectively use technology, services, and delivery systems, including distance education in a manner sufficient to increase the amount and quality of student learning and performance.

Process

AEL state funds are distributed based upon the state general aid (SGA) formula. However, state funds designated for English as a Second Language (ESL) are jointly distributed by the Department and the community colleges based on need for instruction in the region as determined by census survey and local outreach efforts.

Federal AEL funds are distributed by performance (15 percent) and need (85 percent) to all community colleges. These funds include a specific carve-out for English Language and Civics Education, averaging \$285,388, in the last two years. Each federally-funded program also submits an annual local plan, detailing the services and strategies for the upcoming year. Each plan highlights the local area needs, past effectiveness, and current planned activities that demonstrate continuous improvement. Added emphasis has been placed on the criteria of sufficient intensity and duration with collaborative approaches for providing support services for participants.

Methods

For this report, a fiscal year (FY) is the 12-month period from July 1 to June 30. For an eligible individual to enroll in AEL services, a pre-test is administered that measures basic skill levels. As long as the individual scores under a twelfth grade level in math and/or reading, or lacks a high school credential, they are eligible for services and counted as an eligible individual for reporting. Total courses include eligible individuals and participants who are enrolled in the community college Management Information System (MIS) and can include more than one AEL course, such as English as a Second Language (ESL) and basic skill development throughout the course of the year. To be counted as an AEL participant, eligible individuals must attend instruction for 12 or more hours before being eligible to count for federal reporting.

Finally, those participants who achieve a skill gain, are those that persist with hours of instruction, post-test, and make an educational level gain in either math or reading—depending on their instructional goal or focus. Skill gains are equivalent to grade or multiple grade level completion.

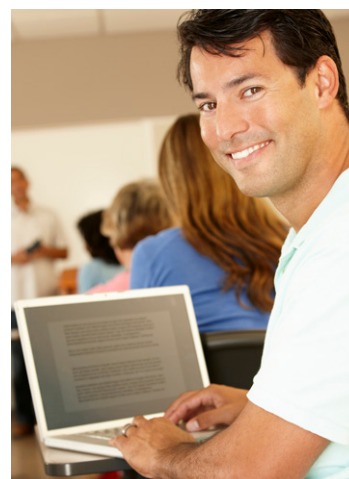
Analysis

This report compares AEL financial allocations, expenditures, and performance for fiscal years 2016 and 2015.

The financial allocations for fiscal year 2016 includes state appropriated funds for AEL as well as for ESL programs. Programs receive an annual allocation of \$5,140,000 to expand their services to eligible individuals.

Federal allocations to Iowa's AEL programs has steadily declined over the past 10 years by 14.7 percent. In FY16, Iowa received \$3,450,141 of which \$2,943,026 was allocated to local programs.

In addition to new funds, programs carried forward \$1,248,843 from state funds from FY15. Many programs have expanded their access to services within their regions and improved partnerships with workforce delivery services as part of WIOA.





An average of 89.7 percent of the available funds was spent in FY 16, a 7.2 percent increase in spending from the previous FY. Of the \$8,365,117 expended, in FY 16, 75 percent (7,048,902) was spent on direct instruction from state and federal funds. Total administrative expenditures by 15 programs was 7.4 percent (\$690,509) of the expended funds.

While unduplicated eligible individuals in adult education decreased in FY16 by 0.3 percent, participants and skill gains continued to improve compared to FY15. Participants who remained in the program longer than 12 hours saw a slight increase with 12,378 (1.4 percent).

To measure educational gains, AEL programs pre- and post-test participants after a minimum number of instructional hours. Without a post-test, measuring gains would be impossible. Of the FY16 participants, 62.8 percent were post-tested (7,773) a slight increase of 0.06 percent compared to FY15. Of those that post-tested, 5,453 (70.2 percent) demonstrated an educational functioning level gain in FY16 (often reflected as an increase in one to two grade levels).

Performance reflects not only educational gains, but also the awarding of Iowa's High School Equivalency Diploma (HSED) for eligible students passing the state identified assessment, the HiSET®, as a measurement of high school equivalency. In FY16, 1,866 diplomas were issued.

Core measure reporting for AEL, which typically includes entering and retaining employment and entering postsecondary or transition training, was not available at the time of this report due to lags in reporting wage information and data from the National Student Clearinghouse. This data will be reported in a federal report and captured in the annual publication, *Condition of Iowa's Community Colleges 2016*.

TABLE 1: AEL FISCAL SUMMARY FOR ALL PROGRAMS: FY 2016

State Fiscal Year Budget

Carry Forward from Prior FY	\$1,248,843
Current Year State Allocation	\$5,140,000

State AEL Line Item	Expenses per Quarter				YTD Expenditure
	Q1	Q2	Q3	Q4	
Administrative Expenses	\$107,976	\$98,657	\$99,953	\$153,135	\$459,720
Instructional Expenses	\$673,806	\$740,976	\$702,661	\$1,219,444	\$3,336,886
Professional Development Expenses	\$32,689	\$27,067	\$19,896	\$49,376	\$129,028
HSED Expenses	\$72,305	\$90,803	\$121,805	\$139,939	\$424,851
TOTAL	\$886,776	\$957,503	\$944,314	\$1,561,893	\$4,350,486

Carry Forward to Next FY: \$575,801

State ESL Line Item	Expenses per Quarter				YTD Expenditure
	Q1	Q2	Q3	Q4	
Administrative Expenses	\$14,513	\$18,688	\$15,894	\$16,331	\$65,426
Instructional Expenses	\$254,055	\$361,282	\$316,778	\$350,447	\$1,282,562
Professional Development Expenses	\$6,738	\$5,546	\$1,965	\$2,793	\$17,042
TOTAL	\$275,306	\$385,516	\$334,637	\$369,571	\$1,365,030

Carry Forward to Next FY: \$97,526

Federal Fiscal Year Budget

Carry Forward from Prior FY	\$51,357
Current Year Federal Allocation	\$2,943,026

Federal AEL/EL-Civics Line Item	Expenses per Quarter				YTD Expenditure
	Q1	Q2	Q3	Q4	
Administrative Expenses	\$54,208	\$43,757	\$41,085	\$32,313	\$171,363
AEL Instruction Expenses	\$516,686	\$662,693	\$533,862	\$510,244	\$2,223,485
EL-Civics Instruction Expenses	\$50,697	\$101,411	\$34,553	\$19,308	\$205,969
Professional Development Expenses	\$8,576	\$14,488	\$9,042	\$16,677	\$48,783
TOTAL	\$630,167	\$822,349	\$618,542	\$578,542	\$2,649,600

Carry Forward to Next FY: \$293,426

* Additional funds from State Leadership were allocated to local programs.

TABLE 2A: AEL PROGRAM SUMMARY BY COLLEGE: FY16

College	Federal Allocation	State Allocation	Total Expenditures ¹	Total Courses ²	Eligible Individuals ³	Participants ⁴	Skill Gains ⁵	HSED Awards
Northeast Iowa	\$126,820	\$231,876	\$380,255	584	306	292	77	41
North Iowa Area	\$103,398	\$230,258	\$260,193	527	394	262	151	67
Iowa Lakes	\$69,089	\$211,162	\$261,828	389	242	164	58	22
Northwest Iowa	\$85,028	\$126,684	\$239,289	692	321	192	80	12
Iowa Central	\$183,538	\$292,575	\$487,725	3,001	1,530	1,197	664	207
Iowa Valley	\$147,321	\$242,926	\$439,924	1,841	675	535	293	59
Hawkeye	\$198,699	\$332,971	\$671,778	2,617	954	806	406	40
Eastern Iowa	\$291,312	\$415,315	\$670,213	3,473	1,881	1,167	630	358
Kirkwood	\$264,751	\$737,239	\$940,823	5,539	2,418	1,287	463	169
Des Moines Area	\$688,896	\$1,041,531	\$1,726,387	7,892	3,710	3,389	1,412	444
Western Iowa Tech	\$232,819	\$334,051	\$566,427	3,651	1,785	1,141	534	82
Iowa Western	\$165,199	\$287,036	\$457,362	3,439	1,405	700	238	173
Southwestern	\$85,540	\$120,441	\$187,700	664	332	155	72	30
Indian Hills	\$160,373	\$338,167	\$685,882	1,358	717	429	116	72
Southeastern	\$140,243	\$197,766	\$389,331	2,327	1,101	662	259	90
TOTAL	\$2,943,026	\$5,140,000	\$8,365,117	37,994	17,771	12,378	5,453	1,866

TABLE 2B: AEL PROGRAM SUMMARY BY COLLEGE: FY15

College	Federal Allocation	State Allocation	Total Expenditures ¹	Total Courses ²	Eligible Individuals ³	Participants ⁴	Skill Gains ⁵	HSED Awards
Northeast Iowa	\$136,741	\$232,411	\$373,896	440	431	223	52	24
North Iowa Area	\$107,137	\$231,338	\$222,469	485	460	233	142	54
Iowa Lakes	\$68,422	\$212,989	\$386,965	217	212	146	66	37
Northwest Iowa	\$80,538	\$127,262	\$179,125	349	288	209	66	6
Iowa Central	\$194,774	\$299,727	\$537,648	1,515	1,457	1,050	452	212
Iowa Valley	\$138,696	\$239,597	\$353,970	895	684	522	283	78
Hawkeye	\$199,785	\$337,364	\$523,807	1,045	1,007	804	446	46
Eastern Iowa	\$272,076	\$417,309	\$723,321	1,899	1,813	1,142	665	381
Kirkwood	\$286,803	\$729,867	\$1,369,119	3,638	2,758	1,261	389	145
Des Moines Area	\$658,557	\$1,026,118	\$1,791,974	3,967	3,851	3,460	1,512	502
Western Iowa Tech	\$233,121	\$333,931	\$698,728	1,458	1,439	1,105	518	83
Iowa Western	\$156,655	\$288,789	\$442,316	1,365	1,349	696	315	197
Southwestern	\$89,659	\$120,870	\$189,842	319	317	145	62	24
Indian Hills	\$178,373	\$342,421	\$567,284	809	778	481	167	80
Southeastern	\$135,132	\$200,006	\$277,828	1,116	982	726	235	73
TOTAL	\$2,937,285	\$5,140,000	\$8,638,292	19,517	17,826	12,203	5,370	1,942

1 Total Expenditures—includes carry over funds from previous FY.

2 Total Courses—Based on MIS enrollment could be co-enrolled.

3 Eligible Individuals—Represents unduplicated headcount.

4 Participants—Eligible Individuals enrolled that attend 12+ hours with a pre-test.

5 Skill Gains—Participants that persist with at least 40+ hours of instruction and post-test with a level gain.

TABLE 3A: AEL PROGRAM EXPENDITURES BY COLLEGE, STATE AEL: FY16

College	Administrative	Professional Development	AEL Instruction	HSED Expenses	Total Expenditures	Allocation Remaining
Northeast Iowa	\$25,841	\$0.00	\$185,680	\$0.00	\$211,522	\$15,800
North Iowa Area	\$41,568	\$18,746	\$48,890	\$11,543	\$120,747	\$305,500
Iowa Lakes	\$78,187	\$7,635	\$79,304	\$0.00	\$165,127	\$14,781
Northwest Iowa	\$29,587	\$1,081	\$125,899	\$0.00	\$156,567	\$48,956
Iowa Central	\$25,981	\$4,066	\$201,083	\$113	\$231,243	\$0.00
Iowa Valley	\$5,537	\$3,462	\$195,882	\$13,117	\$217,998	\$32,391
Hawkeye	\$362	\$31,141	\$369,899	\$500	\$401,902	\$0.00
Eastern Iowa	\$25,895	\$7,171	\$274,166	\$42,740	\$349,973	\$0.00
Kirkwood	\$72,129	\$14,721	\$558,481	\$20,625	\$665,956	\$0.00
Des Moines Area	\$18,754	\$8,842	\$441,431	\$180,928	\$649,955	\$0.00
Western Iowa Tech	\$5,040	\$2,980	\$198,004	\$9,215	\$215,239	\$0.00
Iowa Western	\$71,720	\$3,925	\$131,954	\$38,446	\$246,044	\$0.00
Southwestern	\$13,529	\$2,284	\$50,098	\$12,674	\$78,585	\$74,793
Indian Hills	\$21,049	\$15,227	\$281,156	\$92,166	\$409,597	\$15,566
Southeastern	\$24,543	\$7,747	\$194,958	\$2,785	\$230,032	\$68,014
TOTAL	\$459,720	\$129,028	\$3,336,886	\$424,851	\$4,350,486	\$575,801
% of TOTAL	10.6	3.0	76.7	9.8	100.0	—

TABLE 3B: AEL PROGRAM EXPENDITURES BY COLLEGE, STATE ESL: FY16

College	Administrative	Professional Development	ESL Instruction	Total Expenditures	Allocation Remaining
Northeast Iowa	\$18,237	\$2,971	\$23,828	\$45,035	\$0.00
North Iowa Area	\$0.00	\$71	\$39,506	\$39,577	\$6,321
Iowa Lakes	\$0.00	\$0.00	\$31,254	\$31,254	\$0.00
Northwest Iowa	\$5,709	\$1,696	\$30,357	\$37,762	\$443
Iowa Central	\$0.00	\$0.00	\$72,944	\$72,944	\$0.00
Iowa Valley	\$0.00	\$0.00	\$74,605	\$74,605	\$37,044
Hawkeye	\$22,067	\$0.00	\$49,110	\$71,177	\$0.00
Eastern Iowa	\$0.00	\$1,729	\$82,020	\$83,749	\$0.00
Kirkwood	\$709	\$1,704	\$127,736	\$130,149	\$0.00
Des Moines Area	\$7,078	\$5,853	\$378,647	\$391,578	\$0.00
Western Iowa Tech	\$682	\$1,018	\$117,112	\$118,812	\$0.00
Iowa Western	\$0.00	\$0.00	\$63,829	\$63,829	\$0.00
Southwestern	\$0.00	\$160	\$29,672	\$29,832	\$27,485
Indian Hills	\$5,900	\$797	\$109,215	\$115,912	\$0.00
Southeastern	\$5,043	\$1,044	\$52,729	\$58,816	26,234
TOTAL	\$65,426	\$17,042	\$1,282,564	\$1,365,030	\$97,526
% of TOTAL	4.8	1.2	94.0	100.0	—

TABLE 3C: AEL PROGRAM EXPENDITURES BY COLLEGE, STATE AEL: FY15

College	Administrative	Professional Development	AEL Instruction	HSED Expenses	Total Expenditures	Allocation Remaining
Northeast Iowa	\$20,832	\$1,785	\$173,561	\$0.00	\$196,179	\$32,983
North Iowa Area	\$39,340	\$2,857	\$38,023	\$671	\$80,891	\$231,936
Iowa Lakes	\$72,613	\$10,718	\$177,464	\$0.00	\$260,795	\$0.00
Northwest Iowa	\$4,675	\$0.00	\$43,764	\$0.00	\$48,440	\$117,044
Iowa Central	\$25,085	\$5,990	\$229,918	\$432	\$261,426	\$11,612
Iowa Valley	\$0.00	\$2,511	\$129,905	\$944	\$133,359	\$78,555
Hawkeye	\$13,400	\$21,387	\$214,732	\$200	\$249,719	\$140,108
Eastern Iowa	\$25,089	\$17,702	\$270,817	\$30,753	\$344,361	\$18,406
Kirkwood	\$59,000	\$22,614	\$802,734	\$29,715	\$914,063	\$56,955
Des Moines Area	\$35,202	\$1,629	\$539,438	\$137,957	\$714,225	\$0.00
Western Iowa Tech	\$25,569	\$2,158	\$263,049	\$4,127	\$294,903	\$0.00
Iowa Western	\$111,330	\$8,005	\$90,736	\$14,668	\$224,739	\$12,146
Southwestern	\$4,545	\$1,374	\$52,951	\$14,011	\$72,881	\$63,186
Indian Hills	\$14,023	\$7,052	\$282,075	\$79,079	\$382,229	\$143,936
Southeastern	\$33,917	\$4,535	\$90,433	\$106	\$128,990	\$134,430
TOTAL	\$484,621	\$110,317	\$3,399,780	\$312,662	\$4,307,200	\$1,041,297
% of TOTAL	11.3	2.6	79.3	7.3	100.0	—

TABLE 3D: AEL PROGRAM EXPENDITURES BY COLLEGE, STATE ESL: FY15

College	Administrative	Professional Development	ESL Instruction	Total Expenditures	Allocation Remaining
Northeast Iowa	\$19,992	\$1,695	\$17,575	\$39,262	\$4,659
North Iowa Area	\$0.00	\$1,153	\$37,027	\$38,180	\$9,950
Iowa Lakes	\$0	\$2,639	\$54,293	\$56,932	\$0.00
Northwest Iowa	\$5,709	\$0.00	\$44,702	\$50,411	\$2,331
Iowa Central	\$0.00	\$0.00	\$81,448	\$81,448	\$0.00
Iowa Valley	\$0.00	\$188	\$78,247	\$78,435	\$41,097
Hawkeye	\$3,693	\$2,091	\$68,083	\$73,867	\$0.00
Eastern Iowa	\$0.00	\$1,569	\$101,315	\$102,884	\$0.00
Kirkwood	\$2,269	\$1,935	\$166,759	\$170,964	\$0.00
Des Moines Area	\$24,134	\$6,148	\$394,220	\$424,502	\$0.00
Western Iowa Tech	\$6,929	\$4,638	\$159,137	\$170,704	\$0.00
Iowa Western	\$0.00	\$0.00	\$61,184	\$61,184	\$10,691
Southwestern	\$1,498	\$0.00	\$25,784	\$27,283	\$27,068
Indian Hills	\$0.00	\$554	\$39,044	\$39,598	\$60,850
Southeastern	\$0.00	\$4,470	\$12,279	\$16,749	\$50,901
TOTAL	\$64,225	\$27,079	\$1,341,098	\$1,432,402	\$207,546
% of TOTAL	4.6	1.8	93.6	100.0	—

CHART 1A. AEL PROGRAM EXPENDITURES BY QUARTER, STATE AEL: FY16

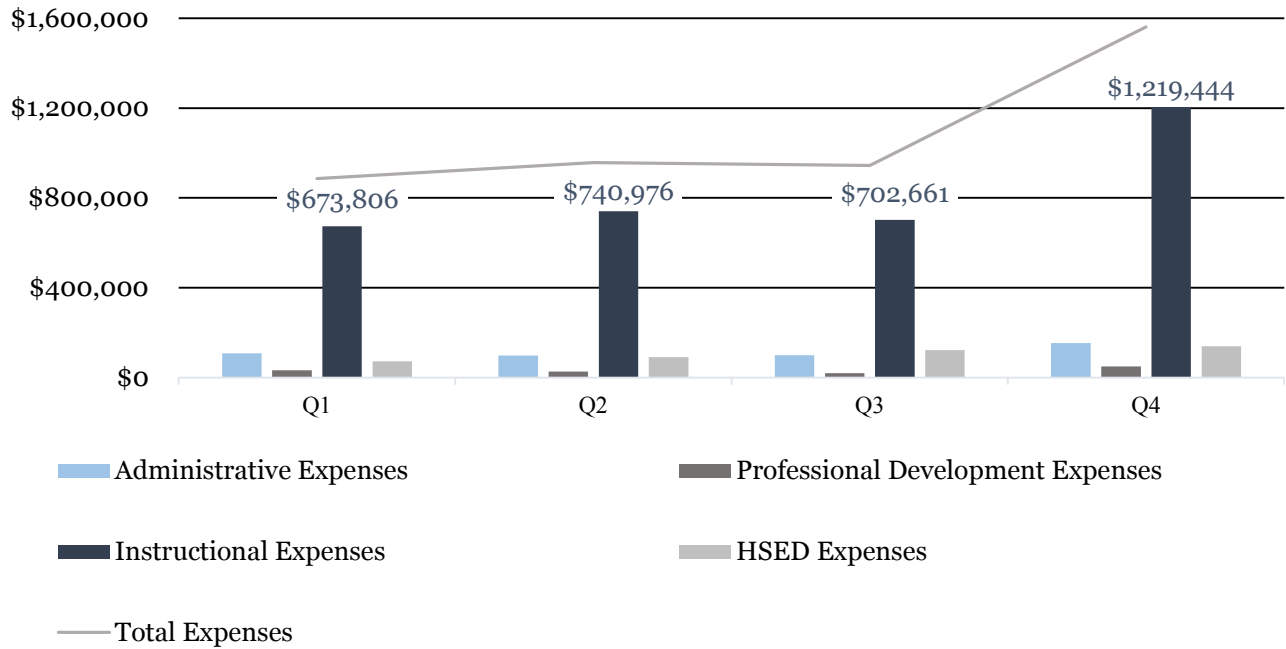


CHART 1B. AEL PROGRAM EXPENDITURES BY QUARTER, STATE ESL: FY16

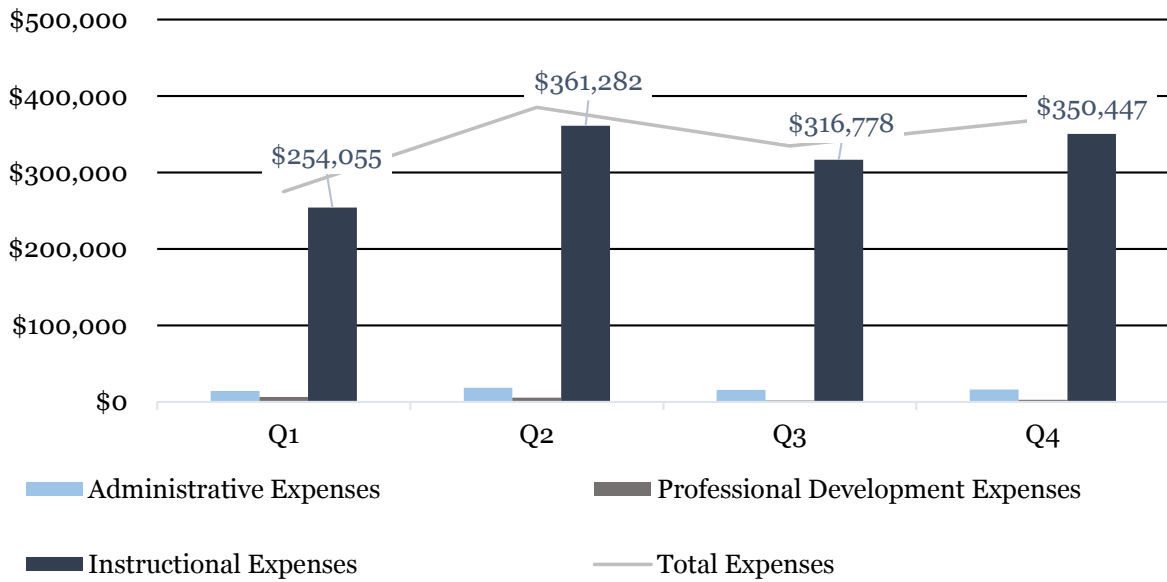


TABLE 4A: AEL PROGRAM EXPENDITURES BY COLLEGE, FEDERAL AEL: FY16

College	Administrative	Professional Development	AEL Instruction	EL/Civics Instruction	Total Expenditures	Allocation Remaining
Northeast Iowa	\$7,599	\$2,478	\$108,300	\$5,321	\$123,698	\$3,122
North Iowa Area	\$4,616	\$2,458	\$87,794	\$5,001	\$99,870	\$3,528
Iowa Lakes	\$3,039	\$1,402	\$57,391	\$3,615	\$65,447	\$3,642
Northwest Iowa	\$6,142	\$1,612	\$34,149	\$3,058	\$44,960	\$40,068
Iowa Central	\$8,762	\$4,070	\$155,039	\$15,667	\$183,538	\$0.00
Iowa Valley	\$0	\$2,969	\$130,181	\$14,171	\$147,321	\$0.00
Hawkeye	\$9,736	\$3,098	\$171,558	\$14,307	\$198,699	\$0.00
Eastern Iowa	\$35,234	\$2,517	\$194,869	\$3,881	\$236,491	\$54,821
Kirkwood	\$7,338	\$2,854	\$121,911	\$12,614	\$144,718	\$120,033
Des Moines Area	\$22,272	\$8,218	\$575,587	\$78,777	\$684,854	\$4,042
Western Iowa Tech	\$11,215	\$4,136	\$191,011	\$26,014	\$232,376	\$443
Iowa Western	\$22,271	\$3,802	\$113,365	\$8,051	\$147,489	\$17,710
Southwestern	\$11,501	\$1,761	\$62,358	\$3,663	\$79,284	\$6,256
Indian Hills	\$7,672	\$3,061	\$140,974	\$8,666	\$160,373	\$0.00
Southeastern	\$13,975	\$4,347	\$78,998	\$3,163	\$100,483	\$39,760
TOTAL	\$171,363	\$48,783	\$2,223,485	\$205,969	\$2,649,600	\$293,426
% of TOTAL	6.5	1.8	83.9	7.8	100.0	—

TABLE 4B: AEL PROGRAM EXPENDITURES BY COLLEGE, FEDERAL AEL: FY15

College	Administrative	Professional Development	AEL Instruction	EL/Civics Instruction	Total Expenditures	Allocation Remaining
Northeast Iowa	\$6,270	\$3,223	\$122,964	\$5,998	\$138,455	\$2,286
North Iowa Area	\$4,790	\$1,426	\$91,976	\$5,206	\$103,398	\$3,739
Iowa Lakes	\$5,000	\$645	\$59,625	\$3,968	\$69,238	\$0.00
Northwest Iowa	\$11,834	\$1,131	\$61,744	\$5,564	\$80,274	\$264
Iowa Central	\$8,390	\$1,769	\$165,868	\$18,747	\$194,774	\$0.00
Iowa Valley	\$0	\$1,366	\$128,520	\$12,291	\$142,176	\$520
Hawkeye	\$9,117	\$49	\$176,018	\$15,038	\$200,221	\$307
Eastern Iowa	\$37,511	\$4,062	\$219,884	\$14,619	\$276,076	\$0.00
Kirkwood	\$12,531	\$3,604	\$244,837	\$23,120	\$284,092	\$2,711
Des Moines Area	\$54,033	\$5,339	\$518,007	\$75,868	\$653,247	\$5,310
Western Iowa Tech	\$10,239	\$1,035	\$195,385	\$26,461	\$233,121	\$0.00
Iowa Western	\$21,062	\$1,924	\$124,859	\$8,548	\$156,394	\$261
Southwestern	\$12,121	\$985	\$72,832	\$3,741	\$89,679	\$0.00
Indian Hills	\$6,043	\$2,650	\$129,186	\$7,578	\$145,458	\$32,915
Southeastern	\$6,508	\$836	\$120,568	\$4,176	\$132,089	\$3,043
TOTAL	\$205,449	\$30,045	\$2,432,274	\$230,274	\$2,898,691	\$51,357
% of TOTAL	7.1	1.0	83.9	8.0	100.0	—

CHART 2. AEL PROGRAM EXPENDITURES BY QUARTER, FEDERAL AEL/EL CIVICS: FY16

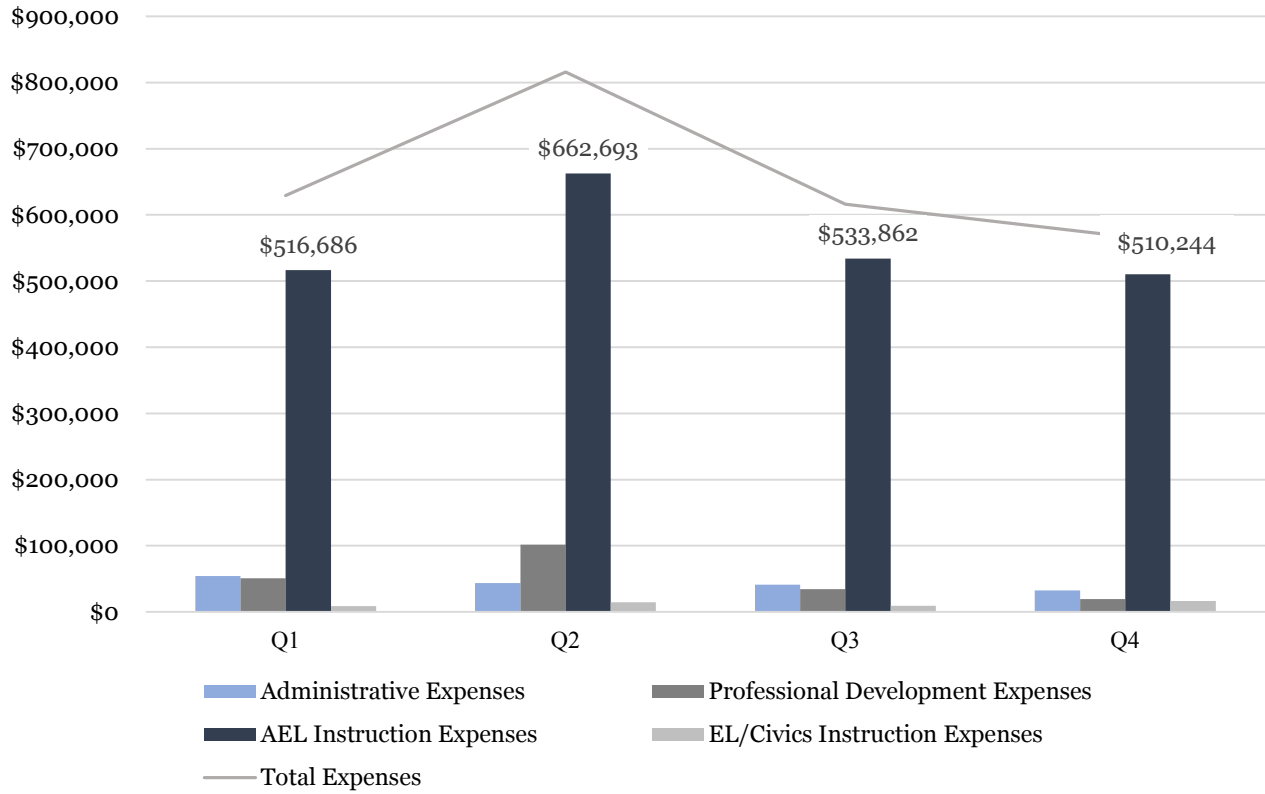


TABLE 5A AEL EDUCATIONAL FUNCTIONING LEVEL GAINS¹ BY COLLEGE: FY16

College	Adult Basic Education ²	Adult Secondary Education ³	English as a Second Language ⁴	Total Participants	Participant Rate ⁵	Total Post Tested	Post-Test Rate ⁶	Total Skill Gains ⁷
Northeast Iowa	183	52	57	292	95.4%	108	37.0%	77
North Iowa Area	155	37	70	262	66.5%	160	61.1%	151
Iowa Lakes	79	21	64	164	67.8%	97	59.1%	58
Northwest Iowa	60	20	112	192	59.8%	129	67.2%	80
Iowa Central	690	148	359	1,197	78.2%	839	70.1%	664
Iowa Valley	208	34	293	535	79.3%	375	70.1%	293
Hawkeye	245	73	488	806	84.5%	562	69.7%	406
Eastern Iowa	735	141	291	1,167	62.0%	751	64.4%	630
Kirkwood	560	231	496	1,287	53.2%	772	60.0%	463
Des Moines Area	1,347	336	1,706	3,389	91.3%	2,194	64.7%	1,412
Western Iowa Tech	274	80	787	1,141	63.9%	716	62.8%	534
Iowa Western	504	98	98	700	49.8%	387	55.3%	238
Southwestern	76	36	43	155	46.7%	78	50.3%	72
Indian Hills	231	47	151	429	59.8%	221	51.5%	116
Southeastern	513	119	30	662	60.1%	384	58.0%	259
TOTAL	5,860	1,473	5,045	12,378	69.7%	7,773	62.8%	5,453
% of TOTAL	47.3	11.9	40.8	100.0	—	62.8	—	44.1

- 1 Educational Functioning Level Gains—Participants with at least 40+ hours of instruction and post-test with a gain, sufficient to transition to the next level of instruction (reflected as a one to two grade level equivalency gain).
- 2 ABE (Adult Basic Education)—includes grade levels 00-08.
- 3 ASE (Adult Secondary High)—includes grade levels 09-12. ASE High is not a negotiated target—post testing is achieved through HSED completion.
- 4 ESL (English as a Second Language)—includes grade levels 00-08.
- 5 Participant Rate—determined by dividing Eligible Individuals (Table 2a) by those who are enrolled as Participants (attended 12+ hours).
- 6 Post Test Rate—determined by dividing by numbers posted tested with those who achieved a Skill Gain.
- 7 Skill Gains—determined by post-testing and achieving a sufficient score to move to the next educational functioning level (http://www.nrsweb.org/docs/efl_descriptors.doc)

CHART 3A. AEL PARTICIPANT COMPARISON: FY15 AND FY16

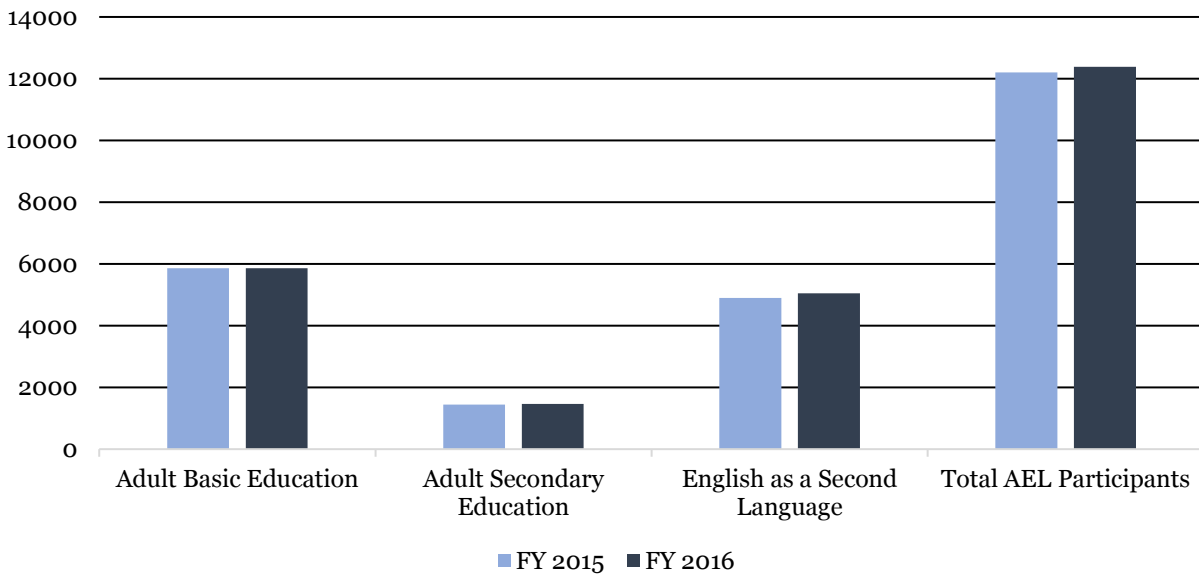


TABLE 5B AEL EDUCATIONAL FUNCTIONING LEVEL GAINS¹ BY COLLEGE: FY15

College	Adult Basic Education ²	Adult Secondary Education ³	English as a Second Language ⁴	Total Participants	Participant Rate ⁵	Total Post Tested	Post-Test Rate ⁶	Total Skill Gains ⁷
Northeast Iowa	137	29	57	223	51.7%	80	35.9%	52
North Iowa Area	147	43	43	233	50.7%	158	67.8%	142
Iowa Lakes	70	26	50	146	68.9%	96	65.8%	66
Northwest Iowa	95	23	91	209	72.6%	110	52.6%	66
Iowa Central	569	108	373	1,050	72.1%	608	57.9%	452
Iowa Valley	170	52	300	522	76.3%	357	68.4%	283
Hawkeye	285	103	416	804	79.8%	602	74.9%	446
Eastern Iowa	708	169	265	1,142	63.0%	792	69.4%	665
Kirkwood	553	189	519	1,261	45.7%	651	51.6%	389
Des Moines Area	1,507	279	1,674	3,460	89.8%	2,413	69.7%	1,512
Western Iowa Tech	292	73	740	1,105	76.8%	681	61.6%	518
Iowa Western	476	100	120	696	51.6%	437	62.8%	315
Southwestern	84	24	37	145	45.7%	75	51.7%	62
Indian Hills	258	59	164	481	61.8%	282	58.6%	167
Southeastern	508	168	50	726	73.9%	378	52.1%	235
TOTAL	5,859	1,445	4,899	12,203	68.5%	7,720	63.3%	5,370
% of TOTAL	48.0	11.8	40.1	100.0	—	63.3	—	44.0

- 1 Educational Functioning Level Gains—Participants with at least 40+ hours of instruction and post-test with a gain, sufficient to transition to the next level of instruction (reflected as a one to two grade level equivalency gain).
- 2 ABE (Adult Basic Education)—includes grade levels 00-08.
- 3 ASE (Adult Secondary High)—includes grade levels 09-12. ASE High is not a negotiated target—post testing is achieved through HSED completion.
- 4 ESL (English as a Second Language)—includes grade levels 00-08.
- 5 Participant Rate—determined by dividing Eligible Individuals (Table 2a) by those that are enrolled as Participants (attended 12+ hours).
- 6 Post Test Rate—determined by dividing by numbers posted tested with those that achieved a Skill Gain.
- 7 Skill Gains—determined by post-testing and achieving a sufficient score to move to the next educational functioning level (http://www.nrsweb.org/docs/efl_descriptors.doc)

CHART 3B. AEL POST-TEST RATE COMPARISON: FY15 AND FY16

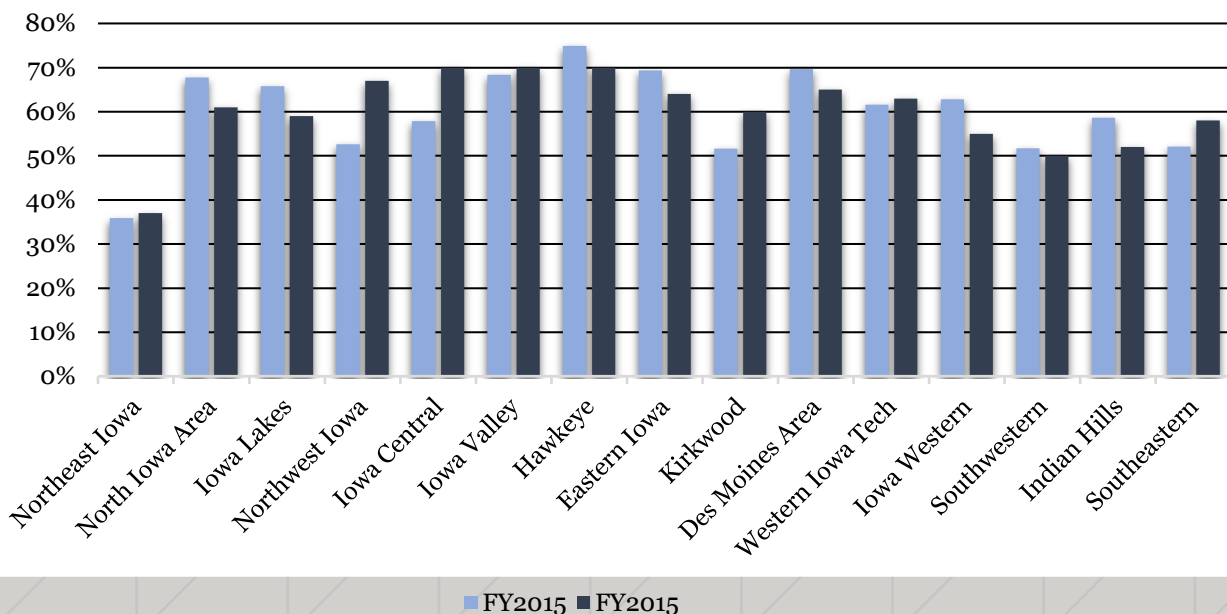
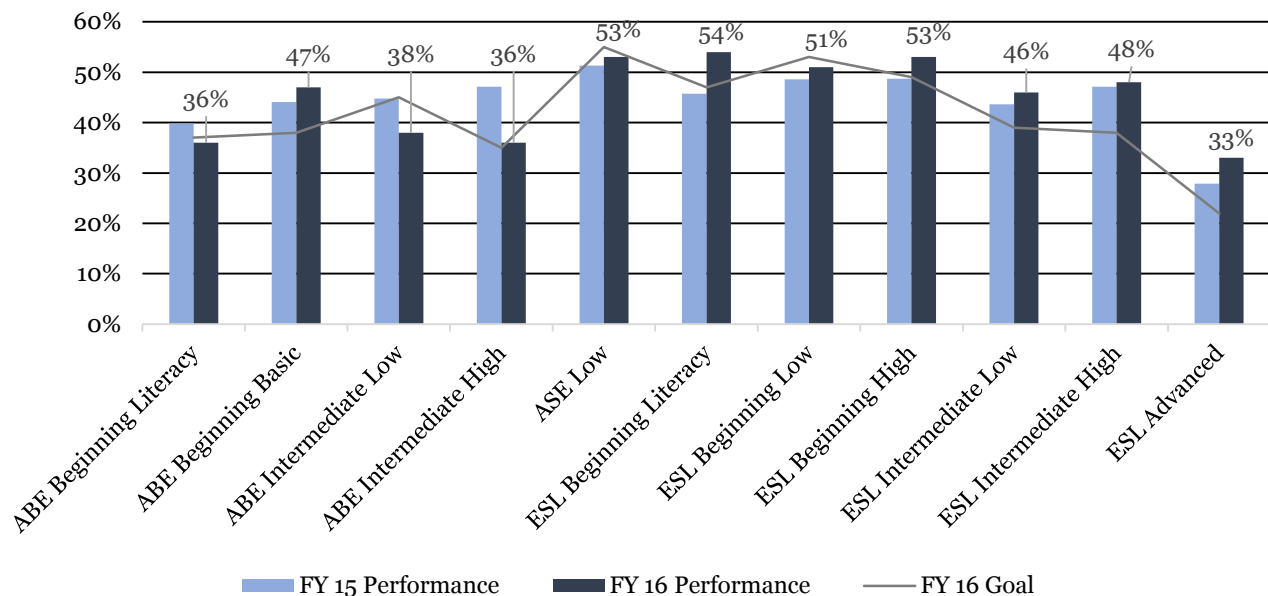


TABLE 6: AEL PERFORMANCE¹ SUMMARY OF COMPLETERS BY LEVEL: FY16

	Total Completers FY16	% Completers FY16	% State Targets FY16	Total Completers FY15	% Completers FY15	% State Targets FY15
ABE Beginning Literacy	78	36	37	98	39.8	34
ABE Beginning Basic	361	47	38	338	44.1	33
ABE Intermediate Low	645	38	45	706	44.8	32
ABE Intermediate High	1,150	36	35	1,298	47.1	26
ABE² Subtotal	2,234	—	—	2,440	—	—
ASE Low	562	53	55	517	51.3	38
ABE High ³	268	—	—	248	—	—
ASE⁴ Subtotal	830	—	—	765	—	—
ESL Beginning Literacy	218	54	47	162	45.7	38
ESL Beginning Low	288	51	53	271	48.6	47
ESL Beginning High	616	53	49	550	48.7	42
ESL Intermediate Low	611	46	39	572	43.6	37
ESL Intermediate High	452	48	38	437	47.1	32
ESL Advanced	204	33	22	173	27.9	20
ESL⁵ Subtotal	2,389	—	—	2,165	—	—
TOTAL	5,453	44.0		5,370	44.0	

- 1 Performance—Measured by Skill Gains against federally negotiated targets for the state. Benchmarks met are highlighted.
- 2 ABE (Adult Basic Education)—Includes grade levels 00-08.
- 3 ASE High is not a negotiated target—Post-testing is achieved through HSED completion.
- 4 ASE (Adult Secondary High)—Includes grade levels 09-12.
- 5 ESL (English as a Second Language)—Includes grade levels 00-08.

CHART 4. AEL PERFORMANCE SUMMARY BY LEVEL: FY15 AND FY16



THIS PAGE WAS INTENTIONALLY LEFT BLANK



COMMUNITY COLLEGES & WORKFORCE PREPARATION

PROSPERITY THROUGH EDUCATION

The Division of Community Colleges and Workforce Preparation within the Iowa Department of Education administers a variety of diverse programs that enhance Iowa's educational system and help to prepare a skilled and knowledgeable workforce. Divided between two bureaus — the Bureau of Community Colleges and the Bureau of Career and Technical Education — the division is committed to providing and supporting opportunities for lifelong learning. In addition to working with Iowa's 15 public community colleges on state accreditation, program approval, equity review, and data reporting, guidance is also provided in the areas of career and technical education, workforce training and economic development, adult education and literacy, military education, the state mandated OWI education program, the GAP Tuition and PACE programs, Senior Year Plus, the National Crosswalk Service Center, and the Statewide Intermediary Network program.