

CEDS Version 4 introduced a common data vocabulary for defining rubrics in a data system. The CEDS elements support digital representations of both holistic and analytic rubrics.

### Scope

Consider the following examples:

|                           |   |
|---------------------------|---|
| <b>Rubric Title</b>       | Project Rubric (holistic)   |
| <b>Rubric Description</b> | This rubric is used to evaluate the student's performance on the project and the quality of the final result. |

| Rubric Criterion Level Quality | Rubric Criterion Level Score | Rubric Criterion Level Description  |
|--------------------------------|------------------------------|---|
| Proficient                     | 3 points                     | The student's project has a hypothesis, a procedure, collected data, and analyzed results. The project is thorough and the findings are in agreement with the data collected. There are minor inaccuracies that do not affect the quality of the project.   |
| Adequate                       | 2 points                     | The student's project may have a hypothesis, a procedure, collected data, and analyzed results. The project is not as thorough as it could be; there are a few overlooked areas. The project has a few inaccuracies that affect the quality of the project. |
| Limited                        | 1 point                      | The student's project may have a hypothesis, a procedure, collected data, and analyzed results. The project has several inaccuracies that affect the quality of the project.  |

**Figure 1** | Example project rubric with CEDS elements

|                           |   |
|---------------------------|---|
| <b>Rubric Title</b>       | Project Rubric (analytic)   |
| <b>Rubric Description</b> | This rubric is used to evaluate the student's performance on the project and the quality of the final result. |

| Criteria   | Weight | Levels                            |   |  |  |
|--|--------|-----------------------------------|---|--|--|
|  |        | 4 Points                          | 3 Points  | 2 Points                               | 1 Point                                      |
| <b>Has a plan for Investigation</b><br>The student turns in a written plan for investigation.  | 1      | The plan is thorough              | The plan is a few details                       | details                                | limited                                      |
| <b>Use of Materials</b><br>The student manages materials responsibly.  | .5     | Manages all materials responsibly | Uses the materials responsibly most of the time | Mishandles some of the materials       | Does not use materials properly              |
| <b>Collects the Data</b><br>The student collects a sufficient number of data points to support the investigation and accurately records the data points. |        |                                   | data  | Major portions of the data are missing | The data collection consists of a few points |

Figure 2 | Example project rubric with CEDS elements

## Connections

The following CEDS Connections are available:

| Connection              | URL   |
|-------------------------|---|
| Rubric Elements in CEDS | <a href="https://ceds.ed.gov/connectReport.aspx?uid=503">https://ceds.ed.gov/connectReport.aspx?uid=503</a> |

(Other Connections may be developed from time to time. Please visit <http://ceds.ed.gov> for more information.)

## Logical Model

CEDS provides a logical model showing the relationships between data elements as they might exist in an operational data store (a database designed to integrate data from multiple sources for additional operations on the data). The reference model shows both the definition of a rubric and use of a rubric for scoring an assessment item:

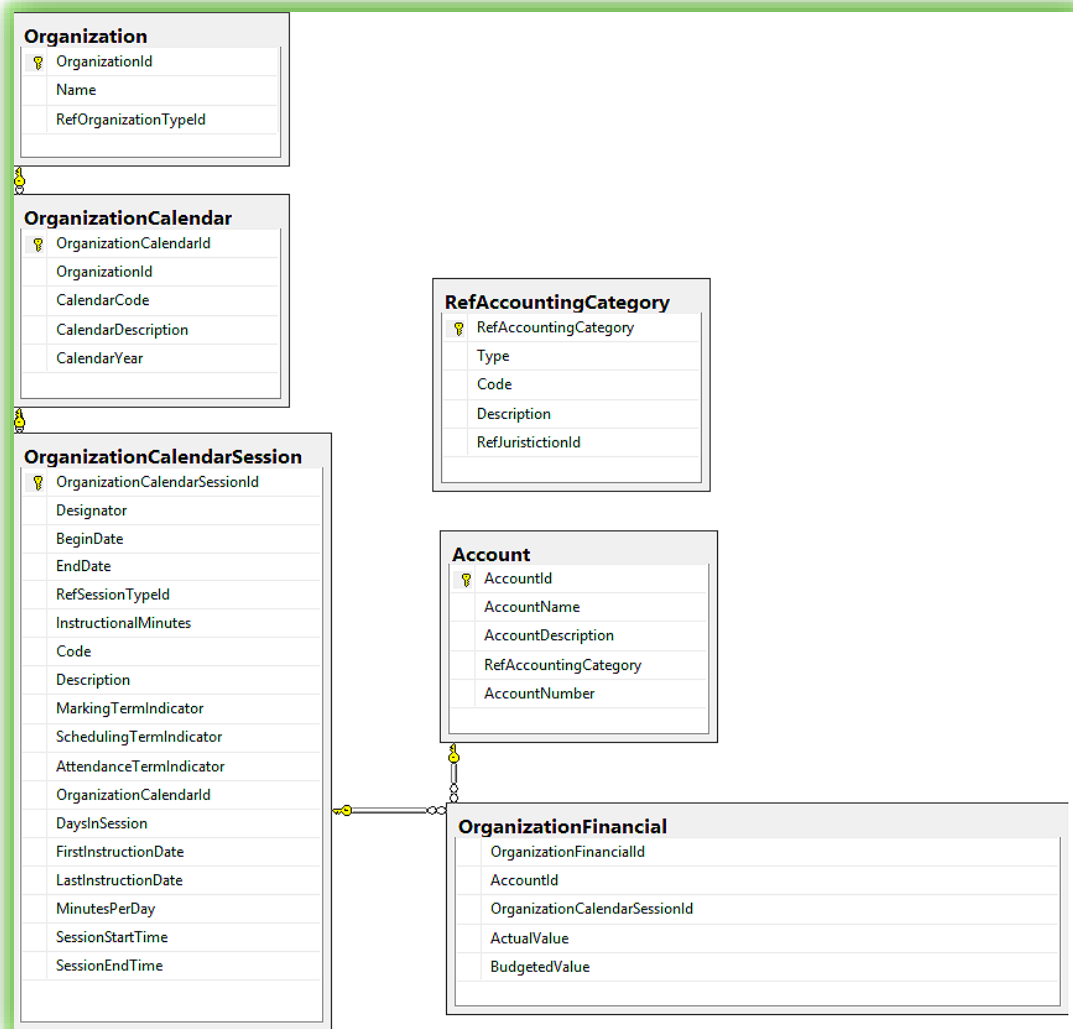


Figure 3 | Financial Data Model

## References

1. Model informed by *An Ontology for Open Rubric Exchange on the Web*, Brian Panuilla, Megan Kohler (cc)
2. Examples adapted from <http://www2.gsu.edu/~mstnrhx/457/rubric.htm>