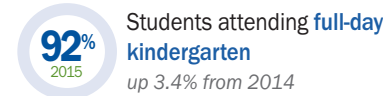
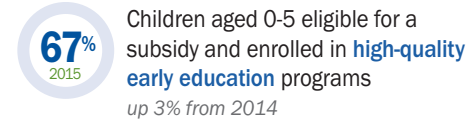
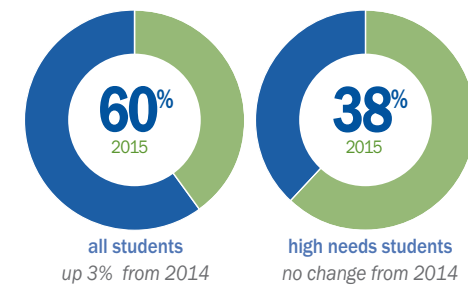


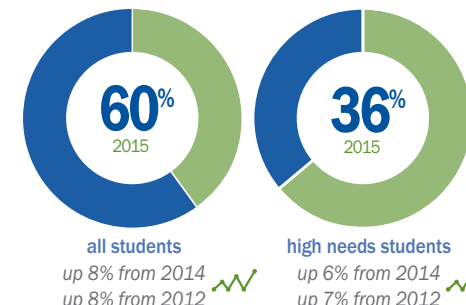
Readiness & Early Learning

Children's first few years are characterized by enormous cognitive, social, and emotional growth. Quality early learning experiences create a strong foundation for future success and are linked to improved academic performance. Critical factors include ensuring access to high-quality early education and care, assessing school readiness, and providing full-day kindergarten to ensure all children are on track to be proficient readers by third grade.

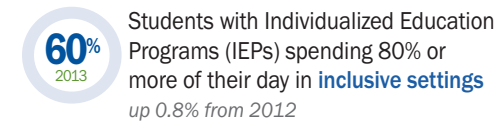
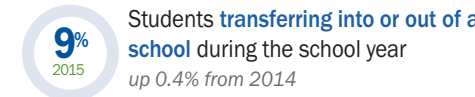


Performance & Engagement

Massachusetts has earned a reputation as a national leader in education by setting high expectations and promoting rigorous content standards and aligned assessments. Equally important is an emerging commitment to support strategies that allow all students to focus on learning challenging content. This means creating inclusive school and classroom settings that promote academic achievement, while attending to the needs of the Commonwealth's most at-risk populations.

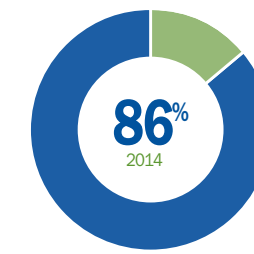


STEM Students scoring proficient or advanced on the 8th grade math MCAS

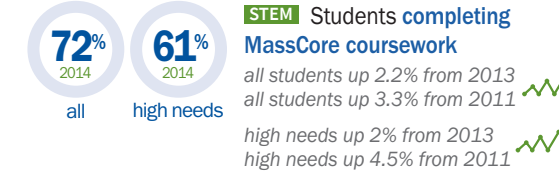


Preparation & Transitions

A high school diploma must constitute a range of learning experiences that ensure college and career readiness. Critical steps include completion of ninth grade coursework and mastery of a rigorous program of study. Steps must also be taken to prevent students from dropping out, as well as to reengage and recover youth disconnected from school and/or employment to ensure future learning and success.

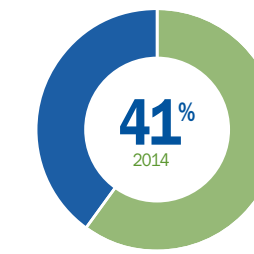


Students graduating from high school in four years up 1.1% from 2013

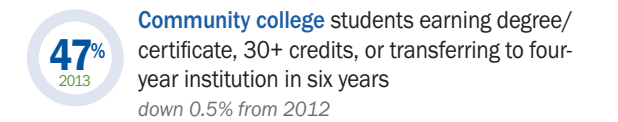
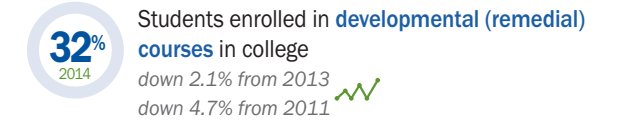


Progress & Attainment

Today's knowledge economy has set an expectation for students to complete a postsecondary degree or credential. However, a substantial number of high school graduates remain unprepared for college coursework and place into developmental (remedial) courses at college entry. Ensuring completion of academic programs at two- and four-year institutions, while providing students with marketable skills—especially in the STEM and health fields—is important to sustaining our economic productivity.



Massachusetts adults with a bachelor's degree or higher up 1% from 2013



birth through third grade

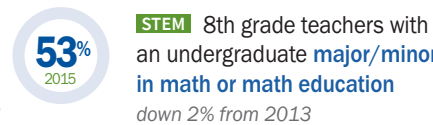
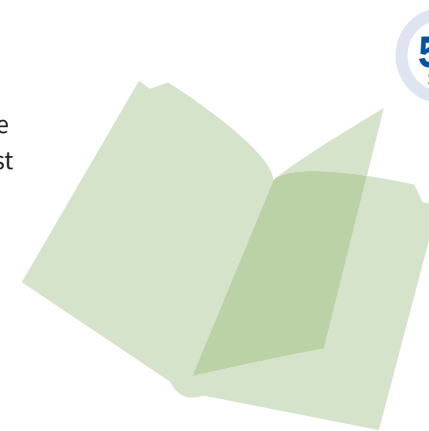
fourth grade through eighth grade

ninth grade through high school graduation

postsecondary to career

Prepared & Effective Educators

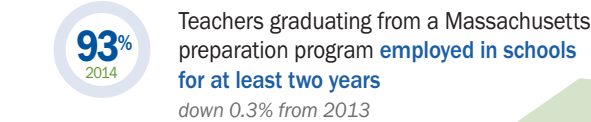
To accomplish its goals for education, the Commonwealth needs a well-prepared and effective educator workforce. This includes strong preparation and appropriate credentials for school leaders and teachers, including those educating our youngest learners and special needs students. Educators must demonstrate significant content knowledge and engage in evaluation processes that allow for continuous improvement in their craft.



Data not yet available Teachers evaluated as proficient or exemplary



License waivers issued are for special education positions down 3.3% from 2014



NOTES

All indicators refer to students in Massachusetts public education systems, unless otherwise noted. **High needs students:** "High needs" is defined by the Massachusetts Department of Elementary and Secondary Education as all students belonging to the following subgroups: low-income, students with disabilities, English language learner/former English language learner.

STEM Science, technology, engineering and mathematics (STEM) related indicators.

▲ Trend data highlighted.

DATA SOURCES

Massachusetts Department of Early Education and Care; Massachusetts Department of Elementary and Secondary Education; Massachusetts Department of Higher Education; United States Census Bureau: American Community Survey; United States Department of Education: Integrated Postsecondary Education Data System.

SUGGESTED CITATION

Rennie Center for Education Research & Policy. (2016). *Condition of Education in the Commonwealth: 2016 Data Report*. Boston, MA.



Condition of Education

IN THE COMMONWEALTH

2016 DATA REPORT

ADVISORY COMMITTEE MEMBERS

The Rennie Center would like to thank members of the Condition of Education in the Commonwealth Advisory Committee for their support and guidance in the development of this data report. The Advisory Committee plays a critical role in helping the Rennie Center team identify important transitions in student learning (and representative data points), as well as investigate policy solutions that may lead to improved educational outcomes. This work requires careful reflection and candid conversation on current progress and the goals the Condition of Education project ultimately hopes to achieve. Moving forward, the Rennie Center will continue to draw on the Advisory Committee’s expertise to update and refine our data report to capture the full range of learning experiences that define a successful education.

Beth Anderson Phoenix Charter Academy Network	Audrea Kelley Quincy College	Carlos Santiago Department of Higher Education
Wendi Bandi Fall River Public Schools	Liam Kerr Democrats for Education Reform	Chris Smith Boston After School & Beyond
Noah Berger Massachusetts Budget and Policy Center	Natalie Lacireno-Paquet WestEd	Scott Solberg Boston University School of Education
Marybeth Campbell SkillWorks, The Boston Foundation	Edward Liu Boston Teacher Residency	Susan Therriault American Institutes for Research
JD Chesloff Massachusetts Business Roundtable	Susan Lovelace National Center on Time & Learning	Paul Toner Massachusetts Education Partnership
Mitchell Chester Department of Elementary and Secondary Education	Amy O’Leary Strategies for Children/ Early Education for All	Joan Wasser Gish Boston College Lynch School of Education
Eric Conti Burlington Public Schools	Jake Murray Boston University School of Education	Tom Weber Department of Early Education and Care
John D’Auria Teachers21	Linda Noonan Massachusetts Business Alliance for Education	Abby Weiss Jumpstart
Ben Forman MassINC	Alice Peisch Massachusetts House of Representatives	Marty West Harvard Graduate School of Education
Debra Gatley Dedham Public Schools	Laura Perille EdVestors	Jonathan Zaff America’s Promise Alliance
Linda Hanson Arlington Public Schools		
Jason Irizarry University of Massachusetts		

RENNIE CENTER BOARD OF DIRECTORS

Maura Banta, IBM Corporation
Laurie Brennan, TERC
Celine Coggins, Teach Plus
Pendred Noyce, The Noyce Foundation, Board of Elementary and Secondary Education
Paul Reville, Harvard Graduate School of Education
Robert Schwartz, Harvard Graduate School of Education

This Data Report is generously supported by

Barr Foundation
Noyce Foundation
Irene E. and George A. Davis Foundation
IBM Corporation

www.renniecenter.org

ADDITIONAL INFORMATION

All indicators refer to students in Massachusetts public education systems, unless otherwise noted. Additional information is provided below for indicators where definitions and collection methods are not self-evident.

Readiness & Early Learning

Children aged 0-5 eligible for a subsidy and enrolled in high-quality early education programs: defined as percent of children aged 0-5 eligible for financial assistance provided through the Massachusetts Department of Early Education and Care enrolled in high-quality early education programs, defined as self-assessed at a QRIS level 2 or above.

Some indicators in this area were not included—such as child well-being (social-emotional health) and kindergarten entry assessment outcomes—due to lack of statewide data availability at the time of publication, but may be included in future iterations of the report.

Performance & Engagement

Students transferring into or out of a school during the school year. This indicator is the statewide “churn rate,” representing students enrolled in public schools that are not reported as enrolled in the same school throughout the year. This is one of multiple measures used to assess student mobility.

Students absent from school 10% or more of days enrolled. This indicator is commonly referred to as the “chronic absence” or “chronic absenteeism” rate.

Students with Individualized Education Programs (IEPs) spending 80% or more of their day in inclusive settings: defined as percent of students aged 6-21 with Individualized Education Programs (IEPs) who are served inside a general education classroom 80% or more of the day. An IEP is a legal document mandated by the federal Individuals with Disabilities Education Act that defines a specialized set of education services provided to a student with a disability, including all students with a special education designation.

Some indicators in this area were not included—such as participation in after- and out-of-school time programs—due to lack of statewide data availability at the time of publication, but may be included in future iterations of the report.

Preparation & Transitions

Students passing all 9th grade courses: defined as percent of students in grade 9 taking and passing all of their coursework. Students were considered “passing” a course if they received a letter mark of D- or higher; a categorical mark of passing, minimally acceptable, acceptable, good or outstanding; a numeric mark of 59.5 or higher; or received full credit in a credit-bearing course.

Students completing MassCore coursework. The Massachusetts High School Program of Studies (MassCore) recommends a comprehensive program of studies for students to complete before graduating from high school. The program includes: four years of English, four years of mathematics, three years of lab-based science, three years of history, two years of the same foreign language, one year of arts, and five additional courses. MassCore also includes additional learning opportunities, such as Advanced Placement classes, dual enrollment, a senior project, online courses for high school or college credit, and service or work-based learning.

Youth aged 16–24 neither in school nor employed. These youth, often referred to as “disconnected” or “opportunity” youth, may or may not have completed a high school diploma or General Educational Development (GED) credential. They also may or may not have enrolled in and attended a postsecondary education institution at some point.

Some indicators in this area were not included—such as high-level math/science course-taking, service-learning participation—due to lack of statewide data availability at the time of publication, but may be included in future iterations of the report.

Progress & Attainment

Massachusetts adults with a bachelor’s degree or higher: defined as percent of all adults in Massachusetts aged 25 and over with a bachelor’s degree, graduate degree, professional, or doctoral degree. This indicator is often referred to as the “educational attainment rate.”

Students enrolled in developmental (remedial) courses in college: defined as percent of all first-time, full-time, degree-seeking students who graduated from a Massachusetts public high school the previous year and who enrolled in at least one developmental (remedial) course when enrolling at a Massachusetts public institution of higher education (a community college, state university, or University of Massachusetts). Developmental courses are designed to prepare students for college-level work and do not count toward a degree. Students typically enroll in these courses based on placement exam performance.

Community college students earning a degree/certificate, 30+ credits, or transferring to four-year institution in six years: defined as percent of first-time, degree-seeking Massachusetts community college students who, within six years of initial enrollment, earn an associate’s degree or certificate, transfer to a four-year institution, or are still enrolled with at least 30 credits earned. This indicator represents a Six-Year Community College Student Success Rate, developed by the Achieving the Dream state data team in consultation with Jobs for the Future.

Students graduating from UMass and state universities within six years: defined as percent of all first-time, full-time, bachelor’s degree-seeking students graduating from the University of Massachusetts or state universities within six years of initial enrollment.

Some indicators in this area were not included—such as career/workforce experience and labor market outcomes for graduates of institutions of higher education—due to lack of statewide data availability at the time of publication, but may be included in future iterations of the report.

Prepared & Effective Educators

Teachers evaluated as proficient or exemplary: defined as percent of all K-12 educators achieving proficient or exemplary rating on the Massachusetts Framework for Educator Evaluation.

Early and out-of-school time educators with a bachelor’s degree or higher: defined as percent of all educators in family, small group and school age, and large group and school age child care with a bachelor’s degree, graduate degree, professional, or doctoral degree who self-report in the Professional Qualifications Registry (PQ Registry). All educators, including assistants, working in child care settings licensed by the Massachusetts Department of Early Education and Care are required to register with the PQ Registry.

License waivers issued are for special education positions: defined as percent of all license waivers issued are for special education positions. For all open educator positions, a school district must demonstrate a “good faith” effort to hire a licensed educator. If a district experiences a “great hardship” in securing a qualified candidate, a superintendent may apply for a waiver from the Commissioner. The first waiver exempts the district for one school year from the requirement to employ licensed personnel for an open position. For any subsequent waivers, the district must document the educator employed is making significant progress toward meeting the requirements for licensure in the field in which they are employed.

8th grade math teachers with an undergraduate major/minor in mathematics, mathematics education or other mathematics: defined as self report of whether there was an emphasis on mathematics as part of their undergraduate coursework; other mathematics is defined as related subjects such as statistics or physics.

Some indicators in this area were not included—such as information about administrators and non-teachers school-based staff—due to lack of statewide data availability at the time of publication, but may be included in future iterations of the report.

For more information please see the 2016 Condition of Education Resource Guide on our website: <http://renniecenter.org/research/COE2016ResourceGuide.pdf>