

## Steady Stream of High School Graduates Enter B.C. Public Post-Secondary Education for the First Time Each Year

The Student Transition Project (STP) has collected eleven years of grade 12 and post-secondary enrollment data, since its inception in 2003. This information is used to track student transitions from grade 12 graduation into post-secondary education, student mobility between post-secondary institutions and post-secondary credential completions.

Each year, the STP provides a Student Transitions Matrix<sup>1</sup> showing the number and proportion of students who first enroll in the B.C. public post-secondary education system in each academic year after grade 12 graduation (see **Figure 1**). This matrix also provides the cumulative proportion of each graduation cohort that enrolled in a B.C. public post-secondary institution within one, two, three or as many as ten years.

While the majority of students (50% to 53%) who enroll in the B.C. public post-secondary education system do so

immediately after grade 12 graduation, a further 10% to 12% enroll after one year, 5% wait two years and then in each subsequent year, a progressively smaller proportion of students (3% or fewer) enroll. The STP continues to measure and report these rates every year for planning purposes.

Nearly 78% of B.C. grade 12 graduates from the 2002/2003 graduation cohort enrolled in B.C. public post-secondary education within ten years of graduation (by academic year 2012/2013). Previous research has shown that roughly 6% of grade 12 graduates enroll in B.C. private institutions and other public and private institutions outside of B.C. within one year of grade 12 graduation. Therefore, it is estimated that at least 85% of the grade 12 graduates of 2002/03 have enrolled in some post-secondary education by 2012/2013.

**Figure 1: Student Transition Matrix – Number of Student Transitions from Grade 12 Graduation to B.C. Public Post-Secondary Education in Each Academic Year**

Grade 12 Grad Year	Post-Secondary School Year											No Transition (Yet)	Grand Total Gr12 Grads	Cumulative Transition Rate
	2003/2004	2004/2005	2005/2006	2006/2007	2007/2008	2008/2009	2009/2010	2010/2011	2011/2012	2012/2013				
2002/2003	<b>22,670</b> 51.1%	4,904 11.1%	2,152 4.9%	1,220 2.8%	978 2.2%	801 1.8%	579 1.3%	459 1.0%	362 0.8%	289 0.7%	9,919 22.4%	<b>44,333</b> 100.0%	(10 years) <b>77.6%</b>	
2003/2004		<b>21,091</b> 49.8%	4,578 10.8%	1,960 4.6%	1,234 2.9%	1,023 2.4%	787 1.9%	579 1.4%	400 0.9%	314 0.7%	10,364 24.5%	<b>42,330</b> 100.0%	(9 years) <b>75.5%</b>	
2004/2005			<b>21,869</b> 50.1%	4,755 10.9%	2,127 4.9%	1,335 3.1%	993 2.3%	782 1.8%	596 1.4%	405 0.9%	10,798 24.7%	<b>43,660</b> 100.0%	(8 years) <b>75.3%</b>	
2005/2006				<b>22,768</b> 50.7%	4,919 11.0%	2,253 5.0%	1,364 3.0%	968 2.2%	749 1.7%	501 1.1%	11,385 25.4%	<b>44,907</b> 100.0%	(7 years) <b>74.6%</b>	
2006/2007					<b>22,341</b> 51.5%	4,885 11.3%	2,120 4.9%	1,299 3.0%	954 2.2%	625 1.4%	11,144 25.7%	<b>43,368</b> 100.0%	(6 years) <b>74.3%</b>	
2007/2008						<b>23,220</b> 52.1%	5,205 11.7%	2,064 4.6%	1,180 2.7%	838 1.9%	12,020 27.0%	<b>44,527</b> 100.0%	(5 years) <b>73.0%</b>	
2008/2009							<b>23,974</b> 53.6%	4,701 10.5%	1,985 4.4%	1,143 2.6%	12,905 28.9%	<b>44,708</b> 100.0%	(4 years) <b>71.1%</b>	
2009/2010								<b>24,251</b> 52.8%	4,776 10.4%	1,940 4.2%	14,957 32.6%	<b>45,924</b> 100.0%	(3 years) <b>67.4%</b>	
2010/2011									<b>24,141</b> 53.0%	4,512 9.9%	16,871 37.1%	<b>45,524</b> 100.0%	(2 years) <b>62.9%</b>	
2011/2012										<b>24,312</b> 52.5%	21,961 47.5%	<b>46,273</b> 100.0%	(1 years) <b>52.5%</b>	

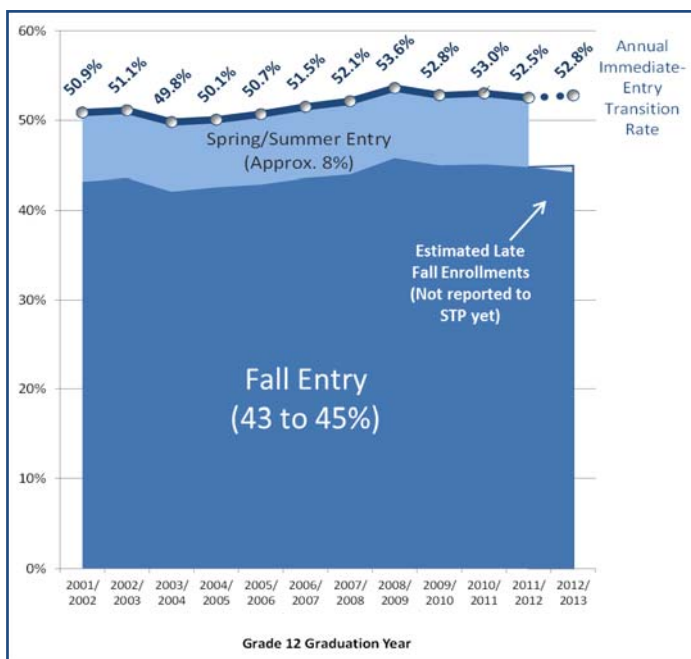
1. The Student Transitions Matrix provides the number of grade 12 graduates and the % of the graduation cohort who enrolled in B.C. public post-secondary education for the first time, by year of first entry to B.C. public post-secondary education. It includes enrolment in academic, developmental, continuing education or Adult Basic Education programs/courses in B.C. public post-secondary institutions. These matrices are also available for each of the regions in B.C. on the STP public web site at:

Inside This Newsletter	Page
• Steady Stream of High School Graduates Enter B.C. Public Post-Secondary Education for the First Time Each Year	1
• Immediate-Entry Transition Rate Remains at 53%	2
• More Students Enroll Immediately in Post-Secondary as Fewer Students Delay Their Entry	2
• Strong Growth in Trades and Technology Program Areas	3
• Trades and Technology Programs Attract One-Third of Immediate Entry Students	4
• Growth in Health Programs is Strong	5
• Student Transitions by Demographic Characteristics	6
• Transition Rates by Region and School District	7,8

### Immediate-Entry Student Transition Rate Remains Stable at 53%

The immediate-entry transition rate has remained around 53% for the last several cohorts of grade 12 graduates and is expected to remain unchanged for the 2012/2013 graduation cohort<sup>2</sup>. This represents an increase of two percentage points from ten years ago when 51% of the 2002/03 grade 12 graduation cohort enrolled in B.C. public post-secondary education within one year of grade 12 graduation. See **Figure 2**.

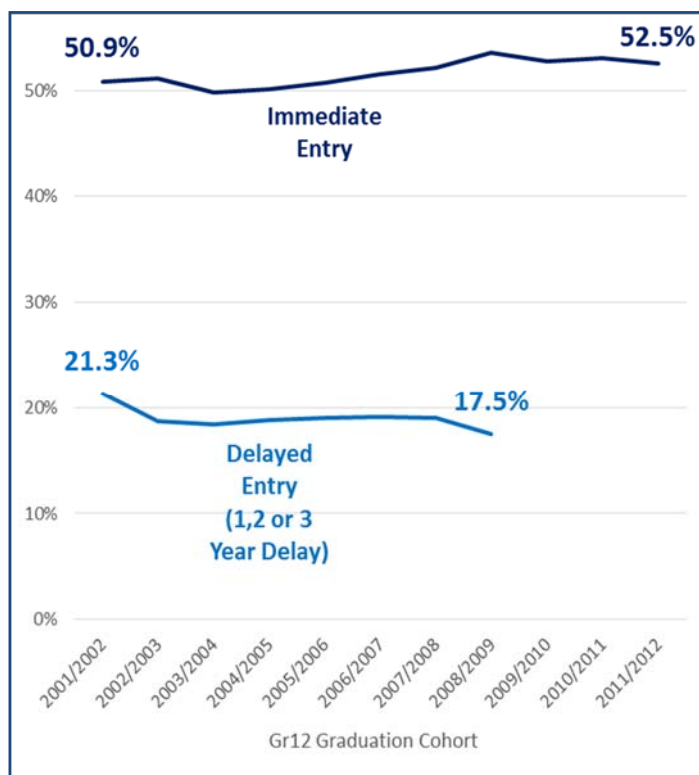
**Figure 2: Immediate-Entry Transition Rate to B.C. Public Post-Secondary Education, by Year of Grade 12 Graduation and Term of Entry**



### More Students Enrol Immediately in Post-Secondary as Fewer Students Delay Their Entry

Compared to a decade ago, a greater proportion of grade 12 graduates are now entering post-secondary education within a year of graduation (immediate-entry) and a smaller proportion are delaying their entry into post-secondary education by a year or more. See **Figure 3**.

**Figure 3: Trends in Immediate-Entry and Delayed-Entry Transition Rates to B.C. Public Post-Secondary Education, by Year of Grade 12 Graduation**



2. The proportion of grade 12 graduates who enrolled in post-secondary education in the Fall term has remained steady at 45% for the past five years, so it is expected that the annual immediate-entry transition rate will remain at 53% for the 2012/2013 grade 12 graduation cohort.

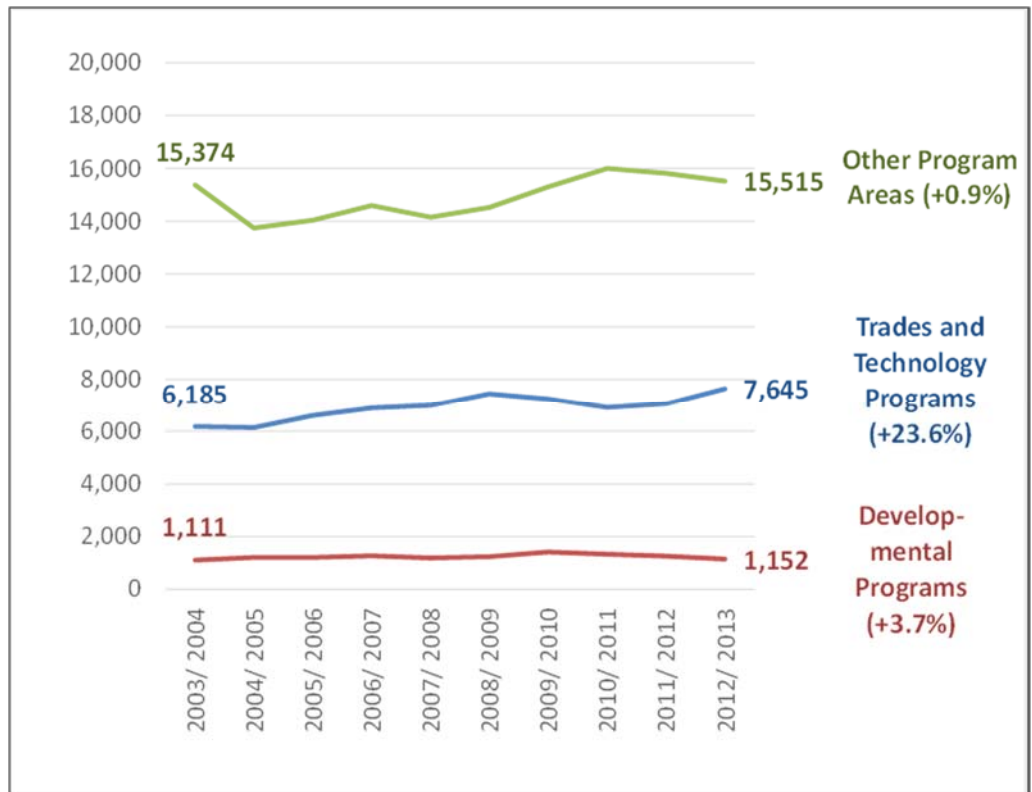
### Strong Growth in Trades and Technology Program Areas

Figure 4: Enrollment Trend: Immediate-Entry Students to B.C. Public Post-Secondary Programs

The Province of British Columbia is committed to ensuring that skills and training programs offered in B.C. lead to jobs of the future, especially in trades and technology fields. The Student Transitions Project is able to show that strong growth is occurring in these program areas, so it is expected that this enrollment growth will contribute to success in the workplace in the trades and technology fields.

While immediate-entry enrollment growth in all program areas across the B.C. public post-secondary system has increased 7.2% over the last ten years, the number of students enrolling directly in four trades and technology program CIP<sup>3</sup> clusters has increased by nearly 24% (Business and Management, Engineering and Applied Sciences, Health Programs and Trades); see **Figures 4 and 5**.

The trades and technology growth rate among immediate entry students has significantly outpaced the 1% immediate-entry growth in other program areas (Arts and Sciences, Education, Human and Social Services, Visual and Performing Arts, Personal Improvement and Leisure and Other Programs). However, enrollments in the Engineering and Applied Sciences and the Trades clusters have only recently returned to the 2003/04 levels.



3. Six-digit Classification of Instructional Program (CIP) Codes are used to identify the program destination of students enrolling in B.C. public post-secondary institutions in the STP. Aggregations at the 2-digit CIP level form BC CIP clusters in the four trades and technology clusters of interest: Business and Management, Engineering and Applied Sciences, Health and Trades.

Figure 5: Number of Students Entering Trades and Technical Programs,

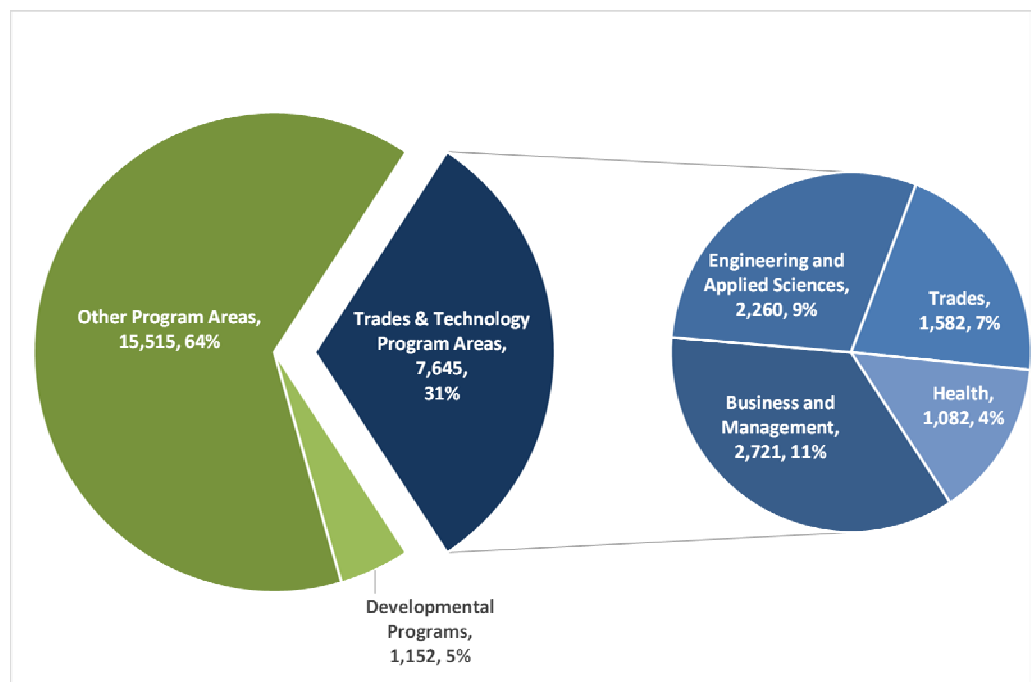
2-Digit Program	CIP	2-Digit CIP Description	Year of Immediate-Entry to Trades and Technical Programs in a B.C. Public Post-Secondary Institution									
			2003/2004	2004/2005	2005/2006	2006/2007	2007/2008	2008/2009	2009/2010	2010/2011	2011/2012	2012/2013
<b>Business and Management</b>			<b>1,980</b>	<b>2,066</b>	<b>2,365</b>	<b>2,499</b>	<b>2,452</b>	<b>2,802</b>	<b>2,462</b>	<b>2,494</b>	<b>2,716</b>	<b>2,721</b>
	52.	Business, management, marketing and related support services	1,980	2,066	2,365	2,499	2,452	2,802	2,462	2,494	2,716	2,721
<b>Engineering and Applied Sciences</b>			<b>2,244</b>	<b>2,110</b>	<b>2,156</b>	<b>2,051</b>	<b>1,970</b>	<b>2,042</b>	<b>2,086</b>	<b>2,051</b>	<b>2,135</b>	<b>2,260</b>
	1.	Agriculture, agriculture operations and related sciences	102	99	67	81	57	62	50	69	77	89
	3.	Natural resources and conservation	140	115	83	128	120	126	136	155	187	183
	4.	Architecture and related services	<5		<5	<5	<5		<5	<5	<5	
	11.	Computer and information sciences and support services	752	751	804	598	555	514	502	456	411	583
	14.	Engineering	794	743	813	896	904	971	1,067	1,042	1,034	1,038
	15.	Engineering technologies and engineering-related fields	440	389	375	337	328	362	323	326	417	359
	41.	Science technologies/technicians	15	13	13	9	5	7	7	2	8	8
<b>Health</b>			<b>443</b>	<b>433</b>	<b>468</b>	<b>547</b>	<b>752</b>	<b>798</b>	<b>1,051</b>	<b>803</b>	<b>747</b>	<b>1,082</b>
	51.	Health professions and related programs	443	433	468	547	752	798	1,051	803	747	1,082
<b>Trades</b>			<b>1,518</b>	<b>1,533</b>	<b>1,623</b>	<b>1,799</b>	<b>1,822</b>	<b>1,812</b>	<b>1,658</b>	<b>1,570</b>	<b>1,465</b>	<b>1,582</b>
	12.	Personal and culinary services	355	367	371	316	338	335	330	317	297	280
	46.	Construction trades	265	276	372	448	545	551	527	484	456	536
	47.	Mechanic and repair technologies/technicians	555	524	482	637	520	541	476	488	424	448
	48.	Precision production	224	250	300	324	325	285	241	192	201	243
	49.	Transportation and materials moving	119	116	98	74	94	100	84	89	87	75
<b>Total B.C. Jobs Plan Target Programs</b>			<b>6,185</b>	<b>6,142</b>	<b>6,612</b>	<b>6,896</b>	<b>6,996</b>	<b>7,454</b>	<b>7,257</b>	<b>6,918</b>	<b>7,063</b>	<b>7,645</b>

Figure 5 Notes: (a) This table provides counts of immediate-entry students who enrolled in trades and technical program areas within one year of high school graduation. Some programs do not normally accept students directly from high school, such as architecture and science technologies/technicians. (b) A total of 166,000 post-secondary students were enrolled in trades and technology program areas in academic year 2012/2013, including 59,000 in Business and Management, 41,000 in Engineering and Applied Sciences, 34,000 in Health and 35,000 in Trades. Students may be enrolled in multiple program areas simultaneously. (c) For more information on the Classification of Instructional Program (CIP) codes and the specific programs within each 2-digit CIP, please refer to: <http://www.statcan.gc.ca/pub/12-590-x/12-590-x2012001-eng.pdf>. For example, construction trades (2-digit CIP 46) includes training for carpenters, electricians, roofers, glaziers, insulators, plumbers, masons, etc.

### Trades and Technology Program Areas Attracted Nearly One-Third of Immediate-Entry Students in 2012/2013

Among 2011/12 grade 12 graduates who enrolled immediately in B.C. public post-secondary education in 2012/2013, 31% enrolled in the one of the four trades and technology program areas, with Business and Management being the largest of these programs, attracting 11% of immediate-entry students and Health programs being the smallest, attracting 4% of immediate-entrants (see Figure 6).

Figure 6: Distribution of 2011/2012 Grade 12 Graduates into B.C. Public Post-Secondary Programs in 2012/2013, by Program Cluster



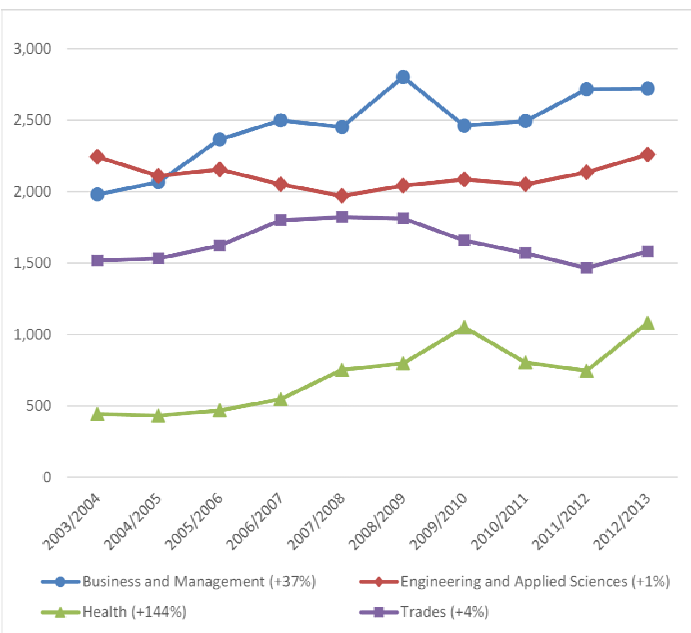
## Growth in Health Programs is Strong

A review of the ten-year immediate-entry enrollment trends in the four trades and technology program CIP clusters reveals that growth in health programs has been the greatest, increasing by 144% over the last decade and representing just 4% of immediate entrants to post-secondary programs in 2012/2013 (see **Figure 7**).

The largest trades and technology program area is Business and Management. This area of study attracted 11% of immediate entrants in the recent academic year and has grown by 37% over the last ten years.

Immediate-entry enrollment growth was not quite as strong in Trades (4%) and Engineering and Applied Sciences (1%). These two program areas attracted 7% and 9% of grade 12 graduates entering B.C. public post-secondary institutions in 2012/2013 directly after high school graduation.

**Figure 7: Enrollment Trends: Immediate-Entrants to Trades and Technology Programs in B.C. Public Post-Secondary Institutions, by B.C. Program CIP Cluster**



## Student Transition Rates by Demographic Characteristics

Each year the Student Transitions Project provides a summary of student transition rates by various student characteristics, such as gender, age, aboriginal status, school type, college region, and academic GPA. **Figure 8** on the following page provides this summary, along with trends for the last five years.

**Student Transitions Project (STP):** The Student Transitions Project is British Columbia's collaborative research project that measures student success from the K-12 to post-secondary systems. This effective system-wide partnership, involving B.C.'s education and advanced education ministries and public post-secondary institutions, is tracking student success by reporting on student transition rates to post-secondary education, student mobility among post-secondary institutions, and post-secondary completion and retention rates. STP is managed by a steering committee with representation from the two education ministries, public institutions and the B.C. Council on Admissions and Transfer (BCCAT).

### STP Steering Committee Members:

- Robert Adamoski*, Chair, STP Steering Committee and Associate Director, Admissions and Research, BCCAT.
- Brian Beacham*, Director, Institutional Research, Vancouver Community College.
- Naomi Pope*, Director, Research & Analysis, Ministry of Advanced Education, Innovation and Technology
- Claire Miller*, Director, Knowledge Management Branch, Knowledge Management and Accountability Division, Ministry of Education.
- Walter Sudmant*, Director, Planning and Institutional Research, University of British Columbia.

**Special Thanks:** The STP would like to thank the Ministry of Education, the Ministry of Advanced Education, Innovation and Technology and the B.C. public post-secondary institutions for collaborating in this research effort. Without their co-operation and data contributions, this research could not have been accomplished.

The following B.C. public post-secondary institutions are included in this study and grouped by institution designation in 2009/10:

- Community Colleges**– Camosun College, College of New Caledonia, College of the Rockies, Douglas College, Langara College, North Island College, Northern Lights College, Northwest Community College, Okanagan College, Selkirk College, Vancouver Community College.
- Institutes**– British Columbia Institute of Technology, Justice Institute of British Columbia, Nicola Valley Institute of Technology
- Teaching-Intensive Universities** – Capilano University, Emily Carr University of Art + Design, Kwantlen Polytechnic University, Royal Roads University, Thompson Rivers University, Vancouver Island University, University of the Fraser Valley.
- Research-Intensive Universities** – Simon Fraser University, University of British Columbia (including University of British Columbia, Okanagan), University of Northern British Columbia, University of Victoria.

**Where to find more information:** A wealth of additional information is also available to post-secondary institutions seeking more detailed information on student transitions specific to their region or institution.

STP Highlights newsletters and reports are available on the public Student Transitions Project web site at:

[http://www.aved.gov.bc.ca/student\\_transitions](http://www.aved.gov.bc.ca/student_transitions)

**Newsletter Prepared by**  
*Joanne Heslop, Manager, Student Transitions Project*



### Immediate-Entry Transition Rates, by Region, School Type and School District

Immediate-entry transition rates from high school graduation into B.C. public post-secondary education have shown general improvement across most regions and school districts in the province. **Figure 9** provides immediate-entry transition rates by region of graduation, school type (public or independent) and school district.

**Figure 9: Immediate-Entry Student Transition Rates by Region of Graduation, School Type and School District: Grade 12 Graduates of 2007/08 to 2010/11**

Region of Grade 12 Graduation				Immed-Entry Trans. Rate by Gr12 Grad Year					5-Yr Change~			# Grads in	
College Region of Gr12 Graduation	School Type	School District		2007/2008	2008/2009	2009/2010	2010/2011	2011/2012	Trans % Trend	Trans %	# Trans.	# Grads	2011/2012
Camosun	BC Public	061	Greater Victoria	48%	50%	52%	49%	49%		1%	+170	+298	1,579
		062	Sooke	37%	36%	39%	35%	41%		15%	+40	+56	566
		063	Saanich	50%	50%	48%	51%	49%		-2%	-16	-29	680
		064	Gulf Islands^	40%	26%	29%	22%	41%		-9%	-5	-15	103
	All BC Public Schools in Region			46%	46%	48%	46%	48%		2%	+195	+315	2,946
	All BC Independent Schools in Region			39%	49%	45%	47%	45%		17%	+38	+25	431
All BC Public & Independent Schools in Region				45%	46%	47%	46%	47%		4%	+233	+340	3,377
Capilano	BC Public	044	North Vancouver	57%	60%	59%	57%	61%		-3%		-85	1,174
		045	West Vancouver	50%	49%	54%	48%	46%		-4%	-2	+48	706
		046	Sunshine Coast	45%	40%	44%	51%	54%		14%	-3	-50	230
		048	Sea to Sky	38%	39%	46%	39%	31%		43%	-19	+7	302
	064	Gulf Islands^					50%			+3	+6	6	
	All BC Public Schools in Region			51%	52%	55%	52%	52%		2%	-19	-66	2,430
All BC Independent Schools in Region			46%	48%	45%	42%	45%		9%	+34	+81	413	
All BC Public & Independent Schools in Region				51%	52%	54%	50%	51%		2%	+15	+15	2,843
Douglas	BC Public	040	New Westminster	60%	55%	61%	59%	62%		13%	+37	+43	469
		041	Burnaby	69%	67%	67%	71%	64%		6%	+65	+254	2,051
		042	Maple Ridge-Pitt Meadows	42%	44%	44%	45%	44%		28%	+115	+228	1,205
		043	Coquitlam	58%	60%	60%	57%	57%		4%	+105	+196	2,701
	All BC Public Schools in Region			59%	59%	60%	59%	57%		8%	+326	+726	6,436
	All BC Independent Schools in Region			64%	66%	67%	67%	69%		18%	+49	+43	411
All BC Public & Independent Schools in Region				59%	59%	60%	60%	58%		9%	+375	+769	6,847
Fraser Valley	BC Public	033	Chilliwack	43%	40%	40%	39%	36%		10%	-7	+117	847
		034	Abbotsford	46%	46%	49%	49%	49%		8%	+158	+229	1,450
		075	Mission	36%	37%	41%	35%	40%		-4%	+19	-3	423
		078	Fraser-Cascade	41%	46%	49%	45%	29%		6%	-10	+8	111
	All BC Public Schools in Region			43%	43%	45%	44%	43%		7%	+160	+351	2,831
	All BC Independent Schools in Region			35%	40%	38%	36%	40%			+20	+2	406
All BC Public & Independent Schools in Region				42%	42%	44%	43%	43%		6%	+180	+353	3,237
Kwantlen	BC Public	035	Langley	40%	45%	47%	43%	40%		3%	+38	+103	1,407
		036	Surrey	58%	59%	59%	61%	60%		26%	+624	+888	5,001
		037	Delta	53%	55%	61%	61%	63%		7%	+205	+151	1,330
		038	Richmond	72%	73%	76%	73%	72%		2%	+59	+85	1,892
	All BC Public Schools in Region			58%	59%	61%	60%	60%		14%	+930	+1,247	9,669
	All BC Independent Schools in Region			47%	51%	51%	50%	54%		0%	+77	+61	767
All BC Public & Independent Schools in Region				57%	59%	60%	60%	59%		13%	+1,007	+1,308	10,436
Malaspina	BC Public	047	Powell River	41%	47%	55%	47%	44%		11%	+21	+37	199
		068	Nanaimo-Ladysmith	48%	50%	50%	46%	47%		-10%	-29	-37	970
		069	Qualicum	43%	37%	42%	47%	45%		33%	-13	-42	341
		079	Cowichan Valley	45%	46%	48%	47%	45%		-5%	-28	-56	551
	All BC Public Schools in Region			46%	46%	48%	46%	46%		-2%	-43	-89	2,073
	All BC Independent Schools in Region			33%	34%	40%	34%	33%		10%	+16	+46	390
All BC Public & Independent Schools in Region				44%	45%	47%	45%	44%		-1%	-27	-43	2,463
New Caledonia	BC Public	028	Quesnel	46%	50%	48%	46%	47%		3%	-9	-22	254
		057	Prince George	51%	50%	50%	52%	51%		20%	-6	-10	952
		091	Nechako Lakes	47%	47%	44%	44%	41%		24%	-8	+22	306
		All BC Public Schools in Region			49%	50%	49%	50%	48%		19%	-25	-16
	All BC Independent Schools in Region			48%	50%	57%	60%	52%		178%	+5	+8	31
	All BC Public & Independent Schools in Region				49%	50%	49%	50%	48%		21%	-20	-8

Figure 9 continues on the next page . . .

Figure 9 Notes:

~ 5-Year Change is from grade year 2006/07 to 2011/12. These columns show Trans % (percent change in number of immediate-entry students); # Trans (+/- change in number of immediate-entry students); # Grads (+/- change in number of grade 12 graduates).

\* Due to the small number of students in Conseil Scolaire Francophone, the transition rates are not reported for school district 093 within each college region, but these students are included in college region subtotals and shown separately in the provincial total.

^ The following school districts span two college regions: Kootenay Lake school district (in Rockies and Selkirk college regions) and

Figure 9, continued: Immediate-Entry Student Transition Rates by Region of Graduation, School Type and School District — Grade 12 Graduates of 2007/08 to 2010/11

Region of Grade 12 Graduation				Immediate-Entry Transition Rate						5-Yr Change~			# Grads	
College Region of Gr12 Graduation	School Type	School District		2007/2008	2008/2009	2009/2010	2010/2011	2011/2012	Trans % Trend	Trans %	# Trans.	# Grads	2011/2012	
North Island	BC Public	049	Central Coast	67%	65%	54%	18%	60%		-82%	-7	-10	5	
		070	Alberni	50%	40%	47%	58%	54%		21%	-10	-40	249	
		071	Comox Valley	44%	46%	50%	53%	49%		32%	+61	+61	648	
		072	Campbell River	46%	41%	46%	48%	44%		5%	-36	-58	374	
		084	Vancouver Island West	33%	45%	40%	88%	31%		-42%	-2	-5	16	
		085	Vancouver Island North	41%	43%	39%	50%	44%		-17%	-2	-12	86	
		<b>All BC Public Schools in Region</b>			<b>46%</b>	<b>44%</b>	<b>48%</b>	<b>52%</b>	<b>48%</b>		<b>14%</b>	<b>+5</b>	<b>-61</b>	<b>1,383</b>
		<b>All BC Independent Schools in Region</b>			<b>51%</b>	<b>44%</b>	<b>49%</b>	<b>29%</b>	<b>44%</b>		<b>117%</b>	<b>-7</b>	<b>-9</b>	<b>32</b>
<b>All BC Public &amp; Independent Schools in Region</b>				<b>46%</b>	<b>44%</b>	<b>48%</b>	<b>51%</b>	<b>48%</b>		<b>15%</b>	<b>-2</b>	<b>-70</b>	<b>1,415</b>	
Northern Lights	BC Public	059	Peace River South	33%	39%	40%	38%	38%		-8%	+7	-14	250	
		060	Peace River North	31%	32%	28%	33%	28%		16%	-6	+11	315	
		081	Fort Nelson	47%	48%	48%	60%	45%		16%	+2	+7	65	
		087	Stikine	40%	100%			100%		-100%	+3		5	
		<b>All BC Public Schools in Region</b>			<b>33%</b>	<b>36%</b>	<b>35%</b>	<b>37%</b>	<b>34%</b>		<b>4%</b>	<b>+6</b>	<b>+4</b>	<b>635</b>
		<b>All BC Independent Schools in Region</b>			<b>18%</b>	<b>43%</b>	<b>35%</b>	<b>29%</b>	<b>17%</b>		<b>300%</b>	<b>+2</b>	<b>+13</b>	<b>24</b>
<b>All BC Public &amp; Independent Schools in Region</b>				<b>33%</b>	<b>37%</b>	<b>35%</b>	<b>37%</b>	<b>33%</b>		<b>5%</b>	<b>+8</b>	<b>+17</b>	<b>659</b>	
Northwest	BC Public	050	Haida Gwaii	50%	53%	51%	69%	60%		93%	+3		30	
		052	Prince Rupert	60%	56%	63%	58%	60%		-13%	-17	-27	127	
		054	Bulkley Valley	42%	37%	43%	36%	37%		-9%	-11	-4	179	
		082	Coast Mountains	52%	51%	60%	55%	54%		-25%		-19	377	
		092	Nisga'a	70%	44%	73%	79%	77%		-27%	+3	+3	13	
		<b>All BC Public Schools in Region</b>			<b>51%</b>	<b>48%</b>	<b>57%</b>	<b>52%</b>	<b>52%</b>		<b>-16%</b>	<b>-22</b>	<b>-47</b>	<b>726</b>
<b>All BC Independent Schools in Region</b>			<b>27%</b>	<b>30%</b>	<b>43%</b>	<b>39%</b>	<b>24%</b>		<b>-13%</b>	<b>+1</b>	<b>+10</b>	<b>54</b>		
<b>All BC Public &amp; Independent Schools in Region</b>				<b>50%</b>	<b>47%</b>	<b>56%</b>	<b>52%</b>	<b>50%</b>		<b>-15%</b>	<b>-21</b>	<b>-37</b>	<b>780</b>	
Okanagan	BC Public	019	Revelstoke	42%	33%	41%	31%	31%		-43%	-11	-5	80	
		022	Vernon	38%	39%	38%	47%	41%		44%	+33	+30	691	
		023	Central Okanagan	42%	43%	49%	48%	49%		12%	+129	+40	1,687	
		053	Okanagan Similkameen	38%	39%	38%	50%	45%		26%	-4	-36	157	
		058	Nicola-Similkameen	46%	40%	43%	39%	48%		67%	+8	+16	42	
		067	Okanagan Skaha	45%	41%	42%	46%	46%		12%	-16	-47	509	
		083	North Okanagan-Shuswap	43%	44%	39%	42%	39%		20%	-16	+7	537	
		<b>All BC Public Schools in Region</b>			<b>42%</b>	<b>42%</b>	<b>44%</b>	<b>47%</b>	<b>45%</b>		<b>17%</b>	<b>+129</b>	<b>+13</b>	<b>3,717</b>
<b>All BC Independent Schools in Region</b>			<b>42%</b>	<b>40%</b>	<b>41%</b>	<b>40%</b>	<b>40%</b>		<b>70%</b>	<b>+35</b>	<b>+95</b>	<b>290</b>		
<b>All BC Public &amp; Independent Schools in Region</b>				<b>42%</b>	<b>41%</b>	<b>43%</b>	<b>46%</b>	<b>45%</b>		<b>20%</b>	<b>+164</b>	<b>+108</b>	<b>4,007</b>	
Rockies	BC Public	005	Southeast Kootenay	35%	37%	42%	40%	39%		-19%	-1	-48	412	
		006	Rocky Mountain	32%	34%	30%	30%	28%		-8%	-12	-2	259	
		008	Kootenay Lake ^	34%	40%	39%	36%	38%		24%	+1	-9	100	
		<b>All BC Public Schools in Region</b>			<b>34%</b>	<b>36%</b>	<b>38%</b>	<b>36%</b>	<b>35%</b>		<b>-11%</b>	<b>-12</b>	<b>-59</b>	<b>771</b>
<b>All BC Independent Schools in Region</b>						<b>38%</b>	<b>14%</b>			<b>+1</b>	<b>+7</b>	<b>7</b>		
<b>All BC Public &amp; Independent Schools in Region</b>				<b>34%</b>	<b>36%</b>	<b>38%</b>	<b>36%</b>	<b>35%</b>		<b>-10%</b>	<b>-11</b>	<b>-52</b>	<b>778</b>	
Selkirk	BC Public	008	Kootenay Lake ^	44%	45%	42%	50%	44%		8%	-19	-45	264	
		010	Arrow Lakes	56%	48%	49%	65%	56%		89%	+9	+16	43	
		020	Kootenay-Columbia	58%	63%	62%	59%	59%		-12%	-12	-28	311	
		051	Boundary	36%	39%	49%	43%	34%		58%	-10	-20	110	
		<b>All BC Public Schools in Region</b>			<b>49%</b>	<b>52%</b>	<b>52%</b>	<b>53%</b>	<b>50%</b>		<b>6%</b>	<b>-32</b>	<b>-77</b>	<b>728</b>
<b>All BC Independent Schools in Region</b>			<b>100%</b>	<b>50%</b>		<b>55%</b>	<b>43%</b>			<b>+5</b>	<b>+13</b>	<b>14</b>		
<b>All BC Public &amp; Independent Schools in Region</b>				<b>49%</b>	<b>52%</b>	<b>52%</b>	<b>53%</b>	<b>50%</b>		<b>7%</b>	<b>-27</b>	<b>-64</b>	<b>742</b>	
Thompson Rivers	BC Public	027	Cariboo-Chilcotin	48%	42%	43%	41%	36%		-19%	-64	-51	331	
		058	Nicola-Similkameen	46%	37%	47%	39%	52%		-7%	+11	+9	118	
		073	Kamloops/Thompson	47%	46%	47%	45%	47%		4%	-20	-43	1,012	
		074	Gold Trail	40%	45%	47%	44%	36%		-10%	-8	-11	100	
		<b>All BC Public Schools in Region</b>			<b>46%</b>	<b>44%</b>	<b>46%</b>	<b>44%</b>	<b>44%</b>		<b>-3%</b>	<b>-81</b>	<b>-96</b>	<b>1,561</b>
<b>All BC Independent Schools in Region</b>			<b>38%</b>	<b>51%</b>	<b>44%</b>	<b>43%</b>	<b>38%</b>		<b>-10%</b>	<b>+20</b>	<b>+53</b>	<b>130</b>		
<b>All BC Public &amp; Independent Schools in Region</b>				<b>46%</b>	<b>45%</b>	<b>46%</b>	<b>44%</b>	<b>44%</b>		<b>-3%</b>	<b>-61</b>	<b>-43</b>	<b>1,691</b>	
Vancouver/Langara	BC Public	039	Vancouver	66%	68%	68%	64%	65%		-7%	+181	+332	4,385	
		<b>All BC Public Schools in Region</b>			<b>66%</b>	<b>68%</b>	<b>68%</b>	<b>64%</b>	<b>65%</b>		<b>-7%</b>	<b>+168</b>	<b>+320</b>	<b>4,405</b>
		<b>All BC Independent Schools in Region</b>			<b>52%</b>	<b>50%</b>	<b>55%</b>	<b>52%</b>	<b>51%</b>		<b>-5%</b>	<b>-10</b>	<b>-8</b>	<b>1,047</b>
		<b>All BC Public &amp; Independent Schools in Region</b>				<b>63%</b>	<b>64%</b>	<b>65%</b>	<b>62%</b>	<b>63%</b>		<b>-7%</b>	<b>+158</b>	<b>+312</b>
<b>All BC Public Schools in All Regions</b>				<b>53%</b>	<b>54%</b>	<b>53%</b>	<b>54%</b>	<b>53%</b>		<b>6%</b>	<b>+1,685</b>	<b>+2,465</b>	<b>41,826</b>	
<b>Conseil Scolaire Francophone*</b>				<b>55%</b>	<b>65%</b>	<b>53%</b>	<b>54%</b>	<b>48%</b>		<b>30%</b>	<b>+14</b>	<b>+40</b>	<b>133</b>	
<b>All BC Independent Schools in All Regions</b>				<b>48%</b>	<b>49%</b>	<b>49%</b>	<b>47%</b>	<b>48%</b>		<b>8%</b>	<b>+286</b>	<b>+440</b>	<b>4,447</b>	
<b>Grand Total, Province of B.C.</b>				<b>52%</b>	<b>54%</b>	<b>54%</b>	<b>53%</b>	<b>53%</b>		<b>4%</b>	<b>+1,313</b>	<b>+571</b>	<b>45,467</b>	

Figure 9 Notes: See bottom of page 7.