

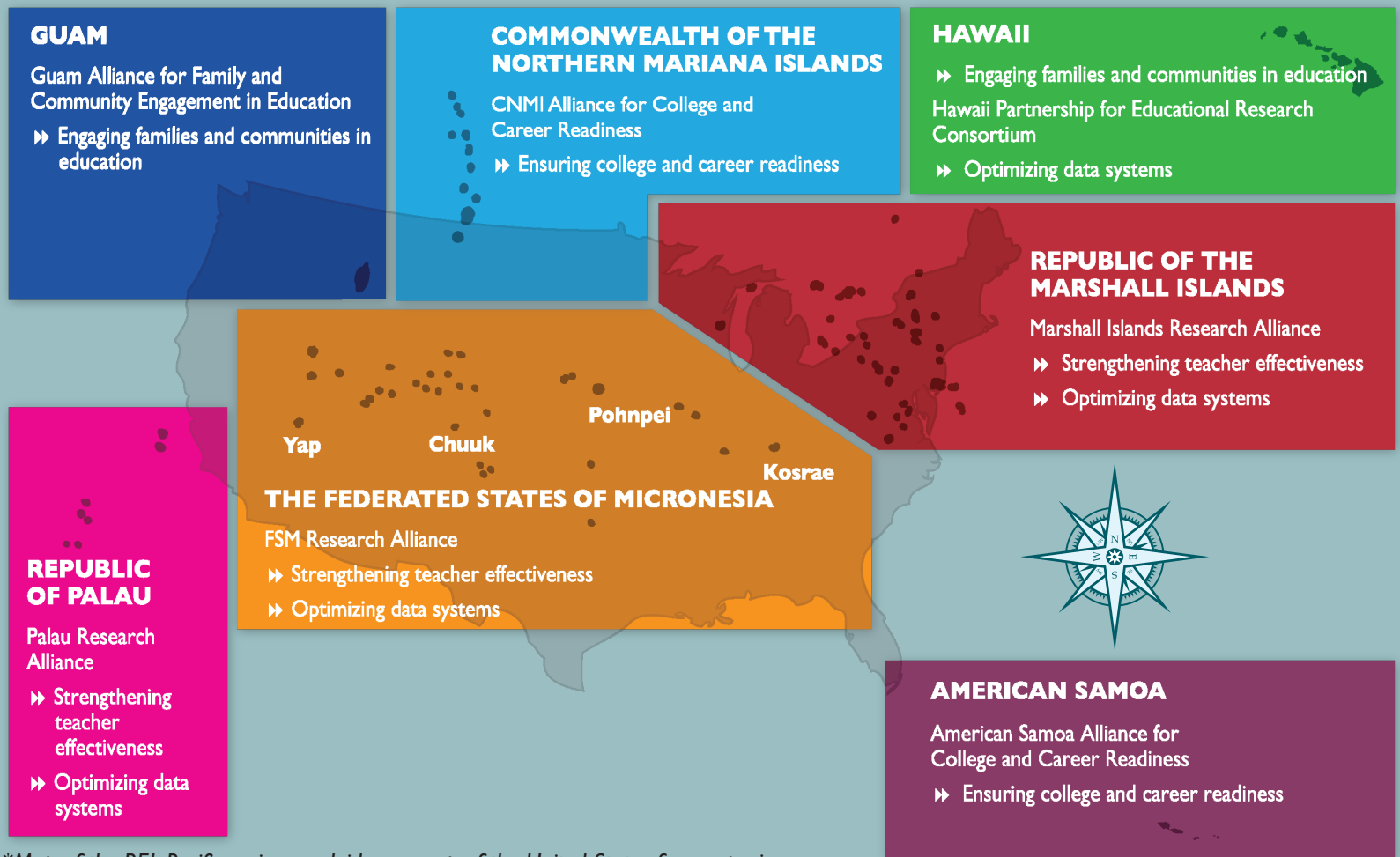
REL PACIFIC RESEARCH ALLIANCES AND PRIORITY AREAS

REGIONAL EDUCATIONAL LABORATORIES (RELS)

The mission of the RELs is to help states, districts, and territories use data and research to improve student outcomes. RELs build capacity to do three things:

- 1 Use data to identify problems and target areas for improvement;
- 2 Select the best approaches for improvement, drawing on credible and up-to-date research; and
- 3 Track the outcomes and evaluate the effects of those choices.

The RELs work with their regions through Research Alliances. These are groups of key education policymakers, practitioners, and researchers that work with REL staff to identify actionable issues that can be better understood and addressed through using data and research.



*Map of the REL Pacific region overlaid on a map of the United States for comparison

REL PACIFIC PRIORITY AREA PROJECTS

Strengthening Teacher Effectiveness

- ▶ Studies and technical assistance related to **teacher preparation and certification**
- ▶ Information and technical assistance related to **teacher absenteeism**
- ▶ Workshops on **human resource management** in education



Engaging Families and Communities in Education

- ▶ Information and technical assistance related to **student engagement** (definitions, policies, and measures)
- ▶ Resources on engaging **parents and community as partners** in education
- ▶ Studies related to **migrant learners** in Hawai'i and Guam



Ensuring College and Career Readiness

- ▶ Information and workshops related to leveraging **longitudinal data systems** to inform decisionmaking
- ▶ Studies and technical assistance related to **college and career readiness indicators**
- ▶ Studies and technical assistance related to **patterns of success in college**.



Optimizing Data Systems

- ▶ Resources to increase **data utility** among Pacific educators
 - The Education Logic Model app
 - The Program Outcomes, Measures and Targets app
 - *Five Steps to Facilitating Data-Informed Conversations* guide
- ▶ Studies and technical assistance related to understanding **research and data** use among Pacific educators
- ▶ Assessments of data system performance and utility relative to **international benchmarks**



[Click here to view the REL Pacific Infographic on Pacific demographics.](#)

Visit relpacific.mcrel.org for additional information on events, resources and the REL program

