

DEPARTMENT OF THE INTERIOR  
BUREAU OF EDUCATION

BULLETIN, 1924, No. 38

STATISTICAL SURVEY OF EDUCATION  
1921-1922

By

FRANK M. PHILLIPS

Chief of the Division of Statistics

[Advance sheets from the Biennial Survey of Education in  
the United States, 1920-1922]



WASHINGTON  
GOVERNMENT PRINTING OFFICE.  
1925

ADDITIONAL COPIES  
OF THIS PUBLICATION MAY BE PROCURED FROM  
THE SUPERINTENDENT OF DOCUMENTS  
GOVERNMENT PRINTING OFFICE  
WASHINGTON, D. C.  
AT  
5 CENTS PER COPY

# STATISTICAL SURVEY OF EDUCATION, 1921-1922

CONTENTS.—Introduction—State school systems—City school systems—Secondary schools—Teacher training schools—Institutions of college grade

## INTRODUCTION

The statistical survey is intended to give a general summary of the statistics of enrollments in the various types of public and of private schools and other institutions reporting to the Bureau of Education for the school year 1921-22, the distribution of teachers, the cost, so far as practicable, of operating these schools, and a comparison of the educational opportunities in the various States of the United States.

Reports have already been printed in the following bulletins:

State Schools Systems.....	No. 31, 1924.
City School Systems.....	No. 34, 1924.
Public High Schools.....	No. 7, 1924.
Private High Schools and Academies.....	No. 60, 1923.
Kindergartens.....	No. 58, 1923.
Universities, Colleges, and Professional Schools.....	No. 20, 1924.
Teachers' Colleges and Normal Schools.....	No. 10, 1924.
Schools and Classes for the Feeble-Minded and Subnormal Children.....	No. 59, 1923.
Industrial Schools for the Delinquent.....	No. 2, 1924.
Schools and Classes for the Blind.....	No. 51, 1923.
Schools and Classes for the Deaf.....	No. 52, 1923.

The statistics included in the reports here named are used in making the summary tables for the survey. The form of the summary tables used in previous surveys is repeated so far as possible and desirable.

In Table 1 are given enrollments in the various types of schools, distributed as to public and to private schools, as reported to the bureau in 1922. Totals are given which exclude duplicates so far as possible.

In Table 2 an attempt is made to include all types of schools reporting to the bureau in 1922, and those not reporting in 1922 but in 1920, together with the cost of operating these schools as shown in the financial reports of such schools as report fiscal statistics, and an estimate of costs for such schools as do not report either receipts or expenditures.

## BIENNIAL SURVEY OF EDUCATION, 1920-1922

TABLE 1.—School and college enrollment in 1921-22

Schools	Public	Private	Total
Kindergartens.....	500,807	55,023	555,830
Elementary (primary and grammar) schools.....	19,865,411	1,290,977	21,156,388
City schools (elementary included above).....	10,280,987		10,280,987
Total elementary and kindergarten enrollment.....	20,366,218	1,355,000	21,721,218
Secondary (high schools and academies).....	2,873,009	225,873	3,098,882
Preparatory departments of colleges.....	20,582	47,067	67,649
Secondary courses in normal schools and teachers' colleges.....	30,920	6,690	37,610
Total secondary students.....	2,924,511	279,630	3,204,141
Teachers' colleges.....	104,964	5,908	110,872
Normal schools:			
Courses not secondary.....		6,239	6,239
State.....	64,298		64,298
City.....	8,882		8,882
County.....	4,243		4,243
Total for normal schools and teachers' colleges.....	182,387	12,147	194,534
Universities, colleges, and professional schools (collegiate students).....	199,941	350,965	550,906
City evening schools (included in city schools).....	842,863		842,863
Industrial schools for delinquents.....	65,550		65,550
Schools for the deaf:			
State.....	10,738		10,738
City.....	2,911	716	14,365
Schools for the blind.....	4,947		4,947
Schools for the feeble-minded and subnormal:			
State.....	38,761		38,761
City.....	23,252	1,386	63,399
Government Indian schools.....	24,568		24,568
Schools in Alaska supported by the Government.....	3,679		3,679
Other public schools in Alaska.....	3,654		3,654
Total for all schools in continental United States and Alaska reporting in 1922.....	23,851,117	1,999,844	25,850,961

TABLE 2.—School enrollment and estimated cost in 1921-22

Classification	Enrollment	Estimated per capita cost	Estimated total cost (including outlays)
Public elementary schools (including kindergartens).....	20,366,218	\$57.12	\$1,163,374,074
Public high schools.....	2,873,009	145.25	417,297,222
Private elementary schools (including kindergartens).....	1,355,000	57.12	77,397,600
Private high schools.....	225,873	145.25	32,808,053
Elementary and secondary schools in cities (included above).....	10,280,987	93.73	963,674,904
Universities and colleges (includes preparatory students):			
Public.....	220,523	580.07	128,117,243
Private.....	398,032	363.54	144,698,460
Teachers colleges (includes all courses).....	129,237	140.40	18,144,807
Normal schools (includes all courses):			
State.....	76,556	214.45	16,417,482
City (included in city schools).....	8,882	173.34	1,539,648
County.....	4,243	193.70	821,857
Private.....	12,063	282.24	3,410,284
Industrial schools for delinquents.....	65,550	289.14	18,952,835
Schools for the deaf:			
State.....	10,738	618.00	6,636,084
City (included in city schools).....	2,911		
Private.....	716	840.00	605,736
Schools for the blind.....	4,947	585.00	2,893,995
Schools for the feeble-minded and subnormal:			
State.....	38,761	357.00	13,837,677
City (included in city schools).....	23,252		
Private.....	1,386	906.00	1,255,716
City evening schools (included in city schools).....	842,863	7.61	6,413,420
Government Indian schools.....	24,568	239.91	5,894,230
Schools in Alaska supported by the Government.....	3,679	88.32	324,947
Other public schools in Alaska.....	3,654	99.12	362,190

<sup>1</sup> Partly estimated.

<sup>2</sup> Estimated same as cost of public schools.

<sup>3</sup> Receipts, excluding endowments.

TABLE 2.—School enrollment and estimated cost in 1921-22—Continued

Classification	Enrollment	Estimated per capita cost	Estimated total cost (including outlays)
Teachers colleges:			
Extension courses.....	24, 665		
Practice and model schools.....	59, 621		
State normal schools:			
Extension courses.....	10, 746		
Practice and model schools.....	35, 461		
Private normal schools:			
Extension courses.....	44		
Practice and model schools.....	6, 858		
Colleges, universities, and professional schools:			
Extension courses.....	75, 909		
Correspondence courses.....	38, 495		
Grand total resident, extension, and correspondence students.....	26, 458, 655		\$2, 053, 250, 492

TABLE 3.—Gifts and bequests to education, 1912-1922

Institutions	1912	1914	1916	1918	1920	1922
Universities and colleges.....	\$24, 783, 090	\$26, 670, 017	\$30, 196, 006			
Schools of theology.....	1, 680, 754	1, 558, 281	2, 257, 359	\$27, 450, 945	\$65, 286, 159	\$77, 400, 756
Schools of law.....	425, 867	203, 067	128, 588			
Schools of medicine.....	1, 296, 288	1, 495, 773	2, 253, 598			
Public normal schools.....	479, 624	607, 431	758, 998	40, 548	34, 310	
Private normal schools.....	133, 472	116, 283	143, 012	616, 817	2, 096, 687	930, 034
Private high schools.....	1, 262, 215	706, 546	1, 357, 719	1, 748, 258	(1)	(1)
Total.....	30, 061, 310	31, 357, 398	37, 095, 280	29, 856, 568	67, 417, 156	78, 330, 790

<sup>1</sup> No data.

TABLE 4.—Gifts and bequests to education from 1871 to 1922

1871.....	\$8, 593, 740	1890.....	\$8, 011, 019	1908.....	\$19, 763, 421
1872.....	10, 072, 540	1891.....	8, 519, 233	1909.....	21, 192, 450
1873.....	11, 225, 977	1892.....	8, 721, 902	1910.....	24, 755, 663
1874.....	6, 053, 804	1893.....	8, 207, 690	1911.....	27, 634, 029
1875.....	4, 126, 562	1894.....	10, 855, 365	1912.....	30, 061, 310
1876.....	4, 691, 845	1895.....	8, 240, 876	1913.....	29, 651, 879
1877.....	3, 015, 256	1896.....	11, 677, 048	1914.....	31, 357, 398
1878.....	3, 103, 289	1897.....	10, 049, 141	1915.....	26, 023, 246
1879.....	5, 249, 810	1898.....	10, 981, 209	1916.....	37, 095, 280
1880.....	5, 518, 501	1899.....	25, 332, 792	1918.....	29, 856, 568
1881.....	7, 440, 224	1900.....	15, 066, 561	1920.....	67, 417, 156
1883.....	7, 141, 363	1901.....	21, 158, 400	1922.....	78, 330, 790
1884.....	11, 270, 286	1902.....	20, 348, 739		
1885.....	9, 314, 081	1903.....	17, 915, 075	Total, excluding	
1886.....	5, 976, 168	1904.....	17, 261, 375	1882, 1917, 1919,	
1887.....	7, 512, 910	1905.....	21, 827, 875	and 1921.....	823, 141, 122
1888.....	6, 646, 368	1906.....	23, 347, 070		
1889.....	6, 942, 038	1907.....	28, 585, 780		

TABLE 5.—Distribution of teachers for five periods

Teachers in—	1890		1900		1910		1920		1922		Total
	Men	Women	Men	Women	Men	Women	Men	Women	Men	Women	
Public elementary schools.....	121,877	232,925	116,416	286,274	91,591	389,952	63,024	513,222	72,492	520,947	593,439
Public high schools.....	3,048	5,472	10,172	10,200	18,890	22,777	32,386	69,572	45,593	83,944	129,537
Private elementary schools (estimated).....	6,807	15,199	6,648	19,768	5,171	29,572	6,322	38,977	6,552	40,858	47,410
Private high schools.....	3,272	3,937	4,275	5,942	4,512	6,034	5,698	9,248	5,446	8,791	14,237
Universities and colleges:.....											
Preparatory departments.....											
Collegiate departments.....	5,080	1,083	2,433	1,008	2,716	1,216	2,714	1,568	2,907	1,731	4,633
Other departments.....			8,450	949	13,428	1,549	21,644	6,469	25,685	7,424	33,109
Colleges for women:.....											
Preparatory departments.....											
Collegiate departments.....											
Professional schools:.....	595	1,700	703	1,754	91	525	(1)	(1)	(1)	(1)	(1)
Theology.....					623	1,681					
Law.....	744		994		1,453						
Medicine.....	346		1,004		1,534						
Dentistry.....	2,851		4,483		7,366						
Pharmacy.....	183		1,118		1,546						
Veterinary medicine.....	93		185		815						
Teachers' colleges and normal schools, public:.....											
Normal department.....			936	1,236	1,105	2,080	2,943	5,161	3,653	5,690	9,343
Other departments.....			133	611	587	1,042					
Teachers' colleges and normal schools, private:.....											
Normal department.....			535	382	255	320	597	866	541	846	1,407
Other departments.....			257	283	248	277					
Commercial and business schools.....	1,133	460	1,413	699	1,736	1,200	2,976	3,189	3,224	3,587	6,811
Schools for defectives and delinquents.....	564	962	813	1,652	1,134	2,352	1,165	2,744	1,127	2,992	4,119
Indian and Alaskan schools.....	644	965	1,189	1,793	1,702	2,450	141	652	232	505	737
Kindergartens:.....											
Public.....	1,050	4,950	1,350	7,150	1,500	8,000		10,022		10,213	10,213
Private.....								717		1,629	1,629
Total.....	149,428	267,653	163,999	339,599	158,574	471,633	151,215	643,958	180,362	690,769	871,131

\* Included in universities and colleges.

\* Professional departments.

\* Figures for 1918.

\* Does not include 1,832 men and 817 women, duplicates, in universities, colleges, and professional schools.

TABLE 6.—*Kindergarten, elementary, commercial, secondary, normal school, and college enrollments, 1890–1922*

Schools	1890	1895	1900	1905
Kindergartens (public and private)	1 31, 227	1 65, 296	225, 394	1 205, 118
Public elementary schools (including public kindergartens)	12, 519, 518	13, 893, 666	14, 983, 859	15, 788, 598
Private elementary schools (largely estimated)	1 661, 897	1 211, 220	1 240, 925	1 347, 000
Total elementary and kindergarten	14, 181, 415	15, 104, 886	16, 224, 784	17, 135, 598
Public high schools	202, 963	350, 099	519, 251	679, 702
Private high schools	94, 931	118, 347	110, 797	107, 207
Preparatory schools (in colleges and universities)	51, 749	57, 403	58, 285	63, 421
Secondary students in normal schools	8, 170	13, 863	9, 570	15, 824
Total secondary students	357, 813	539, 712	695, 903	866, 154
Normal schools and teachers' colleges (excluding secondary students)	34, 814	58, 504	69, 590	65, 300
Colleges, universities, and professional schools (excluding preparatory students)	121, 942	144, 706	167, 999	199, 045
Total college and normal students	156, 756	203, 210	237, 592	264, 345
Private commercial and business schools	78, 920	96, 135	91, 549	146, 086

Schools	1910	1915	1920	1922
Kindergartens (public and private)	1 185, 471	486, 800	510, 949	555, 830
Public elementary schools (including public kindergartens)	16, 898, 791	18, 375, 225	19, 378, 927	20, 366, 218
Private elementary schools (largely estimated)	1 558, 437	1 615, 091	1 485, 561	1 355, 000
Total elementary and kindergarten	18, 457, 228	19, 990, 316	20, 864, 488	21, 721, 218
Public high schools	915, 061	1 328, 984	1 299, 389	1 287, 009
Private high schools	117, 400	155, 044	1 213, 920	1 225, 873
Preparatory schools (in colleges and universities)	66, 042	67, 440	59, 309	67, 649
Secondary students in normal schools	12, 890	13, 504	22, 058	37, 610
Total secondary students	1, 111, 393	1 564, 972	2 494, 676	3 204, 141
Normal schools and teachers' colleges (excluding secondary students)	88, 561	100, 325	135, 412	194, 534
Colleges, universities, and professional schools (excluding preparatory students)	266, 654	303, 233	462, 445	550, 906
Total college and normal students	355, 215	403, 558	597, 857	745, 440
Private commercial and business schools	155, 244	183, 268	335, 161	1 337, 130

1 1888.    1 1892.    1 Public only.    1 1909.    1 From State reports.    1 Estimated.

TABLE 7.—Enrollment in certain types of schools, by States, 1921-22

States	Elementary schools and kindergartens		Secondary schools		Normal schools and teachers' colleges		Universities, colleges, and professional schools		Total
	Public	Private (largely estimated)	Public	Private	Public	Private	Public	Private	
1	2	3	4	5	6	7	8	9	10
<b>Continental United States</b> .....	20,366,218	1,355,000	2,924,511	279,630	182,387	12,147	199,941	350,965	25,670,799
Alabama.....	545,206	15,774	48,696	6,922	4,678	82	3,066	1,629	626,053
Arizona.....	58,724	1,861	7,777	324	551	.....	1,369	.....	70,606
Arkansas.....	473,698	1,650	36,318	1,263	988	.....	968	1,513	516,398
California.....	611,453	28,527	229,083	14,841	4,652	200	15,108	10,981	914,845
Colorado.....	201,767	3,000	39,994	1,155	3,428	.....	3,906	3,194	256,444
Connecticut.....	245,757	51,738	38,073	5,699	1,049	292	369	5,127	348,104
Delaware.....	34,505	3,900	4,770	378	.....	.....	471	.....	44,024
District of Columbia.....	58,548	10,000	11,037	1,844	347	10	71	11,141	92,968
Florida.....	220,252	5,030	17,817	1,327	.....	.....	1,373	636	247,335
Georgia.....	676,444	10,000	50,363	5,092	970	.....	4,285	5,151	758,305
Idaho.....	100,754	1,200	18,731	1,048	945	197	1,398	405	124,678
Illinois.....	1,086,111	170,299	164,176	30,879	9,832	1,325	9,659	38,071	1,510,352
Indiana.....	494,760	23,203	96,930	4,770	6,514	2,912	6,238	9,168	644,495
Iowa.....	402,138	28,918	142,174	6,862	5,416	42	9,749	10,340	605,639
Kansas.....	342,306	25,534	75,181	3,984	6,652	.....	6,575	5,455	465,689
Kentucky.....	547,028	11,494	35,129	6,179	3,767	12	2,410	3,273	609,292
Louisiana.....	357,764	1,827	3,006	3,041	1,763	.....	1,069	3,701	402,170
Maine.....	121,793	11,766	2,407	2,418	1,329	.....	1,307	1,528	165,548
Maryland.....	228,736	24,516	21,735	3,494	1,149	36	4,453	6,196	290,315
Massachusetts.....	583,486	126,972	115,101	13,709	3,961	1,015	824	36,725	881,793
Michigan.....	613,029	99,641	95,195	8,389	15,540	175	12,891	4,296	849,156
Minnesota.....	459,138	41,395	73,919	7,029	5,961	173	9,215	5,118	601,948
Mississippi.....	530,797	5,750	30,641	3,550	1,464	.....	2,701	1,391	570,294
Missouri.....	648,156	49,828	90,802	7,319	9,135	105	5,527	11,603	822,475
Montana.....	102,418	2,730	18,838	1,069	1,277	.....	2,231	166	128,735
Nebraska.....	271,388	18,917	50,763	4,655	4,038	29	6,594	3,825	359,609
Nevada.....	11,914	.....	2,492	.....	12	.....	726	.....	15,144
New Hampshire.....	57,719	21,385	9,675	10,622	878	.....	974	2,101	103,354
New Jersey.....	658,639	34,971	70,050	7,247	2,295	74	.....	5,485	678,761
New Mexico.....	73,554	3,887	8,601	380	955	.....	636	.....	88,103
New York.....	1,567,585	91,642	260,655	32,000	10,655	646	5,822	57,058	2,020,063
North Carolina.....	714,529	18,228	40,829	6,923	1,922	149	3,464	5,278	791,322
North Dakota.....	152,404	3,150	21,921	473	3,389	.....	1,750	828	183,915
Ohio.....	939,098	80,066	181,687	10,989	8,041	423	17,131	17,540	1,254,975
Oklahoma.....	575,280	1,620	67,477	1,543	7,788	.....	4,867	1,674	660,249
Oregon.....	134,264	11,486	30,686	1,170	1,127	220	5,950	3,002	187,905
Pennsylvania.....	1,514,826	108,000	196,129	19,439	9,906	191	3,181	40,430	1,892,088
Rhode Island.....	90,478	23,779	11,188	2,074	451	.....	384	2,110	130,464
South Carolina.....	455,345	7,000	25,139	2,589	106	.....	3,299	2,841	496,319
South Dakota.....	137,800	3,411	20,814	1,252	2,955	228	1,579	1,182	169,221
Tennessee.....	597,760	18,963	45,320	6,664	4,345	2,752	1,443	5,608	682,855
Texas.....	1,049,425	14,496	118,224	6,209	12,323	.....	8,876	10,454	1,220,007
Utah.....	103,720	564	20,550	3,686	.....	21	3,153	759	132,453
Vermont.....	50,751	5,672	12,688	2,379	81	.....	1,061	858	73,480
Virginia.....	512,727	7,900	35,314	6,301	4,322	744	4,215	4,994	576,517
Washington.....	247,212	15,523	55,484	3,016	3,561	94	7,335	1,271	333,496
West Virginia.....	337,571	5,881	28,290	2,790	2,131	.....	1,974	1,189	370,826
Wisconsin.....	425,235	100,000	77,719	5,061	9,738	.....	7,756	5,670	631,179
Wyoming.....	42,225	1,000	5,837	183	.....	.....	548	.....	49,793
<b>Outlying possessions</b>									
Canal Zone.....	3,450	.....	256	.....	.....	.....	.....	.....	3,706
Guam.....	2,349	20	27	.....	.....	.....	.....	.....	2,396
Hawaii.....	42,768	7,446	1,503	813	315	11	404	.....	53,245
Philippine Islands.....	1,062,387	114,200	24,000	12,000	864	.....	.....	.....	1,204,406
Porto Rico.....	208,906	5,615	12,481	536	.....	.....	411	.....	227,849
Virgin Islands.....	3,060	1,343	62	.....	.....	.....	.....	.....	4,455



TABLE 8.—Percentage distribution of pupils enrolled in certain types of schools, by States, 1921-22

States	Elementary schools and kindergartens		Secondary schools		Normal schools and teachers' colleges		Universities, colleges, and professional schools	
	Public	Private (largely estimated)	Public	Private	Public	Private	Public	Private
1	2	3	4	5	6	7	8	9
Continental United States	79.34	5.28	11.39	1.09	0.71	0.05	0.78	1.37
Alabama	87.09	2.52	7.78	1.11	.75	.01	.49	.26
Arizona	83.17	2.64	11.01	.46	.78		1.04	
Arkansas	91.73	.32	7.03	.24	.19		.19	.29
California	66.84	3.12	25.04	1.62	.51	.02	1.65	1.20
Colorado	78.68	1.17	15.60	.45	1.34		1.52	1.25
Connecticut	70.60	14.86	10.94	1.64	.30	.08	.11	1.47
Delaware	78.38	8.86	10.83	.86			1.07	
District of Columbia	62.96	10.75	11.87	1.98	.37	.01	.08	11.98
Florida	89.05	2.40	7.20	.54			.56	.26
Georgia	89.20	1.32	7.43	.67	.13		.57	.68
Idaho	80.81	.96	15.02	.84	.78	.16	1.12	.32
Illinois	71.91	11.28	10.87	2.04	.65	.09	.64	2.52
Indiana	76.77	3.60	15.04	.74	.88	.58	.97	1.42
Iowa	66.40	4.77	23.48	1.13	.89	.01	1.61	1.71
Kansas	73.51	5.48	16.14	.86	1.43		1.41	1.17
Kentucky	89.78	1.89	5.77	1.01	.62		.40	.54
Louisiana	88.96	.45	8.21	.76	.44		.27	.92
Maine	73.57	7.11	15.35	1.46	.80		.79	.92
Maryland	78.79	8.44	7.49	1.20	.40	.01	1.53	2.13
Massachusetts	66.17	14.40	13.05	1.55	.45	.12	.21	4.16
Michigan	72.19	11.73	11.21	.99	1.83	.02	1.52	.51
Minnesota	76.28	6.88	12.28	1.17	.99	.03	1.53	.85
Mississippi	92.11	1.00	5.32	.62	.25		.47	.24
Missouri	78.81	6.06	11.04	.89	1.11	.01	.67	1.41
Montana	79.56	2.13	14.63	.83	.99		1.73	.13
Nebraska	75.47	5.26	14.12	1.13	1.12	.01	1.83	1.06
Nevada	78.67		16.46		.08		4.79	
New Hampshire	55.85	20.69	9.36	10.28	.85		.94	2.03
New Jersey	82.30	5.16	10.32	1.67	.34	.01		.81
New Mexico	83.49	4.41	9.86	.43	1.08		.72	
New York	77.37	4.52	12.87	1.58	.53	.03	.29	2.82
North Carolina	90.30	2.30	5.16	.87	.24	.02	.44	.67
North Dakota	82.87	1.71	11.92	.26	1.84		.95	.45
Ohio	74.83	6.38	14.48	.88	.64	.03	1.37	1.40
Oklahoma	87.13	.25	10.22	.23	1.18		.74	.25
Oregon	71.45	6.11	16.33	.62	.60	.12	3.17	1.60
Pennsylvania	80.06	5.71	10.37	1.03	.52	.01	.17	2.14
Rhode Island	69.35	18.23	8.58	1.59	.35		.29	1.02
South Carolina	91.74	1.41	5.07		.02		.66	.57
South Dakota	81.43	2.02	12.30	.74	1.75	.13	.93	.70
Tennessee	87.54	2.78	6.64	.98	.64	.40	.21	.82
Texas	86.02	1.19	9.69	.51	1.01		.73	.86
Utah	78.31	.43	15.51	2.78		.02	2.38	.57
Vermont	69.07	7.72	17.27	3.24	.11		1.43	1.17
Virginia	88.94	1.37	6.13	1.09	.75	.13	.86	.87
Washington	74.13	4.65	16.64	.90	1.07	.03	2.20	.38
West Virginia	88.88	1.55	7.45	.73	.56		.52	.31
Wisconsin	67.37	15.84	12.31	.80	1.54		1.23	.90
Wyoming	84.80	2.01	11.72	.37			1.47	
<i>Outlying possessions</i>								
Canal Zone	93.09		6.91					
Guam	98.04	.83	1.13					
Hawaii	80.29	13.98	2.82	1.53	.59	.02	.76	
Philippine Islands	87.38	9.48	2.07	1.00	.07			
Porto Rico	91.69	2.42	5.48	.24			.18	
Virgin Islands	68.65	30.16	6.59					

Figure 1 shows growth in population, college enrollment, and secondary school enrollment, upon a basis of the population enumeration and enrollments in 1890. The graph illustrates the rapid, and continuous growth of high-school enrollment, the less rapid, but

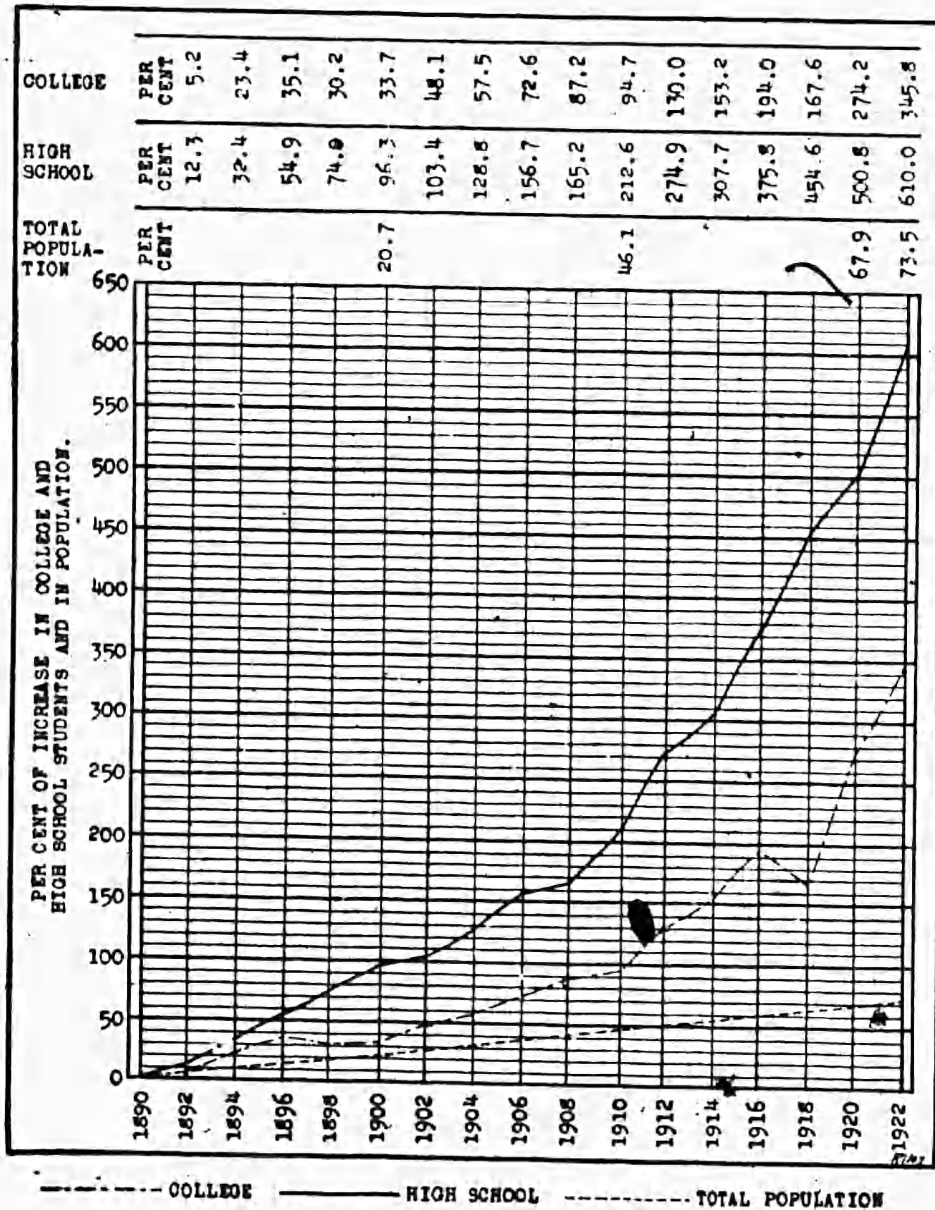


FIG. 1.—College and high-school enrollment, total population

substantial and continuous growth of college enrollment. Both of these curves should lend encouragement to the educator, as they reflect the prosperous condition of our school systems. While the population has been increasing 73.5 per cent, college enrollment has increased 346 per cent and high-school enrollment 610 per cent.

VALUE OF SCHOOL PROPERTY

The States report a total valuation of public elementary and secondary school property of \$3,008,563,063. Private high schools and academies report \$265,361,403. Teachers' colleges and normal schools report \$126,025,125; and universities, colleges, and professional schools report \$669,213,452. If the value of school property used by private elementary schools is estimated at \$300,000,000, the total value for all these types of schools is \$4,369,163,043.

TABLE 9.—Survivals of the class entering in 1911, based upon enrollments for 1911 to 1922, and certain grade distributions

Year	Grade	Number	Survival per cent ages	Survivals of 5th grade	Survivals of 5th grade, adjusted <sup>1</sup>	Grades	Distribution of elementary and high in 1922	Distribution in 12 States, <sup>2</sup> 1922		
								Distribution in 830 cities in 1922	White	Colored
1	2	3	4	5	6	7	8	9	10	11
1911	1	3,889,542	100.00			1	21.1	17.90	21.84	35.05
1912	2	2,445,174	62.87			2	14.4	13.68	13.11	17.49
1913	3	2,316,117	59.55			3	13.7	13.12	12.64	14.93
1914	4	2,287,632	58.82			4	12.9	12.93	11.93	12.03
1915	5	2,021,627	51.98	100.00	100.0	5	11.5	12.54	10.57	8.59
1916	6	1,784,266	45.87	88.24	83.0	6	10.4	11.62	9.04	5.56
1917	7	1,471,507	37.83	72.78	71.0	7	8.8	9.98	7.69	3.37
1918	8	1,129,634	29.04	55.88	63.4	8	7.2	8.23	2.57	.60
1919	9	840,602	21.61	41.55	34.2	9	42.3	40.74	4.63	1.18
1920	10	558,010	14.35	27.60	26.2	10	27.2	26.60	2.84	.60
1921	11	436,470	11.22	21.55	18.1	11	17.9	18.30	1.77	.30
1922	12	343,638	8.84	17.00	15.0	12	12.6	14.36	1.14	.16

<sup>1</sup> From a study eliminating retardation. Biennial Survey of Education, 1916-1918, Vol. 111, p. 703.  
<sup>2</sup> See Table 15.  
<sup>3</sup> First year of high school.

STATE SCHOOL SYSTEMS

The following tables give a summary of educational statistics in the various States. Twelve States reported enrollment by grades for white children and for colored children separately. In a majority of these States the elementary school has but seven years of work. The ratio of white children in school to the number of white children 5 to 17 years of age, inclusive, is 0.840 and of colored children in school to colored children of the same age group is 0.714. The per cent of enrollment of white children in the high school is 10.35 and of the colored children is 2.24. The 12 States are Alabama, Delaware, District of Columbia, Florida, Georgia, Maryland, Oklahoma, South Carolina, Tennessee, Texas, Virginia, and West Virginia.

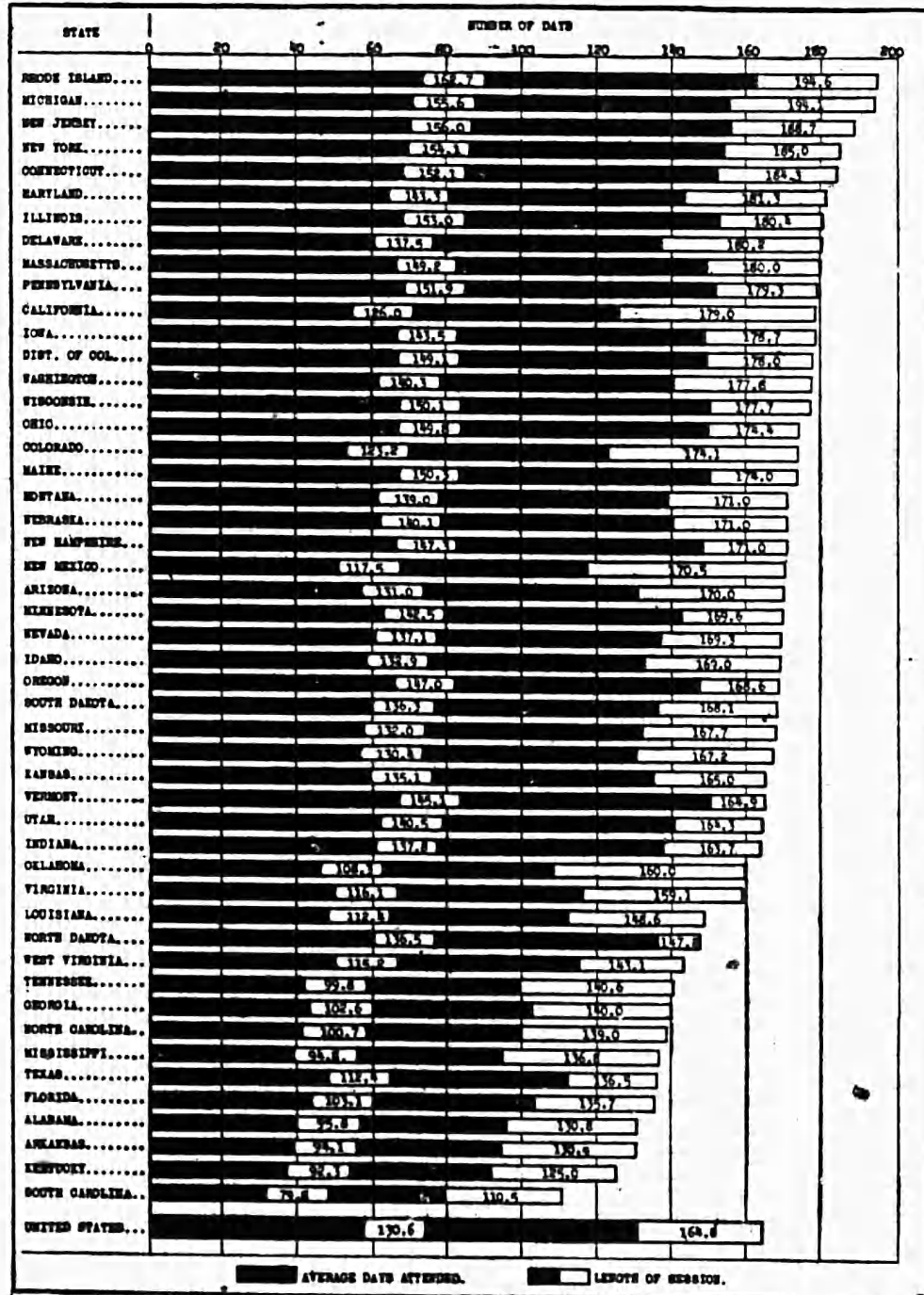


FIG. 2.—Length of session and average days attended, 1921-22

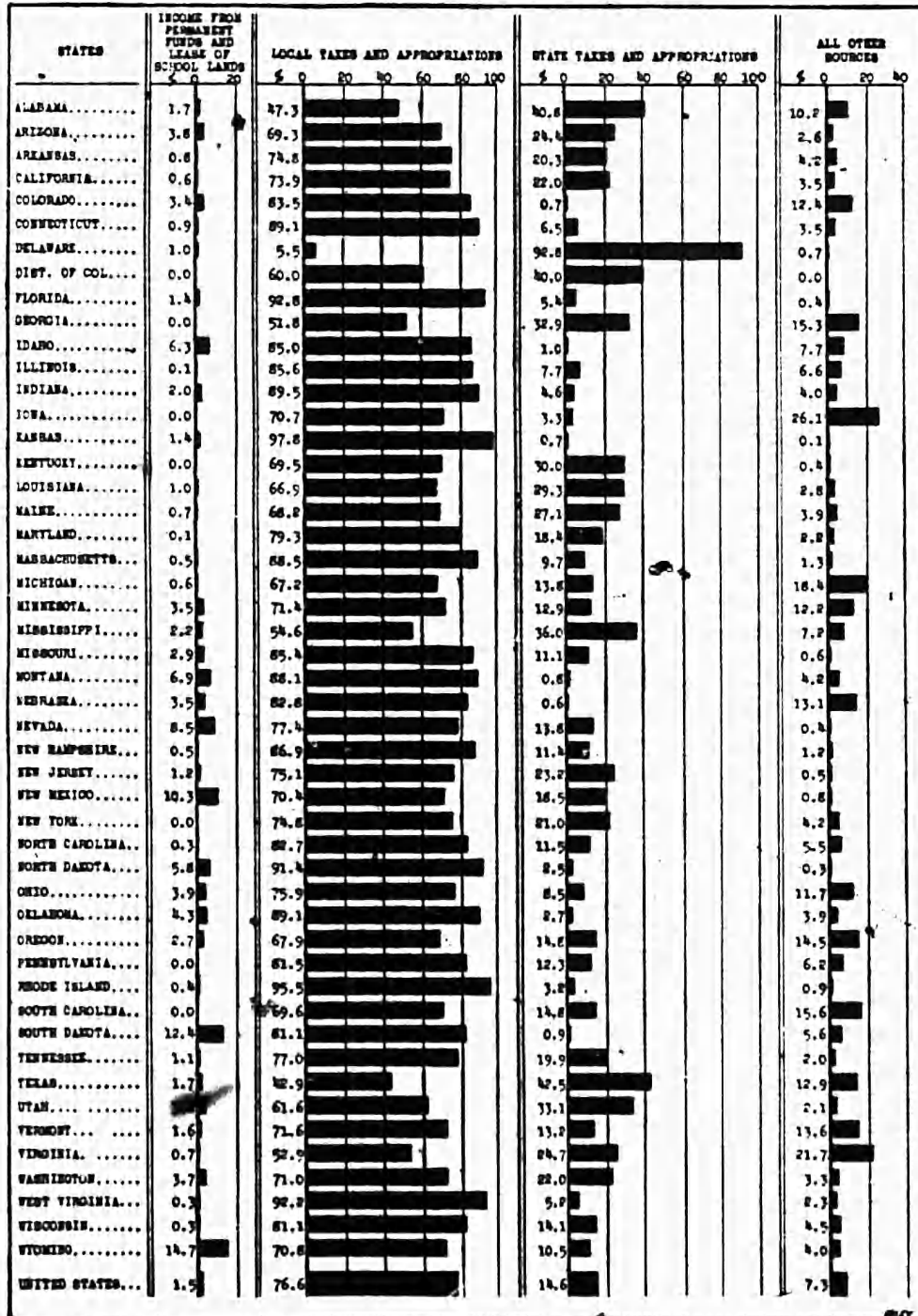


FIG. 3.—Percentage distribution of total revenue receipts, by States, 1922

TABLE 10.—Summary of educational statistics by States, 1921-22

States	Number of teaching positions	Total enrollment	Average daily attendance	Estimated number 5-17 years, inclusive	Total current expenses and outlays	Total receipts
1	2	3	4	5	6	7
Continental United States.....	705,499	23,239,227	18,432,213	28,627,201	\$1,580,671,236	\$1,743,192,456
Alabama.....	13,849	592,610	434,248	792,515	12,827,945	11,759,514
Arizona.....	2,152	66,290	51,057	96,435	7,065,189	8,545,339
Arkansas.....	9,200	509,351	367,516	581,530	8,828,859	8,864,629
California.....	22,132	838,723	590,309	734,993	93,534,315	105,213,098
Colorado.....	8,977	240,772	170,426	243,387	19,366,016	19,609,415
Connecticut.....	7,828	283,759	234,277	343,500	21,341,789	21,695,491
Delaware.....	1,263	39,142	29,868	53,177	2,465,708	4,291,468
District of Columbia.....	2,224	69,541	58,262	80,500	5,722,520	6,491,658
Florida.....	6,742	237,720	180,651	287,239	9,768,596	13,797,694
Georgia.....	16,344	730,873	535,620	959,099	13,505,702	14,198,073
Idaho.....	4,389	119,164	93,688	130,741	9,556,267	10,556,041
Illinois.....	39,304	1,249,208	1,059,465	1,610,422	103,201,265	108,743,995
Indiana.....	18,143	591,690	497,888	722,396	63,358,907	38,816,638
Iowa.....	23,832	543,430	436,340	601,385	49,514,571	63,152,358
Kansas.....	18,100	415,082	339,789	467,136	34,319,377	36,677,786
Kentucky.....	13,891	581,313	429,178	709,985	14,149,189	17,734,157
Louisiana.....	10,371	390,324	265,099	567,549	16,452,576	18,547,108
Maine.....	6,118	147,170	127,159	183,138	8,266,289	9,062,065
Maryland.....	7,343	250,328	197,764	366,823	14,719,273	17,673,246
Massachusetts.....	20,874	698,268	578,652	906,955	57,332,711	56,150,598
Michigan.....	23,811	707,645	567,295	918,367	72,739,880	79,567,684
Minnesota.....	20,476	531,059	446,294	629,537	52,210,972	57,413,010
Mississippi.....	14,854	560,833	388,643	592,691	9,390,413	10,532,906
Missouri.....	22,393	736,522	579,629	859,185	40,980,065	45,581,062
Montana.....	6,096	120,929	98,816	151,871	13,976,623	14,263,791
Nebraska.....	13,995	320,128	262,278	349,822	30,687,770	29,780,500
Nevada.....	714	14,406	11,661	15,930	1,673,249	2,103,947
New Hampshire.....	2,722	67,394	58,030	100,866	4,883,243	5,092,795
New Jersey.....	18,218	628,689	519,490	808,973	63,966,428	71,650,206
New Mexico.....	2,664	80,929	55,762	111,366	5,162,674	5,194,515
New York.....	58,246	1,823,130	1,518,781	2,436,390	183,421,841	213,733,650
North Carolina.....	19,793	753,698	546,250	872,279	22,079,183	25,580,803
North Dakota.....	8,261	173,238	160,577	208,180	15,420,977	15,400,317
Ohio.....	35,740	1,120,293	962,415	1,384,436	116,568,994	143,605,697
Oklahoma.....	17,233	637,299	431,514	669,266	30,479,357	34,211,218
Oregon.....	6,900	164,460	143,421	187,820	13,629,983	16,689,927
Pennsylvania.....	46,928	1,709,677	1,448,521	2,339,198	109,468,075	134,080,513
Rhode Island.....	3,013	101,643	84,974	147,502	7,135,714	7,968,447
South Carolina.....	10,861	479,309	345,885	586,426	9,567,519	9,597,968
South Dakota.....	7,765	157,483	127,675	181,186	15,552,102	17,769,558
Tennessee.....	14,841	642,126	455,490	721,273	15,455,845	15,631,299
Texas.....	32,137	1,164,512	960,438	1,490,170	52,452,075	53,480,715
Utah.....	3,997	123,427	105,606	141,344	9,959,777	9,986,957
Vermont.....	2,899	63,439	55,818	84,526	4,129,358	4,534,059
Virginia.....	15,621	546,035	398,611	705,698	21,212,606	21,855,985
Washington.....	9,200	301,800	238,036	324,512	20,633,324	31,523,312
West Virginia.....	12,869	363,391	292,610	464,547	18,616,312	19,676,504
Wisconsin.....	17,672	500,937	423,010	693,304	40,146,691	49,540,447
Wyoming.....	2,504	47,988	37,418	51,431	5,067,272	5,564,113
<i>Outlying possessions</i>						
Canal Zone.....	104	8,706	2,862	.....	197,459	206,469
Guam.....	67	2,376	1,954	.....	24,350	28,517
Hawaii.....	1,319	44,256	43,779	.....	3,324,689	3,470,874
Philippine Islands.....	23,367	1,077,342	888,838	.....	7,491,964	7,285,860
Porto Rico.....	3,793	214,387	182,936	.....	4,609,084	3,172,113
Virgin Islands.....	110	3,112	2,987	.....	94,699	94,699

TABLE 11.—Summary of averages and percentages by States, 1921-22

States	Per cent of school population, 5 to 17 years, inclusive, in daily attendance	Number of days schools were in session	Average number of days attended by each pupil enrolled	Average number of years of school life on basis of a 180-day year	Per capita (of population) expenditures for public school education	Per cent outlays are of total current expenses and outlays	Same for cities of 2,500 population and over
1	2	3	4	5	6	7	8
Continental United States	64.4	164.0	130.6	6.92	\$14.47	19.35	20.10
Alabama.....	54.8	130.8	95.8	4.05	5.34	18.07	9.00
Arizona.....	52.9	170.0	131.0	4.94	19.22	19.30	15.90
Arkansas.....	63.2	130.4	94.1	4.63	4.91	13.30	4.20
California.....	80.3	179.0	126.0	7.42	25.30	32.50	29.10
Colorado.....	70.0	174.1	123.2	6.89	19.85	13.60	18.30
Connecticut.....	68.2	184.3	152.1	6.84	14.72	12.20	14.80
Delaware.....	56.2	180.2	137.5	7.42	10.80	6.30	2.50
District of Columbia.....	72.4	178.0	149.1	8.08	13.08	18.90	18.80
Florida.....	62.9	135.7	103.1	5.26	9.54	12.60	13.70
Georgia.....	55.8	140.0	102.6	4.84	4.55	12.70	12.10
Idaho.....	71.7	169.0	132.9	8.08	20.81	12.50	10.40
Illinois.....	65.8	180.4	153.0	8.36	15.40	19.90	9.30
Indiana.....	68.9	163.7	137.8	7.31	21.19	21.00	29.20
Iowa.....	72.6	178.7	143.5	8.68	20.21	18.40	18.60
Kansas.....	72.7	165.0	135.1	7.74	19.18	17.70	25.60
Kentucky.....	60.4	125.0	92.3	4.35	5.78	11.20	8.60
Louisiana.....	52.2	148.6	112.4	5.07	8.97	19.70	10.70
Maine.....	69.4	174.0	150.3	8.78	10.67	4.80	6.00
Maryland.....	53.9	181.3	143.3	7.00	9.88	17.30	17.60
Massachusetts.....	63.8	180.0	149.2	9.08	14.41	9.70	12.10
Michigan.....	61.8	194.1	155.6	7.79	18.70	28.80	29.30
Minnesota.....	70.9	169.6	142.5	7.45	21.16	25.40	22.20
Mississippi.....	65.6	136.8	94.8	4.22	5.24	6.50	15.50
Missouri.....	67.5	167.7	132.0	7.58	11.94	20.90	14.60
Montana.....	65.1	171.0	139.0	7.55	23.55	17.60	19.30
Nebraska.....	74.9	171.0	140.1	7.66	23.19	13.90	30.00
Nevada.....	73.2	169.3	137.1	7.64	21.62	9.00	1.10
New Hampshire.....	57.5	171.0	147.3	8.51	10.94	6.20	36.10
New Jersey.....	64.2	188.7	156.0	8.81	19.29	22.50	17.20
New Mexico.....	50.1	170.5	117.5	6.83	14.00	15.90	9.60
New York.....	62.3	185.0	154.1	8.59	17.12	16.10	15.90
North Carolina.....	62.6	139.0	100.7	5.10	8.33	26.20	30.50
North Dakota.....	77.1	147.2	136.5	7.66	23.19	10.40	1.49
Ohio.....	69.5	174.4	149.8	7.87	19.38	27.30	28.79
Oklahoma.....	64.5	160.0	108.3	6.69	14.35	12.50	17.63
Oregon.....	76.4	168.6	147.0	8.56	16.79	11.60	15.93
Pennsylvania.....	61.9	179.3	151.9	7.95	12.17	15.50	13.46
Rhode Island.....	57.6	194.6	162.7	7.96	11.50	14.50	7.31
South Carolina.....	59.0	110.5	79.8	4.24	5.54	17.50	3.70
South Dakota.....	70.5	168.1	136.3	6.80	23.92	23.80	24.77
Tennessee.....	63.1	140.6	99.8	5.45	6.38	20.20	11.99
Texas.....	65.8	136.5	112.4	5.74	10.79	14.40	8.01
Utah.....	74.7	164.3	140.5	8.97	21.24	22.70	20.16
Vermont.....	66.0	164.9	145.1	7.85	11.72	1.60	3.70
Virginia.....	56.5	159.1	116.1	5.37	8.94	27.20	33.03
Washington.....	73.4	177.8	140.3	7.86	20.99	20.20	18.63
West Virginia.....	64.4	143.1	115.2	5.69	12.20	13.40	12.30
Wisconsin.....	61.0	177.7	150.1	8.30	14.82	17.50	16.56
Wyoming.....	72.7	167.2	130.4	7.08	24.49	20.20	39.38

1 Estimated.

TABLE 12.—*Grade enrollment by color in 12 States—Alabama, Delaware, District of Columbia, Florida, Georgia, Maryland, Oklahoma, South Carolina, Tennessee, Texas, Virginia, West Virginia—1921-22*

Grade	White		Colored	
	Number	Per cent	Number	Per cent
Kindergarten.....	9,912	0.23	1,879	0.14
First.....	942,463	21.84	467,834	35.05
Second.....	565,472	13.11	233,410	17.49
Third.....	545,532	12.64	199,238	14.93
Fourth.....	514,640	11.93	160,537	12.03
Fifth.....	456,222	10.57	114,678	8.59
Sixth.....	390,161	9.04	74,282	5.56
Seventh.....	331,778	7.69	45,022	3.37
Eighth.....	110,779	2.57	7,959	.60
High school:				
First.....	199,730	4.63	15,811	1.18
Second.....	122,614	2.84	8,010	.60
Third.....	76,210	1.77	3,954	.30
Fourth.....	49,132	1.14	2,153	.16
Total.....	4,314,562		1,334,767	
Number, age 5-17, inclusive.....	5,136,544	84.0	1,869,174	21.4

### CITY SCHOOL SYSTEMS

The principal facts concerning city school systems are given by States in Table 13. In Table 14, 3,320,462 pupils of both sexes are distributed by age and grade. These 830 cities are all organized upon the 8-4 plan, or upon some similar plan that has eight grades in the elementary schools and four in the high schools, such as 6-6, 6-4-2, 6-3-3, or 6-2-4. Taking 6 and 7 years of age as normal for the first grade, 65.7 per cent of all are of normal age for the grade in which they are reported, 12 per cent are less than normal age, and 22.4 per cent are over age. The great number of pupils 21 years of age and over in the elementary grades is partly due to the enrollment of adult foreigners who are studying English. The cities of California report the greater portion of these adults. The peak of school enrollment is reached at age 8.

In Table 15 the pupils are tabulated according to normal age, under age, and over age, and in Table 16 the percentage is given for each group. Nine and five-tenths per cent of the first grade are under age, most of them only one year. This drops to 8.9 per cent for the second year and then steadily increases to 22.2 per cent for the twelfth grade. Those two or more years under age increase from 0.1 per cent in the first grade to 4.1 per cent in the twelfth grade. Overageness increases from 13.1 per cent in the first grade to 30.8 per cent in the fifth and then decreases to 14.7 per cent in the twelfth grade. The percentage two years over age is greatest in the fifth grade, 8.6 per cent, and so is that for three years over age, 4 per cent. The percentage of normal age is highest, 77.4 in the first grade and lowest 58.7, in the fifth grade.



It should be observed that there are more under age than over age in the first grade and in each year of the high school. The ratio of total over age one year to total under age one year is about as 5 to 4. No data are presented to show the relationship existing between overageness and retardation, nor between underageness and acceleration. These items are left for further study.

The increase in percentage of children 13 and 14 years of age in school as shown in Table 17 and in Figure 4 is due probably to pupils from rural districts who attend high schools in the cities. These children are not counted in the school census, but do appear as students enrolled.

TABLE 13.—Summary of school statistics of cities of 2,500 population and over, 1921-22

States	Day schools									
	Number of school systems	Teachers		Enrollment		Average daily attendance	Value of school properties (thousands of dollars)	Total current expenses	Outlays	
		Men	Women	Boys	Girls					
1	2	3	4	5	6	7	8	9	10	
Continental United States.....	2,801	31,372	263,909	5,142,505	8,483,084	\$170,985,092	3,045,975	301,315		
Alabama.....	39	180	2,191	51,111	82,785	8,410	2,542,827	477,638		
Arizona.....	16	105	946	18,172	17,700	8,197	2,366,029	106,806		
Arkansas.....	41	201	1,532	34,612	58,034	7,365	41,478,102	17,074,708		
California.....	106	2,051	13,928	259,366	395,519	111,221	6,706,401	1,508,500		
Colorado.....	27	410	3,051	51,984	84,376	17,176	14,977,246	2,603,737		
Connecticut.....	76	575	6,722	123,890	202,139	47,463	1,104,831	1,079,502		
Delaware.....	4	39	429	7,704	13,645	2,828	4,643,017	1,432,797		
District of Columbia.....	1	257	1,967	34,082	58,292	15,242	2,705,727	765,875		
Florida.....	30	157	1,874	36,900	60,824	9,710	5,511,166	296,965		
Georgia.....	59	383	3,467	72,316	126,039	14,168	2,532,633	10,141,470		
Idaho.....	20	117	896	17,405	29,639	7,001	49,682,581	8,116,207		
Illinois.....	176	1,909	18,338	366,126	605,018	153,248	19,623,850	2,999,262		
Indiana.....	93	1,245	7,078	138,305	233,920	58,955	12,042,530	3,007,508		
Iowa.....	82	525	6,389	85,640	149,218	49,314	8,721,011	369,063		
Kansas.....	62	476	3,633	68,809	114,816	25,308	4,941,747	438,244		
Kentucky.....	51	291	2,569	54,116	90,057	14,504	3,653,677	281,353		
Louisiana.....	38	227	2,551	47,644	79,554	11,360	4,399,674	1,663,888		
Maine.....	56	232	2,340	39,724	65,739	11,401	7,745,253	6,571,712		
Maryland.....	17	469	3,183	64,643	106,287	13,621	47,376,753	21,535,875		
Massachusetts.....	169	1,730	17,428	320,501	544,246	135,163	33,129,833	4,903,949		
Michigan.....	94	1,374	10,866	202,860	326,833	104,909	17,148,049	3,352,746		
Minnesota.....	59	586	5,840	99,510	169,267	46,917	1,921,985	3,189,644		
Mississippi.....	32	88	1,316	27,521	30,411	7,659	18,645,493	778,746		
Missouri.....	63	819	6,793	136,705	223,104	53,845	3,243,428	3,039,189		
Montana.....	17	66	1,081	18,042	29,075	8,952	7,072,919	251		
Nebraska.....	31	203	2,570	45,286	75,032	20,480	2,367,688	1,339,717		
Nevada.....	3	14	115	2,044	3,129	600	38,368,073	7,972,851		
New Hampshire.....	27	129	1,183	18,952	32,282	6,821	1,003,201	107,589		
New Jersey.....	124	1,399	13,207	255,682	402,804	110,409				
New Mexico.....	12	57	396	8,028	12,403	2,600				

New York.....	171	37,970	737,032	1,229,182	300,178	128,838,948	24,376,411
North Carolina.....	55	2,791	56,902	95,575	13,702	4,426,939	1,945,868
North Dakota.....	12	563	9,932	15,396	4,428	1,500,944	23,553
Ohio.....	145	17,501	328,708	565,258	175,023	52,733,133	21,316,472
Oklahoma.....	63	3,819	72,087	121,638	28,399	9,129,897	1,953,353
Oregon.....	23	2,061	39,583	64,648	15,169	5,419,225	1,026,584
Pennsylvania.....	313	22,894	511,606	864,964	186,698	62,103,286	9,664,241
Rhode Island.....	27	2,678	49,487	81,245	14,904	6,106,412	481,364
South Carolina.....	32	1,505	32,350	52,819	8,584	1,815,394	69,688
South Dakota.....	14	665	16,873	19,150	6,079	2,005,141	633,341
Tennessee.....	47	332	60,856	99,641	13,051	4,497,351	567,147
Texas.....	188	893	167,772	262,694	37,357	12,999,522	1,128,460
Utah.....	17	266	7,746	11,736	11,076	3,784,174	955,418
Virginia.....	30	72	13,129	22,607	4,394	1,628,076	61,523
Washington.....	39	297	58,551	105,845	15,314	5,483,932	2,708,469
West Virginia.....	35	574	70,110	121,769	31,784	11,493,570	2,030,666
Wisconsin.....	82	741	111,832	189,378	52,499	17,240,608	4,019,258
Wyoming.....	8	29	7,444	12,388	3,709	1,181,963	600,830

TABLE 14.—Age-grade enrollment of pupils in 830 cities of 2,500 population and over reporting eight years in elementary grades and four years in high school, 1919-20

Grade	Age												Total						
	4	5	6	7	8	9	10	11	12	13	14	15		16	17	18	19	20	21 and over
One.....	574	47,036	250,256	139,085	43,812	13,344	4,754	1,774	1,016	509	253	124	31	10	10	14	4	191	502,797
Two.....	3	830	33,492	159,467	116,511	40,147	16,810	6,338	2,803	1,140	530	200	53	16	3	5	3	37	384,394
Three.....	1	16	1,245	32,768	136,577	106,617	52,955	21,900	9,761	4,153	1,691	584	176	38	19	11	6	48	368,654
Four.....				1,869	24,163	122,858	100,277	54,477	28,500	12,940	6,471	1,996	420	63	23	10	2	13	369,106
Five.....		1	55	78	2,398	14,592	110,565	96,211	57,938	30,417	13,998	5,075	922	132	59	17	2	10	352,419
Six.....			2	5	137	3,101	33,708	102,385	91,219	55,587	27,528	10,266	2,025	74	22	9	20	20	326,384
Seven.....					8	136	3,379	33,042	91,172	81,538	46,571	19,130	4,556	708	118	31	11	13	286,413
Eight.....					2	8	3,194	33,042	91,172	79,700	68,824	34,570	10,398	325	83	19	92	231,177	
Nine.....					1	1	7	3,271	4,871	31,996	74,090	60,065	28,549	7,832	2,008	623	204	189	208,219
Ten.....					1	1	2	17	310	4,000	22,379	49,319	37,511	15,958	4,650	1,246	388	198	135,978
Eleven.....								1	2	3,422	16,056	33,817	25,602	9,911	3,056	895	433	93	93,521
Twelve.....									2	16	3,236	2,734	13,339	26,432	19,779	7,623	2,344	875	73,399
Total.....	578	47,883	285,050	333,270	333,608	326,804	322,652	320,326	318,807	301,922	264,992	200,119	129,795	79,047	36,979	12,051	3,860	9,119	3,820,402

TABLE 15.—Number of pupils of normal age, of more than normal age, and of less than normal age for their respective grades in all cities reporting eight years in elementary grades and four years in high school, 1919-20

Grade—	Total of all ages	Of normal age	Overage						Underage		
			1 year	2 years	3 years	4 years	5 years or more	Total	1 year	2 years or more	Total
One.....	502,797	389,341	43,812	13,344	4,754	1,774	2,162	65,846	47,036	574	47,610
Two.....	384,394	275,978	46,147	16,810	6,338	2,803	1,993	74,091	33,492	833	34,325
Three.....	368,654	243,194	52,955	21,990	9,761	4,153	2,573	91,432	32,766	1,262	34,028
Four.....	363,108	223,135	54,477	28,500	12,940	5,471	2,497	103,885	34,163	1,925	36,088
Five.....	352,419	206,777	57,938	30,417	13,998	5,075	1,144	108,572	34,592	2,478	37,070
Six.....	320,384	193,604	55,587	27,528	10,296	2,025	393	95,829	33,708	3,243	36,951
Seven.....	280,413	172,710	46,571	19,130	4,556	708	173	71,138	33,042	3,523	36,565
Eight.....	231,177	148,524	34,570	10,396	1,948	325	194	47,433	31,196	4,024	35,220
Nine.....	208,219	134,155	26,549	7,852	2,008	523	393	37,325	31,588	5,151	36,739
Ten.....	135,978	86,830	15,958	4,650	1,246	388	198	22,440	22,379	4,329	26,708
Eleven.....	93,521	59,419	9,911	3,066	866	433	-----	14,276	16,056	3,770	19,826
Twelve.....	73,399	46,231	7,623	2,344	1,875	-----	-----	10,842	13,330	2,987	17,326
Total.....	3,320,463	2,179,898	452,098	186,027	69,586	23,678	11,720	743,109	363,357	34,099	397,456

<sup>1</sup> Three years and over.  
<sup>2</sup> Four years and over.

TABLE 16.—Percentage of pupils who are of normal age, over normal age, and under normal age for their respective grades in all cities reporting eight years in elementary grades and four years in high school, 1919-20

Grade—	Normal age	Overage						Underage		
		1 year	2 years	3 years	4 years	5 years or more	Total	1 year	2 years or more	Total
One.....	77.44	8.71	2.65	0.95	0.35	0.43	13.09	9.36	0.11	9.47
Two.....	71.79	12.01	4.37	1.65	.73	.52	19.28	8.71	.22	8.93
Three.....	65.97	14.36	5.96	2.65	1.13	.70	24.80	8.89	.34	9.23
Four.....	61.45	15.00	7.85	3.56	1.51	.69	28.61	9.41	.53	9.94
Five.....	58.67	16.44	8.63	3.97	1.44	.33	30.81	9.82	.70	10.52
Six.....	59.32	17.03	8.44	3.15	.62	.12	29.36	10.33	.99	11.32
Seven.....	61.59	16.61	6.82	1.63	.25	.06	25.37	11.78	1.26	13.04
Eight.....	64.25	14.96	4.50	.84	.14	.08	20.52	13.49	1.74	15.23
Nine.....	64.43	12.75	3.77	.97	.25	.19	17.93	15.17	2.47	17.64
Ten.....	63.86	11.74	3.42	.92	.28	.14	16.50	16.46	3.18	19.64
Eleven.....	63.54	10.60	3.28	.92	.46	-----	15.26	17.17	4.03	21.20
Twelve.....	62.99	10.39	3.19	1.19	-----	-----	14.77	18.17	4.07	22.24
Total.....	65.65	13.62	5.60	2.10	.71	.35	22.38	10.94	1.03	11.97

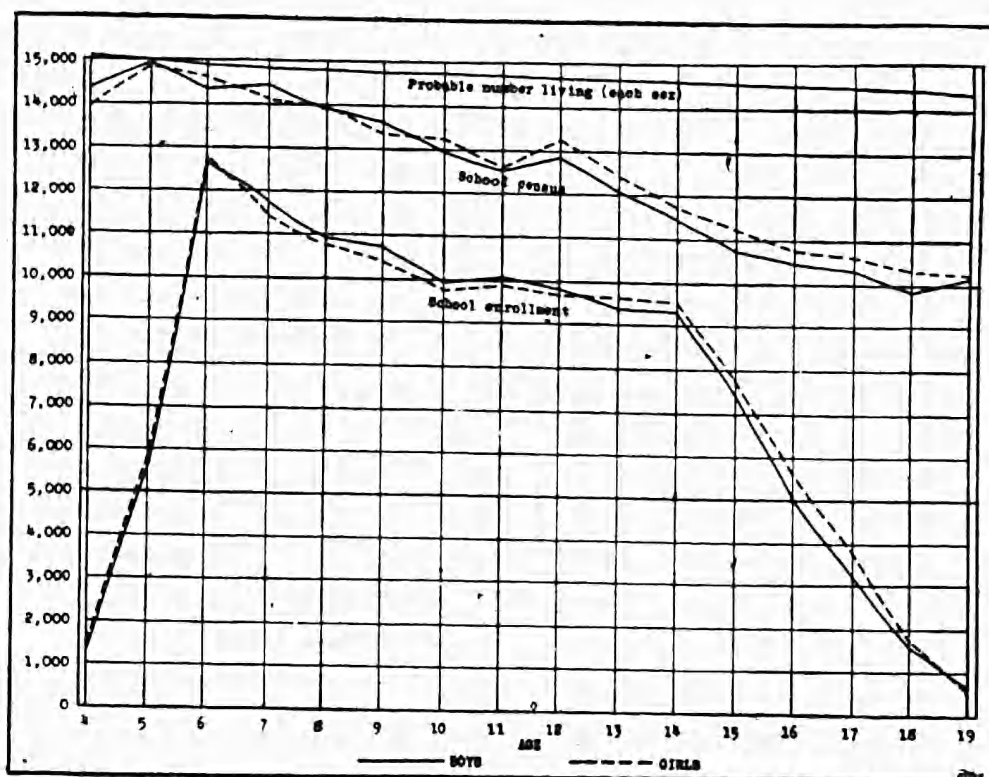


FIG. 4.—Percentage enrollment was of school census, 4-19

TABLE 17.—School census and enrollment, ages 4 to 19, inclusive, in 56 cities, 1920

Ages	Probable number of each sex living at each age starting with 15,000 at age 5	School census		School enrollment		Percentage enrollment is of school census	
		Boys	Girls	Boys	Girls	Boys	Girls
Four.....	15,085	14,357	13,970	1,342	1,423	9.3	10.2
Five.....	15,000	14,954	14,865	5,643	5,783	37.7	38.9
Six.....	14,930	14,380	14,637	12,645	12,766	87.9	87.2
Seven.....	14,871	14,490	14,118	11,730	11,428	81.0	80.9
Eight.....	14,823	13,946	13,998	10,928	10,766	77.6	76.9
Nine.....	14,781	13,631	13,309	10,780	10,411	79.1	78.2
Ten.....	14,745	12,966	13,239	9,937	9,764	76.6	73.8
Eleven.....	14,711	12,509	12,615	10,072	9,897	80.5	78.5
Twelve.....	14,679	12,864	13,252	9,822	9,670	76.4	73.0
Thirteen.....	14,646	12,093	12,424	9,381	9,616	77.6	77.4
Fourteen.....	14,612	11,484	11,723	9,325	9,620	81.2	82.1
Fifteen.....	14,574	10,743	11,243	7,436	7,720	69.2	68.7
Sixteen.....	14,533	10,476	10,791	5,028	5,616	48.0	52.0
Seventeen.....	14,486	10,308	10,642	3,180	3,760	30.8	35.3
Eighteen.....	14,436	9,834	10,314	1,598	1,757	16.2	17.0
Nineteen.....	14,390	10,186	10,260	695	559	6.8	5.5
Total.....	235,302	199,221	201,390	119,542	120,554		

## SECONDARY SCHOOLS

In Table 18 enrollments for secondary students are stated for the four types of secondary schools that report to the bureau. The enrollments in public and in private high schools are those reported by State departments of education, and the totals are slightly higher than those made from reports of the high schools. This difference is due largely to the fact that some secondary schools do not report fully to the bureau.

Table 19 is made by combining Table 32 of the bulletin, Statistics of Public High Schools, with Table 15 of the bulletin, Statistics of Private High Schools and Academies. The graph given on page 24 shows trends in the study of foreign languages since 1900.

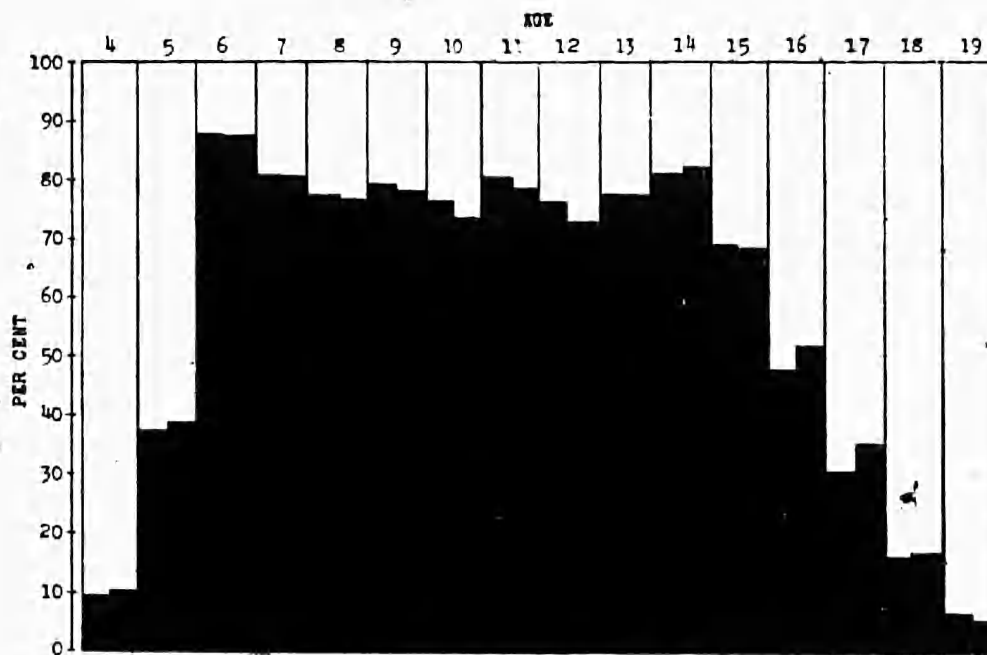


FIG. 5.—School census and enrollment

From 1900 to 1910 about one-half of the high-school students studied Latin. In 1915 the percentage had dropped to 39, and in 1922 to 29 per cent. During this time all modern foreign languages showed increased numbers excepting that German almost dropped out of the course of study during the World War period. Figure 6 shows these changes graphically. To get a true comparison of the distribution of students among the language classes, the length of the language course needs to be considered. The typical Latin course covers four years, the typical Spanish course two years. There are variations from these types; the average Latin course is a little over three years and the average modern foreign language course is a little over two years. Eighty per cent of the students carried some foreign language 20 years ago; now only 60 per cent carry a foreign language. It would seem from the figures presented that enrollments in ancient

languages are decreasing rapidly, while enrollments in modern foreign languages are on the increase. The large enrollment in German in 1915 does not seem to have been wholly replaced by enrollments in other foreign languages, although 3,310 students, 1.4 per cent, were enrolled in some modern foreign language other than those included in the tabulations.

The figures given for English represent the number of students studying one or more courses in secondary English, and are not comparable with those published for previous years.

There is a decided drop in the percentage of students studying physics. Decreases are noticed also in zoology, botany, and physiology. These decreases seem to be partly offset by an increase in enrollment in biology, a fairly large enrollment in hygiene and sanitation, and a very large enrollment in general science. The percentage of all students enrolled in science, either including or excluding agriculture, is not as large as it was in 1915, although the decrease need not be alarming to those interested in science courses. Enrollments in social sciences and government show increases.

The schools reporting show a large enrollment in commercial subjects. Nine per cent of the students were enrolled in shorthand, and 13 per cent in typewriting. The enrollment in salesmanship includes 5,546 students in public high schools and 85 students in private high schools, which is only one student out of each 500 enrolled in secondary schools. Decreases are noted also in both algebra and geometry. It seems that the elective system practiced in most high schools and the choice of subjects offered for college entrance have permitted the student to make his own selection, with the result that the older high-school subjects, Latin, mathematics, and physics, have not held the enrollment in 1922 as these subjects did in former years. It is not possible to make this statement with respect to English and history, since the method of collecting statistics in these two subjects is different in 1922 from the method employed at previous periods.

TABLE 18.—Summary of enrollment of secondary students, 1921-22

States	In public high schools 1			In private high schools and academies 2			In preparatory departments of universities, colleges, and professional schools			In secondary departments of teachers' colleges and normal schools			In all secondary schools		
	Male	Female	Total	Male	Female	Total	Male	Female	Total	Male	Female	Total	Male	Female	Total
	2	3	4	5	6	7	8	9	10	11	12	13	14	15	16
Continental United States	1,354,328	1,518,681	2,873,009	114,802	111,071	225,873	45,782	21,867	67,649	14,874	22,736	37,610	1,529,786	1,674,355	3,204,141
Alabama.....	21,825	25,579	47,404	2,573	2,676	5,249	656	277	933	928	1,104	2,032	25,982	29,636	55,618
Arizona.....	3,583	3,983	7,566	121	203	324	589	451	1,040	76	135	211	3,780	4,321	8,101
Arkansas.....	17,836	17,817	35,653	1,977	275	472	589	451	1,040	195	221	416	18,817	18,764	37,581
California.....	113,534	113,736	227,270	6,362	6,777	13,139	1,603	849	2,452	473	590	1,063	121,972	121,852	243,824
Colorado.....	18,194	28,811	39,005	177	653	830	733	122	855	143	302	445	19,247	21,988	41,235
Connecticut.....	20,078	17,924	38,002	2,898	2,801	5,699	69	2	71	0	14	14	23,045	20,741	43,786
Delaware.....	2,188	2,449	4,637	239	139	378	133	0	133	0	0	0	2,560	2,588	5,148
Dist. of Columbia.....	4,927	6,066	10,993	287	1,557	1,844	26	18	44	0	0	0	5,240	7,641	12,881
Florida.....	7,473	10,045	17,518	408	670	1,078	400	348	548	0	0	0	8,281	10,863	19,144
Georgia.....	25,491	28,938	54,429	1,370	2,030	3,400	2,183	795	2,978	193	455	648	29,237	32,218	61,455
Idaho.....	8,504	9,906	18,410	181	346	527	179	110	289	288	295	553	9,152	10,627	19,779
Illinois.....	78,389	84,708	163,097	12,429	12,824	25,253	3,781	1,770	5,551	608	546	1,154	95,207	99,848	195,055
Indiana.....	46,726	50,204	96,930	1,807	1,415	3,222	1,977	505	702	773	73	846	49,503	52,197	101,700
Iowa.....	66,831	74,461	141,292	1,608	3,270	4,878	2,066	539	2,596	132	138	270	70,637	78,399	149,036
Kansas.....	32,607	40,167	72,774	1,198	1,780	2,953	1,158	316	1,474	1,048	916	1,964	36,006	43,159	79,165
Kentucky.....	14,590	19,695	34,285	1,474	2,492	3,966	1,342	1,039	2,381	217	459	676	17,623	23,685	41,308
Louisiana.....	13,176	19,384	32,560	1,244	1,359	2,603	354	257	611	102	170	272	14,876	21,170	36,046
Maine.....	11,661	13,716	25,377	1,483	935	2,418	30	30	60	0	0	0	13,174	14,651	27,825
Maryland.....	9,829	11,763	21,592	1,480	1,142	2,622	614	351	965	18	32	50	11,941	13,288	25,229
Massachusetts.....	56,040	58,742	114,782	6,091	6,091	12,182	1,688	158	1,846	0	0	0	63,819	64,991	128,810
Michigan.....	41,745	52,871	94,616	3,332	4,161	7,493	784	322	1,106	206	163	369	46,967	57,517	103,484
Minnesota.....	31,960	39,961	71,921	2,204	3,136	5,340	2,514	626	3,140	163	384	547	36,841	44,107	80,948
Mississippi.....	13,869	16,167	30,036	1,657	1,333	2,990	582	427	1,009	77	79	156	16,185	18,006	34,191
Missouri.....	44,448	43,918	88,366	2,668	2,297	4,965	1,692	1,309	3,001	654	1,135	789	49,462	48,659	98,121
Montana.....	8,440	10,071	18,511	334	582	916	288	38	326	22	132	154	9,084	10,823	19,907



Nebraska.....	21,735	1,248	1,786	3,034	1,266	707	1,973	394	681	1,071	24,639	39,179	54,818
Nevada.....	1,324	0	0	0	0	0	0	0	0	0	1,168	1,324	2,492
New Hampshire.....	4,484	9,968	424	10,422	200	0	200	0	0	0	14,682	5,615	20,297
New Jersey.....	34,903	4,218	2,684	6,902	331	14	345	0	0	0	39,452	37,845	77,297
New Mexico.....	3,361	125	255	380	236	31	267	314	735	1,049	4,036	5,035	9,071
New York.....	125,048	15,413	13,436	28,849	4,257	2,578	6,835	654	772	1,426	145,372	147,283	292,655
North Carolina.....	17,280	2,369	2,844	5,213	885	680	1,565	572	1,233	1,805	21,106	26,646	47,752
North Dakota.....	8,777	105	314	419	412	235	647	203	201	494	9,497	12,927	22,304
Ohio.....	87,263	3,462	4,817	8,279	2,413	536	2,949	15	238	253	93,183	98,493	192,626
Oklahoma.....	27,525	34,494	500	1,000	951	732	1,683	1,588	2,730	4,318	30,564	38,456	69,020
Oregon.....	14,076	230	493	723	472	364	826	0	101	101	14,778	17,078	31,856
Pennsylvania.....	91,748	7,687	7,705	15,392	3,481	788	4,269	319	733	1,052	103,235	112,330	215,565
Rhode Island.....	5,417	1,211	863	2,074	17	0	17	0	6	6	6,845	6,617	13,262
South Carolina.....	12,025	1,332	768	2,100	343	302	645	284	735	1,019	13,964	13,744	27,728
South Dakota.....	8,469	324	411	735	538	240	778	306	564	870	9,637	12,429	22,066
Tennessee.....	19,375	2,453	1,786	4,239	1,303	745	2,048	764	567	1,331	23,895	28,089	51,984
Texas.....	53,434	1,672	2,192	3,864	1,093	1,528	2,621	369	492	861	56,968	67,865	124,433
Utah.....	9,486	1,819	1,204	2,023	1,309	107	2,167	142	197	339	11,756	12,480	24,236
Vermont.....	6,458	1,038	1,248	2,286	83	0	93	0	0	0	7,589	7,478	15,067
Virginia.....	15,308	2,932	1,697	4,029	488	594	1,082	818	1,778	2,596	19,546	22,069	41,615
Washington.....	29,069	807	1,123	1,930	644	89	733	111	1,138	1,249	27,081	31,419	58,500
West Virginia.....	10,592	1,279	1,278	2,557	126	107	233	661	1,809	2,470	12,658	18,422	31,060
Wisconsin.....	34,360	1,692	2,207	3,899	1,233	275	1,508	1,048	623	1,671	38,333	44,447	82,780
Wyoming.....	2,543	71	112	183	30	44	74	0	0	0	2,644	3,376	6,020
Outlying possessions													
Canal Zone.....	158										98	158	256
Guam.....	17										10	17	27
Hawaii.....	807	499	314	813				10	230	240	1,295	1,351	2,856
Philippine Islands.....	7,189	9,450	2,550	12,000							27,216	9,739	36,955
Porto Rico.....	2,739	207	329	536	333	381	714				10,282	3,449	13,731
Virgin Islands.....	31										31	31	62

<sup>1</sup> From State reports.

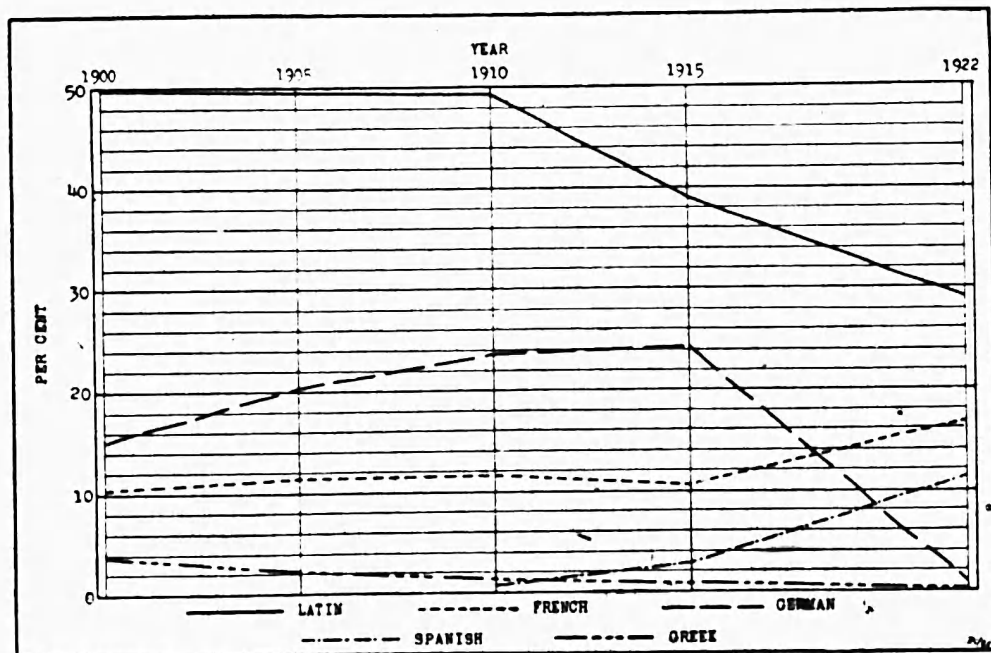


FIG. 6.—Students of foreign languages in public and private high schools



TABLE 19.—Students in certain studies in public and in private high schools combined—Continued

Studies	1890		1895		1900		1905		1910 <sup>1</sup>		1915		1922	
	Students	Per cent of total	Students	Per cent of total	Students	Per cent of total	Students	Per cent of total	Students	Per cent of total	Students	Per cent of total	Students	Per cent of total
Students in—Continued.														
Drawing.....													346,941	14.85
Music.....													525,735	22.51
Arithmetic.....													248,249	10.63
Bookkeeping.....													289,005	12.37
Shorthand.....													208,216	8.91
Typewriting.....													303,535	13.00
Commercial arithmetic.....													32,536	1.39
Commercial law.....													20,520	.88
Commercial geography.....													37,300	1.60
Commercial history.....													8,363	.36
Fenmanship.....													37,188	1.59
Other commercial subjects.....													28,248	1.21

<sup>1</sup> Beginning with 1910, percentages are computed upon basis of number of pupils in the schools reporting by subject; previous to that time upon total number of pupils in a high schools reporting.

TEACHER TRAINING SCHOOLS

In Table 20 is given a summary of the statistics of all schools whose chief business is to prepare teachers for public and other schools. Pupils in the normal departments of high schools are not included. In 1922 there were 21,689 high-school students enrolled in classes studying principles of teaching. The course is generally completed in one year, and the rural schools absorb most of the graduates.

TABLE 20.—Summary of statistics of teachers colleges,<sup>1</sup> State normal schools, city normal schools, county normal schools, and private normal schools, 1921-22

States	Instructors			Teacher training students			All students			Receipts	Current expenses	Value of property
	Men	Women	Total	Men	Women	Total	Men	Women	Total			
Continental United States.....	4,194	6,556	10,750	32,694	161,840	194,534	47,568	124,576	232,144	\$41,239,750	\$30,257,506	\$126,025,125
Alabama.....	208	254	462	1,015	3,745	4,760	1,943	4,849	6,792	1,607,163	869,233	5,440,119
Arizona.....	24	35	59	105	446	551	181	581	762	491,857	357,826	1,419,253
Arkansas.....	27	26	53	228	760	988	423	681	1,404	156,274	140,445	504,992
California.....	103	218	321	328	4,524	4,852	801	5,114	5,915	1,291,764	944,321	2,993,105
Colorado.....	90	75	165	363	3,065	3,428	506	3,367	3,873	714,682	553,216	1,171,482
Connecticut.....	25	131	156	13	1,328	1,341	13	1,342	1,355	1,293,724	452,813	1,780,259
District of Columbia.....	4	33	37	3	354	357	3	354	357	75,026	75,756	265,000
Georgia.....	20	76	96	22	948	970	215	1,403	1,618	346,952	240,270	1,242,200
Idaho.....	41	59	100	185	957	1,142	473	1,222	1,695	346,241	304,383	1,435,516
Illinois.....	203	256	459	1,936	9,221	11,157	2,544	9,767	12,311	1,915,475	1,605,085	6,328,899
Indiana.....	114	175	289	2,960	6,436	9,426	3,763	6,509	10,272	640,979	575,844	3,410,296
Iowa.....	114	110	224	715	4,743	5,458	847	4,981	5,726	895,095	556,314	1,675,449
Kansas.....	139	133	272	1,166	5,486	6,652	2,214	6,402	8,616	1,063,201	824,802	3,931,000
Kentucky.....	89	107	196	1,016	2,763	3,779	1,233	3,222	4,455	612,863	428,837	1,113,220
Louisiana.....	38	41	79	244	1,519	1,763	346	1,689	2,035	419,690	328,924	706,429
Maine.....	15	80	95	79	1,260	1,329	79	1,250	1,329	202,784	130,409	905,475
Maryland.....	32	49	81	102	1,063	1,165	120	1,115	1,235	286,285	232,516	1,966,600
Massachusetts.....	112	269	381	483	4,493	4,976	493	4,493	4,976	1,560,155	1,423,218	5,310,356
Michigan.....	214	413	627	2,447	13,268	15,715	2,653	13,431	16,084	1,931,753	1,365,815	3,215,258
Minnesota.....	94	189	283	357	5,767	6,134	530	6,151	6,681	669,644	884,983	2,816,703

TABLE 20.—Summary of statistics of teachers colleges,<sup>1</sup> State normal schools, city normal schools, county normal schools, and private normal schools, 1921-22—Continued

States	Instructors			Teacher training students			All students			Receipts	Current expenses	Value of property
	Men	Women	Total	Men	Women	Total	Men	Women	Total			
Mississippi	14	24	38	300	1,164	1,464	377	1,243	1,620	472,532	203,029	777,132
Missouri	219	251	470	1,802	7,438	9,240	2,456	8,573	11,029	1,796,756	1,347,044	3,873,763
Montana	13	37	50	114	1,163	1,277	136	1,265	1,431	263,400	187,400	350,000
Nebraska	98	110	208	764	3,303	4,067	1,154	3,984	5,138	782,367	667,582	2,853,000
Nevada	0	2	2	3	9	12	3	9	12	4,230	4,230	4,230
New Hampshire	14	40	54	19	859	878	19	859	878	192,358	164,909	553,500
New Jersey	30	121	151	84	2,285	2,369	84	2,285	2,369	693,847	497,395	2,213,139
New Mexico	22	31	53	219	736	955	533	1,471	2,004	293,542	234,951	563,025
New York	223	519	742	1,205	10,096	11,301	1,859	10,898	12,727	2,308,753	1,903,735	7,607,800
North Carolina	73	128	201	501	1,570	2,071	1,073	2,803	3,876	1,133,710	565,700	3,137,680
North Dakota	72	124	196	404	2,985	3,389	607	3,276	3,883	827,946	625,868	2,838,771
Ohio	176	270	446	1,093	7,371	8,464	1,108	7,649	8,717	998,368	738,318	3,192,123
Oklahoma	188	123	311	2,032	5,976	8,008	3,620	8,486	12,106	655,300	608,062	1,773,150
Oregon	16	67	83	61	1,066	1,127	61	1,367	1,448	160,422	89,743	1,372,000
Pennsylvania	222	427	649	1,641	8,456	10,097	1,960	9,189	11,149	3,535,474	2,981,837	9,239,965
Rhode Island	7	74	81	3	448	451	3	454	457	91,313	93,062	1,350,000
South Carolina	44	23	67	73	842	915	323	802	1,125	112,195	93,346	711,275
South Dakota	91	158	249	561	1,813	2,374	901	3,152	4,053	741,472	676,770	2,346,000
Tennessee	130	135	265	1,474	5,623	7,097	2,248	6,190	8,428	1,132,228	593,809	6,253,257
Texas	294	251	545	3,303	9,017	12,323	3,675	9,500	13,184	1,688,674	1,414,228	3,243,690
Utah	14	7	21	10	11	21	152	208	360	16,830	32,644	320,000
Vermont	1	7	8	1	80	81	1	80	81	21,500	25,300	19,500
Virginia	142	298	440	247	4,819	5,066	1,065	6,597	7,662	2,420,185	1,134,715	9,455,044
Washington	65	172	237	384	3,271	3,655	409	4,409	4,824,630	824,236	544,236	2,169,961
West Virginia	100	93	193	384	1,700	2,131	1,062	3,560	4,601	1,035,183	631,993	4,536,031
Wisconsin	223	335	558	2,155	7,583	9,738	3,203	8,206	11,409	2,288,428	1,893,620	7,693,503

<sup>1</sup> See text for a statement of schools included.

UNIVERSITIES, COLLEGES, AND PROFESSIONAL SCHOOLS

In Table 21 is given a summary of the statistics of 780 institutions of higher education. Figure 7 shows graphically the enrollment of students according to the State in which the institution is located. Preparatory students have been excluded, but instructors of, and receipts from, such students are included in the summary table.

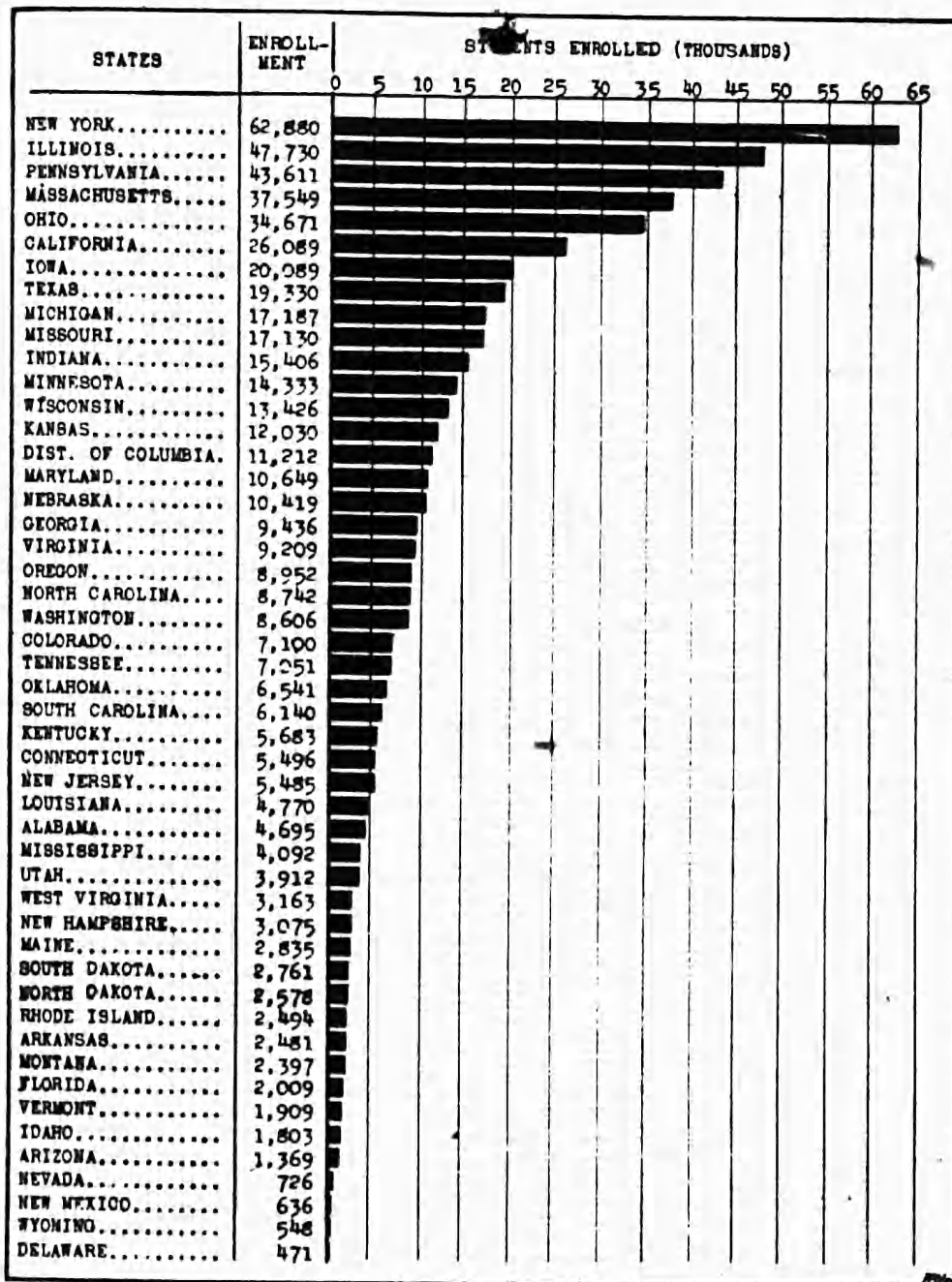


FIG. 7.—Students of universities, colleges, and professional schools

TABLE 21.—Summary of statistics of universities, colleges, and professional schools, 1921-22

States	Institutions	Professors and instructors			College students (not preparatory) <sup>1</sup>			Total receipts	Value of buildings and grounds
		Men	Women	Total	Men	Women	Total		
1	2	3	4	5	6	7	8	9	10
<b>Continental United States</b>	780	39,393	10,445	49,838	356,254	194,652	550,906	\$326,535,304	\$669,078,558
Alabama	12	329	121	450	3,158	1,537	4,695	2,530,170	5,621,760
Arizona	1	69	27	96	862	507	1,369	1,120,592	1,528,300
Arkansas	12	171	105	276	1,334	1,147	2,481	1,737,486	3,286,018
California	31	1,806	548	2,354	15,215	10,874	26,089	20,822,303	32,170,556
Colorado	8	420	123	543	4,908	2,192	7,100	2,937,942	6,237,689
Connecticut	5	579	41	620	4,834	662	5,496	15,321,906	23,866,053
Delaware	1	60	15	75	285	186	471	474,401	1,477,640
Dist. Columbia	10	932	78	1,010	8,790	2,422	11,212	1,997,708	7,181,229
Florida	4	112	71	183	959	1,050	2,009	1,476,808	2,726,624
Georgia	24	755	298	1,053	5,915	3,521	9,436	4,066,865	11,620,685
Idaho	4	127	40	167	1,062	741	1,803	1,292,372	1,517,000
Illinois	48	2,782	635	3,417	28,750	18,980	47,730	16,588,422	42,276,084
Indiana	22	842	294	1,136	9,916	5,490	15,406	7,006,755	12,279,988
Iowa	26	1,160	443	1,603	10,585	9,504	20,089	9,346,467	18,223,353
Kansas	18	676	268	944	6,711	5,319	12,030	5,763,952	9,535,608
Kentucky	19	499	163	662	3,636	2,047	5,683	3,355,423	7,843,702
Louisiana	8	558	115	673	3,549	1,221	4,770	3,584,338	5,347,031
Maine	5	193	19	212	2,112	723	2,835	1,628,189	4,443,529
Maryland	15	1,116	166	1,282	7,430	3,219	10,649	15,130,276	23,471,929
Massachusetts	30	2,744	564	3,308	26,763	10,786	37,549	31,596,464	61,349,927
Michigan	17	1,155	199	1,354	12,697	4,490	17,187	10,475,571	17,420,152
Minnesota	17	1,152	342	1,494	9,011	5,322	14,333	9,484,375	18,913,814
Mississippi	11	228	160	388	2,295	1,797	4,092	2,620,682	6,428,277
Missouri	37	1,229	403	1,632	11,151	5,979	17,130	7,252,747	16,907,062
Montana	5	147	45	192	1,441	956	2,397	2,040,741	2,517,932
Nebraska	13	623	212	835	5,755	4,664	10,419	4,008,419	8,910,766
Nevada	1	46	18	64	491	265	726	475,084	636,268
New Hampshire	3	271	8	279	2,861	214	3,075	2,657,367	5,425,023
New Jersey	11	511	48	559	4,928	557	5,485	4,069,781	5,686,387
New Mexico	3	59	14	73	418	218	636	653,168	1,078,607
New York	55	5,112	1,087	6,199	44,799	18,081	62,880	34,623,141	92,111,435
North Carolina	24	502	343	845	4,691	4,051	8,742	6,360,723	11,289,985
North Dakota	5	184	85	269	1,315	1,263	2,578	1,791,219	2,386,262
Ohio	44	2,279	579	2,858	20,223	14,438	34,671	14,347,696	34,828,851
Oklahoma	9	422	187	609	3,513	3,028	6,541	3,305,688	4,871,621
Oregon	14	459	177	636	5,456	3,496	8,952	3,753,760	6,304,280
Pennsylvania	55	3,638	596	4,234	30,909	12,702	43,611	21,777,192	57,886,397
Rhode Island	4	162	17	179	2,003	491	2,494	1,300,390	1,225,000
South Carolina	19	346	183	529	3,373	2,767	6,140	3,261,017	12,571,488
South Dakota	8	174	103	277	1,508	1,253	2,761	1,888,586	3,142,570
Tennessee	24	732	180	912	4,879	2,172	7,051	4,207,810	9,843,600
Texas	36	1,112	474	1,586	9,612	9,718	19,330	9,429,286	19,160,473
Utah	6	241	95	336	2,296	1,616	3,912	1,593,961	3,003,704
Vermont	4	196	24	220	1,278	631	1,909	1,487,347	2,848,325
Virginia	25	694	236	930	6,355	2,854	9,209	6,171,064	13,809,063
Washington	6	427	106	533	5,308	3,298	8,606	3,837,502	7,677,705
West Virginia	5	223	68	291	1,942	1,221	3,163	2,280,682	3,080,500
Wisconsin	15	1,094	293	1,387	8,690	4,736	13,426	8,680,155	15,666,997
Wyoming	1	45	29	74	302	246	548	622,301	1,441,200
<b>Outlying possessions</b>									
Hawaii	1	29	5	34	271	133	404	318,438	707,319
Porto Rico	1	57	36	93	251	100	411	301,386	291,250

<sup>1</sup> For number of preparatory students see columns 8, 9, and 10 of Table 18.