

College Readiness:
A Compendium of M-DCPS Results
From the
Florida College Placement Test
2007 to 2010

Principal Authors: Mr. Dale Romanik
 Ms. Mary Rembowski

Research Services
Assessment, Research, and Data Analysis
Miami-Dade County Public Schools
1500 Biscayne Boulevard, Suite 225
Miami, Florida 33132
May 2012

**The School Board
of Miami-Dade County, Florida**

Ms. Perla Tabares Hantman, Chair
Dr. Lawrence S. Feldman, Vice Chair
Dr. Dorothy Bendross-Mindingall
Mr. Carlos L. Curbelo
Dr. Renier Diaz de la Portilla
Dr. Wilbert "Tee" Holloway
Dr. Martin S. Karp
Dr. Marta Pérez
Ms. Raquel A. Regalado

Mr. Albert M. Carvalho
Superintendent of Schools

Ms. Debbie Karcher
Information Technology Services

Ms. Gisela Feild, Administrative Director
Assessment, Research, and Data Analysis

Mr. Dale Romanik, Director
Research Services

Table of Contents

Introduction.....	1
Miami-Dade County (Districtwide) Results.....	5
State of Florida Results.....	6
Readiness for College: Individual High School Results	
Academy for Community Education.....	7
Academy of Arts and Minds.....	8
American Senior High.....	9
George T. Baker Aviation.....	10
G. Holmes Braddock Senior High.....	11
Coral Gables Senior High.....	12
Coral Reef Senior High.....	13
Design & Architecture Senior High.....	14
Doctor's Charter of Miami.....	15
Doral Academy Charter.....	16
John A. Ferguson Senior High.....	17
Barbara Goleman Senior High.....	18
Hialeah Senior High.....	19
Hialeah-Miami Lakes Senior High.....	20
Homestead Senior High.....	21
International Studies Charter.....	22
Dr. Michael M. Krop Senior High.....	23
Maritime and Science Technology Academy.....	24
Mater Academy Senior High Charter.....	25
Mater Academy East Senior High Charter.....	26
Mater Academy Lakes Senior High Charter.....	27
Miami Beach Senior High.....	28
Miami Carol City Senior High.....	29
Miami Central Senior High.....	30
Miami Coral Park Senior High.....	31
Miami Edison Senior High.....	32
Miami Jackson Senior High.....	33
Miami Killian Senior High.....	34
Miami Lakes Educational Center.....	35
Miami Norland Senior High.....	36
Miami Northwestern Senior High.....	37
Miami Palmetto Senior High.....	38
Miami Senior High.....	39
Miami Southridge Senior High.....	40
Miami Springs Senior High.....	41
Miami Sunset Senior High.....	42
Robert Morgan Vocational Tech.....	43
New World School of the Arts.....	44
North Miami Senior High.....	45
North Miami Beach Senior High.....	46
Ronald W. Reagan / Doral Senior High.....	47
School for Advanced Studies, Homestead.....	48

School for Advanced Studies, North.	49
School for Advanced Studies, South.	50
School for Advanced Studies, Wolfson.	51
School for Applied Technology.	52
School for Integrated Academies and Technology.	53
South Dade Senior High.	54
South Miami Senior High.	55
Southwest Miami Senior High.	56
William Turner Technical Arts High.	57
Felix Varela Senior High.	58
Booker T. Washington Senior High.	59
Westland Hialeah Senior High.	60
Young Women’s Preparatory Academy.	61

Section 1008.30 (formerly 240.117), Florida Statutes, requires the State Board of Education to develop and implement a common placement testing program to assess the basic computation and communication skills of students who intend to enter a degree program at any public community college or state university.

Every year the State provides reports to districts and high schools on their graduates' performance on these entry-level placement tests administered at Florida public community colleges and state universities. All entering freshmen must demonstrate certain basic skills before beginning college-level courses. Students who meet minimum standards on the elementary Algebra, Reading Comprehension, and Sentence Skills portions of the Florida College Entry-Level Placement Test (CPT) are considered 'ready' for college-level math, reading, and writing, respectively. Students may be exempted from these tests if they score high enough on the SAT or ACT. Students who test below the cutoff score for an area are required to enroll in remedial coursework.

The students represented in this report are not a random sample of all Florida high school graduates nor a random sample of all M-DCPS graduates. This report focuses on the test results for students who:

- graduated during the 2006-07, 2007-08, 2008-09, and 2009-10 school year with a standard diploma and
- entered a Florida public university or community college as degree-seeking students

The report does not include graduates who do not go to college, graduates who attend private or out-of-state colleges, transfer students, casual or non-degree-seeking students, students who take time off between high school and college, GED or non-standard diploma recipients or private high school graduates.

The compendium is organized by M-DCPS senior high schools and includes the number of students tested as well as the percent of students scoring above the established criteria or cutoff established by Florida Statutes. These data are provided for four groups of students including: 1) Black, non-Hispanic; 2) White, non-Hispanic; 3) Hispanic; and 4) all students combined including students of other racial/ethnic groups. District and State figures are included on the first two pages of the compendium.

Please note beginning with the CPT results for 2004 graduates, the students' best test scores rather than the first test scores have been provided by the state. This revision should be considered when comparing year to year performance. The state maintains this change provides a more accurate representation of college readiness since it is this score that is used when making academic decisions about students.

Figure 1, indicates that the college readiness of M-DCPS graduates has been quite stable over the past four years as covered in this report. A slightly larger percentage of students (51.5%) graduating in 2010 and included in the state database, passed all three subject areas when compared to 2009 graduates (51.1%). Approximately 54.3 percent of Hispanic students passed all three subtests in 2010 compared to 53.0 percent in 2009. In addition, a larger percentage of Hispanic students passed Reading in 2010 (76.2%) compared to 2009 (74.5%) (Figure 3). White students passed all three subject areas at a rate of 72.6 percent in 2010 compared to 70.4 percent in 2009. While the performance of both Hispanic and White students improved for each of the three subtest areas (i.e., math, reading, and writing), the performance of Black students improved quite substantially in the critical area of Reading (from 57.6% in 2009 to 59.4% in 2010). The proportion

of M-DCPS students passing all three subject areas in 2010 (51.5%) fell below that of all students tested statewide (62.3%).

The present compendium has been completed to assist M-DCPS high schools in preparation of students for college. These results can be used by high schools to determine the extent to which graduates are prepared for college-level courses.

A series of four graphs follow and have been provided in this year's report to further illustrate trends concerning the college readiness of M-DCPS graduates.

Please note that blank cells in the subsequent tables indicate either missing data from the state's CPT website or there were no students tested in certain ethnic/racial categories for the given year. For additional information, the interested reader is referred to the Florida Department of Education website at <http://www.fldoe.org/articulation/perfCPT/default.asp>.

All reports distributed by Research Services can be accessed at <http://drs.dadeschools.net>.

Figure 1

Trend of Students Prepared for College-Level Courses Based on CPT Scores Indicative of College Readiness in All Three Academic Areas

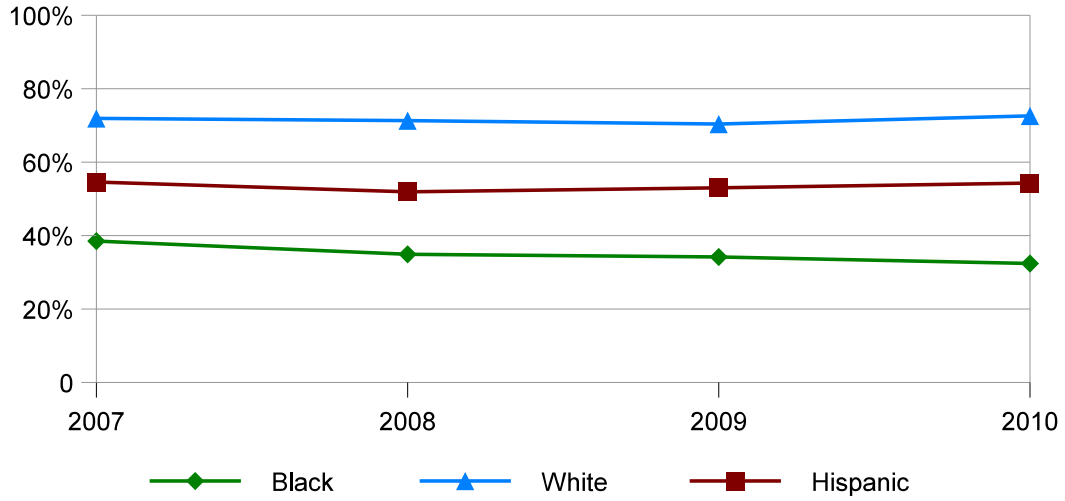


Figure 2

Trend of Students Prepared for College-Level Courses Based on CPT Math Scores

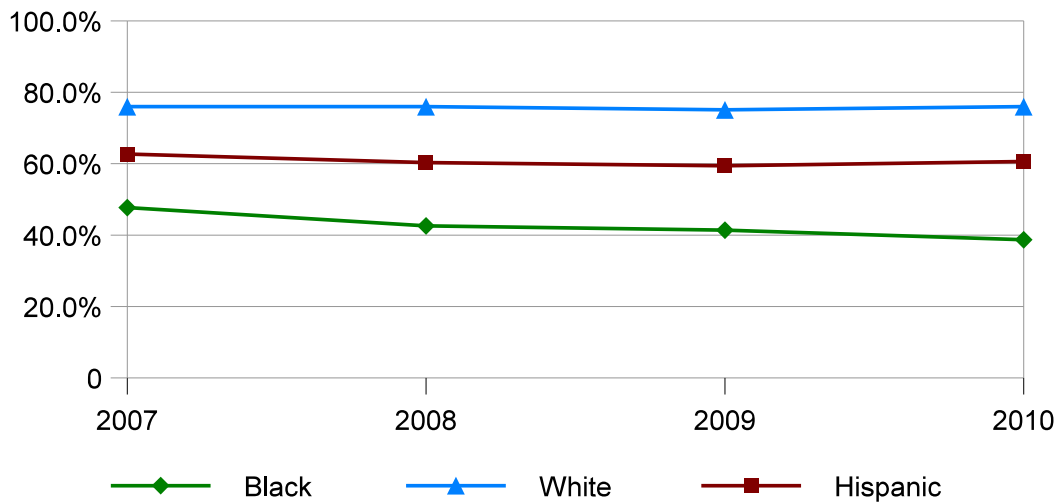


Figure 3

**Trend of Students Prepared for College-Level Courses
Based on CPT Reading Scores**

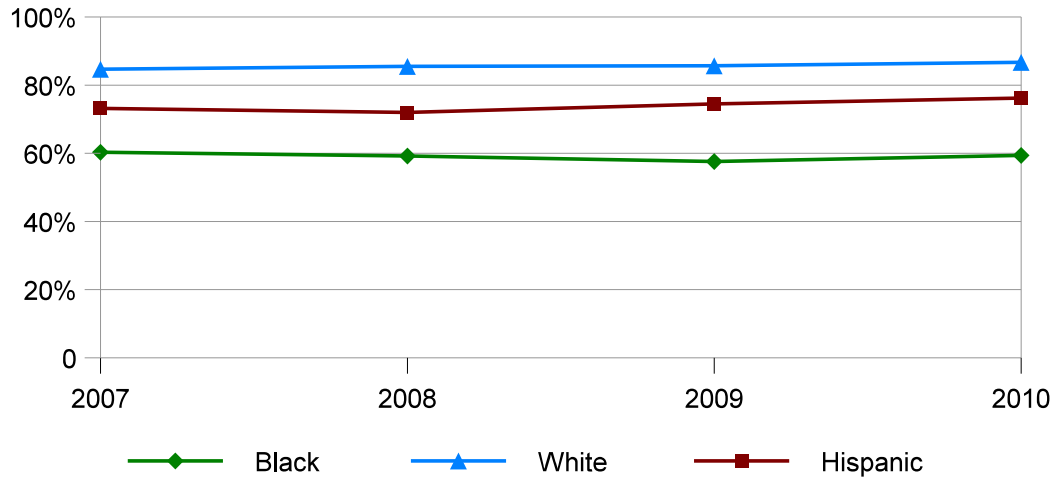
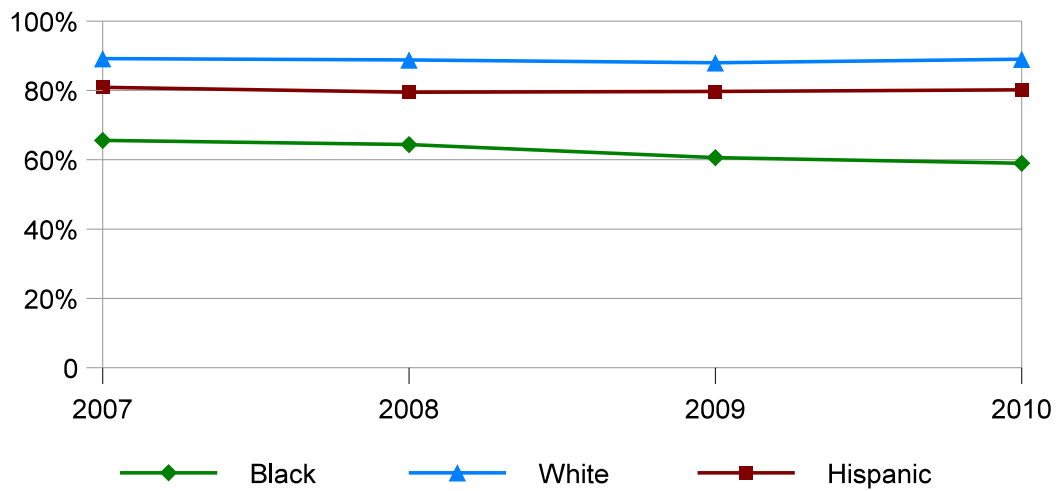


Figure 4

**Trend of Students Prepared for College-Level Courses
Based on CPT Writing Scores**

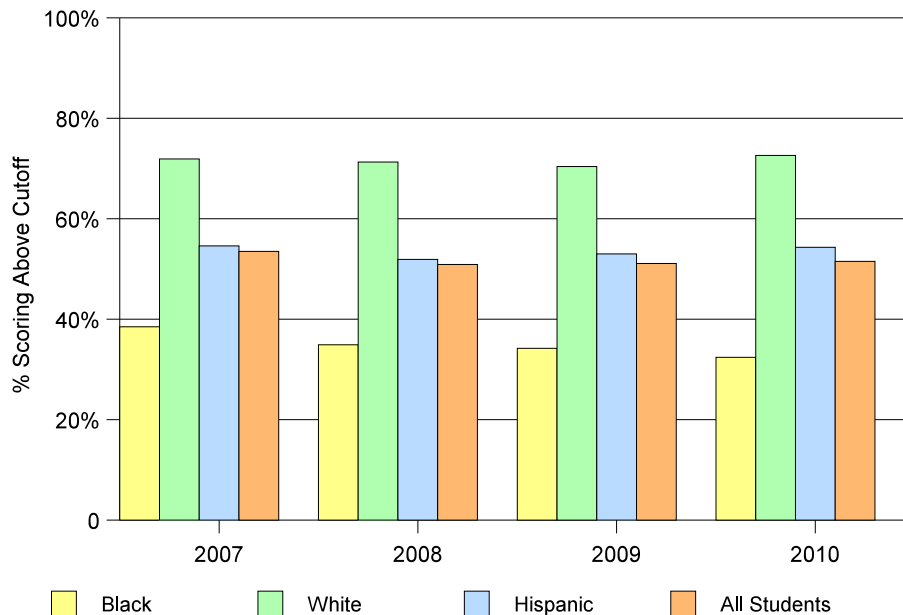


**Readiness for College
Results from the Florida College Placement Test
2007 - 2010**

Blank cells indicate missing data

		Math		Reading		Writing		All 3 Subjects	
		# Tested	% scoring above cutoff	# Tested	% scoring above cutoff	# Tested	% scoring above cutoff	# Tested	% scoring above cutoff
Miami-Dade County									
2010	Black	2,501	38.7%	2,498	59.4%	2,494	59.0%	2,484	32.4%
	White	834	76.0%	830	86.7%	827	89.0%	825	72.6%
	Hispanic	8,402	60.6%	8,359	76.2%	8,332	80.2%	8,298	54.3%
	All Students	12,031	57.7%	11,980	73.6%	11,944	76.5%	11,898	51.5%
2009	Black	2,287	41.4%	2,293	57.6%	2,291	60.6%	2,282	34.2%
	White	864	75.1%	865	85.7%	865	88.0%	864	70.4%
	Hispanic	7,974	59.4%	7,982	74.5%	7,961	79.7%	7,946	53.0%
	All Students	11,427	57.5%	11,442	72.1%	11,419	76.6%	11,394	51.1%
2008	Black	2,092	42.6%	2,089	59.2%	2,087	64.4%	2,087	34.9%
	White	1,011	76.0%	1,010	85.5%	1,010	88.8%	1,009	71.3%
	Hispanic	7,681	60.3%	7,685	72.0%	7,675	79.5%	7,664	51.9%
	All Students	11,218	58.8%	11,218	71.1%	11,205	77.7%	11,192	50.9%
2007	Black	2,088	47.7%	2,091	60.3%	2,091	65.6%	2,087	38.5%
	White	1,076	76.0%	1,077	84.7%	1,077	89.2%	1,076	71.9%
	Hispanic	7,261	62.7%	7,264	73.2%	7,264	80.9%	7,256	54.6%
	All Students	10,879	61.4%	10,886	72.0%	10,886	78.8%	10,873	53.5%

**Florida College Entry-Level Placement Test Results
Passed All Three Tests: 2007-2010**

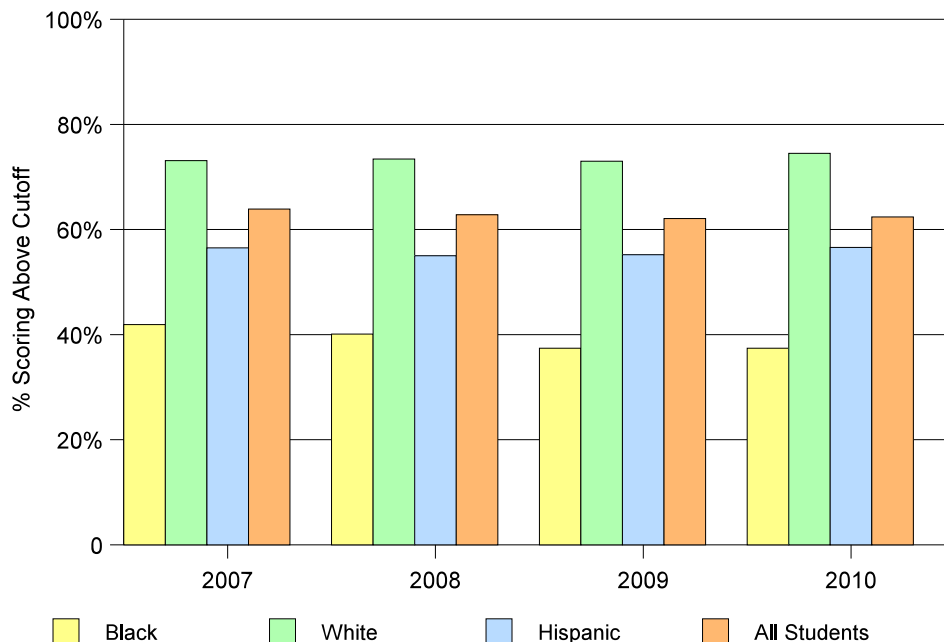


Readiness for College Results from the Florida College Placement Test 2007 - 2010

Blank cells indicate missing data

		Math		Reading		Writing		All 3 Subjects	
		# Tested	% scoring above cutoff	# Tested	% scoring above cutoff	# Tested	% scoring above cutoff	# Tested	% scoring above cutoff
State of Florida									
2010	Black	16,631	46.3%	16,784	60.8%	16,678	60.7%	16,433	37.4%
	White	40,202	79.2%	40,538	88.2%	40,121	88.3%	39,669	74.5%
	Hispanic	21,818	63.8%	21,866	76.1%	21,764	78.7%	21,574	56.6%
	All Students	83,811	68.8%	84,365	79.3%	83,717	80.1%	82,790	62.4%
2009	Black	15,946	46.2%	16,132	58.8%	16,035	61.4%	15,803	37.4%
	White	42,051	78.3%	42,458	87.4%	42,037	88.2%	41,523	73.0%
	Hispanic	20,340	62.4%	20,495	74.3%	20,412	78.1%	20,215	55.2%
	All Students	82,756	68.4%	83,527	78.5%	82,902	80.4%	81,932	62.1%
2008	Black	13,849	49.2%	13,927	61.6%	13,901	65.4%	13,768	40.1%
	White	41,740	78.5%	41,948	86.7%	41,820	88.4%	41,507	73.4%
	Hispanic	18,583	63.1%	18,640	73.1%	18,599	78.5%	18,494	55.0%
	All Students	79,534	69.7%	79,878	78.6%	79,675	81.6%	79,102	62.8%
2007	Black	12,703	51.8%	12,818	62.1%	12,818	66.7%	12,695	41.9%
	White	41,931	78.1%	42,655	85.8%	42,355	88.0%	41,885	73.1%
	Hispanic	17,076	65.2%	17,158	73.3%	17,158	79.2%	17,047	56.5%
	All Students	77,529	70.8%	78,197	78.7%	78,197	82.2%	77,446	63.9%

Florida College Entry-Level Placement Test Results
Passed All Three Tests: 2007-2010



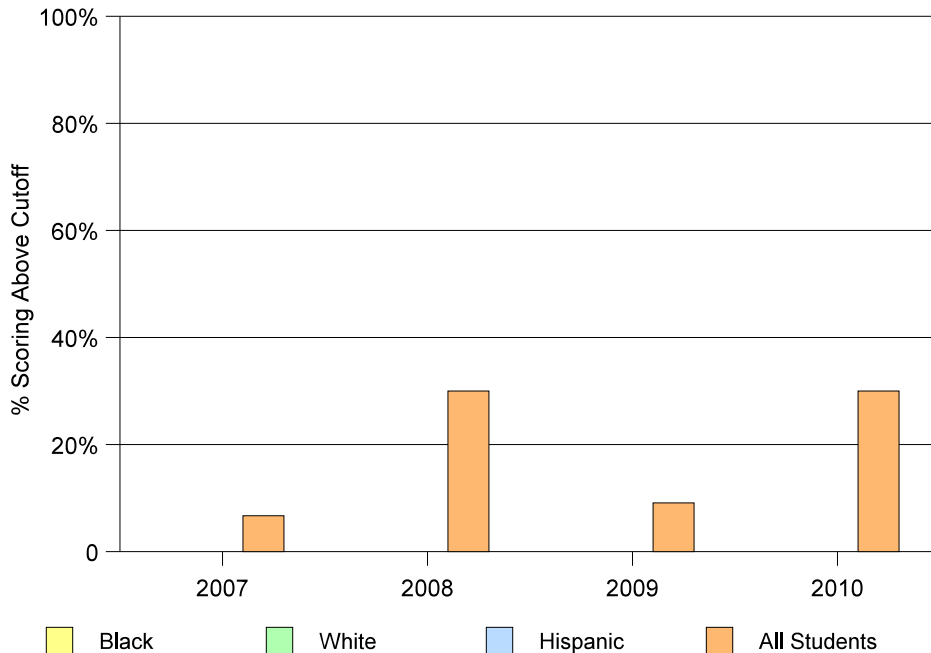
Readiness for College
Results from the Florida College Placement Test
2007 - 2010
Individual School Results

Readiness for College
Results from the Florida College Placement Test
2007 - 2010

Blank cells indicate missing data

		Math		Reading		Writing		All 3 Subjects	
		# Tested	% scoring above cutoff	# Tested	% scoring above cutoff	# Tested	% scoring above cutoff	# Tested	% scoring above cutoff
Academy for Community Education									
2010	Black								
	White								
	Hispanic								
	All Students	10	40.0%	10	60.0%	10	30.0%	10	30.0%
2009	Black								
	White								
	Hispanic								
	All Students	11	27.3%	11	54.5%	11	63.6%	11	9.1%
2008	Black								
	White								
	Hispanic								
	All Students	10	30.0%	10	40.0%	10	50.0%	10	30.0%
2007	Black								
	White								
	Hispanic								
	All Students	15	26.7%	15	33.3%	15	53.3%	15	6.7%

Florida College Entry-Level Placement Test Results
Passed All Three Tests: 2007-2010

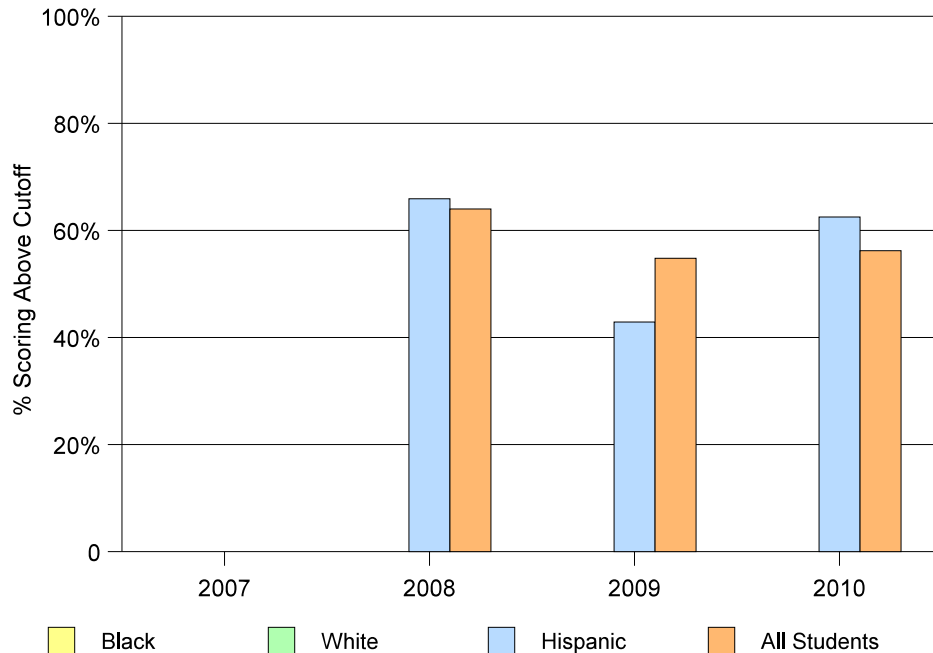


Readiness for College
Results from the Florida College Placement Test
2007 - 2010

Blank cells indicate missing data

		Math		Reading		Writing		All 3 Subjects	
		# Tested	% scoring above cutoff	# Tested	% scoring above cutoff	# Tested	% scoring above cutoff	# Tested	% scoring above cutoff
Academy of Arts and Minds									
2010	Black								
	White								
	Hispanic	16	68.8%	16	93.8%	16	100.0%	16	62.5%
	All Students	32	59.4%	32	90.6%	32	100.0%	32	56.2%
2009	Black								
	White								
	Hispanic	21	42.9%	21	90.5%	21	90.5%	21	42.9%
	All Students	42	57.1%	42	85.7%	42	90.5%	42	54.8%
2008	Black								
	White								
	Hispanic	41	75.6%	41	85.4%	41	95.1%	41	65.9%
	All Students	50	72.0%	50	84.0%	50	94.0%	50	64.0%
2007	Black								
	White								
	Hispanic								
	All Students								

Florida College Entry-Level Placement Test Results
Passed All Three Tests: 2007-2010

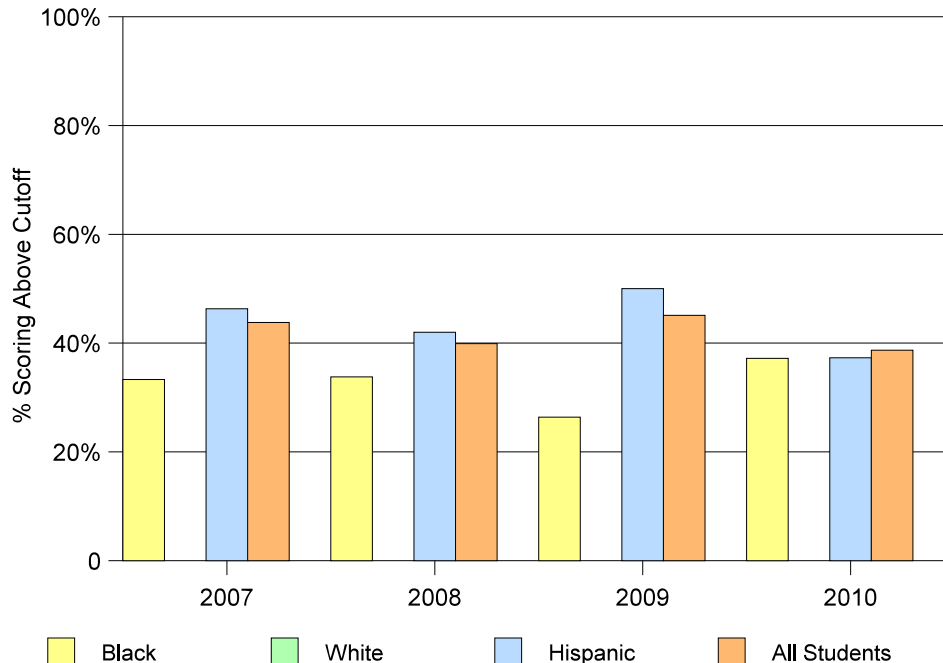


**Readiness for College
Results from the Florida College Placement Test
2007 - 2010**

Blank cells indicate missing data

		Math		Reading		Writing		All 3 Subjects	
		# Tested	% scoring above cutoff	# Tested	% scoring above cutoff	# Tested	% scoring above cutoff	# Tested	% scoring above cutoff
American									
2010	Black	51	43.1%	51	58.8%	51	54.9%	51	37.2%
	White								
	Hispanic	160	45.0%	159	66.0%	160	76.2%	158	37.3%
	All Students	227	45.8%	226	64.6%	227	71.4%	225	38.7%
2009	Black	53	32.1%	53	32.1%	53	34.0%	53	26.4%
	White								
	Hispanic	166	53.6%	166	68.1%	166	71.7%	166	50.0%
	All Students	233	49.4%	233	64.8%	233	68.2%	233	45.1%
2008	Black	65	40.0%	65	50.8%	65	56.9%	65	33.8%
	White								
	Hispanic	181	48.1%	181	66.9%	181	68.5%	181	42.0%
	All Students	263	46.4%	263	63.9%	263	65.0%	263	39.9%
2007	Black	63	41.3%	64	54.7%	64	64.1%	63	33.3%
	White								
	Hispanic	175	53.7%	175	68.0%	175	73.1%	175	46.3%
	All Students	251	51.8%	252	64.7%	252	71.8%	251	43.8%

**Florida College Entry-Level Placement Test Results
Passed All Three Tests: 2007 - 2010**

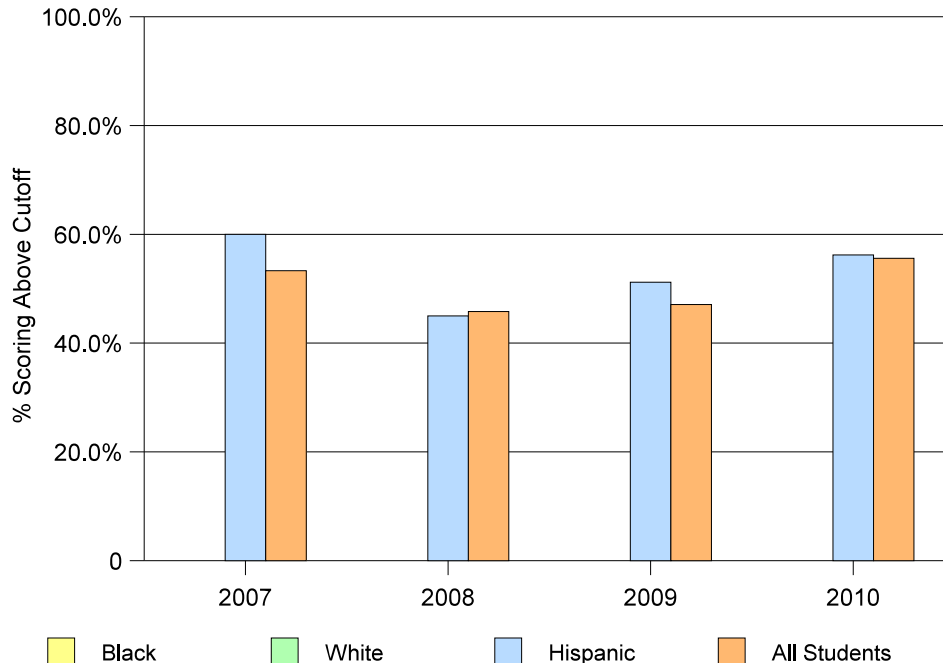


Readiness for College
Results from the Florida College Placement Test
2007 - 2010

Blank cells indicate missing data

		Math		Reading		Writing		All 3 Subjects	
		# Tested	% scoring above cutoff	# Tested	% scoring above cutoff	# Tested	% scoring above cutoff	# Tested	% scoring above cutoff
George T. Baker Aviation									
2010	Black								
	White								
	Hispanic	16	68.8%	16	75.0%	16	87.5%	16	56.2%
	All Students	27	66.7%	27	74.1%	27	88.9%	27	55.6%
2009	Black								
	White								
	Hispanic	12	58.3%	12	75.0%	12	83.3%	12	50.0%
	All Students	17	52.9%	17	70.6%	17	88.2%	17	47.1%
2008	Black								
	White								
	Hispanic	20	65.0%	20	65.0%	20	75.0%	20	45.0%
	All Students	24	62.5%	54	70.8%	24	79.2%	24	45.8%
2007	Black								
	White								
	Hispanic	11	63.6%	10	80.0%	10	80.0%	10	60.0%
	All Students	16	62.5%	15	66.7%	15	86.7%	15	53.3%

Florida College Entry-Level Placement Test Results
Passed All Three Tests: 2007- 2010

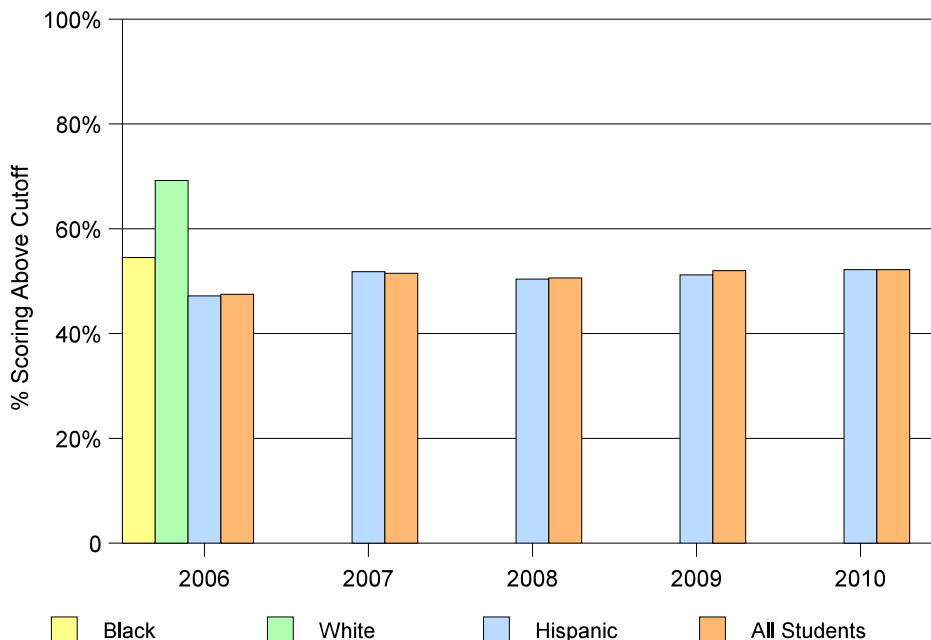


Readiness for College
Results from the Florida College Placement Test
2007 - 2010

Blank cells indicate missing data

		Math		Reading		Writing		All 3 Subjects	
		# Tested	% scoring above cutoff	# Tested	% scoring above cutoff	# Tested	% scoring above cutoff	# Tested	% scoring above cutoff
G. Holmes Braddock									
2010	Black								
	White								
	Hispanic	449	58.8%	445	76.8%	443	81.5%	439	52.2%
	All Students	462	59.1%	458	76.6%	456	81.1%	452	52.2%
2009	Black								
	White								
	Hispanic	463	57.7%	462	74.7%	461	78.7%	460	51.2%
	All Students	482	58.1%	481	74.4%	480	78.8%	479	52.0%
2008	Black								
	White								
	Hispanic	490	62.0%	493	68.6%	492	80.1%	490	50.4%
	All Students	520	62.7%	523	68.6%	522	79.5%	520	50.6%
2007	Black								
	White								
	Hispanic	539	62.7%	539	70.3%	539	79.4%	539	51.8%
	All Students	571	62.5%	571	70.2%	571	79.7%	571	51.5%

Florida College Entry-Level Placement Test Results
Passed All Three Tests: 2007-2010



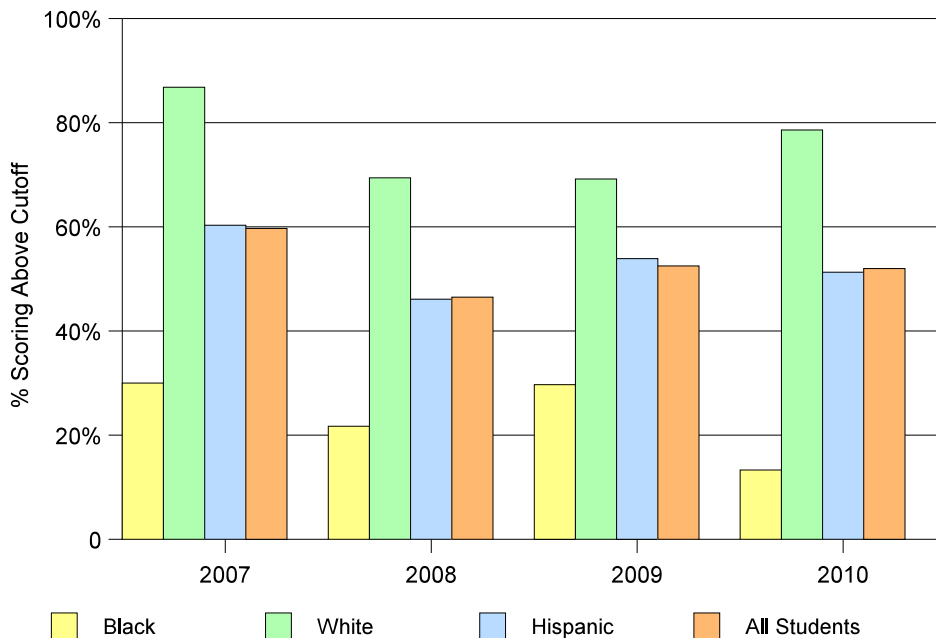
**Readiness for College
Results from the Florida College Placement Test
2007 - 2010**

Blank cells indicate missing data

		Math		Reading		Writing		All 3 Subjects	
		# Tested	% scoring above cutoff	# Tested	% scoring above cutoff	# Tested	% scoring above cutoff	# Tested	% scoring above cutoff
Coral Gables									
2010	Black	15	13.3%	15	33.3%	15	33.3%	15	13.3%
	White	28	78.6%	28	85.7%	28	89.3%	28	78.6%
	Hispanic	377	57.3%	377	72.4%	375	80.8%	370	51.3%
	All Students	438	57.5%	438	71.7%	436	79.1%	431	52.0%
2009	Black	37	32.4%	37	54.1%	37	56.8%	37	29.7%
	White	13	69.2%	13	92.3%	13	76.9%	13	69.2%
	Hispanic	390	59.7%	392	73.0%	389	79.2%	388	53.9%
	All Students	450	58.2%	452	72.1%	449	77.3%	448	52.5%
2008	Black	23	26.1%	23	39.1%	23	39.1%	23	21.7%
	White	36	75.0%	36	77.8%	36	88.9%	36	69.4%
	Hispanic	337	55.5%	336	69.0%	335	77.9%	334	46.1%
	All Students	418	55.0%	417	67.1%	416	75.5%	415	46.5%
2007	Black	10	30.0%	10	60.0%	10	50.0%	10	30.0%
	White	38	92.1%	38	86.8%	38	89.5%	38	86.8%
	Hispanic	356	69.9%	356	73.9%	356	81.7%	355	60.3%
	All Students	433	68.6%	433	73.7%	433	79.9%	432	59.7%

Florida College Entry-Level Placement Test Results

Passed All Three Tests: 2007-2010

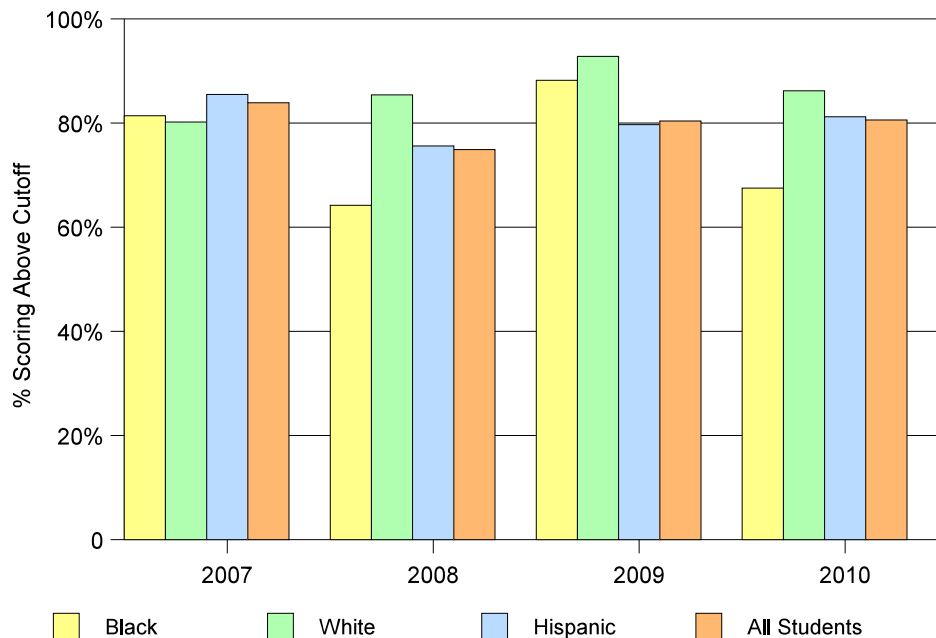


**Readiness for College
Results from the Florida College Placement Test
2007 - 2010**

Blank cells indicate missing data

		Math		Reading		Writing		All 3 Subjects	
		# Tested	% scoring above cutoff	# Tested	% scoring above cutoff	# Tested	% scoring above cutoff	# Tested	% scoring above cutoff
Coral Reef									
2010	Black	77	77.8%	77	88.3%	77	89.6%	77	67.5%
	White	81	90.1%	81	93.8%	80	95.0%	80	86.2%
	Hispanic	310	85.5%	309	90.0%	308	94.5%	308	81.2%
	All Students	497	84.9%	496	90.7%	494	94.1%	494	80.6%
2009	Black	96	76.0%	96	80.2%	96	85.4%	96	69.8%
	White	83	95.2%	83	98.8%	83	96.4%	83	92.8%
	Hispanic	307	82.7%	307	93.2%	306	95.8%	306	79.7%
	All Students	515	84.1%	515	91.8%	514	93.6%	514	80.4%
2008	Black	109	69.7%	109	85.3%	109	88.1%	109	64.2%
	White	82	91.5%	82	92.7%	82	97.6%	82	85.4%
	Hispanic	242	80.6%	242	89.3%	242	93.8%	242	75.6%
	All Students	463	80.3%	463	88.8%	463	93.1%	463	74.9%
2007	Black	102	85.3%	102	91.2%	102	91.2%	102	81.4%
	White	101	84.2%	101	92.1%	101	98.0%	101	80.2%
	Hispanic	248	88.3%	248	95.6%	248	97.2%	248	85.5%
	All Students	483	87.6%	483	93.8%	483	96.1%	483	83.9%

**Florida College Entry-Level Placement Test Results
Passed All Three Tests: 2007-2010**

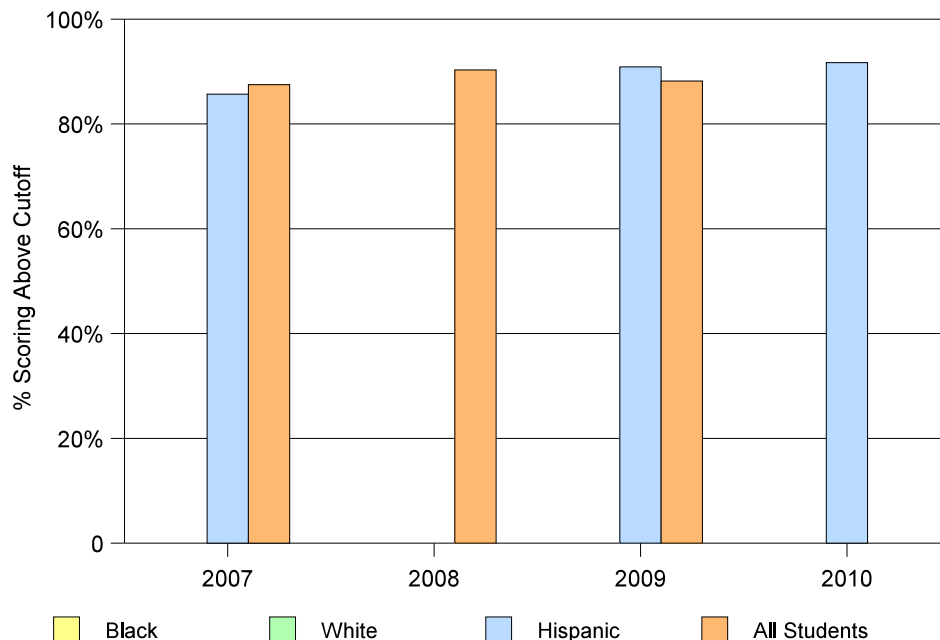


Readiness for College
Results from the Florida College Placement Test
2007 - 2010

Blank cells indicate missing data

		Math		Reading		Writing		All 3 Subjects	
		# Tested	% scoring above cutoff	# Tested	% scoring above cutoff	# Tested	% scoring above cutoff	# Tested	% scoring above cutoff
Design & Architecture									
2010	Black								
	White								
	Hispanic								
	All Students	24	91.7%	24	100.0%	24	95.8%	24	91.7%
2009	Black								
	White								
	Hispanic	11	90.9%	11	90.9%	11	100.0%	11	90.9%
	All Students	34	88.2%	34	91.2%	34	94.1%	34	88.2%
2008	Black								
	White								
	Hispanic								
	All Students	31	93.5%	31	96.8%	31	96.8%	31	90.3%
2007	Black								
	White								
	Hispanic	14	85.7%	14	100.0%	14	100.0%	14	85.7%
	All Students	40	90.0%	40	97.5%	40	100.0%	40	87.5%

Florida College Entry-Level Placement Test Results
Passed All Three Tests: 2007-2010

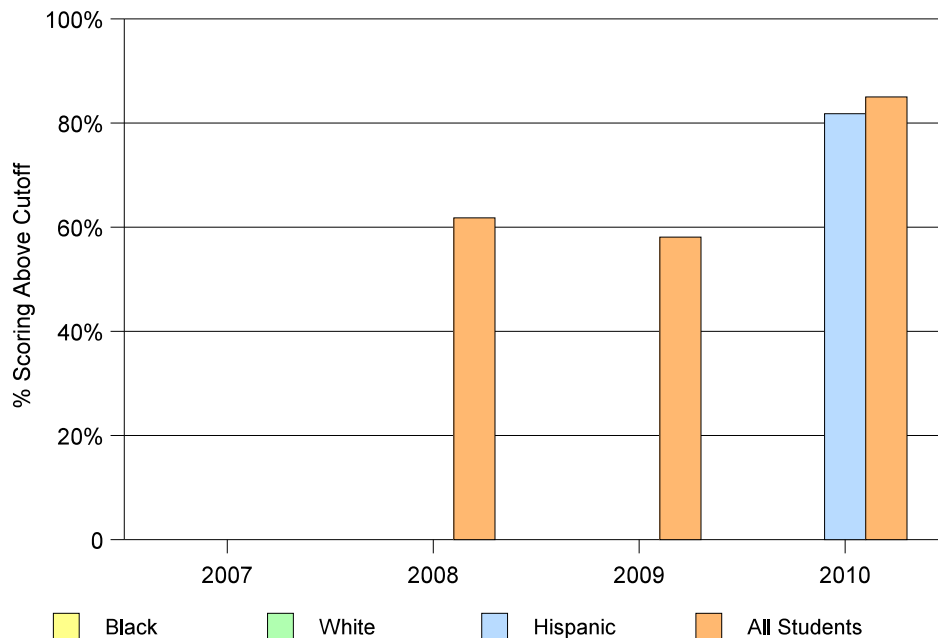


Readiness for College
Results from the Florida College Placement Test
2007 - 2010

Blank cells indicate missing data

		Math		Reading		Writing		All 3 Subjects	
		# Tested	% scoring above cutoff	# Tested	% scoring above cutoff	# Tested	% scoring above cutoff	# Tested	% scoring above cutoff
Doctor's Charter of Miami Shores									
2010	Black								
	White								
	Hispanic	11	90.9%	11	81.8%	11	90.9%	11	81.8%
	All Students	40	95.0%	40	92.5%	40	90.0%	40	85.0%
2009	Black								
	White								
	Hispanic								
	All Students	31	71.0%	31	83.9%	31	93.5%	31	58.1%
2008	Black								
	White								
	Hispanic								
	All Students	34	64.7%	34	82.4%	34	85.3%	34	61.8%
2007	Black								
	White								
	Hispanic								
	All Students								

Florida College Entry-Level Placement Test Results
Passed All Three Tests: 2007-2010

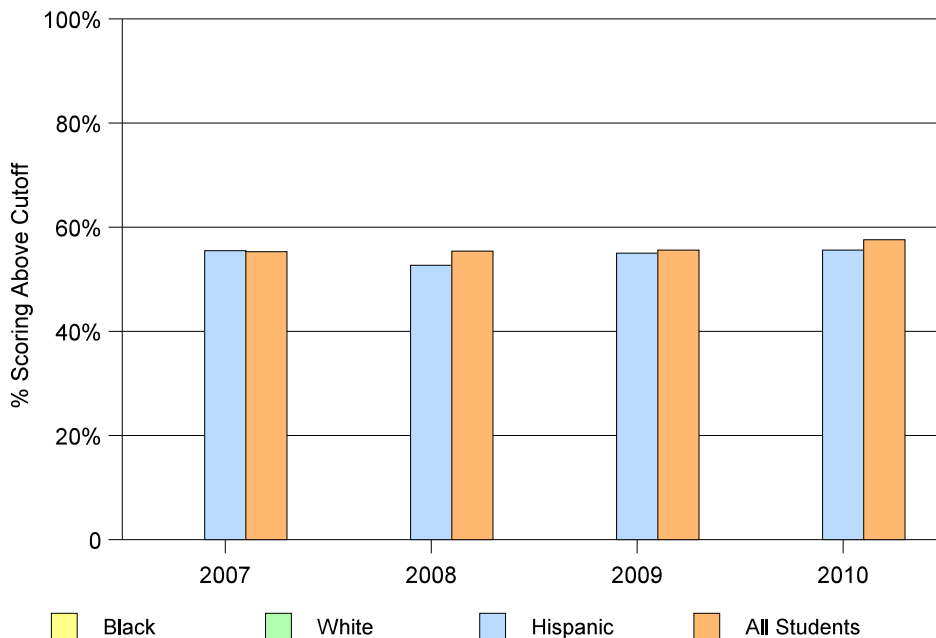


**Readiness for College
Results from the Florida College Placement Test
2007 - 2010**

Blank cells indicate missing data

		Math		Reading		Writing		All 3 Subjects	
		# Tested	% scoring above cutoff	# Tested	% scoring above cutoff	# Tested	% scoring above cutoff	# Tested	% scoring above cutoff
Doral Academy Charter									
2010	Black								
	White								
	Hispanic	152	60.5%	151	84.8%	152	87.5%	151	55.6%
	All Students	167	61.7%	166	86.1%	166	88.6%	165	57.6%
2009	Black								
	White								
	Hispanic	120	64.2%	120	79.2%	120	84.2%	120	55.0%
	All Students	133	63.9%	133	78.9%	133	83.5%	133	55.6%
2008	Black								
	White								
	Hispanic	167	62.3%	167	71.3%	167	81.4%	167	52.7%
	All Students	184	64.1%	184	73.4%	184	83.2%	184	55.4%
2007	Black								
	White								
	Hispanic	182	66.5%	182	81.3%	182	87.4%	182	55.5%
	All Students	197	66.5%	197	82.2%	197	87.3%	197	55.3%

**Florida College Entry-Level Placement Test Results
Passed All Three Tests: 2007-2010**

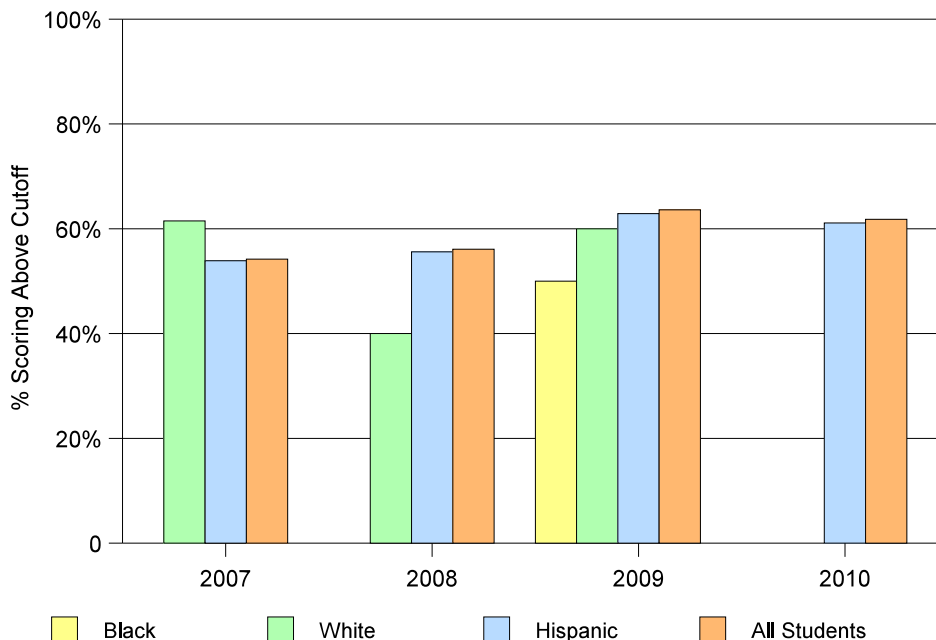


**Readiness for College
Results from the Florida College Placement Test
2007 - 2010**

Blank cells indicate missing data

		Math		Reading		Writing		All 3 Subjects	
		# Tested	% scoring above cutoff	# Tested	% scoring above cutoff	# Tested	% scoring above cutoff	# Tested	% scoring above cutoff
John A. Ferguson									
2010	Black								
	White								
	Hispanic	617	67.6%	615	80.2%	614	83.4%	614	61.1%
	All Students	666	68.5%	664	80.3%	663	84.2%	663	61.8%
2009	Black	10	80.0%	10	70.0%	10	100.0%	10	50.0%
	White	10	60.0%	10	90.0%	10	90.0%	10	60.0%
	Hispanic	534	68.2%	534	79.8%	534	86.0%	534	62.9%
	All Students	579	69.1%	579	80.3%	579	86.7%	579	63.6%
2008	Black								
	White	10	60.0%	10	60.0%	10	100.0%	10	40.0%
	Hispanic	476	63.0%	476	77.5%	476	81.5%	475	55.6%
	All Students	527	63.2%	527	77.8%	527	82.0%	526	56.1%
2007	Black								
	White	13	69.2%	13	84.6%	13	92.3%	13	61.5%
	Hispanic	332	62.7%	334	71.9%	334	80.5%	332	53.9%
	All Students	371	63.6%	373	71.6%	373	81.2%	371	54.2%

**Florida College Entry-Level Placement Test Results
Passed All Three Tests: 2007-2010**

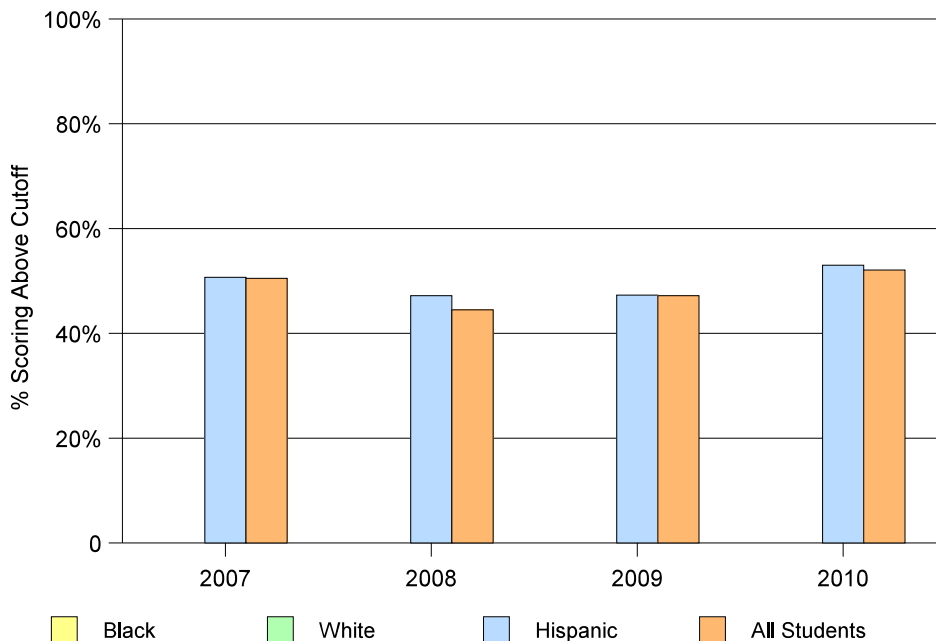


Readiness for College
Results from the Florida College Placement Test
2007 - 2010

Blank cells indicate missing data

		Math		Reading		Writing		All 3 Subjects	
		# Tested	% scoring above cutoff	# Tested	% scoring above cutoff	# Tested	% scoring above cutoff	# Tested	% scoring above cutoff
Barbara Goleman									
2010	Black								
	White								
	Hispanic	408	58.6%	407	72.5%	402	81.3%	402	53.0%
	All Students	434	58.3%	431	71.9%	428	79.9%	428	52.1%
2009	Black								
	White								
	Hispanic	414	53.6%	414	70.3%	414	77.5%	414	47.3%
	All Students	447	53.0%	447	70.5%	447	77.9%	447	47.2%
2008	Black								
	White								
	Hispanic	417	54.4%	418	67.2%	418	75.1%	417	47.2%
	All Students	456	54.2%	457	66.1%	457	74.2%	456	44.5%
2007	Black								
	White								
	Hispanic	403	58.8%	403	67.2%	403	77.2%	402	50.7%
	All Students	441	59.2%	441	67.1%	441	76.2%	440	50.5%

Florida College Entry-Level Placement Test Results
Passed All Three Tests: 2007-2019

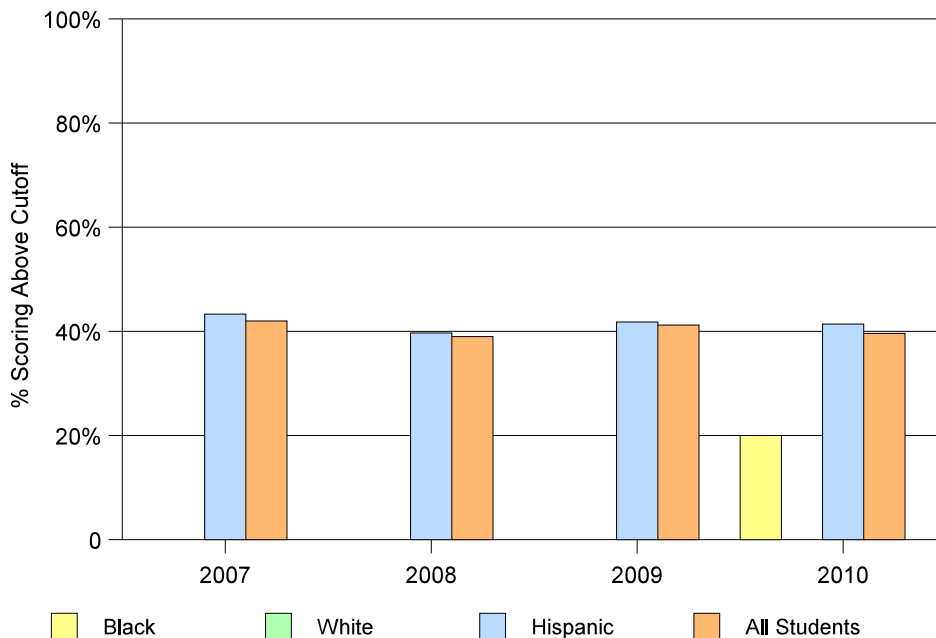


**Readiness for College
Results from the Florida College Placement Test
2007 - 2010**

Blank cells indicate missing data

		Math		Reading		Writing		All 3 Subjects	
		# Tested	% scoring above cutoff	# Tested	% scoring above cutoff	# Tested	% scoring above cutoff	# Tested	% scoring above cutoff
Hialeah									
2010	Black	36	33.3%	35	51.4%	35	51.4%	35	20.0%
	White								
	Hispanic	403	44.7%	403	72.2%	402	77.4%	401	41.4%
	All Students	449	43.9%	447	70.2%	446	75.1%	445	39.6%
2009	Black								
	White								
	Hispanic	354	46.6%	355	72.4%	348	75.9%	347	41.8%
	All Students	378	46.3%	379	71.8%	372	75.8%	371	41.2%
2008	Black								
	White								
	Hispanic	383	44.9%	384	64.8%	380	76.8%	380	39.7%
	All Students	418	44.5%	419	64.9%	415	75.7%	415	39.0%
2007	Black								
	White								
	Hispanic	357	48.5%	356	67.7%	356	74.2%	356	43.3%
	All Students	389	47.3%	388	66.0%	388	73.2%	388	42.0%

**Florida College Entry-Level Placement Test Results
Passed All Three Tests: 2007-2010**

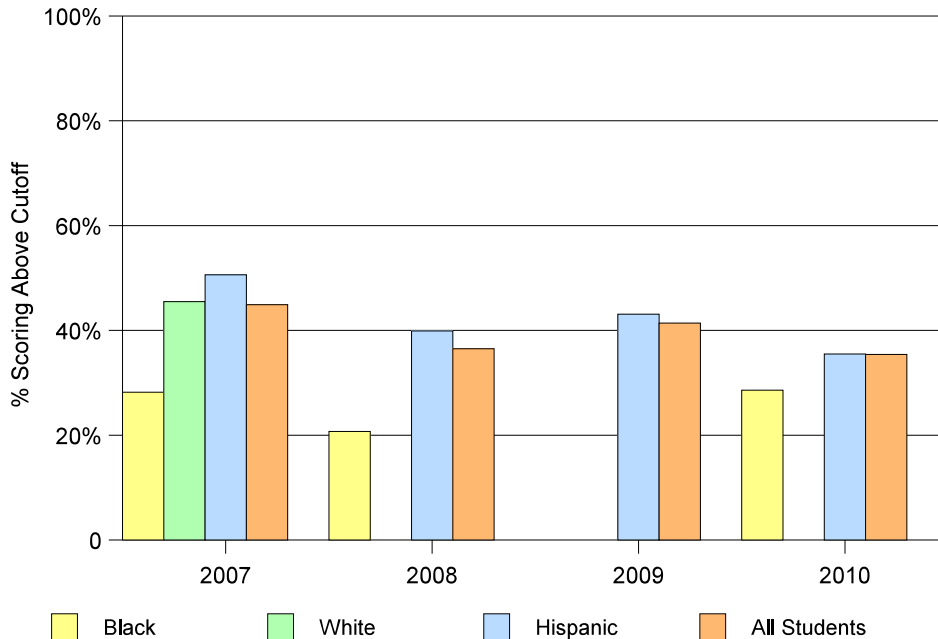


**Readiness for College
Results from the Florida College Placement Test
2007 - 2010**

Blank cells indicate missing data

		Math		Reading		Writing		All 3 Subjects	
		# Tested	% scoring above cutoff	# Tested	% scoring above cutoff	# Tested	% scoring above cutoff	# Tested	% scoring above cutoff
Hialeah-Miami Lakes									
2010	Black	42	28.6%	42	52.4%	42	59.5%	42	28.6%
	White								
	Hispanic	156	38.5%	154	64.3%	153	62.7%	152	35.5%
	All Students	210	37.6%	208	63.9%	207	63.8%	206	35.4%
2009	Black								
	White								
	Hispanic	167	46.7%	168	72.6%	168	73.8%	167	43.1%
	All Students	191	45.5%	192	70.8%	192	71.4%	191	41.4%
2008	Black	29	24.1%	29	44.8%	29	58.6%	29	20.7%
	White								
	Hispanic	164	48.8%	164	65.9%	163	73.6%	163	39.9%
	All Students	209	45.5%	209	62.2%	208	70.7%	208	36.5%
2007	Black	39	35.9%	39	51.3%	39	66.7%	39	28.2%
	White	11	54.5%	11	63.6%	11	63.6%	11	45.5%
	Hispanic	176	55.1%	176	68.8%	176	75.6%	176	50.6%
	All Students	236	50.8%	236	64.8%	236	72.5%	236	44.9%

**Florida College Entry-Level Placement Test Results
Passed All Three Tests: 2007-2010**

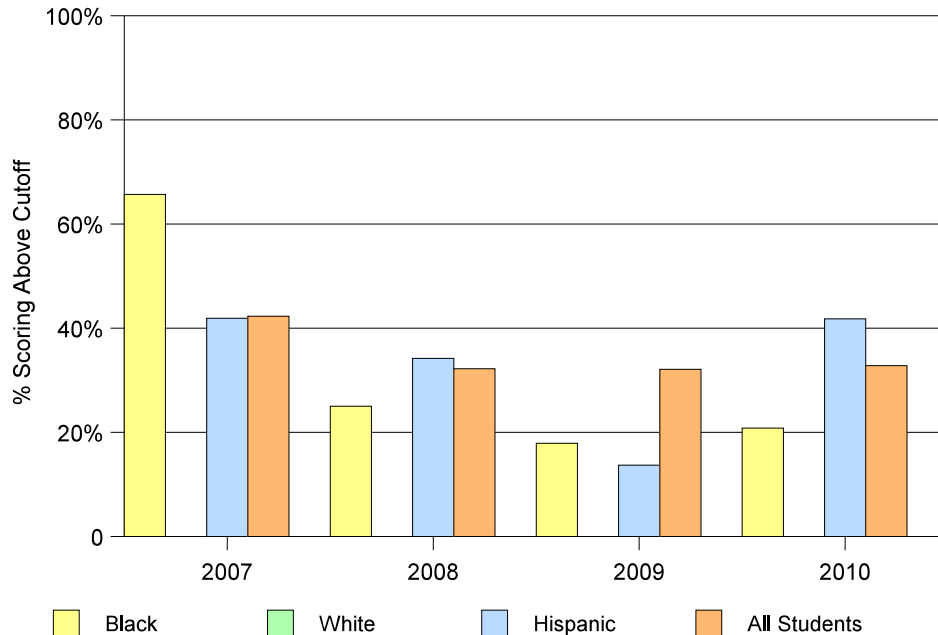


**Readiness for College
Results from the Florida College Placement Test
2007 - 2010**

Blank cells indicate missing data

		Math		Reading		Writing		All 3 Subjects	
		# Tested	% scoring above cutoff	# Tested	% scoring above cutoff	# Tested	% scoring above cutoff	# Tested	% scoring above cutoff
Homestead									
2010	Black	48	29.2%	48	64.6%	48	50.0%	48	20.8%
	White								
	Hispanic	68	47.1%	67	65.7%	67	62.7%	67	41.8%
	All Students	123	39.8%	122	64.8%	122	56.6%	122	32.8%
2009	Black	56	21.4%	56	50.0%	56	55.4%	56	17.9%
	White								
	Hispanic	73	16.4%	73	38.4%	73	42.5%	73	13.7%
	All Students	134	38.1%	134	64.2%	134	63.4%	134	32.1%
2008	Black	40	35.0%	40	55.0%	40	57.5%	40	25.0%
	White								
	Hispanic	76	36.8%	76	57.9%	76	72.4%	76	34.2%
	All Students	121	37.2%	121	57.9%	121	67.8%	121	32.2%
2007	Black	42	45.2%	42	54.8%	42	69.0%	42	35.7%
	White								
	Hispanic	105	47.6%	105	63.8%	105	72.4%	105	41.9%
	All Students	156	49.4%	156	62.2%	156	72.4%	156	42.3%

**Florida College Entry-Level Placement Test Results
Passed All Three Tests: 2007-2010**

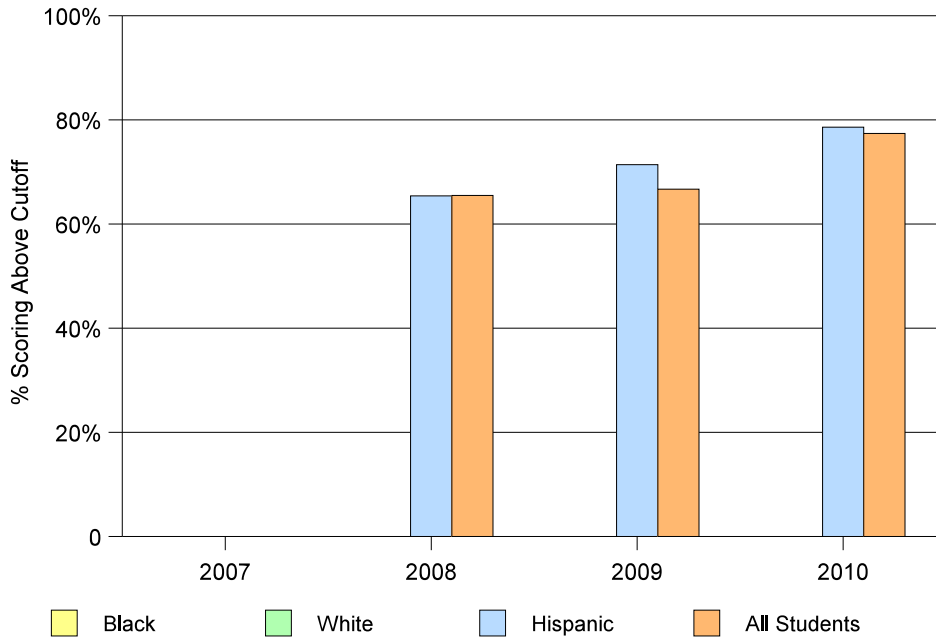


Readiness for College
Results from the Florida College Placement Test
2007 - 2010

Blank cells indicate missing data

		Math		Reading		Writing		All 3 Subjects	
		# Tested	% scoring above cutoff	# Tested	% scoring above cutoff	# Tested	% scoring above cutoff	# Tested	% scoring above cutoff
International Studies Charter									
2010	Black								
	White								
	Hispanic	28	82.1%	28	89.3%	28	100.0%	28	78.6%
	All Students	31	80.6%	31	90.3%	31	100.0%	31	77.4%
2009	Black								
	White								
	Hispanic	14	78.6%	14	78.6%	14	85.7%	14	71.4%
	All Students	21	76.2%	21	81.0%	21	85.7%	21	66.7%
2008	Black								
	White								
	Hispanic	26	73.1%	26	84.6%	26	92.3%	26	65.4%
	All Students	29	72.4%	29	86.2%	29	93.1%	29	65.4%
2007	Black								
	White								
	Hispanic								
	All Students								

Florida College Entry-Level Placement Test Results
Passed All Three Tests: 2007-2010

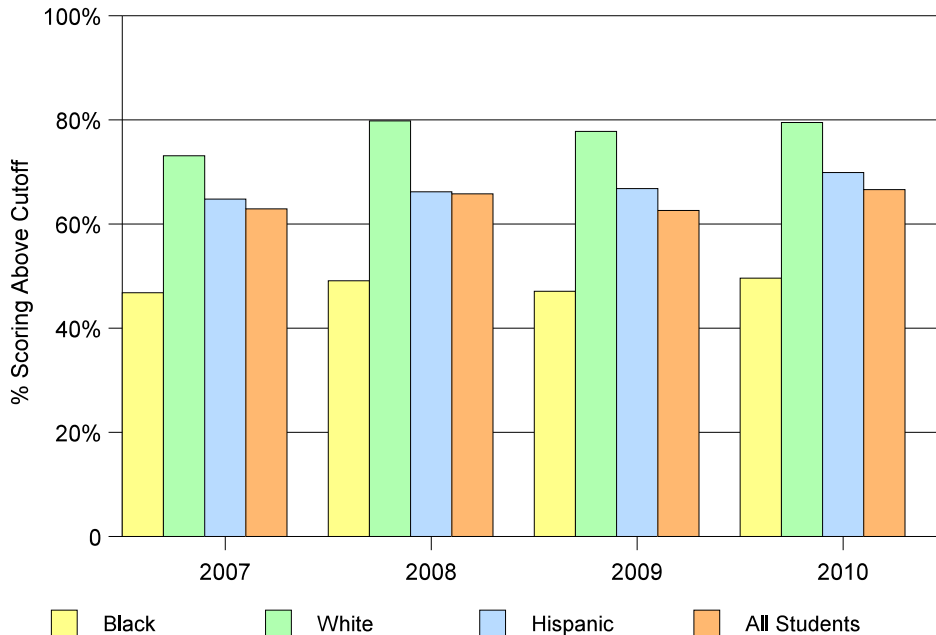


**Readiness for College
Results from the Florida College Placement Test
2007 - 2010**

Blank cells indicate missing data

		Math		Reading		Writing		All 3 Subjects	
		# Tested	% scoring above cutoff	# Tested	% scoring above cutoff	# Tested	% scoring above cutoff	# Tested	% scoring above cutoff
Dr. Michael M. Krop									
2010	Black	137	58.4%	137	70.8%	137	69.3%	137	49.6%
	White	117	88.9%	117	88.9%	117	88.9%	117	79.5%
	Hispanic	205	77.1%	203	82.7%	205	86.3%	203	69.9%
	All Students	469	74.6%	467	81.2%	469	82.3%	467	66.6%
2009	Black	156	57.1%	155	63.9%	156	68.6%	155	47.1%
	White	108	83.3%	109	82.6%	109	84.4%	108	77.8%
	Hispanic	199	76.9%	199	78.4%	199	82.9%	199	66.8%
	All Students	482	71.8%	482	74.3%	483	78.3%	481	62.6%
2008	Black	106	57.5%	106	70.8%	106	77.4%	106	49.1%
	White	114	84.2%	114	93.0%	114	93.9%	114	79.8%
	Hispanic	207	74.9%	207	76.8%	207	82.1%	207	66.2%
	All Students	447	73.6%	447	79.2%	447	83.9%	447	65.8%
2007	Black	124	56.6%	124	67.7%	124	66.9%	124	46.8%
	White	130	74.6%	130	84.6%	130	92.3%	130	73.1%
	Hispanic	176	71.0%	176	79.5%	176	85.2%	176	64.8%
	All Students	455	69.0%	455	78.0%	455	82.9%	455	62.9%

**Florida College Entry-Level Placement Test Results
Passed All Three Tests: 2007-2010**

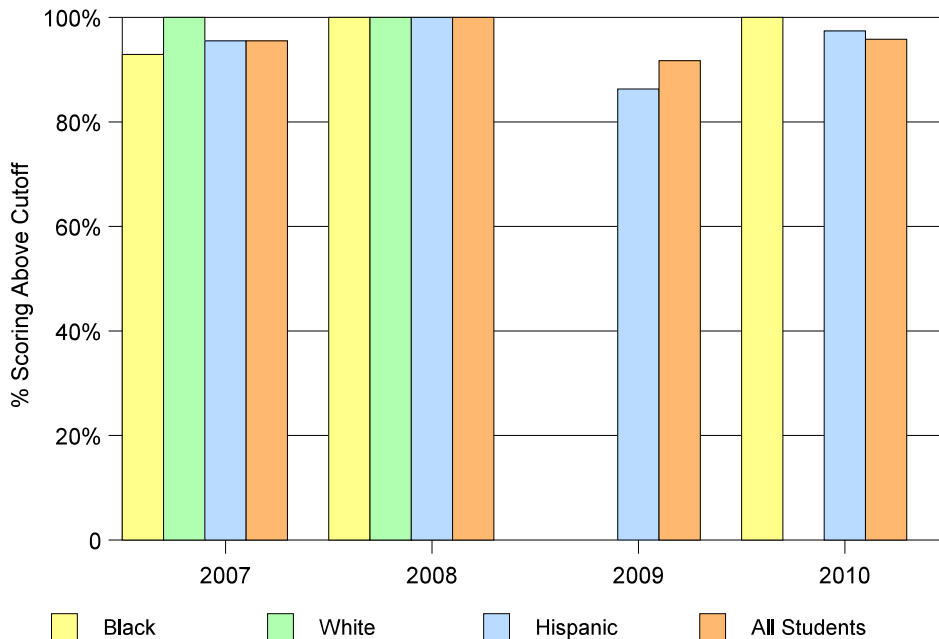


Readiness for College
Results from the Florida College Placement Test
2007 - 2010

Blank cells indicate missing data

		Math		Reading		Writing		All 3 Subjects	
		# Tested	% scoring above cutoff	# Tested	% scoring above cutoff	# Tested	% scoring above cutoff	# Tested	% scoring above cutoff
MAST Academy									
2010	Black	12	100.0%	12	100.0%	12	100.0%	12	100.0%
	White								
	Hispanic	39	100.0%	39	100.0%	39	97.4%	39	97.4%
	All Students	72	97.2%	72	98.6%	72	98.6%	72	95.8%
2009	Black								
	White								
	Hispanic	51	88.2%	51	94.1%	51	96.1%	51	86.3%
	All Students	84	92.9%	84	96.4%	84	97.6%	84	91.7%
2008	Black								
	White	11	100.0%	11	100.0%	11	100.0%	11	100.0%
	Hispanic	39	100.0%	39	100.0%	39	100.0%	39	100.0%
	All Students	72	98.6%	72	100.0%	72	100.0%	72	98.6%
2007	Black	14	92.9%	14	100.0%	14	100.0%	14	92.9%
	White	15	100.0%	15	100.0%	15	100.0%	15	100.0%
	Hispanic	44	97.7%	44	95.5%	44	97.7%	44	95.5%
	All Students	89	96.6%	89	97.8%	89	98.9%	89	95.5%

Florida College Entry-Level Placement Test Results
Passed All Three Tests: 2006-2009

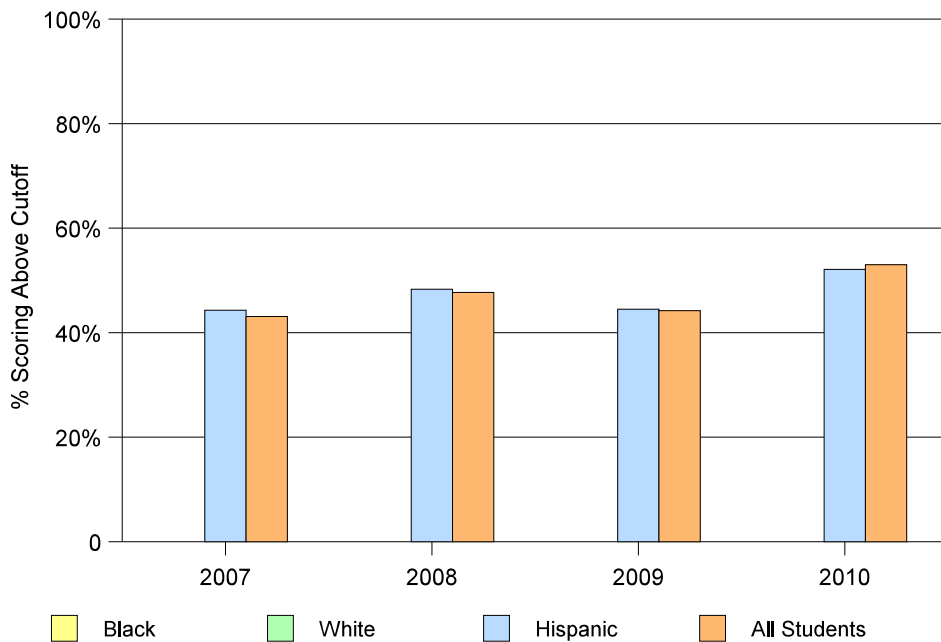


Readiness for College
Results from the Florida College Placement Test
2007 - 2010

Blank cells indicate missing data

		Math		Reading		Writing		All 3 Subjects	
		# Tested	% scoring above cutoff	# Tested	% scoring above cutoff	# Tested	% scoring above cutoff	# Tested	% scoring above cutoff
Mater Academy									
2010	Black								
	White								
	Hispanic	261	56.7%	260	75.0%	257	77.4%	257	52.1%
	All Students	270	57.4%	269	75.8%	266	78.2%	266	53.0%
2009	Black								
	White								
	Hispanic	265	51.7%	266	76.3%	266	77.8%	265	44.5%
	All Students	274	51.1%	275	75.3%	275	77.1%	274	44.2%
2008	Black								
	White								
	Hispanic	205	59.0%	206	69.9%	206	76.7%	205	48.3%
	All Students	218	57.8%	219	69.4%	219	76.7%	218	47.7%
2007	Black								
	White								
	Hispanic	176	50.6%	176	69.3%	176	80.7%	176	44.3%
	All Students	188	50.0%	188	67.6%	188	78.2%	188	43.1%

Florida College Entry-Level Placement Test Results
Passed All Three Tests: 2007-2010

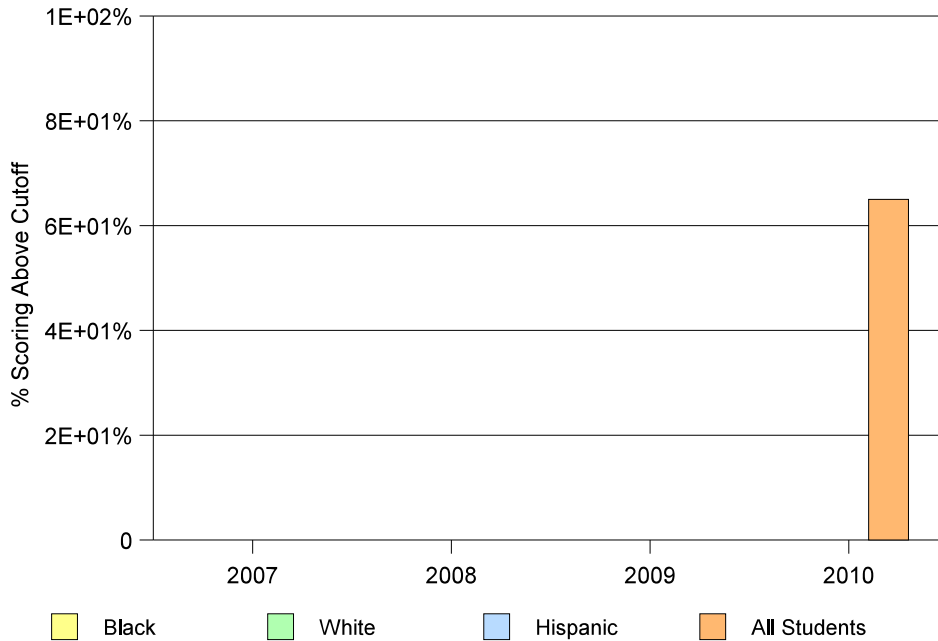


Readiness for College
Results from the Florida College Placement Test
2007 - 2010

Blank cells indicate missing data

		Math		Reading		Writing		All 3 Subjects	
		# Tested	% scoring above cutoff	# Tested	% scoring above cutoff	# Tested	% scoring above cutoff	# Tested	% scoring above cutoff
Mater Academy East									
2010	Black								
	White								
	Hispanic								
	All Students	20	80.0%	20	80.0%	20	85.0%	20	65.0%
2009	Black								
	White								
	Hispanic								
	All Students								
2008	Black								
	White								
	Hispanic								
	All Students								
2007	Black								
	White								
	Hispanic								
	All Students								

Florida College Entry-Level Placement Test Results
Passed All Three Tests: 2007-2010

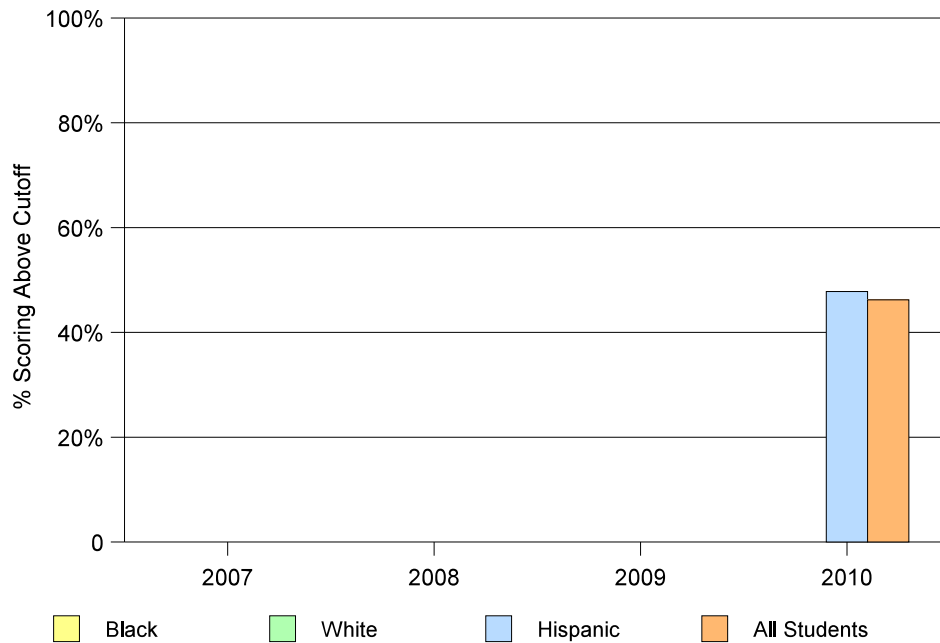


Readiness for College
Results from the Florida College Placement Test
2007 - 2010

Blank cells indicate missing data

		Math		Reading		Writing		All 3 Subjects	
		# Tested	% scoring above cutoff	# Tested	% scoring above cutoff	# Tested	% scoring above cutoff	# Tested	% scoring above cutoff
Mater Academy Lakes									
2010	Black								
	White								
	Hispanic	46	60.9%	46	65.2%	46	67.4%	46	47.8%
	All Students	52	59.6%	52	67.3%	52	67.3%	52	46.2%
2009	Black								
	White								
	Hispanic								
	All Students								
2008	Black								
	White								
	Hispanic								
	All Students								
2007	Black								
	White								
	Hispanic								
	All Students								

Florida College Entry-Level Placement Test Results
Passed All Three Tests: 2007-2010

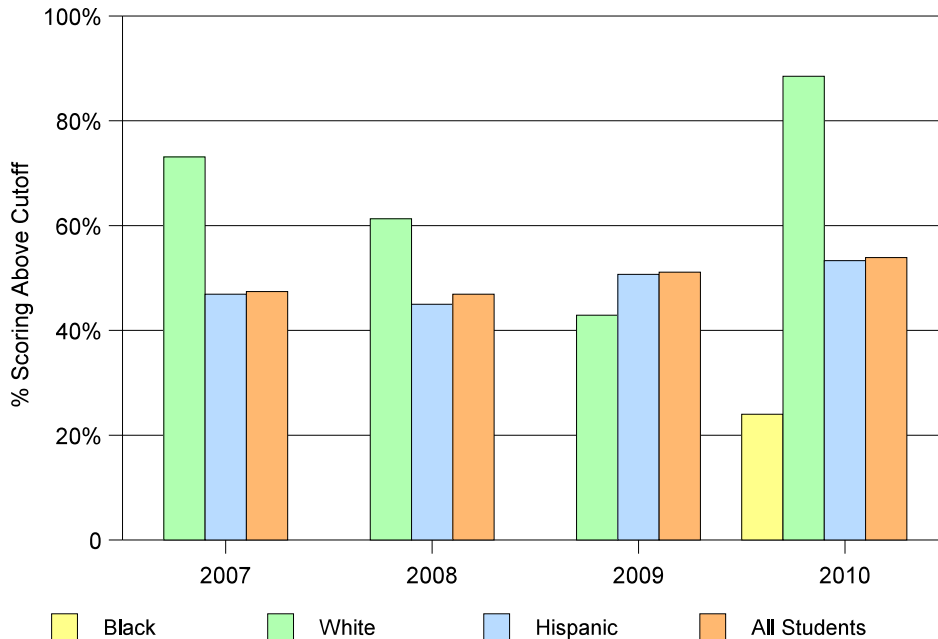


**Readiness for College
Results from the Florida College Placement Test
2007 - 2010**

Blank cells indicate missing data

		Math		Reading		Writing		All 3 Subjects	
		# Tested	% scoring above cutoff	# Tested	% scoring above cutoff	# Tested	% scoring above cutoff	# Tested	% scoring above cutoff
Miami Beach									
2010	Black	26	26.9%	25	56.0%	26	53.8%	25	24.0%
	White	27	88.9%	26	100.0%	27	100.0%	26	88.5%
	Hispanic	135	61.5%	136	75.0%	135	84.4%	135	53.3%
	All Students	193	60.6%	192	76.0%	193	82.4%	191	53.9%
2009	Black								
	White	14	42.9%	14	78.6%	14	85.7%	14	42.9%
	Hispanic	144	59.7%	144	69.4%	144	78.5%	144	50.7%
	All Students	178	59.0%	178	71.9%	178	79.8%	178	51.1%
2008	Black								
	White	31	61.3%	31	74.2%	31	80.6%	31	61.3%
	Hispanic	149	49.7%	149	70.5%	149	79.9%	149	45.0%
	All Students	207	50.7%	207	69.6%	207	79.7%	207	46.9%
2007	Black								
	White	26	73.1%	26	84.6%	26	88.5%	26	73.1%
	Hispanic	145	55.2%	145	67.6%	145	81.4%	145	46.9%
	All Students	192	55.2%	192	67.7%	192	81.8%	192	47.4%

**Florida College Entry-Level Placement Test Results
Passed All Three Tests: 2007-2010**

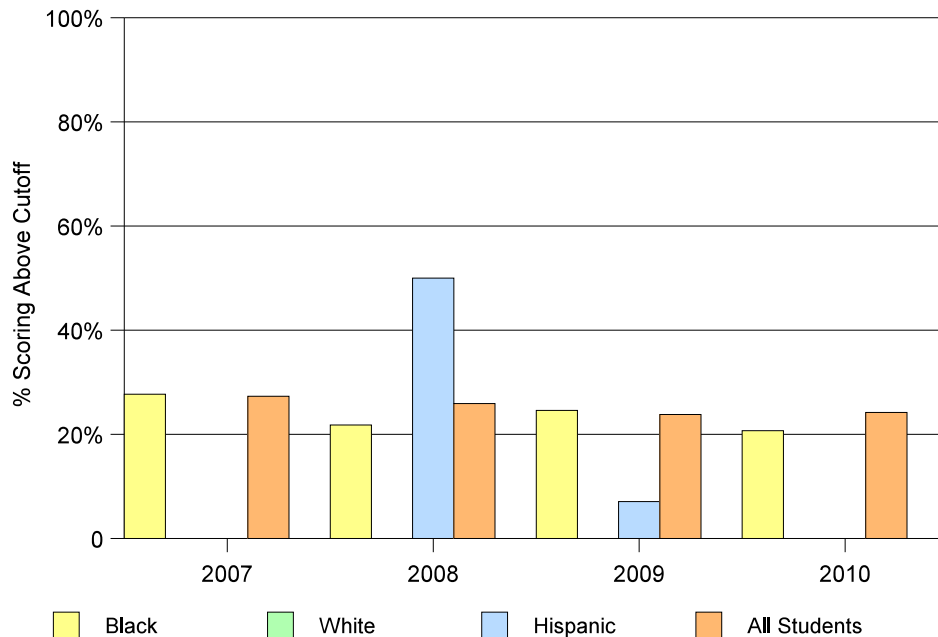


Readiness for College
Results from the Florida College Placement Test
2007 - 2010

Blank cells indicate missing data

		Math		Reading		Writing		All 3 Subjects	
		# Tested	% scoring above cutoff	# Tested	% scoring above cutoff	# Tested	% scoring above cutoff	# Tested	% scoring above cutoff
Miami Carol City									
2010	Black	141	26.2%	140	53.6%	141	53.9%	140	20.7%
	White								
	Hispanic								
	All Students	158	29.7%	157	54.1%	158	54.4%	157	24.2%
2009	Black	143	32.2%	143	48.3%	142	51.4%	142	24.6%
	White								
	Hispanic	14	14.3%	14	35.7%	14	71.4%	14	7.1%
	All Students	165	30.9%	165	47.3%	164	54.3%	164	23.8%
2008	Black	124	31.5%	124	47.6%	124	51.6%	124	21.8%
	White								
	Hispanic	10	60.0%	10	90.0%	10	60.0%	10	50.0%
	All Students	143	35.7%	143	51.7%	143	53.1%	143	25.9%
2007	Black	137	35.8%	138	55.1%	138	63.8%	137	27.7%
	White								
	Hispanic								
	All Students	150	35.3%	151	54.3%	151	64.2%	150	27.3%

Florida College Entry-Level Placement Test Results
Passed All Three Tests: 2007-2010

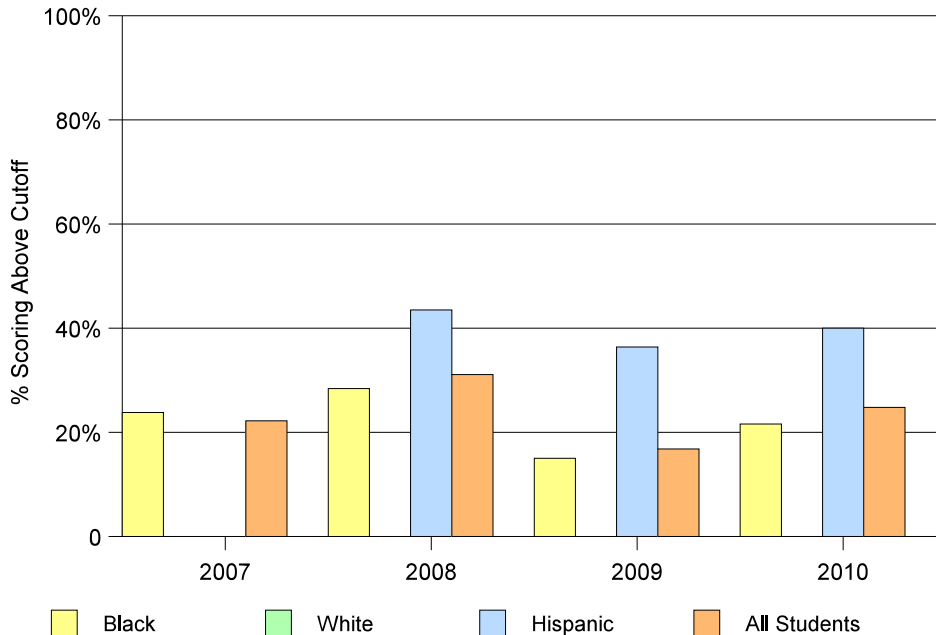


Readiness for College
Results from the Florida College Placement Test
2007 - 2010

Blank cells indicate missing data

		Math		Reading		Writing		All 3 Subjects	
		# Tested	% scoring above cutoff	# Tested	% scoring above cutoff	# Tested	% scoring above cutoff	# Tested	% scoring above cutoff
Miami Central									
2010	Black	103	34.9%	103	46.6%	102	38.2%	102	21.6%
	White								
	Hispanic	10	40.0%	40	70.0%	10	70.0%	10	40.0%
	All Students	118	36.4%	118	50.8%	117	43.6%	117	24.8%
2009	Black	100	18.0%	100	45.0%	100	43.0%	100	15.0%
	White								
	Hispanic	11	45.5%	11	45.5%	11	54.5%	11	36.4%
	All Students	119	20.2%	119	47.1%	119	45.4%	119	16.8%
2008	Black	110	39.1%	109	53.2%	109	58.7%	109	28.4%
	White								
	Hispanic	23	47.8%	23	60.9%	23	69.6%	23	43.5%
	All Students	136	40.4%	135	54.8%	135	61.5%	135	31.1%
2007	Black	130	33.1%	130	45.4%	130	53.1%	130	23.8%
	White								
	Hispanic								
	All Students	153	30.1%	153	47.1%	153	52.9%	153	22.2%

Florida College Entry-Level Placement Test Results
Passed All Three Tests: 2007-2010

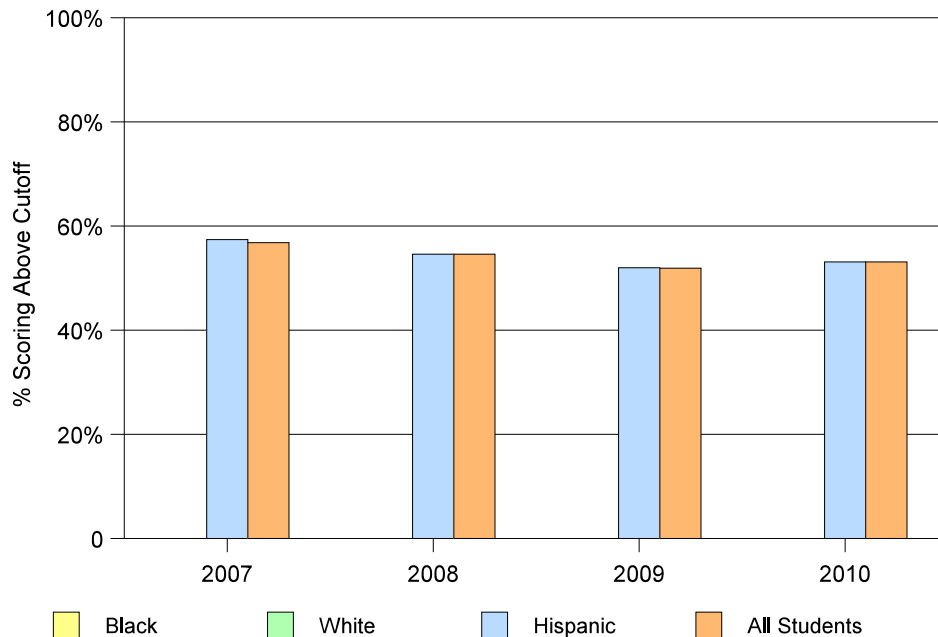


Readiness for College
Results from the Florida College Placement Test
2007 - 2010

Blank cells indicate missing data

		Math		Reading		Writing		All 3 Subjects	
		# Tested	% scoring above cutoff	# Tested	% scoring above cutoff	# Tested	% scoring above cutoff	# Tested	% scoring above cutoff
Miami Coral Park									
2010	Black								
	White								
	Hispanic	405	63.4%	403	76.9%	402	78.6%	401	53.1%
	All Students	433	63.3%	431	76.8%	430	78.6%	429	53.1%
2009	Black								
	White								
	Hispanic	432	57.6%	432	74.5%	431	77.7%	431	52.0%
	All Students	454	58.1%	454	74.4%	453	77.9%	453	51.9%
2008	Black								
	White								
	Hispanic	443	63.2%	443	75.8%	444	81.8%	443	54.6%
	All Students	476	63.9%	476	75.6%	477	81.6%	476	54.6%
2007	Black								
	White								
	Hispanic	441	66.2%	441	76.0%	441	83.7%	441	57.4%
	All Students	470	65.5%	470	76.0%	470	83.6%	470	56.8%

Florida College Entry-Level Placement Test Results
Passed All Three Tests: 2007-2010

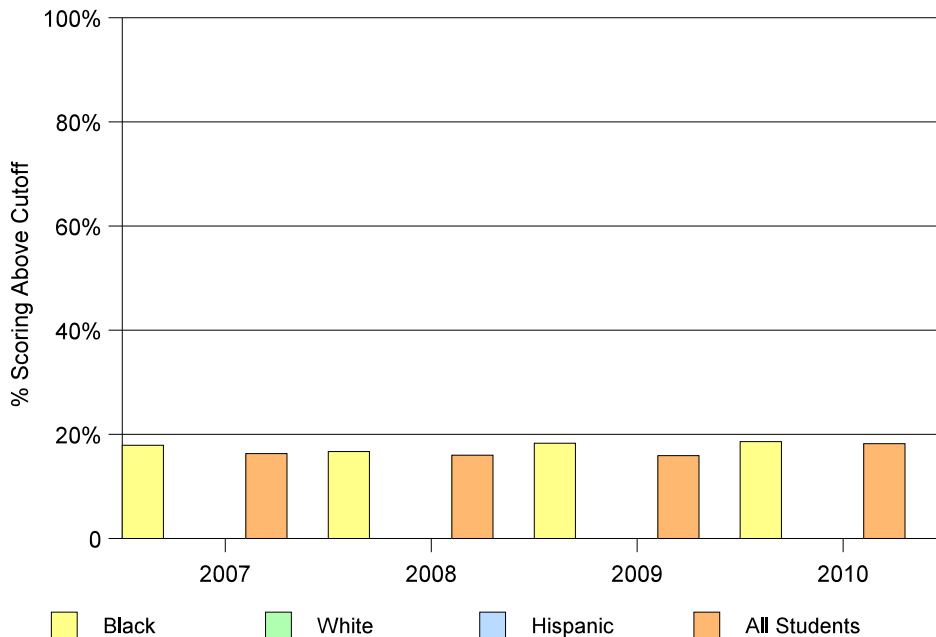


Readiness for College
Results from the Florida College Placement Test
2007 - 2010

Blank cells indicate missing data

		Math		Reading		Writing		All 3 Subjects	
		# Tested	% scoring above cutoff	# Tested	% scoring above cutoff	# Tested	% scoring above cutoff	# Tested	% scoring above cutoff
Miami Edison									
2010	Black	61	24.6%	61	42.6%	60	40.0%	59	18.6%
	White								
	Hispanic								
	All Students	68	23.5%	68	41.2%	67	38.8%	66	18.2%
2009	Black	60	31.7%	60	45.0%	60	43.3%	60	18.3%
	White								
	Hispanic								
	All Students	69	27.5%	69	42.0%	69	42.0%	69	15.9%
2008	Black	66	19.7%	66	39.4%	66	45.5%	66	16.7%
	White								
	Hispanic								
	All Students	76	22.4%	76	36.8%	75	44.0%	75	16.0%
2007	Black	39	23.1%	39	38.5%	39	43.6%	39	17.9%
	White								
	Hispanic								
	All Students	43	23.3%	43	34.9%	43	39.5%	43	16.3%

Florida College Entry-Level Placement Test Results
Passed All Three Tests: 2007-2010

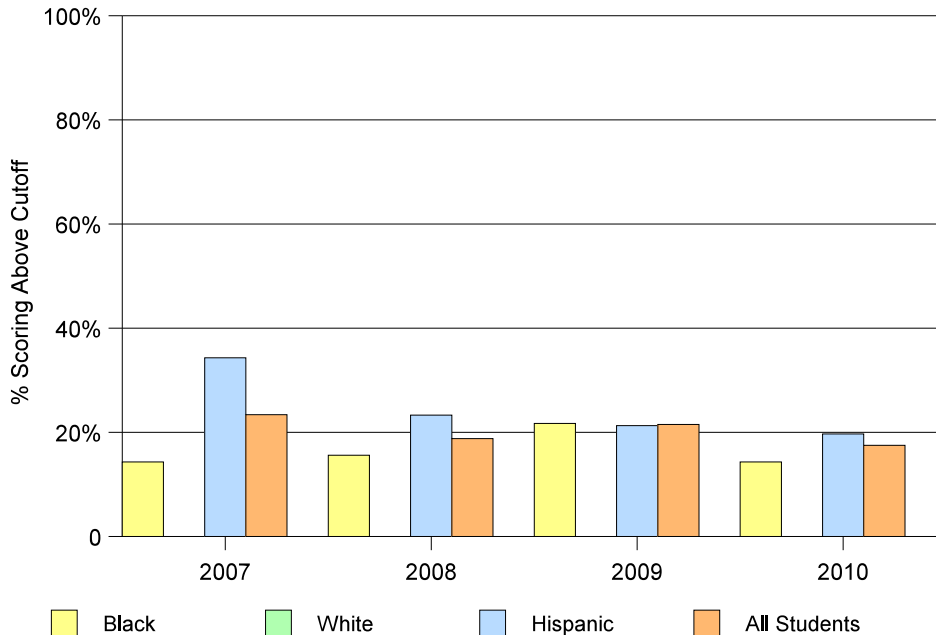


**Readiness for College
Results from the Florida College Placement Test
2007 - 2010**

Blank cells indicate missing data

		Math		Reading		Writing		All 3 Subjects	
		# Tested	% scoring above cutoff	# Tested	% scoring above cutoff	# Tested	% scoring above cutoff	# Tested	% scoring above cutoff
Miami Jackson									
2010	Black	56	17.8%	56	42.8%	56	46.4%	56	14.3%
	White								
	Hispanic	67	28.3%	68	42.6%	66	48.5%	66	19.7%
	All Students	127	24.4%	129	43.4%	127	47.2%	126	17.5%
2009	Black	45	26.7%	46	37.0%	46	45.7%	45	21.7%
	White								
	Hispanic	47	23.4%	47	44.7%	47	53.2%	47	21.3%
	All Students	93	24.7%	94	41.5%	94	48.9%	93	21.5%
2008	Black	32	18.8%	32	46.9%	32	37.5%	32	15.6%
	White								
	Hispanic	30	33.3%	30	53.3%	30	70.0%	30	23.3%
	All Students	64	28.1%	64	48.4%	64	54.7%	64	18.8%
2007	Black	42	23.8%	42	45.2%	42	50.0%	42	14.3%
	White								
	Hispanic	35	37.1%	35	62.9%	35	82.9%	35	34.3%
	All Students	77	29.9%	77	53.2%	77	64.9%	77	23.4%

**Florida College Entry-Level Placement Test Results
Passed All Three Tests: 2007-2010**

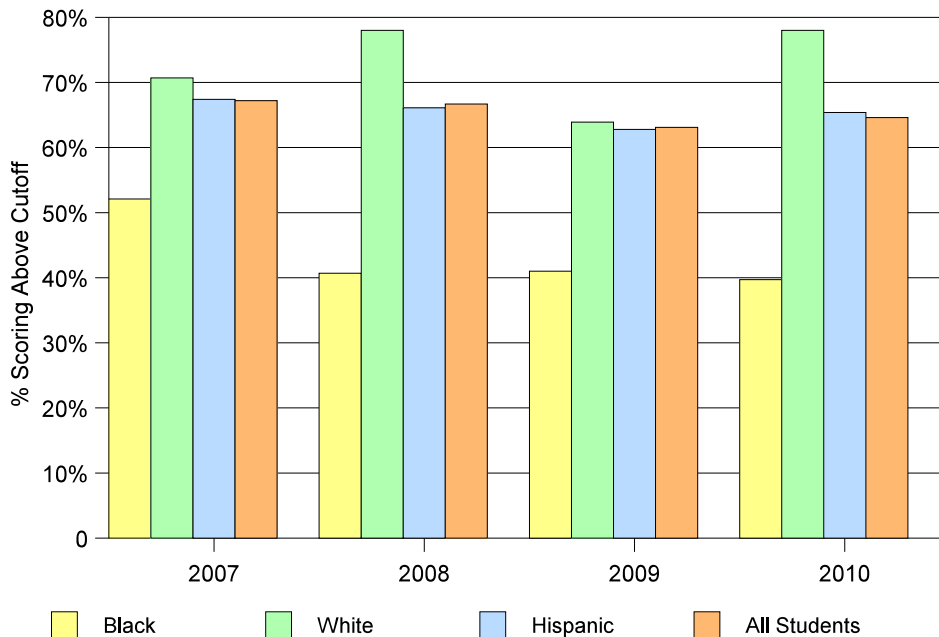


**Readiness for College
Results from the Florida College Placement Test
2007 - 2010**

Blank cells indicate missing data

		Math		Reading		Writing		All 3 Subjects	
		# Tested	% scoring above cutoff	# Tested	% scoring above cutoff	# Tested	% scoring above cutoff	# Tested	% scoring above cutoff
Miami Killian									
2010	Black	73	49.3%	73	63.0%	73	65.7%	73	39.7%
	White	91	81.3%	91	89.0%	91	86.8%	91	78.0%
	Hispanic	306	70.9%	302	82.8%	300	86.7%	298	65.4%
	All Students	483	70.4%	479	80.8%	477	83.6%	475	64.6%
2009	Black	61	47.5%	61	67.2%	61	68.9%	61	41.0%
	White	97	77.3%	97	90.7%	97	90.7%	97	63.9%
	Hispanic	298	69.8%	298	79.9%	298	83.6%	298	62.8%
	All Students	471	69.2%	471	80.9%	471	83.4%	471	63.1%
2008	Black	59	45.8%	59	62.7%	59	67.8%	59	40.7%
	White	123	81.3%	123	87.0%	123	89.4%	123	78.0%
	Hispanic	286	71.3%	286	82.5%	286	86.4%	286	66.1%
	All Students	487	71.3%	487	81.5%	487	85.0%	487	66.7%
2007	Black	49	61.2%	48	68.8%	48	68.8%	48	52.1%
	White	99	78.8%	99	81.8%	99	90.9%	99	70.7%
	Hispanic	288	74.3%	288	81.3%	288	85.8%	288	67.4%
	All Students	464	74.4%	463	80.3%	463	85.1%	463	67.2%

**Florida College Entry-Level Placement Test Results
Passed All Three Tests: 2007-2010**

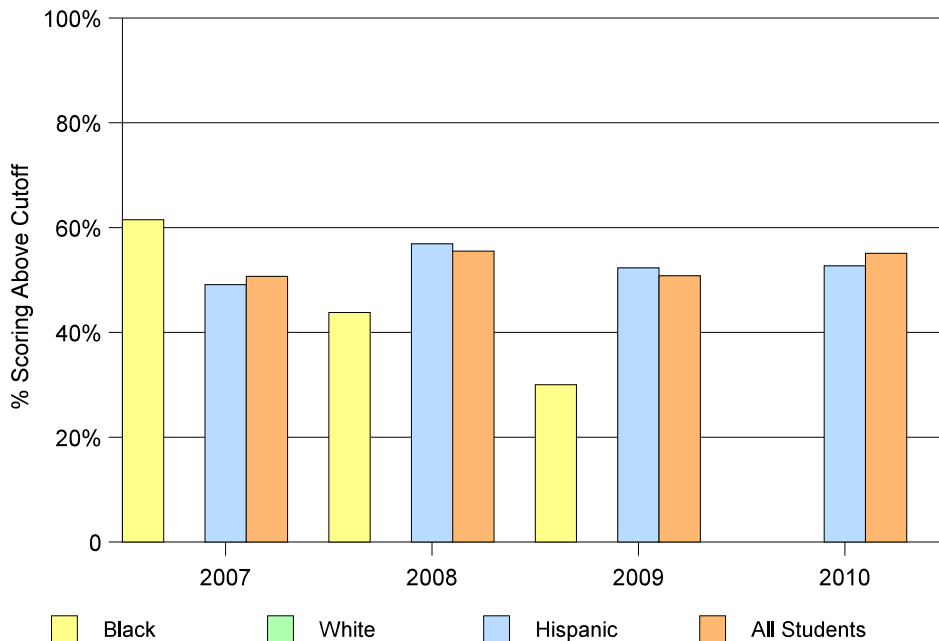


Readiness for College
Results from the Florida College Placement Test
2007 - 2010

Blank cells indicate missing data

		Math		Reading		Writing		All 3 Subjects	
		# Tested	% scoring above cutoff	# Tested	% scoring above cutoff	# Tested	% scoring above cutoff	# Tested	% scoring above cutoff
Miami Lakes Ed. Cntr.									
2010	Black								
	White								
	Hispanic	205	55.6%	204	86.3%	204	85.8%	203	52.7%
	All Students	245	58.4%	244	86.1%	244	85.2%	243	55.1%
2009	Black	10	30.0%	10	50.0%	10	50.0%	10	30.0%
	White								
	Hispanic	153	57.5%	153	81.0%	153	81.0%	153	52.3%
	All Students	181	55.2%	181	79.6%	181	80.1%	181	50.8%
2008	Black	16	56.2%	16	81.2%	16	75.0%	16	43.8%
	White								
	Hispanic	131	61.1%	130	83.1%	130	86.9%	130	56.9%
	All Students	165	60.6%	165	81.8%	165	85.5%	164	55.5%
2007	Black	13	61.5%	13	84.6%	13	84.6%	13	61.5%
	White								
	Hispanic	110	57.3%	111	75.7%	111	82.9%	110	49.1%
	All Students	138	59.4%	139	75.5%	139	82.7%	138	50.7%

Florida College Entry-Level Placement Test Results
Passed All Three Tests: 2007-2010

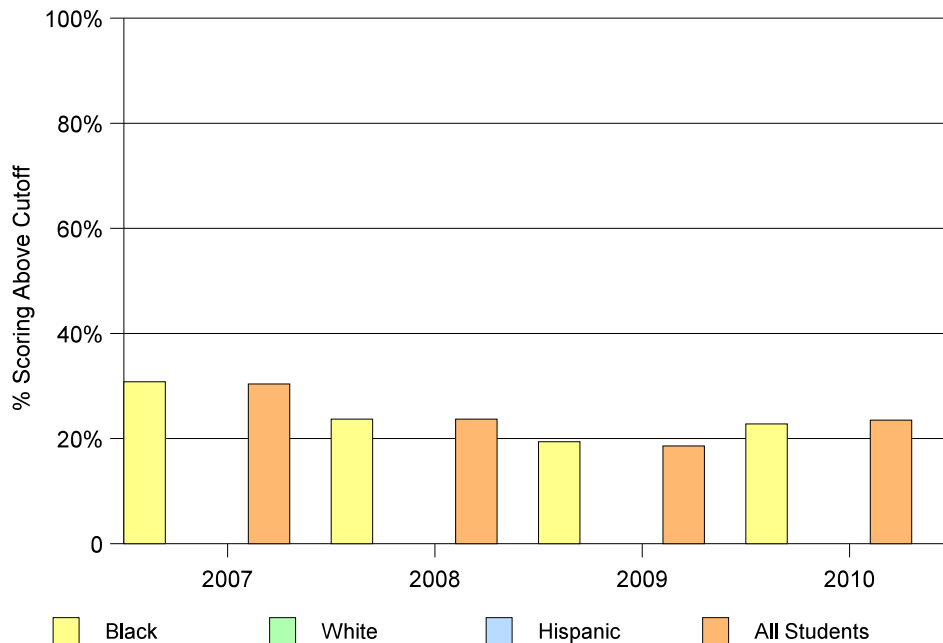


Readiness for College
Results from the Florida College Placement Test
2007 - 2010

Blank cells indicate missing data

		Math		Reading		Writing		All 3 Subjects	
		# Tested	% scoring above cutoff	# Tested	% scoring above cutoff	# Tested	% scoring above cutoff	# Tested	% scoring above cutoff
Miami Norland									
2010	Black	158	30.4%	159	52.2%	159	47.8%	158	22.8%
	White								
	Hispanic								
	All Students	170	30.6%	171	52.0%	171	48.5%	170	23.5%
2009	Black	130	30.8%	132	62.9%	131	53.4%	129	19.4%
	White								
	Hispanic								
	All Students	141	31.2%	143	49.0%	142	54.2%	140	18.6%
2008	Black	139	38.8%	139	52.5%	139	56.1%	139	23.7%
	White								
	Hispanic								
	All Students	152	38.2%	152	53.3	152	55.3%	152	23.7%
2007	Black	120	40.8%	120	60.8%	120	60.0%	120	30.8%
	White								
	Hispanic								
	All Students	135	40.7%	135	60.0%	135	61.5%	135	30.4%

Florida College Entry-Level Placement Test Results
Passed All Three Tests: 2007-2010

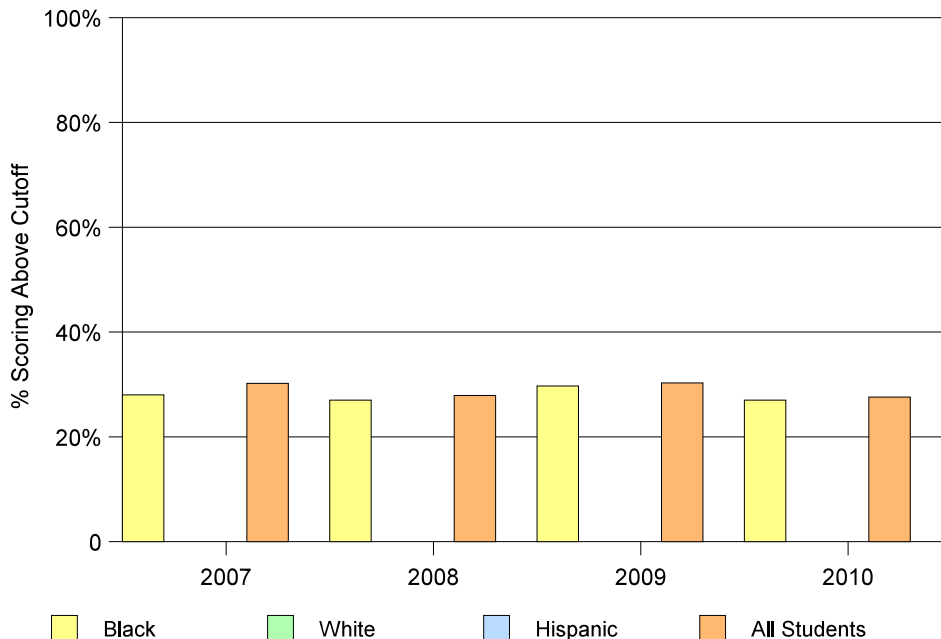


Readiness for College
Results from the Florida College Placement Test
2007 - 2010

Blank cells indicate missing data

		Math		Reading		Writing		All 3 Subjects	
		# Tested	% scoring above cutoff	# Tested	% scoring above cutoff	# Tested	% scoring above cutoff	# Tested	% scoring above cutoff
Miami Northwestern									
2010	Black	152	31.6%	153	58.2%	152	56.6%	152	27.0%
	White								
	Hispanic								
	All Students	156	32.1%	157	58.6%	156	57.7%	156	27.6%
2009	Black	148	33.1%	149	58.4%	149	59.7%	148	29.7%
	White								
	Hispanic								
	All Students	155	33.5%	156	57.7%	156	60.3%	155	30.3%
2008	Black	100	36.0%	100	53.0%	100	61.0%	100	27.0%
	White								
	Hispanic								
	All Students	111	36.9%	111	53.2%	111	62.2%	111	27.9%
2007	Black	150	36.0%	150	55.3%	150	56.0%	150	28.0%
	White								
	Hispanic								
	All Students	159	39.0%	159	56.0%	159	57.2%	159	30.2%

Florida College Entry-Level Placement Test Results
Passed All Three Tests: 2007-2010

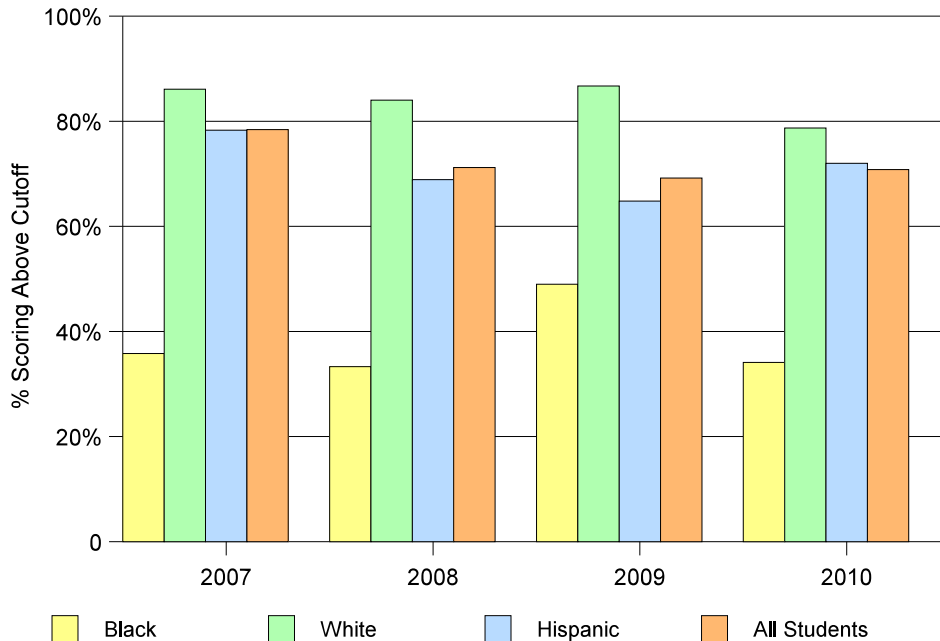


**Readiness for College
Results from the Florida College Placement Test
2007 - 2010**

Blank cells indicate missing data

		Math		Reading		Writing		All 3 Subjects	
		# Tested	% scoring above cutoff	# Tested	% scoring above cutoff	# Tested	% scoring above cutoff	# Tested	% scoring above cutoff
Miami Palmetto									
2010	Black	45	35.5%	44	52.3%	44	65.9%	44	34.1%
	White	139	80.6%	137	89.0%	136	92.6%	136	78.7%
	Hispanic	213	75.6%	212	87.7%	211	90.5%	211	72.0%
	All Students	413	73.6%	409	84.4%	407	88.7%	407	70.8%
2009	Black	49	53.1%	49	61.2%	49	67.3%	49	49.0%
	White	153	85.6%	153	87.6%	153	91.5%	153	86.7%
	Hispanic	199	70.9%	199	80.9%	199	88.4%	199	64.8%
	All Students	426	75.1%	426	81.0%	426	87.1%	426	69.2%
2008	Black	45	55.6%	45	48.9%	45	62.2%	45	33.3%
	White	151	87.4%	151	93.4%	151	95.4%	150	84.0%
	Hispanic	238	76.5%	238	79.8%	238	88.2%	238	68.9%
	All Students	469	79.1%	469	82.1%	469	88.3%	468	71.2%
2007	Black	53	50.9%	53	49.1%	53	66.0%	53	35.8%
	White	209	87.6%	209	93.8%	209	93.3%	209	86.1%
	Hispanic	245	81.6%	244	88.1%	244	91.0%	244	78.3%
	All Students	543	82.1%	542	87.1%	542	90.0%	542	78.4%

**Florida College Entry-Level Placement Test Results
Passed All Three Tests: 2007-2010**

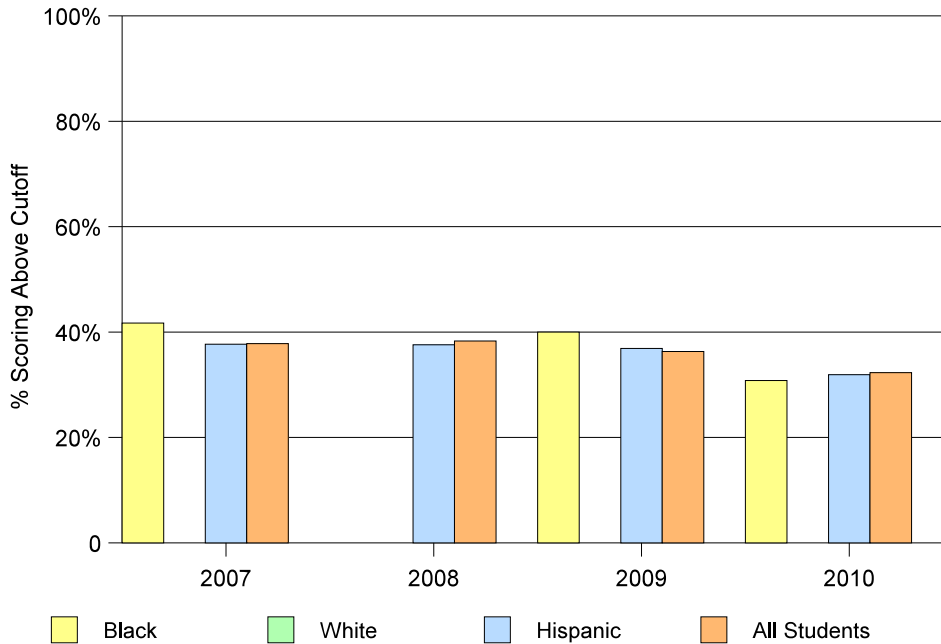


**Readiness for College
Results from the Florida College Placement Test
2007 - 2010**

Blank cells indicate missing data

		Math		Reading		Writing		All 3 Subjects	
		# Tested	% scoring above cutoff	# Tested	% scoring above cutoff	# Tested	% scoring above cutoff	# Tested	% scoring above cutoff
Miami Senior									
2010	Black	14	42.9%	13	84.6%	13	69.2%	13	30.8%
	White								
	Hispanic	310	39.7%	308	59.4%	307	63.5%	307	31.9%
	All Students	345	40.3%	342	60.8%	341	63.9%	641	32.3%
2009	Black	10	40.0%	40	70.0%	10	50.0%	10	40.0%
	White								
	Hispanic	318	43.1%	319	61.4%	319	73.7%	317	36.9%
	All Students	348	43.1%	349	61.0%	349	72.8%	347	36.3%
2008	Black								
	White								
	Hispanic	300	48.0%	298	65.8%	298	73.2%	298	37.6%
	All Students	329	48.6%	326	66.0%	326	73.6%	326	38.3%
2007	Black	12	41.7%	12	91.7%	12	66.7%	12	41.7%
	White								
	Hispanic	281	44.1%	281	62.6%	281	76.9%	281	37.7%
	All Students	315	44.1%	315	63.2%	315	76.5%	315	37.8%

**Florida College Entry-Level Placement Test Results
Passed All Three Tests: 2007-2010**

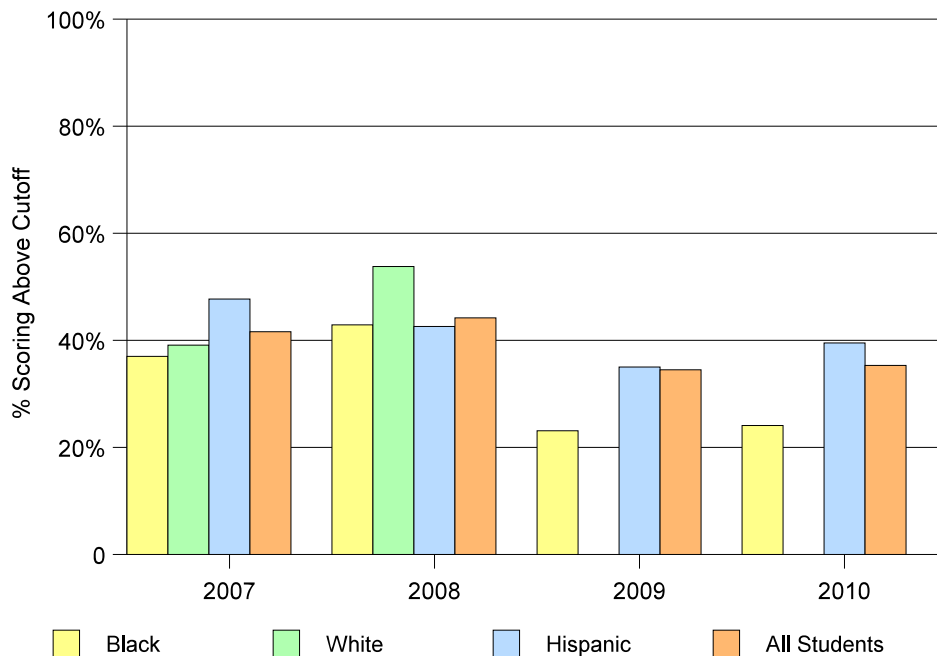


**Readiness for College
Results from the Florida College Placement Test
2007 - 2010**

Blank cells indicate missing data

		Math		Reading		Writing		All 3 Subjects	
		# Tested	% scoring above cutoff	# Tested	% scoring above cutoff	# Tested	% scoring above cutoff	# Tested	% scoring above cutoff
Miami Southridge									
2010	Black	84	29.8%	85	51.8%	85	62.3%	83	24.1%
	White								
	Hispanic	127	44.1%	125	64.0%	124	67.7%	124	39.5%
	All Students	225	40.0%	224	59.8%	223	65.5%	221	35.3%
2009	Black	52	26.9%	53	45.3%	53	52.8%	52	23.1%
	White								
	Hispanic	123	46.3%	123	62.6%	123	74.8%	123	35.0%
	All Students	197	43.1%	198	59.1%	198	70.2%	197	34.5%
2008	Black	70	44.3%	70	65.7%	70	68.6%	70	42.9%
	White	26	61.5%	26	73.1%	26	80.8%	26	53.8%
	Hispanic	137	48.2%	136	69.1%	136	77.2%	136	42.6%
	All Students	243	48.6%	242	69.4%	242	76.0%	242	44.2%
2007	Black	54	48.1%	55	56.4%	55	72.7%	54	37.0%
	White	23	39.1%	23	60.9%	23	65.2%	23	39.1%
	Hispanic	107	58.9%	107	67.3%	107	70.1%	107	47.7%
	All Students	202	52.0%	203	64.0%	203	70.4%	202	41.6%

**Florida College Entry-Level Placement Test Results
Passed All Three Tests: 2007-2010**

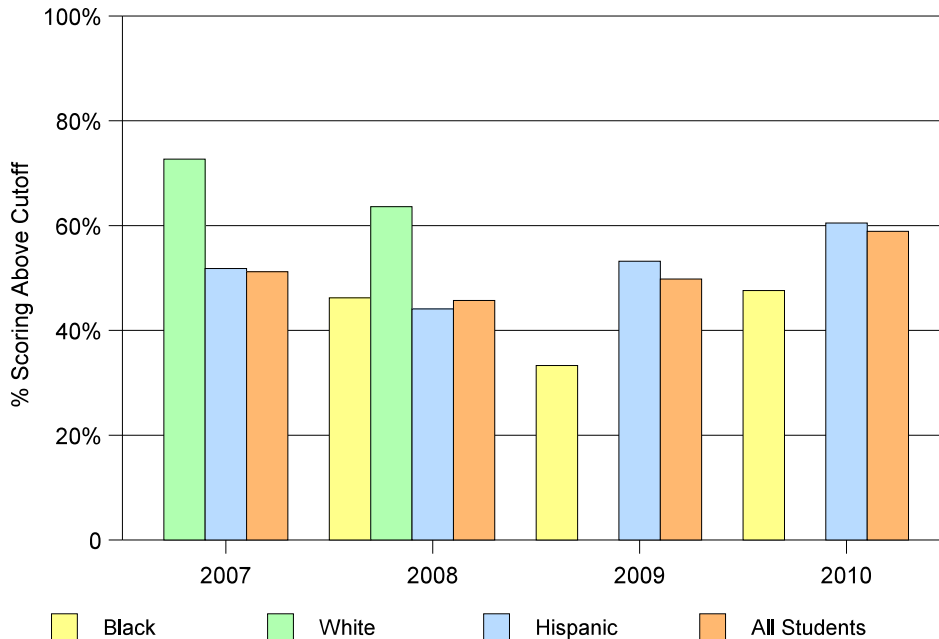


**Readiness for College
Results from the Florida College Placement Test
2007 - 2010**

Blank cells indicate missing data

		Math		Reading		Writing		All 3 Subjects	
		# Tested	% scoring above cutoff	# Tested	% scoring above cutoff	# Tested	% scoring above cutoff	# Tested	% scoring above cutoff
Miami Springs									
2010	Black	22	59.1%	22	54.5%	21	57.1%	21	47.6%
	White								
	Hispanic	217	70.0%	216	77.3%	215	78.1%	215	60.5%
	All Students	266	68.0%	265	74.3%	263	76.4%	263	58.9%
2009	Black	12	41.7%	12	58.3%	12	66.7%	12	33.3%
	White								
	Hispanic	244	57.0%	245	66.5%	241	74.7%	241	53.2%
	All Students	282	56.4%	283	67.5%	279	73.5%	279	49.8%
2008	Black	27	48.1%	26	61.5%	26	61.5%	26	46.2%
	White	11	63.6%	11	90.9%	11	90.9%	11	63.6%
	Hispanic	333	54.7%	335	65.7%	333	72.1%	333	44.1%
	All Students	388	55.7%	389	67.1%	387	72.1%	387	45.7%
2007	Black								
	White	11	81.8%	11	81.8%	11	100.0%	11	72.7%
	Hispanic	255	64.3%	256	75.0%	256	78.1%	255	51.8%
	All Students	293	62.8%	294	74.1%	294	78.2%	293	51.2%

**Florida College Entry-Level Placement Test Results
Passed All Three Tests: 2007-2010**

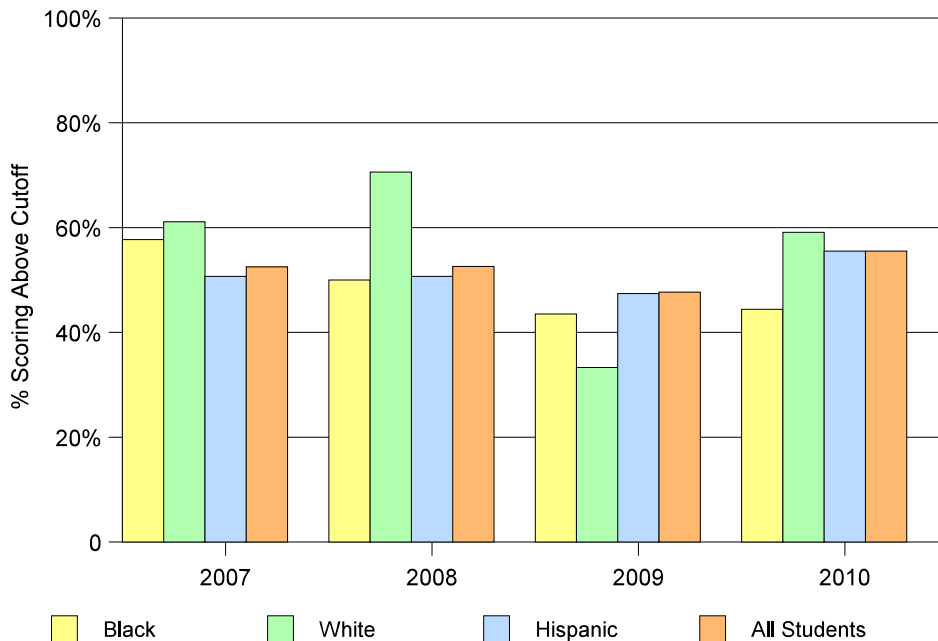


**Readiness for College
Results from the Florida College Placement Test
2007 - 2010**

Blank cells indicate missing data

		Math		Reading		Writing		All 3 Subjects	
		# Tested	% scoring above cutoff	# Tested	% scoring above cutoff	# Tested	% scoring above cutoff	# Tested	% scoring above cutoff
Miami Sunset									
2010	Black	27	48.1%	27	77.8%	27	74.1%	27	44.4%
	White	22	59.1%	22	86.4%	22	86.4%	22	59.1%
	Hispanic	330	60.3%	326	74.5%	326	80.1%	324	55.5%
	All Students	390	60.3%	386	75.4%	386	80.1%	384	55.5%
2009	Black	23	60.9%	23	56.5%	23	60.9%	22	43.5%
	White	18	55.6%	18	72.2%	18	66.7%	18	33.3%
	Hispanic	372	57.0%	372	69.9%	373	74.8%	371	47.4%
	All Students	436	58.0%	436	69.3%	437	73.7%	434	47.7%
2008	Black	14	50.0%	14	57.1%	14	71.4%	14	50.0%
	White	34	79.4%	34	91.2%	34	91.2%	34	70.6%
	Hispanic	376	59.3%	378	71.2%	376	81.1%	375	50.7%
	All Students	448	61.2%	450	72.7%	448	81.7%	447	52.6%
2007	Black	26	73.1%	26	76.9%	26	76.9%	26	57.7%
	White	36	66.7%	37	81.1%	37	86.5%	36	61.1%
	Hispanic	339	60.5%	340	72.4%	340	79.7%	339	50.7%
	All Students	417	62.1%	419	73.5%	419	80.4%	417	52.5%

**Florida College Entry-Level Placement Test Results
Passed All Three Tests: 2007-2010**

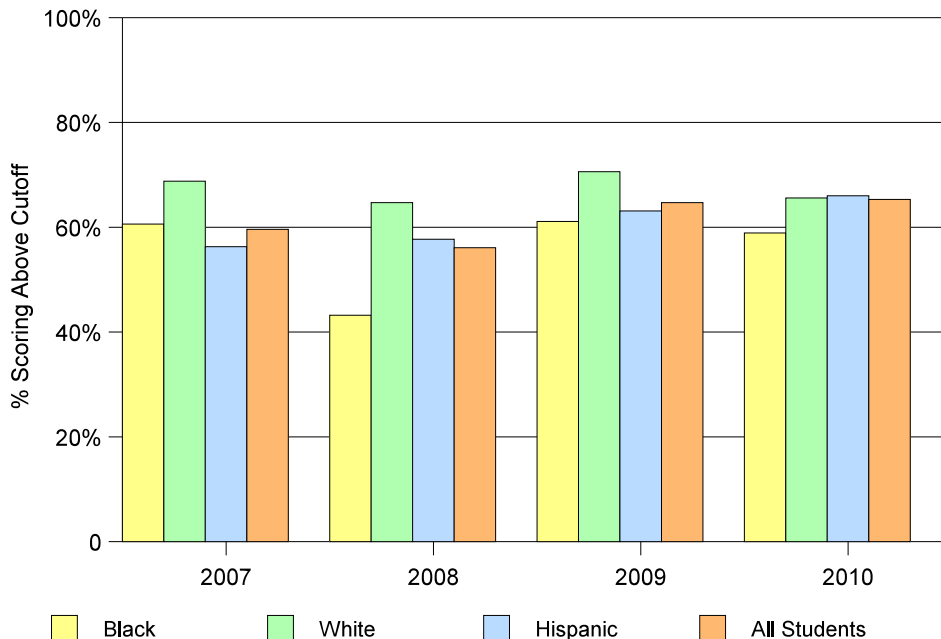


**Readiness for College
Results from the Florida College Placement Test
2007 - 2010**

Blank cells indicate missing data

		Math		Reading		Writing		All 3 Subjects	
		# Tested	% scoring above cutoff	# Tested	% scoring above cutoff	# Tested	% scoring above cutoff	# Tested	% scoring above cutoff
Robert Morgan Educational Center									
2010	Black	56	66.1%	56	78.6%	56	85.7%	56	58.9%
	White	32	65.6%	32	90.6%	32	96.9%	32	65.6%
	Hispanic	240	70.8%	239	86.6%	240	88.3%	238	66.0%
	All Students	339	70.2%	338	85.8%	339	89.1%	337	65.3%
2009	Black	54	74.1%	54	79.6%	54	81.5%	54	61.1%
	White	51	70.6%	51	88.2%	51	94.1%	51	70.6%
	Hispanic	198	68.2%	198	80.3%	198	88.4%	198	63.1%
	All Students	312	70.2%	312	81.7%	312	88.5%	312	64.7%
2008	Black	88	53.4%	88	73.9%	88	79.5%	88	43.2%
	White	68	72.1%	68	80.9%	68	85.3%	68	64.7%
	Hispanic	209	69.4%	208	76.0%	208	84.1%	208	57.7%
	All Students	388	66.0%	387	77.0%	387	84.0%	387	56.1%
2007	Black	71	67.6%	71	80.3%	71	83.1%	71	60.6%
	White	64	76.6%	64	84.4%	64	90.6%	64	68.8%
	Hispanic	222	65.3%	222	74.8%	222	82.0%	222	56.3%
	All Students	369	67.8%	369	77.5%	369	84.0%	369	59.6%

**Florida College Entry-Level Placement Test Results
Passed All Three Tests: 2007-2010**

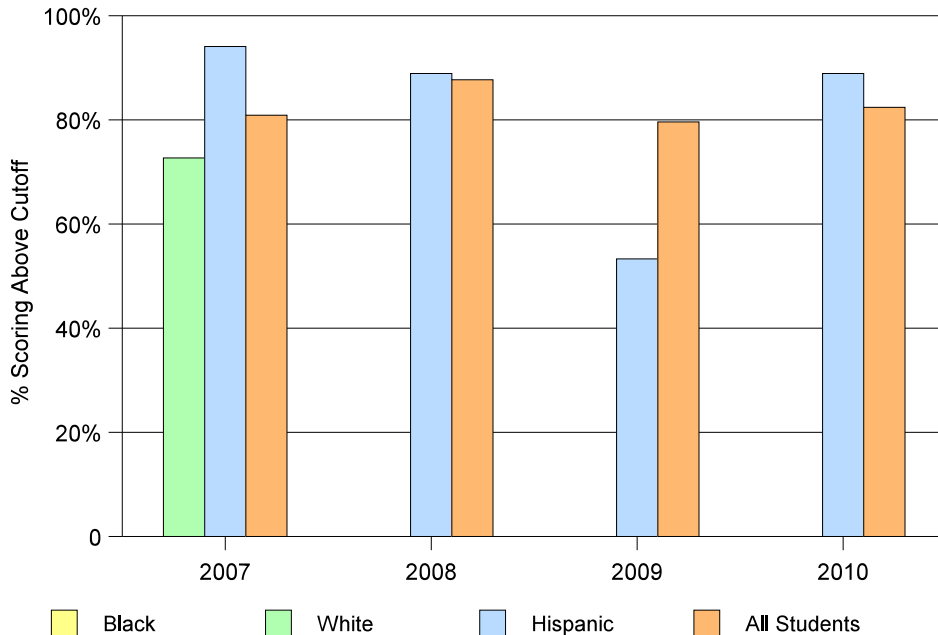


**Readiness for College
Results from the Florida College Placement Test
2007 - 2010**

Blank cells indicate missing data

		Math		Reading		Writing		All 3 Subjects	
		# Tested	% scoring above cutoff	# Tested	% scoring above cutoff	# Tested	% scoring above cutoff	# Tested	% scoring above cutoff
New World School of the Arts									
2010	Black								
	White								
	Hispanic	18	88.9%	18	100.0%	18	100.0%	18	88.9%
	All Students	34	82.4%	34	100.0%	34	100.0%	34	82.4%
2009	Black								
	White								
	Hispanic	30	90.0%	30	96.7%	30	100.0%	30	53.3%
	All Students	49	81.6%	49	93.9%	49	93.9%	49	79.6%
2008	Black								
	White								
	Hispanic	27	88.9%	27	96.3%	27	96.3%	27	88.9%
	All Students	57	87.7%	57	94.7%	57	96.5%	57	87.7%
2007	Black								
	White	11	72.7%	11	100.0%	11	100.0%	11	72.7%
	Hispanic	17	94.1%	17	100.0%	17	100.0%	17	94.1%
	All Students	47	83.0%	47	91.5%	47	93.6%	47	80.9%

**Florida College Entry-Level Placement Test Results
Passed All Three Tests: 2007-2010**

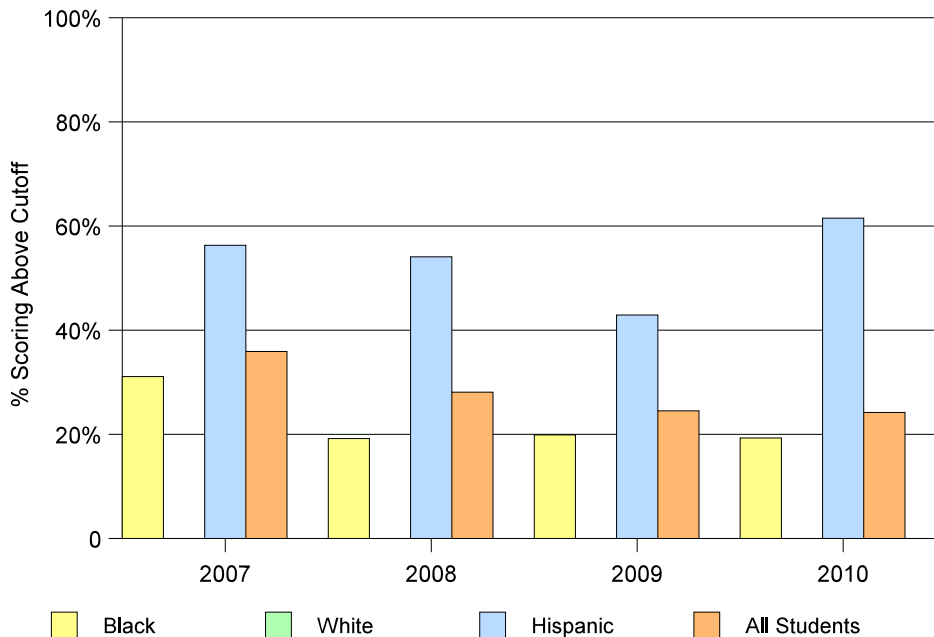


Readiness for College Results from the Florida College Placement Test 2007 - 2010

Blank cells indicate missing data

		Math		Reading		Writing		All 3 Subjects	
		# Tested	% scoring above cutoff	# Tested	% scoring above cutoff	# Tested	% scoring above cutoff	# Tested	% scoring above cutoff
North Miami									
2010	Black	218	24.8%	221	57.0%	219	49.8%	217	19.3%
	White								
	Hispanic	26	61.5%	26	84.6%	26	88.5%	26	61.5%
	All Students	258	29.1%	261	60.5%	258	54.3%	256	24.2%
2009	Black	182	25.8%	181	47.0%	181	47.0%	181	19.9%
	White								
	Hispanic	31	58.1%	31	80.6%	31	80.6%	31	42.9%
	All Students	217	30.9%	216	51.9%	216	51.9%	216	24.5%
2008	Black	172	26.7%	173	45.1%	172	53.5%	172	19.2%
	White								
	Hispanic	37	62.2%	37	64.9%	37	70.3%	37	54.1%
	All Students	221	35.7%	222	50.5%	221	58.8%	221	28.1%
2007	Black	219	40.6%	220	53.6%	220	59.5%	219	31.1%
	White								
	Hispanic	32	62.5%	32	68.8%	32	87.5%	32	56.3%
	All Students	273	45.1%	274	57.7%	274	63.9%	273	35.9%

Florida College Entry-Level Placement Test Results
Passed All Three Tests: 2007-2010

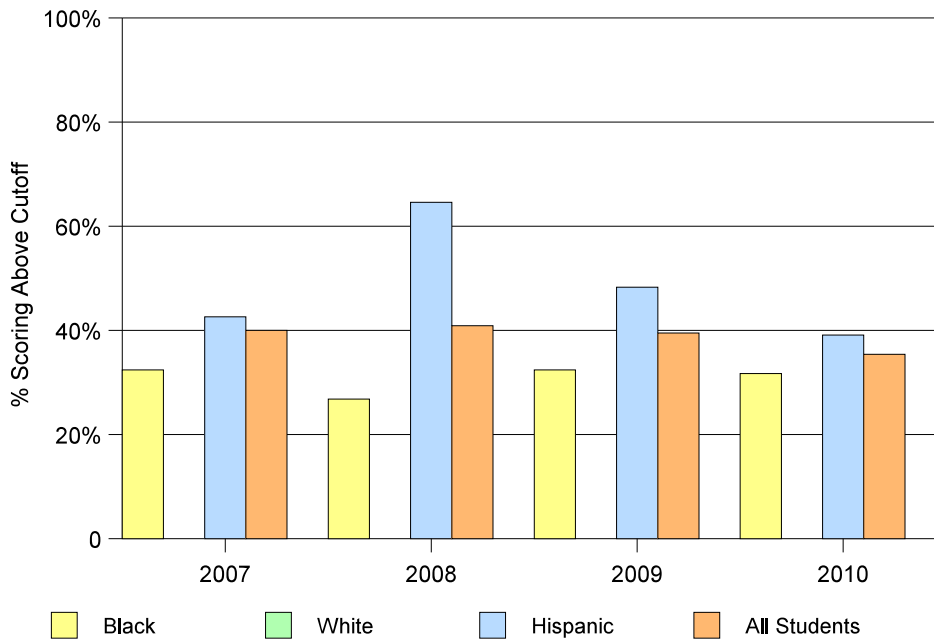


**Readiness for College
Results from the Florida College Placement Test
2007 - 2010**

Blank cells indicate missing data

		Math		Reading		Writing		All 3 Subjects	
		# Tested	% scoring above cutoff	# Tested	% scoring above cutoff	# Tested	% scoring above cutoff	# Tested	% scoring above cutoff
North Miami Beach									
2010	Black	226	37.2%	225	59.1%	225	56.0%	224	31.7%
	White								
	Hispanic	66	45.4%	65	76.9%	64	68.7%	64	39.1%
	All Students	313	41.5%	311	64.3%	309	59.9%	308	35.4%
2009	Black	213	44.6%	214	58.4%	213	61.0%	213	32.4%
	White								
	Hispanic	58	58.6%	59	71.2%	59	69.5%	58	48.3%
	All Students	299	50.5%	301	63.5%	300	64.7%	299	39.5%
2008	Black	154	31.2%	154	59.1%	153	62.1%	153	26.8%
	White								
	Hispanic	48	75.0%	48	75.0%	48	77.1%	48	64.6%
	All Students	234	46.2%	233	66.5%	232	68.1%	232	40.9%
2007	Black	176	46.6%	176	52.3%	176	64.1%	176	32.4%
	White								
	Hispanic	54	48.1%	54	68.5%	54	66.7%	54	42.6%
	All Students	260	50.8%	260	59.6%	260	65.4%	260	40.0%

**Florida College Entry-Level Placement Test Results
Passed All Three Tests: 2007-2010**

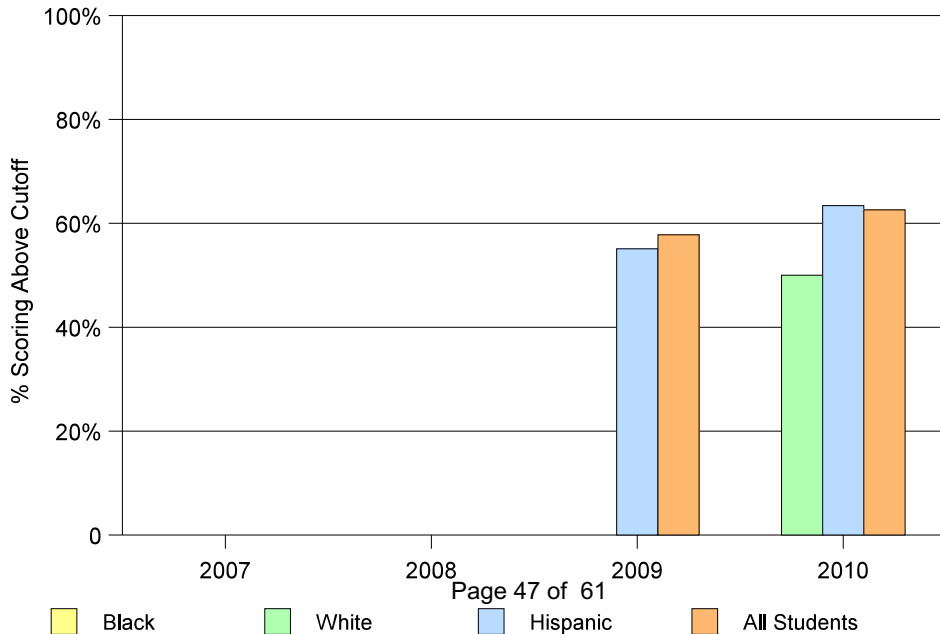


Readiness for College
Results from the Florida College Placement Test
2007 - 2010

Blank cells indicate missing data

		Math		Reading		Writing		All 3 Subjects	
		# Tested	% scoring above cutoff	# Tested	% scoring above cutoff	# Tested	% scoring above cutoff	# Tested	% scoring above cutoff
Ronald W. Reagan/Doral									
2010	Black								
	White	10	50.0%	10	90.0%	10	80.0%	10	50.0%
	Hispanic	250	67.2%	247	85.4%	247	86.2%	246	63.4%
	All Students	277	66.8%	274	85.4%	274	86.1%	273	62.6%
2009	Black								
	White								
	Hispanic	234	63.2%	234	79.3%	234	79.5%	234	55.1%
	All Students	256	65.2%	256	75.4%	256	80.5%	256	57.8%
2008	Black								
	White								
	Hispanic								
	All Students								
2007	Black								
	White								
	Hispanic								
	All Students								

Florida College Entry-Level Placement Test Results
Passed All Three Tests: 2007-2010

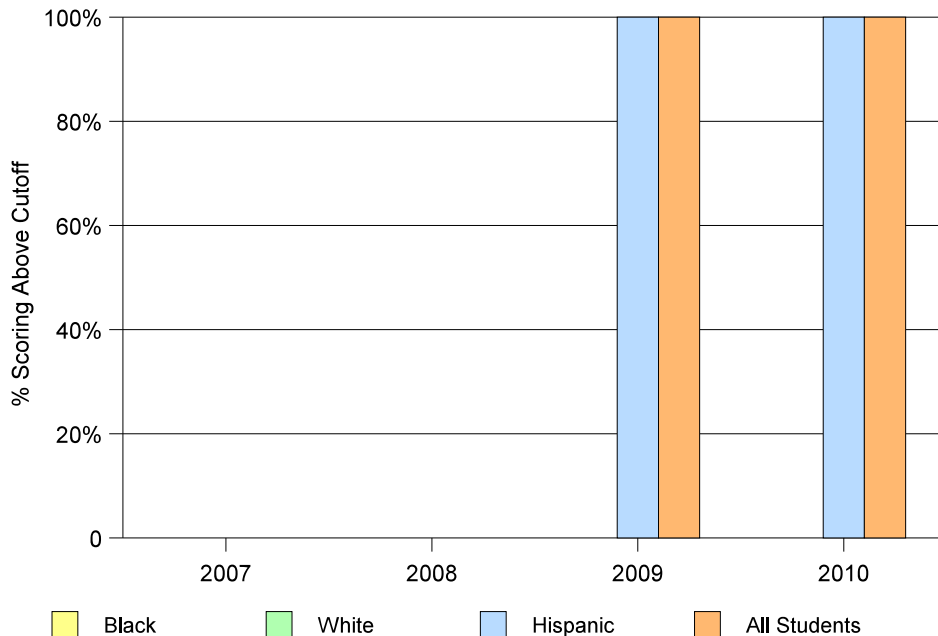


Readiness for College
Results from the Florida College Placement Test
2007 - 2010

Blank cells indicate missing data

		Math		Reading		Writing		All 3 Subjects	
		# Tested	% scoring above cutoff	# Tested	% scoring above cutoff	# Tested	% scoring above cutoff	# Tested	% scoring above cutoff
School/Adv. Studies, Homestead									
2010	Black								
	White								
	Hispanic	10	100.0%	10	100.0%	10	100.0%	10	100.0%
	All Students	25	100.0%	25	100.0%	25	100.0%	25	100.0%
2009	Black								
	White								
	Hispanic	36	100.0%	36	100.0%	36	100.0%	36	100.0%
	All Students	47	100.0%	47	100.0%	47	100.0%	47	100.0%
2008	Black								
	White								
	Hispanic								
	All Students								
2007	Black								
	White								
	Hispanic								
	All Students								

Florida College Entry-Level Placement Test Results
Passed All Three Tests: 2007-2010

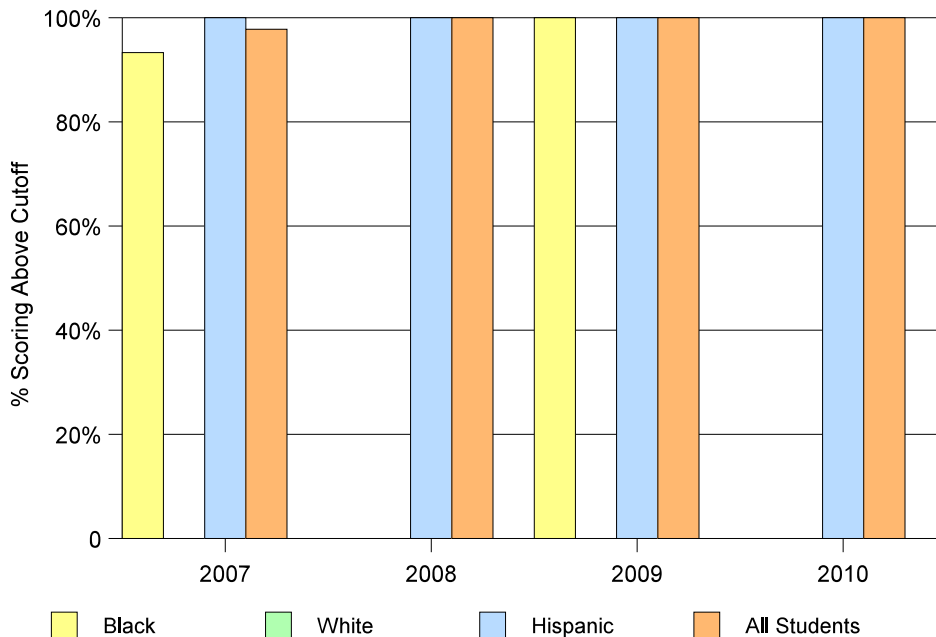


Readiness for College
Results from the Florida College Placement Test
2007 - 2010

Blank cells indicate missing data

		Math		Reading		Writing		All 3 Subjects	
		# Tested	% scoring above cutoff	# Tested	% scoring above cutoff	# Tested	% scoring above cutoff	# Tested	% scoring above cutoff
School/Adv. Studies, North									
2010	Black								
	White								
	Hispanic	10	100.0%	10	100.0%	10	100.0%	10	100.0%
	All Students	33	100.0%	33	100.0%	33	100.0%	33	100.0%
2009	Black	13	100.0%	13	100.0%	13	100.0%	13	100.0%
	White								
	Hispanic	13	100.0%	13	100.0%	13	100.0%	13	100.0%
	All Students	39	100.0%	39	100.0%	39	100.0%	39	100.0%
2008	Black								
	White								
	Hispanic	12	100.0%	12	100.0%	12	100.0%	12	100.0%
	All Students	33	100.0%	33	100.0%	33	100.0%	33	100.0%
2007	Black	15	93.3%	15	100.0%	15	100.0%	15	93.3%
	White								
	Hispanic	16	100.0%	16	100.0%	16	100.0%	16	100.0%
	All Students	46	97.8%	46	100.0%	46	100.0%	46	97.8%

Florida College Entry-Level Placement Test Results
Passed All Three Tests: 2007-2010

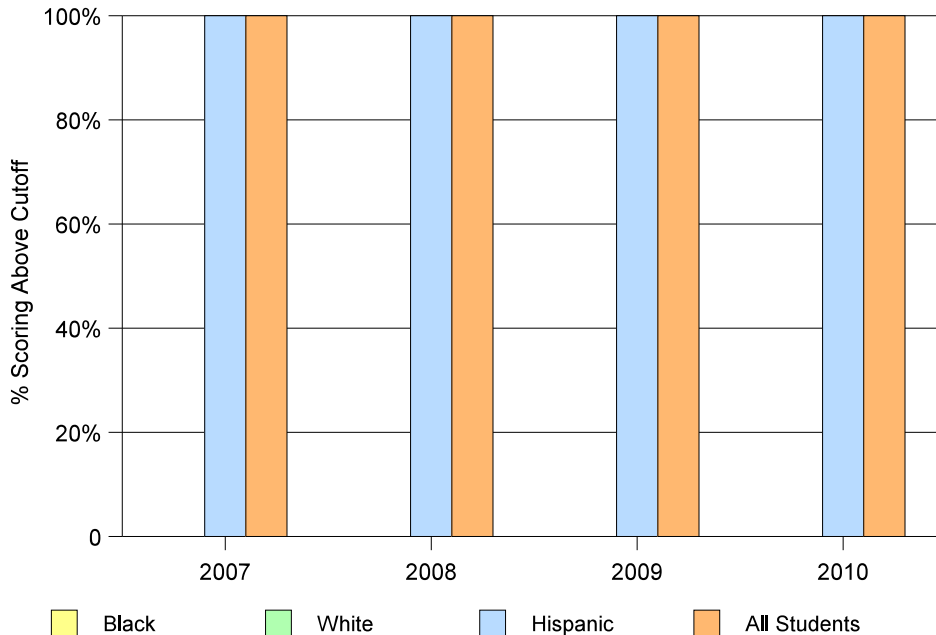


Readiness for College
Results from the Florida College Placement Test
2007 - 2010

Blank cells indicate missing data

		Math		Reading		Writing		All 3 Subjects	
		# Tested	% scoring above cutoff	# Tested	% scoring above cutoff	# Tested	% scoring above cutoff	# Tested	% scoring above cutoff
School/Adv. Studies, South									
2010	Black								
	White								
	Hispanic	47	100.0%	57	100.0%	57	100.0%	57	100.0%
	All Students	69	100.0%	69	100.0%	69	100.0%	69	100.0%
2009	Black								
	White								
	Hispanic	35	100.0%	35	100.0%	35	100.0%	35	100.0%
	All Students	68	100.0%	68	100.0%	68	100.0%	68	100.0%
2008	Black								
	White								
	Hispanic	45	100.0%	45	100.0%	45	100.0%	45	100.0%
	All Students	76	100.0%	76	100.0%	76	100.0%	76	100.0%
2007	Black								
	White								
	Hispanic	45	100.0%	45	100.0%	45	100.0%	45	100.0%
	All Students	67	100.0%	67	100.0%	67	100.0%	67	100.0%

Florida College Entry-Level Placement Test Results
Passed All Three Tests: 2007-2010

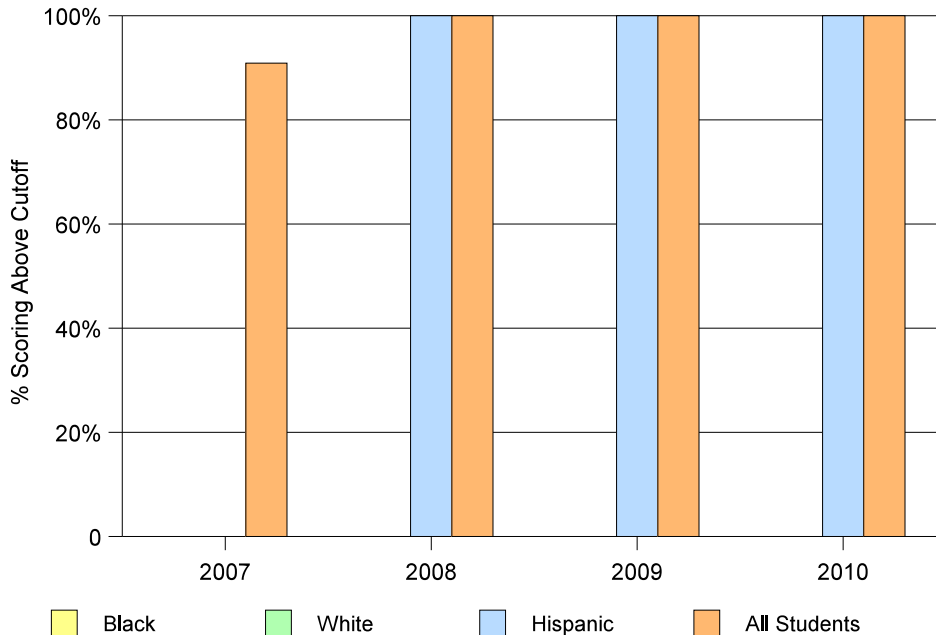


Readiness for College
Results from the Florida College Placement Test
2007 - 2010

Blank cells indicate missing data

		Math		Reading		Writing		All 3 Subjects	
		# Tested	% scoring above cutoff	# Tested	% scoring above cutoff	# Tested	% scoring above cutoff	# Tested	% scoring above cutoff
School/Adv. Studies, Wolfson									
2010	Black								
	White								
	Hispanic	10	100.0%	10	100.0%	10	100.0%	10	100.0%
	All Students	36	100.0%	36	100.0%	36	100.0%	36	100.0%
2009	Black								
	White								
	Hispanic	10	100.0%	10	100.0%	10	100.0%	10	100.0%
	All Students	26	100.0%	26	100.0%	26	100.0%	26	100.0%
2008	Black								
	White								
	Hispanic	10	100.0%	10	100.0%	10	100.0%	10	100.0%
	All Students	32	100.0%	32	100.0%	32	100.0%	32	100.0%
2007	Black								
	White								
	Hispanic								
	All Students	22	90.9%	22	100.0%	22	100.0%	22	90.9%

Florida College Entry-Level Placement Test Results
Passed All Three Tests: 2007-2010

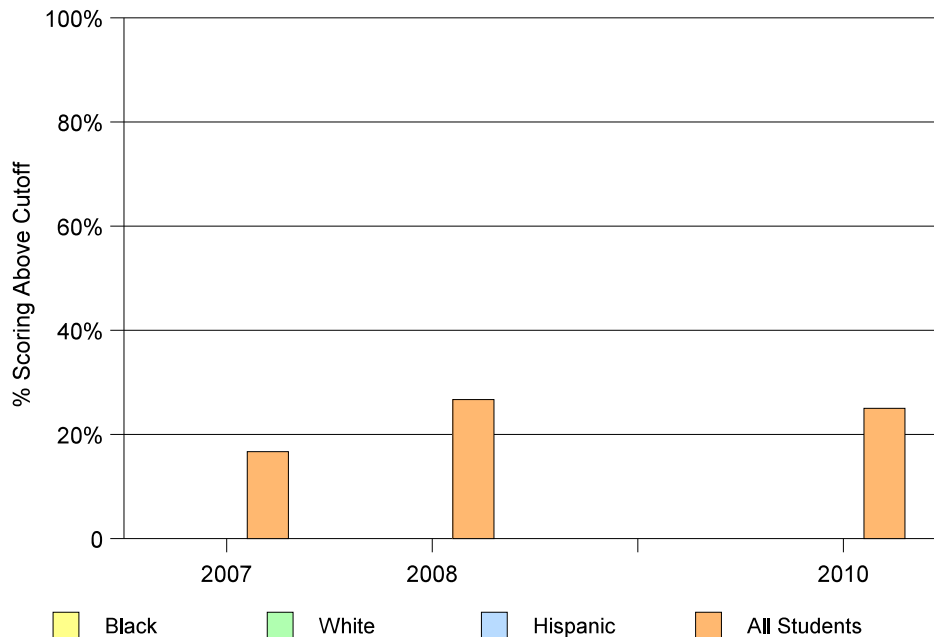


Readiness for College
Results from the Florida College Placement Test
2007 - 2010

Blank cells indicate missing data

		Math		Reading		Writing		All 3 Subjects	
		# Tested	% scoring above cutoff	# Tested	% scoring above cutoff	# Tested	% scoring above cutoff	# Tested	% scoring above cutoff
School for Applied Technology									
2010	Black								
	White								
	Hispanic								
	All Students	12	33.3%	12	58.3%	12	83.3%	12	25.0%
2009	Black								
	White								
	Hispanic								
	All Students								
2008	Black								
	White								
	Hispanic								
	All Students	15	40.0%	15	53.3%	15	60.0%	15	26.7%
2007	Black								
	White								
	Hispanic								
	All Students	12	33.3%	12	25.0%	12	58.3%	12	16.7%

Florida College Entry-Level Placement Test Results
Passed All Three Tests: 2007-2010

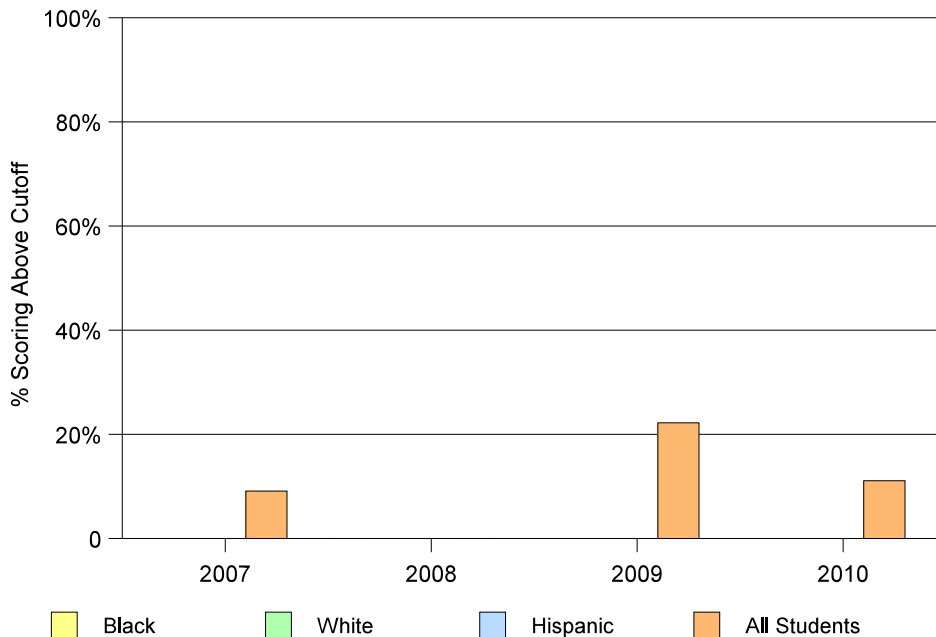


Readiness for College
Results from the Florida College Placement Test
2007 - 2010

Blank cells indicate missing data

		Math		Reading		Writing		All 3 Subjects	
		# Tested	% scoring above cutoff	# Tested	% scoring above cutoff	# Tested	% scoring above cutoff	# Tested	% scoring above cutoff
School for Integrated Academies and Technology									
2010	Black								
	White								
	Hispanic								
	All Students	18	16.7%	18	33.3%	18	22.2%	18	11.1%
2009	Black								
	White								
	Hispanic								
	All Students	18	22.2%	19	36.8%	19	36.8%	18	22.2%
2008	Black	12	0.0%	12	8.3%	12	25.0%	12	0.0%
	White								
	Hispanic								
	All Students	19	0.0%	19	15.8%	19	31.6%	19	0.0%
2007	Black								
	White								
	Hispanic								
	All Students	11	18.2%	11	36.4%	11	36.4%	11	9.1%

Florida College Entry-Level Placement Test Results
Passed All Three Tests: 2007-2010

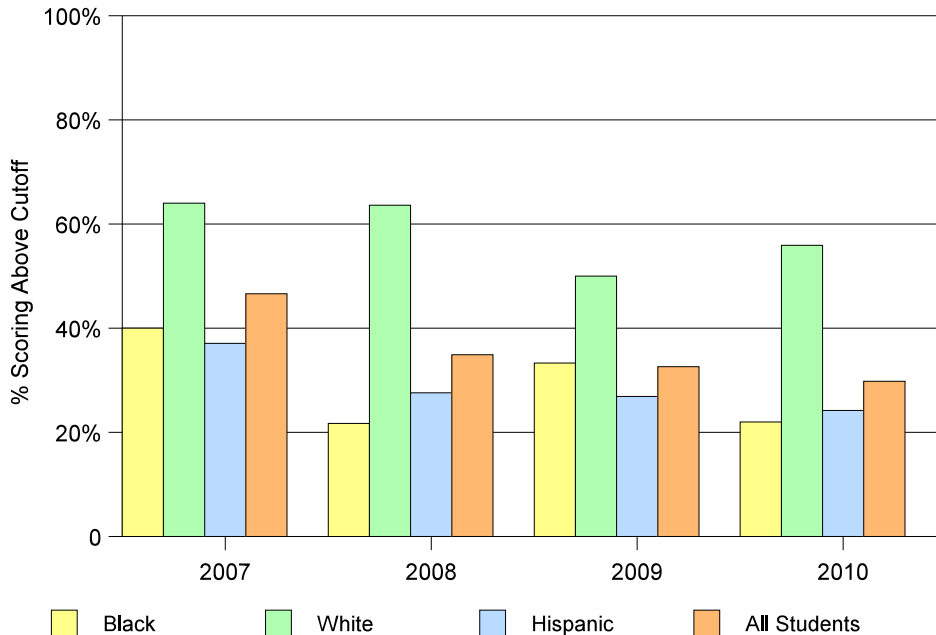


**Readiness for College
Results from the Florida College Placement Test
2007 - 2010**

Blank cells indicate missing data

		Math		Reading		Writing		All 3 Subjects	
		# Tested	% scoring above cutoff	# Tested	% scoring above cutoff	# Tested	% scoring above cutoff	# Tested	% scoring above cutoff
South Dade									
2010	Black	59	28.8%	59	47.4%	59	45.8%	59	22.0%
	White	35	54.3%	35	88.6%	34	91.2%	34	55.9%
	Hispanic	121	31.4%	121	55.4%	122	68.0%	120	24.2%
	All Students	220	35.9%	220	59.1%	220	66.4%	218	29.8%
2009	Black	33	33.3%	33	66.7%	33	63.6%	33	33.3%
	White	38	55.3%	38	76.3%	38	76.9%	38	50.0%
	Hispanic	108	30.6%	108	58.3%	108	66.7%	108	26.9%
	All Students	181	35.9%	181	64.1%	181	69.1%	181	32.6%
2008	Black	23	34.8%	23	47.8%	23	52.2%	23	21.7%
	White	33	66.7%	33	84.8%	33	87.9%	33	63.6%
	Hispanic	87	35.6%	87	57.5%	87	67.8%	87	27.6%
	All Students	149	42.3%	149	61.7%	149	69.8%	149	34.9%
2007	Black	10	60.0%	10	70.0%	10	60.0%	10	40.0%
	White	50	70.0%	50	80.0%	50	82.0%	50	64.0%
	Hispanic	89	47.2%	89	65.2%	89	71.9%	89	37.1%
	All Students	163	55.2%	163	70.6%	163	74.2%	163	46.6%

**Florida College Entry-Level Placement Test Results
Passed All Three Tests: 2007-2010**

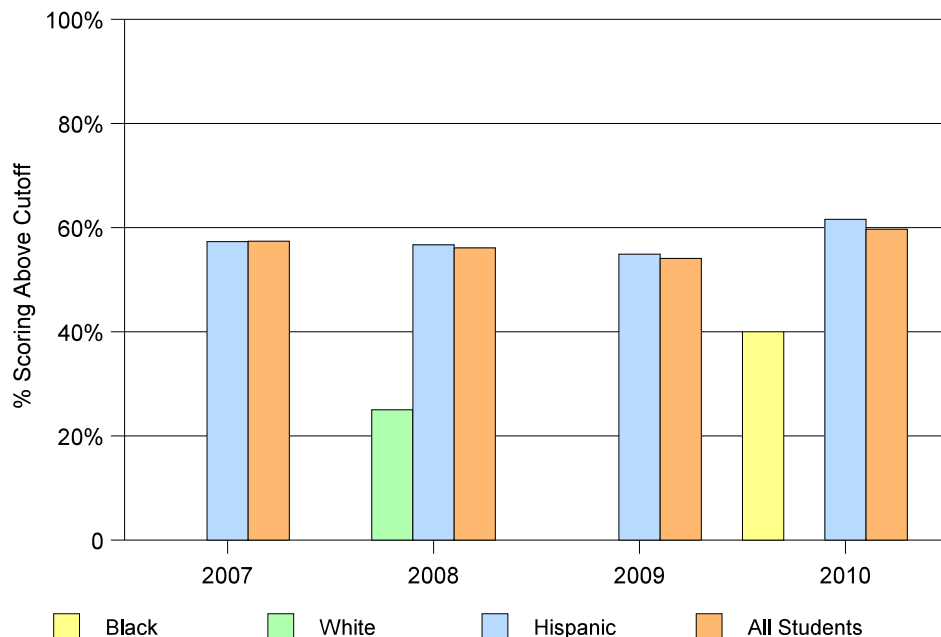


**Readiness for College
Results from the Florida College Placement Test
2007 - 2010**

Blank cells indicate missing data

		Math		Reading		Writing		All 3 Subjects	
		# Tested	% scoring above cutoff	# Tested	% scoring above cutoff	# Tested	% scoring above cutoff	# Tested	% scoring above cutoff
South Miami									
2010	Black								
	White								
	Hispanic	273	66.7%	273	80.2%	275	82.9%	263	61.6%
	All Students	302	65.2%	298	79.5%	292	85.3%	290	59.7%
2009	Black								
	White								
	Hispanic	270	65.9%	269	74.0%	264	82.2%	264	54.9%
	All Students	300	65.3%	299	74.6%	294	81.3%	294	54.1%
2008	Black								
	White	12	41.7%	12	75.0%	12	75.0%	12	25.0%
	Hispanic	261	67.8%	256	73.4%	254	81.1%	254	56.7%
	All Students	290	68.3%	289	73.0%	287	80.8%	287	56.1%
2007	Black								
	White								
	Hispanic	234	71.4%	234	71.8%	234	80.8%	234	57.3%
	All Students	256	72.7%	256	71.1%	256	80.5%	256	57.4%

**Florida College Entry-Level Placement Test Results
Passed All Three Tests: 2007-2010**

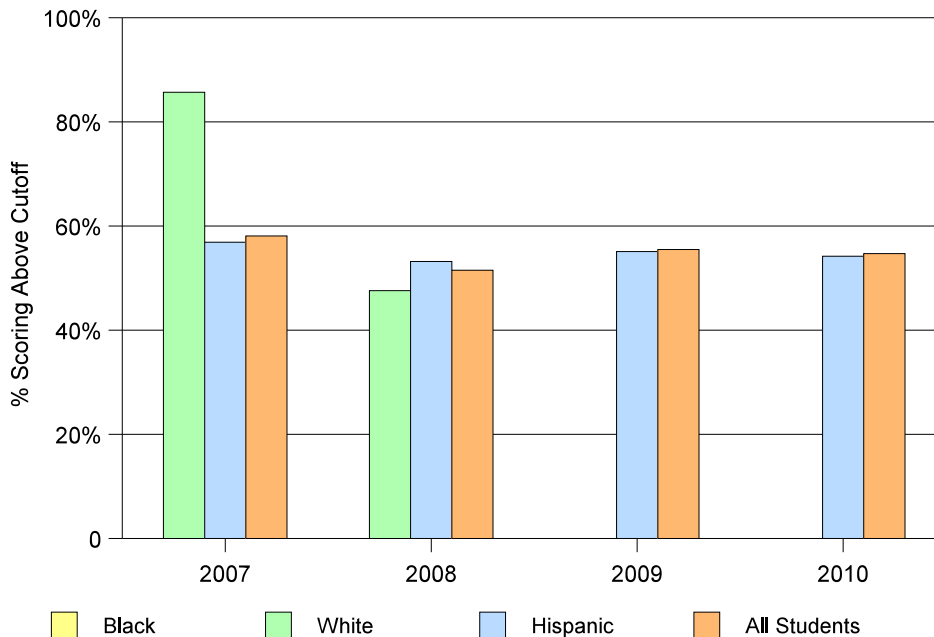


Readiness for College Results from the Florida College Placement Test 2007 - 2010

Blank cells indicate missing data

		Math		Reading		Writing		All 3 Subjects	
		# Tested	% scoring above cutoff	# Tested	% scoring above cutoff	# Tested	% scoring above cutoff	# Tested	% scoring above cutoff
Southwest Miami									
2010	Black								
	White								
	Hispanic	414	66.9%	414	73.7%	414	73.7%	411	54.2%
	All Students	438	66.9%	438	73.5%	438	74.0%	435	54.7%
2009	Black								
	White								
	Hispanic	383	64.0%	386	72.5%	386	76.9%	382	55.1%
	All Students	412	64.6%	415	72.8%	415	77.3%	411	55.5%
2008	Black								
	White	21	47.6%	21	71.4%	21	76.2%	21	47.6%
	Hispanic	386	64.0%	386	66.6%	388	74.0%	376	53.2%
	All Students	429	63.2%	429	67.4%	431	74.5%	429	51.5%
2007	Black								
	White	21	85.7%	21	95.2%	21	95.2%	21	85.7%
	Hispanic	311	67.8%	311	70.4%	311	81.0%	311	56.9%
	All Students	346	67.9%	346	71.4%	346	81.2%	346	58.1%

Florida College Entry-Level Placement Test Results
Passed All Three Tests: 2007-2010

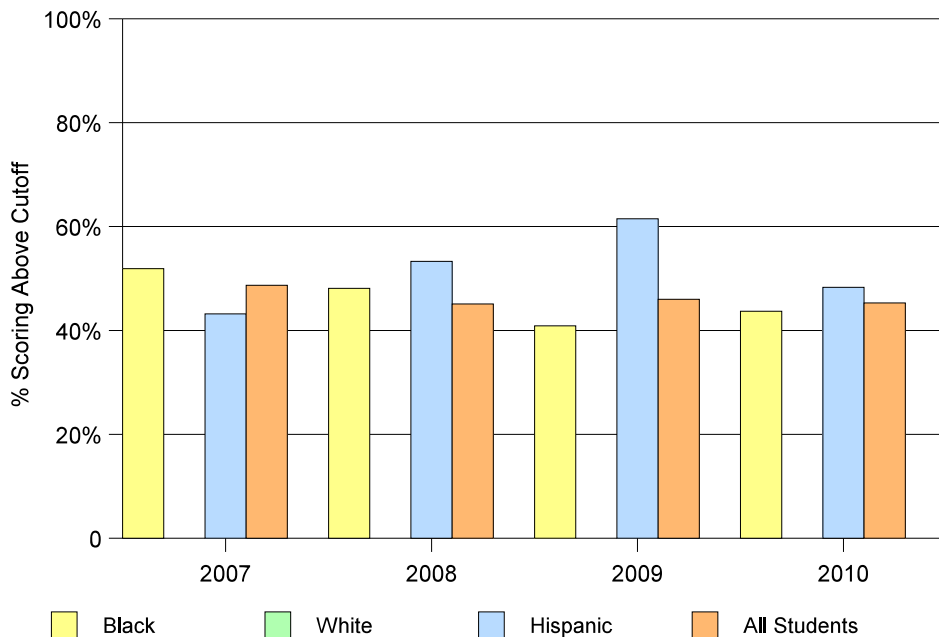


**Readiness for College
Results from the Florida College Placement Test
2007 - 2010**

Blank cells indicate missing data

		Math		Reading		Writing		All 3 Subjects	
		# Tested	% scoring above cutoff	# Tested	% scoring above cutoff	# Tested	% scoring above cutoff	# Tested	% scoring above cutoff
Wm. Turner Tech. Arts									
2010	Black	194	51.5%	193	68.9%	192	75.0%	192	43.7%
	White								
	Hispanic	60	55.0%	60	75.0%	60	81.7%	60	48.3%
	All Students	258	52.7%	257	70.8%	256	77.0%	256	45.3%
2009	Black	181	49.2%	181	65.7%	181	71.8%	181	40.9%
	White								
	Hispanic	52	63.5%	52	92.3%	52	94.2%	52	61.5%
	All Students	237	52.7%	237	71.7%	237	76.8%	237	46.0%
2008	Black	154	48.1%	154	74.0%	154	80.5%	154	48.1%
	White								
	Hispanic	75	58.7%	75	70.7%	75	85.3%	75	53.3%
	All Students	237	51.1%	237	72.2%	237	82.3%	237	45.1%
2007	Black	154	62.3%	154	76.0%	154	77.3%	154	51.9%
	White								
	Hispanic	74	56.8%	74	73.0%	74	81.1%	74	43.2%
	All Students	238	59.7%	238	74.8%	238	77.7%	238	48.7%

**Florida College Entry-Level Placement Test Results
Passed All Three Tests: 2007-2010**

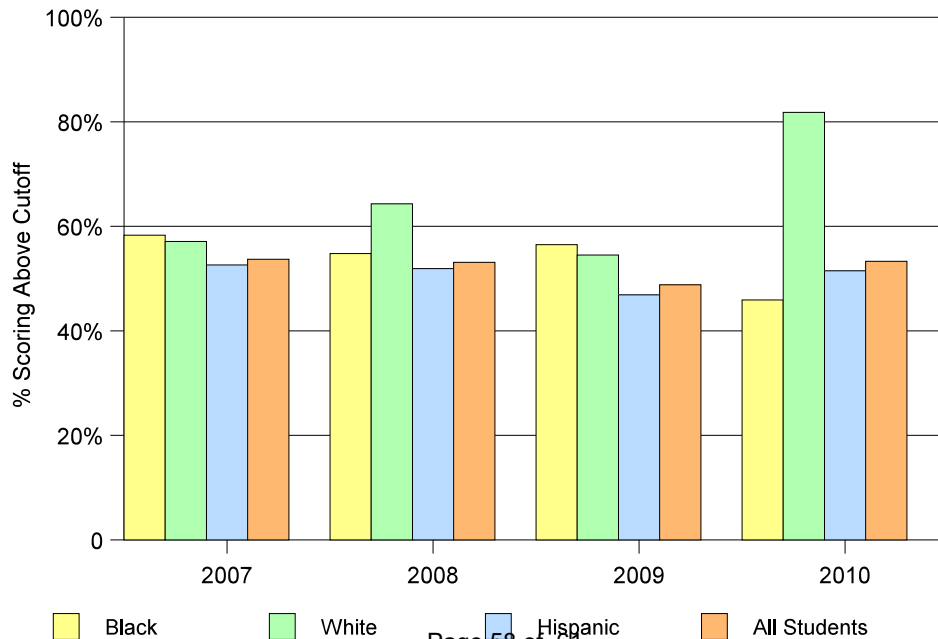


Readiness for College Results from the Florida College Placement Test 2007 - 2010

Blank cells indicate missing data

		Math		Reading		Writing		All 3 Subjects	
		# Tested	% scoring above cutoff	# Tested	% scoring above cutoff	# Tested	% scoring above cutoff	# Tested	% scoring above cutoff
Felix Varela									
2010	Black	37	51.3%	37	64.9%	37	83.8%	37	45.9%
	White	11	81.8%	11	100.0%	11	100.0%	11	81.8%
	Hispanic	387	58.4%	386	75.6%	387	83.2%	386	51.5%
	All Students	468	59.6%	467	76.0%	468	83.8%	467	53.3%
2009	Black	23	73.9%	23	78.3%	23	73.9%	23	56.5%
	White	33	57.6%	33	78.8%	33	81.8%	33	54.5%
	Hispanic	403	53.6%	402	73.6%	402	78.1%	401	46.9%
	All Students	473	55.0%	472	74.6%	472	78.6%	471	48.8%
2008	Black	31	64.5%	31	77.4%	31	87.1%	31	54.8%
	White	29	65.5%	28	85.7%	28	89.3%	28	64.3%
	Hispanic	393	58.3%	394	72.8%	394	81.0%	393	51.9%
	All Students	479	59.3%	479	73.7%	479	81.6%	478	53.1%
2007	Black	12	66.7%	12	66.7%	12	75.0%	12	58.3%
	White	42	59.5%	42	85.7%	42	83.3%	42	57.1%
	Hispanic	466	58.4%	467	72.8%	467	81.4%	466	52.6%
	All Students	555	59.3%	556	73.6%	556	81.5%	555	53.7%

**Florida College Entry-Level Placement Test Results
Passed All Three Tests: 2007-2010**

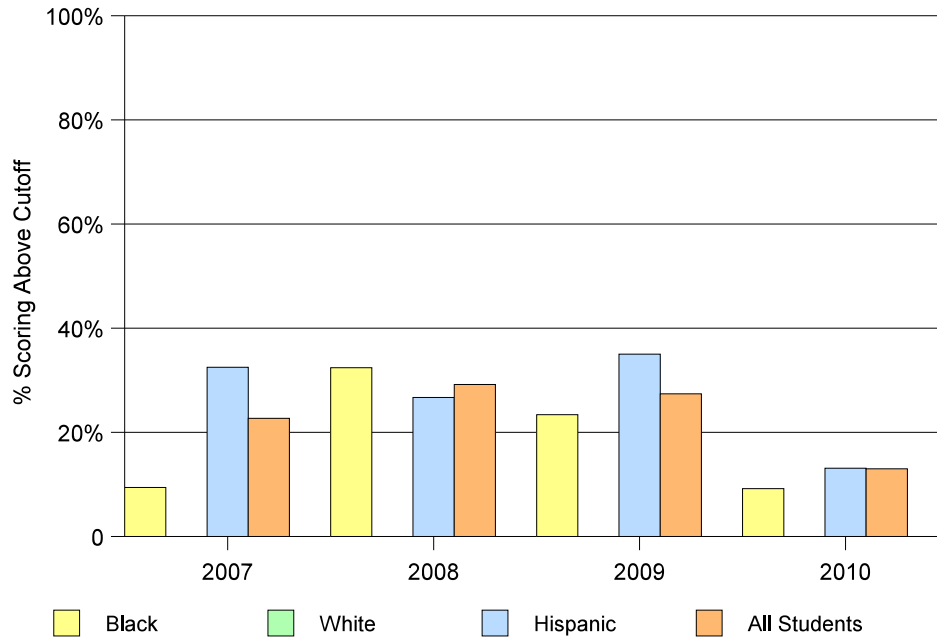


Readiness for College
Results from the Florida College Placement Test
2007 - 2010

Blank cells indicate missing data

		Math		Reading		Writing		All 3 Subjects	
		# Tested	% scoring above cutoff	# Tested	% scoring above cutoff	# Tested	% scoring above cutoff	# Tested	% scoring above cutoff
Booker T. Washington									
2010	Black	67	17.9%	65	32.3%	66	30.3%	65	9.2%
	White								
	Hispanic	38	18.4%	39	41.0%	39	56.4%	38	13.1%
	All Students	110	20.9%	109	37.6%	110	40.9%	108	13.0%
2009	Black	64	31.3%	64	48.4%	64	46.9%	64	23.4%
	White								
	Hispanic	40	37.5%	40	50.0%	40	62.5%	40	35.0%
	All Students	106	33.0%	106	50.0%	106	52.8%	106	27.4%
2008	Black	34	47.1%	34	58.8%	34	61.8%	34	32.4%
	White								
	Hispanic	30	40.0%	30	43.3%	30	63.3%	30	26.7%
	All Students	65	43.1%	65	50.8%	65	61.5%	65	29.2%
2007	Black	32	12.5%	32	31.3%	21	37.5%	32	9.4%
	White								
	Hispanic	40	40.0%	40	55.0%	40	57.5%	40	32.5%
	All Students	75	29.3%	75	45.3%	75	48.0%	75	22.7%

Florida College Entry-Level Placement Test Results
Passed All Three Tests: 2007-2010

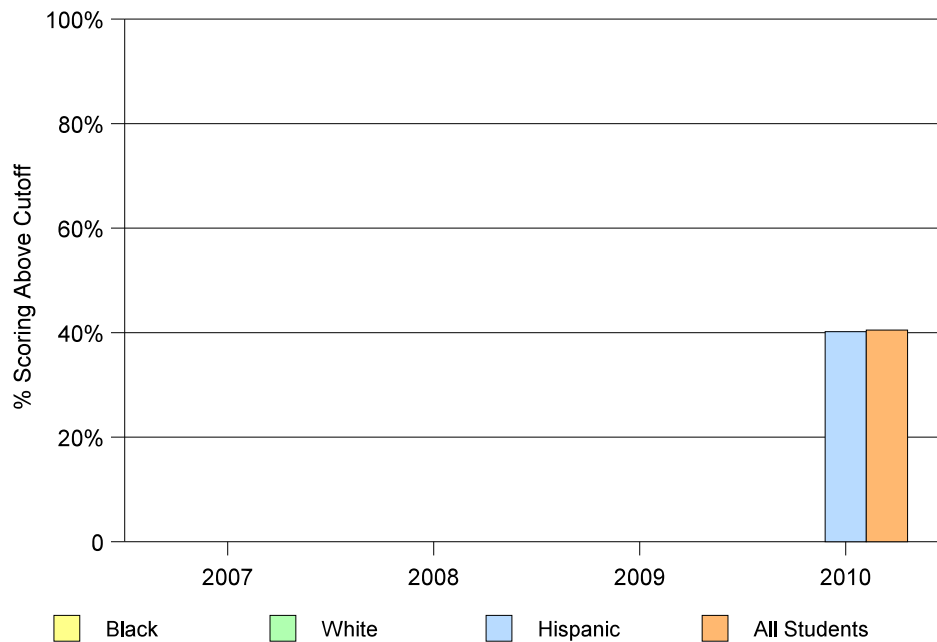


Readiness for College
Results from the Florida College Placement Test
2007 - 2010

Blank cells indicate missing data

		Math		Reading		Writing		All 3 Subjects	
		# Tested	% scoring above cutoff	# Tested	% scoring above cutoff	# Tested	% scoring above cutoff	# Tested	% scoring above cutoff
Westland Hialeah									
2010	Black								
	White								
	Hispanic	110	49.1%	110	70.0%	107	69.1%	107	40.2%
	All Students	119	48.7%	119	70.6%	116	69.8%	116	40.5%
2009	Black								
	White								
	Hispanic								
	All Students								
2008	Black								
	White								
	Hispanic								
	All Students								
2007	Black								
	White								
	Hispanic								
	All Students								

Florida College Entry-Level Placement Test Results
Passed All Three Tests: 2007-2010



Readiness for College
Results from the Florida College Placement Test
2007 - 2010

Blank cells indicate missing data

		Math		Reading		Writing		All 3 Subjects	
		# Tested	% scoring above cutoff	# Tested	% scoring above cutoff	# Tested	% scoring above cutoff	# Tested	% scoring above cutoff
Young Women's Preparatory Academy									
2010	Black								
	White								
	Hispanic								
	All Students	10	90.0%	10	90.0%	10	90.0%	10	90.0%
2009	Black								
	White								
	Hispanic								
	All Students								
2008	Black								
	White								
	Hispanic								
	All Students								
2007	Black								
	White								
	Hispanic								
	All Students								

Florida College Entry-Level Placement Test Results
Passed All Three Tests: 2007-2010

