

College Readiness:
A Compendium of M-DCPS Results
From the
Florida College Placement Test
2006 to 2009

Principal Authors: Mr. Dale Romanik
 Ms. Mary Rembowski

Research Services
Assessment, Research, and Data Analysis
Miami-Dade County Public Schools
1500 Biscayne Boulevard, Suite225
Miami, Florida 33132
January 2011

**The School Board
of Miami-Dade County, Florida**

Ms. Perla Tabares Hantman, Chair
Dr. Lawrence S. Feldman, Vice Chair
Dr. Dorothy Bendross-Mindingall
Mr. Carlos L. Curbelo
Dr. Renier Diaz de la Portilla
Dr. Wilbert "Tee" Holloway
Dr. Martin Karp
Dr. Marta Pérez
Ms. Raquel A. Regalado

Mr. Albert M. Carvalho
Superintendent of Schools

Ms. Debbie Karcher
Information Technology Services

Ms. Gisela Feild, Administrative Director
Assessment, Research, and Data Analysis

Mr. Dale Romanik, Director
Research Services

Table of Contents

Introduction.....	1
Miami-Dade County (Districtwide) Results.....	5
State of Florida Results.	6
Readiness for College: Individual High School Results	
Academy for Community Education.	7
Academy of Arts and Minds.....	8
American Senior High.	9
George T. Baker Aviation.	10
G. Holmes Braddock Senior High.	11
Coral Gables Senior High.	12
Coral Reef Senior High.	13
Design & Architecture Senior High.	14
Doctor’s Charter of Miami.	15
Doral Academy Charter.....	16
John A. Ferguson Senior High.	17
Barbara Goleman Senior High.	18
Hialeah Senior High.....	19
Hialeah-Miami Lakes Senior High.....	20
Homestead Senior High.	21
International Studies Charter.....	22
Dr. Michael M. Krop Senior High.....	23
Maritime and Science Technology Academy.	24
Mater Academy Senior High Charter.....	25
Miami Beach Senior High.	26
Miami Carol City Senior High.	27
Miami Central Senior High.	28
Miami Coral Park Senior High.....	29
Miami Edison Senior High.....	30
Miami Jackson Senior High.....	31
Miami Killian Senior High.	32
Miami Lakes Educational Center.....	33
Miami Norland Senior High.	34
Miami Northwestern Senior High.....	35
Miami Palmetto Senior High.	36
Miami Senior High.....	37
Miami Southridge Senior High.....	38
Miami Springs Senior High.	39
Miami Sunset Senior High.....	40
Robert Morgan Vocational Tech.	41
New World School of the Arts.	42
North Miami Senior High.	43
North Miami Beach Senior High.	44
Ronald W. Reagan / Doral Senior High.....	45
School for Advanced Studies, Homestead.	46
School for Advanced Studies, North.....	47
School for Advanced Studies, South.....	48

School for Advanced Studies, Wolfson.....	49
School for Applied Technology.	50
School for Integrated Academies and Technology.	51
South Dade Senior High.	52
South Miami Senior High..	53
Southwest Miami Senior High.	54
William Turner Technical Arts High.....	55
Felix Varela Senior High.	56
Booker T. Washington Senior High.....	57

Section 1008.30 (formerly 240.117), Florida Statutes, requires the State Board of Education to develop and implement a common placement testing program to assess the basic computation and communication skills of students who intend to enter a degree program at any public community college or state university.

Every year the State provides reports to districts and high schools on their graduates' performance on these entry-level placement tests administered at Florida public community colleges and state universities. All entering freshmen must demonstrate certain basic skills before beginning college-level courses. Students who meet minimum standards on the elementary Algebra, Reading Comprehension, and Sentence Skills portions of the Florida College Entry-Level Placement Test (CPT) are considered 'ready' for college-level math, reading, and writing, respectively. Students may be exempted from these tests if they score high enough on the SAT or ACT. Students who test below the cutoff score for an area are required to enroll in remedial coursework.

The students represented in this report are not a random sample of all Florida high school graduates nor a random sample of all M-DCPS graduates. This report focuses on the test results for students who:

- graduated during the 2005-06, 2006-07, 2007-08, and 2008-09 school year with a standard diploma and
- entered a Florida public university or community college as degree-seeking students

These students represent roughly half of the 2006-09 graduates in Florida and a little more than half of the M-DCPS graduates. The report does not include: graduates who do not go to college, graduates who attend private or out-of-state colleges, transfer students, casual or non-degree-seeking students, students who take time off between high school and college, GED or non-standard diploma recipients or private high school graduates.

The compendium is organized by M-DCPS senior high schools and includes the number of students tested as well as the percent of students scoring above the established criteria or cutoff established by Section 1008.30, Florida Statutes. These data are provided for four groups of students including: 1) Black, non-Hispanic; 2) White, non-Hispanic; 3) Hispanic; and 4) all students combined including students of other racial/ethnic groups. District and State figures are included on the first two pages of the compendium.

Please note beginning with the CPT results for 2004 graduates, the students' best test scores rather than the first test scores have been provided by the state. This revision should be considered when comparing year to year performance. The state maintains this change provides a more accurate representation of college readiness since it is this score that is used when making academic decisions about students.

Figure 1, indicates that the college readiness of M-DCPS graduates has been quite stable over the past four years as covered in this report. A slightly larger percentage of students (51.1%) graduating in 2009 and included in the state database, passed all three subject areas when compared to 2008 graduates (50.9%). This increase was due in part to improved performance by Hispanic students. Approximately 53.0% of Hispanic Students passed all three subtests in 2009 compared to 51.9% in 2008. In addition, a larger percentage of Hispanic students passed Reading in 2009 (74.5%) compared to 2008 (72.0%) (Figure 3). However, the proportion of M-DCPS students passing all three subject areas in 2009 (51.1%) fell below that of all students tested statewide (62.1%).

The present compendium has been completed to assist M-DCPS high schools in preparation of students for college. These results can be used by high schools to determine the extent to which graduates are prepared for college-level courses.

A series of four graphs follow and have been provided in this year's report to further illustrate trends concerning the college readiness of M-DCPS graduates.

Please note that blank cells in the subsequent tables indicate either missing data from the state's CPT website or there were no students tested in certain ethnic/racial categories for the given year. For additional information, the interested reader is referred to the Florida Department of Education website at <http://www.fldoe.org/articulation/perfCPT/default.asp>.

All reports distributed by Research Services can be accessed at <http://drs.dadeschools.net>.

Figure 1

Trend of Students Prepared for College-Level Courses Based on CPT Scores Indicative of College Readiness in All Three Academic Areas

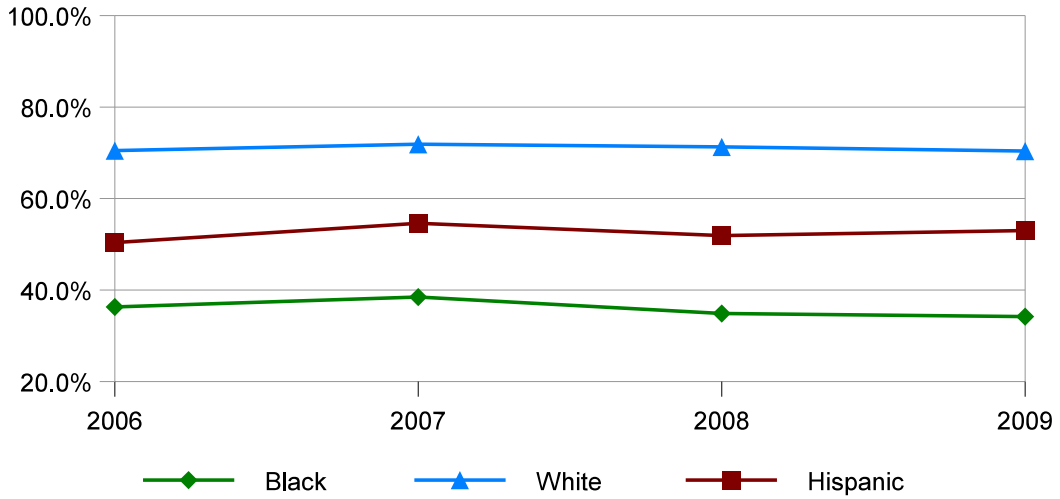


Figure 2

Trend of Students Prepared for College-Level Courses Based on CPT Math Scores

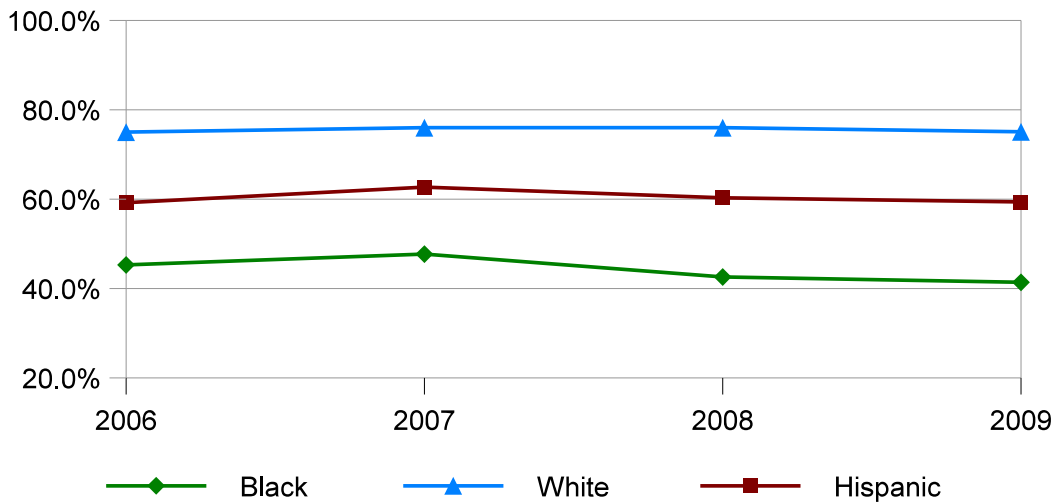


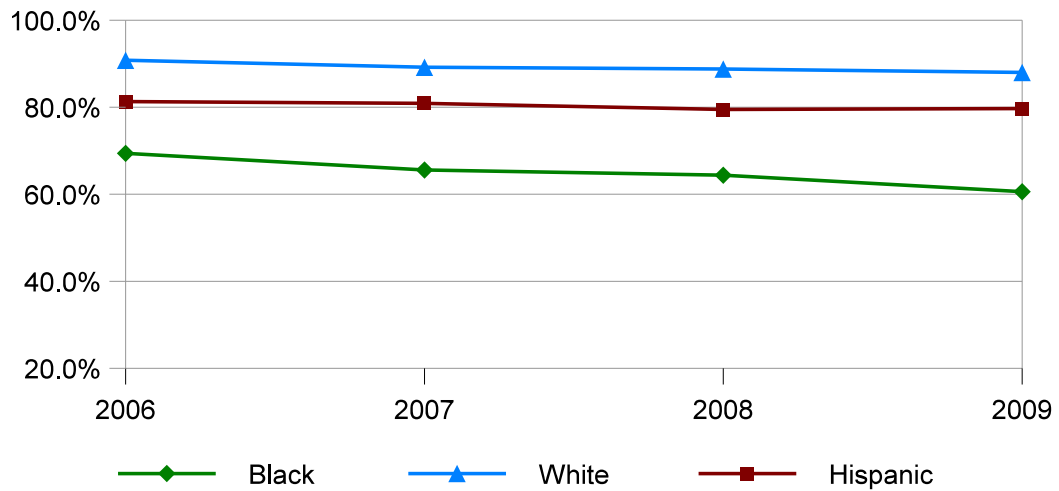
Figure 3

**Trend of Students Prepared for College-Level Courses
Based on CPT Reading Scores**



Figure 4

**Trend of Students Prepared for College-Level Courses
Based on CPT Writing Scores**

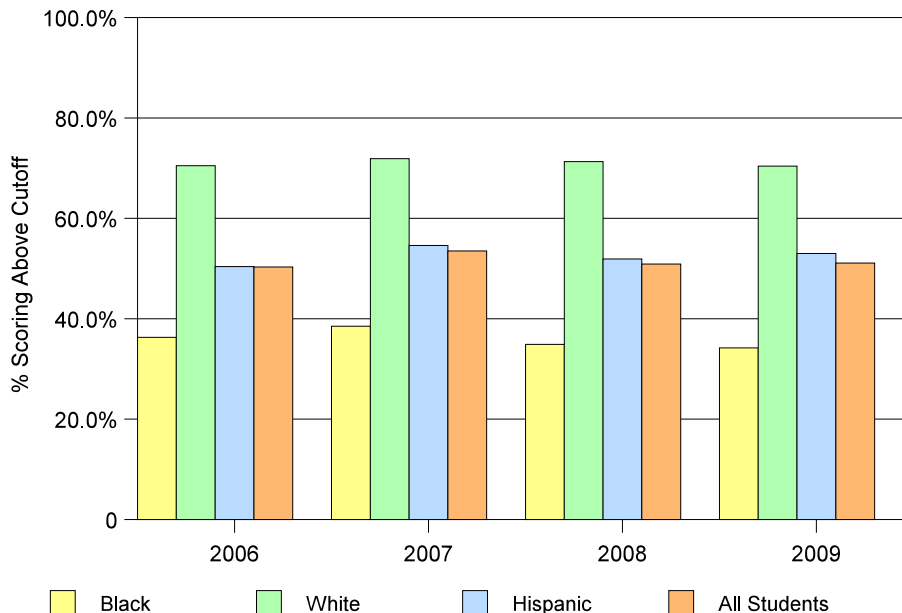


Readiness for College Results from the Florida College Placement Test 2006 - 2009

Blank cells indicate missing data

		Math		Reading		Writing		All 3 Subjects	
		# Tested	% scoring above cutoff	# Tested	% scoring above cutoff	# Tested	% scoring above cutoff	# Tested	% scoring above cutoff
Miami-Dade County									
2009	Black	2,287	41.4%	2,293	57.6%	2,291	60.6%	2,282	34.2%
	White	864	75.1%	865	85.7%	865	88.0%	864	70.4%
	Hispanic	7,974	59.4%	7,982	74.5%	7,961	79.7%	7,946	53.0%
	All Students	11,427	57.5%	11,442	72.1%	11,419	76.6%	11,394	51.1%
2008	Black	2,092	42.6%	2,089	59.2%	2,087	64.4%	2,087	34.9%
	White	1,011	76.0%	1,010	85.5%	1,010	88.8%	1,009	71.3%
	Hispanic	7,681	60.3%	7,685	72.0%	7,675	79.5%	7,664	51.9%
	All Students	11,218	58.8%	11,218	71.1%	11,205	77.7%	11,192	50.9%
2007	Black	2,088	47.7%	2,091	60.3%	2,091	65.6%	2,087	38.5%
	White	1,076	76.0%	1,077	84.7%	1,077	89.2%	1,076	71.9%
	Hispanic	7,261	62.7%	7,264	73.2%	7,264	80.9%	7,256	54.6%
	All Students	10,879	61.4%	10,886	72.0%	10,886	78.8%	10,873	53.5%
2006	Black	1,910	45.3%	1,913	59.9%	1,913	69.4%	1,908	36.3%
	White	1,012	75.0%	1,013	85.2%	1,013	90.8%	1,011	70.5%
	Hispanic	6,529	59.2%	6,535	69.1%	6,535	81.3%	6,516	50.4%
	All Students	9,849	58.6%	9,856	69.3%	9,856	80.1%	9,830	50.3%

**Florida College Entry-Level Placement Test Results
Passed All Three Tests: 2006-2009**



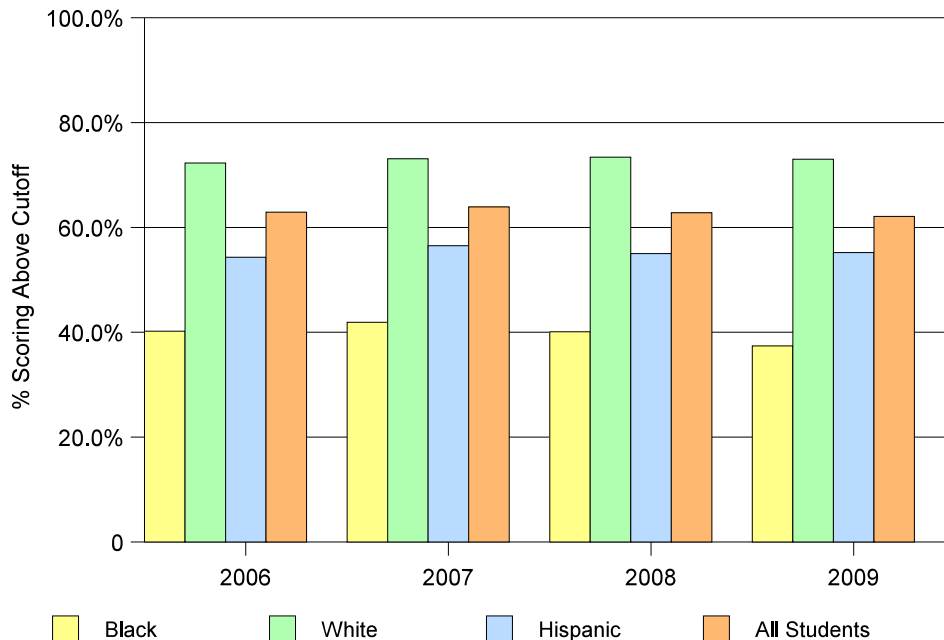
Readiness for College Results from the Florida College Placement Test 2006 - 2009

Blank cells indicate missing data

		Math		Reading		Writing		All 3 Subjects	
		# Tested	% scoring above cutoff	# Tested	% scoring above cutoff	# Tested	% scoring above cutoff	# Tested	% scoring above cutoff
State of Florida									
2009	Black	15,946	46.2%	16,132	58.8%	16,035	61.4%	15,803	37.4%
	White	42,051	78.3%	42,458	87.4%	42,037	88.2%	41,523	73.0%
	Hispanic	20,340	62.4%	20,495	74.3%	20,412	78.1%	20,215	55.2%
	All Students	82,756	68.4%	83,527	78.5%	82,902	80.4%	81,932	62.1%
2008	Black	13,849	49.2%	13,927	61.6%	13,901	65.4%	13,768	40.1%
	White	41,740	78.5%	41,948	86.7%	41,820	88.4%	41,507	73.4%
	Hispanic	18,583	63.1%	18,640	73.1%	18,599	78.5%	18,494	55.0%
	All Students	79,534	69.7%	79,878	78.6%	79,675	81.6%	79,102	62.8%
2007	Black	12,703	51.8%	12,818	62.1%	12,818	66.7%	12,695	41.9%
	White	41,931	78.1%	42,655	85.8%	42,355	88.0%	41,885	73.1%
	Hispanic	17,076	65.2%	17,158	73.3%	17,158	79.2%	17,047	56.5%
	All Students	77,529	70.8%	78,197	78.7%	78,197	82.2%	77,446	63.9%
2006	Black	11,562	49.9%	11,567	60.2%	11,657	69.7%	11,548	40.2%
	White	39,919	77.5%	40,289	84.8%	40,289	89.1%	39,869	72.3%
	Hispanic	15,033	63.2%	15,115	71.0%	15,115	80.3%	15,000	54.3%
	All Students	71,631	70.0%	72,215	77.5%	72,215	83.8%	71,523	62.9%

Florida College Entry-Level Placement Test Results

Passed All Three Tests: 2006-2009



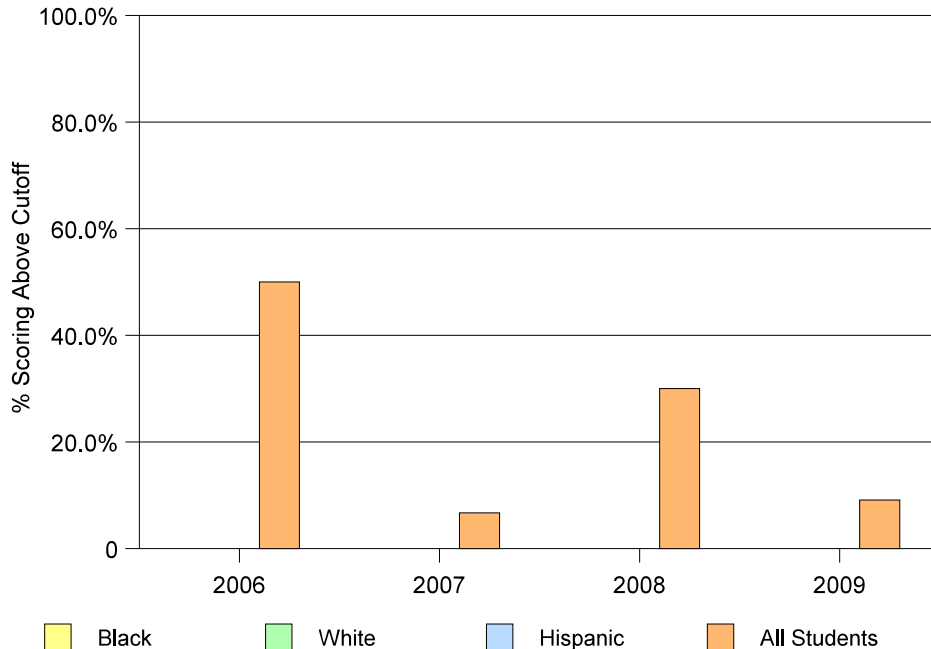
Readiness for College
Results from the Florida College Placement Test
2006 - 2009
Individual School Results

Readiness for College Results from the Florida College Placement Test 2006 - 2009

Blank cells indicate missing data

		Math		Reading		Writing		All 3 Subjects	
		# Tested	% scoring above cutoff	# Tested	% scoring above cutoff	# Tested	% scoring above cutoff	# Tested	% scoring above cutoff
Academy for Community Education									
2009	Black								
	White								
	Hispanic								
	All Students	11	27.3%	11	54.5%	11	63.6%	11	9.1%
2008	Black								
	White								
	Hispanic								
	All Students	10	30.0%	10	40.0%	10	50.0%	10	30.0%
2007	Black								
	White								
	Hispanic								
	All Students	15	26.7%	15	33.3%	15	53.3%	15	6.7%
2006	Black								
	White								
	Hispanic								
	All Students	12	50.0%	12	75.0%	12	58.3%	12	50.0%

Florida College Entry-Level Placement Test Results Passed All Three Tests: 2006-2009

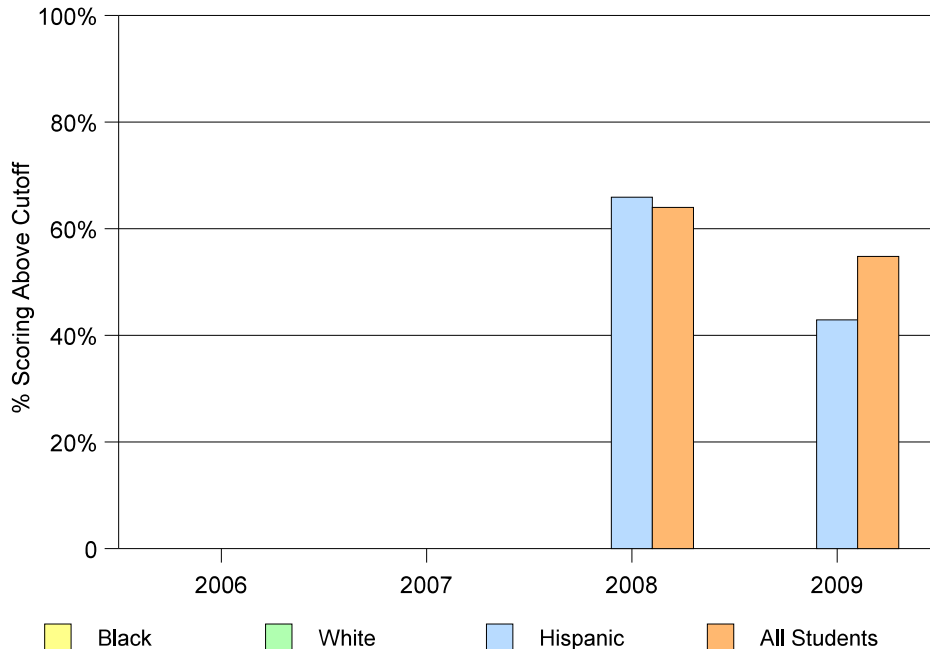


Readiness for College Results from the Florida College Placement Test 2006 - 2009

Blank cells indicate missing data

		Math		Reading		Writing		All 3 Subjects	
		# Tested	% scoring above cutoff	# Tested	% scoring above cutoff	# Tested	% scoring above cutoff	# Tested	% scoring above cutoff
Academy of Arts and Minds									
2009	Black								
	White								
	Hispanic	21	42.9%	21	90.5%	21	90.5%	21	42.9%
	All Students	42	57.1%	42	85.7%	42	90.5%	42	54.8%
2008	Black								
	White								
	Hispanic	41	75.6%	41	85.4%	41	95.1%	41	65.9%
2007	All Students	50	72.0%	50	84.0%	50	94.0%	50	64.0%
	Black								
	White								
2006	Hispanic								
	All Students								
	Black								
	White								

Florida College Entry-Level Placement Test Results Passed All Three Tests: 2006-2009

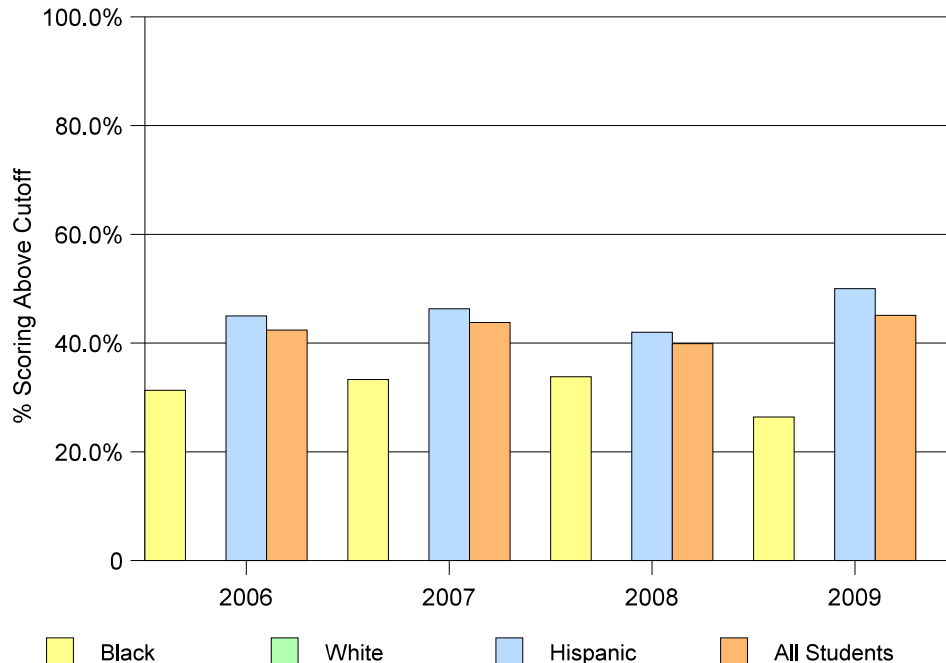


Readiness for College Results from the Florida College Placement Test 2006 - 2009

Blank cells indicate missing data

			Math		Reading		Writing		All 3 Subjects	
			# Tested	% scoring above cutoff	# Tested	% scoring above cutoff	# Tested	% scoring above cutoff	# Tested	% scoring above cutoff
American										
2009	Black		53	32.1%	53	32.1%	53	34.0%	53	26.4%
	White									
	Hispanic		166	53.6%	166	68.1%	166	71.7%	166	50.0%
	All Students		233	49.4%	233	64.8%	233	68.2%	233	45.1%
2008	Black		65	40.0%	65	50.8%	65	56.9%	65	33.8%
	White									
	Hispanic		181	48.1%	181	66.9%	181	68.5%	181	42.0%
	All Students		263	46.4%	263	63.9%	263	65.0%	263	39.9%
2007	Black		63	41.3%	64	54.7%	64	64.1%	63	33.3%
	White									
	Hispanic		175	53.7%	175	68.0%	175	73.1%	175	46.3%
	All Students		251	51.8%	252	64.7%	252	71.8%	251	43.8%
2006	Black		48	33.3%	48	62.5%	8	72.9%	48	31.3%
	White									
	Hispanic		120	55.0%	120	65.0%	120	75.8%	120	45.0%
	All Students		184	50.0%	184	64.1%	184	75.5%	184	42.4%

**Florida College Entry-Level Placement Test Results
Passed All Three Tests: 2006 - 2009**

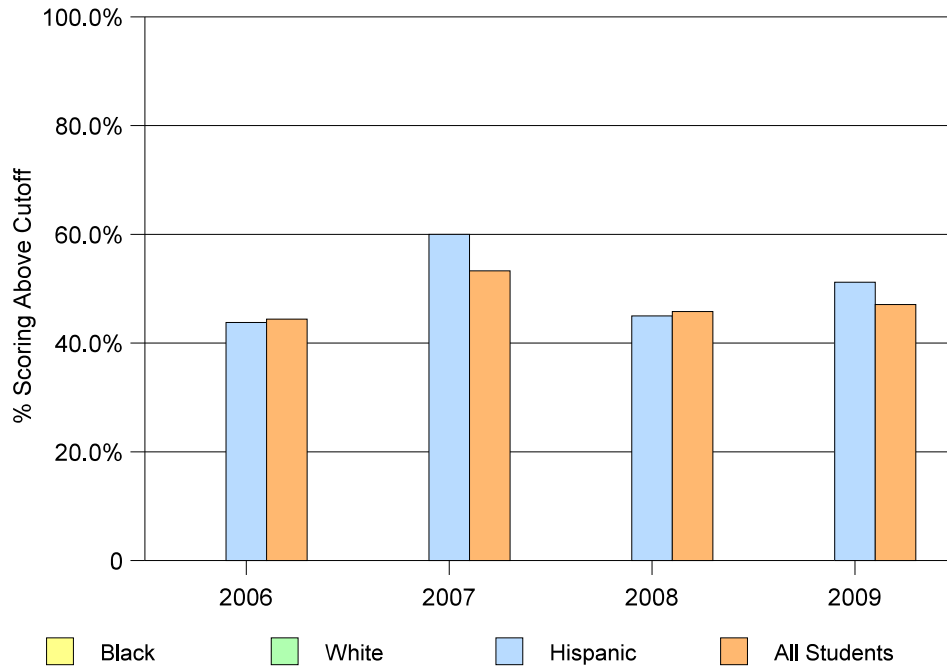


Readiness for College
Results from the Florida College Placement Test
2006 - 2009

Blank cells indicate missing data

		Math		Reading		Writing		All 3 Subjects	
		# Tested	% scoring above cutoff	# Tested	% scoring above cutoff	# Tested	% scoring above cutoff	# Tested	% scoring above cutoff
George T. Baker Aviation									
2009	Black								
	White								
	Hispanic	12	58.3%	12	75.0%	12	83.3%	12	50.0%
	All Students	17	52.9%	17	70.6%	17	88.2%	17	47.1%
2008	Black								
	White								
	All Students	20	65.0%	20	65.0%	20	75.0%	20	45.0%
2007	Black								
	White								
	All Students	24	62.5%	54	70.8%	24	79.2%	24	45.8%
2006	Black								
	White								
	All Students	16	50.0%	17	64.7%	17	94.1%	16	43.8%

Florida College Entry-Level Placement Test Results
Passed All Three Tests: 2006 - 2009



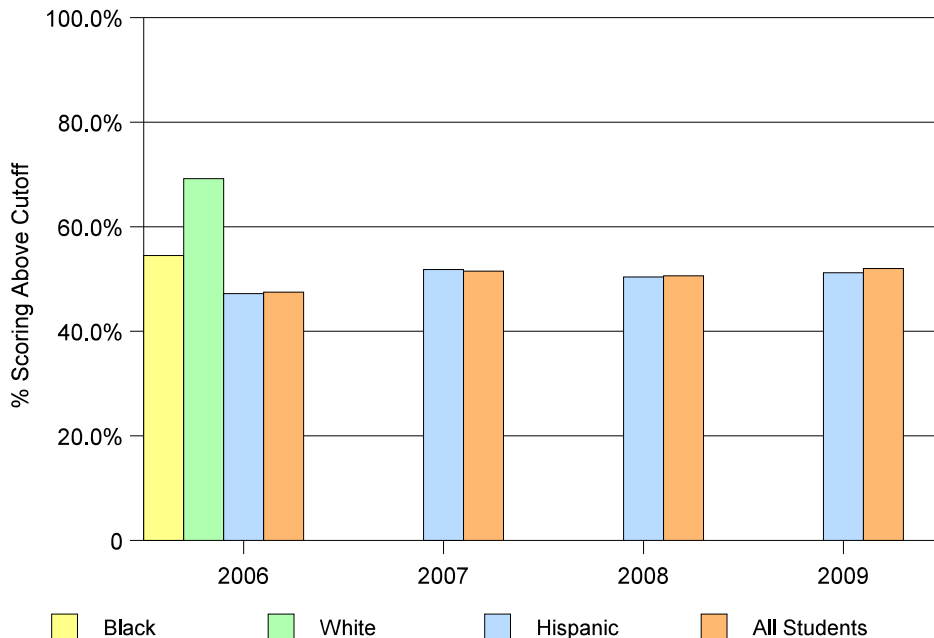
Readiness for College Results from the Florida College Placement Test 2006 - 2009

Blank cells indicate missing data

		Math		Reading		Writing		All 3 Subjects	
		# Tested	% scoring above cutoff	# Tested	% scoring above cutoff	# Tested	% scoring above cutoff	# Tested	% scoring above cutoff
G. Holmes Braddock									
2009	Black								
	White								
	Hispanic	463	57.7%	462	74.7%	461	78.7%	460	51.2%
	All Students	482	58.1%	481	74.4%	480	78.8%	479	52.0%
2008	Black								
	White								
	All Students	490	62.0%	493	68.6%	492	80.1%	490	50.4%
2007	Black								
	White								
	All Students	539	62.7%	539	70.3%	539	79.4%	539	51.8%
2006	Black	11	54.5%	11	72.7%	11	81.8%	11	54.5%
	White	13	69.2%	13	92.3%	13	92.3%	13	69.2%
	Hispanic	554	58.7%	554	67.0%	554	80.5%	551	47.2%
	All Students	601	58.7%	601	67.6%	601	81.0%	598	47.5%

Florida College Entry-Level Placement Test Results

Passed All Three Tests: 2006-2009



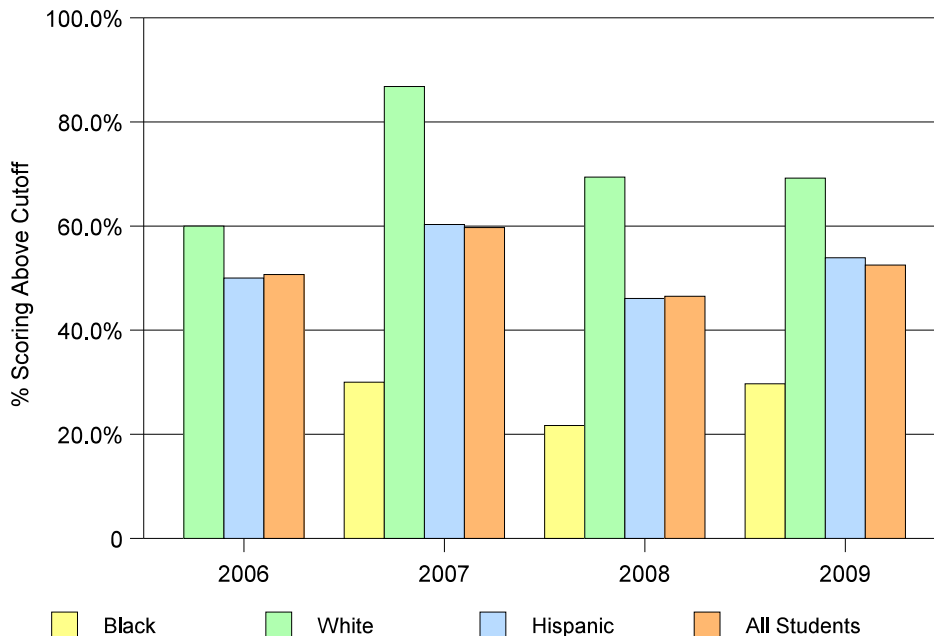
Readiness for College Results from the Florida College Placement Test 2006 - 2009

Blank cells indicate missing data

		Math		Reading		Writing		All 3 Subjects	
		# Tested	% scoring above cutoff	# Tested	% scoring above cutoff	# Tested	% scoring above cutoff	# Tested	% scoring above cutoff
Coral Gables									
2009	Black	37	32.4%	37	54.1%	37	56.8%	37	29.7%
	White	13	69.2%	13	92.3%	13	76.9%	13	69.2%
	Hispanic	390	59.7%	392	73.0%	389	79.2%	388	53.9%
	All Students	450	58.2%	452	72.1%	449	77.3%	448	52.5%
2008	Black	23	26.1%	23	39.1%	23	39.1%	23	21.7%
	White	36	75.0%	36	77.8%	36	88.9%	36	69.4%
	Hispanic	337	55.5%	336	69.0%	335	77.9%	334	46.1%
	All Students	418	55.0%	417	67.1%	416	75.5%	415	46.5%
2007	Black	10	30.0%	10	60.0%	10	50.0%	10	30.0%
	White	38	92.1%	38	86.8%	38	89.5%	38	86.8%
	Hispanic	356	69.9%	356	73.9%	356	81.7%	355	60.3%
	All Students	433	68.6%	433	73.7%	433	79.9%	432	59.7%
2006	Black								
	White	25	64.0%	25	84.0%	25	96.0%	25	60.0%
	Hispanic	294	59.5%	296	68.2%	296	79.7%	294	50.0%
	All Students	347	59.9%	349	70.8%	349	80.5%	347	50.7%

Florida College Entry-Level Placement Test Results

Passed All Three Tests: 2006-2009



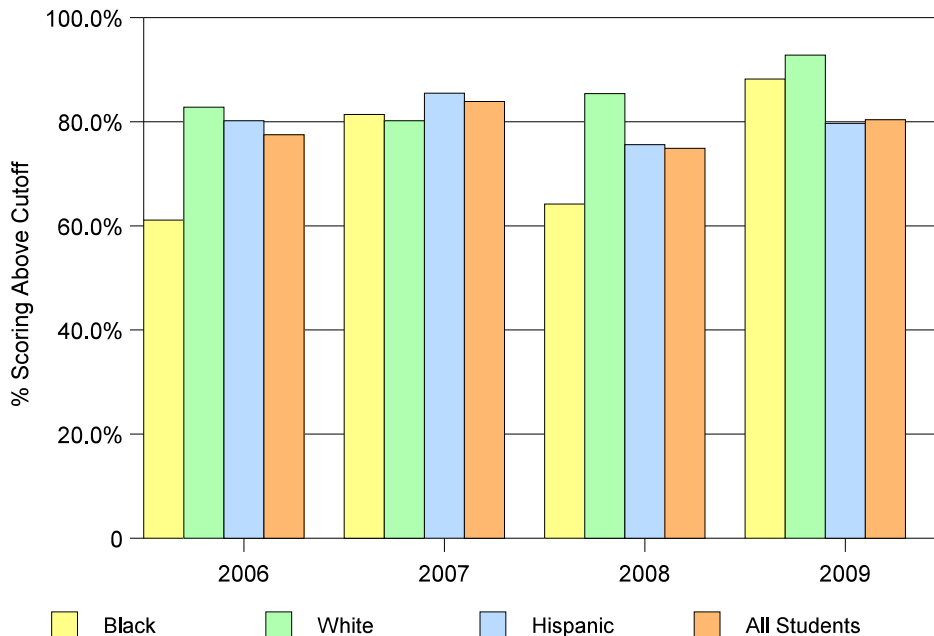
Readiness for College Results from the Florida College Placement Test 2006 - 2009

Blank cells indicate missing data

		Math		Reading		Writing		All 3 Subjects	
		# Tested	% scoring above cutoff	# Tested	% scoring above cutoff	# Tested	% scoring above cutoff	# Tested	% scoring above cutoff
Coral Reef									
2009	Black	96	76.0%	96	80.2%	96	85.4%	96	69.8%
	White	83	95.2%	83	98.8%	83	96.4%	83	92.8%
	Hispanic	307	82.7%	307	93.2%	306	95.8%	306	79.7%
	All Students	515	84.1%	515	91.8%	514	93.6%	514	80.4%
2008	Black	109	69.7%	109	85.3%	109	88.1%	109	64.2%
	White	82	91.5%	82	92.7%	82	97.6%	82	85.4%
	Hispanic	242	80.6%	242	89.3%	242	93.8%	242	75.6%
	All Students	463	80.3%	463	88.8%	463	93.1%	463	74.9%
2007	Black	102	85.3%	102	91.2%	102	91.2%	102	81.4%
	White	101	84.2%	101	92.1%	101	98.0%	101	80.2%
	Hispanic	248	88.3%	248	95.6%	248	97.2%	248	85.5%
	All Students	483	87.6%	483	93.8%	483	96.1%	483	83.9%
2006	Black	90	65.6%	90	85.6%	90	92.2%	90	61.1%
	White	87	86.2%	87	94.3%	87	98.9%	87	82.8%
	Hispanic	258	81.8%	258	90.7%	258	94.6%	258	80.2%
	All Students	472	80.1%	472	90.9%	472	95.1%	472	77.5%

Florida College Entry-Level Placement Test Results

Passed All Three Tests: 2006-2009



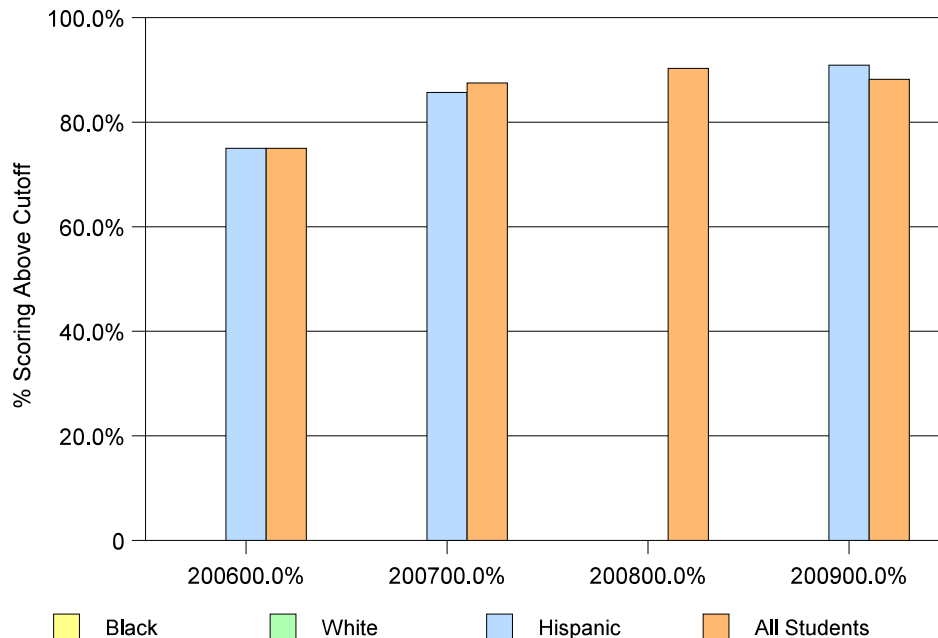
Readiness for College Results from the Florida College Placement Test 2006 - 2009

Blank cells indicate missing data

		Math		Reading		Writing		All 3 Subjects	
		# Tested	% scoring above cutoff	# Tested	% scoring above cutoff	# Tested	% scoring above cutoff	# Tested	% scoring above cutoff
Design & Architecture									
2009	Black								
	White								
	Hispanic	11	90.9%	11	90.9%	11	100.0%	11	90.9%
	All Students	34	88.2%	34	91.2%	34	94.1%	34	88.2%
2008	Black								
	White								
	Hispanic								
	All Students	31	93.5%	31	96.8%	31	96.8%	31	90.3%
2007	Black								
	White								
	Hispanic	14	85.7%	14	100.0%	14	100.0%	14	85.7%
	All Students	40	90.0%	40	97.5%	40	100.0%	40	87.5%
2006	Black								
	White								
	Hispanic	16	81.2%	16	93.8%	16	87.5%	16	75.0%
	All Students	44	77.3%	44	90.9%	44	88.6%	44	75.0%

Florida College Entry-Level Placement Test Results

Passed All Three Tests: 2006-2009



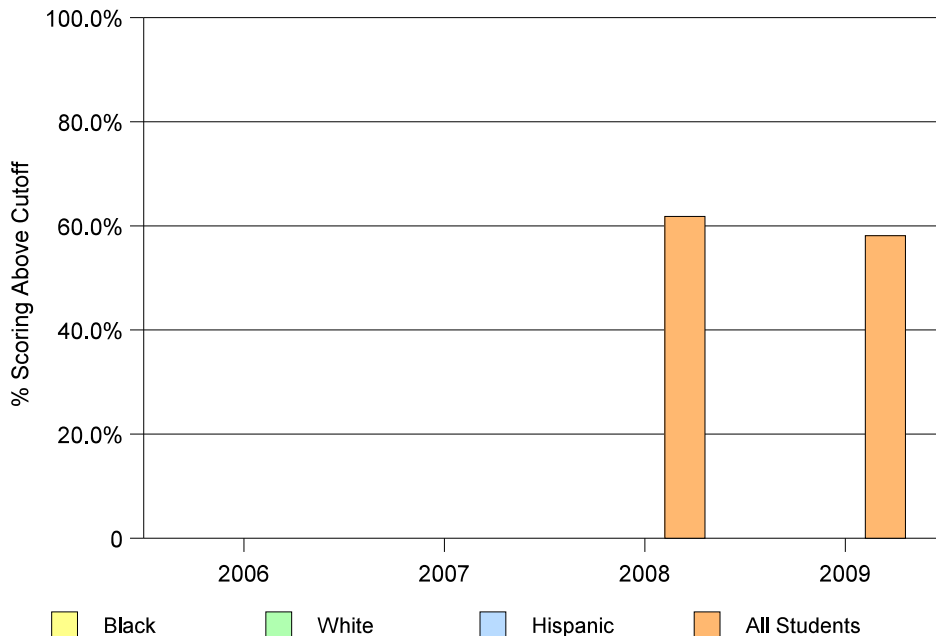
Readiness for College Results from the Florida College Placement Test 2006 - 2009

Blank cells indicate missing data

		Math		Reading		Writing		All 3 Subjects	
		# Tested	% scoring above cutoff	# Tested	% scoring above cutoff	# Tested	% scoring above cutoff	# Tested	% scoring above cutoff
Doctor's Charter of Miami Shores									
2009	Black								
	White								
	Hispanic								
	All Students	31	71.0%	31	83.9%	31	93.5%	31	58.1%
2008	Black								
	White								
	Hispanic								
	All Students	34	64.7%	34	82.4%	34	85.3%	34	61.8%
2007	Black								
	White								
	Hispanic								
	All Students								
2006	Black								
	White								
	Hispanic								
	All Students								

Florida College Entry-Level Placement Test Results

Passed All Three Tests: 2006-2009



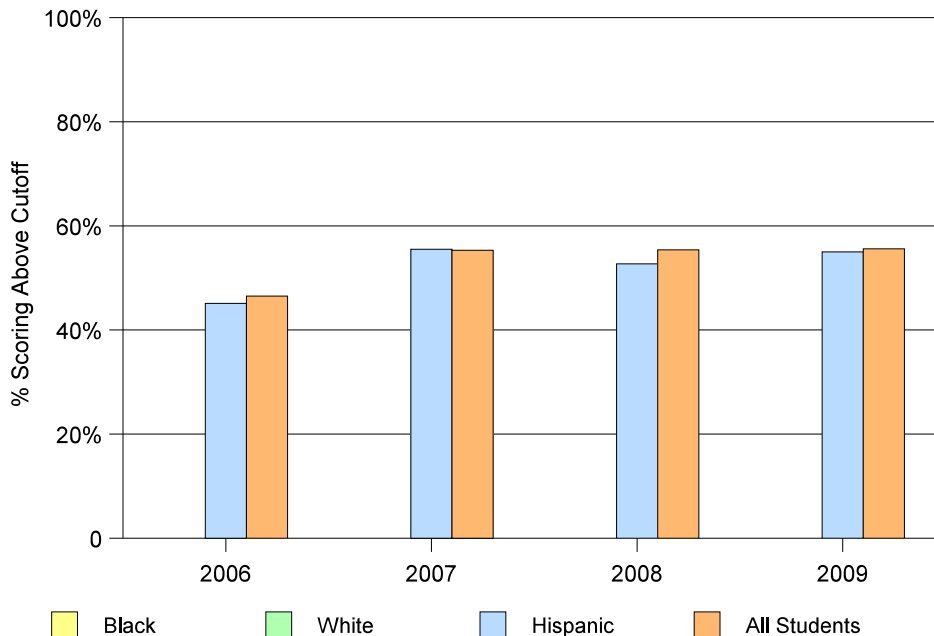
Readiness for College Results from the Florida College Placement Test 2006 - 2009

Blank cells indicate missing data

		Math		Reading		Writing		All 3 Subjects	
		# Tested	% scoring above cutoff	# Tested	% scoring above cutoff	# Tested	% scoring above cutoff	# Tested	% scoring above cutoff
Doral Academy Charter									
2009	Black								
	White								
	Hispanic	120	64.2%	120	79.2%	120	84.2%	120	55.0%
	All Students	133	63.9%	133	78.9%	133	83.5%	133	55.6%
2008	Black								
	White								
	All Students	167	62.3%	167	71.3%	167	81.4%	167	52.7%
2007	Black								
	White								
	All Students	182	66.5%	182	81.3%	182	87.4%	182	55.5%
2006	Black								
	White								
	All Students	122	54.9%	122	68.0%	122	84.4%	122	45.1%

Florida College Entry-Level Placement Test Results

Passed All Three Tests: 2005-2008



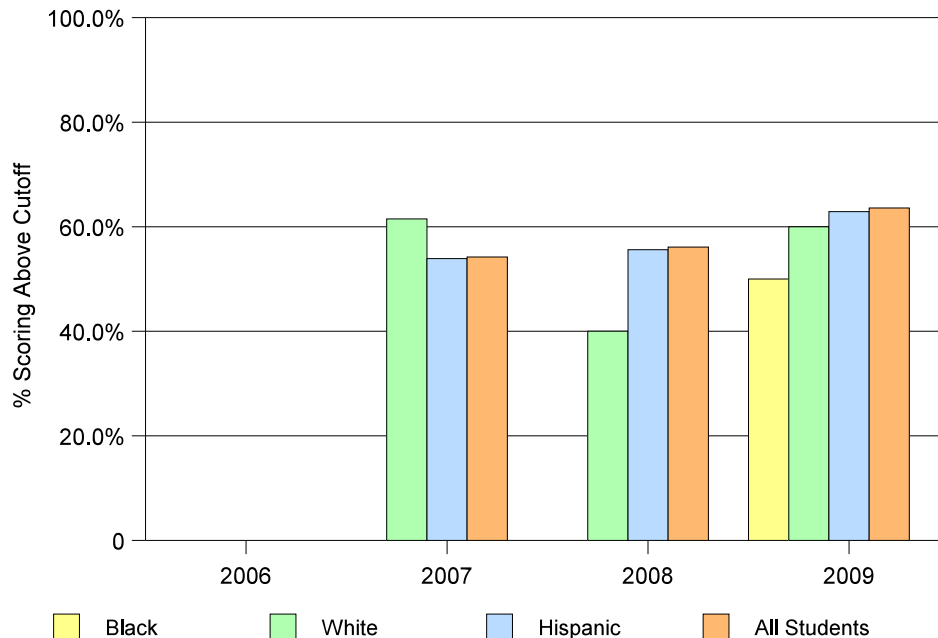
Readiness for College Results from the Florida College Placement Test 2006 - 2009

Blank cells indicate missing data

		Math		Reading		Writing		All 3 Subjects	
		# Tested	% scoring above cutoff	# Tested	% scoring above cutoff	# Tested	% scoring above cutoff	# Tested	% scoring above cutoff
John A. Ferguson									
2009	Black	10	80.0%	10	70.0%	10	100.0%	10	50.0%
	White	10	60.0%	10	90.0%	10	90.0%	10	60.0%
	Hispanic	534	68.2%	534	79.8%	534	86.0%	534	62.9%
	All Students	579	69.1%	579	80.3%	579	86.7%	579	63.6%
2008	Black								
	White	10	60.0%	10	60.0%	10	100.0%	10	40.0%
	Hispanic	476	63.0%	476	77.5%	476	81.5%	475	55.6%
	All Students	527	63.2%	527	77.8%	527	82.0%	526	56.1%
2007	Black								
	White	13	69.2%	13	84.6%	13	92.3%	13	61.5%
	Hispanic	332	62.7%	334	71.9%	334	80.5%	332	53.9%
	All Students	371	63.6%	373	71.6%	373	81.2%	371	54.2%
2006	Black								
	White								
	Hispanic								
	All Students								

Florida College Entry-Level Placement Test Results

Passed All Three Tests: 2006-2009

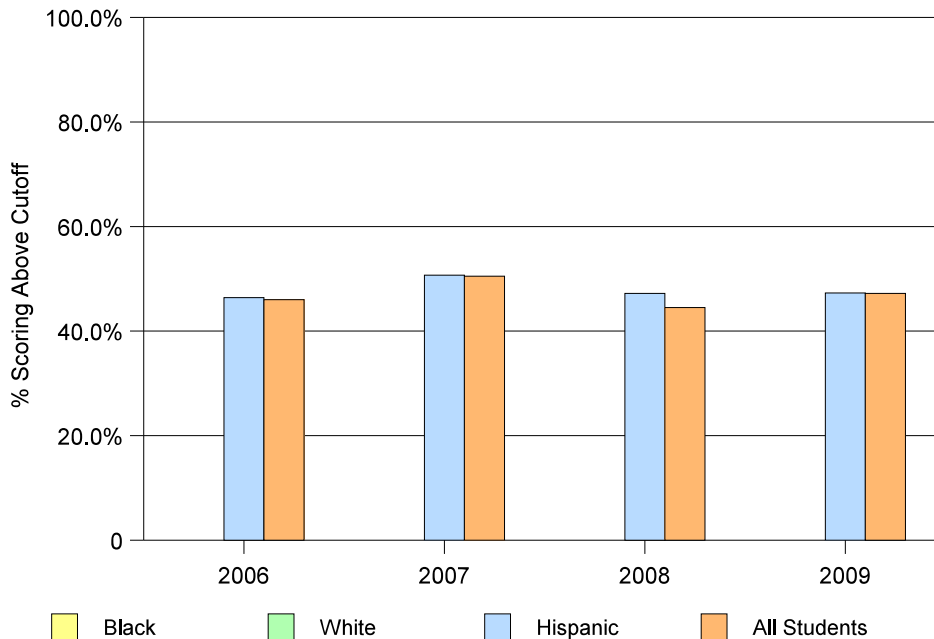


Readiness for College Results from the Florida College Placement Test 2006 - 2009

Blank cells indicate missing data

		Math		Reading		Writing		All 3 Subjects	
		# Tested	% scoring above cutoff	# Tested	% scoring above cutoff	# Tested	% scoring above cutoff	# Tested	% scoring above cutoff
Barbara Goleman									
2009	Black								
	White								
	Hispanic	414	53.6%	414	70.3%	414	77.5%	414	47.3%
	All Students	447	53.0%	447	70.5%	447	77.9%	447	47.2%
2008	Black								
	White								
	Hispanic	417	54.4%	418	67.2%	418	75.1%	417	47.2%
	All Students	456	54.2%	457	66.1%	457	74.2%	456	44.5%
2007	Black								
	White								
	Hispanic	403	58.8%	403	67.2%	403	77.2%	402	50.7%
	All Students	441	59.2%	441	67.1%	441	76.2%	440	50.5%
2006	Black								
	White								
	Hispanic	414	57.0%	415	66.7%	415	79.3%	414	46.4%
	All Students	439	56.7%	440	66.6%	440	78.4%	439	46.0%

**Florida College Entry-Level Placement Test Results
Passed All Three Tests: 2006-2009**



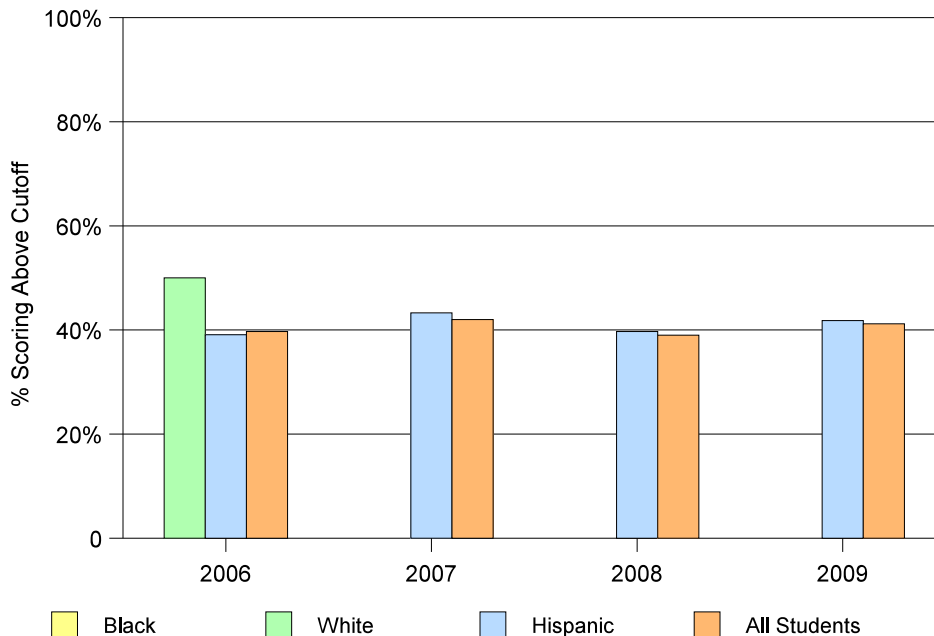
Readiness for College Results from the Florida College Placement Test 2006 - 2009

Blank cells indicate missing data

		Math		Reading		Writing		All 3 Subjects	
		# Tested	% scoring above cutoff	# Tested	% scoring above cutoff	# Tested	% scoring above cutoff	# Tested	% scoring above cutoff
Hialeah									
2009	Black								
	White								
	Hispanic	354	46.6%	355	72.4%	348	75.9%	347	41.8%
	All Students	378	46.3%	379	71.8%	372	75.8%	371	41.2%
2008	Black								
	White								
	All Students	383	44.9%	384	64.8%	380	76.8%	380	39.7%
2007	Black								
	White								
	All Students	357	48.5%	356	67.7%	356	74.2%	356	43.3%
2006	Black								
	White	12	50.0%	12	66.7%	12	83.3%	12	50.0%
	All Students	329	46.5%	330	62.4%	330	79.1%	327	39.1%

Florida College Entry-Level Placement Test Results

Passed All Three Tests: 2006-2009

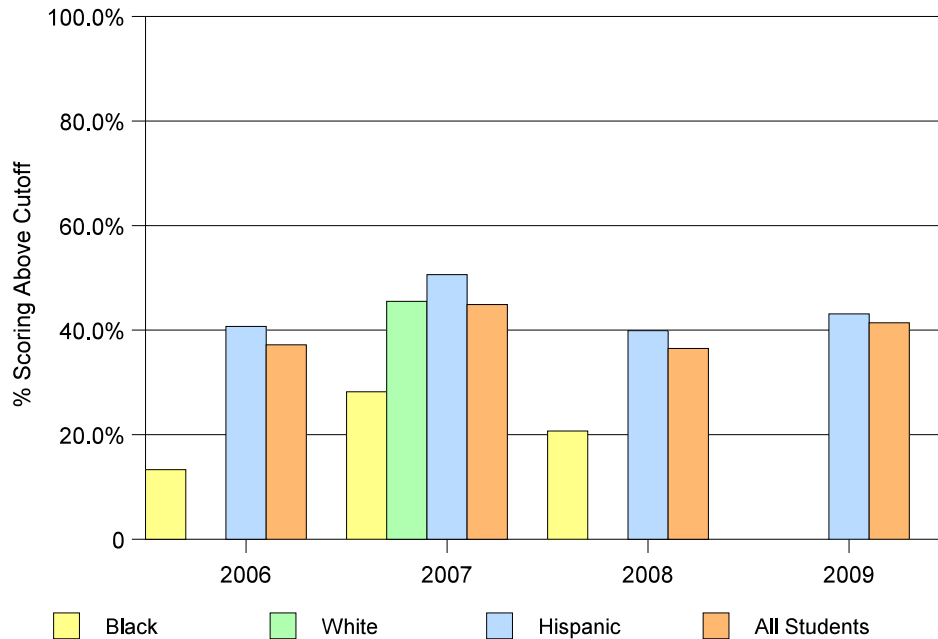


Readiness for College Results from the Florida College Placement Test 2006 - 2009

Blank cells indicate missing data

		Math		Reading		Writing		All 3 Subjects	
		# Tested	% scoring above cutoff	# Tested	% scoring above cutoff	# Tested	% scoring above cutoff	# Tested	% scoring above cutoff
Hialeah-Miami Lakes									
2009	Black								
	White								
	Hispanic	167	46.7%	168	72.6%	168	73.8%	167	43.1%
	All Students	191	45.5%	192	70.8%	192	71.4%	191	41.4%
2008	Black	29	24.1%	29	44.8%	29	58.6%	29	20.7%
	White								
	Hispanic	164	48.8%	164	65.9%	163	73.6%	163	39.9%
	All Students	209	45.5%	209	62.2%	208	70.7%	208	36.5%
2007	Black	39	35.9%	39	51.3%	39	66.7%	39	28.2%
	White	11	54.5%	11	63.6%	11	63.6%	11	45.5%
	Hispanic	176	55.1%	176	68.8%	176	75.6%	176	50.6%
	All Students	236	50.8%	236	64.8%	236	72.5%	236	44.9%
2006	Black	30	20.0%	30	46.7%	30	60.0%	30	13.3%
	White								
	Hispanic	194	51.0%	194	59.8%	194	73.2%	194	40.7%
	All Students	242	47.1%	242	58.3%	242	71.9%	242	37.2%

Florida College Entry-Level Placement Test Results
Passed All Three Tests: 2005-2008

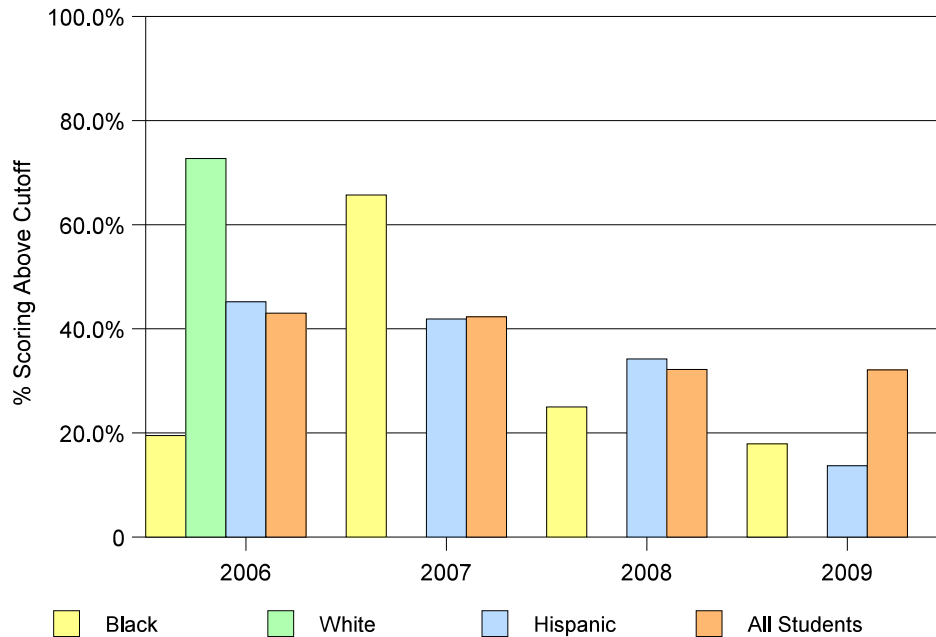


Readiness for College Results from the Florida College Placement Test 2006 - 2009

Blank cells indicate missing data

		Math		Reading		Writing		All 3 Subjects	
		# Tested	% scoring above cutoff	# Tested	% scoring above cutoff	# Tested	% scoring above cutoff	# Tested	% scoring above cutoff
Homestead									
2009	Black	56	21.4%	56	50.0%	56	55.4%	56	17.9%
	White								
	Hispanic	73	16.4%	73	38.4%	73	42.5%	73	13.7%
	All Students	134	38.1%	134	64.2%	134	63.4%	134	32.1%
2008	Black	40	35.0%	40	55.0%	40	57.5%	40	25.0%
	White								
	Hispanic	76	36.8%	76	57.9%	76	72.4%	76	34.2%
	All Students	121	37.2%	121	57.9%	121	67.8%	121	32.2%
2007	Black	42	45.2%	42	54.8%	42	69.0%	42	35.7%
	White								
	Hispanic	105	47.6%	105	63.8%	105	72.4%	105	41.9%
	All Students	156	49.4%	156	62.2%	156	72.4%	156	42.3%
2006	Black	41	22.0%	42	45.2%	42	59.5%	41	19.5%
	White	11	72.7%	11	90.9%	11	90.9%	11	72.7%
	Hispanic	84	57.1%	84	58.3%	84	75.0%	84	45.2%
	All Students	142	50.7%	143	59.4%	143	72.7%	142	43.0%

Florida College Entry-Level Placement Test Results
Passed All Three Tests: 2006-2009

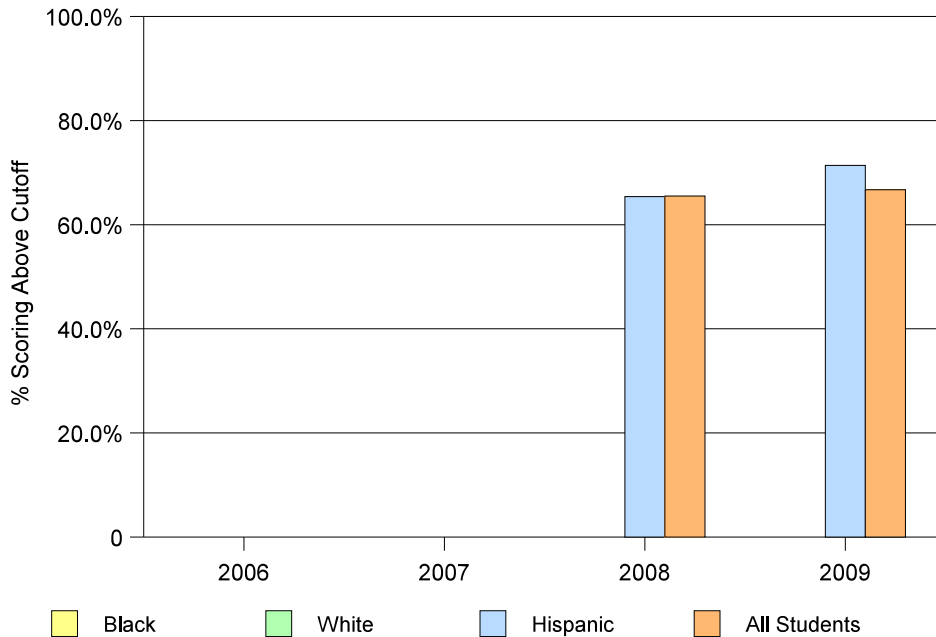


Readiness for College Results from the Florida College Placement Test 2006 - 2009

Blank cells indicate missing data

		Math		Reading		Writing		All 3 Subjects	
		# Tested	% scoring above cutoff	# Tested	% scoring above cutoff	# Tested	% scoring above cutoff	# Tested	% scoring above cutoff
International Studies Charter									
2009	Black								
	White								
	Hispanic	14	78.6%	14	78.6%	14	85.7%	14	71.4%
	All Students	21	76.2%	21	81.0%	21	85.7%	21	66.7%
2008	Black								
	White								
	Hispanic	26	73.1%	26	84.6%	26	92.3%	26	65.4%
2007	All Students	29	72.4%	29	86.2%	29	93.1%	29	65.4%
	Black								
	White								
2006	Hispanic								
	All Students								
	Black								
	White								

Florida College Entry-Level Placement Test Results
Passed All Three Tests: 2006-2009

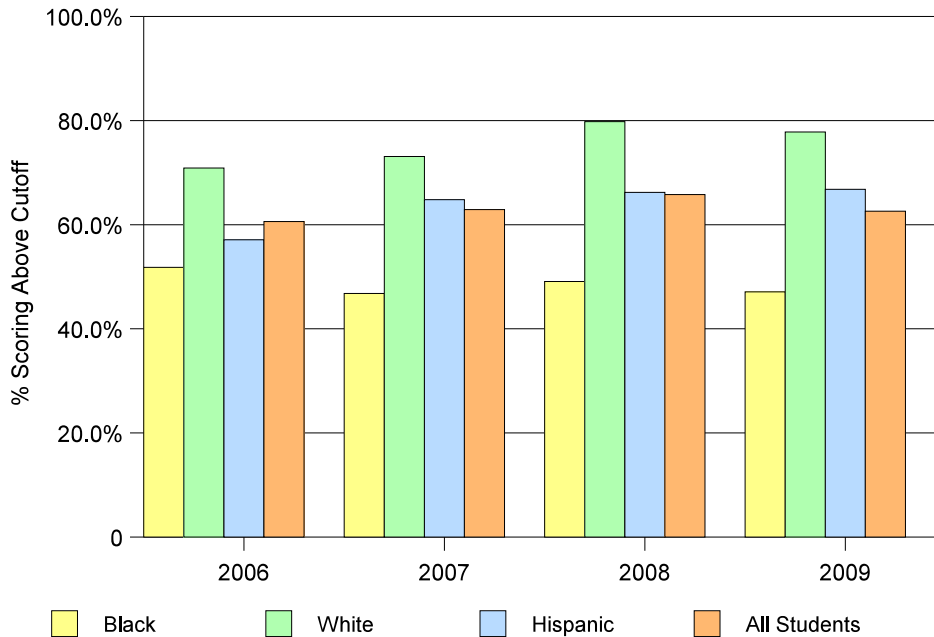


Readiness for College Results from the Florida College Placement Test 2006 - 2009

Blank cells indicate missing data

		Math		Reading		Writing		All 3 Subjects	
		# Tested	% scoring above cutoff	# Tested	% scoring above cutoff	# Tested	% scoring above cutoff	# Tested	% scoring above cutoff
Dr. Michael M. Krop									
2009	Black	156	57.1%	155	63.9%	156	68.6%	155	47.1%
	White	108	83.3%	109	82.6%	109	84.4%	108	77.8%
	Hispanic	199	76.9%	199	78.4%	199	82.9%	199	66.8%
	All Students	482	71.8%	482	74.3%	483	78.3%	481	62.6%
2008	Black	106	57.5%	106	70.8%	106	77.4%	106	49.1%
	White	114	84.2%	114	93.0%	114	93.9%	114	79.8%
	Hispanic	207	74.9%	207	76.8%	207	82.1%	207	66.2%
	All Students	447	73.6%	447	79.2%	447	83.9%	447	65.8%
2007	Black	124	56.6%	124	67.7%	124	66.9%	124	46.8%
	White	130	74.6%	130	84.6%	130	92.3%	130	73.1%
	Hispanic	176	71.0%	176	79.5%	176	85.2%	176	64.8%
	All Students	455	69.0%	455	78.0%	455	82.9%	455	62.9%
2006	Black	112	63.4%	112	71.4%	112	76.8%	112	51.8%
	White	117	77.8%	117	78.6%	117	84.6%	117	70.9%
	Hispanic	198	67.2%	197	70.1%	197	81.2%	196	57.1%
	All Students	453	69.8%	450	73.3%	450	81.6%	449	60.6%

Florida College Entry-Level Placement Test Results
Passed All Three Tests: 2006-2009

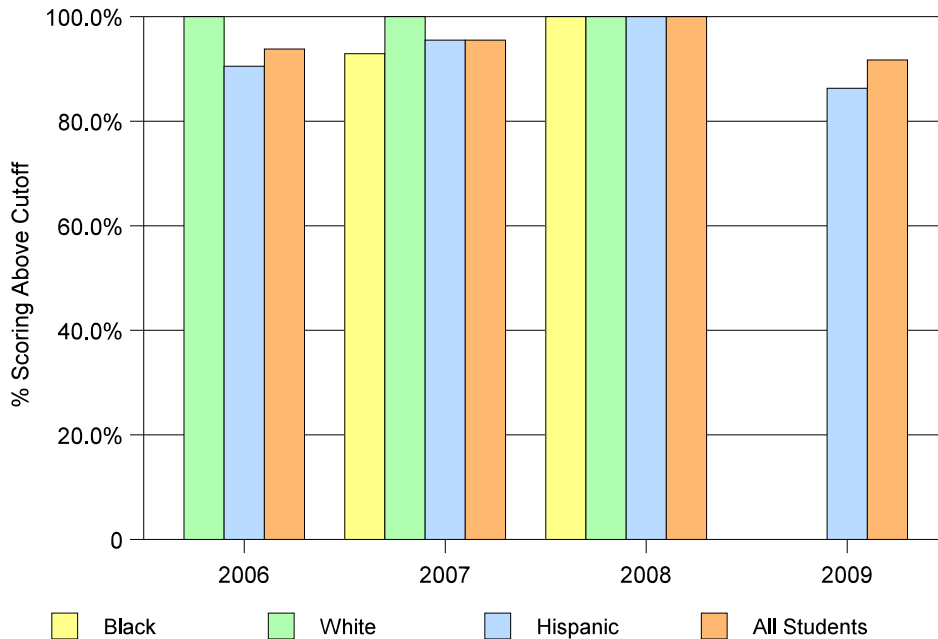


Readiness for College Results from the Florida College Placement Test 2006 - 2009

Blank cells indicate missing data

		Math		Reading		Writing		All 3 Subjects	
		# Tested	% scoring above cutoff	# Tested	% scoring above cutoff	# Tested	% scoring above cutoff	# Tested	% scoring above cutoff
MAST Academy									
2009	Black								
	White								
	Hispanic	51	88.2%	51	94.1%	51	96.1%	51	86.3%
	All Students	84	92.9%	84	96.4%	84	97.6%	84	91.7%
2008	Black								
	White	11	100.0%	11	100.0%	11	100.0%	11	100.0%
	Hispanic	39	100.0%	39	100.0%	39	100.0%	39	100.0%
	All Students	72	98.6%	72	100.0%	72	100.0%	72	98.6%
2007	Black	14	92.9%	14	100.0%	14	100.0%	14	92.9%
	White	15	100.0%	15	100.0%	15	100.0%	15	100.0%
	Hispanic	44	97.7%	44	95.5%	44	97.7%	44	95.5%
	All Students	89	96.6%	89	97.8%	89	98.9%	89	95.5%
2006	Black								
	White	12	100.0%	12	100.0%	12	100.0%	12	100.0%
	Hispanic	42	92.9%	42	97.6%	72	97.6%	94	90.5%
	All Students	81	96.3%	81	97.5%	81	97.5%	81	93.8%

**Florida College Entry-Level Placement Test Results
Passed All Three Tests: 2006-2009**

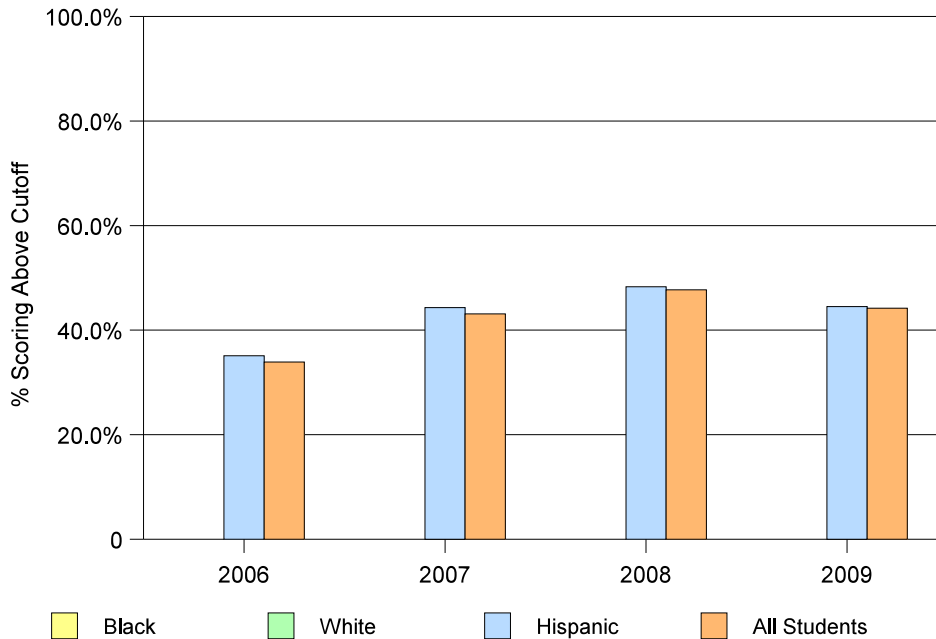


Readiness for College Results from the Florida College Placement Test 2006 - 2009

Blank cells indicate missing data

		Math		Reading		Writing		All 3 Subjects	
		# Tested	% scoring above cutoff	# Tested	% scoring above cutoff	# Tested	% scoring above cutoff	# Tested	% scoring above cutoff
Mater Academy									
2009	Black								
	White								
	Hispanic	265	51.7%	266	76.3%	266	77.8%	265	44.5%
	All Students	274	51.1%	275	75.3%	275	77.1%	274	44.2%
2008	Black								
	White								
	Hispanic	205	59.0%	206	69.9%	206	76.7%	205	48.3%
	All Students	218	57.8%	219	69.4%	219	76.7%	218	47.7%
2007	Black								
	White								
	Hispanic	176	50.6%	176	69.3%	176	80.7%	176	44.3%
	All Students	188	50.0%	188	67.6%	188	78.2%	188	43.1%
2006	Black								
	White								
	Hispanic	57	42.1%	57	57.9%	57	75.4%	57	35.1%
	All Students	60	41.7%	59	55.9%	59	74.6%	59	33.9%

**Florida College Entry-Level Placement Test Results
Passed All Three Tests: 2006-2009**

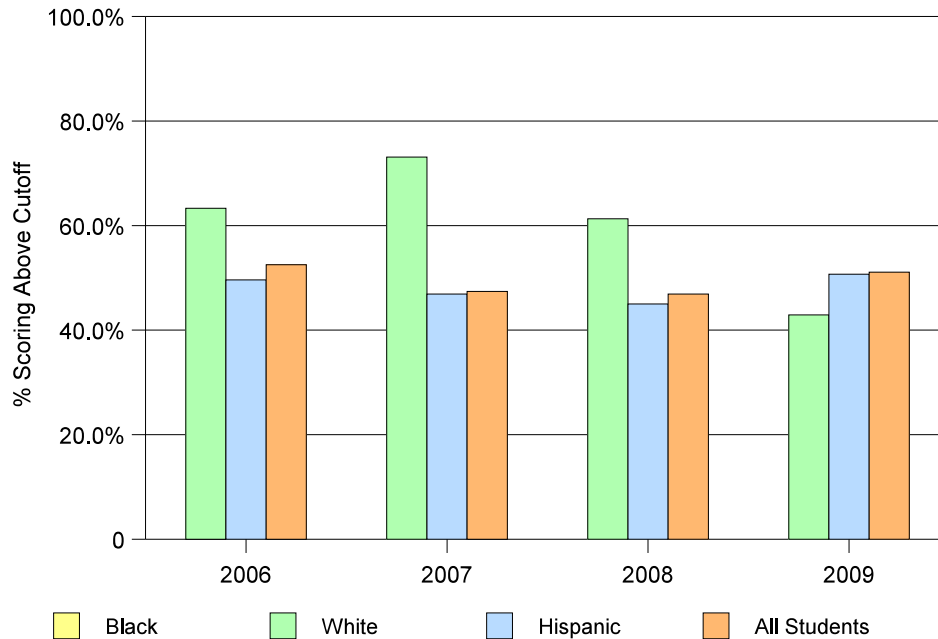


Readiness for College Results from the Florida College Placement Test 2006 - 2009

Blank cells indicate missing data

		Math		Reading		Writing		All 3 Subjects	
		# Tested	% scoring above cutoff	# Tested	% scoring above cutoff	# Tested	% scoring above cutoff	# Tested	% scoring above cutoff
Miami Beach									
2009	Black								
	White	14	42.9%	14	78.6%	14	85.7%	14	42.9%
	Hispanic	144	59.7%	144	69.4%	144	78.5%	144	50.7%
	All Students	178	59.0%	178	71.9%	178	79.8%	178	51.1%
2008	Black								
	White	31	61.3%	31	74.2%	31	80.6%	31	61.3%
	Hispanic	149	49.7%	149	70.5%	149	79.9%	149	45.0%
	All Students	207	50.7%	207	69.6%	207	79.7%	207	46.9%
2007	Black								
	White	26	73.1%	26	84.6%	26	88.5%	26	73.1%
	Hispanic	145	55.2%	145	67.6%	145	81.4%	145	46.9%
	All Students	192	55.2%	192	67.7%	192	81.8%	192	47.4%
2006	Black								
	White	30	66.7%	30	80.0%	30	83.3%	30	63.3%
	Hispanic	127	55.9%	127	64.6%	127	78.0%	127	49.6%
	All Students	181	58.0%	181	68.0%	181	79.6%	181	52.5%

**Florida College Entry-Level Placement Test Results
Passed All Three Tests: 2006-2009**

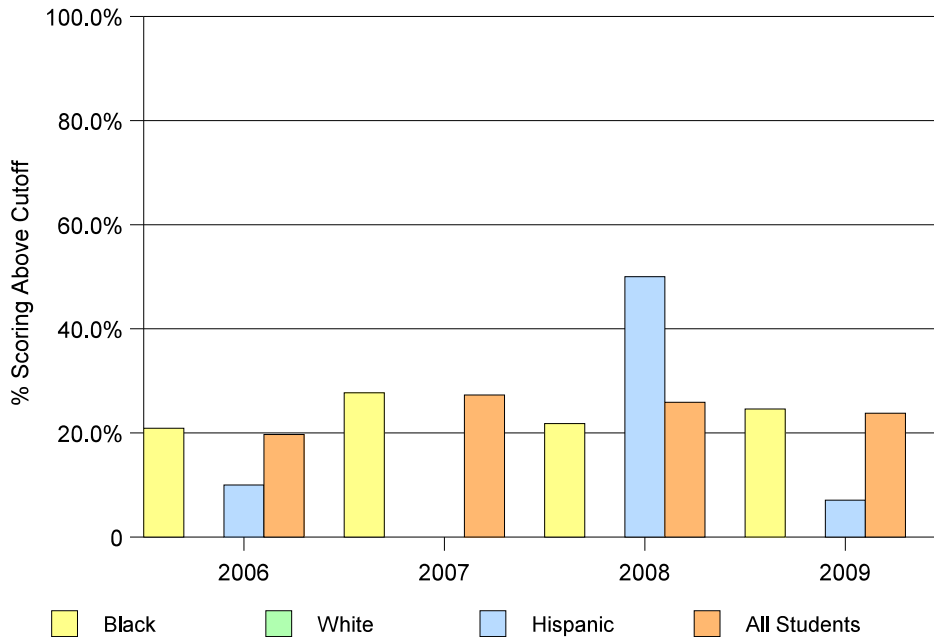


Readiness for College Results from the Florida College Placement Test 2006 - 2009

Blank cells indicate missing data

		Math		Reading		Writing		All 3 Subjects	
		# Tested	% scoring above cutoff	# Tested	% scoring above cutoff	# Tested	% scoring above cutoff	# Tested	% scoring above cutoff
Miami Carol City									
2009	Black	143	32.2%	143	48.3%	142	51.4%	142	24.6%
	White								
	Hispanic	14	14.3%	14	35.7%	14	71.4%	14	7.1%
	All Students	165	30.9%	165	47.3%	164	54.3%	164	23.8%
2008	Black	124	31.5%	124	47.6%	124	51.6%	124	21.8%
	White								
	Hispanic	10	60.0%	10	90.0%	10	60.0%	10	50.0%
	All Students	143	35.7%	143	51.7%	143	53.1%	143	25.9%
2007	Black	137	35.8%	138	55.1%	138	63.8%	137	27.7%
	White								
	Hispanic								
	All Students	150	35.3%	151	54.3%	151	64.2%	150	27.3%
2006	Black	115	27.0%	115	47.8%	115	63.5%	115	20.9%
	White								
	Hispanic	10	10.0%	10	60.0%	10	70.0%	10	10.0%
	All Students	132	25.0%	132	49.2%	132	64.4%	132	19.7%

Florida College Entry-Level Placement Test Results
Passed All Three Tests: 2006-2009

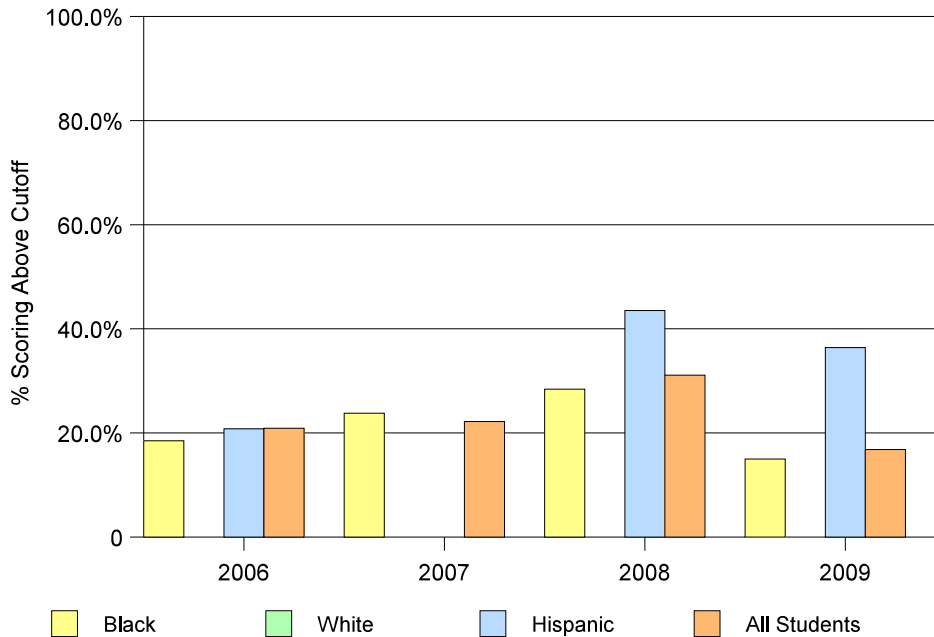


Readiness for College Results from the Florida College Placement Test 2006 - 2009

Blank cells indicate missing data

		Math		Reading		Writing		All 3 Subjects	
		# Tested	% scoring above cutoff	# Tested	% scoring above cutoff	# Tested	% scoring above cutoff	# Tested	% scoring above cutoff
Miami Central									
2009	Black	100	18.0%	100	45.0%	100	43.0%	100	15.0%
	White								
	Hispanic	11	45.5%	11	45.5%	11	54.5%	11	36.4%
	All Students	119	20.2%	119	47.1%	119	45.4%	119	16.8%
2008	Black	110	39.1%	109	53.2%	109	58.7%	109	28.4%
	White								
	Hispanic	23	47.8%	23	60.9%	23	69.6%	23	43.5%
	All Students	136	40.4%	135	54.8%	135	61.5%	135	31.1%
2007	Black	130	33.1%	130	45.4%	130	53.1%	130	23.8%
	White								
	Hispanic								
	All Students	153	30.1%	153	47.1%	153	52.9%	153	22.2%
2006	Black	151	26.5%	151	39.7%	151	48.3%	151	18.5%
	White								
	Hispanic	24	37.5%	24	54.2%	24	62.5%	24	20.8%
	All Students	187	30.5%	187	42.8%	187	52.4%	187	20.9%

Florida College Entry-Level Placement Test Results
Passed All Three Tests: 2006-2009

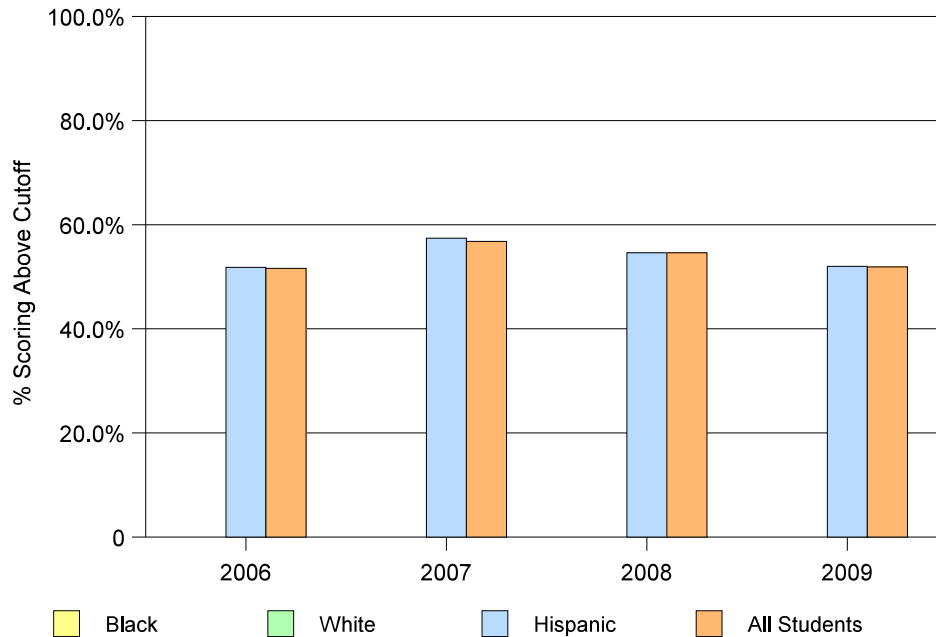


Readiness for College Results from the Florida College Placement Test 2006 - 2009

Blank cells indicate missing data

		Math		Reading		Writing		All 3 Subjects	
		# Tested	% scoring above cutoff	# Tested	% scoring above cutoff	# Tested	% scoring above cutoff	# Tested	% scoring above cutoff
Miami Coral Park									
2009	Black								
	White								
	Hispanic	432	57.6%	432	74.5%	431	77.7%	431	52.0%
	All Students	454	58.1%	454	74.4%	453	77.9%	453	51.9%
2008	Black								
	White								
	All Students	443	63.2%	443	75.8%	444	81.8%	443	54.6%
2007	Black								
	White								
	All Students	476	63.9%	476	75.6%	477	81.6%	476	54.6%
2006	Black								
	White								
	Hispanic	441	66.2%	441	76.0%	441	83.7%	441	57.4%
	All Students	470	65.5%	470	76.0%	470	83.6%	470	56.8%
2006	Black								
	White								
	All Students	415	58.8%	417	71.0%	417	84.9%	415	51.8%
		448	58.5%	450	70.9%	450	84.4%	448	51.6%

Florida College Entry-Level Placement Test Results
Passed All Three Tests: 2006-2009

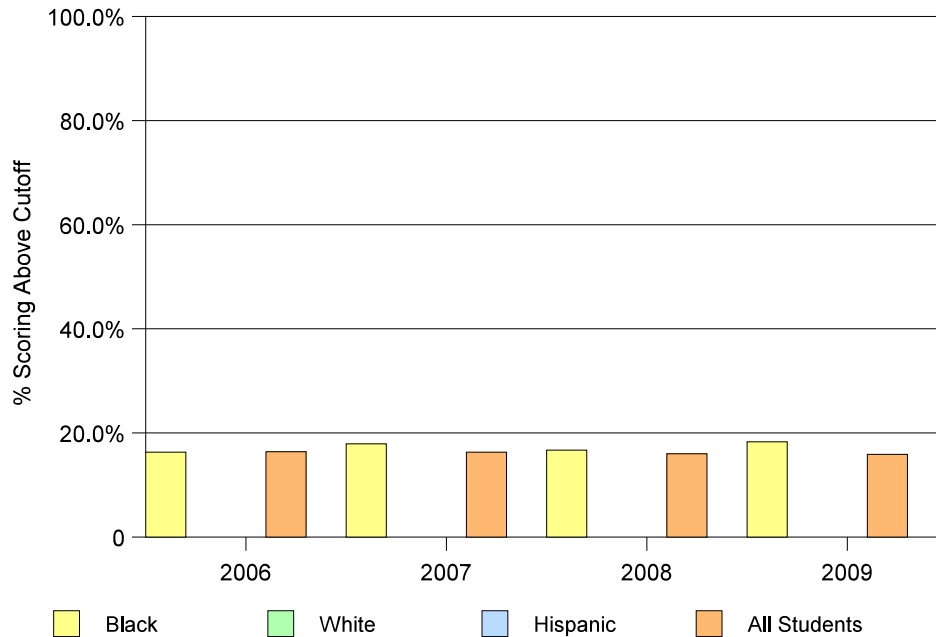


Readiness for College Results from the Florida College Placement Test 2006 - 2009

Blank cells indicate missing data

			Math		Reading		Writing		All 3 Subjects	
			# Tested	% scoring above cutoff	# Tested	% scoring above cutoff	# Tested	% scoring above cutoff	# Tested	% scoring above cutoff
Miami Edison										
2009	Black		60	31.7%	60	45.0%	60	43.3%	60	18.3%
	White									
	Hispanic									
2008	All Students		69	27.5%	69	42.0%	69	42.0%	69	15.9%
	Black		66	19.7%	66	39.4%	66	45.5%	66	16.7%
	White									
2007	Hispanic		76	22.4%	76	36.8%	75	44.0%	75	16.0%
	All Students		39	23.1%	39	38.5%	39	43.6%	39	17.9%
	Black		43	23.3%	43	34.9%	43	39.5%	43	16.3%
2006	White		49	22.4%	49	44.9%	49	51.0%	49	16.3%
	Hispanic		55	21.8%	55	45.5%	55	49.1%	55	16.4%
	All Students									

Florida College Entry-Level Placement Test Results
Passed All Three Tests: 2006-2009

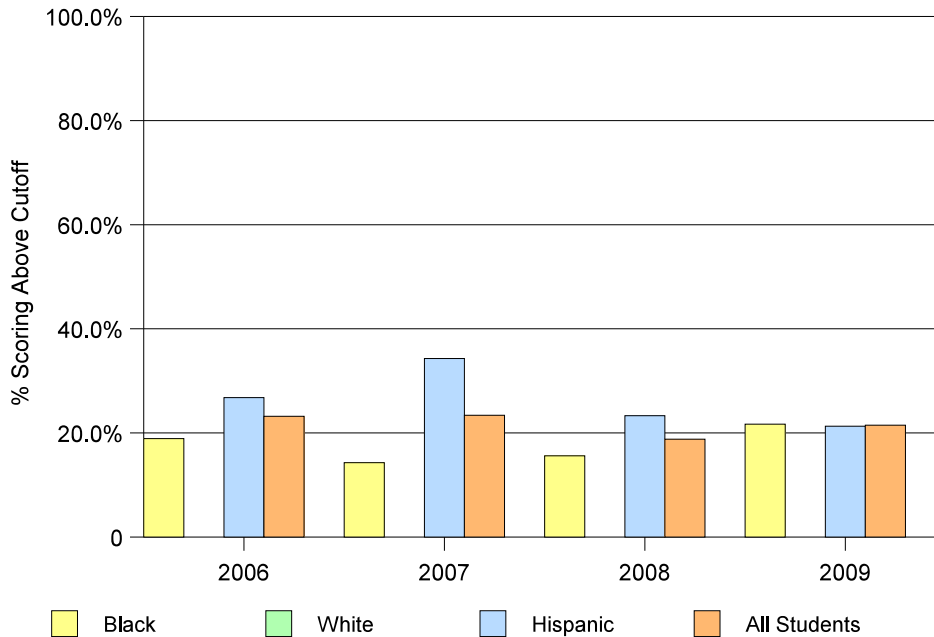


Readiness for College Results from the Florida College Placement Test 2006 - 2009

Blank cells indicate missing data

		Math		Reading		Writing		All 3 Subjects	
		# Tested	% scoring above cutoff	# Tested	% scoring above cutoff	# Tested	% scoring above cutoff	# Tested	% scoring above cutoff
Miami Jackson									
2009	Black	45	26.7%	46	37.0%	46	45.7%	45	21.7%
	White								
	Hispanic	47	23.4%	47	44.7%	47	53.2%	47	21.3%
	All Students	93	24.7%	94	41.5%	94	48.9%	93	21.5%
2008	Black	32	18.8%	32	46.9%	32	37.5%	32	15.6%
	White								
	Hispanic	30	33.3%	30	53.3%	30	70.0%	30	23.3%
	All Students	64	28.1%	64	48.4%	64	54.7%	64	18.8%
2007	Black	42	23.8%	42	45.2%	42	50.0%	42	14.3%
	White								
	Hispanic	35	37.1%	35	62.9%	35	82.9%	35	34.3%
	All Students	77	29.9%	77	53.2%	77	64.9%	77	23.4%
2006	Black	37	247.3%	37	43.2%	37	51.4%	37	18.9%
	White								
	Hispanic	56	33.9%	56	42.9%	56	57.1%	56	26.8%
	All Students	99	29.3%	99	43.4%	99	55.6%	99	23.2%

Florida College Entry-Level Placement Test Results
Passed All Three Tests: 2006-2009

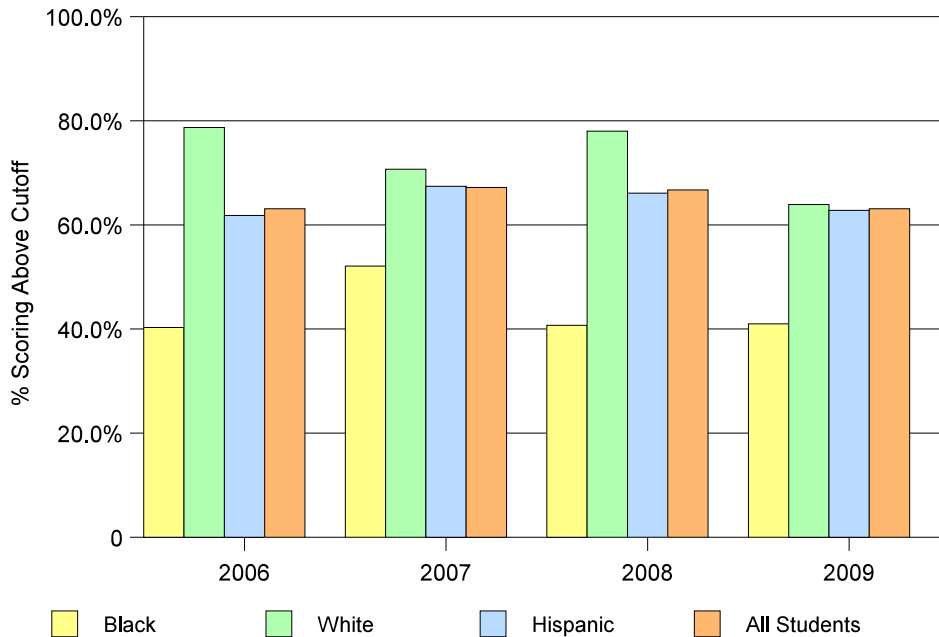


Readiness for College Results from the Florida College Placement Test 2006 - 2009

Blank cells indicate missing data

		Math		Reading		Writing		All 3 Subjects	
		# Tested	% scoring above cutoff	# Tested	% scoring above cutoff	# Tested	% scoring above cutoff	# Tested	% scoring above cutoff
Miami Killian									
2009	Black	61	47.5%	61	67.2%	61	68.9%	61	41.0%
	White	97	77.3%	97	90.7%	97	90.7%	97	63.9%
	Hispanic	298	69.8%	298	79.9%	298	83.6%	298	62.8%
	All Students	471	69.2%	471	80.9%	471	83.4%	471	63.1%
2008	Black	59	45.8%	59	62.7%	59	67.8%	59	40.7%
	White	123	81.3%	123	87.0%	123	89.4%	123	78.0%
	Hispanic	286	71.3%	286	82.5%	286	86.4%	286	66.1%
	All Students	487	71.3%	487	81.5%	487	85.0%	487	66.7%
2007	Black	49	61.2%	48	68.8%	48	68.8%	48	52.1%
	White	99	78.8%	99	81.8%	99	90.9%	99	70.7%
	Hispanic	288	74.3%	288	81.3%	288	85.8%	288	67.4%
	All Students	464	74.4%	463	80.3%	463	85.1%	463	67.2%
2006	Black	72	58.3%	72	58.3%	72	73.6%	72	40.3%
	White	108	85.2%	109	88.1%	109	95.4%	108	78.7%
	Hispanic	272	69.5%	272	76.1%	272	85.7%	272	61.8%
	All Students	477	72.1%	478	76.6%	478	86.4%	477	63.1%

**Florida College Entry-Level Placement Test Results
Passed All Three Tests: 2006-2009**

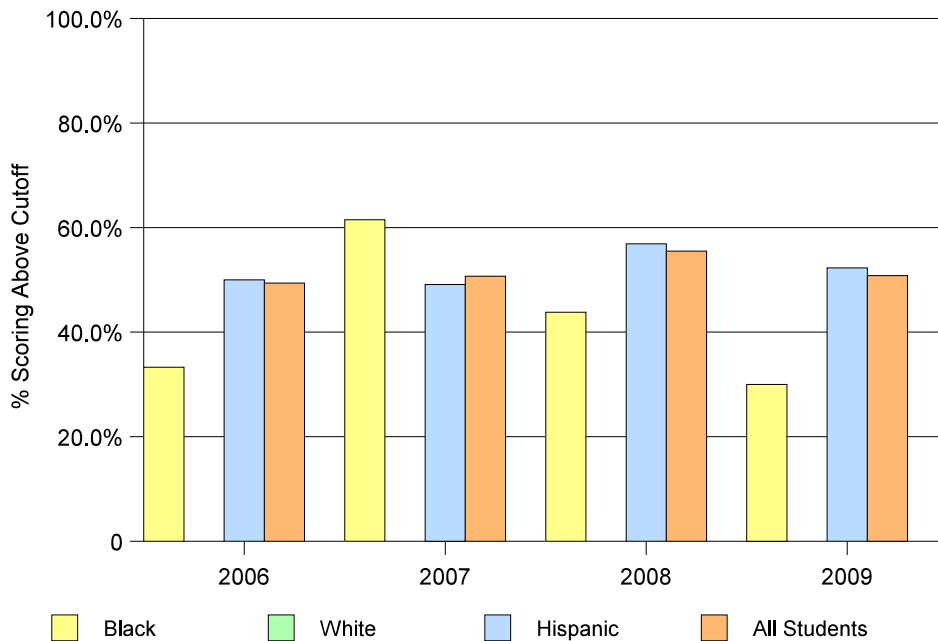


Readiness for College Results from the Florida College Placement Test 2006 - 2009

Blank cells indicate missing data

		Math		Reading		Writing		All 3 Subjects	
		# Tested	% scoring above cutoff	# Tested	% scoring above cutoff	# Tested	% scoring above cutoff	# Tested	% scoring above cutoff
Miami Lakes Ed. Cntr.									
2009	Black	10	30.0%	10	50.0%	10	50.0%	10	30.0%
	White								
	Hispanic	153	57.5%	153	81.0%	153	81.0%	153	52.3%
	All Students	181	55.2%	181	79.6%	181	80.1%	181	50.8%
2008	Black	16	56.2%	16	81.2%	16	75.0%	16	43.8%
	White								
	Hispanic	131	61.1%	130	83.1%	130	86.9%	130	56.9%
	All Students	165	60.6%	165	81.8%	165	85.5%	164	55.5%
2007	Black	13	61.5%	13	84.6%	13	84.6%	13	61.5%
	White								
	Hispanic	110	57.3%	111	75.7%	111	82.9%	110	49.1%
	All Students	138	59.4%	139	75.5%	139	82.7%	138	50.7%
2006	Black	15	40.0%	15	66.7%	15	86.7%	15	33.3%
	White								
	Hispanic	130	53.8%	130	70.8%	130	80.8%	130	50.0%
	All Students	164	53.0%	164	71.3%	164	82.9%	164	49.4%

**Florida College Entry-Level Placement Test Results
Passed All Three Tests: 2006-2009**

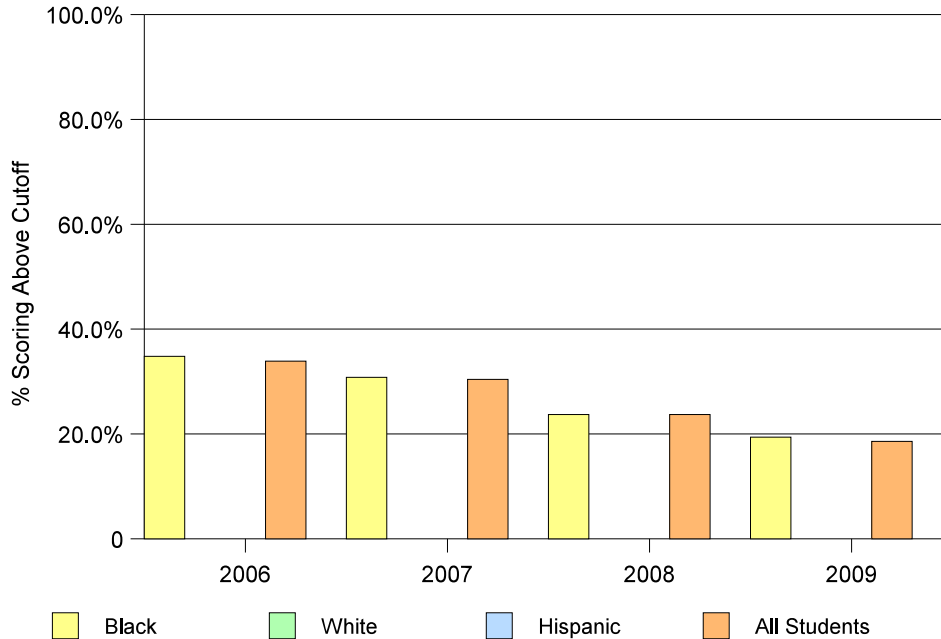


Readiness for College Results from the Florida College Placement Test 2006 - 2009

Blank cells indicate missing data

			Math		Reading		Writing		All 3 Subjects	
			# Tested	% scoring above cutoff	# Tested	% scoring above cutoff	# Tested	% scoring above cutoff	# Tested	% scoring above cutoff
Miami Norland										
2009	Black		130	30.8%	132	62.9%	131	53.4%	129	19.4%
	White									
	Hispanic									
2008	All Students		141	31.2%	143	49.0%	142	54.2%	140	18.6%
	Black		139	38.8%	139	52.5%	139	56.1%	139	23.7%
	White									
2007	Hispanic		152	38.2%	152	53.3%	152	55.3%	152	23.7%
	All Students		120	40.8%	120	60.8%	120	60.0%	120	30.8%
	Black		135	40.7%	135	60.0%	135	61.5%	135	30.4%
2006	White		115	49.6%	116	58.6%	116	69.0%	115	34.8%
	Hispanic		124	47.6%	125	59.2%	125	69.6%	124	33.9%
	All Students									

Florida College Entry-Level Placement Test Results
Passed All Three Tests: 2006-2009

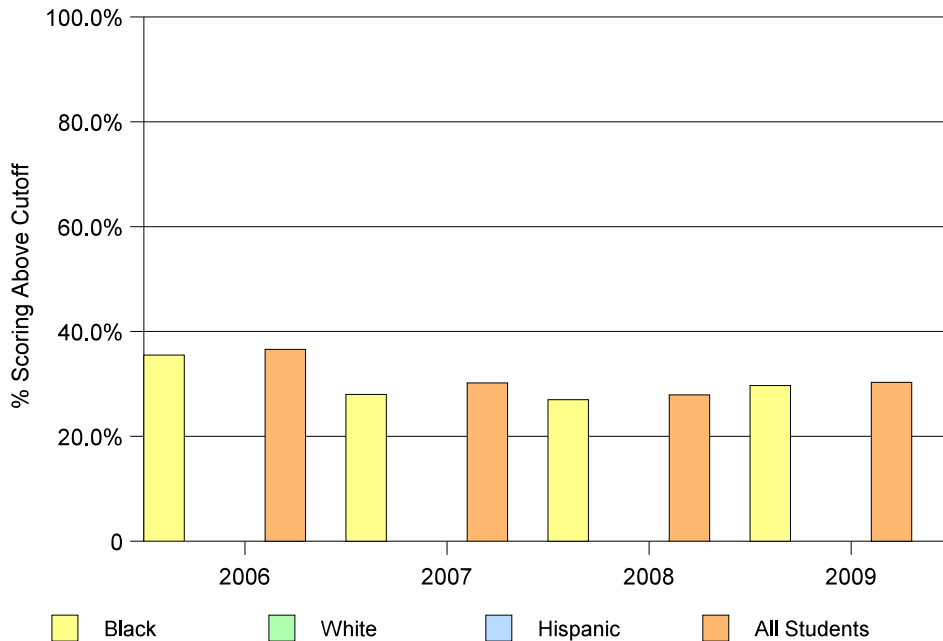


Readiness for College Results from the Florida College Placement Test 2006 - 2009

Blank cells indicate missing data

			Math		Reading		Writing		All 3 Subjects	
			# Tested	% scoring above cutoff	# Tested	% scoring above cutoff	# Tested	% scoring above cutoff	# Tested	% scoring above cutoff
Miami Northwestern										
2009	Black		148	33.1%	149	58.4%	149	59.7%	148	29.7%
	White									
	Hispanic									
2008	All Students		155	33.5%	156	57.7%	156	60.3%	155	30.3%
	Black		100	36.0%	100	53.0%	100	61.0%	100	27.0%
	White									
2007	Hispanic		111	36.9%	111	53.2%	111	62.2%	111	27.9%
	All Students		150	36.0%	150	55.3%	150	56.0%	150	28.0%
	Black		159	39.0%	159	56.0%	159	57.2%	159	30.2%
2006	White		125	40.8%	124	57.3%	124	65.3%	124	35.5%
	Hispanic		143	42.7%	142	57.7%	142	65.5%	142	36.6%
	All Students									

**Florida College Entry-Level Placement Test Results
Passed All Three Tests: 2006-2009**

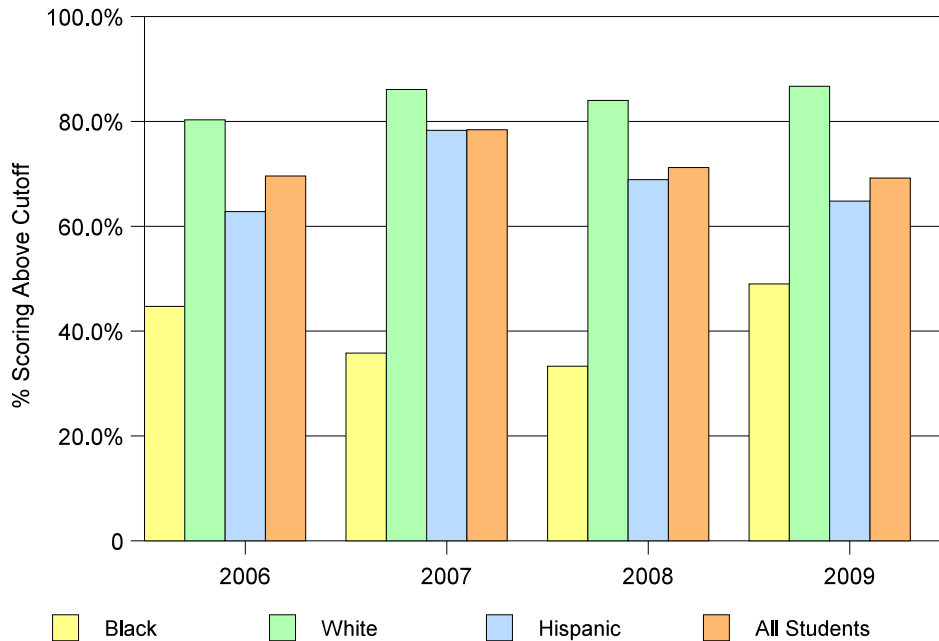


Readiness for College Results from the Florida College Placement Test 2006 - 2009

Blank cells indicate missing data

		Math		Reading		Writing		All 3 Subjects	
		# Tested	% scoring above cutoff	# Tested	% scoring above cutoff	# Tested	% scoring above cutoff	# Tested	% scoring above cutoff
Miami Palmetto									
2009	Black	49	53.1%	49	61.2%	49	67.3%	49	49.0%
	White	153	85.6%	153	87.6%	153	91.5%	153	86.7%
	Hispanic	199	70.9%	199	80.9%	199	88.4%	199	64.8%
	All Students	426	75.1%	426	81.0%	426	87.1%	426	69.2%
2008	Black	45	55.6%	45	48.9%	45	62.2%	45	33.3%
	White	151	87.4%	151	93.4%	151	95.4%	150	84.0%
	Hispanic	238	76.5%	238	79.8%	238	88.2%	238	68.9%
	All Students	469	79.1%	469	82.1%	469	88.3%	468	71.2%
2007	Black	53	50.9%	53	49.1%	53	66.0%	53	35.8%
	White	209	87.6%	209	93.8%	209	93.3%	209	86.1%
	Hispanic	245	81.6%	244	88.1%	244	91.0%	244	78.3%
	All Students	543	82.1%	542	87.1%	542	90.0%	542	78.4%
2006	Black	38	63.2%	38	63.2%	38	86.8%	38	44.7%
	White	183	82.0%	183	92.9%	183	96.2%	183	80.3%
	Hispanic	199	70.9%	199	75.9%	199	88.4%	199	62.8%
	All Students	451	76.1%	451	82.3%	451	91.8%	451	69.6%

**Florida College Entry-Level Placement Test Results
Passed All Three Tests: 2006-2009**

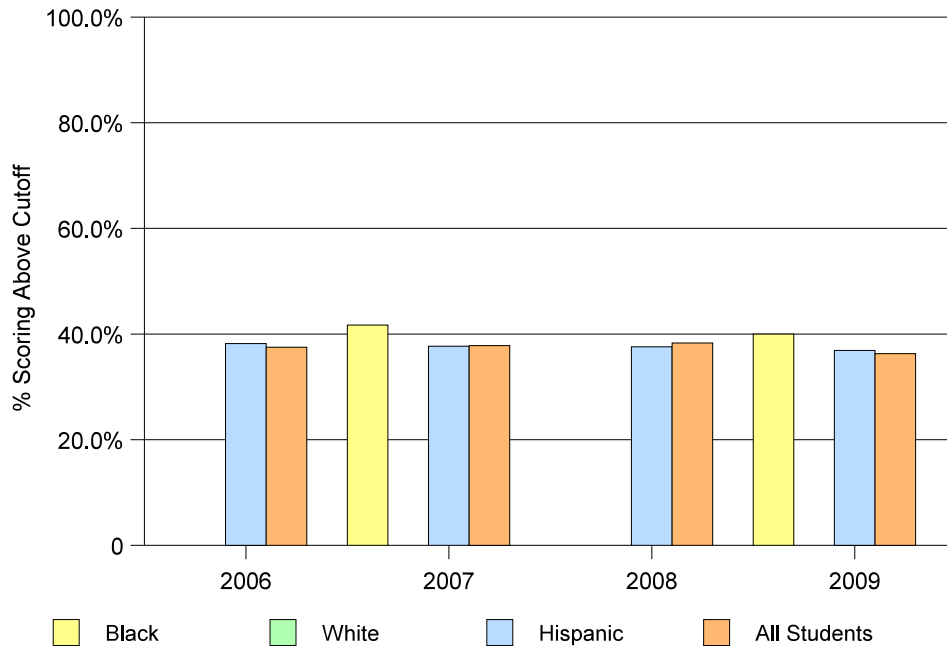


Readiness for College Results from the Florida College Placement Test 2006 - 2009

Blank cells indicate missing data

		Math		Reading		Writing		All 3 Subjects	
		# Tested	% scoring above cutoff	# Tested	% scoring above cutoff	# Tested	% scoring above cutoff	# Tested	% scoring above cutoff
Miami Senior									
2009	Black	10	40.0%	40	70.0%	10	50.0%	10	40.0%
	White								
	Hispanic	318	43.1%	319	61.4%	319	73.7%	317	36.9%
	All Students	348	43.1%	349	61.0%	349	72.8%	347	36.3%
2008	Black								
	White								
	Hispanic	300	48.0%	298	65.8%	298	73.2%	298	37.6%
	All Students	329	48.6%	326	66.0%	326	73.6%	326	38.3%
2007	Black	12	41.7%	12	91.7%	12	66.7%	12	41.7%
	White								
	Hispanic	281	44.1%	281	62.6%	281	76.9%	281	37.7%
	All Students	315	44.1%	315	63.2%	315	76.5%	315	37.8%
2006	Black								
	White								
	Hispanic	246	48.8%	248	61.7%	248	75.0%	246	38.2%
	All Students	269	48.3%	271	61.6%	271	75.3%	269	37.5%

**Florida College Entry-Level Placement Test Results
Passed All Three Tests: 2006-2009**

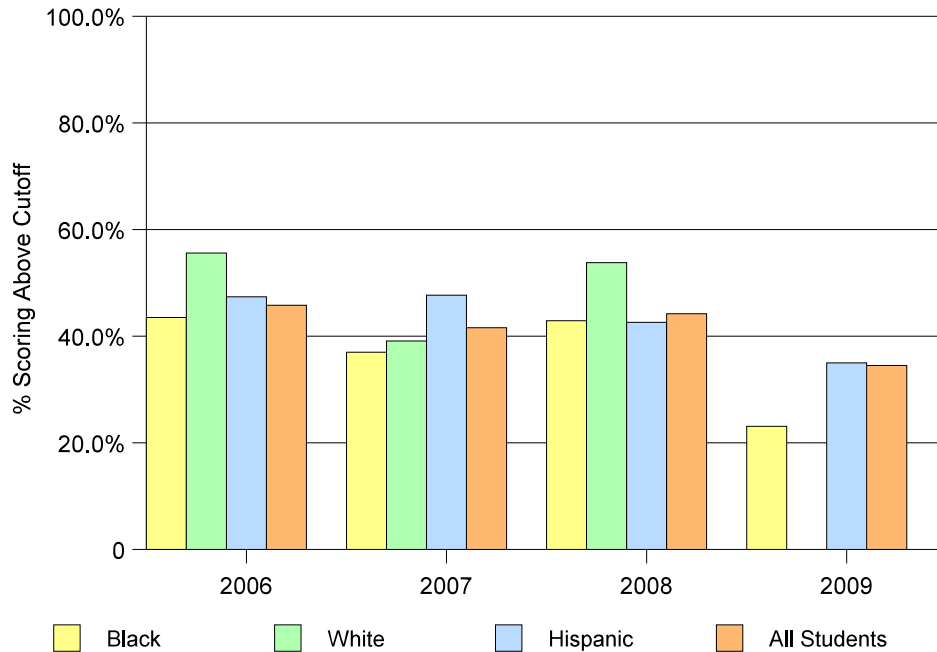


Readiness for College Results from the Florida College Placement Test 2006 - 2009

Blank cells indicate missing data

		Math		Reading		Writing		All 3 Subjects	
		# Tested	% scoring above cutoff	# Tested	% scoring above cutoff	# Tested	% scoring above cutoff	# Tested	% scoring above cutoff
Miami Southridge									
2009	Black	52	26.9%	53	45.3%	53	52.8%	52	23.1%
	White								
	Hispanic	123	46.3%	123	62.6%	123	74.8%	123	35.0%
	All Students	197	43.1%	198	59.1%	198	70.2%	197	34.5%
2008	Black	70	44.3%	70	65.7%	70	68.6%	70	42.9%
	White	26	61.5%	26	73.1%	26	80.8%	26	53.8%
	Hispanic	137	48.2%	136	69.1%	136	77.2%	136	42.6%
	All Students	243	48.6%	242	69.4%	242	76.0%	242	44.2%
2007	Black	54	48.1%	55	56.4%	55	72.7%	54	37.0%
	White	23	39.1%	23	60.9%	23	65.2%	23	39.1%
	Hispanic	107	58.9%	107	67.3%	107	70.1%	107	47.7%
	All Students	202	52.0%	203	64.0%	203	70.4%	202	41.6%
2006	Black	62	51.6%	62	66.1%	62	80.6%	62	43.5%
	White	27	74.1%	27	77.8%	27	88.9%	27	55.6%
	Hispanic	118	54.2%	116	65.5%	116	79.3%	116	47.4%
	All Students	216	56.0%	214	65.9%	214	80.8%	214	45.8%

**Florida College Entry-Level Placement Test Results
Passed All Three Tests: 2006-2009**

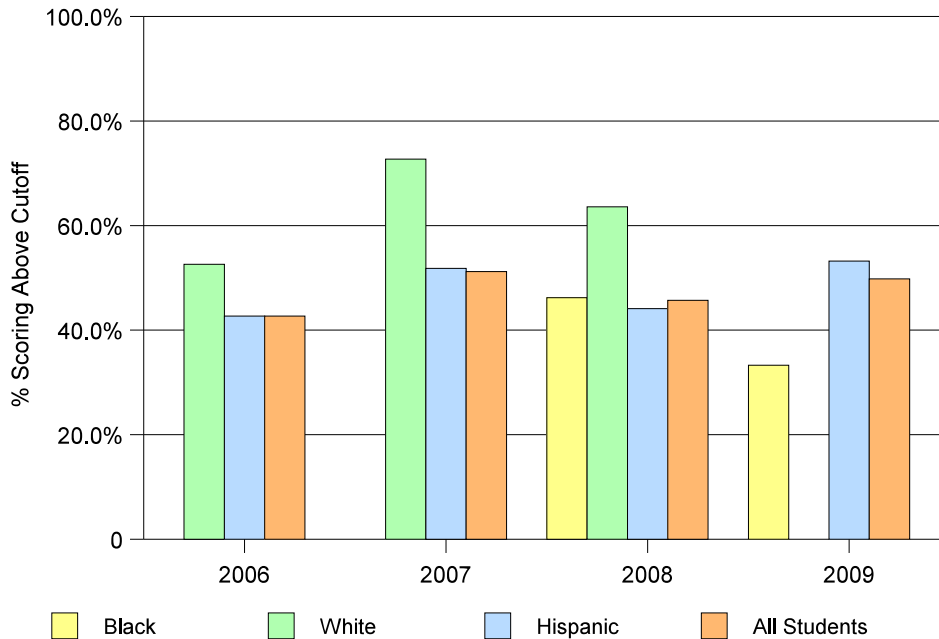


Readiness for College Results from the Florida College Placement Test 2006 - 2009

Blank cells indicate missing data

		Math		Reading		Writing		All 3 Subjects	
		# Tested	% scoring above cutoff	# Tested	% scoring above cutoff	# Tested	% scoring above cutoff	# Tested	% scoring above cutoff
Miami Springs									
2009	Black	12	41.7%	12	58.3%	12	66.7%	12	33.3%
	White								
	Hispanic	244	57.0%	245	66.5%	241	74.7%	241	53.2%
	All Students	282	56.4%	283	67.5%	279	73.5%	279	49.8%
2008	Black	27	48.1%	26	61.5%	26	61.5%	26	46.2%
	White	11	63.6%	11	90.9%	11	90.9%	11	63.6%
	Hispanic	333	54.7%	335	65.7%	333	72.1%	333	44.1%
	All Students	388	55.7%	389	67.1%	387	72.1%	387	45.7%
2007	Black								
	White	11	81.8%	11	81.8%	11	100.0%	11	72.7%
	Hispanic	255	64.3%	256	75.0%	256	78.1%	255	51.8%
	All Students	293	62.8%	294	74.1%	294	78.2%	293	51.2%
2006	Black								
	White	19	52.6%	19	73.7%	19	84.2%	19	52.6%
	Hispanic	227	52.4%	227	63.9%	227	78.0%	227	42.7%
	All Students	281	52.7%	281	64.8%	281	76.5%	281	42.7%

Florida College Entry-Level Placement Test Results
Passed All Three Tests: 2006-2009

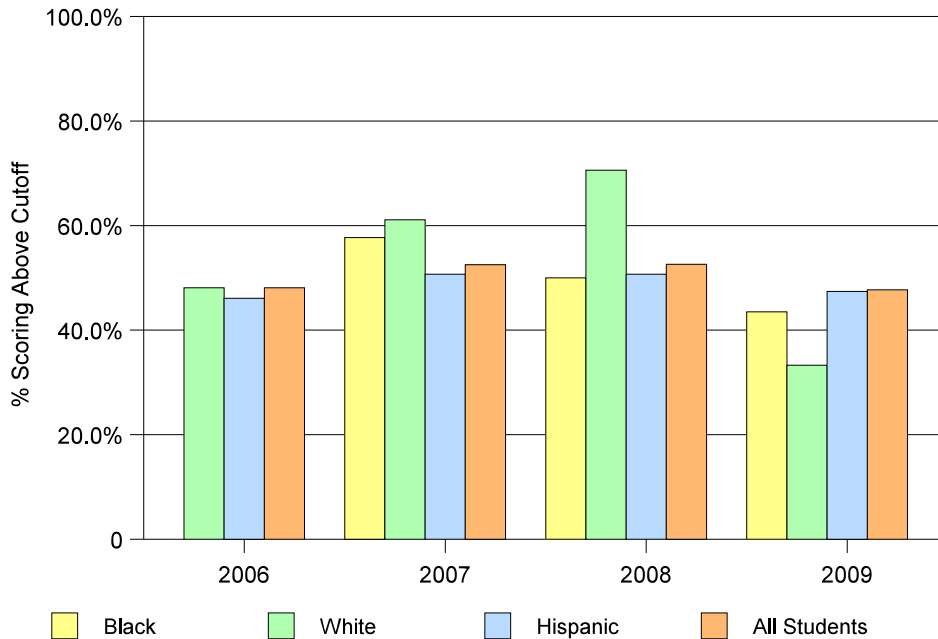


Readiness for College Results from the Florida College Placement Test 2006 - 2009

Blank cells indicate missing data

		Math		Reading		Writing		All 3 Subjects	
		# Tested	% scoring above cutoff	# Tested	% scoring above cutoff	# Tested	% scoring above cutoff	# Tested	% scoring above cutoff
Miami Sunset									
2009	Black	23	60.9%	23	56.5%	23	60.9%	22	43.5%
	White	18	55.6%	18	72.2%	18	66.7%	18	33.3%
	Hispanic	372	57.0%	372	69.9%	373	74.8%	371	47.4%
	All Students	436	58.0%	436	69.3%	437	73.7%	434	47.7%
2008	Black	14	50.0%	14	57.1%	14	71.4%	14	50.0%
	White	34	79.4%	34	91.2%	34	91.2%	34	70.6%
	Hispanic	376	59.3%	378	71.2%	376	81.1%	375	50.7%
	All Students	448	61.2%	450	72.7%	448	81.7%	447	52.6%
2007	Black	26	73.1%	26	76.9%	26	76.9%	26	57.7%
	White	36	66.7%	37	81.1%	37	86.5%	36	61.1%
	Hispanic	339	60.5%	340	72.4%	340	79.7%	339	50.7%
	All Students	417	62.1%	419	73.5%	419	80.4%	417	52.5%
2006	Black								
	White	52	59.6%	52	75.0%	52	78.8%	52	48.1%
	Hispanic	359	55.2%	359	67.4%	359	286.0%	358	46.1%
	All Students	438	57.1%	439	69.7%	439	80.4%	437	48.1%

**Florida College Entry-Level Placement Test Results
Passed All Three Tests: 2006-2009**

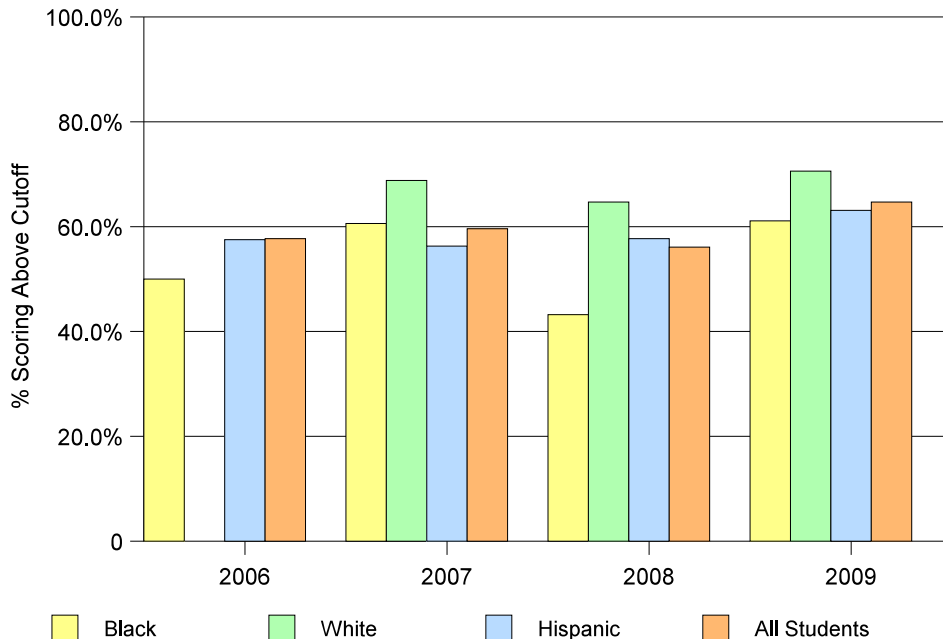


Readiness for College Results from the Florida College Placement Test 2006 - 2009

Blank cells indicate missing data

		Math		Reading		Writing		All 3 Subjects	
		# Tested	% scoring above cutoff	# Tested	% scoring above cutoff	# Tested	% scoring above cutoff	# Tested	% scoring above cutoff
Robert Morgan Educational Center									
2009	Black	54	74.1%	54	79.6%	54	81.5%	54	61.1%
	White	51	70.6%	51	88.2%	51	94.1%	51	70.6%
	Hispanic	198	68.2%	198	80.3%	198	88.4%	198	63.1%
	All Students	312	70.2%	312	81.7%	312	88.5%	312	64.7%
2008	Black	88	53.4%	88	73.9%	88	79.5%	88	43.2%
	White	68	72.1%	68	80.9%	68	85.3%	68	64.7%
	Hispanic	209	69.4%	208	76.0%	208	84.1%	208	57.7%
	All Students	388	66.0%	387	77.0%	387	84.0%	387	56.1%
2007	Black	71	67.6%	71	80.3%	71	83.1%	71	60.6%
	White	64	76.6%	64	84.4%	64	90.6%	64	68.8%
	Hispanic	222	65.3%	222	74.8%	222	82.0%	222	56.3%
	All Students	369	67.8%	369	77.5%	369	84.0%	369	59.6%
2006	Black	16	56.2%	16	68.8%	16	93.8%	16	50.0%
	White								
	Hispanic	88	61.4%	87	83.9%	87	87.4%	87	57.5%
	All Students	124	61.3%	123	81.3%	123	87.0%	123	57.7%

**Florida College Entry-Level Placement Test Results
Passed All Three Tests: 2006-2009**

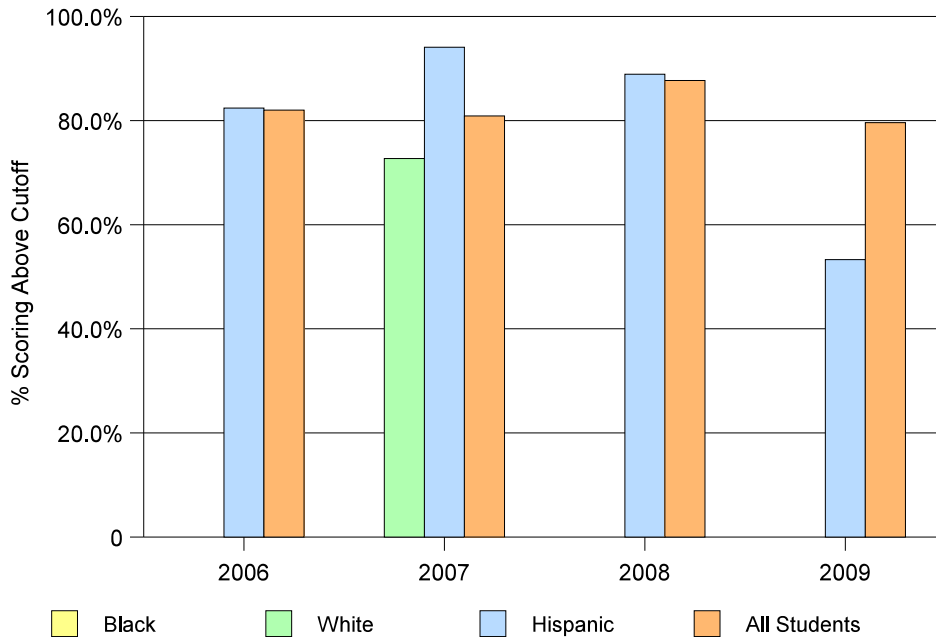


**Readiness for College
Results from the Florida College Placement Test
2006 - 2009**

Blank cells indicate missing data

		Math		Reading		Writing		All 3 Subjects	
		# Tested	% scoring above cutoff	# Tested	% scoring above cutoff	# Tested	% scoring above cutoff	# Tested	% scoring above cutoff
New World School of the Arts									
2009	Black								
	White								
	Hispanic	30	90.0%	30	96.7%	30	100.0%	30	53.3%
	All Students	49	81.6%	49	93.9%	49	93.9%	49	79.6%
2008	Black								
	White								
	All Students	27	88.9%	27	96.3%	27	96.3%	27	88.9%
2007	Black								
	White								
	All Students	57	87.7%	57	94.7%	57	96.5%	57	87.7%
2006	Black								
	White								
	Hispanic	11	72.7%	11	100.0%	11	100.0%	11	72.7%
	All Students	47	83.0%	47	91.5%	47	93.6%	47	80.9%
2006	Black								
	White								
	Hispanic	17	82.4%	17	88.2%	17	94.1%	17	82.4%
	All Students	50	82.0%	51	92.2%	51	94.1%	50	82.0%

**Florida College Entry-Level Placement Test Results
Passed All Three Tests: 2006-2009**

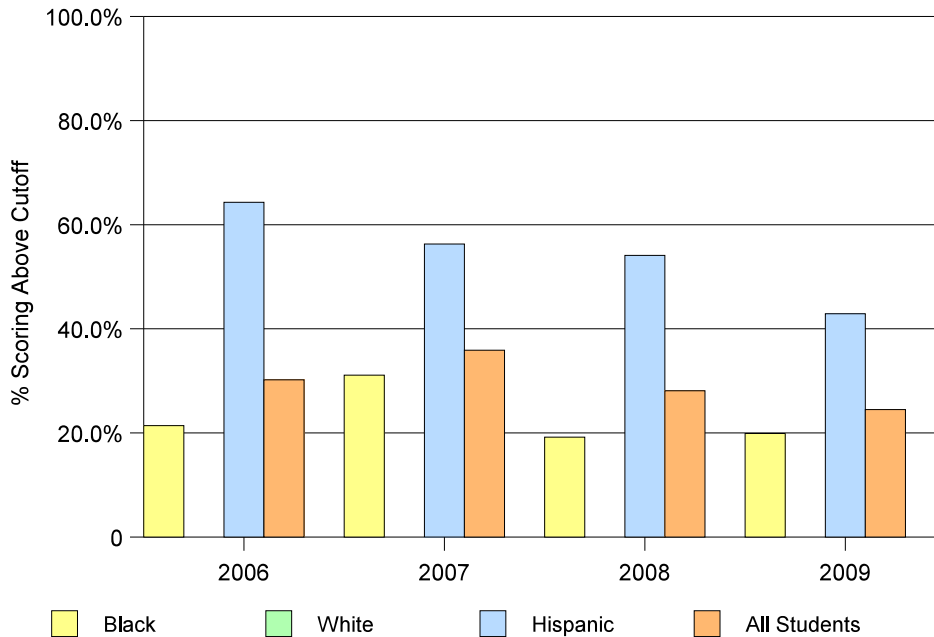


Readiness for College Results from the Florida College Placement Test 2006 - 2009

Blank cells indicate missing data

			Math		Reading		Writing		All 3 Subjects	
			# Tested	% scoring above cutoff	# Tested	% scoring above cutoff	# Tested	% scoring above cutoff	# Tested	% scoring above cutoff
North Miami										
2009	Black		182	25.8%	181	47.0%	181	47.0%	181	19.9%
	White									
	Hispanic		31	58.1%	31	80.6%	31	80.6%	31	42.9%
	All Students		217	30.9%	216	51.9%	216	51.9%	216	24.5%
2008	Black		172	26.7%	173	45.1%	172	53.5%	172	19.2%
	White									
	Hispanic		37	62.2%	37	64.9%	37	70.3%	37	54.1%
	All Students		221	35.7%	222	50.5%	221	58.8%	221	28.1%
2007	Black		219	40.6%	220	53.6%	220	59.5%	219	31.1%
	White									
	Hispanic		32	62.5%	32	68.8%	32	87.5%	32	56.3%
	All Students		273	45.1%	274	57.7%	274	63.9%	273	35.9%
2006	Black		159	36.5%	161	50.9%	161	58.4%	159	21.4%
	White									
	Hispanic		28	67.9%	28	82.1%	28	89.3%	28	64.3%
	All Students		212	42.5%	214	57.0%	214	64.5%	212	30.2%

**Florida College Entry-Level Placement Test Results
Passed All Three Tests: 2006-2009**

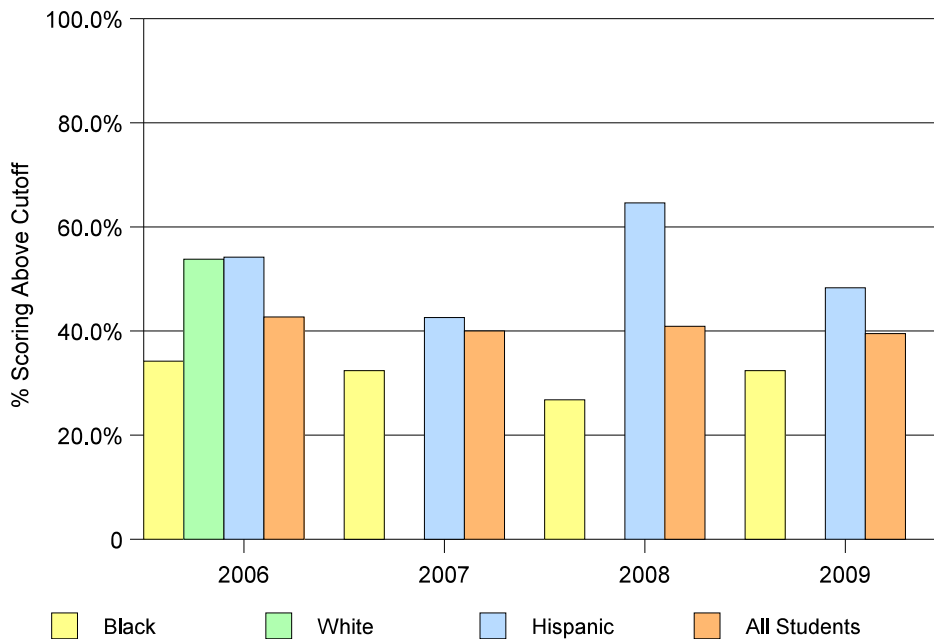


Readiness for College Results from the Florida College Placement Test 2006 - 2009

Blank cells indicate missing data

		Math		Reading		Writing		All 3 Subjects	
		# Tested	% scoring above cutoff	# Tested	% scoring above cutoff	# Tested	% scoring above cutoff	# Tested	% scoring above cutoff
North Miami Beach									
2009	Black	213	44.6%	214	58.4%	213	61.0%	213	32.4%
	White								
	Hispanic	58	58.6%	59	71.2%	59	69.5%	58	48.3%
	All Students	299	50.5%	301	63.5%	300	64.7%	299	39.5%
2008	Black	154	31.2%	154	59.1%	153	62.1%	153	26.8%
	White								
	Hispanic	48	75.0%	48	75.0%	48	77.1%	48	64.6%
	All Students	234	46.2%	233	66.5%	232	68.1%	232	40.9%
2007	Black	176	46.6%	176	52.3%	176	64.1%	176	32.4%
	White								
	Hispanic	54	48.1%	54	68.5%	54	66.7%	54	42.6%
	All Students	260	50.8%	260	59.6%	260	65.4%	260	40.0%
2006	Black	149	46.3%	149	57.7%	149	66.4%	149	34.2%
	White	13	69.2%	13	61.5%	13	69.2%	13	53.8%
	Hispanic	48	58.3%	48	70.8%	48	81.3%	48	54.2%
	All Students	232	52.6%	232	62.9%	232	72.0%	232	42.7%

**Florida College Entry-Level Placement Test Results
Passed All Three Tests: 2006-2009**

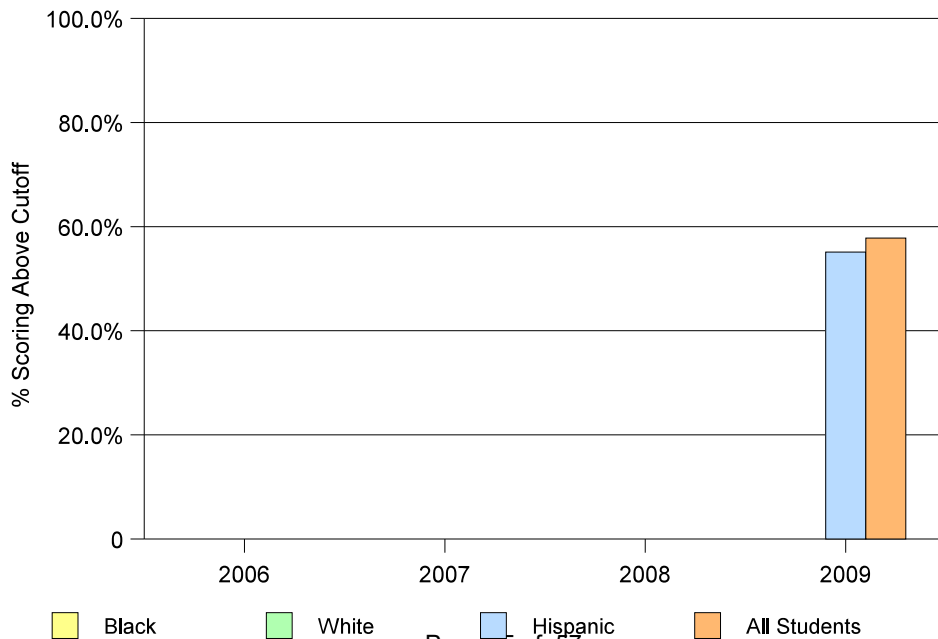


Readiness for College Results from the Florida College Placement Test 2006 - 2009

Blank cells indicate missing data

		Math		Reading		Writing		All 3 Subjects	
		# Tested	% scoring above cutoff	# Tested	% scoring above cutoff	# Tested	% scoring above cutoff	# Tested	% scoring above cutoff
Ronald W. Reagan/Doral									
2009	Black								
	White								
	Hispanic	234	63.2%	234	79.3%	234	79.5%	234	55.1%
	All Students	256	65.2%	256	75.4%	256	80.5%	256	57.8%
2008	Black								
	White								
	Hispanic								
	All Students								
2007	Black								
	White								
	Hispanic								
	All Students								
2006	Black								
	White								
	Hispanic								
	All Students								

**Florida College Entry-Level Placement Test Results
Passed All Three Tests: 2006-2009**

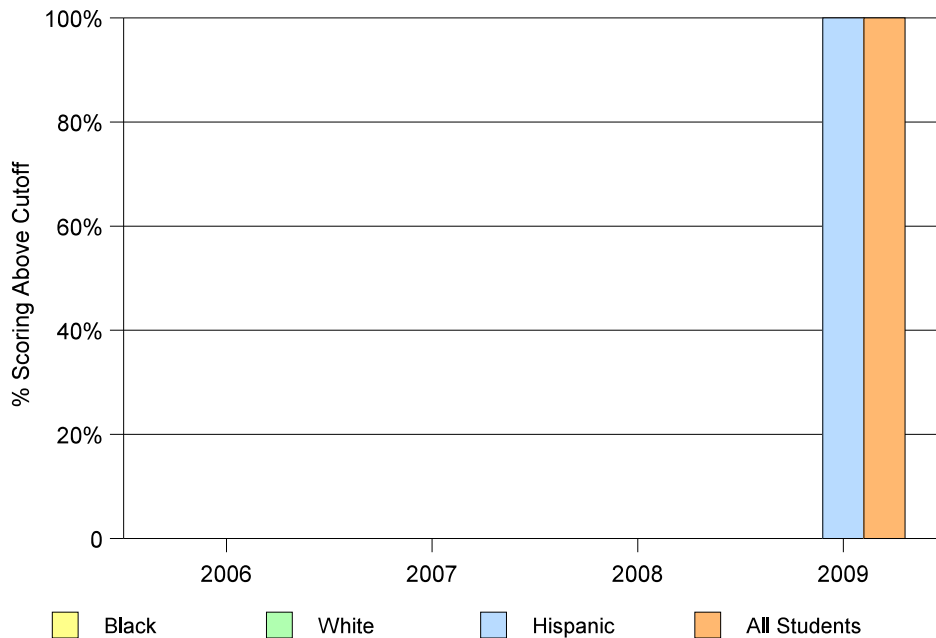


Readiness for College Results from the Florida College Placement Test 2006 - 2009

Blank cells indicate missing data

		Math		Reading		Writing		All 3 Subjects	
		# Tested	% scoring above cutoff	# Tested	% scoring above cutoff	# Tested	% scoring above cutoff	# Tested	% scoring above cutoff
School/Adv. Studies, Homestead									
2009	Black								
	White								
	Hispanic	36	100.0%	36	100.0%	36	100.0%	36	100.0%
	All Students	47	100.0%	47	100.0%	47	100.0%	47	100.0%
2008	Black								
	White								
	Hispanic								
	All Students								
2007	Black								
	White								
	Hispanic								
	All Students								
2006	Black								
	White								
	Hispanic								
	All Students								

Florida College Entry-Level Placement Test Results
Passed All Three Tests: 2006-2009

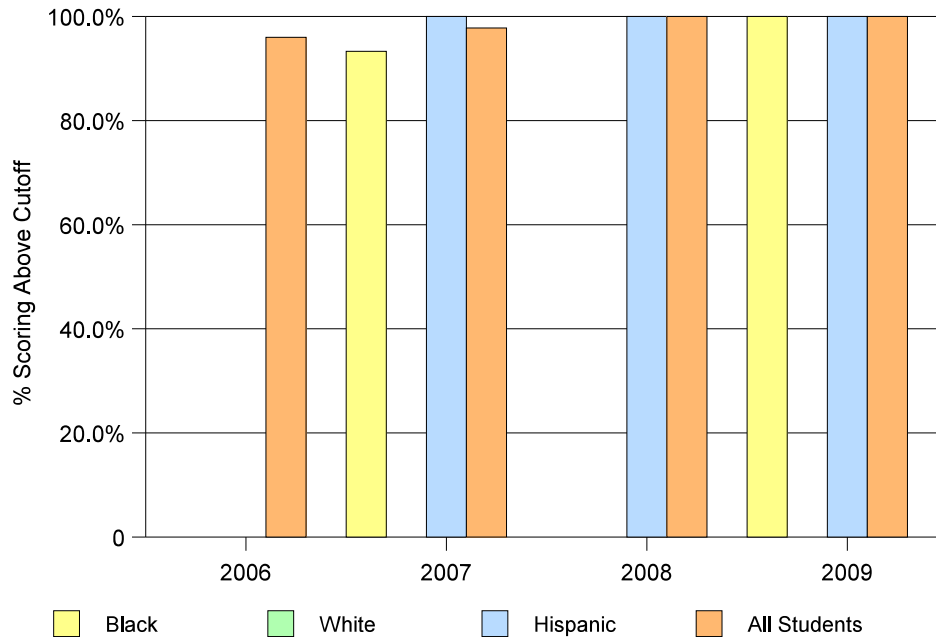


Readiness for College Results from the Florida College Placement Test 2006 - 2009

Blank cells indicate missing data

		Math		Reading		Writing		All 3 Subjects	
		# Tested	% scoring above cutoff	# Tested	% scoring above cutoff	# Tested	% scoring above cutoff	# Tested	% scoring above cutoff
School/Adv. Studies, North									
2009	Black	13	100.0%	13	100.0%	13	100.0%	13	100.0%
	White								
	Hispanic	13	100.0%	13	100.0%	13	100.0%	13	100.0%
	All Students	39	100.0%	39	100.0%	39	100.0%	39	100.0%
2008	Black								
	White								
	Hispanic	12	100.0%	12	100.0%	12	100.0%	12	100.0%
	All Students	33	100.0%	33	100.0%	33	100.0%	33	100.0%
2007	Black	15	93.3%	15	100.0%	15	100.0%	15	93.3%
	White								
	Hispanic	16	100.0%	16	100.0%	16	100.0%	16	100.0%
	All Students	46	97.8%	46	100.0%	46	100.0%	46	97.8%
2006	Black								
	White								
	Hispanic								
	All Students	25	96.0%	25	100.0%	25	100.0%	25	96.0%

**Florida College Entry-Level Placement Test Results
Passed All Three Tests: 2006-2009**

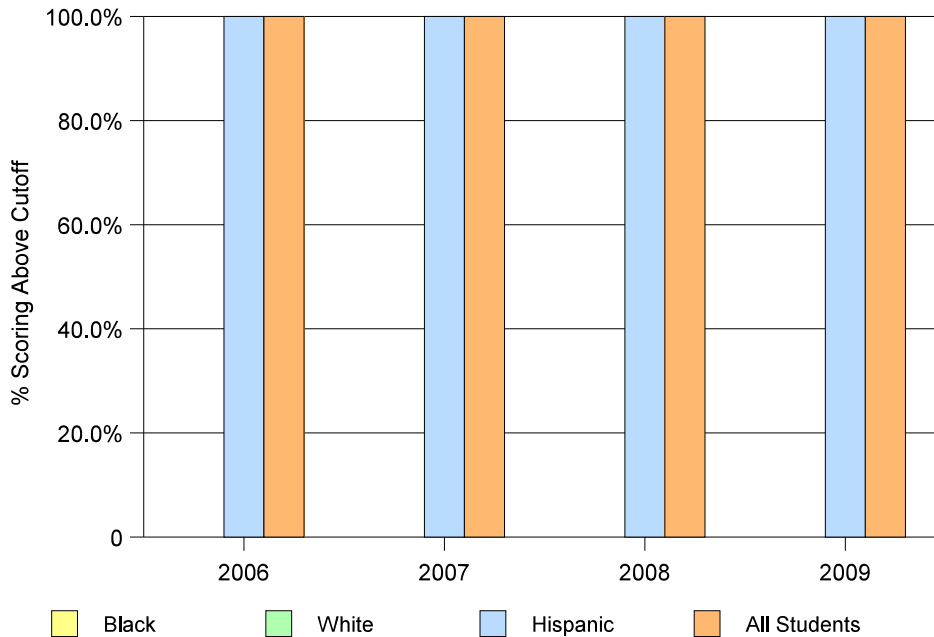


Readiness for College Results from the Florida College Placement Test 2006 - 2009

Blank cells indicate missing data

		Math		Reading		Writing		All 3 Subjects	
		# Tested	% scoring above cutoff	# Tested	% scoring above cutoff	# Tested	% scoring above cutoff	# Tested	% scoring above cutoff
School/Adv. Studies, South									
2009	Black								
	White								
	Hispanic	35	100.0%	35	100.0%	35	100.0%	35	100.0%
	All Students	68	100.0%	68	100.0%	68	100.0%	68	100.0%
2008	Black								
	White								
	Hispanic	45	100.0%	45	100.0%	45	100.0%	45	100.0%
	All Students	76	100.0%	76	100.0%	76	100.0%	76	100.0%
2007	Black								
	White								
	Hispanic	45	100.0%	45	100.0%	45	100.0%	45	100.0%
	All Students	67	100.0%	67	100.0%	67	100.0%	67	100.0%
2006	Black								
	White								
	Hispanic	45	100.0%	45	100.0%	45	100.0%	45	100.0%
	All Students	67	100.0%	67	100.0%	67	100.0%	67	100.0%

Florida College Entry-Level Placement Test Results
Passed All Three Tests: 2006-2009

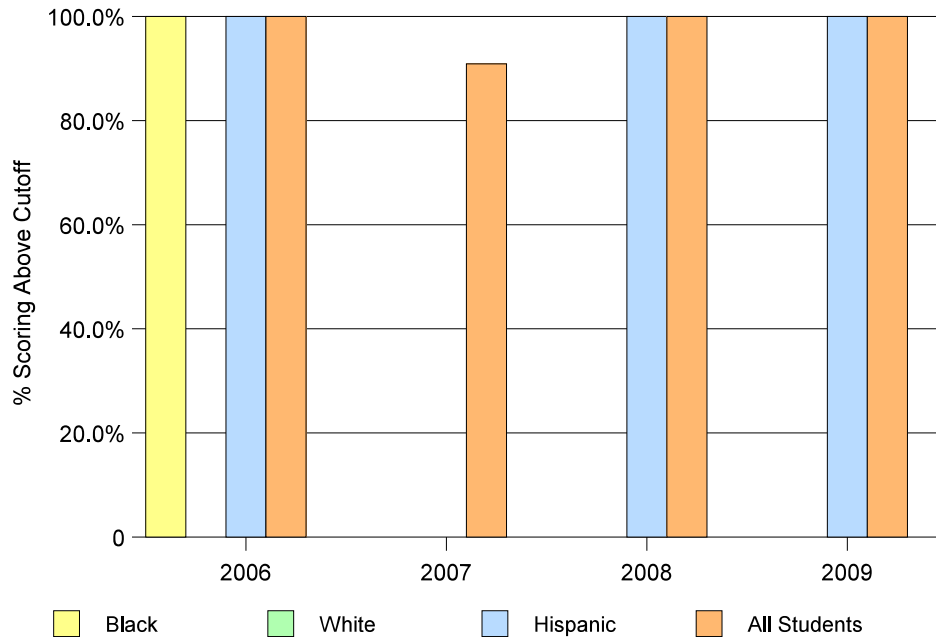


Readiness for College Results from the Florida College Placement Test 2006 - 2009

Blank cells indicate missing data

		Math		Reading		Writing		All 3 Subjects	
		# Tested	% scoring above cutoff	# Tested	% scoring above cutoff	# Tested	% scoring above cutoff	# Tested	% scoring above cutoff
School/Adv. Studies, Wolfson									
2009	Black								
	White								
	Hispanic	10	100.0%	10	100.0%	10	100.0%	10	100.0%
	All Students	26	100.0%	26	100.0%	26	100.0%	26	100.0%
2008	Black								
	White								
	Hispanic	10	100.0%	10	100.0%	10	100.0%	10	100.0%
	All Students	32	100.0%	32	100.0%	32	100.0%	32	100.0%
2007	Black								
	White								
	Hispanic								
	All Students	22	90.9%	22	100.0%	22	100.0%	22	90.9%
2006	Black	11	100.0%	11	100.0%	11	100.0%	11	100.0%
	White								
	Hispanic	17	100.0%	17	100.0%	17	100.0%	17	100.0%
	All Students	40	100.0%	40	100.0%	40	100.0%	40	100.0%

Florida College Entry-Level Placement Test Results
Passed All Three Tests: 2006-2009

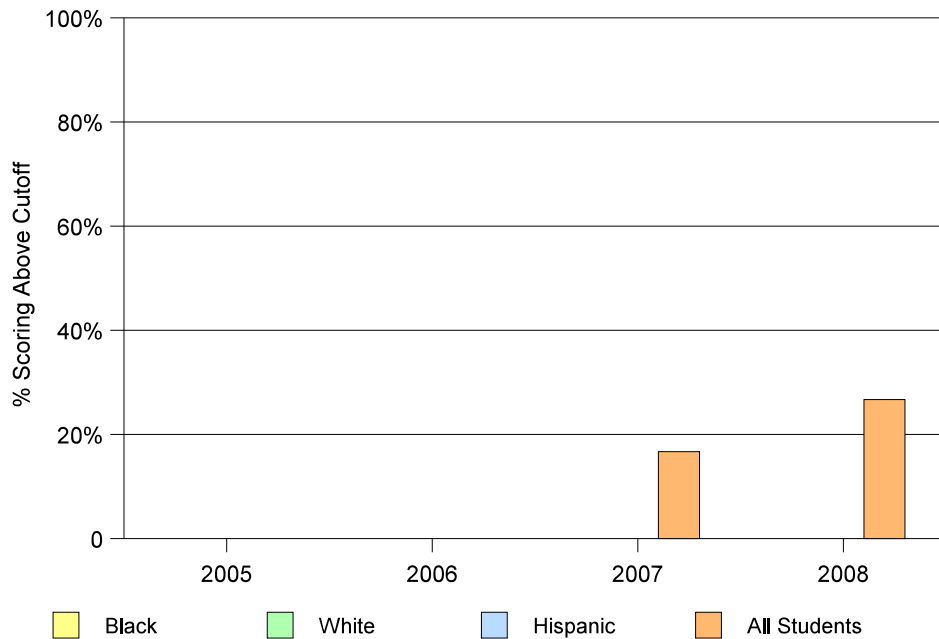


Readiness for College Results from the Florida College Placement Test 2006 - 2009

Blank cells indicate missing data

		Math		Reading		Writing		All 3 Subjects	
		# Tested	% scoring above cutoff	# Tested	% scoring above cutoff	# Tested	% scoring above cutoff	# Tested	% scoring above cutoff
School for Applied Technology									
2009	Black								
	White								
	Hispanic								
	All Students								
2008	Black								
	White								
	Hispanic								
	All Students	15	40.0%	15	53.3%	15	60.0%	15	26.7%
2007	Black								
	White								
	Hispanic								
	All Students	12	33.3%	12	25.0%	12	58.3%	12	16.7%
2006	Black								
	White								
	Hispanic								
	All Students								

**Florida College Entry-Level Placement Test Results
Passed All Three Tests: 2005-2008**

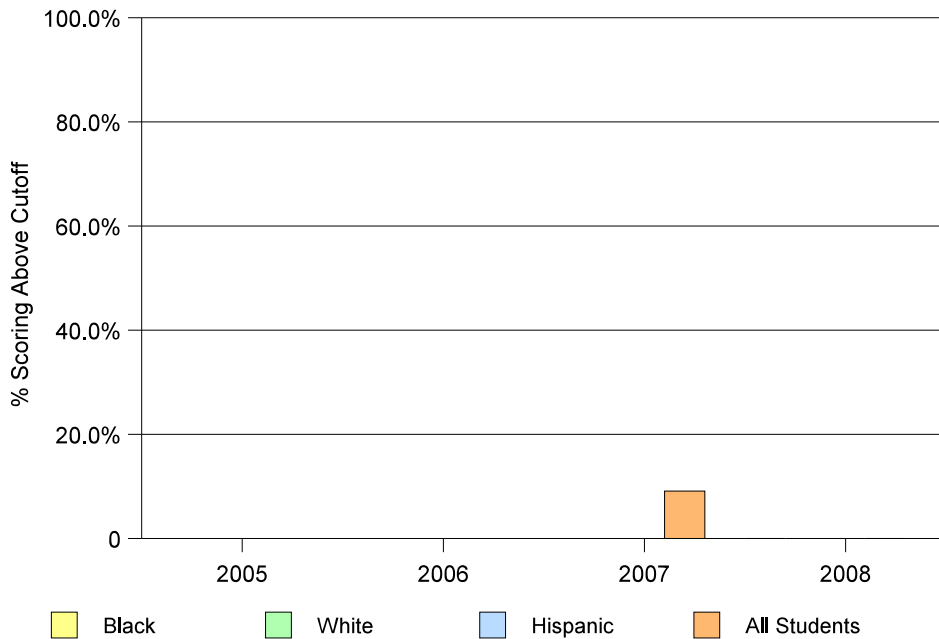


Readiness for College
Results from the Florida College Placement Test
2006 - 2009

Blank cells indicate missing data

		Math		Reading		Writing		All 3 Subjects	
		# Tested	% scoring above cutoff	# Tested	% scoring above cutoff	# Tested	% scoring above cutoff	# Tested	% scoring above cutoff
School for Integrated Academies and Technology									
2009	Black								
	White								
	Hispanic								
	All Students	18	22.2%	19	36.8%	19	36.8%	18	22.2%
2008	Black	12	0.0%	12	8.3%	12	25.0%	12	0.0%
	White								
	Hispanic								
	All Students	19	0.0%	19	15.8%	19	31.6%	19	0.0%
2007	Black								
	White								
	Hispanic								
	All Students	11	18.2%	11	36.4%	11	36.4%	11	9.1%
2006	Black								
	White								
	Hispanic								
	All Students								

Florida College Entry-Level Placement Test Results
Passed All Three Tests: 2005-2008

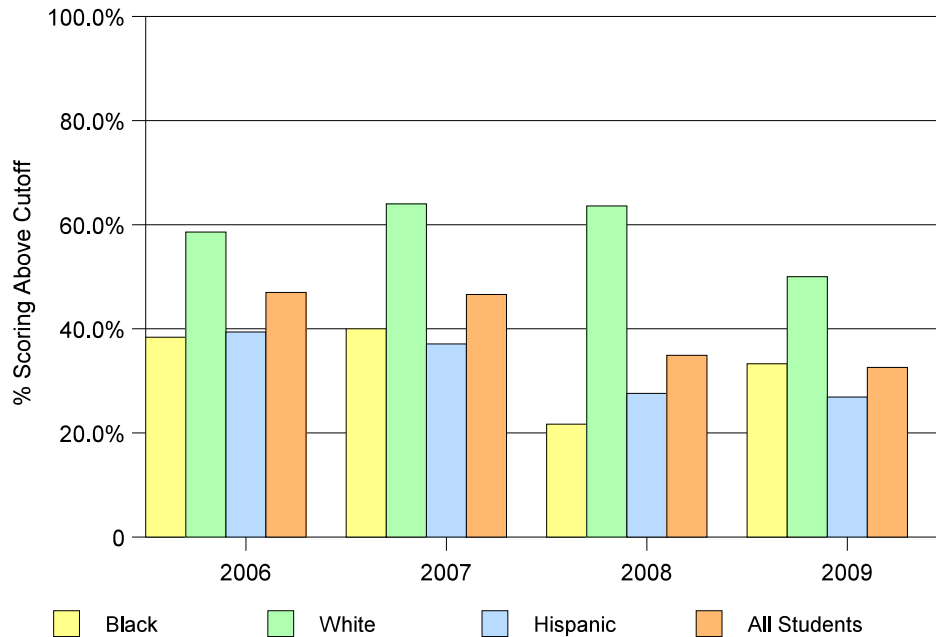


Readiness for College Results from the Florida College Placement Test 2006 - 2009

Blank cells indicate missing data

		Math		Reading		Writing		All 3 Subjects	
		# Tested	% scoring above cutoff	# Tested	% scoring above cutoff	# Tested	% scoring above cutoff	# Tested	% scoring above cutoff
South Dade									
2009	Black	33	33.3%	33	66.7%	33	63.6%	33	33.3%
	White	38	55.3%	38	76.3%	38	76.9%	38	50.0%
	Hispanic	108	30.6%	108	58.3%	108	66.7%	108	26.9%
	All Students	181	35.9%	181	64.1%	181	69.1%	181	32.6%
2008	Black	23	34.8%	23	47.8%	23	52.2%	23	21.7%
	White	33	66.7%	33	84.8%	33	87.9%	33	63.6%
	Hispanic	87	35.6%	87	57.5%	87	67.8%	87	27.6%
	All Students	149	42.3%	149	61.7%	149	69.8%	149	34.9%
2007	Black	10	60.0%	10	70.0%	10	60.0%	10	40.0%
	White	50	70.0%	50	80.0%	50	82.0%	50	64.0%
	Hispanic	89	47.2%	89	65.2%	89	71.9%	89	37.1%
	All Students	163	55.2%	163	70.6%	163	74.2%	163	46.6%
2006	Black	23	34.8%	23	65.2%	23	65.2%	23	38.4%
	White	58	60.3%	58	91.4%	58	89.7%	58	58.6%
	Hispanic	94	45.7%	94	57.4%	94	75.5%	94	39.4%
	All Students	185	50.8%	185	70.8%	185	80.0%	185	47.0%

Florida College Entry-Level Placement Test Results
Passed All Three Tests: 2006-2009

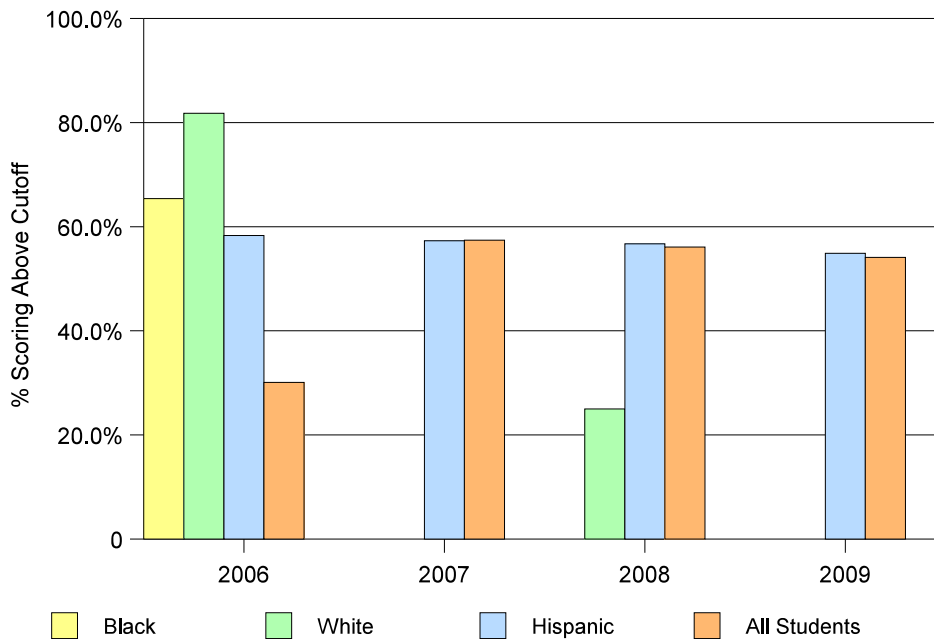


Readiness for College Results from the Florida College Placement Test 2006 - 2009

Blank cells indicate missing data

		Math		Reading		Writing		All 3 Subjects	
		# Tested	% scoring above cutoff	# Tested	% scoring above cutoff	# Tested	% scoring above cutoff	# Tested	% scoring above cutoff
South Miami									
2009	Black								
	White								
	Hispanic	270	65.9%	269	74.0%	264	82.2%	264	54.9%
	All Students	300	65.3%	299	74.6%	294	81.3%	294	54.1%
2008	Black								
	White	12	41.7%	12	75.0%	12	75.0%	12	25.0%
	Hispanic	261	67.8%	256	73.4%	254	81.1%	254	56.7%
	All Students	290	68.3%	289	73.0%	287	80.8%	287	56.1%
2007	Black								
	White								
	Hispanic	234	71.4%	234	71.8%	234	80.8%	234	57.3%
	All Students	256	72.7%	256	71.1%	256	80.5%	256	57.4%
2006	Black	11	81.8%	11	72.7%	11	72.7%	11	65.4%
	White	11	81.8%	11	90.9%	11	100.0%	11	81.8%
	Hispanic	268	74.6%	267	70.4%	267	86.9%	266	58.3%
	All Students	305	75.1%	304	72.4%	304	87.2%	303	60.1%

Florida College Entry-Level Placement Test Results
Passed All Three Tests: 2006-2009

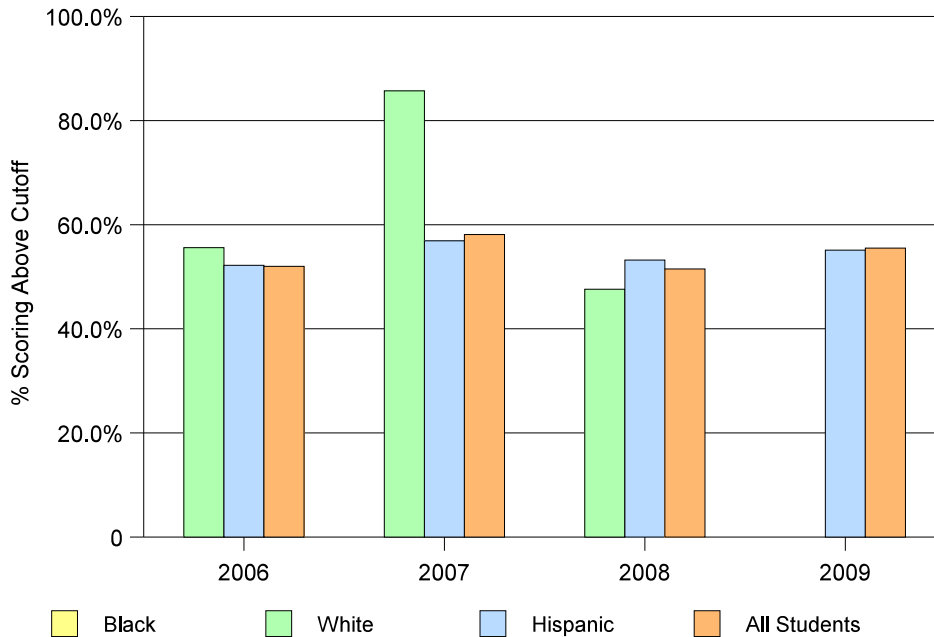


Readiness for College Results from the Florida College Placement Test 2006 - 2009

Blank cells indicate missing data

		Math		Reading		Writing		All 3 Subjects	
		# Tested	% scoring above cutoff	# Tested	% scoring above cutoff	# Tested	% scoring above cutoff	# Tested	% scoring above cutoff
Southwest Miami									
2009	Black								
	White								
	Hispanic	383	64.0%	386	72.5%	386	76.9%	382	55.1%
	All Students	412	64.6%	415	72.8%	415	77.3%	411	55.5%
2008	Black								
	White	21	47.6%	21	71.4%	21	76.2%	21	47.6%
	Hispanic	386	64.0%	386	66.6%	388	74.0%	376	53.2%
	All Students	429	63.2%	429	67.4%	431	74.5%	429	51.5%
2007	Black								
	White	21	85.7%	21	95.2%	21	95.2%	21	85.7%
	Hispanic	311	67.8%	311	70.4%	311	81.0%	311	56.9%
	All Students	346	67.9%	346	71.4%	346	81.2%	346	58.1%
2006	Black								
	White	27	63.0%	27	74.1%	27	85.2%	27	55.6%
	Hispanic	368	66.0%	369	64.2%	369	78.0%	368	52.2%
	All Students	417	65.7%	418	64.6%	418	78.0%	417	52.0%

Florida College Entry-Level Placement Test Results
Passed All Three Tests: 2006-2009

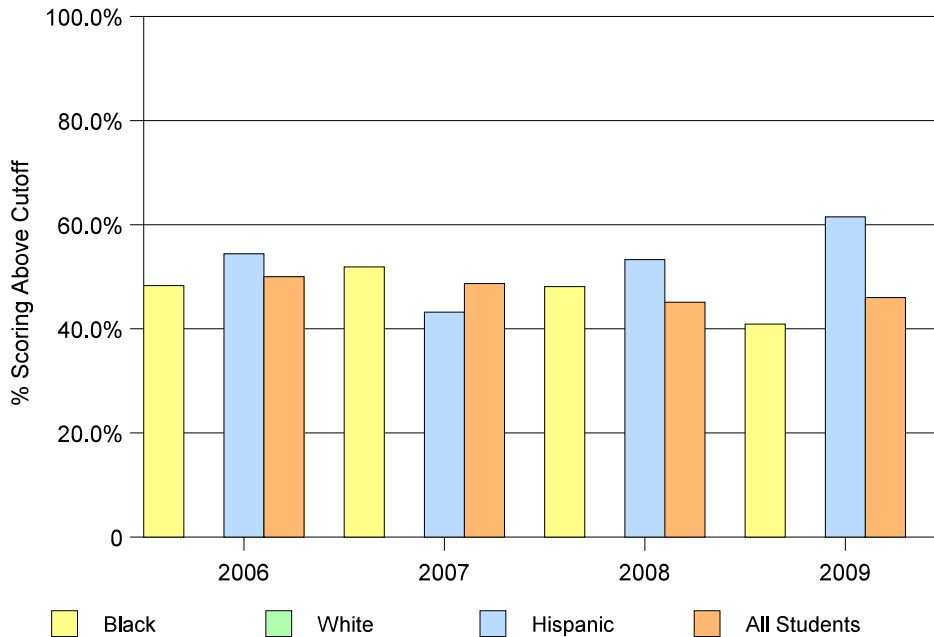


Readiness for College Results from the Florida College Placement Test 2006 - 2009

Blank cells indicate missing data

		Math		Reading		Writing		All 3 Subjects	
		# Tested	% scoring above cutoff	# Tested	% scoring above cutoff	# Tested	% scoring above cutoff	# Tested	% scoring above cutoff
Wm. Turner Tech. Arts									
2009	Black	181	49.2%	181	65.7%	181	71.8%	181	40.9%
	White								
	Hispanic	52	63.5%	52	92.3%	52	94.2%	52	61.5%
	All Students	237	52.7%	237	71.7%	237	76.8%	237	46.0%
2008	Black	154	48.1%	154	74.0%	154	80.5%	154	48.1%
	White								
	Hispanic	75	58.7%	75	70.7%	75	85.3%	75	53.3%
	All Students	237	51.1%	237	72.2%	237	82.3%	237	45.1%
2007	Black	154	62.3%	154	76.0%	154	77.3%	154	51.9%
	White								
	Hispanic	74	56.8%	74	73.0%	74	81.1%	74	43.2%
	All Students	238	59.7%	238	74.8%	238	77.7%	238	48.7%
2006	Black	145	56.6%	145	73.8%	145	80.0%	145	48.3%
	White								
	Hispanic	79	62.0%	79	74.7%	79	79.7%	79	54.4%
	All Students	230	57.8%	230	74.3%	230	80.4%	230	50.0%

Florida College Entry-Level Placement Test Results
Passed All Three Tests: 2006-2009

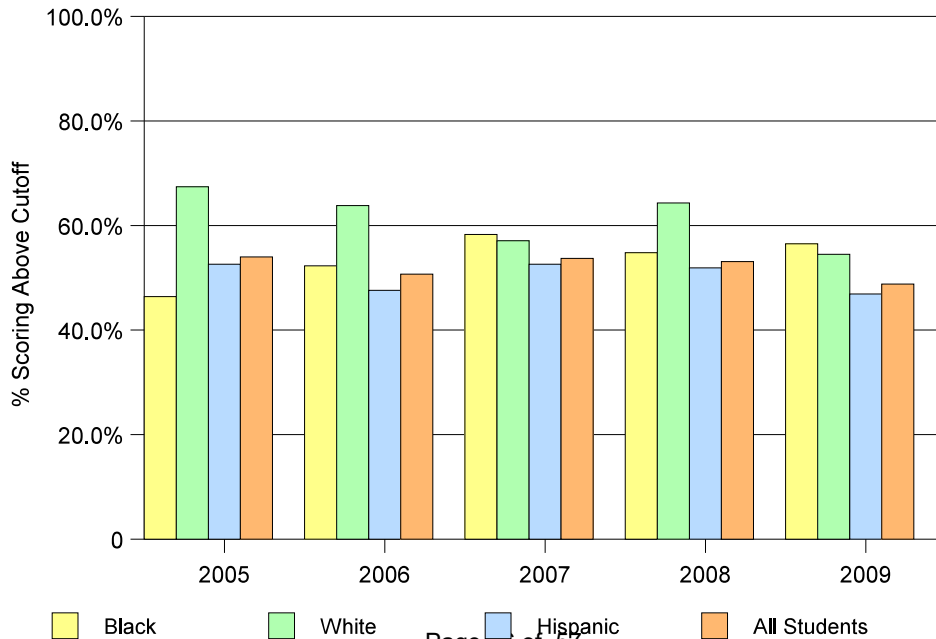


Readiness for College Results from the Florida College Placement Test 2006 - 2009

Blank cells indicate missing data

		Math		Reading		Writing		All 3 Subjects	
		# Tested	% scoring above cutoff	# Tested	% scoring above cutoff	# Tested	% scoring above cutoff	# Tested	% scoring above cutoff
Felix Varela									
2009	Black	23	73.9%	23	78.3%	23	73.9%	23	56.5%
	White	33	57.6%	33	78.8%	33	81.8%	33	54.5%
	Hispanic	403	53.6%	402	73.6%	402	78.1%	401	46.9%
	All Students	473	55.0%	472	74.6%	472	78.6%	471	48.8%
2008	Black	31	64.5%	31	77.4%	31	87.1%	31	54.8%
	White	29	65.5%	28	85.7%	28	89.3%	28	64.3%
	Hispanic	393	58.3%	394	72.8%	394	81.0%	393	51.9%
	All Students	479	59.3%	479	73.7%	479	81.6%	478	53.1%
2007	Black	12	66.7%	12	66.7%	12	75.0%	12	58.3%
	White	42	59.5%	42	85.7%	42	83.3%	42	57.1%
	Hispanic	466	58.4%	467	72.8%	467	81.4%	466	52.6%
	All Students	555	59.3%	556	73.6%	556	81.5%	555	53.7%
2006	Black	44	61.4%	44	68.2%	44	84.1%	44	52.3%
	White	48	70.8%	47	80.9%	47	89.4%	47	63.8%
	Hispanic	464	54.3%	465	75.3%	465	84.1%	464	47.6%
	All Students	583	57.5%	583	75.8%	583	84.7%	582	50.7%

**Florida College Entry-Level Placement Test Results
Passed All Three Tests: 2006-2009**



Readiness for College Results from the Florida College Placement Test 2006 - 2009

Blank cells indicate missing data

		Math		Reading		Writing		All 3 Subjects	
		# Tested	% scoring above cutoff	# Tested	% scoring above cutoff	# Tested	% scoring above cutoff	# Tested	% scoring above cutoff
Booker T. Washington									
2009	Black	64	31.3%	64	48.4%	64	46.9%	64	23.4%
	White								
	Hispanic	40	37.5%	40	50.0%	40	62.5%	40	35.0%
	All Students	106	33.0%	106	50.0%	106	52.8%	106	27.4%
2008	Black	34	47.1%	34	58.8%	34	61.8%	34	32.4%
	White								
	Hispanic	30	40.0%	30	43.3%	30	63.3%	30	26.7%
	All Students	65	43.1%	65	50.8%	65	61.5%	65	29.2%
2007	Black	32	12.5%	32	31.3%	21	37.5%	32	9.4%
	White								
	Hispanic	40	40.0%	40	55.0%	40	57.5%	40	32.5%
	All Students	75	29.3%	75	45.3%	75	48.0%	75	22.7%
2006	Black	26	30.8%	25	36.0%	25	60.0%	25	20.0%
	White								
	Hispanic	15	20.0%	15	33.3%	15	60.0%	15	20.0%
	All Students	51	31.4%	50	38.0%	50	60.0%	50	20.0%

Florida College Entry-Level Placement Test Results
Passed All Three Tests: 2006-2009

