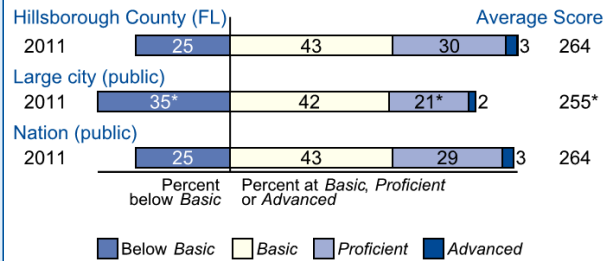


**Overall Results**

- In 2011, the average score of eighth-grade students in Hillsborough County was 264. This was higher than the average score of 255 for public school students in large cities.
- The percentage of students in Hillsborough County who performed at or above the NAEP *Proficient* level was 32 percent in 2011. This percentage was greater than large cities (23 percent).
- The percentage of students in Hillsborough County who performed at or above the NAEP *Basic* level was 75 percent in 2011. This percentage was greater than large cities (65 percent).

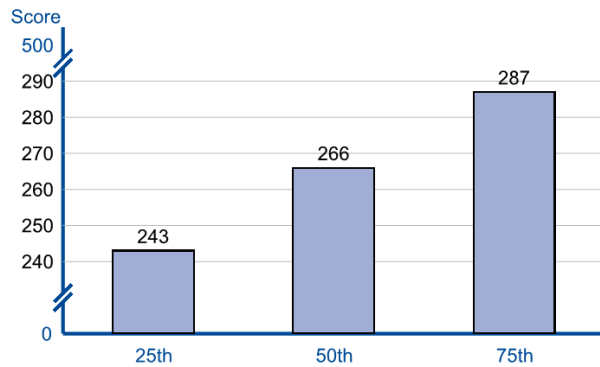
**Achievement-Level Percentages and Average Score Results**



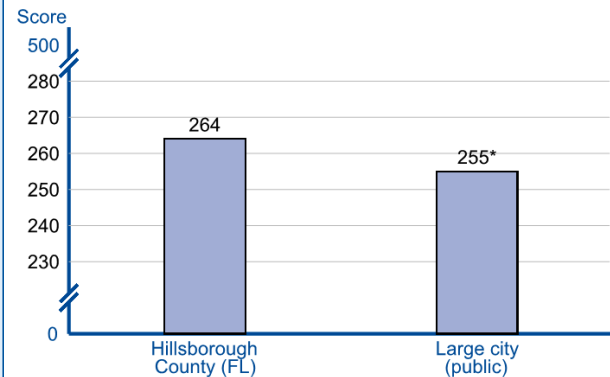
\* Significantly different ( $p < .05$ ) from Hillsborough County. Significance tests were performed using unrounded numbers.

NOTE: Detail may not sum to totals because of rounding. Large city (public) includes public schools located in the urbanized areas of cities with populations of 250,000 or more.

**Scores at Selected Percentiles**



**Average Scores for District and Large Cities**



\* Significantly different ( $p < .05$ ) from Hillsborough County. Significance tests were performed using unrounded numbers.

NOTE: Large city (public) includes public schools located in the urbanized areas of cities with populations of 250,000 or more.

**Results for Student Groups in 2011**

Reporting Groups	Percent of students	Avg. score	Percentages at or above		Percent at Advanced
			Basic	Proficient	
<b>School Race</b>					
White	43	276	86	45	4
Black	19	247	56	12	1
Hispanic	31	258	70	24	1
Asian	3	‡	‡	‡	‡
American Indian/Alaska Native	#	‡	‡	‡	‡
Native Hawaiian/Pacific Islander	#	‡	‡	‡	‡
Two or more races	3	‡	‡	‡	‡
<b>Gender</b>					
Male	50	260	70	28	2
Female	50	269	80	37	4
<b>National School Lunch Program</b>					
Eligible	54	254	66	20	1
Not eligible	46	276	86	47	4

# Rounds to zero.

‡ Reporting standards not met.

NOTE: Detail may not sum to totals because of rounding, and because the "Information not available" category for the National School Lunch Program, which provides free/reduced-price lunches is not displayed. Black includes African American and Hispanic includes Latino. Race categories exclude Hispanic origin.

**Score Gaps for Student Groups**

- In 2011, Black students had an average score that was 29 points lower than White students. This performance gap was not significantly different from large cities (28 points).
- In 2011, Hispanic students had an average score that was 17 points lower than White students. This performance gap was narrower than large cities (25 points).
- In 2011, female students in Hillsborough County had an average score that was higher than male students by 9 points.
- In 2011, students who were eligible for free/reduced-price school lunch, an indicator of low family income, had an average score that was 22 points lower than students who were not eligible for free/reduced-price school lunch. This performance gap was not significantly different from large cities (23 points).