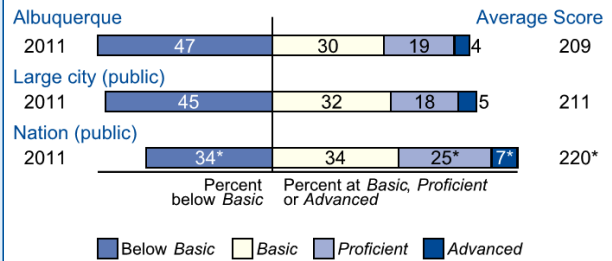


Overall Results

- In 2011, the average score of fourth-grade students in Albuquerque was 209. This was not significantly different from the average score of 211 for public school students in large cities.
- The percentage of students in Albuquerque who performed at or above the NAEP *Proficient* level was 24 percent in 2011. This percentage was not significantly different from large cities (24 percent).
- The percentage of students in Albuquerque who performed at or above the NAEP *Basic* level was 53 percent in 2011. This percentage was not significantly different from large cities (55 percent).

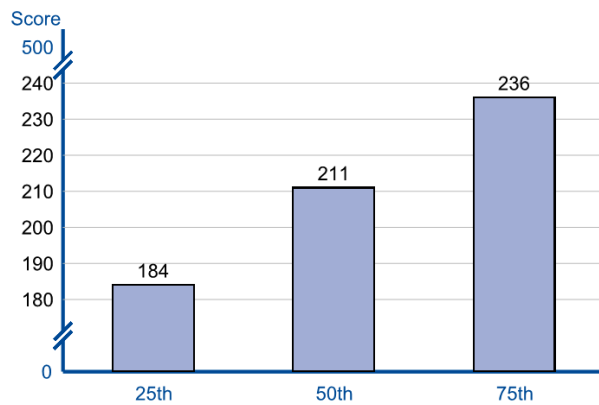
Achievement-Level Percentages and Average Score Results



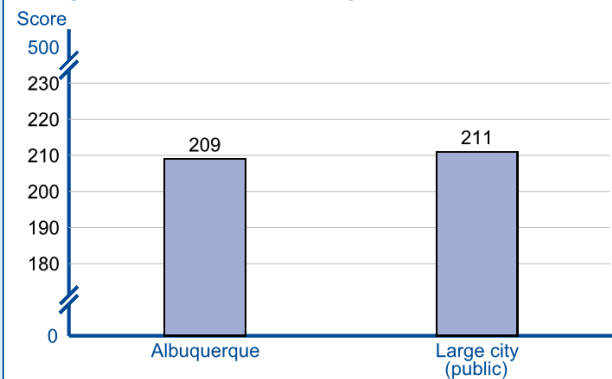
* Significantly different (p < .05) from Albuquerque. Significance tests were performed using unrounded numbers.

NOTE: Detail may not sum to totals because of rounding. Large city (public) includes public schools located in the urbanized areas of cities with populations of 250,000 or more.

Scores at Selected Percentiles



Average Scores for District and Large Cities



NOTE: Large city (public) includes public schools located in the urbanized areas of cities with populations of 250,000 or more.

Results for Student Groups in 2011

Reporting Groups	Percent of students	Avg. score	Percentages at or above		Percent at Advanced
			Basic	Proficient	
School Race					
White	24	231	77	44	11
Black	2	‡	‡	‡	‡
Hispanic	64	201	44	16	2
Asian	3	‡	‡	‡	‡
American Indian/Alaska Native	4	195	43	11	1
Native Hawaiian/Pacific Islander	#	‡	‡	‡	‡
Two or more races	2	‡	‡	‡	‡
Gender					
Male	52	207	51	23	4
Female	48	211	56	25	5
National School Lunch Program					
Eligible	65	197	40	14	1
Not eligible	35	230	78	43	10

Rounds to zero.

‡ Reporting standards not met.

NOTE: Detail may not sum to totals because of rounding, and because the "Information not available" category for the National School Lunch Program, which provides free/reduced-price lunches is not displayed. Black includes African American and Hispanic includes Latino. Race categories exclude Hispanic origin.

Score Gaps for Student Groups

- Data are not reported for Black students in 2011, because reporting standards were not met.
- In 2011, Hispanic students had an average score that was 30 points lower than White students. This performance gap was not significantly different from large cities (29 points).
- In 2011, female students in Albuquerque had an average score that was not significantly different from male students.
- In 2011, students who were eligible for free/reduced-price school lunch, an indicator of low family income, had an average score that was 33 points lower than students who were not eligible for free/reduced-price school lunch. This performance gap was not significantly different from large cities (28 points).