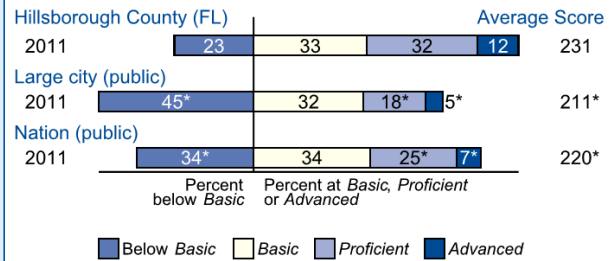


Overall Results

- In 2011, the average score of fourth-grade students in Hillsborough County was 231. This was higher than the average score of 211 for public school students in large cities.
- The percentage of students in Hillsborough County who performed at or above the NAEP *Proficient* level was 44 percent in 2011. This percentage was greater than large cities (24 percent).
- The percentage of students in Hillsborough County who performed at or above the NAEP *Basic* level was 77 percent in 2011. This percentage was greater than large cities (55 percent).

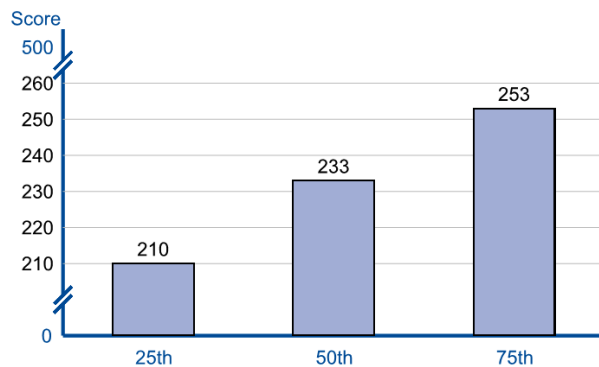
Achievement-Level Percentages and Average Score Results



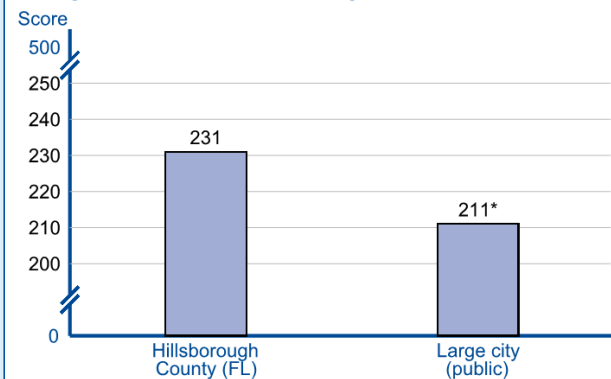
* Significantly different ($p < .05$) from Hillsborough County. Significance tests were performed using unrounded numbers.

NOTE: Detail may not sum to totals because of rounding. Large city (public) includes public schools located in the urbanized areas of cities with populations of 250,000 or more.

Scores at Selected Percentiles



Average Scores for District and Large Cities



* Significantly different ($p < .05$) from Hillsborough County. Significance tests were performed using unrounded numbers.

NOTE: Large city (public) includes public schools located in the urbanized areas of cities with populations of 250,000 or more.

Results for Student Groups in 2011

Reporting Groups	Percent of students	Avg. score	Percentages at or above		Percent at Advanced
			Basic	Proficient	
School Race					
White	37	242	88	59	18
Black	20	218	66	26	4
Hispanic	35	223	69	33	7
Asian	3	‡	‡	‡	‡
American Indian/Alaska Native	#	‡	‡	‡	‡
Native Hawaiian/Pacific Islander	#	‡	‡	‡	‡
Two or more races	4	‡	‡	‡	‡
Gender					
Male	50	227	73	40	10
Female	50	235	81	48	14
National School Lunch Program					
Eligible	57	219	66	28	4
Not eligible	42	247	91	65	23

Rounds to zero.

‡ Reporting standards not met.

NOTE: Detail may not sum to totals because of rounding, and because the "Information not available" category for the National School Lunch Program, which provides free/reduced-price lunches is not displayed. Black includes African American and Hispanic includes Latino. Race categories exclude Hispanic origin.

Score Gaps for Student Groups

- In 2011, Black students had an average score that was 24 points lower than White students. This performance gap was not significantly different from large cities (30 points).
- In 2011, Hispanic students had an average score that was 19 points lower than White students. This performance gap was narrower than large cities (29 points).
- In 2011, female students in Hillsborough County had an average score that was higher than male students by 8 points.
- In 2011, students who were eligible for free/reduced-price school lunch, an indicator of low family income, had an average score that was 28 points lower than students who were not eligible for free/reduced-price school lunch. This performance gap was not significantly different from large cities (28 points).