

2011

MARCH  
QUARTER

# APPRENTICES & TRAINEES

Australian vocational  
education & training  
statistics



NCVER



Australian Government

Department of Education, Employment  
and Workplace Relations



# Australian vocational education and training statistics

## Apprentices and trainees

March quarter

# 2011

### Highlights

There were 458 900 apprentices and trainees in-training as at 31 March 2011, an increase of 5.3% from the previous year.

In the 12 months to 31 March 2011, compared with the previous year:

- commencements increased by 11.5%, to 315 500
- completions increased by 4.8%, to 169 700
- cancellations and withdrawals increased by 8.7%, to 134 400.

For seasonally adjusted data, comparing the March quarter 2011 with the December quarter 2010:

- commencements in trades occupations decreased by 3.4%
- commencements in non-trades occupations remained stable
- completions remained stable
- cancellations and withdrawals increased by 0.9%
- in-training numbers increased by 0.5%.



**Australian Government**

**Department of Education, Employment  
and Workplace Relations**

---

© Commonwealth of Australia, 2011

This work has been produced by the National Centre for Vocational Education Research (NCVER) on behalf of the Australian Government and state and territory governments, with funding provided through the Australian Government Department of Education, Employment and Workplace Relations. Apart from any use permitted under the *Copyright Act 1968*, no part of this publication may be reproduced by any process without written permission. Requests should be made to NCVER.

The views and opinions expressed in this document are those of NCVER and do not necessarily reflect the views of the Australian Government or state and territory governments.

ISSN 1440-0359

TD/TNC 104.21

Cataloguing title:

*Australian vocational education and training statistics: Apprentices and trainees 2011—March quarter*

Comments and suggestions regarding this publication are welcomed and should be forwarded to NCVER.

Published by NCVER

ABN 87 007 967 311

Level 11, 33 King William Street, Adelaide SA 5000

PO Box 8288, Station Arcade, Adelaide SA 5000, Australia

Phone: (08) 8230 8400

Fax: (08) 8212 3436

Web: <<http://www.ncver.edu.au>>

Email: <[ats\\_req@ncver.edu.au](mailto:ats_req@ncver.edu.au)>

---

# Contents

|                                   |    |
|-----------------------------------|----|
| Apprentice and trainee directions | 4  |
| Introduction                      | 4  |
| Overall trends                    | 4  |
| Seasonally adjusted data          | 4  |
| Tables                            | 6  |
| Terms                             | 18 |
| Technical notes                   | 19 |
| Data source                       | 19 |
| Estimation procedure              | 19 |
| Seasonal adjustments              | 19 |
| Notes on figures and tables       | 20 |

## Tables

|   |    |
|---|----|
| Quarterly training activity   | 6  |
| 1 In-training by state/territory and selected training characteristics, as at 31 March 2011 ('000)                  | 6  |
| 2 In-training by state/territory as at the end of each quarter, 2006–11 ('000)                                      | 6  |
| 3 Commencements by state/territory and selected training characteristics, March quarter 2011 ('000)                 | 7  |
| 4 Commencements in each quarter by state/territory, 2006–11 ('000)  | 7  |
| 5 Completions by state/territory and selected training characteristics, March quarter 2011 ('000)                   | 8  |
| 6 Completions in each quarter by state/territory, 2006–11 ('000)  | 8  |
| 7 Cancellations and withdrawals by state/territory and selected training characteristics, March quarter 2011 ('000) | 9  |
| 8 Cancellations and withdrawals in each quarter by state/territory, 2006–11 ('000)                                  | 9  |
| 9 In-training as at the end of each quarter by selected training characteristics, Australia, 2006–11 ('000)         | 10 |
| 10 Commencements in each quarter by selected training characteristics, Australia, 2006–11 ('000)                    | 10 |
| 11 Completions in each quarter by selected training characteristics, Australia, 2006–11 ('000)                      | 12 |
| 12 Cancellations and withdrawals in each quarter by selected training characteristics, Australia, 2006–11 ('000)    | 12 |
| 13 In-training in top 20 training packages by state/territory, as at 31 March 2011 ('000)                           | 14 |
| 14 Commencements in top 20 training packages by state/territory, March quarter 2011 ('000)                          | 14 |
| Training activity: 12-month ending series   | 15 |
| 15 Commencements by selected training characteristics, 12 months ending 31 March, Australia, 2006–11 ('000)         | 15 |
| 16 Completions by selected training characteristics, 12 months ending 31 March, Australia, 2006–11 ('000)           | 15 |
| 17 Commencements by occupation and state/territory, 12 months ending 31 March 2011 ('000)                           | 16 |
| 18 Commencements by industry skills councils, 12 months ending 31 March 2011, Australia ('000)                      | 17 |
| Seasonally adjusted commencements   | 17 |
| 19 Seasonally adjusted commencements in each quarter, by state/territory, 2006–11 ('000)                            | 17 |

## Figures

|   |   |
|---|---|
| 1 In-training, seasonally adjusted, 2001–11 ('000)  | 5 |
| 2 Commencements, completions and cancellations/withdrawals, seasonally adjusted, 2001–11 ('000) | 5 |
| 3 Trades and non-trades commencements, seasonally adjusted, 2001–11 ('000)                      | 5 |

# Apprentice and trainee directions

## Introduction

This publication presents estimates of apprentice and trainee activity in Australia for the March quarter 2011. The figures in this publication are derived from the National Apprentice and Trainee Collection no.68 (June 2011 estimates).

The most recent figures in this publication are estimated. (Those for training activity from the September quarter 2009 to the March quarter 2011.) Estimates take into account reporting lags that occur at the time of data collection. Consequently, the figures in this publication may differ from those published in earlier or later reports.

Estimated data are presented in this publication on a seasonally adjusted, quarterly and 12-month ending series basis. The 12-month ending series is particularly useful in showing longer-term data trends, but is less useful in identifying turning points.

The seasonally adjusted data involve the use of a mathematical model to smooth out fluctuations due to seasonal influences. Seasonally adjusted data are useful to illustrate trends from one quarter to the next, but cannot be further disaggregated.

Further details on the estimation methodology and seasonally adjusted data tables can be found at <http://www.ncver.edu.au/publications/2386.html>.

## Overall trends

### In-training

The number of apprentices and trainees in-training as at 31 March 2011 was 458 900, an increase of 5.3% from one year earlier.

### For the 12 months ending 31 March 2011

#### Commencements

The number of commencements in the 12 months ending 31 March 2011 was 315 500, an increase of 11.5% from one year earlier.

Of this:

- trades commencements increased by 9.2%
- non-trades commencements increased by 12.4%.

State and territory commencements in the 12 months to 31 March 2011, compared with the previous year, showed:

- |                           |  |
|---------------------------|--|
| ■ New South Wales (+9.3%) | ■ Western Australia (+13.6%)           |
| ■ Victoria (+17.6%)       | ■ Tasmania (+8.4%)                     |
| ■ Queensland (+10.2%)     | ■ Northern Territory (+4.0%)           |
| ■ South Australia (+4.7%) | ■ Australian Capital Territory (+0.2%) |

### Completions

The number of completions in the 12 months ending 31 March 2011 was 169 700, an increase of 4.8% from one year earlier.

### Cancellations and withdrawals

The number of cancellations and withdrawals in the 12 months ending 31 March 2011 was 134 400, an increase of 8.7% from one year earlier.

## Seasonally adjusted data

### In-training

The number of apprentices and trainees in-training has increased in every quarter since June 2009. Between 31 December 2010 and 31 March 2011, the number in-training increased by 0.5%.

### Commencements

The number of trades commencements has decreased by 3.4% between the December quarter 2010 and the March quarter 2011.

The number of non-trades commencements has increased in every quarter since March 2009 and December 2010, stabilising in the March quarter 2011.

### Completions

The number of completions has increased in each quarter between March 2006 and December 2010, stabilising in the March quarter 2011.

### Cancellations and withdrawals

The number of cancellations and withdrawals has increased in every quarter since September 2009. Between the December quarter 2010 and the March quarter 2011, cancellations and withdrawals increased by 0.9%.

---

For more information on seasonally adjusted data, see the technical notes on page 19.

Additional seasonally adjusted data tables are available at <http://www.ncver.edu.au/publications/2386.html>.

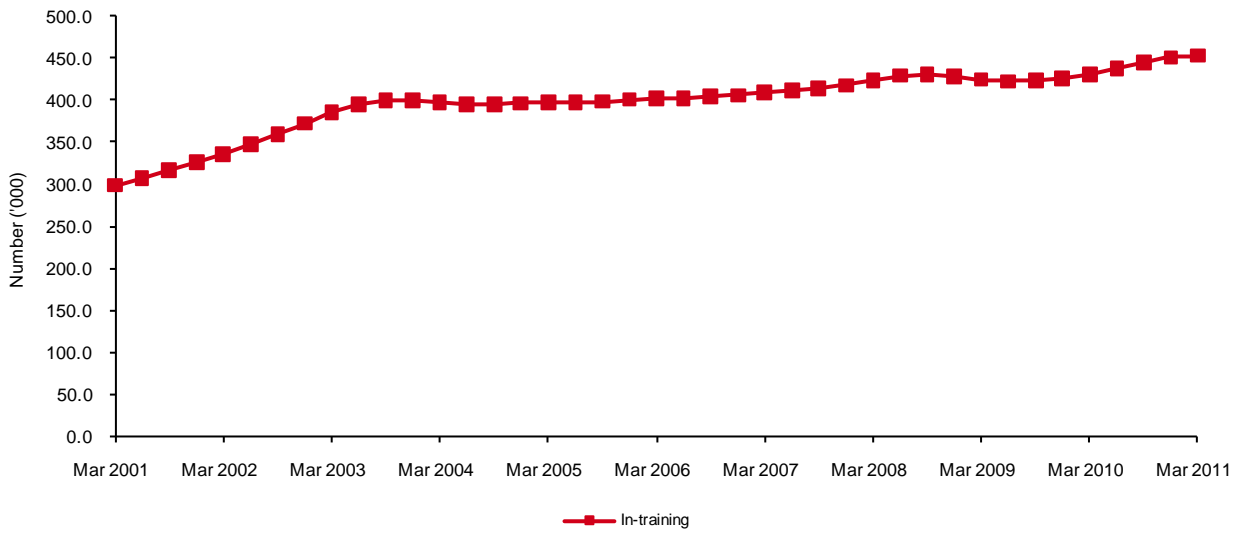
---

---

For more information on concepts and definitions used in this publication, see **Terms** listed on page 18.

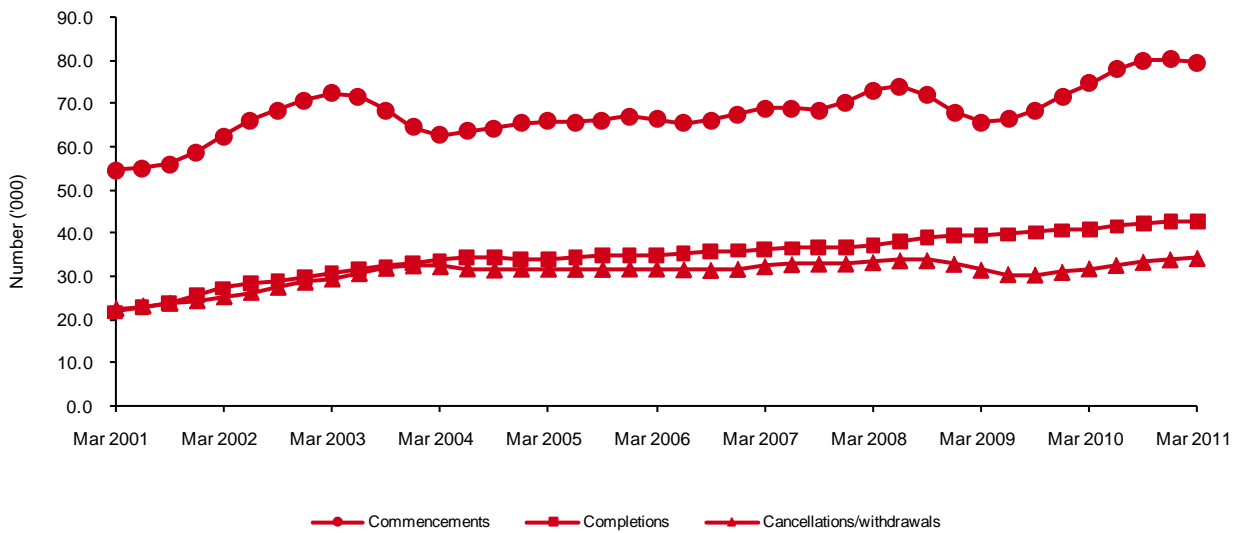
---

**Figure 1 In-training, seasonally adjusted,<sup>1</sup> 2001–11 ('000)**



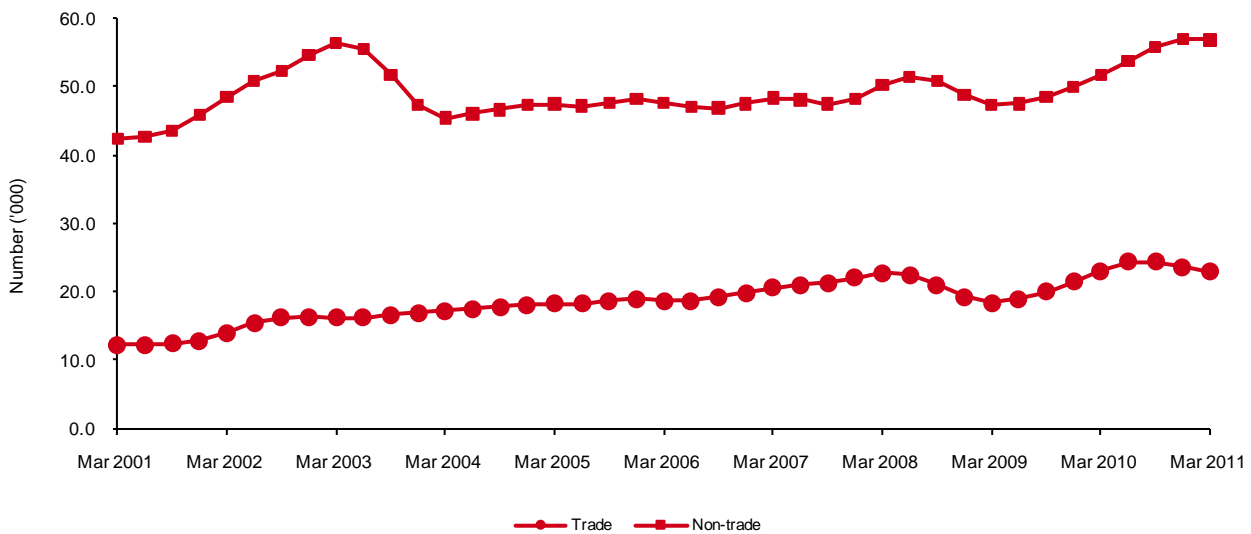
For notes on figures and tables, see page 20.

**Figure 2 Commencements, completions and cancellations/withdrawals,<sup>2</sup> seasonally adjusted,<sup>1</sup> 2001–11 ('000)**



For notes on figures and tables, see page 20.

**Figure 3 Trades and non-trades<sup>3,4</sup> commencements, seasonally adjusted,<sup>1</sup> 2001–11 ('000)**



For notes on figures and tables, see page 20.

# Tables

## Quarterly training activity

**Table 1 In-training by state/territory and selected training characteristics, as at 31 March 2011 ('000)**

|                                  |  | NSW   | Vic.  | Qld  | SA   | WA   | Tas. | NT  | ACT | Australia |
|----------------------------------|--|-------|-------|------|------|------|------|-----|-----|-----------|
| <b>Age</b>                       | 19 years and under                     | 38.1  | 35.1  | 32.7 | 9.5  | 14.7 | 3.7  | 1.3 | 2.2 | 137.5     |
|                                  | 20 to 24 years                         | 37.0  | 33.1  | 21.4 | 8.3  | 9.5  | 3.0  | 1.2 | 2.7 | 116.1     |
|                                  | 25 to 44 years                         | 49.1  | 33.7  | 29.5 | 10.9 | 11.3 | 4.0  | 1.7 | 2.2 | 142.4     |
|                                  | 45 years and over                      | 24.6  | 14.9  | 11.8 | 4.6  | 4.2  | 1.5  | 0.5 | 0.8 | 62.9      |
| <b>Sex</b>                       | Male                                   | 93.9  | 76.4  | 62.6 | 22.2 | 28.9 | 7.8  | 3.1 | 4.8 | 299.8     |
|                                  | Female                                 | 54.9  | 40.5  | 32.7 | 11.1 | 10.8 | 4.4  | 1.6 | 3.2 | 159.1     |
| <b>Occupation (ANZSCO) group</b> | Managers and professionals             | 4.7   | 6.5   | 7.2  | 2.5  | 1.0  | 0.8  | 0.2 | 0.8 | 23.5      |
|                                  | Technicians and trades workers         | 61.5  | 54.6  | 47.0 | 14.5 | 23.1 | 5.7  | 2.5 | 3.5 | 212.5     |
|                                  | Community and personal service workers | 19.1  | 14.6  | 7.7  | 2.0  | 4.1  | 1.3  | 0.7 | 1.7 | 51.2      |
|                                  | Clerical and administrative workers    | 27.9  | 14.9  | 14.4 | 5.8  | 3.3  | 1.6  | 0.5 | 0.9 | 69.4      |
|                                  | Sales workers                          | 14.9  | 12.9  | 8.7  | 4.1  | 2.2  | 1.4  | 0.3 | 0.5 | 45.2      |
|                                  | Machinery operators and drivers        | 12.5  | 5.5   | 5.8  | 2.8  | 3.2  | 0.6  | 0.3 | 0.2 | 31.0      |
|                                  | Labourers                              | 8.2   | 7.9   | 4.5  | 1.5  | 2.8  | 0.8  | 0.3 | 0.3 | 26.2      |
| <b>AQF qualification level</b>   | Certificate I or II                    | 8.9   | 6.5   | 7.0  | 3.0  | 3.3  | 1.1  | 0.5 | 0.5 | 30.8      |
|                                  | Certificate III                        | 103.2 | 87.0  | 66.4 | 22.9 | 30.3 | 8.6  | 3.7 | 5.6 | 327.7     |
|                                  | Certificate IV                         | 33.1  | 16.8  | 15.8 | 5.5  | 4.9  | 1.5  | 0.4 | 1.2 | 79.3      |
|                                  | Diploma/advanced diploma               | 3.5   | 6.6   | 6.1  | 1.9  | 1.2  | 1.0  | 0.1 | 0.7 | 21.2      |
| <b>Full-time status</b>          | Full-time                              | 116.5 | 85.3  | 68.8 | 25.3 | 35.0 | 9.4  | 4.0 | 5.8 | 350.0     |
|                                  | Part-time                              | 32.3  | 31.5  | 26.5 | 8.0  | 4.7  | 2.7  | 0.8 | 2.3 | 108.9     |
| <b>Total<sup>5</sup></b>         |  | 148.8 | 116.9 | 95.4 | 33.3 | 39.7 | 12.2 | 4.8 | 8.0 | 458.9     |

For notes on figures and tables, see page 20.

**Table 2 In-training by state/territory as at the end of each quarter, 2006–11 ('000)**

| Quarter        | NSW   | Vic.  | Qld  | SA   | WA   | Tas. | NT  | ACT | Australia |
|----------------|-------|-------|------|------|------|------|-----|-----|-----------|
| March 2006     | 125.3 | 113.6 | 81.0 | 33.9 | 31.5 | 12.9 | 3.2 | 6.6 | 408.1     |
| June 2006      | 123.0 | 110.9 | 82.3 | 33.5 | 32.1 | 12.6 | 3.2 | 6.7 | 404.4     |
| September 2006 | 124.3 | 110.1 | 84.2 | 33.0 | 32.2 | 12.5 | 3.2 | 6.6 | 406.1     |
| December 2006  | 124.0 | 105.1 | 81.0 | 32.7 | 31.7 | 12.3 | 3.0 | 6.2 | 395.9     |
| March 2007     | 129.2 | 107.6 | 87.8 | 32.4 | 33.9 | 12.8 | 3.3 | 6.9 | 413.8     |
| June 2007      | 128.5 | 107.4 | 89.7 | 31.5 | 34.3 | 12.8 | 3.3 | 6.7 | 414.2     |
| September 2007 | 130.7 | 106.9 | 91.4 | 31.7 | 34.7 | 13.0 | 3.3 | 6.7 | 418.4     |
| December 2007  | 130.4 | 100.9 | 87.2 | 30.2 | 34.0 | 12.7 | 3.2 | 6.2 | 404.7     |
| March 2008     | 136.8 | 105.6 | 93.3 | 31.4 | 36.2 | 13.3 | 3.6 | 6.9 | 427.0     |
| June 2008      | 139.3 | 107.2 | 95.2 | 32.0 | 36.7 | 13.4 | 3.7 | 6.8 | 434.4     |
| September 2008 | 140.7 | 107.4 | 94.3 | 32.2 | 36.9 | 13.1 | 3.8 | 6.7 | 434.9     |
| December 2008  | 137.3 | 102.4 | 87.7 | 31.2 | 35.8 | 12.2 | 3.5 | 5.9 | 416.0     |
| March 2009     | 140.7 | 104.9 | 90.8 | 31.7 | 37.3 | 12.4 | 3.8 | 6.7 | 428.3     |
| June 2009      | 139.5 | 105.0 | 89.8 | 32.1 | 36.8 | 12.2 | 3.9 | 6.7 | 425.8     |
| September 2009 | 139.4 | 105.4 | 90.2 | 31.9 | 36.4 | 12.0 | 4.0 | 6.9 | 426.2     |
| December 2009  | 138.3 | 101.5 | 86.1 | 30.6 | 35.3 | 11.3 | 3.8 | 6.5 | 413.5     |
| March 2010     | 144.5 | 106.3 | 91.8 | 32.6 | 37.2 | 12.1 | 4.2 | 7.1 | 435.9     |
| June 2010      | 145.0 | 108.4 | 93.2 | 33.1 | 37.6 | 12.1 | 4.3 | 7.2 | 441.1     |
| September 2010 | 147.2 | 111.8 | 94.9 | 33.2 | 37.6 | 12.3 | 4.4 | 7.4 | 448.9     |
| December 2010  | 146.1 | 109.2 | 91.4 | 32.6 | 37.6 | 11.7 | 4.1 | 7.3 | 440.0     |
| March 2011     | 148.8 | 116.9 | 95.4 | 33.3 | 39.7 | 12.2 | 4.8 | 8.0 | 458.9     |

For notes on figures and tables, see page 20.



**Table 3 Commencements by state/territory and selected training characteristics, March quarter 2011 ('000)**

|                                  |  | NSW  | Vic. | Qld  | SA  | WA  | Tas. | NT  | ACT | Australia |
|----------------------------------|--|------|------|------|-----|-----|------|-----|-----|-----------|
| <b>Age</b>                       | 19 years and under                     | 12.1 | 11.7 | 8.8  | 2.7 | 4.0 | 1.0  | 0.5 | 0.7 | 41.6      |
|                                  | 20 to 24 years                         | 5.2  | 4.7  | 2.5  | 1.1 | 1.3 | 0.3  | 0.2 | 0.4 | 15.9      |
|                                  | 25 to 44 years                         | 8.6  | 7.5  | 5.0  | 2.1 | 2.0 | 0.6  | 0.3 | 0.4 | 26.7      |
|                                  | 45 years and over                      | 3.4  | 3.4  | 2.1  | 0.8 | 0.7 | 0.2  | 0.1 | 0.1 | 11.0      |
| <b>Sex</b>                       | Male                                   | 17.5 | 15.4 | 11.0 | 4.1 | 5.3 | 1.3  | 0.7 | 0.9 | 56.3      |
|                                  | Female                                 | 11.8 | 12.0 | 7.5  | 2.5 | 2.9 | 1.0  | 0.4 | 0.8 | 38.9      |
| <b>Occupation (ANZSCO) group</b> | Managers and professionals             | 1.6  | 2.4  | 1.7  | 0.6 | 0.2 | 0.2  | 0.1 | 0.3 | 6.9       |
|                                  | Technicians and trades workers         | 10.5 | 8.3  | 7.2  | 2.4 | 3.9 | 0.8  | 0.5 | 0.6 | 34.0      |
|                                  | Community and personal service workers | 4.7  | 5.0  | 2.1  | 0.6 | 1.1 | 0.3  | 0.2 | 0.4 | 14.4      |
|                                  | Clerical and administrative workers    | 5.4  | 4.4  | 3.2  | 1.4 | 1.0 | 0.3  | 0.2 | 0.2 | 16.1      |
|                                  | Sales workers                          | 3.3  | 4.1  | 2.1  | 1.0 | 0.7 | 0.5  | 0.1 | 0.1 | 11.8      |
|                                  | Machinery operators and drivers        | 2.3  | 1.0  | 0.9  | 0.5 | 0.6 | 0.1  | 0.0 | 0.0 | 5.4       |
|                                  | Labourers                              | 1.6  | 2.2  | 1.4  | 0.3 | 0.7 | 0.1  | 0.1 | 0.0 | 6.5       |
| <b>AQF qualification level</b>   | Certificate I or II                    | 2.5  | 2.4  | 2.5  | 0.7 | 1.3 | 0.4  | 0.2 | 0.1 | 9.9       |
|                                  | Certificate III                        | 20.3 | 18.3 | 11.9 | 4.4 | 5.7 | 1.4  | 0.8 | 1.0 | 63.9      |
|                                  | Certificate IV                         | 5.0  | 4.2  | 2.6  | 1.1 | 1.1 | 0.3  | 0.1 | 0.3 | 14.6      |
|                                  | Diploma/advanced diploma               | 1.5  | 2.5  | 1.6  | 0.5 | 0.2 | 0.2  | 0.0 | 0.3 | 6.7       |
| <b>Full-time status</b>          | Full-time                              | 22.8 | 17.4 | 12.4 | 4.8 | 6.8 | 1.6  | 0.9 | 1.2 | 68.0      |
|                                  | Part-time                              | 6.5  | 9.9  | 6.1  | 1.9 | 1.3 | 0.6  | 0.2 | 0.5 | 27.1      |
| <b>Existing worker</b>           | Existing worker                        | 7.1  | 8.6  | 5.9  | 2.8 | 1.6 | 0.7  | 0.3 | 0.3 | 27.2      |
|                                  | Newly commencing worker                | 22.2 | 18.8 | 12.6 | 3.9 | 6.5 | 1.6  | 0.9 | 1.4 | 68.0      |
| <b>Total<sup>5</sup></b>         |  | 29.3 | 27.4 | 18.5 | 6.7 | 8.1 | 2.3  | 1.1 | 1.7 | 95.2      |

For notes on figures and tables, see page 20.

**Table 4 Commencements in each quarter by state/territory, 2006–11 ('000)**

| Quarter        | NSW  | Vic. | Qld  | SA  | WA  | Tas. | NT  | ACT | Australia |
|----------------|------|------|------|-----|-----|------|-----|-----|-----------|
| March 2006     | 25.9 | 22.8 | 18.4 | 6.6 | 6.9 | 2.4  | 0.8 | 1.8 | 85.7      |
| June 2006      | 15.6 | 18.2 | 13.5 | 4.4 | 5.2 | 1.7  | 0.5 | 1.3 | 60.4      |
| September 2006 | 17.4 | 17.9 | 13.5 | 4.7 | 4.9 | 1.8  | 0.6 | 1.2 | 61.9      |
| December 2006  | 17.6 | 16.0 | 12.1 | 4.6 | 4.9 | 1.8  | 0.4 | 1.1 | 58.5      |
| March 2007     | 27.1 | 21.7 | 19.7 | 6.5 | 7.4 | 2.4  | 0.8 | 1.7 | 87.4      |
| June 2007      | 17.1 | 17.6 | 15.6 | 4.8 | 5.2 | 1.9  | 0.5 | 1.0 | 63.7      |
| September 2007 | 19.6 | 17.7 | 15.1 | 5.3 | 5.4 | 1.9  | 0.6 | 1.2 | 66.8      |
| December 2007  | 18.3 | 14.7 | 12.5 | 4.1 | 5.1 | 1.8  | 0.5 | 0.9 | 57.9      |
| March 2008     | 28.8 | 22.4 | 19.8 | 7.0 | 7.8 | 2.7  | 0.9 | 1.8 | 91.1      |
| June 2008      | 22.3 | 18.6 | 17.2 | 5.4 | 6.0 | 2.1  | 0.7 | 1.1 | 73.3      |
| September 2008 | 20.8 | 18.1 | 13.5 | 5.0 | 5.7 | 1.8  | 0.6 | 1.0 | 66.6      |
| December 2008  | 18.1 | 16.0 | 10.6 | 4.6 | 5.4 | 1.7  | 0.4 | 0.8 | 57.7      |
| March 2009     | 27.1 | 20.6 | 16.9 | 6.0 | 7.0 | 2.2  | 0.8 | 1.8 | 82.3      |
| June 2009      | 18.4 | 17.2 | 12.9 | 5.2 | 5.3 | 1.7  | 0.6 | 1.1 | 62.5      |
| September 2009 | 19.6 | 17.9 | 13.6 | 4.8 | 5.3 | 1.7  | 0.7 | 1.2 | 64.9      |
| December 2009  | 20.2 | 16.8 | 12.4 | 4.2 | 5.4 | 1.4  | 0.6 | 0.9 | 61.8      |
| March 2010     | 29.9 | 23.8 | 19.1 | 7.7 | 8.1 | 2.6  | 0.9 | 1.7 | 93.9      |
| June 2010      | 21.6 | 19.9 | 15.5 | 5.5 | 6.2 | 1.9  | 0.6 | 1.1 | 72.3      |
| September 2010 | 23.4 | 21.9 | 15.9 | 5.3 | 6.3 | 2.1  | 0.7 | 1.2 | 76.7      |
| December 2010  | 22.2 | 19.9 | 14.0 | 5.4 | 6.7 | 1.9  | 0.5 | 0.9 | 71.4      |
| March 2011     | 29.3 | 27.4 | 18.5 | 6.7 | 8.1 | 2.3  | 1.1 | 1.7 | 95.2      |

For notes on figures and tables, see page 20.

**Table 5 Completions by state/territory and selected training characteristics, March quarter 2011 ('000)**

|                                    |  | NSW                 | Vic. | Qld | SA  | WA  | Tas. | NT  | ACT  | Australia |
|------------------------------------|--|---------------------|------|-----|-----|-----|------|-----|------|-----------|
| <b>Age</b>                         | 19 years and under                     | 2.1                 | 3.0  | 1.8 | 0.7 | 0.8 | 0.2  | 0.0 | 0.1  | 8.7       |
|                                    | 20 to 24 years                         | 6.1                 | 3.9  | 2.6 | 1.4 | 1.3 | 0.4  | 0.1 | 0.2  | 15.9      |
|                                    | 25 to 44 years                         | 4.8                 | 2.8  | 2.8 | 1.2 | 1.2 | 0.3  | 0.1 | 0.1  | 13.3      |
|                                    | 45 years and over                      | 2.5                 | 1.4  | 1.2 | 0.5 | 0.4 | 0.1  | 0.0 | 0.1  | 6.2       |
| <b>Sex</b>                         | Male                                   | 9.3                 | 6.1  | 5.2 | 2.3 | 2.4 | 0.6  | 0.2 | 0.2  | 26.2      |
|                                    | Female                                 | 6.3                 | 4.9  | 3.3 | 1.4 | 1.3 | 0.5  | 0.1 | 0.2  | 17.9      |
| <b>Occupation (ANZSCO) group</b>   | Managers and professionals             | 0.3                 | 0.3  | 0.3 | 0.3 | 0.1 | 0.0  | 0.0 | 0.0  | 1.4       |
|                                    | Technicians and trades workers         | 5.9                 | 3.5  | 3.5 | 1.3 | 1.7 | 0.3  | 0.1 | 0.1  | 16.4      |
|                                    | Community and personal service workers | 2.4                 | 1.7  | 0.8 | 0.3 | 0.5 | 0.1  | 0.0 | 0.1  | 5.9       |
|                                    | Clerical and administrative workers    | 3.4                 | 1.7  | 1.6 | 0.8 | 0.4 | 0.2  | 0.0 | 0.1  | 8.3       |
|                                    | Sales workers                          | 1.6                 | 2.7  | 0.9 | 0.6 | 0.3 | 0.2  | 0.0 | 0.0  | 6.4       |
|                                    | Machinery operators and drivers        | 1.1                 | 0.5  | 0.7 | 0.2 | 0.4 | 0.1  | 0.0 | 0.0  | 3.1       |
|                                    | Labourers                              | 0.9                 | 0.6  | 0.6 | 0.2 | 0.3 | 0.1  | 0.0 | 0.0  | 2.7       |
|                                    | <b>AQF qualification level</b>         | Certificate I or II | 1.2  | 1.3 | 0.8 | 0.4 | 0.5  | 0.2 | 0.1  | 0.1       |
| Certificate III                    | 11.1                                   | 8.1                 | 6.0  | 2.5 | 2.7 | 0.7 | 0.2  | 0.2 | 31.6 |           |
| Certificate IV                     | 3.0                                    | 1.3                 | 1.4  | 0.7 | 0.4 | 0.1 | 0.0  | 0.1 | 7.1  |           |
| Diploma/advanced diploma           | 0.1                                    | 0.2                 | 0.2  | 0.1 | 0.1 | 0.0 | 0.0  | 0.0 | 0.9  |           |
| <b>Actual duration of training</b> | Two years or less                      | 10.8                | 8.3  | 6.0 | 2.5 | 2.3 | 0.7  | 0.2 | 0.3  | 31.0      |
|                                    | More than two years                    | 4.8                 | 2.7  | 2.5 | 1.2 | 1.4 | 0.3  | 0.1 | 0.1  | 13.0      |
| <b>Full-time status</b>            | Full-time                              | 13.1                | 6.7  | 6.7 | 3.3 | 3.3 | 0.8  | 0.2 | 0.3  | 34.4      |
|                                    | Part-time                              | 2.4                 | 4.3  | 1.8 | 0.4 | 0.4 | 0.2  | 0.0 | 0.1  | 9.7       |
| <b>Total<sup>5</sup></b>           |  | 15.5                | 11.0 | 8.5 | 3.7 | 3.7 | 1.0  | 0.3 | 0.4  | 44.0      |

For notes on figures and tables, see page 20.

**Table 6 Completions in each quarter by state/territory, 2006–11 ('000)**

| Quarter        | NSW  | Vic. | Qld  | SA  | WA  | Tas. | NT  | ACT | Australia |
|----------------|------|------|------|-----|-----|------|-----|-----|-----------|
| March 2006     | 12.0 | 10.5 | 7.0  | 3.1 | 3.0 | 1.1  | 0.4 | 0.6 | 37.6      |
| June 2006      | 9.4  | 10.7 | 6.6  | 2.3 | 2.6 | 1.2  | 0.2 | 0.5 | 33.6      |
| September 2006 | 8.5  | 10.0 | 6.4  | 2.4 | 2.6 | 1.2  | 0.3 | 0.6 | 32.0      |
| December 2006  | 9.6  | 12.1 | 9.4  | 2.5 | 3.0 | 1.2  | 0.3 | 0.8 | 38.9      |
| March 2007     | 13.0 | 10.4 | 7.0  | 4.2 | 2.8 | 1.1  | 0.3 | 0.6 | 39.2      |
| June 2007      | 9.4  | 9.6  | 7.7  | 3.1 | 2.3 | 1.1  | 0.2 | 0.5 | 33.9      |
| September 2007 | 9.4  | 9.9  | 7.0  | 2.6 | 2.7 | 1.1  | 0.3 | 0.6 | 33.5      |
| December 2007  | 9.6  | 12.1 | 9.9  | 3.2 | 3.2 | 1.4  | 0.3 | 0.8 | 40.5      |
| March 2008     | 13.4 | 9.7  | 7.4  | 3.2 | 3.1 | 1.3  | 0.2 | 0.5 | 38.9      |
| June 2008      | 10.7 | 9.3  | 8.6  | 2.5 | 2.7 | 1.3  | 0.2 | 0.5 | 35.9      |
| September 2008 | 10.5 | 9.5  | 7.9  | 2.5 | 3.0 | 1.3  | 0.2 | 0.6 | 35.5      |
| December 2008  | 11.9 | 12.1 | 10.4 | 3.3 | 3.8 | 1.7  | 0.4 | 0.9 | 44.5      |
| March 2009     | 14.4 | 10.0 | 7.9  | 3.0 | 3.3 | 1.3  | 0.2 | 0.5 | 40.5      |
| June 2009      | 10.8 | 9.5  | 8.3  | 2.6 | 3.5 | 1.2  | 0.2 | 0.6 | 36.8      |
| September 2009 | 11.2 | 10.1 | 7.9  | 2.7 | 3.6 | 1.2  | 0.3 | 0.5 | 37.4      |
| December 2009  | 12.3 | 12.7 | 10.3 | 3.1 | 4.2 | 1.4  | 0.4 | 0.8 | 45.3      |
| March 2010     | 14.6 | 10.9 | 7.8  | 3.2 | 4.2 | 1.2  | 0.3 | 0.5 | 42.5      |
| June 2010      | 11.5 | 9.9  | 8.2  | 2.8 | 3.6 | 1.1  | 0.3 | 0.5 | 37.9      |
| September 2010 | 11.7 | 10.4 | 8.8  | 2.8 | 4.0 | 1.2  | 0.3 | 0.4 | 39.8      |
| December 2010  | 12.9 | 13.6 | 11.2 | 3.6 | 4.2 | 1.6  | 0.5 | 0.6 | 48.0      |
| March 2011     | 15.5 | 11.0 | 8.5  | 3.7 | 3.7 | 1.0  | 0.3 | 0.4 | 44.0      |

For notes on figures and tables, see page 20.

**Table 7 Cancellations and withdrawals<sup>2</sup> by state/territory and selected training characteristics, March quarter 2011 ('000)**

|   |  | NSW  | Vic. | Qld | SA  | WA  | Tas. | NT  | ACT | Australia |
|---|--|------|------|-----|-----|-----|------|-----|-----|-----------|
| <b>Age</b>                                | 19 years and under                     | 4.0  | 3.5  | 3.1 | 0.8 | 1.2 | 0.3  | 0.1 | 0.2 | 13.3      |
|   | 20 to 24 years                         | 3.2  | 2.8  | 1.6 | 0.5 | 0.7 | 0.2  | 0.1 | 0.3 | 9.3       |
|   | 25 to 44 years                         | 3.5  | 2.4  | 1.7 | 0.5 | 0.7 | 0.3  | 0.1 | 0.1 | 9.3       |
|   | 45 years and over                      | 1.2  | 0.7  | 0.5 | 0.2 | 0.2 | 0.1  | 0.0 | 0.0 | 3.0       |
| <b>Sex</b>                                | Male                                   | 7.4  | 5.8  | 4.4 | 1.2 | 1.9 | 0.6  | 0.2 | 0.4 | 21.8      |
|   | Female                                 | 4.5  | 3.7  | 2.7 | 0.7 | 1.0 | 0.4  | 0.1 | 0.2 | 13.2      |
| <b>Occupation (ANZSCO) group</b>          | Managers and professionals             | 0.3  | 0.4  | 0.3 | 0.1 | 0.1 | 0.0  | 0.0 | 0.0 | 1.3       |
|   | Technicians and trades workers         | 5.0  | 3.9  | 3.5 | 0.7 | 1.3 | 0.4  | 0.1 | 0.3 | 15.2      |
|   | Community and personal service workers | 1.7  | 1.3  | 0.6 | 0.1 | 0.3 | 0.1  | 0.0 | 0.1 | 4.4       |
|   | Clerical and administrative workers    | 1.9  | 1.3  | 0.9 | 0.3 | 0.3 | 0.1  | 0.0 | 0.1 | 4.9       |
|   | Sales workers                          | 1.2  | 1.6  | 0.9 | 0.4 | 0.3 | 0.1  | 0.0 | 0.1 | 4.6       |
|   | Machinery operators and drivers        | 1.0  | 0.3  | 0.3 | 0.2 | 0.2 | 0.0  | 0.0 | 0.0 | 2.1       |
|   | Labourers                              | 0.8  | 0.7  | 0.6 | 0.1 | 0.3 | 0.1  | 0.0 | 0.0 | 2.6       |
| <b>AQF qualification level</b>            | Certificate I or II                    | 1.1  | 1.0  | 0.9 | 0.3 | 0.5 | 0.2  | 0.0 | 0.0 | 4.0       |
|   | Certificate III                        | 8.8  | 7.2  | 5.1 | 1.3 | 2.0 | 0.6  | 0.2 | 0.5 | 25.7      |
|   | Certificate IV                         | 1.8  | 1.0  | 0.8 | 0.2 | 0.3 | 0.1  | 0.0 | 0.1 | 4.2       |
|   | Diploma/advanced diploma               | 0.2  | 0.3  | 0.3 | 0.1 | 0.1 | 0.1  | 0.0 | 0.0 | 1.1       |
| <b>Duration until cancelled/withdrawn</b> | Two years or less                      | 11.2 | 8.8  | 6.4 | 1.8 | 2.7 | 0.8  | 0.2 | 0.6 | 32.5      |
|   | More than two years                    | 0.8  | 0.6  | 0.6 | 0.1 | 0.1 | 0.1  | 0.0 | 0.0 | 2.5       |
| <b>Full-time status</b>                   | Full-time                              | 9.2  | 6.2  | 5.0 | 1.3 | 2.4 | 0.7  | 0.2 | 0.5 | 25.5      |
|   | Part-time                              | 2.7  | 3.2  | 2.1 | 0.6 | 0.5 | 0.2  | 0.1 | 0.2 | 9.5       |
| <b>Total<sup>5</sup></b>                  |  | 11.9 | 9.4  | 7.0 | 1.9 | 2.9 | 0.9  | 0.3 | 0.7 | 35.0      |

For notes on figures and tables, see page 20.

**Table 8 Cancellations and withdrawals<sup>2</sup> in each quarter by state/territory, 2006–11 ('000)**

| Quarter        | NSW  | Vic. | Qld | SA  | WA  | Tas. | NT  | ACT | Australia |
|----------------|------|------|-----|-----|-----|------|-----|-----|-----------|
| March 2006     | 10.1 | 10.7 | 6.2 | 2.1 | 2.1 | 0.8  | 0.4 | 0.8 | 33.2      |
| June 2006      | 9.3  | 10.0 | 6.1 | 1.9 | 1.9 | 0.8  | 0.4 | 0.7 | 31.0      |
| September 2006 | 9.3  | 9.1  | 6.2 | 2.1 | 2.2 | 0.8  | 0.4 | 0.8 | 30.9      |
| December 2006  | 9.3  | 9.0  | 6.9 | 2.0 | 2.4 | 0.8  | 0.4 | 0.8 | 31.5      |
| March 2007     | 10.6 | 9.5  | 7.2 | 2.0 | 2.5 | 0.8  | 0.4 | 0.8 | 33.7      |
| June 2007      | 9.8  | 8.6  | 7.1 | 1.9 | 2.4 | 0.9  | 0.4 | 0.8 | 31.9      |
| September 2007 | 9.8  | 8.9  | 7.6 | 1.9 | 2.5 | 0.8  | 0.4 | 0.8 | 32.6      |
| December 2007  | 10.1 | 8.8  | 8.0 | 2.0 | 2.6 | 0.9  | 0.4 | 0.8 | 33.6      |
| March 2008     | 10.3 | 8.7  | 7.8 | 2.0 | 2.6 | 0.9  | 0.4 | 0.7 | 33.4      |
| June 2008      | 10.4 | 8.1  | 7.8 | 1.8 | 2.9 | 0.9  | 0.4 | 0.7 | 33.0      |
| September 2008 | 10.5 | 9.2  | 7.7 | 1.8 | 2.7 | 1.0  | 0.4 | 0.7 | 33.9      |
| December 2008  | 10.3 | 9.3  | 7.6 | 1.8 | 2.7 | 0.9  | 0.4 | 0.7 | 33.7      |
| March 2009     | 10.2 | 8.5  | 7.0 | 1.8 | 2.2 | 0.8  | 0.4 | 0.6 | 31.5      |
| June 2009      | 9.8  | 7.8  | 6.3 | 1.6 | 2.5 | 0.8  | 0.4 | 0.6 | 29.6      |
| September 2009 | 10.0 | 7.9  | 6.6 | 1.8 | 2.4 | 0.7  | 0.3 | 0.6 | 30.3      |
| December 2009  | 9.8  | 8.4  | 7.1 | 1.9 | 2.5 | 0.7  | 0.4 | 0.6 | 31.3      |
| March 2010     | 10.5 | 8.7  | 6.9 | 1.9 | 2.6 | 0.8  | 0.4 | 0.7 | 32.5      |
| June 2010      | 10.4 | 8.6  | 6.6 | 1.8 | 2.6 | 0.8  | 0.4 | 0.6 | 31.8      |
| September 2010 | 11.0 | 9.0  | 6.7 | 2.0 | 2.7 | 0.8  | 0.4 | 0.6 | 33.2      |
| December 2010  | 11.0 | 9.3  | 7.1 | 2.0 | 2.9 | 1.0  | 0.4 | 0.6 | 34.4      |
| March 2011     | 11.9 | 9.4  | 7.0 | 1.9 | 2.9 | 0.9  | 0.3 | 0.7 | 35.0      |

For notes on figures and tables, see page 20.

**Table 9 In-training as at the end of each quarter by selected training characteristics, Australia, 2006–11 ('000)**

|                                      |  | Mar.<br>2006        | June<br>2006 | Sept.<br>2006 | Dec.<br>2006 | Mar.<br>2007 | June<br>2007 | Sept.<br>2007 | Dec.<br>2007 |
|--------------------------------------|--|---------------------|--------------|---------------|--------------|--------------|--------------|---------------|--------------|
| <b>Age</b>                           | 19 years and under                     | 139.0               | 135.7        | 132.4         | 127.2        | 142.5        | 141.0        | 138.5         | 131.7        |
|                                      | 20 to 24 years                         | 107.9               | 108.6        | 112.0         | 111.1        | 110.7        | 112.3        | 115.9         | 113.6        |
|                                      | 25 to 44 years                         | 113.4               | 112.5        | 113.8         | 111.1        | 113.3        | 113.4        | 115.9         | 112.8        |
|                                      | 45 years and over                      | 47.8                | 47.6         | 48.0          | 46.5         | 47.3         | 47.4         | 48.1          | 46.6         |
| <b>Sex</b>                           | Male                                   | 272.7               | 270.5        | 271.8         | 266.1        | 279.2        | 278.7        | 281.3         | 273.3        |
|                                      | Female                                 | 135.3               | 133.9        | 134.3         | 129.8        | 134.6        | 135.5        | 137.0         | 131.3        |
| <b>Occupation<br/>(ANZSCO) group</b> | Managers and professionals             | 6.2                 | 6.8          | 7.9           | 8.4          | 9.2          | 10.2         | 11.9          | 12.2         |
|                                      | Technicians and trades workers         | 184.4               | 182.9        | 184.6         | 183.4        | 196.1        | 195.4        | 197.3         | 194.5        |
|                                      | Community and personal service workers | 44.8                | 44.1         | 44.1          | 42.1         | 44.7         | 45.3         | 46.0          | 43.5         |
|                                      | Clerical and administrative workers    | 54.5                | 54.0         | 54.3          | 52.6         | 54.1         | 54.5         | 54.9          | 52.1         |
|                                      | Sales workers                          | 45.7                | 45.0         | 44.9          | 43.9         | 44.1         | 44.1         | 44.7          | 42.5         |
|                                      | Machinery operators and drivers        | 42.1                | 41.0         | 40.9          | 38.8         | 38.2         | 37.7         | 37.2          | 35.3         |
|                                      | Labourers                              | 30.5                | 30.4         | 29.4          | 26.8         | 27.5         | 27.1         | 26.4          | 24.5         |
|                                      | <b>AQF qualification level</b>         | Certificate I or II | 46.0         | 45.2          | 43.7         | 40.7         | 41.7         | 41.7          | 40.9         |
|                                      | Certificate III                        | 317.7               | 314.6        | 316.1         | 309.2        | 323.9        | 323.4        | 326.1         | 317.3        |
|                                      | Certificate IV                         | 42.8                | 43.0         | 44.6          | 44.4         | 46.3         | 46.8         | 48.6          | 47.1         |
|                                      | Diploma/advanced diploma               | 1.6                 | 1.5          | 1.7           | 1.6          | 1.9          | 2.3          | 2.7           | 3.0          |
| <b>Full-time status</b>              | Full-time                              | 325.6               | 323.1        | 324.5         | 318.6        | 332.2        | 330.5        | 333.5         | 324.7        |
|                                      | Part-time                              | 82.4                | 81.2         | 81.6          | 77.3         | 81.7         | 83.7         | 84.8          | 80.0         |
| <b>Total<sup>5</sup></b>             |  | 408.1               | 404.4        | 406.1         | 395.9        | 413.8        | 414.2        | 418.4         | 404.7        |

For notes on figures and tables, see page 20.

**Table 10 Commencements in each quarter by selected training characteristics, Australia, 2006–11 ('000)**

|                                      |  | Mar.<br>2006        | June<br>2006 | Sept.<br>2006 | Dec.<br>2006 | Mar.<br>2007 | June<br>2007 | Sept.<br>2007 | Dec.<br>2007 |
|--------------------------------------|--|---------------------|--------------|---------------|--------------|--------------|--------------|---------------|--------------|
| <b>Age</b>                           | 19 years and under                     | 42.4                | 22.0         | 21.7          | 23.5         | 43.4         | 24.0         | 23.3          | 23.8         |
|                                      | 20 to 24 years                         | 13.7                | 10.8         | 11.6          | 10.1         | 14.1         | 11.5         | 12.8          | 9.9          |
|                                      | 25 to 44 years                         | 21.0                | 19.3         | 20.3          | 17.5         | 21.4         | 19.8         | 22.0          | 17.2         |
|                                      | 45 years and over                      | 8.5                 | 8.3          | 8.3           | 7.4          | 8.4          | 8.4          | 8.8           | 7.1          |
| <b>Sex</b>                           | Male                                   | 53.2                | 34.3         | 35.4          | 33.6         | 54.4         | 35.7         | 38.6          | 33.3         |
|                                      | Female                                 | 32.5                | 26.2         | 26.4          | 24.8         | 32.9         | 28.0         | 28.2          | 24.6         |
| <b>Occupation<br/>(ANZSCO) group</b> | Managers and professionals             | 1.8                 | 1.6          | 2.1           | 1.9          | 2.1          | 2.4          | 3.0           | 2.2          |
|                                      | Technicians and trades workers         | 31.3                | 13.7         | 15.3          | 16.4         | 33.7         | 15.4         | 17.8          | 17.1         |
|                                      | Community and personal service workers | 11.6                | 9.0          | 9.3           | 8.9          | 12.1         | 10.0         | 10.1          | 8.9          |
|                                      | Clerical and administrative workers    | 14.0                | 11.8         | 12.1          | 10.7         | 14.1         | 12.5         | 12.4          | 10.1         |
|                                      | Sales workers                          | 11.7                | 9.7          | 9.6           | 9.2          | 10.5         | 9.6          | 10.3          | 8.4          |
|                                      | Machinery operators and drivers        | 7.0                 | 7.6          | 7.7           | 5.8          | 6.9          | 7.4          | 7.2           | 5.9          |
|                                      | Labourers                              | 8.3                 | 7.1          | 5.9           | 5.6          | 8.0          | 6.4          | 5.9           | 5.3          |
|                                      | <b>AQF qualification level</b>         | Certificate I or II | 14.2         | 10.7          | 9.6          | 10.0         | 13.1         | 10.4          | 9.6          |
|                                      | Certificate III                        | 61.8                | 42.2         | 43.1          | 40.3         | 64.1         | 44.3         | 46.7          | 41.1         |
|                                      | Certificate IV                         | 9.3                 | 7.4          | 8.9           | 7.9          | 9.7          | 8.4          | 9.8           | 7.2          |
|                                      | Diploma/advanced diploma               | 0.4                 | 0.2          | 0.3           | 0.2          | 0.5          | 0.7          | 0.7           | 0.6          |
| <b>Full-time status</b>              | Full-time                              | 65.7                | 44.2         | 45.1          | 42.2         | 66.9         | 45.7         | 49.4          | 41.7         |
|                                      | Part-time                              | 19.9                | 16.2         | 16.8          | 16.3         | 20.5         | 18.0         | 17.4          | 16.2         |
| <b>Existing worker</b>               | Existing worker                        | 18.0                | 17.5         | 18.3          | 15.3         | 18.5         | 17.9         | 19.6          | 14.9         |
|                                      | Newly commencing worker                | 67.6                | 42.9         | 43.6          | 43.1         | 68.8         | 45.8         | 47.2          | 43.0         |
| <b>Total<sup>5</sup></b>             |  | 85.7                | 60.4         | 61.9          | 58.5         | 87.4         | 63.7         | 66.8          | 57.9         |

For notes on figures and tables, see page 20.

Table 9 (continued)

| Mar. 2008 | June 2008 | Sept. 2008 | Dec. 2008 | Mar. 2009 | June 2009 | Sept. 2009 | Dec. 2009 | Mar. 2010 | June 2010 | Sept. 2010 | Dec. 2010 | Mar. 2011 |
|-----------|-----------|------------|-----------|-----------|-----------|------------|-----------|-----------|-----------|------------|-----------|-----------|
| 150.0     | 148.7     | 144.4      | 134.2     | 144.1     | 138.2     | 132.1      | 124.7     | 140.0     | 136.8     | 133.1      | 125.7     | 137.5     |
| 112.9     | 114.7     | 116.6      | 112.8     | 110.7     | 110.8     | 113.5      | 111.2     | 111.3     | 114.3     | 118.1      | 115.9     | 116.1     |
| 116.7     | 120.6     | 122.7      | 119.1     | 122.0     | 123.8     | 125.9      | 123.4     | 128.8     | 132.8     | 137.9      | 137.7     | 142.4     |
| 47.5      | 50.4      | 51.2       | 49.9      | 51.6      | 52.9      | 54.6       | 54.1      | 55.8      | 57.1      | 59.8       | 60.7      | 62.9      |
| 289.2     | 291.2     | 291.2      | 279.0     | 285.5     | 282.3     | 280.9      | 274.1     | 289.0     | 291.1     | 294.6      | 289.0     | 299.8     |
| 137.8     | 143.2     | 143.7      | 137.0     | 142.8     | 143.5     | 145.3      | 139.4     | 146.9     | 149.9     | 154.2      | 151.0     | 159.1     |
| 13.6      | 14.4      | 15.5       | 14.3      | 14.6      | 14.0      | 13.4       | 12.0      | 13.2      | 14.8      | 17.4       | 19.5      | 23.5      |
| 209.0     | 209.4     | 207.8      | 201.2     | 207.5     | 203.6     | 202.4      | 198.6     | 211.0     | 210.6     | 210.4      | 205.5     | 212.5     |
| 45.2      | 46.4      | 46.4       | 44.4      | 47.3      | 48.2      | 48.5       | 45.8      | 48.1      | 47.9      | 49.6       | 47.1      | 51.2      |
| 54.7      | 58.5      | 58.5       | 55.3      | 58.2      | 60.0      | 61.9       | 60.4      | 64.0      | 65.8      | 68.2       | 67.3      | 69.4      |
| 44.5      | 45.3      | 45.8       | 43.8      | 44.4      | 43.9      | 43.9       | 42.1      | 43.9      | 45.3      | 46.2       | 44.5      | 45.2      |
| 34.9      | 35.1      | 36.0       | 33.6      | 32.6      | 31.8      | 31.4       | 31.7      | 31.8      | 31.6      | 31.1       | 30.9      | 31.0      |
| 25.1      | 25.1      | 24.9       | 23.4      | 23.7      | 24.3      | 24.7       | 22.8      | 24.0      | 25.1      | 26.0       | 25.2      | 26.2      |
| 39.4      | 40.4      | 39.7       | 36.3      | 37.4      | 37.0      | 35.5       | 31.7      | 33.4      | 33.6      | 32.6       | 29.4      | 30.8      |
| 334.0     | 335.6     | 335.2      | 320.3     | 325.9     | 319.5     | 316.5      | 308.0     | 322.9     | 323.3     | 324.8      | 316.7     | 327.7     |
| 49.8      | 54.2      | 55.4       | 54.8      | 60.0      | 63.9      | 68.1       | 67.7      | 71.6      | 73.9      | 77.7       | 77.2      | 79.3      |
| 3.8       | 4.3       | 4.6        | 4.6       | 5.1       | 5.4       | 6.1        | 6.1       | 8.1       | 10.3      | 13.8       | 16.6      | 21.2      |
| 341.0     | 344.1     | 342.6      | 327.9     | 334.7     | 329.1     | 327.9      | 319.9     | 336.1     | 338.9     | 343.8      | 338.6     | 350.0     |
| 86.0      | 90.3      | 92.3       | 88.1      | 93.6      | 96.6      | 98.3       | 93.6      | 99.8      | 102.1     | 105.1      | 101.4     | 108.9     |
| 427.0     | 434.4     | 434.9      | 416.0     | 428.3     | 425.8     | 426.2      | 413.5     | 435.9     | 441.1     | 448.9      | 440.0     | 458.9     |

Table 10 (continued)

| Mar. 2008 | June 2008 | Sept. 2008 | Dec. 2008 | Mar. 2009 | June 2009 | Sept. 2009 | Dec. 2009 | Mar. 2010 | June 2010 | Sept. 2010 | Dec. 2010 | Mar. 2011 |
|-----------|-----------|------------|-----------|-----------|-----------|------------|-----------|-----------|-----------|------------|-----------|-----------|
| 46.4      | 25.9      | 22.9       | 22.1      | 37.7      | 20.2      | 19.9       | 23.3      | 43.4      | 23.1      | 23.5       | 25.6      | 41.6      |
| 14.5      | 12.3      | 12.3       | 9.5       | 13.0      | 10.6      | 11.8       | 10.2      | 14.9      | 13.1      | 14.1       | 11.9      | 15.9      |
| 22.2      | 23.6      | 22.1       | 18.2      | 22.2      | 21.7      | 22.7       | 19.1      | 25.3      | 25.0      | 26.7       | 23.0      | 26.7      |
| 7.9       | 11.5      | 9.2        | 8.0       | 9.4       | 10.1      | 10.5       | 9.3       | 10.2      | 11.1      | 12.4       | 10.9      | 11.0      |
| 56.6      | 39.8      | 37.7       | 32.3      | 48.7      | 34.0      | 34.9       | 35.2      | 57.3      | 39.9      | 42.1       | 40.3      | 56.3      |
| 34.4      | 33.6      | 28.9       | 25.4      | 33.6      | 28.6      | 30.0       | 26.6      | 36.5      | 32.4      | 34.6       | 31.1      | 38.9      |
| 2.9       | 2.8       | 3.0        | 1.9       | 2.4       | 1.9       | 1.8        | 1.5       | 3.5       | 3.7       | 5.2        | 5.2       | 6.9       |
| 36.5      | 18.5      | 16.3       | 15.3      | 29.9      | 14.8      | 15.7       | 17.7      | 36.8      | 19.1      | 19.6       | 20.2      | 34.0      |
| 11.8      | 11.6      | 10.3       | 9.4       | 12.8      | 10.6      | 10.4       | 9.4       | 12.7      | 9.8       | 11.6       | 9.9       | 14.4      |
| 15.0      | 16.0      | 12.6       | 10.7      | 15.0      | 14.0      | 14.6       | 12.6      | 16.3      | 15.3      | 15.6       | 13.8      | 16.1      |
| 12.2      | 10.9      | 10.8       | 9.5       | 10.5      | 9.7       | 10.6       | 9.4       | 12.3      | 12.2      | 12.3       | 10.8      | 11.8      |
| 5.9       | 7.1       | 7.6        | 5.3       | 5.4       | 5.6       | 5.7        | 5.9       | 5.7       | 6.0       | 5.8        | 5.5       | 5.4       |
| 6.8       | 6.5       | 5.9        | 5.7       | 6.3       | 6.0       | 6.1        | 5.3       | 6.6       | 6.3       | 6.7        | 5.9       | 6.5       |
| 12.6      | 11.0      | 9.5        | 9.3       | 10.8      | 8.8       | 8.3        | 8.1       | 10.8      | 8.7       | 8.0        | 7.9       | 9.9       |
| 66.3      | 48.5      | 45.9       | 38.6      | 56.2      | 39.6      | 40.4       | 40.7      | 65.3      | 45.5      | 47.6       | 45.6      | 63.9      |
| 11.0      | 12.9      | 10.3       | 9.1       | 14.2      | 13.1      | 14.9       | 12.1      | 15.0      | 14.9      | 16.2       | 12.9      | 14.6      |
| 1.2       | 0.9       | 0.9        | 0.7       | 1.1       | 1.0       | 1.3        | 0.9       | 2.8       | 3.2       | 4.9        | 4.9       | 6.7       |
| 69.0      | 51.9      | 46.9       | 39.3      | 59.8      | 42.1      | 44.4       | 42.5      | 68.7      | 51.0      | 53.2       | 49.1      | 68.0      |
| 22.1      | 21.4      | 19.7       | 18.5      | 22.5      | 20.5      | 20.4       | 19.3      | 25.1      | 21.3      | 23.5       | 22.2      | 27.1      |
| 18.7      | 23.2      | 19.6       | 16.5      | 21.8      | 22.4      | 24.0       | 20.2      | 24.3      | 26.8      | 27.8       | 24.9      | 27.2      |
| 72.3      | 50.1      | 47.0       | 41.2      | 60.5      | 40.1      | 40.9       | 41.6      | 69.6      | 45.5      | 48.9       | 46.4      | 68.0      |
| 91.1      | 73.3      | 66.6       | 57.7      | 82.3      | 62.5      | 64.9       | 61.8      | 93.9      | 72.3      | 76.7       | 71.4      | 95.2      |

**Table 11 Completions in each quarter by selected training characteristics, Australia, 2006–11 ('000)**

|  |  | Mar.<br>2006 | June<br>2006 | Sept.<br>2006 | Dec.<br>2006 | Mar.<br>2007 | June<br>2007 | Sept.<br>2007 | Dec.<br>2007 |
|--|--|--------------|--------------|---------------|--------------|--------------|--------------|---------------|--------------|
| <b>Age</b>                             | 19 years and under                     | 7.6          | 5.5          | 5.2           | 8.4          | 7.4          | 5.4          | 5.5           | 9.1          |
|  | 20 to 24 years                         | 13.9         | 10.1         | 9.4           | 11.1         | 14.5         | 10.2         | 10.2          | 11.8         |
|  | 25 to 44 years                         | 11.0         | 11.8         | 11.3          | 12.5         | 11.6         | 12.1         | 11.8          | 12.8         |
|  | 45 years and over                      | 5.1          | 6.3          | 6.1           | 6.9          | 5.7          | 6.2          | 6.0           | 6.8          |
| <b>Sex</b>                             | Male                                   | 22.3         | 18.5         | 17.7          | 21.6         | 23.4         | 19.0         | 18.9          | 22.5         |
|  | Female                                 | 15.3         | 15.1         | 14.3          | 17.3         | 15.7         | 14.9         | 14.6          | 17.9         |
| <b>Occupation<br/>(ANZSCO) group</b>   | Managers and professionals             | 0.6          | 0.5          | 0.4           | 0.8          | 0.7          | 0.8          | 0.7           | 1.0          |
|  | Technicians and trades workers         | 11.8         | 7.1          | 6.8           | 9.4          | 12.9         | 7.9          | 8.1           | 10.4         |
|  | Community and personal service workers | 5.5          | 5.6          | 5.3           | 6.6          | 5.4          | 5.3          | 5.3           | 7.2          |
|  | Clerical and administrative workers    | 7.6          | 6.9          | 6.7           | 7.5          | 7.4          | 6.7          | 6.6           | 7.7          |
|  | Sales workers                          | 4.6          | 4.8          | 4.4           | 4.8          | 4.5          | 4.6          | 4.8           | 5.2          |
|  | Machinery operators and drivers        | 4.1          | 5.2          | 4.8           | 5.1          | 4.5          | 5.0          | 4.8           | 4.9          |
|  | Labourers                              | 3.5          | 3.5          | 3.5           | 4.7          | 3.8          | 3.6          | 3.3           | 3.9          |
| <b>AQF qualification<br/>level</b>     | Certificate I or II                    | 5.9          | 5.2          | 4.9           | 6.8          | 5.8          | 4.8          | 4.8           | 6.7          |
|  | Certificate III                        | 27.7         | 24.5         | 23.0          | 27.2         | 29.0         | 24.7         | 24.2          | 28.4         |
|  | Certificate IV                         | 3.9          | 3.7          | 4.0           | 4.7          | 4.3          | 4.2          | 4.4           | 5.2          |
|  | Diploma/advanced diploma               | 0.1          | 0.1          | 0.1           | 0.2          | 0.1          | 0.1          | 0.1           | 0.2          |
| <b>Actual duration of<br/>training</b> | Two years or less                      | 26.0         | 25.6         | 24.7          | 29.8         | 26.9         | 25.8         | 25.3          | 30.6         |
|  | More than two years                    | 11.6         | 8.0          | 7.3           | 9.1          | 12.3         | 8.0          | 8.1           | 9.8          |
| <b>Full-time status</b>                | Full-time                              | 30.5         | 25.2         | 24.3          | 27.8         | 32.4         | 26.3         | 25.7          | 28.9         |
|  | Part-time                              | 7.1          | 8.4          | 7.7           | 11.2         | 6.8          | 7.6          | 7.7           | 11.6         |
| <b>Total<sup>5</sup></b>               |  | 37.6         | 33.6         | 32.0          | 38.9         | 39.2         | 33.9         | 33.5          | 40.5         |

For notes on figures and tables, see page 20.

**Table 12 Cancellations and withdrawals<sup>2</sup> in each quarter by selected training characteristics, Australia, 2006–11 ('000)**

|   |  | Mar.<br>2006 | June<br>2006 | Sept.<br>2006 | Dec.<br>2006 | Mar.<br>2007 | June<br>2007 | Sept.<br>2007 | Dec.<br>2007 |
|---|--|--------------|--------------|---------------|--------------|--------------|--------------|---------------|--------------|
| <b>Age</b>                                    | 19 years and under                     | 12.4         | 11.5         | 11.6          | 12.1         | 13.3         | 12.2         | 12.4          | 13.5         |
|   | 20 to 24 years                         | 8.7          | 8.1          | 8.0           | 8.4          | 8.9          | 8.3          | 8.6           | 8.8          |
|   | 25 to 44 years                         | 9.1          | 8.7          | 8.6           | 8.3          | 8.8          | 8.5          | 8.9           | 8.6          |
|   | 45 years and over                      | 2.9          | 2.8          | 2.7           | 2.7          | 2.7          | 2.9          | 2.9           | 2.8          |
| <b>Sex</b>                                    | Male                                   | 20.1         | 19.0         | 18.9          | 19.3         | 20.7         | 19.4         | 20.0          | 20.8         |
|   | Female                                 | 13.0         | 12.0         | 12.0          | 12.3         | 13.0         | 12.4         | 12.6          | 12.9         |
| <b>Occupation<br/>(ANZSCO) group</b>          | Managers and professionals             | 0.4          | 0.4          | 0.5           | 0.6          | 0.6          | 0.6          | 0.7           | 0.8          |
|   | Technicians and trades workers         | 11.4         | 11.1         | 11.0          | 11.3         | 12.5         | 12.1         | 12.3          | 13.0         |
|   | Community and personal service workers | 4.5          | 3.7          | 3.8           | 4.1          | 4.3          | 4.2          | 4.1           | 4.3          |
|   | Clerical and administrative workers    | 4.7          | 4.5          | 4.6           | 4.5          | 4.8          | 4.8          | 4.9           | 4.7          |
|   | Sales workers                          | 5.6          | 5.0          | 5.0           | 5.0          | 5.4          | 4.6          | 4.7           | 5.1          |
|   | Machinery operators and drivers        | 3.0          | 3.0          | 2.9           | 2.7          | 2.9          | 2.7          | 2.7           | 2.7          |
|   | Labourers                              | 3.5          | 3.2          | 3.2           | 3.3          | 3.2          | 3.0          | 3.2           | 3.1          |
| <b>AQF qualification<br/>level</b>            | Certificate I or II                    | 6.2          | 5.5          | 5.6           | 5.9          | 5.8          | 5.0          | 5.2           | 5.6          |
|   | Certificate III                        | 24.1         | 22.6         | 22.4          | 22.7         | 24.7         | 23.5         | 24.1          | 24.8         |
|   | Certificate IV                         | 2.8          | 2.8          | 2.8           | 2.9          | 3.1          | 3.2          | 3.1           | 3.0          |
|   | Diploma/advanced diploma               | 0.1          | 0.1          | 0.1           | 0.1          | 0.1          | 0.2          | 0.2           | 0.2          |
| <b>Duration until<br/>cancelled/withdrawn</b> | Two years or less                      | 30.8         | 28.5         | 28.5          | 29.3         | 31.2         | 29.4         | 30.2          | 31.4         |
|   | More than two years                    | 2.4          | 2.5          | 2.4           | 2.2          | 2.6          | 2.5          | 2.4           | 2.2          |
| <b>Full-time status</b>                       | Full-time                              | 23.9         | 23.2         | 22.9          | 22.7         | 24.7         | 23.9         | 24.3          | 24.4         |
|   | Part-time                              | 9.3          | 7.8          | 8.0           | 8.9          | 9.0          | 8.0          | 8.3           | 9.2          |
| <b>Total<sup>5</sup></b>                      |  | 33.2         | 31.0         | 30.9          | 31.5         | 33.7         | 31.9         | 32.6          | 33.6         |

For notes on figures and tables, see page 20.

Table 11 (continued)

| Mar. 2008 | June 2008 | Sept. 2008 | Dec. 2008 | Mar. 2009 | June 2009 | Sept. 2009 | Dec. 2009 | Mar. 2010 | June 2010 | Sept. 2010 | Dec. 2010 | Mar. 2011 |
|-----------|-----------|------------|-----------|-----------|-----------|------------|-----------|-----------|-----------|------------|-----------|-----------|
| 7.5       | 6.3       | 6.5        | 10.5      | 7.8       | 6.5       | 7.2        | 10.8      | 8.5       | 6.6       | 7.6        | 12.0      | 8.7       |
| 15.1      | 11.0      | 10.9       | 13.0      | 15.1      | 11.0      | 11.0       | 12.7      | 15.3      | 11.0      | 11.4       | 13.8      | 15.9      |
| 11.0      | 12.1      | 12.1       | 13.8      | 12.0      | 12.7      | 12.8       | 14.1      | 12.5      | 13.0      | 13.7       | 14.8      | 13.3      |
| 5.2       | 6.6       | 6.1        | 7.3       | 5.7       | 6.5       | 6.5        | 7.6       | 6.2       | 7.3       | 7.1        | 7.3       | 6.2       |
| 23.4      | 19.8      | 19.8       | 25.3      | 24.8      | 20.6      | 20.5       | 24.8      | 25.6      | 20.8      | 21.8       | 26.5      | 26.2      |
| 15.4      | 16.2      | 15.7       | 19.2      | 15.8      | 16.2      | 16.9       | 20.5      | 16.9      | 17.1      | 18.0       | 21.5      | 17.9      |
| 0.7       | 1.2       | 1.1        | 2.0       | 1.1       | 1.4       | 1.2        | 2.1       | 1.4       | 1.1       | 1.4        | 1.8       | 1.4       |
| 13.8      | 9.1       | 9.0        | 11.9      | 14.8      | 9.7       | 9.7        | 12.5      | 15.9      | 10.7      | 11.4       | 14.2      | 16.4      |
| 5.9       | 6.3       | 6.0        | 6.9       | 5.6       | 5.8       | 6.0        | 7.5       | 5.9       | 5.5       | 5.8        | 8.2       | 5.9       |
| 7.2       | 6.9       | 7.1        | 8.6       | 7.2       | 7.3       | 7.4        | 9.1       | 7.4       | 7.7       | 7.7        | 9.1       | 8.3       |
| 4.3       | 5.0       | 5.3        | 6.2       | 4.7       | 5.1       | 6.0        | 6.4       | 5.7       | 6.2       | 6.8        | 7.4       | 6.4       |
| 3.6       | 4.1       | 3.9        | 5.0       | 3.9       | 4.4       | 3.9        | 3.5       | 3.4       | 3.8       | 3.8        | 3.4       | 3.1       |
| 3.3       | 3.3       | 3.1        | 4.0       | 3.4       | 3.0       | 3.2        | 4.2       | 2.8       | 2.9       | 2.9        | 3.8       | 2.7       |
| 4.9       | 4.8       | 5.0        | 6.9       | 4.8       | 4.8       | 5.5        | 6.9       | 4.8       | 4.4       | 5.0        | 6.8       | 4.5       |
| 29.2      | 26.0      | 25.3       | 31.1      | 30.6      | 26.5      | 25.8       | 29.9      | 31.1      | 25.8      | 27.1       | 32.0      | 31.6      |
| 4.5       | 4.9       | 5.0        | 6.0       | 4.9       | 5.1       | 5.8        | 7.9       | 6.1       | 7.2       | 7.1        | 8.1       | 7.1       |
| 0.2       | 0.2       | 0.2        | 0.4       | 0.3       | 0.3       | 0.3        | 0.6       | 0.4       | 0.5       | 0.7        | 1.1       | 0.9       |
| 26.2      | 27.4      | 26.9       | 33.9      | 27.4      | 28.1      | 28.6       | 34.8      | 29.0      | 28.9      | 29.8       | 36.3      | 31.0      |
| 12.7      | 8.6       | 8.6        | 10.7      | 13.1      | 8.7       | 8.8        | 10.5      | 13.5      | 9.0       | 10.0       | 11.7      | 13.0      |
| 31.8      | 27.3      | 26.8       | 32.2      | 32.9      | 28.0      | 27.3       | 31.6      | 33.4      | 28.1      | 28.6       | 32.4      | 34.4      |
| 7.1       | 8.7       | 8.7        | 12.4      | 7.7       | 8.8       | 10.1       | 13.7      | 9.1       | 9.8       | 11.2       | 15.5      | 9.7       |
| 38.9      | 35.9      | 35.5       | 44.5      | 40.5      | 36.8      | 37.4       | 45.3      | 42.5      | 37.9      | 39.8       | 48.0      | 44.0      |

Table 12 (continued)

| Mar. 2008 | June 2008 | Sept. 2008 | Dec. 2008 | Mar. 2009 | June 2009 | Sept. 2009 | Dec. 2009 | Mar. 2010 | June 2010 | Sept. 2010 | Dec. 2010 | Mar. 2011 |
|-----------|-----------|------------|-----------|-----------|-----------|------------|-----------|-----------|-----------|------------|-----------|-----------|
| 13.6      | 13.1      | 13.0       | 13.4      | 12.5      | 11.1      | 10.8       | 11.8      | 12.6      | 11.7      | 11.7       | 12.9      | 13.3      |
| 8.8       | 8.4       | 8.7        | 8.6       | 8.1       | 7.6       | 7.6        | 8.1       | 8.3       | 8.2       | 8.7        | 9.0       | 9.3       |
| 8.5       | 8.7       | 9.2        | 8.8       | 8.2       | 8.0       | 8.8        | 8.5       | 8.7       | 8.9       | 9.5        | 9.3       | 9.3       |
| 2.6       | 2.7       | 3.0        | 2.8       | 2.7       | 2.9       | 3.1        | 2.9       | 2.9       | 3.0       | 3.3        | 3.3       | 3.0       |
| 20.5      | 20.4      | 20.9       | 20.7      | 19.5      | 18.3      | 18.6       | 19.3      | 20.0      | 19.6      | 20.3       | 21.3      | 21.8      |
| 12.9      | 12.5      | 13.0       | 13.0      | 12.0      | 11.3      | 11.7       | 12.0      | 12.4      | 12.2      | 13.0       | 13.1      | 13.2      |
| 0.8       | 0.8       | 0.9        | 1.0       | 0.9       | 0.9       | 1.0        | 0.7       | 0.8       | 0.9       | 1.0        | 1.2       | 1.3       |
| 13.1      | 13.4      | 13.7       | 13.3      | 12.9      | 12.4      | 12.2       | 12.5      | 13.6      | 13.2      | 13.6       | 14.3      | 15.2      |
| 4.2       | 4.1       | 4.2        | 4.5       | 4.2       | 3.8       | 4.0        | 4.4       | 4.4       | 4.3       | 4.3        | 4.2       | 4.4       |
| 4.7       | 4.7       | 4.9        | 4.5       | 4.3       | 4.2       | 4.5        | 4.4       | 4.7       | 4.9       | 5.1        | 5.0       | 4.9       |
| 5.4       | 4.6       | 4.7        | 5.0       | 4.6       | 4.4       | 4.0        | 4.5       | 4.3       | 4.2       | 4.3        | 4.8       | 4.6       |
| 2.5       | 2.5       | 2.6        | 2.4       | 2.1       | 1.7       | 1.9        | 2.0       | 1.9       | 2.0       | 2.1        | 2.0       | 2.1       |
| 2.8       | 2.8       | 3.0        | 3.0       | 2.5       | 2.2       | 2.6        | 2.8       | 2.6       | 2.3       | 2.9        | 3.0       | 2.6       |
| 5.1       | 4.7       | 4.9        | 5.3       | 4.6       | 4.0       | 4.1        | 4.6       | 4.1       | 3.8       | 3.9        | 4.2       | 4.0       |
| 24.9      | 24.8      | 25.4       | 24.9      | 23.2      | 21.8      | 21.6       | 22.2      | 23.5      | 22.9      | 23.8       | 24.8      | 25.7      |
| 3.1       | 3.1       | 3.4        | 3.1       | 3.4       | 3.5       | 4.1        | 4.1       | 4.3       | 4.4       | 4.7        | 4.5       | 4.2       |
| 0.2       | 0.3       | 0.3        | 0.4       | 0.3       | 0.4       | 0.4        | 0.4       | 0.4       | 0.6       | 0.7        | 1.0       | 1.1       |
| 31.1      | 30.6      | 31.5       | 31.5      | 29.2      | 27.2      | 28.0       | 29.1      | 30.0      | 29.2      | 30.6       | 32.0      | 32.5      |
| 2.3       | 2.4       | 2.4        | 2.2       | 2.3       | 2.4       | 2.2        | 2.3       | 2.5       | 2.5       | 2.6        | 2.4       | 2.5       |
| 24.8      | 24.9      | 25.4       | 24.0      | 23.0      | 21.5      | 21.9       | 21.8      | 23.3      | 23.2      | 24.2       | 24.6      | 25.5      |
| 8.6       | 8.0       | 8.5        | 9.6       | 8.6       | 8.0       | 8.4        | 9.5       | 9.2       | 8.6       | 9.0        | 9.8       | 9.5       |
| 33.4      | 33.0      | 33.9       | 33.7      | 31.5      | 29.6      | 30.3       | 31.3      | 32.5      | 31.8      | 33.2       | 34.4      | 35.0      |

**Table 13 In-training in top 20 training packages by state/territory, as at 31 March 2011 ('000)**

| Training package  | NSW          | Vic.         | Qld         | SA          | WA          | Tas.        | NT          | ACT          | Australia    |
|---|--------------|--------------|-------------|-------------|-------------|-------------|-------------|--------------|--------------|
| Business Services (BSA, BSB)  | 25.1         | 14.3         | 17.2        | 6.3         | 2.0         | 2.0         | 0.4         | 0.7          | 67.8         |
| Construction, Plumbing & Services Integrated Framework (BCF, BCG, BCP, CPC)                   | 14.5         | 19.0         | 11.1        | 3.4         | 3.6         | 1.5         | 0.5         | 1.1          | 54.7         |
| Retail Services (SIR, WRP, WRR, WRW)  | 11.5         | 12.7         | 7.4         | 4.0         | 2.2         | 1.2         | 0.3         | 0.4          | 39.7         |
| Tourism, Hospitality and Events (SIT, THH, THT)   | 13.8         | 9.8          | 5.6         | 1.6         | 2.2         | 1.0         | 0.3         | 1.0          | 35.2         |
| Electrotechnology (UEE, UTE, UTL)   | 9.1          | 7.7          | 7.2         | 2.5         | 3.8         | 0.7         | 0.5         | 0.7          | 32.2         |
| Automotive Industry Retail, Service and Repair (AUR)  | 9.3          | 6.8          | 5.7         | 2.4         | 3.6         | 0.7         | 0.5         | 0.4          | 29.3         |
| Metal and Engineering (MEM)   | 5.9          | 5.2          | 7.9         | 1.7         | 4.9         | 0.7         | 0.3         | 0.1          | 26.7         |
| Transport and Logistics (TDT, TLI)  | 11.3         | 5.4          | 3.9         | 1.9         | 2.8         | 0.4         | 0.2         | 0.3          | 26.1         |
| Community Services (CHC)  | 9.3          | 6.0          | 4.1         | 1.0         | 2.2         | 0.8         | 0.5         | 1.1          | 24.9         |
| Manufacturing (MCM, MSA)  | 5.3          | 5.8          | 1.9         | 0.4         | 1.4         | -           | 0.0         | 0.0          | 14.8         |
| Hairdressing (WRH)  | 3.6          | 2.3          | 3.0         | 0.9         | 1.3         | 0.3         | 0.1         | 0.3          | 11.9         |
| Agriculture, Horticulture and Conservation and Land Management (AHC, RTD, RTE, RTF, RUA, RUH) | 3.2          | 3.7          | 1.9         | 1.3         | 0.6         | 0.3         | 0.2         | 0.1          | 11.4         |
| Resources and Infrastructure (BCC, DRT, MNC, MNM, MNQ, RII)                                   | 2.5          | 0.5          | 2.7         | 0.7         | 1.9         | 0.4         | 0.2         | 0.0          | 9.0          |
| Financial Services (FNA, FNB, FNS)  | 3.5          | 1.3          | 1.8         | 0.4         | 0.4         | 0.1         | 0.1         | 0.1          | 7.7          |
| Food Processing Industry (FDF)  | 2.2          | 2.5          | 1.3         | 0.8         | 0.5         | 0.2         | 0.0         | 0.1          | 7.6          |
| Australian Meat Industry (MTM)  | 2.1          | 1.4          | 2.1         | 0.7         | 0.7         | 0.2         | 0.0         | 0.1          | 7.3          |
| Health (HLT)  | 2.9          | 2.3          | 0.6         | 0.2         | 0.2         | 0.2         | 0.0         | 0.1          | 6.6          |
| Furnishing (LMF)  | 1.3          | 1.8          | 1.5         | 0.5         | 0.8         | 0.3         | 0.1         | 0.1          | 6.4          |
| Sport, Fitness and Recreation Training Package (SIS, SRC, SRF, SRO, SRS)                      | 0.7          | 2.2          | 1.5         | 0.1         | 0.2         | 0.1         | 0.0         | 0.1          | 4.9          |
| Asset Maintenance (PRM)   | 2.2          | 0.8          | 1.1         | 0.2         | 0.2         | 0.2         | 0.0         | 0.2          | 4.8          |
| <b>Top 20 training packages sub-total ('000)</b>  | <b>139.2</b> | <b>111.6</b> | <b>89.5</b> | <b>30.9</b> | <b>35.3</b> | <b>11.3</b> | <b>4.2</b>  | <b>7.0</b>   | <b>429.0</b> |
| Other training packages   | 9.0          | 4.9          | 5.6         | 2.3         | 3.3         | 0.8         | 0.5         | 1.0          | 27.5         |
| <b>All training packages ('000)</b>   | <b>148.2</b> | <b>116.6</b> | <b>95.1</b> | <b>33.3</b> | <b>38.6</b> | <b>12.1</b> | <b>4.8</b>  | <b>8.0</b>   | <b>456.5</b> |
| Non-training packages   | 0.6          | 0.3          | 0.3         | 0.0         | 1.1         | 0.1         | 0.0         | 0.0          | 2.4          |
| <b>Total number ('000)</b>  | <b>148.8</b> | <b>116.9</b> | <b>95.4</b> | <b>33.3</b> | <b>39.7</b> | <b>12.2</b> | <b>4.8</b>  | <b>8.0</b>   | <b>458.9</b> |
| <b>Training packages as proportion of total (%)</b>   | <b>99.6</b>  | <b>99.7</b>  | <b>99.7</b> | <b>99.9</b> | <b>97.3</b> | <b>99.5</b> | <b>99.9</b> | <b>100.0</b> | <b>99.5</b>  |

A dash (-) represents a true zero figure, with no contracts reported in these categories.

For notes on figures and tables, see page 20.

**Table 14 Commencements in top 20 training packages by state/territory, March quarter 2011 ('000)**

| Training package  | NSW         | Vic.        | Qld         | SA           | WA          | Tas.         | NT           | ACT          | Australia   |
|---|-------------|-------------|-------------|--------------|-------------|--------------|--------------|--------------|-------------|
| Business Services (BSA, BSB)  | 5.6         | 4.9         | 3.9         | 1.5          | 0.8         | 0.4          | 0.1          | 0.1          | 17.3        |
| Retail Services (SIR, WRP, WRR, WRW)  | 2.5         | 4.2         | 1.9         | 1.0          | 0.7         | 0.4          | 0.1          | 0.1          | 10.8        |
| Tourism, Hospitality and Events (SIT, THH, THT)   | 2.6         | 2.7         | 1.2         | 0.4          | 0.6         | 0.2          | 0.1          | 0.1          | 7.9         |
| Construction, Plumbing & Services Integrated Framework (BCF, BCG, BCP, CPC)                   | 2.3         | 2.6         | 1.2         | 0.4          | 0.7         | 0.2          | 0.1          | 0.2          | 7.7         |
| Community Services (CHC)  | 2.5         | 1.8         | 0.9         | 0.2          | 0.6         | 0.1          | 0.1          | 0.3          | 6.6         |
| Automotive Industry Retail, Service and Repair (AUR)  | 1.8         | 1.2         | 0.9         | 0.5          | 0.7         | 0.1          | 0.1          | 0.1          | 5.4         |
| Electrotechnology (UEE, UTE, UTL)   | 1.7         | 1.2         | 1.1         | 0.4          | 0.5         | 0.1          | 0.1          | 0.1          | 5.1         |
| Transport and Logistics (TDT, TLI)  | 2.0         | 1.2         | 0.6         | 0.4          | 0.5         | 0.1          | 0.1          | 0.0          | 4.9         |
| Metal and Engineering (MEM)   | 1.2         | 0.7         | 1.3         | 0.3          | 0.9         | 0.1          | 0.1          | 0.0          | 4.6         |
| Manufacturing (MCM, MSA)  | 0.6         | 1.7         | 0.5         | 0.1          | 0.2         | -            | -            | -            | 3.1         |
| Agriculture, Horticulture and Conservation and Land Management (AHC, RTD, RTE, RTF, RUA, RUH) | 0.8         | 0.7         | 0.4         | 0.3          | 0.2         | 0.1          | 0.1          | 0.0          | 2.6         |
| Sport, Fitness and Recreation Training Package (SIS, SRC, SRF, SRO, SRS)                      | 0.2         | 1.0         | 0.7         | 0.1          | 0.1         | 0.0          | 0.0          | 0.0          | 2.2         |
| Hairdressing (WRH)  | 0.5         | 0.4         | 0.4         | 0.1          | 0.2         | 0.0          | 0.0          | 0.1          | 1.7         |
| Resources and Infrastructure (BCC, DRT, MNC, MNM, MNQ, RII)                                   | 0.6         | 0.1         | 0.5         | 0.2          | 0.3         | 0.0          | 0.1          | 0.0          | 1.7         |
| Financial Services (FNA, FNB, FNS)  | 0.8         | 0.4         | 0.3         | 0.1          | 0.1         | 0.0          | 0.0          | 0.0          | 1.7         |
| Australian Meat Industry (MTM)  | 0.4         | 0.3         | 0.5         | 0.2          | 0.1         | 0.0          | 0.0          | 0.0          | 1.6         |
| Health (HLT)  | 0.5         | 0.5         | 0.2         | 0.1          | 0.1         | 0.0          | 0.0          | 0.0          | 1.3         |
| Food Processing Industry (FDF)  | 0.4         | 0.4         | 0.2         | 0.1          | 0.1         | 0.0          | 0.0          | 0.0          | 1.2         |
| Furnishing (LMF)  | 0.2         | 0.3         | 0.2         | 0.1          | 0.1         | 0.0          | 0.0          | 0.0          | 1.0         |
| Asset Maintenance (PRM)   | 0.2         | 0.1         | 0.3         | 0.0          | 0.1         | 0.0          | 0.0          | 0.0          | 0.9         |
| <b>Top 20 training packages sub-total</b>   | <b>27.5</b> | <b>26.3</b> | <b>17.1</b> | <b>6.3</b>   | <b>7.5</b>  | <b>2.1</b>   | <b>1.0</b>   | <b>1.3</b>   | <b>89.2</b> |
| Other training packages   | 1.7         | 1.0         | 1.4         | 0.4          | 0.6         | 0.2          | 0.1          | 0.5          | 5.9         |
| <b>All training packages ('000)</b>   | <b>29.3</b> | <b>27.3</b> | <b>18.5</b> | <b>6.7</b>   | <b>8.1</b>  | <b>2.3</b>   | <b>1.1</b>   | <b>1.7</b>   | <b>95.0</b> |
| Non-training packages   | 0.0         | 0.0         | 0.0         | 0.0          | 0.0         | 0.0          | -            | -            | 0.1         |
| <b>Total number ('000)</b>  | <b>29.3</b> | <b>27.4</b> | <b>18.5</b> | <b>6.7</b>   | <b>8.1</b>  | <b>2.3</b>   | <b>1.1</b>   | <b>1.7</b>   | <b>95.2</b> |
| <b>Training packages as proportion of total (%)</b>   | <b>99.9</b> | <b>99.8</b> | <b>99.9</b> | <b>100.0</b> | <b>99.8</b> | <b>100.0</b> | <b>100.0</b> | <b>100.0</b> | <b>99.9</b> |

A dash (-) represents a true zero figure, with no contracts reported in these categories.

For notes on figures and tables, see page 20.



## Training activity: 12-month ending series

Table 15 Commencements by selected training characteristics, 12 months ending 31 March, Australia, 2006–11 ('000)

|                                  |  | 12 months ending 31 March |              |              |              |              |              |
|----------------------------------|--|---------------------------|--------------|--------------|--------------|--------------|--------------|
|                                  |  | 2006                      | 2007         | 2008         | 2009         | 2010         | 2011         |
| <b>Age</b>                       | 19 years and under                     | 109.8                     | 110.5        | 117.6        | 108.7        | 106.8        | 113.7        |
|                                  | 20 to 24 years                         | 46.9                      | 46.7         | 48.6         | 47.0         | 47.5         | 55.0         |
|                                  | 25 to 44 years                         | 79.0                      | 78.6         | 81.1         | 86.1         | 88.7         | 101.4        |
|                                  | 45 years and over                      | 32.3                      | 32.4         | 32.2         | 38.1         | 40.1         | 45.5         |
| <b>Sex</b>                       | Male                                   | 157.9                     | 157.8        | 164.2        | 158.4        | 161.4        | 178.6        |
|                                  | Female                                 | 110.0                     | 110.3        | 115.3        | 121.5        | 121.7        | 136.9        |
| <b>Occupation (ANZSCO) group</b> | Managers and professionals             | 4.8                       | 7.6          | 10.5         | 10.1         | 8.7          | 21.0         |
|                                  | Technicians and trades workers         | 75.0                      | 79.1         | 86.9         | 80.0         | 85.0         | 92.9         |
|                                  | Community and personal service workers | 39.4                      | 39.2         | 40.9         | 44.0         | 43.1         | 45.6         |
|                                  | Clerical and administrative workers    | 48.1                      | 48.7         | 50.0         | 54.3         | 57.5         | 60.9         |
|                                  | Sales workers                          | 41.2                      | 38.9         | 40.5         | 41.8         | 41.9         | 47.2         |
|                                  | Machinery operators and drivers        | 30.6                      | 28.0         | 26.4         | 25.3         | 22.9         | 22.6         |
|                                  | Labourers                              | 28.9                      | 26.6         | 24.4         | 24.3         | 23.9         | 25.4         |
|                                  | <b>AQF qualification level</b>         | Certificate I or II       | 47.6         | 43.3         | 41.6         | 40.5         | 36.1         |
|                                  | Certificate III                        | 189.5                     | 189.7        | 198.3        | 189.3        | 185.9        | 202.6        |
|                                  | Certificate IV                         | 29.8                      | 33.9         | 36.4         | 46.4         | 55.1         | 58.5         |
|                                  | Diploma/advanced diploma               | 1.0                       | 1.3          | 3.2          | 3.7          | 5.9          | 19.8         |
| <b>Full-time status</b>          | Full-time                              | 198.0                     | 198.4        | 205.8        | 198.0        | 197.7        | 221.3        |
|                                  | Part-time                              | 70.0                      | 69.8         | 73.8         | 82.0         | 85.3         | 94.2         |
| <b>Total<sup>6</sup></b>         |  | <b>267.9</b>              | <b>268.1</b> | <b>279.5</b> | <b>279.9</b> | <b>283.0</b> | <b>315.5</b> |

For notes on figures and tables, see page 20.

Table 16 Completions by selected training characteristics, 12 months ending 31 March, Australia, 2006–11 ('000)

|                                    |  | 12 months ending 31 March |              |              |              |              |              |
|------------------------------------|--|---------------------------|--------------|--------------|--------------|--------------|--------------|
|                                    |  | 2006                      | 2007         | 2008         | 2009         | 2010         | 2011         |
| <b>Age</b>                         | 19 years and under                     | 25.7                      | 26.5         | 27.5         | 31.1         | 33.0         | 34.8         |
|                                    | 20 to 24 years                         | 42.4                      | 45.1         | 47.3         | 49.9         | 50.0         | 52.1         |
|                                    | 25 to 44 years                         | 47.1                      | 47.2         | 47.7         | 50.0         | 52.2         | 54.8         |
|                                    | 45 years and over                      | 24.1                      | 25.0         | 24.1         | 25.5         | 26.8         | 27.9         |
| <b>Sex</b>                         | Male                                   | 77.8                      | 81.3         | 83.8         | 89.6         | 91.5         | 95.3         |
|                                    | Female                                 | 61.4                      | 62.4         | 62.9         | 66.9         | 70.4         | 74.5         |
| <b>Occupation (ANZSCO) group</b>   | Managers and professionals             | 2.1                       | 2.4          | 3.2          | 5.5          | 6.2          | 5.6          |
|                                    | Technicians and trades workers         | 31.7                      | 36.2         | 40.3         | 44.7         | 47.7         | 52.8         |
|                                    | Community and personal service workers | 22.2                      | 22.9         | 23.6         | 24.8         | 25.4         | 25.3         |
|                                    | Clerical and administrative workers    | 29.4                      | 28.5         | 28.2         | 29.7         | 31.2         | 32.9         |
|                                    | Sales workers                          | 19.3                      | 18.6         | 18.9         | 21.2         | 23.2         | 26.7         |
|                                    | Machinery operators and drivers        | 19.1                      | 19.6         | 18.2         | 16.8         | 15.2         | 14.2         |
|                                    | Labourers                              | 15.4                      | 15.5         | 14.2         | 13.8         | 13.1         | 12.2         |
|                                    | <b>AQF qualification level</b>         | Certificate I or II       | 24.7         | 22.7         | 21.2         | 21.5         | 22.0         |
|                                    | Certificate III                        | 99.2                      | 103.7        | 106.5        | 113.0        | 113.4        | 116.5        |
|                                    | Certificate IV                         | 14.9                      | 16.8         | 18.4         | 20.8         | 25.0         | 29.4         |
|                                    | Diploma/advanced diploma               | 0.4                       | 0.5          | 0.6          | 1.2          | 1.6          | 3.1          |
| <b>Actual duration of training</b> | Two years or less                      | 103.8                     | 107.0        | 108.0        | 115.6        | 120.4        | 126.0        |
|                                    | More than two years                    | 35.4                      | 36.7         | 38.6         | 40.9         | 41.5         | 43.7         |
| <b>Full-time status</b>            | Full-time                              | 105.8                     | 109.7        | 112.7        | 119.1        | 120.3        | 123.5        |
|                                    | Part-time                              | 33.4                      | 34.1         | 33.9         | 37.4         | 41.6         | 46.2         |
| <b>Total<sup>6</sup></b>           |  | <b>139.2</b>              | <b>143.7</b> | <b>146.6</b> | <b>156.5</b> | <b>161.9</b> | <b>169.7</b> |

For notes on figures and tables, see page 20.

**Table 17 Commencements by occupation and state/territory, 12 months ending 31 March 2011 ('000)**

| Occupation (ANZSCO) group                                   | NSW  | Vic. | Qld  | SA   | WA   | Tas. | NT  | ACT | Australia |
|---|------|------|------|------|------|------|-----|-----|-----------|
| <b>Managers</b>   | 3.4  | 5.5  | 6.1  | 1.8  | 0.7  | 0.6  | 0.1 | 0.5 | 18.8      |
| 11 Chief executives, general managers and legislators       | -    | -    | -    | -    | -    | -    | -   | -   | -         |
| 12 Farmers and farm managers                                | 0.3  | 0.4  | 0.3  | 0.2  | 0.1  | 0.0  | 0.0 | -   | 1.4       |
| 13 Specialist managers                                      | 3.0  | 4.9  | 5.5  | 1.5  | 0.4  | 0.5  | 0.1 | 0.2 | 16.2      |
| 14 Hospitality, retail and service managers                 | 0.1  | 0.2  | 0.3  | 0.1  | 0.2  | 0.0  | 0.0 | 0.3 | 1.2       |
| <b>Professionals</b>  | 0.4  | 0.7  | 0.5  | 0.4  | 0.1  | 0.0  | 0.0 | 0.1 | 2.2       |
| 21 Arts and media professionals                             | 0.0  | 0.0  | 0.0  | -    | -    | -    | -   | -   | 0.0       |
| 22 Business, human resource and marketing professionals     | 0.2  | 0.6  | 0.2  | 0.1  | 0.1  | 0.0  | 0.0 | 0.0 | 1.3       |
| 23 Design, engineering, science and transport professionals | 0.1  | 0.1  | 0.2  | 0.1  | 0.0  | 0.0  | 0.0 | 0.0 | 0.5       |
| 24 Education professionals                                  | -    | -    | 0.1  | 0.2  | -    | -    | -   | 0.0 | 0.3       |
| 25 Health professionals                                     | 0.0  | -    | -    | -    | -    | -    | -   | -   | 0.0       |
| 26 ICT professionals  | 0.0  | -    | -    | 0.0  | -    | 0.0  | -   | 0.0 | 0.0       |
| 27 Legal, social and welfare professionals                  | 0.0  | 0.0  | 0.0  | 0.0  | 0.0  | -    | -   | -   | 0.1       |
| <b>Technicians and trades workers</b>                       | 26.4 | 24.1 | 20.1 | 6.9  | 10.7 | 2.3  | 1.0 | 1.3 | 92.9      |
| 31 Engineering, ICT and science technicians                 | 1.6  | 0.6  | 1.9  | 0.6  | 0.9  | 0.2  | 0.1 | 0.1 | 6.0       |
| 32 Automotive and engineering                               | 5.6  | 4.0  | 4.7  | 1.5  | 3.1  | 0.4  | 0.3 | 0.2 | 19.9      |
| 33 Construction trades workers                              | 5.9  | 8.0  | 3.8  | 1.4  | 2.1  | 0.6  | 0.2 | 0.4 | 22.3      |
| 34 Electrotechnology and telecommunications trades workers  | 3.7  | 3.0  | 2.5  | 1.0  | 1.5  | 0.2  | 0.2 | 0.3 | 12.3      |
| 35 Food trades workers                                      | 3.0  | 2.8  | 2.3  | 0.6  | 0.8  | 0.4  | 0.1 | 0.1 | 10.0      |
| 36 Skilled animal and horticultural workers                 | 1.4  | 1.5  | 1.1  | 0.7  | 0.3  | 0.1  | 0.0 | 0.0 | 5.2       |
| 39 Other technicians and trades workers                     | 5.3  | 4.1  | 4.0  | 1.1  | 2.0  | 0.3  | 0.2 | 0.2 | 17.2      |
| 391 Hairdressers  | 1.6  | 1.2  | 1.4  | 0.4  | 0.5  | 0.1  | 0.0 | 0.1 | 5.5       |
| 392 Printing trades workers                                 | 0.1  | 0.2  | 0.1  | 0.2  | 0.0  | 0.1  | 0.0 | 0.0 | 0.7       |
| 393 Textile, clothing and footwear trades workers           | 0.0  | 0.0  | 0.0  | 0.0  | 0.0  | 0.0  | -   | 0.0 | 0.1       |
| 394 Wood trades workers                                     | 0.4  | 0.6  | 0.4  | 0.1  | 0.3  | 0.0  | 0.0 | 0.0 | 1.9       |
| 399 Miscellaneous   | 3.1  | 2.1  | 2.0  | 0.3  | 1.1  | 0.1  | 0.1 | 0.0 | 8.9       |
| <b>Community and personal service workers</b>               | 14.9 | 14.6 | 7.1  | 1.8  | 4.0  | 1.2  | 0.5 | 1.3 | 45.6      |
| 41 Health and welfare support workers                       | 1.8  | 1.5  | 0.5  | 0.1  | 0.5  | 0.3  | 0.1 | 0.1 | 4.9       |
| 42 Carers and aides   | 4.8  | 3.0  | 2.2  | 0.5  | 1.3  | 0.3  | 0.2 | 0.5 | 12.9      |
| 43 Hospitality workers                                      | 6.7  | 6.9  | 2.5  | 0.8  | 1.4  | 0.4  | 0.1 | 0.4 | 19.2      |
| 44 Protective service workers                               | 0.2  | 0.1  | 0.2  | 0.1  | 0.2  | 0.0  | 0.0 | 0.2 | 1.0       |
| 45 Sports and personal service workers                      | 1.6  | 3.1  | 1.6  | 0.3  | 0.7  | 0.1  | 0.1 | 0.1 | 7.6       |
| <b>Clerical and administrative workers</b>                  | 22.2 | 15.3 | 12.4 | 4.8  | 3.6  | 1.4  | 0.4 | 0.7 | 60.9      |
| 51 Office managers and program administrators               | 11.1 | 4.6  | 6.2  | 2.3  | 0.4  | 0.4  | 0.1 | 0.4 | 25.6      |
| 52 Personal assistants and secretaries                      | -    | 0.0  | -    | -    | -    | -    | -   | -   | 0.0       |
| 53 General clerical workers                                 | 3.6  | 2.7  | 2.7  | 1.0  | 1.4  | 0.4  | 0.2 | 0.2 | 12.2      |
| 54 Inquiry clerks and receptionists                         | 3.4  | 5.1  | 1.4  | 0.7  | 0.6  | 0.4  | 0.0 | 0.0 | 11.6      |
| 55 Numerical clerks   | 2.9  | 1.0  | 1.6  | 0.3  | 0.5  | 0.1  | 0.1 | 0.1 | 6.5       |
| 56 Clerical and office support workers                      | -    | -    | -    | -    | -    | -    | -   | -   | -         |
| 59 Other clerical and administrative workers                | 1.2  | 1.8  | 0.5  | 0.5  | 0.7  | 0.0  | 0.0 | 0.0 | 4.9       |
| <b>Sales workers</b>  | 13.0 | 16.8 | 8.8  | 3.7  | 2.7  | 1.4  | 0.3 | 0.5 | 47.2      |
| 61 Sales representatives and agents                         | 2.8  | 0.4  | 1.4  | 0.2  | 0.2  | 0.1  | 0.0 | 0.1 | 5.1       |
| 62 Sales assistants and salespersons                        | 10.2 | 16.4 | 7.4  | 3.6  | 2.5  | 1.2  | 0.3 | 0.4 | 42.1      |
| 63 Sales support workers                                    | -    | -    | -    | -    | -    | -    | -   | -   | -         |
| <b>Machinery operators and drivers</b>                      | 9.2  | 4.2  | 3.8  | 2.0  | 2.7  | 0.4  | 0.2 | 0.2 | 22.6      |
| 71 Machine and stationary plant operators                   | 0.9  | 0.4  | 0.7  | 0.5  | 0.8  | 0.1  | 0.0 | 0.0 | 3.5       |
| 72 Mobile plant operators                                   | 0.9  | 0.2  | 0.5  | 0.1  | 0.2  | 0.0  | 0.0 | -   | 2.1       |
| 73 Road and rail drivers                                    | 3.8  | 1.7  | 1.3  | 0.8  | 0.9  | 0.1  | 0.1 | 0.1 | 8.8       |
| 74 Storepersons   | 3.6  | 1.9  | 1.2  | 0.4  | 0.7  | 0.1  | 0.1 | 0.1 | 8.2       |
| <b>Labourers</b>  | 6.9  | 7.9  | 5.1  | 1.4  | 2.9  | 0.8  | 0.3 | 0.3 | 25.4      |
| 81 Cleaners and laundry workers                             | 1.4  | 0.7  | 1.2  | 0.2  | 0.3  | 0.1  | 0.1 | 0.2 | 4.2       |
| 82 Construction and mining labourers                        | 0.6  | 0.0  | 0.2  | 0.0  | 0.5  | 0.0  | 0.0 | 0.1 | 1.5       |
| 83 Factory process workers                                  | 3.2  | 5.9  | 2.6  | 0.8  | 1.2  | 0.3  | 0.0 | 0.0 | 14.0      |
| 84 Farm, forestry and garden workers                        | 0.9  | 0.6  | 0.5  | 0.2  | 0.4  | 0.2  | 0.1 | 0.0 | 2.9       |
| 85 Food preparation assistants                              | 0.1  | 0.1  | 0.0  | 0.0  | 0.1  | 0.0  | 0.0 | 0.0 | 0.3       |
| 89 Other labourers  | 0.7  | 0.6  | 0.5  | 0.1  | 0.3  | 0.1  | 0.0 | 0.0 | 2.5       |
| <b>Total<sup>5</sup></b>                                    | 96.4 | 89.1 | 63.9 | 22.8 | 27.4 | 8.1  | 2.9 | 4.9 | 315.5     |

A dash (-) represents a true zero figure, with no contracts reported in these categories.

For notes on figures and tables, see page 20.

**Table 18 Commencements by industry skills councils, 12 months ending 31 March 2011, Australia ('000)**

| Industry skills councils                                   | Trades <sup>3</sup> | Non-trades <sup>3</sup> | Total        |
|--|---------------------|-------------------------|--------------|
| AgriFood   | 9.0                 | 11.7                    | 20.7         |
| Community Services and Health                              | 1.5                 | 23.4                    | 24.8         |
| Construction and Property Services                         | 21.9                | 7.4                     | 29.3         |
| ElectroComms and Energy Utilities                          | 12.0                | 0.1                     | 12.1         |
| ForestWorks  | 0.0                 | 0.8                     | 0.8          |
| Government   | 0.0                 | 2.5                     | 2.5          |
| Innovation and Business                                    | 3.5                 | 70.2                    | 73.7         |
| Manufacturing  | 30.0                | 11.5                    | 41.6         |
| Service  | 12.1                | 70.6                    | 82.6         |
| SkillsDMC  | 2.7                 | 3.6                     | 6.3          |
| Transport and Logistics                                    | -                   | 20.8                    | 20.8         |
| Training packages not assigned to industry skills councils | -                   | -                       | -            |
| Training package qualifications total                      | 92.7                | 222.4                   | 315.2        |
| Non-training package qualifications total                  | 0.2                 | 0.2                     | 0.4          |
| <b>Total ('000)</b>  | <b>92.9</b>         | <b>222.7</b>            | <b>315.5</b> |

A dash (-) represents a true zero figure, with no contracts reported in these categories.  
For notes on figures and tables, see page 20.

## Seasonally adjusted commencements

**Table 19 Seasonally adjusted commencements in each quarter, by state/territory, 2006–11 ('000)**

| Quarter        | NSW  | Vic. | Qld  | SA  | WA  | Tas. | NT  | ACT | Australia |
|----------------|------|------|------|-----|-----|------|-----|-----|-----------|
| March 2006     | 18.7 | 19.7 | 13.8 | 5.0 | 5.4 | 1.8  | 0.6 | 1.3 | 66.3      |
| June 2006      | 18.7 | 18.7 | 14.1 | 4.9 | 5.4 | 1.8  | 0.6 | 1.3 | 65.5      |
| September 2006 | 19.0 | 18.3 | 14.5 | 5.0 | 5.5 | 1.9  | 0.6 | 1.4 | 66.1      |
| December 2006  | 19.6 | 18.3 | 15.0 | 5.1 | 5.6 | 2.0  | 0.5 | 1.4 | 67.4      |
| March 2007     | 20.1 | 18.4 | 15.5 | 5.3 | 5.7 | 2.0  | 0.5 | 1.3 | 68.9      |
| June 2007      | 20.3 | 18.0 | 15.9 | 5.3 | 5.7 | 2.0  | 0.6 | 1.2 | 68.9      |
| September 2007 | 20.4 | 17.6 | 15.8 | 5.2 | 5.7 | 2.0  | 0.6 | 1.2 | 68.6      |
| December 2007  | 21.3 | 17.8 | 16.0 | 5.3 | 5.9 | 2.1  | 0.7 | 1.3 | 70.3      |
| March 2008     | 22.8 | 18.4 | 16.2 | 5.4 | 6.1 | 2.2  | 0.7 | 1.2 | 73.1      |
| June 2008      | 23.5 | 18.9 | 16.0 | 5.5 | 6.3 | 2.1  | 0.7 | 1.2 | 74.0      |
| September 2008 | 22.8 | 18.7 | 14.9 | 5.4 | 6.2 | 2.0  | 0.6 | 1.1 | 71.9      |
| December 2008  | 21.3 | 18.1 | 13.6 | 5.2 | 6.0 | 1.9  | 0.6 | 1.2 | 67.9      |
| March 2009     | 20.5 | 17.8 | 13.0 | 5.2 | 5.8 | 1.8  | 0.6 | 1.2 | 65.8      |
| June 2009      | 20.7 | 17.8 | 13.5 | 5.0 | 5.6 | 1.8  | 0.7 | 1.2 | 66.4      |
| September 2009 | 21.4 | 18.3 | 14.3 | 5.1 | 5.8 | 1.7  | 0.7 | 1.2 | 68.6      |
| December 2009  | 22.3 | 19.2 | 14.9 | 5.3 | 6.1 | 1.8  | 0.7 | 1.2 | 71.6      |
| March 2010     | 23.4 | 20.1 | 15.4 | 5.6 | 6.4 | 1.9  | 0.7 | 1.2 | 74.7      |
| June 2010      | 24.3 | 21.0 | 16.1 | 5.8 | 6.7 | 2.1  | 0.7 | 1.2 | 78.0      |
| September 2010 | 24.6 | 22.0 | 16.6 | 5.8 | 7.0 | 2.1  | 0.7 | 1.2 | 80.1      |
| December 2010  | 24.4 | 22.8 | 16.4 | 5.8 | 7.0 | 2.0  | 0.7 | 1.2 | 80.4      |
| March 2011     | 23.9 | 23.0 | 15.9 | 5.8 | 6.9 | 2.0  | 0.8 | 1.2 | 79.5      |

For notes on figures and tables, see page 20.

## Terms

**Australian Qualifications Framework (AQF)** is a national framework of credentials that covers qualifications from certificate I through to a doctoral degree. For more details on the AQF, go to <<http://www.aqf.edu.au>>.

**Australian and New Zealand Standard Classification of Occupations (ANZSCO)** is a classification of the occupation of individuals. The classification is based on the Australian Bureau of Statistics publication, *Australian and New Zealand Standard Classification of Occupations* (1st edition, ABS cat.no.1220.0).

**Cancellations and withdrawals** refers to apprentices and trainees whose contract of training has been terminated prior to a successful completion. Cancellation and withdrawal figures also include contracts which have been transferred, due to a change in employer. 'Transferred' is a new contract status which was historically reported as a cancellation or withdrawal.

**Commencements** refers to apprentices and trainees starting a program of training. The date of commencement is the date that an apprentice or trainee's contract of training is registered or approved under the provisions of the relevant state/territory legislation.

**Completions** refers to apprenticeship or traineeship contracts of training where all of the prescribed requirements have been met.

**Contract status** indicates the status of apprentice and trainee contracts of training, including the commencement, completion, and cancellation/withdrawal of contracts, and apprentices and trainees 'in-training'.

**Existing workers** refers to those apprentices and trainees who were employed by their current employer for more than three months full-time (or 12 months part-time/casual) prior to commencing their training contract.

**Full-time apprentices or trainees** are those whose ordinary hours of employment, including the training component, are at least the usual hours of employment for a full-time employee in that occupation.

**Industry skills councils** are organisations representing particular industries. For more information on industry skills councils, go to <<http://www.isc.org.au>>. For more information on training packages developed by industry skills councils, go to <<http://www.training.gov.au>>.

**In-training** refers to apprentices and trainees who are actively training, at the end of each quarter, under the terms of their training contract, and who have not completed, cancelled, withdrawn or suspended their training, nor had their training contract expire without meeting all of the prescribed requirements of their program.

**Non-trades** refers to those apprentices and trainees employed in occupations outside the trades. 'Non-trades' includes all occupations listed under ANZSCO 1st edition, with the exception of major group 3 (Technicians and trades workers).

**Part-time apprentices or trainees** are defined as those whose ordinary hours of employment, including the training component, are less than full-time. Part-time provisions vary across Australia and across occupations, with 'part-time' defined by each state and territory.

**Seasonal adjustment** refers to a mathematical model used in time series data to smooth out fluctuations attributable to seasonal influences.

**Trades** refers to those apprentices and trainees employed in trades occupations under major group 3 (Technicians and trades workers) of ANZSCO 1st edition.

**Training duration** indicates the amount of time that an apprentice or trainee takes to complete their contract of training from the time of commencement.

**Training packages** are a set of nationally endorsed standards, guidelines and qualifications for training and for recognising and assessing skills. For more details on training packages, go to <<http://www.training.gov.au>>.

**12-month ending series** refers to the total number of commencements, completions and cancellations/withdrawals within a 12-month period (i.e. summing the current quarter with the previous three quarters).

# Technical notes

## Data source

Information included in this publication is, unless stated otherwise, derived from the National Apprentice and Trainee Collection, no.68, June 2011 estimates, which is compiled under the Australian Vocational Education and Training Management Information Statistical Standard (AVETMISS) for Apprentice and Trainee Collection Specifications, Release 6.0, March 2008.

## Estimation procedure

This publication contains figures on apprentice and trainee activity (such as commencements, completions and in-training) based on the date of effect rather than the date of processing. Due to lags in processing, the most recent figures in this publication are estimated (for training activity from September quarter 2009 to March quarter 2011). The estimation method involves weighting recently processed numbers based on average reporting lags. Because estimates are revised for up to seven quarters, figures for the last two years may differ from those published in earlier or in subsequent reports. Further details on the methodology can be found at <http://www.ncver.edu.au/publications/2267.html>.

## Seasonal adjustments

Seasonally adjusted data in this publication are derived from table 2 for in-training, table 4 for commencements, table 6 for completions and table 8 for cancellations and withdrawals. These data are adjusted using X-11-ARIMA methodology and then are 7-point Henderson-smoothed. The seasonally adjusted data used in figures 1–3 are available at <http://www.ncver.edu.au/publications/2386.html>.

## Notes on figures and tables

Due to lags in processing numbers, recent quarter activity is estimated. Proportions (percentages) may be subject to error as they are based on a sample, not the total population. Figures in bold are actual numbers.

See <<http://www.ncver.edu.au/publications/2386.html>> for the standard errors on these estimates.

- 1 The data have been seasonally adjusted and smoothed. For further information please refer to the technical notes on page 19.
- 2 The cancellation and withdrawal figures are inclusive of the new contract status 'transferred', as contract transfers were historically reported as cancellations or withdrawals.
- 3 Non-trades are defined as all major occupations groups 1–2 and 4–8 (ANZSCO 1st edition). Trades are defined as all major group 3 (Technicians and trades workers) (ANZSCO 1st edition).
- 4 The data presented in figure 3 use ANZSCO. ANZSCO has now been back-cast by NCVER to 1994 for reporting purposes. For further information on the methodology, see <<http://www.ncver.edu.au/publications/2266.html>>.
- 5 Unknown data have not been reported, whereas the total includes all contracts, including those with unknown status. Hence, some figures may not sum to the total.



National Centre for Vocational Education Research Ltd  
Level 11, 33 King William Street, Adelaide, South Australia  
PO Box 8288, Station Arcade, SA 5000 Australia  
Telephone +61 8 8230 8400 Facsimile +61 8 8212 3436  
Website [www.ncveredu.au](http://www.ncveredu.au) Email [ncver@ncveredu.au](mailto:ncver@ncveredu.au)