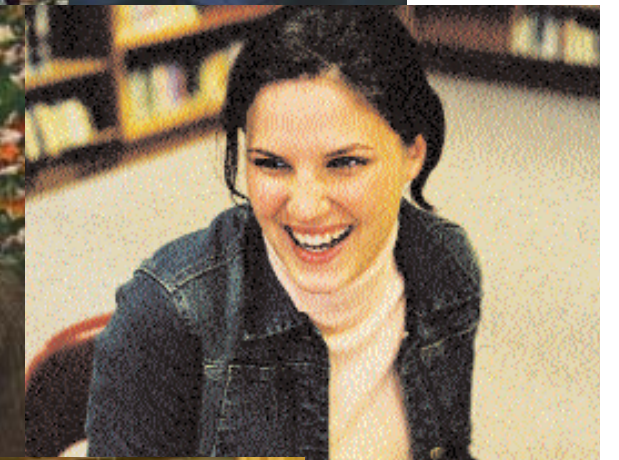


COLLEGE GUIDE

HELPING STUDENTS MAKE THE RIGHT CHOICES

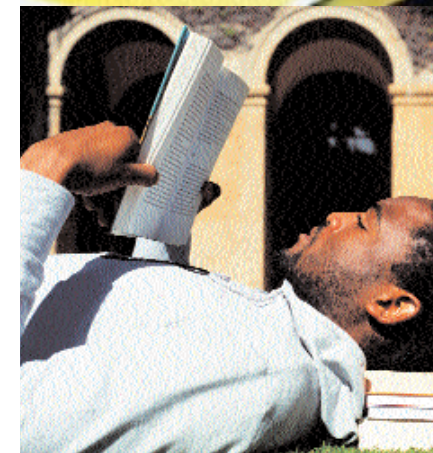


www.coloradomentor.org

www.coloradomentor.org

Your online resource
to Colorado's public colleges and universities,
including all things related to selecting a school, applying for admission,
and exploring financial aid options.

Table of Contents



| | |
|--|-------|
| Governor's Comments | 2 |
| Four-Year Institutions Map and Contact Info | 3 |
| Two-Year Institutions Map and Contact Info | 4 |
| Vocational/Technical Schools Map and Contact Info | 5 |
| So You Think You Want to Go to College? | 6 |
| I Need More Information! | 7 |
| Time to Apply | 8 |
| Applying to a Four-Year Institution | 9-10 |
| Applying to a Community College or Vocational/Technical School | 11 |
| While You Are In High School | 11 |
| Assessment Tests | 11 |
| Show Me the Money | 12 |
| Do I Need Financial Help? | 13 |
| Financial Aid- Next Steps | 14-17 |
| Higher Education- Many Paths to Choose | 18-19 |
| Selecting a Major | 20-25 |
| On the Road Again- All About Transferring | 26-28 |
| Student Profiles and Campus Characteristics | 29-37 |
| Online Learning | 38 |
| Can You Put Your Degree to Work? | 39 |

Visit the Colorado Commission on Higher Education website at www.state.co.us/cche
or the ColoradoMentor website at www.coloradomentor.org for more information.

Executive Director: Tim Foster
1380 Lawrence Street, Suite 1200, Denver, CO 80204, Telephone: 303-866-2723, Fax: 303-866-4266

STATE OF COLORADO

Department of Higher Education
 COLORADO COMMISSION ON HIGHER EDUCATION

Raymond T. Baker, Chair
 Terrance L. Farina, Vice Chair
 Judith Altenberg
 Richard L. Garcia
 Pres Montoya
 Dean L. Quamme
 Gully Stanford
 Greg C. Stevinson
 James M. Stewart
 William Vollbracht
 Judy Weaver



Bill Owens
 Governor

Dear Student,

Pursuing a college or university degree is an investment in your future. It can be a difficult decision process, however, thanks to the many choices available to Colorado students. This guide can help start you on the right path.

The College Guide to Colorado's Public Higher Education Institutions presents a snapshot of important information to guide you in choosing a college or university that is right for you. It helps you compare significant information on all the schools and the communities in which they are located.

Keep in mind that some information—fees, tuition and other financial data—can change after printing. Updated information is regularly available on the Department of Higher Education's website, www.state.co.us/cche_dir/hecche.html or at www.ColoradoMentor.org.

This guide is a tool available to you as you investigate your post-high school education opportunities. You might also want to visit college fairs at your local high schools and talk to college representatives. Try to spend a day on each campus you think you might like to attend. Make an appointment to sit in on some classes. There's no better way to get a sense of what a campus is like.

Choosing a college is one of the most important decisions you will make. This guide is designed to help you make that choice. Good luck!

The Honorable Bill Owens

Governor
 State of Colorado

Tim Foster

Executive Director
 Colorado Commission on Higher Education

Four-Year Institutions



Adams State College (ASC)

208 Edgemont Boulevard
 Alamosa, CO 81102
 Telephone: (719) 587-7011
 Toll-free: (800) 824-6494
www.adams.edu

Colorado School of Mines (CSM)

1500 Illinois
 Golden, CO 80401
 Telephone: (303) 273-3000
 Toll-free: (800) 446-9488
www.mines.edu

Colorado State University (CSU)

Spruce Hall
 Fort Collins, CO 80523-0015
 Telephone: (970) 491-1101
www.colostate.edu

Colorado State University-Pueblo (CSUP)

2200 North Bonforte Boulevard
 Pueblo, CO 81001-4901
 Telephone: (719) 549-2100
www.colostate.pueblo.edu

Fort Lewis College (FLC)

1000 Rim Drive
 Durango, CO 81301-3999
 Telephone: (970) 247-7010
www.fortlewis.edu

Mesa State College (MESA)

1100 North Avenue
 Grand Junction, CO 81501
 Telephone: (970) 248-1020
 Toll-free: (800) 982-6372
www.mesastate.edu

Metropolitan State College of Denver (MSCD)

Campus Box 16, P.O. Box 173362
 Denver, CO 80217-3362
 Telephone: (303) 556-3058
www.mscd.edu

University of Colorado at Boulder (UCB)

Regent Administration Center 125
 44 UCB
 Boulder, CO 80309-0044
 Telephone: (303) 492-1411
www.colorado.edu

University of Colorado at Colorado Springs (UCCS)

1420 Austin Bluffs Parkway
 Colorado Springs, CO 80933-7150
 Telephone: (719) 262-3000
 Toll-free: (800) 990-8227
www.uccs.edu

University of Colorado at Denver (UCD)

P.O. Box 173364,
 Campus Box 167
 Denver, CO 80217-3364
 Telephone: (303) 556-2400
www.cudenver.edu

University of Colorado Health Sciences Center (UCHSC)

4200 East 9th Avenue
 Denver, CO 80262
 Telephone: (303) 372-0000
www.uchse.edu

University of Northern Colorado (UNC)

501 20th Street
 Greeley, CO 80639
 Telephone: (970) 351-1890
www.univnorthco.edu

Western State College (WSC)

Gunnison, CO 81231
 Telephone: (970) 943-0120
 Toll-free: (800) 876-5309
www.western.edu

Many schools have additional locations. You can obtain these locations from the individual school's website.

Two-Year Institutions



Adams State College (ASC)
 208 Edgemont Boulevard
 Alamosa, CO 81102
 Telephone: (719) 587-7011
 Toll-free: (800) 824-6494
 www.adams.edu

Aims Community College (AIMS)
 5401 W. 20th Street
 Greeley, CO 80632
 Telephone: (970) 330-8008
 Toll Free: (800) 301-5388
 www.aims.edu

Arapahoe Community College (ACC)
Main Campus
 5900 S. Santa Fe Drive
 Littleton, CO 80120
 Telephone: (303) 797-4222
 www.arapahoe.edu

Colorado Mountain College (CMC)
Central Administration
 831 Grand Avenue
 Glenwood Springs, CO 81602
 Telephone: (970) 945-8691
 Toll Free: (800) 621-8559
 www.coloradomtn.edu

Colorado Northwestern Community College (CNCC)
 500 Kennedy Drive
 Rangely, CO 81648
 Telephone: (970) 675-2261
 Toll Free: (800) 562-1105
 www.cncc.edu

Community College of Aurora (CCA)
 16000 E. CentreTech Parkway
 Aurora, CO 80011-9036
 Telephone: (303) 360-4700
 www.ccaurora.edu

Community College of Denver (CCD)
 1111 W. Colfax Avenue
 Denver, CO 80204
 Telephone: (303) 556-2600
 ccd.rightchoice.org

Front Range Community College (FRCC)
 3645 W. 112th Avenue
 Westminster, CO 80031
 Telephone: (303) 404-5550
 www.frontrange.edu

Lamar Community College (LCC)
 2401 South Main Street
 Lamar, CO 81052
 Telephone: (719) 336-2248
 www.lcc.ccoes.edu

Mesa State College (UTEC)
 2508 Blichmann
 Grand Junction, CO 81505
 Telephone: (970) 255-2600
 www.mesastate.edu/schools/utec

Morgan Community College (MCC)
 17800 Road 20
 Fort Morgan, CO 80701
 Telephone: (970) 542-3100
 Toll Free: (800) 622-0216
 www.morgancc.edu

Northeastern Junior College (NJC)
 100 College Drive
 Sterling, CO 80751
 Telephone: (970) 521-6600
 Toll Free: (800) 626-4637
 www.njc.edu

Otero Junior College (OJC)
 1802 Colorado Avenue
 La Junta, CO 81050
 Telephone: (719) 384-6831
 www.ojc.edu

Pikes Peak Community College (PPCC)
 5675 South Academy Boulevard
 Colorado Springs, CO 80906-5498
 Telephone: (719) 576-7711
 Toll Free: (800) 456-6847
 www.ppcc.edu

Pueblo Community College (PCC)
 900 West Orman Avenue
 Pueblo, CO 81004
 Telephone: (719) 549-3200
 www.pueblocc.edu

Red Rocks Community College (RRCC)
 13300 West 6th Avenue
 Lakewood, CO 80228-1255
 Telephone: (303) 914-6600
 www.rrcc.edu

Trinidad State Junior College (TSJC)
 600 Prospect Street
 Trinidad, CO 81082
 Telephone: (719) 846-5011
 Toll Free: (800) 621-TSJC
 www.trinidadstate.edu

Many schools have additional locations. You can obtain these locations from the individual school's website.

Vocational/Technical Schools



Delta-Montrose Area Vocational-Technical Center
 1765 U.S. Highway 50
 Delta, CO 81416
 Telephone: (970) 874-7671
 www.dmavtc.tec.co.us/

Emily Griffith Opportunity School
 1250 Welton Street
 Denver, CO 80204
 Telephone: (303) 575-4700
 www.egos-school.com

San Juan Basin Area Vocational-Technical School
 P.O. Box 970
 Cortez, CO 81321
 Telephone: (970) 565-8457
 www.sanjuanbasintechschool.org

T. H. Pickens Technical Center
 500 Airport Boulevard
 Aurora, CO 80011
 Telephone: (303) 344-4910
 www.pickenstech.org

Many schools have additional locations. You can obtain these locations from the individual school's website.



So you think you want to go to college?



When thinking about your future and the decision to go to college, how do you determine which type of school is best for you? Community College? Vocational School? Four-Year College? Research University? While there are many options out there that can make the choice a difficult one, this guide is meant to help you narrow down your selections and choose a school that fits you as an individual.



It's Your Future... Where Are You Headed?

People often ask, "What do you want to do when you grow up?" Well, believe it or not, many of us find the answer to that question while at college. To determine what type of school best fits your goals, you may want to consider what you see yourself doing after college. If you are simply looking for the skills to do a particular job, a vocational program or certificate from a community college may be the right path. If your plans involve receiving a more general education, an associate degree from a community college might do the trick. If you are planning on a professional or academic career, you will need to consider a four-year college or research university.



I Need More Information!

Choosing the type of school you want to attend is an important step. There are many factors that play a role in this decision, such as price, size, location, degrees offered, and financial aid availability. Do your research! Tour college campuses, speak with admissions counselors, and consult with family and friends to determine what characteristics each school offers and how those characteristics fit with what you are looking for. For instance, the distance between your college and home may be a factor, as might the ratio of teachers to students. Asking questions can help you weigh the factors and determine your best fit. Below is a detailed list of questions which will help you decide what type of college is right for you:

ACADEMIC

- What activities and services are available to help students get settled academically and socially during their first year?
- How easy is it to meet with faculty?
- Who teaches the classes that first year students take?
- How big are the classes?
- How big are classes specific to your major?
- Does the school offer study abroad programs?
- Are freshmen provided with an academic counselor?
- What kinds of research opportunities exist for undergraduates?
- Do any of the four-year schools offer two-year programs?
- Does the school offer service learning, internship opportunities, or cooperative education programs?
- What is the school's academic calendar?

STUDENT LIFE

- Are there on-campus student activities available?
- Are freshmen required to live on campus?
- What types of public transportation are available?
- What percentage of students work while attending school?
- What types of special interest programs, clubs, and groups exist at the school?
- Is the campus diverse in culture, religion, and ethnicity?
- Does the college offer varsity, intramural, or club sports?
- Does the campus have a Greek system?
- Is the campus located in an urban or rural setting?
- What types of library resources are available to students?
- Is childcare available on campus?
- Is crime on campus a problem?

FINANCIAL INFORMATION

- What is the overall price of the school (tuition, room and board, books) in conjunction with any financial aid you may have been offered?
- Are there any scholarships available in your field of study?
- How many work-study jobs are available?
- Is off-campus housing available and what is the approximate cost?
- What was the average tuition and fee increase over the last five years?

TECHNOLOGY

- What kind of technology is available to students?
- How many computer labs are available to students?
- How easy is it to use school computers?
- Is there Internet access available in the dormitories or other on-campus student housing?

JOB PLACEMENT

- What kinds of job placement services are available on campus?
- How successful are the college's graduates in finding jobs?

Now that you have considered some of these important questions, you should have a better idea of what kind of college environment suits you best. If you need further help narrowing down the various types of schools available, you might also consider a specific school's demographics or program offerings. For more information on things such as campus characteristics and study programs, take a look at the college facts available on pp. 30-37 and the tables of majors on pp. 20-25.

Time to Apply

4-year



Once you've decided on a type of school, it's time to send out some applications! First identify several schools that match your qualifications (GPA, ACT or SAT test scores, and class rank). Next select a few schools that fall above and below your credentials so you have a range of options. Ask your school guidance counselor, teachers, and parents for advice in making these decisions. They are all valuable resources.

College application forms are available online at www.coloradomentor.org, from the school's own website or on campus, and in your high school counseling office. Be sure to keep copies of everything you submit and realize that you may have to pay a standard application fee.

Deadlines matter when applying to college. Failing to meet a deadline may actually keep you from getting into the school of your choice.

If you already know which one school you want to attend, applying "early decision" may increase your chances of being accepted. These applications are typically due December 1st.

Some colleges don't have a specific deadline for applications, but rather employ a rolling admissions policy. This means that they admit students (assuming they meet the credential requirements) upon receiving the application anytime during the year for the next term.

Once a college has received your application, you will either be accepted, declined, or wait-listed. If you are placed on a wait list, you may be admitted once other accepted students decide to go elsewhere. If you are immediately admitted, be prompt in telling the school whether you plan to accept or decline your admittance.

See the financial aid section (pp.13-17) for additional and important information regarding accepting admittance.

Applying to a Four-Year Institution

Colorado's four-year colleges and research universities have competitive admission standards and a more detailed application process, which usually require the following steps:

- Submit an application form.
- Submit a written essay.
- Pay an application fee of approximately \$25.
- Interview on campus.
- Submit high school transcripts, along with ACT or SAT scores.
- Submit any required portfolio or audition documents.

Standardized Exams and High School GPA Used in the Admissions Process by Colorado Public Four-Year Colleges and Universities

| Test/GPA Range | Institution | Adams S C | Colo Sch of Mines | Colo State U | CSU-Pueblo | Fort Lewis C | Mesa S C | Metro S C of Denver | U Northern Colo | U Colo - Boulder | U Colo - Colo Spr | U Colo - Denver | Western S C |
|---|----------------|-----------|-------------------|--------------|------------|--------------|----------|---------------------|-----------------|------------------|-------------------|-----------------|-------------|
| % of First-time Freshmen with ACT Composite Score of -- | 30 - 36 | 2 | 19 | 7 | 2 | 1 | 2 | 1 | 2 | 11 | 3 | 3 | 1 |
| | 24 - 29 | 16 | 70 | 49 | 19 | 19 | 20 | 14 | 35 | 54 | 34 | 30 | 15 |
| | 18 - 23 | 59 | 11 | 43 | 50 | 55 | 54 | 58 | 57 | 33 | 60 | 53 | 57 |
| | 12 - 17 | 24 | 0 | 1 | 28 | 25 | 24 | 27 | 6 | 2 | 3 | 14 | 27 |
| | 6 - 11 | <1 | 0 | 0 | 0 | 0 | <1 | 0 | 0 | 0 | 0 | 0 | 0 |
| Below 6 | 0 | 0 | 0 | 0 | 0 | 0 | 0 | 0 | 0 | 0 | 0 | 0 | |
| % of First-time Freshmen with SAT I Verbal Score of -- | 700 - 800 | 0 | 10 | 3 | 2 | 1 | 2 | 2 | 3 | 5 | 3 | 3 | 1 |
| | 600 - 699 | 15 | 39 | 24 | 5 | 14 | 12 | 10 | 18 | 31 | 18 | 20 | 12 |
| | 500 - 599 | 30 | 40 | 49 | 44 | 36 | 36 | 34 | 43 | 49 | 42 | 37 | 38 |
| | 400 - 499 | 41 | 10 | 21 | 48 | 39 | 36 | 41 | 31 | 14 | 32 | 31 | 39 |
| | 300 - 399 | 14 | 1 | 2 | 10 | 9 | 14 | 11 | 5 | 1 | 5 | 8 | 10 |
| 200 - 299 | <1 | 0 | 0 | 1 | 1 | <1 | 2 | 0 | 0 | 0 | 1 | 1 | |
| % of First-time Freshmen with SAT I Math Score of -- | 700 - 800 | 0 | 27 | 4 | 0 | 1 | 1 | 2 | 1 | 9 | 3 | 3 | 0 |
| | 600 - 699 | 14 | 53 | 28 | 11 | 13 | 12 | 9 | 16 | 39 | 20 | 24 | 9 |
| | 500 - 599 | 36 | 18 | 46 | 35 | 40 | 38 | 32 | 49 | 41 | 44 | 42 | 34 |
| | 400 - 499 | 41 | 2 | 20 | 36 | 33 | 35 | 42 | 29 | 10 | 31 | 28 | 43 |
| | 300 - 399 | 5 | 0 | 1 | 15 | 12 | 13 | 13 | 5 | <1 | 3 | 4 | 14 |
| 200 - 299 | 2 | 0 | 0 | 3 | 1 | 1 | 2 | 0 | 0 | 0 | 0 | 0 | |
| % of First-time Freshmen with High School Grade Point Average of -- | 3.0 and higher | 59 | 99 | 93 | 56 | 46 | 55 | 41 | 69 | 91 | 83 | 73 | 50 |
| | 2.00 - 2.99 | 39 | 1 | 7 | 42 | 53 | 41 | 56 | 31 | <9 | 17 | 27 | 49 |
| | 1.00 - 1.99 | 2 | 0 | 0 | 2 | 1 | 4 | 3 | 0 | 0 | 0 | <1 | 1 |
| | Below 1.0 | 0 | 0 | 0 | 0 | 0 | 0 | 0 | 0 | 0 | 0 | 0 | 0 |

Note: Percentages may not equal 100 due to rounding
Source: Original data from institution's 2002-2003 Common Data Set

4-year

2-year

Applying to a Community College or Vocational/Technical School

Colorado's community colleges and vocational centers have open enrollment. To attend you just need to contact the school, fill out the necessary paperwork, and register for classes.

Application Deadlines and Fees at Colorado Public Four-Year Colleges and Universities

| Application Type | Institution | | | | | | | | | | | | |
|--|-------------|-------------------|--------------|------------|--------------|-----------|---------------------|-----------------|------------------|-------------------|-----------------|-------------|--|
| | Adams S.C. | Colo Sch of Mines | Colo State U | CSU-Pueblo | Fort Lewis C | Mesa S.C. | Metro S.C of Denver | U Northern Colo | U Colo - Boulder | U Colo - Colo Spr | U Colo - Denver | Western S.C | |
| Admissions Applications | | | | | | | | | | | | | |
| Priority Application Date | None | Apr 15 | None | Mar 1 | None | None | None | None | None | Apr 1 | Jul 22 | May 1 | |
| Application Closing Date | Aug 1 | Jun 1 | Jul 1 | Aug 1 | Aug 1 | * | Aug 15 | Aug 1 | None | Jan 15 | Jul 1 | Aug 1 | |
| Application Fee | \$20 | \$45 | \$50 | \$25 | \$20 | \$30 | \$25 | \$30 | \$50 | \$45 | \$40 | \$25 | |
| Waiver of Fee for Applicants with Financial Need | | | | | | | | | | | | | |
| Yes | X | X | X | X | | X | X | X | X | | X | X | |
| No | | | | | X | | | X | | | | | |
| Financial Aid Applications | | | | | | | | | | | | | |
| Priority Date to File Required Forms | Mar 1 | Mar 1 | Mar 1 | Mar 1 | Feb 15 | Mar 1 | Mar 15 | Mar 1 | Apr 1 | Apr 1 | Mar 31 | Mar 1 | |
| Deadline to File Required Forms | R | R | R | R | R | R | R | R | R | R | R | R | |

R= Rolling Deadline * = One month prior to fall semester, two week weeks prior to spring/summer semesters
Source: Original data from institution's 2002-2003 Common Data Set

Application Deadlines at Colorado Public Two-Year Colleges

| Application Type | Institution | | | | | | | | | | | | | | |
|--|-------------|-------------|-----------------|------------|--------------|--------------|----------------|----------|-----------|-----------------|----------|---------------|-----------|---------------|--------------|
| | Aims CC | Arapahoe CC | Colo Mountain C | Colo NW CC | CC of Aurora | CC of Denver | Front Range CC | Lamar CC | Morgan CC | Northeastern JC | Otero JC | Pikes Peak CC | Pueblo CC | Real Rocks CC | Trinidad S.C |
| Admissions Applications | | | | | | | | | | | | | | | |
| Application Closing Date | None | None | None | None | None | None | None | Sept 11 | None | None | None | None | None | None | None |
| Note: No application fee is charged by these institutions. | | | | | | | | | | | | | | | |
| Financial Aid Applications | | | | | | | | | | | | | | | |
| Priority Date to File Required Forms | Apr 15 | May 1 | Mar 1 | Apr 15 | May 1 | Mar 15 | May 1 | Apr 1 | Jun 16 | Mar 1 | Apr 15 | Mar 31 | Mar 15 | May 1 | May 1 |
| Deadline to File Required Forms | R | Jun 1 | R | R | Jun 15 | R | R | R | R | R | R | R | R | R | June 15 |

R= Rolling Deadline
Source: Original data from institution's 2002-2003 Common Data Set

Relative Importance of Academic and Non-Academic Factors Used in Admission to Colorado Public Four-Year Colleges and Universities

| Admission Factors | Institution | | | | | | | | | | | | |
|------------------------------|-------------|-------------------|--------------|------------|--------------|-----------|---------------------|-----------------|------------------|-------------------|-----------------|-------------|--|
| | Adams S.C. | Colo Sch of Mines | Colo State U | CSU-Pueblo | Fort Lewis C | Mesa S.C. | Metro S.C of Denver | U Northern Colo | U Colo - Boulder | U Colo - Colo Spr | U Colo - Denver | Western S.C | |
| Academic Factors -- | | | | | | | | | | | | | |
| Secondary School Record | V | V | V | V | V | V | I | V | V | V | V | V | |
| Class Rank | C | V | V | I | V | I | C | V | V | V | V | V | |
| Recommendations | C | C | I | C | C | C | C | I | I | C | I | C | |
| Standardized Test Scores | V | I | V | V | V | V | I | V | V | I | V | V | |
| Essay | C | C | I | C | C | C | C | NC | I | C | I | C | |
| Non-Academic Factors -- | | | | | | | | | | | | | |
| Interview | C | C | C | C | C | C | NC | C | NC | NC | C | C | |
| Extracurricular | C | C | C | NC | C | C | NC | C | C | C | C | I | |
| Talent/Ability | NC | C | C | C | C | C | NC | C | C | C | C | I | |
| Character/Personal Qualities | C | NC | C | C | C | C | NC | C | C | C | C | I | |
| Alumni(ae) Relation | NC | NC | C | NC | C | NC | NC | NC | C | C | C | C | |
| Geographical Residence | C | NC | C | NC | C | NC | NC | NC | I | C | NC | NC | |
| State Residency | C | NC | C | NC | C | C | NC | C | I | C | NC | NC | |
| Minority Status | NC | NC | C | C | C | C | NC | C | I | C | NC | NC | |
| Volunteer Work | NC | NC | C | C | C | C | NC | NC | C | NC | C | NC | |
| Work Experience | NC | NC | C | C | C | C | NC | C | C | NC | NC | NC | |

V= Very Important C= Considered
I= Important NC= Not Considered
Source: Original data from institution's 2002-2003 Common Data Set

In October 2003, the Colorado Commission on Higher Education approved a precollegiate curriculum requirement beginning with spring 2008 high school graduates to qualify for regular admission to a Colorado public four-year institution. For more details, go to the CCHE website <http://www.state.co.us/cche> and click on the Admissions button.

While You are in High School

You may be able to get a head start on college classes while still in high school. Check with your high school counselor about enrolling into one of the following programs. Also ask for information about other programs in which your school participates.

- 1. Post-Secondary Enrollment Options Program:** If you are a high school junior or senior, you may take college-level courses and receive both high school and college credit.
- 2. The High School Fast-Track Program:** Seniors in high school who have completed all of their high school graduation requirements may enroll in college courses and receive college credit.

Assessment Tests

If you attend college in Colorado and are seeking a degree, you will be required to take skills assessment tests in the areas of mathematics, writing, and reading. The results from these exams are used to determine your level of college readiness.

If your skills need to be strengthened, you will need to enroll in remedial classes. These courses ensure that you can read, write, and do mathematics at a college level. Many campuses also offer classes to assist you with study skills. Some others offer courses in English as a Second Language (ESL) to help prepare non-English speaking students for college-level work. All in all, these classes, along with the necessary testing, are sure to increase the probability of your academic success.



Show me the Money!

College is an investment in your future that is sure to provide you with more career options down the road. By "investment" we mean that it can be expensive! But don't worry! There are many ways to offset the cost of college including scholarships, grants, loans, work-study programs and financial aid packages. While it may seem like a big expense now, the benefits of earning a college certificate or degree is certain to pay off in the long run.

Do I Need Financial Help?

To determine if you need help in covering the costs of your education:

1. Estimate your anticipated college expenses.
2. Evaluate your financial situation.
3. Determine your need for aid.

The cost of college varies from school to school. Depending on where you're headed, you may want to think about a variety of costs when figuring anticipated college expenses. Expenditures such as books, housing, food, tuition, and miscellaneous fees should all be considered.

If you are dependent on your parents for financial assistance, consider your family's ability to help fund your education. Keep in mind that unusual financial circumstances should not dissuade you from applying for aid, as colleges often account for a variety of factors when assessing a student's aid eligibility. *Even if you think that you are not qualified for receiving aid, you should still apply.*

If you do plan to apply for financial aid, start your research at the same time as the application process. Determining your school and whether or not you can afford it is based both on your possible acceptance and eligibility for aid.

Don't wait to receive admission responses from the schools where you apply. Get the ball rolling as soon as you can! Financial aid applications are typically due during the winter, so you will need to first know the deadline, then apply for aid, and lastly know the amount of aid each college is willing to provide before deciding on a school.

Where You Can Go for Help

To get all of the information needed about the process of applying for financial aid, start by visiting your high school's counseling office, which should have the necessary application information and paperwork. You can also access other financial aid resources at your local public library, on the Internet, or by visiting the financial aid link at www.coloradomentor.org.

No matter which method you use, these resources can help you to:

- Review college cost information (pp. 15-17).
- Research your eligibility for various financial aid programs.
- Read the federal financial aid program documentation on the Department of Education's website at www.ed.gov.
- Request financial aid information on its non-federal programs from each college to which you are applying.

FINANCIAL AID RESOURCES FOR COLORADO STUDENTS

- Governor's Opportunity Scholarships
- Boettcher Scholarships
- Daniels Fund
- Undergraduate Academic-Based Scholarships
- Colorado Nursing Scholarships
- Dependents Tuition Assistance Program
- Colorado National Guard Tuition Assistance Program
- Colorado Grants
- Work-Study Programs
- Loan Programs

For detailed information on these and many more financial aid resources, see your school guidance counselor or visit www.coloradomentor.org



Financial Aid—Next Steps

Filling Out and Submitting Your Financial Aid Forms

Once you have familiarized yourself with the financial aid application process and your own financial situation, begin the most important step: filling out and submitting the required forms.

FAFSA/CSS

Begin by completing the **Free Application for Federal Student Aid** (FAFSA) and the **CSS/Financial Aid PROFILE** forms. The FAFSA form can be filled out online at the United States Department of Education website, www.fafsa.ed.gov. The CSS form, which deals with non-federal aid and is required by some colleges, can be completed at <http://profileonline.college-board.com/index.jsp>.

These forms require that you include your most recent financial information or that of your parents if they are helping to fund your education. To make the process easier, gather all recent financial records, such as income tax returns, W-2 forms, pay stubs, interest statements, home mortgage records, and debt/asset information. These records should relate to the year preceding the academic year for which you are applying.

Because the income information on FAFSA and CSS is cross-referenced with the same information on your IRS forms, you should know which income tax returns you or your parents plan on filing with the federal and state governments on April 15.

Be sure to fill in the form fields accurately, completely, and legibly, providing all of the requested information. Also, be consistent in providing information between forms. Failure to do so could result in a delay in processing your paperwork.

The application is also your opportunity to describe any unusual circumstances or problems that could limit your ability to finance your education. If there is not a place on the application to present your situation, send a letter to the schools where you are applying to make your case.

Remember, do yourself a favor! When submitting these forms, meet all the deadlines or preferred dates in order to achieve optimal aid consideration. Also, keep a photocopy of each form for any needed reference.

After you submit your financial aid forms, reply to any responses or material requests that you receive. Your **Student Aid Report** (SAR), the document which details your eligibility for aid, will arrive within several weeks of your application. If there are any errors, make the appropriate corrections and mail the form back to the return address. If you have completed a CSS/Financial Aid PROFILE, your CSS Acknowledgement will also arrive in the mail. Any necessary corrections to this particular document should be sent directly to the colleges where you are applying. Remember to be prompt in submitting all of your responses.

Receiving Award Letters and Selecting a College

You will begin receiving financial aid award letters in mid spring. The amounts detailed on these letters may be described as “tentative” or “preliminary.”

Do not make your final school selection until you have received a letter from each school where you applied. It is important to be aware of the full award being offered by each school. Once you have received all of your responses, move quickly to secure the monetary package offered by the school of your choice. If you miss the deadline, your aid could be reallocated to another student. If a deadline for a school is approaching and you have not received all of your responses, ask the school for an extension on its aid offer.

Despite the importance of financial aid, do not use the size of a school’s financial aid award as the sole basis for selecting a college. As discussed earlier, your sense of how suitable a school is for you is also an essential factor. You may want to review the characteristic questions on page 7.

Once you have considered all of these factors and assessed the overall value of each school as it meets your needs, examine the award letter from your selected school. Follow the instructions, provide any additional information or materials requested, select a lender if prompted to do so, sign the letter, and return it to the school. Finally, remember to notify the other colleges or universities of your choice to attend another institution.

4-year

Financial Information – Colorado Public Four-Year Colleges and Universities

| 2003-2004 | ASC | CSM | CSU | CSU-P | FLC | Mesa |
|--|----------|----------|----------|----------|----------|----------|
| Tuition, Resident* | \$ 1,798 | \$ 5,700 | \$ 2,908 | \$ 2,289 | \$ 2,020 | \$ 1,855 |
| Mandatory Student Fees | \$ 684 | \$ 733 | \$ 836 | \$ 641 | \$ 769 | \$ 660 |
| Annual Tuition and Fees | \$ 2,482 | \$ 6,433 | \$ 3,744 | \$ 2,930 | \$ 2,789 | \$ 2,515 |
| Room & Board Cost | \$ 5,890 | \$ 6,062 | \$ 5,856 | \$ 5,742 | \$ 5,954 | \$ 6,266 |
| Historical Completion Rate for Full-Time Degree Seeking Students | | | | | | |
| % Completing Bacc. Degree in 4 Years | 13.4 | 30.4 | 31.4 | 11.7 | 9.5 | 9.0 |
| % Completing Bacc. Degree in 5 Years | 26.8 | 60.8 | 57.4 | 22.0 | 22.9 | 20.1 |
| % Completing Bacc. Degree in 6 Years | 29.7 | 64.5 | 62.4 | 26.6 | 28.1 | 27.4 |
| Financial Aid Profile of In-State, Full-Time, Degree Seeking Undergraduate Students from Fiscal Year 2001/2002 | | | | | | |
| % of In-State, Full-Time, Degree-Seeking Undergraduates that Applied for Financial Aid | 96% | 87% | 63% | 85% | 67% | 77% |
| % of Those that Applied and Received Some Financial Grant or Scholarship | 82% | 81% | 65% | 77% | 69% | 77% |
| Avg. Fed. Student Aid Award** | \$ 2,996 | \$ 2,574 | \$ 2,746 | \$ 3,183 | \$ 2,898 | \$ 2,802 |
| Avg. State Student Aid Award** | \$ 1,752 | \$ 2,363 | \$ 2,286 | \$ 2,120 | \$ 2,154 | \$ 1,873 |
| Avg. Student Loan** | \$ 4,413 | \$ 6,407 | \$ 6,215 | \$ 5,904 | \$ 4,975 | \$ 4,873 |
| % of Full-Time, In-State Undergraduates with Student Loans | 57% | 52% | 43% | 57% | 42% | 51% |

| 2003-2004 | MSCD | UNC | UCB | UCCS | UCD | WSC |
|--|----------|----------|----------|----------|----------|----------|
| Tuition, Resident* | \$ 2,202 | \$ 2,519 | \$ 3,192 | \$ 3,024 | \$ 3,027 | \$ 1,783 |
| Mandatory Student Fees | \$ 544 | \$ 722 | \$ 828 | \$ 843 | \$ 498 | \$ 781 |
| Annual Tuition and Fees | \$ 2,746 | \$ 3,241 | \$ 4,020 | \$ 3,867 | \$ 3,525 | \$ 2,564 |
| Room & Board Cost | N/A | \$ 5,782 | \$ 6,754 | \$ 5,824 | N/A | \$ 5,964 |
| Historical Completion Rate for Full-Time Degree Seeking Students | | | | | | |
| % Completing Bacc. Degree in 4 Years | 3.9 | 22.9 | 34.8 | 10.7 | 15.4 | 10.5 |
| % Completing Bacc. Degree in 5 Years | 14.9 | 40.8 | 60.0 | 24.9 | 32.3 | 23.4 |
| % Completing Bacc. Degree in 6 Years | 21.5 | 45.5 | 65.2 | 29.0 | 40.2 | 27.5 |
| Financial Aid Profile of In-State, Full-Time, Degree Seeking Undergraduate Students from Fiscal Year 2001/2002 | | | | | | |
| % of In-State, Full-time, Degree-Seeking Undergraduates that Applied for Financial Aid | 61% | 79% | 66% | 77% | 70% | 75% |
| % of Those that Applied and Received Some Financial Grant or Scholarship | 62% | 58% | 61% | 59% | 59% | 79% |
| Avg. Fed. Student Aid Award** | \$ 2,759 | \$ 2,429 | \$ 3,050 | \$ 2,886 | \$ 3,301 | \$ 2,859 |
| Avg. State Student Aid Award** | \$ 2,217 | \$ 2,170 | \$ 2,506 | \$ 2,626 | \$ 2,699 | \$ 1,812 |
| Avg. Student Loan** | \$ 5,341 | \$ 5,707 | \$ 6,940 | \$ 5,622 | \$ 5,761 | \$ 4,833 |
| % of Full-Time, In-State Undergraduates with Student Loans | 39% | 46% | 38% | 41% | 35% | 49% |

*Many students attend on a part-time basis. Full-time tuition is based on 15 credit hours per term for the academic year.

**Averages are of those students that have some amount of aid or loans.

N/A= Commuter institutions that do not offer Room & Board

Financial Aid

colorado

Financial Information - University of Colorado Campuses

| University of Colorado at Boulder | | | | | |
|--|-----------------------------|---------------------------|--------------------------|-------------|-----------|
| 2003-2004 | All-Other | Business | Engineering | Journalism | Music |
| Tuition, Resident* | \$ 3,192 | \$ 4,764 | \$ 3,853 | \$ 3,264 | \$ 3,264 |
| Mandatory Student Fees | \$ 828 | \$ 828 | \$ 828 | \$ 828 | \$ 828 |
| Room & Board Cost | \$ 6,754 | \$ 6,754 | \$ 6,754 | \$ 6,754 | \$ 6,754 |
| Average Cost for 1 Year | \$ 10,668 | \$ 12,240 | \$ 11,329 | \$ 10,740 | \$ 10,740 |
| University of Colorado at Colorado Springs | | | | | |
| 2003-2004 | Lower Division | Liberal Arts and Sciences | Upper Division | | |
| | | | Business and Engineering | Nursing | Education |
| Tuition, Resident* | \$ 3,024 | \$ 3,174 | \$ 3,297 | \$ 4,500 | \$ 3,090 |
| Mandatory Student Fees | \$ 843 | \$ 843 | \$ 843 | \$ 843 | \$ 843 |
| Annual Tuition & Fees | \$ 3,867 | \$ 4,017 | \$ 4,140 | \$ 5,343 | \$ 3,933 |
| Room & Board Cost | \$ 5,824 | \$ 5,824 | \$ 5,824 | \$ 5,824 | \$ 5,824 |
| University of Colorado at Denver | | | | | |
| 2003-2004 | All Freshmen and Sophomores | Arts & Media | Upper Division | | |
| | | | Business | Engineering | All Other |
| Tuition, Resident* | \$ 3,027 | \$ 3,300 | \$ 3,300 | \$ 3,300 | \$ 3,027 |
| Mandatory Student Fees | \$ 498 | \$ 498 | \$ 498 | \$ 498 | \$ 498 |
| Annual Tuition & Fees | \$ 3,525 | \$ 3,798 | \$ 3,798 | \$ 3,798 | \$ 3,525 |
| Room & Board Cost | N/A | N/A | N/A | N/A | N/A |
| University of Colorado at Health Sciences Center | | | | | |
| 2003-2004 | Dental Hygiene | Nursing | First Year Pharmacy | | |
| | | | | | |
| Tuition, Resident* | \$ 5,666 | \$ 5,730 | \$ 10,000 | | |
| Mandatory Student Fees | \$ 200 | \$ 200 | \$ 200 | | |
| Annual Tuition & Fees | \$ 5,866 | \$ 5,930 | \$ 10,200 | | |
| Room & Board Cost | N/A | N/A | N/A | | |

*The University of Colorado charges different tuition for various programs.

Financial Aid Appeals

Keep in mind that financial aid offers are somewhat negotiable. If you believe that an offer made did not consider your case in full, you may contact a financial aid administrator at your college. He or she may adjust your package. If you still feel that all of the factors in your situation have been inadequately evaluated, you may invoke the appeals process at the school's financial aid office.

Updating your FAFSA and CSS

You must update a new FAFSA and CSS form every year. The amount of your award may vary from year to year, due to changes in aid money available to your college, your personal need or the needs of other students, and variances in your loans outside of the college.

Additional Financial Aid Resources

The United States military can also provide financial assistance, as it offers scholarships at more than 600 schools nationwide. The Reserve Officer Training Corps (ROTC), a widespread military aid program, awards scholarships totaling up to \$60,000. Additional benefits include monthly stipends and book allowances. In return for the military's aid, you must agree to select a major that suits its needs, as well as serve in the National Guard, the Army Reserve, or active duty. For more information on ROTC and other similar programs, visit www.finaid.org/military



2-year

Financial Information - Colorado Public Two-Year Colleges

| 2003-2004 | AIMS | ACC | CMC | CNCC | CCA | CCD | FRCC | LCC |
|--|----------|----------|----------|----------|----------|----------|----------|----------|
| Tuition, Resident * | \$ 1,620 | \$ 1,982 | \$ 2,070 | \$ 1,982 | \$ 1,982 | \$ 1,982 | \$ 1,982 | \$ 1,982 |
| Mandatory Student Fees | \$ 260 | \$ 158 | \$ 180 | \$ 180 | \$ 113 | \$ 124 | \$ 243 | \$ 311 |
| Annual Tuition and Fees | \$ 1,880 | \$ 2,140 | \$ 2,250 | \$ 2,162 | \$ 2,095 | \$ 2,106 | \$ 2,225 | \$ 2,293 |
| Room & Board Cost | N/A | N/A | \$ 6,030 | \$ 4,542 | \$ 5,860 | N/A | N/A | \$ 4,470 |
| Historical Completion Rate for Full-Time Degree Seeking Students | | | | | | | | |
| % Completing Certif. or Assoc. Degree in 3 Years | 14.7 | 19.7 | 19.2 | 26.8 | 14.5 | 16.0 | 17.0 | 31.6 |
| Financial Aid Profile of Full-Time, In-State, Degree Seeking Undergraduate Students from Fiscal Year 2001/2002 | | | | | | | | |
| % of In-State, Full-time, Degree-Seeking Undergraduates that Applied for Financial Aid | 72% | 57% | 44% | 88% | 58% | 71% | 57% | 99% |
| % of Those that Applied and Received Some Financial Grant or Scholarship | 81% | 68% | 84% | 84% | 71% | 84% | 67% | 93% |
| Avg. Fed. Student Aid Award ** | \$ 2,672 | \$ 2,863 | \$ 2,655 | \$ 2,491 | \$ 2,679 | \$ 3,146 | \$ 2,687 | \$ 2,790 |
| Avg. State Student Aid Award ** | \$ 1,550 | \$ 2,240 | \$ 1,663 | \$ 1,580 | \$ 1,946 | \$ 2,451 | \$ 1,988 | \$ 2,074 |
| Avg. Student Loan ** | \$ 2,871 | \$ 3,768 | \$ 3,566 | \$ 3,275 | \$ 3,441 | \$ 3,152 | \$ 2,978 | \$ 3,107 |
| % of Full-Time, In-State Undergraduates with Student Loans | 21% | 21% | 25% | 38% | 20% | 19% | 22% | 24% |

| 2003-2004 | MCC | NJC | OJC | PPCC | PCC | RRCC | TSJC |
|--|----------|----------|----------|----------|----------|----------|----------|
| Tuition, Resident * | \$ 1,982 | \$ 1,982 | \$ 1,982 | \$ 1,982 | \$ 1,982 | \$ 1,982 | \$ 1,982 |
| Mandatory Student Fees | \$ 156 | \$ 593 | \$ 171 | \$ 125 | \$ 234 | \$ 216 | \$ 344 |
| Annual Tuition and Fees | \$ 2,138 | \$ 2,575 | \$ 2,153 | \$ 2,107 | \$ 2,216 | \$ 2,198 | \$ 2,326 |
| Room & Board Cost | N/A | \$ 4,542 | \$ 4,090 | N/A | N/A | N/A | \$ 4,417 |
| Historical Completion Rate for Full-Time Degree Seeking Students | | | | | | | |
| % Completing Certif. or Assoc. Degree in 3 Years | 46.0 | 39.4 | 40.6 | 11.4 | 23.3 | 17.4 | 33.1 |
| Financial Aid Profile of Full-Time, In-State, Degree Seeking Undergraduate Students from Fiscal Year 2001/2002 | | | | | | | |
| % of In-State, Full-Time, Degree-Seeking Undergraduates that Applied for Financial Aid | 82% | 93% | 96% | 67% | 85% | 60% | 95% |
| % of Those that Applied and Received Some Financial Grant or Scholarship | 91% | 80% | 98% | 76% | 84% | 69% | 95% |
| Avg. Fed. Student Aid Award ** | \$ 2,945 | \$ 2,467 | \$ 2,751 | \$ 2,809 | \$ 3,091 | \$ 2,761 | \$ 3,058 |
| Avg. State Student Aid Award ** | \$ 2,832 | \$ 1,565 | \$ 2,364 | \$ 2,551 | \$ 2,199 | \$ 2,071 | \$ 2,606 |
| Avg. Student Loan ** | \$ 3,536 | \$ 2,907 | \$ 3,315 | \$ 3,527 | \$ 3,729 | \$ 3,784 | \$ 3,291 |
| % of Full-Time, In-State Undergraduates with Student Loans | 21% | 40% | 25% | 20% | 33% | 15% | 20% |

*Many students attend on a part-time basis. Full-time tuition is based on 15 credit hours per term for the academic year.

*Aims and CMC charge less for students who reside in their district.

** Averages are of those students that have some amount of aid or loans.

N/A= Commuter institutions that do not offer Room & Board



Higher Education

People pursue higher education for many reasons. For some, the goal is to earn a college degree or certificate. For others, the goal is to take specific courses to update skills, acquire new knowledge, or further their training. Colorado's public institutions offer three kinds of undergraduate awards: certificate, associate, and baccalaureate. Specific programs are listed on pp. 20-25.

Many Paths to Choose

1

Certificate programs

Certificate programs are typically job-oriented in nature and meant for students seeking relatively short training in preparation for going to work. Credit hour requirements vary according to the program and generally range from one semester to two years.

2

Associate degree programs

Associate degree programs consist of either the Associate of Arts (A.A.) or Associate of Science (A.S.) degrees. These programs are for students who intend to complete up to two years of general education or those who plan to enroll in a two-year college and later transfer to a four-year institution. The Associate of Applied Science (A.A.S.) degree combines some general education coursework with vocational training for a specific career.

3

Baccalaureate, or Bachelor degrees

Baccalaureate, or Bachelor degrees, usually involve four or more years of study. Most programs have a general education component taken primarily during the first two years of school, which then complements the more specialized courses in a major. Keep in mind that the time it takes to graduate depends on you. If you enroll part-time or change majors, it may take more than four years to complete your degree. If you take college-level coursework while in high school, it may take you less time.

MAJOR:

The series of related courses in which a student plans to specialize. Classes in one's major are often taken during the junior and senior years.

Selecting a Major

Once you have an idea about what area of study you'd like to major in, make an appointment with a college advisor in that field of interest. Ask about course requirements and electives, as well as what types of jobs are available for graduates in that potential major.

Select your major carefully. Coursework outside your major may or may not count toward the credit hours needed for a degree. Some programs require you to start at a certain time in the school year and enroll full-time. Know what the requirements of your major entail.

Some programs have highly competitive admission standards meaning that only students with the strongest academic credentials are admitted. Admission to a college or university does not guarantee admission to a specific major or program.

The following tables provide an idea of the many majors that are available at Colorado's public colleges and universities. Always

check official college catalogs or websites to identify specific majors or go to www.coloradomentor.org.

Beware of "Diploma Mills"

Any four-year college or university granting degrees in Colorado has to be authorized by the state. Before you respond to any school's ad or offer, be sure that it is authorized and legitimate. Exercise caution and do your research! There are dubious providers called "diploma mills" whose only purpose is to take your money and offer bogus certificates and degrees.

The website www.state.co.us/cche lists all the private institutions, including bible colleges and seminaries, that are authorized to operate in Colorado. The Division of Private Occupational Schools also provides a list of approved occupational and career schools.

Finding a Major at Colorado Public Four-Year Colleges and Universities

| Program Cluster | Examples of Majors in This Cluster That May Be Available** | ASC | CSM | CSU | FJC | Meas | MSCD | UC-B | UC-CS | UC-D | UNC | CSU-P | MSC |
|--|---|------|-----|-----|-----|------|------|------|-------|------|-----|-------|-----|
| Technology and Engineering | Computer Science | | | B | B | B | B | B | B | B | | B | |
| | Technology | | | B | B | C, A | B | B | B | B | | B | |
| Mathematics and Sciences | Communication Technology | | | | | A | | | | | | | |
| | Engineering | | B | | | A | | | | | | | |
| Mathematics | General | | | | | | | | | | | | |
| | Aerospace | | | | | | | | | | | | |
| Biological and Life Sciences | Chemical | | | | | | | | | | | | |
| | Civil | | | | | | | | | | | | |
| Physical Sciences | Electrical | | | | | | | | | | | | |
| | Environmental | | | | | | | | | | | | |
| Environmental Studies/ Natural Resources | Mechanical | | | | | | | | | | | | |
| | Engineering/Physics/Sciences, Geophysical Engineering | | B | | | | | | | | | B | |
| Arts and Humanities | Other Eng. Specializations: Architectural, Computer, Refining, Geological, Industrial, Mining, or Petroleum Engineering | | B | | | | | | | | | | |
| | Mathematics, Statistics, Applied Mathematics | B | | | | | | | | | | | |
| Social and Behavioral Sciences | Biology, Botany, Microbiology, Zoology, Biochemistry, Environmental Science | B | | | | | | | | | | | |
| | Chemistry | B | | | | | | | | | | | |
| Arts and Humanities | Geology | B | | | | | | | | | | | |
| | Physics | B | | | | | | | | | | | |
| Arts and Humanities | Other Physical Sciences: Astronomy, Meteorology, Watershed Science, Natural/Physical Sciences | B | | | | B | | | | | | | |
| | Environmental Studies, Forestry, Fishery, Wildlife Biology | | B | | | | | | | | | | |
| Arts and Humanities | English/Writing | B | | | | | | | | | | | |
| | Speech Communication | B | | | | | | | | | | | |
| Arts and Humanities | Chinese, French, German, Italian, Japanese, Spanish, Classes, Linguistics | B | | | | | | | | | | | |
| | Philosophy, Religious Studies | | B | | | | | | | | | | |
| Arts and Humanities | Art, Fine Arts, Visual Arts | B | | | | | | | | | | | |
| | Music | B | | | | | | | | | | | |
| Arts and Humanities | Theater | B | | | | | | | | | | | |
| | Other Arts: Dance, Fine & Performing Arts, Film Studies, Industrial Design | B | | | | B | | | | | | | |
| Social and Behavioral Sciences | Liberal Arts & Sciences | A, B | | | | A, B | | | | | | | |
| | Social Sciences | B | | | | | | | | | | | |
| Social and Behavioral Sciences | Economics | B | | | | | | | | | | | |
| | History | B | | | | | | | | | | | |
| Social and Behavioral Sciences | Political Science | B | | | | | | | | | | | |
| | Sociology | B | | | | | | | | | | | |
| Social and Behavioral Sciences | Other Social Sciences: Geography, International Affairs, Behavioral Science | B | | | | | | | | | | | |
| | Anthropology | B | | | | | | | | | | | |

A= Associate Level, usually involving two years of study; B= Baccalaureate Level, usually involving four years of study; C= Certificate Level, usually involving one year of study.
 ** Majors listed here illustrate options within a program cluster that may be available at an identified institution. Check the institution's catalog or website for the specific majors offered at the institution. Also keep in mind that some majors can be found in more than one cluster, depending on the institution's emphasis in a program. For example, speech could be offered as a part of Communications, English or Performing Arts cluster.

Finding a Major at Colorado Public Four-Year Colleges and Universities

| Program Cluster | Examples of Majors in This Cluster That May Be Available** | ASC | CSM | CSU | FJC | Meas | MSCD | UC-B | UC-CS | UC-D | UNC | CSU-P | MSC |
|----------------------|--|--|-----|-----|-----|------|------|------|-------|------|-----|-------|-----|
| Professional Studies | Psychology | B | | B | B | B | B | B | B | B | | B | |
| | Regional/Ethnic/Cultural Studies | | | C | B | | | | | | | | |
| Professional Studies | Multi/Interdisciplinary Studies | | | | B | | | | | | | | |
| | Agriculture | | | B | A | | | | | | | | |
| Professional Studies | Parks/Recreation/Fitness | B | | B | B | B | B | B | B | B | | B | |
| | Business | B | | B | B | A, B | B | B | B | B | | B | |
| Professional Studies | Accounting | | | B | B | B | B | B | B | B | | B | |
| | Other Business Specializations: Finance, Marketing, Business Economics, Hospitality & Travel Administration, Restaurant/Resort Management | | | B | B | B | B | B | B | B | | B | |
| Professional Studies | Landscape Architecture, Environmental Design, Land Use | | | B | | | | | | | | | |
| | Communication, Journalism, Mass Communication, Technical Communications | | | B | B | B | B | B | B | B | | B | |
| Professional Studies | Nutrition/Food Science, Dietetics, Culinary Arts, Apparel/Merchandising, Gerontology | | | B | | C, A | | | | | | | |
| | Aviation Technology/Management | | | | | | | | | | | | |
| Professional Studies | Social Work, Human Services, Criminology | | | B | | A | | | | | | | |
| | Nursing | | | B | | B | | | | | | | |
| Professional Studies | Audiology, Hearing Sciences, Speech/Language Pathology | | | B | | B | | | | | | | |
| | Occupational Therapy, Rehabilitative Services | | | B | | A | | | | | | | |
| Professional Studies | Other Health Related Specializations: Medical Science, Radiologic Technology, Dental Hygiene, Health Care Mgt., Health Care Services, Pharmacy, Environmental Health | | | B | | A | | | | | | | |
| | Teacher Education | Note: For information on specific majors and other teacher education requirements, contact the institution you want to attend. | | | | | | | | | | | |
| Vocational Training | Construction Trades | | | | | C | | | | | | | |
| | Electric Lineworker | | | | | | | | | | | | |

Finding a Major at Colorado Public Two-Year Colleges

| Program Cluster | Examples of Majors in This Cluster That May Be Available ** | Colorado Public Two-Year Colleges | | | | | | | | | | | | | | |
|------------------------------------|--|-----------------------------------|-----------|-----------------|----------------------|--------------|--------------|----------------|----------|-----------|-----------------|----------|---------------|-----------|--------------|--------------|
| | | Aims CC | Apache CC | Colo Mountain C | Colo Northwestern CC | CC of Aurora | CC of Denver | Front Range CC | Lamar CC | Morgan CC | Northeastern JC | Otero JC | Pikes Peak CC | Pueblo CC | Red Rocks CC | Trinidad SJC |
| Arts, Humanities | Liberal Arts & Sciences | A | A | A | A | A | A | A | A | A | A | A | A | A | A | A |
| | | A | A | A | A | A | A | A | A | A | A | A | A | A | A | A |
| Vocational and Technical Education | Computer Systems | C,A | C,A | C,A | C,A | C,A | C,A | C,A | C,A | C,A | C,A | C,A | C,A | C,A | C,A | C,A |
| | Engineering-Related Technologies | C,A | A | A | A | C,A | C,A | C,A | C,A | C,A | C | C,A | C,A | C,A | C,A | C,A |
| | Applied Technology | A | A | A | A | A | A | A | A | A | A | A | A | A | A | A |
| | Agriculture-Related Business and Sciences | C,A | A | C | A | A | C,A | C,A | C,A | C,A | C | C,A | C,A | C,A | C,A | C,A |
| | Aviation | C,A | | C,A | | | | | | | | | | | A | |
| | Business Administration | C,A | C,A | C | C,A | C,A | C,A | C,A | C,A | C,A | C | C | C | C | C | C |
| | Child Care | C,A | C | A | C | C,A | C,A | C,A | C,A | C | C | C | C | C | C | C |
| | Construction Trades | C | A | C | | | | | | | | | | | | |
| | Conservation and Parkland Management | | | C | A | | | | | | | | | | | |
| | Cosmetic Services | | | C | | C | | | | | | | | | | C |
| Culinary Arts/Dietetics | | C | A | | | | | | | | | | | C,A | C,A | |
| Design | Graphic Design, Interior Design, Photography, Multimedia Arts, Jewelry, Visual Communication | C,A | C,A | | | | | | | | | | | | | |

A= Associate Level, usually involving two years of study; B= Baccalaureate Level, usually involving four years of study; C= Certificate Level, usually involving one year of study. **Majors listed here illustrate options within a program cluster that may be available at an identified institution. Check the institution's catalog or website for the specific majors offered at the institution. Also keep in mind that some majors can be found in more than one cluster, depending on the institution's emphasis in a program. For example, speech could be offered as a part of Communications, English or Performing Arts cluster.

Finding a Major at Colorado Public Two-Year Colleges

| Program Cluster | Examples of Majors in This Cluster That May Be Available ** | Colorado Public Two-Year Colleges | | | | | | | | | | | | | | |
|------------------------------------|---|---|-----------|-----------------|----------------------|--------------|--------------|----------------|----------|-----------|-----------------|----------|---------------|-----------|--------------|--------------|
| | | Aims CC | Apache CC | Colo Mountain C | Colo Northwestern CC | CC of Aurora | CC of Denver | Front Range CC | Lamar CC | Morgan CC | Northeastern JC | Otero JC | Pikes Peak CC | Pueblo CC | Red Rocks CC | Trinidad SJC |
| Vocational and Technical Education | Drafting | C,A | C,A | | | | | | | | | | | | | |
| | Health-Related Professions | Nursing | A | A | A | A | A | A | A | A | A | A | A | A | A | A |
| | | Practical Nursing | C,A | C | C | C | C | C | C | C | C | C | C | C | C | C |
| | Health-Related Professions | Health Care Support Technician | C | C | C | C | C | C | C | C | C | C | C | C | C | C |
| | | Nurse Assistant/Health Aide | C | C | C | C | C | C | C | C | C | C | C | C | C | C |
| | | Emergency Medical Training | C | C | C | C | C | C | C | C | C | C | C | C | C | C |
| | | Dental Assisting/Hygiene | C,A | C | A | A | A | C,A | C | C | C | C | C | C | C | C |
| | | Interpreter Preparation; Educational Interpretation | C,A | C,A | | | | | | | | | | | | |
| | | Medical Office Tech, Health Information Tech | A | A | | | | | | | | | | | | |
| | | Occupational Therapy Asst | C | C | C | C | C | C | C | C | C | C | C | C | C | C |
| Ophthalmic Technician | | C | A | | | | | | | | | | | | | |
| Legal Studies | Paralegal, Legal Assistant, Correctional Officer | C,A | | A | C,A | C,A | C | | | | | | | | | |
| | Library | | | | | | | | | | | | | | | |
| Mechanics and Repairs (Auto) | Automotive Technology, Auto Mechanics, Automotive & Diesel Technician | C,A | C,A | | | | | | | | | | | | | |
| | Metal Workers | C,A | | | | C | | | | | | | | | | |
| Mortuary Science | Mortician | A | | | | | | | | | | | | | | |
| | Protective Services | C,A | C,A | C | C,A | | | | | | | | | | | |
| Recreation | Recreation Assistant, Fitness Technology | C,A | C | C | C | C | C | C | C | C | C | C | C | C | C | |

Finding a Program at Colorado's Vocational/Technical Schools

| Program Cluster | | Examples of Majors in This Cluster That May Be Available** | Delta-Montrose Vocational-Technical Center | Emily Griffith Opportunity School | Pikens Tech Center | San Juan Basin Technical School | |
|------------------------------------|--|---|--|-----------------------------------|--------------------|---------------------------------|---|
| General Education | Liberal Arts & Sciences | English as a Second Language Adult Basic Education High School and Continuing Ed (GED) | X | X X X | | | |
| | Agriculture-Related Business and Sciences | Agricultural Business Management Agriculture/Industrial Mechanics Horticulture | X | | X | X | |
| Vocational and Technical Education | Aircraft Training | Aircraft General Mechanics Airframe Mechanics Powerplant Private Pilot/Simulator Avionics Accident Investigation | | X X X X X | | | |
| | Applied Technology | Clock Repair Electronics Technology Environmental Technologies Professional Photography | | X | X X X | X | |
| | Business | | Accounting Technician | X | X | X | X |
| | | | Administrative Clerk/Receptionist | | X | | |
| | | | Administrative Support | | X | | |
| | | | Administrative Assistant | X | X | X | X |
| | | | Basic Office Skills | | X | | |
| | | | Business & Computer Technology | X | X | X | X |
| | | | Business Fundamentals | | | | X |
| | | | Business Office Administration | X | | | X |
| | | | Executive Assistant | | | | X |
| | | | Hospitality Management | | | | X |
| | Marketing | | | | X | | |
| Microsoft Office User Specialist | | X | | X | | | |
| Legal Secretary | | | X | | | | |
| Office Computer Technician | X | | | | | | |
| Real Estate Associate | X | | | | | | |
| Real Estate Broker | | X | | | | | |
| Real Estate Appraiser | | X | | | | | |
| Child Care | Child Development Associate (CDA) Early Childhood Professions (ECP) | X | X | | | | |
| Communications | Broadcast Media Graphic Communications | | | X | X | | |
| Computer Systems | | Computer Network Technology | X | X | X | | |
| | | A+ Certification | X | X | | | |
| | | Cisco Network Associate | X | X | X | X | |
| | | Database Administrator | | X | | | |
| | | Database Developer | | X | | | |
| | | Desktop Support | | X | | X | |
| | | Digital Design Technology | | | | X | |
| | | Geographic Information Systems (GIS) | | X | | | |
| | | Microsoft Certified Systems Administrator (MCSA) Certification | | X | | | |
| | | Microsoft Certified Systems Engineer (MCSE) Certification | | X | | | |
| | | Multi-Media Technologies/Desktop Publishing | | | | X | |
| Web Page Developer | | X | X | | | | |
| Web Programmer | | X | | | | | |
| Construction Trades | | Blueprint Reading for Construction | X | | X | | |
| | | Carpentry and Cabinetmaking & Millwork | | | | | |
| | | Construction | | | | X | |
| | | Electrician Occupations | | | X | | |
| | | HVAC | | X | X | | |
| | | Machine Lathe and CNC Tool Operator | | X | X | X | |
| Welding | X | X | X | X | | | |

Vocational-Technical Education

Vocational-technical centers offer individual courses, certificates, and associate degree programs in occupational and technical areas. They also teach basic skills that prepare you for a particular occupation or retraining. Some examples of programs offered in the vo-tech arena include floral design, pilot training, cosmetology courses, and automotive work.

Finding a Program at Colorado's Vocational/Technical Schools

| Program Cluster | | Examples of Majors in This Cluster That May Be Available** | Delta-Montrose Vocational-Technical Center | Emily Griffith Opportunity School | Pikens Tech Center | San Juan Basin Technical School |
|------------------------------------|--|--|--|-----------------------------------|--------------------|---------------------------------|
| Vocational and Technical Education | Cosmetic Services | Barber/Styling | | X | X | |
| | | Cosmetology | X | X | X | |
| | | Hair Styling | | X | X | |
| | | Manicure | X | X | X | |
| | Culinary Arts/ Dietetics | Cake Decorating | | X | | |
| | | Culinary Arts and Restaurant Food Service | | X | | |
| | Custodial / Property Mgt | Custodial Training | | X | | |
| | | Property Maintenance Technician | | | X | |
| | Design | Graphic Design | | X | | X |
| | | Floral Design | | X | | |
| | Drafting | Technical Drafting and AutoCAD | X | X | X | |
| | | Architectural Drafting | X | | | |
| | | Civil Drafting | X | | | |
| | | Digital Electronics Drafting | X | | | |
| | | Mechanical Drafting | X | | | |
| | Emergency Medical Services | CPR | X | | | X |
| | | Basic Life Support | X | | | |
| Emergency Medical Technician | | X | | | X | |
| First Responder | | X | | X | X | |
| Family Studies | Adult and Consumer Family Studies | | X | | | |
| Fashion & Sewing | Fashion Design/Professional Sewing | | X | | | |
| | Upholstering | | X | | | |
| Fitness | Fitness Trainer | | X | | | |
| Health-Related Professions | | Medical Administrative Assistant | X | | X | X |
| | | Licensed Practical Nurse | X | X | X | |
| | | Certified Nurses Aide | X | X | X | X |
| | | Dental Aide | | X | | |
| | | Dental Assistant | | X | X | |
| | | Dental - Restorative and Prosthodontics | | | X | |
| | | Dispensing Opticianry | | X | | |
| | | Emergency Medical Technician | | X | | |
| | | Health Unit Clerk | | X | | |
| | | Home Health Aide | | X | | |
| | | Medical Assistant | | X | | |
| | | Medical Coding Online | | X | | |
| | | Medical Transcription Online | | X | | |
| Med. Prep. | | | | X | | |
| Post-PN IV Therapy | | | | X | | |
| Respiratory Care | | | | X | | |
| Mechanics and Repairers | Automotive | | X | X | X | |
| | Automotive Collision Repair Technology | | X | X | | |
| | Diesel | | | X | X | |
| | Sport Vehicle Technology | | | X | | |
| Mining | Mine Safety Training | X | | | | |
| Public Safety | Police Academy | X | | | | |
| | Corrections | X | | | | |
| | Criminal Justice | X | | | | |
| | Fire Science Technology | | | | X | |

Programs vary in length. Some programs offer AAS or other degrees, many offer certificates or prepare students for certification or licensing.

**Majors listed here illustrate options within a program cluster that possibly may be available at an identified institution. Check the institution's catalog or website for the specific majors offered at the institution. Also keep in mind that some majors can be found in more than one cluster, depending on the institution's emphasis in a program. For example, computer-related programs could be offered as part of a business or computer systems cluster.



On the Road Again

Transferring To Another College. In Colorado, a transfer student is someone who has enrolled in college courses at one school and decides to apply for admission to another. Provided you meet certain conditions, all Colorado public institutions will accept the transfer credits from your initial school. On the next page is a list of tips you should consider if you are thinking about transferring.

All About Transferring

TIPS ON TRANSFERRING

- Request a copy of the transfer guidelines for Colorado public institutions from your academic advisor.
- Obtain an official transcript of the courses you have completed.
- Be sure to check with the school you wish to attend so you are clear about which credits will transfer. Some transfer credits accepted by an institution may not count toward an academic department's graduation requirements.
- Remember that institutions may require a minimum grade before the course is accepted for transfer credit.
- The transfer institution may not accept credits earned at a school which is unaccredited by the North Central Association of Colleges (NCA). A school's catalog will indicate if an institution holds NCA approval.
- Some programs set limits on the number of transfer hours accepted toward the completion of a degree. Check college catalogs and make an appointment with a transfer evaluator in the registrar's office or your academic advisor about the possible limitations of transferring.
- Remedial and vocational courses do not transfer.
- Credit earned through Advanced Placement and International Baccalaureate exams may be re-evaluated by the transfer institution.

Transferring made easy—gtPathways

Colorado has a statewide program called “gtPathways.” It’s designed so you can automatically transfer the specified general education courses you have successfully completed (C- or better) at one of Colorado’s public colleges or universities to another. The classes are guaranteed to count for credit once you’ve been accepted for transfer. In fact, up to 35-37 credit hours of these general education courses will count toward the general education or graduation requirements for any liberal arts, science associate, or bachelor’s degree program.

More than 250 general education courses are currently approved for statewide guaranteed transfer. New courses for gtPathways are approved and added to the list each January.

Certain restrictions regarding successful course completion and the date of gtPathways course approval apply to this transfer program.

For more information on gtPathways and to look at a list of approved courses, visit the Colorado Commission on Higher Education website at www.state.co.us/cche and click on gtPathways.





Transferring From a Two-Year Institution to a Four-Year Institution

Without Completing an Associate's Degree

If you transfer from a two-year school to a four-year school before completing your associate's degree, you are eligible for participation in gtPathways. In addition to those courses approved by gtPathways, a four-year institution may also accept other successfully completed courses.

The best way for you to ensure that your coursework will transfer to a four-year institution and is appropriate for your intended major is to visit your initial school's transfer advisor. Advisors can help you obtain and review a transfer guide from the four-year institution where you plan to go. They can also provide advice about your intended major. Please be aware that the four-year institution may have additional general education course requirements above and beyond those of your two-year institution.

After Earning an Associate's Degree

If you transfer from a two-year school to a four-year school after earning an Associate of Arts or Associate of Science degree and completing 35-37 credits of statewide guaranteed general education courses, you will have a greater advantage over other transferees. First, up to 60 credit hours of your A.A. or A.S. degree are guaranteed to transfer to a four-year school once you are accepted for admission. Secondly, you should be able to finish a Bachelor of Arts or Bachelor of Science degree within another 60 credit hours.

See your transfer advisor for a list of applicable degrees.

Transferring From One Four-Year Institution to Another Four-Year Institution

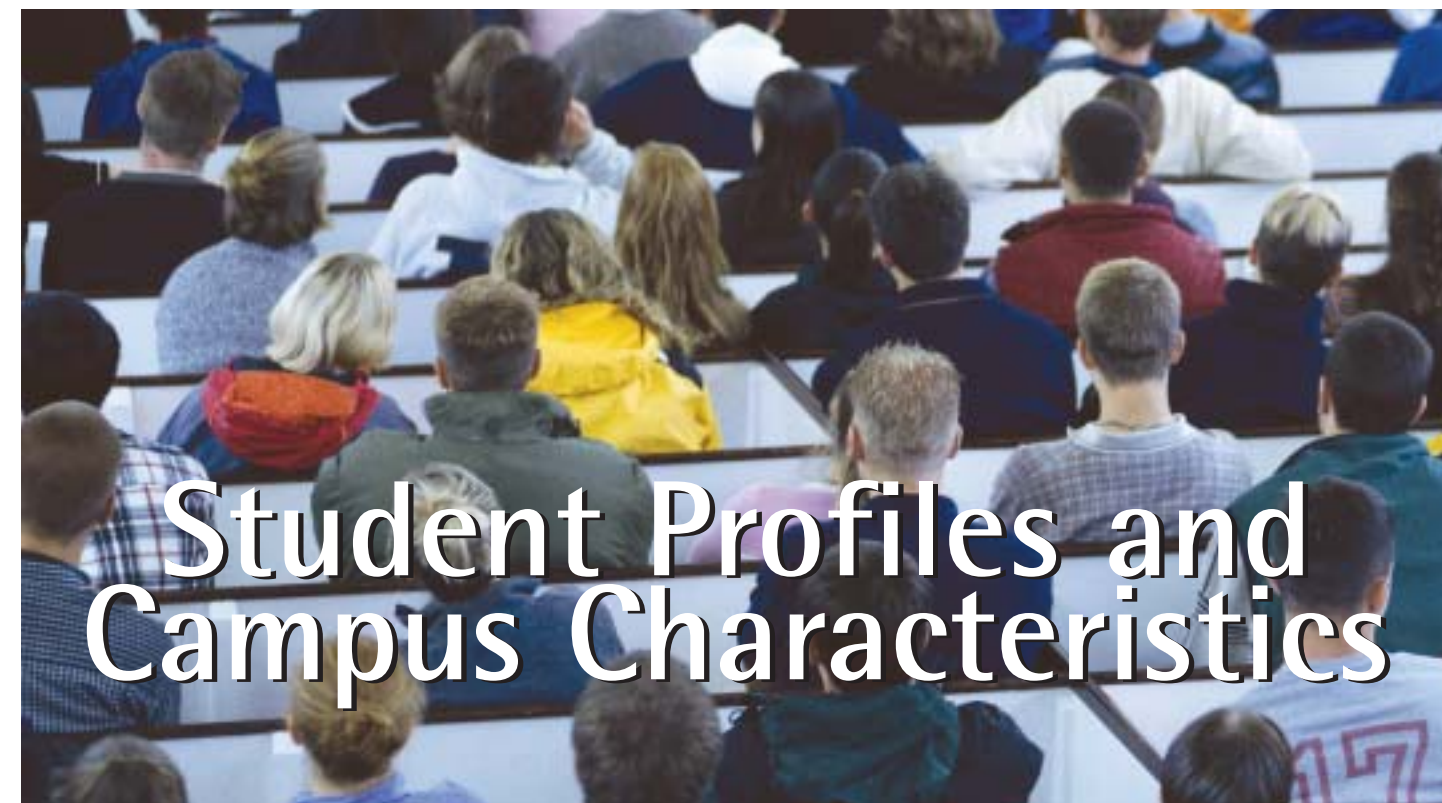
If you are transferring from one four-year school to another, up to 35-37 credits of guaranteed general education courses that you successfully complete will be accepted toward a liberal arts or sciences degree at all four-year public institutions in Colorado. Other coursework may also be accepted on a course-by-course basis by the receiving institution.

Your best chance for completing a successful transfer and retaining as many credits as possible is to contact the college or university you're thinking of moving to for a transfer evaluation of your credits. Each four-year college admissions office has information on transferring credits and degree program requirements.

Transferring For a Professional Degree

Together the state's public institutions have established transfer agreements for specific professional degree programs in business, engineering, and nursing. (The schools call them "statewide articulation agreements.") Other programs may be added in the future.

Contact your school's registrar or transfer coordinator for more information on statewide articulation agreements. For more information on selecting a transfer school that fits your needs, visit www.coloradomentor.org.



Student Profiles and Campus Characteristics

Every school in Colorado is unique. The following pages provide specific information on Colorado's public colleges and universities such as class size, the ratio of men to women, and available student activities. These charts will help you get a sense of the varied characteristics of each school and its students. They also allow you to compare and contrast one school to another. For more information and comparative views, visit www.coloradomentor.org and click on the "Selecting a Campus" link.

Undergraduate Class Size at Colorado Public Four-Year Colleges and Universities – Fall 2002

| Institution | Adams S C | Colo Sch of Mines | Colo State U | CSU-Pueblo | Fort Lewis C | Mesa S C | Metro S C of Denver | U Northern Colo | U Colo – Boulder | U Colo – Colo Spr | U Colo – Denver | Western S C |
|---|-----------|-------------------|--------------|------------|--------------|----------|---------------------|-----------------|------------------|-------------------|-----------------|-------------|
| Total Undergraduate Class Sections | 443 | 426 | 2,564 | 578 | 753 | 1,070 | 2,193 | 1,357 | 2,954 | 888 | 784 | 462 |
| Percent of Class Sections with Undergraduate Enrollment of -- | | | | | | | | | | | | |
| Fewer than 10 | 23 | 17 | 11 | 17 | 18 | 18 | 8 | 7 | 14 | 15 | 12 | 14 |
| 10 - 19 | 28 | 23 | 28 | 26 | 31 | 28 | 26 | 21 | 32 | 23 | 27 | 21 |
| 20 - 29 | 20 | 19 | 26 | 28 | 31 | 27 | 37 | 29 | 21 | 28 | 21 | 30 |
| 30 - 39 | 14 | 23 | 11 | 16 | 11 | 14 | 16 | 18 | 11 | 11 | 15 | 23 |
| 40 - 49 | 9 | 10 | 7 | 6 | 5 | 6 | 7 | 9 | 6 | 12 | 12 | 11 |
| 50 - 99 | 6 | 5 | 10 | 7 | 4 | 7 | 6 | 14 | 9 | 9 | 12 | 1 |
| 100 or More | 0 | 3 | 8 | <1 | 0 | <1 | <1 | 2 | 7 | 2 | <1 | 0 |

Note: Percentages may not equal 100 due to rounding
 Source: Original data from institution's 2002-2003 Common Data Set

Crime Data for Main Campuses of Colorado Public Four-Year Colleges and Universities

| Institution | Adams S C | Colo Sch of Mines | Colo State U | Colorado State U - Pueblo | Fort Lewis C | Mesa S C | Metropolitan S C of Denver** | U of Northern Colo | UC - Boulder | UC - Colo Springs | UC - Denver** | UC-Health Sciences Center | Western State College |
|--|-----------|-------------------|--------------|---------------------------|--------------|----------|------------------------------|--------------------|--------------|-------------------|---------------|---------------------------|-----------------------|
| Fall 2002 Enrollment | 2,613 | 3,385 | 25,155 | 4,054 | 4,349 | 5,569 | 19,098 | 11,407 | 29,115 | 7,449 | 12,062 | 2,547 | 2,330 |
| Three-Year Avg Criminal Offenses Per 1,000 Students Against -- | | | | | | | | | | | | | |
| Person | 2 | 1 | 1 | <1 | 1 | <1 | <1 | <1 | <1 | <1 | <1 | 2 | 2 |
| Property | 5 | 3 | 2 | 3 | 6 | 3 | <1 | 2 | 6 | 1 | <1 | 7 | 7 |
| Three-Year Avg Arrests Per 1,000 Students for Violations of -- | | | | | | | | | | | | | |
| Liquor Law | 2 | 9 | 11 | 1 | 8 | 5 | <1 | 7 | 6 | 9 | <1 | 1 | 8 |
| Drug Abuse | 2 | 2 | 3 | 1 | 1 | 1 | <1 | 2 | 2 | 2 | <1 | 32 | 10 |
| Weapons | 0 | <1 | <1 | <1 | 0 | 0 | <1 | <1 | <1 | <1 | <1 | 8 | <1 |

**Statistics are for the three institutions sharing the Auraria Higher Education Center: Community College of Denver, Metropolitan State College of Denver, and University of Colorado-Denver.
 Criminal offenses against a person include murder/non-negligent manslaughter, negligent manslaughter, forcible sex offenses, robbery, and aggravated assault.
 Criminal offenses against property include burglary, motor vehicle theft, and arson.
 Source: Office of Post Secondary Education website, www.ope.ed.gov/security, August 2003

Undergraduate Class Size at Colorado Public Two-Year Colleges – Fall 2002

| Institution | Alms CC | Arapahoe CC | Colo Mountain C | Colo Northwestern CC | CC of Aurora | CC of Denver | Front Range CC | Lamar CC | Morgan CC | Northeastern JC | Otero JC | Pikes Peak CC | Pueblo CC | Red Rocks CC | Trinidad SJC |
|---|---------|-------------|-----------------|----------------------|--------------|--------------|----------------|----------|-----------|-----------------|----------|---------------|-----------|--------------|--------------|
| Total Undergraduate Class Sections | 1,271 | 1,186 | 1,072 | 593 | 646 | 740 | 2,360 | 247 | 342 | 547 | 358 | 1,621 | 866 | 3,959 | 748 |
| Percent of Class Sections with Undergraduate Enrollment of -- | | | | | | | | | | | | | | | |
| Fewer than 10 | 51 | 19 | 35 | 64 | 26 | 28 | 25 | 33 | 57 | 37 | 51 | 31 | 33 | 24 | 67 |
| 10 - 19 | 31 | 42 | 50 | 25 | 45 | 36 | 22 | 49 | 31 | 40 | 25 | 37 | 38 | 49 | 25 |
| 20 - 29 | 13 | 28 | 14 | 9 | 26 | 30 | 19 | 16 | 10 | 15 | 13 | 30 | 25 | 19 | 5 |
| 30 - 39 | 3 | 8 | 1 | <1 | 3 | 5 | 19 | 2 | <1 | 5 | 6 | 2 | 3 | 2 | 2 |
| 40 - 49 | <1 | 2 | <1 | <1 | <1 | <1 | 8 | 0 | <1 | 0 | 3 | <1 | 1 | 1 | <1 |
| 50 - 99 | <1 | 1 | <1 | 0 | <1 | <1 | 5 | 0 | 0 | 1 | 2 | <1 | <1 | 4 | <1 |
| 100 or More | <1 | 0 | 0 | 0 | 0 | 0 | <1 | 0 | 0 | 0 | 0 | 0 | 0 | 0 | 0 |

Note: Percentages may not equal 100 due to rounding
 Source: Original data from institution's 2002-2003 Common Data Set

Crime Data for Main Campuses of Colorado Public Two-Year Colleges

| Institution | Alms CC | Arapahoe CC | Colo Mountain C | Colo Northwestern CC | CC of Aurora | CC of Denver** | Front Range CC | Lamar CC | Morgan CC | Northeastern JC | Otero JC | Pikes Peak CC | Pueblo CC | Red Rocks CC | Trinidad JC |
|--|---------|-------------|-----------------|----------------------|--------------|----------------|----------------|----------|-----------|-----------------|----------|---------------|-----------|--------------|-------------|
| Fall 2002 Enrollment | 7,081 | 7,843 | 6,816 | 2,052 | 5,097 | 7,924 | 14,599 | 1,171 | 1,627 | 3,628 | 1,547 | 10,444 | 5,129 | 7,389 | 2,196 |
| Three-Year Avg Criminal Offenses Per 1,000 Students Against -- | | | | | | | | | | | | | | | |
| Person | 0 | 0 | <1 | 0 | <1 | <1 | <1 | 0 | 0 | 0 | 0 | <1 | <1 | <1 | <1 |
| Property | 0 | <1 | <1 | <1 | <1 | <1 | 0 | 0 | <1 | 0 | 1 | <1 | 2 | <1 | 2 |
| Three-Year Avg Arrests Per 1,000 Students for Violations of -- | | | | | | | | | | | | | | | |
| Liquor Law | 0 | 0 | 1 | <1 | 0 | <1 | 0 | 0 | 0 | 0 | 14 | <1 | 0 | <1 | 3 |
| Drug Abuse | 0 | <1 | <1 | <1 | 0 | <1 | 0 | 0 | 0 | 0 | 0 | <1 | 0 | <1 | <1 |
| Weapons | 0 | 0 | 0 | 0 | 0 | <1 | 0 | 0 | 0 | 0 | 0 | <1 | 0 | 0 | 0 |

**Statistics are for the three institutions sharing the Auraria Higher Education Center: Community College of Denver, Metropolitan State College of Denver, and University of Colorado-Denver.
 Criminal offenses against a person include murder/non-negligent manslaughter, negligent manslaughter, forcible sex offenses, robbery, and aggravated assault.
 Criminal offenses against property include burglary, motor vehicle theft, and arson.
 Source: Office of Post Secondary Education website, www.ope.ed.gov/security, August 2003

Student Life Activities Available at Colorado Public Four-Year Colleges and Universities

| Student Activities | Institution | Adams SC | Colo Sch of Mines | Colo State U | CSU-Pueblo | Fort Lewis C | Mesa SC | Metro S C of Denver | U Northern Colo | U Colo - Boulder | U Colo - Colo Spr | U Colo - Denver | Western S C |
|--------------------------|-------------|----------|-------------------|--------------|------------|--------------|---------|---------------------|-----------------|------------------|-------------------|-----------------|-------------|
| Choral Groups | | X | X | X | X | X | X | X | X | X | X | X | X |
| Concert band | | X | X | X | X | X | X | X | X | X | X | X | X |
| Dance | | | | X | X | X | X | X | X | X | X | | |
| Drama/Theater | | X | X | X | | X | X | X | X | X | X | X | X |
| Jazz Band | | X | X | X | X | X | X | X | X | X | X | X | X |
| Literary Magazine | | X | X | X | X | X | X | X | X | X | | | X |
| Marching Band | | X | X | X | | | | X | X | | | | |
| Music Ensembles | | X | X | X | X | X | X | X | X | X | X | X | X |
| Musical Theater | | X | | X | | X | | X | X | X | | | |
| Opera | | | | X | | X | | | X | | | | |
| Pep Band | | X | X | X | X | X | | X | X | | | | X |
| Radio Station | | X | | X | X | X | | X | | | | | X |
| Student Government | | X | X | X | X | X | X | X | X | X | X | X | X |
| Student Newspaper | | X | X | X | X | X | X | X | X | X | X | X | X |
| Student-run Film Society | | | | | | X | | X | X | | | | |
| Symphony Orchestra | | | X | X | X | X | | X | | | | | X |
| Television Station | | | | X | X | X | | X | | X | X | | X |
| Yearbook | | | X | X | | | | | | | | | |

For specific team sport/athletic options at each college or university, visit www.coloradomentor.org and go to "Select a Campus." Then click on "Matching Assistant."
Source: Original data from institution's 2002-2003 Common Data Set

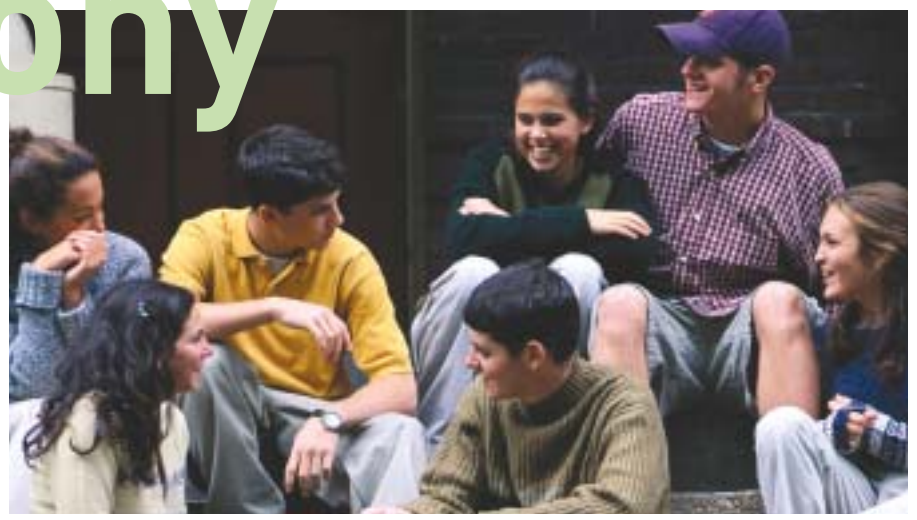
Student Life Activities Available at Colorado Public Two-Year Colleges

| Student Activities | Institution | Aims CC | Arapahoe CC | Colo Mountain C | Colo Northwestern CC | CC of Aurora | CC of Denver | Front Range CC | Lamar CC | Morgan CC | Northeastern JC | Otero JC | Pikes Peak CC | Pueblo CC | Red Rocks CC | Trinidad SJC |
|--------------------------|-------------|---------|-------------|-----------------|----------------------|--------------|--------------|----------------|----------|-----------|-----------------|----------|---------------|-----------|--------------|--------------|
| Choral Groups | | X | X | X | | | X | X | X | | | X | | | X | X |
| Concert Band | | | X | | | | | | | | | | | | | |
| Dance | | | | | X | | | | X | X | | X | | X | | |
| Drama/Theater | | X | X | X | X | X | X | X | X | X | X | X | X | X | X | X |
| Jazz Band | | | | | | | X | | | | | | | | | |
| Literary Magazine | | X | | X | X | | X | | | X | | | | X | X | |
| Marching Band | | | | | | | | | | | | | | | | |
| Music Ensembles | | X | | | | | | | | | | | | | | X |
| Musical Theater | | | | | | | | | | X | | | | X | X | |
| Opera | | | | | | | | | | | | | | | | |
| Pep Band | | | | | | | | | | | | | | | | |
| Radio Station | | X | | | | | | | | | | | | | | |
| Student Government | | X | X | X | X | X | X | X | X | X | X | X | X | X | X | X |
| Student Newspaper | | | X | X | X | X | X | X | X | X | X | X | X | X | X | X |
| Student-run Film Society | | | | | | | | | | | | | | | | |
| Symphony Orchestra | | | | | | | | | | | | | | | | |
| Television Station | | X | | | X | | | | | | | | | X | | X |
| Yearbook | | | | | | | | | | | | | | | | |

For specific team sport/athletic options at each college or university, visit www.coloradomentor.org and go to "Select a Campus." Then click on "Matching Assistant."
Source: Original data from institution's 2002-2003 Common Data Set

jazz
dance
film society

opera
symphony



Special Study Options at Colorado Public Four-Year Colleges and Universities

| Study Options | Institution | Institution | | | | | | | | | | | |
|---|-------------|-------------|-------------------|--------------|------------|--------------|----------|---------------------|-----------------|------------------|-------------------|-----------------|-------------|
| | | Adams S C | Colo Sch of Mines | Colo State U | CSU-Pueblo | Fort Lewis C | Mesa S C | Metro S C of Denver | U Northern Colo | U Colo - Boulder | U Colo - Colo Spr | U Colo - Denver | Western S C |
| Accelerated Program | | X | X | X | X | X | X | X | | X | X | X | |
| Cooperative Education | | | X | X | X | X | X | X | X | X | X | X | X |
| Cross-Registration | | | | | X | | X | | X | X | X | X | |
| Distance Learning | | X | | X | X | X | X | X | X | X | X | X | X |
| Double Major | | X | X | X | X | X | X | X | X | X | X | X | X |
| Dual Enrollment | | | X | X | X | X | X | X | X | X | X | | X |
| English as a Second Language | | | X | X | X | X | X | | X | X | | X | |
| Exchange Student Prog (domestic) | | | X | X | X | X | X | | X | X | X | | X |
| External Degree Program | | | | | X | | | X | X | | | | |
| Honors Program | | X | X | X | X | X | X | X | X | X | | X | X |
| Independent Study | | X | X | X | X | X | X | X | X | X | X | X | X |
| Internships | | X | X | X | X | X | X | X | X | X | X | X | X |
| Liberal Arts/Career Combination | | | | X | | X | | X | | X | X | | X |
| Reserve Officers' Training Corps (ROTC) | | | A, AF | A, AF | A | | | *** | A, AF | A, N, AF | A | *** | |
| Student-Designed Major | | | | | | X | | X | X | X | | X | |
| Study Abroad | | | X | X | X | X | | X | X | X | X | X | X |
| Weekend College | | | | | X | | | X | | X | | | |
| Other Special Options | | (1) | | | | (2) | | | | (3) | | | |

(1)= ACSAchieve-High schooldual enrollment when admitted
 (2)= Area vocational school provides training in technical skills
 (3)= Research and combined BA/MA program, small group academic programs
 ROTC Options: A= Army, N= Navy, AF= Air Force ***Army and Air Force program offered through UCB
 Source: Original data from institution's 2002-2003 Common Data Set

Special Study Options at Colorado Public Two-Year Colleges

| Special Study Options | Institution | Institution | | | | | | | | | | | | | | |
|---|-------------|-------------|-------------|-----------------|----------------------|--------------|----------------|--------------------|----------|-----------|-----------------|----------|---------------|----------------|--------------|----------------|
| | | Aims CC | Arapahoe CC | Colo Mountain C | Colo Northwestern CC | CC of Aurora | CC of Denver | Front Range CC | Lamar CC | Morgan CC | Northeastern JC | Otero JC | Pikes Peak CC | Pueblo CC | Red Rocks CC | Trinidad SJC |
| Accelerated Program | | | X | | | X | | | | | | | | | | |
| Cooperative Education | | X | X | X | | X | X | X | | | | X | | | X | X |
| Cross-Registration | | | | | | | X | X | | | | | | X | X | |
| Distance Learning | | X | X | X | X | X | X | X | X | X | X | | | X | X | X |
| Double Major | | X | X | X | X | X | X | X | | X | | | X | X | X | X |
| Dual Enrollment | | X | X | X | X | X | X | X | X | | X | | | X | X | X |
| English as a Second Language | | X | X | X | | X | | | X | X | | | X | X | X | X |
| Exchange Student Prog (domestic) | | | | | | | | | | | | | | | | |
| External Degree Program | | | | | | | | | | | | | X | | | X |
| Honors Program | | | X | | | X | | | | | | X | | | X | |
| Independent Study | | X | X | X | X | X | X | X | X | X | X | | X | X | X | X |
| Internships | | X | X | X | X | X | X | X | X | X | X | | X | X | X | X |
| Liberal Arts/Career Combination | | X | | | X | | | | | | | X | | | | |
| Reserve Officers' Training Corps (ROTC) | | | | | | | A ¹ | A, AF ² | | | | X | X | A ³ | | A ⁴ |
| Student-Designed Major | | | | | | | | | | | | | | | | |
| Study Abroad | | X | | | X | | X | X | | | | X | | | | X |
| Weekend College | | | X | | | X | X | X | X | | | | X | X | | X |

ROTC Options: A= Army, N= Navy, AF= Air Force
 A: Army program offered through Metropolitan State College of Denver
 AF²: Army and Air Force program offered through University of Colorado- Denver
 A³: Army program offered through University of Colorado at Colorado Springs
 A⁴: Army program offered through the Colorado School of Mines
 Source: Original data from institution's 2002-2003 Common Data Set

study abroad

internships

honors program



Online Learning

You Have Many Options to Learn Online

If one of the following statements sounds like it applies to you and your needs, the online learning option may be a step in the right direction.

- “I’m an on-campus student and have scheduling conflicts.”
- “I need to take extra courses to complete my program on time.”
- “I’m in the workforce or at home, and my schedule or location keeps me from attending class in person.”
- “I live in a rural area and have to travel too far to attend class on campus.”

To participate in an online class you’ll need a computer and Internet access. You’ll also need typical computer software applications like a web browser and MS Word. When taking online courses, your interaction with the teacher and classmates is usually through the Internet. Classes include the same academic standards, syllabus, materials, and assessment as those taken on campus. Tuition varies between schools and is often dependent on whether the class is offered as part of the school’s main academic program or as continuing education.



For more specific information on online learning opportunities in Colorado visit the various websites listed here:

Four-Year Colleges and Universities

| | |
|---|--|
| ASC | www.exstudies.adams.edu/ext_study_online.htm |
| CSM | www.mines.edu/outreach/cont_ed/online.html |
| CSU | www.learn.colostate.edu/ |
| CU System | www.cusys.edu/explore/online.html |
| METRO | www.msced.edu/~options/ |
| UCB Con’t Ed | www.colorado.edu/conted/ |
| UCCS | www.uccs.edu/~7Eonline/ |
| UCD | www.cuonline.edu |
| UCHSC | www.uchsc.edu |
| UNC | www.unco.edu |
| FLC | www.fortlewis.edu/ |
| WSC | www.western.edu/reg/Welcome.html |
| Colorado Consortium for Independent Study | www.colorado.edu/ccis |

Two-Year Colleges

| | |
|------------|---|
| CCCOOnline | www.cconline.org |
| AIMS | www.aims.edu/distance.htm |
| ACC | http://arapahoe.edu.equat.net/custom/DistanceLearning.html |
| CCA | www.ccaurora.edu/infosheets/index.htm |
| CCD | www.ccd.rightchoice.org/OnlineLearning/index.html |
| CMC | www.coloradomtn.edu/distlearn/home.html |
| CNCC | www.cncc.edu/distance_education/ |
| FRCC | www.frontrange.edu/ |
| LLC | www.lamarcc.edu |
| MCC | www.morgancc.edu/ |
| NJC | www.njc.edu |
| OJC | www.ojc.edu |
| PCC | www.pueblocc.edu//online.htm |
| PPCC | www.ppcc.edu/Academics/DistanceEducation/ |
| RRCC | www.rrcc.edu/online/ |
| TSJC | www.trinidadstate.edu/distance/onlinelearning.htm |

Can You Put Your Degree To Work?

Many jobs will be available to you with a high school diploma and/or limited on-the-job training. Numerous studies show, however, that completing an undergraduate degree has a significant positive effect on earnings over the course of your working life. The National Center for Education Statistics reported in 2000:

- “Students who drop out of high school earn approximately 26% percent less than those who received a high school diploma.
- “Male college graduates earn 64% percent more than those who completed high school.
- “Female college graduates earned 62% percent more than those who completed high school.

High Growth Occupations in Colorado, 1998-2008

| Employment Title | Growth Rate | Average Annual Openings | Average Annual Entry-Level Wage, 2000 - 2001 | Average Annual Wage, 2000 - 2001 |
|--|-------------|-------------------------|--|----------------------------------|
| Baccalaureate Degree: | | | | |
| Systems Analysts | 10.80% | 1,069 | \$43,950 | \$64,960 |
| Computer Engineers | 9.40% | 853 | \$42,980 | \$72,740 |
| Computer Programmers | 3.60% | 737 | \$46,020 | \$65,290 |
| Teachers, Secondary School | 3.10% | 614 | \$27,540 | \$41,490 |
| Accountants & Auditors | 1.90% | 469 | \$33,290 | \$49,210 |
| Teachers, Elementary School | 1.90% | 443 | \$26,850 | \$36,780 |
| Electrical & Electronics Engineers | 3.50% | 340 | \$45,930 | \$64,410 |
| Construction Managers | 5.60% | 306 | \$42,310 | \$61,490 |
| Loan Counselors & Officers | 5.20% | 297 | \$29,210 | \$32,690 |
| Securities, Commodities, & Financial Svcs Sales Agents | 4.60% | 289 | \$28,630 | \$65,490 |
| Database Administrators | 11.50% | 218 | \$34,710 | \$56,480 |
| Writers & Editors | 4.10% | 199 | \$27,100 | \$42,790 |
| Designers, Exterior/ Interior | 4.70% | 195 | \$37,680 | \$55,280 |
| Property/Real Est/Comm Assoc Mgrs | 3.00% | 187 | \$22,190 | \$45,170 |
| Civil Engineers | 3.20% | 186 | \$39,410 | \$56,760 |
| Teachers, Special Education, Secondary | 4.40% | 175 | \$29,770 | \$43,210 |
| Associate's Degree: | | | | |
| Computer Support Specialists | 13.40% | 1,323 | \$25,170 | \$40,660 |
| Registered Nurses | 2.50% | 709 | \$35,510 | \$45,550 |
| Paralegals & Legal Assistants | 4.90% | 139 | \$28,210 | \$37,520 |
| Post-secondary Vocational Training: | | | | |
| Automotive Mechanics/Service Technicians | 3.30% | 413 | \$22,720 | \$34,180 |
| Hairdressers/Hairstylists/Cosmotologists | 1.80% | 272 | \$14,990 | \$20,810 |
| Long-term, On-the-job Training: | | | | |
| Carpenters | 5.00% | 723 | \$25,310 | \$34,250 |
| Cooks, Restaurant | 3.30% | 580 | \$14,410 | \$18,800 |
| Electricians | 4.10% | 455 | \$27,660 | \$42,480 |
| Maintenance Repairers, General Util | 2.00% | 452 | \$18,710 | \$28,410 |
| Plumbers/Pipefitters/Steamfitters | 3.50% | 256 | \$24,510 | \$37,970 |
| Correctional Officers | 5.80% | 158 | \$34,030 | \$46,070 |
| Moderate-term, On-the-job Training: | | | | |
| Sales Reps, Mfg and Wholesale | 2.20% | 743 | \$25,310 | \$46,540 |
| Secretaries, Executive Legal or Medical | .90% | 513 | \$25,340 | \$34,050 |
| Medical Assistants | 5.30% | 231 | \$19,100 | \$34,370 |
| Dental Assistants | 5.00% | 165 | \$20,900 | \$29,680 |
| Short-term, On-the-job Training: | | | | |
| Retail Salespersons | 2.40% | 2,680 | \$14,140 | \$22,260 |
| Office Clerks, General | 2.60% | 1,797 | \$16,650 | \$23,690 |
| Waiters & Waitresses | 2.90% | 1,749 | \$12,370 | \$17,580 |
| Truck Drivers, Heavy | 4.10% | 775 | \$23,820 | \$32,400 |
| Laborers, Landscaping/Groundskeeping | 4.90% | 762 | \$15,420 | \$20,880 |
| Child Care Workers | 3.70% | 373 | \$12,480 | \$16,140 |
| Nursing Aides/Orderlies/Attends | 3.20% | 301 | \$16,110 | \$20,210 |
| Teacher Aides/Educational Assts | 3.60% | 159 | \$14,640 | \$19,350 |

Notes

Notes
